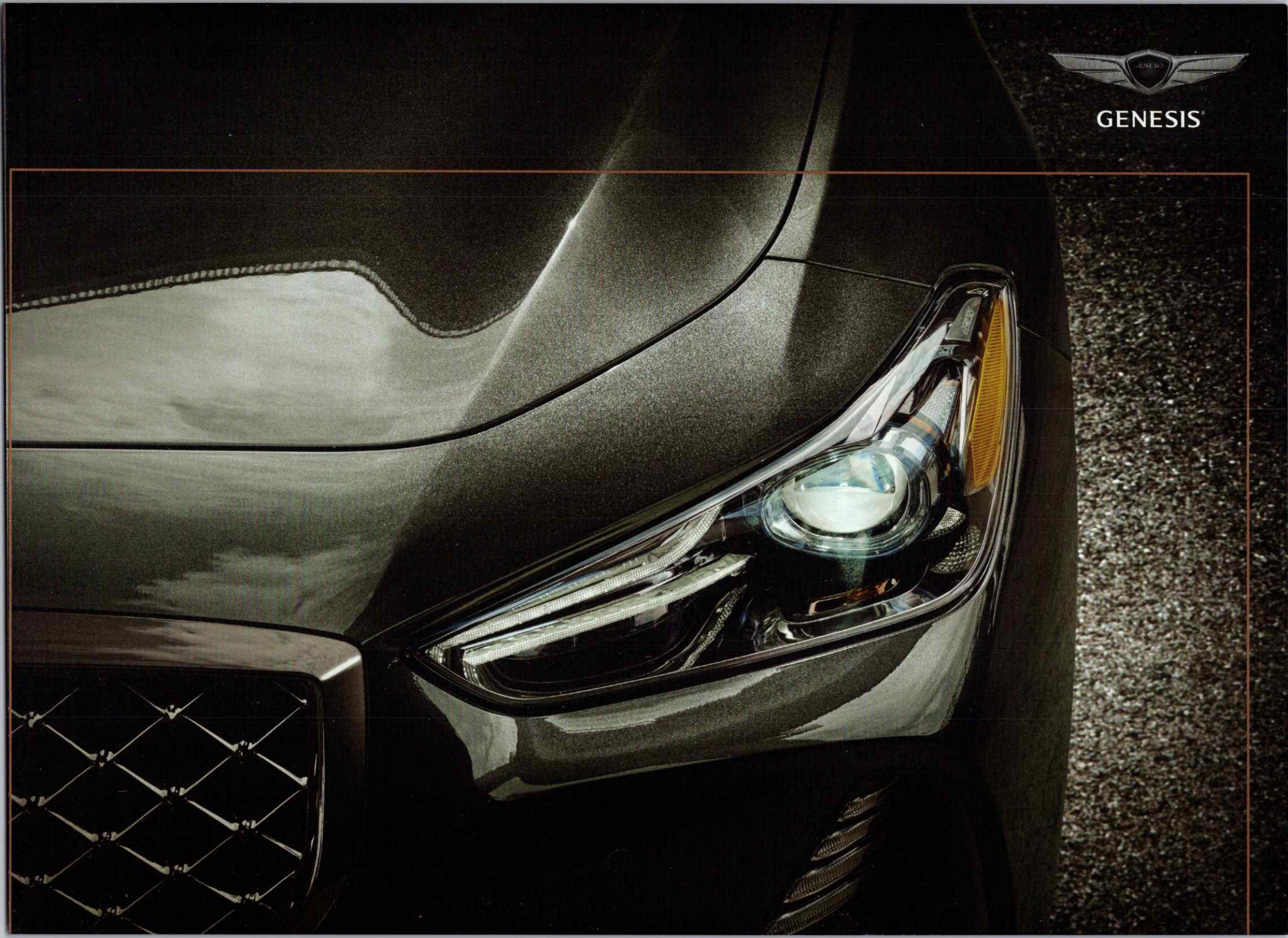




GENESIS





# HUMAN- CENTRED LUXURY.

Genesis harnesses the power of human-centred luxury to move beyond convention. It transforms the very concept of thinking ahead and moving forward.

The Genesis experience is like no other. We want to make a positive difference in our customers' lives by exploring new avenues and seeking a better way forward.

From the design of our finely crafted products to an unparalleled suite of service offerings, each element of the Genesis ownership experience is highly personalized with the customer in mind.













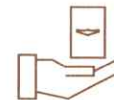
# GENESIS AT HOME

Acquaint yourself with Genesis: an entirely new automotive brand that recognizes your time and convenience as being the ultimate luxuries, to bring you an experience that begins at your front door.

We call this Genesis at Home. A personalized journey that starts at your home or office, where a Genesis Experience Manager will meet you with the model of your choice, for a demonstration and test drive.

Then, through **genesis.ca** you can configure your model online, get an appraisal for a trade-in, complete a credit application and then purchase your new Genesis vehicle for delivery at a location of your choice.

Finally, once you become a Genesis owner, our valet service will pick up your vehicle for its scheduled maintenance needs and leave behind a Genesis courtesy vehicle, ensuring that you never miss a step in your busy day.



To deliver a world-class driving experience, standard equipment for all Genesis models includes the latest safety and entertainment technologies, all-wheel drive and a warranty coverage of 5 years or 100,000 km, inclusive of scheduled maintenance and concierge pickup service.<sup>1</sup>



# GENESIS G70

There's no telling what the all-new Genesis G70 might one day be to you. Maybe it will be your 365-horsepower<sup>2</sup> escape pod, one that holds you as firmly as it holds the road. Perhaps it will become your classically proportioned personal calling card, with a swept-back roofline and eager, wide and low stance. It could be your luxury command centre, putting cutting-edge technology and leather-wrapped comfort at your fingertips. Or it may simply be all of the above, as you might expect from a compact luxury sport sedan designed to make the most of every drive.



Download the augmented reality (AR) smartphone application. Scan images on pages that feature this icon to get more detailed information and images of G70 in AR.





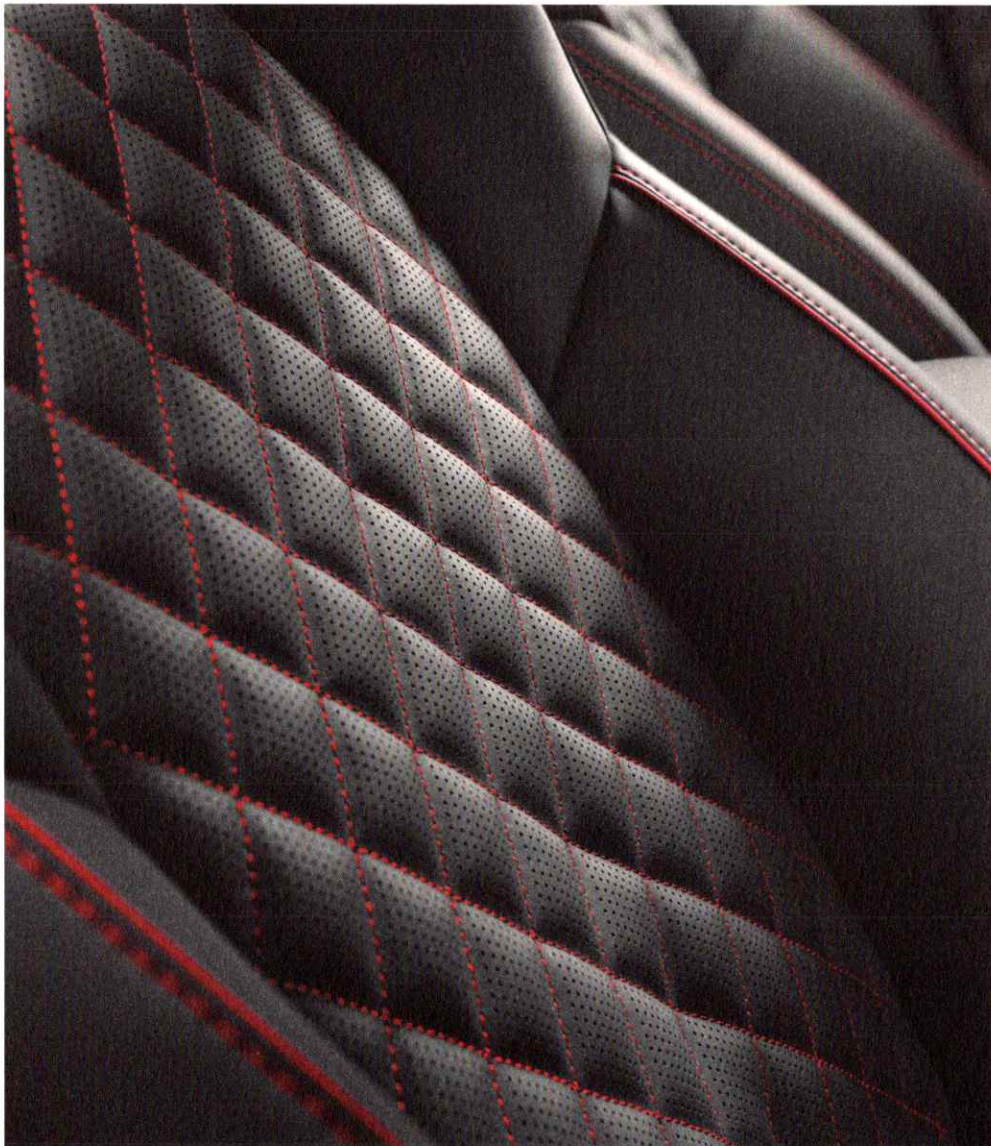




CLASSICS OFTEN TAKE TIME TO BE APPRECIATED.  
PERHAPS 4.7 SECONDS WILL SUFFICE?







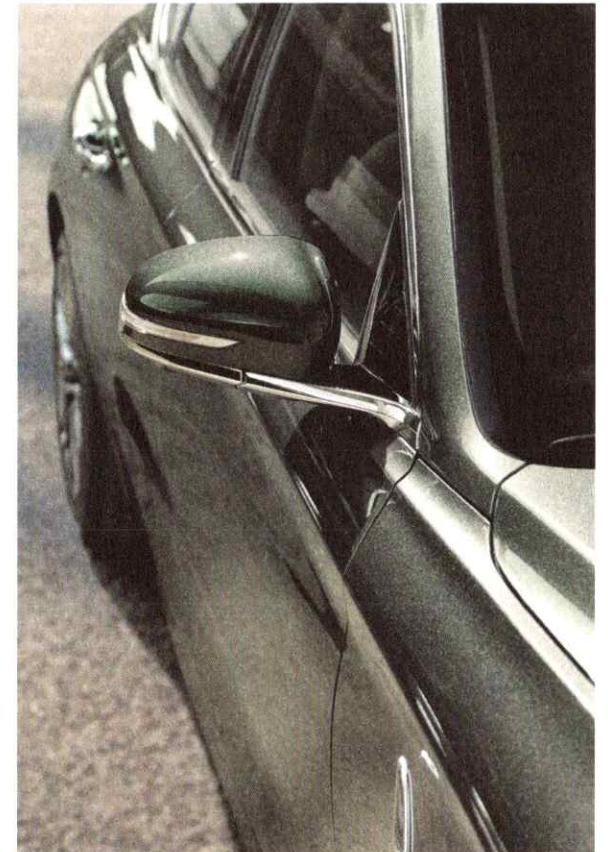
Refined performance is the mantra of the G70. Not that you'd know it from the growl of its available 3.3L twin-turbocharged V6 and its sub-five second 0 to 100. Striking the right balance, however, has its rewards. On one side of the equation are 365 horsepower<sup>2</sup> and 376 lb-ft of torque<sup>2</sup> for rapid acceleration. On the other side are a rigid Nürburgring-tuned chassis and a Brembo<sup>®</sup> braking system for keen responsiveness. Underlying everything are standard all-wheel drive and an available limited-slip differential that provide confidence-inspiring traction in all weather conditions. Plus, another sort of refinement—a Genesis interior thoughtfully wrapping you in fine quilted leather and brushed aluminum.



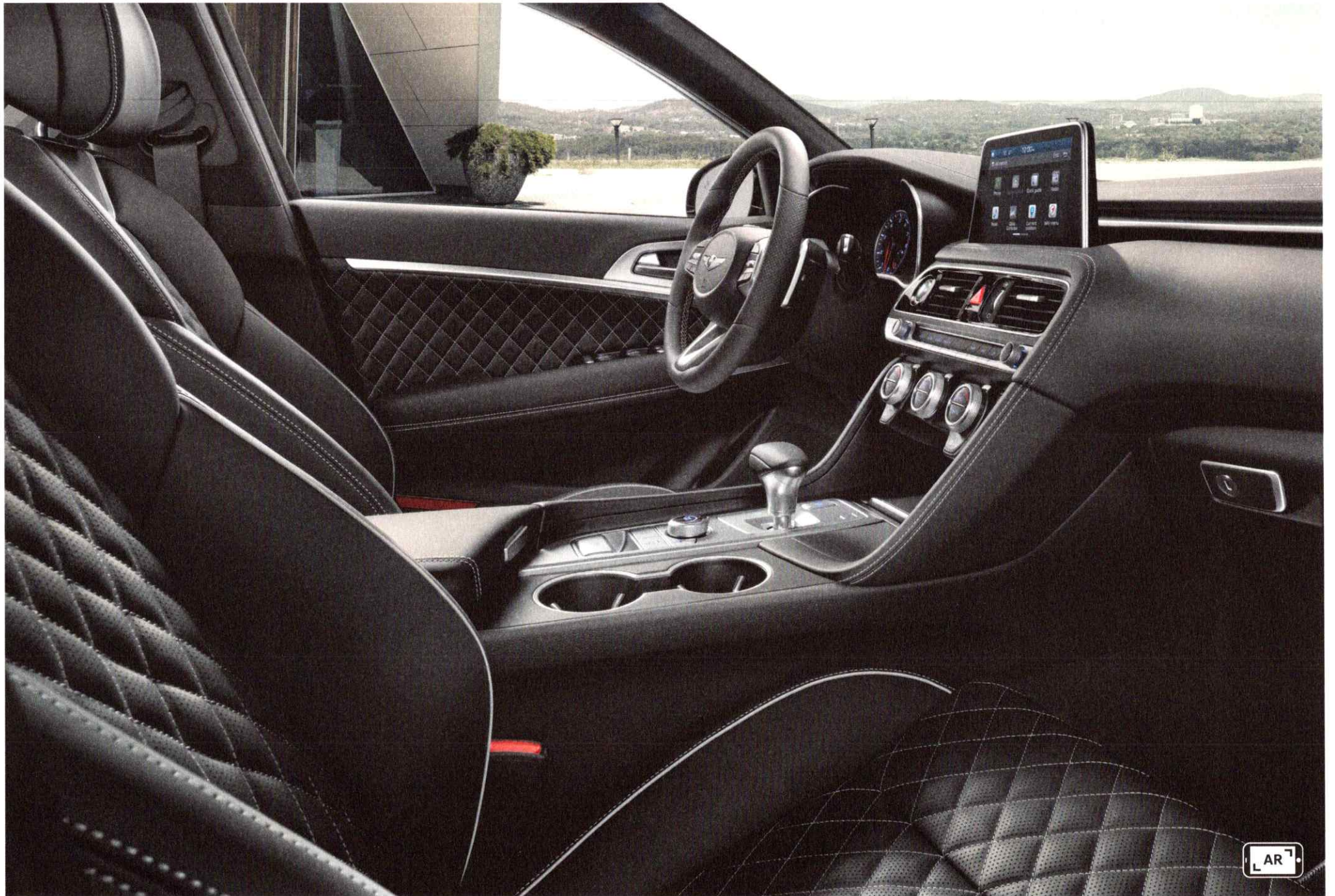
# URNS OUT, THE LAP OF LUXURY IS TURBOCHARGED.

For a vehicle that doesn't pull punches in the corners, the G70 sure knows how to treat you with kid gloves. When you nestle into the quilted-leather seat and grab the wheel you feel instantly at home. Elegant contrast-stitching and brushed aluminum accents highlight the cabin's fluid design lines. The way the centre console wraps around you makes climate and audio adjustments effortless.

And the high-mounted touchscreen ensures that with a flick of the eye and a touch of a finger you can optimize the cabin to your needs. Which comes in handy since you have quite the drive to enjoy, after all.



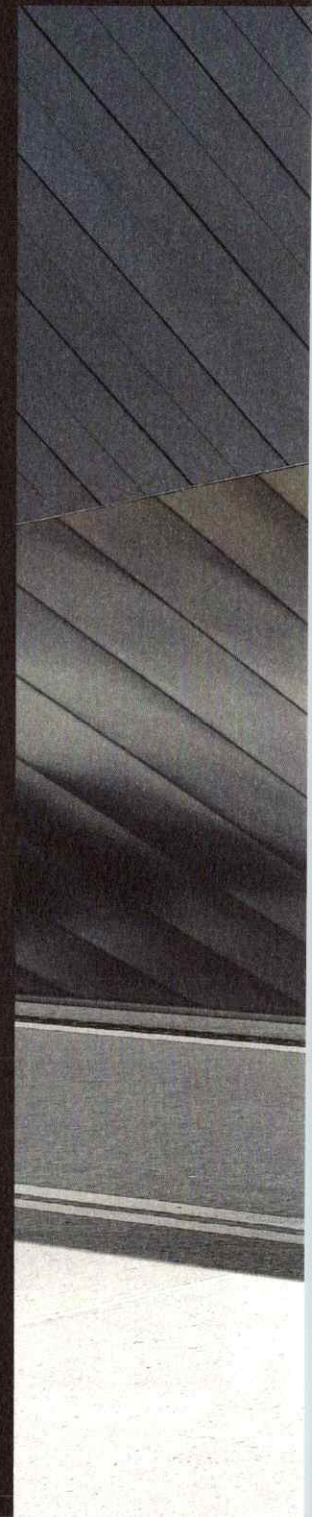






# GENESIS G80

The 2018 G80 may just be the luxury vehicle that understands you best. Its innovative design is unreservedly devoted to driver satisfaction. A distinctive grille and sleek body lines create an elegantly inviting silhouette. Your choice of 3 engines supplies the freedom and exhilaration for your journey. And a driver-focused cockpit built around a 16-way power-adjustable seat ensures you feel comfortable, pampered and in command. If you're drawn to the call of the open road, the G80 most definitely speaks your language.









## IT'S SIMPLY NOT PRACTICAL TO BE TOO PRACTICAL.

The G80 is proof positive of the joys in going beyond merely getting from A to B. A good corner or two will have you singing the praises of its multi-link independent suspension with available continuous damping control—though perhaps not in so many words. Nevertheless, from the standard panoramic roof to the rich combination of wood, aluminum, and leather finishes, the G80 is a luxurious homage to the beauty of the drive.

And with its standard Lexicon® audio system (configured with 14 or 17 speakers) the G80 sounds beautiful, too. In the end, you may find that venturing past the practical has never seemed so sensible.









## THE SHORTEST DISTANCE BETWEEN TWO POINTS IS MERELY A SUGGESTION.

You wouldn't be the first driver behind the wheel of a G80 Sport to ignore a short cut. It's to be expected. A 365-horsepower twin-turbocharged 3.3L V6 with put-you-in-your-seat mid-range torque can prove to be quite captivating. With its wide air intakes and dark chrome grille, the G80 Sport is as unmistakable as it is seductive. Underneath its sharp exterior is a barrage of performance enhancements, including sport-tuned suspension and larger rear brake rotors. A rear-biased all-wheel drive system helpfully provides poise and confidence no matter the environment. Inside, Nappa leather seats with larger side bolsters keep you in place, and a smaller-diameter sport steering wheel with ergonomically placed shift paddles keeps you in control. Time itself, however, may prove difficult to keep your grip on.



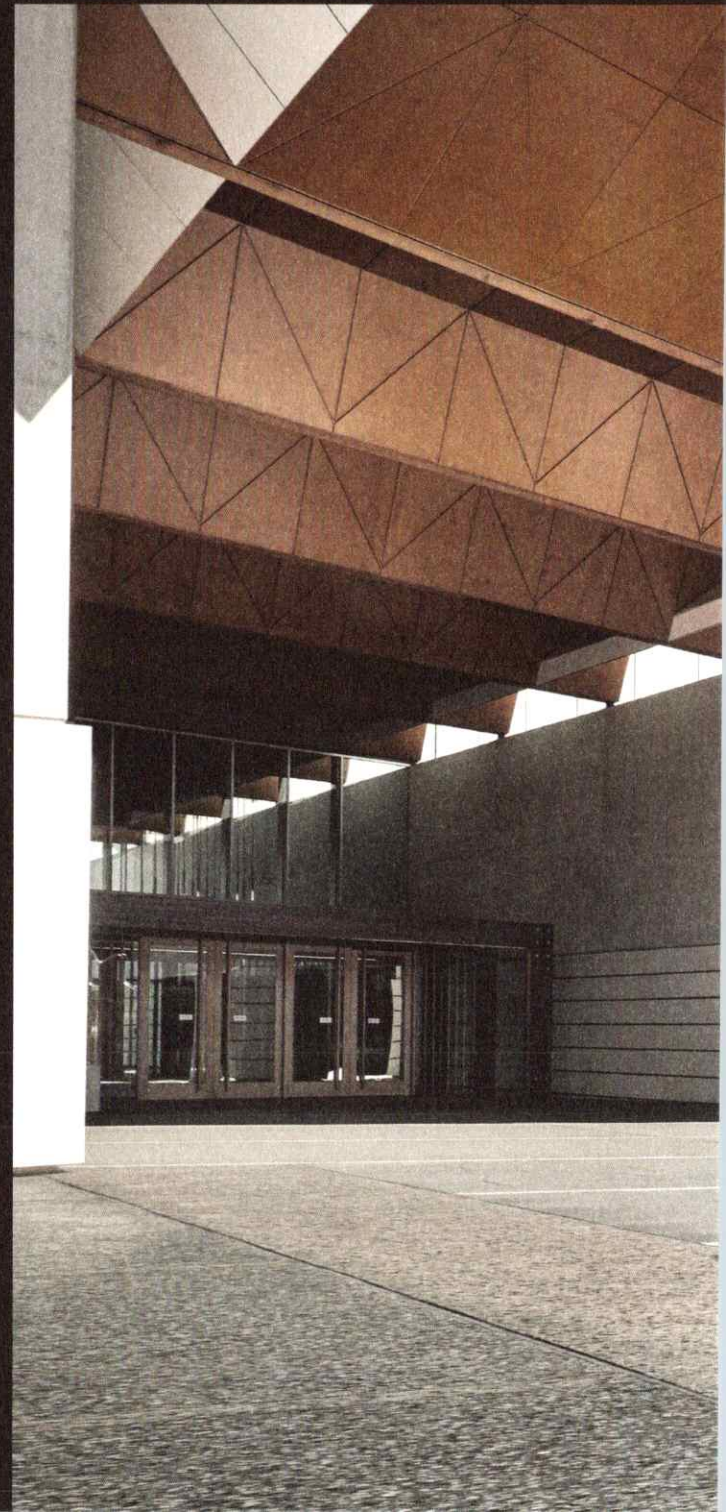






# GENESIS G90

True luxury is about the way you feel when you encounter it. With the G90, that feeling begins in the wind tunnels that helped shape its silhouette. The precise aerodynamics that provide its characteristic streamlined physique also contribute to its strikingly quiet interior. That added attention to noise reduction can prove to be of outsized importance when a 420 horsepower V8 or a twin-turbocharged V6 are powering your G90 down the highway. Such attention to detail ultimately leads to luxuriously intuitive design. From standard power-operated rear window shades to available memory-programmable rear seats, the G90 simply takes care of everything. And, as with most great performances, the G90 makes it seem effortless.









## IS IT POSSIBLE THAT CLOUD NINE SEATS FIVE?

Is it any wonder that time flies when you're in a G90? The 22-way power-adjustable driver's seat was benchmarked against designer armchairs and luxury airline seating. Its spacious cabin of natural wood and Nappa leather features double soundproof glass and triple-sealed doors. Don't worry—you may not hear the road, but you'll still be able to respond to it. The Genesis Adaptive Control Suspension adjusts damping response in real time based on road conditions or driver input, striking the ideal balance between comfort and performance. In the end, reasons to exit your G90 may prove hard to find. Though having a closer look at the 19" staggered-width wheels does come to mind.





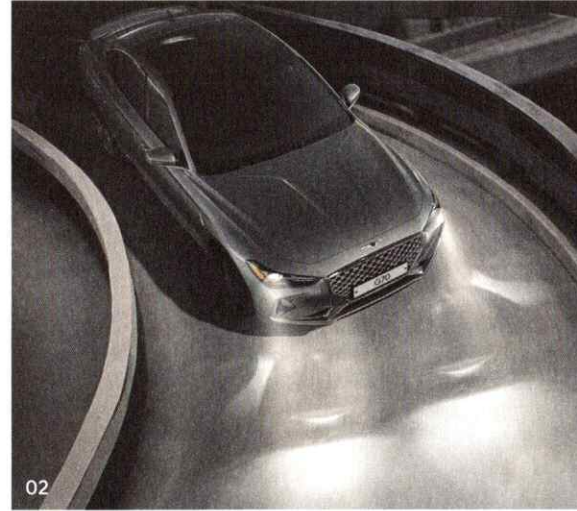




# GENESIS SMART SENSE



For Genesis, state-of-the-art safety isn't a choice. That's why all Genesis models feature **Genesis Smart Sense™**, a comprehensive suite of active driver assistance features. Not only do these features cover the full spectrum of safety—helping to keep the driver alert and aware of their surroundings while monitoring the road ahead for potentially unseen hazards—but all of them also come standard.



01

## HIGH BEAM ASSIST

Using the front-mounted camera and light detection technology, High Beam Assist automatically switches between high beams and low beams when traffic is detected ahead.



02

## LED HEADLIGHTS WITH ADAPTIVE CORNERING SYSTEM

The available LED headlights with Adaptive Cornering System can swivel based on steering input, shining into the darkness around the next bend.

03

## FORWARD COLLISION AVOIDANCE-ASSIST

Forward Collision Avoidance-Assist<sup>3</sup> uses a forward camera and radar sensors to detect rapidly closing distance between your vehicle and the vehicle ahead. If a potential forward collision is detected, warning notifications alert the driver. The system can provide full braking assistance to help avoid an imminent collision at speeds between 8 and 75 kilometres per hour for vehicles or 8 and 65 kilometres per hour for pedestrians.





04

**BLIND-SPOT COLLISION WARNING**

The Blind-Spot Collision Warning<sup>4</sup> system heightens awareness by alerting the driver when there is a vehicle in their blind spot, or rapidly approaching, as they attempt to change lanes. In models equipped with the optional Head-Up Display, warnings are even projected onto the windshield for unparalleled situational awareness.



05

**LANE KEEP ASSIST**

Drift outside your lane without signaling and the Lane Keep Assist<sup>5</sup> system first warns you with haptic vibrations through the steering wheel, as well as audible and visual cues. If the vehicle continues to approach the edge of its current lane, Lane Keep Assist can provide steering assistance to bring the vehicle back on course.



06

**ADAPTIVE CRUISE CONTROL**

Adaptive Cruise Control<sup>6</sup> with stop-and-go capability carefully adjusts your preset speed and distance from the vehicle ahead. It will even come to a full stop and then start again, without driver input, when the vehicle has been stopped for less than three seconds.

Genesis G80 and Genesis G90 have been awarded the Insurance Institute for Highway Safety's Top Safety Pick+ award for 2018.<sup>7</sup> Please visit [www.iihs.org](http://www.iihs.org) for information on scoring.





# DRIVING DYNAMICS



01

## ALL-WHEEL DRIVE

To ensure they can tackle Canada's toughest driving conditions, Genesis models feature a highly advanced all-wheel drive system as standard equipment. This rear-biased system was rigorously tested in the world's most demanding driving environments, including Germany's famed Nürburgring Nordschleife racing circuit. With superior control and stability in all weather conditions, the Genesis all-wheel drive system can adjust front-to-rear torque distribution based in real-time and the drive mode selected.



02

02

## DRIVE MODE SELECT

Genesis vehicles offer a range of driver-selectable modes to tailor control and comfort based on your driving environment. Throttle response, steering weight, AWD torque distribution, and even the *Genesis Adaptive Control Suspension* (if equipped) can be adjusted to your preference. G70 and G90 models also include a custom mode allowing the driver to mix-and-match their favourite settings.



03



04

04

## INFORMATION AT-A-GLANCE

All Genesis vehicles feature clear, easy-to-read instruments incorporating a multi-function TFT LCD display. A wide range of information, from speed to trip information to system status, can be accessed by the driver at a glance. The same meticulous approach to ergonomics can be found throughout the interior of each Genesis model, where our designers have worked tirelessly to hone every interface between driver and machine.

03

## TOOLS OF THE TRADE

Genesis models come equipped with a range of standard and available performance features designed to enhance driver confidence. G80 and G90 feature powerful 4-piston fixed front brake calipers, with G70 Sport models incorporating a high-performance Brembo® braking system that also adds 2-piston fixed rear calipers. An available *Genesis Adaptive Control Suspension* can alter damping response based on road conditions or driver inputs. Meanwhile, Continental® and Michelin® tires ensure an optimal balance of quiet operation and confident grip.





05

**CONCERT-QUALITY AUDIO**

The luxurious cabin of Genesis models can be complemented by an impressive available Lexicon® surround sound audio system adorned with metal laser-cut grilles. The system boasts Quantum Logic® surround sound and Clari-Fi™ music restoration software that rebuilds details lost in compressed audio files. The result is a dynamically rich and fully satisfying listening experience that recreates the ambience of a recorded performance space.



06

**MULTIPLE PERSPECTIVES**

Get an expanded view of what's around you with the advanced Multi-View Camera System. See your car in multiple perspectives, including an aerial view of the vehicle, for a comprehensive look at the surrounding environment.

07

**HEADS-UP**

An available Head-Up Display helps reduce distraction by displaying critical driving information on the windshield, directly below the driver's line of sight. Information includes speed, navigation directions and Adaptive Cruise Control settings, as well as indicators from Blind-Spot Collision Warning, Lane Keep Assist, and Forward Collision Avoidance-Assist.



08

**SEAMLESS CONNECTIVITY**

Genesis models come equipped with a range of high-resolution central displays bringing together a long list of impressive information- and entertainment-based features. G70 and G80 models feature Apple CarPlay™ and Android Auto™, allowing seamless integration of useful smartphone functions.



# GENESIS G70 COLOURS & TRIMS

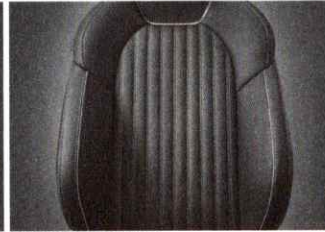
## INTERIOR



OBSIDIAN BLACK SEATS WITH ONE-TONE BLACK DASHBOARD



SYNTHETIC LEATHER



GENUINE LEATHER



QUILTED NAPPA LEATHER



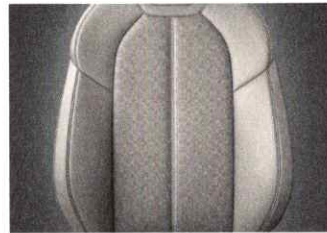
BLACK HIGH GLOSS



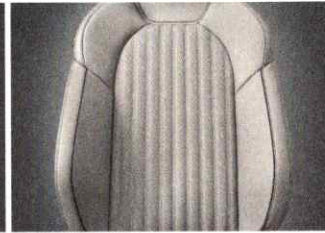
BRUSHED ALUMINUM



STORM GREY SEATS WITH TWO-TONE BLACK + GREY DASHBOARD



SYNTHETIC LEATHER



GENUINE LEATHER



QUILTED NAPPA LEATHER



BLACK HIGH GLOSS



BRUSHED ALUMINUM



CARAMEL BROWN LEATHER WITH ONE-TONE BLACK DASHBOARD



GENUINE LEATHER



QUILTED NAPPA LEATHER



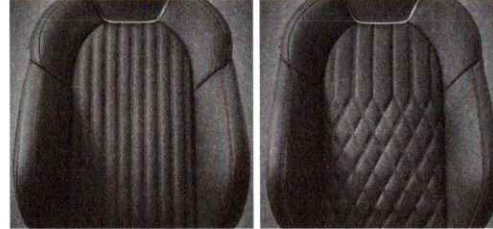
BRUSHED ALUMINUM



## INTERIOR



BLACK LEATHER SEATS (CONTRAST BURGUNDY PIPING) WITH TWO-TONE BURGUNDY + BLACK DASHBOARD



GENUINE LEATHER

QUILTED NAPPA LEATHER



BRUSHED ALUMINUM



VANILLA BEIGE SEATS WITH TWO-TONE FOREST GREEN + BEIGE DASHBOARD



QUILTED NAPPA LEATHER



BRUSHED ALUMINUM



SPORT BLACK SEATS WITH RED OR GREY CONTRAST PIPING/STITCHING



SPORT QUILTED NAPPA LEATHER

SPORT QUILTED NAPPA LEATHER



BRUSHED ALUMINUM

## EXTERIOR



VICTORIA BLACK



SERENGETI BROWN



HIMALAYAN GREY



SANTIAGO SILVER



CASABLANCA WHITE



ADRIATIC BLUE



MALLORCA BLUE



NÜRBURG GREEN



SIBERIAN ICE<sup>10</sup>



HAVANA RED

<sup>10</sup>Only available on Genesis G70 Sport models.

Please note that interior colour restrictions exist, based both on pairing to exterior colour as well as vehicle trim level. For full details, please visit [www.genesis.ca](http://www.genesis.ca).

The colours shown may vary from actual vehicle colours due to limitations of the printing process. 2019 Genesis G70 colours and trims shown.



# GENESIS G70 SPECIFICATIONS

	G70 2.0T	G70 Sport 2.0T	G70 3.3T
<b>ENGINE</b>			
Type	Turbocharged 2.0L DOHC 16-valve I4 with Dual Continuously Variable Valve Timing (D-CVVT)	Turbocharged 2.0L DOHC 16-valve I4 with Dual Continuously Variable Valve Timing (D-CVVT)	Twin-turbocharged 3.3L DOHC 24-valve V6 with Dual Continuously Variable Valve Timing (D-CVVT)
Displacement	1,998 cc	1,998 cc	3,342 cc
Materials	Aluminum block and head	Aluminum block and head	Aluminum block and head
Horsepower (estimated)	252 @ 6,200 rpm (Premium fuel)	252 @ 6,200 rpm (Premium fuel)	365 @ 6,000 rpm (Premium fuel)
Torque (estimated)	260 lb-ft @ 1,400-4,000 rpm (Premium fuel)	260 lb-ft @ 1,400-4,000 rpm (Premium fuel)	376 lb-ft @ 1,300-4,500 rpm (Premium fuel)
Turbocharger type	Single twin-scroll	Single twin-scroll	Parallel twin single-scroll
Bore and stroke	86.0 mm x 86.0 mm	86.0 mm x 86.0 mm	92.0 mm x 83.8 mm
Compression ratio	10.0:1	10.0:1	10.0:1
Fuel system	Gasoline Direct Injection (GDI)	Gasoline Direct Injection (GDI)	Gasoline Direct Injection (GDI)
Recommended fuel	Premium / Unleaded	Premium / Unleaded	Premium / Unleaded
<b>TRANSMISSION AND DRIVE SYSTEM</b>			
Drive configuration	Full-time All-Wheel Drive (AWD) with integrated transfer case actuator and variable torque split clutch	Rear-wheel drive	Full-time HTRAC All-Wheel Drive (AWD) with integrated transfer case actuator and variable torque split clutch
Rear Axle Limited Slip Differential (LSD)	Not available	Standard equipment	<b>3.3T Dynamic</b> Not available <b>3.3T Sport</b> Standard equipment
Transmission type	8-speed electronic automatic with overdrive lock-up torque converter and manual mode with wheel-mounted shift paddles	6-speed manual gearbox	8-speed electronic automatic with overdrive lock-up torque converter and manual mode with wheel-mounted shift paddles
Gear ratio (:1)			
1st	3.964	3.848	3.665
2nd	2.468	2.317	2.396
3rd	1.610	1.623	1.610
4th	1.176	1.233	1.190
5th	1.000	1.000	1.000
6th	0.832	0.794	0.826
7th	0.652	-	0.643
8th	0.565	-	0.556
Reverse	2.273	3.985	2.273
Final gear ratio	3.727	3.538	3.538
<b>ELECTRICAL</b>			
Ignition system	Electronic/Distributorless (Controlled by ECU)	Electronic/Distributorless (Controlled by ECU)	Electronic/Distributorless (Controlled by ECU)
Starter	12V - 1.4kW	12V - 1.2kW	12V - 1.7kW
Alternator	13.5V - 150A	13.5V - 150A	13.5V - 180A
<b>BRAKING</b>			
Front	320 mm x 28 mm ventilated rotors, 1-piston calipers	350 mm x 30 mm ventilated rotors, 4-piston fixed Brembo® calipers	350 mm x 30 mm ventilated rotors, 4-piston fixed Brembo® calipers
Rear	314 mm x 13 mm solid rotors, 1-piston calipers	340 mm x 22 mm ventilated rotors, 2-piston fixed Brembo® calipers	340 mm x 22 mm ventilated rotors, 2-piston fixed Brembo® calipers
<b>STEERING</b>			
Type	Rack-and-pinion	Rack-and-pinion	Rack-and-pinion with Variable Gear Ratio (VGR)
Assistance	Rack-mounted Motor Driven Power Steering (R-MDPS)	Rack-mounted Motor Driven Power Steering (R-MDPS)	Rack-mounted Motor Driven Power Steering (R-MDPS)
Overall ratio	12.5:1	12.5:1	12.5:1
Turns (lock-to-lock)	2.3	2.4	2.3
Turning circle (curb-to-curb)	11.4 m	11.0 m	11.4 m



	G70 2.0T	G70 Sport 2.0T	G70 3.3T
<b>SUSPENSION</b>			
Front	MacPherson strut with coil springs and gas-charged dampers	MacPherson strut with coil springs and gas-charged dampers	MacPherson strut with coil springs and gas-charged dampers
Rear	5-link independent with coil springs and gas-charged dampers	5-link independent with coil springs and gas-charged dampers	5-link independent with coil springs and gas-charged dampers
Genesis Adaptive Control Suspension	Not available	Not available	<b>3.3T Dynamic</b> Not available <b>3.3T Sport</b> Standard equipment
<b>WHEELS AND TIRES</b>			
Wheels	18" x 8.0J aluminum alloy	19" x 8.0J aluminum alloy (front) 19" x 8.5J aluminum alloy (rear)	<b>3.3T Dynamic</b> 18" x 8.0J aluminum alloy <b>3.3T Sport</b> 19" x 8.0J aluminum alloy (front) 19" x 8.5J aluminum alloy (rear)
Tire size	P225/45R18 all-season	P225/40R19 high-performance summer (front) P255/35R19 high-performance summer (rear)	<b>3.3T Dynamic</b> P225/45R18 all-season <b>3.3T Sport</b> P225/40R19 high-performance summer (front) P255/35R19 high-performance summer (rear)
Tire model	Michelin Primacy MXM4	Michelin Pilot Sport 4	<b>3.3T Dynamic</b> Michelin Primacy MXM4 <b>3.3T Sport</b> Michelin Pilot Sport 4
<b>BODY/CHASSIS</b>			
Type	Unibody	Unibody	Unibody
Primary materials	Advanced High Strength Steel (AHSS)	Advanced High Strength Steel (AHSS)	Advanced High Strength Steel (AHSS)
Coefficient of drag (Cd)	0.28	0.28	0.28
<b>EXTERIOR DIMENSIONS</b>			
Wheelbase	2,835 mm	2,835 mm	2,835 mm
Overall length	4,685 mm	4,685 mm	4,685 mm
Overall width	1,850 mm	1,850 mm	1,850 mm
Overall height	1,400 mm	1,400 mm	1,400 mm
Overhang	805 mm (front), 1,045 mm (rear)	805 mm (front), 1,045 mm (rear)	805 mm (front), 1,045 mm (rear)
Minimum ground clearance	130 mm	130 mm	130 mm
<b>INTERIOR DIMENSIONS</b>			
Head room	978 mm (front), 938 mm (rear)	978 mm (front), 938 mm (rear)	978 mm (front), 938 mm (rear)
Leg room	1,083 mm (front), 884 mm (rear)	1,083 mm (front), 884 mm (rear)	1,083 mm (front), 884 mm (rear)
Shoulder room	1,430 mm (front), 1,387 mm (rear)	1,430 mm (front), 1,387 mm (rear)	1,430 mm (front), 1,387 mm (rear)
<b>WEIGHT</b>			
Curb weight	1,666 kg – 1,753 kg	1,673 kg	1,775 kg – 1,816 kg
GVWR	2,190 kg	2,120 kg	2,265 kg
Maximum towing capacity	Not recommended	Not recommended	Not recommended
<b>CAPACITIES</b>			
Fuel tank	60 L	60 L	60 L
Engine oil	5.7 L	5.7 L	7.7 L
Engine coolant	2.8 L	2.8 L	5.6 L
Transmission fluid	9.2 L	1.9 L	9.2 L



# GENESIS G80 COLOURS & TRIMS

## INTERIOR—G80



BLACK NAPPA LEATHER

SAPELE OPEN PORE WOOD

ALUMINUM ACCENTS



BROWN NAPPA LEATHER

WALNUT OPEN PORE WOOD

ALUMINUM ACCENTS



GREY NAPPA LEATHER

BROWN ASH OPEN PORE WOOD

ALUMINUM ACCENTS



IVORY NAPPA LEATHER

BLACK ASH OPEN PORE WOOD

ALUMINUM ACCENTS



## INTERIOR—G80 SPORT



BLACK NAPPA LEATHER

GENUINE CARBON FIBRE

DARK FINISH ALUMINUM ACCENTS



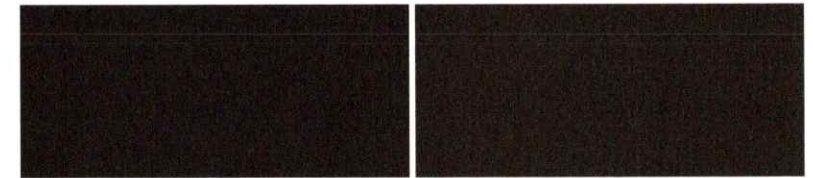
TWO-TONE GREY/BLACK NAPPA LEATHER

GENUINE CARBON FIBRE

DARK FINISH ALUMINUM ACCENTS

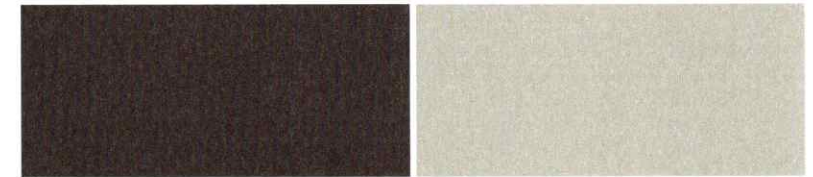
Due to the print production process, the colours shown throughout this brochure may vary slightly from the actual hue. Special order may be required for certain exterior and interior combinations.

## EXTERIOR



VICTORIA BLACK

SERENGETI BROWN<sup>11</sup>



HIMALAYAN GREY

SANTIAGO SILVER<sup>11</sup>



CASABLANCA WHITE

SIBERIAN ICE<sup>12</sup>



ADRIATIC BLUE<sup>11</sup>

HAVANA RED<sup>12</sup>



MALLORCA BLUE

POLAR ICE<sup>12</sup>

<sup>11</sup>Only available on Genesis G80.

<sup>12</sup>Only available on Genesis G80 Sport.

2018 Genesis G80 and Genesis G80 Sport colours and trims shown.



# GENESIS G80 SPECIFICATIONS

	G80 3.8	G80 3.3T SPORT	G80 5.0
<b>ENGINE</b>			
Type	3.8L DOHC 24-valve V6 with Dual Continuously Variable Valve Timing (D-CVVT), Gasoline Direct Injection (GDI), and 3-stage Variable Induction System (VIS)	Twin-turbocharged 3.3L DOHC 24-valve V6 with Dual Continuously Variable Valve Timing (D-CVVT), Gasoline Direct Injection (GDI), and Variable Intake System (VIS)	5.0L DOHC 32-valve V8 with Dual Continuously Variable Valve Timing (D-CVVT), Gasoline Direct Injection (GDI), and 2-stage Variable Induction System (VIS)
Displacement	3,778 cc	3,342 cc	5,038 cc
Materials	Aluminum block and head	Aluminum block and head	Aluminum block and head
Horsepower	311 @ 6,000 rpm (Regular fuel)	365 @ 6,000 rpm (Premium fuel)	420 @ 6,000 rpm (Premium fuel)
Torque	293 lb-ft @ 5,000 rpm (Regular fuel)	376 lb-ft @ 1,300-4,500 rpm (Premium fuel)	383 lb-ft @ 5,000 rpm (Premium fuel)
Turbocharger type	-	Parallel twin single-scroll	-
<b>TRANSMISSION AND DRIVE SYSTEM</b>			
Drive configuration	Full-time All-Wheel Drive (AWD) with integrated transfer case actuator and variable torque split clutch	Full-time All-Wheel Drive (AWD) with integrated transfer case actuator and variable torque split clutch	Full-time All-Wheel Drive (AWD) with integrated transfer case actuator and variable torque split clutch
Transmission type	8-speed electronic automatic with overdrive lock-up torque converter and manual mode with wheel-mounted shift paddles	8-speed electronic automatic with overdrive lock-up torque converter and manual mode with wheel-mounted shift paddles	8-speed electronic automatic with overdrive lock-up torque converter and manual mode with wheel-mounted shift paddles
<b>BRAKING</b>			
Front	345 mm x 30 mm ventilated rotors, 4-piston fixed calipers	360 mm x 30 mm ventilated rotors, 4-piston fixed calipers	360 mm x 30 mm ventilated rotors, 4-piston fixed calipers
Rear	314 mm x 13 mm solid rotors, 1-piston calipers	330 mm x 20 mm ventilated rotors, 1-piston calipers	314 mm x 13 mm solid rotors, 1-piston calipers
<b>EXTERIOR DIMENSIONS</b>			
Wheelbase	3,010 mm	3,010 mm	3,010 mm
Overall length	4,990 mm	4,990 mm	4,990 mm
Overall width	1,890 mm	1,890 mm	1,890 mm
Overall height	1,480 mm	1,480 mm	1,480 mm
Minimum ground clearance	130 mm	130 mm	130 mm
<b>NATURAL RESOURCES CANADA FUEL CONSUMPTION RATINGS</b>			
City	13.4 L/100km	13.8 L/100km	15.6 L/100km
Highway	9.6 L/100km	9.7 L/100km	10.4 L/100km
Combined	11.7 L/100km	11.9 L/100km	13.2 L/100km

## FEATURES

		3.8 LUXURY	3.8 TECHNOLOGY	3.3 SPORT	5.0 ULTIMATE
<b>CHASSIS</b>					
Wheels and Tires	18" x 8.0J aluminum alloy wheels with P245/45R18 all-season tires	•	•	-	-
	19" Sport-type staggered-width aluminum alloy wheels with all-season tires (P245/40R19 front, P275/35R19 rear)	-	-	•	-
	19" staggered-width aluminum alloy wheels with all-season tires (P245/40R19 front, P275/35R19 rear)	-	-	-	•
	Temporary spare tire	•	•	•	•
Suspension	5-link independent suspension	•	•	•	•
	Sport-tuned Genesis Adaptive Control Suspension (GACS)	-	-	•	-
	Genesis Adaptive Control Suspension (GACS)	-	-	-	•
<b>EXTERIOR FEATURES</b>					
Exterior Lighting	Mirror-mounted welcome lights with "Genesis" logo projection	•	•	•	•
	High Beam Assist (HBA)	•	•	•	•
	LED fog lights	•	•	-	•
	Bi-Xenon High Intensity Discharge (HID) headlights	•	•	-	-
	Full LED headlights with Adaptive Cornering System (ACS)	-	-	-	•
Exterior Trim	Dual exhaust finishers	•	•	-	-
	Quad exhaust finishers	-	-	•	•
Outside Mirrors	Power-adjustable, power-folding, heated	•	•	•	•
	Electrochromic auto-dimming	•	•	•	•
	Body colour housings	•	•	-	•
	Black housings	-	-	•	-



## FEATURES (CONTINUED)

		3.8 LUXURY	3.8 TECHNOLOGY	3.3 SPORT	5.0 ULTIMATE
<b>EXTERIOR FEATURES</b>					
Glass	Acoustically-laminated glass (windshield, front and rear doors)	•	•	•	•
Wipers	Speed-sensitive front windshield wipers with 2 speeds and variable intermittent settings	•	•	•	•
	Rain-sensing function	•	•	•	•
<b>INTERIOR FEATURES</b>					
Interior Trim	Leather door trim inserts	•	•	•	•
	Textured genuine aluminum accents	•	•	•	•
	Illuminated aluminum door scuff plates	•	•	•	•
	Open pore natural wood trim (doors, dashboard)	•	•	-	-
	Genuine carbon fibre trim (doors, dashboard)	-	-	•	-
	Cloth headliner	•	•	-	-
	Microsuede headliner	-	-	-	•
Instrumentation	4.3" TFT LCD instrument panel display	•	-	-	-
	7.0" TFT LCD instrument panel display	-	•	•	•
	Head-Up Display (HUD)	-	•	•	•
HVAC	Dual-zone automatic climate control	•	•	•	•
	CO <sub>2</sub> sensor control system dual mode HVAC	-	•	•	•
<b>COMFORT AND CONVENIENCE</b>					
Seating	16-way power-adjustable driver's seat with side bolster and thigh support adjustments, 4-way lumbar adjustment	•	•	-	•
	Sport-type 16-way power-adjustable driver's seat with side bolster and thigh support adjustments, 4-way lumbar adjustment	-	-	•	-
	12-way power-adjustable passenger's seat with 4-way lumbar adjustment	•	•	•	•
	Rear seat pass-through opening	•	•	•	•
	Heated front seats	•	•	•	•
	Heated rear seats	•	•	•	•
	Ventilated front seats	•	•	•	•
	Nappa leather seating surfaces	•	•	•	•
Steering Wheel	Leather-wrapped 4-spoke steering wheel with shift paddles	•	•	-	•
	Leather-wrapped 3-spoke Sport steering wheel with aluminum shift paddles (12.7 mm smaller diameter)	-	-	•	-
	Heated with 30-minute timer	•	•	•	•
	Audio, Bluetooth®, cruise control, and voice command controls	•	•	•	•
	Power tilt-and-telescopic adjustment	•	•	•	•
	Haptic feedback (linked to BCW and LKA functions)	•	•	•	•
Multimedia	Apple CarPlay™, Android Auto™, USB, and auxiliary connectivity	•	•	•	•
	Bluetooth® hands-free phone system and audio streaming	•	•	•	•
	8.0" touch-screen navigation system with 4.5 GB of storage	•	-	-	-
	900-watt Lexicon® AM/FM/XM/CD/MP3 7.1 surround sound audio system with 14 speakers	•	-	-	-
	9.2" touch-screen navigation system with 720p high-definition display and 64 GB SSD	-	•	•	•
	900-watt Lexicon® AM/FM/XM/DVD/MP3 7.1 surround sound audio system with 17 speakers	-	•	•	•
	Driver Information System (DIS) with multimedia controller	-	•	•	•
Convenience Features	Power windows with auto up/down and pinch protection	•	•	•	•
	Panoramic sunroof	•	•	•	•
	Proximity keyless entry with push-button ignition	•	•	•	•
	Drive Mode Select (DMS) controlling steering, engine, transmission response, and GACS suspension (if equipped)	•	•	•	•

## COMFORT AND CONVENIENCE

		3.8 LUXURY	3.8 TECHNOLOGY	3.3 SPORT	5.0 ULTIMATE
<b>Convenience Features</b>					
	Proximity-activated hands-free trunk opening ("Smart Trunk")	•	•	•	•
	Electrochromic auto-dimming rear-view mirror with integrated HomeLink® transceiver and compass	•	•	•	•
	Rear-view camera	•	•	•	•
	Front console centre armrest with dual-tier storage box	•	•	•	•
	Centre console with mobile phone storage tray, dual cupholders, and dual 12-volt outlets	•	•	•	•
	Locking glovebox with damped operation	•	•	•	•
	Driver's Integrated Memory System (IMS) for seat, mirror, steering wheel, and Head-Up Display (HUD) positions (2 memory settings)	•	•	•	•
	Adaptive Cruise Control (ACC) with stop-and-go capability	•	•	•	•
	Electronic Parking Brake (EPB) with Auto Vehicle Hold (AVH)	•	•	•	•
	Rear side window sun shades	•	•	•	•
	Front and rear parking assistance sensors	•	•	•	•
	Power open/close trunk lid with remote operation	-	•	•	•
	Wireless charging pad (Qi standard)	-	•	•	•
	Multi-View Camera System (MVCS)	-	•	•	•
	Card-type proximity key (included with 2 traditional key fobs)	-	-	-	•
	Power-operated rear window sun shade	-	-	-	•

## SAFETY AND CONVENIENCE

		3.8 LUXURY	3.8 TECHNOLOGY	3.3 SPORT	5.0 ULTIMATE
<b>Restraint Systems</b>					
	Airbags (9) — driver's knee (1), front impact (2), front seatmounted side impact (2), rear seat-mounted side impact (2), front/rear side curtains (2)	•	•	•	•
	Front and rear outboard seatbelt pre-tensioners and force limiters	•	•	•	•
	LATCH lower anchors and upper tether anchors	•	•	•	•
	Anti-whiplash front head restraints	•	•	•	•
	Pre-Safety seatbelt	•	•	•	•
<b>Active Safety Systems</b>					
	Vehicle Stability Management (VSM)	•	•	•	•
	Electronic Stability Control (ESC) with Traction Control System (TCS)	•	•	•	•
	Anti-lock Braking System (ABS) with Electronic Brake-force Distribution (EBD) and Brake Assist (BA)	•	•	•	•
	Driver Attention Warning (DAW)	•	•	•	•
	Blind-Spot Collision Warning (BCW) with Rear Cross-traffic Collision Warning (RCCW) and Lane Change Assist (LCA)	•	•	•	•
	Lane Keep Assist (LKA) with Lane Departure Warning (LDW)	•	•	•	•
	Forward Collision Avoidance-Assist (FCA) with Pedestrian Detection	•	•	•	•

• Standard - Not Available



# GENESIS G90 COLOURS & TRIMS





## INTERIOR



BLACK NAPPA LEATHER WITH WALNUT WOOD AND ALUMINUM ACCENTS



BEIGE NAPPA LEATHER WITH GREY ASH WOOD AND ALUMINUM ACCENTS

## EXTERIOR



VICTORIA BLACK



SERENGETI BROWN



HIMALAYAN GREY



SANTIAGO SILVER



ADRIATIC BLUE

CASABLANCA WHITE

Due to the print production process, the colours shown throughout this brochure may vary slightly from the actual hue. Special order may be required for certain exterior and interior combinations.



SAN SIMEON GREY

2018 Genesis G90 colours and trims shown.



BROWN NAPPA LEATHER WITH VAVONA WOOD AND ALUMINUM ACCENTS



# GENESIS G90 SPECIFICATIONS

	G90 3.3T	G90 5.0
<b>ENGINE</b>		
Type	Twin-Turbocharged 3.3L DOHC 24-valve V6 with Dual Continuously Variable Valve Timing (D-CVVT)	5.0L DOHC 32-valve V8 with Dual Continuously Variable Valve Timing (D-CVVT)
Displacement	3,342 cc	5,038 cc
Materials	Aluminum block and head	Aluminum block and head
Horsepower	365 @ 6,000 rpm	420 @ 6,000 rpm
Torque	376 lb-ft @ 1,300-4,500 rpm	383 lb-ft @ 5,000 rpm
<b>TRANSMISSION AND DRIVE SYSTEM</b>		
Drive configuration	Full-time All-Wheel Drive (AWD) with integrated transfer case actuator and variable torque split clutch	Full-time All-Wheel Drive (AWD) with integrated transfer case actuator and variable torque split clutch
Transmission type	8-speed electronic automatic with overdrive lock-up torque converter and manual mode with wheel-mounted shift paddles	8-speed electronic automatic with overdrive lock-up torque converter and manual mode with wheel-mounted shift paddles
<b>EXTERIOR DIMENSIONS</b>		
Wheelbase	3,160 mm	3,160 mm
Overall length	5,205 mm	5,205 mm
Overall width	1,915 mm	1,915 mm
Overall height	1,495 mm	1,495 mm
Overhang	860 mm (front), 1,185 mm (rear)	860 mm (front), 1,185 mm (rear)
Minimum ground clearance	130 mm	130 mm
<b>FUEL CONSUMPTION</b>		
City	13.7 L / 100 km	15.2 L / 100 km
Highway	9.7 L / 100 km	10.2 L / 100 km
Combined	11.9 L / 100 km	13.0 L / 100 km

## FEATURES

		3.3T	5.0
<b>CHASSIS</b>			
Wheels and Tires	19" staggered-width aluminum alloy wheels with all-season tires (P245/45R19 front, P275/40R19 rear) Temporary spare tire	•	•
Suspension	5-link independent suspension Genesis Adaptive Control Suspension (GACS)	•	•
<b>EXTERIOR FEATURES</b>			
Exterior Lighting	Mirror-mounted welcome lights with "Genesis" logo projection High Beam Assist (HBA) Full LED headlights with Adaptive Cornering System (ACS)	•	•
Outside Mirrors	Power-adjustable, power-folding, heated	•	•
Glass	Acoustically-laminated glass (windshield, front and rear doors)	•	•
Wipers	Speed-sensitive front windshield wipers with 2 speeds and variable intermittent settings Rain-sensing function Windshield wiper de-icer	•	•
<b>INTERIOR FEATURES</b>			
Interior Trim	Leather-wrapped dashboard Leather door trim inserts, armrests Genuine wood trim (centre console, doors, dashboard, back of front seats, rear console) Genesis door sill plates, front and rear Microsuede headliner	•	•

		3.3T	5.0
<b>INTERIOR FEATURES</b>			
Instrumentation	7.0" TFT LCD instrument panel display with multi-function trip computer Head-Up Display (HUD)	•	•
HVAC	Three-zone automatic temperature control (driver / passenger / rear compartment) Dual mode front vent & fan speed control with CO <sub>2</sub> sensor Rear zone HVAC control (console-mounted) Rear seat heater ducts (B-pillar & centre console-mounted)	•	•
Interior Lighting	Interior ambient lighting (adjustable – 7 colours)	•	•
<b>COMFORT AND CONVENIENCE</b>			
Seating (Front)	Nappa leather seating surfaces 22-way power-adjustable driver's seat with power lumbar 16-way power-adjustable front passenger's seat with power lumbar Heated front seats Ventilated front seats	•	•
Seating (Rear)	Nappa leather seating surfaces Heated rear seats (outboard seats) Centre armrest with dual cup holders and control console Rear seat pass-through opening 14-way power-adjustable right rear outboard seat 12-way power-adjustable left rear outboard seat Ventilated rear seats (outboard seats)	•	•



## FEATURES (CONTINUED)

	3.3T	5.0
<b>COMFORT AND CONVENIENCE</b>		
<b>Steering Wheel</b>		
Leather-wrapped 4-spoke steering wheel with shift paddles	•	•
Audio, Bluetooth®, cruise control, voice command, and vehicle information controls	•	•
Power tilt-and-telescopic adjustment (with memory)	•	•
Heated (2 settings) with 30-minute timer	•	•
Haptic feedback (linked to select Smart Sense functions)	•	•
<b>Multimedia</b>		
17-speaker Lexicon® AM/FM/SiriusXM®/DVD/MP3 surround sound audio system (900 watts, 12 channels)	•	•
Quantum Logic Surround (QLS) with Clari-fi™ Music Restoration Technology	•	•
12.3" navigation system with 720p high-definition display, 64 GB SSD, and SiriusXM® NavTraffic®	•	•
Driver Information System (DIS) with multimedia controller	•	•
Wireless device charging (front – Qi standard)	•	•
iPod®/USB/auxiliary connectivity (mounted in centre console)	•	•
Rear seat USB charging port (mounted in rear centre console)	•	•
Bluetooth® hands-free phone system	•	•
Speed-sensitive volume control	•	•
Rear seat entertainment system with dual 10.3" seatback-mounted high-definition displays	-	○
<b>Convenience Features</b>		
Power windows with auto up/down and pinch protection (all windows)	•	•
Power door locks	•	•
Power door latch system (pulls door shut once it touches the latch)	•	•
Power-operated rear side window sun shades	•	•
Power-operated rear window sun shade	•	•
Sunroof (power tilt and slide with one-touch operation)	•	•
Proximity keyless entry with push-button ignition	•	•
Power trunk lid with hands-free proximity opening	•	•
Electrochromic auto-dimming rearview mirror with integrated HomeLink® transceiver and compass	•	•
Front console centre armrest with storage box	•	•
Centre console with mobile phone storage/charging tray, dual cupholders, and dual 12-volt outlets	•	•
Locking glovebox with damped operation	•	•
Cargo net	•	•
Drive Mode Select (DMS) [controls response of steering, engine, transmission, and Genesis Adaptive Control Suspension (GACS)]	•	•
Driver's Integrated Memory System (IMS) for seat, outside mirrors, steering wheel, and Head-Up Display (HUD) positions (3 memory settings)	•	•
Front passenger's Integrated Memory System (IMS) for seat position (2 memory settings)	•	•
Multi-View Camera System (MVCS)	•	•
Front and rear parking assistance sensors	•	•
Adaptive Cruise Control (ACC) with stop-and-go capability	•	•
Electronic Parking Brake (EPB) with Auto Vehicle Hold (AVH)	•	•
Integrated Memory System (IMS) for outboard rear seats (2 memory settings each)	-	•
Illuminated rear seat vanity mirrors	-	•

	3.3T	5.0
<b>SAFETY AND CONVENIENCE</b>		
<b>Restraint Systems</b>		
Airbags (9) – driver's knee (1), front impact (2), front seat-mounted side impact (2), rear seat-mounted side impact (2), front/rear side curtains (2)	•	•
Three-point seatbelts	•	-
Front and rear outboard seatbelt pre-tensioners and force limiters	•	•
LATCH lower anchors and upper tether anchors	•	•

	3.3T	5.0
<b>SAFETY AND CONVENIENCE</b>		
<b>Restraint Systems</b>		
Energy absorbing front seats	•	•
Pre-Safety seatbelt	•	•
<b>Active Safety Systems</b>		
Vehicle Stability Management (VSM)	•	•
Electronic Stability Control (ESC) with Traction Control System (TCS)	•	•
Anti-lock Braking System (ABS) with Electronic Brake-force Distribution (EBD) and Brake Assist (BA)	•	•
Active Blind-Spot Collision Warning (ABCW) with Rear Cross-traffic Collision Warning (RCCW) and Lane Change Assist (LCA)	•	•
Lane Keep Assist (LKA) with Lane Departure Warning (LDW)	•	•
Forward Collision Avoidance-Assist (FCA) with Pedestrian Detection	•	•

• Standard - Not Available ○ Optional







<sup>TM</sup>/<sup>®</sup> The Genesis names, logos, product names, feature names, images and slogans are trademarks owned or licensed by Genesis Motors Canada, a division of Hyundai Auto Canada Corp. Specifications, features, illustrations, accessories, materials and equipment and all other information shown in this brochure is based on the latest information available at the time of publication. Although descriptions are believed to be correct, accuracy cannot be guaranteed. Genesis Motors Canada reserves the right to make any changes or modifications at any time, without notice or obligation, including, without limitation, in colour, specifications, features, accessories, materials, equipment and models. Some vehicles are shown with optional equipment. All Genesis warranties have no deductible. <sup>1</sup>The Genesis Comprehensive Limited Warranty coverage program covers most vehicle components against defects in workmanship under normal use and maintenance conditions. The Genesis 24-Hour Roadside Assistance program is a limited service and does not cover certain costs or expense. Roadside Assistance is not a warranty. Some limitations apply. See an authorized distributor of Genesis products for complete details. Complimentary Scheduled Maintenance plan covers most regular maintenance as described in the service plan of the Owner's Manual, including for example, oil changes, tire rotation and regular inspection. The plan does not include repair or maintenance of parts that experience wear and tear, such as tire treads, brake pads, windshield wipers, etc. and other repairs that may be identified in the regular inspection performed as part of the plan. Some limitations apply. See an authorized Genesis distributor for complete details. Includes complimentary map updates for 5 years with a maximum of 10 updates. <sup>2</sup>Estimated. <sup>3</sup>Forward Collision Avoidance-Assist (FCA-A) is designed to detect vehicles that are directly in front of the vehicle. FCA-A will not detect all vehicles and objects. FCA-A may not work on winding or hilly roads, during certain weather conditions such as rain, snow, fog and any other times of limited visibility. FCA-A initiates full braking at speeds between 8 and 75 km/h (vehicle detection) or 8 to 65 km/h (pedestrian detection). FCA-A will not detect all pedestrians under certain conditions. See Owner's Manual for detailed descriptions of example conditions in which FCA-A may not detect a pedestrian. FCA-A is not a substitute for safe driving. Always check your surroundings when driving. See Owner's Manual for further details and limitations. <sup>4</sup>Never rely completely on Blind-Spot Collision Warning (BCW) and be sure to use proper lane changing procedures. BCW will not detect every object or vehicle and will not prevent accidents. Always look over your shoulder and use your mirrors to confirm clearance. See Owner's Manual for further details and limitations. <sup>5</sup>Lane Keep Assist system operates above approximately 69 km/h and only when the lane markings are clearly visible on the road and detected by the system. It will not prevent loss of control. See Owner's Manual for more information and limitations. <sup>6</sup>Adaptive Cruise Control (ACC) with stop/start capability is not a collision-avoidance or warning device. ACC is for highway use only and should not be used in poor weather, heavy or varying traffic, or on winding or slippery roads. Driver remains responsible to slow or stop the vehicle to avoid a collision. Acceleration after the vehicle comes to a complete stop will only occur when the vehicle has been stopped for less than three seconds. See Owner's Manual for further details and limitations. <sup>7</sup>Applies only to MY18 Genesis G80 3.3T Sport and 5.0 Ultimate trims, and to MY18 Genesis G90. Vehicles must be equipped with LED headlights with Adaptive Cornering System to qualify. The SiriusXM<sup>™</sup> name is a trademark of SiriusXM Satellite Radio Inc. Bluetooth<sup>®</sup> word mark and logos are registered trademarks owned by Bluetooth SIG, Inc. HomeLink<sup>®</sup> is a registered trademark of Johnson Controls Inc. Lexicon<sup>®</sup> is a registered trademark of Harman International Industries Inc. <sup>8</sup>Apple CarPlay<sup>™</sup> works with iPhone 5s, iPhone 5c, iPhone 5 and later models running the latest version of iOS 7 and above. CarPlay<sup>™</sup> may not be available on all devices and may not be available in all countries or regions. Subject to app compatibility. Visit [www.apple.com](http://www.apple.com) for further details and any applicable limitations. Apple, Apple CarPlay, Apple Music, and iPod are trademarks of Apple Inc. <sup>9</sup>Android Auto<sup>™</sup> is compatible with Android phones running Android Lollipop or newer. Android Auto may not be available on all devices and is not available in all countries or regions. Additional apps may be required. Subject to app compatibility. Visit [www.android.com](http://www.android.com) for further details and any applicable limitations. Android, Android Auto, Google, and Google Maps are trademarks of Google Inc. All other trademarks and trade names are those of their respective owners. Some images of international models are shown in this brochure. Some features not available in Canada. Please consult your local Genesis distributor for details or visit [genesis.ca](http://genesis.ca).





**GENESIS®**

GENESIS.CA