

2020

Passport



Your Passport to adventure.
Every great adventure starts
with a Passport. This rugged
explorer makes going beyond
your comfort zone that much
more comfortable.

Overview 02

Exterior 03

Interior 05

Versatility/Cargo 07

Performance & Efficiency 09

Technology 12

HondaLink™ and
Advanced Connectivity 13

Honda Sensing™ Technologies 16

Safety 17

Colours 19

Trims 21

Warranty 22

The Power of Dreams 23



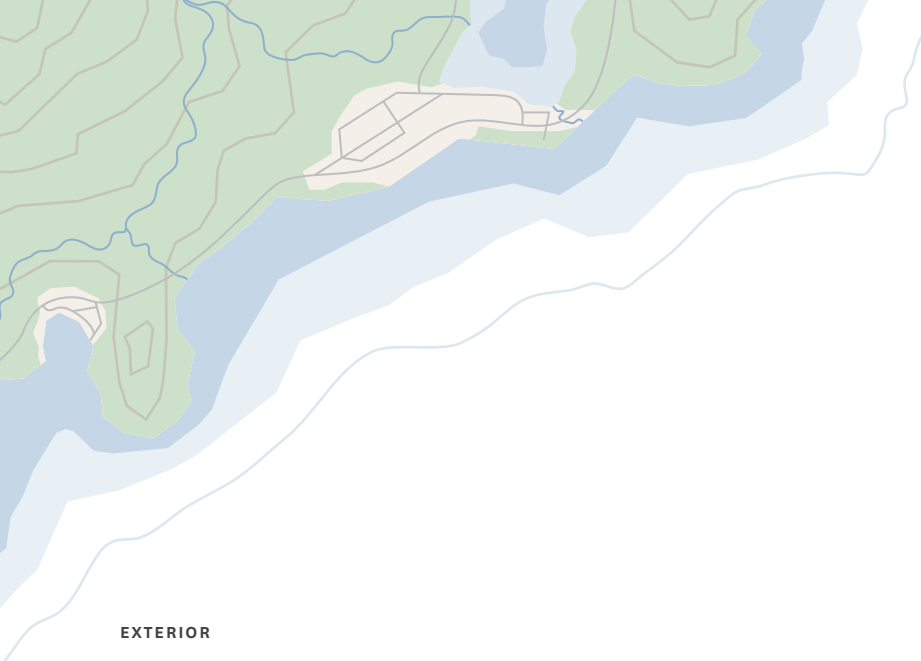


Accessorized Passport Touring in Deep Scarlet Pearl.

OVERVIEW

Answer the call of the wild.

The versatile Passport is here and ready for virtually everything you throw at it, in it, or on top of it. Sure, you don't have to drive it to the ends of the earth, but considering how well it handles both on and off the road, it's nice to have the option. And speaking of options, this Passport features three robust trims to suit your style: Sport, EX-L, and Touring.



EXTERIOR

Forged for the outdoors.

As rugged as the land we call home, the Passport is designed for the athlete in all of us. From its sculpted exterior to its 20" aluminum-alloy wheels, you'll make the scenic route that much more scenic.

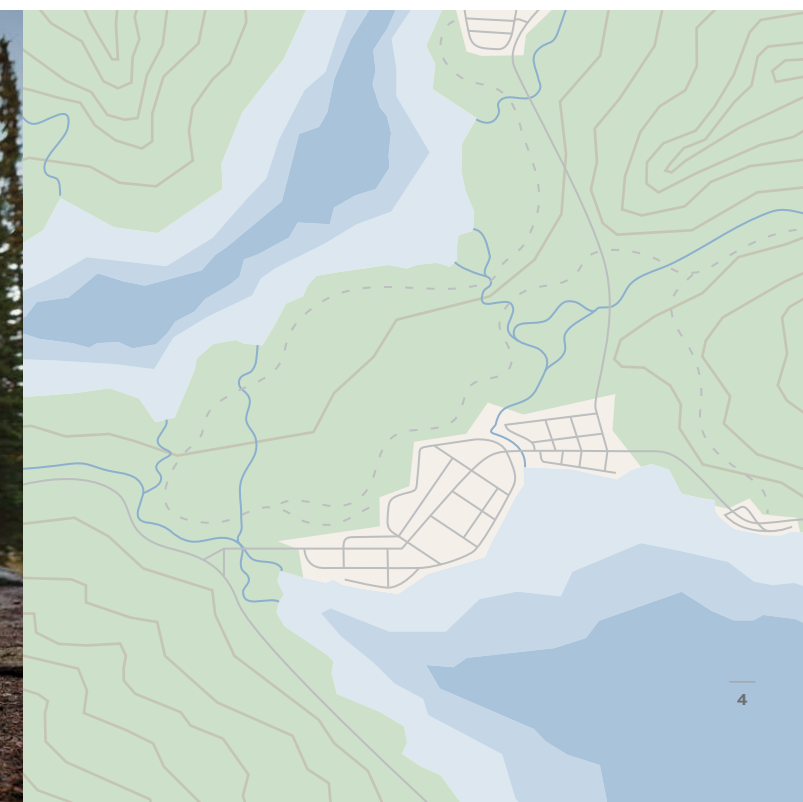
With front and rear splash guards, roof rails, and LED fog lights, no matter where the terrain takes you, you're in good hands. Looking to become one with nature? A one-touch power moonroof with tilt feature brings fresh air with a fresh perspective.



Accessorized Passport Touring in Modern Steel Metallic.



Passport Touring in Modern Steel Metallic.





INTERIOR

Discover the great indoors.

Get away from it all without giving anything up. The interior of the Passport is precisely crafted for the explorer in all of us.

For that special type of Canadian cold, the Passport features a heated leather-wrapped steering wheel and heated front and available second-row seats, while the available ventilated front seats help you keep your cool when the temperature rises.

And because leading the way is as tough a job as any, the driver's seat features 10-way power adjustment including power lumbar support and an armrest with available adjustability. In a hurry? The Passport also features a proximity key entry system with pushbutton start.

Key Features: Steering wheel-mounted paddle shifters, available body-coloured front and rear parking sensors, available leather-trimmed seating surfaces, USB device connectors¹

1. None of the features we describe are intended to replace the driver's responsibility to exercise due care while driving. Drivers should not use handheld devices or operate certain vehicle features unless it is safe and legal to do so. Some features have technological limitations. For additional feature information, limitations and restrictions, please visit www.honda.ca/disclaimers and refer to the vehicle's Owner's Manual.



Passport Touring in Modern Steel Metallic.





Accessorized Passport Touring in Modern Steel Metallic.



VERSATILITY/CARGO

Packed with possibilities.

Take it all with you as you leave it all behind. With abundant cargo space, you can afford to bring along that extra camera bag or mattress pad, just in case. Need more? In the back, the Passport features a flip-up cargo lid, revealing a segmented cargo compartment – with removable and washable bins – as well as a basement cargo space, proving the Passport offers more than what meets the eye.

So you can fit virtually everything, but what about getting virtually everywhere? Fear not, because with the Intelligent Variable Torque Management (iVTM4™) AWD system, the Passport is engineered to handle on- and off-road with confidence. With a ground clearance of 205 mm, generous departure angle, and a Touring trim with wider tires offering increased grip, you can explore at your pace.

Key Features: Flip-up cargo lid with cleanable plastic bins, basement cargo, ground clearance of 205 mm, improved departure angle, wider tires for better grip (Touring trim)



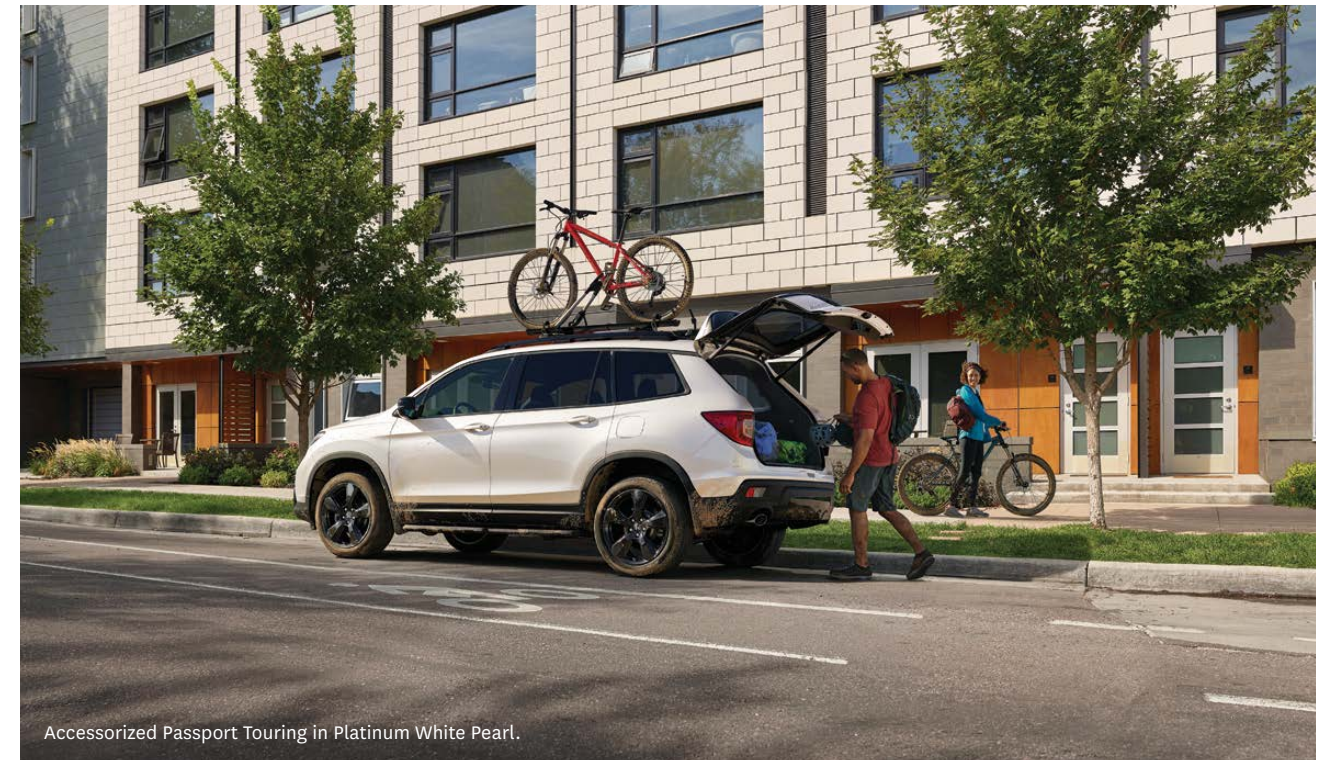
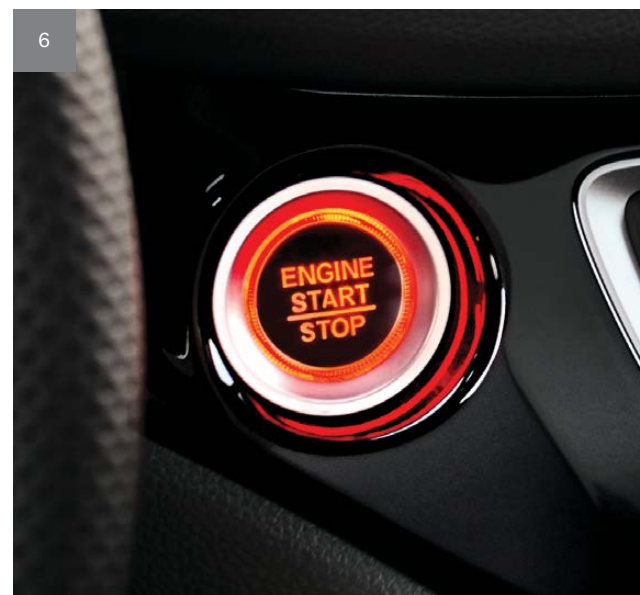
PERFORMANCE & EFFICIENCY

Your road trip shouldn't be spent at a gas station.

Whether you're gearing up for the open road, or finding your way off it, make freedom more fun with a 3.5-litre, Direct Injection i-VTEC® V6 engine. Mix in a 9-speed automatic transmission with Grade Logic Control, and you and your gear are always in gear.

And as you explore the planet, do more to help maintain it. The Passport features our Eco Assist™ system, ECON mode, idle-stop and Variable Cylinder Management® to help ensure you spend more time adventuring, and less time at the pump.





Accessorized Passport Touring in Platinum White Pearl.

TECHNOLOGY

Trek- and tech-savvy.

Every adventurer needs a co-pilot. With the Passport's Display Audio System¹ equipped with the available Honda Satellite-Linked Navigation System^{TM1,2} as well as a bounty of available HondaLink^{TM1,3,4} features, we're on your side while you go.

And because unplugging can sometimes have an expiry date, the Passport features available wireless charging. Want more? The Passport's CabinControlTM app^{1,3} and infotainment system with volume knob ensures you'll be in tune with both nature and your passengers.

1. Display Audio System¹ with available Honda Satellite-Linked Navigation System^{TM1,2} and bilingual Voice Recognition
2. Multi-angle rearview camera¹ with dynamic guidelines
3. Available 550-watt AM/FM Premium audio system with MP3/Windows Media[®] Audio playback capability and 10 speakers including subwoofer
4. Apple CarPlay^{TM1,3}/Android Auto^{TM1,3}
5. Available Honda LaneWatchTM blind spot display¹
6. Proximity key entry system with pushbutton start

1. None of the features we describe are intended to replace the driver's responsibility to exercise due care while driving. Drivers should not use handheld devices or operate certain vehicle features unless it is safe and legal to do so. Some features have technological limitations. For additional feature information, limitations and restrictions, please visit www.honda.ca/disclaimers and refer to the vehicle's Owner's Manual.

2. Map database covers major metropolitan areas in Canada and the 48 contiguous U.S. states.

3. Only compatible with certain devices and operating systems. Operation may be dependent upon: 1. GPS satellite signal reception and available cellular data and/or voice connection; or 2. connection to vehicle's built-in Wi-Fi hotspot, if applicable. Associated charges (incl. data plans, roaming charges or other amounts charged by your wireless carrier) may apply.

4. Subscription to HondaLinkTM services is required. HondaLinkTM-equipped vehicles come with complimentary time-limited trial subscriptions; fees, taxes and other charges will apply in order to continue subscription services upon trial expiry. The availability of certain GPS satellite and/or cellular networks is required for HondaLinkTM to operate properly. Service interruptions may occur and/or vehicle system upgrades may be required if cellular network availability is compromised. Some restrictions may apply. For additional HondaLinkTM information, please visit www.honda.ca/hondalink and www.honda.ca/privacy.

Stay connected, even off-grid.

The Passport is as tech-savvy as you are. The available HondaLink™ Subscription Services help connect you to a world of features both inside and outside of your Passport, while other available apps and features are designed to entertain and inform.

HONDALINK™^{1,2,3} SUBSCRIPTION SERVICES



Remote Door Lock/Unlock

Whether you're locked out or forgot to lock up, count on quick, keyless entry and remote assurance from almost anywhere.



Geofence Alert

Get notified when your car enters or leaves a designated region.



Stolen Vehicle Locator

Designed to help recover your stolen vehicle faster. The system uses sophisticated technology to assist the authorities with attempting to find your vehicle.



Auto Collision Notification (ACN)

In the event of an accident, a Response Agent automatically checks in and helps send emergency care, even when passengers aren't able to respond.

ADVANCED CONNECTIVITY



AT&T Wi-Fi Hotspot

Connect up to seven compatible devices with your vehicle's available built-in Wi-Fi hotspot^{2,4}. Enjoy up to 4G LTE speeds on multiple devices. From the open road, you'll be able to stream hours of videos, play games, get real-time email access and surf the web. You'll be able to stay connected up to 50 feet away from your Passport.



CabinControl™ app

The standard CabinControl™^{1,2} feature gives everyone the opportunity to control the rear temperature, add music to a playlist and send an address to the available Honda Satellite-Linked Navigation System™^{1,5}

1. None of the features we describe are intended to replace the driver's responsibility to exercise due care while driving. Drivers should not use handheld devices or operate certain vehicle features unless it is safe and legal to do so. Some features have technological limitations. For additional feature information, limitations and restrictions, please visit www.honda.ca/disclaimers and refer to the vehicle's Owner's Manual.

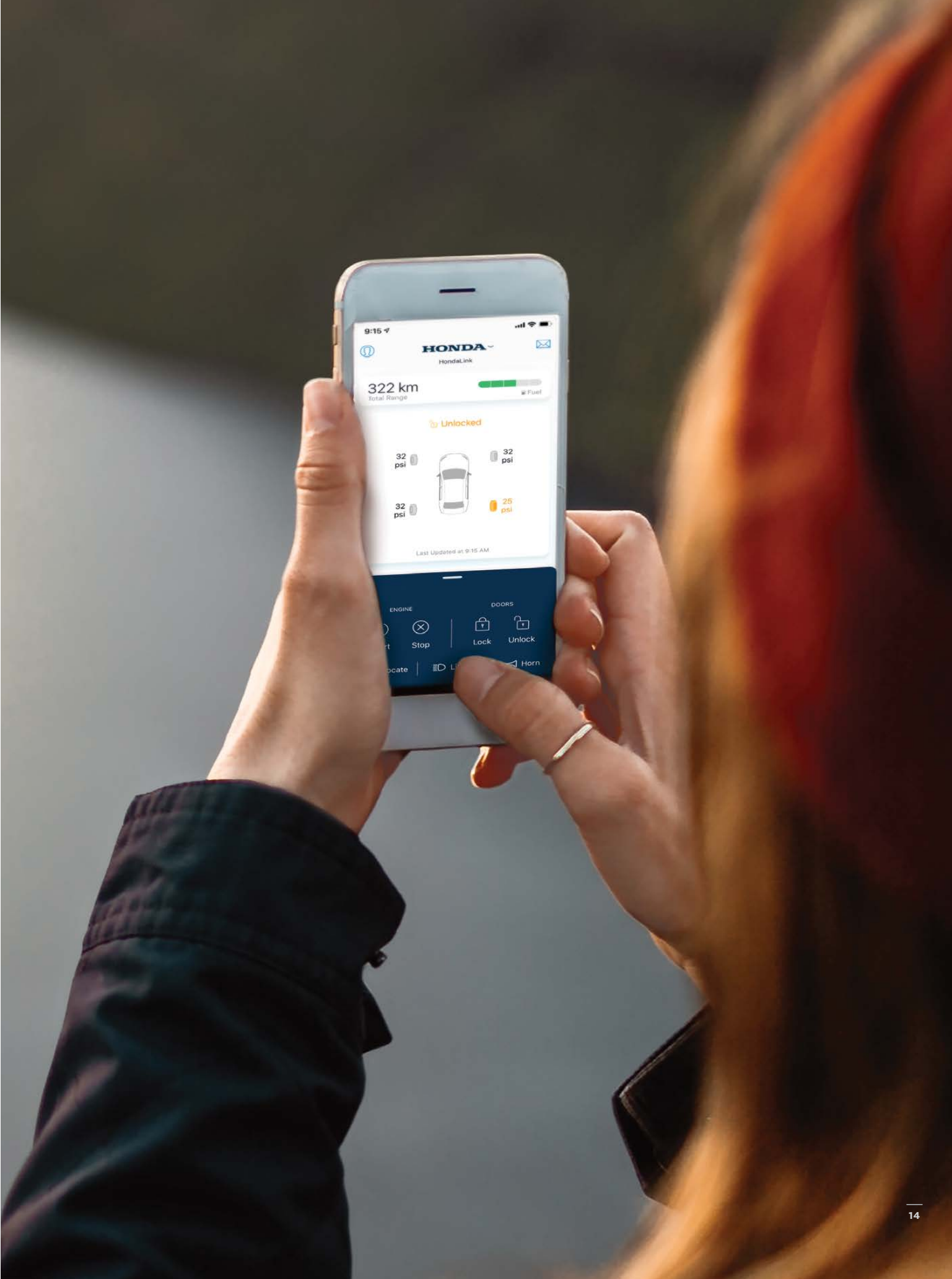
2. Only compatible with certain devices and operating systems. Operation may be dependent upon:

1. GPS satellite signal reception and available cellular data and/or voice connection; or 2. connection to vehicle's built-in Wi-Fi hotspot, if applicable. Associated charges (incl. data plans, roaming charges or other amounts charged by your wireless carrier) may apply.

3. Subscription to HondaLink™ services is required. HondaLink™-equipped vehicles come with complimentary time-limited trial subscriptions; fees, taxes and other charges will apply in order to continue subscription services upon trial expiry. The availability of certain GPS satellite and/or cellular networks is required for HondaLink™ to operate properly. Service interruptions may occur and/or vehicle system upgrades may be required if cellular network availability is compromised. Some restrictions may apply. For additional HondaLink™ information, please visit www.honda.ca/hondalink and www.honda.ca/privacy.

4. New vehicles are equipped with a complimentary time or data trial period, whichever comes first. After the trial period, contact AT&T or visit att.com/honda to purchase available data plans. 4G LTE connection speeds may vary by region.

5. Map database covers major metropolitan areas in Canada and the 48 contiguous U.S. states.





HONDA SENSING™ TECHNOLOGIES

Has a sixth sense for safety.

The Passport comes standard with Honda Sensing™ technologies. These safety and driver-assistive technologies are designed to help improve the driver's situational awareness, and, in some cases, intervene to help avoid a collision or lessen its severity.

BRAKE

Forward Collision Warning (FCW) system

The FCW system¹ is designed to detect the presence of vehicles in front of you and issue audible, visual and tactile alerts if you're approaching with too much speed. If you fail to respond, CMBS[®] is triggered into operation.



Collision Mitigation Braking System™ (CMBS[®])

To help reduce the likelihood or severity of a frontal impact, CMBS^{®1} is engineered to apply light brake pressure if you don't respond to FCW system alerts. If it still senses an imminent collision, CMBS[®] is designed to brake forcefully.



Lane Departure Warning (LDW) system

The LDW system¹ is designed to monitor vehicle lane position and issue visual and tactile alerts if your vehicle drifts into another detected lane without signaling.



Lane Keeping Assist System (LKAS)

The LKAS¹ is engineered to gently correct your steering if you begin to leave a detected lane without signaling, applying torque progressively to the steering to help guide you back to the centre of the lane.



Road Departure Mitigation (RDM) system

The RDM system¹ is designed to help steer and even apply the brakes if it detects that your vehicle may leave the road.



Adaptive Cruise Control (ACC)

The ACC system¹ is designed to keep a constant speed and set following interval behind a vehicle detected in front of you.

1. None of the features we describe are intended to replace the driver's responsibility to exercise due care while driving. Drivers should not use handheld devices or operate certain vehicle features unless it is safe and legal to do so. Some features have technological limitations. For additional feature information, limitations and restrictions, please visit www.honda.ca/disclaimers and refer to the vehicle's Owner's Manual.



Accessorized Passport Touring in Deep Scarlet Pearl.



Solid on safety.

At Honda, we strive to provide a high level of standard safety features to help ensure the safety of occupants, other drivers and even pedestrians. With this added peace of mind, our drivers have the confidence to enjoy every road to the fullest.

PASSIVE SAFETY

Advanced Compatibility Engineering™ (ACE™) body structure

The highly innovative, next generation Advanced Compatibility Engineering™ (ACE™) body structure is engineered to help disperse frontal impact energy to enhance occupant protection, while more effectively controlling it in severe collisions to help prevent intrusion into the passenger cabin.

Solid frame structure

Like all Honda trucks, the Passport is built with a rigid uni-body frame for added strength, stability and vehicle handling.

Child safety

The Passport features childproof rear door locks as well as rear seat Lower Anchors and Tethers for Children (LATCH), which give you a simple and convenient method to install compatible child safety seats without using the vehicle's seat belt system.

Seat belt safety

The Passport helps prepare you for the unexpected with 3-point height-adjustable front seat belts with an automatic tensioning system, and 3-point rear seat belts in the second row.

HondaLink™ Assist Automatic Emergency Response System

The HondaLink Assist Automatic Emergency Response System^{1,3,4} helps you get the help you need when you need it most. If the airbags deploy, your Display Audio System¹ is engineered to automatically attempt to put you on a call with an operator who will forward your location to first responders if needed. It works with any compatible Bluetooth®-paired phone as long as it has reception, does not require a subscription and gives you peace of mind while you're on the road.

Six standard airbags

The cabin of the Passport contains six standard airbags. It features an advanced front airbag system as well as side curtain airbags with rollover sensors, which are designed to deploy the side curtain airbags in the event of a rollover. Plus, it has SmartVent™ side airbags, which are designed to deploy safely in a manner that mitigates the risk of injury to out-of-position or smaller occupants.

Pedestrian safety

Innovative pedestrian safety features include an energy-absorbing hood and front fenders and breakaway wiper pivots.

ACTIVE SAFETY

Controlled Braking

To assist with safe stopping, the 4-wheel Anti-lock Braking System¹ (ABS) is designed to help you maintain control under hard braking conditions, while Electronic Brake-force Distribution (EBD) helps to optimize braking power based on weight distribution inside the vehicle. In addition, Brake Assist is engineered to help improve braking performance by applying brake pressure when a panic stop is detected.

Vehicle Stability Assist (VSA®) with Traction Control

Vehicle Stability Assist¹ is designed to sense and help correct oversteer and understeer scenarios to enhance handling and cornering stability, while Traction Control is designed to minimize wheel spin when accelerating on loose or slippery surfaces, helping to inspire greater driver confidence.

Hill Start Assist¹

If you take your foot off the brake when stopped on an incline, this feature is engineered to temporarily maintain brake pressure to help prevent your Passport from starting to roll backwards.

Auto high beam¹

The auto high beam feature automatically changes the low beam headlights to high beam headlights in certain circumstances to help improve your vision.

Tire Pressure Monitoring System (TPMS)

To promote enhanced safety and fuel efficiency, the Tire Pressure Monitoring System² continually checks the air pressure in each tire. If pressure drops in any tire, the driver receives a dashboard alert.

1. None of the features we describe are intended to replace the driver's responsibility to exercise due care while driving. Drivers should not use handheld devices or operate certain vehicle features unless it is safe and legal to do so. Some features have technological limitations. For additional feature information, limitations and restrictions, please visit www.honda.ca/disclaimers and refer to the vehicle's Owner's Manual.
2. For optimal tire wear and performance, the pressure should be checked regularly with a tire gauge. Do not rely solely on the monitor system.
3. Only compatible with certain devices and operating systems. Operation may be dependent upon: 1. GPS satellite signal reception and available cellular data and/or voice connection; or 2. connection to vehicle's built-in Wi-Fi hotspot, if applicable. Associated charges (incl. data plans, roaming charges or other amounts charged by your wireless carrier) may apply.
4. Operation requires wireless mobile phone to be paired with the vehicle. Operation is dependent upon cellular data and/or voice connection availability and GPS satellite signal reception.

Colours

EXTERIOR COLOURS



Platinum White Pearl



Crystal Black Pearl



Modern Steel Metallic

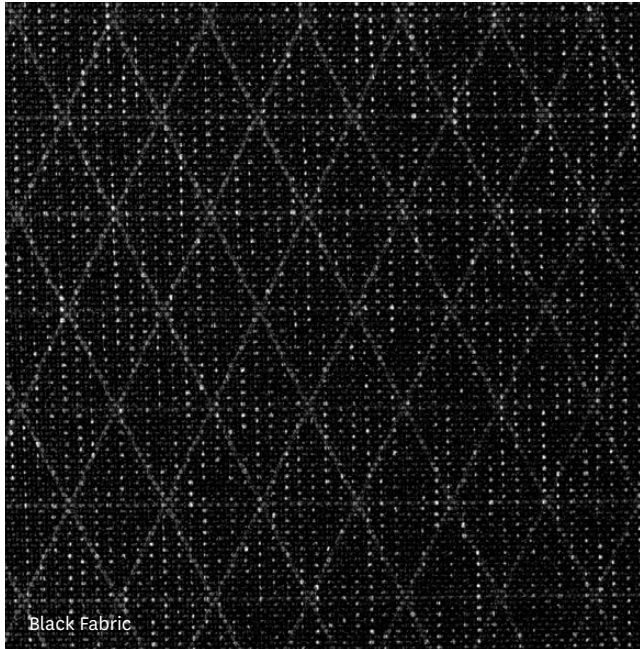


Obsidian Blue Pearl



Deep Scarlet Pearl

INTERIOR COLOURS



Black Fabric



Black Leather

Perception of colour may vary depending on the amount of muddy terrain you’ve driven through.

COLOUR	SPORT	EX- L	TOURING
Platinum White Pearl	Black Fabric	Black Leather	Black Leather
Crystal Black Pearl	Black Fabric	Black Leather	Black Leather
Modern Steel Metallic	Black Fabric	Black Leather	Black Leather
Obsidian Blue Pearl		Black Leather	Black Leather
Deep Scarlet Pearl			Black Leather



Passport Sport in Modern Steel Metallic.

Passport Trims

SPORT	EX-L	HONDA SENSING™ TECHNOLOGIES
<p>KEY FEATURES</p> <ul style="list-style-type: none">• 280 horsepower¹, 3.5-litre, 24-valve, Direct Injection, SOHC, i-VTEC® V6 engine with 262 lb.-ft. of torque¹• 152-watt AM/FM audio system with MP3/Windows Media® Audio playback capability and 7 speakers including subwoofer• 20" aluminum-alloy wheels• 4-wheel Anti-lock Braking System² (ABS)• 9-speed automatic transmission with Grade Logic Control• Advanced front airbag system• Apple CarPlay™^{2,3} / Android Auto™^{2,3}• Auto-dimming rearview mirror• Auto high beam• Driver's seat with 10-way power adjustment including power lumbar support• ECON mode button• Electronic Brake-force Distribution (EBD)• Front wiper de-icer• HandsFreeLink™-bilingual Bluetooth® wireless mobile phone interface^{2,3} with steering-wheel mounted controls• Heated front seats• Heated leather-wrapped steering wheel• Hill Start Assist²• Honda Sensing™ technologies• Honda LaneWatch™ blind spot display²• HondaLink™ Assist Automatic Emergency Response System^{2,3,4}• Intelligent Traction Management System• Intelligent Variable Torque Management (i-VTM4™) AWD system• LED daytime running lights• LED fog lights• LED headlights with auto-on/off (Low beam)• Mirror-integrated LED turn signal indicators• Multi-angle rearview camera² with dynamic guidelines• One-touch power moonroof with tilt feature• Passenger's seat with 4-way manual adjustment• Proximity key entry system with pushbutton start• Rear privacy-tinted glass• Remote engine starter• Roof rails• Sliding and reclining 60/40 split-folding second-row seat• Vehicle Stability Assist² (VSA®) with Traction Control	<p>ADDS TO OR REPLACES SPORT FEATURES:</p> <ul style="list-style-type: none">• Acoustic windshield• Body-coloured front and rear parking sensors• Driver's seat position memory• Heated second-row seats (outboard positions only)• Leather-trimmed seating surfaces• Memory-linked side mirrors with reverse gear tilt-down• Passenger's seat with 4-way power adjustment• Power tailgate	<p>STANDARD ON ALL MODELS</p> <ul style="list-style-type: none">• Forward Collision Warning (FCW) system²• Collision Mitigation Braking System™² (CMBS®)• Lane Departure Warning (LDW) system²• Lane Keeping Assist System (LKAS)²• Road Departure Mitigation (RDM) system²• Adaptive Cruise Control (ACC)²
TOURING	<p>ADDS TO OR REPLACES EX-L FEATURES:</p> <ul style="list-style-type: none">• 550-watt AM/FM Premium audio system with MP3/Windows Media® Audio playback capability and 10 speakers including subwoofer• Ventilated front seats• AT&T Wi-Fi hotspot^{3,5}• Auto-dimming power folding side mirrors• Auto-levelling front headlights• Blind Spot Information² (BSI) system with Rear Cross Traffic Monitor² system• Display Audio System² with Honda Satellite-Linked Navigation System™^{2,6} and bilingual Voice Recognition• HondaLink™^{2,3,7} Subscription Services• LED headlights with auto-on/off (High and low beam)• Power tailgate with hands-free access• Rain-sensing windshield wipers• Wireless charging	



We’re Here. At Honda, assistance and support are always available. The team of trained technicians at your Honda dealership will help keep your vehicle in terrific shape. If you need more information or assistance relating to your warranty, call us at 1-888-9-HONDA-9. For all of the latest Honda information, including product specifications, pricing, photos and more, visit honda.ca. It has everything you need to “design” your Honda and personalize it with items from a list of quality accessories.

We’re Ready to Help. When you purchase a new Honda, you automatically receive Honda Plus Roadside Assistance. This service is available to you, or any authorized driver, 24 hours a day, 7 days a week, anywhere in Canada or the United States (including the lower 48 states, the District of Columbia, Alaska, Hawaii, and Puerto Rico). Coverage is for 3 years over an unlimited distance and includes a 24-hour toll-free Honda Plus Roadside Assistance number, mechanical breakdown towing, emergency roadside service and many other helpful features. Ask your dealer for more information.

Honda Plus Extended Warranty. Experience added protection with Honda Plus coverage that is behind you for the road ahead. With available coverage options of up to 8 years/200,000 km, you can choose the one that best suits your needs. With a plan this wide-ranging, the only thing that’s uncertain is where it will take you.

Honda Financial Services. Whether you buy or lease a Honda, Honda Financial Services can assist you with the process. Ask your dealer which lease or purchase plan best suits your needs.

New Honda Vehicle Warranty. The Honda warranty protection makes Power Train components a minor concern with the Honda 5-year/100,000-km No Nonsense Warranty. In addition to the Honda 5-year/100,000-km No Nonsense Warranty, you and your new Honda are protected by a Honda 3-year/60,000-km Distributor’s Warranty as well as an additional series of warranties for such items as emission controls, body corrosion and more.

Genuine Honda Accessories give you the opportunity to fine-tune your new Honda just how you like it. Whether you want to turn up the style, the versatility or the exclusivity, every accessory is designed and built to adhere to the strictest Honda standards. See your dealer for full details.

Genuine Honda Replacement Parts are made to the same exacting standards as original Honda components and are guaranteed by the Genuine Honda Parts Warranty. Using Genuine Honda Parts will help to maintain the quality, reliability and performance of your vehicle.

1. Horsepower and torque calculations reflect SAE net, Rev. 08/04, SAE J1349 procedures.
2. None of the features we describe are intended to replace the driver’s responsibility to exercise due care while driving. Drivers should not use handheld devices or operate certain vehicle features unless it is safe and legal to do so. Some features have technological limitations. For additional feature information, limitations and restrictions, please visit www.honda.ca/disclaimers and refer to the vehicle’s Owner’s Manual.
3. Only compatible with certain devices and operating systems. Operation may be dependent upon: 1. GPS satellite signal reception and available cellular data and/or voice connection; or 2. connection to vehicle’s built-in Wi-Fi hotspot, if applicable. Associated charges (incl. data plans, roaming charges or other amounts charged by your wireless carrier) may apply.
4. Operation requires wireless mobile phone to be paired with the vehicle. Operation is dependent upon cellular data and/or voice connection availability and GPS satellite signal reception.
5. New vehicles are equipped with a complimentary time or data trial period, whichever comes first. After the trial period, contact AT&T or visit att.com/honda to purchase available data plans. 4G LTE connection speeds may vary by region.
6. Map database covers major metropolitan areas in Canada and the 48 contiguous U.S. states.
7. Subscription to HondaLink™ services is required. HondaLink™-equipped vehicles come with complimentary time-limited trial subscriptions; fees, taxes and other charges will apply in order to continue subscription services upon trial expiry. The availability of certain GPS satellite and/or cellular networks is required for HondaLink™ to operate properly. Service interruptions may occur and/or vehicle system upgrades may be required if cellular network availability is compromised. Some restrictions may apply. For additional HondaLink™ information, please visit www.honda.ca/hondalink and www.honda.ca/privacy.

Always use seat belts and appropriate child seats. Children 12 and under are safest when properly restrained in a rear seat. Properly secure all items stored in cargo areas. Always read the vehicle owner’s manual for detailed vehicle operation and feature information.

Honda reserves the right to terminate or change any of the services and/or features listed in this brochure at any time, for any reason. Some features require registration. Certain features may transmit to Honda and/or other service providers a vehicle’s location, operating conditions or other information that may be tied to the vehicle identification number (VIN) and can be combined to track a vehicle. For Honda’s data use and Privacy Policies, see www.honda.ca/privacy. Specifications, features, illustrations and equipment shown in this brochure are based upon the latest available information at the time of publication. Although descriptions are believed to be correct, accuracy cannot be guaranteed. Honda reserves the right to make changes at any time, without notice or obligation, in colours, specifications, accessories, materials, models and trim availability. Some vehicles may be shown with optional equipment. Some vehicles shown may be U.S. models. Canadian specifications may vary. For Android Auto™ data use and privacy policy, see Terms and Privacy Policy for Android Auto™ app or contact Google Inc. at www.google.com. Android Auto is a trademark of Google Inc. For Apple CarPlay™ data use and privacy policy, see Terms and Privacy Policy for Apple CarPlay™ or contact Apple Inc. at www.apple.com. Apple CarPlay, Siri and iPhone are trademarks of Apple Inc., registered in the U.S. and other countries. Bluetooth is a registered trademark of SIG Inc. Blu-ray is a trademark of Blu-ray Disc Association. HomeLink and HandsFreeLink are registered trademarks or trademarks of Johnson Controls Technology. HD Radio™ is a proprietary trademark of iBiquity Digital Corp. HDMI is a registered trademark of HDMI Licensing LLC. Windows Media is a registered trademark of Microsoft Corporation. LEED® is a registered trademark of the U.S. Green Building Council, licensed to the Canada Green Building Council for use in Canada. © 2019 Sirius XM Canada Inc. “SiriusXM”, the SiriusXM logo, channel names and logos are trademarks of SiriusXM Radio Inc. and are used under licence. Honda and all other marks used herein are trademarks or registered trademarks of Honda Motor Co., Ltd. Honda Canada Inc., 180 Honda Boulevard, Markham, ON, Canada L6C 0H9. 1-888-9-HONDA-9. www.honda.ca.

Here’s to the dreamers.

The Power of Dreams

At Honda, The Power of Dreams drives us to create intelligent products that enhance mobility and increase the joy in people’s lives. It is the mindset that guides us to help move people forward and protect the future we all share.

How do we do it? We never stop dreaming. In the 70s, we were the first automaker in the industry to voluntarily adhere to emissions standards. Now, we’re advancing robotics and aviation, harnessing solar power and releasing a car that emits only water.

Through it all, our goal never changes: create a safer, smarter world in which people experience the joy of mobility.

The Honda Canada Foundation

The Honda Canada Foundation enables the realization of dreams by supporting people and organizations across the country that focus on four pillars: Family, Education, Environment and Engineering. Since 2005, more than 5.5 million Canadians have benefited from charitable programs funded by the Honda Canada Foundation.

Blue Skies for Our Children

We believe everything we do must exist in harmony with nature. That’s where “Blue Skies for Our Children” was born. It’s more than a mantra – it’s an environmental pledge to the Earth and our future generations. And we’re practicing what we preach.

Leading the LEED® certifications

Our sales offices also strive for environmental efficiencies. Honda’s LEED® (Leadership in Energy and Environmental Design) Gold Certified Head Office campus in Markham, Ontario, includes green features such as a storm water management system, heat-reflective materials on the roof and bio swales for natural filtration. The facility uses 89 percent less litres of water per square foot and 38 percent less kilowatt hours of energy annually than the average office facility.

Zero Waste-to-Landfill

We don’t waste time. Or anything else for that matter. Our goal is to increase our recycling efforts, reduce overall waste and divert materials from landfill sites. In fact, last year we sent less than one percent of waste to landfills from our office and parts distribution facilities combined.

One Honda. One Tree.

We’re pretty obsessed with fresh air. For every lawn and garden or ATV product sold between April 1 and July 31 annually, the Honda Canada Foundation plants one tree. In the last 12 years, we’ve helped plant more than 160,000 trees in Canada.

Environmental Vehicles & Technology

Blending style, efficiency and a serious amount of thrill, the Accord Hybrid makes environmental responsibility feel almost rebellious. Combining a lithium-ion battery with a 2.0-litre engine, this Hybrid lets you go more and stop less on the way. The Honda Insight exemplifies hybrid efficiency, powered by a 1.5-litre Atkinson Cycle engine, electric motor and lithium-ion battery. And the future looks brighter with Honda advancing Fuel Cell technology that emits zero emissions.

Honda Clarity Plug-in Hybrid

Whoever said an eco-conscience came with compromise was sorely mistaken. This advanced plug-in hybrid vehicle lets you tap into electric power alongside the gas engine to create extra efficiency.

For more information, visit hondacanada.ca



HondaJet



Motorcycles



Side By Side



ASIMO



Honda Campus



Marine



Power Equipment



ATVs



Blue Skies for Our Children

