

2020
CR-V



Hitting the town or hitting the slopes, why just be a jack-of-all trades, when you can be a master of them, too? When you do it all, it helps to have a car that does as well.

Overview 04	Technology 15
Exterior 05	Honda Sensing™ Technologies 17
Interior 08	Safety 20
Sport 09	Colours 21
Black Edition 10	Trims 23
Versatility 11	Warranty 24
Performance & Efficiency 14	The Power of Dreams 25





CR-V Touring in Radiant Red Metallic.



OVERVIEW

Form, function, fun.

The 2020 CR-V blends practicality with an inner desire for pure driving bliss. The result is a showstopping package of form and function. We've taken a sporty look and personality and jam-packed it with tons of innovative technology and features. The fun-to-drive handling of the CR-V has always made it feel almost more car than SUV, and having a turbocharged engine in the mix should guarantee that drivers can always be on the edge of their seats. If the way we've fallen in love is any indication, the 2020 CR-V is going to be a runaway hit.

Key features: Apple CarPlay^{TM1,2} / Android Auto^{TM1,2} Honda SensingTM Technologies, remote engine start, available heated leather-wrapped steering wheel, available Canadian-exclusive panoramic moonroof

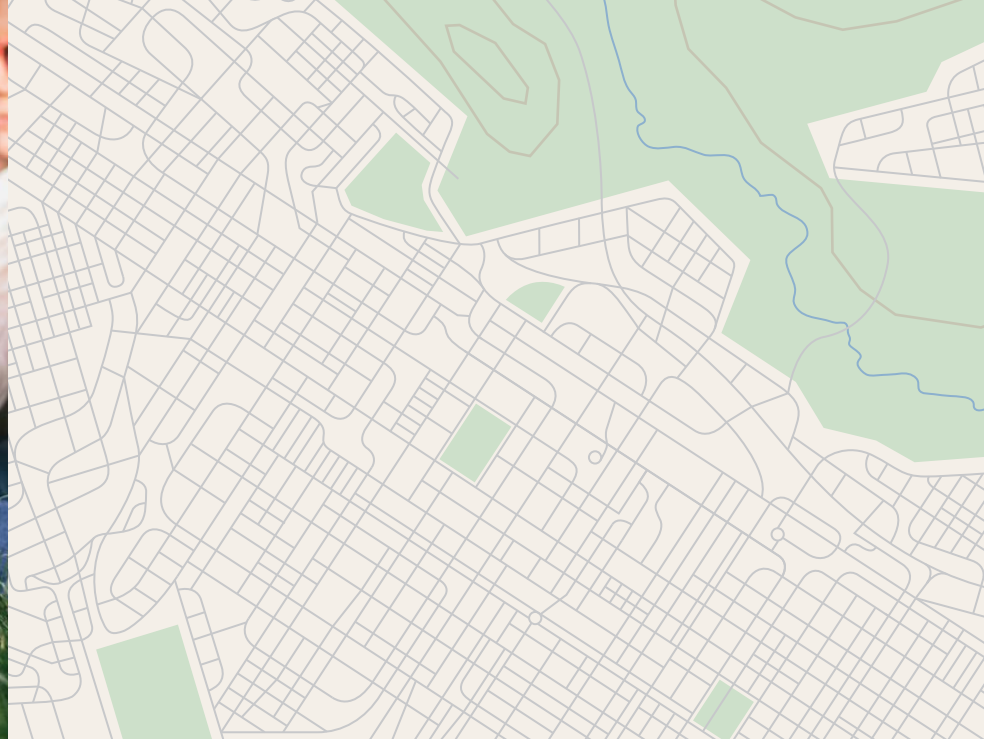
1. None of the features we describe are intended to replace the driver's responsibility to exercise due care while driving. Drivers should not use handheld devices or operate certain vehicle features unless it is safe and legal to do so. Some features have technological limitations. For additional feature information, limitations and restrictions, please visit www.honda.ca/disclaimers and refer to the vehicle's Owner's Manual.
2. Only compatible with certain devices and operating systems. Operation may be dependent upon: 1. GPS satellite signal reception and available cellular data and/or voice connection; or 2. connection to vehicle's built-in Wi-Fi hotspot, if applicable. Associated charges (incl. data plans, roaming charges or other amounts charged by your wireless carrier) may apply.

EXTERIOR

Make a spectacle of yourself.

If the CR-V was on the runway, it would steal the show. And not just because of its bold, aggressive looks. Or its beefed-up athletic stance. Or even the available LED headlights with auto-on/off or the available LED fog lights that help ensure it is seen in the best light. There’s actually a lot of substance to back up the arresting looks of the 2020 CR-V. Thoughtful touches like a Canadian-exclusive available panoramic moonroof. Available roof rails for more packing versatility. Attractive available 19" aluminum-alloy wheels to ensure you’re outfitted from top to bottom. And a real inner power, thanks to the powerful turbo engine. So many people are out there searching for the total package. And with the 2020 CR-V, they can actually get it.

Key Features: Available power tailgate with programmable height and available hands-free access, available one-touch power moonroof with tilt feature, available auto high beam



CR-V Touring in Obsidian Blue Pearl and Modern Steel Metallic.



INTERIOR

Get into your zone.

Strong on the outside, luxurious on the inside, the 2020 CR-V is the total package. Standard features like a proximity key entry system with pushbutton start and remote engine starter help to ensure the CR-V is ready to go before you are. Once you're inside, the dual-zone automatic climate control with air-filtration system, available perforated leather-trimmed seating surfaces and available heated leather-wrapped steering wheel create a tailored, luxurious environment no matter the road or the weather. And if the weather does act up, available rain-sensing windshield wipers will help tame whatever the environment throws at you.

Key Features: Multi-angle rearview camera¹ with dynamic guidelines, heated front seats and available heated rear seats (outboard positions only), easy fold-down 60/40 split rear seatback, flat luggage compartment with two-level mode

1. None of the features we describe are intended to replace the driver's responsibility to exercise due care while driving. Drivers should not use handheld devices or operate certain vehicle features unless it is safe and legal to do so. Some features have technological limitations. For additional feature information, limitations and restrictions, please visit www.honda.ca/disclaimers and refer to the vehicle's Owner's Manual.



SPORT

A good Sport.

With the Canadian-exclusive available Sport trim, the Honda CR-V is ready, willing and able to get you on the road like never before. Featuring 19" Shark Grey aluminum-alloy wheels, roof rails, and a power tailgate with programmable height, the 2020 CR-V Sport is designed to take you where you're going for work, play and everything in between. With sport pedals, a heated leather-wrapped steering wheel and leather shift knob, you won't just feel the power between you and the road. You'll command it.



CR-V Black Edition in Crystal Black Pearl.



CR-V Sport in Modern Steel Metallic.



CR-V Sport in Modern Steel Metallic.

BLACK EDITION

Back in black.

The Black Edition Honda CR-V brings a new meaning to the word sleek. Catch eyes with unique black-machined 19" aluminum-alloy wheels, a black trivalent chromium grille, and rear Black Edition badge, all designed to provoke equal amounts of shock and awe. The Piano Black interior and black woodgrain instrument panel make for a cabin steeped in luxury, elevating your driving experience while outwardly projecting confidence with a healthy dash of mystique.



VERSATILITY

Flat-out awesome.

When you're packing your bags for those long summer road trips, never feel the need to pack light. The easy fold-down 60/40 split rear seatback means virtually no luggage is too long or too wide to take along for the drive.

Plus, the luggage compartment has two level modes – full flat mode and capacity max mode – that are designed to help ensure that cargo of almost all shapes and sizes gets where it's going and gets there all in one piece.

Whether you're a thrift-store enthusiast bringing home a flea market find, or a trail warrior loading up your bike and hitting the backwoods before work, the 2020 CR-V has room for most of your favourite activities.





CR-V Touring in Radiant Red Metallic.

PERFORMANCE & EFFICIENCY

Lead the turbocharge.

The 2020 CR-V doesn't hold back on performance. The 1.5-litre, 16-valve, Direct Injection, DOHC, turbocharged 4-cylinder engine provides the CR-V with 190 horsepower¹ and 179 lb.-ft of torque, while the continuously variable transmission (CVT) keeps it all working smoothly. It harnesses that power using the traction of available Real Time AWD™ with Intelligent Control System™ to give you a more stable and confident drive, no matter the road.

Key Features: Continuously variable transmission (CVT), turbocharged 4-cylinder engine, available Real Time AWD™ with Intelligent Control System™

1. Horsepower and torque calculations reflect SAE net, Rev. 08/04, SAE J1349 procedures.



TECHNOLOGY

Hello, hi-tech.

Tech leads the way in the 2020 CR-V. It boasts features such as the Display Audio System¹ with Apple Carplay™^{1,2} / Android Auto™^{1,2} to make sure your hands stay on the wheel, and the available Honda Satellite-Linked Navigation System™^{1,3} with bilingual Voice Recognition so your eyes stay on the road. While you're driving, the available Honda LaneWatch™ blind spot display¹ (replaced by the Blind Spot Information (BSI) system¹ with Rear Cross Traffic Monitor¹ system on the Touring and Black Edition trims) acts like an extra set of eyes. And when you finally arrive, available wireless charging capability and two available rear USB ports² help to ensure everyone's devices are fully charged and ready to go.

Key Features: Available Display Audio³ system with Apple Carplay™^{1,2}/Android Auto™^{1,2} available Honda Satellite-Linked Navigation System™^{1,3} with bilingual Voice Recognition, available Honda LaneWatch™ blind spot display¹/ Blind Spot Information (BSI) system¹ with Rear Cross Traffic Monitor¹ system, available rear charging USB ports²

1. Available wireless charging

2. Apple CarPlay™^{1,2} / Android Auto™^{1,2}

3. 7" Display Audio System³ with available Honda Satellite-Linked Navigation System™^{1,3} and bilingual Voice Recognition

4. Available Honda LaneWatch™ blind spot display¹

5. Multi-angle rearview camera¹ with dynamic guidelines

6. Available rear USB ports²

7. Remote engine start



1. None of the features we describe are intended to replace the driver's responsibility to exercise due care while driving. Drivers should not use handheld devices or operate certain vehicle features unless it is safe and legal to do so. Some features have technological limitations. For additional feature information, limitations and restrictions, please visit www.honda.ca/disclaimers and refer to the vehicle's Owner's Manual.

2. Only compatible with certain devices and operating systems. Operation may be dependent upon: 1. GPS satellite signal reception and available cellular data and/or voice connection; or 2. connection to vehicle's built-in Wi-Fi hotspot, if applicable. Associated charges (incl. data plans, roaming charges or other amounts charged by your wireless carrier) may apply.

3. Map database covers major metropolitan areas in Canada and the 48 contiguous U.S. states.

Has a sixth sense for safety.

Honda Sensing™ technologies are designed to help make your drive safer. With intuitive technology and design, we've created a way forward that we can all feel good about. Whether you're driving or sitting in the passenger seat, feel confident in the latest in safety and innovation from Honda.

BRAKE

Forward Collision Warning (FCW) system

The FCW system¹ is designed to detect the presence of vehicles in front of you and issue audible, visual and tactile alerts if you're approaching with too much speed. If you fail to respond, CMBS[®] is triggered into operation.



Collision Mitigation Braking System™ (CMBS[®])

To help reduce the likelihood or severity of a frontal impact, CMBS^{®1} is engineered to apply light brake pressure if you don't respond to FCW system alerts. If it still senses an imminent collision, CMBS[®] is designed to brake forcefully.



Lane Departure Warning (LDW) system

The LDW system¹ is designed to monitor vehicle lane position and issue visual and tactile alerts if your vehicle drifts into another detected lane without signaling.



Lane Keeping Assist System (LKAS)

The LKAS¹ is engineered to gently correct your steering if you begin to leave a detected lane without signaling, applying torque progressively to the steering to help guide you back to the centre of the lane.



Road Departure Mitigation (RDM) system

The RDM system¹ is designed to help steer and even apply brake pressure if it detects that your vehicle may leave the road.



Adaptive Cruise Control (ACC) with Low-Speed Follow

The ACC system¹ is designed to keep a constant speed and set following interval behind the vehicle detected in front of you, including an ability to slow, stop and accelerate with the flow of traffic.

1. None of the features we describe are intended to replace the driver's responsibility to exercise due care while driving. Drivers should not use handheld devices or operate certain vehicle features unless it is safe and legal to do so. Some features have technological limitations. For additional feature information, limitations and restrictions, please visit www.honda.ca/disclaimers and refer to the vehicle's Owner's Manual.





Solid on safety.

At Honda, we strive to provide a high level of standard safety features to help ensure the safety of occupants, other drivers and even pedestrians. This added peace of mind helps our drivers maintain the confidence to enjoy every road to the fullest.

PASSIVE SAFETY

Advanced Compatibility Engineering™ (ACE™) body structure

The highly innovative, next generation Advanced Compatibility Engineering™ (ACE™) body structure is engineered to help disperse frontal impact energy to enhance occupant protection, while more effectively controlling it in severe collisions, to help prevent intrusion into the passenger cabin.

Six standard airbags

The cabin of the CR-V contains six standard airbags. It features an i-SRS front airbag system as well as side curtain airbags with a rollover sensor system designed to deploy if a rollover is detected. Plus, it has SmartVent™ side airbags, which are designed to deploy in a manner that mitigates the risk of injury to out-of-position or smaller occupants.

Seat belt safety

The CR-V helps prepare you for the unexpected with 3-point height-adjustable front seat belts with an automatic tensioning system and 3-point rear seat belts.

HondaLink™ Assist Automatic Emergency Response System

The HondaLink Assist Automatic Emergency Response System^{1,3,4} helps you get the help you need when you need it most. If the airbags deploy, your Display Audio System¹ is engineered to automatically attempt to put you on a call with an operator who will forward your location to first responders if needed. It works with any compatible Bluetooth®-paired phone as long as it has reception, does not require a subscription and gives you peace of mind while you're on the road.

Child safety

The CR-V features childproof rear door locks, as well as rear seat Lower Anchors and Tethers for Children (LATCH), which give you a simple and convenient method to install compatible child safety seats without using the vehicle's seat belt system.

Pedestrian safety

Innovative pedestrian safety features include an energy-absorbing hood and front fenders and deformable wiper pivots.

ACTIVE SAFETY

Controlled Braking

To assist with safe stopping, the 4-wheel Anti-lock Braking System¹ (ABS) is designed to help you maintain control under hard braking conditions, while Electronic Brake-force Distribution (EBD) helps to optimize braking power based on weight distribution inside the vehicle. In addition, Brake Assist is engineered to help improve braking performance by applying full brake pressure when a panic stop is detected.

Vehicle Stability Assist (VSA®) with Traction Control

Vehicle Stability Assist¹ is designed to sense and help correct oversteer and understeer scenarios to enhance handling and cornering stability, while Traction Control is designed to minimize wheel spin when accelerating on loose or slippery surfaces, helping to inspire greater driver confidence.

Tire Pressure Monitoring System (TPMS)

To promote enhanced safety and fuel efficiency, the Tire Pressure Monitoring System² continually checks the air pressure in each tire. If pressure drops in any tire, the driver receives a dashboard alert.

Hill Start Assist¹

If you take your foot off the brake when stopped on an incline, this feature is engineered to temporarily maintain brake pressure to help prevent your CR-V from starting to roll backwards.

Auto high beam

The auto high beam feature automatically changes the low beam headlights to high beam headlights in certain circumstances to help improve your vision.

1. None of the features we describe are intended to replace the driver's responsibility to exercise due care while driving. Drivers should not use handheld devices or operate certain vehicle features unless it is safe and legal to do so. Some features have technological limitations. For additional feature information, limitations and restrictions, please visit www.honda.ca/disclaimers and refer to the vehicle's Owner's Manual.
2. For optimal tire wear and performance, the pressure should be checked regularly with a tire gauge. Do not rely solely on the monitor system.
3. Only compatible with certain devices and operating systems. Operation may be dependent upon: 1. GPS satellite signal reception and available cellular data and/or voice connection; or 2. connection to vehicle's built-in Wi-Fi hotspot, if applicable. Associated charges (incl. data plans, roaming charges or other amounts charged by your wireless carrier) may apply.
4. Operation requires wireless mobile phone to be paired with the vehicle. Operation is dependent upon cellular data and/or voice connection availability and GPS satellite signal reception.

Colours

EXTERIOR COLOURS



Platinum White Pearl



Crystal Black Pearl



Modern Steel Metallic



Lunar Silver Metallic



Radiant Red Metallic

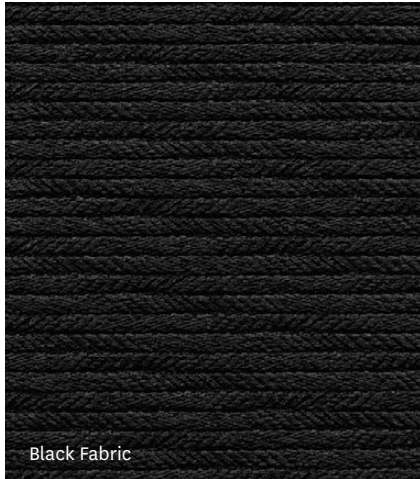


Obsidian Blue Pearl

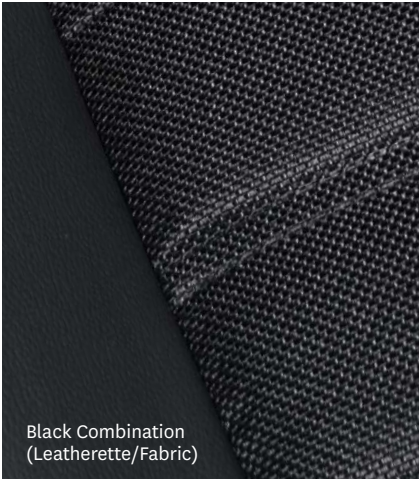


Sonic Grey Pearl

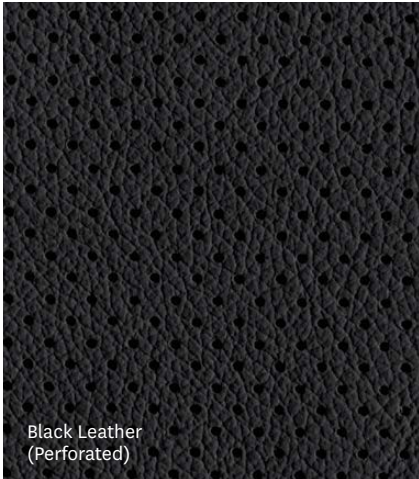
INTERIOR COLOURS



Black Fabric



Black Combination
(Leatherette/Fabric)



Black Leather
(Perforated)

Perception of colour may vary when combined with blazing sun and high speeds.

COLOUR	LX	SPORT	EX-L	TOURING	BLACK EDITION
Platinum White Pearl	Black Fabric	Black Combination (Leatherette/Fabric)	Black Leather (Perforated)	Black Leather (Perforated)	Black Leather (Perforated) Black Edition
Crystal Black Pearl	Black Fabric	Black Combination (Leatherette/Fabric)	Black Leather (Perforated)		Black Leather (Perforated) Black Edition
Modern Steel Metallic	Black Fabric	Black Combination (Leatherette/Fabric)	Black Leather (Perforated)	Black Leather (Perforated)	
Lunar Silver Metallic		Black Combination (Leatherette/Fabric)	Black Leather (Perforated)	Black Leather (Perforated)	
Radiant Red Metallic		Black Combination (Leatherette/Fabric)	Black Leather (Perforated)	Black Leather (Perforated)	
Obsidian Blue Pearl			Black Leather (Perforated)	Black Leather (Perforated)	
Sonic Grey Pearl		Black Combination (Leatherette/Fabric)	Black Leather (Perforated)	Black Leather (Perforated)	



CR-V Touring in Obsidian Blue Pearl.

CR-V Trims

LX 2WD

KEY FEATURES

- 190 horsepower¹ 1.5 litre, 16-valve, Direct Injection, DOHC, turbocharged 4-cylinder engine
- 160-watt AM/FM audio system with MP3/Windows Media® Audio playback capability and 4 speakers
- 17" aluminum-alloy wheels
- Adjustable cargo floor height
- Auto high beam
- Apple Car Play™^{2,3} / Android Auto™^{2,3}
- Continuously variable transmission (CVT)
- 7" Display Audio System² with HondaLink™^{2,3} Next Generation
- Easy fold-down 60/40 split rear seatback
- ECON mode button
- Front wiper de-icer
- HandsFreeLink™ -bilingual Bluetooth® wireless mobile phone interface^{2,3}
- Heated front seats
- Hill Start Assist²
- HondaLink™ Assist Automatic Emergency Response System^{2,3,4}
- Honda Sensing™ Technologies
- Idle-stop
- i-SRS airbag system (front)
- LED daytime running lights
- Multi-angle rearview camera² with dynamic guidelines
- Projector-beam halogen headlights with auto on/off
- Proximity key entry system with pushbutton start
- Rear privacy-tinted glass
- Remote engine start
- Two ports: 1.0 & 1.5-amp front USB charging ports²
- 4-wheel Anti-lock Braking System² (ABS)
- Electronic Parking Brake (EPB) with automatic brake hold
- Electronic Brake-force Distribution (EBD)
- Vehicle Stability Assist² (VSA®) with Traction Control

LX

ADDS TO OR REPLACES LX 2WD FEATURES

- Real Time AWD™ with Intelligent Control System™

SPORT

ADDS TO OR REPLACES LX FEATURES

- 180-watt AM/FM audio system with MP3/Windows Media® Audio playback capability and 6 speakers
- 19" aluminum-alloy wheels, shark grey
- Body-coloured heated power door mirrors with integrated turn signal indicators
- Driver's seat with 12-way power adjustment including power lumbar support
- Dual exhaust with chrome finisher
- Front passenger's seatback pocket
- HD Radio™⁵
- Heated leather-wrapped steering wheel
- HomeLink® remote system⁶
- Honda LaneWatch™ blind spot display²
- Leatherette/fabric combination seats
- Leather-wrapped shift knob
- LED fog lights, round
- One-touch power moonroof with tilt feature
- Power tailgate with programmable height
- Retractable cargo cover
- Roof rails
- Sport pedals
- Two ports: 2.5-amp USB charging ports in 2nd row²
- Variable intermittent windshield wipers

EX-L

ADDS TO OR REPLACES SPORT FEATURES

- 180-watt AM/FM audio system with MP3/Windows Media® Audio playback capability and 8 speakers
- 18" aluminum-alloy wheels
- Auto-dimming rearview mirror
- Driver's seat position memory
- Heated rear seats (outboard positions only)
- Perforated leather-trimmed seating surfaces
- SiriusXM™^{2,7}

TOURING

ADDS TO OR REPLACES EX-L FEATURES

- 7-inch Display Audio System² with Honda Satellite-Linked Navigation System™^{2,8} and bilingual Voice Recognition
- 331-watt AM/FM Premium audio system with MP3/Windows Media® Audio playback capability and 9 speakers including subwoofer
- 19" aluminum-alloy wheels
- Ambient lighting (front door handles)
- Blind Spot Information (BSI) system² with Rear Cross Traffic Monitor system
- Hands-free access power tailgate with programmable height
- LED fog lights, 5-LED
- LED headlights (High and low beam) with auto on/off
- Panoramic moonroof
- Rain-sensing windshield wipers
- Wireless charging

BLACK EDITION

ADDS TO OR REPLACES TOURING FEATURES

- 19" aluminum-alloy wheels, Black Edition
- Floor mats, Black Edition
- Instrument panel trim finish, black woodgrain
- Perforated leather-trimmed seating surfaces, Black Edition

HONDA SENSING™ TECHNOLOGIES

STANDARD ON ALL MODELS

- Collision Mitigation Braking System™² (CMBS®)
- Forward Collision Warning (FCW) system²
- Lane Departure Warning (LDW) system²
- Road Departure Mitigation (RDM) system²
- Adaptive Cruise Control (ACC)² with Low-Speed Follow
- Lane Keeping Assist System (LKAS)²



We’re Here. At Honda, assistance and support are always available. The team of trained technicians at your Honda dealership will help keep your vehicle in terrific shape. If you need more information or assistance relating to your warranty, call us at 1-888-9-HONDA-9. For all of the latest Honda information, including product specifications, pricing, photos and more, visit honda.ca. It has everything you need to “design” your Honda and personalize it with items from a list of quality accessories.

We’re Ready to Help. When you purchase a new Honda, you automatically receive Honda Plus Roadside Assistance. This service is available to you, or any authorized driver, 24 hours a day, 7 days a week, anywhere in Canada or the United States (including the lower 48 states, the District of Columbia, Alaska, Hawaii, and Puerto Rico). Coverage is for 3 years over an unlimited distance and includes a 24-hour toll-free Honda Plus Roadside Assistance number, mechanical breakdown towing, emergency roadside service and many other helpful features. Ask your dealer for more information.

Honda Plus Extended Warranty. Experience added protection with Honda Plus coverage that is behind you for the road ahead. With available coverage options of up to 8 years/200,000 km, you can choose the one that best suits your needs. With a plan this wide-ranging, the only thing that’s uncertain is where it will take you.

Honda Financial Services. Whether you buy or lease a Honda, Honda Financial Services can assist you with the process. Ask your dealer which lease or purchase plan best suits your needs.

New Honda Vehicle Warranty. The Honda warranty protection makes Power Train components a minor concern with the Honda 5-year/100,000-km No Nonsense Warranty. In addition to the Honda 5-year/100,000-km No Nonsense Warranty, you and your new Honda are protected by a Honda 3-year/60,000-km Distributor’s Warranty as well as an additional series of warranties for such items as emission controls, body corrosion and more.

Genuine Honda Accessories give you the opportunity to fine-tune your new Honda just how you like it. Whether you want to turn up the style, the versatility or the exclusivity, every accessory is designed and built to adhere to the strictest Honda standards. See your dealer for full details.

Genuine Honda Replacement Parts are made to the same exacting standards as original Honda components and are guaranteed by the Genuine Honda Parts Warranty. Using Genuine Honda Parts will help to maintain the quality, reliability and performance of your vehicle.

1. Horsepower and torque calculations reflect SAE net, Rev. 08/04, SAE J1349 procedures.
2. None of the features we describe are intended to replace the driver’s responsibility to exercise due care while driving. Drivers should not use handheld devices or operate certain vehicle features unless it is safe and legal to do so. Some features have technological limitations. For additional feature information, limitations and restrictions, please visit www.honda.ca/disclaimers and refer to the vehicle’s Owner’s Manual.
3. Only compatible with certain devices and operating systems. Operation may be dependent upon: 1. GPS satellite signal reception and available cellular data and/or voice connection; or 2. connection to vehicle’s built-in Wi-Fi hotspot, if applicable. Associated charges (incl. data plans, roaming charges or other amounts charged by your wireless carrier) may apply.
4. Operation requires wireless mobile phone to be paired with the vehicle. Operation is dependent upon cellular data and/or voice connection availability and GPS satellite signal reception.
5. Coverage varies by market.
6. HomeLink® can be programmed with codes of up to three remote-control devices (e.g., garage-door opener, home security system, etc.).
7. Only available in certain areas. Includes a no-charge trial of three months.
8. Map database covers major metropolitan areas in Canada and 48 contiguous U.S. states.

Here’s to the dreamers.

The Power of Dreams

At Honda, The Power of Dreams drives us to create intelligent products that enhance mobility and increase the joy in people’s lives. It is the mindset that guides us to help move people forward and protect the future we all share.

How do we do it? We never stop dreaming. In the 70s, we were the first automaker in the industry to voluntarily adhere to emissions standards. Now, we’re advancing robotics and aviation, harnessing solar power and releasing a car that emits only water.

Through it all, our goal never changes: create a safer, smarter world in which people experience the joy of mobility.

The Honda Canada Foundation

The Honda Canada Foundation enables the realization of dreams by supporting people and organizations across the country that focus on four pillars: Family, Education, Environment and Engineering. Since 2005, more than 5.5 million Canadians have benefited from charitable programs funded by the Honda Canada Foundation.

Blue Skies for Our Children

We believe everything we do must exist in harmony with nature. That’s where “Blue Skies for Our Children” was born. It’s more than a mantra – it’s an environmental pledge to the Earth and our future generations. And we’re practicing what we preach.

Leading the LEED® certifications

Our sales offices also strive for environmental efficiencies. Honda’s LEED® (Leadership in Energy and Environmental Design) Gold Certified Head Office campus in Markham, Ontario, includes green features such as a storm water management system, heat-reflective materials on the roof and bio swales for natural filtration. The facility uses 89 percent less litres of water per square foot and 38 percent less kilowatt hours of energy annually than the average office facility.

Zero Waste-to-Landfill

We don’t waste time. Or anything else for that matter. Our goal is to increase our recycling efforts, reduce overall waste and divert materials from landfill sites. In fact, last year we sent less than one percent of waste to landfills from our office and parts distribution facilities combined.

One Honda. One Tree.

We’re pretty obsessed with fresh air. For every lawn and garden or ATV product sold between April 1 and July 31 annually, the Honda Canada Foundation plants one tree. In the last 12 years, we’ve helped plant more than 160,000 trees in Canada.

Environmental Vehicles & Technology

Blending style, efficiency and a serious amount of thrill, the Accord Hybrid makes environmental responsibility feel almost rebellious. Combining a lithium-ion battery with a 2.0-litre engine, this Hybrid lets you go more and stop less on the way. The Honda Insight exemplifies hybrid efficiency, powered by a 1.5-litre Atkinson Cycle engine, electric motor and lithium-ion battery. And the future looks brighter with Honda advancing Fuel Cell technology that emits zero emissions.

Honda Clarity Plug-in Hybrid

Whoever said an eco-conscience came with compromise was sorely mistaken. This advanced plug-in hybrid vehicle lets you tap into electric power alongside the gas engine to create extra efficiency.

For more information, visit hondacanada.ca



HondaJet



Motorcycles



Side By Side



ASIMO



Honda Campus



Marine



Power Equipment



ATVs



Blue Skies for Our Children

