

2 0 0 3

H O N D A

PILOT





**DO ANYTHING  
GO ANYWHERE**

Climb that mountain.  
Tow that boat. Take your family  
or friends on a vacation they will  
never forget. In the rugged  
all-new 2003 Honda Pilot, life is  
one big adventure. Adapt it to  
whatever you want, whenever  
you want. Versatility and fun to  
drive is what the Pilot is all about.  
Do everything you've ever  
dreamed about doing because  
you rule the road. Load it up  
and take everyone on a leisurely  
drive or head off the beaten  
track. Anything is possible  
because Honda's unique new  
SUV entry features the car-like  
handling found in every Honda.  
Drivers will find navigating  
the Pilot a very rewarding  
experience. So go ahead,  
take charge of your ultimate  
family adventure vehicle and  
start living life large.

pilot







PILOT EX-L SHOWN IN STARLIGHT SILVER METALLIC





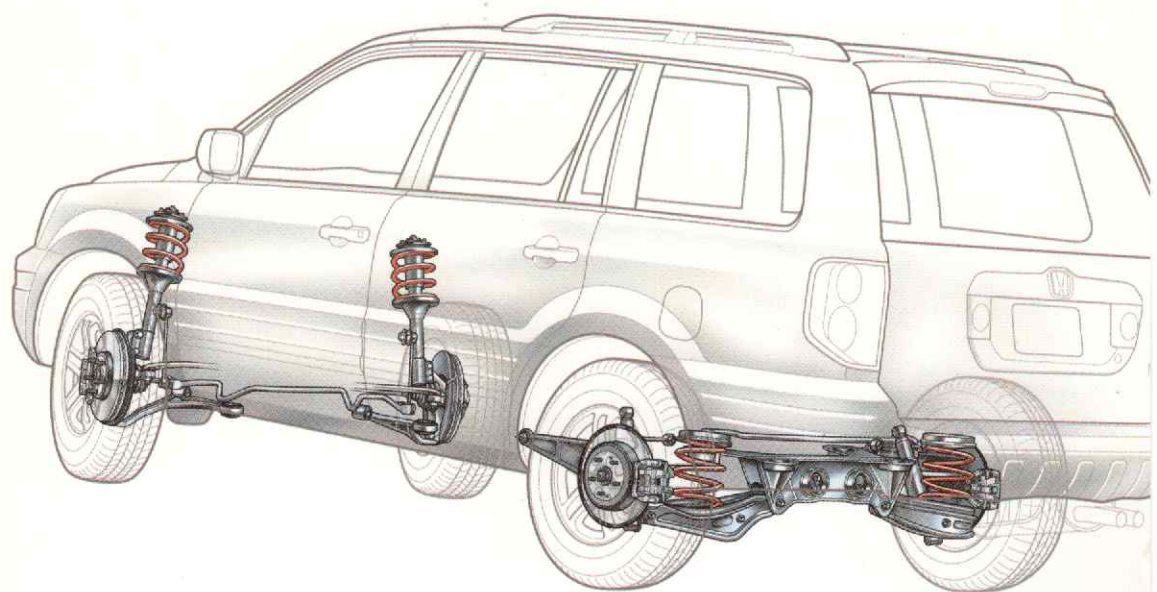
outside



PILOT EX-L SHOWN IN NIGHTHAWK BLACK PEARL



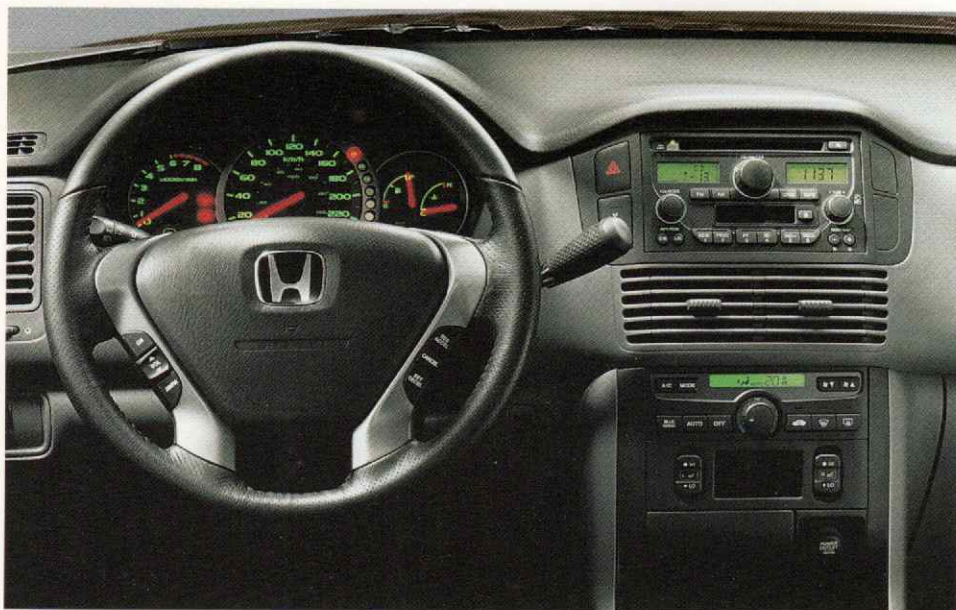
So you've picked up a few responsibilities along the way. All the more reason to get out and enjoy a big healthy dose of fun in the Pilot. Check out life from a fresh angle in a vehicle of soul-stirring ruggedness, an SUV that enables you to conquer all the pleasures of travel whether on- or off-road. Where do you really want to go? The exotic far corners of the earth? Then head there. Take it on that cross-country camping vacation, head up to the mountains, or go on that fishing trip you've always dreamed of. The world is your playground in the Pilot. So plan on getting out and start meeting nature on your own terms.



*When the road gets rough, that's where the virtues of the Pilot's 4-wheel independent suspension really shine. This tough, yet very refined, front strut and rear multi-link suspension takes what the road dishes out in stride. So whether paved or unpaved, the Pilot provides a smooth ride with excellent handling. And its wide track is designed to provide an extra measure of stability.*

**MEET NATURE ON YOUR OWN TERMS**

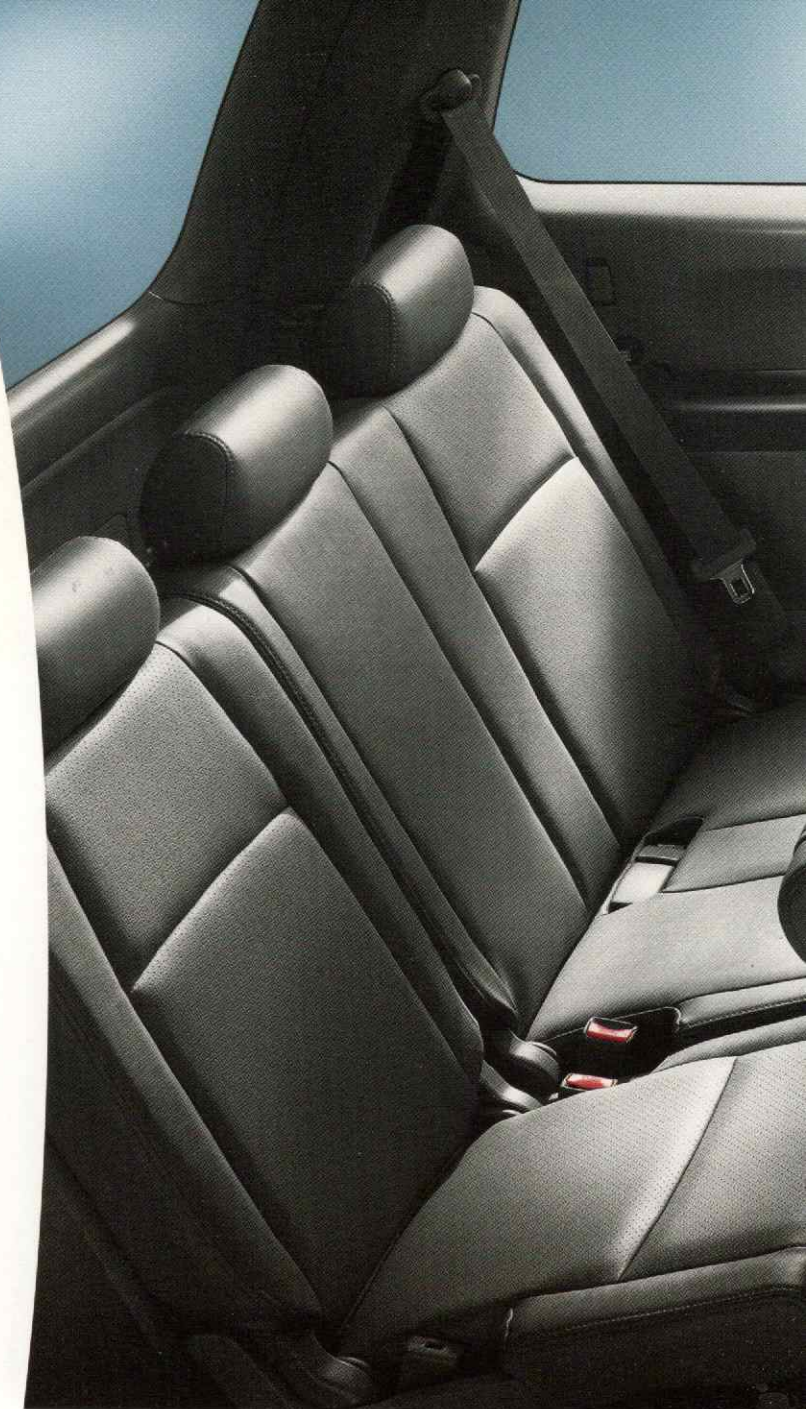




*With separate front and rear temperature and fan-speed controls, everyone travelling in your Pilot can enjoy their own personal comfort setting. The Pilot also comes equipped with a 155-watt, AM/FM stereo cassette with in-dash CD player and seven speakers. Pilot EX-L interior shown in Grey Leather.*



*The centre console is a personal organizer with space large enough to hold up to 13 CDs, plus an innovative storage area that folds down to reveal a pen clip, a business card holder and a unique sleeve to secure your cell phone.*



## THINK OF SPACE IN A NEW WAY

Taking a trip? The Pilot is big enough to carry up to 8 friends or family, with theatre-style seating so everyone has a great view. Got stuff to pick up? No sweat. The 60/40 split second- and third-row seats can be folded down flat and quickly reconfigured to suit your needs. The Pilot also has the brawn to tow a boat up to 2045 kilograms (4,500 lbs) when combined with the accessory towing package.\* Need to organize your trip? The front and rear door storage pockets help keep everything in its place, and a second-row fold down child activity tray holds crayons, hand-held electronic video games, and features two cup holders. Very ingenious, very convenient. If you're looking for that extra bit of comfort, the Pilot EX-L makes every trip a dream with first and second row leather-trimmed seats, a leather-wrapped steering wheel, and heated front seats.

\* Towing package includes Trailer Hitch, A.T.F. Cooler, P.S.F. Cooler, Trailer Hitch Ball, Trailer Hitch Harness





PILOT EX-L INTERIOR SHOWN IN GREY LEATHER

inside



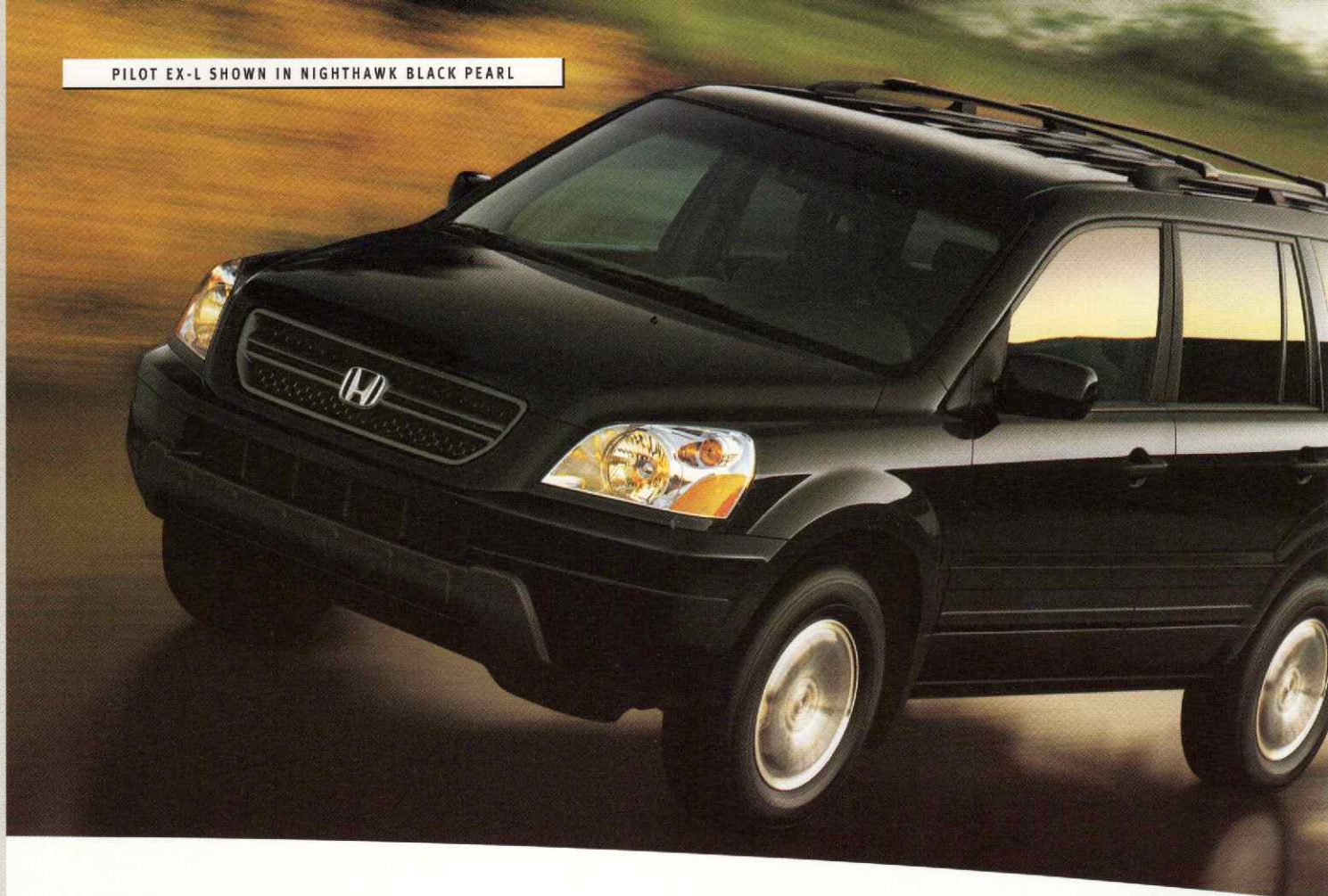




## SAFE & SOUND

The Pilot is all about security, with adjustable head restraints on 2nd and 3rd row seats and three-point seatbelts at all eight seating positions. Supplemental protection for the driver and front passenger is provided by standard dual-stage front airbags (SRS) and side airbags. The kids are also protected with the LATCH (Lower Anchors and Tethers for Children) System provided at the second-row outboard seating positions, and the child-seat tether anchors built into the third row seats.

PILOT EX-L SHOWN IN NIGHTHAWK BLACK PEARL



# engineering

WHAT DRIVES US  
IS WHAT DRIVES YOU

Honda produces more engines annually than any other manufacturer in the world. And they drew on this vast engineering know-how to build a smarter, more responsible engine. Even as the 3.5-litre, 24-valve, aluminum-alloy V6 pumps out power, it still burns clean enough to rate the Pilot as a Low-Emission Vehicle (LEV). In addition to that, long-life coolant and engine oil, solvent-free paints and lead-free materials help make it an environmentally friendly vehicle.





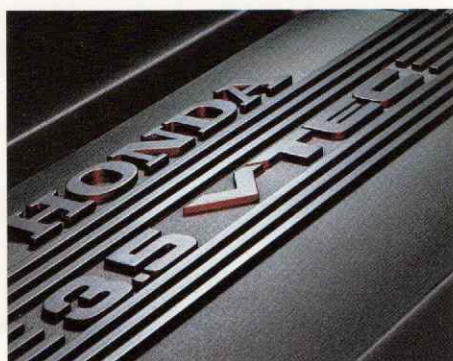
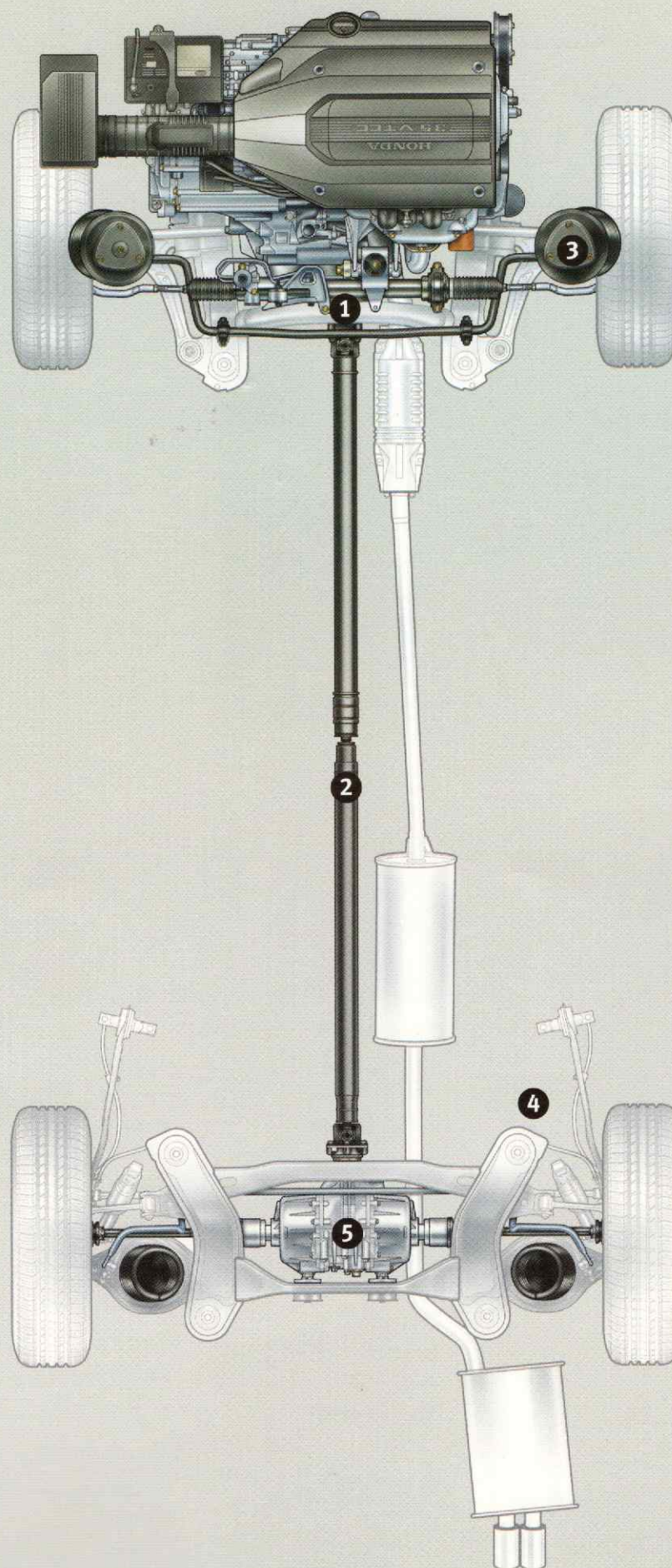
① *Front Differential: Drive is provided only to the front wheels during normal driving conditions, while power is supplied from the front differential through the transfer unit to the propeller shaft at all times.*

② *Propeller Shaft: Vibrations are dampened by a centre bearing mount, a tripod plunger joint and a tuned dynamic damper.*

③ *ABS Sensor: At each wheel, the sensors normally used to detect wheel lockup during panic stops are employed to inform the VTM-4 computer of wheel slippage due to traction loss.*

④ *VTM-4 Computer: The Variable Torque Management 4-Wheel Drive System (VTM-4) Electronic Control Unit (ECU) receives input from various sensors and other on-board computers to calculate when and how much torque needs to be transferred to the rear wheels.*

⑤ *Rear Differential: When commanded by the VTM-4 computer, torque received from the propeller shaft through the hypoid gears of the VTM-4 rear differential is distributed to the rear wheels by variable engagement of electromagnetic clutches.*







Personalize your Pilot with Genuine Honda Accessories. Each one is extremely durable, engineered to the highest quality and manufactured to Honda's exacting standards. If installed at the time of purchase by your authorized Honda Dealer, accessories are also covered by the same warranty as your vehicle.

# accessories

MAKE IT ALL YOUR OWN

## OTHER AVAILABLE ACCESSORIES

6 Disc CD Changer  
Alloy Sport Wheels (16")  
All-Weather Floor Mats  
Ashtray  
Auto Day/Night Mirror  
Back-up Sensor  
Bike Attachment  
- Interior  
Bike Attachment  
- Roof  
Bike Attachment  
- Trailer Hitch Mount  
Bumper Garnish  
- Front/Rear  
Cargo Liner  
Cargo Organizer  
Cargo Tray  
Cigarette Lighter  
Door Mirror Cover (Chrome)  
Engine Block Heater  
Fog Lights  
Front Bumper Trim  
Front Bumper Trim Garnish  
(Chrome)



Full Nose Mask  
Gold Plated Emblem Kit  
Half Nose Mask  
Hood Edge Protector  
Locking Wheel Nuts  
Pilot Accessory Luggage  
Rear Splash Guards  
Roof Basket  
Roof Box  
Roof Rack Cross Bars  
Running Boards  
Separation Net  
Side Step Bars  
Ski Attachment  
Tonneau Cover  
Touch-up Paint  
Touch-up Paint Pen  
Towing Package:  
- Trailer Hitch  
- A.T.F. Cooler  
- P.S.F. Cooler  
- Trailer Hitch Ball  
- Trailer Hitch Harness

Wood-Grain Dash Trim  
Wood-Grain Interior Trim  
Wood-Grain Shift Knob  
Wood-Grain Steering Wheel

**Visit your Honda Dealer  
or [www.honda.ca](http://www.honda.ca) for a  
complete list of accessories.**



# specifications

ENGINE	EX	EX-L
Type: 3.5L, SOHC, 24-Valve VTEC™	•	•
Displacement (cc)	3471	3471
Horsepower @ rpm (SAE net)	240@5400	240@5400
Torque (lb.-ft @ rpm)	242@4500	242@4500
Compression Ratio	10.0:1	10.0:1
Valve Train	4-Valves/Cylinder	4-Valves/Cylinder
Fuel System: Sequential Multi-Port Programmed Fuel Injection	•	•
Ignition System: Electronic	•	•

## DRIVE TRAIN

Type: Variable Torque Management – 4-Wheel Drive System	•	•
Automatic Transmission: 5-Speed Automatic with Electronically-Controlled Lock-Up Torque Converter and Grade Logic Control	•	•

## BODY / SUSPENSION / CHASSIS

Body Type: Unit Body	•	•
Front Suspension: Strut	•	•
Rear Suspension: Multi-Link with Trailing Arm	•	•
Steering Type: Variable Power-Assisted Rack-and-Pinion	•	•
Stabilizer Bars (mm, front/rear)	23/20	23/20
Brakes: Disc (Front Ventilated / Rear Solid)	•	•
Wheels	16" Alloy	16" Alloy
Tires: All-Season Radials	P235 / 70 R16 104S	P235 / 70 R16 104S

## EXTERIOR / INTERIOR DIMENSIONS

Wheelbase (mm)	2700	2700
Length (mm)	4775	4775
Width (mm)	1963	1963
Height (mm)	1793	1793
Track – Front/Rear (mm)	1685/1690	1685/1690
Curb Weight (kgs)	2007	2012
Front/Rear Dimensions – Headroom (mm) front/2nd row/3rd row	1065/1040/989	1065/1040/989
– Legroom (mm) front/2nd row/3rd row	1051/963/766	1051/963/766
– Hiproom (mm) front/2nd row/3rd row	1460/1438/1244	1460/1438/1244
Cargo Volume (L): 2nd and 3rd Row Folded Down	2557	2557
Cargo Volume (L): Behind 3rd Row	461	461
Passenger Volume (L)	4732	4732
Seating Capacity	8	8
Towing Capacity† (kgs)	2045	2045
Fuel Capacity (L)	72.7	72.7
Fuel Consumption*, City/HWY (L/100km) – A.T.	13.8/9.6	13.8/9.6

\*See Dealer for latest 2003 EnerGuide published by NRCan when available.

† When combined with the Accessory Towing Package which includes Trailer Hitch, A.T.F. Cooler, P.S.F. Cooler, Trailer Hitch Ball and Trailer Hitch Harness

## SAFETY

3-Point Seatbelts in All Seating Positions	•	•
4-Wheel Anti-Lock Braking System (ABS)	•	•
4-Channel with Electronic Brake Distribution (EBD)	•	•
8 km/h Impact Absorbing Bumpers	•	•
Child Proof Rear Door Locks	•	•
2nd Row LATCH (Lower Anchors & Tethers for Children) outboard only	•	•
3rd Row Child Seat Tether Anchors	•	•
Driver and Front Passenger Dual Stage Airbags (SRS)	•	•
Driver and Front Passenger Side Airbags (SRS) with Front Passenger Seat Occupant Size and Position Sensors	•	•
ECU Immobilizer	•	•
Dual Side Impact Door Beams	•	•
Front Occupant Knee Bolster	•	•

EXTERIOR FEATURES	EX	EX-L
Body-Coloured Side Protectors	•	•
Body-Coloured Bumpers	•	•
Front Splash Guards	•	•
Front Variable Intermittent Wipers	•	•
Folding Power Door Mirrors	Body-Coloured, Heated	Body-Coloured, Heated
Front and Rear Bumper Skid Garnish	•	•
Headlight Auto-Off	•	•
Rear Bumper Step	•	•
Rear Window Defroster with Timer	•	•
Rear Intermittent Wiper with Washer	•	•
Roof Side Rails	•	•
Spray Type Washer Nozzles	Body-Coloured	Body-Coloured
Tailgate Spoiler Garnisher	Body-Coloured	Body-Coloured

## INTERIOR FEATURES

Air Conditioning (CFC-Free) with Automatic Front Defrost Synchronization	•	•
AM/FM Stereo with CD and Cassette Player with 7 Speakers	•	•
Audio Anti-Theft	•	•
Beverage Holders, Front and Rear - 9	•	•
Carpeted Floor Mats	•	•
Centre Console Armrest with Storage	Leather-Covered	Leather-Covered
Cruise Control	•	•
Dual Front Illuminated Vanity Mirrors	•	•
Heated Front Seats	•	•
Homelink®, Garage Door Opener	•	•
Illuminated Driver's Power Window Switches	•	•
Illuminated Glove Box	•	•
Illuminated Ignition Lock	•	•
Keyless Remote Entry	•	•
Leather-Trimmed Interior (1st, 2nd Row only)	•	•
Micron Air-Filtration System	•	•
Overhead Sunglass Storage	•	•
Power Door Locks, 2-Stage with Anti Lock-Out	•	•
Power Windows with Key Off Operation and Driver Auto Up/Down with Anti-Pinch	•	•
Rear Cargo Area Light	•	•
Rear Cargo Hooks	•	•
Rear Cargo Net	•	•
Rear Cargo Tie Downs	•	•
Rear Floor Storage Box	•	•
Remote Fuel Lid Release with Cap Holder	•	•
Second Row Seat 60/40 Split and Easy-Entry Slide	•	•
Second Row Centre Activity Tray with Dual Cup Holder and Storage areas	•	•
Steering Wheel Mounted Audio and Cruise Controls	•	•
4-Spoke Steering Wheel	•	Leather-Wrapped

## COLOURS (EXTERIOR / INTERIOR)

Nighthawk Black Pearl/Grey	•	Leather
Starlight Silver Metallic/Grey	•	Leather
Redrock Pearl/Saddle	•	Leather
Havasu Blue Metallic/Grey	•	Leather
Sandstone Metallic*/Saddle	•	Leather

\*Available in September 2002.



Nighthawk Black Pearl



Starlight Silver Metallic



Redrock Pearl



Havasu Blue Metallic



Sandstone Metallic\*





**HONDA.**  
**THE PLEASURE WILL BE ALL YOURS.**



The Honda No Nonsense Warranty covers all power train components in your new Honda. This includes manufacturing defects on almost everything essential to the basic operation of the vehicle. For 5 years or 100,000 km, the power train warranty also covers items from the engine block and transmission, to smaller but important items such as the water and fuel pumps as well as the drive shafts. Audio components are covered for 3 years. And your car's body is protected for 3 years against surface corrosion and for 5 years against perforation due to corrosion. Plus, we offer 100% battery coverage for the first 2 years and 50% for the third year.



Whether you lease or purchase your vehicle, why not prolong your worry-free ownership experience even further with our flexible selection of Mechanical Coverage that extends up to 7 years or 160,000 km. We also offer the option of Roadside Assistance that provides you with emergency services such as Lock Out, Towing, Gas Delivery, Trip Interruption, Car Rental, Tire Road Hazard, and more. Honda Plus is designed, administered and backed by Honda Canada Inc., so you can count on us being there when you need us most. Just ask your Dealer for full details and how you can include Honda Plus with your vehicle purchase.



You can also protect your investment by bringing your Honda home to your Honda Dealer. Our Genuine Honda Replacement Parts are made to the exact same standards as original Honda Components and are guaranteed by our Genuine Honda Parts Warranty. Plus, they're installed by factory trained technicians who know your Honda best. So when it's time for your vehicle's regular maintenance check-up, don't open your hood to strangers.



Start your Honda experience with Honda Future Value Leasing and enjoy the benefits of automatic GAP protection, low monthly payments, more vehicle for your money, and a closed-end lease. Or consider Honda Future Value Financing. This option to leasing offers highly competitive rates with the convenience of one-stop shopping right in the Dealership. In addition, we work together to create a plan to fit your particular budget. Contact your local Honda Dealer for further details on how Future Value Leasing or Future Value Financing\* can benefit you.

\*Available in all areas outside of Quebec.

©2002 Honda Canada Inc., 715 Milner Avenue, Toronto, Ontario, Canada M1B 2K8

*Remember Your Seatbelts. It's a Simple Fact of Life.* Specifications, features, illustrations and equipment shown in this catalogue are based upon the latest available information at the time of publication. Although descriptions are believed to be correct, accuracy cannot be guaranteed. Honda Canada Inc. reserves the right to make changes at any time, without notice or obligation, in colours, specifications, accessories, materials and models. Some vehicles are shown with optional equipment. ®Homelink is a registered trademark of Prince Corporation, a Division of Johnson Controls. Accord, Civic, Odyssey, CR-V, Insight, S2000, and Pilot are registered trademarks of Honda Motor Co. Ltd. For more information call 1-888-9 HONDA-9.



**HONDA**