

2003 Honda

ACCORD SEDAN



Don't let its
sleek new style
fool you.



Granted, this latest edition of the legendary Accord has been redesigned from the ground up to be even more stylish, comfortable and **fun to drive** than ever. It also offers an entirely new level of **refinement** that other cars will be measured against for years. And yet this is unmistakably a Honda Accord, named to *Car and Driver's* **"10 Best Cars"** roster for 16 of the past 20 years.

What makes that feat even more remarkable is the fact that the Accord is just getting warmed up.



It's still 100% Honda Accord

So what's new? Actually, just about everything. There's the powered-up 160-hp 4-cylinder and 240-hp V-6 engines, performing in concert with a highly refined 4-wheel double wishbone suspension. Inside, Accord is **roomier** and more comfortable, with a strikingly restyled interior design. Every model offers an enhanced level of amenities, culminating in the leather-trimmed EX V-6 with its dual-zone automatic climate control and an available Honda Satellite-Linked Navigation System.^{TM1} And it's all dressed in a sleek, **SENSUOUS** new body that pretty much says it all.

Accord EX V-6 Sedan shown in Satin Silver Metallic.

Accord DX Sedan

- 160-hp, 2.4-liter, 16-valve i-VTEC® engine
- 5-speed manual transmission
- Available 5-speed automatic transmission
- 4-wheel double wishbone/rear five-link suspension
- Anti-lock braking system (ABS)
- 15" wheels w/full covers
- AM/FM/CD audio system
- Power windows
- Tilt and telescopic steering column.
- Progressive self-illuminating gauges
- Dual-stage front airbags (SRS)*

Accord LX Sedan

All DX features, plus:

- Air conditioning w/air-filtration system
- Power mirrors and door locks
- Cruise control
- Remote entry system w/power window control
- Sunglasses holder

Accord EX Sedan

Adds to or replaces LX features:

- Front side airbags
- 6-disc in-dash CD changer
- Power moonroof w/tilt feature
- Available leather-trimmed interior w/heated front seats and dual-zone automatic climate control system

Accord LX V-6 Sedan

Adds to or replaces LX features:

- 240-hp, 3.0-liter, 24-valve VTEC® V-6 engine
- 5-speed automatic transmission
- Front side airbags
- Driver's seat w/8-way power adjustment
- Traction Control System (TCS)


Accord EX V-6 Sedan

Adds to or replaces LX V-6 features:

- Leather-trimmed interior w/heated front seats
- Dual-zone automatic climate control system
- Side-curtain airbags
- Available Honda Satellite-Linked Navigation System w/voice control¹




Accord EX V-6 Sedan shown in Desert Mist Metallic.



While the Accord's new styling will certainly give your eyes something to smile about, its slippery curves and refined details also serve more practical purposes. Its low coefficient of drag—it's a .30 Cd, to be precise—enhances Accord's fuel economy and reduces wind noise within the cabin.



Accord EX V-6 Sedan shown in Graphite Pearl.

A high-angle, wide shot of the front interior of a car. The seats are upholstered in black leather with horizontal stitching. The dashboard, center console, and door panels are also in black. A steering wheel with the Honda logo is visible on the right. A navigation screen is mounted in the center of the dashboard. The text "How'd we make it roomier inside without making it bigger outside?" is overlaid on the left side of the image.

How'd we
make it roomier
inside without
making it
bigger outside?

Accord EX V-6 Sedan interior shown in Black Leather with available Honda Satellite-Linked Navigation System.¹



Once you've
settled in, you
won't care.

Accord EX V-6 Sedan interior shown in Black Leather with available Honda Satellite-Linked Navigation System.*

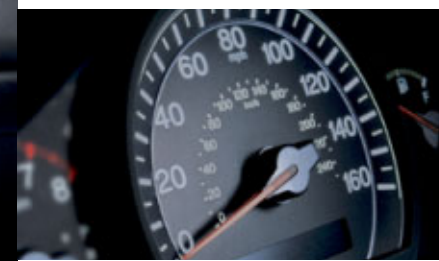


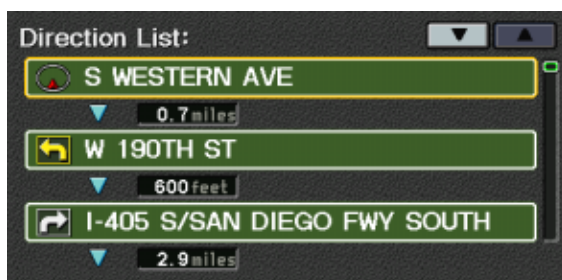
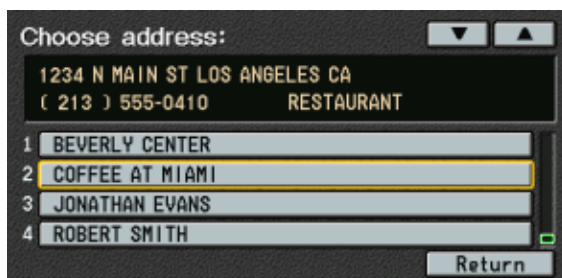
It's you all over. Honda engineers set out to make the new Accord an exceedingly driver-oriented car—that just happens to accommodate four others in blissful ease. Hence the multi-adjustable driver's seat and a steering wheel that not only tilts, but telescopes as well. Every control is a masterwork of **ergonomic design**. And handy, thoughtful features abound, including a center-console bin that will readily hold 12 CD cases.



It's easy to imagine spending lots of time in the new Accord. Supple leather is standard on EX V-6, available on the EX. Plus, the ignition key-integrated **remote entry system** on most models allows you to lower all four windows and let cool air into the car as you approach.

Ready, set, drive. When you open the door of your Accord, you can see it come to life—its **LED instrument panel** begins to illuminate. Insert the ignition key, and the panel progressively brightens. Start the engine and it's showtime, with full illumination of gauges and needles.





Accord's list of amenities includes power windows with a driver's auto-up/down feature. Most models also have power mirrors and door locks, too. A **power moonroof** is standard on all EX models. Leather-trimmed models are available with the latest Honda Satellite-Linked Navigation System.¹ You can control many functions of this powerful new system—plus the audio and climate-control systems—by simply speaking. It combines GPS technology and an 8.0-gigabyte DVD database to guide you with clear graphic and voice prompts.* It can also locate over **7,000,000 points of interest**, like the nearest listed ATM, gas station or restaurant so you can find just what you want. Other features include a calculator and a calendar with reminder function.



A playground for your fingertips.

On EX and EX V-6 models, you can turn music into talk radio, switch CD tracks or adjust the volume with Accord's sleekly integrated **steering wheel-mounted audio controls**. The cruise control on Accord LX, EX and V-6 models is operated from here as well. And this is where you'll also find the **voice-control switches** on navigation system-equipped Accord models.

* Only major streets, roads and highways are mapped outside metropolitan areas. See the navigation system owner's manual for the current detailed coverage areas.



Get a warm feeling. Leather-trimmed Accord models come with **2-level heating** for the front seats. Select models also feature a driver's seat with **8-way power adjustment**. And the front passenger's seat has standard 4-way power adjustment on the EX V-6.



Put it here. Raise the sliding armrest on the Accord's center console to find storage space that's quite versatile. There's a **coinholder** that lets you sort your change, a place for your cell phone[†] and a **12V power outlet** to plug it in. All with room to spare for odds and ends.

Optimize your environment. Select Accord EX models let you enjoy a **dual-zone automatic climate control system** that allows the driver and front passenger to individually adjust their comfort settings. For audio entertainment, DX models offer an AM/FM stereo CD player with two speakers. The Accord LX models surround your ears with an additional four speakers. And every EX and V-6 upgrades to a **6-disc in-dash CD changer**.

[†] Drive responsibly. State laws prohibit distracted driving.

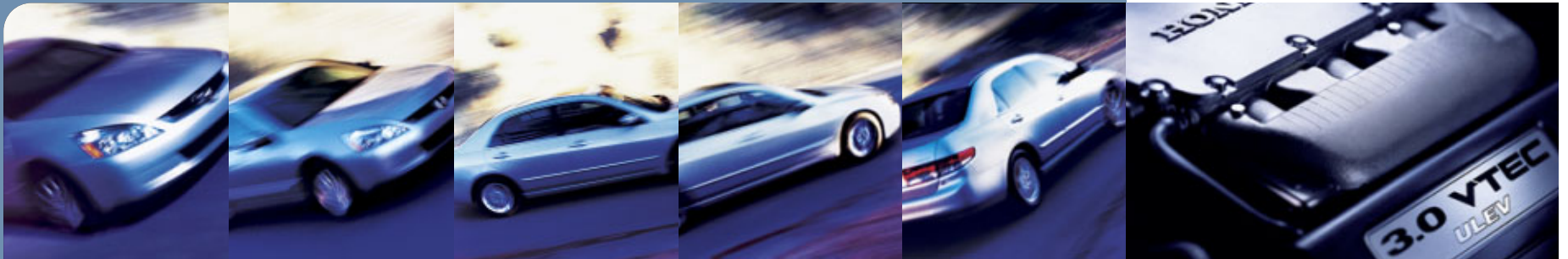


Our engineers
were aiming for
performance to
match its looks.



Accord EX V-6 Sedan shown in Nighthawk Black Pearl.

Big power can be fun. But a **broad powerband** is what you'll appreciate more. So both Accord engines employ variable valve timing and lift electronic control (VTEC) technology. **VTEC** uses two distinct sets of valve timing and lift specifications to optimize both low-rpm torque and high-rpm horsepower. Called i-VTEC on the new 160-hp, 16-valve, DOHC 4-cylinder, this advanced version features variable timing control (VTC) for infinitely adjustable intake-cam timing. Both engines use PGM-FI Programmed Fuel Injection and direct ignition for precise combustion. A racing-inspired **drive-by-wire** throttle system is on the V-6. And it's ingeniously engineered to go 105,000 miles before its first tune-up, while the 4-cylinder is set for 110,000 miles.*



We think you'll agree they've overachieved.

A 5-speed manual transmission comes standard on 4-cylinder models. Its sporty, short-throw shifter feels light and precise, while clutch-pedal force has been reduced. A **5-speed automatic transmission** is the standard on V-6 Accords, available on 4-cylinder models. This sophisticated transmission delivers the optimum combination of enjoyable performance and excellent fuel economy² in a highly refined, smooth-shifting package.

*Does not apply to fluid and filter changes. See owner's manual for details.

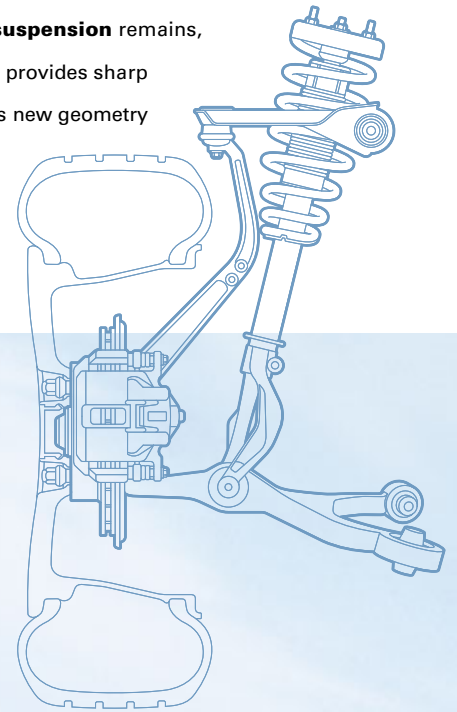
For 2003, Accord's tried-and-true 3.0-liter V-6 gets a 20% boost in horsepower—to 240—while still using regular unleaded fuel. The improvement is due to a new high-inertia intake manifold, a **high-flow exhaust** and a higher 10:1 compression ratio.

Of course, there's no clean-air penalty attached. The V-6 is a Low-Emission Vehicle (LEV). And select 4-cylinder Accords³ are Super-Ultra-Low-Emission Vehicles (**SULEV**) that just happen to be among the world's cleanest gasoline-powered cars.

Fast learners. The new Accord isn't a racecar, but it has some very close relatives that are. Honda has been racing and winning on the world's fastest racetracks for over four decades. Engineers often serve an apprenticeship on the racing teams, where they learn to **innovate under pressure**. This ability prepares them to achieve greater advances in performance, dependability and safety when they design new cars for the street—like the Accord.



It flat handles the curves. While the Accord's fully independent **4-wheel double wishbone/rear five-link suspension** remains, it has been significantly upgraded. This system provides sharp handling response and high stability, while its new geometry refinements help reduce body-pitch angles during acceleration and braking. The precise **rack-and-pinion steering system** features variable power-assist.



Accord EX V-6 Sedan shown in Desert Mist Metallic.

Honda engineers applied all of their vast experience in redesigning the Accord chassis for tighter handling as well as a quieter, more refined ride. They created **subframes** that provide the suspension components with solid, precise mounting while helping to isolate the passenger cabin from road noise and vibration. And they devised an **engine-mount system** that improves both dynamic performance and ride comfort.



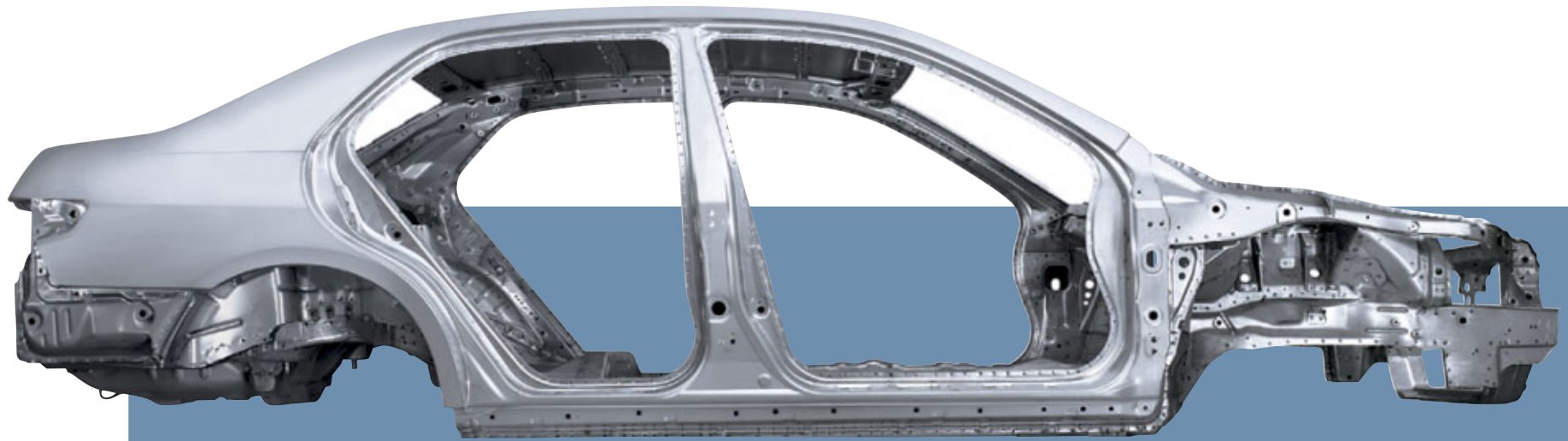
Honda Factory crash test shown.

Front and rear crush zones have been designed into the new Accord's structure to help absorb crash energy and direct it around the passenger cabin. Honda engineers evaluate the strength of the safety cage with advanced computer simulations, then they test the crashworthiness with real-world simulations.



Dual-stage front airbags are standard on every Accord, and front side airbags are available on the LX model and come standard on EX and the V-6 models. Plus, a new side-curtain airbag system is standard equipment on the Accord EX V-6. In the event of a moderate-to-severe side impact, this system deploys on the affected side, partially covering the side windows to offer additional head protection.

The Accord's occupants are surrounded by a rigid safety cage, almost half of which is made up of **high-tensile steel** for great strength. It works with a system of dual-stage, dual-threshold front airbags (SRS)* designed to help prevent injury in a moderate-to-severe frontal impact. They deploy at one of two rates and thresholds depending on impact severity and seat-belt use. Every Accord also has an **Immobilizer Theft-Deterrent System** that prevents the car from starting unless the proper electronically coded key is used. With each use, the code changes for increased security.



Confident stopping All new Accord models are equipped with an anti-lock braking system (ABS) that's designed to help drivers retain steering control when braking hard. Both V-6 models add a **Traction Control System** (TCS) that uses the ABS wheel-speed sensors and helps optimize traction at speeds up to 50 mph.





Accord EX V-6 Sedan shown in Satin Silver Metallic.

Specifications

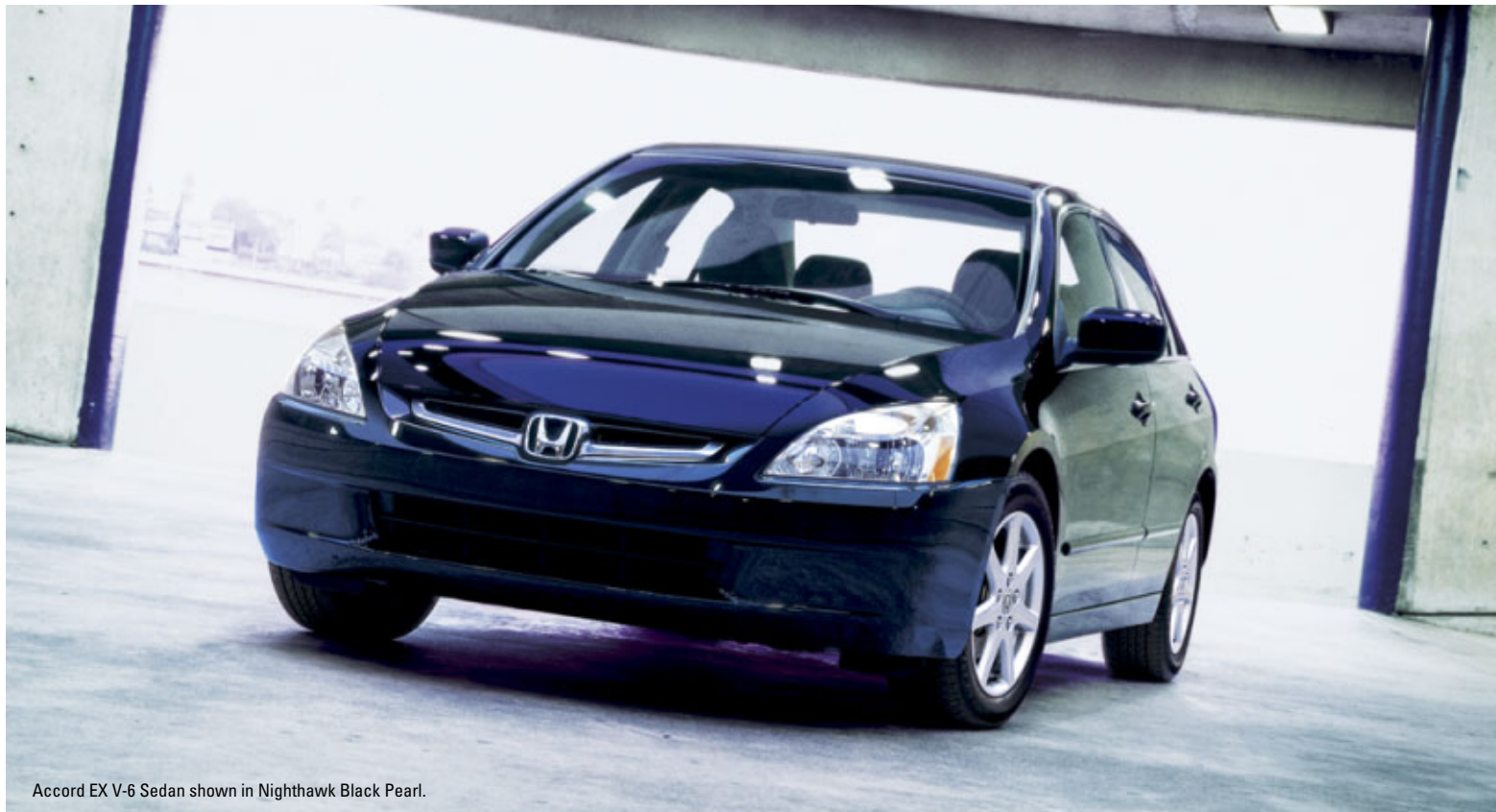
Engineering	DX	LX	EX	LX V-6	EX V-6
Engine Type: Aluminum-Alloy	In-Line 4	In-Line 4	In-Line 4	V-6	V-6
Displacement (cc)	2354	2354	2354	2997	2997
Horsepower @ rpm (SAE net)	160 @ 5500	160 @ 5500	160 @ 5500	240 @ 6250	240 @ 6250
Torque (lb.-ft. @ rpm)	161 @ 4500	161 @ 4500	161 @ 4500	212 @ 5000	212 @ 5000
Compression Ratio	9.7:1	9.7:1	9.7:1	10.0:1	10.0:1
Valve Train	16-Valve DOHC i-VTEC®	16-Valve DOHC i-VTEC	16-Valve DOHC i-VTEC	24-Valve SOHC VTEC®	24-Valve SOHC VTEC
Multi-Point Fuel Injection	•	•	•	•	•
Front-Wheel Drive	•	•	•	•	•
Emissions Rating (CARB)	LEV-II LEV	LEV-II LEV or LEV-II SULEV ⁴	LEV-II LEV or LEV-II SULEV ⁴	LEV-II ULEV ³	LEV-II ULEV ³
Emissions Rating (Federal)	Tier 2, Bin 5	Tier 2, Bin 5	Tier 2, Bin 5	Tier 2, Bin 5	Tier 2, Bin 5
Direct Ignition System with Immobilizer	•	•	•	•	•
Tune-Up Interval*	110,000-Mile	110,000-Mile	110,000-Mile	105,000-Mile	105,000-Mile
Transmission					
5-Speed Manual Transmission	•	•	•		
5-Speed Automatic Transmission (available)	•	•	•		
5-Speed Automatic Transmission with Electronic Throttle Control (standard)				•	•
Final Drive Ratio (MT/AT)	4.39/4.44	4.39/4.44	4.39/4.44	NA/4.43	NA/4.43
Body/Suspension/Chassis					
Unit-Body Construction	•	•	•	•	•
Double Wishbone Front Suspension	•	•	•	•	•
Five-Link Double Wishbone Rear Suspension	•	•	•	•	•
Stabilizer Bar (mm, front/rear)	25.4/NA	25.4/14.0	25.4/14.0	25.4/13.0	25.4/13.0
Variable-Assist Power Rack-and-Pinion Steering	•	•	•	•	•
Steering Wheel Turns, Lock-to-Lock	2.98	2.98	2.98	2.93	2.93
Turning Diameter, Curb-to-Curb (ft.)	36.1	36.1	36.1	36.1	36.1
Power-Assisted Ventilated Front Disc/Rear Drum Brakes	•	•			
Power-Assisted Ventilated Front Disc/Solid Rear Disc Brakes			•	•	•
Anti-Lock Braking System (ABS)	•	•	•	•	•
Electronic Brake Distribution System (EBD)			•	•	•
Traction Control System (TCS)				•	•
Wheels	15" with Full Covers	15" with Full Covers	16" Alloy	16" with Full Covers	16" Alloy
All-Season Tires	P195/65 R15	P205/65 R15	P205/60 R16	P205/60 R16	P205/60 R16
Interior Measurements					
Headroom (in., front/rear)	40.4/38.5	40.4/38.5	38.3/36.8	40.4/38.5	38.3/36.8
Legroom (in., front/rear)	42.6/36.8	42.6/36.8	42.6/36.8	42.6/36.8	42.6/36.8
Shoulder Room (in., front/rear)	56.9/56.1	56.9/56.1	56.9/56.1	56.9/56.1	56.9/56.1
Hiproom (in., front/rear)	54.6/53.5	54.6/53.5	54.6/53.5	54.6/53.5	54.6/53.5
Cargo Volume (cu. ft.)	14.0	14.0	14.0	14.0	14.0
Passenger Volume (cu. ft.)	102.7	102.7	97.7	102.7	97.7
Seating Capacity	5	5	5	5	5
Exterior Measurements					
Wheelbase (in.)	107.9	107.9	107.9	107.9	107.9
Length (in.)	189.5	189.5	189.5	189.5	189.5
Height (in.)	57.1	57.1	57.1	57.1	57.1
Width (in.)	71.5	71.5	71.5	71.5	71.5
Track (in., front/rear)	61.1/61.2	61.1/61.2	61.1/61.2	61.1/61.2	61.1/61.2
Curb Weight (lbs., MT/AT)	2989/3049	3053/3113	3109/3166	NA/3309	NA/3360
EPA Mileage Estimates†/Fuel Capacity					
5-Speed Manual Transmission (City/Highway)	26/34	26/34	26/34		
5-Speed Automatic Transmission (City/Highway)	24/33	24/33	24/33	21/30	21/30
Fuel (gal.)	17.1	17.1	17.1	17.1	17.1
Required Fuel	Regular Unleaded	Regular Unleaded	Regular Unleaded	Regular Unleaded	Regular Unleaded
Exterior Features					
Power Moonroof with Tilt Feature			•		•
Alloy Wheels	Accessory	Accessory	16"	Accessory	Exclusive 16"
Security System	Accessory	Accessory	•	•	•
Remote Entry System with Power Window Control		•	•	•	•
Dual Manual Remote-Operated Mirrors	•				
Body-Colored Side Molding	•	•	•	•	•
Body-Colored Door Handles and Dual Power Mirrors		•	•	•	•
Multi-Reflector Halogen Headlights	•	with Auto-Off	with Auto-Off	with Auto-Off	with Auto-Off

Features

Comfort and Convenience	DX	LX	EX	LX V-6	EX V-6
Air Conditioning with Air-Filtration System	Accessory	•	•	•	
Dual-Zone Automatic Climate Control System			(with Leather)		•
Honda Satellite-Linked Navigation System™ with Voice Activation			Available (with Leather)		Available
Power Windows with Auto-Up/Down Driver's Window	•	•	•	•	•
Illuminated Power Window Switches			•		•
Power Door Locks		•	•	•	•
Cruise Control		•	•	•	•
Leather-Wrapped Steering Wheel			(with Leather)		•
Steering Wheel-Mounted Audio Controls			•	•	•
Tilt and Telescopic Steering Column	•	•	•	•	
HomeLink® Remote System ²					•
Premium Interior Accents			•		•
Center Console with Sliding Armrest and Storage Compartments	•	•	•	•	•
Beverage Holders, Front and Rear (8 total)	6 Total	•	•	•	•
Dual Illuminated Vanity Mirrors	Non-Illuminated	•	•	•	•
Interior Ambient Console Lighting			•		•
Map Lights		•	•	•	•
Sunglasses Holder		•	•	•	•
Variable Intermittent Windshield Wipers	Non-Variable	•	•	•	•
Lockable Glove Compartment with Light	•	•	•	•	•
Remote Fuel Filler Door Release	•	•	•	•	•
Remote Trunk Release with Lock	•	•	•	•	•
Electronic Remote Trunk Release		•	•	•	•
Rear Window Defroster with Timer	•	•	•	•	•
Floor Mats	•	•	•	•	•
Side Door Pockets with Integrated Beverage Holder, Front and Rear	•	•	•	•	•
Seating					
Leather-Trimmed Seats and Door-Panel Inserts			Available		•
Heated Front Seats			(with Leather)		•
Driver's Seat with 8-Way Power Adjustment			(with Leather)	•	•
Driver's Seat Adjustable Lumbar Support			•		•
Driver's Seat with Power Height Adjustment		Manual	•		
Passenger's Seat with 4-Way Power Adjustment					•
Fold-Down Rear Seatback with Lock	•	•	•	•	•
Fold-Down Rear Seat Center Armrest/Trunk Pass-Through with Lock			•	•	•
Audio System					
120-Watt AM/FM/CD Audio System	with 2 Speakers	with 6 Speakers			
120-Watt AM/FM/6-Disc In-Dash CD Changer Audio System			with 6 Speakers	with 6 Speakers	with 6 Speakers
Instrumentation					
Progressive Self-Illuminating Gauges	•	•	•	•	•
Tachometer	•	•	•	•	•
Digital Odometer and Digital Trip Meters (2)	•	•	•	•	•
Door-/Trunk-Open Indicator Light	•	•	•	•	•
Low-Fuel and Low-Coolant Indicator Lights	•	•	•	•	•
Low-Oil-Pressure and Low-Brake-Fluid Indicator Lights	•	•	•	•	•
Maintenance Interval Indicator	•		•	•	•
Exterior Temperature Indicator			(with Leather)		•
Safety					
3-Point Seat Belts at all Seating Positions	•	•	•	•	•
Front 3-Point Seat Belts with Automatic Tensioning System	•	•	•	•	•
Adjustable Front Seat Belt Anchors	•	•	•	•	•
Dual-Stage Front Airbags (SRS)	•	•	•	•	•
Front Side Airbags with Passenger-Side Occupant Position Detection System (OPDS)		Available	•	•	•
Side Curtain Airbags					•
Side-Impact Door Beams	•	•	•	•	
Lower Anchors and Tethers for Children (LATCH)	•	•	•	•	•
Rear-Center Child-Seat Tether Anchor	•	•	•	•	•
Child-Proof Rear Door Locks	•	•	•	•	•
Emergency Trunk Opener	•	•	•	•	•

*Does not apply to fluid and filter changes. See your owner's manual for details.
†Based on 2003 EPA mileage estimates. Use for comparison purposes only. Actual mileage may vary.

¹Available January 2003. ²Based on 2003 EPA mileage estimates. Use for comparison purposes only. Actual mileage may vary. ³ULEV-rated on V-6 models available in CA, MA, ME, NY and VT. ⁴SULEV-rated vehicles include zero evaporative emissions and are CARB-certified as partial Zero-Emission Vehicles. Available on select LX and EX 4-cylinder models with AT in CA only. ⁵HomeLink® is a registered trademark of Prince Corporation, a wholly owned subsidiary of Johnson Controls™ **#3-Year/36,000-Mile Limited Warranty:** Ordinary maintenance or adjustments, parts subject to normal wear and replacement, and certain items are excluded. See your Honda dealer for the terms and conditions of this limited warranty. **Always use seat belts and appropriate child seats. Children are safest in the rear seat.** Specifications, features, illustrations and equipment shown in this brochure are based upon the latest available information at the time of printing. Although descriptions are believed correct, accuracy cannot be guaranteed. American Honda Motor Co., Inc., reserves the right to make changes at any time, without notice or obligation, in colors, specifications, accessories, materials and models. Some features mentioned herein are not available in all areas. See your Honda dealer for details. Some vehicles may be shown with optional equipment. Available = Optional. NA = Not applicable. California version differs slightly due to emission standards. Honda, the H-mark symbol, Honda Care, Honda Satellite-Linked Navigation System, i-VTEC and VTEC are trademarks of Honda Motor Co., Ltd. ©2002 American Honda Motor Co., Inc.



Accord EX V-6 Sedan shown in Nighthawk Black Pearl.



Make it yours alone. Quality Honda accessories give you the opportunity to fine-tune your new Accord just how you like it. Whether you want to turn up the style, the versatility or the exclusivity, every accessory is designed and built to adhere to the strictest Honda standards.

Available accessories:

- ☐ 15" Alloy Wheels
- ☐ 16" Chrome Alloy Wheels
- ☐ 17" Alloy Wheels
- ☐ Fog Lights
- ☐ Cassette Player
- ☐ 8-Disc CD Changer
- ☐ 6-Disc In-Dash CD Changer
- ☐ MP3 Player
- ☐ Rear Wing or Deck Lid Spoiler
- ☐ DVD i-VES (In-Vehicle Entertainment System)
- ☐ Hands-Free Cellular Telephone System

HONDA

Financial Services

Whether you buy or lease a Honda, **Honda Financial Services** can assist you with the process. Ask your dealer which lease or purchase plan best suits your needs.

HONDA

Care

Honda Care™ is a comprehensive and affordable vehicle and travel protection plan that is backed by Honda reliability, service and parts. See your dealer for details.



Civic Sedan



Civic Hybrid



S2000



Accord Coupe



Civic Coupe



Civic Si



Insight



Element (Winter 2002, prototype shown.)



CR-V



Pilot



Odyssey