

2002

H O N D A A C C O R D






Accord Sedan EX-L shown in Satin Silver Metallic.

sedan

GETTING THERE IS HALF THE FUN.



The fun begins the moment you get in and doesn't let up until you reach your destination. Spacious, spirited and ingeniously crafted, Accord sets the

standard for every other family sedan in its class. Then again, Accord has appeared on Car and Driver's list of  "10Best Cars" for no fewer than 15 out of 19 years, including the last four.

Poised, powerful and fun to drive, a vehicle that does everything exceedingly well. There's nothing quite like Accord Sedan. Experience its agility from inside the quiet 5-passenger

interior. A place where comfort and control complement one another beautifully to provide an inspired driving environment. Let the powerful VTEC™ engine move you, and relax in the

knowledge that it has been designed for reduced maintenance, with no major tune-up required for the first 160,000 km*. Now channel that power to the road. Accord Sedan is a

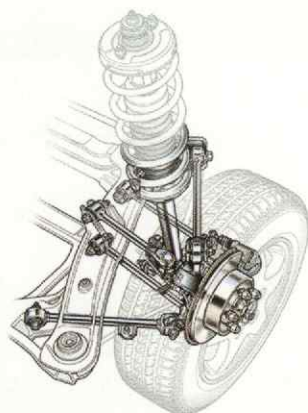
family car made for the driver in you — offering an experience that could only be described as



Accord Sedan EX-V6 interior shown in Ivory Leather (U.S. model shown).

exhilarating. A trait it owes in part, to Honda's legendary racing heritage and advanced technology. Choose the model that suits your lifestyle perfectly. From the well appointed, and thoughtfully designed 4-cylinder LX, Special Edition and EX-L, to the very powerful and lavish Special Edition V6 and EX-V6. Now let the fun begin.

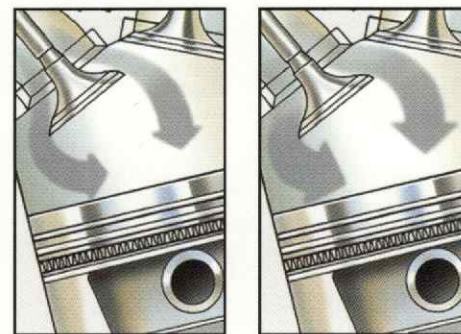
*Does not apply to fluid, filter changes, tire rotations, inspections and lubrications. See your owner's manual for details.



The advanced fully Independent Double-Wishbone/Multi-Link Suspension System is designed to help isolate the wheels from the body so the springs and HPV shock absorbers can effectively cushion you from the road for a more enjoyable ride.



Accord's 2.3-litre 4-cylinder engine features an innovative, Honda-designed Second-Order Balance System that minimizes engine vibration and noise, resulting in a smoother, quieter ride.



Honda VTEC™ (Variable valve Timing and lift Electronic Control) technology gives Accord strong low-end torque and plenty of high rpm power. The result is less stress on the engine, more power, greater fuel efficiency and lower emissions.



Accord Coupe EX-L shown in Satin Silver Metallic.

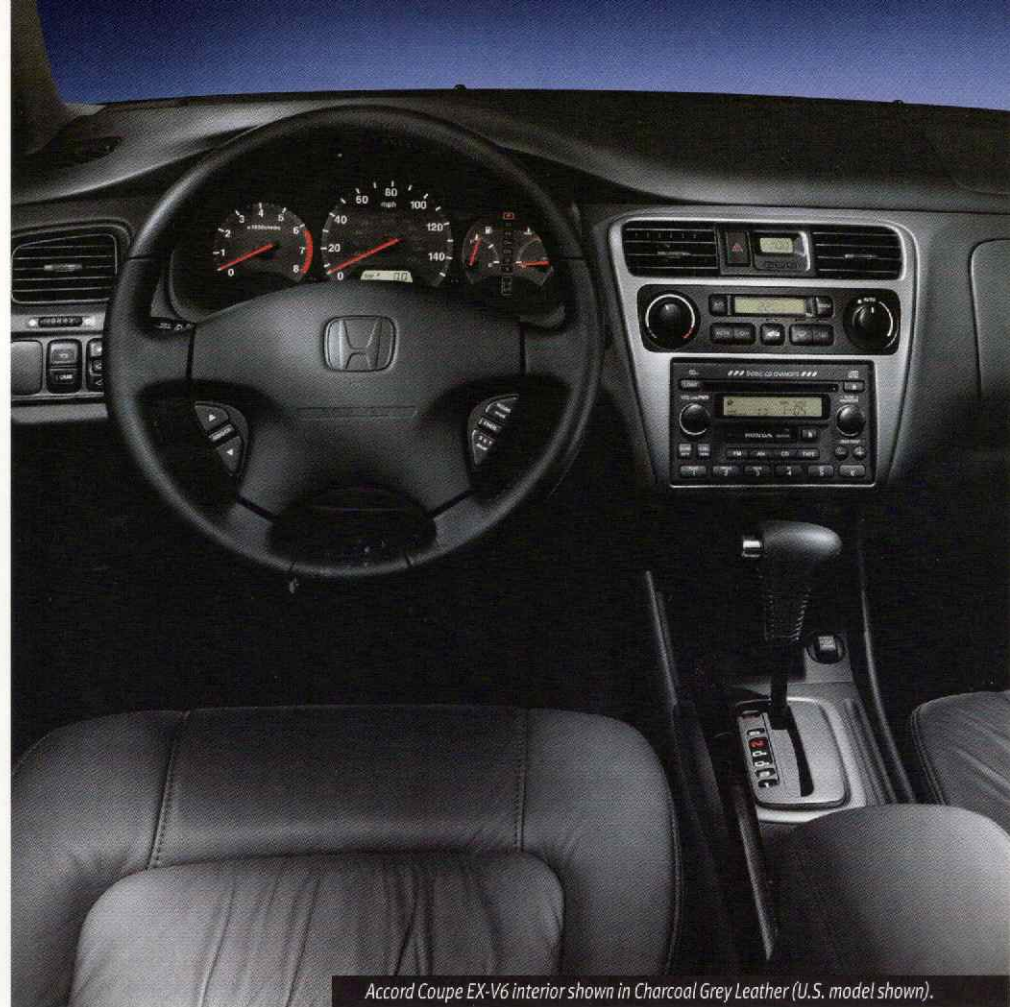
coupe

TOTAL FUN. ZERO GUILT.



Aggressive, breath-taking and every bit as exciting to look at as it is to drive. The 2002 Accord Coupe is an ingenious blend of elegance and sportiness, wrapped in sleek, sensual styling and crafted with

legendary Honda quality and refinement. From the effortless yet seductive way it delivers its power, to its unmatched poise with which it sweeps around bends. It's a package so complete, so sophisticated and so satisfying, it can only be described as exhilarating. Listen to the powerful VTEC™ engine sing under your control. Launch it into gear and experience its precise handling. Your Coupe always delivers a precise and responsive feel. The pulse-quickenning drive is further enhanced from an environment of complete comfort and control – a sporty and spacious interior where every feature has been carefully designed and positioned for your driving fun. With Accord Coupe, it's all about you, the road and



Accord Coupe EX-V6 interior shown in Charcoal Grey Leather (U.S. model shown).

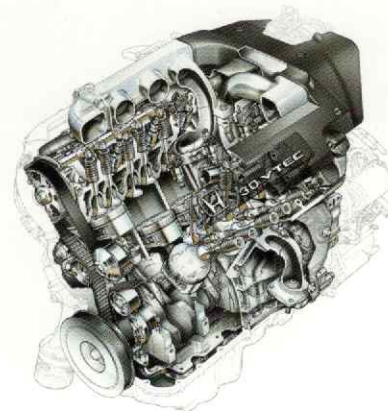
the things you love to do. Choose from the stylish and well-appointed 4-cylinder Special Edition and EX-L, or the racy EX-V6. Then experience the fun first hand and start looking at the road altogether differently.



The Honda Progressive Valve (HPV) shock absorbers soak up small bumps and remain firm against body lean in corners so that you experience precision handling with a crisp, exciting ride.



The 4-Wheel Double-Wishbone Suspension is designed to keep your tires level with the road for excellent traction. Specially designed control links maintain wheel position precisely for accurate steering. And front and rear stabilizer bars help minimize body roll through even the most vigorous of turns.



Designed and tested on the world's most challenging racetracks, the 60-degree, 200 horsepower, 3.0 litre V6 engine provides the optimum in performance and handling.

The interior of every Accord is generously proportioned with plenty of head- and legroom for driver and passengers alike. Trunk space is also cavernous making both the Sedan and Coupe ideal travelling companions. Controls are also easy to use, and large analog gauges convey important information at a glance. Whether you're driving the EX-V6 Sedan or Coupe,

standard amenities abound. The leather trimmed seats offer unparalleled comfort and the leather trimmed door panel inserts and leather-wrapped steering wheel round out the elegant look of the cabin. The front seats are also heated, and the driver's seat features an adjustable lumbar support, 8-way power positioning, and a power height adjustment. Power windows,



Accord Sedan EX-V6 interior shown in Ivory Leather.

heated power mirrors, cruise control and a power moonroof make driving all the more fun. There's even a remote keyless entry system that lets you operate the power door locks from up to 15 metres away. And after a long day on the road, the Homelink® Remote System lets you open your garage doors from the comfort of your driver's seat.



For extra-long or odd-sized cargo, the trunk pass-through with lock is ideal. Standard on all Sedans, it folds down to form an armrest with dual beverage holders, giving you access to an extremely versatile and spacious trunk with 399 litres of cargo space.

interior

GET IN ON THE FUN.

Available on all Special Edition and EX models, the power moonroof with tilt feature provides the freedom to let in as much or as little of the outdoors as you want with just one push of a button.



The automatic climate control on EX-V6 models keeps your cabin at the comfort level that's just right for you, and your air conditioning comes with a micron air-filtration system that helps prevent allergens and dust from intruding upon the cabin.



Make your drive even more entertaining with hours of uninterrupted music. Available on all EX models, the 6-disc In-dash CD changer with 6 speakers lets you pump out all of your favourite tunes.

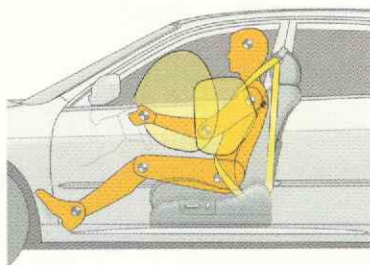


safety

LET THE STARS BE YOUR GUIDE.
ALL FIVE OF THEM.



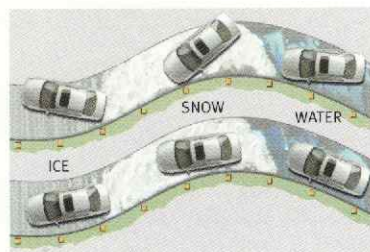
At Honda, the only thing more important than creating a vehicle that's fun to drive, is creating one that is ingeniously safe to drive. That's why every Accord is built with multiple safety features that have resulted in a frontal dual 5-star safety rating by the U.S. National Highway Traffic Safety Administration (NHTSA). Your safety begins with a reinforced-steel body. Add to that dual side impact beams and computer-designed crush zones in the front and rear to help absorb and redirect impact energy around the cabin. All Accords also come with a collapsible steering column, 3-point seatbelts for every seating position with



To help protect the driver and front passenger, Accord comes standard with dual-stage front airbags (SRS) that deploy at one of two rates for enhanced safety. Standard on the EX-L and V6 models, dual-stage side airbags (SRS) with passenger height and position sensors provide additional protection.



Accord's stylish exterior hides a strong, rigid safety cage designed to help protect occupants against impacts from many angles. Impact-absorbing front and rear crush zones are further strengthened by side-impact protection in the doors, roof, floor and cowl section of the unit-body frame.

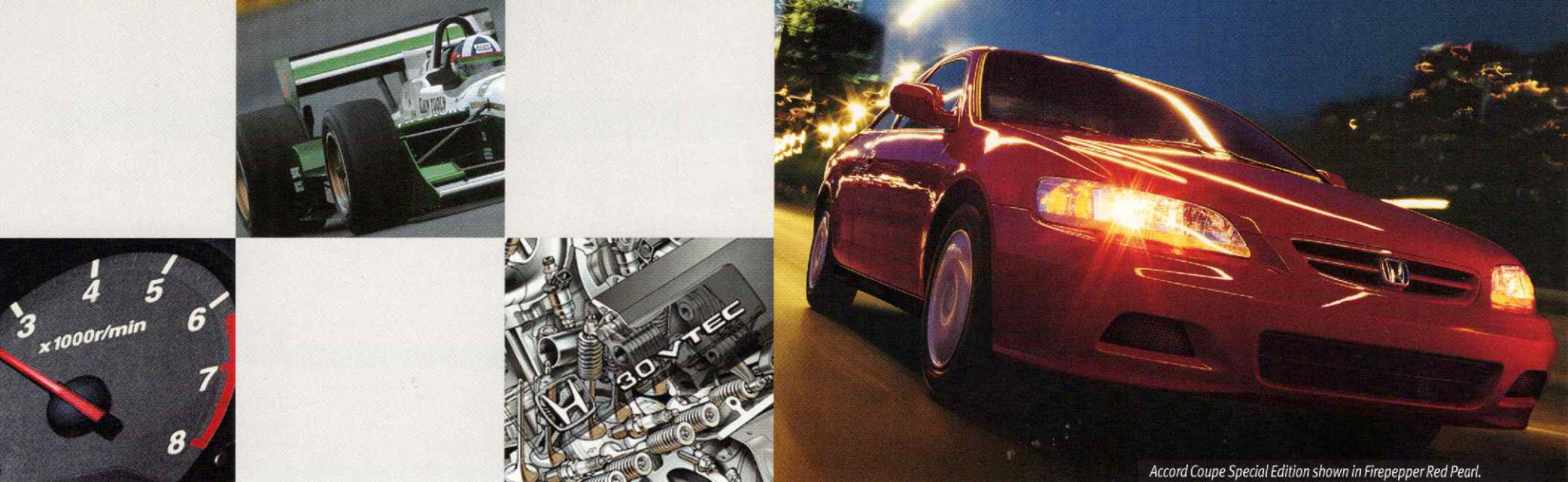


For more confidence, stability and security on the road, Accord V6 models are equipped with a Traction Control System (TCS) to assist you in maintaining traction while driving slowly on loose or slippery surfaces. The TCS monitors the speed of all four wheels. When it senses a front wheel losing traction, it applies braking to that wheel.



Accord Sedan EX-L shown in Eternal Blue Pearl.

pretensioners in the front, dual-stage front airbags (SRS) and side airbags (SRS) on all EX-L and V6 models with passenger height and positioning sensors. In the rear of the Sedan, child-seat tether anchors and an additional LATCH (Lower Anchors and Tethers for Children) System helps ensure a more secure and easier installation of compatible child seats to help keep the little ones safe. In every Accord you'll also find an Immobilizer Theft-Deterrent System that makes it virtually impossible to start the vehicle without the correct ignition key. On all Special Edition and EX models, a 4-Wheel Anti-Lock Braking System (ABS) enhances control during sudden braking.



Accord Coupe Special Edition shown in Firepepper Red Pearl.

engineering

WHAT DRIVES US IS WHAT DRIVES YOU.

One of the reasons that Honda is the largest engine manufacturer in the world is because we build every product with you in mind. We call it customer-driven engineering. It is born out of our passion for racing – a challenging spirit that has led to nine world championships over the last 30 years. And because the racetrack gives our engineers the chance to push the limits of automotive technology, we've been able to achieve numerous ingeniously engineered advances in performance, dependability and safety. Like the legendary Honda

VTEC™ (Variable valve Timing and lift Electronic Control) technology that helps deliver more power while minimizing engine stress and providing greater fuel efficiency and lower emissions. For strength and durability, advances in forged steel and aluminum alloys help reduce weight and enhance performance. Honda also leads the crusade on fuel economy and clean air by designing every 2002 vehicle to meet or beat California's stringent Low Emission Vehicle (LEV) standard.

accessories

Personalize your Accord with Genuine Honda Accessories. Each one is engineered to meet Honda's exacting standards. Ask your Dealer for the complete Genuine Accord Accessories Catalogue.

Make a bold and distinctive statement to your Accord with high-strength aluminum alloy wheels that are as durable as they are good looking.

Add the distinctive touch of gold and enhance the sleek, sophisticated styling of your Accord with the gold plated emblem kit.



Accentuate the aerodynamic styling and add a sporty flair to your Accord with a colour coordinated, factory designed rear spoiler.

Protect the rear quarter panels from mud and road debris with custom fitted rear splash guards made of injected-moulded polymers.

other available accessories ►

All-Weather Floor Mats • Cargo Net • Cassette Player • CD Changer • Leather Shift Knob • Leather Steering Wheel Cover • Nose Mask (Half and Full) Security System • Ski Sleeve • Trunk Tray • Wood-Grain Steering Wheel • Wood-Grain Trim Kit

Visit your Honda Dealer or www.honda.ca for a complete list of accessories.

specifications

ENGINE	LX SEDAN	SPECIAL EDITION SEDAN	EX-L SEDAN	SPECIAL EDITION V6 SEDAN	EX-V6 SEDAN	SPECIAL EDITION COUPE	EX-L COUPE	EX-V6 COUPE
Type: Aluminum Alloy	In-Line 4	In-Line 4	In-Line 4	V6	V6	In-Line 4	In-Line 4	V6
Displacement (cc)	2254	2254	2254	2997	2997	2254	2254	2997
Horsepower @ rpm (SAE net)	150@5700	150@5700	150@5700	200@5500	200@5500	150@5700	150@5700	200@5500
Torque (lb.-ft @ rpm)	152@4900	152@4900	152@4900	195@4700	195@4700	152@4900	152@4900	195@4700
Compression Ratio	9.3:1	9.3:1	9.3:1	9.4:1	9.4:1	9.3:1	9.3:1	9.4:1
Valve Train: SOHC	16-Valve VTEC™	16-Valve VTEC™	16-Valve VTEC™	24-Valve VTEC™	24-Valve VTEC™	16-Valve VTEC™	16-Valve VTEC™	24-Valve VTEC™
Fuel System: Programmed Fuel Injection (PGM-FI)	•	•	•	•	•	•	•	•
Ignition System: Electronic with Immobilizer	•	•	•	•	•	•	•	•
Platinum Spark Plugs	•	•	•	•	•	•	•	•

DRIVE TRAIN								
Type: Front-Wheel Drive	•	•	•	•	•	•	•	•
Manual Transmission: 5-Speed with Starter-Interlock System	•	•	•	N/A	N/A	•	•	N/A
Automatic Transmission: Electronically-Controlled 4-Speed with Lock-up Torque Converter and Grade Logic Control	Optional	Optional	Optional	•	•	Optional	Optional	•

BODY / SUSPENSION / CHASSIS								
Body Type: Unit Body	•	•	•	•	•	•	•	•
Front Suspension: Independent Double-Wishbone	•	•	•	•	•	•	•	•
Rear Suspension: Independent 5-Link Double-Wishbone with Coil Springs	•	•	•	•	•	•	•	•
Stabilizer Bars (mm, front/rear)	26.5/16.0	26.5/16.0	26.5/16.0	27.2/16.0	27.2/16.0	26.5/17.0	26.5/17.0	27.2/17.0
Steering Type: Speed Sensitive, Variable Power-Assisted Rack-and-Pinion	•	•	•	•	•	•	•	•
Turning Diameter (Curb to Curb) (m)	11.0	11.0	11.0	11.8	11.8	10.9	10.9	10.9
Brakes: Power Assisted Ventilated Front Disc/Rear Drum	•	•	•	•	•	•	•	•
Brakes: Power Assisted 4-Wheel Disc (Front Ventilated/Rear Solid)	•	•	•	•	•	•	•	•
Wheels	15" Full Covers	15" Alloy	15" Alloy	15" Alloy	15" Alloy	15" Alloy	15" Alloy	16" Alloy
Tires: All-Season Radials	P195/65R15 89H	P195/65R15 89H	P195/65R15 89H	P205/65R15 92V	P205/65R15 92V	P195/65R15 89H	P195/65R15 89H	P205/60R16 91V

EXTERIOR / INTERIOR DIMENSIONS								
Wheelbase (mm)	2715	2715	2715	2715	2715	2670	2670	2670
Length (mm)	4810	4810	4810	4810	4810	4767	4767	4767
Width (mm)	1785	1785	1785	1785	1785	1785	1785	1785
Height (mm)	1445	1445	1445	1455	1455	1395	1395	1405
Track – Front/Rear (mm)	1555/1535	1555/1535	1555/1535	1555/1535	1555/1535	1555/1535	1555/1535	1555/1535
Curb Weight (kgs) – M.T. / A.T.	1375/1405	1390/1420	1410/1440	N/A /1499	N/A /1515	1359/1390	1381/1412	N/A /1489
Front/Rear Dimensions – Headroom (mm)	1016/956	979/927	979/927	979/927	979/927	966/928	966/928	966/928
– Legroom (mm)	1070/963	1070/963	1070/963	1070/963	1070/963	1083/823	1083/823	1083/823
– Hiproom (mm)	1395/1373	1395/1373	1395/1373	1395/1373	1395/1373	1324/1171	1324/1171	1324/1171
Cargo Volume (L)	399	399	399	399	399	385	385	385
Total Interior Volume (L)	3279	3279	3279	3279	3279	2941	2941	2941
Fuel Capacity (L)	65	65	65	65	65	65	65	65
Fuel Consumption*, City/HWY (L/100km) – M.T.	9.2/6.8	9.2/6.8	9.2/6.8	N/A	N/A	9.2/6.8	9.2/6.8	N/A
– A.T.	10.2/7.1	10.2/7.1	10.2/7.1	11.6/7.8	11.6/7.8	10.2/7.1	10.2/7.1	11.6/7.8

*See Dealer for latest 2002 NRCAN and Transport Canada data.

COLOURS (EXTERIOR / INTERIOR)								
Eternal Blue Pearl/Ivory	•	•	Leather	•	Leather	•	Leather	Leather
Firepepper Red Pearl/Charcoal Grey	•	•	•	•	•	•	•	•
Firepepper Red Pearl/Quartz Grey	•	•	Leather	•	Leather	•	•	•
Naples Gold Metallic/Ivory	•	•	Leather	•	Leather	•	Leather	Leather
Nighthawk Black Pearl/Charcoal Grey	•	•	•	•	•	•	Leather	Leather
Nighthawk Black Pearl/Quartz Grey	•	•	Leather	•	Leather	•	•	•
Noble Green Pearl/Ivory	•	•	•	•	•	•	•	•
Satin Silver Metallic/Charcoal Grey	•	•	•	•	•	•	Leather	Leather
Satin Silver Metallic/Quartz Grey	•	•	Leather	•	Leather	•	•	•



Eternal Blue Pearl



Nighthawk Black Pearl



Naples Gold Metallic



Firepepper Red Pearl



Noble Green Pearl



Satin Silver Metallic

features

	LX SEDAN	SPECIAL EDITION SEDAN	EX-L SEDAN	SPECIAL EDITION V6 SEDAN	EX-V6 SEDAN	SPECIAL EDITION COUPE	EX-L COUPE	EX-V6 COUPE
EXTERIOR FEATURES								
Body-Coloured Heated Power Remote Door Mirrors	•	•	•	•	•	•	•	•
Body-Coloured Impact Absorbing Bumpers	•	•	•	•	•	•	•	•
Body-Coloured Side Body Mouldings	•	•	•	•	•			
Headlight Auto Off		•	•	•	•	•	•	•
Power Moonroof with Tilt Feature, Privacy Glass and Sunshade		•	•	•	•	•	•	•
Rear Window Defroster with Timer	•	•	•	•	•	•	•	•
Speed Synchronized Front Wipers with Variable Intermittent	•	•	•	•	•	•	•	•
Super Heat Absorbing & Rejecting Green Tinted Glass	•	•	•	•	•	•	•	•
INTERIOR FEATURES								
Adjustable Steering Column	•	•	•	•	•	•	•	•
Air Conditioning (CFC-Free) with Micron Air-Filtration	•	•	•	•	with Auto Climate Control	•	•	with Auto Climate Control
AM/FM Stereo with 6-Disc In-Dash CD Changer and Cassette Player with 6 Speakers			•		•		•	•
AM/FM Stereo with CD Player with 6 Speakers	•	with Cassette		with Cassette		with Cassette		
Audio Anti-Theft		•	•	•	•	•	•	•
Beverage Holders, Front and Rear	•	•	•	•	•	•	•	•
Centre Console Armrest with Storage Compartments	•	•	Leather	•	Leather	•	Leather	Leather
Cruise Control	•	•	•	•	•	•	•	•
Driver's Seat Adjustable Lumbar Support			•		•		•	•
Driver's Seat with 8-Way Power Adjustment			•	•	•		•	•
Driver's Seat Height Adjustment	•	•	Power	Power	Power	•	Power	Power
Dual Front Illuminated Vanity Mirrors	•	•	•	•	•	•	•	•
Floor Mats		•	•	•	•	•	•	•
Fold-Down Rear Centre Armrest with Lockable Trunk Pass-Through	•	•	•	•	•			
Fold-Down Rear Seat	•	•	•	•	•	60/40	60/40	60/40
Front Map Lights	•	•	•	•	•	•	•	•
Heated Front Seats		•	•	•	•	•	•	•
HomeLink® Garage Door Opener					•			•
Illuminated Driver's Power Window Switch	•	•	•	•	•	•	•	•
Illuminated Glove Box	•	•	•	•	•	•	•	•
Interior Trim: Metallic Finish						•	•	•
Wood Print		•	•	•	•			
Keyless Remote Entry with Trunk Release		•	•	•	•	•	•	•
Leather Trimmed Seats and Door Panel Inserts			•		•		•	•
Leather-Wrapped Steering Wheel		•	•	•	•	•	•	•
Maintenance Interval Reminder	•	•	•	•	•	•	•	•
Overhead Sunglass Storage	•	•	•	•	•	•	•	•
Passenger's Seat with 4-Way Power Adjustment					•			
Power Door Locks	•	•	•	•	•	•	•	•
Power Windows with Driver's One Touch Down	•	•	•	•	•	•	•	•
Rear Heater Ducts	•	•	•	•	•	•	•	•
Remote Fuel Filler and Trunk Release with Lock	•	•	•	•	•	•	•	•
Retained Accessory Power	•	•	•	•	•	•	•	•
Steering Wheel Mounted Audio Controls			•		•		•	•
Trunk Hook	•	•	•	•	•			
Trunk Light	•	•	•	•	•	•	•	•
Trunk Cargo Net							•	•
SAFETY								
3-Point Seatbelts in All Seating Positions	•	•	•	•	•	•	•	•
4-Wheel Anti-Lock Braking System (ABS)		•	•	•	•	•	•	•
8-Km/h Impact Absorbing Bumpers	•	•	•	•	•	•	•	•
Child Proof Rear Door Locks	•	•	•	•	•			
Child Safety Seat Anchors in All Rear Positions	with LATCH	with LATCH	with LATCH	with LATCH	with LATCH	•	•	•
Driver's and Front Passenger's Airbags (SRS)	•	•	•	•	•	•	•	•
Driver's Side Airbag (SRS)			•	•	•		•	•
ECU Immobilizer	•	•	•	•	•	•	•	•
Front Occupant Knee Bolster	•	•	•	•	•	•	•	•
Front Seatbelt Pretensioners	with Shoulder Height Adjust	with Shoulder Height Adjust	with Shoulder Height Adjust	with Shoulder Height Adjust	with Shoulder Height Adjust	•	•	•
Passenger's Side Airbag (SRS) with Smart Seat Sensors			•	•	•		•	•
Security System		•	•	•	•	•	•	•
Traction Control (TCS)				•	•			•

HONDA.
THE PLEASURE
WILL BE
ALL YOURS



The Honda No Nonsense Warranty covers all power train components in your new Honda. This includes manufacturing defects on almost everything essential to the basic operation of the vehicle. For 5 years or 100,000 km, the power train warranty also covers items from the engine block and transmission, to smaller but important items such as the water and fuel pumps as well as the drive shafts. Audio components are covered for 3 years. And your car's body is protected for 3 years against surface corrosion and for 5 years against perforation due to corrosion. Plus, we offer 100% battery coverage for the first 2 years and 50% for the third year.

HONDA Plus
EXTENDED OWNERSHIP WARRANTY
Whether you lease or purchase your vehicle, why not prolong your worry-free ownership experience even further with our flexible selection of Mechanical Coverage that extends up to 7 years or 160,000 km. We also offer the option of Roadside Assistance that provides you with emergency services such as Lock Out, Towing, Gas Delivery, Trip Interruption, Car Rental, Tire Road Hazard, and more. Honda Plus is designed, administered and backed by Honda Canada Inc., so you can count on us being there when you need us most. Just ask your Dealer for full details and how you can include Honda Plus with your vehicle purchase.



You can also protect your investment by bringing your Honda home to your Honda Dealer. Our Genuine Honda Replacement Parts are made to the exact same standards as original Honda Components and are guaranteed by our Genuine Honda Parts Warranty. Plus, they're installed by factory trained technicians who know your Honda best. So when it's time for your vehicle's regular maintenance, don't open your hood to strangers.



Start your Honda experience with Honda Future Value Leasing and enjoy the benefits of automatic GAP protection, low monthly payments, more vehicle for your money, and a closed-end lease. Or consider Honda Future Value Financing. This option to leasing offers highly competitive rates with the convenience of one-stop shopping right in the Dealership. In addition, we work together to create a plan to fit your particular budget. Contact your local Honda Dealer for further details on how Future Value Leasing or Future Value Financing* can benefit you.

*Available in all areas outside of Quebec.



Civic Sedan



Civic Coupe



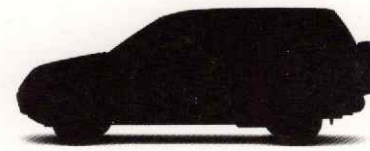
Accord Sedan



Accord Coupe



Odyssey



All new CR-V arrives Winter 2001



Insight



S2000

©2001 Honda Canada Inc., 715 Milner Avenue, Toronto, Ontario, Canada M1B 2K8

Remember Your Seatbelts. It's a Simple Fact of Life. Specifications, features, illustrations and equipment shown in this catalogue are based upon the latest available information at the time of publication. Although descriptions are believed to be correct, accuracy cannot be guaranteed. Honda Canada Inc. reserves the right to make changes at any time, without notice or obligation, in colours, specifications, accessories, materials and models. Some vehicles are shown with optional equipment. ©Homelink is a registered trademark of Prince Corporation, a Division of Johnson Controls. Accord, Civic, Odyssey, CR-V, Insight and S2000 are registered trademarks of Honda Motor Co. Ltd. For more information call 1-888-9-HONDA-9.

Printed in U.S.A. 08/01 Printed on recycled paper. 100% Chlorine Free. 7552B002E

www.honda.ca



HONDA