

1998 ODYSSEY



**HONDA**

JOHN YUNG

BUILT WITHOUT COMPROMISE. 



## MAJOR FEATURES AT A GLANCE



– ANTI-LOCK BRAKING SYSTEM (ABS)



– CFC-FREE AIR CONDITIONING



– CRUISE CONTROL



– DRIVER SIDE AIR BAG (SRS)



– PASSENGER SIDE AIR BAG (SRS)



– POWER WINDOWS



– AM/FM STEREO SYSTEM WITH CASSETTE

You need a vehicle with room to move. Yet equally important is how well it moves you. You'll find such a vehicle in the Honda Odyssey - the only minivan that benefits from Honda's racing heritage.

Since Honda's beginning, racing has fuelled our passion for engineering. It's this passion that brings Honda-powered race cars into the winner's circle. And it logically follows that a company with the technology to win at motorsports is a company with the technology to make outstanding production vehicles for everyone.

The racetrack is also a challenging training ground for Honda engineers. And because we rotate our engineers between racing and production vehicle activities, the high-performance demands of racing find their way into the development of our new products.

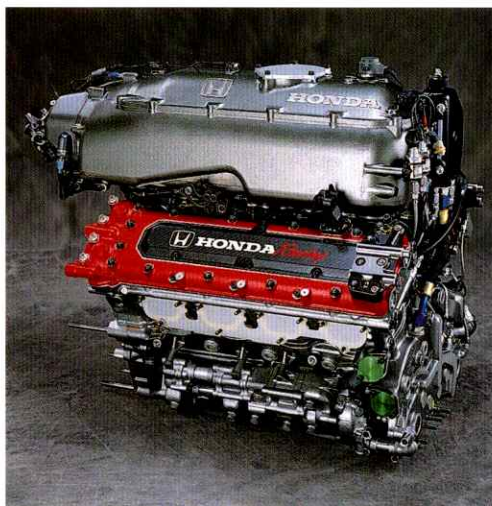


*Odyssey shown in Crystal Blue Metallic.*

BUILT TO FIT THE  
BIGGEST EXPECTATIONS

Passed down from its racing siblings, the Odyssey boasts many engineering innovations. Like the efficient, VTEC engine that maximizes usable power. And precision 4-wheel independent double-wishbone suspension which gives our minivan its unique, car-like handling.

But to fully appreciate the Odyssey's race-inspired features, you really have to drive one. And if that doesn't meet your expectations, it's only because it exceeds them.



*Honda's VTEC Racing Engine, considered by many to be the finest synthesis of power, endurance and efficiency.*



*It is Honda's commitment to racing that has brought us wins like the 1996 PPG IndyCar World Series Manufacturer's Championship, as well as six other international racing championships.*





## HOW THE WELL-TRAVELLED FAMILY TRAVELS WELL

It's the vehicle on the downtown drive, the country cruise, and the holiday getaway. The one that has room for all your passengers and cargo, yet at the same time, doesn't cramp your style. It could only be the very practical, very attractive, Honda Odyssey.

Inside, all of the instruments and controls needed for the journey are at your disposal. The cabin also features amenities like cruise control, power windows, mirrors, door locks, opening rear windows, and supportive seats to name a few.

Making the drive even more enjoyable is a high-power stereo with cassette, super heat-absorbing green tinted glass, air conditioning, and rear seat heater ducts - so your interior environment is always just right.

Safety is paramount. There's an Anti-Lock Braking System (ABS) to give you superior

stopping power. And in the event of a collision, front and rear crush zones help to protect all passengers, while dual air bags add supplemental protection.

With so many features, the Odyssey lets you adapt to almost any environment. But perhaps even more impressive is the way the Odyssey's environment adapts to you.

In the seven-passenger layout, the middle, three-passenger bench seat folds forward 50/50 for easy entry into the back. It also folds up against the front seat for more cargo room. Or, choose the six-passenger Odyssey and remove the second row (two bucket seats) to accommodate all your things.

Both models feature a unique store-in-the-floor rear seat. That means you don't have to worry about breaking your back getting it out (and back in again) or where you're going to

keep it in your home. And when it's up, it leaves a recessed compartment in the back that holds your groceries in place.

Loading groceries or anything else is never a problem with the tailgate that opens up high and out of the way. Likewise, passengers can enter and exit easily with our minivan's low step-in height. And with 4 car-like doors, rather than the heavy sliding variety, our minivan couldn't be more inviting to get into.

Clearly, the Honda Odyssey achieves a harmonious balance among function, elegance, and excitement. Proving that not all good things come in small packages.

*Odyssey interior shown in Grey. U.S. model shown.*



*Odyssey shown in Grey with a unique store-in-the-floor rear seat.*

## ODYSSEY



*Odyssey interior shown in Grey. U.S. model shown.*





## MAJOR FEATURES AT A GLANCE



ODYSSEY

## SPECIFICATIONS AND DIMENSIONS

### ODYSSEY

#### ENGINE/DRIVE TRAIN

Type: Aluminum Alloy In-Line 4	2.3L
Displacement (cc)	2254
Horsepower @ RPM (SAE net)	150 @ 5700
Torque (lb. ft. @ RPM)	152 @ 4900
Compression Ratio	9.3:1
Valve Train: SOHC 16-Valve	VTEC
Multi-Point Programmed Fuel Injection (PGM-FI)	•
Ignition System: Electronic	•
Drive System Type: Front Wheel Drive	•
Electronically Controlled 4-Speed Automatic Transmission with Lock-up Torque Converter and Grade Logic Control System	•

#### BODY/SUSPENSION/CHASSIS

Body Type: Unit body	•
Suspension: Four-wheel Independent Double-Wishbone with Coil Springs and Stabilizer Bars	•
Steering Type: Variable Assist Power Rack-and-Pinion	•
Turning Circle (m)	11.5
Power-Assisted 4-Wheel Disc Brakes (front vented/rear solid)	•
Wheels	Full Covers
Tires: All-Season Radials	205/65R15 92S

#### EXTERIOR/INTERIOR DIMENSIONS

Wheelbase (mm)	2830
Length (mm)	4765
Width (mm)	1792
Height (mm)	1642
Track - Front/Rear (mm)	1524/1545
Curb Weight (Kgs)	- 6-passenger - 7-passenger
Front	- Headroom (mm) - Legroom (mm) - Hiproom (mm)
Headroom	- 2nd Row/3rd Row (mm)
Legroom	- 2nd Row/3rd Row (mm)
Hiproom	- 2nd Row/3rd Row (mm)
Cargo Volume (Litres)	- 3rd Row Folded - 3rd & 2nd Row Folded (7-passenger) - 3rd Row Folded; 2nd Row Removed (6-passenger) - Behind 3rd Row (well only)
Total Interior Volume (Litres)	4327

## ADDITIONAL FEATURES AND STANDARD EQUIPMENT

### ODYSSEY

#### INTERIOR FEATURES

Anti-Theft Immobilizer System	•
Adjustable Steering Column	•
Maintenance Interval Reminder	•
Digital Quartz Clock	•
Tachometer	•
Resettable Trip Odometer	•
Remote Fuel-Filler Door Release	•
Cargo Area Light	•
Floor Console with Storage	•
Driver's and Front Passenger's Seat Armrest	•
2nd Row Centre Armrest (7-passenger)	•
Fully Reclining Front Bucket Seats	•
2nd Row Fully Reclining Removable Captain Chairs with Armrests (6-passenger)	•
2nd Row Seat - 50/50 Split Folding Bench (7-passenger)	•
3rd Row Seat - Retractable Folding Bench	•
Adjustable Seat Headrests on all Outboard Seating Positions	•
Children's Safety-Seat Anchors	•
2nd and 3rd Row Seat Grab Rail	•
Child-Proof Rear Door Locks	•
Front 2-Speed Wipers with variable intermittent settings	•
Rear Wiper/Washer	•
Adjustable Front Seatbelt Anchors	•
Beverage Holders	6
Driver Vanity Mirror	•
Passenger Vanity Mirror	Illuminated
Rear Window Defroster	•
Rear Seat Heater Ducts	•
Security System Pre-Wire	•

#### EXTERIOR FEATURES

Super Heat-Absorbing Green Tinted Glass	•
Dual Power-Operated Mirrors	•
Front Mud Guards	•
Protective Body Side Mouldings	•
8-km/h Body-Coloured Impact-Absorbing Bumpers	•
Body-Coloured Tailgate Spoiler	•
Four Swing-Out Doors	•
Rear Bumper Step	•
Fuel Capacity (Litres)	65

Fuel Consumption, City/Highway Please see your Dealer for latest Transport Canada data.

Some models shown with optional equipment. See your Dealer for details.

## 1998 ODYSSEY COLOURS

**Exterior/Interior Colours** • Heather Mist Metallic/Beige • Black Currant Pearl/Seagull Grey • Eucalyptus Green Pearl/Fern • Mystic Blue Pearl/Seagull Grey • Crystal Blue Metallic/Seagull Grey



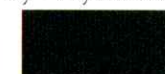
Heather Mist  
Metallic



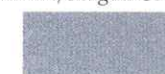
Black Currant  
Pearl



Eucalyptus  
Green Pearl



Mystic Blue  
Pearl



Crystal Blue  
Metallic



**ODYSSEY  
ACCESSORIES**



*The Odyssey's fog lights improve visibility in foul weather.*



*Power any 12-volt accessory from the rear of your Odyssey with the rear power outlet.*



*Keep loose cargo and groceries nice and tight with Odyssey's cargo net.*



*With the Odyssey's rugged, high-quality roof rack, there's more room on the roof for bikes, skis, or extra luggage.*

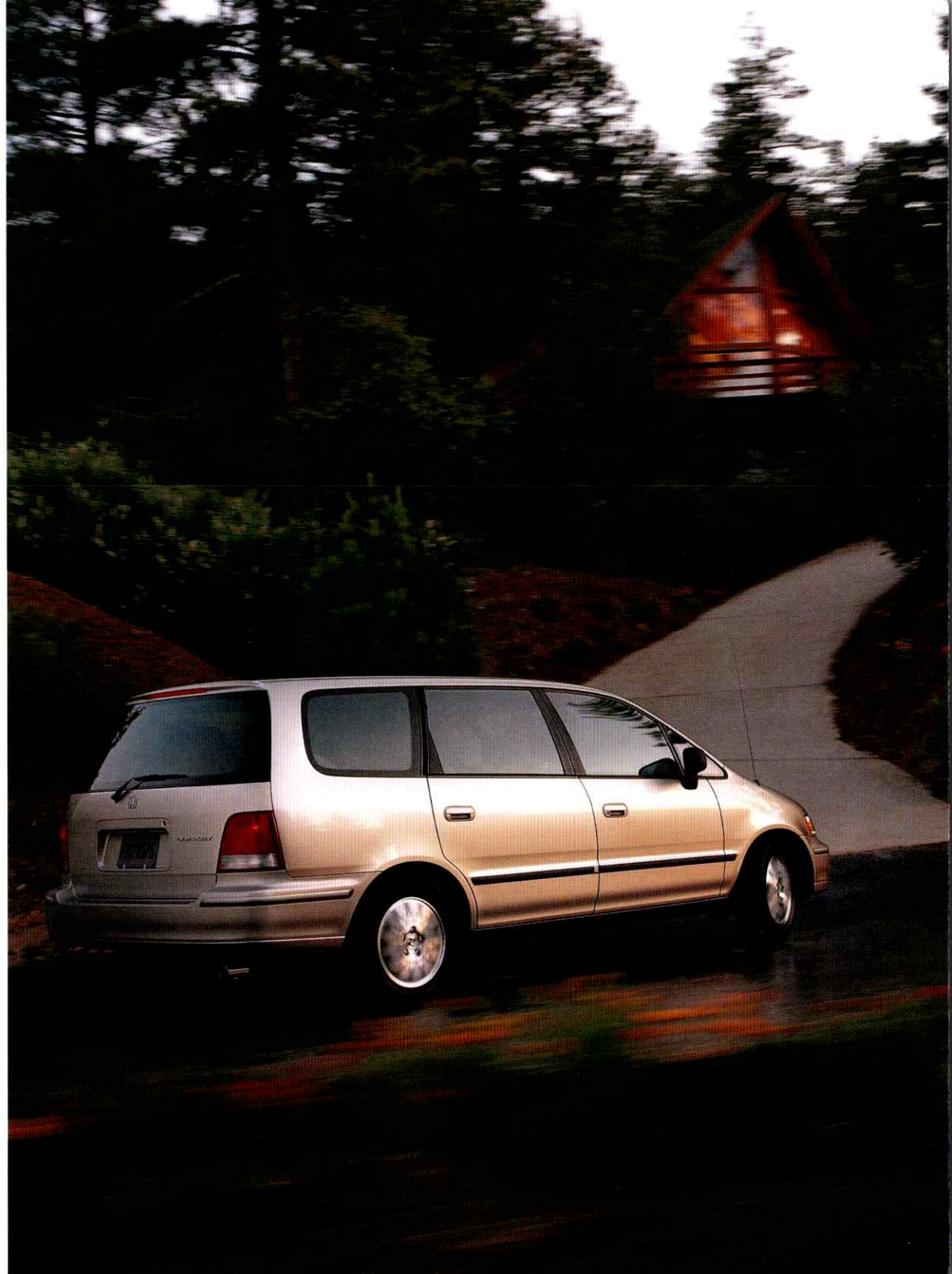


*15" Alloy Wheels are machine-finished and will get your Odyssey more than a few envious looks.*

*Your new Odyssey comes pre-wired for a Genuine Honda Security System. Your Honda Dealer can have it installed and ready to go when you pick up your new Odyssey. The system features a remote activation system, keyless entry and much more. Ask your Dealer for details.*



*Odyssey shown in Heather Mist Metallic.*



**HONDA.  
THE PLEASURE  
WILL BE  
ALL YOURS.**

All major components in your new Honda are covered by the Honda No Small Print Warranty. This includes manufacturing defects on almost everything essential to the basic operation of the vehicle.



The warranty also protects many other items on your new Honda for 5 years or 100,000 kilometres. Your vehicle is covered from the engine block, radiator and transmission, to little things like the switches for the headlights, ignition and windshield wipers. Your car's body, which protects your body, is protected for 3 years against surface corrosion and for 5 years against perforation due to corrosion.

The battery is 100% covered for two years and 50% for the third year. And let's not forget your audio components; they're protected for three years.

As a new Honda owner, you can prolong your worry-free pleasure even further. Just choose from our flexible



selection of Mechanical Coverages that extends up to 7 years or 160,000 kilometres, whichever comes first. We also offer the option of Roadside Assistance that provides you with Emergency Services : Lock Out, Towing, Gas Delivery, Trip Interruption, Trip Planner, Car Rental, Tire Road Hazard, etc. Ask your Dealer for full details on our Mechanical and Roadside Assistance coverage(s).

Remember, only Honda Plus is designed, administered and backed by Honda Canada Inc. So you can count on us being there.

So, why not protect your investment and budget by asking your Dealer how you can include Honda Plus with your vehicle purchase.

The same can be said for the Genuine Honda Replacement Parts, which are made to the exact same standards and are also guaranteed by our Genuine Honda Parts Warranty.

All replacement components are made for a perfect fit to help keep your Honda a Honda.

All our technicians are factory

trained to know your Honda inside and out. So when it's time for your car's check-up, don't open your hood to strangers.

Bring your Honda back home to your Honda Dealer for the best in after-sale service and Genuine Honda Parts. Your vehicle couldn't be in better hands.

Honda Future Value Leasing. The benefits are clear: automatic GAP protection; low monthly payments; more vehicle for your money; and a closed end lease. Ask your Dealer for a Honda Future Value Lease brochure which explains these benefits in greater detail.

Honda Future Value Financing. This option to leasing offers highly competitive rates with the convenience of one-stop shopping right in the Dealership. In addition, we work together to create a plan to fit your particular budget.

Contact your local Honda Dealer for further details on how Future Value Leasing or Future Value Financing can benefit you.

©1997 Honda Canada Inc., 715 Milner Avenue, Scarborough, Ontario, Canada M1B 2K8

Remember Your Seatbelts. It's a Simple Fact of Life.

All information stated in this catalogue is believed to be accurate at the time of printing. Availability, specifications, materials and colours are subject to change without notice. While every care is taken to accurately reproduce colours, due to limitations of printing processes, colours rendered in the catalogue may not faithfully represent true colours on models. Certain items shown are Dealer options, installed at extra cost.



**BUILT WITHOUT COMPROMISE.**

