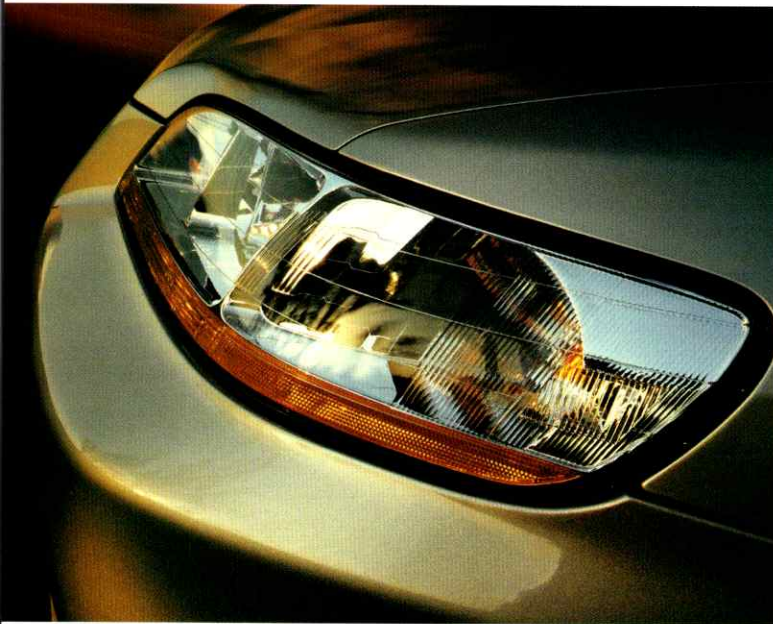


1998 HONDA ALL-LINE



**HONDA**

BUILT WITHOUT COMPROMISE. 



Behind every Honda car stands the Honda philosophy, 'to build vehicles of the highest quality and value in the countries where they are sold.' This commitment is embodied at our plant in Alliston, Ontario - where Honda associates' dedication and expertise rate them among the best car builders in the world.

Each new Honda also benefits from our extensive racing heritage. From our company's earliest days, we've been involved in motorsports. And the lessons we learn competing, translate to the Honda parked in your driveway.

When building quality vehicles, we never lose sight of quality of life. Which is why we are committed to developing

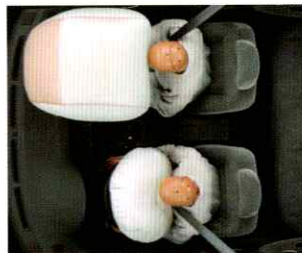


**HONDA PHILOSOPHY.**  
**BUILT WITHOUT COMPROMISE.**

environmentally-friendly technologies. Among the breakthroughs this year, you'll find low-emission engines that don't sacrifice performance in both the Accord and Civic. And we are always seeking alternate power sources for tomorrow's Hondas.

Our respect for people and their needs can also be measured by the safety we build into our vehicles. Front and rear crush zones, dual air bags, sturdy steel door beams, and a reinforced body are all there to help provide maximum protection.

At Honda, we go to great lengths to exceed your expectations. Which is just one more reason why Honda owners come back to us time and time again.



*Dual front airbags inflate and deflate in a fraction of a second to help provide protection upon a severe frontal impact, but for maximum protection, always wear your seat belt. (Standard on all Hondas except Civic Hatchback CX which has driver's side airbag.)*



*The anti-lock braking system (ABS) helps the driver retain steering control when braking hard, especially on slippery surfaces.*





AT HONDA,  
THIS IS A CLASSROOM



*Honda's VTEC Racing Engine, considered by many to be the finest synthesis of power, endurance and efficiency.*

The racetrack. It's where our passion for engineering is fuelled and where Honda-powered race cars are driven to victory. And it logically follows that a company with the technology to win at motorsports is one with the technology to get the most performance out of their production vehicles.

For Honda engineers, there's no better training ground than the track. Racing is something that gives immediate feedback: the car performs or it doesn't. This puts engineers under tremendous pressure to overcome fantastic challenges inside very short time frames. These skills are invaluable to us. That's why we rotate



engineers regularly between racing and production car activities. Thus, the same spirit of challenge that goes into racing finds its way into the development of new, innovative products.

Like our race cars, each new Honda has a light aluminum-alloy engine block and cylinder head, plus an efficient 4-valve combustion chamber. Not to mention Honda's legendary double-wishbone suspension system. And, in our high-performance vehicles, the race-bred VTEC engine.

You could say that each Honda benefits from our fast thinking. And a simple test drive will convince you that our engineers have done their homework.



*It is Honda's commitment to racing that has brought us wins like the 1996 PPG IndyCar World Series Manufacturer's Championship, as well as six other international racing championships.*







# ACCORD SEDAN

## WELCOME TO A MOVING EXPERIENCE

Take all the qualities people love most about their Accord Sedans. Then turn the dial way up. That is the Accord Sedan for 1998. A car with more room and power, sophisticated styling, and standard equipment than ever before.

With four models to choose from, the Accord Sedan allows for a very personalized fit. The 135-hp DX offers superb value with its economical 16-valve engine. Or consider the well-appointed, 150-hp VTEC LX or refined EX with a choice of powerful 150-hp and 200-hp VTEC engines.

The chassis reflects Honda's suspension design philosophy: build an automobile with responsive handling and stability, without sacrificing ride quality. Its

advanced 5-link rear and re-engineered front double-wishbone suspension provides independent action to give the Accord a smooth ride over virtually any road.

The Accord's new body structure also provides greater rigidity, to function as a strong, stable platform for the improved suspension. And additional sound-absorbing materials make this the quietest Accord ride yet.

Safety features include dual air bags, front and rear 3-point seatbelts and front crush zones that help absorb full-frontal and offset-frontal impacts. In addition, rear crush zones help protect against rear impact and the passenger compartment is reinforced against side impacts.











THE BOND BETWEEN COMFORT  
AND PERFORMANCE IS SEAMLESS



Part of the new Accord's appeal is its inspired use of space. Honda engineers have added more room for passengers and a larger trunk. New instrument controls offer greater accessibility.

In addition to power windows, mirrors and door locks (standard on the LX and EX), you'll find cruise control and CFC-free air conditioning standard on all models. Automatic climate control is also featured on the EX-V6. And all EX models boast a moonroof and a CD player (with wheel-mounted audio controls on the EX-V6 model). Included in the DX and LX is a high-power stereo with cassette.

The peaceful ride is enhanced by peace of mind. All models feature child-proof rear door locks and an immobilizer theft-deterrent system.

*Accord Sedan EX-V6 shown in Ivory with leather trim.*



## ACCORD COUPE

EVEN STANDING STILL,  
IT SETS THE HEART RACING



*Accord Coupe EX-V6 interior shown in Classy Grey leather trim.  
U.S. model shown.*



The 1998 Accord Coupe is one of the most original performance cars Honda has ever produced. Its fluid elegance tells you, this is no "two-door sedan". And yet, its spaciousness and amenities say uncompromised comfort.

All three versions feature Honda's latest VTEC engine technology for a superb new level of power and efficiency. The LX and EX have the 150-hp VTEC four-cylinder engine, coupled with a crisp 5-speed standard transmission. The EX-V6 delivers 200-hp of VTEC responsiveness, and comes with a smooth 4-speed automatic transmission with Grade Logic programming (optional on four-cylinder LX and EX models) which makes shifting smoother on steep grades.

In tune with this new technology is an advanced 5-link rear and re-engineered front double-wishbone suspension - making the new Accord Coupe such an agile performer, you'd swear it had a pulse of its own.

*Accord Coupe EX-V6 shown in Flamenco Black Pearl. Available late fall 1997.*







## CIVIC SEDAN

EVERY TURN OF THE ENGINE  
IS A FRESH START

Nothing puts you in control like the very real, very stylish Honda Civic. Turn on the ignition and, suddenly, you're steering life in any direction you want to take it. You're in full command of a powerful, high-performance engine. And it's quick. Just the way you like it. The Civic is also great-looking. Unique, some people might say. Its spacious, ergonomically-designed cabin is as comfortable as a car can get for both passengers and driver. And it's remarkably quiet. Then again, it's a Honda. Which means quality and reliability at every turn. So grab the wheel and leave the world behind. It's time to forge ahead with the control and confidence of a Honda Civic.



Civic Sedan EX interior shown in Grey with automatic transmission, optional CFC-free air conditioning, keyless entry, CD player, and security system. U.S. model shown.









# CIVIC COUPE

IT'S THE POWER TO TAKE  
ANY DIRECTION YOU CHOOSE

No matter where you're going in life, the sporty, Civic Coupe will make it a pleasure getting there. So you can relax, we made the vehicle body extremely rigid. This contributes to the safety of the car while also delivering exceptional handling and ride comfort. Making the ride even smoother, there's the 4-wheel independent double-wishbone suspension that keeps tires more fully in contact with the road to help provide excellent control. Add to this the sound-dampening materials we build into the body, and it's one remarkably peaceful ride.

"Thrill" also describes the experience. And it's where the Coupe Si excels. Not only does it feature a race-bred VTEC engine, but also, an exhilarating moonroof with tilt feature to open you up to all the excitement you can handle. While you're feeling completely uninhibited, you may feel like cranking up the high-power stereo with cassette and six speakers.

You'll feel confident too, with the knowledge that everything you need is within reach. Everything from the thoughtfully-placed controls and amenities to perhaps, your own goals.



Steering wheel mounted cruise control (Si) allows you to stretch out your legs on long road trips. Twin beverage holder is standard.





# CIVIC HATCHBACK

## A VERY ACCOMMODATING INTERIOR

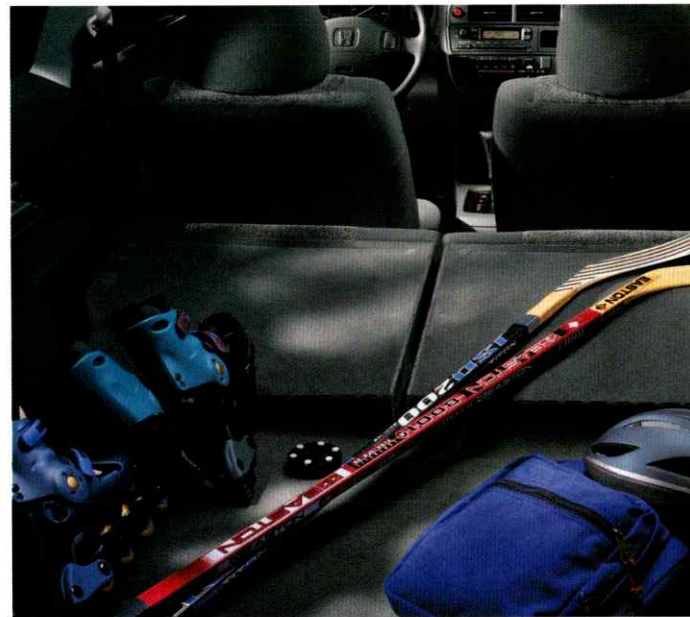
You're determined to make life fun. You're headed for adventure, no matter where you go. So, you could only be travelling in the Civic Hatchback.

Inside, there are reclining front seatbacks, adjustable head restraints, an adjustable steering column and dual vanity mirrors on the DX. So all passengers get the special attention they deserve.

For your cargo, there's the spacious hatch that holds the bulkiest of boxes. Plus, a 50/50 split fold-down rear seatback, and a coin box.

Add to this a powerful yet fuel-efficient engine and our legendary suspension system, and you're ready for the journey.

So you see, it's possible to steer your life in a whole new direction. Especially in a car as liberating and original as the Civic Hatchback.



*Civic Hatchback interior shown in Grey with automatic transmission.*





# PRELUDE

THE MARK OF A CHAMPION  
IS ELEGANCE, WHETHER IN A HUMAN,  
AN ANIMAL OR AN AUTOMOBILE

As the hottest-performing sports coupe in its class, the new Prelude will ignite your passion for driving.

With its 195-horsepower, VTEC engine and available Sequential SportShift, you'll long for a stretch of twisting highway. And you'll truly embrace it with the sure-grip of four-wheel independent double-wishbone suspension plus front and rear stabilizer bars. For the ultimate in handling, there's also the Prelude Type SH. Equipped with Honda's unique Active Torque Transfer System (ATTS), it provides the controlled feel

of a well-balanced performance car. Prelude also has a quiet, even elegant side for those calmer moments. There are amenities like a high-efficiency CFC-free air conditioning system, a moonroof, cruise control, and power windows, mirrors, and door locks. Plus, an anti-theft immobilizer to help ensure that you, and only you, get to take it for a joy ride.

The Honda Prelude was created to let the pleasures of the road unfold endlessly before you. And to make every drive, a promise fulfilled.



*The Sequential SportShift 4-speed automatic transmission gives you the driving convenience and versatility of an automatic transmission with the shift-it-yourself fun and performance of a manual transmission.*

*Prelude Type SH shown in San Marino Red.*











# ODYSSEY

## HOW THE WELL-TRAVELLED FAMILY TRAVELS WELL

It's the vehicle that has room for all your passengers and cargo, yet at the same time, doesn't cramp your style. And with its car-like handling and quick acceleration, it could only be the unique Honda Odyssey.

With features like air conditioning, super heat-absorbing green tinted glass, cruise control, and power windows, mirrors and door locks, the Odyssey lets you adapt to almost any environment. But perhaps even more impressive is the way the Odyssey's environment adapts to you.

In both the six and seven-passenger layouts, you'll find a variety of compartments and loading arrangements to fit everything in place. Plus, a store-in-the-floor third-row seat so there's no heavy lifting for extra space.

Loading is never a problem with a tailgate that opens up high and out of the way. And with 4 convenient, car-like doors, the Honda Odyssey couldn't be more inviting to get into.



*Odyssey interior shown in Grey. U.S. model shown.*



*Odyssey shown in Grey with a unique store-in-the-floor rear seat.*





# CR-V

## FOR THOSE IN SEARCH OF WIDE OPEN SPACES

If you refuse to compromise when it comes to roads travelled and personal space, you'll appreciate the CR-V in a big way.

Inside the CR-V LX and the new EX, roominess and amenities must be witnessed to be believed. Your tour will take in everything from the walk-through front seating, to a wet locker, to a removable picnic table.

Engineering marvels abound as standard equipment. Like a 4-speed automatic transmission with Grade Logic Control for smoother shifting on steep grades. And "RealTime™" 4WD that changes from front-wheel to all-wheel drive automatically... giving you confident handling when the road becomes steep or slippery. All powered by a bulldog tough, fuel-friendly and very torque-y 16-valve engine.

With its 4-wheel independent double-wishbone suspension, the CR-V delivers a ride so quiet and comfortable it feels more like a sports car than a sport-ute.

The CR-V EX adds remote keyless entry, a CD player, body coloured power outside mirrors, alloy wheels and more. The CR-V is truly built to go wherever your heart takes you. With plenty left over to satisfy your mind as well.



*RealTime™ 4WD automatically engages whenever the CR-V encounters limited traction surfaces like mud or snow.*



*Beneath the removable picnic table is a waterproof bucket, usable for anything from a wet locker to an ice cooler.*





FINALLY, AUTOMOBILE  
ENGINES THAT INCLUDE  
AIR FRESHENERS





In Honda's corporate philosophy, we stress the need for our vehicles to harmonize with nature. Our new Low Emission Vehicles (LEV) are the latest step on this continuing path.

LEV is an engine technology that is now found in the all-new 1998 Accord LX and EX and in the 1998 Civic CX, DX, LX, EX, and Coupe DX. These engines are designed to meet California's extremely strict Low-Emission Vehicle standard, which is 70% cleaner than current Canadian standards (for emissions of non-methane organic gases).

Furthermore, these Civics and Accords are the first gasoline-powered cars to achieve such a feat in Canada. And they do so without compromising performance, drivability or fuel economy.

Honda's tradition of clean air standards stretches back over 20 years to our CVCC engine. This engine was the first of its kind to meet the strict requirements of the 1970 U.S. Clean Air Act. And it set a fine example for the rest of the world.

Beyond gasoline-powered engines, Honda continues to pursue the development of

cleaner, alternative power sources. One such example is our high-tech solar car that competed at the 1996 World Solar Challenge in Australia. In that race, this two-person solar vehicle, smashed its own 1993 world record by more than two hours.

With even more alternative power sources and technologies on the horizon, we will continue to balance your desire for performance with the need for less pollution and lower fuel consumption. And while our vehicles may change over the years, our commitment never will.



HONDA.

WE'LL MAKE YOU FEEL  
RIGHT AT HOME

North America is not just a place where we sell our cars. For many years now, our teams of associates on this continent have been true partners in the way Honda automobiles are conceived, designed and ultimately manufactured. In fact, a full 90% of Hondas sold here are now built in North America.

Our Alliston, Ontario plant is a shining testament to the success of this approach. On July 21, 1997, the millionth Honda rolled off the Alliston production line,

proving that Canada could produce a high-calibre, world-class car, second to none in quality. What's more, this plant more than tripled its original target of 40,000 cars a year to a whopping 150,000.

While much of the credit for these quality Honda cars goes to the technically-advanced systems, we applaud the hard-working men and women who build them day in, day out. Because just as important as *what makes a Honda is who makes a Honda*.

Today, our Canadian associates number





over 2,000 nationwide. We have become highly involved partners and active participants in communities across Canada. We even sponsor national charitable organizations as well as community activities nationwide.

We're extremely proud of the team spirit found in all of our associates. This coming together of great people and great ideas is what Honda is all about.



## KEY FEATURES OF 1998 MODELS

	SEDAN			CIVIC COUPE	HATCHBACK			SEDAN LX
	LX	EX	DX	Si	CX	DX	DX	LX
<b>ENGINE/DRIVE TRAIN</b>								
Type: Aluminum Alloy	1.6L	1.6L	1.6L	1.6L	1.6L	1.6L	2.3L	2.3L
Displacement (cc)	1590	1590	1590	1590	1590	1590	2254	2254
Horsepower @ RPM (SAE net)	106 @ 6200	106 @ 6200	106 @ 6200	127 @ 6600	106 @ 6200	106 @ 6200	135 @ 5400	150 @ 5700
Torque (lb. ft. @ RPM)	103 @ 4600	103 @ 4600	103 @ 4600	107 @ 5500	103 @ 4600	103 @ 4600	145 @ 4700	152 @ 4900
Valve Train: 16-Valve	*	*	*	VTEC	*	*	*	VTEC
Valve Train: 24-Valve								
Sequential Multi-Point Fuel Injection (PGM-FI)	*	*	*	*	*	*	*	*
Ignition System: Electronic	*	*	*	*	*	*	*	*
Drive System Type: Front Wheel Drive	*	*	*	*	*	*	*	*
5-Speed Manual Transmission	*	*	*	*	*	*	*	*
Electronically Controlled 4-Speed Automatic Transmission with Lock-up Torque Converter and Grade Logic Control System	Available	Available	Available	Available	Available	Available	Available	Available
<b>BODY/SUSPENSION/CHASSIS</b>								
Body Type: Unit Body	*	*	*	*	*	*	*	*
Suspension: Four-Wheel Independent Double-Wishbone with Coil Springs	*	Front Stabilizer Bar	*	Front Stabilizer Bar	*	*		
Suspension: Independent Double-Wishbone (front) and Independent Multi-Link Double-Wishbone (rear) with Coil Springs and Front Stabilizer Bar							*	Incl. Rear Stabilizer Bar
Steering Type: Variable Power Assisted Rack-and-Pinion	*	*	*	*	Auto only	*	*	*
Brakes: Power-Assisted Ventilated Front Disk/Rear Drum	*	*	*	*	*	*	*	*
Brakes: Power-Assisted 4-Wheel Disc (Front Ventilated/Rear Solid Disc)								
Anti-Lock Braking System (ABS)	G.O.P.	G.O.P.	G.O.P.	G.O.P.				
Wheels	8-Spoke Covers	6-Spoke Covers	8-Spoke Covers	6-Spoke Covers	Steel w/centre cap	8-Spoke Covers	Full Covers	Full Covers
Tire: All-Season Radials	P185/65R14 85S	P185/65R14 85S	P185/65R14 85S	P185/65R14 85S	P185/65R14 85S	P185/65R14 85S	195/70R14 90S	195/65R15 89H
<b>EXTERIOR/INTERIOR DIMENSIONS</b>								
Wheelbase (mm)	2620	2620	2620	2620	2620	2620	2715	2715
Length (mm)	4450	4450	4450	4450	4180	4180	4795	4795
Width (mm)	1705	1705	1705	1705	1705	1705	1785	1785
Height (mm)	1390	1390	1375	1375	1375	1375	1445	1445
Track - Front/Rear (mm)	1475/1475	1475/1475	1475/1475	1475/1475	1475/1475	1475/1475	1555/1535	1555/1535
Curb Weight (Kgs) (MT/AT)	1060/1083	1084/1107	1064/1084	1117/1137	1037/1067	1052/1075	1310/1340	1355/1385
Headroom - Front/Rear (mm)	1011/955	1011/955	986/920	986/920	986/945	986/945	1016/956	1016/956
Legroom - Front/Rear (mm)	1085/866	1085/866	1085/866	1085/866	1085/866	1085/866	1070/962	1070/962
Hiproom - Front/Rear (mm)	1270/1252	1270/1252	1270/1252	1270/1252	1270/1252	1270/1252	1395/1373	1395/1373
Cargo Volume (Litres)	338	338	338	338	379	379	399	399
Passenger Compartment Volume (Litres)	2544	2544	2412	2412	2439	2439	2880	2880

**GROUP OPTION PACKAGE (G.O.P.):** Available on all Civic Sedans and Coupes. Includes Anti-Lock Braking System (ABS) and CFC-Free Air Conditioning. 1998 CR-V available Spring 1998. Some models shown with optional equipment. See your Dealer for details.

ACCORD					PRELUDE		ODYSSEY		CR-V	
COUPE										
EX	EX V6	LX	EX	EX V6	PRELUDE	TYPE SH		LX	EX	
2.3L	3.0L V6	2.3L	2.3L	3.0L V6	2.2L	2.2L	2.3L	2.0L	2.0L	
2254	2997	2254	2254	2997	2157	2157	2254	1972	1972	
150 @ 5700	200 @ 5500	150 @ 5700	150 @ 5700	200 @ 5500	195 @ 7000 MT 190 @ 6600 AT	195 @ 7000 MT N/A	150 @ 5600	126 @ 5400	126 @ 5400	
152 @ 4900 VTEC	195 @ 4700	152 @ 4900 VTEC	152 @ 4900 VTEC	195 @ 4700	156 @ 5250 DOHC VTEC	156 @ 5250 DOHC VTEC	152 @ 4700 VTEC	133 @ 4300 DOHC	133 @ 4300 DOHC	
	VTEC			VTEC						
•	•	•	•	•	•	•	•	•	•	
•	•	•	•	•	•	•	•	•	•	
•	•	•	•	•	•	w/ATTS	•	RealTime™ All Wheel Drive	RealTime™ All Wheel Drive	
•	N/A	•	•	N/A	•	•	N/A	•	N/A	
Available	•	Available	Available	•	Available w/sequential sport shift		•	Available	•	
•	•	•	•	•	•	•	•	•	•	
					Front and Rear Stabilizer Bars	Front and Rear Stabilizer Bars	Front and Rear Stabilizer Bars	Front and Rear Stabilizer Bars	Front and Rear Stabilizer Bars	
Incl. Rear Stabilizer Bar	Incl. Rear Stabilizer Bar	Incl. Rear Stabilizer Bar	Incl. Rear Stabilizer Bar	Incl. Rear Stabilizer Bar						
•	•	•	•	•	•	•	•	•	•	
		•						•	•	
•	•		•	•	•	•	•			
•	•		•	•	•	•	•	•	•	
15" Alloy	15" Alloy	Full Covers	15" Alloy	16" Alloy	16" Alloy	16" Alloy	Full Covers	Styled Steel w/Centre Cap	15" Alloy	
195/65R15 89H	205/65R15 92V	195/65R15 89H	195/65R15 89H	205/60R16 91V	205/50R16 87V	205/50R16 87V	205/65R15 92S	205/70R15 95S	205/70R15 95S	
2715	2715	2670	2670	2670	2585	2585	2830	2620	2620	
4795	4795	4745	4745	4745	4522	4522	4765	4510	4510	
1785	1785	1785	1785	1785	1752	1752	1792	1750	1750	
1445	1455	1400	1400	1400	1315	1315	1642	1674	1674	
1555/1535	1555/1535	1554/1534	1554/1534	1554/1534	1525/1515	1525/1515	1524/1545	1535/1535	1535/1535	
1370/1400	N/A/1490	1345/1375	1365/1390	N/A/1480	1340/1365	1380/N/A	1565 - 6-passenger 1575 - 7-passenger	N/A/1397	N/A/1397	
979/927	979/927	1009/926	964/926	964/926	946/897	946/897	1018/997/954	1029/996	1029/996	
1070/962	1070/962	1081/822	1081/822	1081/822	1092/713	1092/713	1035/1020/866	1054/932	1054/932	
1395/1373	1395/1373	1323/1172	1323/1172	1323/1172	1324/1042	1324/1042	1355/1350/1041	1356/1288	1356/1288	
399	399	385	385	385	246	246	1300 - 3 <sup>rd</sup> row folded	837	837	
2784	2784	2625	2556	2556	2218	2218	4327	3610	3610	



## FEATURES AND STANDARD EQUIPMENT

	SEDAN			CIVIC COUPE	HATCHBACK			SEDAN
	LX	EX	DX	Si	CX	DX	DX	LX
<b>INTERIOR FEATURES</b>								
CFC-Free Air Conditioning	G.O.P.	G.O.P.	G.O.P.	G.O.P.	Accessory	Accessory	*	*
Cruise Control		*		*			*	*
Driver's Side Air Bag (SRS)	*	*	*	*	*	*	*	*
Passenger's Side Air Bag (SRS)	*	*	*	*		*	*	*
Leather Trim Interior								
Power Windows		*		*				*
Adjustable Power Driver's Seat (8-way)								
Adjustable Power Driver's Seat Height (2-way)								Manual
AM/FM Electronically Tuned Stereo	*	with Cassette	*	with Cassette	*	*	with Cassette	with Cassette
Power Moonroof				*				
Wood Print Interior Trim								
Adjustable Steering Column	*	*	*	*	*	*	*	*
Power Door Locks		*		*				2-stage
Tachometer		*		*		*	*	*
Remote Fuel Door/Trunk Release	*	*	*	*	*	*	*	*
Trunk/Cargo Area Light	*	*	*	*			*	*
Centre Console with Storage and Armrest	Accessory	*	Accessory	*	Accessory	Accessory	*	*
Rear Seat Armrest with Pass-Through								Lockable
Fold-Down Rear Seat Back	60/40	60/40	60/40	60/40	50/50	50/50	*	*
Children's Safety Seat Anchors	*	*	*	*	*	*	*	*
Child-Proof Rear Door Locks	*	*	N/A	N/A	N/A	N/A	*	*
2-Speed Wipers with Intermittent Settings	*	*	*	*	*	*	*	Variable Speed Synchronized
Adjustable Driver's Lumbar Support								
Adjustable Front Seatbelt Anchors	*	*					*	*
3-Point Rear Seatbelts	x2	x2	x2	x2	x2	x2	x3	x3
Front Map Lights								*
Driver Vanity Mirror	*	*	*	*		*	*	Illuminated
Passenger Vanity Mirror	*	*	*	*	*	*	*	Illuminated
Rear Seat Heater Ducts	*	*	*	*			*	*
Anti-Theft Immobilizer							*	*
Theft Deterrent System								
<b>EXTERIOR FEATURES</b>								
Rear Spoiler	Accessory	Accessory	Accessory	Accessory	*	Body-Coloured	Accessory	Accessory
Green Tinted Glass	*	*	*	*	*	*	Heat-Absorbing	Heat-Absorbing
Dual Remote Mirrors	*	Power	*	Power/Body-Coloured	*	*	*	Heated/Power/Body-Coloured
Trailer Hitch Pre-Wire							*	*
Protective Body-Side Moulding	*	Body-Coloured	*	*	*	*	*	*
Rear Wiper/Washer					*	*	*	*
8-km/h Body-Coloured Impact-Absorbing Bumpers	*	*	*	*	*	*	*	*
Fuel Capacity (Litres)	45	45	45	45	45	45	64.8	64.8

Fuel Consumption See your Dealer for latest Transport Canada data.

**GROUP OPTION PACKAGE (G.O.P.):** Available on all Civic Sedans and Coupes. Includes Anti-Lock Braking System (ABS) and CFC-Free Air Conditioning. 1998 CR-V available Spring 1998. \*Armrest available on CR-V LX model with automatic transmission. Some models shown with optional equipment.

ACCORD			PRELUDE			ODYSSEY		CR-V	
COUPE									
EX	EX V6	LX	EX	EX V6	PRELUDE	TYPE SH		LX	EX
•	Climate Control	•	•	Climate Control	•	•	•	•	•
•	•	•	•	•	•	•	•	•	•
•	•	•	•	•	•	•	•	•	•
•	•	•	•	•	•	•	•	•	•
•	•	•	•	•	•	•	•	•	•
•	Heated	•	•	Heated	•	•	•	•	•
•	Manual	•	•	Manual	Manual	Manual	•	Manual	Manual
with CD Player	with CD Player	with Cassette	with CD Player	with CD Player	with CD Player	with CD Player	with Cassette	•	with CD Player
•	•	•	•	•	•	•	•	•	•
•	•	•	•	•	•	•	•	•	•
2-stage	2-stage	2-stage	2-stage	2-stage	2-stage	2-stage	2-stage	•	•
•	•	•	•	•	•	•	•	•	•
•	•	•	•	•	•	•	•	•	•
•	•	•	•	•	•	•	•	•	•
•	•	•	Incl. CD Rack	Incl. CD Rack	•	•	•	Centre Table and Armrest*	Centre Table and Armrest
Lockable	Lockable	•	•	•	•	•	•	Armrest only	Armrest only
•	•	60/40	60/40	60/40	•	•	Fold Away Rear Seat	•	•
•	•	•	•	•	•	•	•	•	•
•	•	N/A	N/A	N/A	N/A	N/A	•	•	•
Variable Speed Synchronized	Variable Speed Synchronized	Variable Speed Synchronized	Variable Speed Synchronized	Variable Speed Synchronized	Variable	Variable	Variable	•	•
•	•	•	•	•	•	•	•	•	•
•	•	•	•	•	•	•	•	•	•
x3	x3	x3	x3	x3	x2	x2	x2	x2	x2
•	•	•	•	•	•	•	•	•	•
Illuminated	Illuminated	Illuminated	Illuminated	Illuminated	•	•	•	•	•
Illuminated	Illuminated	Illuminated	Illuminated	Illuminated	•	•	Illuminated	•	•
•	•	•	•	•	•	•	•	•	•
•	•	•	•	•	•	•	•	•	•
•	•	•	•	•	•	•	•	•	•
Accessory	Accessory	Accessory	Accessory	Accessory	Accessory	Body-Coloured	Body-Coloured	Accessory	Accessory
Heat-Absorbing	Heat-Absorbing	Heat-Absorbing	Heat-Absorbing	Heat-Absorbing	Heat-Absorbing	Heat-Absorbing	Heat-Absorbing	•	•
Heated/Power/Body-Coloured	Heated/Power/Body-Coloured	Heated/Power/Body-Coloured	Heated/Power/Body-Coloured	Heated/Power/Body-Coloured	Heated/Power/Body-Coloured	Heated/Power/Body-Coloured	Power	Power	Power/Body-Coloured
•	•	•	•	•	•	•	•	•	•
Body-Coloured	Body-Coloured	Accessory	Accessory	Accessory	•	•	•	•	•
•	•	•	•	•	•	•	•	•	•
64.8	64.8	64.8	64.8	64.8	60	60	65	58	58

See your Dealer for details.

**HONDA.  
THE PLEASURE  
WILL BE  
ALL YOURS.**



All major components in your new Honda are covered by the Honda No Small Print Warranty. This includes manufacturing defects on almost everything essential to the basic operation of the vehicle.

The warranty also protects many other items on your new Honda for 5 years or 100,000 kilometres. Your vehicle is covered from the engine block, radiator and transmission, to little things like the switches for the headlights, ignition and windshield wipers. Your car's body, which protects your body, is protected for 3 years against surface corrosion and for 5 years against perforation due to corrosion.

The battery is 100% covered for two years and 50% for the third year. And let's not forget your audio components; they're protected for three years.

As a new Honda owner, you can prolong your worry-free pleasure even further. Just choose from our flexible selection of



Mechanical Coverages that extends up to 7 years or 160,000 kilometres, whichever comes first. We also offer the option of Roadside Assistance that provides you with Emergency Services: Lock Out, Towing, Gas Delivery, Trip Interruption, Trip Planner, Car Rental, Tire Road Hazard, etc. Ask your Dealer for full details on our Mechanical and Roadside Assistance coverage(s).

Remember, only Honda Plus is designed, administered and backed by Honda Canada Inc. So you can count on us being there.

So, why not protect your investment and budget by asking your Dealer how you can include Honda Plus with your vehicle purchase.

The same can be said for the



Genuine Honda Replacement Parts, which are made to the exact same standards and are also guaranteed by our Genuine Honda Parts Warranty.

All replacement components are made for a perfect fit to help keep your Honda a Honda.

All our technicians are factory-

trained to know your Honda inside and out. So when it's time for your car's check-up, don't open your hood to strangers.

Bring your Honda back home to your Honda Dealer for the best in after-sale service and Genuine Honda Parts. Your vehicle couldn't be in better hands.

Honda Future Value Leasing.



The benefits are clear: automatic GAP

protection; low monthly payments; more vehicle for your money; a closed end lease. Ask your Dealer for a Honda Future Value Lease brochure which explains these benefits in greater detail. Honda Future Value Financing. This option to leasing offers highly competitive rates with the convenience of one-stop shopping right in the Dealership. In addition, we work together to create a plan to fit your particular budget.

Contact your local Honda Dealer for further details on how Future Value Leasing or Future Value Financing can benefit you.

©1997 Honda Canada Inc., 715 Milner Avenue, Scarborough, Ontario, Canada M1B 2K8

Remember Your Seatbelts. It's a Simple Fact of Life.

All information in this catalogue is believed to be accurate at the time of printing. Availability, specifications, materials and colours are subject to change without notice. While every care is taken to accurately reproduce colours, due to limitations of printing processes, colours rendered in the catalogue may not faithfully represent true colours on models. Certain items shown are Dealer options, installed at extra cost.

**HONDA**

**BUILT WITHOUT COMPROMISE.**

