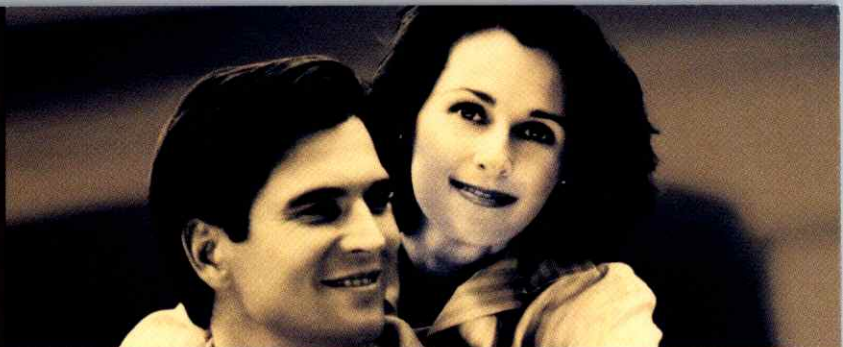




1996 HONDA



A VERY GOOD YEAR

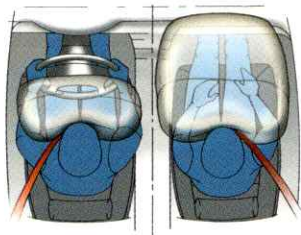
Ladies and gentlemen, introducing the full line of Honda vehicles for 1996. This is a breakthrough year in design, luxury and performance.

You can feel it in the fresh, striking, all-new Civic. You can also see it in the sophisticated lines of the newly styled Accord. And in the superb versatility of the Odyssey. Whether you're looking for a sporty car, a sport/utility vehicle, or something in between, there's a Honda waiting just for you. With Honda's legendary quality and reliability.

We have been manufacturing automobiles in America since 1982. Today, five out of seven Hondas don't believe in just offering you the standards. We believe in setting them and remaining a car ahead. This year we're proud to celebrate 25 years of selling cars in the United States. In fact, the ten millionth Honda was sold in July 1995. You see, at Honda we don't believe in just offering you the standards. We believe in setting them and remaining a car ahead.



INTRODUCING THE
CIVIC SEDAN. YOUR
BASIC LUXURY CAR.



POWER MOONROOF (above right) provides open-air seating with the push of a button (standard on EX Sedan).

POWER CONTROLS (top) are located to give you easy command of power windows, door locks and side-view mirrors (standard on LX and EX Sedan).

DUAL AIRBAGS (bottom) and 3-point seat belts at all outboard seating positions are standard on all Honda models.

MORE ROOM. MORE REFINED. MORE LUXURY. Sounds like your basic luxury car. And with the room comes the most luxuriously comfortable and quiet ride yet. Something more. This car also has the luxury of being a Honda.

THE ECONOMICAL CIVIC DX SEDAN INCLUDES: *Dual Airbags,* 1.6 Liter, 106-hp, 16-Valve Engine with PGM-FI, 5-Speed Manual or Available 4-Speed Automatic Transmission, Power Rack-and-Pinion Steering, Adjustable Steering Column, 4-Wheel Double Wishbone Suspension, Power-Assisted Front Disc Brakes, P175/70 R13 All-Season Tires, AM/FM High-Power Stereo with Clock, Beverage Holder, 60/40 Split Fold-Down Rear Seatback with Lock, Adjustable Front Seat Belt Anchors, Dual Manual Remote-Operated Mirrors, Low-Fuel/Oil Warning Lights, Headlights-On Reminder, Trip Odometer, 2-Speed/Intermittent Windshield Wipers, Adjustable Front Head Restraints, Remote Trunk Release with Lock, Remote Fuel Filler Door Release, Maintenance Interval Indicator, Coin Box, Dual Vanity Mirrors, Child-Proof Rear Door Locks, Rear Seat Heater Ducts*

THE REFINED LX ADDS TO ABOVE: *Power Windows, Mirrors and Door Locks, Front Stabilizer Bar, 14" Wheels with Full Wheel Covers, P185/65 R14 All-Season Tires, Cruise Control, Tachometer, Front Center Armrest with Storage Compartment, Cargo Area Light, Available Anti-Lock Braking System (ABS), Door-Pocket Storage Bins*

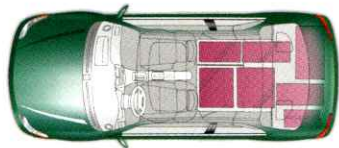
THE LUXURIOUS EX ADDS TO ABOVE: *1.6 Liter, 127-hp, 16-Valve VTEC Engine with PGM-FI, Standard ABS, Air Conditioning, Power Moonroof with Tilt Feature, Remote Entry System*

*Honda reminds you and your passengers to always buckle up.



Civic EX Sedan shown in Vogue Silver Metallic.

THE ALL-NEW
CIVIC COUPE.
QUITE A PACKAGE.



BEVERAGE HOLDER (above right) is conveniently placed to keep you and your front seat passenger refreshed.

CRUISE CONTROL (top) helps make long trips less tiring and more pleasurable (EX).

SPLIT FOLD-DOWN REAR SEATBACK WITH LOCK (bottom) turns the back into one large cargo area or allows a passenger to share the space.

THE SPORTY CIVIC COUPE has been restyled and redesigned to make a lasting impression. With more room and more power than ever before. Not to mention an attractive price tag. The Coupe's modest appetite for fuel takes pressure off your wallet. As a matter of fact, the HX Coupe is one of the most fuel-efficient cars in America.[‡]

THE FUN-TO-DRIVE CIVIC DX COUPE INCLUDES: *Dual Airbags, 1.6 Liter, 106-hp, 16-Valve Engine with PGM-FI, 5-Speed Manual or Available 4-Speed Automatic Transmission, 4-Wheel Double Wishbone Suspension, Power Rack-and-Pinion Steering (AT only), Adjustable Steering Column, Power-Assisted Front Disc Brakes, P175/70 R13 All-Season Tires, AM/FM High-Power Stereo with Clock, Front and Rear Beverage Holders, Dual Manual Remote-Operated Mirrors, 2-Speed/Intermittent Windshield Wipers, Remote Trunk Release with Lock, Remote Fuel Filler Door Release, 60/40 Fold-Down Rear Seatback with Lock, Low-Fuel/Oil Warning Lights, Headlights-On Reminder, Trip Odometer, Adjustable Front Head Restraints, Maintenance Interval Indicator, Driver's Footrest, Coin Box, Dual Vanity Mirrors*

THE FUEL-EFFICIENT HX ADDS TO ABOVE: *1.6 Liter, 115-hp, 16-Valve VTEC-E Engine with PGM-FI, Available Continuously Variable Transmission* (HX only), Power Windows, Mirrors and Door Locks, Tachometer, 14" Alloy Wheels, P185/65 R14 All-Season Tires, Front Stabilizer Bar, Front Center Armrest with Storage Compartment, Cargo Area Light, Door-Pocket Storage Bins*

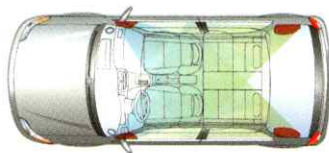
THE SPORTY TOP-OF-THE-LINE EX FEATURES: *1.6 Liter, 127-hp, 16-Valve VTEC Engine with PGM-FI, Available Anti-Lock Braking System (ABS), 14" Wheels with Full Wheel Covers, Power Moonroof with Tilt Feature, Air Conditioning, Cruise Control, AM/FM High-Power Stereo with Clock and 6 Speakers, Remote Entry System*

[‡]The CVT will be available in Spring 1996.



Civic EX Coupe shown in Milano Red with accessory wheels.

THE NEW
CIVIC HATCHBACK.
YOUR FIRST HONDA.



CIVIC HATCHBACK INTERIOR (above right) has been redesigned with more front and rear head, hip and leg room (shown with accessory A/C, CD player and floor mats).

SPLIT FOLD-DOWN REAR SEATBACK (top) makes hauling your cargo easy.

FOUR SPEAKERS (bottom) are standard with the AM/FM High-Power Stereo with Clock on the Civic DX Hatchback to surround you and your passengers with sound.

WE'VE REDESIGNED this dependable and versatile standard. Enjoy increased interior space, fresh styling and a quieter cabin. Go where you want to go, and get there with style. The all-new Hatchback has the same aspirations as every Civic. To free you from the worries normally associated with car ownership. And to be downright fun to drive.

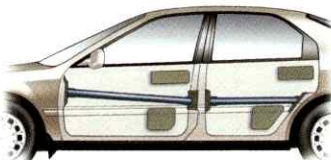
THE AFFORDABLE CIVIC CX HATCHBACK INCLUDES: *Dual Airbags, 1.6 Liter, 106-hp, 16-Valve Engine with PGM-FI, 5-Speed Manual or Available 4-Speed Automatic Transmission, 4-Wheel Double Wishbone Suspension, Power Rack-and-Pinion Steering (AT only), Power-Assisted Front Disc Brakes, P175/70 R13 All-Season Tires, Beverage Holder, 50/50 Split Fold-Down Rear Seatback, Dual Manual Remote-Operated Mirrors, Adjustable Steering Column, Remote Hatch Release, Rear Window Defroster with Timer, Hatch-Open Warning Light, Remote Fuel Filler Door Release, 2-Speed/Intermittent Windshield Wipers, Headlights-On Reminder, Dual Vanity Mirrors, Maintenance Interval Indicator, Coin Box, Trip Odometer, Rear Roof-Line Spoiler, Adjustable Front Head Restraints, Driver's Footrest*

THE POPULAR DX ADDS TO ABOVE: *AM/FM High-Power Stereo with Clock, Extended Body-Colored Rear Roof-Line Spoiler, Removable Cargo Area Cover, Rear Window Wiper/Washer, Seatback Pocket, Low-Fuel Warning Light*



Civic DX Hatchback shown in Midori Green Pearl.

THE ACCORD SEDAN.
A PERFECT BALANCE
OF PERFORMANCE
AND LUXURY.



THE EXCITING ACCORD V-6 (above right) brings an added level of refinement and power to the Accord family (LX and EX Sedans).

TRUNK PASS-THROUGH WITH LOCK (top) is perfect for storing long objects, like ski equipment (LX and EX Sedans).

STEEL BEAMS (bottom) are built into the doors of every Honda to help protect the vehicle's occupants upon a side impact.

SLEEK AND SOPHISTICATED, with an engine that knows how to perform. A spacious interior that knows how to pamper. The Accord Sedan exudes confidence. It offers great looks as well as expert handling. The only difficulty is deciding which of the five models to choose.

THE AFFORDABLE DX SEDAN INCLUDES: *Dual Airbags, 2.2 Liter, 130-hp, 16-Valve Engine with PGM-FI, 5-Speed Manual or Available 4-Speed Automatic Transmission, 4-Wheel Double Wishbone Suspension, Variable-Assist Power Steering, Adjustable Steering Column, Fold-Down Rear Seatback with Lock, Beverage Holder, Rear Window Defroster with Timer, Tachometer, 2-Speed/Intermittent Windshield Wipers, Center Console Armrest with Storage Compartment*

THE FEATURE-RICH LX ADDS TO ABOVE: *Power Windows with Auto-Down Driver's Window, Power Mirrors and Door Locks, Air Conditioning, Cruise Control, AM/FM Stereo Cassette, Fold-Down Rear Seat Center Armrest, Trunk Pass-Through with Lock, Map Lights, Available 4-Wheel Disc Brakes with Anti-Lock Braking System (ABS), 15" Wheels with Full Wheel Covers*

WITH V-6 OPTION ADD: *2.7 Liter, 170-hp, 24-Valve V-6 Engine with PGM-FI, 4-Speed Automatic Transmission, 4-Wheel Disc Brakes with ABS, Driver's Seat with 6-Way Power Adjustment*

THE LUXURIOUS EX ADDS TO LX: *2.2 Liter, 145-hp SOHC VTEC Engine with PGM-FI, Standard ABS, 15" Alloy Wheels, Power Moonroof, Driver's Seat with Adjustable Height and Lumbar Support, AM/FM Stereo Cassette with 6 Speakers, Available Leather-Trimmed Interior*

WITH V-6 OPTION ADD TO ABOVE: *2.7 Liter, 170-hp, 24-Valve V-6 Engine with PGM-FI, 4-Speed Automatic Transmission, Exclusive 15" Alloy Wheels, Leather-Trimmed Interior, Driver's Seat with 8-Way Power Adjustment*



Accord EX V-6 Sedan shown in Heather Mist Metallic.

THE ACCORD COUPE.
DEFINING
PERSONAL STYLE.



POWER MOONROOF (above right) lets you enjoy sunny days and starry nights (EX).

POWER CONTROLS (top) on door panels offer easy command of windows, door locks and mirrors.

DRIVER'S SEAT WITH 6-WAY POWER ADJUSTMENT (bottom) is standard on the EX Coupe with leather interior.

THE SPIRIT OF INDIVIDUALISM is alive and well in the sporty shape and graceful contours of the Accord Coupe. In the driver's seat, you'll appreciate the intimate comfort of the interior and feel connected to the smooth and accommodating ride.

THE STYLISH ACCORD LX COUPE INCLUDES: Dual Airbags, 2.2 Liter, 130-hp, 16-Valve Engine with PGM-FI, 5-Speed Manual or Available 4-Speed Automatic Transmission, 4-Wheel Double Wishbone Suspension, Available 4-Wheel Disc Brakes with Anti-Lock Braking System (ABS), Front Stabilizer Bar, Variable-Assist Power Steering, P185/65 R15 All-Season Tires, Power Windows with Auto-Down Driver's Window, Power Mirrors and Door Locks, Air Conditioning, Cruise Control, Beverage Holder, AM/FM High-Power Stereo Cassette, Center Console Armrest with Storage Compartment, Map Lights, Adjustable Steering Column, Fold-Down Rear Seatback with Lock, Tachometer, Quartz Digital Clock, 2-Speed/Variable Intermittent Windshield Wipers, Rear Window Defroster with Timer, Low-Fuel Warning Light, Remote Trunk Release with Lock, Remote Fuel Filler Door Release, Courtesy Door Lights, Cargo Area Light, Coin Box, Door-Pocket Storage Bins, Seatback Pocket, Illuminated Driver's and Passenger's Vanity Mirrors, Rear Seat Heater Ducts, Lockable Glove Compartment with Light, Maintenance Interval Indicator, Trunk-Open Warning Light

THE ELEGANT EX ADDS TO ABOVE: 2.2 Liter, 145-hp, SOHC VTEC Engine with PGM-FI, 4-Wheel Disc Brakes with Anti-Lock Braking System (ABS), 15" Alloy Wheels, P195/60 R15 All-Season Tires, Rear Stabilizer Bar, Power Moonroof, AM/FM High-Power Stereo Cassette with 6 Speakers, Driver's Seat with Adjustable Height and Lumbar Support, Available Leather-Trimmed Interior, Available 6-Way Power Driver's Seat with Leather



Accord EX Coupe shown in Flamenco Black Pearl.

THE ACCORD WAGON.
THE DO-IT-ALL-MOBILE.



SPLIT FOLD-DOWN REAR SEATBACK (above right) gives you the versatility you need for all of life's duties and adventures.

CARGO AREA STORAGE COMPARTMENT (top) comes in handy for storing a wide variety of small but necessary items.

REMOTE ENTRY SYSTEM (bottom) locks and unlocks the doors and tailgate from 20 feet away. So you won't have to fumble around with the keys when your hands are full (standard on EX Wagon).

NOT ONLY LARGE AND VERSATILE, this is a wagon with the discerning style and handling of a fine sedan. Endlessly useful and eminently clever. It's been put together with dozens of smart little details that let you know it's a Honda.

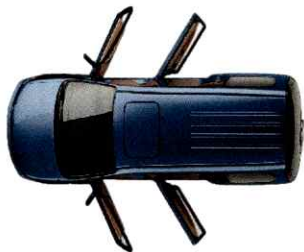
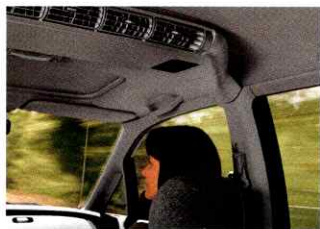
THE VERSATILE ACCORD LX WAGON INCLUDES: Dual Airbags, 2.2 Liter, 130-hp, 16-Valve Engine with PGM-FI, 5-Speed Manual or Available 4-Speed Automatic Transmission, 4-Wheel Double Wishbone Suspension, Front Stabilizer Bar, Variable-Assist Power Steering, P195/60 R15 All-Season Tires, Rear Window Wiper/Washer, Air Conditioning, Power Windows with Auto-Down Driver's Window, Power Mirrors, Door and Tailgate Locks, AM/FM High-Power Stereo Cassette, Cruise Control, Adjustable Steering Column, Beverage Holder, 60/40 Split Fold-Down Rear Seatback, Retractable Cargo Area Cover, Quartz Digital Clock, Tachometer, Center Console Armrest with Storage Compartment, 2-Speed/Variable Intermittent Windshield Wipers, Cargo Area Storage Compartments, Remote Tailgate Release with Lock, Remote Fuel Filler Door Release, Tailgate-Open Warning Light, Rear Window Defroster with Timer, Low-Fuel Warning Light, Courtesy Door Lights

THE LUXURIOUS TOP-OF-THE-LINE EX ADDS TO ABOVE: 2.2 Liter, 145-hp, SOHC VTEC Engine with PGM-FI, 4-Speed Automatic Transmission, 4-Wheel Disc Brakes with Anti-Lock Braking System (ABS), Rear Stabilizer Bar, 15" Alloy Wheels, Power Moonroof, AM/FM High-Power Stereo Cassette with 6 Speakers, Driver's Seat with Adjustable Height and Lumbar Support, Remote Entry System, Roof Rack, Fold-Down Rear Seat Center Armrest



Accord EX Wagon shown in Bordeaux Red Pearl.

THE ODYSSEY.
LIFE BEYOND
THE MINIVAN.



UNIQUE THIRD-ROW SEAT (above right) quickly and easily folds flat into its own storage well—giving you more cargo space, without the need to remove and store the seat.

DUAL AIR CONDITIONING (top) cools both front and rear passengers independently.

FOUR-DOOR DESIGN (bottom) with power windows is convenient and innovative. Just what you'd expect from a Honda.

THE HONDA OF MINIVANS. Proof that you can meet your obligations in life without giving in to them. It's comfortable and spacious, with a car-like drive. And highly practical.

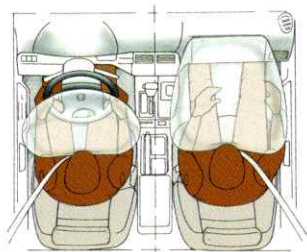
THE VERSATILE ODYSSEY LX INCLUDES: Dual Airbags, 2.2 Liter, 140-hp, 16-Valve Engine with PGM-FI, 4-Speed Automatic Transmission, 4-Wheel Disc Brakes with Anti-Lock Braking System (ABS), Front and Rear Stabilizer Bars, 4-Wheel Double Wishbone Suspension, 15" Wheels with Full Wheel Covers, P205/65 R15 All-Season Tires, Retractable Fold-Down Third-Row Bench Seat, Dual Air Conditioning, Power Rack-and-Pinion Steering, AM/FM High-Power Stereo Cassette, Power Windows with Auto-Down Driver's Window, Power Mirrors, Door and Tailgate Locks, Cruise Control, Adjustable Steering Column, Six Beverage Holders, Rear Window Wiper/Washer, Front Bucket Seats with Armrests, Quartz Digital Clock, 2-Speed/Intermittent Windshield Wipers, Tailgate-Open Warning Light, Rear Window Defroster with Timer, Low-Fuel Warning Light, Courtesy Door Lights, Cargo Area Light, Coin Box, Cargo Area Storage Bin, Upper and Lower Glove Compartments, Dual Vanity Mirrors, Rear Seat Heater Ducts, Maintenance Interval Indicator, Remote Fuel Filler Door Release, Two LX Seating Configurations: 6-Passenger Version has Removable Second-Row Bucket Seats; 7-Passenger Version has 50/50 Split Fold-Down Second-Row Bench Seat (LX only)

THE UNIQUE TOP-OF-THE-LINE EX ADDS: 6-Passenger Seating with Front and Second-Row Bucket Seats, 15" Alloy Wheels, Power Sunroof, Remote Entry System, Driver's Seat with Power Height Adjustment, AM/FM High-Power Stereo Cassette with 6 Speakers, Body-Colored Side Moulding



Odyssey EX shown in Heather Mist Metallic with accessory roof rack.

THE PASSPORT.
FREEDOM TO LET GO.



REMOVABLE TILT-UP MOONROOF (above right) is standard on both EX models.

SHIFT-ON-THE-FLY 4-WHEEL DRIVE (top) lets you engage 4-wheel traction and pulling power while on the go (4WD LX and 4WD EX).

DUAL AIRBAGS (bottom) help provide protection for the driver and front passenger in a severe frontal impact.

THROW OFF ALL RESTRICTIONS. Be yourself. Explore. Life's an adventure inside of this rugged, forthright vehicle. Whether you're going to the next town, or over the next mountaintop. The standard dual airbags will help you feel peace of mind.

THE AFFORDABLE PASSPORT DX INCLUDES (2WD ONLY): Dual Airbags, 2.6 Liter, 120-hp, 8-Valve, 4-Cylinder Engine with Multi-Point Fuel Injection, 5-Speed Manual Transmission, Front Stabilizer Bar, Variable-Assist Power Steering, Front Disc/Rear Drum Brakes, Rear-Wheel Anti-Lock Braking System (ABS), 16" Wheels, Center Console with Storage Compartment

THE STURDY 2WD LX ADDS: 3.2 Liter, 190-hp, 24-Valve V-6 Engine with Multi-Point Fuel Injection, 5-Speed Manual or Available 4-Speed Automatic Transmission, 4-Wheel Disc Brakes, Power Windows and Door Locks, Cruise Control, Adjustable Steering Column, Tachometer; Beverage Holder; AM/FM Stereo Cassette with 6 Speakers, Door-Pocket Storage Bins, Dual Vanity Mirrors, Courtesy Door Lights, Remote Tailgate Window Release with Warning Light

THE RUGGED 4WD LX ADDS: Shift-on-the-Fly 4-Wheel Drive, Air Conditioning, Front Auto-Locking Hubs (4WD only), 16" Alloy Wheels

THE VERSATILE 2WD EX ADDS: 4-Speed Automatic Transmission, Removable Tilt-Up Moonroof, Chrome Bumpers, Unique 16" Alloy Wheels, Cargo Net, Rear Window Wiper/Washer, Splash Guards, Flared Wheelwell Mouldings, Map Lights, Leather-Wrapped Steering Wheel

THE TOP-OF-THE-LINE 4WD EX ADDS: Shift-on-the-Fly 4-Wheel Drive, 5-Speed Manual or Available 4-Speed Automatic Transmission, Front Auto-Locking Hubs, Limited-Slip Differential, 4-Wheel Anti-Lock Braking System

Note: The 1996 Passport will be available in Winter 1995.



Passport 4WD EX shown in Huntsman Green Mica.

THE PRELUDE.
THRILL TO DRIVE.



RACING HERITAGE (above right) The Prelude engine's reliability and power come from lessons learned during 30 years of Honda racing.

POWER CONTROLS (top) give you command of windows and locks.

SHIFTER (bottom) controls the performance 5-speed manual transmission that is standard on all models. Its short gearshift throws allow more precise shifting.

THERE'S A HEIGHTENED ENERGY about the Prelude. You sense it in the sleek, fluid lines of its body. And in the way its aerodynamic shape cuts through the wind with poise and conviction. Quite simply, the Prelude is a thrill to drive.

THE STYLISH PRELUDE S INCLUDES: *Dual Airbags, 2.2 Liter, 135-hp, 16-Valve Engine with PGM-FI, 5-Speed Manual Transmission or Available 4-Speed Automatic Transmission, Front and Rear Stabilizer Bars, 4-Wheel Double Wishbone Suspension, Power Rack-and-Pinion Steering, Power-Assisted 4-Wheel Disc Brakes, 14" Wheels with Full Wheel Covers, P185/70 R14 All-Season Tires, Air Conditioning, Cruise Control, Power Sunroof with Tilt Feature, AM/FM High-Power Stereo Cassette, Tachometer, Power Windows and Mirrors, Beverage Holder, Adjustable Steering Column, Quartz Digital Clock, Front Center Armrest with Storage Compartment, 2-Speed/Intermittent Windshield Wipers, Right-Side Fold-Down Rear Seatback with Lock, Remote Trunk Release with Lock, Remote Fuel Filler Door Release, Rear Window Defroster with Timer, Low-Fuel Warning Light, Cargo Area Light, Seatback Pocket, Dual Vanity Mirrors, Driver's Footrest*

THE SLEEK SI ADDS TO ABOVE: *2.3 Liter, 160-hp, DOHC 16-Valve Engine, Anti-Lock Braking System (ABS), 15" Alloy Wheels, P205/55 R15 All-Season Tires, Chin Spoiler, AM/FM High-Power Stereo Cassette with 6 Speakers, Power Door Locks, Driver's Seat Fine Range Adjustment and Lumbar Support, Memory on Reclining Driver's Seat, Ignition Switch Light*

THE POWERFUL VTEC ADDS TO ABOVE: *2.2 Liter, 190-hp, DOHC VTEC Engine (MT only), AM/FM High-Power Stereo Cassette with 7 Speakers, Rear Spoiler with Integral LED Stoplight, Leather-Trimmed Seats and Door Panel Inserts, Leather-Wrapped Steering Wheel*



Prelude Si shown in Heather Mist Metallic with accessory rear wing spoiler and fog lights.

THE DEL SOL.
IT'LL MAKE YOU SMILE.



LOCKING STORAGE COMPARTMENTS
(above right) behind the seats keep your
valuables out of sight.

AUDIO SYSTEM COVER (top) keeps the
AM/FM High-Power Stereo Cassette away
from prying eyes.

THE LIGHTWEIGHT ROOF PANEL
(bottom) lifts off easily and stores conveniently
in the trunk, leaving room for plenty of stuff.

"SPORTY" is rather an understatement. With three powerful engine choices, and the lightweight removable roof, this open-top car can help you escape from the everyday.

THE FUN DEL SOL S INCLUDES: Dual Airbags, 1.6 Liter, 106-hp, 16-Valve Engine with PGM-FI, 5-Speed Manual or Available 4-Speed Automatic Transmission, Power Rack-and-Pinion Steering (AT only), 4-Wheel Double Wishbone Suspension, Power-Assisted Front Disc Brakes, Front Stabilizer Bar; P175/70 R13 All-Season Tires, Removable Roof Panel, Roof Panel Storage Rack, Power Rear and Side Windows with Auto-Down Driver's Window, Adjustable Steering Column, Tachometer, Centrally Locking Rear Storage Compartments, Center Armrest with Storage Compartment and Beverage Holder; Low-Fuel/Trunk-Open/Rear Window "Down" Warning Lights, Headlights-On Reminder, Coolant Temperature Gauge, Quartz Digital Clock, Trip Odometer, 2-Speed/Intermittent Windshield Wipers, Audio System Cover, Remote Trunk Release with Lock, Remote Fuel Filler Door Release with Lock, Rear Window Defroster with Timer, Cargo Area Light, Driver's Footrest

THE SPORTY SI ADDS TO ABOVE: 1.6 Liter, 127-hp, 16-Valve VTEC Engine, Rear Stabilizer Bar, 4-Wheel Disc Brakes, 14" Alloy Wheels, P185/60 R14 All-Season Tires, Body-Colored Dual Power Mirrors, Power Door Locks, Cruise Control, AM/FM High-Power Stereo Cassette

THE EXCITING VTEC ADDS TO ABOVE: 1.6 Liter, 160-hp DOHC VTEC Engine (MT only), Anti-Lock Braking System (ABS), Larger Front and Rear Stabilizer Bars, P195/60 R14 Tires

Note: The 1996 del Sol will be available in Spring 1996.



The del Sol VTEC shown in Cypress Green Pearl.

*THE HONDA WAY Every Honda comes fully equipped with something other cars may find hard to match—peace of mind. Your new Honda is covered by our 3-year/36,000-mile limited warranty.** Also available is the added protection of our Honda Care vehicle service contract. And with nearly 1,000 Honda dealers nationwide dedicated to fast,*

courteous service, it's no wonder Honda owners come back to Honda car after car after car.†† If you'd like more information about any Honda vehicle, including a list of specifications, features and Dealer-Installed Options, feel free to ask your Honda dealer for an individual product brochure. And ask about the excellent finance and leasing options.

ACar Ahead



<http://www.honda.com>

*Number one in export sales based on AAMA sales report, January 1995. †EPA mileage estimates for Civic HX Coupe are 39 mpg/city and 45 mpg/highway. Actual mileage may vary. **3-Year/36,000-Mile Limited Warranty: Ordinary maintenance items or adjustments, parts subject to normal wear and replacement, and certain items are excluded. See your Honda dealer for the terms and conditions of this limited warranty. ††Number One in Import Owner Loyalty: The Polk Co's Leading Automobile Sales Analysis of Repeat Ownership, 4/95. Specifications, features, illustrations and equipment shown in this brochure are based upon the latest available information at the time of printing. Although descriptions are believed correct, accuracy cannot be guaranteed. American Honda Motor Co., Inc., reserves the right to make changes at any time, without notice or obligation, in colors, features, specifications, accessories, materials and models. Some features shown may not be available on all models. Some vehicles are shown with optional equipment. California version differs slightly due to emissions standards. Available=Optional. The Passport is manufactured for Honda by Isuzu at the SIA factory in Lafayette, Indiana. Printed in U.S.A. on recycled paper, 9/95. ♻️ ©1995 American Honda Motor Co., Inc. Z0617