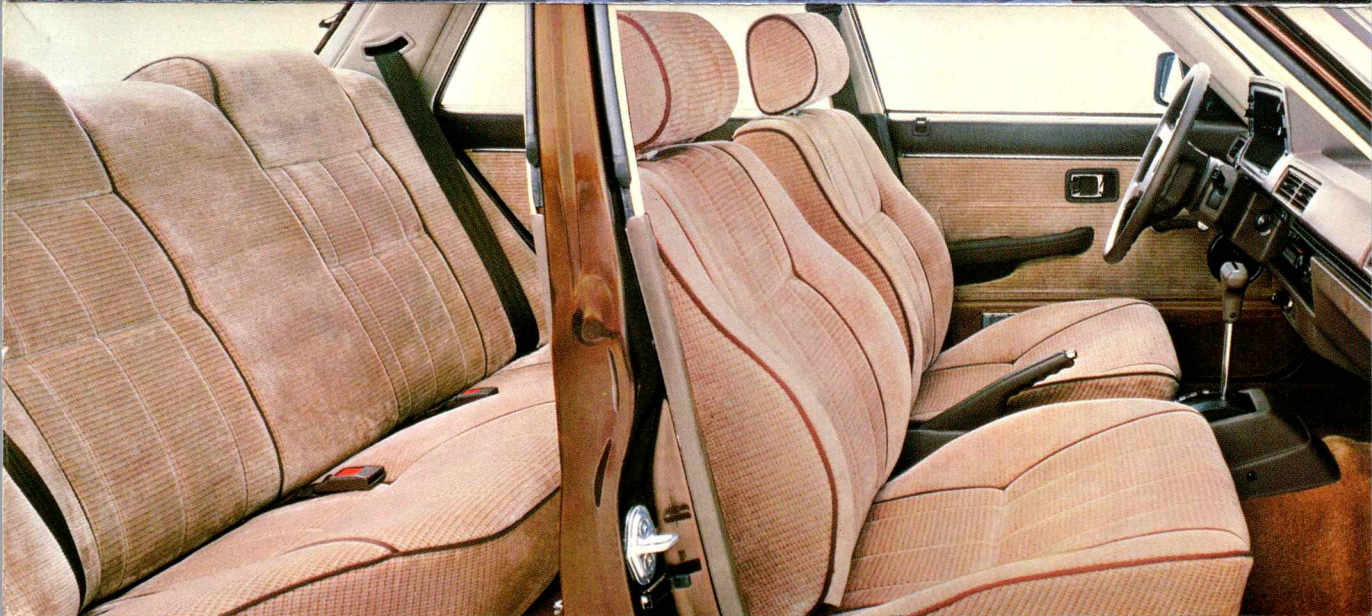




HONDA 1982. CLOSER TO THE ULTIMATE CAR

Honda Civic. There are new aerodynamic designs, rich new interiors, new fuel saving engines and a whole new engineering thrust toward automotive excellence. And, of course, it still comes with Honda's tradition of quality craftsmanship, and superior fit and finish.

Honda for 1982 is style, economy, luxury and just plain fun driving. Choose the one that comes closest to your idea of the ultimate car.



The Honda "Complete Car Coverage" Warranty. It's better because Honda's are built better. \*See your Honda dealer for details and conditions.

See your Honda dealer today.

The Honda product line for 1982 is the most extensive ever, featuring new designs, new models and new engineering ideas that will set the pace for the energy conscious Eighties.

Standing behind the latest Honda technology is one of the most dedicated and diverse dealer organizations in North America. The more than one hundred and eighty Honda dealers throughout Canada assure you that no matter where you travel, from Victoria, to St. John's, you're never far from expert Honda All Star Service, genuine Honda Parts and friendly advice to help you on your way. Your Honda dealer also carries the complete line of Honda convenience and luxury accessories. Honda accessories let you dress up your Honda exactly the way you want it, to make it personally yours.

See your Honda dealer today. He has the new car selection, the service and the accessories to convince you that owning a Honda is one of the most practical, profitable and satisfying car buying decisions you'll ever make.

Accord/Prelude Standard Features	ACCORD HATCHBACK	ACCORD 4-DR. SEDAN	PRELUDE
Moquette Interior Trim		X	X
Tricot Seat Inserts - Vinyl Trim	X		
Map Pocket in Doors	DRIVER'S ONLY	FRONT DOORS	DRIVER'S ONLY
Full Carpeting (Including Lower Door Panels)	X	X	X
Four-Spoke Sport Steering Wheel	X	X	X
Cargo Area/Trunk Light	X	X	X
Maintenance Reminder	X	X	X
Resettable Trip Odometer	X	X	X
Low-Fuel Warning Light	X	X	X
Tachometer	X	X	X
Electronic Warning System	X	X	X
Quartz Clock	SWEEP HAND	DIGITAL	DIGITAL
Combination Oil Pressure/Oil Level Light	X	X	X
Courtesy Light in Each Door	X	X	X
Dual Rectangular Halogen Headlights	X	X	X
Cigarette Lighter	X	X	X
Locking Glove Compartment with Light	X	X	X
Coin Box	X	X	X
Storage Boxes in Rear Seat Side Panels	X	DNA	X
Passenger Assist Handle - Right Front and Rear Compartments	X	X	RIGHT FRONT ONLY
Storage Boxes in Each Side of Trunk Floor	DNA	X	X
Mud Guards - Front and Rear Wheels	X	X	X

DNA - Does Not Apply

† Available Only with Optional Automatic Transmission

\*Based on R. L. Polk new car sales. Best selling import car in years 1976, 1977, 1978, 1979, 1980.

Civic Base 5700 2DR  
" 4DR 5SP 6500  
Civic 4 sedan Auto 7700 7500 5SP  
Civic FE 2DR 6800

Accord 4DR Auto 9800  
5PD 9300

Accord Hatch  
Auto 9800  
5PD 8400

HONDA

For nearly a decade we've been providing the answers to Canada's most complex driving needs. Front wheel drive, transverse mounted engines, CVCC fuel efficiency, and much more; all in practical, roomy, fun-to-drive cars that have become the import sales leaders year after year.

For 1982, we've taken a giant step closer to the ultimate car. Totally re-designed Accords, more luxurious than ever Prelude, and an extended model line up of Canada's most popular import, the

ACCORD HATCHBACK

The all new Accord for 1982 is simply more Accord for the money. A totally new exterior design, longer, wider, smoother riding, better handling. The interior is richer, more luxuriously appointed

than ever... with more room and passenger comfort for longer trips. The 1600c.c. engine performs on command at any speed. Full instrumentation and a sporty, luxury interior make it fun to drive and a pleasure to own.



ACCORD LX SEDAN

Unprecedented luxury in a compact car. A wider track and longer smoother riding wheelbase, offer touring sedan comfort with five passenger roominess. The 1600c.c. power plant

with front wheel drive responds effortlessly. Ventilated front disc brakes assure fade-free stops. A cavernous, carpeted trunk means you can take it with you. Accord for '82 offers luxury with a capital LX.



PRELUDE SPORTS COUPE

The new legend on the Sports Coupe scene. Classic styling, nimble handling, powerful 1600c.c. performance, power-assisted front disc brakes, electric sunroof and a long list

of other luxury and convenience features as standard equipment. Prelude is a special one of a kind car... a very affordable dream.



Honda's "Complete Car Coverage" Warranty

If you want the true story on a car's quality, don't read the advertising; read the warranty. Then ask around to find out who lives up to their promises. Because every Honda is really built better, we can afford to back them better with one of the strongest new car warranty packages in the auto industry - all at no extra cost.

For the first year or 20,000 kilometers\*, your Honda is covered under the basic new car warranty. If anything goes wrong due to workmanship or material defects, we fix it. The power train is protected for two years or 40,000 kilometers\*. And all emission control devices are warranted for five years or 80,000 kilometers\*.

No matter how many kilometers your Honda may travel, we'll fix surface corrosion within the first eighteen months\*, provided it hasn't been caused by accident or damage, and perforation of body metal in the first five years\*, provided that it wasn't caused by accidents or other physical damage.

This airtight warranty comes with the car at no extra cost. With Honda there are no deductible charges, and while it is in effect, it can increase the resale value of your Honda because it's transferable to every owner of the car.

Accord/Prelude Standard Features	ACCORD HATCHBACK	ACCORD LX 4-DR. SEDAN	PRELUDE
Front Wheel Drive	X	X	X
Front-Wheel Independent Suspension	X	X	X
5 Speed Manual Transmission	X	X	X
Rack and Pinion Steering	X	X	X
Variable Assist Power Steering	X	X†	X†
Power Operated Moonroof		X	X
Power-Assisted Self-Adjusting Brakes - Discs Front, Drums Rear	X		X
Steel-Belted Radial Ply Tires	X	MICHELIN	X
Bright Metal Wheel Trims Rings	X	X	X
Protective Body Side Mouldings	X	X	X
Tinted Glass	X	X	X
Front Side Window Defrosters	X	X	X
Rear Seat Heater Ducts	X		X
Locking Fuel Filler Door	X	X	X
Two Speed Plus Intermittent Wipers	X	X	X
Rear Window Defroster	X	X	X
Rear Window Wiper Washer	X		X
Remote Hatch/Trunk Release	X	X	X
Remote Control Outside Rearview Mirror	X	X	X
Day/Night Rearview Mirror	X	X	X
Vanity Mirror - Right Sun Visor	X	X	X
Opening Rear Quarter Windows	X	DNA	
Reclining Front Bucket Seats with Adjustable Headrests	X	X	X
Memory Seat - Right Front	X	DNA	
Rear Seat Built-In Headrests	X	X	



HONDA CIVIC F.E.

An all new model for 1982. FE stands for fuel economy and at 5.1 l/100 km, this Honda is Canada's gas mileage leader. Standard equipment includes the 1335c.c. CVCC engine, a five speed trans-

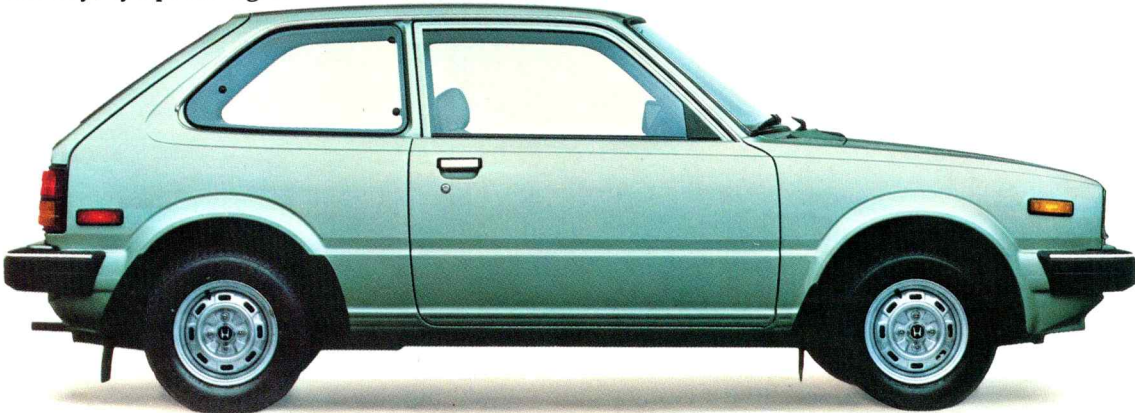
mission and radial tires. Inside the look is luxury all the way. Tachometer, deep pile one-piece carpet, full interior trim, fully reclining bucket seats, fold down rear seat back, tinted glass and much more.



HONDA CIVIC DELUXE HATCHBACK 2 DOOR

The sensible standard Civic Canada has come to know and love, all wrapped up in a beautiful more luxurious package. Textured upholstery, eye pleasing colour co-ordinated

trim, advanced aerodynamic refinements, and a new, detailed dash that gives full information every second you drive.



HONDA CIVIC DELUXE HATCHBACK 4 DOOR

The same fun-to-drive stylish Civic Deluxe, but with 4 door convenience and an even more luxurious interior. Folding rear seat back,

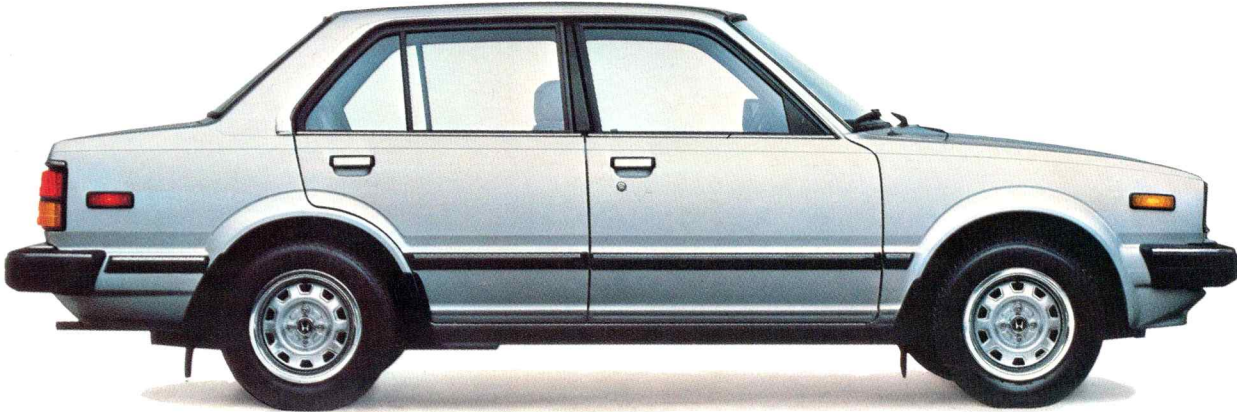
child-proof door locks and more. Available with a five speed transmission or with an optional Hondamatic.



CIVIC GL SEDAN

A totally new model for 1982, the flagship of the Civic fleet. The GL Sedan is richly finished and appointed throughout, with luxurious moquette reclining seats, wall to wall carpeting,

digital clock, five speed transmission and Honda's 1500c.c. CVCC engine. This is the super Civic, longer, smoother riding, aerodynamically efficient, with full five passenger roominess.



CIVIC 1500 GL HATCHBACK

A new kind of luxury in the sub-compact class, sleek, sporty, personal prestige. The power and economy of our famous 1500c.c. CVCC

engine, sure-footed handling, aerodynamic design and full instrumentation. It's Civic practicality dressed up to impress wherever it goes.



CIVIC WAGON

A wagon workhorse that performs like a Civic. Large cargo area. Huge load capacity. Easy access wide opening tailgate. Dual stage suspension. Four position rear seat back.

Luxurious interior. Unmatched fuel economy from its stingy mileage stretching 1300c.c. Civic engine to its smooth, quiet five speed transmission. Civic... a wagon that looks great and carries its weight.



Civic Standard Features	CIVIC STANDARD HATCHBACK	CIVIC FE HATCHBACK	CIVIC DELUXE 2/4 DOOR HATCHBACK	CIVIC 1500 GL HATCHBACK	CIVIC 4-DOOR SEDAN	CIVIC 4-DOOR WAGON
Front-Wheel Drive	X	X	X	X	X	X
Four-Wheel Independent Suspension	X	X	X	X	X	X
4-Speed Manual Transmission	X					
5-Speed Manual Transmission		X	X	X	X	X
Rack and Pinion Steering	X	X	X	X	X	X
Power-Assisted, Self-Adjusting Brakes — Discs Front, Drums Rear	X	X	X	X	X	X
Steel-Belted Radial Ply Tires		X	X	X	X	X
Bright Metal Wheel Trim Rings			X	X	X	
Protective Body Side Mouldings			X	X	X	
Bright Metal Window Reveal Mouldings			X	X	X	X
Tinted Glass		X	X	X	X	X
Front Side Window Defrosters	X	X	X	X	X	X
Locking Fuel Filler Door	X	X	X	X	X	X
Two-Speed Plus Intermittent Wipers		X	X	X	X	
Rear Window Defroster		X	X	X	X	X
Rear Window Wiper/Washer		X	X	X	X	
Remote Hatch Trunk Lid Release		X	X	X	X	
Hatch Trunk Open Warning Light	X	X	X	X	X	
Remote Control Outside Rearview Mirror	X		X	X		X
Day/Night Rearview Mirror		X	X	X	X	X
Vanity Mirror — Right Sun Visor			X	X	X	
Opening Rear Quarter Windows	X	X	X	X	DNA	DNA
Reclining Front Bucket Seats with Adjustable Headrests	X	X	X	X	X	X
Rear Seat Built-In Headrests						

DNA = Does Not Apply

Civic Standard Features	CIVIC STANDARD HATCHBACK	CIVIC FE HATCHBACK	CIVIC DELUXE 2/4 DOOR HATCHBACK	CIVIC 1500 GL HATCHBACK	CIVIC 4-DOOR SEDAN	CIVIC 4-DOOR WAGON
Padded Door Armrests		X	X	X	X	X
Adjustable Rear Seatback		X	X	X	DNA	X
Moquette Interior Trim					X	
Tricot Seat Inserts — Vinyl Trim	ALL VINYL	FULL TRICOT	X	FULL TRICOT		X
Full Carpeting	X	X	X	X	X	X
Carpeted Lower Door Panels			X	X	X	
Four-Spoke Sport Steering Wheel			X	X	X	
Cargo Area/Trunk Light	X	X	X	X	X	X
Resettable Trip Odometer	X	X	X	X	X	X
Tachometer		X	X	X	X	
Quartz Digital Clock			X	X	X	
Cigarette Lighter		X	X	X	X	X
Coin Box		X	X	X	X	X
Stowage Boxes in Rear Seat Side Panels	X	X	X	X	DNA	DNA
Passenger Assist Handle — Right Front		X	X	X	X	X
Passenger Assist Handles — Rear Compartment			X	X	X	X
Magazine Pocket — Back of Right Front Seat				X	X	X
Stowage Boxes in Each Side of Trunk Floor	DNA	DNA	DNA	DNA	X	DNA
Mud Guards — Front and Rear	X	X	X	X	X	X

DNA = Does Not Apply  
Materials, equipment, colors, models, specifications and availability are subject to change without notice. Colors may vary from those pictured.