

HONDA®

PRELUDE

The personal coupe for grown-ups.



Rarely

a



has a car been so sensible yet so sporty and refined— and such a pleasure to own.

The Prelude is like a breath of fresh air. An intelligent arrival on the motoring scene.

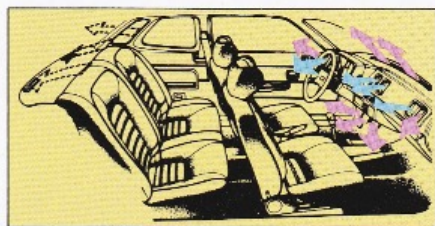
Mature yet youthful, sensible yet exciting, the Prelude offers levels of comfort and performance that will satisfy even the most demanding of motorists. And, perhaps equally important, the Prelude has its own unique style—the kind of style that's appreciated most by people who enjoy going their own way. In other words, the Prelude is a personal coupe that blends perfectly with the life style of the individualist.

Alloy wheels are optional in some countries.

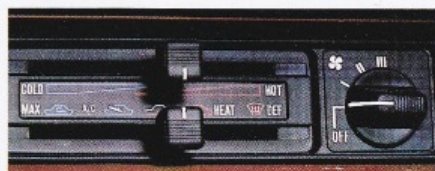




Cruising in the country or commuting to the city, the Prelude offers all the comfort you need.



Good ventilation keeps you alert
The Prelude's flow-through fresh air or 3-speed forced air ventilation system enables day-long driving comfort. For safety's sake, the control levers move horizontally.

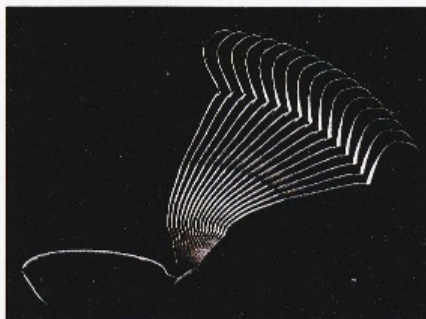


Optional space-saving air conditioner
Because the optional air conditioner is built into the dash, there's no bulky unit to intrude on legroom. This unit functions with the air-mix heater to assure a comfortable temperature throughout the year.



Headrests adjustable in four directions!
The front headrests can be moved up and down to one of three positions, and can also be adjusted up to 48 degrees in the forward-backward direction.

With so many combinations available, you're bound to find the one that is just right for you.



Body-hugging front buckets
Like a favorite chair, the Prelude's front

bucket seats accommodate you in comfort, luxury and style. They're human-engineered to reduce fatigue, provide freer and easier shoulder movement, and to give you all-day-long driving pleasure.



Luxurious carpeting and door trim
Cut pile carpeting adds to the Prelude's interior elegance and comfort. Even the doors have cut pile sections on them.

Inte

The smoked-glass sunroof... added enjoyment for you and your passengers.



Electric smoked-glass sunroof adds to driving fun!

Open the sunroof and go for a drive on a clear, early morning...or sunny afternoon... or on a star-lit night. That's when you'll experience an exhilarating feeling of spaciousness, of freedom. It's a pleasurable feeling, too, to drive with the smoked-glass sunroof closed and the inner sunshade open.

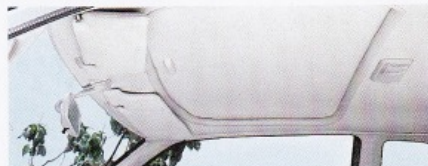
The car body has extra strength and rigidity to compensate for the sunroof, which is 521mm long and 905mm wide. The electrically powered sunroof opens smoothly when you press the dash-mounted control button, and it will stop wherever you want it to when you release the button.



Deflector prevents wind problems

Even at high speed you can have the sunroof fully open and not worry about wind noise and ruffled hair styles. That's because a deflector automatically moves up into position whenever the sunroof is opened.

Three ways to enjoy the electric sunroof/manual sunshade combination:



Close both the sunroof and sunshade to turn the Prelude into a conventional car.



Close the sunroof but leave the sunshade open, so the car interior is bright and quiet.



Open both the sunroof and sunshade to let in light and air.



Door window demister



ELR 3-point seat belts (front)



Spacious glove box



rior



For the driver, everything is arranged to make motoring a relaxing pleasure.



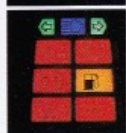
POWER STEERING

Power steering

that lets you "feel" the road

The Prelude's optional power steering is very light when the car is stationary, and gradually offers resistance as the speed increases. So it's ideal when you park, yet lets you "feel" the road at high speed — a typical example of how Honda's engineering know-how is put to work for your safety and comfort.

Safety indicators tell you in words and pictures if something is amiss



If you don't properly close one of the doors or the trunk lid, the Prelude's safety indicators will tell you. They'll also inform you if one or both of the brake light bulbs has burnt out. The indicators are dual types: a diagram of the car lights up to indicate the malfunction simultaneously with an illuminated printed warning.



Conveniently located controls

All the controls are positioned so that to operate them the driver does not have to take his hands off the wheel for more than a moment. The light controls are located on one steering column stalk and the wiper/washer controls on another.



Electronic digital quartz clock

The highly accurate clock has a bright display so that it is easy to see. The display comes on when the ignition is switched on; when the ignition is off the time is displayed if the cover of the time-adjusting buttons is pressed. These buttons make time resetting simple.



Rotary-dial radio with power antenna

Simple to operate, the radio is located so that the driver doesn't have to lean forward to operate it; the power antenna switch, too, is close to hand. Preset stations don't drift, rotary tuning in to other stations is smooth, and sensitivity is high.

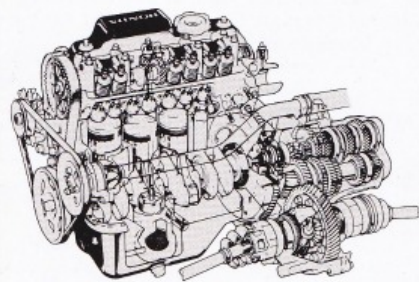
*Not available in some countries.

Instrument Panel



The Prelude doesn't just have a sporty look — it's got a sporty performance, too.

The engine: plenty in reserve and strong on reliability

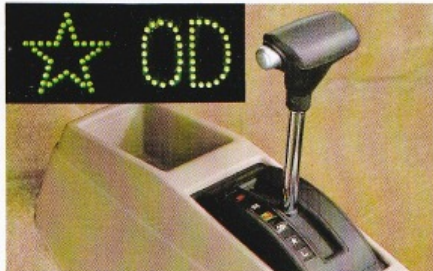


The Prelude's power package is a tough, flat torque 1602cc engine having a maximum power of 80 PS at 5,300 r.p.m. (DIN) and maximum torque of 12.9kg/m at 3,500 r.p.m. (DIN). It delivers steady power to assure smooth running throughout the low and high speed ranges, and offers great acceleration. Equally important, the engine is durable, so sustained highway driving presents no problems — and neither does stop-and-start city driving. Immediate response to accelerator movement is another appreciable feature. And the engine is very quiet.

HONDAMATIC WITH OVERDRIVE

The smooth, time-proven HONDAMATIC transmission is available as an option.

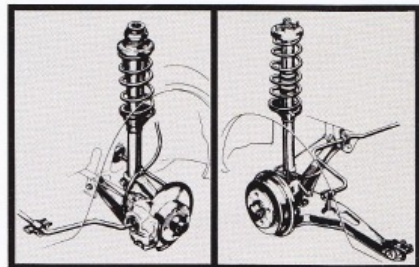
The **OD** overdrive range assures economy and comfort — and less noise. What's more, in the **4** range you get outstanding acceleration for standing starts and overtaking.



Target meter transmission mode indicator
For greater convenience, an automatic transmission mode display has been incorporated into the centralized target meter. So there's no need to look down to ensure that you've selected the correct position.

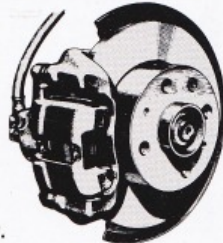
Offset spring suspension

The front and rear suspension springs are offset to prevent excessive stress on the dampers. This results in reduced damper friction while the car is running, which means you get a more comfortable ride. Driveability is improved by the front and rear stabilizers, which reduce body roll during cornering.



Smooth, responsive brake system

The Prelude's new servo-assisted brake system provides a swift and dependable yet soft response to light pressure on the brake pedal. A diagonal dual circuit system is employed, so if one circuit should fail the other will continue to provide stopping power. Both the new front discs, which have calipers designed to resist salt and muddy water, and the rear drums adjust themselves automatically.

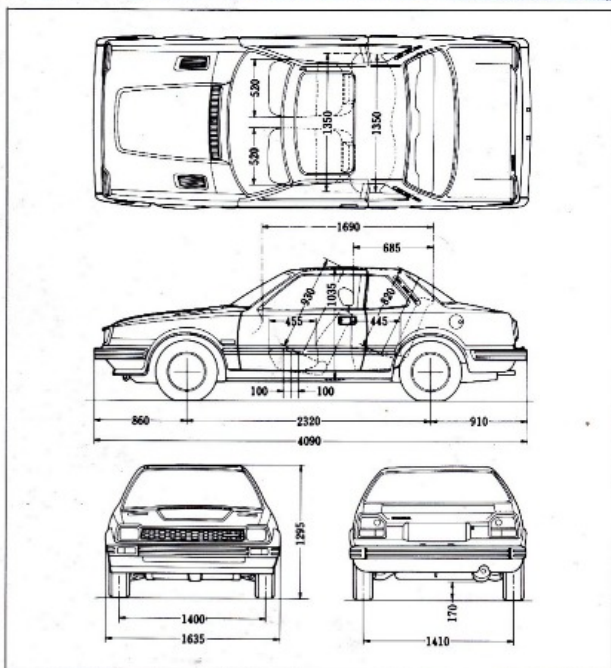


Driveability

Technical Specifications

Horsepower (DIN)	80 PS/5,300 rpm	59 kW/5,300 min ⁻¹
Torque (DIN)	12.9 kg-m/3,500 rpm	126.5 N.m./3,500 min ⁻¹
Engine	Water-cooled 4-stroke OHC in-line 4-cylinder transversely mounted	
Displacement	1,602 cm ³	
Bore & Stroke	77 × 86 mm	
Compression Ratio	8.4 : 1	
Transmission	Manual	5-speed synchromesh
	Hondamatic	Torque converter with three manually selected forward speeds
Gear Ratios	Manual	Hondamatic
	1st	3.181 L 2.047
	2nd	1.944
	3rd	1.291 ☆ 1.370
	4th	0.928 OD 0.969
	5th	0.774 R 1.954
Reverse	3.000	
Clutch	Dry single plate, diaphragm spring	
Steering System	Rack and pinion, collapsible steering column, locking type	
	3.26 turns lock-to-lock	
Drive Wheels	Front	
Suspension	4-wheel independent with MacPherson struts and front and rear stabilizers	
Brakes	Front	Hydraulic servo-assisted discs
	Rear	Hydraulic servo-assisted leading/trailing shoe drum type with PCV (proportioning control valve)
Tires	155SR-13	
Dimensions	L × W × H	4,090 × 1,635 × 1,295 mm
Wheelbase	2,320 mm	
Tread	Front	1,400 mm
	Rear	1,410 mm
Ground Clearance	170 mm	
Fuel Tank Capacity	50 liters	
Curb Weight	920 kg (manual transmission)	

Dimensions (mm)



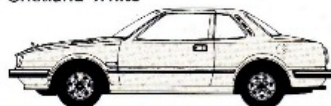
Standard Equipment

Exterior	Electric glass sunroof with sliding sunshade and wind deflector
	Door mirrors (both sides)
	Side protection mouldings
	Rubber corner pads for bumpers
	Mudflaps (front and rear)
Interior	Inner fenders (front)
	Fully reclining bucket seats with adjustable headrests (front)
	3-point seat belts with Emergency Lock Retractor (front)
	Day/night rearview mirror
	Sun visors, vanity mirror on passenger's side
	Collapsible steering column with lock
	Centralized target meter
	● Speedometer (odometer/tripmeter)/Tachometer
	● Fuel gauge/Water temperature gauge
	● Pilot lamps (choke/brake/oil pressure/brake oil level/battery charge/high beam/fuel/hazard lights)
	● Safety indicators (doors/trunk lid/brake lamps)
	● Maintenance indicators (tire rotation/engine oil change/oil filter change)
	Side window demisters
	Hand grip (front passenger side)
	Rear side pockets
Lights	Carpet (wall-to-wall)
	Remote trunk lid release
	Instrument illumination control
	Hazard warning lights
	Glove box light
	Interior light
	Trunk room light
Electrical system	Halogen headlights
	Passing lights
	2-speed wipers with intermittent wipe
	Electric windshield washer
	Electric rear window demister
	Radio (AM/FM), power antenna
	Electronic digital clock
	Heater/Illuminated heater control panel

Some of the above equipment may not be available in certain countries.

Body Colors

Shetland White

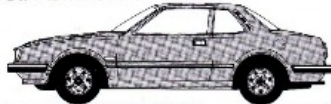


Windsor Blue Metallic



Blue Interior

St. Moritz Silver Metallic



Ivory Interior

Longleat Gold Metallic



Black Interior

Tudor Red Metallic



Ivory Interior

Ivory Interior

Shades of colors printed here may differ slightly from those of the actual automobile. Some of the colors may not be available in certain countries.