



**HYUNDAI**

NEW THINKING.  
NEW POSSIBILITIES.™

2015

**ACCENT**





**NEW THINKING  
CREATES NEW  
POSSIBILITIES.**

**AT HYUNDAI, WE WANT YOUR  
VEHICLE TO BECOME A PART  
OF YOUR LIFE, NOT SIMPLY  
A TOOL TO FACILITATE IT.  
WE LOOK TO DESIGN AND  
ENGINEER VEHICLES THAT  
ARE SO MUCH MORE THAN  
JUST A SOURCE OF  
TRANSPORTATION, BUT  
RATHER INNOVATIVE  
ENVIRONMENTS THAT STEM  
FROM YOUR NEEDS. TO THIS  
END, HYUNDAI STRIVES  
TO UNDERSTAND YOUR  
EXPECTATIONS AND EXCEED  
THEM WITH INNOVATIVE  
AND THOUGHTFUL  
TECHNOLOGY. THROUGH  
THIS NEW THINKING, WE WILL  
CREATE NEW POSSIBILITIES.**



***UNCOMPROMISED  
STYLE, SPACE AND  
FUEL EFFICIENCY***

The 2015 Accent challenges the small car category by giving you everything you need while not holding back on the comforts you want. With the 2015 Accent you get space, style and safety, while still getting exceptional fuel efficiency. Best of all, driving an Accent is fun. At Hyundai, we believe that purchasing a small car is no longer about making compromises – this is what separates the 2015 Accent from the rest.



## *AN ELEMENT OF DESIGN*

The dynamic lines and deep grooves of the 2015 Accent represent the very best of Hyundai's fluidic sculpture design principle. Strong, defined wheel arches and a distinctive hexagonal front grille create a sporty, sleek profile. Adding to the stylish design for 2015 are available projection headlights with LED daytime running lights and redesigned wheels. Plus, its small exterior and maneuverability help make parking a simple task. Let's just say you're going to enjoy driving this car, a lot.





AVAILABLE FOG LIGHTS



AVAILABLE TURN SIGNAL INDICATORS



AVAILABLE PROJECTION HEADLIGHTS  
WITH LED DAYTIME RUNNING LIGHTS





## SMALL EXTERIOR. LARGE INTERIOR

Step into the 2015 Accent and you might never want to leave. Considering its exterior proportions, the interior may seem a little like magic. With so much space inside, it leaves you free to fill with all your necessities. Enjoy the available sunroof, tune into your favourite music with the standard iPod®/USB/auxiliary input jacks, and stay connected with friends and family through the available Bluetooth® hands-free phone system.

AVAILABLE STEERING WHEEL-MOUNTED  
AUDIO / CRUISE / BLUETOOTH® CONTROLS



AVAILABLE AUTOMATIC  
TEMPERATURE CONTROL



May not be exactly as shown.

AVAILABLE SUNROOF



May not be exactly as shown.



## *ACTIVE AND PASSIVE SAFETY*

There are two types of safety: active and passive. The former works to prevent accidents, while the latter helps to protect the passengers in an accident. The 2015 Accent comes loaded with both types. Every Accent comes standard with six airbags<sup>1</sup>, Vehicle Stability Management (VSM), Electronic Stability Control (ESC), Traction Control System (TCS)<sup>2</sup>, and front active head restraints. For better accident avoidance, the 2015 Accent is equipped with standard 4-wheel disc brakes and an Anti-lock Braking System (ABS) with Electronic Brake-force Distribution (EBD) and Brake Assist (BA). When it comes to safety, the 2015 Accent is well prepared.

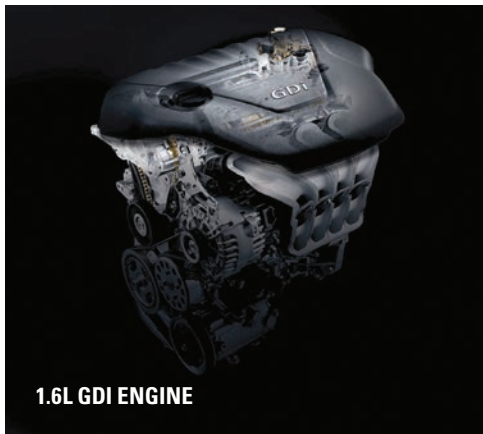


## EVERY LAST DROP

The primary measure of a small car is its fuel consumption. With Gasoline Direct Injection (GDI) engine technology, the 2015 Accent is able to precisely control the injection of fuel and deliver an impressive 138 horsepower, 123 lb-ft of torque and 6.3 L/100 km highway fuel economy<sup>^</sup>. We've also incorporated an offset crankshaft design, an electronic throttle control and an available 6-speed automatic transmission. It all adds up to greater fuel efficiency.



AVAILABLE 6-SPEED AUTOMATIC  
TRANSMISSION



1.6L GDI ENGINE

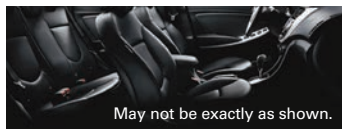


STANDARD 4-WHEEL DISC BRAKES  
WITH ABS





# ACCENT FEATURES



May not be exactly as shown.

## HEATED SEATS.

The 2015 Accent features heated front-seats (standard on the GL and GLS models) to help keep you warm on even the coldest Canadian winter day.



## PROJECTION HEADLIGHTS WITH LED DAYTIME RUNNING LIGHTS.

Available projection headlights with LED daytime running lights provide added style to the 2015 Accent.



## POWER SUNROOF.

Connect with the sun, sky and fresh air with an available power tilt-and-slide, one-touch glass sunroof.



## USB/MP3/AUXILIARY CONNECTIVITY AND AVAILABLE SIRIUSXM™ RADIO.

An available 6-speaker, 172-watt audio system provides great sound. Standard USB auxiliary input jacks let you listen to your favorite music from your personal device, or tune into the available SiriusXM™ Satellite Radio with a 90-day complimentary subscription for over 130 digital channels for even more music options.



## 4-WHEEL DISC BRAKES.

Standard 4-wheel disc brakes provide an extra level of confidence with a larger friction surface and better cooling capabilities than regular drum-style brakes.



## BLUETOOTH® HANDS-FREE PHONE SYSTEM.

Staying in touch means being able to talk to friends and family whenever you want to. With the available Bluetooth® hands-free functionality, you can make and receive phone calls hands-free through the stereo system, keeping calls safe and convenient.



## SMART STORAGE.

Traveling with lots of stuff? Chances are that the 2015 Accent has a spot for it. Take a seat inside and you'll find available features such as overhead sunglass storage, front map pockets with bottle holders, a storage tray, dual front cup holders, a sliding armrest storage console, and a front glove compartment – all to help keep you organized. For larger and longer items you need to store, the 2015 Accent also offers available 60/40 split fold-down rear seatback.



## ACTIVE ECO SYSTEM.

It's as simple as pushing a button. Standard on all automatic transmission models, the Active ECO system modifies engine and transmission control for smarter accelerations to help improve fuel economy.



May not be exactly as shown.

## AUTOMATIC TEMPERATURE CONTROL.

The available automatic temperature control system provides ultimate comfort and convenience by maintaining the temperature selected by the driver or passenger. By monitoring temperature levels and controlling airflow, the cabin temperature stays exactly the way you want it, no effort required.

## THERE'S NO SUBSTITUTE FOR PEACE OF MIND.

The quality of our vehicles is equally matched by the quality of our warranty. Rest assured, we stand proudly and confidently behind our vehicles to give you the ultimate peace of mind with a 5 year/100,000km comprehensive limited warranty, one of the best backed warranties in Canada. We also provide a 5 year/Unlimited km Roadside Assistance Program<sup>††</sup> featuring flat tire changing, lockout service and more. Just one toll-free call away, 24 hours a day. You're covered with Hyundai.

**5 YEAR  
WARRANTY**

**100,000 KM**  
COMPREHENSIVE LIMITED WARRANTY

**5-YEAR/100,000 KM**  
Comprehensive Limited Warranty<sup>†</sup>

**5-YEAR/100,000 KM**  
Powertrain Warranty

**5-YEAR/100,000 KM**  
Emission Warranty

**5-YEAR/UNLIMITED KM**  
Roadside Assistance Program<sup>††</sup>

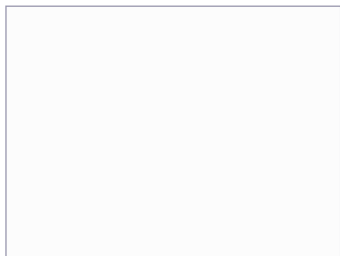


5-door model shown.



ACCENT  
COLOURS

EXTERIOR



CENTURY WHITE



IRONMAN SILVER<sup>a</sup>



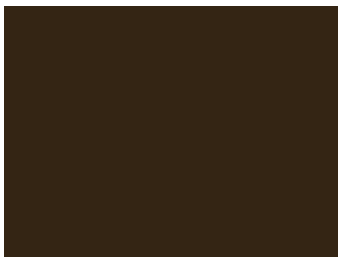
TRIATHLON GREY



PACIFIC BLUE<sup>a</sup>



ULTRA BLACK



COFFEE BEAN<sup>a</sup>

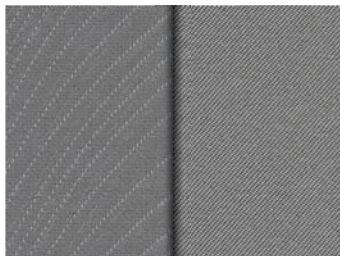


VITAMIN C<sup>a</sup>  
(5-door models only)

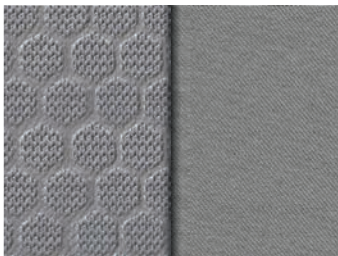


BOSTON RED<sup>a</sup>

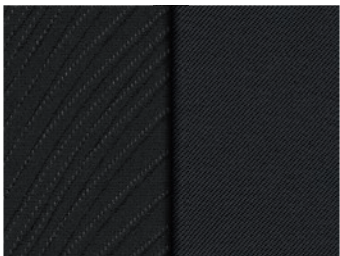
INTERIOR



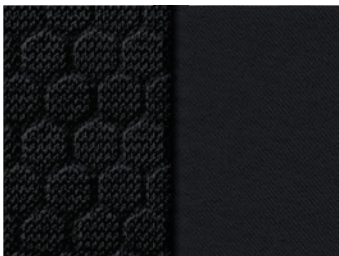
GREY CLOTH  
4-door L & GL



GREY PREMIUM CLOTH  
4-door GLS



BLACK CLOTH  
5-door L & GL



BLACK PREMIUM CLOTH  
5-door GLS

WHEELS



*L and GL Wheel*



*GLS Wheel*

Choice of interior colour depends upon exterior colour and/or model selection. Due to print production process, the colours shown throughout this brochure may vary slightly from the actual hue. Visit [hyundaicanada.com](http://hyundaicanada.com) or see your dealer for details. Colours and textures may not be exactly as shown. <sup>a</sup>Not available on L models.



# ACCENT ACCESSORIES

## REAR SPOILER.

Add a touch of style and sportiness to your vehicle with an aerodynamic rear spoiler.



## CARGO NET.

A custom-fit cargo net ensures everything you're transporting remains organized and in place by preventing items from sliding around.



## MUD GUARD KIT.

Custom-fit mud guards help keep the dirt and debris of everyday driving where it belongs.



## CARGO TRAY.

Add years to the interior of your Hyundai by protecting it from spills and messy loads with a durable, custom-fit cargo tray.



## ACCESSORY FRAME.

An accessory frame makes it quick and easy to attach hitch-mounted cargo equipment, such as bikes and ski racks. Frame not intended for towing.



## REMOTE ENGINE STARTER.

Leaving the house on winter mornings doesn't have to be an unpleasant experience. Equip your Hyundai with a remote engine starter and get on the road in comfort. Complete with a factory style remote, this feature is fully integrated with your vehicle alarm system (A/T only).



## SIDE VISORS.

Complement your vehicle with a sleek and durable set of side visors that will help reduce glare while providing you with fresh air. Custom made for your vehicle using high quality reinforced tinted acrylic plastic, these visors will look good on your vehicle for years to come.



## ALL WEATHER FLOOR LINERS.

Protect the interior of your Hyundai with the most advanced floor protection available. These front floor liners feature raised edges to protect your carpet from dirt, rain, slush and snow. Designed to snap in using the factory carpet retention pins, these floor liners will protect your carpeting for years to come. Remove carpet mats prior to installation.



## PLASTIC HOOD PROTECTOR.

Help prevent dents and scratches caused by road and vehicle debris with an attractive plastic hood protector.



## AIR CONDITIONING.

Stay cool all summer long with factory air conditioning.



# ACCENT SPECIFICATIONS

4-DOOR / 5-DOOR L		STANDARD EQUIPMENT INCLUDES:
1.6L GDI engine		Driver's seat armrest
6-speed manual transmission		Airbags¹ (6): Dual front, front seat-mounted side impact and roof-mounted side curtain
14" steel wheels with full cover		
4-wheel disc brakes		ECO shift indicator (M/T only)
60/40 split rear seats (5-door model only)		Electronic Stability Control system (ESC) with Traction Control System (TCS)² and Vehicle Stability Management (VSM)
AM/FM/CD/MP3 audio system		Front active head restraints
iPod®/USB/Auxiliary input jacks		Rear spoiler (5-door model only)
Anti-lock Braking System (ABS) with Electronic Brake-force Distribution (EBD) and Brake Assist (BA)		Rear garnish (5-door model only)
Driver and front passenger vanity mirror		Sliding sun visor
Driver's seat height adjustment		Trip computer
4-DOOR / 5-DOOR GL		INCLUDES STANDARD L EQUIPMENT PLUS:
6-speed automatic transmission with active ECO system (4-door model only)		Manual air conditioning
60/40 folding rear seats		Power heated exterior mirrors
AM/FM/SiriusXM™/CD/MP3 audio system		Power windows with driver's side auto up/down
Bluetooth® hands-free phone system with voice recognition		Steering wheel-mounted audio and cruise controls
Cloth interior door trim		Sunglass holder
Deluxe centre console with armrest		Telescopic steering wheel
Heated front seats		Optional: 6-speed automatic transmission with active ECO system for 5-door model
Keyless entry with panic alarm		
4-DOOR / 5-DOOR GLS		INCLUDES STANDARD GL EQUIPMENT PLUS:
16" alloy wheels		Projection headlights with LED daytime running lights
Automatic temperature control		Side mirror-mounted turn signals
Auto light control		Power sliding sunroof
Matte chrome-coated interior door handles and parking brake button		Welcome and escort function headlight
Fog lamps		Optional: 6-speed automatic transmission with active ECO system for 5-door model
Leather-wrapped steering wheel and gear shift knob		

Accent 4DR		Accent 5DR
ENGINE DETAILS		
Type	1.6L (1,591cc) DOHC Inline 4-cylinder	1.6L (1,591cc) DOHC Inline 4-cylinder
Engine family	Gamma	Gamma
Cam design	D-CVVT	D-CVVT
Valve train	16-Valve	16-Valve
Configuration	Transverse	Transverse
Block/head composition	Aluminum	Aluminum
Horsepower @ RPM	138 @ 6,300	138 @ 6,300
Torque (lb-ft) @ RPM	123 @ 4,850	123 @ 4,850
Bore & stroke (mm)	77.0 x 85.44	77.0 x 85.44
Compression ratio (:1)	11.0:1	11.0:1
Fuel delivery	Gasoline Direct Injection (GDI)	Gasoline Direct Injection (GDI)
Recommended fuel	Unleaded	Unleaded
Exhaust	Single	Single
Emissions system	ULEV	ULEV
Hood insulator	Standard	Standard
ELECTRICAL		
Ignition system type	Distributorless	
Starter rating	0.9kw	
Battery rating	36AH	
Alternator rating	13.5V 90A	
BRAKING		
Type	Anti-lock Braking System (ABS) with Electronic Brake-force Distribution (EBD)	
Front	10.1" / disc	
Rear	10.3" / disc	
Parking brake	Mechanical	
STEERING		
Type	Rack and Pinion Motor Driven Power Steering (MDPS)	
Overall ratio (:1)	14.9	
Turns (lock to lock)	2.9	
Turning diameter (m)	10.4	
SUSPENSION		
Front / Rear	MacPherson strut with coil spring	
BODY / CHASSIS		
Type	Unibody	
Primary materials	High tensile steel	
Drag coefficient (cd)	0.28	
WEIGHT		
Curb weight MT / AT (kg)	1,125 / 1,155 – 1,180	1,129 – 1,155 / 1,159 – 1,195
Gross weight MT / AT (kg)	1,600 / 1,600	1,610 / 1,610
VOLUME (LITRES)		
Passenger compartment	2,539	2,552
Cargo-trunk	389	600
Total	2,928	3,152
CAPACITIES		
Fuel tank (L)	43	
FUEL ECONOMY (L/100KM)^ – 5 CYCLE TESTING METHOD		
City (MT / AT)	8.7 L/100 km / 8.9 L/100 km	
Highway (MT / AT)	6.3 L/100 km / 6.3 L/100 km	
Combined (MT / AT)	7.6 L/100 km / 7.7 L/100 km	

For more detailed specifications and information please visit [hyundaicanada.com](http://hyundaicanada.com), or visit your dealer today.



• = Standard    - = Not Available    ◦ = Optional

		L	GL	GLS
PERFORMANCE				
Engine and Transmission	1.6L (1,591 cc) GDI DOHC Inline 4-cylinder	•	•	•
	Hood insulator	•	•	•
	Exhaust, single	•	•	•
	6-speed manual (4-door / 5-door)	•	-/•	-/•
	6-speed automatic with OD lockup torque converter, gate type, electronic shift lock system (4-door / 5-door)	-	•/◦	•/◦
EXTERIOR				
Wheels and tires	14" x 5.0J steel	•	•	-
	16" x 6.0J aluminum alloy	-	-	•
	P175/70TR14	•	•	-
	P195/50HR16	-	-	•
	Spare tire	•	•	•
Exterior lighting	Headlights with escort function	-	-	•
	Automatic headlights	-	-	•
	Fog lights	-	-	•
	Projection headlights with LED daytime running lights	-	-	•
	Centre High Mount Stop Lamp (CHMSL)	•	•	•
Outside mirrors	Power adjustable, heated	-	•	•
	Body colour	•	•	•
	Integrated turn signal indicators	-	-	•
Moldings and trim	Bumpers (front & rear), body colour	•	•	•
	Grille, chrome accents	•	•	•
	Door handles, body colour	•	•	•
	Rear garnish, chrome (5-door only)	•	•	•
	Window belt moulding, black	•	•	•
Glass	Tinted glass	•	•	•
	Wipers	•	•	•
Other	Rear wiper with washer, 1-speed (5-door only)	•	•	•
	Sunroof, power glass-tilt & slide, safety one-touch	-	-	•
INTERIOR				
Seating	Seating surfaces, cloth	•	•	-
	Seating surfaces, premium cloth	-	-	•
	Front seats, 6-way adjustable driver seat with adjustable head restraint	•	•	•
	Front seats, 4-way adjustable front passenger seat with adjustable head restraint	•	•	•
	Front seats, driver's seat height adjuster (pump device)	•	•	•
	Front seats, passenger seatback pocket	•	•	•
	Front seats, heated seats	-	•	•
	Rear seats, 60/40 split-folding rear seatback with adjustable head restraints (3) (4-door / 5-door)	-/•	•	•
Audio	AM/FM/CD/MP3 audio system with four speakers	•	-	-
	172 Watts AM/FM/SiriusXM™/CD/MP3 audio system with six speakers	-	•	•
	iPod®/USB and MP3 auxiliary input jacks	•	•	•
	Antenna, AM/FM micro antenna (roof-mounted)	•	-	-
	Antenna, integrated AM/FM/SiriusXM™ micro antenna (roof-mounted)	-	•	•
	Bluetooth® hands-free phone system with VR & steering-mounted audio controls	-	•	•
Interior	Door trim, cloth inserts	-	•	•
	Door handles, chrome	-	-	•
	Sun visors with driver & passenger extensions	•	•	•

		L	1G	GLS	
INTERIOR (continued)					
HVAC	Air conditioning, A/C pre-wiring	•	-	-	
	Air conditioning, manual climate control	-	•	-	
	Air conditioning, automatic temperature control	-	-	•	
Steering wheel	Leather-wrapped	-	-	•	
	Tilt	•	•	•	
	Telescopic	-	•	•	
	Audio controls	-	•	•	
	Cruise control	-	•	•	
	Bluetooth® controls with voice command	-	•	•	
	Convenience features	Trip computer (distance to empty, avg. fuel consumption, avg. vehicle speed, elapsed time)	•	•	•
Cruise control (steering wheel-mounted)		-	•	•	
Power windows, front		-	•	•	
Power windows, rear		-	•	•	
Power windows, driver's side auto up/down		-	•	•	
Power door locks, 2-turn unlock, inside handle override		•	•	•	
Remote keyless entry system with panic alert		-	•	•	
Front centre console (sliding armrest storage box)		-	•	•	
Sunglass holder		-	•	•	
Cup holders, dual, front centre console		•	•	•	
12-Volt outlet, centre-stack mounted		•	•	•	
iPod®/USB/Aux input jacks (below HVAC controls)		•	•	•	
SAFETY					
Passenger restraint system		Airbags, driver & front passenger – advanced type	•	•	•
	Airbags, Occupant Classification System (OCS)	•	•	•	
	Airbags, driver & front passenger side impact	•	•	•	
	Airbags, side air curtains (front & rear passengers)	•	•	•	
	Front seats, 3-point seatbelt	•	•	•	
	Front seats, front adjustable shoulder belt height	•	•	•	
	Front seats, front seatbelt pretensioners	•	•	•	
	Rear seats, 3-point seatbelt, all positions	•	•	•	
	LATCH lower anchors and upper tether anchors for children	•	•	•	
	Child safety locks (rear)	•	•	•	
EXTERIOR DIMENSIONS (MM)		ACCENT 4DR	ACCENT 5DR		
Wheelbase		2,570			
Overall length		4,370	4,115		
Overall width		1,700			
Overall height		1,450			
14" Tread width (front/rear)		1,507 / 1,511			
16" Tread width (front/rear)		1,489 / 1,493			
Minimum ground clearance		140			
INTERIOR DIMENSIONS (MM)					
Head room (front/rear)		1,014 / 946			
Leg room (front/rear)		1,062 / 846			
Hip room (front/rear)		1,304 / 1,198			
Shoulder room (front/rear)		1,364 / 1,356			





[hyundaicanada.com/accent-sedan](http://hyundaicanada.com/accent-sedan)

[hyundaicanada.com/accent-5-door](http://hyundaicanada.com/accent-5-door)

™/®The Hyundai names, logos, product names, feature names, images and slogans are trademarks owned by Hyundai Auto Canada Corp. Specifications, features, illustrations, accessories, materials and equipment and all other information shown in this brochure are based on the latest information available at the time of publication. Although descriptions are believed to be correct, accuracy cannot be guaranteed. Hyundai Auto Canada Corp. reserves the right to make any changes or modifications at any time, without notice or obligation, including, without limitation, in colour, specifications, features, accessories, materials, equipment and models. Some vehicles are shown with optional equipment. All Hyundai warranties have no deductible. <sup>A</sup>Fuel economy figures are based on manufacturer testing and are used for comparison purposes only. Actual fuel efficiency may vary based on driving conditions and the addition of certain vehicle accessories. <sup>1</sup>Hyundai's Comprehensive Limited Warranty coverage covers most vehicle components against defects in workmanship under normal use and maintenance conditions. <sup>2</sup>Hyundai's 24-Hour Roadside Assistance Program is a limited service and does not cover certain costs or expenses. Roadside Assistance is not a warranty. <sup>3</sup>The Supplemental Restraint (Airbag) System (SRS) is designed to work with the 3-point seatbelt system. The SRS deploys in certain frontal and/or side impact conditions where significant injury is likely. The SRS is not a substitute for seatbelts, which must still be worn at all times. Children under the age of 13 should be securely restrained in the rear seat. NEVER place a child seat in the front seat of a Hyundai vehicle. <sup>4</sup>Electronic Stability Control (ESC) and Traction Control System (TCS) are meant to enhance conscientious driving habits and are not a substitute for safe driving practices. ESC cannot control your vehicle's stability under all driving situations. No system, no matter how advanced, can overcome physics or correct poor driving. Speed, road conditions and driver steering input will affect whether ESC can help prevent loss of control. See Owner's Manual for details. iPod® is a registered trademark of Apple Inc., the SiriusXM™ name is a trademark of SiriusXM Satellite Radio Inc., Bluetooth® word mark and logos are registered trademarks owned by Bluetooth SIG, Inc., and any use of such marks by Hyundai is under license. All other trademarks and trade names are those of their respective owners.



[facebook.com/hyundaicanada](https://facebook.com/hyundaicanada)  
[youtube.com/hyundaicanada](https://youtube.com/hyundaicanada)  
[instagram.com/hyundaicanada](https://instagram.com/hyundaicanada)  
[twitter.com/hyundaicanada](https://twitter.com/hyundaicanada)