



New Generation
Hyundai i10





New Thinking. New Possibilities.



We, at Hyundai, are inspired by the passion to create cars that exceed your expectations. Dedicated to the way things should be, not the way they are. Looking for answers before the questions have been asked. We never stop searching for better solutions that help you get more out of life. It's just the way we are.

What does this mean for you? It means that the Hyundai you drive has been engineered to surprise you with its built-in integrity. To compliment you with its crisp fluid design. To care for you, and passengers with its embracing strength, and to minimize its impact on the environment. All of this being the product of new thinking that opens up a world of new possibilities.





Specification may vary, please contact your main Hyundai dealer for more information.



Your life. Your city. Your car

You're looking at the city car that brings new levels of style and sophistication to the city streets. The new Hyundai i10. One look is enough to tell you that this car has been designed and engineered in Europe. It's also built in Europe, and is available with features and equipment that you'd normally associate only with larger, more expensive cars. Because it's your life, and we want to make it as enjoyable and fulfilling as possible.



A wake-up for the streets

The athletic stance of the new i10 is the result of its perfectly balanced, dynamic proportions. It looks wider and lower than other cars in this class and it boasts a truly sporty profile combined with the crisp, signature styling lines that typify our “Fluidic Sculpture” design philosophy. The i10 has exactly what it takes to turn heads on every street.

Specification may vary, please contact your main Hyundai dealer for more information.



The image shows the front interior of a car. The dashboard is black with a large red leather-trimmed panel in the center. There are two circular air vents on the dashboard. To the right, there is a digital display showing '13: Saturday' and '13:'. Below it are buttons for 'MEDIA', 'PHONE', and 'WEEK TRACK'. Further down are buttons for 'E', 'S', and '4'. At the bottom right, there is a circular control knob and a digital display showing '2'. The steering wheel is partially visible on the left, and the gear shift is partially visible on the right. The background shows a blurred view of a street with a motorcycle and a car.

Your personal upgrade

Whatever the length of your journey, you'll appreciate the attention to detail that's evident inside the new i10. High quality materials have been selected not only to look good, but also feel good too. The elegant "white on blue" information on the LCD screens is easier to read in daylight or at night and all controls - including those of the multifunction steering wheel* - have been sited for easy, intuitive use.



Specifications/Colours may vary. Please consult your main Hyundai dealer for more information.
*Multi-functional steering wheel available on Deluxe model only.



Specifications/Colours may vary. Please consult your main Hyundai dealer for more information.

Indulge yourself

We asked ourselves why many features are not available in small city cars, and decided that there's no good reason. The new Hyundai i10 is available with a range of useful and convenient features. There's also lots of room and the feeling of comfort and safety you'd expect only in larger cars.



Cruise control with speed limiter. For stress-free driving on longer journeys. (Deluxe and Premium Models only)



Bluetooth connectivity. Steering wheel mounted controls for safe, effortless telephone operation. Bluetooth also enables access to your favourite music via audio streaming. (Deluxe model only)



USB & AUX. Easy connectivity for your iPod or other MP3 device, just plug-in and play.



Audio controls. Adjust volume and change stations or tracks with ease. (Deluxe model only)





Image for display purposes only. Specifications may vary.
Please consult your main Hyundai dealer for more information.



Everything in its place

And a place for everything. No other car in this class has as much useful cabin storage space as the i10. It's the only car in its class that can store a 1-litre water bottle in the front door map pockets. The whole interior has been designed to be as user-friendly as possible, with easy-access storage places just where you need them, including an additional storage drawer under the passenger seat.



The front door pockets have been specially designed to accommodate 1-litre water bottles



Between the front seats are 2 cup holders, one of which is large enough for a 1-litre water bottle.



In the Deluxe model, the practical glove box is also conveniently illuminated.



The central storage bin is conveniently located just in front of the gear shifter.



As big as your life

Not only is the cabin the roomiest in its class, the boot is also a class winner. With all seats in use, the luggage capacity is 252 litres. Fold the rear seats down and that capacity expands to an impressive 1046 litres. So there's lots of room for carrying whatever your city life demands.



The load cover protects belongings from prying eyes, and lifts with the hatch for easy loading and unloading.



There are 252 litres of useful space behind the rear seats.



For added convenience and flexibility, the rear seats fold separately in the proportion 60:40.



With all rear seats folded, the carrying capacity expands to a class-beating 1046 litres.



Specification may vary, please contact your main Hyundai dealer for more information.



Electronic Stability Control (ESC). Sensors monitor speed and yaw data, applying variable braking to individual wheels to prevent uncontrolled skidding in extreme driving situations

Vehicle Stability Management (VSM). Coordinates the ESC and Motor-Driven Power Steering (MDPS), adding subtle steering inputs to maintain stability through corners, in sudden lane changes and on surfaces with unequal grip.

Making the city safer

It's important to us that you feel comfortably safe in your i10. It is built around a tough safety cell using high-strength steels, while 6 airbags are provided to protect all occupants. Electronic Stability Control (ESC), Vehicle Stability Manager (VSM), Anti-lock Brakes (ABS) and Tyre Pressure Monitor System (TPMS) combine to keep you out of trouble on the move, and Hill-start Assist Control (Deluxe model only) eliminates rolling back on steep hill starts. There are seat-belt reminder warnings for all seats, and the front cowling has been designed to minimize injury to pedestrians. That's a huge amount of safety engineering for such a small car.



Height-adjustable seatbelts. Safety that also increases comfort.
Deluxe model only.



Hill-start Assist Control (HAC). Starting on hills has never been easier. HAC briefly applies the brakes to stop the i10 rolling back when moving off. Standard on the Deluxe model.



6 airbags. Two front airbags, two side airbags and two curtain airbags for all-round occupant protection.





Specification may vary, please contact your main Hyundai dealer for more information.

A pleasure to drive

However large or small, we believe that every Hyundai should reward its driver with a satisfying and comfortable driving experience. And that applies to all journeys, no matter how long or how far, so travelling in the new i10 feels like driving in a larger car. We've developed optimized suspension front axle geometry that delivers enhanced steering precision and feedback. The rear axle has also been engineered to provide superior ride and handling.

Our refined engine and transmissions have been developed in Europe to give you all the performance you need combined with low fuel consumption and low emissions.

The 1.0 Kappa MPI with 66PS (48.5kW), features continuously Variable Valve Timing (CVT) and maintenance-free timing chain.



Transmissions. There's a precise 5-speed manual transmission, or you could choose our smooth-changing 4-speed automatic. Whichever you choose, the gear change is located conveniently high for ease of operation.







i10

The i10 Classic model is available with the following as standard:

- 6 Airbags
- Tyre Pressure Monitoring System (TPMS)
- Seatbelt Reminder in all seats
- Driver Side Anchor Pretensioner
- Speed & Impact Sensing Auto Door Unlock
- Central Locking
- Body Colour Bumpers
- Tinted Windows and Windshield
- Front Power Windows
- Beige/Black Interior
- Semi-Cloth Seats
- 14" Steel Wheels with full Cover
- Height Adjustable Steering Wheel
- 12 V Socket
- Front Assist Grip
- Day/Night Rear Mirror
- Trip Computer
- 60:40 Split folding Seats
- Radio + USB + CD + MP3 + RDS + iPod

The i10 Deluxe model encompasses all the specifications of the Classic and is also available with the following as standard:

- Body Colour Side Mirrors and Door Handles
- Front & Rear Power Windows
- Full Cloth Seats
- Battery Saver
- Front & Rear Assist Grip
- Seat Back Pockets
- Height Adjustable Driver Seat
- Blue/Black or Orange/Black Interior
- Electric Heated/ Adjusted Side Mirrors
- 14" Alloy Wheel
- Leather & Chrome Steering wheel & Gear Knob
- Seat Belt Height Adjuster
- Side Mirror Repeater
- Cornering Lamps
- Bluetooth with Voice Recognition
- Safety Window (Drivers Side)
- LED Lights
- Manual Air Conditioning
- Cruise Control with Speed Limiter
- Keyless Entry

The i10 Premium encompasses all the specifications of the Deluxe and is also available with the following as standard:

- 15" Alloy Wheels
- Climate Control
- Rear Parking Sensors

*Specifications may vary. Please consult your main Hyundai dealer for more information.

Two kinds of i10

We're all different, with different ideas and preferences. So we've created two different versions of the new i10 for you to choose from.

CLASSIC: simplicity itself

If it's the simple things in life that excite you most, then the new i10 Classic model is for you. It's a safe, functional car that helps you get on with your city life.

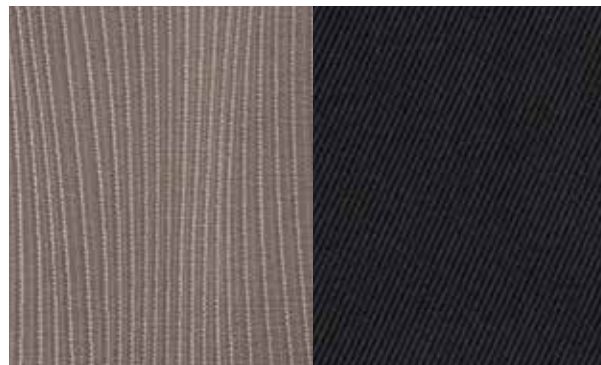
- Interior colour highlights in beige
- Seats in a beige/black fabric combination

DELUXE: all you need

There's far more standard equipment that you'll need to enjoy any journey, long or short.

- Interior colour highlights in either blue or orange
- Seats in either a blue/black fabric or orange/black fabric combination, to match Interior colour highlights
- Body colour door mirror caps and door handles
- Black b-pillars
- Radio CD MP3 with USB

Seats Material

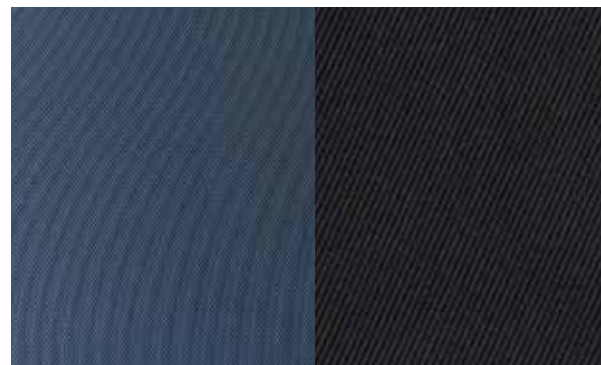


CLASSIC Beige/Black

Interior colour highlights



Beige



DELUXE Blue/Black



Blue

Specifications/colours may vary. Please consult your main Hyundai dealer for more information.

Wheels



14" 5-twin-spoke Design
wheelcover (metallic grey)



14" 8-spoke Design
alloy wheel (metallic grey)

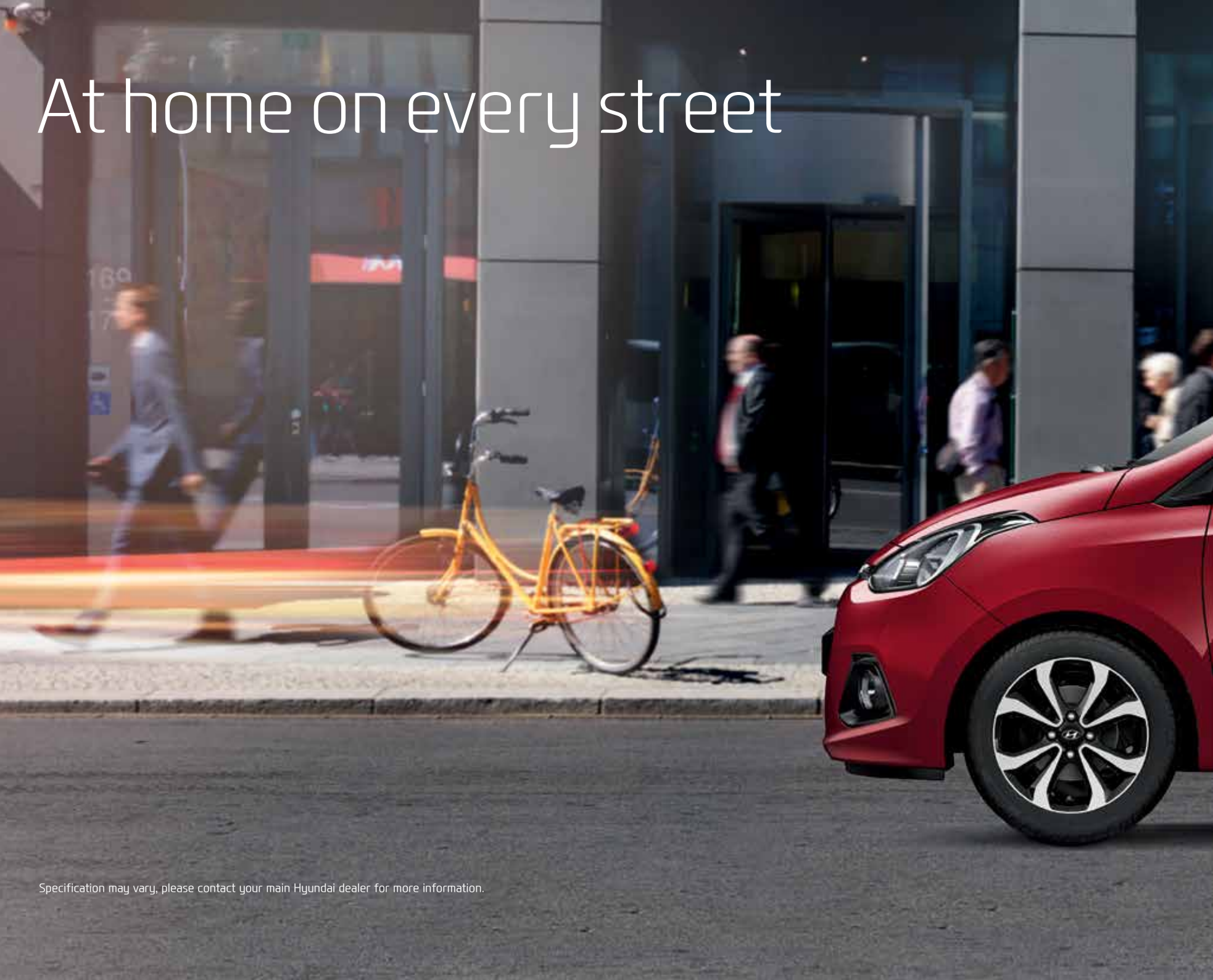
Hyundai Glasscoat



Protecting your car inside and out has never been easier with Hyundai Glasscoat paint, alloy wheel and fabric protection package. Your vehicle will retain that showroom finish long after you've driven off the forecourt.



At home on every street



Specification may vary, please contact your main Hyundai dealer for more information.



The choice is yours

Combine your selection of exterior colour, wheels and interior fabrics to create your ideal new i10.



Phantom Black



Aqua Sparkling



Polar White



Cashmere Brown



Sleek Silver



Stardust



Mandarin Orange



Red Passion



Morning Glory

Hyundai G3 Glasscoat*

This revolutionary product once applied by our specialists gives your car a ceramic-hardened glass finish to protect paintwork and wheels – so that your car stays visibly cleaner for longer.

* Available as an option



The numbers that count

Here you'll find the important numbers and values that define the new generation i10.

ENGINE	1,0 Kappa	
TRANSMISSION	5 MT	4 AT
DISPLACEMENT (cc)	998	998
BORE x STROKE (mm)	71.0 x 84.0	71.0 x 84.0
CAM TYPE	DOHC, Dual-CVVT	DOHC, Dual-CVVT
COMPRESSION RATIO	10.5	10.5
MAX. POWER (ps/rpm)	48.5 kW (66 PS) 5500 rpm	48.5 kW (66 PS) 5500 rpm
MAX. TORQUE (kgf.m/rpm)	95.16 Nm (9.7 kgf.m) 3500 rpm	95.16 Nm (9.7 kgf.m) 3500 rpm
BRAKES		
TYPE	Hydraulic Brake	Hydraulic Brake
SUSPENSION		
FRONT	Mcpherson Strut	Mcpherson Strut
REAR	Coupled Torsion Beam Axle (CTBA)	Coupled Torsion Beam Axle (CTBA)
SAFETY		
STANDARD	ABS, ESC + Vehicle Stability Management (VSM), Front Airbags, Side Airbags, Curtain Airbags	
STEERING		
TYPE	MDPS	MDPS

*Alloy wheel available on Deluxe model as standard or as an accessory option

WHEEL & TYRE	1.0 / 5 MT	1.0 / 4 AT
WHEEL	5.5J x14 Steel Wheel *5.5J x14 Alloy Wheel	5.5J x14 Steel Wheel *5.5J x14 Alloy Wheel
TYRE	175/65R14	175/65R14
CAPACITIES		
LUGGAGE SPACE (Litre, VDA) min. / max.	252 / 1046	252 / 1046
WEIGHT		
CURB WEIGHT (kg)	933 - 1008	952 - 1014
GROSS VEHICLE WEIGHT (kg)	1420	1440
PERFORMANCE		
MAX SPEED (kmh)	155	145
ACCELERATION 0 → 100 kmh (sec)	14.9	16.8
CO2 EMISSIONS COMBINED (g/km)	106 - 108	134 - 137

DIMENSIONS



- Some of the equipment illustrated or described in this catalogue may not be supplied as standard equipment and may be available at extra cost.
- Hyundai Cars Ireland reserves the right to change specifications and equipment without prior notice.
- The colour plates shown may vary slightly from the actual colours due to the limitations of the printing process.
- Please consult your dealer for full information and availability on colours and trims.
- Please consult your dealer/www.hyundai.ie for details on wheel energy efficiency rating

Accessories



Blue LED Lighting Footwell Area
Part number: 99650ADE00



Entry Guards, Front & Rear
Part number: E84500X000



Wind Deflectors (Front)
Part number: B9221ADE00



Suit Hanger
Part number: 99770ADE00



iPad Holder
Part number: 99582ADE00



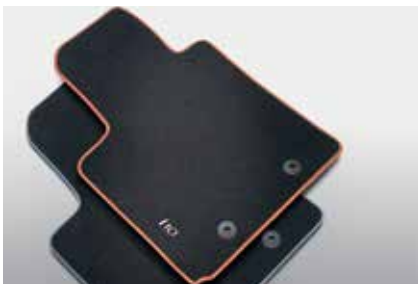
Trunk Liner
Part number: B9122ADE00



Rear Bumper Protection
Black: Part number: B9272ADE00BL
Trans: Part number: B9272ADE00TR



Textile Floor Mats (Velour)
Part number: B9143ADE10 (Black)



Textile Floor Mats with Colour Trim
Part number: B9143ADE10BLB (Blue)
Part number: B9143ADE10RGB (Orange)



All Weather Floor Mats
Part number: B9131ADE10



Safety Bag
Part number: 99940ADE00



14" Alloy Wheel (Songdo)
Part number: B9400ADE00 (TPMS Compatible)

THE FUTURE IS CERTAIN.

Your Hyundai i10 is built to the highest quality standards. To ensure your complete satisfaction, we also offer our highest level of warranty protection: the 5-Year Unlimited Mileage Warranty that reflects our commitment to long-term quality assurance and customer care.



5-YEAR UNLIMITED MILEAGE WARRANTY

Your 5-year unlimited mileage* warranty provides bumper to bumper coverage, including powertrain, plus a 12-year anti-perforation warranty. Your warranty is valid in 26 countries across Europe, excluding Russia, Croatia, and Ukraine.

Vehicles used for taxi or rental car purposes are covered by a 3-year, 100,000 km warranty.

CARE & RELATION

► The promise of a generous brand that cares about consumer needs, listens to feedback, and is keen on understanding how it can make a difference to people's lives.



5-YEAR ROADSIDE ASSISTANCE

As part of Hyundai's commitment to aftersales excellence, we have teamed up with AA Ireland offering you Hyundai Assist Roadside Assistance.

STRESS-FREE

► A commitment to improve the quality of the ownership experience over time.



5-YEAR VEHICLE HEALTH CHECK

In addition to your annual main service maintenance, your Hyundai dealer will perform a check on key elements of your i10, including engine, transmission, steering, suspension, and brake systems, during your 5-year warranty period.

RELIABLE

► A reassurance over Hyundai's quality product, aimed at reducing perceived risks and lowering barriers to consideration.

Hyundai is constantly focused on understanding the changing needs of our customers. This is why we carefully listen to your feedback, and never stop the search for new ways to increase your long-term satisfaction as a Hyundai owner.

We hope our 5-Year Warranty package shows our commitment, appreciation, and focus on ensuring a reliable premium ownership experience. Together with our dealers across Ireland, we look forward to serving you, and exceeding your expectations each time you turn to us.



With you all the way

Driving your new i10 away from the showroom is just the start of a long and happy relationship. We've prepared a number of programmes to make sure that it stays that way.

5 Year Triple Care Unlimited Mileage Warranty

Living proof of our faith and trust in our products is our 5-year new vehicle warranty. You enjoy 5 years carefree driving, 5 years roadside assistance and 5 years annual vehicle health checks to keep your driving trouble-free. All without any mileage restrictions.

Hyundai Loyalty Programme

As an owner of a Hyundai, you will have access to this exclusive portal. It opens the door to a world of special offers you won't find anywhere else, the latest news about Hyundai, and it provides a secure zone for the storage of your important vehicle details. Automatic reminders for servicing and vehicle health checks can also be set here. It all makes owning and driving your Hyundai an enjoyable and hassle-free experience.

Finance

Hyundai can help you finance the purchase of your new Hyundai over periods of up to 5 years. Our finance plans can be very flexible - just ask your dealer for detailed information, and choose the plan that suits you best.

12-year Anti-perforation Warranty

In addition to our 5-year new vehicle warranty, we also provide a 12-year warranty against perforation of the bodywork from the inside.

Hyundai Genuine Accessories

Nothing fits better than a Hyundai Genuine Accessory. They are designed and engineered to enhance the looks and capabilities of your i10, and meet the rigorous manufacturing standards demanded of all Hyundai products.

Hyundai Genuine Parts

Produced to the same exacting standards as original equipment, our genuine replacement parts are covered by comprehensive warranties.



Hyundai Cars Ireland
Hyundai House,
JFK Drive, Naas Road,
Dublin 12.

Tel: 01 460 9800
Email: info@hyundai.ie
www.hyundai.ie

