

TUCSON

2019 Hyundai





The 2019 Tucson: New and improved in all the right places.

They say the only constant is change. And that's certainly true when it comes to automobiles. Every year, new models with new features compete for your attention. But how do you know if what's "new and improved" is really new? And improved?

Start by looking for a Hyundai badge like the one on the new 2019 Tucson. While it may be new for 2019, Tucson sports an impressive resume. J.D. Power named the 2018 Tucson its "Highest Ranked Small SUV in Initial and Long-Term Quality".¹ Kelley Blue Book ranked Hyundai as having the lowest 5-year Cost to Own of all automotive brands.² And for the ninth consecutive year, Brand Keys has ranked Hyundai #1 in customer loyalty.³

Qualities like dependability, low cost of ownership and brand loyalty might not push the needle on everybody's excitement meter, but don't worry. Our designers gave the new Tucson plenty of pulse-quickeners. Imagined at our European Design Centre, the 2019 Tucson's sportier, sleeker lines reflect the unique sensibilities found in that continent's most intelligently conceived and meticulously crafted products.

Tucson's exterior dimensions might be compact, but there's clearly no shortage of style. New available LED headlights and taillights create striking lighting patterns. Inside, Tucson's spacious interior is flush with modern conveniences and advanced safety technologies. That's progress, the Hyundai way.



Hyundai Tucson
"Highest Ranked Small SUV in
Initial and Long-Term Quality"



¹Initial Quality is based on 2018 models. Long-term evaluation of three-year-old vehicle dependability is based on 2015 model-year vehicles. For J.D. Power award information, go to jdpower.com/awards. ²2018 model-year vehicles' projected cost to own for the initial five-year ownership period is based on the average Kelley Blue Book 5-Year Cost to Own data, which considers depreciation and costs such as fuel and insurance. For more information, visit www.kbb.com. ³Based on 2010, 2011, 2012, 2013, 2014, 2015, 2016, 2017 and 2018 Brand Keys Customer Loyalty Engagement Index[®].

TUCSON Ultimate in Gemstone Red



¹The hands-free smart liftgate will open when your Proximity Key is within 3 feet of the detection area for at least 3 seconds. Radio transmitters and other vehicle smart keys may interfere with normal operation. Please consult your Owner's Manual for details. ²Standard on all models except Tucson SE.

To raise the standards, we transformed the liftgate.

For too long, sport utes have made opening the rear liftgate its own form of key-fob-in-right-hand, grocery-bags-in-left gymnastics. No longer. The Tucson is available with the segment's most innovative automatic hands-free smart liftgate, which includes a feature that lets you set the opening height to adjust for low overhangs.¹ The best part is what Tucson's liftgate opens to: 60/40 split-folding rear seats, a height-adjustable cargo floor, and even a special spot to safely stow the removable cargo cover. Tucson's spacious interior has the perfect place for practically everything – starting with you and your passengers.

Whether you choose available ventilated leather seating surfaces or the segment's first stain-resistant cloth seating, comfort rules. Tucson's comfort zone even expands to the rear seats with adjustable recline and, on Tucson Ultimate, heated rear seats. No matter where you sit, the position is high and the view commanding.

Every button and knob you see, touch or control is easily accessible and conveys precision. That's especially true of the new floating display screen, your command center for the audio and available navigation and connected car systems. Set the climate controls to your preferences, adjust the 8-way power driver seat with power lumbar support² to your liking...and enjoy the quiet, comfortable drive. In the new Tucson, your spirits – and your standards – will be raised.

Hearing Is Believing

Downloadable music and streaming services compress data. That's good for speed, but bad for sound. The solution? Clari-Fi™ Music Restoration Technology. Tucson's available Infinity® Premium Audio system uses it to restore the fullness lost in compressed music files.

Maps, Music And More

The Tucson Ultimate's 8" touchscreen navigation features an enhanced split-screen display that lets you keep an eye on your maps and music simultaneously. Junction view lane guidance is augmented by real-time traffic flow and incident updates via HD Radio™ (no subscription required).

Warmest Regards

Frost in your forecast? Tucson chases the chill with available heated front seats, heated rear seats, heated side mirrors and a heated steering wheel. At the first drop of rain or snow, your windshield is cleared automatically by rain-sensing wipers.



8-Speaker
Infinity®
Premium
Audio

Infinity
CLARIFI





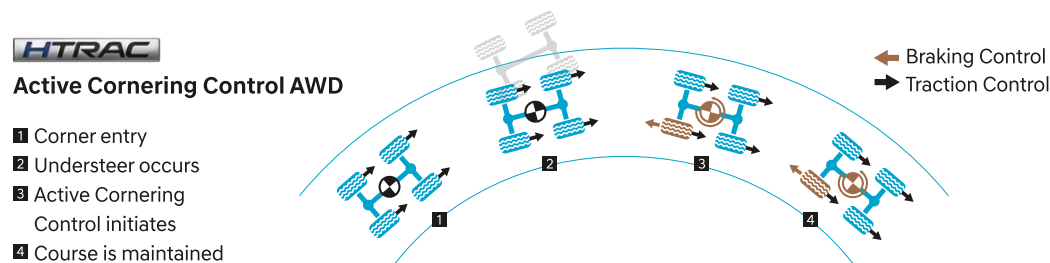
TUCSON Ultimate in Aqua Blue

Tucson. It puts the you in SUV.

Sport Utility Vehicles tend to focus on two things: There's Sport – traversing rugged terrain around and out of town. Then there's Utility – hauling bulky items in a versatile cargo area. What's missing from all of this, of course, is a focus on you and your passengers. That's where Tucson excels. Hyundai designed it around your desire for an SUV that's not only rugged, but refined. With room not just for cargo, but for comfort and camaraderie, too.

The new Tucson is so quiet, you may think you're driving an upscale sedan. Accelerate from a stop, and the response of its 6-speed automatic transmission is hushed like a luxury car, but responsive like a sporty car. And there's no odd sensation of rubbery imprecision that drivers feel with some competitors' CVT transmissions. Take a corner, and Tucson's independent multi-link rear suspension balances nimble handling with a smooth ride.

Prod the accelerator with your right foot, and the response of its 2.4L GDI 4-cylinder engine is unmistakably powerful – yet it sips fuel like an economy car. And thanks to the availability of advanced electronic All Wheel Drive with Downhill Brake Control and a choice of 17", 18" or 19" alloy wheels, Tucson delivers reassuring traction. Engage the system's driver-selectable AWD lock, and torque is split evenly between the front and rear wheels for added confidence in heavy snow, ice or other low-traction road conditions.



Driving A La Mode

Drive Mode Select lets you choose between Normal and Sport driving dynamics to satisfy your mood as well as changing traffic and road conditions. At the simple press of a button, it alters Tucson's throttle response, transmission shift points and steering feel for a sportier experience behind the wheel.

Control Freakishly

Available Active Cornering Control AWD gives the Tucson driver more confidence when road conditions are wet or slippery. It adjusts the torque that's sent to each wheel and uses inner rear-wheel braking to help prevent understeer for optimal traction and improved agility, both through and out of corners.

Unrage The Road

Tucson's unibody is forged with advanced high-strength steel and aerospace-quality adhesives to improve body stiffness for a quieter ride. Road noise is also suppressed using sound-dampening materials throughout the body. Even the door latch mechanisms were refined to create a more solid, secure sound.





Why more standard safety features? We've seen your morning commute.

The first thing they teach you in driver's ed class is to watch out for the other guy. In today's age of distracted drivers, that lesson has never been more important. Thankfully, Tucson comes equipped with a whole host of advanced safety features that alert you to what's going on around you on the road. Even better? The new Tucson makes many of these remarkable innovations standard.

On every 2019 Tucson – even the base model Tucson SE – Forward Collision-Avoidance Assist, Lane Keeping Assist and Driver Attention Warning come standard.¹ Unlike many competitors, Tucson doesn't require you to move up to costlier trim levels to enjoy the peace-of-mind these features provide. Want a full 360-degree sense of what's happening? You can add available safety features like a Surround View Monitor, Blind-Spot Collision Warning² and Rear Cross-Traffic Collision Warning.³

Of course, safety is more than a set of features listed on the window sticker. It's a philosophy underlying the engineering you can't see. Which explains why Tucson's unibody structure is laden with advanced high-strength steel. It helps absorb impact forces and channel their energy around the passenger safety cell, leading to consistently high crash-test ratings. Year after year.

Hyundai SmartSense Technologies⁶



Ultimate Safety

Tucson Ultimate offers our highest level of safety features. It adds Pedestrian Detection to Forward Collision-Avoidance Assist,⁴ along with High Beam Assist, rain-sensing wipers and Smart Cruise Control with Stop & Go.⁵ Feels better just reading all of that, doesn't it?

Don't Bump Your Bumpers

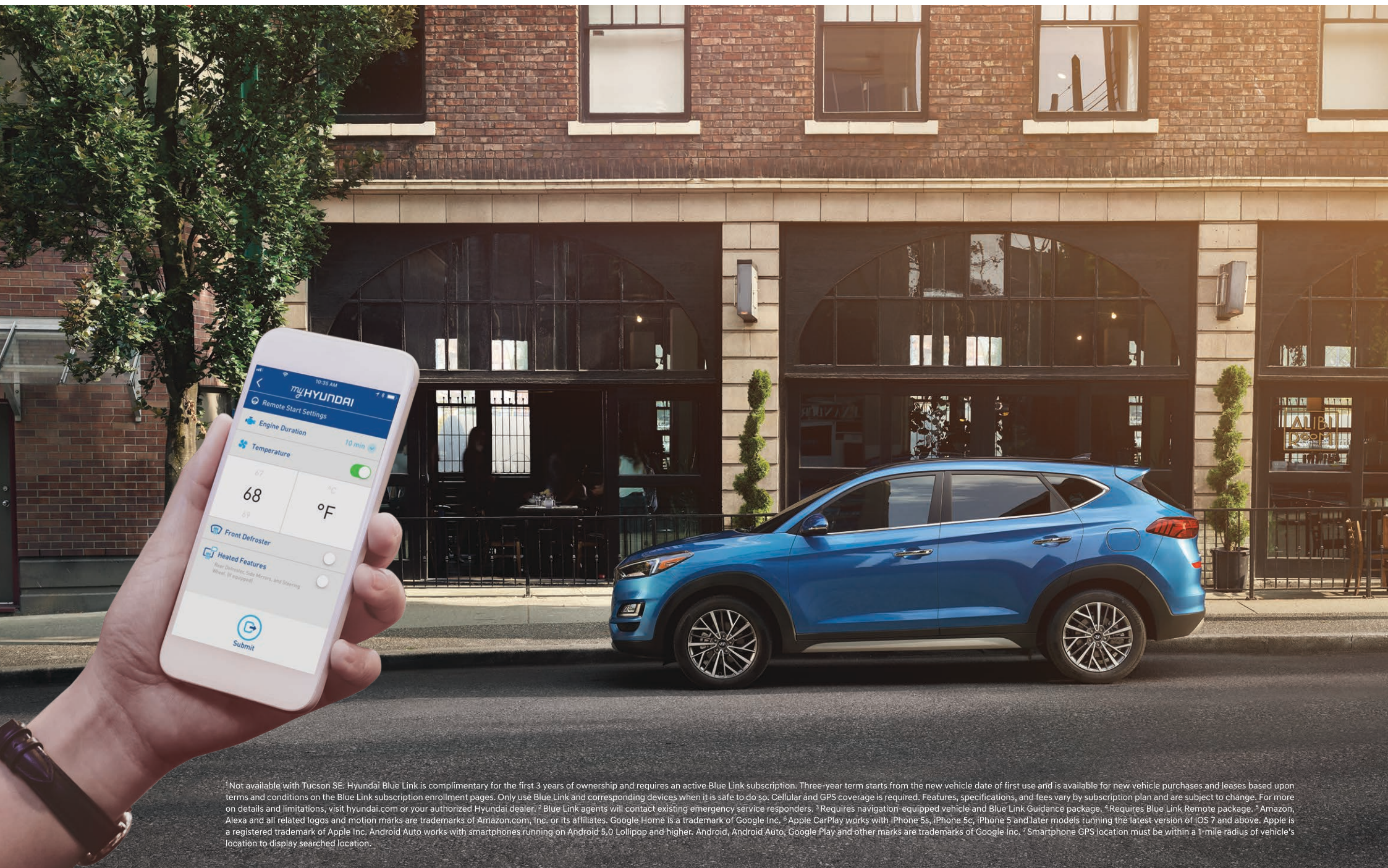
Does it seem like parking spaces are squeezing tighter, curbs are getting taller and light poles are popping up all over? Tucson's available Surround View Monitor might be your new best friend. It helps you check for obstacles before you make your move.

A Relaxing Cruise

Tucson Ultimate's Smart Cruise Control automatically adjusts speed to maintain a safe distance from the vehicle ahead, making your long distance journeys safer and more relaxing. It can even bring your Tucson to a complete stop, then accelerate back up to speed again automatically.⁵



¹ Forward Collision-Avoidance Assist (FCA) is designed to assist drivers to avoid, or reduce the severity of, collisions with cars that have slowed or stopped in front of them. It is a supplemental assist and does not replace the need for extreme care and attention by the driver. FCA may not stop the vehicle completely and will not avoid all collisions. The Lane Departure Warning system with Lane Keeping Assist operates above approximately 44 mph and only when the lane markings are clearly visible on the road. It will not work under all circumstances and will not prevent loss of control. It is a supplemental assist, and does not replace the need for extreme care and attention by the driver. It is the driver's responsibility to remain alert at all times. Driver Attention Warning is only a warning to inform the driver of a potential lack of driver attention or drowsiness. It does not detect and provide an alert in every situation. See Owner's Manual for details. ² Do not rely completely on Blind-Spot Collision Warning (BCW) and be sure to use proper lane changing procedures. BCW may not detect every object or vehicle and will not prevent accidents. ³ Rear Cross-Traffic Collision Warning (RCCW) is active when the vehicle is in reverse gear and backing at a speed less than 6 mph. It only engages during the first activation of reverse gear from park and may not detect all vehicles, depending on the size, angle, distance and speed of the other vehicle. Never rely exclusively on RCCW. Always look over your shoulder and use your mirrors to confirm rear clearance. See Owner's Manual for further details and limitations. ⁴ Forward Collision-Avoidance Assist (FCA) with Pedestrian Detection detects pedestrians, but not in all conditions. ⁵ Smart Cruise Control (SCC) is not a collision avoidance or warning device. SCC is for highway use only and should not be used in poor weather, heavy or varying traffic, or on winding or slippery roads. The driver remains responsible for slowing or stopping the vehicle to avoid a collision. SCC initiates a full stop when the traffic ahead stops and reengages if the vehicle ahead moves forward within 3 seconds. See Owner's Manual for details. ⁶ Features vary by model. For details, refer to the Features chart in the back of this brochure or visit hyundai.com. ⁷ Government 5-Star Safety ratings are part of the National Highway Traffic Safety Administration's (NHTSA) New Car Assessment Program (nhtsa.gov).



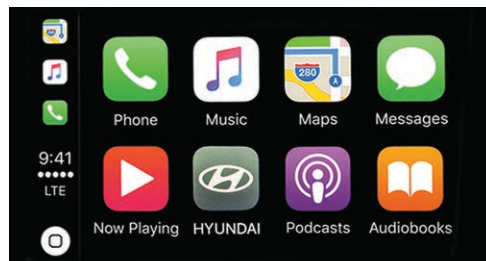
¹ Not available with Tucson SE. Hyundai Blue Link is complimentary for the first 3 years of ownership and requires an active Blue Link subscription. Three-year term starts from the new vehicle date of first use and is available for new vehicle purchases and leases based upon terms and conditions on the Blue Link subscription enrollment pages. Only use Blue Link and corresponding devices when it is safe to do so. Cellular and GPS coverage is required. Features, specifications, and fees vary by subscription plan and are subject to change. For more on details and limitations, visit hyundai.com or your authorized Hyundai dealer. ² Blue Link agents will contact existing emergency service responders. ³ Requires navigation-equipped vehicle and Blue Link Guidance package. ⁴ Requires Blue Link Remote package. ⁵ Amazon, Alexa and all related logos and motion marks are trademarks of Amazon.com, Inc. or its affiliates. Google Home is a trademark of Google Inc. ⁶ Apple CarPlay works with iPhone 5s, iPhone 5c, iPhone 5 and later models running the latest version of iOS 7 and above. Apple is a registered trademark of Apple Inc. Android Auto works with smartphones running on Android 5.0 Lollipop and higher. Android, Android Auto, Google Play and other marks are trademarks of Google Inc. ⁷ Smartphone GPS location must be within a 1-mile radius of vehicle's location to display searched location.

It's time you felt a truly special connection with your SUV.

Hyundai's award-winning Blue Link® technology keeps you connected to the services, information and entertainment you want and need on the road.¹ It starts with Blue Link Connected Care. Complimentary for your first three years, it offers exceptional peace of mind. Wherever you may roam, trained operators are standing by to provide emergency roadside assistance in the event of an accident where airbags have been deployed.²

Then there's Blue Link Guidance. It lets you search, download and navigate to addresses and points of interest using Tucson Ultimate's navigation system and voice commands from your driver seat (or your smartphone before entering your vehicle).³ The navigation system is enhanced by real-time traffic flow and incident updates via HD Radio™ (no subscription required).

If you're like most Hyundai owners, the Blue Link feature you'll love most is Remote Access.⁴ Using your MyHyundai app, you can turn your smartphone into a remote control that locks/unlocks your Tucson's doors and starts/stops the engine before you walk out the door. You can also use voice commands with your Amazon Echo® or Google Home™ device to set your Tucson's cabin temperature from the comfort of your couch or kitchen.⁵ Blue Link can even help law enforcement recover your vehicle if it's ever stolen. Visit hyundaibluelink.com for more information on the complete list of innovative features Blue Link puts at your fingertips.



The Smartphone, Now Smarter

Tucson's standard Apple CarPlay™ and Android Auto™ let you integrate your smartphone with its large high-resolution display. You can seamlessly access maps and navigation, contact lists, texts, calls, your music library and more using Tucson's touchscreen or simple voice commands.⁶



Cut The Cord

Seamless integration with your smartphone creates amazing capabilities. But only if your smartphone has power, right? With an available wireless charging pad onboard the new Tucson, keeping your phone juiced is easy. An available USB outlet for the 2nd row is sure to keep the folks in back happy, too.



Hyundai Blue Link®

What gives Tucson owners a better connection to the things they need? Hyundai's Blue Link Connected Car System, complimentary for the first 3 years of ownership. For details on all of the Blue Link features offered, visit hyundaibluelink.com.



Automatic Emergency Assistance

Blue Link Connected Care offers 24/7 SOS Emergency Assistance and Automatic Collision Notification that calls for help if you're in an accident where airbags deploy.



On-Demand Diagnostics

Run vehicle diagnostics from your Hyundai's touchscreen, report issues at the press of a button, and receive Monthly Vehicle Health Reports or maintenance reminders by email.



Destination Send-To-Car

Ask your phone to find new restaurants or points of interest that may not be updated on your vehicle's maps, then send the destination to Tucson's navigation system.



Remote Controls

Use your smartphone, home assistant or wearable device to remotely start your Tucson's engine, unlock the doors, set the cabin temperature and more.



Car Finder

Your MyHyundai app lets you navigate your way through crowded stadiums or shopping mall parking lots back to your Hyundai.⁷



Service Link

Conveniently schedule your vehicle for service from the driver seat of your Tucson or your MyHyundai smartphone app.

Models & Colors

TUCSON SE



17" Alloy Wheels



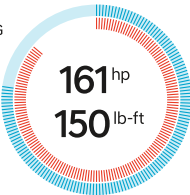
Popular Features

- 7" color touchscreen display audio
- Android Auto™ and Apple CarPlay™
- Forward Collision-Avoidance Assist
- Lane Keeping Assist
- Driver Attention Warning
- 6-way adjustable driver seat with height adjustment
- Rear View Monitor

2.0L GDI 4-Cylinder
City/Highway/Combined MPG

23/30/26
FWD EPA Estimates

22/25/23
AWD EPA Estimates



TUCSON Value



17" Alloy Wheels



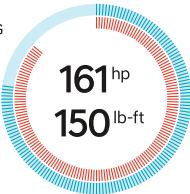
Popular Features

- Proximity Key entry with push button start
- 8-way power driver seat with power lumbar support
- Heated front seats
- Blind-Spot Collision Warning
- Rear Cross-Traffic Collision Warning
- Blue Link® Connected Car System
- Roof side rails

2.0L GDI 4-Cylinder
City/Highway/Combined MPG

23/30/26
FWD EPA Estimates

22/25/23
AWD EPA Estimates



TUCSON SEL



18" Alloy Wheels



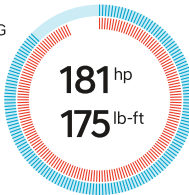
Popular Features

- 2.4L GDI 4-cylinder engine
- Chrome dual exhaust tips
- 8-way power driver seat with power lumbar support
- Rear seat USB charge port
- Dual automatic temperature control with CleanAir Ionizer
- Floor console-mounted rear vents
- Blue Link® Connected Car System

2.4L GDI 4-Cylinder
City/Highway/Combined MPG

22/28/25
FWD EPA Estimates

21/26/23
AWD EPA Estimates



TUCSON Sport



19" Alloy Wheels



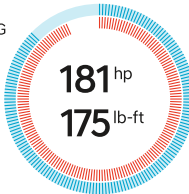
Popular Features

- LED headlights and taillights
- LED Daytime Running Lights
- Hands-free smart liftgate with auto open
- Front foglights
- Infinity® 315-Watt Premium Audio with 8 speakers
- Clari-Fi™ Music Restoration Technology
- Wireless charging pad

2.4L GDI 4-Cylinder
City/Highway/Combined MPG

22/28/25
FWD EPA Estimates

21/26/23
AWD EPA Estimates



TUCSON Limited



18" Alloy Wheels



Popular Features

- Leather seating surfaces
- 8-way power front passenger seat
- Heated steering wheel
- Surround View Monitor
- Leather-wrapped steering wheel and shift knob
- Chrome accent front grille and door handles
- Side mirrors with turn signal indicators

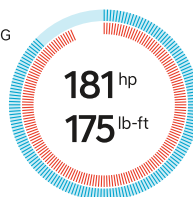
2.4L GDI 4-Cylinder
City/Highway/Combined MPG

22/28/25

FWD EPA Estimates

21/26/23

AWD EPA Estimates



Exterior Colors



TUCSON Ultimate



18" Alloy Wheels



Popular Features

- Forward Collision-Avoidance Assist with Pedestrian Detection
- Power tilt-and-slide panoramic sunroof
- 8" high-resolution touchscreen navigation system
- Smart Cruise Control with Stop & Go
- Heated/ventilated front seats and heated rear seats
- Rain-sensing windshield wipers
- High Beam Assist

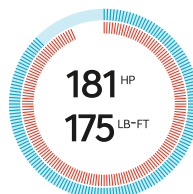
2.4L GDI 4-CYLINDER
City/Highway/COMBINED MPG

22/28/25

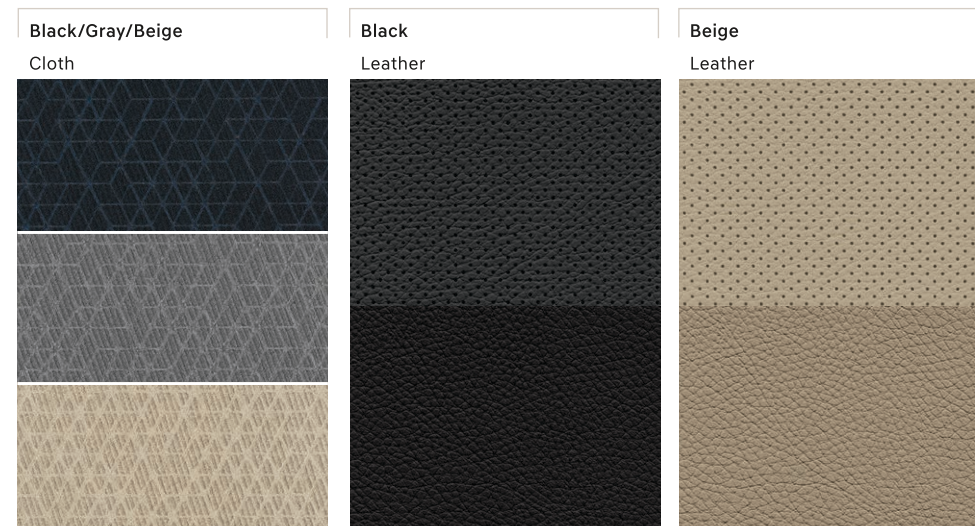
FWD EPA ESTIMATES

21/26/23

AWD EPA ESTIMATES



Interior Colors



TUCSON	SE	Value	SEL	Sport	Limited	Ultimate
Power & Handling						
161 hp/150 lb-ft, 2.0L GDI 4-cylinder engine	●	●	—	—	—	—
181 hp/175 lb-ft, 2.4L GDI 4-cylinder engine	—	—	●	●	●	●
6-speed automatic transmission with SHIFTRONIC®	●	●	●	●	●	●
Drive Mode Select	●	●	●	●	●	●
HTRAC All Wheel Drive and Downhill Brake Control	○	○	○	○	○	○
Exterior Features						
Chrome accent grille	—	—	—	—	●	●
Premium front and rear fascias	—	—	●	●	●	●
Automatic headlights	●	●	●	●	●	●
LED Daytime Running Lights	—	—	—	●	●	●
LED headlights and taillights	—	—	—	●	●	●
Side mirrors with LED turn signal indicators	—	—	—	—	●	●
LED accent lights	—	●	●	●	●	●
Heated side mirrors	—	●	●	●	●	●
Chrome exterior door handles	—	—	—	—	●	●
Roof side rails	—	●	●	●	●	●
Chrome dual exhaust tips	—	—	●	●	●	●
Bodycolor rear spoiler with LED center brake light	●	●	●	●	●	●
Acoustic-laminated noise-reducing windshield	●	●	●	●	●	●
Solar front glass and privacy rear glass	●	●	●	●	●	●
Rain-sensing windshield wipers	—	—	—	—	—	●
Hands-free smart liftgate with auto open	—	—	—	●	●	●
Power tilt-and-slide panoramic sunroof	—	—	—	—	—	●
Rear View Monitor with Parking Guidance	●	●	●	●	●	●
Front foglights	—	—	—	●	●	●
Interior Features						
Proximity Key entry with push button start	—	●	●	●	●	●
Electroluminescent Gauge Cluster with color LCD multi-information display	—	—	—	—	—	●
Tilt-and-telescopic steering wheel with audio, phone and cruise controls	●	●	●	●	●	●
Electronic Parking Brake with Automatic Vehicle Hold	●	●	●	●	●	●
Leather-wrapped steering wheel and shift knob	—	—	—	—	●	●
Power windows with driver's auto-down	●	—	—	—	—	—
Power windows with driver's auto-down/up	—	●	●	●	●	●
Dual automatic temperature control with CleanAir Ionizer and auto defogger	—	—	●	●	●	●
8-way power driver seat with 2-way power lumbar support	—	●	●	●	●	●
8-way power front passenger seat	—	—	—	—	●	●
Leather seating surfaces	—	—	—	—	●	●
Heated steering wheel	—	—	—	—	●	●
Heated front seats with 3 settings	—	●	●	●	●	●
Ventilated front seats and heated rear seats	—	—	—	—	—	●

TUCSON	SE	Value	SEL	Sport	Limited	Ultimate
Interior Features						
Auto-dimming rearview mirror with HomeLink®	—	—	—	●	●	●
Floor console-mounted rear vents	—	—	●	●	●	●
Reclining 60/40 split second row fold-flat seats and center armrest	●	●	●	●	●	●
Adjustable head restraints for all positions	●	●	●	●	●	●
Illuminated visor vanity mirrors	—	●	●	●	●	●
Windshield wiper de-icer	○	○	○	○	○	○
Advanced Safety						
Forward Collision-Avoidance Assist	●	●	●	●	●	—
Forward Collision-Avoidance Assist with Pedestrian Detection	—	—	—	—	—	●
Lane Keeping Assist	●	●	●	●	●	●
Driver Attention Warning	●	●	●	●	●	●
Blind-Spot Collision Warning	—	●	●	●	●	●
Rear Cross-Traffic Collision Warning	—	●	●	●	●	●
High Beam Assist	—	—	—	—	—	●
Surround View Monitor	—	—	—	—	●	●
Smart Cruise Control with Stop & Go	—	—	—	—	—	●
Audio & Connected Car Technology						
Android Auto™ and Apple CarPlay™	●	●	●	●	●	●
7" display AM/FM/MP3 audio and USB/AUX input jack	●	●	●	●	●	—
8" high-resolution touchscreen navigation system	—	—	—	—	—	●
Infinity® 315-Watt Premium Audio system with 8 speakers and Clari-Fi™ Music Restoration Technology	—	—	—	●	●	●
SiriusXM® Satellite Radio and HD Radio™ Technology	—	●	●	●	●	●
Bluetooth® hands-free phone system	●	●	●	●	●	●
Wireless charging pad	—	—	—	●	●	●
Blue Link® Connected Car System	—	●	●	●	●	●
Rear seat USB charge outlet	—	—	●	●	●	●
Three 12-volt outlets (2 front/1 cargo area)	●	●	●	●	●	●

● Standard ○ Optional — Not Available

Exterior / Interior Dimensions

	TUCSON
Wheelbase	105.1 in
Overall Length	176.4 in
Overall Width	72.8 in
Overall Height (with roof side rails)	64.8 (65.0) in
Head Room without sunroof - front/rear	39.6 / 39.2 in
Head Room with panoramic sunroof - front/rear	37.9 / 38.1 in
Leg Room - front / rear	41.5 / 38.2 in
Shoulder Room - front / rear	57.1 / 55.5 in
Hip Room - front / rear	55.6 / 54.5 in



TUCSON Ultimate in Gemstone Red



When there's hope, anything is possible.

Every time we sell a Hyundai, a portion goes to Hyundai Hope On Wheels® to help find a cure for childhood cancer. Over the last 20 years, Hyundai Hope On Wheels has donated more than \$145 million. Hope is our greatest feature. And it comes standard on every Hyundai. For more information, please visit HyundaiHopeOnWheels.org.



America's Best Warranty

Powertrain Limited Warranty

10 years
100,000 miles

New Vehicle Limited Warranty

5 years
60,000 miles

Anti-Perforation Warranty

7 years
UNLIMITED miles

24/7 Roadside Assistance

5 years
UNLIMITED miles



Assurance

HYUNDAIASSURANCE.COM

Our commitment to Hyundai owners doesn't end with the transfer of keys. Wherever the road takes you, we've got your back with Hyundai Assurance, an umbrella of services and benefits that includes America's Best Warranty, 24/7 Roadside Assistance, innovative safety and car care features...and more.

See dealer for LIMITED WARRANTY details. Fuel economy estimated by EPA for comparison only. Mileage may vary. While the information contained in this brochure was correct at the time of printing, specifications and equipment can change. Feature comparisons based on competitor information available at the time of printing. No warranty or guarantee is being extended in this brochure, and Hyundai reserves the right to change product specifications and equipment at any time without incurring obligations. Some vehicles are shown with optional equipment. Specifications apply to U.S. vehicles only. Please contact your Hyundai dealer for current vehicle specifications. As part of Hyundai's commitment to a responsible environment, this brochure was printed using paper certified by the Forest Stewardship Council®. FSC® certification helps ensure that the highest social and environmental standards are met in the making of the paper we use, contributing to conservation, responsible management and community-level benefits for people near the forests.



©2018 HYUNDAI NP020 T2019