

Driving innovation

IONIQ hybrid



Experience the
future of mobility in
your daily life.

[Welcome to the future.](#)

Leadership in the new era of zero emissions mobility is being realized through our development of innovative green technologies that are continually raising the industry standard for fuel efficiency.

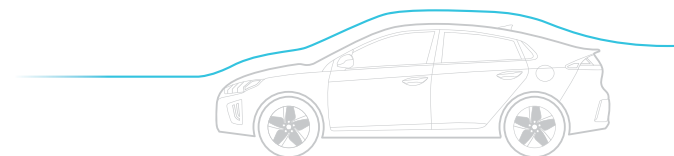




What a pleasant surprise.

A pioneering design that marries form with function, IONIQ hybrid's striking, coupé-style silhouette certainly creates a strong first impression. But looking beyond the sleek aerodynamics you will discover subtle design details that enhance every aspect of driving dynamics and efficiency.

Aerodynamic Cd **0.24**



Radiator grille

The new mesh-type grille adds a strong 3D effect for emphasis and maximum visual impact while serving its intended function.



LED rear combination lamps

Not only gorgeous, the new chevron pattern with its wraparound setup is simple and certain to get immediate attention.



Rear bumper

Fresh, new colors for the bottom insert and lower lip amplify the two-tone effect to make the bumper look sportier than ever.



The GLS model with optional equipment is shown here.

Elegance and peace of mind.

With its disciplined focus on layout simplicity and good ergonomics, the interior advances the evolution of trendsetting design. As forward-thinking as the exterior, the interior abounds with fine touches that bring all the key elements to life in fluid, elegant style. Every detail is precisely designed around the philosophy of clean simplicity for a calming, soothing effect on the senses.

Supervision cluster with 7" color LCD

All vital car system information is presented with astounding legibility and colorful graphic format that only Supervision technology can deliver.



8-inch display audio

IONIQ's nerve center does more than keep you on course. It offers total smartphone connectivity through a simple-to-use touchscreen interface.

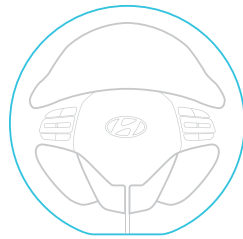


Touchscreen air conditioning controller

Just as you would expect of Hyundai's high-tech flagship, the touchscreen AC controller is a cut above the rest and looks very cool indeed.



D-cut steering wheel



The GLS model with optional equipment is shown here.



Driving freedom with no compromises.

Driving freedom enters a new dimension with IONIQ's driver safety assist systems that act like a co-pilot to help you drive safe. IONIQ's advanced systems like Blind Spot Collision Warning and Rear Parking Assist take much of the worry and stress out of driving. Just sit back, relax and enjoy the drive.

Blind Spot Collision Warning (BCW)

Radar sensors built into the rear bumper will warn of the presence of a vehicle within the blind spot area by issuing an acoustic alarm and flashing an LED icon built into the side view mirrors.

7-airbag system

Should the unexpected ever happen, seven airbags provide the ultimate protection. Up front, a pair of front airbags and another pair of side airbags for thorax protection with the driver getting added protection from a knee airbag. Full-length curtain airbags defend against side collisions.



The GLS model with optional equipment is shown here.

Two hearts, one beat.

The epitome of forward-thinking motoring, the 1.6-litre GDi direct-injection petrol engine is intelligently engineered to work in unison with the electric motor to deliver maximum power and optimal fuel economy. Full torque is instantly available resulting in silk-smooth acceleration and a truly agile driving experience that surpasses all other cars in its class.



Kappa 1.6L Atkinson-cycle GDi engine

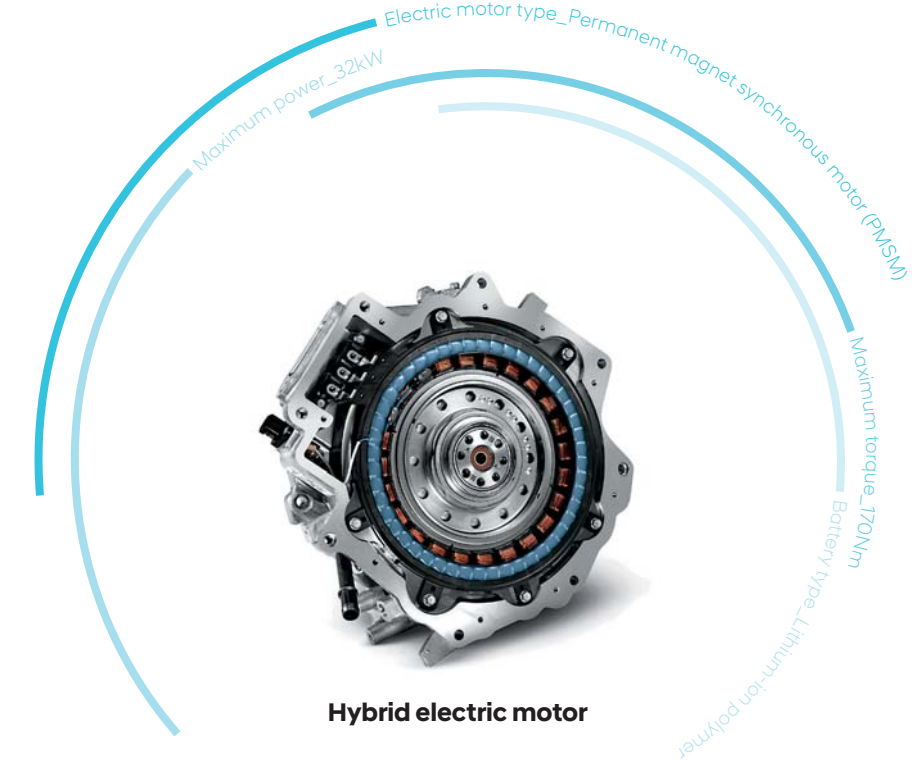
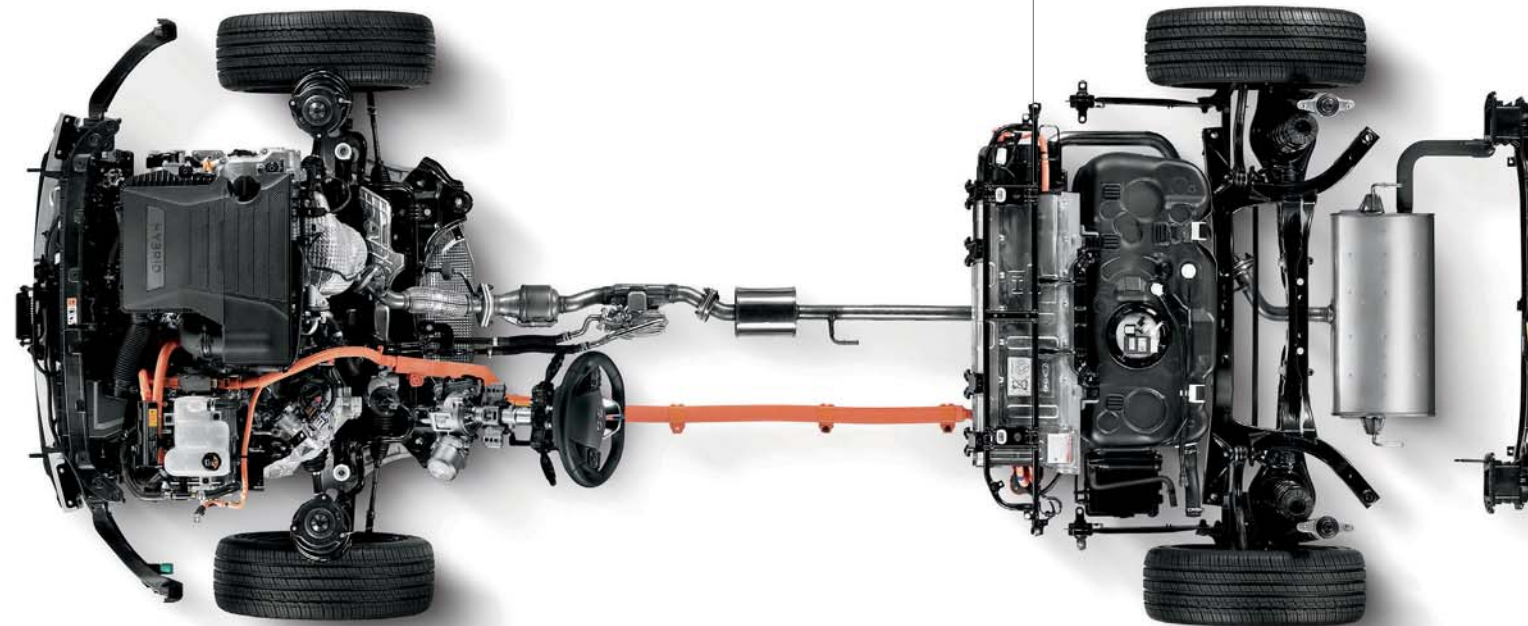


Advanced high-strength steels

The usage of advanced high-strength steel alloys has been expanded to 53 percent of the body structure. To attain unprecedented levels of structural rigidity, critical components were fabricated using advanced hot stamping technology.

Low center of gravity

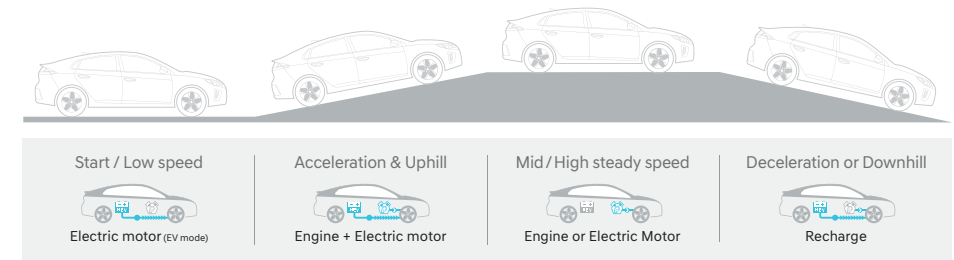
By mounting the battery under the seats, IONIQ is able to attain an exceptionally low center of gravity. This greatly enhances agility and helps make IONIQ so much fun to drive.



Hybrid electric motor

Predictive energy management

The battery management system optimizes energy storage by recovering braking energy to help recharge the batteries and by continuously collecting and analyzing data on your travel routes and driving habits. Advanced algorithms are employed to switch seamlessly between pure electric drive, pure gasoline propulsion or combined mode as battery reserve power and driving conditions permit.





Packages

The GLS model with optional equipment is shown here.



LED DRL



LED headlamps
Parking distance warning (front)



Front safety power window
Chrome door scuffs



Power sunroof
Rear spoiler



Synthetic leather-appointed cluster



Mood lamp
Paddle shifters



Front ventilated / heated seats
Seat folding system (6:4 type)



USB charging port (center console)
Integrated memory system (IMS)

Exterior colors



Polar White (WAW)



Fluidic Metal (M6T)



Iron Gray (YT3)



Phantom Black (NKA)



Liquid Sand (S5P)



Intense Blue (YP5)



Fiery Red (PR2)

Interior colors



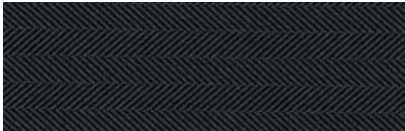
Leather



Leather



Leather



Woven

Wheels



15" alloy wheels



17" alloy wheels

Specifications

ENGINE

Type	GDi gasoline engine
Displacement (cc)	1,580
Max. power (PS / rpm)	105 / 5,700
Max. torque (kg·m / rpm)	15.0 / 4,000

ELECTRIC MOTOR

Type	Permanent magnet synchronous motor (PMSM)
Max. power (kW)	32
Max. torque (Nm)	170
Battery type	Lithium-ion polymer

DIMENSIONS

Head room (mm)	Front / rear (w/o sunroof)	994 / 950
Leg room (mm)	Front / rear	1,073 / 906
Shoulder room (mm)	Front / rear	1,425 / 1,396
Luggage capacity (liter)	Up to roof	563
	Rear seats down, up to roof	1,518

- The above values are based on internal testing results and are subject to change after final validation.
- Some of the equipment illustrated or described in this catalog may not be supplied as standard equipment and may be available at extra cost.
- Hyundai Motor Company reserves the right to change specifications and equipment without prior notice.
- The color plates shown may vary slightly from the actual colors due to the limitations of the printing process.
- Please consult your dealer for full information and availability on colors and trims.



Wheel tread* 1,549
Overall width 1,820



Wheel base 2,700
Overall length 4,470

Overall height
1,450



Wheel tread* 1,563

*Wheel tread : 15" (front / rear) - 1,563 / 1,577

Unit : mm

