

Santa Fe.





A seven seat SUV made
for families.



Santa Fe.

Taking Australian families further.

We have one goal – to be Australia's most loved car company. To get there, we're driven by a simple philosophy that life's most incredible moments shouldn't be reserved for a select few, and everyone should be able to experience an exciting and enjoyable drive.

How do we make that happen? We start by pushing our own boundaries, by making premium the new standard, and by engineering the most enjoyable ride possible.

Australia gives us the opportunity to live active lives. The Santa Fe is designed to help us achieve that. It's strong, stylish and sporty. With enough space to fit the family, the dog, and plenty of gear, you'll be able to explore everything Australia has to offer in comfort and style. From the city, to the sea, the outback, and everywhere in between – the Santa Fe is for families on the go.

You can be sure we've put it through its paces too. Our extensive local tuning program has seen the Santa Fe challenge, and overcome, the harshest conditions Australia can throw at it. The Santa Fe really is the perfect complement to an active Australian lifestyle.





Santa Fe.

Safety matters.

Safety should never be an afterthought, or an added extra. Which is why we won't settle for anything less than 7 airbags and a 5-star ANCAP safety rating.

The Santa Fe is designed for families on the go, and as such it comes with some of the most advanced safety technology available. This includes active safety features like Anti-Lock Braking System, Hill-Start Assist Control and Traction Control System to monitor grip and assist in keeping you on track, no matter what surface you're on. The rear view camera acts as another pair of eyes, making safe reversing easy.

The Santa Fe also features a suite of intelligent safety technologies called Hyundai SmartSense™†, which is available across all variants.

Hyundai SmartSense™† features all have one thing in common – they've been developed to help you be alert to (and avoid) any dangers around you.

From braking or reducing speed to maintain a safe distance from vehicles ahead, to helping you stay aware of what's happening in your blind spots, Hyundai SmartSense™† provides peace of mind for you, and for us.



Rear view camera*



7 airbags

†Hyundai SmartSense™ is a registered trademark of Hyundai Motor Company. Safety features are not a substitute for attentive driving.

*Highlander variant shown.



Blind Spot Detection (BSD)

When driving at a speed of 30km/h or higher, the BSD function will alert the driver to vehicles that enter the blind spot, including during lane changes.



Smart Cruise Control (SCC)

Automatically maintains distance from the car ahead, up to a preset speed. Car comes to a complete stop and restarts in 3 seconds once the car in front departs.



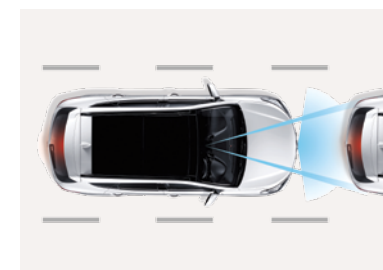
Lane Departure Warning System (LDWS)

A camera mounted on top of the windshield of Highlander variants, provides a cutting edge preventive safety mechanism by recognising lane departures that are not accompanied by a turn signal, and then initiating an alert to the driver.



Advanced Smart Parking Assist System (ASPAS)

The ASPAS which is only available on the Highlander variant, safely steers the car in and out of parking spots, in 'Reverse Parking(90°)', 'Parallel Parking' and Parallel Parking 'Exit' modes. All you need to do is operate the accelerator, brake and gear levers as necessary.



Autonomous Emergency Braking (AEB)

Combining radar and camera data, the AEB system autonomously activates the brakes when it detects dangerous and sudden braking by the car ahead or pedestrians on the road.

Santa Fe.



2.4 GDi AWD

138 Maximum Power
kW/6,000 rpm
241 Maximum Torque
Nm/4,000 rpm

3.3 MPI 2WD

199 Maximum Power
kW/6,400 rpm
318 Maximum Torque
Nm/5,300 rpm

2.2 CRDi AWD

147 Maximum Power
kW/3,800 rpm
440 Maximum Torque
Nm/1,750 – 2,750 rpm

Driving design.

The Santa Fe looks at home, no matter where it goes. Whether you're dropping the kids off at sports, or exploring country roads, its sweeping body and aerodynamic silhouette mean the Santa Fe is more than just a great drive – it's a great all-rounder.

The Santa Fe's performance is a testament to the work our designers and engineers put in every day, in order to deliver a more enjoyable and practical ride.

You can choose from two great petrol engines - the 2.4 GDi*, or the 3.3 MPi V6 2WD^ which delivers 199kW of power and 318Nm of torque, cementing its position as the most powerful engine in the Santa Fe range.

The 2.2 CRDi** diesel engine delivers exceptional torque, making it perfect for carrying any load.

We've even taken Hyundai's commitment to research and development one step further. Thanks to our extensive local tuning program, we've rigorously tested and optimised the Santa Fe for Australian roads.

By recruiting the finest engineers and designers, and investing billions of dollars each year, we've made a firm commitment to the future of motoring in Australia and overseas.



Top: Chrome front grille surround
Bottom: Spoiler



Top: High Intensity Discharge (HID) headlights†
Bottom: Alloy wheels#



*Only available on the Active variant. ^Only available on the Active X variant. **Not available on the Active X variant.
†HID headlights: Only available on the Highlander variant. #Alloy wheels: Highlander variant shown.

Santa Fe.

Take a load off.

The Santa Fe acts like another member of the family.

No matter how busy you get, it's always working hard to help make life easier.

Whether you're on the school run, doing your weekly shopping, or getting off the beaten track to explore the outdoors - the Santa Fe gives you the freedom to make the most out of life.





Santa Fe.



An SUV for the family.

Growing families need lots of space, something the Santa Fe has plenty of.

With 7 seats, a large boot, and a suite of lifestyle additions like coffee cup holders and rear door window sunshades,* the Santa Fe is made with families in mind - no matter how big, or small yours is.



*Rear door window sunshades: Only available on the Elite and Highlander variants.

Santa Fe.

Elegantly appointed.

The Santa Fe exudes elegance, inside and out. It's full of features that will maximise your driving experience, no matter where the road takes you. Once you drive the Santa Fe, you'll understand how serious we are about making premium quality, standard.

The Santa Fe has been designed with 7 seats and more space than ever before. Need more room for larger loads like furniture, or sports equipment? No problem - simply slide the flexible second row seating back. We've added lots of subtle luxuries too, like our glovebox cooler and heated front seats.^

You'll notice a difference the minute you get behind the wheel. Take the panoramic glass sunroof* with electric sunblind for example. It gives you that extra look of luxury, and connects you, and your passengers with the beautiful scenery that awaits you as you explore Australia.



Top: Heated and air ventilated front seats^
Bottom: Spacious interior*

Top: Panoramic glass sunroof*
Bottom: Glovebox compartment with cooling

^Heated and air ventilated front seats: Heated front seats not available on the Active variant. Air ventilated front seats only available on the Highlander variant. *Panoramic glass sunroof: Comes standard on the Highlander variant and is available as an optional extra on the Elite variant.
*Spacious interior: Highlander variant shown.



Santa Fe.



MAP

Great Ocean Rd
Separation Creek

3D



Select as Destination

MAP

RADIO

MEDIA

CLIMATE

MODE

SYNC

CleanAir

A/C
REAR

Cleverly connected.

The Santa Fe is clever. It understands your desire to stay connected, not just to the road, but to the world around you. We've seamlessly integrated Apple CarPlay™^ and Android™ Auto* into the vehicle, meaning you can safely play music, make calls or get directions on the easy to use touchscreen display. Rain sensing wipers turn on automatically, allowing you to keep both hands on the wheel when it gets wet.

The Santa Fe also recognises you (and your Smart Key¹) before you get in. Once you're behind the wheel you still don't need to take your keys out, thanks to the push button start¹. Stand behind the Santa Fe and the Smart Tailgate^ recognises your smart key and opens automatically, meaning hands free access. This is perfect when you're holding bags or sports gear – even the dog.



Top: Push button start¹
Bottom: Automatic dusk sensing headlamps

Top: Smart Tailgate^
Bottom: Touchscreen display**

^Apple CarPlay® functionality requires software update, Apple CarPlay® requires iPhone 5® or subsequent model (lightning cable) in order to operate. Apple® and iPhone® are registered trademarks of Apple Inc. *Android™ Auto requires a device with Android 5.0 operating system or subsequent version, and USB cable in order to operate. Android is a trademark of Google Inc. ¹Smart Key with push button start: Only available on the Elite and Highlander variants. ^Smart Tailgate: Only available on the Elite and Highlander variants. **Touchscreen display: Highlander variant shown.

Santa Fe.

Variants.

Life is about choice – so we've created four different Santa Fe variants that will let you take to the road the way you want.



Active.



Engine and transmission

2.4L GDi (Petrol) AWD (Auto)
2.2L CRDi (Diesel) AWD (Auto)

Key specifications:

Safety

- 7 airbags
- Rear parking assist system
- Rear view camera
- Hyundai Smartsense™^ including:
 - Autonomous Emergency Braking (AEB)
 - Blind Spot Detection (BSD)
 - Forward Collision Warning (FCW)
 - Lane Change Assist (LCA)
 - Lane Departure Warning System (LDWS)
 - Rear Cross Traffic Alert (RCTA)
 - Smart Cruise Control (SCC)
 - Electronic Parking Brake

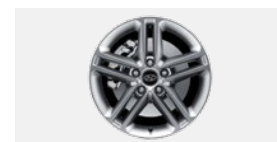
Interior and technology

- 7" touchscreen audio system with 6 speakers, Apple CarPlay™* and Android™ Auto* compatibility

- Bluetooth®^ connectivity
- Steering wheel controls for audio and cruise control
- AUX/USB audio input with iPod®^ compatibility

Exterior and technology

- Roof rails
- Electro-Chromatic Mirror (ECM) - auto dimming with compass
- Electrically adjusted lumbar support for driver's seat (2-way)
- Fog lamps (front & rear)
- LED Daytime Running Lights (DRL)
- 17" alloy wheels
- LED side repeaters integrated into side mirrors
- Rain sensing wipers
- Heated and power adjustable side mirrors



17" alloy wheels



Electronic Parking Brake (EPB)



7" Touchscreen audio system with mp3, Apple CarPlay™* and Android™ Auto* compatibility



Blind Spot Detection (BSD)

***Apple CarPlay™ and Android™ Auto:** Apple CarPlay® functionality requires software update. Apple CarPlay® requires iPhone 5® or subsequent model (lightning cable) in order to operate. Apple® and iPhone® are registered trademarks of Apple Inc. Android™ Auto requires a device with Android 5.0 operating system or subsequent version, and USB cable in order to operate. Android is a trademark of Google. **^Leather appointed seats** means parts of the seats have a combination of genuine and artificial leather, but are not wholly leather. Not available on the Active variant. ***Panoramic glass sunroof:** Comes standard on the Highlander variant and is available as an optional extra on the Elite variant. **^Hyundai SmartSense™** Hyundai SmartSense™ is a registered trademark of Hyundai Motor Company. Safety features are not a substitute for attentive driving. **•Bluetooth®** is a registered trademark of Bluetooth SIG, Inc. Please check your Bluetooth® device's capabilities to ensure compatibility. ***SUNA™ Live Traffic Updates:** SUNA™ Traffic coverage is available in the following metropolitan areas: Adelaide, Brisbane, Canberra, Gold Coast, Melbourne, Perth and Sydney and the following regional areas: Geelong, Bendigo, Ballarat, Hobart, Darwin, Newcastle, Central Coast, Wollongong, Sunshine Coast and Ipswich. **^iPod™:** iPod® is a registered trademark of Apple computer Inc., registered in the U.S. and other countries. ***Sat Nav Update Plan:** Only applies to new vehicles with factory-fitted satellite navigation. Updates are delivered annually and are complimentary if the vehicles complete a scheduled service at a participating Hyundai dealer. Updates must be undertaken within 5 years of the vehicle's initial purchase. Maximum number of 4 updates. **^^Tyre Pressure Monitoring System (TPMS)** is only available on the Active X variant.

Active X.



Engine and transmission

3.3L MPi (Petrol) V6 2WD (Auto)

Key specifications above Active:

Safety

- Tyre Pressure Monitoring System (TPMS)^{^^}

Interior and technology

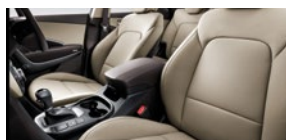
- Dual zone climate control
- Heated front seats
- Leather appointed[†] seats
- Glovebox cooling

Exterior and technology

- 19" alloy wheels (dark grey finish)
- Chrome exterior door handles
- Rear privacy glass
- Matte carbon fibre effect finish on dash trim inserts
- Stamped "Santa Fe" stainless steel scuff plates



19" alloy wheels



Leather appointed seats[†]



Heated front seats



Glovebox cooling

Elite.



Engine and transmission

2.2L CRDi (Diesel) AWD (Auto)

Key specifications above Active X:

Safety

- Front parking assist system

Interior and technology

- Smart Key with push button start
- 8" touchscreen Satellite Navigation with SUNA^{TM#} Live Traffic Updates and Sat Nav Update Plan[†]
- Infinity[®] premium audio system - 10 speakers with external 550W amplifier
- Electrically adjustable driver and front passenger seats (12 way driver, 4 way passenger)

- Steering wheel mounted phone controls
- Rear door window sunshades

Exterior and technology

- 18" alloy wheels
- Smart Tailgate (rear power tailgate with handsfree operation)
- Auto dipping side mirrors on reverse



18" alloy wheels



Push button start



8" touchscreen Satellite Navigation with SUNA^{TM#} Live Traffic Updates and Sat Nav Update Plan.[†]



Smart Tailgate

Highlander.



Engine and transmission

2.2L CRDi (Diesel) AWD (Auto)

Key specifications above Elite:

Safety

- Advanced Smart Parking Assist System (ASPAS)

Interior and technology

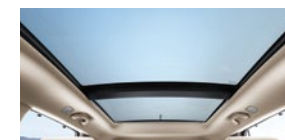
- Air ventilated front seats
- Heated rear outboard seats

Exterior and technology

- 19" alloy wheels
- Panoramic glass sunroof[■]
- High Intensity Discharge (HID) headlamps with washer system
- LED rear combination lights



19" alloy wheels



Panoramic glass sunroof[■]



High Intensity Discharge (HID) headlamps



Advanced Smart Parking Assist System (ASPAS)

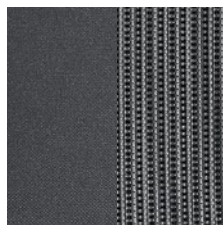
Santa Fe.

Style, your way.

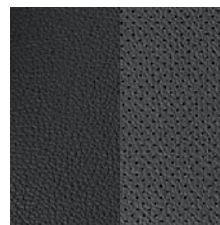
Your new Hyundai should stand out. And because the Santa Fe is hard working, stylish, and intelligent, we've developed an interior and exterior colour range that emphasises these qualities.

After all, everyone's different. From the colour of the paint, to the shade of the trim – take the opportunity to complement your personality and make sure the Santa Fe fits right into your every day life.

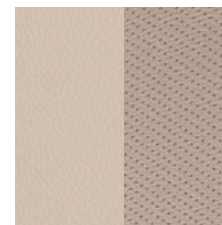
Santa Fe Interiors



Black Cloth



Black Leather†



Beige Leather†



Brown Leather†

Santa Fe colour combination chart*

Model	Pure White (Solid)	White Crystal (Mica)	Platinum Silver (Metallic)	Titanium Silver (Metallic)	Phantom Black (Mica)	Ocean View (Metallic)	Red Merlot (Mica)	Tan Brown (Mica)
Active								
Black cloth	•	•	•	•	•	•	•	-
Active X								
Black leather appointed† seats	•	•	•	•	•	•	•	-
Beige leather appointed† seats	•	-	-	-	•	-	-	•
Elite								
Black leather appointed† seats	•	•	•	•	•	•	•	-
Beige leather appointed† seats	•	-	-	-	•	-	-	•
Highlander								
Black leather appointed† seats	•	•	•	•	•	•	•	-
Beige leather appointed† seats	•	-	-	-	•	-	-	•
Brown leather appointed† seats	•	-	-	•	-	-	-	-

*Colours shown are indicative only and may vary due to the printing process. Metallic and mica paint are optional extras.

†Leather appointed seats: Parts of the seats have a combination of genuine and artificial leather, but are not wholly leather.

Let the light in



Panoramic glass sunroof^



^Panoramic glass sunroof: Comes standard on the Highlander variant and is available as an optional extra on the Elite variant.

Santa Fe.





Take off to the great outdoors.

The Santa Fe is made for adventure.

That's why we've created a range of adventure accessories to complement your love for the outdoors. With roof racks and a tow bar for extra storage, an alloy nudge bar for protection and plenty of space for family - you'll be able to escape just about anywhere, anytime you like.

Santa Fe.

Hyundai Genuine Accessories.

Your Santa Fe isn't just an SUV. It's an extension of you. So make it as unique as you are, with Hyundai Genuine Accessories.[†]

Roof and bike racks give you extra storage, while a tough cargo liner can help protect the boot from spills or wet gear (and dogs).

No matter what your lifestyle demands, there's a suite of practical, and stylish Hyundai Genuine Accessories[†] to match.



Top: Cargo liner
Bottom: Alloy nudge bar

Top: Tailored carpet floor mats (set of 4)
Bottom: Whipbar™ Quiet Roof Racks⁶

Top: Tinted stylevisors (set of 4)
Bottom: Towbar, towball + trailer wiring harness⁵





*All Hyundai Genuine Accessories are subject to warranty conditions. See your nearest Hyundai dealer or visit our website at www.hyundai.com.au for full warranty terms and usage recommendations. 1. Auxiliary cable not suitable for Apple® devices. 2. iPad® is a registered trademark of Apple Inc. The iPad® holder has been designed to hold iPad® models 1, 2, 3, 4 or Air Securely. To ensure occupants are protected in the event of a collision, the screen protector must be fitted to the iPad® when in use. iPad® not included. 3. Only suitable for use with a retractable seatbelt. 4. Maximum Load Rating 180kg 5. Maximum load rating 100kg. 6. Maximum ball download 100kg, (150kg with genuine Hyundai load assist kit). Towing capacity diesel Auto & Petrol = 2000kg. Towing capacity diesel Manual = 2500kg Braked; 750kg unbraked all models. Towbar capacity subject to regulatory requirements, towbar design, vehicle design and towing equipment limitations. 7. Load Capacity = 75kg evenly distributed across 2 bars. 8. Park assist is designed as driver assist function only and should not be used as a substitute for skilled driving and safe parking practices. While the park assist sensors monitor objects on approach, there may be occasions where blind spots affect the sensitivity of the sensors and as a result the area into which the vehicle is heading must be visually monitored by the driver at all times while parking.

Genuine Accessories	Active	Active X	Elite	Highlander
Technology				
Auxiliary Cable ¹	•	•	•	•
iPad® Holder ²	•	•	•	•
Interior				
Cargo Barrier (not compatible with panorama glass roof)	•	•	•	-
Tailored Carpet Floor Mats Black (set of 4)	•	•	•	•
Tailored Carpet Floor Mats Black (3rd Row)	•	•	•	•
Tailored Carpet Floor Mats - Brown (set of 4)	-	•	•	•
Tailored Rubber Floor Mats (set of 4)	•	•	•	•
All Weather Floor Mats (set of 4)	•	•	•	•
Cargo Liner	•	•	•	•
Fabric Rear Bumper Protector	•	•	•	•
Portable Cooler ³ (12 volt, 15 litre)	•	•	•	•
Water Resistant Seat Covers (Sold singularly)	•	•	•	•
Cargo Organiser	•	•	•	•
Scuff Plates (set of 4)	•	-	-	-
Exterior				
Alloy Nudge Bar	•	•	•	•
Alloy Nudge Bar (Charcoal Finish)	•	•	•	•
Headlight Protectors (set of 2) (not compatible with Xenon headlights)	•	•	•	-
Bonnet Protector (clear)	•	•	•	•
Bonnet Protector (smoked)	•	•	•	•
Tinted Stylevisors (set of 4)	•	•	•	•
Integrated Side Steps ⁴	•	•	•	•
Slimline Side Steps ⁵	•	•	•	•
Side Door Mouldings (set of 2)	•	•	•	•
Towbar, Towball & Trailer Wiring Harness ⁶	•	•	•	•
Styling				
Interior Lighting	•	•	•	•
Roof Racks and Lifestyle				
Whispbar™ Quiet Roof Racks ⁷	•	•	•	•
Roof Mounted Bike Carrier	•	•	•	•
Thule Bike Rack (Wheel on)	•	•	•	•
Roof Mounted Kayak Holder	•	•	•	•
Ski & Snowboard Carrier	•	•	•	•
Surfboard Carrier	•	•	•	•
Roof Pod 395L	•	•	•	•
Styling				
First Aid Kit (4 Pocket)	•	•	•	•
Front Park Assist ⁸	•	•	-	-



^5 year/unlimited Km warranty: Applies to new passenger vehicles used for private/domestic purposes. Excludes vehicles used at any time for "commercial application" as defined in the vehicle warranty policy, for which a 5 year/130,000km (whichever occurs first) warranty applies. Refer to full warranty terms & conditions for details and exclusions. **^^Lifetime Service Plan:** For the benefit of Hyundai owners, Hyundai provides online quotes, which specify the maximum price applicable for a vehicle's next scheduled maintenance service at a participating authorised Hyundai dealer and using genuine Hyundai parts (where required). Online quotes are available at www.hyundai.com.au, apply for a stated effective period only and may change after that effective period without notice. Standard scheduled maintenance services are of limited scope. The benefit of online quotes is available for all Hyundai's, for their lifetime. ***Sat Nav Update Plan:** Only applies to new vehicles with factory-fitted satellite navigation. Updates are delivered annually and are complimentary if the vehicle completes a scheduled service at a participating Hyundai dealer. Updates must be undertaken within 5 years of the vehicle's initial purchase, maximum number of 4 updates. ***Roadside Support Plan:** Complimentary 12 months Roadside Support when you purchase a new Hyundai passenger vehicle (excluding rental buyers). Further Roadside Support extensions are available, each for 12 months from the date of a scheduled maintenance service at a participating authorised Hyundai dealer (unless vehicle is more than 108 months (9 years) from the original new car sale date, in which case entitlement to Roadside Support ends when vehicle reaches 120 months (10 years) from original new car sale date).

Relax, we'll take it from here.

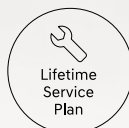
There's a reason why our iCare program is so highly regarded. We built iCare around one simple, innovative idea. That comprehensive on-the-road care should come standard with every car – not just as an “optional extra”.

Our five-year, unlimited kilometre warranty[^] means you've got the freedom to go ahead and drive without having to keep an eye on the odometer.

When you look at our Lifetime Service Plan^{^^}, the benefits speak for themselves. Regular servicing (at a set price) by factory-trained Hyundai Technicians will help keep your Hyundai in peak condition, giving you peace of mind today, and into the future.

Since every new Hyundai is built to the highest standards, we've got the confidence to offer comprehensive customer service without exception. Or as we like to say, amazing as standard. That includes a Sat Nav update plan for up to 5 years*, and 24/7 Roadside Support[▲] for up to ten years when you service with us.

iCare



Santa Fe.



Big help, for little Aussies.

Every time a new car is sold at one of our Dealerships, both Hyundai and the Dealer will donate part of the sale price to Hyundai Help for Kids™.

Hyundai Help for Kids™ offers funding to child-focused organisations and charities working to improve the lives of children all over Australia - from supporting community initiatives, to providing much-needed medical equipment.

So when you buy a Hyundai, you're buying more than just a car. Together with Hyundai Help for Kids™, you're empowering thousands of young Australians and giving them a better future.



* Hyundai Help for Kids™ is a registered trade mark of Hyundai Motor Company.

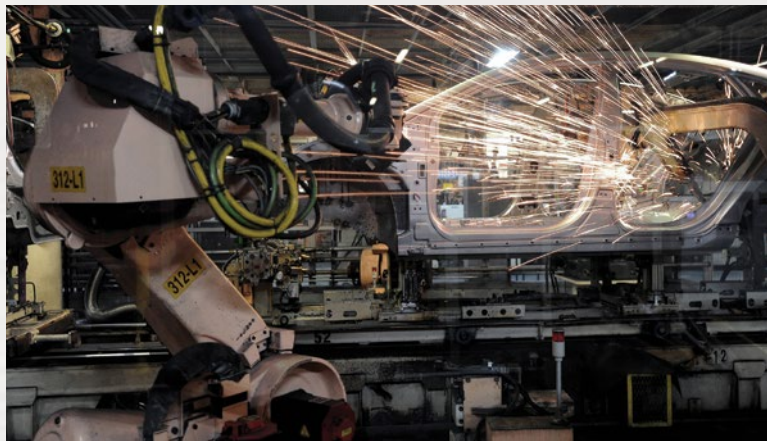
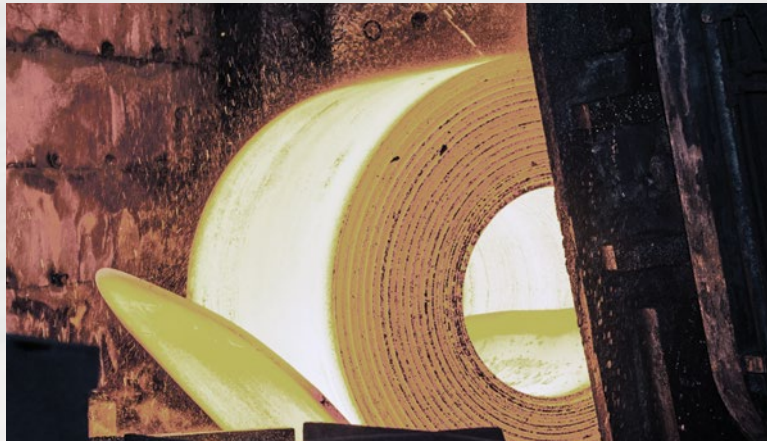
Santa Fe.

Australia, in our DNA.

We're one of the biggest car manufacturers in the world – and one of the fastest growing global car brands.

We're also the only car company in the world producing its own steel, because we know the best steel makes for the strongest cars.

That's why we source the majority of our high quality iron ore from right here, in Australia's backyard. So now, when you buy a new Hyundai, you know you're driving a car that's directly connected to home.





Santa Fe.

 Like us at facebook.com/hyundaiaustralia

 Follow us at twitter.com/hyundaiaus

Hyundai Motor Company Australia

394 Lane Cove Road, Macquarie Park, NSW Australia 2113

www.hyundai.com.au

Hyundai Motor Company (HMC) and the Hyundai Motor Company Australia (HMCA) each reserve the right to alter vehicle specifications and equipment levels without notice. Some equipment featured on the cars in this brochure may not be available in Australia or may be optional. To the extent permitted by law, neither HMC nor HMCA shall be liable to any person as a result of reliance on the content of this brochure. Please consult your Hyundai Dealer for the latest specifications, equipment levels, options, prices, colours and vehicle availability. Metallic and mica paint are optional extras. Note: information in this brochure is current as at 01/07/2017. Part No. DM0817B.