

Jeep
PATRIOT



2013



IT'S CROWNED THE MOST
AFFORDABLE SUV IN CANADA⁽¹⁾

BEST-IN-CLASS
CAPABILITY⁽²⁾

UNSURPASSED
TOWING⁽³⁾

MOST FUEL-EFFICIENT
4x4 SUV IN CANADA⁽⁴⁾

BEST-IN-CLASS⁽⁵⁾
CARGO VOLUME



SUPER 4WD NATURAL



FOR A SERIOUS EXPLORATION OF WORLDLY WILDS, THE 2013 JEEP® PATRIOT EXPANDS YOUR VIEW WITH MODERN AMENITIES AND TRAIL RATED® CAPABILITY. THIS ALL-WEATHER TRAVELLER, WITH EITHER THE FREEDOM DRIVE I® OR FREEDOM DRIVE II® 4WD SYSTEM, FEARS NO MUD, ICE, OR SNOW, AND FULLY RETAINS ITS AUTHENTIC JEEP BRAND ROOTS.



EXPLORE YOUR CALL TO THE WILD

FREEDOM DRIVE I®

Plow through deeper snow and other harsh conditions with the help of active, full-time 4WD capability with LOCK mode. Its Electronically Controlled Coupling constantly monitors wheel slippage and transfers torque to the axle that can use it most. In tough conditions, the system can be locked 50/50 front/rear for added low-speed capability and control. Front-wheel drive adds efficiency while driving under normal road conditions. Available.

TRAIL RATED®

MANOEUVRABILITY

TRACTION

WATER FORDING⁽⁶⁾

ARTICULATION

GROUND CLEARANCE

FREEDOM DRIVE II®

Go forth with confidence, harnessing the power infused in this Trail Rated full-time 4WD system with LOCK mode. Tame all terrain, with Hill Descent Control with grade sensing, Hill Start Assist, skid plates, tow hooks, increased ground clearance, all-terrain tires, engine oil cooler, and 140-amp alternator — all matched to a Continuously Variable Automatic Transaxle (CVT2L) with a 19:1 crawl ratio. Available.

2.4L DOHC 16V VVT ENGINE

This powerhouse achieves a fuel economy rating of 7.0 L/100 km (40 mpg) highway* while delivering 172 hp supported by 165 lb-ft of torque. The engine's dual Variable Valve Timing (VVT) electronically controls both intake and exhaust valves, four valves per cylinder, helping to improve power and encourage an economic performance. Standard.

CVT

CVT paired with Auto/Stick™ uses a 30 mm high-strength multilayer steel drive belt and two active V-pulleys to vary vehicle speed. The Auto/Stick shifter puts optimal vehicle performance under your command. The result: a smooth, quiet ride that's very economical. Available.

*See page 14 for full details.



BEST-IN-CLASS⁽⁵⁾ REAR-SEAT LEGROOM

Your passengers in the back seat can stretch out and relax in Patriot, with its Best-in-Class⁽⁵⁾ rear-seat legroom and seating for three adults. In fact, Patriot has better rear-seat legroom than many mid-size SUVs. Patriot can carry all your passengers in capable comfort.

Patriot aims to please with soft-touch interior accents and available premium leather-faced seats. Configure the 60/40 split-folding reclining rear seats to carry your gear, people, and four-footed friends. Handy conveniences like the removable/rechargeable flashlight and illuminated front console cup holders help make everyday travels and everywhere adventures that much more enjoyable. Patriot's configurable interior opens up to reveal 1795 L of cargo room when the standard 60/40 split-folding rear seats are laid down flat. Go for Patriot's Sun and Sound Group for fresh air via the sunroof and crystal-clear sound from the premium audio system that includes a subwoofer and flip-down liftgate speakers.





PATRIOT NORTH EDITION WILL MOVE YOU WITH ITS COMFORTABLY CONVENIENT FEATURES, CLASSIC JEEP[®] SILHOUETTE, AND ATTRACTIVE VALUE. DEEP-TINT SUNSCREEN GLASS AND AIR CONDITIONING HELP KEEP YOU LOOKING AND FEELING COOL, WHILE FOLD-AWAY, POWER, AND HEATED MIRRORS HELP MAINTAIN A CLEAR VIEW WHEN THE COLD WEATHER APPEARS. REMOTE KEYLESS ENTRY ALLOWS QUICK AND EASY ACCESS TO PREMIUM CLOTH SEATS, POWER WINDOWS AND LOCKS, FOLD-FLAT FRONT-PASSENGER SEAT, AND RECLINING REAR SEATS. THE NORTH EDITION ARRIVES READY TO SERVE, WITH UNIQUE STYLE, PREMIUM FEATURES, AND LEGENDARY CAPABILITY.

NORTH ALL-SEASON GROUP. When the weather gets tough, no one wants to get caught in the mud, snow, or rain. Drive safely and comfortably with this popular group. It offers the warmth of heated front seats and the convenience of audio controls mounted on a luxurious leather-wrapped steering wheel, plus 17-inch aluminum wheels. Remote start is added to the group with the automatic transmission. Available on both 4x4 and 4x2 models.

CLASSIC JEEP BRAND STYLE. Tell the world you're fully capable of handling whatever the road ahead puts in front of you. Jeep vehicles are recognized as some of the most capable on the road today. Their classic styling, in the shape of round headlamps, trapezoidal wheel arches, the seven-slot grille, and short front and rear overhanging bumpers, says it all. Nothing keeps you moving forward like a Jeep brand vehicle.





LIMITED

Impressive inside and out. Patriot Limited delivers value infused with a high dose of style. A bright exhaust tip, 17-inch cast aluminum wheels, and bright accents on the front and rear fascia add shine. Inside, Limited's cabin aims to please with soft-touch surfaces, leather-faced seating and heated front seats, Automatic Temperature Control, and an Electronic Vehicle Information Centre. The six-way power driver's seat allows for customized comfort when listening to Limited's standard SiriusXM™ Satellite Radio⁽⁷⁾ and its wide world of entertainment, talk, and sports channels.



SPORT

Adventure enthusiasts get their game on with Sport. Patriot is Canada's most affordable SUV,⁽¹⁾ and with it comes a wide cache of standard equipment. Sport's technology serves you well and keeps you safe, with standard Electronic Stability Control;⁽⁸⁾ advanced multistage front and side-curtain air bags;⁽⁹⁾ and reactive front head restraints;⁽¹⁰⁾ to name a few. The 2.0L I-4 engine is mated to a 5-speed manual transmission, giving you 4x2 fuel economy up to 6.6 L/100 km (43 mpg) highway* that's typically found in many compact cars.



*See page 14 for full details.



GUARDIAN HERO

PATRIOT'S EMPHASIS ON PASSENGER SAFETY AND SECURITY IS EVIDENT WITH ITS 30-PLUS FEATURES THAT GUARD AND PROTECT. THE 2012 JEEP® PATRIOT EARNED RESPECT AND HIGH HONOURS FROM THE INSURANCE INSTITUTE FOR HIGHWAY SAFETY AS A "TOP SAFETY PICK" WHEN EQUIPPED WITH SIDE-SEAT AIR BAGS.⁽⁹⁾ YOUR ALL-WEATHER HERO IS ALWAYS ON DUTY — COME RAIN, SHINE, OR NEW-FALLEN SNOW.

ELECTRONIC STABILITY CONTROL.⁽⁸⁾

Integrates a host of systems that work together to help you safely move forward. The system's four-wheel antilock brake system with hydraulic Brake Assist and Electronic Brake-Force Distribution automatically adjusts the amount of force applied to each brake based on road conditions. All-speed traction control and Electronic Roll Mitigation (ERM) constantly monitor driver input against the vehicle's actual course and, when needed, ERM automatically helps provide braking to the appropriate wheels and reduces engine power when overly sharp steering and/or impending wheel lift is detected. Standard.

SAFETY CAGE. A Jeep engineered safety cage structure contains a front crumple zone designed to absorb energy during a frontal impact.

TIRE PRESSURE MONITORING SYSTEM.

Embedded sensors monitor the pressure in the tires and immediately notify the driver when levels drop below the minimum acceptable level. Standard.

HEATED POWER EXTERIOR MIRRORS.

Melt snow and ice off your sideview mirrors as you warm up your interior or while driving. Available.



WITH SIDE SEAT AIR BAGS





ADVANCED MULTISTAGE FRONT AND SIDE-CURTAIN AIR BAGS.⁽⁹⁾ These air bags provide nearly instantaneous occupant protection by matching air bag output to impact severity. Standard.

REACTIVE FRONT HEAD RESTRAINTS.⁽¹⁰⁾ In the event of a rear-end collision, the head restraint moves forward and upward to decrease the space between the head restraint and the occupant's head, thereby helping to reduce the chance of injury. Standard.

HILL START ASSIST. This system works to delay vehicle rollback when starting on an incline. It holds the vehicle stationary for two seconds after the driver's foot is removed from the brake pedal, allowing time to apply the throttle. Standard.

SENTRY KEY® ANTITHEFT ENGINE IMMOBILIZER. A unique embedded key code matched only to your vehicle helps keep your Patriot safely where it belongs. Standard.

HALOGEN HEADLAMPS AND FOG LAMPS. These bright sources of light improve down-road visibility at night or during inclement weather. Headlamps standard. Fog lamps are available.

ENHANCED ACCIDENT RESPONSE SYSTEM (EARS). Should air bags deploy, EARS switches on the interior and hazard lamps, unlocks the doors, and shuts off fuel supply after the vehicle has stopped. Standard.

WELL-CONNECTED

Uconnect™ acts as the central hub for your most important media, allowing you to stay connected, informed, entertained, and focused on driving. Voice Command⁽¹⁾ allows you to use your voice to select AM/FM radio stations and SiriusXM™ Satellite Radio⁽⁷⁾ channels, as well as make/receive calls and select destination entries with the available navigation.⁽¹²⁾ You'll have multiple ways to access audio, including a USB port, iPod® control with Voice Command,⁽¹¹⁾ Bluetooth® streaming audio, and SiriusXM Satellite Radio⁽⁷⁾ which features song/artist alerts, game alerts, favourites, and replay (your first year of service is included). The available intuitive Garmin® navigation⁽¹²⁾ can locate nearby restaurants, shopping, hospitals, or points of local interest and provides easy-to-understand directions, including lane guidance. Top it all off with a system that is clever enough to synchronize with your phone's address book⁽¹³⁾ — up to 1000 entries — every time you get into your vehicle and you'll see how easy it is to keep in touch with the people, music, and devices that matter most.

MULTIMEDIA CENTRES

UCONNECT 130

- AM/FM/CD/MP3
- Auxiliary input jack

UCONNECT 230

Includes Uconnect 130 features, plus:

- DVD playback capability
- Six-disc in-dash player

UCONNECT 430

Includes Uconnect 230 features, plus:

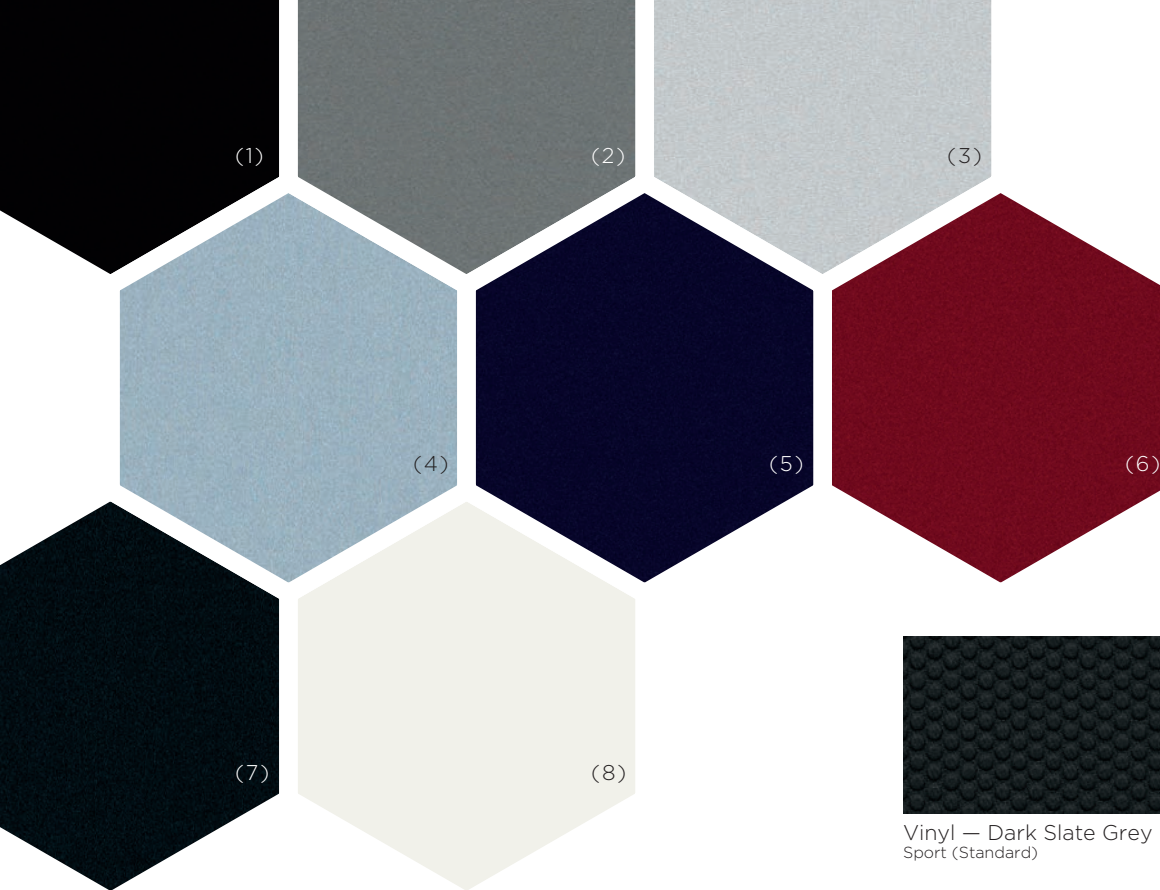
- 6.5-inch touch screen
- 28GB hard-disc drive
- Single-CD player
- USB port on radio

UCONNECT 430N

Includes Uconnect 430 features, plus:

- Garmin GPS navigation⁽¹²⁾





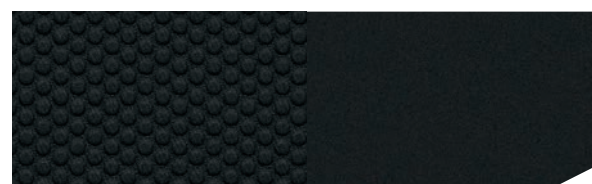
- 1 Black
- 2 Mineral Grey Metallic
- 3 Bright Silver Metallic
- 4 Winter Chill Pearl
- 5 True Blue Pearl
- 6 Deep Cherry Red Crystal Pearl
- 7 Black Forest Green Pearl
- 8 Bright White



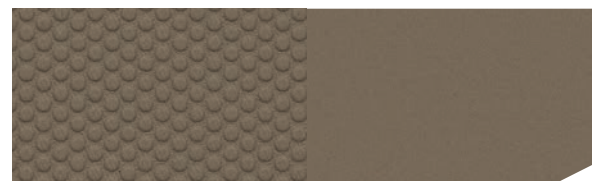
16-inch Styled Steel
Sport and North Edition (Standard)



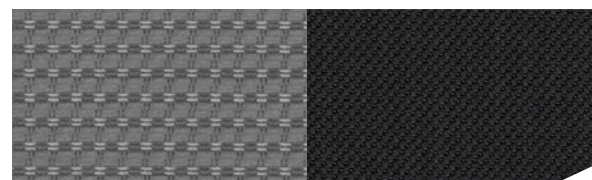
17-inch Aluminum
Limited (Standard)
Sport and North Edition (Available)



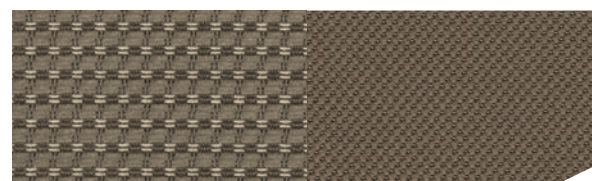
Vinyl — Dark Slate Grey
Sport (Standard)



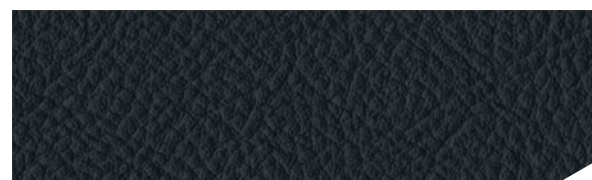
Vinyl — Light Pebble Beige
Sport (Standard)



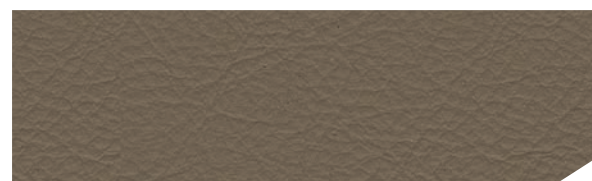
Cloth — Dark Slate Grey
North Edition (Standard), Sport (Available)



Cloth — Light Pebble Beige
North Edition (Standard), Sport (Available)



Leather-faced — Dark Slate Grey
Limited (Standard)



Leather-faced — Light Pebble Beige
Limited (Standard)



SPORT 4x2/4x4



NORTH EDITION 4x2/4x4



LIMITED 4x2/4x4



POWERTRAIN & PERFORMANCE

- 2.0L I-4 DOHC 16V Dual VVT/5-speed manual
- 2.0L I-4 DOHC 16V Dual VVT/CVT
- 2.4L I-4 DOHC 16V Dual VVT/5-speed manual
- 2.4L I-4 DOHC 16V Dual VVT/CVT
- 2.4L I-4 DOHC 16V Dual VVT/CVT II
- Touring suspension
- Rear stabilizer bar
- Firm-feel power steering
- 120-amp alternator
- 525-amp maintenance-free battery

INTERIOR AMENITIES

- Vinyl seating
- Uconnect™ 130 with four speakers
- Auxiliary input jack for mobile devices
- Removable/rechargeable flashlight
- Illuminated front cup holders
- Map/dome reading lamps
- Tilt steering column
- Steering wheel-mounted cruise control
- Outside temperature display
- 12-volt auxiliary power outlet
- Rear 60/40 folding seat
- Fold-flat load floor storage
- Full-length floor console
- Bright interior accents
- Luxury front and rear floor mats

SAFETY & SECURITY

- Advanced multistage front air bags⁽⁹⁾
- Supplemental front and rear side-curtain air bags⁽⁹⁾
- Reactive front head restraints⁽¹⁰⁾
- Electronic Stability Control⁽⁸⁾ with Electronic Roll Mitigation, Brake Assist, and Hill Start Assist
- Four-wheel antilock brakes, front disc/rear drum
- Sentry Key® anti-theft engine immobilizer
- Tire Pressure Monitoring System
- Child Seat Anchor System (LATCH)

EXTERIOR FEATURES

- 16-inch styled-steel wheels
- P205/70R17 Goodyear® BSW All-Season tires
- Liftgate door with fixed glass
- Manual foldaway mirrors
- Accent-colour liftgate appliqué
- Body-colour grille and fascia
- Halogen headlamps
- Solar-control glass
- Rear window defroster, wiper/washer

4x4 ADDS

- Freedom Drive I®
- 25mm increase in ride height
- 4x4 Badge

OPTIONS

- Tire and Wheel Group
- Freedom Drive II® Off-Road Group (4x4 only)
- SiriusXM™ Satellite Radio Group⁽⁷⁾ with one-year subscription
- Supplemental front seat-side air bags⁽⁹⁾
- Air conditioning
- Uconnect 230
- Full-size spare tire
- Premium cloth bucket seats
- Smoker's Group



POWERTRAIN & PERFORMANCE

- 2.0L I-4 DOHC 16V Dual VVT/5-speed manual
- 2.0L I-4 DOHC 16V Dual VVT/CVT
- 2.4L I-4 DOHC 16V Dual VVT/5-speed manual
- 2.4L I-4 DOHC 16V Dual VVT/CVT
- 2.4L I-4 DOHC 16V Dual VVT/CVT II

DIFFERENCES/UPGRADES OVER SPORT

- Premium cloth seating
- Rear 60/40 split reclining seat
- Height-adjustable driver seat
- Front-passenger forward-fold-flat seat
- Deep-tint sunscreen glass
- Power heated mirrors; manual folding
- Illuminated entry
- Air conditioning
- 115-volt auxiliary power outlet
- Remote keyless entry
- Body-colour door handles
- Body-colour liftgate appliqué
- Fog lamps
- Speed-sensitive power door locks
- Power windows with driver one-touch down

OPTIONS

- Tire and Wheel Group
- SiriusXM Satellite Radio Group⁽⁷⁾
- Sun and Sound Group
- Trailer Tow Prep Group
- Security and Cargo Convenience Group
- Premium Sound Group
- Uconnect 430 with 6.5-inch touch screen
- Uconnect 230
- SiriusXM Satellite Radio⁽⁷⁾ with one-year subscription
- Full-size spare tire
- North All-Season Group
- Freedom Drive II Off-Road Group (4x4 only)
- Smoker's Group



POWERTRAIN & PERFORMANCE

- 2.4L I-4 DOHC 16V Dual VVT/5-speed manual
- 2.4L I-4 DOHC 16V Dual VVT/CVT
- 2.4L I-4 DOHC 16V Dual VVT/CVT II (4x4 only)

DIFFERENCES/UPGRADES OVER NORTH

- Leather-faced seating
- Four-wheel disc antilock brakes
- Driver manual lumbar adjuster
- Heated front seats
- Leather-wrapped steering wheel with audio controls
- Leather-wrapped park brake handle
- Air conditioning with Automatic Temperature Control
- Power six-way driver seat
- Electronic Vehicle Information Centre
- Body-colour fascia with bright insert
- Bright side roof rails
- Bright exhaust tip
- SiriusXM Satellite Radio⁽⁷⁾ with one-year subscription
- 17-inch aluminum wheels
- Silver interior accents

OPTIONS

- Freedom Drive II Off-Road Group (4x4 only)
- Sun and Sound Group
- Trailer Tow Prep Group
- Security and Cargo Convenience Group
- Premium Sound Group
- Uconnect 230
- Uconnect 430
- Uconnect 430N
- Uconnect hands-free communication with Bluetooth⁽¹¹⁾
- Smoker's Group



SPECIFICATIONS[†]

Weight	Sport and North	Limited
4x2, kg (lb)	1411 (3111) — 2.0L manual	1451 (3199) — 2.4L manual
4x4, kg (lb)	1485 (3273) — 2.4L manual	1518 (3346) — 2.4L manual
Towing ⁽¹⁴⁾		
Maximum Towing Capacity, kg (lb)	907 (2000)	907 (2000)
Exterior		
Wheelbase	2635 (103.7)	2635 (103.7)
Overall Height, 4x2/4x4	1663 (65.5)/1696 (66.8)	1663 (65.5)/1696 (66.8)
Front Track	1520 (59.8)	1520 (59.8)
Rear Track	1520 (59.8)	1520 (59.8)
Overall Width	1757 (69.2)	1757 (69.2)
Overall Length	4414 (173.8)	4414 (173.8)
Ground Clearance/ 4x4 with Freedom Drive II®	205 (8.1)/231 (9.1)	205 (8.1)/231 (9.1)
Interior	Front	Rear
Headroom	1040 (41.0)	1013 (39.9)
Legroom	1032 (40.6)	1001 (39.4)
Hip Room	1328 (52.3)	1295 (51.0)
Shoulder Room	1385 (54.5)	1372 (54.0)
Capacities	Sport and North	Limited
Cargo, Rear Seat Up, L (cu ft)	651 (23)	651 (23)
Cargo, Rear Seat Folded, L (cu ft)	1514 (53.5)	1514 (53.5)
Seating Capacity	5	5
Volume Index, L (cu ft)	3522 (124)	3522 (124)
Fuel Tank, 4x2, L (gal)	51.5 (11.4)	51.5 (11.4)
Fuel Tank, 4x4, L (gal)	51.1 (11.2)	51.1 (11.2)
GVWR		
GVWR, kg (lb)	2075 (4575)	2075 (4575)

[†]All dimensions are in millimetres (inches) unless otherwise noted.

ENGINE	Horsepower	Torque (lb-ft)
2.0L I-4 DOHC (4x2)/5-speed manual	158	141
2.0L I-4 DOHC (4x2)/CVT		
2.4L I-4 DOHC (4x2)/5-speed manual	172	165
2.4L I-4 DOHC (4x4)/5-speed manual		
2.4L I-4 DOHC (4x2)/CVT		
2.4L I-4 DOHC (4x4)/CVT II		

FUEL EFFICIENCY L/100 km (mpg)

Based on 2013 EnerGuide highway fuel consumption ratings. Government of Canada test methods used. Your actual fuel consumption will vary based on driving habits and other factors. Ask your retailer for the EnerGuide information.

		City	Highway
2.0L I-4 DOHC/5-speed manual	4x2	8.9 (32)	6.6 (43) ⁽¹⁾
2.0L I-4 DOHC/CVT	4x2	9.3 (30)	7.2 (39)
2.4L I-4 DOHC/5-speed manual	4x2	9.0 (31)	7.0 (40) ⁽²⁾
	4x4	9.2 (31)	7.2 (39)
2.4L I-4 DOHC/CVT + CVT II	4x2	9.6 (29)	7.3 (39)
	4x4	9.9 (29)	7.6 (37)

⁽¹⁾As described on page 8. ⁽²⁾As described on page 4.

PACKAGE DETAILS

TIRE AND WHEEL GROUP

- P215/65R17 OWL All-Terrain tires
- 17-inch aluminum wheels

FREEDOM DRIVE II OFF-ROAD GROUP (4x4 ONLY)

- Four-wheel-drive off-road mode
- 140-amp alternator
- Hill Descent Control
- Brake-lock differential
- All-season floor mats
- Fog lamps
- Trail Rated® Badge
- Engine oil cooler
- P215/65R17 OWL All-Terrain tires
- 17-inch aluminum wheels
- Tow hooks
- Fuel tank skid plate shield
- Transmission/engine oil pan skid plate
- Height-adjustable driver seat
- Bright exhaust tip
- Full-size spare tire (Limited only)

SIRIUSXM™ SATELLITE RADIO GROUP⁽⁷⁾

- Auto-dimming rearview mirror with microphone
- SiriusXM Satellite Radio⁽⁷⁾ with one-year subscription
- Uconnect™ hands-free communication with Bluetooth®⁽¹¹⁾
- Remote USB port

SUN AND SOUND GROUP

- Power sunroof
- Nine Boston Acoustics® speakers with subwoofer
- Two articulating liftgate speakers
- SiriusXM Satellite Radio⁽⁷⁾ with one-year subscription
- Leather-wrapped steering wheel

SECURITY AND CARGO CONVENIENCE GROUP

- Supplemental front-seat side air bags⁽⁹⁾
- Heated front seats
- Soft tonneau cover
- Auto-dimming rearview mirror
- Electronic Vehicle Information Centre
- Security alarm
- Adjustable roof rail crossbars
- Remote start system (requires CVT)
- Universal garage door opener⁽¹⁵⁾
- Tire Pressure Monitoring System
- Uconnect hands-free communication with Bluetooth®⁽¹¹⁾ (Limited only)
- Remote USB port (Limited only)

PREMIUM SOUND GROUP

- Nine Boston Acoustics® speakers with subwoofer
- Steering wheel-mounted audio controls
- Two articulating liftgate speakers
- Leather-wrapped steering wheel

UCONNECT 430

- 6.5-inch touch-screen display and 28GB hard drive

NORTH ALL-SEASON GROUP

- Heated front seats
- Steering wheel-mounted audio controls
- Leather-wrapped steering wheel
- P215/60R17 BSW All-Season touring tires
- 17-inch aluminum wheels
- Remote start system (requires CVT)

TRAILER TOW PREP GROUP

- Engine oil cooler
- Trailer tow wiring harness

For more information, please call
(800) 361-3700

or visit

jeep.ca



WITH SIDE SEAT AIR BAGS

About this Catalogue. Since the time of printing, some of the information you'll find in this catalogue may have been updated. Ask your retailer for details. Some of the equipment shown or described throughout this catalogue is available at extra cost. Specifications, descriptions, illustrative materials, and all competitive comparisons contained herein are as accurate as known at the time this publication was approved for printing. Chrysler Canada Inc. reserves the right to make changes at any time without notice and without incurring obligation. For the price of the model with the equipment you desire, or verification of specifications contained herein, see your Chrysler, Jeep, Dodge, Ram retailer. Chrysler, Jeep, the Jeep grille, Patriot, Freedom Drive I, Freedom Drive II, Sentry Key, SRT, and Trail Rated are registered trademarks and Uconnect is a trademark of Chrysler Group LLC. Auto/Stick is a trademark of Hurst Performance. Boston Acoustics and the Boston Acoustics logo are registered trademarks of Boston Acoustics, Inc. All rights reserved. Bluetooth is a registered trademark of Bluetooth SIG, Inc. Goodyear is a registered trademark of The Goodyear Tire & Rubber Company. iPod is a registered trademark of Apple Inc. All rights reserved. SIRIUS, XM, and related marks and logos are trademarks of SiriusXM Inc. Garmin and the Garmin logo are registered trademarks of Garmin, Ltd. or its subsidiaries and are registered in one or more countries. All rights reserved. Cummins is a registered trademark of Cummins, Inc.

Warranties. 2013 Chrysler, Jeep, Dodge, and Ram vehicles are backed by a 5-year or 100,000-kilometre* fully transferable Powertrain Limited Warranty with \$0 deductible plus 24-hour roadside assistance. †SRT vehicles are backed by a 3-year or 60,000-kilometre* fully transferable Powertrain Limited Warranty with \$0 deductible plus 24-hour roadside assistance. Basic Warranty coverage is for 3 years or 60,000 kilometres.* Rust-through coverage on all body sheet metal is for 3 years. The Cummins Turbo Diesel engine is protected by a separate Limited Warranty, covering the engine for 5 years or 160,000 kilometres.*

*Whichever comes first. †Some conditions may apply. The 5-Year/100,000-Kilometre Powertrain Limited Warranty does not apply to vehicles sold for certain commercial uses or to SRT® models. See your retailer for details.

Disclaimers. 1) Based on 2012 *Ward's* Small Cross/Utility segmentation and MSRP of base models. 2) When properly equipped with Freedom Drive II. Based on 2012 *Ward's* Small Cross/Utility segmentation. Excludes other vehicles designed and manufactured by Chrysler Group LLC. 3) When properly equipped. Based on *Ward's* Small Cross/Utility segmentation. Excludes other vehicles designed and manufactured by Chrysler Group LLC. 4) Based on combined highway/city ratings for vehicles marketed as SUVs in Canada. Based on 2012 EnerGuide highway fuel consumption ratings. Government of Canada test methods used. Your actual fuel consumption will vary based on driving habits and other factors. Excludes other vehicles designed and manufactured by Chrysler Group LLC. 5) Based on 2012 *Ward's* Small Cross/Utility segmentation. Excludes other vehicles designed and manufactured by Chrysler Group LLC. 6) Do not attempt water fording unless depth is known to be less than 51 cm (20 inches). Traversing water can cause damage that may not be covered by the new vehicle warranty. Always off-road responsibly in approved areas. 7) Requires SiriusXM™ radio subscriptions governed by SIRIUS terms and conditions available at siriuscanada.ca. 8) No system can repeal the laws of physics or overcome careless driving actions. Performance is limited by available traction, which snow, ice, and other conditions can affect. When the warning lamp flashes, the driver needs to use less throttle and adapt speed and driving behaviour to prevailing road conditions. 9) The advanced front air bags in this vehicle are certified to the federal regulations for advanced air bags. Children 12 years old and younger should always ride buckled up in a rear seat. Infants in rear-facing child restraints should never ride in the front seat of a vehicle with a passenger front air bag. All occupants should always wear their lap and shoulder belts properly. 10) Always sit properly with the head restraint properly adjusted. Never place anything in front of the head restraint. 11) Must use Bluetooth-compatible phone. Driving while distracted can result in loss of vehicle control. Only use mobile phones and other devices, even with voice commands, when it is safe to do so. 12) Never program while driving. GPS mapping may not be detailed in all areas or reflect current road regulations. 13) Phone must support Bluetooth Phone Book Access Profile (PBAP). 14) When properly equipped. 15) Not compatible with all garage door openers.

Service Contracts. Chrysler Canada Inc. has a vested interest in your satisfaction and owner experience with your new vehicle. Chrysler Canada Service contracts offer extended service and maintenance plans to help ensure you'll enjoy your vehicle for many years down the road – for just pennies a day. For more information on comprehensive vehicle coverage, see your local Chrysler, Jeep, Dodge, and Ram retailer, call 1-800-465-2001 or visit chryslercanada.ca/owners.