

Jeep
COMPASS



2013





**CROWNED AS THE
MOST FUEL-EFFICIENT
4X4 SUV IN CANADA⁽¹⁾**

ONE OF THE MOST
AFFORDABLE
SUVs IN CANADA⁽²⁾

BEST-IN-CLASS
CAPABILITY⁽³⁾

UNSURPASSED TOWING⁽⁴⁾

BEST-IN-CLASS⁽⁵⁾
CARGO VOLUME

SUPER 4WD NATURAL



FOR A SERIOUS EXPLORATION OF WORLDLY WILDS, THE CAPABLE 2013 JEEP® COMPASS WILL EXPAND YOUR HORIZONS. WITH A TRAIL RATED® SOUL, THIS ALL-WEATHER TRAVELLER FEARS NO MUD, ICE, OR SNOW, AND FULLY RETAINS ITS AUTHENTIC JEEP BRAND ROOTS.





TRAIL RATED.®

ARTICULATION

WATER FORDING⁽⁶⁾

MANOEUVRABILITY

GROUND CLEARANCE

TRACTION

EXPLORE YOUR CALL TO THE WILD

FREEDOM DRIVE I®

Plow through deeper snow and other harsh or inclement conditions with the help of active, full-time 4x4 capability with LOCK mode. Its Electronically Controlled Coupling constantly monitors wheel slippage and transfers torque to the axle that can use it most. In tough conditions, the system can be locked 50/50 front/rear for added low-speed capability and control. Front-wheel drive adds efficiency while driving under normal road conditions. Available.

FREEDOM DRIVE II®

Go forth with confidence, harnessing the power infused in this Trail Rated full-time 4WD system with LOCK mode. Tame all terrain, thanks to the system's Hill Descent Control with grade sensing, Hill Start Assist, skid plates, tow hooks, increased ground clearance, all-terrain tires, engine oil cooler, and 140-amp alternator — all matched to a Continuously Variable Automatic Transaxle (CVT II) with a 19:1 crawl ratio. Available.

2.4L DOHC 16V VVT ENGINE

This powerhouse achieves a fuel economy rating of up to 7.0 L/100 km (40 mpg) highway* while delivering 172 hp supported by 165 lb-ft of torque. The engine's dual Variable Valve Timing (VVT) electronically controls both intake and exhaust valves, four valves per cylinder, helping to improve power and encourage an economical performance. Standard.

CVT

CVT paired with Auto/Stick™ uses a 30 mm high-strength multilayer steel drive belt and two active V-pulleys to vary vehicle speed. The Auto/Stick shifter puts optimal vehicle performance under your command. The result: a smooth, quiet ride that's very economical. Available.

*See page 13 for full details.







**BEST-IN-CLASS^(S) REAR-SEAT
LEGROOM**

Your passengers in the back seat can stretch out and relax in Compass. With its Best-in-Class rear-seat legroom and seating for three adults, Compass can carry all your passengers in capable comfort.

**BEST-IN-CLASS^(S)
CARGO VOLUME**

Compass makes the most out of its Best-in-Class cargo accolade with cubbies and cup holders placed throughout the cabin, including two illuminated landing spots for your morning cup-to-go.

SUN AND SOUND

Go for the Sun and Sound Group for fresh air and clear sound via the power sunroof, SiriusXM™ Satellite Radio⁽⁷⁾ with one-year subscription, and an audio system that includes nine Boston Acoustics® speakers with subwoofer and flip-down liftgate speakers.



NORTH EDITION'S STANDARD ISSUE OFFERS ILLUMINATED ENTRY AT ALL DOORWAYS, AIR CONDITIONING, A HEIGHT-ADJUSTABLE FRONT DRIVER'S SEAT, AND A FOLD-FLAT FRONT-PASSENGER SEAT THAT ACTS AS A STABLE LANDING SPOT FOR LAPTOPS. THE 60/40 SPLIT-FOLDING REAR SEATS HAVE A RECLINE FEATURE THAT ALLOWS FOR UP TO 12 DEGREES OF ADDED COMFORT.

North Edition's distinctive profile includes an exclusive "North Edition" liftgate badge, deep-tint sunscreen glass, and bright 17-inch cast aluminum wheels.

NORTH ALL-SEASON GROUP. When the weather gets tough, no one wants to get caught in the mud, snow, or rain. Drive safely and comfortably with this popular group. It offers the warmth of heated front seats, the luxury of a leather-wrapped steering wheel with audio controls, and the comfort of remote start (with CVT transaxle). Available on both 4x2 and 4x4 models.

PREMIUM SOUND. The available premium sound system transmits 368 watts of power via nine Boston Acoustics® speakers, including a subwoofer and flip-down liftgate speakers. Audio controls are conveniently located on the leather-wrapped steering wheel.





LIMITED

Limited's well-appointed cabin surrounds you and your passengers with beautiful amenities while you move confidently forward. Limited arrives with a long list of standard luxuries, including automatic temperature control, heated front seats, ultra-bright 18-inch aluminum wheels, leather-faced seating, a leather-wrapped steering wheel with audio and cruise controls, six-way power adjustable driver's seat, lumbar adjustment, and a fold-flat front-passenger seat. SiriusXM™ Satellite Radio,⁷⁾ including one-year subscription, also comes standard.



SPORT

Adventure enthusiasts are invited to get their best game on with Compass Sport. A roster of strong and standard features will accompany you, including 17-inch aluminum wheels, projector fog lamps, a four-wheel antilock brake system, Electronic Stability Control® with Electronic Roll Mitigation, Hill Start Assist, Hydraulic Brake Assist, and Electronic Brake-Force Distribution. Sport's standard 2.0L I-4 engine is matched to a 5-speed manual transaxle that delivers up to 6.6 L/100 km (43 mpg)* for efficient highway travel.



⁷⁾See page 13 for full details.

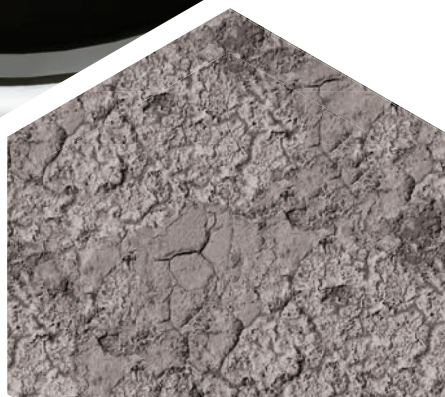
GUARDIAN HERO

PEACE OF MIND TAKES YOU FAR. HEAD OUT WITH CONFIDENCE. A ROBUST SET OF MORE THAN 30 STANDARD AND AVAILABLE SAFETY AND SECURITY FEATURES ARE IN PLACE, KEEPING WATCH ON THE TRAIL AND ON THE ROAD. A JEEP® ENGINEERED SAFETY CAGE STRUCTURE CONTAINS A FRONT CRUMPLE ZONE SPECIFICALLY DESIGNED TO ABSORB ENERGY DURING A FRONTAL IMPACT. YOUR SAFETY AND SECURITY IS OUR CONCERN.

ELECTRONIC STABILITY CONTROL.[®] Integrates a host of systems that work together to help you safely move forward. The system's four-wheel antilock brake system with hydraulic Brake Assist and Electronic Brake-Force Distribution automatically adjusts the amount of force applied to each brake based on road conditions. All-Speed Traction Control and Electronic Roll Mitigation (ERM) constantly monitor driver input against the vehicle's actual course. When needed, ERM automatically helps provide braking to the appropriate wheels and reduces engine power when overly sharp steering and/or impending wheel lift is detected. Standard.

TIRE PRESSURE MONITORING SYSTEM. Embedded sensors continuously monitor tire pressure and immediately notify the driver when levels drop below the minimum acceptable level. Standard. Tire pressure monitoring display. Available.

HILL START ASSIST. This system works to prevent Compass from rolling when starting on an up- or down-hill gradient. It holds the vehicle stationary for two seconds after the driver's foot is removed from the brake pedal, allowing time to apply the throttle. Standard.





ADVANCED MULTISTAGE FRONT AND SIDE-CURTAIN AIR BAGS.⁽⁹⁾ These air bags provide nearly instantaneous occupant protection by matching air bag output to crash severity. Standard.

FRONT-SEAT SIDE AIR BAGS.⁽⁹⁾ These deploy from the outboard side of each front seat to enhance protection of the driver and front passenger in certain impacts. Each side air bag has its own sensor to autonomously trigger the air bag on the side where the impact occurs. Available.



ENHANCED ACCIDENT RESPONSE SYSTEM (EARS). Should air bags deploy, EARS switches on the interior and hazard lamps, unlocks the doors, and cuts off the fuel supply after the vehicle has stopped. Standard.

HEATED POWER EXTERIOR MIRRORS. Melt snow and ice off your sideview mirrors as you warm up your interior. This feature also helps keep your mirrors free of ice as you drive. Available.



REACTIVE FRONT HEAD RESTRAINTS.⁽¹⁰⁾ In the event of a rear-end collision, the head restraint moves forward and upward to decrease the space between the head restraint and the occupant's head, thereby helping to reduce the chance of injury. Standard.

WELL-CONNECTED

Uconnect™ acts as the central hub for your most important media, allowing you to stay connected, informed, entertained, and focused on driving. Voice Command⁽¹⁾ allows you to use your voice to select AM/FM radio stations and SiriusXM™ Satellite Radio⁽²⁾ channels, as well as make/receive calls and select destination entries with the available navigation.⁽²⁾ You'll have multiple ways to access audio, including a USB port, iPod® control with Voice Command,⁽¹⁾ Bluetooth® streaming audio and SiriusXM Satellite Radio⁽²⁾ which features song/artist alerts, game alerts, favourites, and replay (your first year of service is included). The available intuitive Garmin® navigation⁽²⁾ can locate nearby restaurants, shopping, hospitals, or points of local interest and provides easy-to-understand directions, including lane guidance. Top it all off with a system that is clever enough to synchronize with your phone's address book⁽¹³⁾ — up to 1000 entries — every time you get into your vehicle and you'll see how easy it is to keep in touch with the people, music, and devices that matter most.

MULTIMEDIA CENTRES

UCONNECT 130

- AM/FM/CD/MP3
- Auxiliary input jack

UCONNECT 230

Includes Uconnect 130 features, plus:

- Six-disc in-dash player
- DVD format capabilities

UCONNECT 430

Includes Uconnect 230 features, plus:

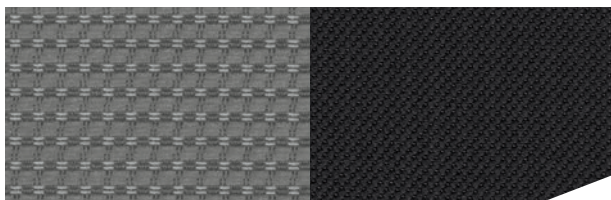
- 6.5-inch touch screen
- 28GB hard-disc drive
- USB port

UCONNECT 430N

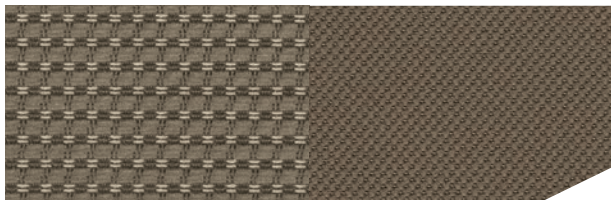
Includes Uconnect 430 features, plus:

- Garmin GPS navigation⁽¹²⁾

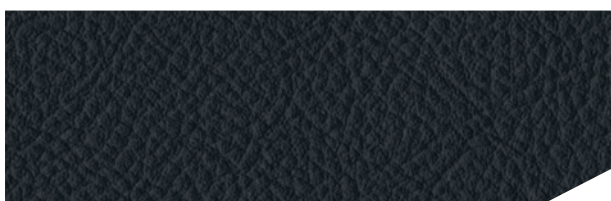




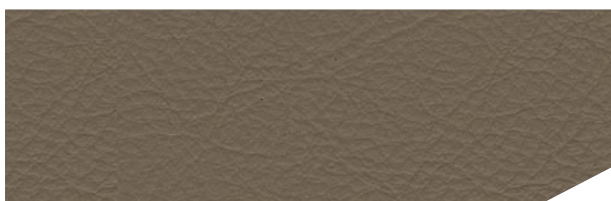
Cloth — Dark Slate Grey
Sport and North Edition (Standard)



Cloth — Light Pebble Beige
Sport and North Edition (Standard)



Leather-faced — Dark Slate Grey with
Light Slate Grey accent stitching
Limited (Standard)



Leather-faced — Light Pebble Beige with
Light Slate Grey accent stitching
Limited (Standard)



16-inch Machine-faced
Aluminum
Standard on Sport and
North Edition with 2.0L



17-inch Aluminum
Standard on Sport and
North Edition with 2.4L
Available on Limited with
Freedom-Drive II® Off-Road Group



18-inch Ultra-Bright
Machined Aluminum
Standard on Limited

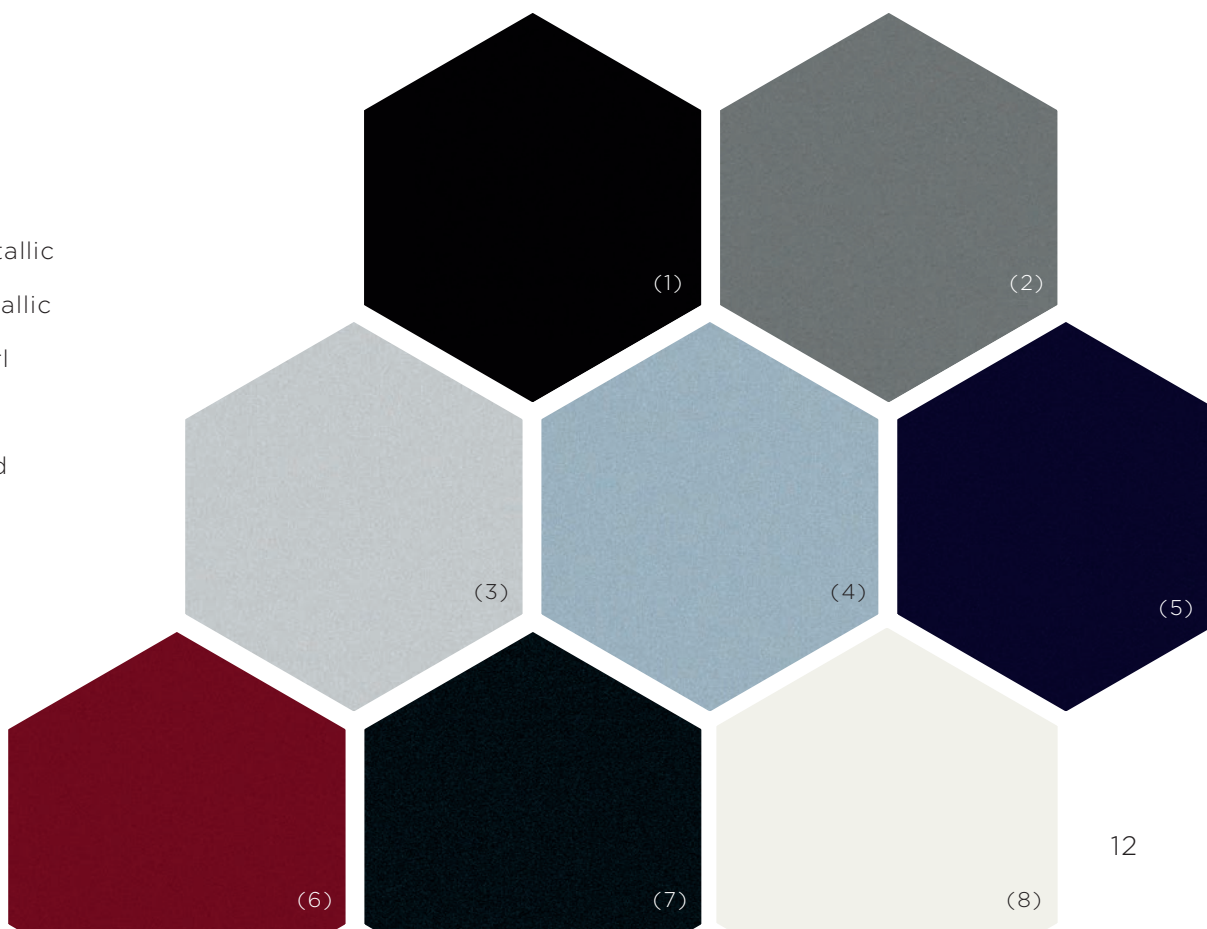


18-inch Chrome-Clad
Aluminum
Available on Limited



18-inch Aluminum
Available on Limited

- 1 Black
- 2 Mineral Grey Metallic
- 3 Bright Silver Metallic
- 4 Winter Chill Pearl
- 5 True Blue Pearl
- 6 Deep Cherry Red
Crystal Pearl
- 7 Black Forest
Green Pearl
- 8 Bright White





SPORT 4x2/4x4



*for interior colour reference only

POWERTRAIN & PERFORMANCE —

- 2.0L I-4 DOHC 16V Dual VVT with 5-speed manual
- 2.0L I-4 DOHC 16V Dual VVT with CVT
- 2.4L I-4 DOHC 16V Dual VVT with 5-speed manual
- 2.4L I-4 DOHC 16V Dual VVT with CVT
- 2.4L I-4 DOHC 16V Dual VVT with CVT II (4x4 only)
- Touring suspension
- Rear stabilizer bar
- Firm-feel power steering
- 120-amp alternator
- 525-amp maintenance-free battery

INTERIOR AMENITIES —

- Premium cloth seats
- Uconnect™ 130 with four speakers
- Auxiliary input for mobile devices
- Removable/rechargeable flashlight
- Map/dome reading lamps
- Tilt steering column
- Steering wheel-mounted cruise control
- Air filtering
- 12-volt auxiliary power outlet
- Rear 60/40 folding seat
- Fold-flat load floor storage
- Full-length floor console
- Bright interior accents

SAFETY & SECURITY —

- Advanced multistage front air bags^(*)
- Supplemental front and rear side-curtain air bags^(*)
- Reactive front head restraints^(*)
- Electronic Stability Control^(*) with Electronic Roll Mitigation, Brake Assist, and Hill Start Assist
- Four-wheel antilock brakes, front disc and rear drum brakes
- Sentry Key® anti-theft engine immobilizer
- Tire Pressure Monitoring System
- Child seat anchor system (LATCH)
- Engine block heater

EXTERIOR FEATURES —

- 17-inch aluminum wheels and P215/60R17 Firestone® BSW touring tires with 2.4L
- 16-inch aluminum wheels and P205/70R16 BSW All-Season tires with 2.0L I-4 DOHC 16V Dual VVT
- Liftgate door with fixed glass
- Manual foldaway mirrors
- Bright side roof rails
- Lower bodyside accent cladding
- Halogen headlamps
- Premium fog lamps
- Solar-Control Glass
- Rear window defroster, wiper, and washer
- Compass badge
- Freedom-Drive I® with 4x4 badge (4x4 only)

OPTIONS —

- Freedom-Drive II® Off-Road Group (4x4 only)
- SiriusXM™ Satellite Radio^(*) Group
- Supplemental front-seat side air bags^(*)
- Air conditioning
- Uconnect 230
- Full-size spare tire
- Smoker's Group



NORTH EDITION 4x2/4x4



*for interior colour reference only

POWERTRAIN & PERFORMANCE —

- 2.0L I-4 DOHC 16V Dual VVT with 5-speed manual
- 2.0L I-4 DOHC 16V Dual VVT with CVT
- 2.4L I-4 DOHC 16V Dual VVT with 5-speed manual
- 2.4L I-4 DOHC 16V Dual VVT with CVT
- 2.4L I-4 DOHC 16V Dual VVT with CVT II (4x4 only)

DIFFERENCES/UPGRADES OVER SPORT —

- Rear 60/40 split recline seat
- Height-adjustable driver seat
- Front-passenger forward-fold-flat seat
- Deep-tint sunscreen glass
- Power, heated mirrors; manual foldaway
- Keyless entry
- Illuminated entry
- Air conditioning
- 115-volt auxiliary power outlet
- Power locks, power windows with one-touch down
- Body-colour door handles and liftgate appliqué

OPTIONS —

- Freedom Drive II Off-Road Group (4x4 Only)
- SiriusXM Satellite Radio^(*) Group
- Sun and Sound Group
- Trailer Tow Prep Group
- Security & Cargo Convenience Group
- North All-Season Group
- Premium Sound Group
- Uconnect 230
- Uconnect 430
- SiriusXM Satellite Radio^(*) with one-year subscription
- Full-size spare tire
- P215/65R17 OWL All-Terrain tires
- Smoker's Group

FUEL ECONOMY AND PERFORMANCE

Based on 2013 EnerGuide highway fuel consumption ratings. Government of Canada test methods used. Your actual fuel consumption will vary based on driving habits and other factors. Ask your retailer for EnerGuide information.

Engine and Transmission	Fuel Economy L/100 km (mpg)		Horsepower	Torque (lb-ft)
	City	Highway		
2.0L I-4 DOHC/5-Speed MTX (4x2)	8.9 (32)	6.6 (43) ^(*)	158	141
2.0L I-4 DOHC/CVT (4x2)	9.3 (30)	7.2 (39)		
2.4L I-4 DOHC/5-Speed MTX (4x2)	9.0 (31)	7.0 (40) ⁽²⁾	172	165
2.4L I-4 DOHC/5-Speed MTX (4x4)	9.2 (31)	7.2 (39)		
2.4L I-4 DOHC/CVT (4x2)	9.6 (29)	7.3 (39)		
2.4L I-4 DOHC/CVT or CVT II (4x4)	9.9 (29)	7.6 (37)		

^(*)As described on page 8. ⁽²⁾As described on page 4.



LIMITED 4x2/4x4



*for interior colour reference only

POWERTRAIN & PERFORMANCE

- 2.4L I-4 DOHC 16V Dual VVT with 5-speed manual
- 2.4L I-4 DOHC 16V Dual VVT with CVT
- 2.4L I-4 DOHC 16V Dual VVT with CVT II (4x4 only)

DIFFERENCES/UPGRADES OVER NORTH EDITION

- Leather-faced seating
- Manual driver lumbar adjuster
- Heated front seats
- Six-way power driver's seat
- Auto-dimming rearview mirror
- Bright exhaust tip
- Air conditioning with automatic temperature control
- Electronic Vehicle Information Centre (EVIC)
- Leather-wrapped steering wheel with audio controls
- SiriusXM™ Satellite RadioTM with one-year subscription
- 18-inch aluminum wheels
- Tire Pressure Monitoring System with tire pressure display
- Universal garage door opener⁽¹⁴⁾
- Silver interior accents

OPTIONS

- Freedom Drive II® Off-Road Group (4x4 only)
- Sun and Sound Group
- Trailer Tow Prep Group
- Security & Cargo Convenience Group
- Premium Sound Group
- Uconnect™ 230
- Uconnect 430
- Uconnect 430N
- Uconnect hands-free communication with BluetoothSM
- Full-size spare tire
- 18-inch aluminum wheels
- 18-inch chrome-clad aluminum wheels
- Smoker's Group

PACKAGE DETAILS

FREEDOM DRIVE II OFF-ROAD GROUP (WITH CVT II/4x4 ONLY)

- Four-wheel-drive off-road mode
- 140-amp alternator
- Hill Descent Control
- Brake lock differential
- Driver's seat height adjuster
- All-season floor mats
- Trail Rated® badge
- Engine oil cooler
- P215/65R17 OWL All-Terrain tires
- Goodyear® brand tires
- Tow hooks
- Fuel tank skid plate shield
- Transmission/engine oil pan skid plate
- 17-inch aluminum wheels (with Limited)

SIRIUSXM SATELLITE RADIO GROUPTM

- Auto-dimming rearview mirror with microphone
- SiriusXM Satellite Radio with one-year subscription
- Uconnect hands-free communication with BluetoothSM
- Remote USB port

SUN AND SOUND GROUP

- Power express-open/close sunroof
- Nine Boston Acoustics® speakers with two articulating liftgate speakers
- SiriusXM Satellite RadioTM with one-year subscription
- Leather-wrapped steering wheel with audio controls

TRAILER TOW PREP GROUP

- Engine oil cooler
- Trailer tow wiring harness

SECURITY & CARGO CONVENIENCE GROUP

- Supplemental front-seat side air bags⁽³⁾
- Heated front seats
- Soft tonneau cover
- Auto-dimming rearview mirror
- Electronic Vehicle Information Centre
- Security alarm
- Remote start system (with automatic only)
- Universal garage door opener⁽¹⁴⁾
- Tire Pressure Monitoring System
- Uconnect Voice Command with BluetoothSM (Limited only)
- Remote USB port (Limited only)

NORTH ALL-SEASON GROUP

- Heated front seats
- Steering wheel-mounted audio controls
- Leather-wrapped steering wheel
- Remote start system (with automatic only)

PREMIUM SOUND GROUP

- Nine Boston Acoustics speakers with two articulating liftgate speakers
- Leather-wrapped steering wheel with audio controls

SMOKER'S GROUP

- Removable ashtray, cigar lighter

SPECIFICATIONS[§]

	Sport and North	Limited
Curb Weight		
4x2, kg (lb)	3107 (1409) — 2.0L manual	3195 (1499) — 2.4L manual
4x4, kg (lb)	3247 (1382) — 2.4L manual	3350 (1520) — 2.4L manual
Towing (When properly equipped)		
Towing Capacity, max, kg (lb)	907 (2000)	907 (2000)
Exterior		
Wheelbase	2635 (103.7)	2635 (103.7)
Overall Height	1651 (65.0)	1651 (65.0)
Front Track	1520 (59.8)	1520 (59.8)
Rear Track	1520 (59.8)	1520 (59.8)
Overall Width	1812 (71.4)	1812 (71.4)
Overall Length	4448 (175.1)	4448 (175.1)
Ground Clearance/4x4 with Freedom Drive II	206 (8.1)/231 (9.1)	206 (8.1)/231 (9.1)
Interior		
	Front	Rear
Headroom	1033 (40.7)	1013 (39.9)
Legroom	1032 (40.6)	1001 (39.4)
Hip Room	1328 (52.3)	1295 (51.0)
Shoulder Room	1387 (54.6)	1372 (54.0)
Capacities		
	Sport and North	Limited
Cargo, Rear Seat Up, L (cu ft)	643 (22.7)	643 (22.7)
Cargo, Rear Seat Folded, L (cu ft)	1519 (53.6)	1519 (53.6)
Seating Capacity	5	5
Interior Volume, L (cu ft)	3511 (124)	3511 (124)
Fuel Tank, 4x2, L (gal)	51.5 (11.4)	51.5 (11.4)
Fuel Tank, 4x4, L (gal)	51.1 (11.2)	51.1 (11.2)
GVWR		
GVWR, kg (lb)	2011 (4435)	2011 (4435)

[§]All dimensions are in millimetres (inches) unless otherwise noted.

For more information, please call
(800) 361-3700
or visit
jeep.ca



DISCLAIMERS 1) Based on combined highway/city ratings for vehicles marketed as SUVs in Canada. Based on 2013 EnerGuide highway fuel consumption ratings. Government of Canada test methods used. Your actual fuel consumption will vary based on driving habits and other factors. Ask your retailer for EnerGuide information. Excludes other vehicles designed and manufactured by Chrysler Group LLC. 2) Based on 2012 *Ward's* Small Cross/Utility segmentation and MSRP of base models. 3) With Freedom Drive II. Based on 2012 *Ward's* Small Cross/Utility segmentation. Excludes other vehicles designed and manufactured by Chrysler Group LLC. 4) When properly equipped. Based on 2012 *Ward's* Small Cross/Utility segmentation. Excludes other vehicles designed and manufactured by Chrysler Group LLC. 5) Based on 2012 *Ward's* Small Cross/Utility segmentation. Excludes other vehicles designed and manufactured by Chrysler Group LLC. 6) Do not attempt water fording unless depth known to be less than 51 cm (20 inches). Traversing water can cause damage that may not be covered by the new vehicle warranty. Always off-road responsibly in approved areas. 7) Requires SiriusXM™ radio subscriptions governed by SIRIUS terms and conditions available at siriuscanada.ca. 8) No system can repeal the laws of physics or overcome careless driving actions. Performance is limited by available traction, which snow, ice, and other conditions can affect. When the warning lamp flashes, the driver needs to use less throttle and adapt speed and driving behaviour to prevailing road conditions. 9) The advanced front air bags in this vehicle are certified to the federal regulations for advanced air bags. Children 12 years old and younger should always ride buckled up in a rear seat. Infants in rear-facing child restraints should never ride in the front seat of a vehicle with a passenger front air bag. All occupants should always wear their lap and shoulder belts properly. 10) Always sit properly with the head restraint properly adjusted. Never place anything in front of the head restraint. 11) Must use Bluetooth compatible phone. Driving while distracted can result in loss of vehicle control. Only use mobile phones and other devices, even with voice commands, when it is safe to do so. 12) Never program while driving. GPS mapping may not be detailed in all areas or reflect current road regulations. 13) Phone must support Bluetooth Phone Book Access Profile (PBAP). 14) Not compatible with all garage door openers.

ABOUT THIS CATALOGUE Since the time of printing, some of the information you'll find in this catalogue may have been updated. Ask your retailer for details. Some of the equipment shown or described throughout this catalogue is available at extra cost. Specifications, descriptions, illustrative materials, and all competitive comparisons contained herein are as accurate as known at the time this publication was approved for printing. Chrysler Canada Inc. reserves the right to make changes at any time without notice and without incurring obligation. For the price of the model with the equipment you desire, or verification of specifications contained herein, see your Chrysler, Jeep, Dodge, and Ram retailer. Jeep, the Jeep grille, Compass, Freedom Drive I, Freedom Drive II, SENTRY Key, SRT, and Trail Rated are registered trademarks and Uconnect is a trademark of Chrysler Group LLC. Auto/Stick is a trademark of Hurst Performance. Boston Acoustics and the Boston Acoustics logo are registered trademarks of Boston Acoustics, Inc. All rights reserved. Bluetooth is a registered trademark of Bluetooth SIG, Inc. Goodyear is a registered trademark of The Goodyear Tire & Rubber Company. SiriusXM and related marks and logos are trademarks of SiriusXM Radio Inc. Garmin and the Garmin logo are registered trademarks of Garmin, Ltd. or its subsidiaries and are registered in one or more countries. All rights reserved.

SERVICE CONTRACTS Chrysler Service Contracts. Chrysler Canada Inc. has a vested interest in your satisfaction and owner experience with your new vehicle. Chrysler Canada Service Contracts offer extended service and maintenance plans to help ensure you'll enjoy your vehicle for many years down the road — for just pennies a day. For more information on comprehensive vehicle coverage, see your local Chrysler, Jeep, Dodge, and Ram retailer, call (800) 465-2001, or visit chryslercanada.ca/owners.

WARRANTIES 2013 Chrysler, Jeep, Dodge and Ram vehicles are backed by a 5-year or 100,000-kilometre fully transferable Powertrain Limited Warranty* with \$0 deductible plus 24-hour roadside assistance. *SRT vehicles are backed by a 3-year or 60,000-kilometre fully transferable Powertrain Limited Warranty* with \$0 deductible plus 24-hour roadside assistance. Basic Warranty coverage is for 3 years or 60,000 kilometres.* Rust-through coverage on all body sheet metal is for 3 years. The Cummins Turbo Diesel engine is protected by a separate Limited Warranty, covering the engine for 5 years or 160,000 kilometres.*

*Whichever comes first. Some conditions may apply. †The 5-Year/100,000-Kilometre Powertrain Limited Warranty does not apply to vehicles sold for certain commercial uses. See your retailer for full details.

Jeep is a registered trademark of Chrysler Group LLC.

52013C573E



Mixed Sources
Product group from well-managed
forests, controlled sources and
recycled wood or fiber
www.fsc.org Cert no. XXX-XXX-000
© 1996 Forest Stewardship Council