



Jeep

2011
Wrangler



Capably conquers legendary terrain.* All-New Interior with Soft-Touch Surfaces Sunrider® Soft Top Rock-Trac® 4WD Transfer Case Best-in-Class Ground Clearance 3.8L SMPI V6 Engine Open-Air Freedom Power Heated Mirrors Tru-Lok® Front and Rear Locking Differentials Electronically Disconnecting Front Sway Bar System Best-in-Class Crawl Ratio⁽¹⁾ 3-Piece Freedom Top® Hardtop Electronic Stability Control (ESC)⁽²⁾ Removable Full Doors^{(3)★} Antilock Brake System (ABS) Best-in-Class Approach Angle⁽¹⁾ Robust Tow Hooks Halogen Fog Lamps Leather-Trimmed Seats Heated Front-Row Seats Remote Keyless Entry Skid Plates Hill Start Assist (HSA)⁽²⁾ Best-in-Class Turning Diameter⁽¹⁾ High-Pressure Monotube Shocks with Tunable Valves Uconnect® Media Center with Garmin® Navigation 7-Speaker ∞Infinity® Sound System Best-in-Class Breakover Angle⁽¹⁾ Sentry Key® Antitheft Engine Immobilizer Reversible Load-Floor Mat All-Speed Traction Control SIRIUS® Satellite Radio⁽⁴⁾ Rock Rails Dana® 44 Front Axle Washable Interior Best-in-Class Departure Angle⁽¹⁾



*Standard and available equipment shown. A note about this brochure: All disclaimers and disclosures can be found on inside back cover. **Be sure to follow all instructions in Owner's Manual for removal of top, doors, and lowering of windshield. Driving with doors off and windshield down is for off-road use only.



Adventurously civilized. For a serious exploration of worldly wilds, the legendary capability of the 2011 Jeep® Wrangler expands your room with a view. Its updated cabin adds refined touches, yet remains true to its Trail Rated® soul. In other words, all guts and more glory tell the tale of this icon — a legendary story of adventure for nearly 70 years.

FIRST-CLASS UPGRADE. Chrome details and available leather-trimmed seats are embedded into Wrangler's new soft-touch interior. Available heated power mirrors and heated front-row seats raise your level of comfort in cool temps. And an all-new steering wheel places speed control, audio, and available Electronic Vehicle Information Center (EVIC) control settings at your fingertips.

HERITAGE WORTH HOLDING ONTO. Among the rugged interior details, Wrangler's dash-mounted grab bar incorporates stainless steel bolts and an authentic Jeep stamp paying homage to nearly 70 years of purpose-built durability.





The recognized standard for proven off-road capability. Jeep® Wrangler is the Trail Rated® original, fortified with components that give you the freedom to go anywhere and do anything. Whether your quest for adventure takes you up and over the red rocks of Moab, thrusts you into 15-inches of rushing river,⁽⁵⁾ or sends you out onto roads buried in fresh snow, Wrangler's Trail Rated mantra of unmatched capability holds true for all who take the wheel. Get in, grab on, and go.



WATER-READY. Face that riverbed with confidence. A Trail Rated Jeep vehicle features additional electrical and body sealing, along with a high air intake for optimum water fording[®] capability.



OFF-ROAD TUNED BRAKING. An antilock brake system (ABS) with a 4WD calibration helps to offer welcome control on unimproved surfaces — like mud, sand, and gravel.



TRACTION. Trail Rated traction helps you always remain in control on untamed terrain, slippery conditions (wet, mud, snow), and on steep mountain-like grades.

COMMAND-TRAC.[®] A Command-Trac transfer case is smooth and quiet, yet tough and beefy, so you can tackle challenging terrain with confidence. (Standard on Sahara and Sport models.)



EXTREME OPEN-AIR DRIVING. Wrangler takes open-air driving to a new level with standard removable full-framed doors and fold-down windshield.^{(9)*}

SOUND BAR WITH INTEGRATED SPEAKERS. An exclusive overhead sound bar turns it up with a pair of weather-resistant, mid-range, 6.5-inch speakers.

POWER CONVENIENCE GROUP. Power windows and door locks; remote keyless entry; power, heated mirrors; and a security alarm are available with the removable full-framed doors.

TAKE MORE GEAR. Behind the rear seats you'll find plenty of cargo room, now with a reversible cargo mat and an in-floor storage bin with lift-out tray, including storage for door and hardtop bolts.

HEATED FRONT SEATS. Upgrade your all-weather or top-down experience with heated leather-trimmed or cloth front-row seats, including in-dash controls.

SOFT TOP, HARDTOP, OR DUAL TOP. The unique, open-air design intensifies the off-road, outdoor experience. No other 4x4 comes close to offering as many top configurations as Wrangler provides standard.



TRU-LOK® LOCKING DIFFERENTIALS. Front and rear electronic-locking differentials balance speed between left and right wheels, maintaining forward momentum for the ultimate in traction. An instrument panel-mounted rocker switch can lock either the rear or both axles (standard only on Rubicon).

ROCK RAILS. Extra-tough body-mounted rails provide additional protection (standard only on Rubicon).

ROCK-TRAC® TRANSFER CASE. A 4:1 low-gear ratio allows Wrangler Rubicon to crawl at a low speed for greater control and increases the amount of torque available at the wheels (standard only on Rubicon).

SKID PLATES. Stamped steel skid plates for fuel tank, transfer case, and automatic transmission oil pan, if equipped, help protect Wrangler's guts when battling boulders.

FRONT SWAY BAR DISCONNECT SYSTEM. Flip a switch and the sway bar disengages when driving under 18 mph in 4WD-low (4LO) mode. This allows the front suspension to travel up to 25 percent farther on Wrangler Rubicon than Sport and Sahara models (standard only on Rubicon). See Ramp Travel Index in Specifications.

BODY-ON-FRAME DESIGN. Built with a frame that's fully boxed for strength, stiffness, and durability.



Properly secure all cargo.



NEW HEATED POWER EXTERIOR MIRRORS. Melt snow and ice off your sideview mirrors as you warm up your interior. This available feature helps to keep your mirrors icicle-free as you drive, as well.

ELECTRONIC THROTTLE CONTROL (ETC) SYSTEM. Helps to prevent the "pedal bobble" that often occurs when in 4WD-low (4LO) mode. ETC's special off-road calibrations help the driver to "feather in" the throttle over uneven terrain, logs, and rocks.

KEEP STEERING ON COURSE. Wrangler features a steering linkage and a recirculating-ball steering gear. Its robust, cross-link geometry helps provide one of the stiffest possible linkage systems in a solid-axle platform for steering precision and Best-in-Class turning diameter.⁽¹⁾

TORQUE TO TOW. Wrangler Unlimited can confidently tow up to 3,500 lb when properly equipped with the factory-installed Trailer Tow Group.

BEST-IN-CLASS GROUND CLEARANCE.⁽¹⁾ Wrangler Rubicon runs over the competition with over 10 inches of ground clearance, helped, in part, by its standard 32-inch BFGoodrich® off-road tires.

DANA® 44 HEAVY-DUTY SOLID AXLES. Durability comes from heavy shafts, stiff housings, large pinion bearings, and above-center pinion mountings for smoother, quieter operation. (Rear Dana 44 standard on all models. Front Dana 44 standard only on Rubicon.)

TWO-PIECE STRUCTURAL OIL PAN. A two-piece oil pan provides a steel lower portion for impact resistance with an upper aluminum section for improved weight savings.

HEAVY-DUTY SUSPENSION. Solid axles with locating arms, coil springs, track/stabilizer bars, front steering damper, and tunable monotube shock absorbers are firm at low speeds and more relaxed at higher speeds (Standard on Sahara. A performance suspension is standard on Rubicon).



*Be sure to follow all instructions in Owner's Manual for removal of top, doors, and lowering of windshield. Driving with doors off and windshield down is for off-road use only.



There's no place the sun doesn't shine. Choose any Jeep® Wrangler, crank up the stereo, pop the top, and experience wind-at-your-back freedom. Be the first in your neck of the woods to get the streamlined look of the new body-color hardtop available on Sahara models. Full-framed and available half-framed removable doors offer even more open-air freedom on Sport and Rubicon models.^{(3)★}

*Be sure to follow all instructions in Owner's Manual for removal of top, doors, and lowering of windshield. Driving with doors off and windshield down is for off-road use only.



SUNRIDER® SOFT TOP. The standard Sunrider Soft Top features a convenient cable release that quickly lets the sun shine in without having to fold back the entire top. It also completely folds down and tucks away. Sunrider is made of a three-ply fabric that helps deflect road sounds, absorb wind noise, and enhance overall insulation.

FREEDOM TOP® HARDTOP. This available three-piece modular hardtop allows sun-exposure control by separating into three easy-to-store pieces.

NEW BODY-COLOR HARDTOP. Give more hue and substantial style to your Sahara with this new option.





ADVANCED MULTISTAGE FRONT AIR BAGS.[®] These air bags provide nearly instantaneous occupant protection by matching air bag output to crash severity.

AVAILABLE SUPPLEMENTAL FRONT SEAT-MOUNTED SIDE AIR BAGS.[®] These deploy from the outboard side of each front seat to enhance protection of the driver and front passenger in certain impacts. Each side air bag has its own sensor to autonomously trigger the air bag on the side where the impact occurs.

HALOGEN HEADLAMPS AND FOG LAMPS. These bright sources of light improve down-road visibility at night or during inclement weather.

ELECTRONIC STABILITY CONTROL (ESC).[®] An advanced system designed to assist drivers in maintaining control of their vehicle at all times. It utilizes hydraulic Brake Assist, traction control, Electronic Roll Mitigation (ERM), and available Trailer Sway Control (TSC) to constantly monitor driver input against the vehicle's actual course. If needed, ESC automatically brakes and/or reduces engine torque. Meanwhile, ERM estimates the potential for wheel lift, reducing engine power and applying brakes if needed. TSC, packaged with the Trailer Tow Group, detects "sway" unique to trailering and engages the brakes to slow the vehicle and increases brake force to one side of the vehicle to help counteract the sway from the trailer. ESC has three modes: Full-On, Partial-On which shuts off traction control, and Full-Off which is ideal for off-road driving.

Wrangler's got your back, your sides, as well as your front end. Just as Wranglers are purpose-built for fun, they're also infused with advanced active and passive systems designed to help keep you safe and secure. At the forefront are the standard advanced multistage front air bags.⁽⁶⁾ Choose the supplemental front seat-mounted side air bags⁽⁶⁾ for additional safety measures that are there when you need them. These deploy from the outboard side of each front seat, enhancing protection for the driver and front passenger in certain impacts.



Safety and Security Features



HILL START ASSIST (HSA) AND HILL DESCENT CONTROL (HDC).[®] HSA works to prevent Wrangler from rolling away when starting the vehicle on an up- or downhill gradient. It holds the vehicle stationary for two seconds after the driver's foot is removed from the brake pedal, allowing time to apply the throttle. HDC is packaged with the available 4-speed automatic transmission and diligently works to help Wrangler navigate steep declines at a steady and consistent speed.

SPORT BAR. Uses high-strength steel and is integrated into the B-Pillar that runs into the floor, helping to improve side-impact performance and vehicle stiffness.

ENERGY-ABSORBING FRONT RAIL EXTENSIONS. Sometimes nature says "hello" with a bit too much enthusiasm. Wrangler's collapsible, hydro-formed front rail tips offer low-speed protection and can be serviced after impact events of up to 8 mph.



Stay connected to the people, music, and devices that matter most. Uconnect® is an intuitive hub for all your media — cell phone, Internet, satellite radio, navigation system, MP3 player, and smartphone — designed to make your life easier, wherever you roam.



PHONE. Talking on the phone while driving has never been easier — or more responsible. Uconnect Phone is the in-vehicle voice-activated communication system that allows you to talk on your Bluetooth® compatible phone virtually hands-free. This clever system is also smart enough to synchronize with your Bluetooth compatible phone's address book[™] — up to 1,000 entries — every time you get into your vehicle.



WEB. Put the power of high-speed Internet in your vehicle with Uconnect Web.[™] Effortlessly connect any WiFi enabled device to the Internet at 3G broadband speeds making your vehicle a mobile Hotspot. Passengers can use multiple devices at the same time. There's no need for cell cards or software with this unique Authentic Accessory by Mopar — it's all wireless. Subscription required. Sold separately.



VOICE COMMAND. It simplifies driving by letting you keep your eyes on the road and your hands on the wheel. Vocally select FM radio stations or SIRIUS[®] Satellite Radio[®] channels. Make and receive calls. Select navigation destinations, and record voice memos. This smart system technology can also be trained to better recognize your voice and can understand commands in English, French, and Spanish.



ENTERTAINMENT. Manage all of your media. You'll have several ways to access audio. Get the sound going via CDs/DVDs, MP3s, remote USB port, audio jack, hard disc storage, Voice Command, SIRIUS Satellite Radio[®] (your first year of service is included), and Bluetooth streaming audio.



NAVIGATION. Provides enhanced GPS navigation and destination entry via voice command and SIRIUS Traffic[™] for real-time traffic information on the go. It can also locate nearby restaurants, shopping, hospitals, or points of local interest. Includes accident alerts, road closings, and traffic flow. Your first year of SIRIUS Traffic service is included.



SIRIUS TRAVEL LINK.[™] Access a wealth of information at your fingertips, including national and local weather reports, local gas prices, in-game and final sports scores, weekly movie times, even local ski slope conditions. Subscription is required after one-year complimentary service (late availability).



GARMIN[®] NAV.[™] Offered for the first time is a media center that includes Garmin, the most recognized name in GPS wayfinding. It features Garmin's intuitive user interface and navigation with lane guidance, bringing the popular handheld experience to a factory in-dash screen.

Jeep® Wrangler Rubicon and Unlimited Rubicon.

With this ready-to-go warrior, willing adventurers own the rights to conquering the mighty Rubicon Trail, right out of the box. Wrangler Rubicon is born with Tru-Lok® electronically locking differentials, huge tires, skid plates, and the legendary Rock-Trac® transfer case that delivers a 4:1 low range for great off-road capability. An incredible 73.1:1 crawl ratio with the manual transmission allows for a controlled 0.5 mph cruise up the rocks. Flip a switch to disengage the standard front sway bar when driving under 18 mph in 4WD-low (4LO) mode for maximum suspension articulation.

**BEST-IN-CLASS APPROACH
AND DEPARTURE ANGLES⁽¹⁾**

**BEST-IN-CLASS
GROUND CLEARANCE⁽¹⁾**

**BEST-IN-CLASS
MANEUVERABILITY⁽¹⁾**



NEW DOOR STORAGE. Keep important items like your phone and MP3 devices within reach.

GREAT GRIP. Rubicon's muscular capability grabs you with standard 32-inch BFGoodrich® Mud Terrain Tires and 17-inch cast aluminum wheels.

WRANGLER RUBICON. MADE FOR MOUNTAINS. STANDARD: 3.8L V6 SMPI engine with 6-speed manual transmission, Rock-Trac® 4WD system, Tru-Lok® front/rear locking differentials, front sway bar disconnect system, Dana® 44 heavy-duty front and rear axles, high-pressure monotube shocks with low-speed tunable valve technology, heavy-duty suspension, fog lamps, tow hooks, skid plates, Hill Start Assist (HSA),® Electronic Stability Control (ESC),® Electronic Roll Mitigation (ERM), 17-inch cast

aluminum wheels with 32-inch BFGoodrich Mud Terrain tires, Media Center 130 radio, seven ∞Infinity® speakers including subwoofer and 368-watt amplifier, SIRIUS® Satellite Radio,® rock rails, leather-wrapped steering wheel with speed/audio/available EVIC controls, lockable center console, advanced multistage front air bags.® AVAILABLE: Premium leather-trimmed seats, Uconnect® Voice Command, supplemental front-seat mounted side air bags,® Uconnect Web® (Mopar option).



Properly secure all cargo.



Jeep® Wrangler Sahara and Sahara Unlimited. Available body-color hardtop, body-color fender flares, and Black front and rear fascias with Silver accents give Sahara a profile that's hard to ignore. Sahara's textured side steps look tough and divert air flow to help improve aerodynamics. When you want to tune in, the standard ∞Infinity® seven-speaker sound system with SIRIUS® Satellite Radio⁽⁴⁾ does the trick.

WRANGLER SAHARA. THE IDEAL BLEND OF CAPABILITY AND COMFORT. STANDARD: Includes Command-Trac® 4WD system, Dana® front and rear axles, advanced multistage driver and front-passenger air bags®, antilock brake system (ABS), Electronic Stability Control (ESC),[®] Hill Start Assist (HSA)[®] and Electronic Roll Mitigation (ERM), Sentry Key® antitheft engine immobilizer, tubular side steps, skid plates, halogen headlamps and fog lamps, Sunrider® Soft Top, 18-inch cast aluminum wheels, Media Center 130 radio, seven ∞Infinity® speakers including subwoofer and 368-watt amplifier, SIRIUS® Satellite Radio[®] with one-year subscription included, monotone or two-tone cloth seats, soft-touch instrument panel, leather-wrapped steering wheel with speed/audio/available EVIC controls, lockable center console, tip-and-slide driver and front-passenger seats (on 2-door models). AVAILABLE: Trac-Lok® limited-slip rear differentials, Trailer Tow Group, premium leather-trimmed seats, Uconnect® Voice Command, supplemental front seat-mounted side air bags®, Hill Descent Control (automatic transmission), Uconnect Web[®] (Mopar option).



LEATHER TRIM IS HOT. SO ARE HEATED SEATS. Once you've enjoyed the quick warmth of Wrangler's available heated driver and front-passenger seats, it's doubtful you'll ever go back.

MORE TO STORE. Lock your valuables in the new, larger center console storage bin. Feeling secure means you can enjoy even more top-down freedom.



CONTROL FREAK. Cabin temperature control is no longer a matter of constant adjustment. The available automatic temperature control takes over and maintains your desired level of comfort. And when you need fresh air, pick a window, push a button, and let the breeze flow in from any direction.



Jeep® Wrangler Sport and Sport Unlimited. You're handed the torque to get up and over with a powerful 3.8L V6 engine and the confidence to know Wrangler Sport's standard Command-Trac® 4WD will go virtually anywhere you direct it. Sport Unlimited's five-link coil suspension adds cushion to this tough-rider's roll, wherever you may roam. Sport's interior adds the flexibility to plug and play your own MP3 tunes via the auxiliary input jack.



CLOTH SEATS. Wrangler's new seat coverings are boldly attractive, as well as ruggedly durable. A four-way position adjuster is standard on the driver's seat.

FEAR NO MUD, DIRT, OR SPILLS. Have some good, clean fun. A washable interior with drain plugs is standard on all Wrangler models.

HEIGHT-ADJUSTABLE DRIVER'S SEAT. The driver's seat includes a pump handle that can raise the seat nearly two inches.



WRANGLER SPORT. THE TRAILHEAD OF THE JEEP EXPERIENCE. STANDARD: Includes advanced multistage driver and front-passenger air bags,[®] antilock brake system (ABS),[®] Electronic Stability Control (ESC),[®] Hill Start Assist (HSA), Electronic Roll Mitigation (ERM), Sentry Key[®] anti-theft engine immobilizer, removable full-frame doors,^{®*} skid plates, halogen headlamps and fog lamps, tow hooks, Sunrider[®] Soft Top, Media Center 130 radio with AM/FM/CD player and auxiliary input jack. AVAILABLE: Freedom Top[®] hardtop, 4-speed automatic transmission, SIRIUS[®] Satellite Radio[®] with one-year subscription included, Trailer Tow Group, Chrome Edition Group (Mopar option).



*Be sure to follow all instructions in Owner's Manual for removal of top, doors, and lowering of windshield. Driving with doors off and windshield down is for off-road use only.

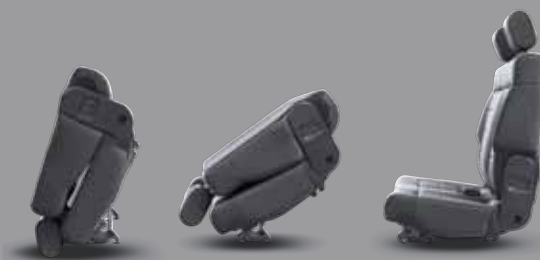


All-around open-air freedom. Jeep[®] Wrangler is a true original, taking away the boundaries between you and the great outdoors. Remove the doors,^{(3)*} fold down the windshield, open the Sunrider[®] Soft Top, and feel the rush of the wind in your hair. See the world from a point of view that others only dream of, living authentically behind the wheel of a legendary Jeep Wrangler.



SOUND POSSIBILITIES. Radios with MP3 audio input jacks and six-speaker audio system are standard. There are two tweeters and four 6.5-inch speakers (two in the overhead sound bar). Available is a premium sound system that includes six ∞Infinity[™] speakers and an 8-inch subwoofer with a 368-watt amplifier.

REAR CARGO MAT AND STORAGE BIN. A new reversible cargo mat protects your carpet, while a redesigned storage bin beneath Wrangler's rear floor helps keep valuables secure and features a new lift-out tray with convenient storage for door and hardtop bolts.



STANDARD FOLD AND TUMBLE REAR BENCH SEAT. Make more room for people, cargo, or pets. Easy to rearrange, these seats easily tumble forward and are found on all Wrangler two-door models. Wrangler four-door models come standard with a split-folding rear seat.

DETAILED PRIDE. Jeep Wrangler is finely wrought with design details that are thoughtfully placed and carefully crafted. Satin Silver-trimmed heating and cooling vents allow precise placement of airflow.



*Be sure to follow all instructions in Owner's Manual for removal of top, doors, and lowering of windshield. Driving with doors off and windshield down is for off-road use only.



Always authentic, forever an icon. When your Wrangler is outfitted with Authentic Jeep® Accessories by Mopar, its legendary profile gains even greater appeal. All Mopar products are specifically designed to enhance your vehicle, sculpting it into a creation of impressive taste and unique flair. As the official original parts and accessories division of Chrysler Group LLC, Mopar parts are manufactured with the same uncompromising standards as your Jeep Wrangler. For the full line of Authentic Jeep Accessories by Mopar, visit mopar.com.

AUTHENTIC JEEP® ACCESSORIES 

READY TO ROCK. Jeep® Wrangler Rubicon Unlimited shown in Mango Tango Pearl outfitted with Authentic Jeep Accessories by Mopar, including 17-inch Black Painted Cast-Aluminum Wheel, Fender Flares, Element™ Doors, Lift Kit, Off-Road Bumpers, Rock Rails, WARN® Winch, Windshield-Mounted Off-Road Lights, Chrome Grille and the Extreme Trail Edition Camper (camper shown with optional wheels).



TRAIL EDITION CAMPERS. Embrace the trails with Mopar's first off-road Camper Trailers, engineered for Jeep capability. Lightweight all-aluminum construction incorporates Jeep vehicle rugged design cues, including Rubicon 17-inch cast-aluminum wheels, 32-inch Mud Terrain tires, 12 inches of ground clearance, trailing-arm suspension, aluminum cover, and optional 360-degree axis pintle hitch. Unfolds to 76 inches of headroom, featuring a queen-size bed, fold-down sofa, table, cabinet, and 110-volt power supply. Hard-core off-road enthusiasts can up the ante with the **Extreme Trail Edition Camper** and its heavier frame, 35-inch tires, 15 inches of ground clearance and full-underbody skid plate.

Katzkin Leather Interiors



Cab Cover



Mopar offers a full line of sun bonnets, windscreens, and tonneau covers.



Taillamp Guards and Corner Guards



Tubular Bumpers



Slush Mats

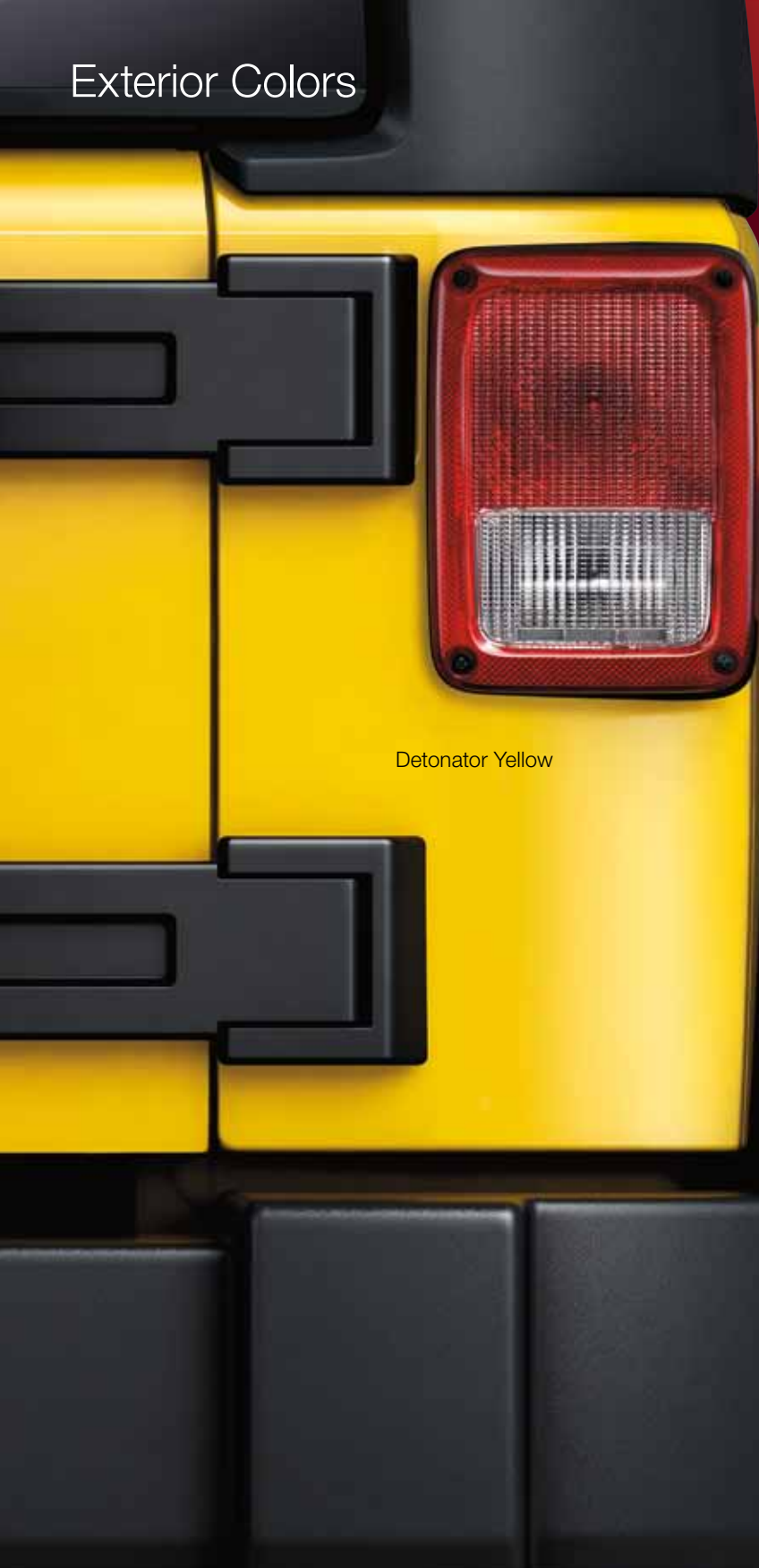


Mirror Relocation Bracket



Spare Tire-Mounted Bike Carrier





Exterior Colors

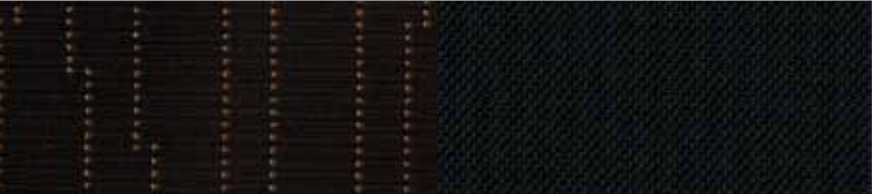
Flame Red
Deep Cherry Red Crystal Pearl
Bright Silver Metallic
Cosmos Blue
Mango Tango Pearl
Bright White
Sahara Tan
Natural Green Pearl
Black



TECTONIC CLOTH/WALLACE II CLOTH



Black Cloth Seats include a Black monotone interior (Standard on all models).



Dark Saddle/Black Cloth two-tone Seats include a two-tone Black/Dark Saddle interior (Available on Rubicon, Rubicon Unlimited, Sahara, and Sahara Unlimited)



Interior Trim

MCKINLEY LEATHER TRIM



Dark Saddle Leather Trim Seats include a two-tone Black/Dark Saddle interior (Available on Rubicon, Rubicon Unlimited, Sahara, and Sahara Unlimited)





SUNRIDER® SOFT TOP. Utilizes a special three-ply material that is quiet, watertight, and easy to fold and tuck away. Standard on all Wrangler models is the exclusive Sunrider Soft Top in Black.

FREEDOM TOP® HARDTOP. Strong and secure hardtop offers solid protection from the elements and helps quiet your ride. Enjoy the best of both hardtop and soft top worlds when you choose the Dual-Top Group. (Available on Wrangler and Wrangler Unlimited in Black.)

NEW! AVAILABLE COLOR-KEYED FREEDOM TOP HARDTOP. Now you can match the color of your hardtop to the body color of your Sahara or Sahara Unlimited.

All tops are also offered as Authentic Jeep, Accessories by Mopar.



FULL-FRAMED DOORS. Removable,^{®*} with roll-up windows and available power windows and door locks. Map pockets with mesh net to ensure wash-out capability. Aluminum-forged hinges are used on both Wrangler and Wrangler Unlimited. (Standard on all models.)



HALF-FRAMED DOORS. Removable^{®*} and feature manual locks. You can remove the doors completely for the ultimate in open-air freedom. (Available on Sport and Rubicon models.)



HALF DOOR KITS BY MOPAR improve your view, while offering security and protection. Kit includes one pair of lower half doors that are E-coated and ready to paint. Upper half doors are also available by Mopar.

*Be sure to follow all instructions in Owner's Manual for removal of top, doors, and lowering of windshield. Driving with doors off and windshield down is for off-road use only.

16-inch Slot Spoke Styled Steel Painted Argent

(Standard on Sport, Unlimited Sport, and Unlimited Right-Hand Drive)

17-inch Moab Cast Aluminum Painted Sparkle Silver

(Available on Sport and Unlimited Sport)

18-inch Gladiator Cast Aluminum Painted Satin Silver

(Standard on Sahara and Unlimited Sahara)

17-inch Moab Cast Aluminum Painted Satin Carbon

(Standard on Rubicon and Unlimited Rubicon)



POWERTRAIN

Engine _____	3.8L SMPI V6
Displacement (cu in) _____	230.5
Horsepower (DIN @ rpm) _____	202 @ 5,000
Torque (SAE net lb-ft @ rpm) _____	237 @ 4,000
Axle Ratio (:1)	
6-speed manual _____	3.21 Std., 3.73 Opt., 4.10 Std. — Rubicon
4-speed automatic _____	3.73 Std., 4.10 Std. — Rubicon
Fuel System ____	Sequential multipoint, electronic fuel injection
Transmission	
6-speed manual with overdrive, synchronized in all gears, multirail shift system with top-mounted shift lever ____	Std.
4-speed automatic with overdrive clutch hydraulic actuation, dual-mass flywheel system, Hill Descent Control [®] electronically controlled converter clutch ____	Opt.
(Std. on right-hand-drive models)	
Overall Top Gear (:1) _____	2.69 Std., 3.44 Std. — Rubicon

ELECTRICAL SYSTEM

Alternator _____	140 ampere
Battery _____	600 CCA, maintenance-free
Fan _____	On-demand, 2-speed electric with thermally activated circuit breaker

FOUR-WHEEL-DRIVE SYSTEM (transfer case)

NV241 Gll Command-Trac [®] (includes off-road skid plate), part-time, 2-speed, with shift-on-the-fly, 2.72:1 low-gear ratio _____	Std. — All 4x4 models, except Rubicon
NV241 OR Rock-Trac [®] (includes off-road skid plate), part-time, 2-speed, with shift-on-the-fly, 4.0:1 low-gear ratio _____	Std. — Rubicon

GEAR RATIO/CRAWL RATIO

(manual transmission, standard axle ratio)

Model	First Gear Ratio	Transfer Case (4LO)	Axle Ratio	Crawl Ratio
Rubicon	4.46	4.00	4.10	73.1
Unlimited Rubicon	4.46	4.00	4.10	73.1
Sahara	4.46	2.72	3.21	38.9
Unlimited Sahara	4.46	2.72	3.21	38.9
Sport	4.46	2.72	3.21	38.9
Unlimited Sport	4.46	2.72	3.21	38.9

*Be sure to follow all instructions in Owner's Manual for trailer towing. For specific details, discuss your plans with your Jeep® dealer, who will help you select the right equipment to meet your specifications.

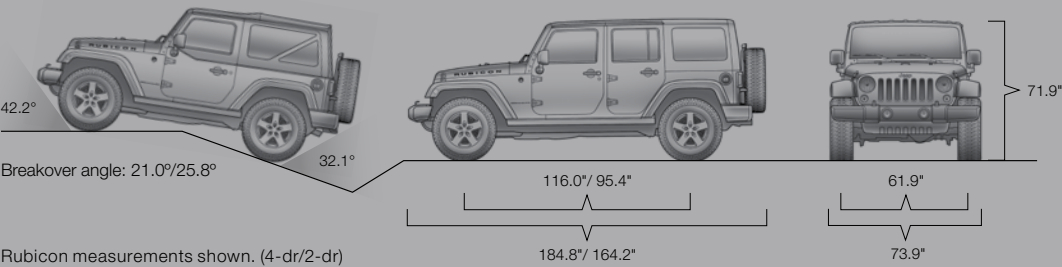
CAPACITIES/WEIGHTS/TOWING (4WD)[™]

(pounds unless otherwise specified)

Fuel Tank (includes off-road skid plate) (gal)	
2-door/4-door _____	18.6/22.5
Base Curb Weight 2-door, 4WD _____	3,849
4-door, 4WD _____	4,231
Payload Capacity (all occupants and cargo) _____	1,000
Maximum Gross Vehicle Weight Rating (when properly equipped)	
2-door/4-door _____	5,000/5,500
Maximum Towing Capacity (when properly equipped)	
2-door/4-door _____	Std. — 1,000
2-door with Trailer Tow Group/4-door with Trailer Tow Group _____	Opt. — 2,000/3,500
Tongue Load Limit _____	350

BODY/SUSPENSION/CHASSIS

Body Design: Boxed steel frame with crushable, hydroformed front rail tips	
Suspension: Live solid axles, 5-link front/rear, coil springs, leading arms, track/stabilizer bars and front steering damper	
Front Sway Bar Disconnect System _____	Std. — Rubicon
Steering Type _____	Power, recirculating ball with damper
Overall Ratio 2-door/4-door _____	16.7:1/ 14.7:1
Turns (lock-to-lock) 2-door/4-door _____	3.5/3.1
Turning Diameter (curb-to-curb, with P225/75R16 tires) (ft)	
2-door/4-door _____	34.3/ 40.1
Brake System: 4-wheel disc hydraulic, power-assisted, 11.9" vented front/12.4" solid rear	
Electronic Stability Control [™] : 4-wheel disc antilock, with on- and off-road calibrations, 4-channel, active wheel-speed, vehicle-speed, steering-wheel-angle, yaw-rate and lateral-acceleration sensors, vehicle stability management with 3-stage activation switch, all-speed traction control, Brake Assist, Electronic Roll Mitigation and Electronic Brake Distribution	
Hill Start Assist _____	Std



Rubicon measurements shown. (4-dr/2-dr)

Specifications

INTERIOR DIMENSIONS (inches unless otherwise specified)

Seating Capacity 2-door front/rear, 4-door front/rear	2/2, 2/3
Head Room front _____	42.1
rear _____	40.8
Leg Room front _____	40.9
rear, 2-door/4-door _____	34.7/36.1
Shoulder Room front _____	55.8
rear, 2-door/4-door _____	59.6/55.8
Hip Room front _____	53.2
rear, 2-door/4-door _____	43.3/54.1
Front-Seat Travel _____	9.4
Front-Seat Volume Index (cubic feet) (min.) _____	55.6
Rear-Seat Volume Index (cubic feet), 2-door/4-door _____	44.2/48.6
Cargo Volume (cubic feet)	
rear seat folded, 2-door/4-door _____	55.0/70.6
behind rear seat 2-door/4-door _____	12.8/31.5
Cargo Liftover Height 2-door/4-door _____	28.7/28.5

RAMP TRAVEL INDEX (RTI) (20-degree ramp)

Rubicon (sway bar connected/disconnected) _____	638/822
Unlimited Rubicon (sway bar connected/disconnected) ____	484/644

EXTERIOR DIMENSIONS (inches unless otherwise specified)

Wheelbase 2-door/4-door _____	95.4/116.0
Overall Length 2-door/4-door _____	164.2/184.8
Overall Width 2-door/4-door _____	73.9/73.9
Track front/rear _____	61.9/61.9
Height 2-door/4-door _____	71.9/71.9
Ground Clearance (at curb weight) (Rubicon) _____	10.0
Approach Angle 2-door/4-door (Rubicon) _____	42.2°/42.1°
Departure Angle 2-door/4-door (Rubicon) _____	32.1°/32.1°
Breakover Angle 2-door/4-door (Rubicon) _____	25.8°/21.0°



TRIPCAST™ by the Jeep brand is a free and easy way to track the progress of your trips and post photos, videos, audio clips, and notes from the road to share with friends in real time. It automatically maps your trail using your iPhone® GPS capabilities. Link TripCast to your Facebook or Twitter account to post trip updates. Includes Points of Adventure, a database of over 250,000 activity spots, including parks, bike paths, camping areas, ski resorts, and more.

Jeep JAMBOREES. Jeep® Jamboree USA offers off-road adventure weekends that bring together the outdoors, down-to-earth people and their Jeep 4WD vehicles. We invite you to explore America's remote backcountry, where great friendships and memories are made. jeep.com/jamboree



The Jeep Life

JOIN IN. Join fellow enthusiasts and tell your story by posting comments, participating in discussions, and sharing your photos and videos. Join our community on Facebook™ (facebook.com/Jeep), follow us on Twitter (twitter.com/Jeep), and check us out on YouTube (youtube.com/TheJeepChannel). The community is gathering online.

Jeep Gear GEAR UP. Explore an extensive line for the Jeep enthusiast. From authentic wearables to unique gifts, all items are as rugged and durable as your Jeep vehicle. jeep.com/gear



WARRANTIES. Jeep vehicles are covered by a 3-Year or 36,000-Mile Basic Limited Warranty (excludes normal maintenance and wear items), as well as a 5-Year or 100,000-Mile Powertrain Limited Warranty that is fully transferable and includes towing to an authorized dealer. Ask your dealer for details and a copy of these limited warranties.

**5 YEAR/100,000 MILE
POWERTRAIN WARRANTY**

	Wrangler				Wrangler Unlimited				
	Sport	Sahara	Rubicon		Sport	Sahara	RHD	Rubicon	
CAPABILITY	B	S	G	R	C	S	G	U	R
Axle Next Generation Dana® 44 heavy-duty solid rear	•	•	•	•	•	•	•	•	•
Next Generation Dana 30 solid front	•	•	•	•	•	•	•	•	•
Next Generation Dana 44 heavy-duty solid front				•					•
Axle Ratio 3.21:1 (requires manual transmission)	•	•	•		•	•	•		
3.73:1 (included with Trailer Tow Group, 6-speed manual transmission or 4-speed automatic transmission)	O	P	O	P	O	P	O	P	•
4.10:1				•					•
Differentials Trac-Lok® limited-slip rear		O	O		O	O	O	O	O
Tru-Lok® front and rear, electronic remote locking				•					•
Four-Wheel-Drive System Command-Trac® NV241 GII, manual, part-time, shift-on-the-fly transfer case	•	•	•		•	•	•	•	•
Rock-Trac® NV241 OR, manual, part-time, shift-on-the-fly transfer case; 4:1 low-gear ratio				•					•
Powertrain 3.8L V6 SMPI engine with 6-speed manual transmission	•	•	•	•	•	•	•	•	•
3.8L V6 SMPI engine with 4-speed automatic transmission	O	O	O	O	O	O	O	O	O
Rock Rails Black, painted steel, heavy-duty, protective, body-mounted				•					•
Skid Plates Protective; fuel tank (2.5-mm), transfer case (3.5-mm), 4-speed automatic transmission (4-mm) (if equipped)	•	•	•	•	•	•	•	•	•
Sway Bar Disconnect Electronically controlled, front (if equipped)				•					•
Tow Hooks 2 front, 1 rear	•	•	•	•	•	•	•	•	•
Trailer Tow Group Includes Class II receiver hitch, 4-pin adapter, Trailer Sway Control, and 3.73:1 axle ratio. (Class I receiver hitch on 2-door models)		O	O	O	O	O	O	O	O
EXTERIOR									
Air Dam Removable, front	•	•	•	•	•	•	•	•	•
Doors Removable, half-framed metal with plastic windows (requires soft top, not available with power windows/doors)		O		O	O	O		O	
Removable, full-framed metal with actuating glass windows	•	•	•	•	•	•	•	•	•

CHRYSLER SERVICE CONTRACTS. Chrysler Group LLC has a vested interest in your satisfaction and overall owner experience. Chrysler Group Service Contracts offer extended service plans to help ensure you'll enjoy the adventure of Jeep life many years down the road. For details, see your Jeep dealer, call (800) 442-2666 or visit jeep.com/csc.

**Service
Contracts**

	Wrangler				Wrangler Unlimited				
	Sport		Sahara	Rubicon	Sport		Sahara	RHD	Rubicon
EXTERIOR cont.	B	S	G	R	C	S	G	U	R
Fender Flares Black, molded-in-color	•	•	•	•	•	•	•	•	•
Body-color			•				•		
Glass Deep-tinted sunscreen rear and quarter	O	•	O		•	•		•	
Grille Body-color, painted, stone- and dent-resistant	•	•	•	•	•	•	•	•	•
Lighting Halogen headlamps, impact-resistant	•	•	•	•	•	•	•	•	•
2 halogen fog lamps, located in front bumper	•	•	•	•	•	•	•	•	•
Steps Tubular side steps, diamond plate surface pattern	O	•			O	•			
Tires P225/75R16 Goodyear Wrangler ST, BSW on-/off-road	•				•			•	
P255/75R17 Goodyear Wrangler SR-A, OWL, on-/off-road		•			•				
P255/70R18 Bridgestone Dueler A/T, OWL, on-/off-road		•				•			
LT255/75R17 BFGoodrich® Mud Terrain, BSW, off-road				•				•	
Tops Sunrider® easy-folding soft top with sunroof feature	•	•	•	•	•	•	•	•	•
Freedom Top® three-piece modular hardtop with rear wiper/washer, rear defroster, full-framed doors and Freedom Panel storage bag	O	O	O	O	O	O	O	•	O
Body-color hardtop			O				O		
Dual-Top Group, includes Freedom Top hardtop and Sunrider Soft Top	O	O	O		O	O		O	
INTERIOR									
115-Volt Outlet To power household items, laptops (12-volt power outlet standard on all models)			•	•			•		•
Air Conditioning Manual temperature controls	O	•	•	•	•	•	•	•	•
Automatic temperature controls			O	O			O		O
Console Full-floor with front and rear cup holders, locking storage and armrest	•	•	•	•	•	•	•	•	•
Floor Mats Front, carpeted	•	•	•	•					
Front and rear, carpeted					•	•	•	•	•
Gauges Compass, temperature and mini trip display (includes average fuel economy, distance to empty or elapsed time)	•	•	•	•	•	•	•	•	•
Heated Front Seats Included with leather-trimmed seats			O/P/O/P			O/P		O/P	
Instrument Panel Storage Bin	•	•	•	•	•	•	•	•	•

SIRIUS® SATELLITE RADIO® This unique service delivers over 130 channels, including 100% commercial-free music, sports, news, talk, entertainment, traffic and weather. Factory-installed SIRIUS Satellite Radio includes a one-year complimentary subscription. For more information, go to sirius.com.

**SIRIUS
TRAVEL LINK**

	Wrangler				Wrangler Unlimited				
	Sport	Sahara	Rubicon		Sport	Sahara	RHD	Rubicon	
INTERIOR cont.	B	S	G	R	C	S	G	U	R
Lighting Dome, sound bar-mounted with on/off switch and directional lighting	•	•	•	•	•	•	•	•	•
Rear cargo with on/off switch					•	•	•	•	•
Remote Start System Integrated key fob controls (requires Power Convenience Group and automatic transmission)			O	O		O		O	O
Reversible Cargo Mat Removable, with Jeep logo	•	•	•	•	•	•	•	•	•
Seating, Fabric Cloth, two-tone	•	•	•	•	•	•	•	•	•
Leather-trimmed, two-tone			O	O		O		O	O
Seats Front — 4-way manual, driver's seat height adjuster with front seatback map pockets	•	•	•	•	•	•	•	•	•
Rear — Fold and Tumble seatback, removable	•	•	•	•					
Split-folding 60/40 with self-articulating outboard head restraints					•	•	•	•	•
Steering Wheel Leather-wrapped, includes speed control (included with Connectivity Group)	O	P	•	•	O	P	•	•	•
Wash-Out Interior Removable front and rear carpet panels and drain plugs	•	•	•	•	•	•	•	•	•
SAFETY AND SECURITY									
Air Bags [®] Advanced multistage driver and front-passenger	•	•	•	•	•	•	•	•	•
Supplemental front-seat mounted side		O	O	O		O	O	O	O
Brakes 4-wheel disc antilock with on-/off-road calibration	•	•	•	•	•	•	•	•	•
Electronic Stability Control (ESC) [®] Includes Brake Assist, all-speed traction control, Electronic Roll Mitigation and on-/off-road brake lock differentials	•	•	•	•	•	•	•	•	•
Hill Descent Control (included with 4-speed automatic transmission)	P	P	P	P	P	P	P	P	P
Hill Start Assist (HSA) [®] Delays vehicle from rolling back when starting on an incline	•	•	•	•	•	•	•	•	•
Sentry Key [®] Antitheft engine immobilizer	•	•	•	•	•	•	•	•	•
Uconnect [®] MULTIMEDIA									
Media Center Radios Media Center 130 radio AM/FM/CD radio with MP3/WMA support and audio jack	•	•	•	•	•	•	•	•	•

AUTOMOBILITY. Chrysler Group LLC's Automobility program provides aftermarket reimbursement incentives on adaptive vehicle upfit equipment in order to help provide safe and reliable vehicle modifications to enhance accessibility for all people. For more information, call (800) 255-9877 or visit chryslerautomobility.com.

**AUTOMOBILITY
PROGRAM**
CHRYSLER | JEEP | DODGE | RAM

	Wrangler				Wrangler Unlimited			
	Sport	Sahara	Rubicon		Sport	Sahara	RHD	Rubicon
Uconnect® MULTIMEDIA cont.	B	S	G	R	C	S	G	U
Media Center 430N CD/DVD radio with MP3/WMA support, 30GB hard drive with 6,700 song capacity, 6.5-inch touch screen, SIRIUS® Satellite Radio,™ audio jack, Voice Command, Garmin® Navigation, SIRIUS Traffic,™ SIRIUS Travel Link,™ and Uconnect Phone					O	O		O
Media Center 730N CD/DVD radio with MP3/WMA support, 30GB hard drive with 4,250 song capacity, 6.5-inch touch screen, SIRIUS® Satellite Radio,™ audio jack, Voice Command, GPS Navigation, SIRIUS Traffic™ and Uconnect Phone					O	O		O
Audio Systems 6 speakers	•	•			•	•		•
7 ∞Infinity™ speakers with subwoofer and 368-watt amplifier		O	•	•	O	O	•	•
SIRIUS Satellite Radio™ Includes 1-year subscription	O	O	•	•	O	O	•	•
Uconnect Voice Command Hands-free calling with Address Sync,™ Bluetooth™ and Remote USB Port (included with Connectivity Group)	P	P	P	P	P	P	P	P
Uconnect Web™ Internet connection and WiFi Hotspot. Dealer-installed Authentic Jeep Accessory by Mopar. Subscription required; sold separately	O	O	O	O	O	O	O	O
PACKAGES								
Black Appearance Group Includes Black Tubular Side Steps, Black Fuel Filler Door, and Black Taillamp Guards (Authentic Jeep Accessories by Mopar)	O	O			O	O		
Connectivity Group Includes Electronic Vehicle Information Center (EVIC), Uconnect Voice Command, and Leather-Wrapped Steering Wheel	O	O	O	O	O	O	O	O
Chrome Edition Group Includes Chrome Tubular Side Steps, Chrome Exhaust Tip, Chrome Fuel Filler Door and Chrome Taillamp Guards (not available with Black Appearance Group) (Authentic Jeep Accessories by Mopar)	O	O	O		O	O		O
Premium Chrome Group Includes Chrome Exterior Mirror Caps and Chrome Grille (requires Chrome Edition Group) (Authentic Jeep Accessories by Mopar)	O	O	O		O	O		O
Power Convenience Group Power locks, power heated mirrors, power windows with front one-touch down operation, remote keyless entry system and security alarm (requires full-framed doors)		O	•	O		•	•	•
Smoker's Group Removable ashtray and lighter element	O	O	O	O	O	O	O	O

• = Included. P = Available within package noted. O = Optional.

• = Included. P = Available within package noted. O = Optional.

¹Based on Ward's Small Sport/Utility Vehicle segmentation. ²No system, no matter how sophisticated, can repeal the laws of physics or overcome careless driving actions. Performance is limited by available traction, which snow, ice and other conditions can affect. When the ESC warning lamp flashes, the driver needs to use less throttle and adapt speed and driving behavior to prevailing road conditions. Always drive carefully, consistent with conditions. Always wear your seat belt. ³Be sure to follow all instructions in Owner's Manual for removal of top, doors, and lowering of windshield. Driving with doors off and windshield down is for off-road use only. ⁴Required SIRIUS Radio, Traffic, Travel Link, and Backseat TV subscriptions sold separately after trial period. Other fees and taxes will apply. SIRIUS Traffic and Travel Link available in select markets; TV subscription not available without SIRIUS Radio subscription; and SIRIUS data displays and individual product availability vary by hardware equipment. SIRIUS service available only to those at least 18 years of age in the 48 contiguous U.S.A., DC, and Puerto Rico (with coverage limitations), while Internet radio is also available in AK, HI, and PR. Fees and programming subject to change. Service automatically renews and you will be billed at then current rates, unless you call 1-888-539-7474 to cancel. Subscriptions governed by SIRIUS Terms and Conditions available at sirius.com. Service available in Canada; see www.siriuscanada.ca. ⁵Do not attempt water fording unless depth is known to be less than 20 inches. Traversing water can cause damage that may not be covered by the new vehicle warranty. Always off-road responsibly in approved areas. ⁶The advanced front air bags in this vehicle are certified to the new U.S. federal regulations for advanced air bags. Children 12 years old and younger should always ride buckled up in a rear seat. Infants in rear-facing child restraints should never ride in the front seat of a vehicle with a passenger front air bag. All occupants should always wear their lap and shoulder belts properly. ⁷Phone must support Bluetooth Phone Book Access Profile (PBAP). ⁸Uconnect Web feature is not intended for use by the driver while the vehicle is in motion. Always drive carefully. Subscription required. ⁹Late availability. ¹⁰Late availability. Garmin and the Garmin logo are registered trademarks of Garmin, Ltd. or its subsidiaries and are registered in one or more countries, including the U.S. ¹¹Be sure to follow all instructions in Owner's Manual for trailer towing. For specific details, discuss your plans with your Jeep, dealer, who will help you select the right equipment to meet your specifications. ¹²There are special cooling requirements for non-factory-installed air conditioning. Failure to follow these requirements may invalidate warranty.

This brochure is a publication of Chrysler Group LLC. All product illustrations and specifications are based upon current information at the time of publication approval. Chrysler Group LLC reserves the right to make changes from time to time, without notice or obligation, in prices, specifications, colors, materials and to change or discontinue models, which are considered necessary to the purpose of product improvement or for reasons of design and/or marketing. Jeep, the Jeep Grille, Wrangler, Rubicon, Sahara, Command-Trac, Freedom Top, Mopar, Rock-Trac, Sentry Key, Trail Rated, Tru-Lok and Uconnect are registered trademarks of Chrysler Group LLC. Bluetooth is a registered trademark of Bluetooth SIG, Inc. BFGoodrich is a registered trademark of Goodrich Corporation. Bridgestone and any Bridgestone products or service names are trademarks of Bridgestone Corporation. Element and Sunrider are trademarks of Bestop, Inc. Garmin and the Garmin logo are registered trademarks of Garmin, Ltd. or its subsidiaries and are registered in one or more countries, including the U.S. ∞Infinity is a trademark of Harman International Industries, Inc. iPod is a registered trademark of Apple Inc. SIRIUS, XM and all related marks and logos are trademarks of SIRIUS XM Radio Inc. and its subsidiaries. WARN is a registered trademark of Warn Industries, Inc.

Litho in U.S.A. 74-383-2170 (1999M)

treadlightly!
ON LAND AND WATER



As a founding member and official partner, we urge all Jeep owners to "Use common sense and stay on designated trails" and follow Tread Lightly! Guidelines, helping preserve the beauty of our landscape for generations to come. Call (800) 966-9900 or visit treadlightly.org to learn more.

Travel responsibly on designated roads and trails or in permitted areas.

Respect the rights of others, including private property owners and all recreational trail users, campers and others, to allow them to enjoy their recreational activities undisturbed.

Educate yourself by obtaining travel maps and regulations from public agencies, planning for your trip, taking recreation skills classes, and knowing how to use and operate your equipment safely.

Avoid sensitive areas such as meadows, lakeshores, wetlands and streams, unless on designated routes. This protects wildlife habitat and sensitive soils from damage.

Do your part by leaving the area better than you found it, properly dispose of waste, minimize the use of fire, avoid the spread of invasive species, restore degraded areas, and join a local enthusiast organization.





1986 Jeep CJ-7

LEGENDARY LINEAGE. There's no other vehicle like it on earth. For nearly 70 years, Jeep Wrangler has ruled the rocks, road, and mud, taking complete charge of courageous capability. From the heroic Willys MB that played a major role during WWII and the wildly popular CJ-7 to its worldly incarnation today, Wrangler's strength, endurance, and style are iconic. Where dreamers become doers, where every road leads to adventure, this is the legendary landscape where you and your Wrangler will thrive.

jeep.com



Mixed Sources

Product group from well-managed forests, controlled sources and recycled wood or fiber
www.fsc.org Cert no. XXX-XXX-000
© 1996 Forest Stewardship Council

Jeep is a registered trademark of Chrysler Group LLC.

(800) 925-JEEP