



**Actual vehicle may vary from the visual above*

CHEROKEE | **Jeep**[®]

LONGITUDE

An impressive exterior features 18-inch Polished Aluminum Wheels, Bright Chrome roof rails and front grille inserts. Inside, ambient LED lighting, a leather-wrapped steering wheel and fold-flat front passenger seat with in-seat storage are clever standard features.



**Actual vehicle may vary from the visual above*

**Actual vehicle may vary from the*



STANDARD

- Dual-Zone Automatic Temperature Control
- Body color mirrors
- Body color door handles
- Leather-wrapped shift knob
- 18-inch polished aluminum wheels
- Uconnect® 8.4-inch Touchscreen Navigation Ration/MP3/USB port
- Bright Chrome daylight opening (DLO)
- Bright roof rails
- Front fog and cornering lamps
- Leather-wrapped steering wheel with audio controls
- Fold-flat front passenger seat with in-seat storage
- Ambient LED lighting
- Fabric Interior

**Actual vehicle may vary from the visual above*

**Vehicle specifications may vary accordingly*

TRAILHAWK®

This species arrives with standard Trail Rated® capability, including Jeep® Active Drive Lock 4WD with a rear-axle locker and Selec-Terrain® with Rock mode. Red tow hooks, an off-road suspension system and skid plates are exclusive to Trailhawk®.



*Actual vehicle may vary from the visual above.

STANDARD (includes Longitude features plus or replacing)

- Jeep® Active Drive Lock 4WD with rear-axle locker
- Two Red Trail Rated® badges
- 1-inch raised ride height
- Off-road suspension, skid plates
- 17-inch off-road polished/painted aluminum wheels with All-Season tires
- Full-size spare tire
- 7-inch customer-configurable Multi-View Display
- Uconnect® 8.4-inch Touchscreen Navigation Radio/MP3/USB port
- Off-road front and rear fascias
- Black daylight opening (DLO)
- Red tow hooks (2 front, 1 rear)
- Premium leather seating surfaces
- Cargo net, all-weather floor mats
- Selec-Speed® Control
- Selec-Terrain® with Rock mode
- Red interior accent stitching
- Dark Neutral Gray exterior accents including grille surrounds, exterior mirrors, lower fascia, roof rails, badging
- Leather Interior

**Actual vehicle may vary from the visual above*

**Vehicle specifications may vary accordingly*



The Cherokee Trailhawk® has a solid, powerful look to it. The skid plates, one-inch suspension lift, all-season tires, aluminum wheels and front and rear tow hooks all serve a purpose. All of the features tie back to being Trail Rated® – always ready for almost any weather or terrain.





**Actual vehicle may vary from the visual above*



1



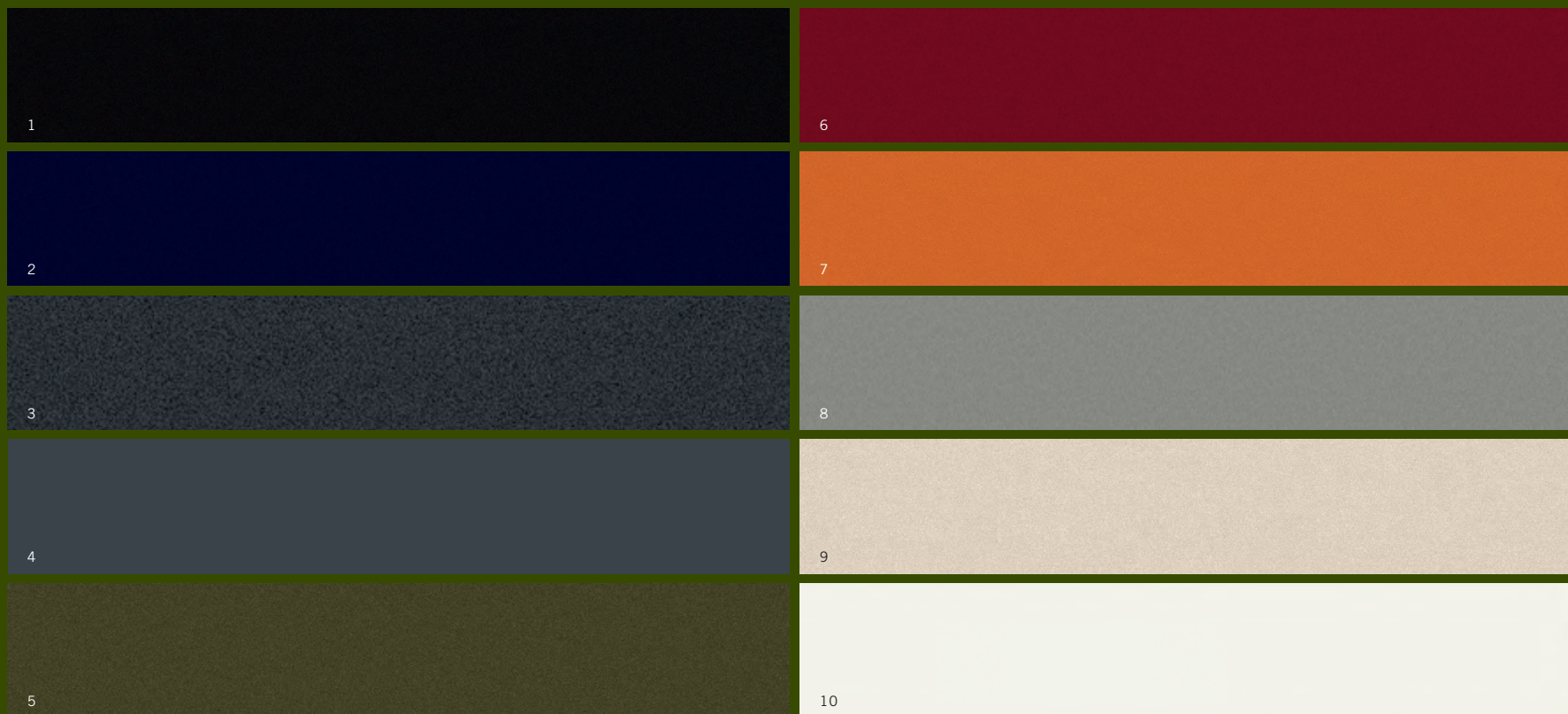
2

WHEELS

1. 18-inch Polished Aluminum (Cherokee Longitude)
2. 17-inch Polished Surface with Jet Black Semi-Gloss Painted Pockets (Cherokee Trailhawk®)

**Actual vehicle may vary from the visual above*

**Vehicle specifications may vary accordingly*



EXTERIOR COLORS

1. Brilliant Black Crystal Pearl
2. True Blue Pearl
3. Granite Crystal Metallic
4. Anvil
5. Eco Green Pearl

6. Deep Cherry Red Crystal Pearl
7. Mango Tango Pearl
8. Billet Silver Metallic
9. Cashmere Pearl
10. Bright White

**Actual vehicle may vary from the visual above*

**Vehicle specifications may vary accordingly*

TECHNICAL SPECIFICATIONS

POWERTRAIN

Engine	2.4 I-4
Displacement (cu cm)	2360
Horsepower (KW (HP) @ RPM)	130 [174] @ 6400
Torque (NM @ RPM)	229 @ 3900
Axle Ratio (:1)	3.734
	Trailhawk®: 4.083
Fuel System	Multiport fuel injection

BRAKE SYSTEM

Type	Power, single-rate, tandem diaphragm vacuum, ABS
Front	330mm x 28mm vented disc
Rear	2.4: 278mm x 12mm disc, 3.2 and 2.0: 320mm x 12mm

ELECTRONIC STABILITY CONTROL

Four-channel, four-wheel drive disc antilock with active wheel speed, steering wheel angle, yaw-rate and lateral acceleration sensors, vehicle stability management, All-Speed Traction Control, Brake Assist, Electronic Roll Mitigation (ERM) and Electronic Brake-force Distribution (EBD).

STEERING

Electric power rack and pinion	4x2 and 4x4: 15.15, 4x4 Lock: 15.36
Ratio	4x2 and 4x4: 2.56, 4x4 Lock: 2.67
Turns (Lock-to-lock)	4x2: 37.7 (11.5), 4x4: 37.7 (11.5)
Turning Diameter (curb-to-curb), ft (m)	4x4 Lifted: 38.2 (11.7)

BODY DESIGN

Unibody structure based on Chrysler and FIAT® common underbody architecture strategy. All-steel frame structural members welded and bonded into a single unit. Constructed of approximately 65 percent advanced, hot-stamped/high-strength steels, the body structure on the Cherokee is as solid and stiff as any in its competitive set and enables precise tuning and dynamic control.

SUSPENSION

Front: MacPherson strut, one-piece aluminum subframe, aluminum lower control arms and knuckles, high-strength steel coil springs and stabilizer bar.

Rear: multilink rear suspension, aluminum lateral links, isolated high-strength steel rear cradle, coil springs and stabilizer bar.

*Vehicle specifications may vary accordingly

EXTERIOR (mm unless otherwise specified)

	4x2	Jeep® Active Drive I 4x4	Jeep® Active Drive II 4x4	Jeep® Active Drive Lock 4x4
Wheelbase	2699.1	2700	2718.8	2718.8
Overall Length	4624	4624	4624	4624
Overall Width	1858.5	1858.8	N/A	1903.6
Track, Front	1579.7	1579.7	1593.5	1613.5
Track, Rear	1573.2	1573.2	1594.1	1614.1
Overall Height				
(at shark fin)	1681.5	1680.5	1707	1731.8
Ground Clearance				
(max)	N/A	N/A	193.8	221.6
Approach Angle	16.9°	18.2°	20.0°	28.3°
Breakover Angle	17.8°	18.4°	20.6°	22.8°
Departure Angle	N/A	N/A	N/A	32.2°
Water Fording Depth	N/A	482	482	508



TOWING DATA (kg, 2WD/4WD)

Load/Frontal Area/Tongue Weight

All 2.4L 2200



INTERIOR (mm unless otherwise specified, front/rear)

Seating Capacity	2 / 3 adults
Head Room	999.9 / 978.2
Leg Room	1045.1 / 1023.2
Shoulder Room	1462.3 / 1399.8
Hip Room	1366.6 / 1268.1
Cargo Volume	
Rear seat up	506 L
Rear seat folded	1500 L

CAPACITIES/WEIGHTS (kg unless otherwise specified)

Fuel Tank	60 L
Payload Capacity (with all occupants and cargo)	454

FEATURE SPECIFICATIONS

ENGINE		LONGITUDE	TRAILHAWK®
2.4 I-4 Tigershark® Multiair® 2		•	•
TRANSMISSION			
9-speed Automatic Transmission		•	•
CAPABILITY			
Exhaust System	— Single rear exhaust with bright tip	•	•
	— Jeep® Active Drive Lock, 2-speed 4WD with rear-axle locker	—	•
Fuel Door	— Power-locking fuel filler door	•	•
Selec-Speed® Control/Hill Ascent Control		—	•
Selec-Terrain®	— Floor dial with up to five traction control settings (4x4 models only)	•	•
Suspension	— Normal-duty	•	—
	— Off-road	—	•

(•) = Standard (—) = Not Available

*Vehicle specifications may vary accordingly

EXTERIOR			LONGITUDE	TRAILHAWK®
Deep-Tint Sunscreen Glass			—	•
Exhaust System	— Accent/body color		—	•
	— Rear fascia skid plate appliqué		—	•
Grille	— Chrome grille surround		•	—
	— Accent-color grille surround		—	•
Lighting	— Fog lamps		—	•
	— Fog and cornering lamps		•	—
	— Rear fog lamps		•	•
	— Automatic headlamps, includes rain-sensing windshield wipers		•	•
	— Bi-Xenon High Intensity Discharge (HID) headlamps, includes headlamp washers, automatic headlamps, automatic headlamp leveling system		•	•
	— LED daytime running headlamps		•	•
	— Headlamps-off time delay		•	•
	— Black headlamp bezels		•	•

(•) = Standard (—) = Not Available

*Vehicle specifications may vary accordingly

FEATURE SPECIFICATIONS

EXTERIOR (continued)		LONGITUDE	TRAILHAWK®
Mirrors	— Power, heated with courtesy lamps and supplemental signals	•	•
	— Body color	•	—
	— Accent-color	—	•
Roof Rails	— Bright	•	—
	— Accent-color	—	•
Wheels	— 18-inch polished aluminum	•	—
	— 17-inch Trailhawk® wheels with polished face and black painted pockets	—	•
	— CommandView® Dual-Pane Panoramic Sunroof; includes full power sunroof with power sunshade in front and fixed glass in the rear	•	•
Wheel Flares	— Off-road	•	•
Wiper System	— Front, variable/intermittent	•	•
	— Front, rain-sensing automatic feature	•	•
	— Rear, with washer	•	•

(•) = Standard (—) = Not Available

*Vehicle specifications may vary accordingly

INTERIOR		LONGITUDE	TRAILHAWK®
3.5-inch High-resolution Thin Film Transistor (TFT) Cluster		•	—
7-inch Color TFT Cluster		—	•
Air Conditioning	— Dual-Zone Automatic Temperature Control, includes humidity sensor and premium air filter	•	•
Air Filtration System		•	•
Cargo Area	— Includes 8 cargo tie-down loops	•	•
	— Cargo net	•	•
Console	— Overhead front	•	•
	— Full-length front floor console	•	•
	— Instrument panel top storage bin	•	•
Cup Holders	— Illuminated	•	•
	— Rearview, auto-dimming with microphone	•	•
Seats	— Cloth	•	—
	— Leather	—	•
	— Power 8-way driver seat and power 4-way driver lumbar adjuster	•	•
	— Front passenger forward fold-flat with underseat cushion storage	•	•

(•) = Standard (—) = Not Available

**Vehicle specifications may vary accordingly*

FEATURE SPECIFICATIONS

EXTERIOR (continued)		LONGITUDE	TRAILHAWK®
Seats, 2nd Row	— 60/40 folding seat with fore/aft adjustments	—	•
Steering Wheel	— Leather-wrapped, with speed control	•	•
	— Tilt/telescoping steering column	•	•
SAFETY AND SECURITY			
Air Bags	— Advanced multistage, driver and front passenger; inflate with a force appropriate to the severity of the frontal or near-frontal impact	•	•
	— Advanced side-curtain; provides additional protection to front and rear outboard occupants in the event of a rollover	•	•
	— Advanced supplemental front seat-mounted side air bags; provide additional protection in the event of a side-impact collision	•	•
	— Driver inflatable knee bolster	•	•
Electronic Stability Control (ESC)	— Includes vehicle stability management system, Electronic Roll Mitigation, All-Speed Traction Control, Brake Assist and four-channel antilock brake system	•	•
Hill Start Assist	— Prevents vehicle from rolling back for 2 seconds when starting vehicle on an incline	•	•
Keyless Enter 'N Go™ (Passive Entry/Push-button Start)		•	•

(•) = Standard (—) = Not Available

*Vehicle specifications may vary accordingly

SAFETY AND SECURITY (continued)			LONGITUDE	TRAILHAWK®
Power Outlet	—	12-volt auxiliary in floor console bin	•	•
	—	12-volt in cargo area	•	•
	—	12-volt auxiliary in instrument panel Media Center	•	•
Full-size Spare Tire			—	•
Parksense® Rear Park Assist			•	•
Remote Start System			•	•
Security Alarm			•	•
Trailer Sway Control	—	Works in tandem with ESC to help improve handling in adverse towing conditions caused by crosswinds and traffic	•	•
AUDIO SYSTEMS				
Power Outlet	—	Alpine® Premium Audio system with 9 speakers and subwoofer, 506-watt amplifier	•	•

(•) = Standard (—) = Not Available

*Vehicle specifications may vary accordingly



**Actual vehicle may vary from the visual above*

Jeep[®]



#LiveFree

Jeep® Malaysia, No. 13, Jalan Pelukis U1/46,
Temasya Industrial Park, Seksyen U1, 40150, Shah Alam, Selangor
1800 88 JEEP (5337) | www.jeep.my