

WRANGLER

A red Jeep Wrangler is shown driving on a rocky riverbed. The vehicle is positioned in the lower-left quadrant of the frame, angled slightly towards the right. The background features a mountainous landscape with evergreen trees and a river flowing through the foreground. The image is overlaid with large, semi-transparent geometric shapes (triangles and a parallelogram) in shades of brown and grey. The Jeep logo is visible in the bottom-left corner.

Jeep

URBAN
VOYAGER





RENEW THE VIEW. EVERYTHING IN THIS
APPEALING AND SPACIOUS CABIN SUPPORTS
YOUR QUEST TO EXPERIENCE THE WORLD FROM
A RENEWED PERSPECTIVE. THROUGHOUT THE
WRANGLER UNLIMITED MODEL, YOU'LL FIND
EXCEPTIONAL QUALITY, SOLID FIT AND FINISH,
SMARTLY PLACED CONTROLS, AND A LONG LIST
OF WELCOME, AVAILABLE FEATURES THAT
FRESHEN EVERY TRIP.

LUSCIOUS LEATHER The Wrangler Unlimited model invites you into an available premium leather-trimmed interior with soft-touch surfaces featuring detailed accent stitching. An available leather-wrapped front grab handle and ultra leather-wrapped shift boots with accent stitching add a very distinctive touch.

PLUG IN AND PLAY Connect to and power up your devices with the USB, USB-C, 12-volt and audio jack Media Hub on the front dashboard. An additional 115-volt outlet and two USB ports are on the rear of the center console of Wrangler Unlimited.

UCONNECT® 4 NAV WITH 8.4-INCH DISPLAY A large, full-color, high-definition touchscreen display provides crisp resolution. Smartphone integration is offered with Android Auto™¹ and Apple CarPlay.™² Safety apps like Siri® Eyes Free³ offer peace of mind. Premium pinch-to-zoom navigation and more are available as well. Available.

U.S. Uconnect screen shown.



ACCENTED ELEGANCE

Details matter, especially in the Wrangler Unlimited model. Brushed painted "Grillz" bezels, handles and knobs get noticed, proving the point.

7-INCH DRIVER INFORMATION DISPLAY

Front and center in the gauge cluster, you'll find a wealth of scrollable vehicle data in full color that you safely control via steering wheel buttons. Standard on Wrangler Unlimited and Rubicon.®

DUAL-ZONE AUTOMATIC TEMPERATURE CONTROL

Constantly adjusts air temperature inside the cabin to create separate, customized environments for driver and front passenger. Available.

WEATHERPROOF PUSH-BUTTON START

The standard push-to-start button is protected by a water-resistant shield, so you're always able to start up and head out should the weather outside accidentally come inside.

REMOTE PROXIMITY ENTRY

Keep the key fob in your pocket, and you can simply open the door, get comfortably seated with your foot on the brake, press the Start button and head out. Standard.



ALPINE® PREMIUM SOUND SYSTEM

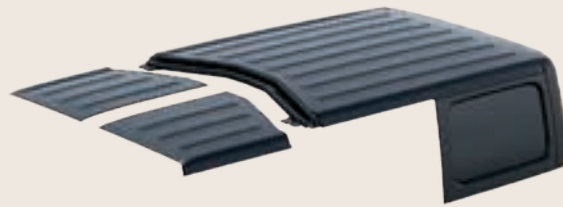
Immerse yourself in an exhilarating audio experience with nine speakers, including an overhead sound bar, an all-weather subwoofer and a 552-watt amplifier. The system is enhanced by acoustic laminated windshield glass. Available.



EXCEPTIONAL CHARACTER



WRANGLER GIVES YOU MORE THAN ONE WAY TO BECOME ONE WITH THE UNIVERSE. TWO UNIQUE TOP STYLES BOTH LEAVE YOU OPEN TO EXPERIENCE THE KIND OF FRESH-AIR FREEDOM THAT ONLY WRANGLER CAN DELIVER. SO, DECIDE HOW YOU WANT TO GET YOUR TOP ON, THEN GET READY TO TAKE IT RIGHT OFF.



FREEDOM TOP® MODULAR HARDTOP

This three-piece hardtop is light and easy to remove⁵. For a full open-air experience, you can remove⁵ all three sections. Or, let the sun in by just removing⁵ the two front panels. Available in Black on all trim levels or body-color on Wrangler Unlimited model.

FOLD-DOWN WINDSHIELD⁵ AND REMOVABLE⁵ DOORS

Remove⁵ just four windshield bolts to quickly fold down the windshield, securing it with provided straps. Side doors are made of lightweight aluminum and are easy to remove⁵ with included tool.



ADAPTS TO ANY WEATHER Flip back just the front portion over the driver and front passenger, or remove⁵ all side and rear windows while keeping the upper section in place to get fresh air and shade all at once.



STAND OUT WHEN YOU GO OUT



2.0 TURBO I-4 ENGINE Performs with V6 muscle, yet sips fuel as an I-4 should. The 2.0 Turbo I-4 engine offers fuel-saving/energy-generating functions that include auto-stop/start, electric power assist, extended fuel shutoff and transmission shift management. Direct injection boosts power while reducing emissions, and ESS technology improves fuel economy. With its standard match to the 8-speed transmission, you'll enjoy strong takeoffs and smooth highway coasting.

ENGINE STOP/START (ESS) TECHNOLOGY helps reduce CO₂ emissions and improve efficiency by using a dual-battery system and sophisticated controls to reduce fuel flow and turn off the engine when the vehicle brakes to a stop. When the brake pedal is released, the engine seamlessly restarts and the transmission engages. Standard.

8-SPEED AUTOMATIC TRANSMISSION With smooth, quick efficiency, this transmission provides additional gears with no gain in weight, enhanced acceleration with reduced fuel consumption and increased torque with added strength to pull.

ALWAYS IN TOUCH

HERE'S YOUR WINDOW INTO A
WIDER CIRCLE OF CONNECTIVITY:
UCONNECT® OFFERS AN IMPRESSIVE
RANGE OF COMMUNICATION
AND ENTERTAINMENT SERVICES,
DELIVERING THEM STRAIGHT
INTO YOUR WRANGLER.

 uconnect®



THE NEXT WAVE OF PERSONALIZATION AND CONNECTIVITY HAS ARRIVED WITH AVAILABLE FEATURES LIKE SIRI® EYES FREE³, VOICE COMMANDS⁷, AND DO NOT DISTURB THAT ROUTE INCOMING CALLS AND TEXTS, AND THE DRAG-AND-DROP MENU BAR WHICH ALLOWS YOU TO DISPLAY YOUR TOP UCONNECT® FEATURES AND SERVICES.

PHONE/TEXT

Make hands-free⁷ phone calls or use your voice to send a text. Pair up to eight Bluetooth® enabled phones. The Do Not Disturb feature allows you to see a visual prompt of incoming calls or texts and send an automated reply.

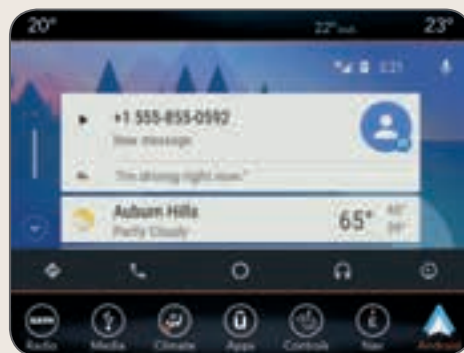
TALK AND WRANGLER RESPONDS

Use voice commands⁷ with Siri® Eyes Free³ and your connected iPhone® to create and send texts, make and receive calls, access directions, and play music. Available.



Display your favorite iPhone apps right on your Uconnect touchscreen. Access your iTunes® library, call anyone in your contacts list and ask Siri anything. Get directions, make calls and send messages, and connect to Apple Music, all without pausing your journey. Available.

U.S. Uconnect screens shown.



androidauto

Bring the best of Google along with you in your Uconnect system. Easy touchscreen navigation and voice recognition let you access Google Play Music, get directions with Google Maps™ and ask Google any question on the go, at any time. Available



NAVIGATION

Dinner reservations at the new place in town? Uconnect employs GPS Navigation for audible turn-by-turn directions, and detailed 3-D maps help to ensure you arrive on time. The NAV is also integrated into your 7-inch Driver Information Display so you can see directions front and center. Use voice commands⁷ and say the complete address to get directions quickly. Available.



TOUCHSCREEN CONTROLS

Set temperature controls and so much more — all from the touchscreen. A drag-and-drop menu allows you to highlight your top six favorite features and services so they're always in sight on your 8.4-inch Uconnect® touchscreen display.



U.S. Uconnect screens shown.



FIRST IMPRESSION:
UTTERLY STRIKING



Properly secure all cargo.

EVERYTHING HAS A PLACE WHERE IT BELONGS — INCLUDING THE CARGO YOU CARRY. WRANGLER IS DESIGNED TO MAKE TAKING TO THE ROAD AN EASY TASK. WRANGLER UNLIMITED OPENS UP TO HAND OVER A WELCOMING 2.05 CUBIC METERS OF FUN WITH THE REAR SEATS FOLDED, SO YOU CAN GO ALL OUT WHEN YOU GET IT ALL IN.


TRAIL RAIL™ CARGO MANAGEMENT SYSTEM Accessorize your cargo-carrying capability with this versatile system, optional on all Wrangler models. It includes aluminum rails on the tailgate and cargo floor along with cargo anchors that lock into place.

IN-FLOOR STORAGE BIN The cargo floor behind the second row of seats hides a storage area whose lid secures when the swing gate is closed — perfect for storing larger items, like computers and tools.

BINS AND POCKETS The cabin is designed to help you stay organized with cubbies, pockets and bins throughout, giving you plenty of places to store phones, computers, tablets, maps, gaming devices and more. The two-tiered center console has a main bin big enough to fit an iPad® and a convenient top tray for smaller gear. Cup holders are sized to hold larger beverage containers and have a dedicated slot for cell phone or key fob storage.



Properly secure all cargo.

A silver Jeep Wrangler is shown from a front-three-quarter perspective, driving on a two-lane asphalt road that curves through a dense forest. The background is blurred to convey a sense of speed. The vehicle has a black soft top and a black front bumper with fog lights. The iconic seven-slot grille and round headlights are prominent.

TAKE TO THE ROAD WITH PLENTY
OF SELF-ASSURANCE, KNOWING
YOU'RE RELYING ON THE ADVANCED
SAFETY SYSTEMS WRANGLER HAS ON
BOARD. YOU'RE PREPARED FOR
VIRTUALLY ANY ADVERSE CONDITION,
WITH A BODY MADE OF HIGH-
STRENGTH STEEL AND OUTFITTED TO
SUPPORT THE WELL-BEING
OF EVERY OCCUPANT.

UNMATCHED
CONFIDENCE

WRANGLER ENVELOPS YOU WITH MORE

THAN 70 STANDARD AND AVAILABLE

SAFETY AND SECURITY FEATURES.

REMAIN CONFIDENT DRIVING IN ALL

WEATHER CONDITIONS, THANKS TO THE

STRENGTH OF A REINFORCED STRUCTURE

EMPOWERED WITH BOTH PASSIVE AND

ACTIVE SAFETY SYSTEMS.



PARKSENSE® REAR PARK ASSIST SYSTEM[®] Works in tandem with ParkView® Rear Back-Up Camera[®] to display previously hidden objects, bringing them to your attention on-screen and with an audible warning so you have time to react. At speeds below 6 km/h, the system will automatically bring the vehicle to a stop if an object is detected. Available.

ELECTRONIC STABILITY CONTROL (ESC)[®]

A vehicle-wide network of safety sensors help maintain vehicle control, providing instant aid should it detect you're veering off your intended path.

ESC[®] coordinates Electronic Roll Mitigation (ERM), Antilock Brake System (ABS) and Brake Assist, all-speed traction control, and available Trailer Sway Control (TSC)[®], sending them into action when needed. Standard.

HILL START ASSIST (HSA) AND HILL DESCENT CONTROL (HDC) HSA works to prevent Wrangler from rolling when starting on an uphill gradient. HDC is packaged with the standard 8-speed automatic transmission, helping Wrangler navigate steep declines at a steady speed. Standard.



UCONNECT® INTEGRATED VOICE COMMAND⁷ WITH BLUETOOTH[®] Multitasking is the way of today's world, even when you're on the road. This important safety feature allows drivers to safely send, reply or listen to a text, take or make phone calls, request detailed information like fuel prices, get navigation directions, and more while keeping both hands on the wheel. Standard.

PARKVIEW® REAR BACK-UP CAMERA⁹ WITH TRAILER VIEW When the vehicle is in Reverse, the Uconnect® screen displays a wide-angle view of what's immediately behind your vehicle. You'll see objects behind you that may have been out of your sightline (along with hearing an audible warning) — all in good time to react. On-screen dynamic grid lines help you visualize your back-up path or line up a trailer to your hitch. You'll also be able to keep an eye on your tow load while in motion. Available.



TRAILER SWAY CONTROL (TSC)⁶ Crosswinds and traffic hold no sway over you and your payload. As part of Electronic Stability Control[®], TSC[®] helps keep you and the toys you tow safely on course. Standard.

LED LIGHTING GROUP Maintain a unique — and safe — presence after dark and add extra visual security during the day. The traditional round headlamps are equipped with unique daylight running lamps (DRLs), and the Group's LED headlamps, taillamps and front LED fog lamps enhance visibility during inclement weather. Available.

SENTRY KEY® ENGINE IMMOBILIZER A unique, embedded key code matched only to your vehicle helps keep your Wrangler safely where you parked it. Standard.

ADVANCED MULTISTAGE AIR BAGS¹⁰ When a crash is detected, these air bags¹⁰ deploy nearly instantaneously, providing occupant protection that's matched to crash severity. Active vents exhaust air bags¹⁰ at appropriate rates, depending on impact. Standard.

SUPPLEMENTAL FRONT-SEAT-MOUNTED SIDE AIR BAGS¹⁰ Deploying from the outboard side of each front seat, these air bags¹⁰ enhance the protection of the driver and front-seat passenger in certain impacts. Standard.

BODY STRENGTH The exceptionally solid safety cage consists of high-strength steel paired with lightweight aluminum, making Wrangler lighter in weight while still providing a very strong chassis. Standard.



WRANGLER
UNLIMITED



STYLISH AND STEADFAST

This is where we've stashed
a long list of premium features so
you can drive straight into the sunset
outfitted with coveted creature comforts
as well as world-class capability. Experience
all that Wrangler Unlimited offers wherever you care to point
it — over jagged boulders or over the bustling boulevard.



U.S. Uconnect® screen shown.





(1) To use Android Auto on your phone screen, you'll need an Android phone running 5.0 (Lollipop) or higher and the Android Auto app. Android and Android Auto are trademarks of Google LLC. (2) Requires compatible iPhone. See dealer for phone compatibility. Data plan rates apply. Vehicle user interface is a product of Apple. Apple CarPlay is a trademark of Apple Inc. iPhone is a trademark of Apple Inc., registered in the US and other countries. Apple terms of use and privacy statements apply. (3) Requires an iPhone with Siri. Certain features are not available while the vehicle is in motion. iPhone must be within active cellular range. Customer's existing iPhone data rates apply to Internet-supported features. (4) Check state and local laws regarding the use of remote start systems. (5) Be sure to follow all instructions in Owner's Manual for removal of top and doors, and lowering of windshield. Driving with the doors off and windshield down is for off-road use only. (6) Always drive carefully, consistent with conditions. Always wear your seat belt and obey traffic laws. (7) The Uconnect Phone requires a mobile phone equipped with the Bluetooth Hands-Free Profile. To check phone compatibility, please visit www.UconnectPhone.com. (8) Always check visually for vehicles prior to changing lanes. (9) Always look before proceeding. An electronic drive aid is not a substitute for conscientious driving. Always be aware of your surroundings. (10) Always sit properly in designated seating positions with seat belts securely fastened at all times.

©2018 FCA US LLC. All Rights Reserved. Jeep, the Jeep grille, Freedom Top, ParkSense, ParkView, Pentastar, Rock-Trac, Rubicon, Wrangler Unlimited, Selec-Trac, Sentry Key, Trail Rated, Uconnect and Wrangler are registered trademarks and Send & Go and Trail Rail are trademarks of FCA US LLC.

Alpine and the Alpine logo are registered trademarks of Alpine Electronics, Inc. All rights reserved. Apple, Apple Music, iPad, iPhone, iTunes and Siri are registered trademarks and Apple CarPlay is a trademark of Apple Inc. BFGoodrich is a registered trademark of Goodrich Corporation. Bluetooth is a registered trademark of Bluetooth SIG, Inc. Google, Android, Android Auto, Google Play, Google Maps and all other marks are trademarks of Google LLC. Sunrider is a registered trademark of Bestop, Inc.

This catalog is a publication of FCA US LLC. All product illustrations and specifications are based upon current competitive information at the time of publication approval. FCA US LLC reserves the right to make changes from time to time, without notice or obligation, in prices, specifications, colors and materials, and to change or discontinue models which are considered necessary to the purpose of product improvement or for reasons of design and/or marketing. Jeep is a registered trademark of FCA US LLC.

