

GRAND CHEROKEE L

2022

GRAND CHEROKEE



**Jeep**<sup>®</sup>



# EXPLORE AND EXPAND

WHETHER YOU'RE HEADING INTO THE WILD OR CROSSING OVER TO TAKE IN SOME BRIGHT CITY LIGHTS, THE 2022 JEEP® GRAND CHEROKEE ELEVATES EVERY TRIP. OFFERING FEATURES THAT DEEM IT THE MOST LUXURIOUS VEHICLE IN ITS CLASS<sup>1\*</sup> OR DELIVERING BEST-IN-CLASS AVAILABLE OFF-ROAD AND 4x4 CAPABILITY<sup>2</sup>; GRAND CHEROKEE NOW OFFERS A HYBRID 4xe MODEL AS WELL AS A LONGER "L" MODEL FOR THREE ROWS OF SEATING. THERE'S NO DENYING ITS STATUS AS THE MOST AWARDED SUV EVER<sup>3</sup> WHEN YOU GRASP THE WHEEL AND TAKE TO THE ROAD ... HEADING OUT ON THE HIGHWAY OR OFF INTO THE WILDERNESS.

\*A note about this brochure: all disclosures can be found on the last page.

## JEEP® GRAND CHEROKEE

STANDARD BODY LENGTH

REFINED ACCOMMODATIONS  
FOR UP TO FIVE PASSENGERS

TWO ROWS OF SEATING

AVAILABLE  
4xe DRIVETRAIN



Summit Reserve 4xe in Bright White

## TWO STRIKING PROFILES, SAME ADVENTUROUS SOUL



Summit Reserve in Diamond Black Crystal Pearl

## JEEP GRAND CHEROKEE L

LONGER  
BODY LENGTH

IMPECCABLE INTERIOR  
FEATURES FOR UP TO  
SEVEN PASSENGERS

THREE ROWS OF SEATING



## GRAND CHEROKEE

MOST AWARDED SUV EVER<sup>3</sup>



## GRAND CHEROKEE L

FIRST GRAND CHEROKEE TO OFFER  
THREE ROWS OF SEATING FOR UP TO  
SEVEN PASSENGERS



## GRAND CHEROKEE TRAILHAWK<sup>®</sup> 4xe

MOST CAPABLE  
GRAND CHEROKEE EVER



# THE BIG PICTURE



The 2022 Jeep<sup>®</sup> Grand Cherokee delivers an impressive panorama of style, power and comfort, as seen from every angle. You now have more configuration choices than ever. Go with the two-row Grand Cherokee in any trim level you desire, or head out with the efficient Grand Cherokee 4xe hybrid or the longer Grand Cherokee L offering three rows of ultimate luxury.



Summit Reserve in Baltic Grey

AVAILABLE ON  
**3**  
ROW

AVAILABLE ON  
**2**  
ROW

# A HARMONY OF TEXTURES

Summit Reserve with Tupelo interior

Laden with quilted Palermo leather seating and trim in Tupelo or Black, the 2022 Jeep® Grand Cherokee Summit Reserve is elevated to peak sophistication. Here, you'll experience the height of luxury, from open-pore wood trim to intricately crafted bezels to a dedicated front-passenger interactive 10.1-inch touchscreen. This exceptionally trimmed Grand Cherokee is reserved for those who appreciate a full roster of standard premium amenities.



AVAILABLE ON  
**3**  
ROW

AVAILABLE ON  
**2**  
ROW

4xe

YOUR ARRIVAL  
WILL NOT GO  
UNNOTICED

Summit Reserve 4xe in Bright White





# THE MOST PLANET-FRIENDLY GRAND CHEROKEE EVER<sup>4</sup>

PLUG-IN HYBRID  
TECHNOLOGY IS THE  
DRIVING FORCE THAT —  
ONCE AGAIN — PLACES  
JEEP® GRAND CHEROKEE AT  
THE FOREFRONT OF SUV INNOVATION. GO FROM  
EXPLORING EXCITING CITY LANDMARKS IN PLUSH  
LUXURY TO REDISCOVERING THE BEAUTY OF  
NATURE IN NEAR SILENCE WITH REDUCED  
EMISSIONS, EASILY TRANSITIONING FROM  
GASOLINE TO ALL-ELECTRIC TRAVEL.



CLASS-EXCLUSIVE  
PLUG-IN HYBRID  
ELECTRIC (PHEV)  
POWERTRAIN<sup>5</sup>

57 MPGe<sup>6</sup>

24-MILE  
ALL-ELECTRIC RANGE<sup>6</sup>

443-MILE  
TOTAL DRIVING RANGE<sup>6</sup>

TRAVEL IN NEAR  
SILENCE

Summit 4xe in Bright White





# A QUIET PLACE TO RECHARGE

This all-new Jeep® Grand Cherokee Summit Reserve 4xe expands its legacy of luxury, incorporating modern comforts that soothe with smart utilities like wireless Apple CarPlay®<sup>7</sup> via a paired iPhone® (shown) or wireless Android Auto™<sup>8</sup> through a paired Android™ device. Both front-row and second-row passengers benefit from developments that usher in a new era of exceptional elegance that's both luxurious and smartly efficient.

Summit Reserve 4xe with Black interior



**YOU CHOOSE HOW AND WHEN TO OPTIMIZE THE HYBRID DRIVETRAIN** via push-button controls on the dashboard. Select HYBRID for the best of both worlds, ELECTRIC to only use battery power, or e-SAVE to reserve battery power for later — like for low-emission zones in cities or driving through a majestic cedar forest — where you'll enjoy near-silent exploring with maximum torque and horsepower.



A white Jeep Grand Cherokee Summit Reserve 4xe is shown from a front-three-quarter view, driving on a winding asphalt road. The car has a black roof and is surrounded by green trees and grass. The background is slightly blurred to suggest motion.

4xe

# REMARKABLE PERFORMANCE

---

375

HORSEPOWER<sup>9</sup>

---

---

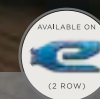
470

LB-FT OF TORQUE<sup>9</sup>

---

**JEEP® GRAND CHEROKEE SUMMIT RESERVE 4xe** places you in an exceptionally rare lane of travel, where hybrid technology drives with authentic capability while merging dramatic style with ultimate comfort. With its 20-inch polished / painted aluminum wheels, unique LED fog lamps and Black-painted roof, Summit Reserve 4xe is designed to turn heads. In addition to a standard Quadra-Trac II® Four-Wheel-Drive (4WD) system and hybrid powertrain with a rear Electronic Limited-Slip Differential, Summit Reserve adds standard safety and security systems like the new 360° cameras,<sup>10</sup> Drowsy-Driver Detection<sup>11</sup> and Traffic Sign Recognition!<sup>12</sup>

Summit Reserve 4xe in Bright White



# MOST CAPABLE GRAND CHEROKEE EVER



4xe

**JEEP® GRAND CHEROKEE TRAILHAWK® 4xe** blends power and hybrid technology, handing over Jeep® Brand capability and advanced hybrid technology all at once. A class-exclusive sway bar disconnect<sup>13</sup> improves articulation and traction over rocks and rough terrain during on-the-trail maneuvers. Quadra-Drive® II with its rear Electronic Limited-Slip Differential is fully operational in all-electric mode, where you can listen in near silence to Mother Nature's soundtrack in all its glory.



Trailhawk® 4xe with Black interior

**JEEP® GRAND CHEROKEE TRAILHAWK® 4xe** takes on adventure with plenty of comfort along for the ride. An impressive front dashboard and console present gauges, controls and full-color screens within a plush, luxurious interior design. This master of the trails invites you to preside over a new breed of hybrid style, crafted for those who appreciate finery and demand precision.

**TRAILHAWK STEERING WHEEL** It's heated for comfort, with carefully placed buttons that help accomplish important tasks. Standard.

**NEW HOOD DECAL** The Trailhawk® hood decal and tow hooks both use an Electric Blue color to identify it as a hybrid vehicle that is exceptionally capable as well. Standard.

**BLUE TOW HOOKS** Show off your 4xe status with three standard Electric Blue tow hooks: two up front and one in the rear. Their unique color signals the hybrid capabilities of your Trailhawk, always at the ready. Standard.

**OFF-ROAD PAGES** Access real-time performance data so you know just how far your suspension is traveling, know the status of your transfer case and see how you're faring on the trail with the display showing pitch/roll angles. In-depth vehicle diagnostics, including wheel turn, oil pressure, articulation and transmission temperature, GPS coordinates, and more, all help to provide an optimized experience. Standard.



# DELIGHT IN THE OPEN AIR

THE COMMANDVIEW<sup>®</sup> DUAL-PANE POWER PANORAMIC SUNROOF gives sightseers much more to enjoy. With a power sunshade in front and a fixed-glass ceiling in the rear, your world opens up. Available.

Summit 4xe with Black interior

AVAILABLE ON  
**3**  
ROW

AVAILABLE ON  
**2**  
ROW



# GET POWERED UP FAST

IT'S AS SIMPLE AS PARKING IN YOUR OWN DRIVEWAY WITH AN AVAILABLE, SIMPLE-TO-USE, SMART-ENABLED JEEP® BRAND LEVEL II EV HOME CHARGING STATION INSTALLED AT YOUR HOME!<sup>14</sup> THE LEVEL II CHARGING UNIT CAN CHARGE UP TO SIX TIMES FASTER THAN TYPICAL LEVEL I CHARGING OPTIONS!<sup>15</sup> YOU CAN UTILIZE QMERIT, OUR APPROVED COLLABORATOR, FOR INSTALLATION. FOR MORE INFORMATION, VISIT [MOPAR.COM/CHARGING-JEEP](https://mopar.com/charging-jeep)

Summit Reserve 4xe in Bright White



**CHARGING MADE EASY** We've teamed up with Qmerit to make installing a faster Level II charger more convenient.<sup>14</sup> With their certified electrification technicians and top-rated customer care specialists, Qmerit ensures your satisfaction at every step.

## Qmerit



A red Jeep Trailhawk is shown from a front-three-quarter view, driving on a rocky, uneven trail. The vehicle's headlights and fog lights are on, and its suspension is visibly working over the rocks. The background features a vast mountain range under a warm, orange-hued sunset sky. The overall scene conveys a sense of adventure and off-road capability.

# STRONG SURVIVAL INSTINCTS

THANKS TO ITS BEST-IN-CLASS AVAILABLE GROUND CLEARANCE,<sup>16</sup> TRAILHAWK® EASILY NAVIGATES THE HARSHTEST ELEMENTS WITH STRENGTH AND GRACE. THE STANDARD QUADRA-DRIVE® II FOUR-WHEEL-DRIVE (4WD) SYSTEM WITH SWAY BAR DISCONNECT AND A REAR ELECTRONIC LIMITED-SLIP DIFFERENTIAL ARE PROTECTED BY STEEL-ENFORCED SKID PLATES. QUADRA-LIFT® AIR SUSPENSION AND SEMI-ACTIVE DAMPING SYSTEMS HELP MAINTAIN A CONTROLLED, SMOOTH RIDE WHEN TRAVELING OVER RUGGED TERRAIN. A STANDARD INTEGRATED OFF-ROAD CAMERA<sup>10</sup> GIVES YOU A LOOK AT WHAT YOU'RE HEADED FOR ON THE TRAIL.

Trailhawk® in Velvet Red Crystal Pearl

AVAILABLE ON  
**2**  
ROW

# MASTERFUL 4WD

**THREE SYSTEMS ENABLE ON-DEMAND CAPABILITY,** while a fast-acting front-axle disconnect optimizes driveline efficiencies and fuel economies. Choose from Quadra-Trac I® with its active single-speed transfer case, Quadra-Trac II® with its two-speed 4-HI and 4-LO transfer case for exceptional off-road capability and maneuvering, or the Quadra-Drive® II Four-Wheel-Drive (4WD) System with its rear Electronic Limited-Slip Differential and, exclusive to Trailhawk®, sway bar disconnect. Available.



Summit in Diamond Black Crystal Pearl



**TRAIL RATED®** Wearing the Trail Rated® badge designates Jeep® Grand Cherokee has been tested and proven in five major categories, helping you navigate the most difficult challenges Mother Nature can dish out. Available.

TRACTION



WATER FORDING<sup>17</sup>



MANEUVERABILITY



ARTICULATION



GROUND CLEARANCE





Trailhawk® 4xe in Silver Zynith



Summit in Velvet Red Crystal Pearl

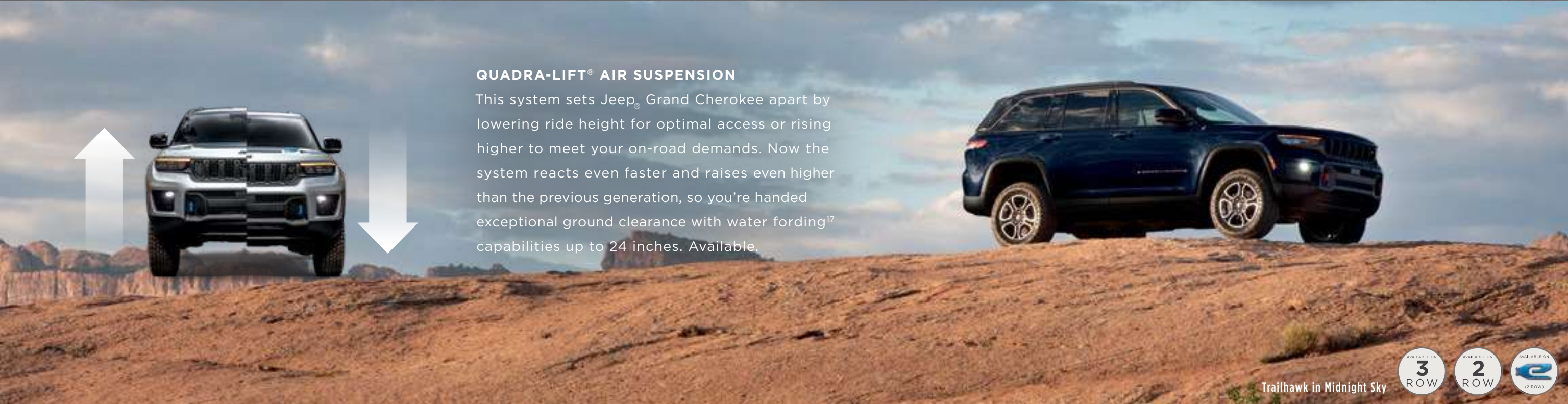


Overland® in Velvet Red Crystal Pearl

# FULLY ADAPTABLE

## SELEC-TERRAIN® TRACTION MANAGEMENT SYSTEM

This system works to optimize the on- and off-road performance of select Jeep® Brand Four-Wheel-Drive (4WD) Systems. Selec-Terrain® lets you choose traction modes (Rock, Sand/Mud, Snow, Auto and Sport) that automatically adjust to help you master every road condition you meet. Whether you're caught in snow-covered city streets or climbing backcountry hills, you'll have the confidence to bravely meet your challenges. Available.



## QUADRA-LIFT® AIR SUSPENSION

This system sets Jeep® Grand Cherokee apart by lowering ride height for optimal access or rising higher to meet your on-road demands. Now the system reacts even faster and raises even higher than the previous generation, so you're handed exceptional ground clearance with water fording<sup>17</sup> capabilities up to 24 inches. Available.

Trailhawk in Midnight Sky



GRAND CHEROKEE L

# GOES TO GREAT LENGTHS TO GET TO GREAT HEIGHTS



**BRIDGE THE GAP** between your day-to-day commuting and excursions to places others only dream of reaching. Travel in comfort enjoying the luxury and next-generation technology of this storied SUV while moving forward with confidence with advanced safety and security systems and the proven capability of Jeep® Brand Four-Wheel Drive (4WD).

Summit Reserve in Diamond Black Crystal Pearl

AVAILABLE ON  
**3**  
ROW

AVAILABLE ON  
**2**  
ROW



Summit Reserve with Tupelo interior

# ROOM AND A VIEW

Those who appreciate world-class craftsmanship will enjoy the view from the first-, second- and third-row seats of the luxurious Jeep® Grand Cherokee L Summit Reserve. The 16-way adjustable front seats offer a massage feature, while passengers in the rear ride with heating and cooling vents nearby for a more tailored climate. New, available second-row entertainment on two separate screens offers streaming capabilities<sup>18</sup> for customized viewing.



# DETAILED MASTERY

INTERIOR CRAFTSMANSHIP IS LIFTED TO ITS GREATEST HEIGHTS IN JEEP® GRAND CHEROKEE SUMMIT RESERVE. UTILIZING SOME OF THE FINEST MATERIALS AVAILABLE THE WORLD OVER, SUMMIT RESERVE EXUDES LUXURIOUS STYLE, EXECUTED WITH AN INFINITE EYE IN PRECISE DETAIL. WHETHER YOU CHOSE TO RIDE WITH FIVE PASSENGERS OR HAVE THE NEED TO ACCOMMODATE SEVEN IN THE THREE-ROW GRAND CHEROKEE L, ALL WHO EXPERIENCE LIFE AT THE SUMMIT RESERVE COME TO KNOW WHAT MASTERY IS ALL ABOUT.



# NOW EXPANSIVE

**INTERIOR LUXURY** Inspired by the authentic traditions, methods and styles of elite interior designers who have generously infused the Jeep® Grand Cherokee with iconic, yet utterly modern appointments.

Summit Reserve with Tupelo interior

AVAILABLE ON  
**3**  
ROW

AVAILABLE ON  
**2**  
ROW

JEEP® GRAND CHEROKEE L OFFERS  
UNPARALLELED, REFINED TRAVEL  
FOR UP TO SEVEN OCCUPANTS.

1. 16-WAY ADJUSTABLE FRONT SEATS WITH MEMORY AND MASSAGE, AVAILABLE
2. SECOND-ROW TIP-AND-SLIDE BUCKET SEATS, STANDARD
3. HEATED AND VENTILATED SECOND-ROW SEATS, AVAILABLE



Summit Reserve in Diamond Black Crystal Pearl

AVAILABLE ON  
**3**  
ROW

AVAILABLE ON  
**2**  
ROW

**4. INTERIOR REAR-SEAT-MONITORING CAMERA<sup>19</sup>**

Get a view of everyone in the second and third rows. Image is displayed on the main touchscreen. This includes a clear view of any rear-facing child-seat occupants, a unique zoom-to-seat feature and a split-view display. Available.



**5. POWER-FOLDING THIRD-ROW BENCH SEAT**

Exceptional seat architecture allows for roomy third-row leg room, providing easy access for “way back” passengers. A power-folding bench seat is standard on Overland® and Summit.





**STYLED STEERING** The unique, leather-wrapped, heated steering wheel on Summit Reserve is a study in luxury, featuring intricate contrast stitching and a precisely inlaid wood appliqué.

**TEXTURIZED TOUCHPOINTS** Open-pore wood, knobs and dials crafted with detailed chrome surrounds, and buttery soft Nappa leather trim all come together to create a lush variety of textures within the cabin.

**A PLACE AT THE TOP** The Summit nameplate is proudly announced on the Palermo leather-trimmed seats. For those who have climbed to the top, this is a journey well worth celebrating.



AVAILABLE ON  
**3**  
ROW

AVAILABLE ON  
**2**  
ROW



### 10.25-INCH DRIVER INFORMATION DISPLAY (DID)

A wide range of customizable information includes available navigation details, trip data, outside temperature, tire pressure monitoring, 4x4 specifications and more. Standard.



### 10.25-INCH PASSENGER SCREEN

Now front passengers have their own frameless digital touchscreen, situated on the dash directly before them. Full connectivity provides a seamless experience between a smartphone and the system. Available.



### REAR-SEAT ENTERTAINMENT WITH AMAZON FIRE TV BUILT-IN<sup>20</sup>

lets passengers enjoy a wide variety of content from popular apps. Stream videos, play games, listen to music, get information and watch downloaded programs — all while on the road. Includes two 10.1-inch screens and two Voice Remotes with Alexa.



### AMBIENT LED LIGHTING

Jeep® Grand Cherokee offers custom ambient interior lighting with color personalization, allowing you to create a unique atmosphere that reflects your mood. LED lights, with daytime and nighttime settings, glow along the entire front dashboard. Inside, the front- and second-row cup holders provide backlighting for the available front McIntosh® speakers. Available.



# STORIED ELEGANCE AND STRENGTH



**THE OVERLAND® NAMEPLATE STANDS FOR LUXURY** and authentic Jeep® Brand capability, arriving with a distinctive seven-slot grille, dual chrome tow hooks and a standard CommandView® Dual-Pane Power Panoramic Sunroof. Inside, you'll find a full complement of refined features, including Nappa leather-trimmed interior, heated front- and second-row seats with ventilation added for the comfort of front-row passengers, and a hands-free foot-activated rear liftgate that adds convenience.



Overland® in Velvet Red Crystal Pearl

AVAILABLE ON  
**3**  
ROW

AVAILABLE ON  
**2**  
ROW



The Overland® nameplate carries on, bringing craftsmanship to the cabin while adding to the comfort and convenience of every passenger.

**NAPPA LEATHER TRIM** With seating and door panels trimmed in buttery soft Nappa leather, all passengers enjoy the comfort of heated seats, while front occupants are treated to cooling ventilation as well.

**BEAUTIFUL FRONT CONSOLE** Right at hand lies a front console that adds function and convenience for the driver and the front passenger. With brushed chrome trim, lighted cup holders and a gear shift dial crafted with intricate design detail, there's a feeling of spaciousness that gives everyone that much more breathing room.

**A JOY TO BEHOLD** Overland® sets the scene with unique 20-inch fully polished aluminum wheels and a standard CommandView® Dual-Pane Power Panoramic Sunroof. Power-folding multifunction side mirrors and a hands-free foot-activated rear liftgate are also standard fare.



Overland® in Velvet Red Crystal Pearl

AVAILABLE ON  
**3**  
ROW

AVAILABLE ON  
**2**  
ROW

# ELEGANCE DEFINED

## LIMITED

Masterfully crafted from all angles, the Jeep® Grand Cherokee Limited welcomes you into a world of comfort that's matched by exceptional style. With standard LED fog lamps that help you see and be seen in inclement weather and a standard Remote Start System<sup>21</sup> that helps ready the cabin for comfort upon entry, Limited extends an invitation to experience true Grand Cherokee sophistication.



Limited in Midnight Sky

AVAILABLE ON  
**3**  
ROW

AVAILABLE ON  
**2**  
ROW



Exact executions of distinctive features are thoughtfully integrated into the world-class interior of the Jeep® Grand Cherokee Limited.

**HEATED SEATS** Front- and second-row passengers enjoy the comfort of heated seating on cold weather days. Drivers are pampered with a heated leather-wrapped steering wheel.

**QUALITY AUDIO** The Alpine® Premium Audio System with Active Noise Cancellation delivers welcomed quality sound via a 506-watt amplifier, a subwoofer and nine carefully placed speakers. Available.

**CARGO TO GO** A carpeted cargo area includes a storage tray and four tie-down loops. Fold down the second- and third-row seats to enjoy up to 84.6 cu ft of cargo volume (with the three-row model).



AVAILABLE ON  
**3**  
ROW

AVAILABLE ON  
**2**  
ROW

Limited in Midnight Sky

# PRO TONES

## AUDIOPHILE'S DELIGHT

For those who appreciate acoustic precision, McIntosh® is engineered to exceed expectations. It stands as a classic American luxury brand known for delivering high-performance levels in home music and film sound. Available.

- 18 IMPECCABLY PLACED SPEAKERS
- 10-INCH SUBWOOFER
- 17-CHANNEL, 950-WATT AMPLIFIER
- PRECISION SOUND WITH UNRIVALED CLARITY



An immersive experience in sound enjoyment can be enjoyed from every seat, thanks to the unique McIntosh speaker system.

AVAILABLE ON  
3  
ROW

AVAILABLE ON  
2  
ROW



**POWER, HEATED, MEMORY MIRRORS** These multifunctioning side mirrors help keep your rear view in clear sight. Memory functions automatically perform readjustments for two different drivers. Available.

**FINGER-TOUCH STEERING-WHEEL CONTROLS** Keep your eyes on the road while your fingertips can help you access pertinent information and adjustments on your Multi-View Display, HVAC, available Head-Up Display and Uconnect® system. Standard.

**REMOTE START SYSTEM<sup>21</sup>** Climb into a pleasantly preheated or precooled Jeep® Grand Cherokee — featuring a 300-ft range. Available.

**AUTOMATIC MULTI-ZONE TEMPERATURE CONTROL** Passengers sitting in the four climate-control zones of the front and second rows can enjoy separate air temperature settings. Available.

**WIRELESS CHARGING PAD** No need for cumbersome cords. When you need to charge your cell phone, simply place it on the pad that is conveniently within reach of the driver and front passenger. Available.

**ELECTRONIC GEAR SHIFTER DIAL** This ergonomically pleasing dial is easy to grip, smoothly turning and landing on each PRND gear while staying in place until its next turn. Standard.

**REMOTE PROXIMITY ENTRY** Keep the key fob in your pocket, open the door, get seated with your foot on the brake, press the Start button and simply shift into Drive. Standard.

**IMPRESSIVE CARGO VOLUME** Grand Cherokee L, with its three rows of seating, offers a wide range of configuration options that are easily deployed. Lower the third row to access 46.9 cu ft of volume, and increase it to 84.6 cu ft when the second row is lowered.



Properly secure all cargo.

AVAILABLE ON  
**3**  
ROW

AVAILABLE ON  
**2**  
ROW

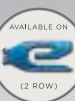
# IN TOUCH WITH THE WORLD

uconnect®



Stay connected and in control of your vehicle from anywhere with access to more services, ranging from safety and security to navigation and entertainment. Personalization is pioneered with up to five user profiles, a customizable home screen and simultaneous dual-phone connectivity. An available 4G LTE Wi-Fi<sup>22</sup> Hotspot provides a strong, fast, lasting connection on the road. Learn more at [driveuconnect.com](http://driveuconnect.com)

10.1-inch touchscreen shown with Apple CarPlay<sup>®7</sup> connected wirelessly to iPhone<sup>®</sup>





uconnect®

THE UCONNECT® 5 SYSTEM offers more connected services and features for ease of use for both novice and expert users alike. This advanced system delivers operating speeds that are five times faster compared to the previous generation. Content-rich and adding greater personalization, Uconnect® 5 helps to make every road trip fun and informed.

- Standard SiriusXM® Radio<sup>23</sup> (6-month Platinum Plan trial)
- Jeep® Connect
- Standard wireless Apple CarPlay<sup>®7</sup> support
- Standard wireless Android Auto<sup>™8</sup> compatibility
- Available TomTom® Traffic & Travel Services<sup>24</sup>

- Available Google Assistant compatibility
- Available Amazon Alexa Built-In<sup>25</sup>
- Available SiriusXM<sup>23</sup> with 360L
- Available HD radio



#### NEW ALEXA BUILT-IN<sup>25</sup>

Ask Alexa to stream music, navigate to points of interest, check the weather, view your calendar, build shopping and to-do lists or answer general questions. Available.



#### START YOUR CAR FROM AFAR

Send destinations, lock the doors, check fuel status and more using the available Jeep<sup>®</sup> Skill for Amazon Alexa<sup>26</sup> or the available Jeep Action on Google on your voice assistant-enabled devices. Available.



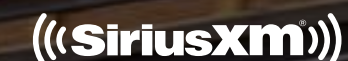
#### NEW TOMTOM<sup>®</sup> NAVIGATION AND CONNECTED TRAFFIC & TRAVEL SERVICES<sup>24</sup>

Connected search, traffic and travel services keep you moving toward your desired destinations. Available.



#### SIRIUSXM<sup>®</sup> RADIO<sup>23</sup>

Tune in and travel well. SiriusXM<sup>®23</sup> connects you with the ultimate entertainment experience, including over 165 channels of commercial-free music, plus sports, news, talk and comedy. 6-month trial. Standard.



#### NEW MAPS OVER THE AIR (MOTA)

Get updates to your navigation system at the push of a button. Available.

#### JEEP<sup>®</sup> CONNECT SERVICES

Enjoy a suite of safety and convenience features, including SOS Call;<sup>27</sup> lock/unlock or start<sup>28</sup> your car from anywhere, and much more. 3-month trial. Standard.



#### NEW UCONNECT<sup>®</sup> 5

The expanded, award-winning Uconnect<sup>®</sup> 5 with its large, full-color, 10.1-inch touchscreen integrates with your smartphone, thanks to Apple CarPlay<sup>7</sup> and Android Auto.<sup>8</sup> Opt for a 4G LTE Wi-Fi Hotspot;<sup>22</sup> and up to eight devices can connect. With greater personalization features and operating speeds five times faster compared to the previous generation, it's the most advanced Uconnect system ever.

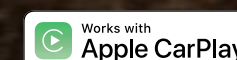
#### NEW SIRIUSXM<sup>23</sup> WITH 360L

Included with your SiriusXM<sup>23</sup> trial, enjoy a personalized experience with on-demand audio, content recommendations and more variety. Available.

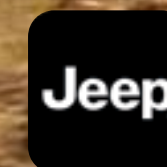


#### PHONE / TEXT

Pair up to eight phones, make calls, use voice commands to hear and respond to texts, select media stations and access navigation. Includes wireless Apple CarPlay<sup>®7</sup> support with your paired iPhone<sup>®</sup> and wireless Android Auto<sup>TM8</sup> compatibility. Standard.

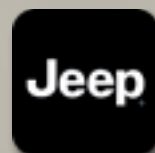


LEARN MORE ABOUT UCONNECT<sup>®</sup> AND RELATED SERVICES AT [DRIVEUCONNECT.COM](http://DRIVEUCONNECT.COM) OR THE JEEP<sup>®</sup> APP;<sup>29</sup>





# CONVENIENCE AT HAND EVERYWHERE YOU GO



**THE ALL-NEW AVAILABLE JEEP® APP<sup>29</sup>** is an essential tool that gives you more control of your vehicle, more convenience in your day, and more peace of mind in and out of the driver's seat.

## REMOTE LOCK

Remotely lock or unlock your vehicle.

## REMOTE VEHICLE START / CANCEL REMOTE START<sup>28</sup>

Start the engine and warm up or cool down the vehicle before entering.

## REMOTE HORN AND LIGHTS

Easily locate the vehicle by remotely sounding the horn and flashing the headlamps.

## VEHICLE FINDER<sup>30</sup>

No more parking lot hunts. If you forget where you parked your car, you can simply tap the vehicle icon in the Jeep® App<sup>29</sup> to find it.

## DEALERSHIP SERVICE SCHEDULING

Enjoy the convenience of online scheduling and instantly make service appointments with ease — including arranging for contactless vehicle pickup and drop-off with participating dealers.





# FREE-SPIRITED

Overland® in Velvet Red Crystal Pearl

CHOOSE FROM TWO GAS-POWERED ENGINES, EACH ENGINEERED TO DELIVER PROVEN CAPABILITIES. THE 3.6L PENTASTAR® V6 ENGINE COMBINES STRENGTH WITH AN EFFICIENT PERFORMANCE, ACHIEVING 293 HP, 260 LB-FT OF TORQUE, AND AN EPA-ESTIMATED 19 CITY / 26 HWY MPG<sup>31</sup> WITH ENGINE STOP / START (ESS) TECHNOLOGY ADDS DESIRED ECONOMIES. THE 5.7L V8 ENGINE OFFERS QUICK AND SMOOTH ACCELERATION, WITH 357 HP, 390 LB-FT OF TORQUE, PLUS THE MAXIMUM TOWING POWER OF UP TO 7,200 LB AND 390 LB-FT OF TORQUE. BOTH ARE PAIRED TO AN 8-SPEED AUTOMATIC TRANSMISSION.



## CLASS-EXCLUSIVE V8 POWERTRAIN<sup>13</sup>

### 5.7L V8 ENGINE

Jeep® Grand Cherokee, equipped with its powerful, available V8 engine, rides above all the rest. This standard powerhouse delivers awe-inspiring capability engineered to take you far, where others only dream of going.

## BEST-IN-CLASS V6 TOWING<sup>13</sup>

### 6,200-LB MAX (3.6L V6 ENGINE)

When properly equipped, Grand Cherokee is powered to bring along the best of your toys. Enjoy available 7,200-lb maximum towing with the brawny 5.7L V8 engine. Available.



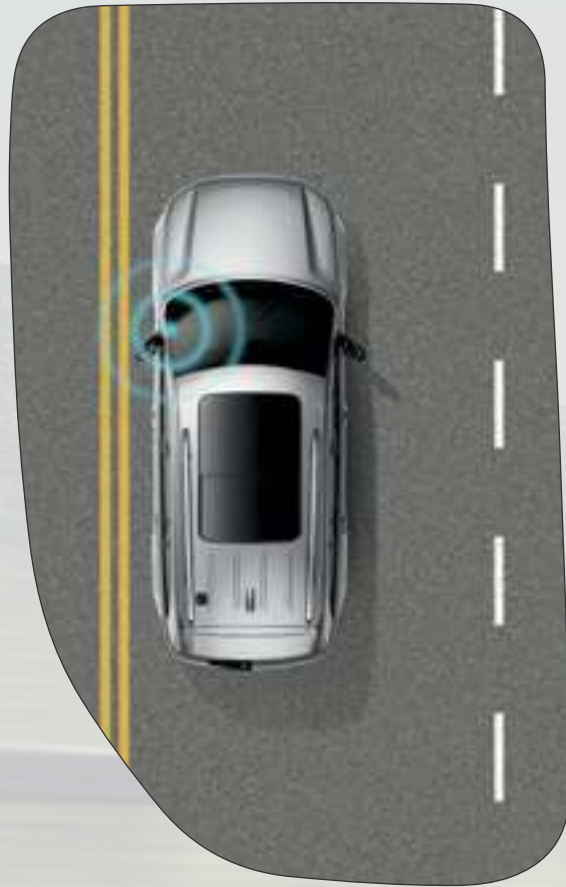
Properly secure all cargo. Always tow within the vehicle's capacity.

# OUTSHINE THE NIGHT

**THE JEEP® GRAND CHEROKEE** helps you successfully navigate a wooded trail or long stretch of highway under the cover of darkness. Automatic headlamps with available automatic headlamp leveling take the guesswork out of lighting your way. Standard LED daytime running lamps add visibility, with stylish variants depending on trim level.

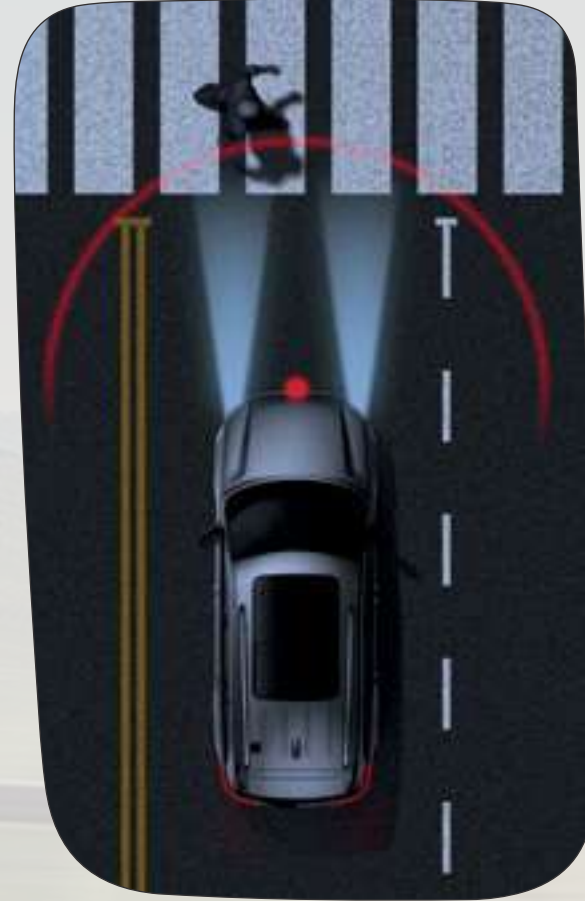
# ACTIVELY ON GUARD SAFETY AND SECURITY

With more standard and available safety and security features than ever before, passengers in all rows benefit from next-generation technology and engineering. Enjoy traveling all roads knowing there are systems in place that are actively working to maintain status quo.



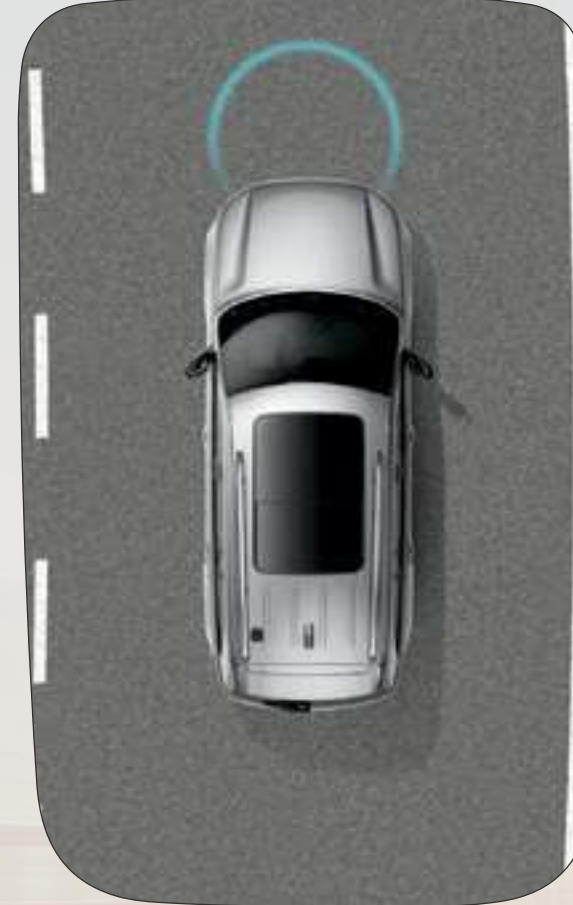
## ACTIVE LANE MANAGEMENT SYSTEM<sup>32</sup>

Provides a visual and audible warning should the vehicle drift outside of lane boundaries. Standard.



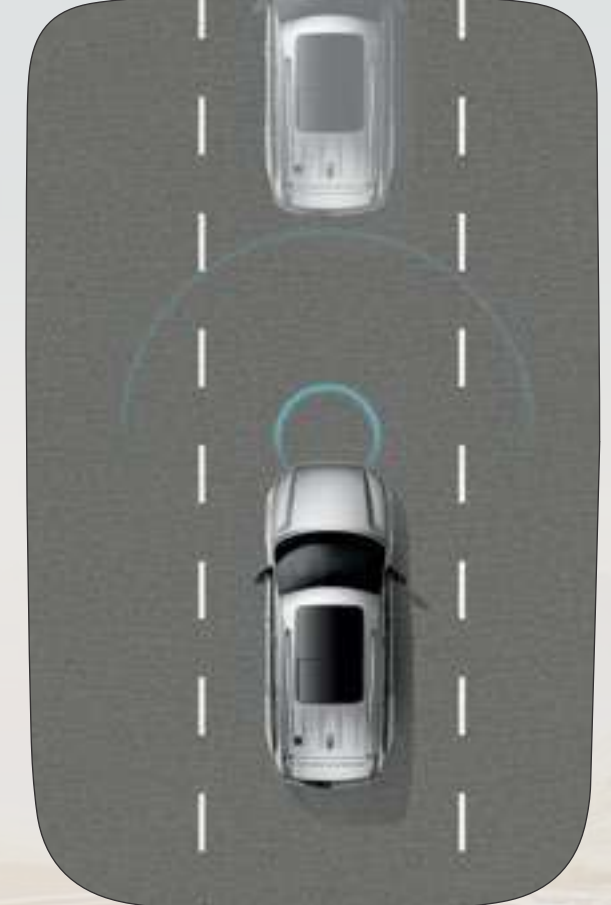
## NEW NIGHT-VISION CAMERA<sup>33</sup>

An infrared eye mounted on the front grille detects pedestrians and animals crossing the vehicle's pathway. The driver is notified in time to take appropriate action. Available.



## NEW ACTIVE DRIVING ASSIST SYSTEM<sup>32</sup>

Helps you simultaneously keep your vehicle centered in its lane, on straightaways and curved roads alike, and maintain a safe distance from others while cruising at a desired speed on divided highways. Available.



## ADAPTIVE CRUISE CONTROL (ACC) WITH STOP AND GO<sup>11</sup>

Take the guesswork out of keeping a safe following distance from the car ahead while cruising on the highway. The system automatically adjusts cruising speed to maintain a preset distance between you and the vehicle ahead and can bring Jeep® Grand Cherokee to a complete stop, without driver intervention, to help avoid a collision. Standard.

**NEW 360° CAMERAS<sup>10</sup>** Your vehicle's entire perimeter is monitored and displayed on your dash touchscreen. These cameras provide a top view, rearview and panorama view to assist you when parking, either manually or automatically. An automatic washer keeps the camera's lens clean. Available.

**FORWARD COLLISION WARNING WITH ACTIVE BRAKING (FCW+)<sup>33</sup>** Sensors detect when Jeep® Grand Cherokee may be approaching another vehicle too rapidly, sending an audible and visual alert to the driver and providing 1.5 seconds of brake assistance if the driver does not react in time. Standard.



PEACE OF MIND  
DRIVES YOU

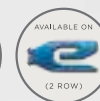
**PARKVIEW® REAR BACK-UP CAMERA<sup>10</sup>**  
Brings previously hidden rear objects to your attention, either on screen or with an audible warning, in good time to react. You can also keep an eye on anything in tow while in motion. Standard.

**BLIND SPOT MONITORING<sup>34</sup> AND REAR CROSS-PATH DETECTION SYSTEM<sup>10</sup>** Monitors the space between you and other drivers, and you're notified when a side or rear blind spot is encroached. Standard.

---

MOST STANDARD  
AND AVAILABLE  
**SAFETY & SECURITY**  
FEATURES IN ITS CLASS<sup>13</sup>

---





DROWSY-DRIVER DETECTION<sup>11</sup>



HEAD-UP DISPLAY



NIGHT-VISION CAMERA<sup>33</sup>

# A FORTRESS BETWEEN YOU AND THE WORLD

NEW TECHNOLOGY AND ENGINEERING USHER YOUR SAFETY AND SECURITY INTO THE FUTURE WITH A LONG LIST OF STANDARD AND AVAILABLE FEATURES ON EVERY JEEP® GRAND CHEROKEE MODEL. YOUR PEACE OF MIND IS ALWAYS TOP OF MIND.



**DROWSY-DRIVER DETECTION<sup>11</sup>** Monitors steering wheel movement and provides an audible alert if the system detects the driver is not correctly handling the wheel. Available.

**HEAD-UP DISPLAY** Drivers can maintain focus on the road ahead with the help of this full-color, 10-inch transparent windshield display. Driving cluster data is projected onto a safe viewing area on the windshield in front of the driver. Available.

**NIGHT-VISION CAMERA<sup>33</sup>** An infrared eye mounted on the front grille detects pedestrians and animals crossing the vehicle's pathway. The driver is notified to take appropriate action. Available.

**STRONG AND LIGHTWEIGHT** The exceptionally solid safety cage pairs high-strength steel and aluminum, making Grand Cherokee lightweight while still providing a very strong foundation. Standard.

**TRAFFIC SIGN RECOGNITION<sup>12</sup>** Detects road signs ahead via a forward-facing camera and provides visual reminders on both your multi-view and Head-Up Displays. Available.

**PARALLEL AND PERPENDICULAR PARK ASSIST<sup>35</sup>** This active guidance system controls steering automatically using ultrasonic sensors that help you ease into parking spots. Includes ParkSense® Front Park Assist<sup>35</sup> sensors. Available.



# 2022 JEEP® GRAND CHEROKEE BUYER'S GUIDE



GRAND CHEROKEE L SUMMIT

GRAND CHEROKEE SUMMIT RESERVE 4xe

GRAND CHEROKEE TRAILHAWK® 4xe

GRAND CHEROKEE LIMITED



SUMMIT

• = Included    0 = Optional    P = Package

	3 ROW	4xe	2 ROW
POWERTRAINS			
3.6L Pentastar® V6 Variable Valve Timing (VVT) Engine with Engine Stop/Start (ESS) Technology, 8-speed Automatic Transmission and 290 Horsepower	•		•
5.7L HEMI® V8 VVT Engine with 8-speed Automatic Transmission and 357 Horsepower (4x4 models only)	0		0
2.0L T4 (Standard-Output) Hybrid Engine with 8-speed Automatic Transmission and 375 Horsepower		•	
CAPABILITY			
Quadra-Drive® II with Rear Electronic Limited-Slip Differential (eLSD) (4x4 models only)	•	•	•
Front-Axle Disconnect (4x4 models only)	•	•	•
Quadra-Lift® Air Suspension System (4x4 models only)	•	•	•
Selec-Terrain® Traction Management System — Console dial with 5 traction control settings: Auto, Sport, Rock, Snow and Sand/Mud (4x4 models only)	•	•	•
SAFETY AND SECURITY			
Forward Collision Warning with Active Braking; <sup>33</sup> Active Lane Management System; <sup>32</sup> Blind Spot Monitoring <sup>34</sup> and Rear Cross-Path Detection System; <sup>10</sup> Drowsy-Driver Detection; <sup>11</sup> Traffic Sign Recognition; <sup>2</sup> Intersection-Collision Assist System; <sup>36</sup> Autonomous Emergency Braking; <sup>33</sup> and Adaptive Cruise Control with Stop and Go <sup>11</sup>	•	•	•
Advanced ProTech Group IV — Rearview auto-dimming digital display mirror, Interior Rear-Facing Camera; <sup>19</sup> Head-Up Display and Night-Vision Pedestrian/Animal Detection <sup>33</sup>	0	0	0
Air Bags <sup>37</sup> — Advanced multistage driver and front-passenger (inflate with a force appropriate to the severity of the frontal or near-frontal impact), advanced side-curtain, advanced supplemental front-seat side, and driver and front-passenger inflatable knee bolsters	•	•	•
Keyless Enter 'n Go™	•	•	•
Passive Entry for Front and Rear Doors	•	•	•
Remote Start System <sup>21</sup>	•	•	•

	3 ROW	4xe	2 ROW
INTERIOR			
Heated 2nd-row Seating	•	•	•
Heated Front-row Seating	•	•	•
Nappa Leather-trimmed Seating	•	•	•
Ventilated Front-row Seating	•	•	•
SiriusXM® Radio <sup>23</sup> — 6-month trial	•	•	•
TomTom® Navigation and Connected Traffic & Travel Services <sup>24</sup>	•	•	•
Apple CarPlay® <sup>7</sup> Support (wireless)	•	•	•
Android Auto™ <sup>8</sup> Compatibility (wireless)	•	•	•
Alpine® Premium Audio System with 9 Speakers, including a Subwoofer	•	•	•
McIntosh® 19-speaker, 825-watt High-Performance Audio System (packaged with Summit Reserve Group)	P	P	P
Wood and Leather-wrapped Steering Wheel	•	•	•
Heated Steering Wheel	•	•	•
CommandView® Dual-Pane Power Panoramic Sunroof	•	•	•
Uconnect® 5 NAV with 10.1-inch Display	•	•	•
Front-Passenger Interactive Screen (packaged with Summit Reserve Group)	P	P	P
High-Definition (HD) Radio	•	•	•
EXTERIOR			
Hands-Free Power Liftgate	•	•	•
Fine Silver Roof Rails	•	•	•
Black-painted Roof	•	•	•

	3 ROW	4xe	2 ROW
POPULAR GROUPS			
Summit Reserve Group — Ventilated rear seats, deluxe headliner, Nappa Reserve door trim, Palermo leather-trimmed seats, 2nd-row window shades, Summit Reserve badging, McIntosh 19-speaker high-performance audio system and 21-inch polished/painted aluminum wheels	0	0	0
Black Appearance Package — Gloss Black and Neutral Grey exterior accents, Gloss Black/Bright roof rails, 21-inch Black-painted aluminum wheels and 275/45R21XL All-Season tires	0	0	0
Trailer Tow Package — Class IV hitch receiver and 7- and 4-pin wiring harness (standard on 4x4 models)	•	•	•
Rear-Seat Video Group I — Amazon Fire TV Built-In; <sup>20</sup> seatback video screens and video USB port <sup>38</sup>	0	0	0
Luxury Tech Group V — Window shades for 2nd row and wireless charging pad	0	0	0



Summit 2 Row



Summit Reserve 4xe



Summit Reserve 3 Row



OVERLAND®

• = Included    0 = Optional    P = Package

	3 ROW	4xe	2 ROW
POWERTRAINS			
3.6L Pentastar® V6 Variable Valve Timing (VVT) Engine with Engine Stop/Start (ESS) Technology, 8-speed Automatic Transmission and 290 Horsepower	•		•
5.7L HEMI® V8 VVT Engine with 8-speed Automatic Transmission and 357 Horsepower (4x4 models only)	0		0
2.0L T4 (Standard-Output) Hybrid Engine with 8-speed Automatic Transmission and 375 Horsepower		•	
CAPABILITY			
Quadra-Trac II® Active Four-Wheel-Drive (4WD) System — Includes 2-speed transfer case (4x4 models only)	•	•	•
Front-Axle Disconnect (4x4 models only)	•	•	•
Quadra-Lift® Air Suspension System (4x4 models only)	•	•	•
Selec-Terrain® Traction Management System — Console dial with 5 traction control settings: Auto, Sport, Rock, Snow and Sand/Mud (4x4 models only)	•	•	•
SAFETY AND SECURITY			
Forward Collision Warning with Active Braking, <sup>33</sup> Active Lane Management System, <sup>32</sup> Blind Spot Monitoring <sup>34</sup> and Rear Cross-Path Detection System, <sup>10</sup> Autonomous Emergency Braking, <sup>33</sup> Adaptive Cruise Control with Stop and Go, <sup>11</sup> and Auto High-Beam Headlamp Control	•	•	•
Advanced ProTech Group III — ParkView® Rear Back-Up Camera, <sup>10</sup> Interior Rear-Facing Camera, <sup>19</sup> Map-in-Cluster Display, Head-Up Display, Active Driving Assist System, <sup>32</sup> 360° Surround-View Camera System, <sup>10</sup> Integrated Off-Road Camera, <sup>10</sup> Night-Vision Pedestrian/Animal Detection <sup>33</sup> and Intersection-Collision Assist System <sup>36</sup>	0	0	0
Air Bags <sup>37</sup> — Advanced multistage driver and front-passenger (inflate with a force appropriate to the severity of the frontal or near-frontal impact), advanced side-curtain, advanced supplemental front-seat side, and driver and front-passenger inflatable knee bolsters	•	•	•
Keyless Enter 'n Go™	•	•	•
Passive Entry for Front and Rear Doors	•	•	•
Remote Start System <sup>21</sup>	•	•	•

	3 ROW	4xe	2 ROW
INTERIOR			
Heated 2nd-row Seating	•	•	•
Heated Front-row Seating	•	•	•
Nappa Leather-trimmed Seating	•	•	•
Ventilated Front-row Seating	•	•	•
SiriusXM® Radio <sup>23</sup> — 6-month trial	•	•	•
TomTom® Navigation and Connected Traffic & Travel Services <sup>24</sup>	•	•	•
Apple CarPlay® <sup>7</sup> Support (wireless)	•	•	•
Android Auto™ <sup>8</sup> Compatibility (wireless)	•	•	•
Alpine® Premium Audio System with 9 Speakers, including a Subwoofer	•	•	•
McIntosh® 19-speaker, 825-watt High-Performance Audio System (packaged with Uconnect® 5 NAV with 10.1-inch display)	P	P	P
Leather-wrapped Steering Wheel	•	•	•
Heated Steering Wheel	•	•	•
CommandView® Dual-Pane Power Panoramic Sunroof	•	•	•
Uconnect 5 NAV with 8.4-inch Display	•	•	•
Uconnect 5 NAV with 10.1-inch Display	0	0	0
Front-Passenger Interactive Screen	0	0	0
High-Definition (HD) Radio	•	•	•
EXTERIOR			
Hands-Free Power Liftgate	•	•	•
Gloss Black/Bright Roof Rails	•	•	•
Black-painted Roof	0	0	0

	3 ROW	4xe	2 ROW
POPULAR GROUPS			
Off-Road Group — Rear Electronic Limited-Slip Differential, skid plates for fuel tank, transfer case and front suspension, Trail Rated® badge, P265/60R16 All-Season tires and 18-inch polished/painted aluminum wheels (4x4 models only)	0	0	0
Trailer Tow Package — Class IV hitch receiver and 7- and 4-pin wiring harness (standard on 4x4 models)	•	•	•
Rear-Seat Video Group I — Amazon Fire TV Built-In, <sup>20</sup> seatback video screens and video USB port <sup>38</sup>	0	0	0
Luxury Tech Group IV — Passenger-seat memory, power seatback massage for driver and front passenger, Nappa leather-trimmed seats, 12-way power adjust for driver and front passenger, rearview auto-dimming digital display mirror, 4-Zone Automatic Temperature Control, window shades for 2nd row and wireless charging pad	0	0	0



Overland® 2 Row



Overland 4xe



Overland 3 Row

LIMITED

LIMITED

• = Included    0 = Optional    P = Package

	3 ROW	4xe	2 ROW
POWERTRAINS			
3.6L Pentastar® V6 Variable Valve Timing (VVT) Engine with Engine Stop/Start (ESS) Technology, 8-speed Automatic Transmission and 290 Horsepower	•		•
2.0L T4 (Standard-Output) Hybrid Engine with 8-speed Automatic Transmission and 375 Horsepower		•	
CAPABILITY			
Quadra-Trac I® Full-Time Single-Speed Active Transfer Case Four-Wheel-Drive (4WD) System (4x4 models only)	•		•
Quadra-Trac II® Active 4WD System — Includes 2-speed transfer case (4x4 models only)		•	
Front-Axle Disconnect (4x4 models only)	•	•	•
Selec-Terrain® Traction Management System — Console dial with 5 traction control settings: Auto, Sport, Rock, Snow and Sand/Mud (4x4 models only)	•	•	•
SAFETY AND SECURITY			
Forward Collision Warning with Active Braking; <sup>33</sup> Active Lane Management System; <sup>32</sup> Blind Spot Monitoring; <sup>34</sup> and Rear Cross-Path Detection System; <sup>10</sup> Autonomous Emergency Braking; <sup>33</sup> Adaptive Cruise Control with Stop and Go; <sup>11</sup> and Auto High-Beam Headlamp Control	•	•	•
Air Bags <sup>37</sup> — Advanced multistage driver and front-passenger (inflate with a force appropriate to the severity of the frontal or near-frontal impact), advanced side-curtain, advanced supplemental front-seat side, and driver and front-passenger inflatable knee bolsters	•	•	•
Keyless Enter 'n Go™	•	•	•
Passive Entry for Front and Rear Doors (packaged with Luxury Tech Group II)	P	P	P
Remote Start System <sup>21</sup>	•	•	•

	3 ROW	4xe	2 ROW
INTERIOR			
Heated 2nd-row Seating	•	•	•
Heated Front-row Seating	•	•	•
Capri Leather/Suede Seating	•	•	•
Ventilated Front-row Seating (Packaged with Luxury Tech Group II)	0	0	0
SiriusXM® Radio <sup>23</sup> — 6-month trial	•	•	•
TomTom® Navigation and Connected Traffic & Travel Services <sup>24</sup>	•	•	•
Apple CarPlay® <sup>7</sup> Support (wireless)	•	•	•
Android Auto™ <sup>8</sup> Compatibility (wireless)	•	•	•
6 Premium Speakers with Active Noise Control	•		•
Alpine® Premium Audio System with 9 Speakers, including a Subwoofer (packaged with Uconnect® 5 NAV with 10.1-inch display)	P	•	P
Leather-wrapped Steering Wheel	•	•	•
Heated Steering Wheel	•	•	•
CommandView® Dual-Pane Power Panoramic Sunroof	0	0	0
Uconnect 5 with 8.4-inch Display	•	•	•
Uconnect 5 NAV with 10.1-inch Display	0	0	0
Front-Passenger Interactive Display (packaged with Uconnect 5 NAV with 10.1-inch display)		P	
High-Definition (HD) Radio (packaged with Uconnect 5 NAV with 10.1-inch display)	P	P	P
EXTERIOR			
Power Liftgate	•	•	•
Molded-in-Color Black/Bright Roof Rails	•	•	•
Molded-in-Color Black/Gloss Black Roof Rails (packaged with Black Appearance Package)	P	P	P

	3 ROW	4xe	2 ROW
POPULAR GROUPS			
Black Appearance Package — Gloss Black exterior accents, molded-in-color/Gloss Black roof rails, 20-inch Gloss Black-painted wheels and 265/50R20 BSW All-Season LRR tires	0	0	0
Trailer Tow Package — Class IV hitch receiver, 7- and 4-pin wiring harness, automatic headlamp leveling, rear load-leveling suspension (not available on 4xe), full-size spare tire, trailer hitch zoom, 220-amp alternator and heavy-duty cooling	0	0	0
Rear-Seat Video Group I — Amazon Fire TV Built-In; <sup>20</sup> seatback video screens and video USB port <sup>38</sup>	0	0	0
Luxury Tech Group II — Ventilated front seats, Capri leather-trimmed seats, memory steering column, rear back-up camera <sup>10</sup> washer, auto-dimming exterior driver mirror, passive entry for front/rear doors and liftgate, rearview auto-dimming digital display mirror, window shades for 2nd row, wireless charging pad, rain-sensing windshield wipers, power/tilt telescoping steering column, 360° Surround-View Camera System, <sup>10</sup> ParkSense® Front/Rear Park Assist with Stop <sup>35</sup> and Intersection-Collision Assist System <sup>36</sup>	0	0	0



Limited 2 Row



Limited 4xe



Limited 3 Row



TRAILHAWK®

• = Included    0 = Optional    P = Package

	4xe	2 ROW
POWERTRAINS		
3.6L Pentastar® V6 Variable Valve Timing (VVT) Engine with Engine Stop/Start (ESS) Technology, 8-speed Automatic Transmission and 290 Horsepower		•
5.7L HEMI® V8 VVT Engine with 8-speed Automatic Transmission and 357 Horsepower		0
2.0L T4 (Standard-Output) Hybrid Engine with 8-speed Automatic Transmission and 375 Horsepower	•	
CAPABILITY		
Quadra-Drive® II with Rear Electronic Limited-Slip Differential (eLSD) Four-Wheel-Drive (4WD) System — Includes 2-speed transfer case	•	•
Front-Axle Disconnect	•	•
Quadra-Lift® Air Suspension System	•	•
Selec-Terrain® Traction Management System — Console dial with 5 traction control settings: Auto, Sport, Rock, Snow and Sand/Mud	•	•
SAFETY AND SECURITY		
Forward Collision Warning with Active Braking; <sup>33</sup> Active Lane Management System; <sup>32</sup> Blind Spot Monitoring <sup>34</sup> and Rear Cross-Path Detection System; <sup>10</sup> Autonomous Emergency Braking; <sup>33</sup> and Adaptive Cruise Control with Stop and Go <sup>11</sup>	•	•
Advanced ProTech Group II — ParkSense® Front/Rear Park Assist with Stop; <sup>35</sup> 360° Surround-View Camera System; <sup>10</sup> Night-Vision Pedestrian/Animal Detection <sup>33</sup> and Intersection-Collision Assist System <sup>36</sup>	0	0
Air Bags <sup>37</sup> — Advanced multistage driver and front-passenger (inflate with a force appropriate to the severity of the frontal or near-frontal impact), advanced side-curtain, advanced supplemental front-seat side, and driver and front-passenger inflatable knee bolsters	•	•
Keyless Enter 'n Go™	•	•
Passive Entry for Front and Rear Doors (packaged with Luxury Tech Group III)	P	P
Remote Start System <sup>21</sup>	•	•

	4xe	2 ROW
INTERIOR		
Heated 2nd-row Seating	•	•
Heated Front-row Seating	•	•
Capri Leather/Suede Seating	•	•
Ventilated Front-row Seating	•	•
SiriusXM® Radio <sup>23</sup> — 6-month trial	•	•
TomTom® Navigation and Connected Traffic & Travel Services <sup>24</sup>	•	•
Apple CarPlay® <sup>7</sup> Support (wireless)	•	•
Android Auto™ <sup>8</sup> Compatibility (wireless)	•	•
Alpine® Premium Audio System with 9 Speakers, including a Subwoofer	•	•
Leather-wrapped Steering Wheel	•	•
Heated Steering Wheel	•	•
CommandView® Dual-Pane Power Panoramic Sunroof	0	0
Uconnect® 5 NAV with 8.4-inch Display	•	•
Uconnect 5 NAV with 10.1-inch Display	0	0
Front-Passenger Interactive Display (packaged with Uconnect 5 NAV with 10.1-inch display)	P	0
High-Definition (HD) Radio (packaged with Uconnect 5 NAV with 8.4-inch or 10.1-inch display)	P	P
EXTERIOR		
Power Liftgate	•	•
Hands-Free Power Liftgate (packaged with Luxury Group III)	P	P
Molded-in-Color Black/Neutral Gray Roof Rails	•	•
Black-painted Roof	•	•

	4xe	2 ROW
POPULAR GROUPS		
Trailer Tow Package — Class IV hitch receiver and 7- and 4-pin wiring harness	•	•
Rear-Seat Video Group I — Amazon Fire TV Built-In; <sup>20</sup> seatback video screens and video USB port <sup>38</sup>	0	0
Luxury Tech Group III — Memory steering column, passive entry for front/rear doors and liftgate, rearview auto-dimming digital display mirror, window shades for 2nd row, wireless charging pad, hands-free power liftgate, rain-sensing windshield wipers and power/tilt telescoping steering column	0	0



Trailhawk® 2 Row



Trailhawk 4xe

LAREDO

LAREDO

• = Included    0 = Optional    P = Package

	3 ROW	2 ROW
POWERTRAIN		
3.6L Pentastar® V6 Variable Valve Timing (VVT) Engine with Engine Stop/Start (ESS) Technology, 8-speed Automatic Transmission and 290 Horsepower	•	•
CAPABILITY		
Quadra-Trac I® Full-Time Single-Speed Active Transfer Case Four-Wheel-Drive (4WD) System (4x4 models only)	•	•
Front-Axle Disconnect (4x4 models only)	•	•
SAFETY AND SECURITY		
Forward Collision Warning with Active Braking, <sup>33</sup> Active Lane Management System, <sup>32</sup> Blind Spot Monitoring <sup>34</sup> and Rear Cross-Path Detection System, <sup>10</sup> Autonomous Emergency Braking, <sup>33</sup> and Adaptive Cruise Control with Stop and Go <sup>11</sup>	•	•
Air Bags <sup>37</sup> — Advanced multistage driver and front-passenger (inflate with a force appropriate to the severity of the frontal or near-frontal impact), advanced side-curtain, advanced supplemental front-seat side, and driver and front-passenger inflatable knee bolsters	•	•
Keyless Enter 'n Go™	•	•
Remote Start System <sup>21</sup> (packaged with Luxury Tech Group I and Altitude Package)	P	P
INTERIOR		
Cloth Seating	•	•
Heated Front Seating (packaged with Luxury Tech Group I)	P	P
SiriusXM® Radio <sup>23</sup> — 6-month trial (packaged with Luxury Tech Group I)	P	P
Apple CarPlay® <sup>7</sup> Support (wireless)	•	•
Android Auto™ <sup>8</sup> Compatibility (wireless)	•	•
6 Speakers	•	•
Technoleather Steering Wheel	•	•
Leather-wrapped Steering Wheel (packaged with heated steering wheel)	P	P

	3 ROW	2 ROW
INTERIOR (CONTINUED)		
Heated Steering Wheel (packaged with Luxury Tech Group I and Altitude Package)	P	P
Power with Express-Open/Close Sunroof	0	0
Uconnect® 5 with 8.4-inch Display	•	•
EXTERIOR		
Power Liftgate (packaged with Luxury Group I and Altitude Appearance Package)	P	P
Molded-in-Color Black/Bright Roof Rails	•	•
Molded-in-Color Black/Gloss Black Roof Rails (packaged with Black Appearance Package)	P	P
POPULAR GROUPS		
Trailer Tow Package — Class IV hitch receiver, 7- and 4-pin wiring harness, automatic headlamp leveling, rear load-leveling suspension, full-size spare tire, trailer hitch zoom, 180-amp alternator and heavy-duty cooling	0	0
Altitude Package — Black headliner, leather-trimmed bucket seats, molded-in-color Black/Gloss Black roof rails, Gloss Black exterior accents, Remote Start System, <sup>21</sup> power liftgate, heated steering wheel, 115-volt auxiliary power outlet, wireless charging pad, rain-sensing windshield wipers, heated front seats, Laredo Badge Delete, selectable tire-fill alert, secondary active grille shutters, 3rd-row charge-only USB port <sup>38</sup> (75 only), 265/50R20 BSW All-Season LRR tires and 20-inch Gloss Black-painted aluminum wheels	0	0
Luxury Tech Group I — Remote Start System, <sup>21</sup> power liftgate, heated steering wheel, 115-volt auxiliary power outlet, wireless charging pad, rain-sensing windshield wipers, heated front seats and selectable tire-fill alert; also includes secondary active grille shutters on 74 4x4 models only and includes 3rd-row charge-only USB port <sup>38</sup> on 75 models only	0	0



Laredo 2 Row



Laredo 3 Row

# WHEELS

## GRAND CHEROKEE L



18-Inch Fully Painted Aluminum  
Laredo (Standard)  
(WBA)



18-Inch Fully Painted Aluminum  
Limited (Standard)  
(WK3)



20-Inch Polished / Painted Aluminum  
Limited (Available)  
(WHC)



20-Inch Fully Polished Aluminum  
Overland® (Standard)  
(WLJ)



18-Inch Polished / Painted Aluminum  
Packaged with Off-Road Group  
on Overland (Available)  
(WLH)



20-Inch Fully Painted Silver Aluminum  
Summit (Standard)  
(WHA)



21-Inch Polished / Painted Aluminum  
Summit Reserve (Standard)  
(WJE)



20-Inch Gloss Black-Painted Aluminum  
Altitude (Standard)  
(WHF)

# WHEELS

## GRAND CHEROKEE



17-Inch Fully Painted Aluminum  
Laredo (Standard)  
(WF5)



18-Inch Fully Painted Aluminum  
Laredo (Available)  
(WBA)



18-Inch Fully Painted Aluminum  
Limited (Standard)  
(WK3)



20-Inch Polished / Painted Aluminum  
Limited (Available)  
(WHC)



18-Inch Polished / Painted Aluminum  
Trailhawk® (Standard)  
(WBE)



20-Inch Fully Polished Aluminum  
Overland® (Standard)  
(WLJ)



18-Inch Polished / Painted Aluminum  
Packaged with Off-Road Group  
on Overland (Available)  
(WLH)



20-Inch Fully Painted Silver Aluminum  
Summit (Standard)  
(WHH)



21-Inch Polished / Painted Aluminum  
Summit Reserve (Standard)  
(WJA)



20-Inch Gloss Black-Painted Aluminum  
Altitude (Standard)  
(WHF)

# WHEELS

## GRAND CHEROKEE 4xe



18-Inch Fully Painted Aluminum  
Limited (Standard)  
(WJR)



20-Inch Polished / Painted Aluminum  
Limited (Available)  
(WHC)



18-Inch Polished / Painted Aluminum  
Trailhawk® (Standard)  
(WBD)



20-Inch Fully Polished Aluminum  
Overland® (Standard)  
(WLJ)



18-Inch Polished / Painted Aluminum  
Packaged with Off-Road Group  
on Overland (Available)  
(WLH)



20-Inch Polished / Painted Aluminum  
Summit (Standard)  
(WHH)



21-Inch Polished / Painted Aluminum  
Summit Reserve (Standard)  
(WJA)

# INTERIORS GRAND CHEROKEE L



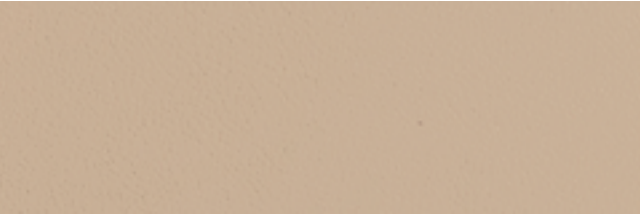
Essence Cloth — Black  
Laredo (Standard)



Capri Leather and Perforated Suede with Light Tungsten accent stitching — Black  
Altitude (Standard)



Capri Leather with Light Tungsten accent stitching — Black  
Limited (Standard)



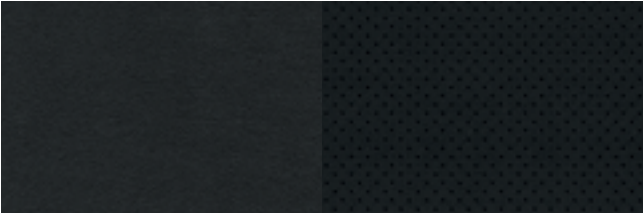
Capri Leather with Light Tungsten accent stitching — Wicker Beige  
Limited (Standard)



Ventilated Capri Leather with Light Tungsten accent stitching — Black  
Packaged with Luxury Tech Group II on Limited (Available)



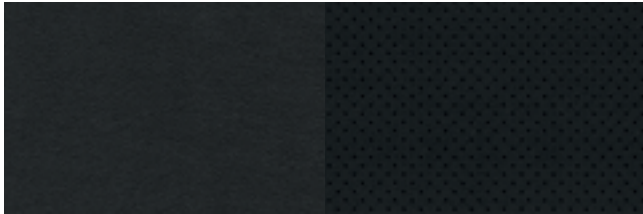
Ventilated Capri Leather with Light Tungsten accent stitching — Wicker Beige  
Packaged with Luxury Tech Group II on Limited (Available)



Ventilated Nappa Leather with Light Tungsten accent stitching — Black  
Overland® (Standard)



Ventilated Nappa Leather with Cognac accent stitching — Steel Grey  
Overland (Standard)



Ventilated Nappa Leather with Nappa Leather Bolsters and Cognac accent stitching — Black  
Summit (Standard)



Ventilated Nappa Leather with Nappa Leather Bolsters and Cognac accent stitching — Steel Grey  
Summit (Standard)



Ventilated Nappa Leather with Nappa Leather Bolsters and Cognac accent stitching — Tupelo  
Summit (Standard)



Ventilated Palermo Leather with Quilted Palermo Leather Bolsters and Cognac accent stitching — Black  
Summit Reserve (Standard)



Ventilated Palermo Leather with Quilted Palermo Leather Bolsters and Cognac accent stitching — Tupelo  
Summit Reserve (Standard)

# INTERIORS GRAND CHEROKEE



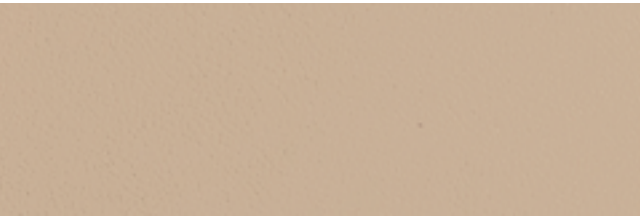
Essence Cloth — Black  
Laredo (Standard)



Capri Leather and Perforated Suede with Light Tungsten accent stitching — Black  
Altitude (Standard)



Capri Leather with Light Tungsten accent stitching — Black  
Limited (Standard)



Capri Leather with Light Tungsten accent stitching — Wicker Beige  
Limited (Standard)



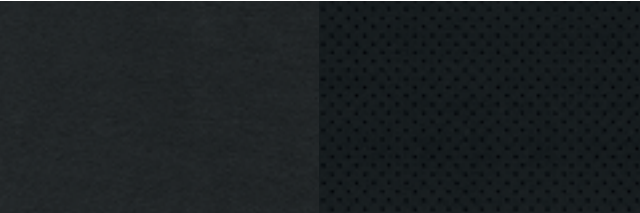
Ventilated Capri Leather with Light Tungsten accent stitching — Black  
Packaged with Luxury Tech Group II on Limited (Available)



Ventilated Capri Leather with Light Tungsten accent stitching — Wicker Beige  
Packaged with Luxury Tech Group II on Limited (Available)



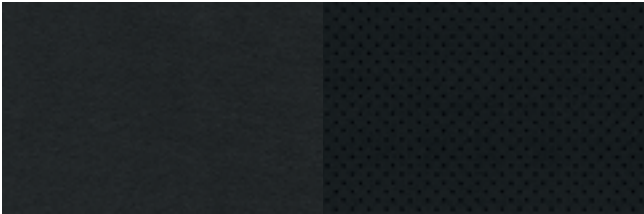
Capri Leather and Ventilated Suede with Rubicon® Red accent stitching — Black  
Trailhawk® (Standard)



Ventilated Nappa Leather with Light Tungsten accent stitching — Black  
Overland® (Standard)



Ventilated Nappa Leather with Cognac accent stitching — Steel Grey  
Overland (Standard)



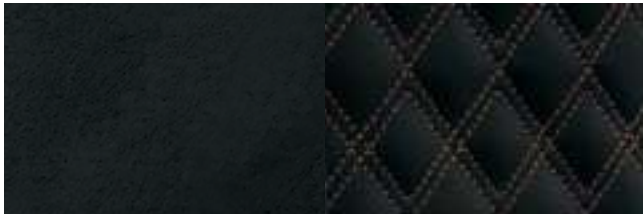
Ventilated Nappa Leather with Nappa Leather Bolsters and Cognac accent stitching — Black  
Summit (Standard)



Ventilated Nappa Leather with Nappa Leather Bolsters and Cognac accent stitching — Steel Grey  
Summit (Standard)



Ventilated Nappa Leather with Nappa Leather Bolsters and Cognac accent stitching — Tupelo  
Summit (Standard)



Ventilated Palermo Leather with Quilted Palermo Leather Bolsters and Cognac accent stitching — Black  
Summit Reserve (Standard)

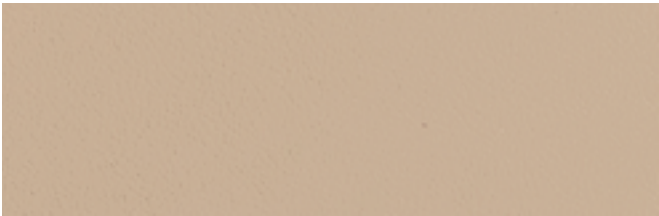


Ventilated Palermo Leather with Quilted Palermo Leather Bolsters and Cognac accent stitching — Tupelo  
Summit Reserve (Standard)

# INTERIORS GRAND CHEROKEE 4xe



Capri Leather with Light Tungsten accent stitching — Black Limited (Standard)



Capri Leather with Light Tungsten accent stitching — Wicker Beige Limited (Standard)



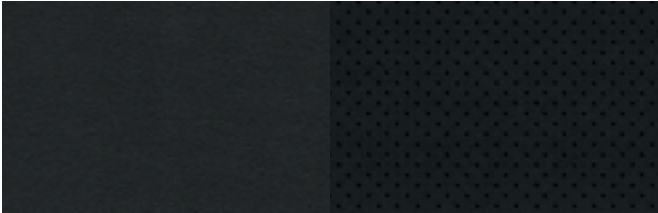
Ventilated Capri Leather with Light Tungsten accent stitching — Black Packaged with Luxury Tech Group II on Limited (Available)



Ventilated Capri Leather with Light Tungsten accent stitching — Wicker Beige Packaged with Luxury Tech Group II on Limited (Available)



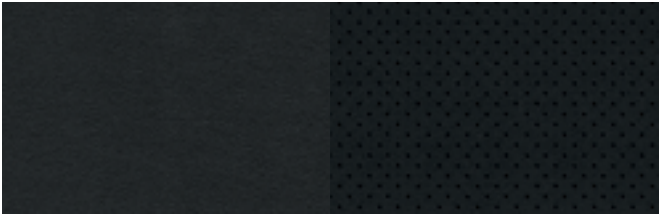
Capri Leather and Ventilated Suede with Surf Blue accent stitching — Black Trailhawk® (Standard)



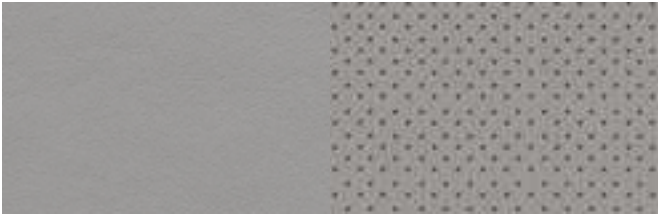
Ventilated Nappa Leather with Light Tungsten accent stitching — Black Overland® (Standard)



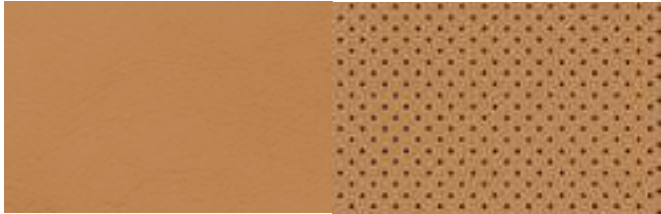
Ventilated Nappa Leather with Cognac accent stitching — Steel Grey Overland (Standard)



Ventilated Nappa Leather with Nappa Leather Bolsters and Cognac accent stitching — Black Summit (Standard)



Ventilated Nappa Leather with Nappa Leather Bolsters and Cognac accent stitching — Steel Grey Summit (Standard)



Ventilated Nappa Leather with Nappa Leather Bolsters and Cognac accent stitching — Tupelo Summit (Standard)



Ventilated Palermo Leather with Quilted Palermo Leather Bolsters and Cognac accent stitching — Black Summit Reserve (Standard)



Ventilated Palermo Leather with Quilted Palermo Leather Bolsters and Cognac accent stitching — Tupelo Summit Reserve (Standard)

# SPECIFICATIONS

## EXTERIOR DIMENSIONS (inches unless noted otherwise)

	3 Row	2 Row / 4xe
Wheelbase	121.7	116.7
Overall Length	204.9	193.4
Overall Width (at mirrors)	84.6	84.6
Track (front / rear)	65.4	65.4
Overall Height	71.5	70.7
Running Ground Clearance		
(standard suspension / air suspension; Pos#2)	8.5 / 10.9	8.0 / 10.3
Approach Angle (deg; standard suspension / air suspension		
(Overland, <sup>®</sup> Pos#2) / air suspension (Summit, Pos#2))	20.6 / 30.1 / 28.2	24 / 27.3 / 33.8
Breakover Angle (deg; standard suspension /		
air suspension (Pos#2))	21.5 / 23.6	16.3 / 16.1 / 20.9
Departure Angle (deg; standard suspension /		
air suspension (Pos#2))	21.5 / 23.6	26.3 / 24.9 / 28.2
Water Fording Depth <sup>17</sup>	up to 24	N/A

## INTERIOR DIMENSIONS

(inches unless noted otherwise, front / rear)

Seating Capacity	up to 7	up to 5
Head Room	9.8 / 39.9 / 37.3	39.9 / 39.4
Leg Room	41.3 / 39.4 / 30.3	41.3 / 38.2
Shoulder Room	59.2 / 58 / 51.9	59.2 / 58.0
Hip Room	57.4 / 56.3 / 42.9	57.4 / 56.3
Cargo Volume — Behind first row (cu ft)	84.6	70.8
Cargo Volume — Behind second row (cu ft)	46.9	37.7
Cargo Volume — Behind third row (cu ft)	17.2	N/A

## CAPACITIES / WEIGHTS (lb unless noted otherwise)

Fuel Tank Capacity (gal)	23	23 / 19
3.6L Pentastar <sup>®</sup> V6 (4x2 / 4x4)	4,618 / 4,746	4,238 / 4,365
5.7L HEMI <sup>®</sup> V8 (4x4)	5,330	4,995
Payload Capacity, max / min		
(with all occupants and cargo)	1,410 / 1,210	1,280 / 1,140
Gross Vehicle Weight Rating (GVWR; 2WD / 4WD)		
3.6L Pentastar V6 Engine	6,500 / 6,500 and 6,700	
	on Overland / Summit	
5.7L V8 Engine	6,900	

## BRAKE SYSTEM

- Technology applications — eBoost actuation and Electric Park Brake (EPB)
  - Supports advanced features:
    - Autohold (Hold and Go) — Holds with foot removed at stop
    - Safehold — Holds when driver exits vehicle in a Drive gear
    - Adaptive Cruise Control (ACC) with Stop and Go<sup>11</sup> — Autonomous stop and hold
- Front: 74 / 75: 17 – 18-inch Brakes — 4-Wheel Disc, Antilock 13.94 x 1.10 Vented  
74 / 75 18-inch Brakes — 4-Wheel Disc, Antilock 13.94 x 1.10 Vented  
WL74 / WL75 / Plug-in Hybrid Electric Vehicle (PHEV) 18-inch Brakes — 4-Wheel Disc, Antilock (Ferritic Nitro-Carburization (FNC) rotors) disc 13.94 x 1.10 Vented / FNC  
FNC is the introduction of an extremely hard nitride layer on the surface of the brake rotor through a high temperature heat treatment while in the presence of nitrogen.  
The Nitride layer provides:
- Improved corrosion resistance
  - Reduced “lot rot” vibration
  - Improved appearance
  - Reduced wear / dust
  - More consistent frictional properties

Rear: 74 / 75: 17 – 18-inch Brakes — 4-Wheel Disc, Antilock 12.80 x .55 Solid  
74 / 75 18-inch Brakes — 4-Wheel Disc, Antilock 5.7L V8 13.78 x 0.87 Vented  
WL74 / WL75 / PHEV 18-inch Brakes — 4-Wheel Disc, Antilock (FNC rotors) 13.78 x 0.87 Vented / FNC  
WL74 / WL75 / PHEV 20-inch Brakes 13.78 x 0.87 Vented

**FUEL SAVER TECHNOLOGY** — Deactivates 4 cylinders during steady-speed cruising, low acceleration or shallow-grade climbing conditions (5.7L)

**VARIABLE VALVE TIMING** — Increases engine breathing by varying the degree the valves open and close in conjunction with the piston position, resulting in better performance, more efficient operation, and increased torque for towing and hauling (3.6L and 5.7L)

**TRANSMISSION** — Driver-interactive manual control and electronically modulated torque converter clutch

**SUSPENSION** — Front: Multi-link independent front suspension, coil springs, gas-charged, twin-tube coilover shock absorbers, all-aluminum arms and knuckles. Rear: Multi-link rear suspension, coil spring, twin-tube shocks (including load leveling for towing), all-aluminum arms and knuckles (including extruded aluminum spring links)

<b>STEERING</b> — Electric rack and pinion	
Overall Ratio	16.9:1 (V6 4x2); 15.6:1 (all other vehicles)
Turns, lock-to-lock	2.9 (V6 4x2), 3.0 (all other vehicles)
Turning Diameter (ft), curb-to-curb	38.3

**BODY DESIGN** — Steel uniframe construction

## POWERTRAINS

Engine	3.6L Pentastar V6 with Variable Valve Timing (VVT)	5.7L V8 with Fuel Saver Technology and VVT	2.0L GME-T4
Displacement (cu in)	220	345	221
Horsepower (HP @ rpm)	290 @ 6,400	357 @ 5,150	270 @ 5,250
Torque (SAE net lb-ft @ rpm)	257 @ 4,000	390 @ 4,250	295 @ 3,000
Axle Ratio	3.45:1	3.09:1	3.70:1
Fuel Injection System	Sequential, multipoint, electronic, returnless	Sequential, multipoint, electronic, returnless	Direct Injection



## TOWING DATA

(lb, 2WD / 4WD)

Maximum Trailer Weight Rating when properly equipped

3.6L Pentastar V6 Engine	6,200 / 6,200
5.7L V8 Engine	N / A / 7,200

RESTRICTION: Trailer frontal area limitation of 64 sq ft; maximum trailer length of 30 ft (Class IV); Trailer Sway Control<sup>39</sup> and low-profile mirrors are recommended. This chart is meant to serve as a quick reference guide on how to properly equip your Grand Cherokee for towing. For specific details, discuss your plans with your Jeep<sup>®</sup> Brand dealer, who will help select the right equipment to meet your specifications.



# EXTERIOR COLORS



BRIGHT WHITE



VELVET RED  
CRYSTAL PEARL



ROCKY MOUNTAIN



DIAMOND BLACK  
CRYSTAL PEARL



MIDNIGHT SKY



HYDRO BLUE



EMBER



SILVER ZYNITH



BALTIC GREY



## AUTHENTIC JEEP® BRAND VEHICLE ACCESSORIES

When it comes to your Jeep® Grand Cherokee, not all parts and accessories are created equal. As the official service, parts and customer care provider for the Jeep® Brand, only Mopar® Parts and Accessories can ensure the proper fit, finish and functionality. That's because they're original equipment, engineered by the same people who designed your vehicle, which means you can personalize your ride with complete confidence.

Mopar is also more than parts and accessories. We're here to help you properly maintain and care for your vehicle. Our certified technicians are trained to know your vehicle best, and our Mopar Express Lane service departments are set up to get you in, out and back on the road. From parts and accessories to expert service and more, always be sure to choose Mopar.

Learn more at [mopar.com](https://mopar.com)



Jeep® Grand Cherokee L Laredo in Velvet Red Crystal Pearl features Black Side Steps, Black License Plate Frame, 21-inch Mopar® Unique Wheels, Mopar Center Caps, Front and Rear Splash Guards, Roof Rack Crossbars, Cargo Box, Hitch Receiver, Hitch Ball-Mount Adapter and Hitch Ball



Door Sill Guards<sup>40</sup>



Cargo Liner<sup>40</sup>  
Properly secure all cargo.



All-Weather Floor Mats<sup>40</sup>



Overhead DVD System<sup>40</sup>

# OWNER SUPPORT

THE JEEP® BRAND IS PROUD TO OFFER  
SOME OF THE BEST OWNERSHIP SUPPORT  
PROGRAMS AVAILABLE ANYWHERE.

**5 YEAR / 60,000 MILE**  
**POWERTRAIN LIMITED WARRANTY**

**WARRANTIES** Jeep® Brand vehicles are covered by a 3-Year/36,000-Mile Basic Limited Warranty<sup>41</sup> (excludes normal maintenance and wear items), as well as a 5-Year/60,000-Mile Powertrain Limited Warranty<sup>42</sup> that is fully transferable. See your dealer for complete details and a copy of the 5-Year/60,000-Mile Powertrain Limited Warranty.<sup>42</sup>



**VEHICLE  
PROTECTION**

**MOPAR® VEHICLE PROTECTION  
PLANS**

A variety of Protection Plans accepted at all FCA US LLC dealerships have been designed to meet the needs of your unique lifestyle on the road. We stand behind every extended protection plan with certified, factory-trained technicians and the use of original equipment parts. Ask for a Mopar® Vehicle Protection Plan at your dealership, call (800) 442-2666 or visit [moparvehicleprotection.com](https://moparvehicleprotection.com)

**MOPAR® OWNER'S SITE & COMPANION APP** Get all the resources you need to make owning your Jeep® Brand vehicle the best experience possible. Schedule service directly with your preferred dealer, create a custom online dashboard tailored to you and your vehicle, and access personalized resources, including your own Owner's Manual, Vehicle Health Report, special offers and more — anytime, anywhere. Register your vehicle at [mopar.com](https://mopar.com) or download the Mopar® Owner's Companion App today.



**DRIVEABILITY**



**DRIVEABILITY PROGRAM**  
The FCA US LLC

DriveAbility Program provides aftermarket reimbursement incentives on adaptive vehicle upfit equipment to help provide safe and reliable vehicle modifications, enhancing accessibility for all people. For more information, call (800) 255-9877 or visit [fcausdriveability.com](https://fcausdriveability.com)



**JEEP® DRIVEPLUS<sup>SM</sup> MASTERCARD®** Apply today for a Jeep® DrivePlus<sup>SM</sup> Mastercard® and, upon approval, start earning 5% cash back on Jeep dealership purchases, 2% cash back on gas and travel purchases, and 1% cash back on purchases everywhere else.<sup>43</sup> Redeem your rewards toward your next service or your next Jeep purchase. Go to [drivepluscard.com](https://drivepluscard.com) or visit a participating dealer to learn more.



## EXCLUSIVE BENEFITS FOR EVERY JEEP® GRAND CHEROKEE OWNER

ALL 2022 JEEP® GRAND CHEROKEE VEHICLES ARE AUTOMATICALLY ENROLLED IN THE JEEP WAVE® CUSTOMER CARE PROGRAM. IT'S A PROGRAM DESIGNED TO PROVIDE JEEP® BRAND VEHICLE OWNERS WITH DEDICATED 24/7 OWNER SUPPORT AND A SPECIAL PACKAGE OF BENEFITS DESIGNED TO ENHANCE THEIR OWNERSHIP EXPERIENCE AND THANK THEM FOR THEIR PATRONAGE. VISIT [jeep.com/wave](https://jeep.com/wave) FOR MORE DETAILS.



**NO-ADDITIONAL-CHARGE  
WORRY-FREE MAINTENANCE<sup>44</sup>**



**CONFIDENCE WITH VEHICLE PROTECTION**



**DEDICATED 24/7 OWNER SUPPORT**



**VIP ACCESS TO JEEP® BRAND EVENTS**



**NO-CHARGE SAME-DAY RENTAL COVERAGE<sup>45</sup>**





**JEEP JAMBOREES** For those with an adventurous spirit, join us on the trail. Head for parts unknown or return to fun, familiar places. Jeep Jamboree USA offers off-road adventure weekends that bring together the outdoors, down-to-earth people and their Jeep Brand 4x4 vehicles. Explore America's backcountry at [jeepjamboreeusa.com](http://jeepjamboreeusa.com)



**JEEP GEAR** Uncover an extensive line of fun, developed exclusively for Jeep Brand enthusiasts. From authentic wearables to unique gifts, all items are as rugged and durable as your Jeep Brand vehicle. Express your true nature. Learn more at [jeep.com/gear](http://jeep.com/gear)



**JEEP BADGE OF HONOR** Experience an online community that invites off-road fans to sign up, download the app and check in to legendary off-road trails across the U.S. — earmarked by the Jeep Badge of Honor. Members can discover special trails and maps, earn Trail Points and ranks within the community, share photos and learn more about Jeep Trail Ratings. Connect with fellow Jeep Brand vehicle owners and like-minded friends at [jeep.com/badge-of-honor](http://jeep.com/badge-of-honor)



**JEEP AMAZON STORE** Browse an ever-changing collection of unique Jeep Brand merchandise with your favorite shopping experience at Amazon.com, including items eligible for Amazon Prime. Start exploring at [amazon.com/jeepstore](http://amazon.com/jeepstore)



**SOCIAL ADVENTURES** Expand your horizons to include authentic and active Jeep Brand online communities. Post stories, share photos, watch videos and get the latest news from Jeep Brand gearheads and engineers on Facebook, Instagram, Twitter and YouTube. Tune in and get out into the virtual world, where thrilling adventures are happening every single day.

---

[facebook.com/Jeep](https://facebook.com/Jeep)

---

[instagram.com/Jeepofficial](https://instagram.com/Jeepofficial)

---

[twitter.com/Jeep](https://twitter.com/Jeep)

---

[youtube.com/TheJeepChannel](https://youtube.com/TheJeepChannel)

---

DELVE DEEPER INTO THE  
JEEP LIFE WITH AN  
EXPANSIVE ARRAY OF  
SOCIAL MEDIA, SHOPPING,  
OWNER RESOURCES AND  
ONE-OF-A-KIND EVENTS.  
START YOUR ADVENTURE  
TODAY AT [JEEP.COM](http://JEEP.COM)



EXPANDED HORIZONS

# ADVENTURE AWAITS

BUILD YOURS



THERE'S ONLY ONE

(1) Based on Ward's Middle / Sport Utility Vehicle — excludes other FCA US LLC vehicles. Based on Summit model offerings. (2) Based on Ward's Middle / Sport Utility Vehicle — excludes other FCA US LLC vehicles. Based on Trailhawk model offerings. Based on best-in-class approach angle, departure angle, ramp breakover angle and ground clearance. (3) Jeep Grand Cherokee has received more awards in its lifetime than any other SUV. (4) Based on manufacturer's estimates of greenhouse gas emissions vs. previous Jeep Grand Cherokee generations. (5) Based on Ward's segmentation. (6) Based on manufacturer's estimated miles per gallon equivalent (MPGe) with fully charged battery. Actual mileage may vary. (7) Requires compatible iPhone. See dealer for phone compatibility. Data plan rates apply. Vehicle user interface is a product of Apple. Apple CarPlay is a trademark of Apple Inc. iPhone is a trademark of Apple Inc., registered in the US and other countries. Apple Terms of use and privacy statements apply. (8) To use Android Auto on your car display, you'll need an Android phone running Android 6 or higher, an active data plan and the Android Auto App. (9) Based on 2.0L I-4 PHEV engine, 16-KWh lithium-ion battery and 8-speed automatic transmission. (10) Always check entire surroundings visually before proceeding. (11) This system is a driver convenience system, not a substitute for active driver involvement. The driver must remain aware of traffic conditions and be prepared to use the brakes to avoid collisions. (12) Traffic Sign Recognition is not a substitute for safe and attentive driving. Factors including weather and condition of the traffic sign can impact recognition and display of the sign. Always check traffic signs visually while driving. (13) Based on Ward's Middle / Sport Utility Vehicle — excludes other FCA US LLC vehicles. (14) Requires purchase and professional installation. See dealer for details. (15) Charging times can vary based on the acceptance rate of the vehicle. (16) Based on Ward's Middle / Sport Utility Vehicle — excludes other FCA US LLC vehicles. Based on Trailhawk with class-exclusive Quadra-Lift Air Suspension. (17) Do not attempt water fording unless depth is known and consistent with the vehicle's water fording rating in the Owner's Manual. Traversing water can cause damage that may not be covered by the new vehicle warranty. Always off-road responsibly in approved areas. (18) Certain features require compatible streaming device and may use your device's existing data plan (not compatible with Apple devices). See dealer for details. (19) Always be aware of your surroundings and drive carefully, consistent with conditions. (20) Vehicle must be in an active and usable cellular range and properly equipped with a Uconnect 5 NAV system and Rear-Seat Entertainment with Fire TV package. For streaming, requires a Wi-Fi connection and registered Amazon account to run Fire TV in the vehicle. Streaming service subscriptions are not included. Certain services are subject to change or withdrawal at any time, may not be available in all areas and languages, and may require separate subscriptions. Amazon, Fire, Alexa and all related marks are trademarks of Amazon.com, Inc. or its affiliates. (21) Check state and local laws regarding the use of remote start systems. (22) Three-month / 1GB trial included with the purchase or lease of a new vehicle. Upon expiration of the trial period, purchase of a subscription is required. Wi-Fi Hotspot available through third-party subscription. Requires internet-enabled mobile device. See dealer for details. This feature is not intended for use by the driver while the vehicle is in motion. Always drive carefully. (23) Your service will automatically stop at the end of your trial subscription unless you decide to continue service. If you do not wish to enjoy your trial subscription, you can cancel it by calling the number below. If you decide to continue service after your trial period included with the new vehicle purchase, the

subscription plan you choose will automatically renew thereafter and you will be charged according to your chosen payment method at then-current rates. Trial service is not transferable. Fees and taxes apply. Please see the Customer Agreement at [www.siriusxm.com](http://www.siriusxm.com) for complete terms and how to cancel, which includes calling SiriusXM at 1-866-539-7474. All fees and programming are subject to change. Not all vehicles or devices are capable of receiving all services offered by SiriusXM. Data displays and individual product availability vary by vehicle hardware. (24) Vehicle must be equipped with Uconnect 5 NAV. (25) Available on properly equipped vehicles with a Uconnect 5C / 5C NAV system. Requires a Wi-Fi Hotspot plan and linked Amazon account to run Alexa in the vehicle. (26) Compatible with properly equipped Uconnect systems on eligible vehicles. Requires registration of vehicle to Jeep Connect connected services and fulfillment of minimum subscription requirements. Amazon, Alexa, and all related logos and marks are trademarks of Amazon.com, Inc. or its affiliates. (27) In the event of a medical or other emergency, press the SOS button to be connected to a Customer Care agent who can direct emergency assistance to your vehicle's GPS location. (28) Remote Vehicle Start not available on all vehicles. You are responsible for using remote features in accordance with any laws, rules or ordinances in effect in your vehicle's location. You must have an active subscription to Jeep Connect in order to use remote services. See Terms of Service for service limitations. (29) You are responsible for using remote features in accordance with any laws, rules or ordinances in effect in your vehicle's location. You must have an active subscription to Jeep Connect in order to use remote services. See Terms of Service for service limitations. (30) To use Vehicle Finder, you must have the Uconnect App with Jeep Connect installed on a compatible smartphone and have an active subscription to Jeep Connect. (31) Based on EPA estimates with a 3.6L engine and 4x2 configuration. Actual mileage may vary. (32) This system is a driver convenience system, not a substitute for active driver involvement. The driver must remain aware of traffic conditions and maintain control of the vehicle. (33) This system is an alert system for the front of the vehicle. It is not a substitute for active driver involvement. The driver must remain aware of traffic conditions and be prepared to use the brakes to avoid collisions. (34) Always check visually for vehicles prior to changing lanes. (35) Always look before proceeding. An electronic drive aid is not a substitute for conscientious driving. Always be aware of your surroundings. (36) This system is an alert system for the front and sides of the vehicle. It is not a substitute for active driver involvement. The driver must remain aware of traffic conditions and be prepared to use the brakes to avoid collisions. (37) Always sit properly in designated seating positions with seat belts securely fastened at all times. (38) For supported file formats, refer to the USB Port section of the Owner's Manual or DVD. (39) Always drive carefully, consistent with conditions. (40) Item is a Mopar Accessory that may require installation by your dealer. See dealer for details. (41) Visit [Mopar.com](http://Mopar.com) for complete details and a copy of the Basic Limited Warranty. (42) Visit [Mopar.com](http://Mopar.com) for complete details and a copy of the Powertrain Limited Warranty. (43) See the Reward Terms and Conditions in the Summary of Credit Terms provided at time of application for details, including earning, redemption, expiration or forfeiture. Percentage back is earned as points. (44) Non-luxury brands. Excludes other FCA US LLC brands. (45) Rental allowance (not to exceed \$35) is only for same-day mechanical repair or maintenance service (excluding bodywork). Vehicles kept overnight are not eligible.

©2022 FCA US LLC. All Rights Reserved. Jeep, the Jeep grille, Grand Cherokee, Grand Cherokee Summit, Altitude, Badge of Honor, CommandView, DriveAbility design, HEMI, Jeep Wave, Laredo, Mopar, Mopar Vehicle Protection, Overland, ParkSense, ParkView, Pentastar, Quadra-Drive, Quadra-Lift, Quadra-Trac I, Quadra-Trac II, Selec-Terrain, Trailhawk, Trail Rated and Uconnect are registered trademarks and Keyless Enter 'n Go is a trademark of FCA US LLC.

Alpine and the Alpine logo are registered trademarks of Alpine Electronics, Inc. All rights reserved. Amazon, Alexa, Fire TV, and all related logos and marks are trademarks of Amazon.com, Inc. or its affiliates. Apple, Apple CarPlay and iPhone are registered trademarks of Apple Inc. Bluetooth is a registered trademark of Bluetooth SIG, Inc. Bridgestone and any Bridgestone products or service names are trademarks or registered trademarks of Bridgestone Corporation. Facebook and logo are registered trademarks of Facebook, Inc. Goodyear is a registered trademark of The Goodyear Tire & Rubber Company. All rights reserved. Google, Android, YouTube, Android Auto and other marks are trademarks of Google LLC. Instagram is a registered trademark of Instagram, Inc. Cards are issued by First National Bank of Omaha (FNB), pursuant to a license from Mastercard International Incorporated. Mastercard is a registered trademark, and the circles design is a trademark of Mastercard International Incorporated. McIntosh is a registered trademark of McIntosh Laboratory, Inc. Michelin is a registered trademark of Michelin North America, Inc. Pandora is a registered trademark of Pandora Media, Inc. all rights reserved. Sirius, XM, SiriusXM, SiriusXM Guardian, and all related marks and logos are registered trademarks of SiriusXM Radio Inc. Thule is a registered trademark of Thule Group. TomTom is a registered trademark of TomTom International BV. The Twitter name, logo, Twitter T, Tweet and Twitter bird are trademarks of Twitter, Inc. in the United States and other countries.

This document is a publication of FCA US LLC. All product illustrations and specifications are based upon current competitive information at the time of publication approval. FCA US LLC reserves the right to make changes from time to time, without notice or obligation, in prices, specifications, colors and materials, and to change or discontinue models which are considered necessary to the purpose of product improvement or for reasons of design and / or marketing.