

# WRANGLER

SAHARA | RUBICON



Jeep<sup>®</sup>

[www.jeep.com.sg](http://www.jeep.com.sg)



## RENEW THE VIEW

Everything in this appealing and spacious cabin supports your quest to experience the world from a renewed perspective. You will find exceptional quality, solid fit and finish, smartly placed controls, and a long list of welcome.

Exclusively in the Rubicon model, you'll find its unique REDical Anodized mid dash panel pays homage to the original Wrangler cabin design and added Red accents stitching throughout.

## BADGE OF HONOR



A Trail Rated 4x4 Wrangler has succeeded against a series of grueling tests in five categories: Traction, Water Fording, Maneuverability, Articulation, and Ground Clearance.

Thus, your Trail Rated Jeep Wrangler is engineered for exceptional off-road performance and assures you that this legendary pioneer discovery can master the most challenging road and weather conditions out there.

## AUTHENTIC 4X4 AUTHORITY

### SELEC-TRAC FULL-TIME 4X4 SYSTEM

This proven Jeep Brand 4WD system, with its active 4WD transfer case, does all the thinking so you can concentrate on the scenery. Selec-Trac analyzes the situation for you and sends torque to the wheels with the most grip. The system provides continuous, optimum traction that effortlessly conquers snow, ice, rock, muds - and everything in between. The system's Smart Lock maintains constant 4x4 action when you take to the trail or face challenging road conditions.

### ROCK-TRAC 4x4 SYSTEM

Rubicon rides with this extreme 4x4 system. Its 4:1 low-gear ratio allows Wrangler Rubicon to crawl at a low speed for greater control and increase torque.



## ROOF WITH A VIEW



### SUNRIDER SOFT TOP

An easy-to-use zipperless design. Its simple operation allows the top to glide open with the help of spring-loaded support bars. It is crafted from heavy-duty, waterproof cloth material.

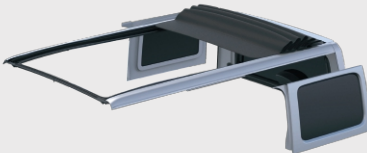


### FREEDOM TOP MODULAR HARDTOP

This 3-piece hardtop is light and easy to remove. For a full open-air experience, you can remove all three sections or let in the sun by just removing the two front

### SKY ONE-TOUCH POWER TOP

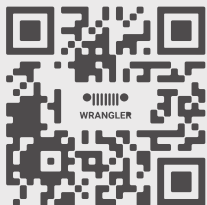
The first-ever power top on a Wrangler model invites in the fresh air with the push of a button. Open up even more with easy-to-remove rear glass quarter panels.



## SPIRITED ADVENTURE FULFILLED

When you're powered by this kind of authentic Jeep Brand capability, you're given the confidence to travel wherever your dreams want to go. Jeep Wrangler is purposefully designed to tackle the elements and win every time. Wrangler is recognized the world over as a true icon, and it's as one-of-a-kind as the destinations you're outfitted to discover and explore.





# SCAN QR CODE TO FIND OUT MORE



chryslerjeepsg



chryslerjeepsg

## ENGINE

Capacity (cc)	1,995
Fuel Type	Petrol
Type	In-line 4-Cylinder, Direct Injection Turbocharged
Valves	16
Bore / Stroke (mm)	84 x 90
Compression Ratio	10.0 : 1
Cooling	Liquid

## TRANSMISSION

Gearbox	8-Speed
Type	Automatic

## WEIGHT

Unladen Weight (kg)	2,013 - 2,123	Max Laden Weight (kg)	2,636
---------------------	---------------	-----------------------	-------

## MECHANICAL CAPABILITIES

### SAHARA

Axles	Front Axle : Dana M186 Rear Axle : Dana M200
Differentials	Front & Rear Axle : Conventional Differential Front & Rear Stabilizer Bar
Suspension	Heavy Duty Suspension w/ Gas Shocks
4x4 System	Selec-Trac 4x4 Auto/Part-time / Shift-on-the-fly Command-Trac 4x4 with 2.72 : 1 ratio

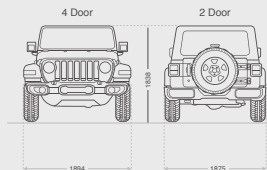
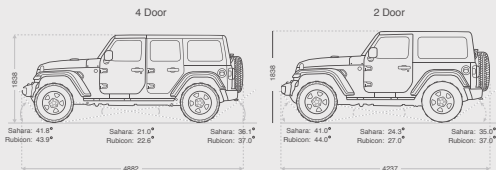
## TIRES & WHEELS

Wheels	18" Alloy Rims
Tires	255/70R18

## FUEL CONSUMPTION

Urban ( L/100km)	11
Extra Urban Cycle (L/100km)	7.2
Combine Cycle (L/100km)	8.6
VES Banding	C2

## DIMENSIONS



## PERFORMANCE

Power (bhp / rpm)	268 bhp @ 5,250 rpm
Torque (NM/ rpm)	400 NM @ 3,000 rpm
Fuel Tank (L)	81.4

## CHASSIS

Steering	Electro-Hydraulic
Power Assisted	Yes
Tilt & Telescopic Steering Column	Yes (Manual)
Anti Roll / Stabilizer Bar	Front & Rear
Brakes ( Front / Rear)	Disc / Disc
Turning Radius / Curb to Curb (m)	11.8

## SAFETY

All Speed Traction Control  
Anti-Lock Brake System with Rough Road Detection  
Blind Spot Monitoring  
Electronic Brake Force Distribution  
Electronic Roll Mitigation  
Electronic Stability Control  
Transfer Case Skid Plate Shield  
Hood Insulation  
ParkView Rear Back Up Camera  
Rear Cross Path Detection System  
Rear Park Assist Sensors  
Selectable Tire Fill Alert

## EXTERIOR

Removable 3-piece Hard Top  
Removable Aluminium Doors with Power Window  
Flip-down Front Windscreen  
LED Headlamps & Taillamps  
LED Front Fog Lamps  
Auto Headlamp  
Tinted Windshield Glass  
Front Sied Repeater  
Fuel Tank Skid Plate Shield  
Side Steps : Side diamond-plate surface pattern  
( Sahara Only)  
Sky One-Touch Power Top ( Available as an Option)  
Body-Coloured Hard Top ( Available as an Option)

## TECHNOLOGY & ASSIST SYSTEM

Integrated Voice Command with Bluetooth  
Air-conditioning with Auto Temperature Control  
Auto Headlamps  
Daytime Running Lamps  
Keyless Enter-N-Go  
Remote Keyless Entry  
Remote Proximity Keyless Entry  
Hill Start Assist  
Hill Descent Control  
Traction Control  
Trailer Sway Dampening  
Tire Pressure Monitoring Display  
ParkSense Front & Rear Park Assist  
Integrated off-Road Camera  
Tire Fill Alert System  
Brake Force Distribution

## INTERIOR

12V Auxiliary Power Output  
Power Windows, Front 1-Touch Down  
Rear 60/40 Folding Seat  
Sun Visor with Illuminating Vanity Mirror  
Weather-resistant removable carpet  
One-way floor drain valves  
Dual Zone Automatic Temperature Control

## COLOUR AVAILABLE



## INFOTAINMENT

Alpine Premium Sound System  
All-weathered Subwoofer & 552-watt Amplifier  
Uconnect 8.4" Touchscreen Monitor with Navigation  
Apple Car Play  
Google Android Auto