



The Power to Surprise

**SPORTAGE**





**Born into the  
modern world**

The sun rises on a bold, dynamic design, with curves and lines an expression of captivating style and sharp sophistication. The new Sportage, a car that lets you live life to the full.





Taking you  
where you want to go

The art of metropolitan living is all about finding the perfect balance between work and pleasure. It's a matter of not only reaching your goals, but relishing the journey that takes you there.







## The definition of no-nonsense style

You're at one with everything the city has to offer - sophistication, refinement and the style and elegance of the latest trends - while not forgetting practicality. Cruising the city in your Sportage means you will never get left behind.





## Welcome aboard

Take a seat. This is your kind of vehicle. With the horizontal dashboard layout creating a feeling of space, the sensation is like being seated inside a sporty coupé.





Sounds to accompany the journey

Driving was made for music. So naturally, the Sportage features a top-of-the-line audio system to make your travels complete. Tune in to your preferred radio station, play CDs, or connect your MP3 player or iPod.

And there's no need to take your hands off the steering wheel to skip tracks or stations, since everything can be controlled from the steering wheel. The same goes for making phone calls, with Bluetooth functionality allowing you to do so hands-free.



6 speaker sound system, for music all around you

6 CDC & MP3 Audio

The high-quality audio system, with 6-CD changer, is integrated seamlessly into the front console.

**High-fidelity sound for your senses**  
Two tweeters and four door speakers provide a superior audio experience. While the option of an added subwoofer will provide an even more enhanced listening experience.



**Bluetooth hands-free**  
Bluetooth hands-free lets you talk on the phone without taking your hands from the steering wheel, and also lets you stream music.



**MP3, iPod and USB connectivity**  
With MP3, iPod and USB connectivity, you can enjoy your favourite music from a range of mobile storage devices and portable music players.



**Audio remote control**  
Turn it up, turn it down. The audio system can be controlled from the steering wheel at the touch of your fingertips.



## Our priority: your comfort

With the Sportage, dynamics go hand in hand with comfort. A ventilated driver's seat keep you cool on hot days, while the seats heat up in cold weather to keep you warm. As the road passes beneath the wheels, there's plenty going on overhead - a panoramic sunroof lets fresh air in and bathes you in natural light. And when the temperature climbs upwards, a fully automatic climate control system separately adjustable for driver and passenger keeps you cool.

### Automatic air conditioning with dual-zone control

Set your desired temperature and the air conditioning system automatically adjusts to maintain the optimal cabin climate. Dual-zone controls let the driver and front passenger select their own preferred temperature.



### Ventilated driver's seat

Blowing air through the backrest and seat cushions, the ventilated driver's seat maximises driving comfort.

### Seat warmers

To provide maximum comfort on cold days, the front and rear seats heat up at the touch of a button, keeping you warm.



### Stain resistant seat covers

Stain resistant seat covers keep the seats fresh and odor-free. (Available only for cloth seats)



### Panoramic sunroof

The all-glass panoramic sunroof operates with tilt and slide efficiency, while featuring built-in safety mechanisms to prevent wandering hands from getting trapped.





## On the inside, space

The Sportage's spacious interior embodies the three key design elements of rugged elegance, smooth surfacing and stylish functionality. Ergonomically designed seats combined with three-dimensional moulding complete the harmonious solidity.





## An outline of irresistibility

Take in the unmistakable profile. With a sloping roofline design that flows from front to back, Sportage exudes a sense of undiluted flair, strength and purpose that is evident in each and every well-defined contour.





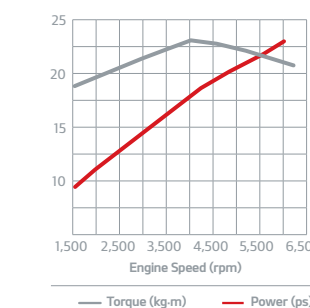
## Refined Power, and the power to reduce emissions

Modern driving demands performance with efficiency, and the Sportage delivers on both.



# 2,359cc

Theta II 2.4 D-CVVT Gasoline engine  
 Max. Power 177 ps @ 6,000 rpm  
 Max. Torque 23.1 kg-m @ 4,000 rpm



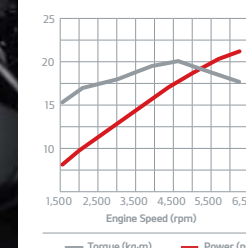
## Built to perform, made for optimum mileage

With a choice of 2.0 or 2.4-litre four-cylinder gasoline engines or a 2.0-litre R diesel engine, you'll enjoy smooth, measured power together with low CO<sub>2</sub> emissions. With the 2.4-litre gasoline version generating a maximum 177ps @ 6,000 rpm, the engine's low weight aluminium construction contributes to frugal fuel consumption. At the same time, minimal vibration, variable valve timing and a variable induction system exemplify class-leading build quality.



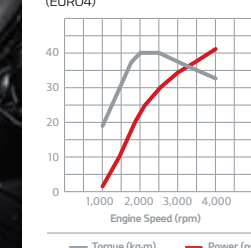
# 1,998cc

Theta II 2.0 D-CVVT Gasoline engine  
 Max. Power 166 ps @ 6,200 rpm  
 Max. Torque 20.1 kg-m @ 4,600 rpm



# 1,995cc

R 2.0 VGT Diesel engine  
 Max. Power 184 ps @ 4,000 rpm  
 Max. Torque 40.0 kg-m @ 1,800-2,500 rpm (EURO4)





Enjoy the drive,  
love the technology

## 3 cylinder cluster & auto cruise control

### Supervision cluster

The sporty supervision cluster displays a range of driving information, including average fuel consumption, average speed and trip distance, and even provides a washer fluid level warning.

### Auto cruise control

Ideal for maintaining a consistent speed during motorway driving, the auto cruise control function includes a memory feature so that you can effortlessly resume your previous speed after braking.

### Trip computer

An easy to read LCD trip computer provides you with useful information about your journey, such as distance to your destination, distance left to refuelling, and so on.

### Supervision cluster



### Advanced transmission

Choose either 5-speed (2.0 litre gasoline version only) or 6-speed manual or 6-speed automatic transmission. The sixth gear adds an extra dimension to cruising, while the auto shift lock system of the automatic prevents unintended accelerations.



### Organ-type accelerator pedal

Designed so that your entire foot can rest on the whole pedal surface, the organ-type accelerator pedal moves in the same trajectory as your ankle, providing greater comfort and reduced fatigue, especially on long journeys.



The ultimate test of any vehicle is how it drives. The Sportage performs on any terrain, be it smoothly surfaced highways or winding routes where curves and undulations are all part of the driving fun. Helping you make the most of whatever the road brings is a range of advanced features such as 6-speed transmission and auto cruise control. And at the heart of it all, a highly visible instrument panel cluster giving you all the information you need.



Out on the road, everything  
is at your command

Take your Sportage anywhere you want. Advanced technologies deliver the ride you've been waiting for.



## Pick a destination. Then let Sportage take you there

The world is yours to discover. And what better way to discover it than with the Sportage? On or off-road, it's at home in any environment. A trusted companion to expand your horizons.







## Getting to grips with the road

Surefooted road handling and exceptional traction over the most demanding terrain. With all-wheel drive, the Sportage really shows you what it's made of.



**AWD lock mode**  
When you encounter low-traction surfaces such as deep snow or sand, a simple push of a button engages AWD lock to provide a 50:50 torque split between the front and rear wheels.



Available as an option, automatically-engaging all-wheel drive senses road conditions, wheel speed and acceleration, then applies the correct amount of torque to the front and rear wheels. The result is optimum grip, allowing you to tackle any kind of road surface and gradient with complete confidence. Meanwhile, the independent suspension system ensures that handling is always balanced, agile and manoeuvrable, with the suspension itself featuring a high performance damper to soak up shocks from the road.

## A<sup>WD</sup> a sporty yet refined driving experience



**Independent suspension**  
With each wheel moving in a vertical direction independent of the other wheels, the car deftly responds to uneven road surfaces for optimal handling.



## Delivering the ride, delivering the safety

### Peace of mind active and passive safety features

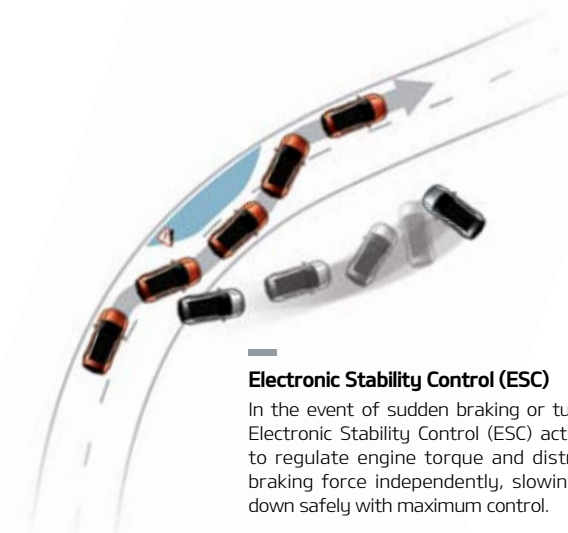
A comprehensive range of safety features are incorporated into the Sportage to ensure the finest in driving is accompanied by the finest in safety. Six airbags are built in - two at the front for driver and passenger, two at the sides, plus curtain airbags running front to back. The side and curtain airbags incorporate a rollover sensor, automatically inflating in the event of the car turning over.

(Rollover sensor is not available in Middle East countries)



#### Downhill Brake Control and Hill-start Assist Control

Downhill Brake Control (DBC) helps you safely maintain control and a steady speed on steep descents. Hill-start Assist Control (HAC) prevents you from rolling backwards when pulling away from stop on an incline.



#### Electronic Stability Control (ESC)

In the event of sudden braking or turning, Electronic Stability Control (ESC) activates to regulate engine torque and distribute braking force independently, slowing you down safely with maximum control.



#### Disc brakes with ABS

Large disc brakes offer plenty of stopping power, and an Anti-lock Braking System (ABS) prevents skidding and lets you maintain steering control under hard braking conditions.



#### Active headrests

Active headrests cushion the head and neck during a rear-end collision, moving forwards and up within a split second of impact.



#### ECM with rear view display

The Electro-Chromic rear-view Mirror (ECM) automatically dims when it senses headlight glare from tailing vehicles, making night driving safer and easier. It also incorporates a rear-view display that provides all-round vision by eliminating blind spots.



#### Rear Parking Assistance System

Parking in tight spaces can often be awkward. The Rear Parking Assistance System sounds an alert if you get too close to obstacles, making parking simpler than ever before.

## 6 airbag protection with rollover sensor



#### Across-the-board collision countermeasures

Improved interior cabin safety is delivered through the use of high tensile strength steel reinforcing the front, rear and sides, oversized bumper beams, a ringed structure at the centre pillar area, and a chassis design that disperses impact along a number of different paths.







The end of the day. And  
some things are just beginning

Time to kick back and do what you want to do. The Sportage, standing still yet looking like it wants to move, adds a mystique of anticipation to things to come.





## Storage space with a place for everything

The Sportage doesn't just provide ample room for you to stow your gear. Thanks to 60:40 split folding rear seats, you can carry luggage of all shapes and sizes. So loading long items like skis is just as easy as carrying compact items like suitcases and sports holdalls. Add further convenient stowage areas like a sunglasses holder complete with map reading lamp, drink holders and an illuminated glove box, and everything is where it should be.



### Cargo screen and luggage net

A luggage screen hides your gear while a net prevents stowed away items from sliding about so you can load up your Sportage with peace of mind.

- 01. **Door map-pocket** The place to keep maps and other items that require easy accessibility.
- 02. **Center console** A comfortable armrest for the driver which opens up to provide a useful storage space.
- 03. **Front floor console with cup holders** Convenient cup holders are built into the front floor console, within easy reach of both driver and front seat passenger.
- 04. **Cooling glove box** Complete with a light for better visibility, an optional cooling glove box lets you keep drinks and snacks chilled.
- 05. **Rear centre armrest with cup holder** Provides added comfort for passengers, and lets them store drink cups securely.
- 06. **Door trim tray** Another convenient space for keeping small items close-at-hand.



**Spacious flexibility**  
Configure the stowage space the way you want: 2<sup>nd</sup> row seats upright, split-folding or full folding.



Arrange the rear seats depending on what you're carrying for all the storage flexibility you'll ever need.

## Split back folding rear seats



### One-touch folding strap

Using the convenient strap, one touch is all that's needed to fold down the rear seats.





### Black bezel headlamps with LED DRL

High tech black bezel headlamps with LED daytime running lights provide sharp illumination at night and added driving safety during the day...not to mention plenty of visual impact.

### HID headlamps

HID headlamps produce more light than conventional headlamps while using less power. At the same time, their distinctive blue light lends the Sportage a noticeable touch of class.

## Inside and out, the complete CUV

**01. Smart key with push-button start/stop** Fire up the ignition without turning the key. Sporty sensations are at the tip of your finger. **02. New Kia grille design** Kia's family-look front grille gives Sportage an instantly recognisable and modern appearance. **03. Headlamps with escort function** When you lock the car after parking, the headlamps stay reassuringly lit for 30 seconds. **04. Gull-wing folding heated outside mirrors** Offering a touch of class with their looks, aerodynamics and built-in LED lights, the wing mirrors also provide rapid de-misting on cold & rainy days. **05. Bumper and fog lamps** Part of Sportage's sleek frontal styling, fog lamps improve your vision during adverse weather conditions. **06. Wheel arch and side sill moulding** The sculpted, voluminous wheel arches and side sills are all part of Sportage's dynamic stance. **07. Rear spoiler and high-mounted stop lamp** Enhances both aerodynamics and other road users' visibility of your intention to brake. **08. Two-tone rear bumper with signal lamp** Separated from the main rear lamp cluster, the rear signal lamps form an elegant part of the rear bumper. **09. Surface-mounted roof rack** The Sportage is for the adventurous. A surface-mounted roof rack lets you easily carry your outdoor equipment.



**10. Door scuffs** Help protect the interior finish when you enter and exit the vehicle. **11. Safety power window** Convenient with smooth operation and an anti-trap mechanism so that hands and objects don't get caught. **12. Sunvisors** Not only do they shield your eyes from the sun, but also feature built in vanity mirrors. **13. Map lamp and sunglasses holder** Just what you need to study a map closely, together with a useful place to keep sunglasses within easy reach. **14. Manual tilt steering wheel** A fully adjustable manual tilt steering wheel lets you find your ideal steering wheel position. **15. 6-way adjustable seat** The 6-way power adjustable driver's seat lets you tailor your driving position to the perfect setting.



### Hi-tech rear combination lamps

Built into the contours of the bodywork, the multi-coloured rear combination lamps are designed to ensure that the flowing lines of the Sportage are not disturbed.





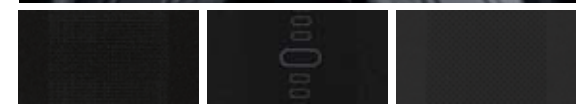
# Colours & Dimensions

## Interior Colours

Black seat



Alpine-grey seat



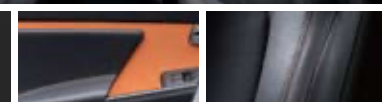
LX (Flat woven) EX (Tricot) Pure leather

LX (Flat woven) EX (Tricot) Pure leather

Beige seat



Orange package



LX (Flat woven) EX (Tricot) Pure leather

Pure leather / Woven Door trim Stitch

## Exterior Colours



Clear White (UD)



Bright Silver (A3D)



Sand Track (D5U)



Mineral Silver (E6S)



Black Cherry (9P)



Techno Orange (D2A)



Signal Red (BEG)



Vintage Blue (BAH)

## Wheels

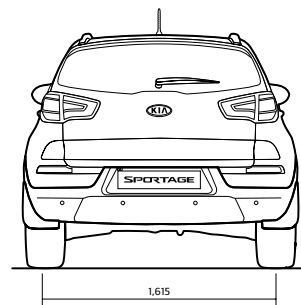
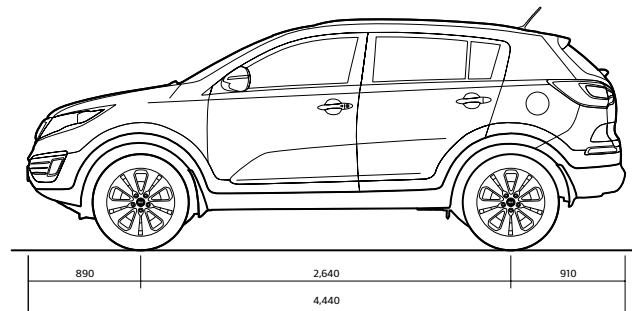
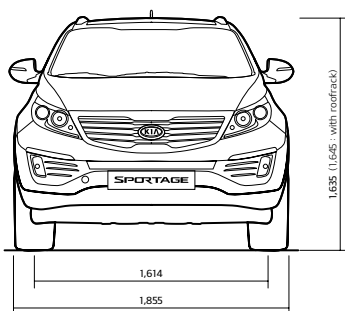
16-inch Alloy Wheel

17-inch Alloy Wheel

18-inch Alloy Wheel



## Dimensions



### Dimensions (mm)

Overall length	4,440
Overall width	1,885
Overall height	1,635
Wheelbase	2,640
Wheeltrack (F/R)	1,614/1,615
Overhang (F/R)	890/910
Headroom (1 <sup>st</sup> /2 <sup>nd</sup> )	992/977
Legroom (1 <sup>st</sup> /2 <sup>nd</sup> )	1,051/963
Fuel tank (ℓ)	55

## As eco-conscious as you are

So you value sustainable living? We do too. That's why we take pride in rising to meet the expectations and challenges of the 21st century while making tangible contributions to the preservation of the environment and sustainable development of society.

We set up an environmental research centre to spearhead our drive for the production of clean hybrid and fuel-cell vehicles to lead the way to eco-friendly cars for a greener tomorrow for you, your children and all of us.

The concept of eco-friendly cars is adhered to throughout all phases of a vehicle's life. From design through to recycling, we create innovative products, adhering to state-of-the-art Design for Recycling (DfR) guidelines. Wherever possible, recycled and recyclable materials are being used in the production of every Kia. Even at the end of your car's life, one of our environmental targets is the eco-friendly return and treatment of end-of-life vehicles.

Operating a rigid process, we guarantee environmental protection in the treatment of harmful waste substances. These are then recycled or recovered, ensuring the highest level of environmental protection.

As you see, what you do on a small scale with your household refuse, we at Kia motors do on a large scale.







The Power to Surprise



Official Partner



**Kia BUZZ**