



2011  
**Rio**

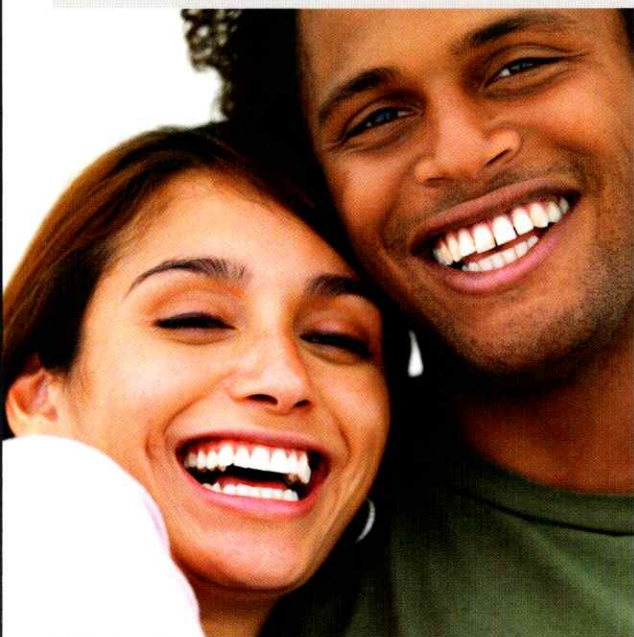


## GOOD THINGS COME IN SMALL PACKAGES.

The 2011 Kia Rio sedan is small on the outside but big where it counts – in value, features and comfort.

The city-sized Rio sedan zips through traffic with a lively, 1.6-litre, 110-horsepower engine that pretty much assures that you won't be spending a lot of time or money at the gas pump. You'll also enjoy quality time when you're behind the wheel, thanks to Rio's roomy, five-passenger cabin and a host of standard comfort and convenience features that include an AM/FM/CD/MP3 audio system with iPod®-friendly auxiliary and USB ports, standard Bluetooth® hands-free cell phone connectivity<sup>1</sup> and a handy remote trunk release.

The 2011 Rio sedan. Proof that good things do come in small packages.



<sup>1</sup> Bluetooth® enabled cell phone required.

Rio EX Convenience shown in Sapphire metallic.



Rio5 EX Sport shown in Solar Flare metallic.



## HOW MANY WAYS CAN YOU SPELL FUN?

The 2011 Kia Rio5 has fun written all over it – from its sporty hatchback styling and available 15-inch alloy wheels to the responsive 110-horsepower engine that just loves to fly when you say Go!

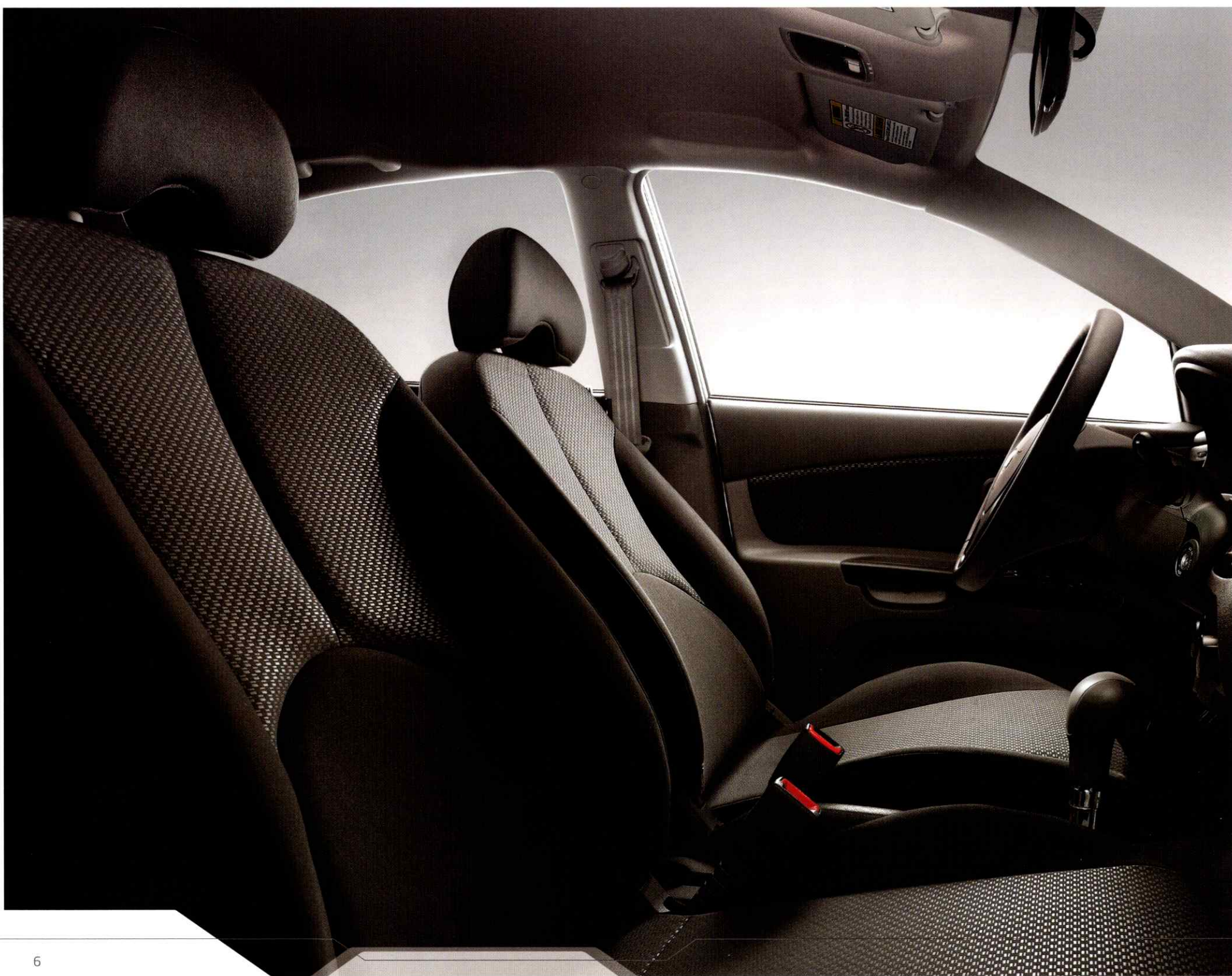
For the ultimate in Rio5 fun, step into the EX Sport model with its standard power tilt and sliding sunroof, metal-covered pedals, sport cloth seats, and leather-wrapped steering wheel and shifter. That's all in addition to the great-sounding, iPod®-friendly AM/FM/CD/MP3 audio system and standard Bluetooth® hands-free cell phone connectivity<sup>1</sup> that comes on every Rio5 model.

If you want more fun for your money, you need a Rio5 in your life.



Rio5 EX Sport shown in Clear Silver metallic.

<sup>1</sup> Bluetooth® enabled cell phone required.



## ROOMINESS, COMFORT AND MORE.

Get behind the wheel of a Rio 4-door sedan or Rio5 hatchback and you'll get the sense of being in a car where everything is just right. It's there in the design, the sightlines, the comfort of the seats and the solid feel of the switches and controls. Then take a look around. There's comfort and room for family, friends, groceries, sports gear and just about anyone or anything you want to bring along for a ride.

Rio and Rio5 also come with thoughtful amenities – like handy front and rear door pockets, convenient dual front covered vanity mirrors and carpeted floor mats – as standard equipment.

So if you want more, it's all here.



**Power is good.** Convenient driver's-door switches give touch-of-a-button control over the standard power door locks, power heated side mirrors and power windows on EX Convenience and EX Sport models.



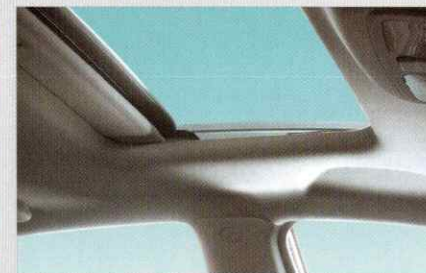
**There's a place for that.** Rio and Rio5 come with plenty of places to safely store all sorts of odds and ends. There's even a hideaway bin near the shifter that's perfect for valuables and other small items.



**The heat is on.** Who would expect the comfort of heated front seats on a car so affordable? They're just another pleasant Rio and Rio5 surprise, and they're standard on EX Convenience and Sport models.



**It all fits.** The Rio5 hatchback features a hard-shell cargo cover to keep luggage neatly out of site. For larger loads, simply remove the cover and fold down the standard 60:40 split folding rear seats and you've got up to 1,405 litres (49.6 cu. ft.) of cargo space.



**Hello sunshine.** What could be better than driving in the open air of a perfect day? You enjoy it to the max with the standard power tilt and sliding sunroof on the Rio5 EX Sport.

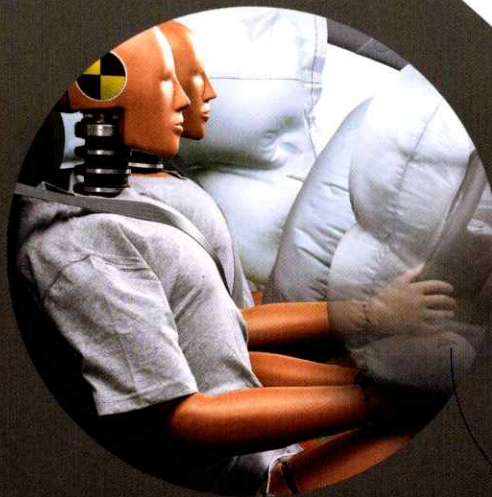


# KEEPING YOU SAFE AND IN CONTROL.

The safest feeling of all is being in control, and that's what the sharp-handling Rio and Rio5 give you. The independent MacPherson strut front suspension system and power rack-and-pinion steering work together to help you steer clear of trouble. Inside, that's complemented by a well-designed driving environment that places all the controls within easy reach so you can keep your attention on the road.

Rio and Rio5 also protect you and your passengers from everyday driving concerns with standard safety features like dual front airbags, three-point seatbelts in all positions and rear child-safety door locks on every model.

**Hands-free calling.** Every Rio model comes with standard Bluetooth® hands-free cell phone connectivity<sup>1</sup> for added convenience and safer driving.



**All-around protection.** In addition to standard front airbags, the Rio5 EX Sport comes with the additional protection of front side airbags and side curtain airbags.



**Cruise easier.** Steering wheel-mounted cruise controls can be set, adjusted or deactivated without having to move your hand off the wheel. They're standard on EX Convenience and EX Sport models.



**Go farther between fill-ups.** When you see the glowing green light of Kia's ECO-Minder™ indicator in the instrument cluster, you know you're driving at your fuel-efficient best. It's standard on automatic transmission-equipped Rio and Rio5 models.



**Sounds great.** Rio and Rio5 feature a standard AM/FM/CD/MP3 stereo with iPod®-friendly AUX and USB ports so you can take all favourite music with you, wherever you go.



**Perfect fit.** A standard tilt-adjustable steering column makes it easy to set the wheel just the way you like it on your Rio or Rio5.



**Stopping power.** Rio and Rio5 come with standard ventilated front disc brakes to help to ensure reliable, fade-free braking performance. For added confidence, Rio5 EX Sport models feature a four-wheel anti-lock braking system (ABS) as standard equipment.



**Clear vision.** Heated power side mirrors help keep ice, snow and fog off the mirror surfaces for better visibility in poor weather. They're standard equipment on EX Convenience and EX Sport models.

<sup>1</sup> Bluetooth® enabled cell phone required.

# Features

Exterior	Rio		Rio5		EX Sport
	EX	EX Conv.	EX	EX Conv.	
14" steel wheels with full wheel covers	S	S	S	S	-
15" alloy wheels	-	-	-	-	S
All-season tires P175/70R14	S	S	S	S	-
All-season tires P195/55R15	-	-	-	-	S
Body-colour bumpers	S	S	S	S	S
Body-colour side mouldings	S	S	S	S	S
Fog lights	-	-	-	-	S
Black bezel front headlights	S	S	S	S	S
Power tilt and sliding sunroof	-	-	-	-	S
Dual body-colour mirrors	S	S	S	S	S
Dual manual remote mirrors	S	-	S	-	-
Dual power heated mirrors	-	S	-	S	S
Variable intermittent windshield wipers	S	S	S	S	S
Rear window wiper with washer	-	-	S	S	S
Body-colour rear spoiler	A	A	A	A	S
Front and rear mud guards	S	S	S	S	S
Roof-mounted micro antenna	S	S	S	S	S
Chrome exhaust tip	-	-	-	-	S

Seating & Trim	Rio		Rio5		EX Sport
	EX	EX Conv.	EX	EX Conv.	
6-way adjustable driver's seat	S	S	S	S	S
Cloth seats	S	S	S	S	-
Sport cloth seating with red stitching	-	-	-	-	S
Heated front seats	-	S	-	S	S
Front & rear adjustable headrests	-	-	S	S	S
Front seatback pockets	S	S	S	S	S
Driver's seat fold-down armrest	S	S	S	S	S
60/40 split folding rear seats	S	S	S	S	S
Front and rear door pockets	S	S	S	S	S
Metal grain accents	-	-	-	-	S
Metal covered pedals	-	-	-	-	S

Comfort & Convenience	Rio		Rio5		EX Sport
	EX	EX Conv.	EX	EX Conv.	
Air conditioning	-	S	-	S	S
AM/FM/CD/MP3 stereo system	S	S	S	S	S
Four speakers	S	S	S	S	-
Six speakers including dual tweeters	-	-	-	-	S
Audio input jacks - AUX and USB	S	S	S	S	S
Bluetooth® hands-free cell phone connectivity <sup>1</sup>	S	S	S	S	S
In-dash digital clock	S	S	S	S	S
Power windows with driver's side one-touch express-down	-	S	-	S	S
Power door locks	-	S	-	S	S
Remote keyless entry with panic function	-	S	-	S	S
Tilt adjustable steering column	S	S	S	S	S
Leather-wrapped steering wheel and gear shift knob	-	-	-	-	S
Enhanced anti-theft ignition immobilizer	S	S	S	S	S
Tachometer	S	S	S	S	S
Day/night interior rearview mirror	S	S	S	S	S
Front vanity mirrors with cover	S	S	S	S	S
Front and rear passenger assist grips	S	S	S	S	S
Dome lamp with delay out	S	S	S	S	S
Front 12V power outlet	S	S	S	S	S
Cargo area lamp	S	S	S	S	S
Floor mats	S	S	S	S	S
Remote trunk release	S	S	-	-	-
Luggage hook on front passenger seat	S	S	S	S	S
Luggage net hooks in cargo area	S	S	S	S	S
Cruise control	-	S	-	S	S
ECO-Minder indicator <sup>2</sup>	S	S	S	S	S
Manual transmission shift indicator <sup>3</sup>	S	S	S	S	S

Safety	Rio		Rio5		EX Sport
	EX	EX Conv.	EX	EX Conv.	
Dual front impact passenger airbags	S	S	S	S	S
Dual front seat-mounted side impact airbags	-	-	-	-	S
Dual full-length side impact curtain airbags	-	-	-	-	S
Height adjustable front seatbelts	S	S	S	S	S
Front seatbelt pretensioners with force limiters	S	S	S	S	S
Rear 3-point seatbelts	S	S	S	S	S
4-wheel anti-lock braking system (ABS)	-	-	-	-	S
Side impact door beams	S	S	S	S	S
Lower anchors & tethers for children (LATCH)	S	S	S	S	S
Rear child safety door locks	S	S	S	S	S
Rear window defroster	S	S	S	S	S

S = Standard - = Not available A = Accessory Conv. = Convenience package

<sup>1</sup> Bluetooth® technology enabled cell phone required.

<sup>2</sup> With automatic transmission only.

<sup>3</sup> With manual transmission only.



The 2011 Rio and Rio5 are equipped with standard Bluetooth® technology to provide hands-free calling capability with Bluetooth-enabled cell phones.



**5 Year**  
Warranty

WE'VE GOT YOU COVERED.

- 5-year/100,000 km Worry-free comprehensive warranty covering virtually the entire vehicle\*
- 5-year/100,000 km Powertrain warranty covering the engine, transmission, axles, differentials and drivshafts\*
- 5-year/100,000 km Roadside assistance covers you in case of mechanical breakdown anywhere in North America\*
- 5-year/unlimited km Anti-perforation warranty on body sheet metal defects in material/workmanship\*

For more information visit [kia.ca](http://kia.ca) or call 1-877-542-2886

\* Some restrictions apply. For more information on our Total Care Ownership Coverage, call us at 1-877-542-2886. All information contained herein was accurate and correct at the time of printing. Kia Canada Inc. reserves the right to make changes at any time without notice, and without any obligations as to colours, materials, specifications, features, accessories, packages, models and any applicable programs. Some vehicles shown may include optional equipment or may not be exactly as shown. Kia Canada Inc., by the publication and dissemination of this material, does not create any warranties, either expressed or implied, to any Kia products. See your Kia dealer or website for further details. The Bluetooth word mark and logo are registered trademarks and are owned by Bluetooth SIG, Inc. Reproduction of the contents of this material without the expressed written approval of Kia Canada Inc. is prohibited. © Copyright 2010 Kia Canada Inc. Printed in Canada, August 2010.

# Specifications

## Engine

Type	1.6L, in-line 4-cylinder, iron block and aluminum head
Valve train	16-valve, DOHC, Continuously Variable Valve Timing (CVT)
Horsepower	110 hp @ 6,000 rpm
Torque	107 lb.ft. @ 4,500 rpm
Compression ratio	10.0:1
Transmission	5-speed manual, overdrive
	Available 4-speed automatic, electronically controlled, overdrive

## Dimensions, mm (in.)

	Rio	Rio5
Wheelbase	2,500 (98.4)	2,500 (98.4)
Track (front/rear)	1,470/1,460 (57.9/57.5)	1,470/1,460 (57.9/57.5)
Length	4,240 (166.9)	3,990 (157.1)
Width	1,695 (66.7)	1,695 (66.7)
Height	1,470 (57.9)	1,470 (57.9)
Ground clearance	155 (6.1)	155 (6.1)
Head room (front/rear)	1,005/960 (39.6/37.8)	1,005/960 (39.6/37.8)
Shoulder room (front/rear)	1,360/1,350 (53.5/53.1)	1,360/1,350 (53.5/53.1)
Leg room (front/rear)	1,085/870 (42.7/34.3)	1,085/870 (42.7/34.3)
Hip room (front/rear)	1,290/1,270 (50.8/50.0)	1,290/1,270 (50.8/50.0)

## Curb Weight, kg (lb.)

	Rio	Rio5
5-speed manual	1,049 - 1,160 (2,313 - 2,557)	1,059 - 1,170 (2,335 - 2,579)
4-speed automatic	1,071 - 1,182 (2,361 - 2,605)	1,081 - 1,192 (2,383 - 2,628)

## Body & Chassis

Layout	Front engine, front wheel drive
Body type	Steel unibody
Front suspension	Independent, MacPherson struts and stabilizer bar
Rear suspension	Torsion beam with gas shock absorber and coil springs
Steering	Rack-and-pinion, power-assisted

## Capacities, L (cu. ft.)

	Rio	Rio5
Interior volume	2,949 (104.1)	3,060 (108.1)
Cargo volume	337 (11.9)	448 (15.8)
Cargo volume, rear seats folded down	-	1,405 (49.6)
Fuel tank capacity, L (imp. gal.)	45 (10)	45 (10)

## Fuel Economy

### Highway/City, L/100km (mpg)

5-speed manual transmission	5.8/7.1 (49/40)
4-speed automatic transmission	5.6/7.5 (50/38)

# Interior Colours

Charcoal Cloth (C)

Sport Cloth (S)

# Accessories

Rear spoiler

Hood deflector

Door visors

"Spokes" alloy wheel

"X-ray" alloy wheel

# Exterior Colours

Solar Flare (M) Rio: C Rio5: C/S

Racing Red (M) Rio: C Rio5: C/S

Cashmere Beige (M) Rio: C

Sapphire (M) Rio: C Rio5: C/S

Olive Grey (M) Rio: C Rio5: C/S

Clear White Rio: C Rio5: C/S

Clear Silver (M) Rio: C Rio5: C/S

Midnight Black Rio: C Rio5: C/S

C = Charcoal cloth, S = Sport cloth with red stitching (EX-Sport model only), M = Metallic paint.  
The exterior and interior colours in this brochure are as close to the actual vehicle production colours as the printing process allows.

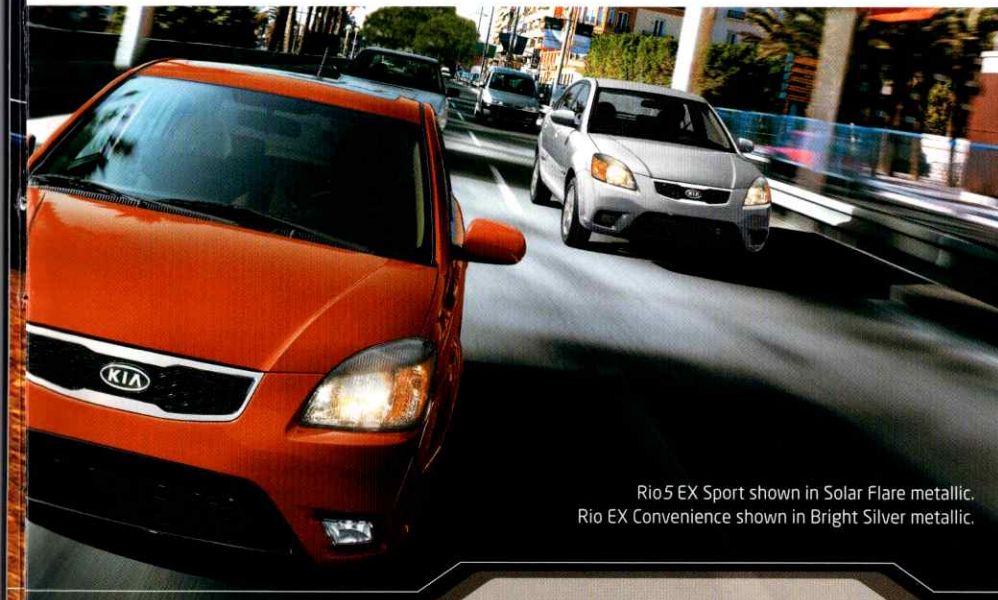
# Wheels



14" steel wheels with covers



15" alloy wheels



Rio5 EX Sport shown in Solar Flare metallic.  
Rio EX Convenience shown in Bright Silver metallic.



## Reward Yourself.

Kia Member Rewards is an exclusive rewards program for Kia Customers. As a Kia Rewards Member, you'll earn points with every dollar you spend on maintenance service, parts and accessories at your servicing Kia dealer. Those Reward Points can be redeemed for discounts on future purchases – including the purchase of a new Kia. Plus earn Bonus Points on select items and services to collect rewards even faster.

### Kia Member Rewards No-Charge Benefits include:

- Fuel fill-up with the delivery of your new Kia vehicle
- Local shuttle service
- Multi-point vehicle inspection with every service visit
- Windshield washer fill-up with every paid service
- Windshield wiper installation with wiper purchase
- Preferential rates on car rentals, nationwide
- 24/7 Roadside Assistance for your vehicle under Kia's 5-year/100,000-km warranty or Certified Pre-Owned warranty
- Email notification of exclusive Kia specials and events – a great way to earn Reward Points and save on future purchases

**Become a Kia Premium Rewards Member:** Ask your Kia Dealer how you can enjoy even more benefits.

**Enroll Today.** Becoming a Kia Rewards Member is easy. See your Kia Dealer today to join. Visit [rewards.kia.ca](http://rewards.kia.ca) for full terms and conditions.



**FSC**  
**Mixed Sources**  
 Product group from well-managed forests, controlled sources and recycled wood or fiber  
 Cert no. SW-COC-002802  
[www.fsc.org](http://www.fsc.org)  
 © 1996 Forest Stewardship Council

### Drive change.

It's about making things better. It's about thinking big, no matter how small you start. It's what took us from our first bicycle in 1952 to the vehicles we make today. It's what Kia Motors Corporation has always been about.

Kia builds quality vehicles for the young-at-heart, led by world-class design and adherence to the highest standards of corporate responsibility. Together, these commitments drive our ongoing development of state-of-the-art, eco-friendly cars to meet the global demand for compact, fuel-efficient vehicles. They also guide our community relations efforts around the world, including a unique, made-in-Canada program promoting multi-cultural understanding through Kia's active support of sports, environmental issues, health initiatives and education projects across Canada.

