

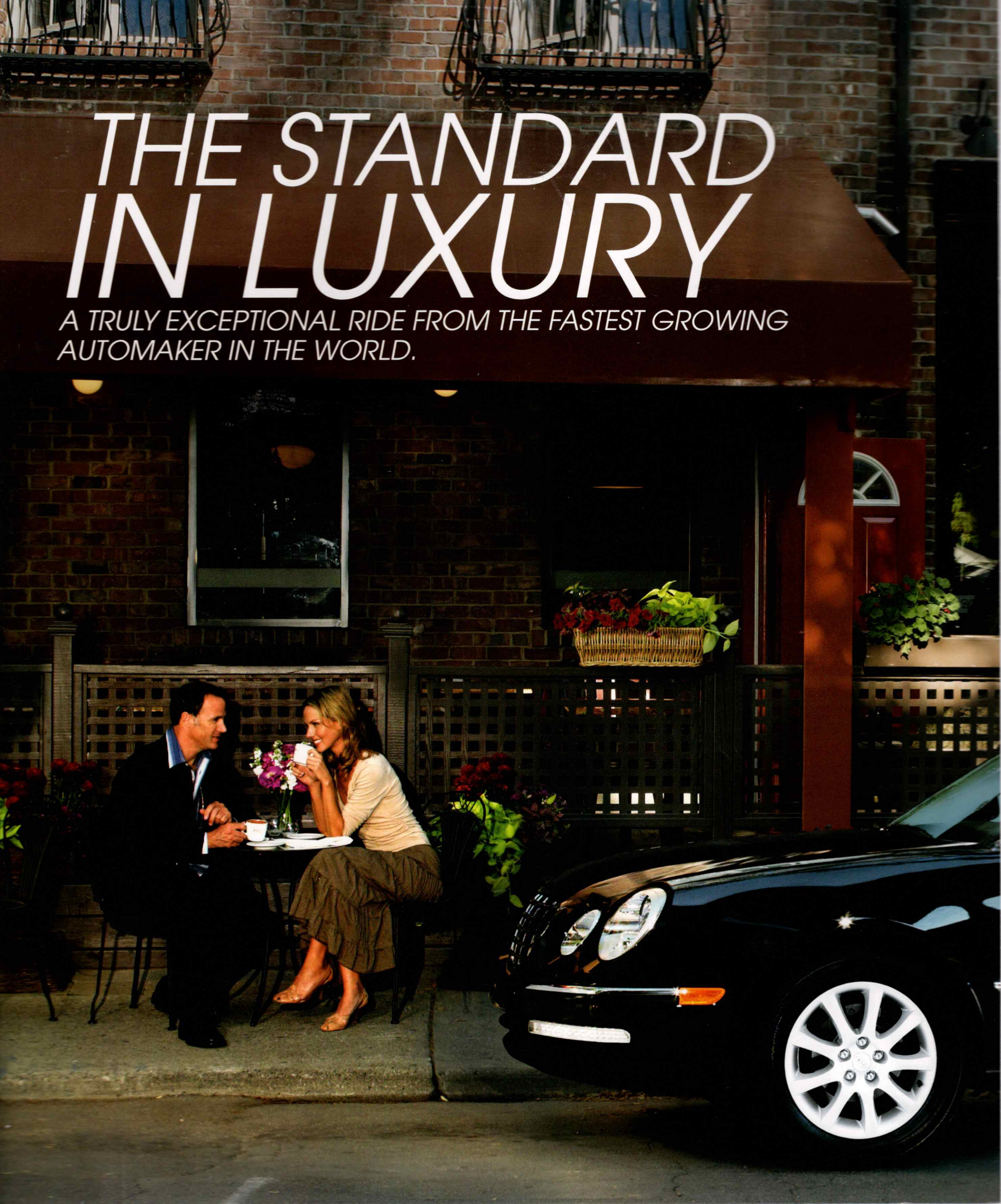
THE 2007 AMANTI



KIA MOTORS
The Power to Surprise™

THE STANDARD IN LUXURY

A TRULY EXCEPTIONAL RIDE FROM THE FASTEST GROWING
AUTOMAKER IN THE WORLD.



THE 2007 AMANTI

The Kia Amanti gives you refined luxury both inside and out. The advanced safety systems protect everyone from all angles with a comprehensive range of standard features. The smooth suspension and performance of the 3.8 L DOHC 264-horsepower V6 engine provide a silent and stable driving experience. The interior, both stylish and spacious, offers more conveniences than you would expect. The driver is fully equipped for the ride with a wide-range of easily accessible controls. Drive confidently with Kia's 5-year/100,000 kilometre comprehensive Total Care Ownership Coverage. The Amanti is all about who you are.



PREMIUM POWER

AN ENGINE IN TUNE WITH YOU.





PERFORMANCE



The 3.8 L 264-horsepower V6 engine with 260 lb.-ft. of torque gives you the exceptional performance you expect from a luxury sedan. The electronic power assisted steering is equipped to sense vehicle speed for improved steering rigidity at higher speeds when changing lanes, passing cars or just cruising. The 5-speed Steptronic automatic transmission provides a more flexible driving experience, giving you the choice between automatic or clutch-free manual shifting. The front independent double-wishbone and rear independent multi-link suspensions provide a stable and comfortable ride. Sound reducing insulation and anti-vibration pads in the doors, roof, pillars, floor and dash combine with a full engine compartment cover to make all of this power remarkably quiet. And the 17" alloy wheels contribute to core stability on the road.



DRIVEN TO PERFECTION

A PERSONALIZED EXPERIENCE EVERY TIME.

THE DETAILS



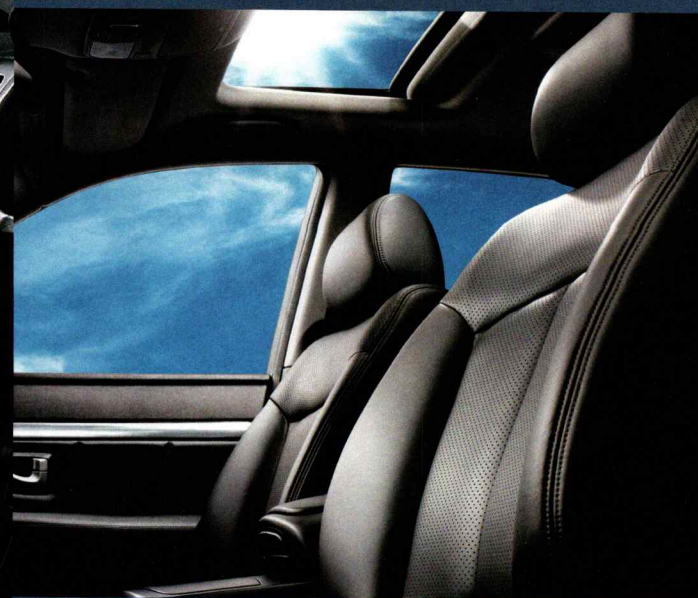
Look forward to every ride in the 8-way power adjustable driver's seat with electronic 4-way adjustable lumbar support with seat memory settings. Feel the warmth of the elegant woodgrain interior accents and leather-wrapped tilt steering wheel with audio controls. Effortlessly operate the front and rear one-touch auto up/down power windows with anti-pinch protection and the power tilt and sliding sunroof. Quickly find what you need any time of day with a well-lit interior. And the LCD monitor, with audio settings display and trip computer provides timely information regarding distance, time traveled, temperature, average speed, range and fuel economy.



GENEROUS COMFORT
LUXURY YOU CAN SHARE.



INTERIOR COMFORT



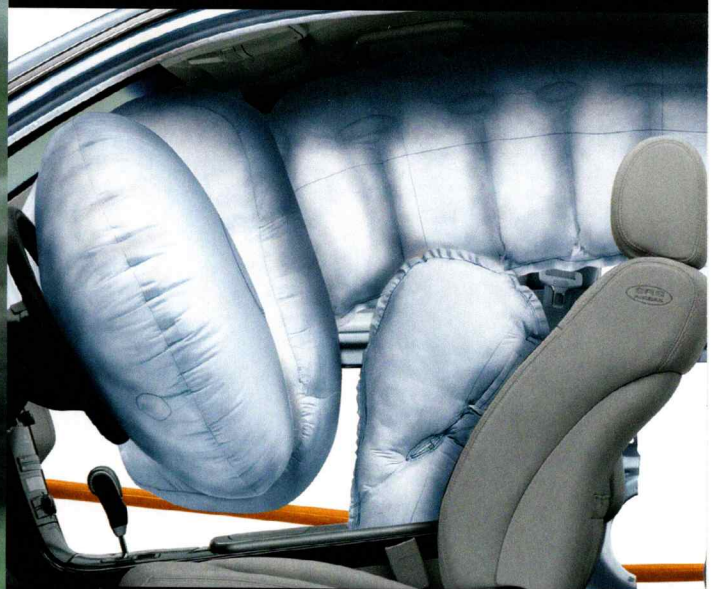
Step into your Amanti quite easily with the assistance of courtesy door lamps and seating with heightened hip-point ground clearance. Everyone will enjoy the ergonomically designed 4-way power adjustable front passenger seat and the rear seats with a fold-away rear centre armrest with storage and dual cup holders. The temperature is just right with dual zone automatic temperature control. Quickly load cargo into the remote release, illuminated trunk and easily transport long or bulky items using the rear seat pass-through. Everything remains well organized in the centre console storage and lockable glove box. Then sit back and relax with premium sound from the AM/FM/CD stereo with the 9-speaker Infinity system including a subwoofer.



ALL ENCOMPASSING

PROTECTION FROM EVERY DIRECTION.

SAFETY



The Amanti's advanced safety systems set the standard in safety. The Amanti is equipped with anti-whiplash active front headrests, dual advanced front airbags, dual front and dual rear seat-mounted side airbags and dual full-length side curtain airbags. The 4-wheel Anti-Lock Braking System (ABS) with a Brake Assist System (BAS) provides greater vehicle control when stopping in difficult conditions. The Electronic Stability Control (ESC) with the Traction Control System (TCS) adjusts engine power and braking force accordingly to improve directional stability on slippery surfaces. Front fog lights, front windshield wiper de-icer and heated side mirrors improve visibility during inclement weather. And rest assured we have you covered with an anti-theft engine immobilizer and 24-hour roadside assistance.

SAFETY

2007 KIA AMANTI

FEATURES

EXTERIOR

AMANTI

17" alloy wheels	S
Body-colour door handles with chrome accents	S
Chrome gas-strut hood & trunk lifters	S
Dual power heated side mirrors	S
Power tilt and sliding sunroof	S
Xenon High intensity discharge (HID) headlamps	S
Solar glass windshield	S
Front fog lights	S
Front windshield wiper de-icer	S
Rear window defroster with timer	S
Front and rear mud guards	S

CONVENIENCE AND COMFORT

Cruise control	S
Front and rear one-touch auto-up/down power windows	S
Power door locks with two-turn entry system	S
Remote keyless entry & alarm	S
Remote electric fuel door & trunk releases	S
Leather-wrapped steering wheel	S
Tilt steering column	S
Premium AM/FM/CD stereo with 9 Infinity speakers including subwoofer and amplifier	S
Steering wheel audio controls	S
Iri-glass antenna	S
4 LCD monitor with audio settings display and trip computer	S
Air filter	S
Deluxe door scuff plates	S
Dual front & rear cup holders	S
Dual illuminated vanity mirrors with extensions	S
Dual-zone automatic temperature control	S
Floor mats	S
Front & rear 12-volt power outlets (2)	S
Glove box with lock, illumination, and damper	S
Map/dome/courtesy/foot well/glove-box/cargo lights	S
Overhead sunglass holder	S
Electrochromic, auto-dimming rearview mirror	S
Homelink® system	S
Deluxe dual memory settings for driver's seat & side mirrors	S
Supervision electroluminescent gauge cluster	S

SEATING AND TRIM

AMANTI

8-way power adjustable driver's seat with electric lumbar support	S
4-way power adjustable front passenger's seat	S
Heated front seats with adjustable driver and passenger controls	S
Leather seats	S
Centre console armrest with two-bin storage	S
Fine aluminum accents (with black interior)	S
Fine woodgrain accents (with grey interior)	S
Fold-away rear centre armrest with storage bin and dual cup holders	S
Rear-seat ski pass-through	S

RESTRAINT AND SAFETY SYSTEMS

Dual advanced front airbags	S
Dual front & dual rear seat-mounted side airbags	S
Dual full-length side curtain airbags	S
4-wheel Anti-Lock Braking System (ABS)	S
4-wheel disc brakes	S
Anti-pinch windows	S
Energy-absorbing steering column	S
Engine immobilizer	S
Anti-whiplash active front headrests	S
Front seatbelt buckle sensors	S
Front seatbelt pretensioners with force limiters	S
Internal emergency trunk release	S
Lower Anchors & Tethers for Children (LATCH)	S
Rear child-safety door locks	S
Side-impact door beams	S
Front & rear crumple zones	S
Electronic Stability Control (ESC)	S
Traction Control System (TCS)	S
Brake Assist System (BAS)	S

S = Standard

TOTAL CARE OWNERSHIP COVERAGE



- 5-YEAR/100,000 KM WORRY-FREE COMPREHENSIVE WARRANTY
- 5-YEAR/100,000 KM POWERTRAIN WARRANTY
- 5-YEAR/100,000 KM EXTRA CARE ROADSIDE ASSISTANCE

SPECIFICATIONS

ENGINE

Type	3.8 L V6, aluminum block and aluminum heads
Valve gear	24-valve, DOHC, Dual Continuously Variable Valve Timing (CVVT)
Horsepower	264 hp @ 6,000 rpm
Torque	260 lb.-ft. @ 4,500 rpm
Displacement	3778 cc
Transmission	5-speed Steptronic automatic, electronically controlled overdrive
Fuel tank capacity	70 L (18.5 gal.)

DIMENSIONS

Wheelbase	2,800 mm (110.2 in.)
Track (front/rear)	1,580 / 1,590 mm (62.2 / 62.6 in.)
Length	5,000 mm (196.8 in.)
Width	1,850 mm (72.8 in.)
Height	1,485 mm (58.5 in.)
Ground clearance	165 mm (6.5 in.)
Leg room (front/rear)	1,130 / 936 mm (44.5 / 36.9 in.)
Head room (front/rear)	1,015 / 970 mm (40.0 / 38.4 in.)
Shoulder room (front/rear)	1,475 / 1,460 mm (58.1 / 57.5 in.)
Hip room (front/rear)	1,402 / 1,386 mm (55.2 / 54.6 in.)
Cargo capacity	450 L (15.9 cu. ft.)

CURB WEIGHT

5-speed automatic	1,790 kg (3,946.3 lb.)
-------------------	------------------------

BODY AND CHASIS

Layout	Front engine, front-wheel drive
Body type	Unibody
Front suspension	Independent, double-wishbone, coil springs, stabilizer bar
Rear suspension	Independent, multi-link, coil springs, stabilizer bar
Steering type	Rack-and-pinion, power assisted, vehicle speed sensing

BRAKES

Type	Hydraulic, power-assisted vacuum; 4-sensor, 4-channel ABS
Front	303 mm (11.9 in.) vented discs
Rear	284 mm (11.2 in.) discs

TIRES

Size	P235/55 R17
------	-------------

FUEL ECONOMY

(CITY/HIGHWAY L/100KM)

5-speed automatic	12.6 / 8.2 L (22.4 / 34.4 mpg)
-------------------	--------------------------------

COLOURS

INTERIOR



Grey Leather



Black Leather

Interior fabric and exterior paint combinations are indicated by: **G** = Grey interior **B** = Black interior
M = Metallic paint **P** = Pearl paint

EXTERIOR



Bright Silver

G (M)



Black Orchid

B (M)



Midnight Grey

B (M)



White Pearl

G (P)

Actual vehicle colours may vary from printed brochure.

THE POWER TO SURPRISE

QUALITY AND VALUE ARE THE CORNERSTONES OF KIA'S SUCCESS.



Canadian Headquarters

Kia is the fastest growing automaker in the world, with more than 1.2 million vehicles sold globally each year. After more than half a century of producing quality vehicles, Kia has distributors and dealers in over 180 countries. Kia vehicles are becoming a growing presence on Canadian roads — there are over 150,000 proud Kia owners and more than 150 dealers across Canada. North American research and design takes place at the company's state-of-the-art, 90,000 sq. ft. Design and Technical Centre in California where relentless innovation continues to fuel Kia's "Power to Surprise."

Hybrid and electric vehicles, light-weight cars and aluminum space frames are among the many innovations our engineers are aggressively researching to create lightweight, recyclable and environmentally friendly cars.

In our ongoing effort to build great cars, while respecting the planet, Kia's fuel cell vehicle development program will soon allow our customers to significantly lower their fuel costs while at the same time play a leading role in environmental protection. Numerous advanced performance features show Kia's commitment to providing you with a safe yet exhilarating driving experience. The available Electronic Stability Program (ESP), for example, delivers enhanced directional stability for greater vehicle control.



THE FASTEST GROWING AUTOMAKER IN THE WORLD



Sorento



Sedona



Amanti



Magentis



Sportage



Spectra 5



Rio 5



Rio



Spectra



Rondo



PEACE-OF-MIND MOTORING

Kia's Total Care Ownership coverage includes:

- 5-year/100,000 km - Worry-free comprehensive warranty covering virtually the entire vehicle.*
- 5-year/100,000 km - Powertrain warranty covering the engine, transmission, axles, differentials and driveshafts.*
- 5-year/100,000 km - Roadside assistance covers you in case of mechanical breakdown anywhere in North America.
- 5-year/unlimited km - Anti-perforation warranty on body sheet metal defects in material/workmanship.*

Kia completes the "peace-of-mind" coverage with a national dealer network. So wherever you need us - from Whitehorse to Windsor and from Victoria to St. John's - we'll be there.

For more information visit kia.ca or call 1-877-542-2886

* Some restrictions apply. For more information on our 5-5-5 Total Care Ownership Coverage, call us at 1-877-542-2886. All information contained herein was accurate and correct at the time of printing. Kia Canada Inc. reserves the right to make changes at any time without notice, and without any obligations as to colours, materials, specifications, features, accessories, packages, models and any applicable programs. Some vehicles shown may include optional equipment or may not be exactly as shown. Kia Canada Inc., by the publication and dissemination of this material, does not create any warranties, either expressed or implied, to any Kia products. See your Kia dealer or website for further details. © 2006 Kia Canada Inc. Reproduction of the contents of this material without the expressed written approval of Kia Canada Inc. is prohibited.



KIA MOTORS
The Power to Surprise™

