

THE FUN IS BACK

LIFE IS SUPPOSED TO BE AN ADVENTURE. TAKING THE LONG CUT. GETTING OFF THE ROAD.
MAKING A LEFT WHEN EVERYONE ELSE IS MAKING A RIGHT. THAT'S WHAT MAKES IT EXCITING.

SPORTAGE



THE 2005 KIA SPORTAGE



KIA MOTORS

THERE IS NOTHING WRONG WITH WANTING IT ALL

You want serious fun. Function that holds up to whatever you throw at it. The ability to make everything exactly how you like it. And, you want it to be affordable. No problem. The completely redesigned 2005 Kia Sportage was made for you. Choose between two engine sizes, three trim levels and front-wheel drive (FWD) or all-wheel drive (AWD). Then, flip down the flat-folding seats and load up. As you head off in search of adventure, you'll enjoy the confidence that comes from having 6 standard airbags. And every Kia is covered by Canada's Total Care Coverage.



Sportage LX

It's quite remarkable how all these standard features fit into a compact SUV with room to spare. We're talking split-folding seats, full-flat seat function and more power features than you can shake a stick at — mirrors, windows, locks and more. Then there are ABS, 6 standard airbags and Canada's Total Care Coverage including a 5-year bumper to bumper warranty.



Sportage EX-V6

Sometimes it's more about the journey than the destination. In the Sportage EX-V6, you'll enjoy luxury appointments without compromising the fun. Leather-wrapped steering wheel, heated leather seats, countless standard features and AWD make this compact SUV feel at home whether you are checking into valet parking or into national parks. Of course, the Sportage EX-V6 also comes with 6 standard airbags and Canada's Total Care Coverage.

AT KIA, WE KNOW HOW TO BUILD AN AUTOMOBILE YOU CAN COUNT ON. WITH MORE THAN HALF A CENTURY OF ENGINEERING UNDER OUR BELT, WE USE OUR EXPERTISE TO DESIGN EVERYTHING FROM SUVs AND MINIVANS TO FULL-SIZE LUXURY SEDANS AND SPORTY COMPACTS. AT PRESENT, WE'VE SOLD OVER 2 MILLION KIAs WORLDWIDE — OVER 120,000 OF WHICH YOU'LL FIND DRIVING AROUND CANADA AT THIS VERY MOMENT. IN FACT, KIA HAS MORE THAN 150 DEALERSHIPS ACROSS CANADA. AND IF YOU SHOULD HAPPEN TO BE STANDING IN ONE RIGHT NOW, WE'RE WILLING TO BET THERE'S A KIA THERE WITH YOUR NAME ON IT.



LOOKING FOR THAT SPECIAL KIA BUT NOT READY TO CHANGE OUT OF YOUR PYJAMAS? VISIT WWW.KIA.CA. YOU'LL FIND ALL THE INFO YOU NEED, INCLUDING PERFORMANCE DETAILS OF THE VEHICLES YOU'RE INTERESTED IN. YOU CAN ALSO FIND THE DEALER NEAREST YOU AND CALCULATE YOUR POTENTIAL MONTHLY PAYMENT. WOW, AND YOU HAVEN'T EVEN LEFT THE HOUSE YET!



WHERE ARE YOU GOING?

ANYWHERE AND EVERYWHERE. YOU WANT THE POWER TO CLIMB MOUNTAINS,
NAVIGATE CITIES AND CROSS PLAINS... THE SOONER THE BETTER.



The power to get out there is yours. Jump behind the wheel of the all-new Kia Sportage and the world is at your feet. With an available 2.7 L V6 engine and "TORQUE-ON-DEMAND" automatic full-time 4WD capabilities, there's no stopping you. You can put the 173 horsepower to good use as you escape to greener pastures. Of course, even if you never leave the urban jungle, the Sportage is ready to go. The smooth and responsive ride makes even the shortest trip more exciting. And although we know it's what's inside that counts, we're always quick to point out that Sportage will have you turning heads wherever you go. In fact, with its rugged, stylish design, alloy wheels, privacy glass and fog lamps, affordable has never looked so good. Cottage. Camping. Corner store. Whatever your weekend pursuits, Sportage makes getting there more than half the fun.

Torque-On-Demand is a registered trademark of Rona-Warner Automotive Inc.



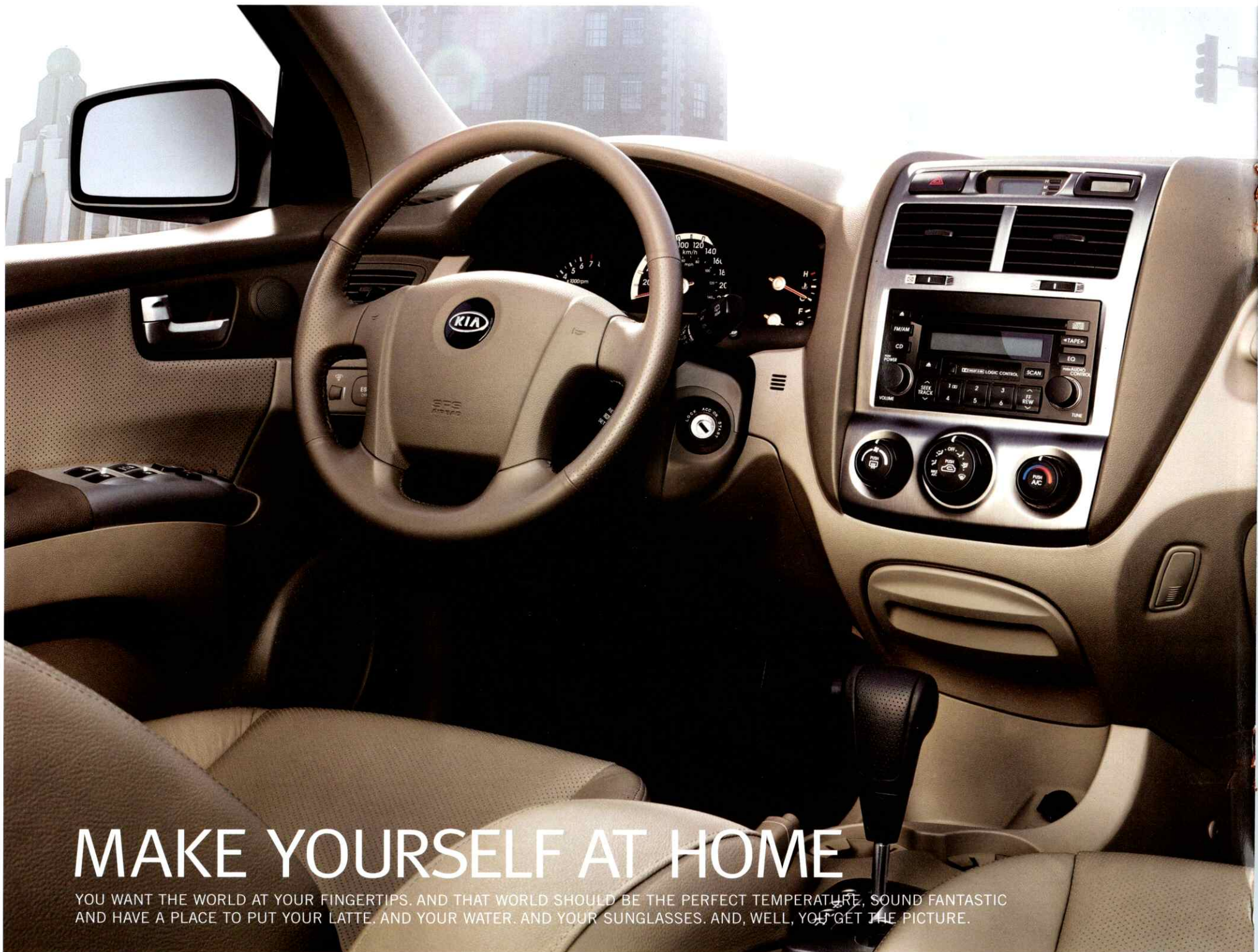
Ready, set, go! Load the Sportage. Unload it. Stretch out. Fold down. Flip up. Invite your friends. Get out of town. When fun is the number-one priority, you need fun stuff to take along for the ride. That's why we've made it easy to make the most of Sportage's interior space. The flat-folding seats give you room to spare and the

60/40 adds versatile options. And if that doesn't give you a good feeling, the comfort of a dual height adjustable driver's seat, a whole slew of innovative storage areas throughout the interior and a 6-speaker CD stereo will. Especially if you opt for leather.



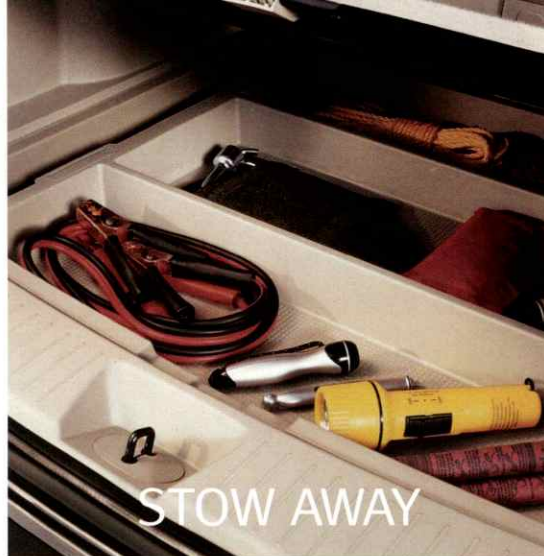
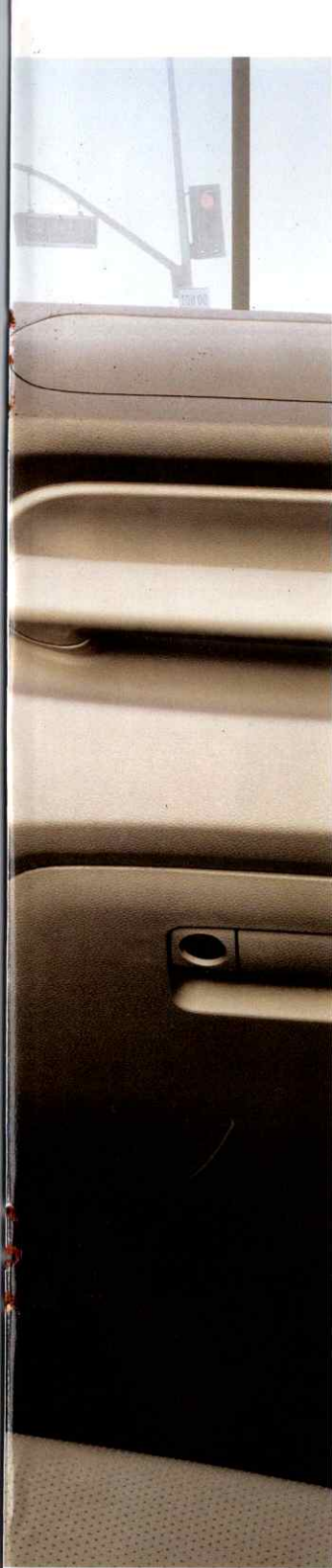
PLAY ROOM

WITH SUCH A BIG WORLD OUT THERE, YOU NEED A BIG WORLD IN HERE.
BECAUSE YOU NEVER KNOW WHAT YOU'LL NEED. OR WHEN YOU'LL NEED IT.



MAKE YOURSELF AT HOME

YOU WANT THE WORLD AT YOUR FINGERTIPS. AND THAT WORLD SHOULD BE THE PERFECT TEMPERATURE, SOUND FANTASTIC AND HAVE A PLACE TO PUT YOUR LATTE. AND YOUR WATER. AND YOUR SUNGLASSES. AND, WELL, YOU GET THE PICTURE.



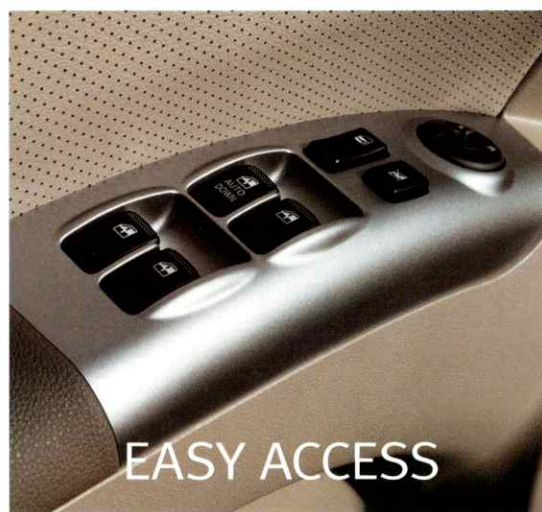
STOW AWAY



KEEP YOUR COOL



LISTEN UP



EASY ACCESS



YOU'RE IN CONTROL

It's easy to get comfortable in the all-new Sportage. And the standard 6-speaker CD player will keep the tunes coming. You can give your feet a rest with cruise control. And power windows, mirrors and door locks give you control at the touch of a button. Oh, speaking of power, there are two 12V power outlets, one in the front and one in the back. You'll also get convenience features like tilt steering, a dual height-adjustable driver's seat and cubbies galore to stow all your gear and gadgets. We're talking map pockets, seat pockets, storage boxes, cup holders, a sunglass holder and a locking glove box. Even a rear under-cargo floor storage compartment. Want more features? Get the convenience package. Standard air conditioning will keep you cool as a cucumber. Plus, it includes remote keyless entry, fog lamps, heated outside mirror and deep-tint privacy glass.

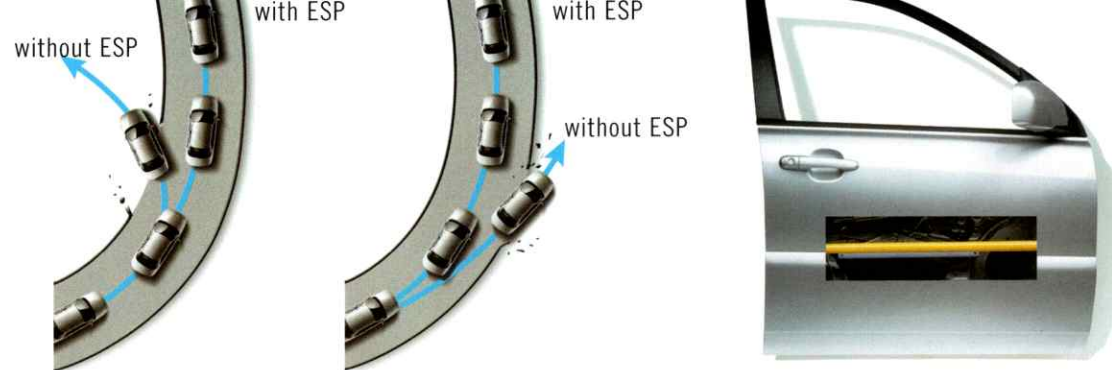
Sure, you may not be forging your own path from Newfoundland to BC, but every now and again you want to drive outside the lines. The all-new Kia Sportage is rip-roaring ready to go. For a trip to the cottage, or a quick negotiation through the urban jungle, when TORQUE-ON-DEMAND® detects slippage, it automatically kicks into AWD. The standard Electronic Stability Program (ESP) and Traction Control System (TCS) provide increased mobility and control by independently braking or powering certain wheels when necessary. This helps make fun the number-one priority, and slipping, sliding and spinning tires a thing of the past.



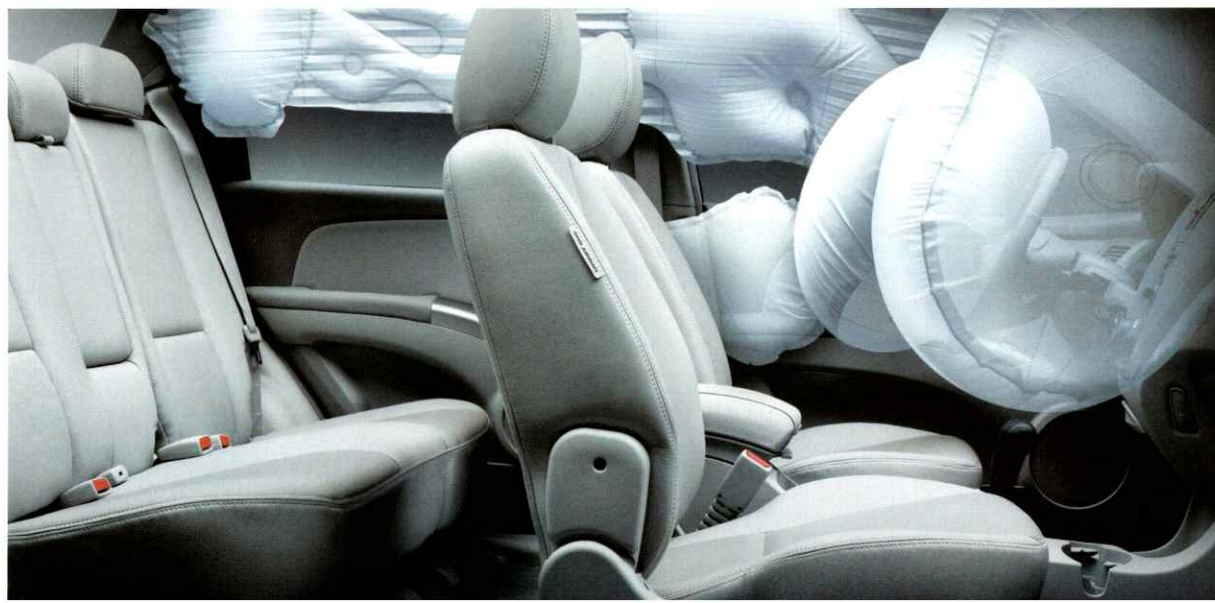
OFF THE BEATEN TRACK

SOMETIMES A LITTLE BUMP IN THE ROAD IS EXACTLY WHAT YOU'RE LOOKING FOR. YOU WANT TO STARE INTO THE EYE OF THE BUMP, HEAD STRAIGHT FOR IT, SHOUTING "AYEEE", AND KNOW WITH ALL CERTAINTY THAT YOU CAN GET OVER THE BUMP WITHOUT SPILLING YOUR COFFEE.





It's not all fun and games. The all-new Kia Sportage is also loaded with features to make you feel safe and secure. Sportage comes equipped with 6 standard airbags to help protect you in the event of a collision. Front and rear side curtain airbags, front seat-mounted side airbags and dual advanced driver and passenger front airbags. How advanced? The dual front airbags work in conjunction with seat track and front seat belt buckle sensors that help control airbag deployment and reduce the risk of injury in a frontal collision. In addition, side-impact bars and reinforced doors help protect you in the event of a side collision. And, Sportage also comes equipped with 4-wheel anti-lock brakes to give you more control when stopping in difficult conditions like wet or slick roads. For improved visibility, windshield wiper de-icer, rear window defroster and a fixed intermittent rear wiper come standard. To help protect little ones, we added rear child-safety door locks and a specially designed anchorage system to give an extra-secure hold on child-safety seats. All with the security of Kia's Total Care Coverage including a 5-year bumper to bumper warranty and 5-year 24/7 roadside assistance.



FEATURES



LX

LX FEATURES

- 2.0 L 4-cylinder CVT engine
- Front-wheel-drive system (FWD)
- 5-speed manual transmission
- 16" alloy wheels, P215/65 R16
- Dual front airbags
- Dual side-impact airbags
- Dual side curtain airbags
- 4-wheel anti-lock brakes (ABS)
- Electronic Stability Program (ESP)
- Traction control
- Cruise control
- Power windows
- Power door locks
- Multi-adjustable fold-flat rear seats
- Fold-flat front passenger seat
- AM/FM/CD 6-speaker audio
- Front windshield wiper de-icer
- Rear wiper

LX CONVENIENCE FEATURES

(IN ADDITION TO OR IN PLACE OF LX FEATURES)

- Available 4-speed Steptronic automatic transmission
- Air conditioning
- Remote keyless entry
- Door courtesy lamp
- Chrome-coated inner door handles
- Deep-tint privacy glass
- Heated outside mirrors
- Fog lamps
- Door scuff guards

LX AWD CONVENIENCE FEATURES

(IN ADDITION TO OR IN PLACE OF LX CONVENIENCE FEATURES)

- All-wheel-drive system (AWD) with electronically controlled Torque-On-Demand®
- 5-speed manual transmission



EX-V6

LX-V6 FEATURES

(IN ADDITION TO OR IN PLACE OF LX CONVENIENCE FEATURES)

- 2.7 L 6-cylinder DOHC engine
- Front-wheel-drive system (FWD)
- 4-speed Steptronic automatic transmission
- Roof rack
- Cargo area cover

LX-V6 AWD FEATURES

(IN ADDITION TO OR IN PLACE OF LX-V6 FEATURES)

- All-wheel-drive system (AWD) with electronically controlled Torque-On-Demand®

EX-V6 AWD FEATURES

(IN ADDITION TO OR IN PLACE OF LX-V6 FEATURES)

- Leather seats
- Heated front seats
- Trip computer
- Luggage net
- Woodgrain interior centre fascia and door switch panels
- Body-colour exterior door handles
- Body side cladding
- Power sliding and tilting sunroof
- BF Goodrich tires P235/60 R16
- Leather-wrapped steering wheel and gear shift knob
- MP3 player with AM/FM/CD/Cassette

SPECIFICATIONS

ENGINE	LX & LX CONVENIENCE	LX-V6 & EX-V6
Type	2.0 L, In-line 4-cylinder, CVT, Aluminum head	2.7 L, V6 Aluminium block and head
Valve gear	DOHC, 4 valves per cylinder	DOHC, 4 valves per cylinder
Displacement	1,975 cc/120.52 cu. in.	2,656 cc/162.08 cu. in.
Compression ratio	10.0:1	10.0:1
Horsepower	140 hp @ 6,000 rpm	173 hp @ 6,000 rpm
Torque	136 lb.-ft. @ 4,500 rpm	178 lb.-ft. @ 4,000 rpm
Fuel tank capacity	58 L (15.3 gal.)	65 L (17.2 gal.)
Transmission	5-speed manual 4-speed Steptronic automatic (available)	4-speed Steptronic automatic

DIMENSIONS (EXTERIOR AND INTERIOR)

Wheelbase	2,630 mm (103.5 in.)
Track (front/rear)	1,540/1,540 mm (60.6/60.6 in.)
Length	4,350 mm (171.3 in.)
Width	1,800 mm (70.9 in.)
Height	1,695 mm (66.7 in.)
Ground clearance	195 mm (7.7 in.)
Head room (front/rear)	1,033/1,000 mm (40.7/39.4 in.)
Shoulder room (front/rear)	1,440/1,430 mm (56.7/56.3 in.)
Leg room (front/rear)	1,070/945 mm (42.1/37.2 in.)
Hip room (front/rear)	1,386/1,388 mm (54.6/54.6 in.)
Passenger volume	2,943 L (103.9 cu. ft.)
Cargo volume	667.4 L (23.6 cu. ft.)

CURB WEIGHT

5-speed manual	2.0 L I-4 FWD: 1,465 kg (3,230 lb.) 2.0 L I-4 AWD: 1,547 kg (3,411 lb.)
4-speed automatic	2.0 L I-4 FWD: 1,476 kg (3,254 lb.) 2.7 L V6 FWD: 1,520 kg (3,351 lb.) 2.7 L V6 AWD: 1,600 kg (3,527 lb.)

BODY AND CHASSIS

Layout	Front engine
Body type	Steel unitized
Front suspension	Independent, MacPherson struts, coil springs
Rear suspension	Independent, dual link
Steering	Power-assist, rack-and-pinion

BRAKES

Type	Dual diagonal, split circuit, power-assisted braking system
Front	297 mm (11.0 in.) vented discs
Rear	262 mm (10.3 in.) vented discs (FWD) 284 mm (11.2 in.) vented discs (AWD)
ABS	4-wheel anti-lock brakes

TIRES

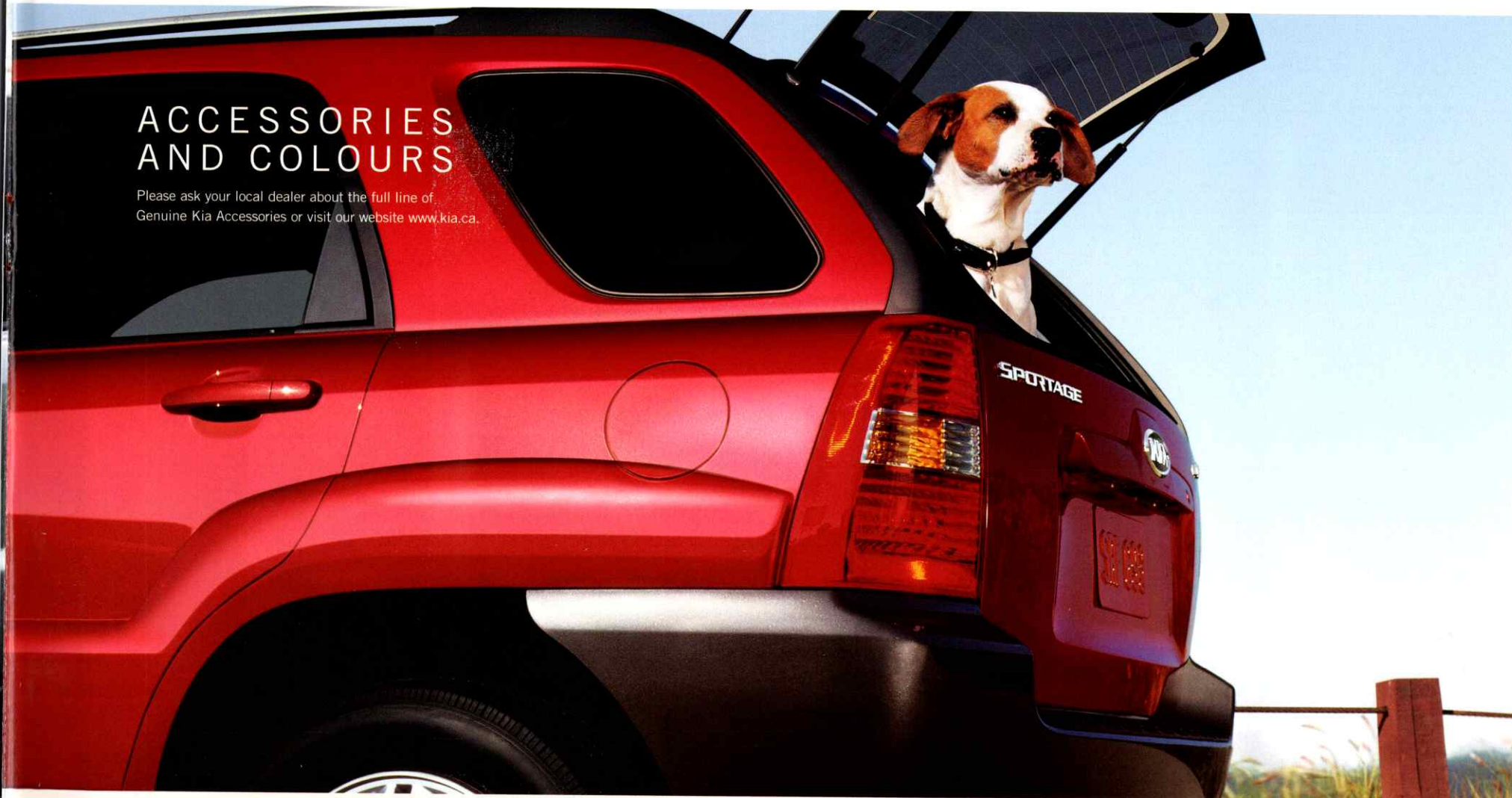
Tires	LX, LX-Convenience & LX-V6: P215/65 R16 EX-V6: P235/60 R16
-------	---

FUEL ECONOMY (CITY/HIGHWAY L/100 KM)

5-speed manual	LX & LX-Convenience: 10.6/7.8 L (26.7/36.2 mpg) (FWD) LX & LX-Convenience: 11.2/8.2 L (25.2/34.4 mpg) (AWD)
4-speed automatic	LX & LX-Convenience: 11.1/8.2 L (25.4/34.4 mpg) (FWD) LX-V6 & EX-V6: 12.1/8.5 L (23.4/33.2 mpg) (FWD) LX-V6 & EX-V6: 12.4/9.4 L (22.8/30.1 mpg) (AWD)

ACCESSORIES AND COLOURS

Please ask your local dealer about the full line of
Genuine Kia Accessories or visit our website www.kia.ca.



EXTERIOR COLOURS



CLEAR WHITE
(Black Interior)



STEEL GRAY
(Black Interior)



SATIN SILVER
(Black Interior)



VOLCANIC RED
(Black Interior)



CHAMPAGNE
(Beige Interior)



SMART BLUE
(Black Interior)



BLACK CHERRY
(Beige/Black Interior)

INTERIOR COLOURS



BEIGE CLOTH



BLACK CLOTH



BEIGE LEATHER



BLACK LEATHER

NOTE: availability, specifications, materials and colours are subject to change without notice. Kia Canada Inc. is not responsible for any errors or omissions.

1-877-542-2886

TO FIND OUT MORE ABOUT ALL OUR VEHICLES, JUST VISIT OUR WEBSITE OR GIVE US A CALL



PEACE OF MIND

5 YEARS OF IT TO BE EXACT. 5 YEARS OR 100,000 KILOMETRES OF WORRY-FREE ADVENTURE. NOW THAT'S WHAT I CALL A COMMITMENT.

Kia's national dealer network is made up of over 150 locations across Canada. No matter which road you find yourself on in Canada — or anywhere in North America — you can rest assured Kia is wherever you need us to be. You have our word, our ownership coverage and our coast-to-coast representation in place to add even more value to your already sound Kia investment.



CANADA'S TOTAL CARE COVERAGE

5-YEAR/100,000 KM BUMPER TO BUMPER WARRANTY

5-YEAR/100,000 KM POWERTRAIN WARRANTY

5-YEAR/100,000 KM EXTRA CARE ROADSIDE ASSISTANCE



RIO RX-V



SORENTO



SPORTAGE



SEDONA



SPECTRA5



RIO



MAGENTIS



AMANTI



SPECTRA

