



Experience the new Kia

**OPIRUS**



## Provenance

Experience a new definition of prestige and elegance, in an automobile that will redefine your expectations of luxury and refinement. Take a closer look and discover the world of the Opus.

## Posture

Introducing the Opirus, an automobile of exceptional luxury, comfort and sophistication. Built to the highest level of quality and excellence, the Opirus takes its place as the new flagship for Kia.





## Commencement

Ready to take you to new heights in comfort and style, the Opus invites you to experience the soothing pleasure of driving one of the most finely crafted automobiles available for the road today.



## Advancement

The Opirus delivers powerful performance coupled with state of the art safety technology for an exhilarating and secure driving experience.







## Engagement

The comfort and richness of the Opirus is not meant to distance you from the experience of driving. Rather, every detail has been carefully tailored to enhance your ability to take command of the road and your journey.





# Composure

The journey begins when you open the door and enter the sanctuary of the Opirus. Behold the rich detail that makes the Opirus so remarkable. The elegance of the exterior is matched only by the refinement of the interior. Spacious and comfortable, the Opirus represents the utmost in value without compromises.

>> Interior Dimensions

Head room - Front 1 015mm / Rear 975mm  
Leg room - Front 1 110mm / Rear 945mm  
Shoulder room - Front 1 475mm / Rear 1 460mm







## Instinctive

The driving environment you have dreamed of. Simple yet sophisticated. Ergonomically designed controls enable you to keep your attention on driving. The center fascia is positioned forward for closer reach with thoughtfully arranged buttons for ease of operation.

The dual zone climate control system automatically adjusts to ensure that all occupants can enjoy their own level of comfort. The multi-function display allows you to see all pertinent data without having to take your eyes away from the road. Kia's super vision cluster sports impressive electro luminescent gauges, providing excellent clarity in both day and night driving.



**Dual Zone Automatic Climate Control**

The Optima features dual zone climate control system that allows temperature and ventilation for the driver and front passenger to be controlled independently. The special Air Quality System filters incoming air and generates negative ions and gentle winds to provide a refreshing environment inside the cabin at all times.



1	2	3
4	5	6

1. IMS (Integrated Memory System)
2. Lumbar Support
3. Rear Side Headrests
4. Flat Flat Reclining Seat
5. Rear Center Armrest
6. Seat Warmer (Front & Rear)

## Refined

Every time you step into the Opirus, you will be cradled in a level of comfort that makes every drive relaxing and pleasant. Seating is designed to reduce fatigue while providing ample support.

The Opirus is equipped with power adjustable seats at the front with intuitive controls mounted on the doors. As an added convenience for the driver, the Opirus offers an Integrated Memory System that stores up to two preset seating positions at the touch of a button. Driver and front passenger seats include power adjustable lumbar support via a switch located on the side of the seat, enabling occupants to set the amount of support they desire to help reduce back strain and fatigue especially on longer trips. The front passenger seat also is capable of full flat positioning. Headrests are adjustable for both front and rear seats, and passengers in the back enjoy the added luxury of privacy for the side and rear windows. Seat warmers are available for both front and rear occupants, with individual controls for each seat and five levels of temperature adjustment. The rear center armrest houses cup holders and a compartment.



>> 8 way Power Seat  
(Sliding, Reclining and Seat Height Adjustable)



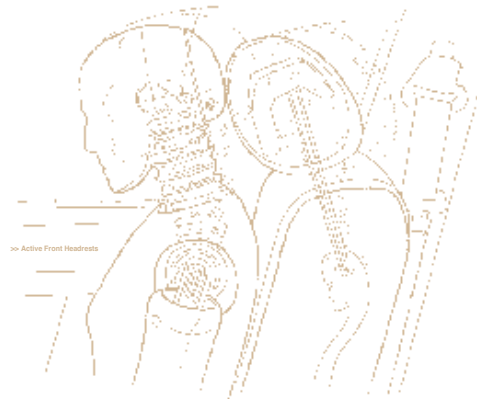


- |   |   |   |
|---|---|---|
| 1 | 2 | 3 |
| 4 | 5 |   |
- 1. Airbags
  - 2. Active Front Headrests
  - 3. Roll Sensor
  - 4. Pretensioners and Load Limiters
  - 5. Safety Power Windows

## Secure

At times, the roads can seem like a battleground. At Kia, we know how important it is for you to have the peace of mind that you are driving a safe car. That is why the Opirus is fitted with the latest technology to keep occupants secure in the event of a collision.

The Opirus can be equipped with up to eight airbags including dual threshold driver and front passenger airbags, side and curtain airbags. The Opirus also features active headrests which automatically move forward and up in the event of a rear impact collision. Three point seatbelts are standard for front and rear passengers, including the middle seat passenger in the back. Seatbelts feature pretensioners that tighten when sensing deceleration to limit the body's movement at the moment of impact, and load limiters that then allow the belt to extend just enough to reduce the amount of pressure against the occupant's body, reducing the risk of injury from the seatbelt itself. For an extra measure of protection, the Opirus is equipped with a safety feature for the power windows that upon sensing an obstruction when closing, such as a child's arm, will immediately re-open.





# Infallible



## >> Safety Features

- Active Safety Features >
- Electronic Stability Program
- Brake Assist System
- Anti-lock Brake System
- Traction Control System
- High Intensity Discharge Headlamps
- Headlamp Auto Leveling System
- Headlamp Washer
- Backup Warning Sensor
- Auto Light Control System

## < Passive Safety Features >

- Dual Threshold Front Airbags
- Front Side Airbags
- Rear Side Airbags
- Curtain Airbags
- Pretensioners and Load Limiters
- Active Headrests
- Reinforced One-piece Side Outer, Inner Panel
- 7-way Energy Path System
- 5 mile Safety Front Bumper

Beneath the skin of the Opikus lies an intricately reinforced structure designed to protect occupants during an accident. Using a computer designed monocoque chassis, the passenger compartment is built to maintain its integrity in the event of a collision. Front and rear crumple zones absorb and disperse collision forces from direct and offset collisions. Side impact bars and reinforced pillars also provide protection against side impact collisions.

Collisions up to 5 mph to the front or rear are deflected thanks to energy absorbing bumpers.



# Emergence

Strong, fluid lines characterize the distinctive exterior of the Opirus. With a Neo-Classical style recalling the timeless sedans of Europe, the Opirus is a modern interpretation of the classic luxury sedan.





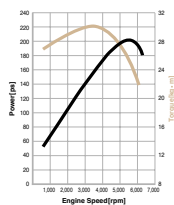
## Robust

The Opirus technologically advanced, the Sigma 3.5 liter V6 DOHC engine yields outstanding power while maintaining the quietest operation. Mated to a 5 speed automatic transmission with the choice of switching between pure automatic or the more engaged feeling of sequential manual sport shifting, the Opirus can adapt to your mood with the simple lateral movement of the gear selector.

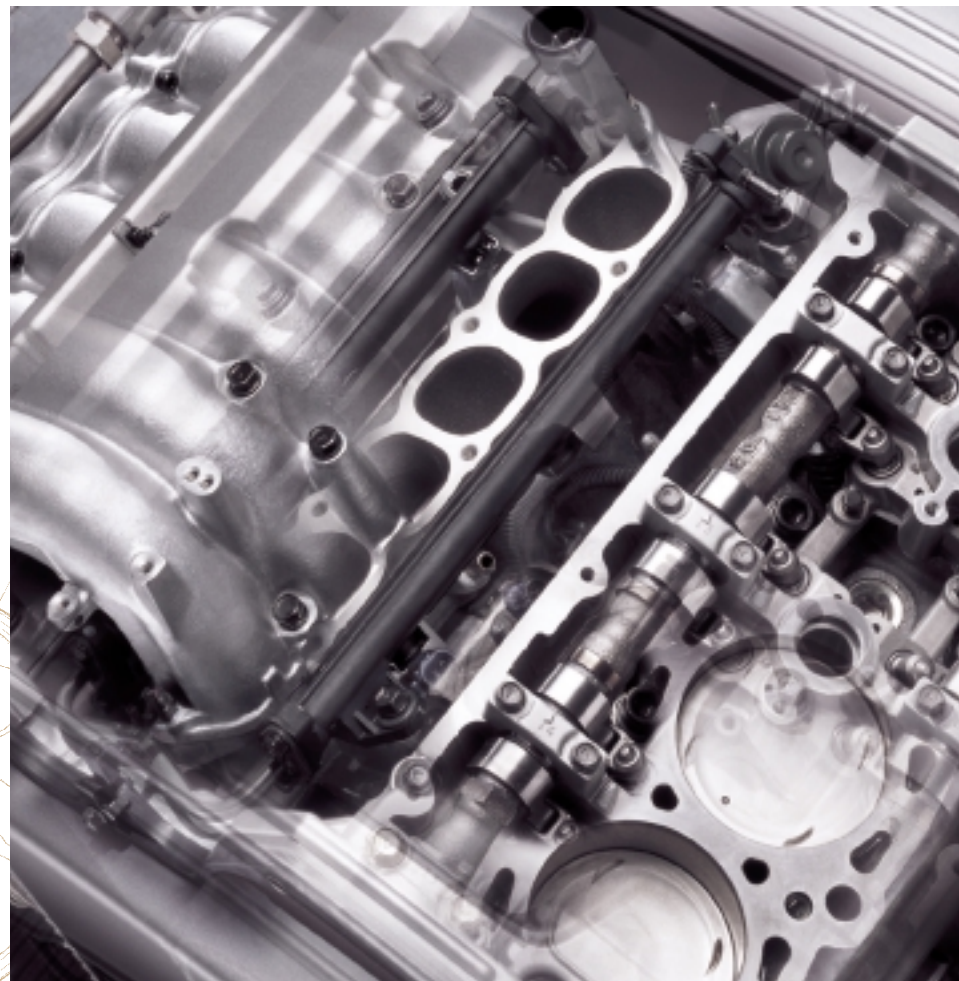
As you would expect from a premium automobile, many innovative features have been implemented to allow full expression of the Opirus' capabilities while maintaining the quietest operation. The attractive engine cover not only enhances the appearance of the engine bay, but also aids in dampening sound. The radiator fan uses a wave type blade that improves airflow and reduces noise by 2dB. And the exhaust system includes a muffler with a special valve that cuts down exhaust noise by remaining closed at lower speeds.

### >> Powerful 3.5 V6 Engine

Powered by Kia's Sigma 3.5 liter V6 DOHC engine, the Opirus puts out an impressive 203 hp at 5,500 rpm and 30.4 kg m at 3,500 rpm. The engine is tuned to deliver smooth and positive acceleration throughout the powerband that's easy to control in traffic around town and inspiring when setting out on the open highway.



>> Low-noise Cooling Fan







- |   |   |   |
|---|---|---|
| 1 | 2 | 3 |
|---|---|---|
- 1. EPS (Electronic Power Steering)
  - 2. ECS (Electronic Control Suspension)
  - 3. ABS (Anti-lock Brake System)

## Balanced

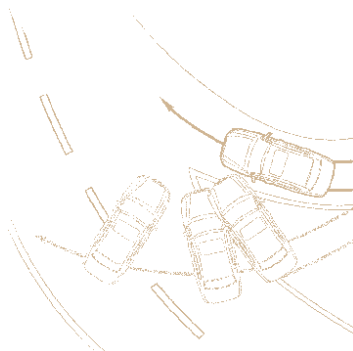
Keeping you firmly on the road, the Opus sports a sophisticated fully independent double wishbone front and multi-link rear suspension featuring gas pressurized shock absorbers and front and rear anti-roll stabilizer bars. To further enhance handling and provide a more comfortable ride, the Opus comes with an electronically controlled suspension system that helps keep the car level at all times. The system helps to counteract forces such as front-end dive when braking heavily, rear-end squatting when accelerating hard and body roll when cornering.



300 ESP (Electronic Stability Program)

The ESP system helps to give the driver directional stability to control the car in the event of a severe skid. The ESP system achieves this by monitoring and controlling key functions of the vehicle such as brake force pressure and engine power.

Riding on 16 inch alloy wheels wrapped in 225/60 radial tires, the Opus hugs the road, for a confidence-inspiring level of agility and control. Electronic Power Steering lightens the wheel at lower speeds to make turning easier. At higher speeds, the steering becomes progressively heavier to enable the driver to control the car with more precision. An Electronic Stability Program helps you maintain control of the car during a skid by monitoring the vehicle's traction and the driver's intentions at all times through sensors in the wheels and driver controls, and then adjusts engine power and braking to help you regain stability. When needing to make a sudden stop, the Brake Assist System allows you to apply full pressure to the brake pedal and then modulates the braking force of the 4 wheel disc brakes to give you the maximum stopping power without skidding.





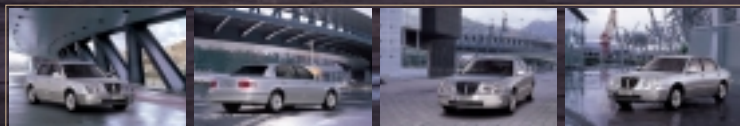
## Illuminated

Sitting behind the wheel of the Opirus, you will be dazzled by Kia's all new super vision cluster. Using an electro-luminescent instrument panel, you will be pleasantly surprised by the improved legibility in both day and night driving.



## Distinguished

An automobile with personality and dignity, the Omega has a presence that communicates who you are with every beautifully sculpted curve and detail.









## Onward

The Opirus begins a new chapter in the history of Kia Motors. It is the culmination of years of development, to give you a car that will take you to the next stage of your life's glorious journey.





## Tranquil

In the sanctuary of the Opirus, you can relax and enjoy the peace and quiet of world class comfort and refinement. Kia's engineers have looked after every detail to reduce noise and vibration to ensure the most soothing experience you can have in an automobile.





# Equipment

## EXTERIOR FEATURES



### Radiator Grille

The assertive trapezoidal radiator grille dominates the front view. The grille has a distinctive chrome finish for added impact and greater refinement.



### Dual Headlamps

Twin oval shaped headlamps create an elegant, neo-classical appearance. The outer lamps house brilliant HID headlamps and sharp projection fog lamps, while high beams are projected from the inner set of oval lamps.



### Rear Combination Lamps

The rear of the Oprius continues the classic look of the front with circular shaped rear combination tail lamps. The taillights are protected by a clear polycarbonate lens cover and embellished with jewel-like faceted detailing that imparts an upscale appearance and a stylish, polished appeal.



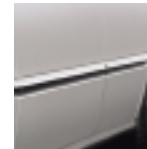
### Outside Door Handles

The door-handles are pull-type, which, combined with the remote locking system, makes entering the car easy even when carrying other items.



### LED Turning Signal Lamps

Elongated LED turn-signal lamps highlight the prestigious styling of the car while providing superior visibility to oncoming vehicles.



### Body Side Molding

One piece side molding is matched to the car's body color and provides splash protection. A wide chrome side protector further enhances the side view.



### Side Windows

The side window is emphasised by a blacked out doorframe and B-pillar, which gives the impression of a single window extending the length of the car.



### LED type High Mounted Stop Lamp

For added safety, the Oprius comes with a high mounted stop lamp located in the rear panel tray to improve visibility for following vehicles.



### Unique C-pillar

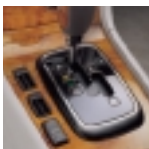
The impressive design of the C-pillar truly sets the Oprius apart. Beautifully sculpted for an elegant appearance, the C-pillar's strong outward curve yields greater interior room for rear passengers.



### Rear Garnish

Adding impact to the trunk, the rear garnish houses the license plate in a handsomely chrome plated frame with integrated lamps.

## INTERIOR FEATURES



### 5 Speed Automatic Transmission

Using a highly advanced five speed automatic transmission with the choice of switching between pure automatic or the more engaged feeling of sequential manual sport shifting, the Opirus can adapt to your preference with a simple lateral movement of the gearshift lever. In the sports mode, the driver simply nudges the lever forward or backward to change gears.



### Center Armrest

The Opirus comes with a large and amply padded front center armrest providing exceptional comfort to make your commute a more relaxing experience. The center armrest is finished in exquisite detail matching the upholstery of the seating and trimmed in fine wood grain. Inside the armrest you will find a convenient two level storage bin including a cool box for keeping beverages chilled.



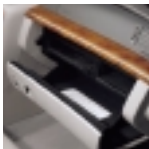
### Sunglasses Case

Located just above the rear view mirror for easy access, the handy storage case provides a safe and secure place to keep your sunglasses so they won't get scratched from being stored with other items.



### Power Window Switch

The power windows on the Opirus feature one touch full up and down functions and window locks. The windows remain active for thirty seconds after the ignition has been turned off.



### Glove Box

For added security such as when the vehicle is valet parked or driven by another person, a switch in the glove box allows both the glove box and trunk to be locked together, isolated from the ignition, and can only be opened with a separate key.



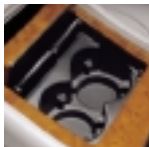
### Cool Box

Located inside of the front center armrest is a two-level storage area including a cool box that's ideal for keeping beverages chilled while you're travelling on the road.



### Door Map Pockets

Front and rear doors feature folding map pockets for added convenience. The hard-cased containers fold out from the door to easily accommodate bulkier items and to allow for easy access to items stored in them.

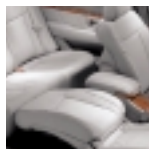


### Cup Holders (Front/Rear)

The Opirus comes with four cup holders, two in the center console for the front seats and two in the rear center armrest for the rear seats.



## SEATING



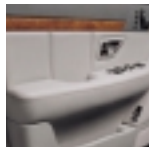
### Full Flat Function

The front passenger seat can recline to a fully flat position, creating a continuous flat stretch to seat back to rear seat bottom.



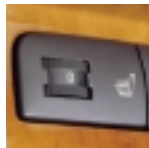
### Electric Lumbar Support Switch

Lumbar support for the driver seat is power adjustable. The switch is located on the side of the seat bottom. Optimizing the degree of lumbar support can help reduce strain and fatigue on longer trips.



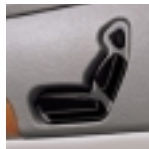
### Door Trim

The doors of the Opirus are handsomely trimmed in wood grain. The doors feature an upholstered armrest and soft-touch buttons for an elegant look and feel.



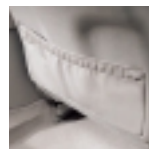
### Seat Warmers

The Opirus offers seat warmers for both the front and rear seats. The seat warmers feature individual controls for each seat and can adjust to five different temperature settings.



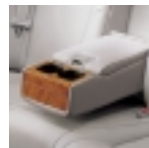
### Power Passenger Seat

The front passenger seat is power adjustable in four directions using a intuitive switch set-up shaped like the seat itself and conveniently located on the passenger side door.



### Seatback Pockets

On the rear of the front seats are convenient seatback pockets, perfect for storing small or flat items such as books or magazines.



### Rear Armrest

The rear center armrest contains a convenient storage space and folds up into the rear seat when not in use. The armrest also houses two cup holders and the controls for the seat warmers.

LUXURY AND CONVENIENCE



**Spacious Trunk**  
The Q50's spacious trunk has a storage capacity of 440 liters, which makes it capable of stowing four sets of golf clubs. The trunk opens to a high angle making access easier. For added safety, there is also a handle inside the trunk allowing it to be opened from the inside.



**ECM**  
The Electro Chromic Mirror automatically dims when headlamps from following vehicles are reflected, helping to reduce strain on your eyes and improving night vision to ensure safer driving.



**Hydraulic Gas Lifters (Hood/Trunk)**  
To make opening the hood and trunk almost effortless, the Q50 comes with hydraulic gas dampers, allowing the hood and the trunk to be opened with just one hand. The lifters also serve as an extra measure of safety by preventing the hood or trunk from closing unexpectedly, alleviating the risk of injury.



**Sunroof**  
The electric tilting and retracting sunroof allows a steady stream of cool and refreshing air into the cabin while flooding the interior with natural illumination.



**Keyless Entry System**  
The Q50 comes with a key fob that controls central locking on all four doors and the trunk adding great convenience especially when carrying items to and from the vehicle.



**Sunvisors**  
The sunvisors, trimmed in cloth, are equipped with vanity mirrors and on the driver's side visor, there is also a handy ticket-holder.



**Tires and Wheels**  
The Q50 is outfitted with stylish 16 inch aluminum alloy wheels wrapped in wide, road-gripping 225/60 radial tires, for a confidence-inspiring level of agility and control.

IN CAR ENTERTAINMENT



**Speaker System**  
The Q50's 6-channel, 270-watt eight speaker layout has been designed to create the acoustical environment of a concert hall, with the tweeters and mid-range speakers arranged to deliver crisp, dynamic sound. Manufactured by Infinity, the Q50 sound system offers premium quality and performance.



**Woofer**  
A deluxe version of the outstanding Infinity sound system adds an eight-inch woofer mounted in the rear parcel tray, delivering stronger bass tones for greater depth and richness of sound.



**Audio System**  
The standard audio system for the Q50 comes equipped with a CD player and cassette in the stereo head unit. A 6-disc in-dash CD changer is also available.



**Cruise Control Buttons**  
Cruise control buttons are located on the steering wheel for ease of operation without having to take your hands off the wheel.



**Steering Wheel Remote Controls**  
In addition to cruise control functions, the steering wheel also features key functions for the audio system making driving easier and safer.



**Glass Antenna**  
The rear window contains a built-in glass antenna, for more refined vehicle aesthetics and giving the vehicle a more streamlined, aerodynamic appeal.



**Rear Air Vent**  
Two vents mounted on the rear of the centre console circulate air to the rear passenger compartment.



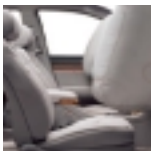
**Dual Zone Automatic Temperature Control**  
The Q50 features a dual zone climate control system that allows temperature and ventilation to be controlled independently between the driver and front passenger.



SAFETY AND SECURITY



**Airbags**  
The Oprius offers up to eight airbags to protect occupants in the event of a serious collision. Dual front airbags for driver and front passenger are standard on both Oprius models. The Oprius also offers four side airbags and two curtain airbags that extend the entire length of the side windows and deploy downward from the roofline to provide increased head and chest protection for occupants.



**Side View Mirrors**  
Heated side view mirrors provide a clear view in wet or cold weather. When reversing the side view mirrors automatically adjust downward to assist in backing up or parallel parking.



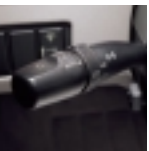
**ESP (Electronic Stability Program)**  
The ESP system helps the driver control the car in the event of a severe skid. The ESP system By monitoring and controlling key functions of the vehicle such as brake force pressure and engine power, ESP helps to control understeer and oversteer to give you assured control at all times.



**Disc Brakes**  
The Oprius' braking system is responsive and highly effective. 16 inch ventilated discs on the front wheels and 15 inch solid discs on the rear wheels prevent heat build-up and deliver sure and stable braking performance. Braking power is supplied by a 8 and 9 inch tandem brake booster.



**Child Anchor Holder**  
Standard on vehicles sold in Europe, child anchors make installing a child safety seat more secure.



**Automatic Light Control System**  
The Oprius is equipped with an automatic light control system that automatically turns head and tail lamps on or off by sensing changes in outside light. This system provides the convenience of adjusting the lights to variable or changing light conditions.



**Headlamp Washers**  
The headlamp washers telescope outward to spray the headlamps clean, ensuring optimum brightness at all times.



**Rear Warning System**  
This system assists when backing the vehicle in a confined area. If the vehicle approaches an object when backing up, a warning will sound to alert the driver before hitting the object.

Body Colors

Pearl White (U3)

Ebony Black (EB)

Diamond Silver (C5)

Cobalt Blue (4C)

Carbon Gray (N7)

Dark Rose Red (R8)

Cream Gold (D8)

Pearl White, Gold Silver (U6)

Ebony Black, Warm Gray (NE)

Dark Rose Red, Warm Gray (DL)

Cream Gold, Light Beige (DY)

Interior Colors

Gray (N7)

Black (L4)

**SPECIFICATIONS** // Engine : Sigma 3.5 litre DOHC V6. Power-cast metal connecting rods, fuel-efficient variable intake system. Peak output of 203 ps at 5,500rpm, maximum torque of 30.4 kg-m at 3,500rpm.

**DRIVETRAIN** // Transmission : 5 speed sports mode automatic gearbox with sequential manual mode for choice between fully automatic and manual shifting. Independent clutch control system where each clutch is controlled directly by individual hydraulic control valves for smoother shifting.

**Traction Control System** : TCS uses speed sensors on each wheel to detect the slippage in drive wheels during acceleration. When detected, engine output and braking of the slipping wheel is adjusted for optimal drive force. Improving stability when accelerating on slippery surfaces or while turning.

**Electronic Stability Program** : ESP monitors key vehicle functions with sensors measuring wheel spin, acceleration, lateral rotation, steering and throttle input to compare driver and vehicle behaviour. When a potential skid is detected, ESP will adjust engine power and braking force to improve vehicle control.

**STEERING** // Electronic Power Steering : EPS varies power steering assistance to make steering easier at low speeds and firmer at high speeds to improve driver control.

**SUSPENSION** // Front : Independent double wishbone type with gas shock absorbers, coil springs and anti-roll stabilizer bar.  
Rear : Independent multi-link type with gas shock absorbers, coil springs and anti-roll stabilizer bar.

**Electronic Control Suspension** : ECS uses sensors to monitor vehicle speed and ride quality to reduce body roll in turns, front dive during braking, rear squatting during acceleration and progressively stiffens suspension at higher speeds through solenoid actuators in each shock absorber.

**BRAKES** // 4 wheel disc with 8 and 9 inch tandem boosters.

**Brake Assist System** : BAS enables faster braking response by boosting brake pressure during emergency stops. BAS enables novice drivers and drivers with less strength to apply maximum brake pressure faster.

**Anti-lock Braking System** : ABS is 4-channel and 4-sensor to determine impending wheel lock up and modulates brake line pressure to prevent wheel lock up and improve steering control.

**Electronic Brake force Distribution** : EBD adjusts brake bias between front and rear wheels when vehicle mass shifts forward under braking to maximize brake force potential without compromising control. EBD works in conjunction with ABS.

**WHEELS AND TIRES**  
16 inch aluminum alloy wheels. 225/60 radial tires.

**PERFORMANCE** // Acceleration : The engine will push the Oprius from 0-100 kph in 8.2 seconds and from 60-100 kph in 5.1 seconds, according to li-house measurements. Top speed of 220 kph.

DIMENSIONS

Overall Length	4,979 mm
Overall Width	1,850 mm
Overall Height	1,486 mm
Wheelbase	2,800 mm
Front Wheelhead	1,570 mm
Rear Wheelhead	1,580 mm
Overhang Front	1,092 mm
Overhang Rear	1,177 mm
Interior Length	1,930 mm
Interior Width	1,510 mm
Interior Height	1,290 mm
Rear Head Room	1,015 mm
Rear Head Room	975 mm
Rear Leg Room	1,110 mm
Rear Leg Room	940 mm
Rear Shoulder Room	1,475 mm
Rear Shoulder Room	1,460 mm
Rear Hip Room	1,402 mm
Rear Hip Room	1,386 mm
Minimum Turning Circle Radius	5.7 m
Trunk Capacity	440 Burs

Dimensions



NOTICE : All information and illustrations are based on data available at the time of publication and subject to change without notice.

