



The Kia
picanto



The Power to Surprise



Details within this brochure are not intended to be a description of the vehicle but are simply a general overview. For a more detailed description please speak to your Kia dealer. If a particular item is important to you, please make sure it is mentioned, in writing, when ordering your car. This disclaimer does not affect your statutory rights. Images shown are for illustrative purposes only and not to UK specification. Features shown are not necessarily standard across the range. Several models of Bluetooth® enabled phones are available on the market. Kia cannot guarantee compatibility with all phones.



A compact car. Full of big ideas.

Zippering through the city just became even more exciting in the compact Picanto '1 Air'. Building on the popularity of its predecessor, the Picanto features a refreshed and stylish 'Tiger-Nose' grille and new front bumper design which incorporates a newly designed lower radiator grille and front fog light housing. On the interior the '1 Air' won't disappoint either as it boasts the convenience of air conditioning to keep you cool however long the journey and Bluetooth® with voice recognition and music streaming.



Details within this brochure are not intended to be a description of the vehicle but are simply a general overview. For a more detailed description please speak to your Kia dealer. If a particular item is important to you, please make sure it is mentioned, in writing, when ordering your car. This disclaimer does not affect your statutory rights. Images shown are for illustrative purposes only and not to UK specification. Features shown are not necessarily standard across the range.



Full of colour.

The Picanto 'SE' model is available in a choice of four stunning colours including the Honey (metallic) exterior colour pictured here. The 'SE' model boasts stylish exterior features including 14" alloy wheels, the convenience of electrically adjustable and heated door mirrors, chrome exterior door handles and privacy glass which further enhances the on-road presence of this compact model. The 'SE' also boasts the convenience of rear parking sensors* which make it easier to park in tight spaces. The Picanto - the compact car grown up!

* Parking sensors may not match exterior body colour.

Eye-catching style.

The range-topping Picanto 'Sport' lives up to its name by boasting stylish sports front and rear bumpers with twin exhaust and 15" alloy wheels which enhance its road presence. The 'Sport' boasts superb interior features too including the convenience of a 7" Touchscreen sat nav with European mapping, a reversing camera system (integrated into the sat nav screen), stylish red/grey cloth with black faux leather upholstery, a glossy black centre fascia and aluminium sports pedals.





Details within this brochure are not intended to be a description of the vehicle but are simply a general overview. For a more detailed description please speak to your Kia dealer. If a particular item is important to you, please make sure it is mentioned, in writing, when ordering your car. This disclaimer does not affect your statutory rights. Images shown are for illustrative purposes only and not to UK specification. Features shown are not necessarily standard across the range.



The epitome of comfort.

The Picanto offers generous interior space and 5 seats while keeping its compact, small car looks and size. Ergonomically designed seats offer the ultimate support while the Picanto boasts plenty of head and legroom. To further enhance the luxurious feel on board, the range-topping 'Sport' comes with a stylish red/grey cloth with black faux leather upholstery and the convenience of cruise control and a speed limiter – ideal for motorway driving, which allows the driver to maintain a constant speed during long journeys.

For passenger comfort, air conditioning is a standard feature on the '1 Air' whilst automatic air conditioning is amongst the standard features on the 'SE' and 'Sport'. Notice the new glossy black centre fascia, steering wheel bezel and gearshift top trim which adds to the sportiness of this range topping model and enhance the luxurious feel on-board.

Details within this brochure are not intended to be a description of the vehicle but are simply a general overview. For a more detailed description please speak to your Kia dealer. If a particular item is important to you, please make sure it is mentioned, in writing, when ordering your car. This disclaimer does not affect your statutory rights. Images shown are for illustrative purposes only and not to UK specification. Features shown are not necessarily standard across the range.



Technology on the move



1. Motor driven power steering with tilt steering wheel adjustment – MDPS provides better responsiveness at different speeds and its tilt function lets you find the optimum steering position with ease. **2. Leather trimmed steering wheel with leather trimmed gearshift** – the luxury of this feature adds to the Picanto's on board presence. **3. Rear parking sensors ('SE' and 'Sport')** – making parking easier especially in tight spaces. **4. 7" Touchscreen sat nav with European mapping ('Sport')** – this convenient feature helps you find your destination easily. **5. USB and AUX ports for connection of an audio media device (ipod/Memory stick)** – staying connected is vital. So plug in your mobile music storage device and enjoy your music on the go.



RDS radio/CD audio with MP3 disc compatibility – the enhanced audio system has fewer buttons and a faster response when switching between functions.



Steering wheel mounted controls

Turn it up, turn it down, switch channels, skip tracks. And do it all while keeping your hands on the wheel with this smart remote control.



Bluetooth® with voice recognition and music streaming ('1 Air' and 'SE')

Conveniently positioned controls, with illuminated call, end call and volume buttons, as well as voice-recognition technology, enables you to use a Bluetooth® mobile without taking your hands from the wheel.

Several models of Bluetooth® enabled phones are available on the market. Kia cannot guarantee compatibility with all phones. Please check the compatibility of your mobile phone via www.kia.co.uk or by trialling your phone at a Kia dealer.



Premium Supervision cluster ('Sport')

With three cylindrical housings for the dials, the clear, sporty-looking supervision cluster consists of a speedometer, rev counter, fuel gauge, water temperature gauge and outside temperature gauge.



Dot LCD type (supervision cluster)



Segment LCD type (conventional cluster)



Details within this brochure are not intended to be a description of the vehicle but are simply a general overview. For a more detailed description please speak to your Kia dealer. If a particular item is important to you, please make sure it is mentioned, in writing, when ordering your car. This disclaimer does not affect your statutory rights. Images shown are for illustrative purposes only and not to UK specification. Features shown are not necessarily standard across the range.



Details within this brochure are not intended to be a description of the vehicle but are simply a general overview. For a more detailed description please speak to your Kia dealer. If a particular item is important to you, please make sure it is mentioned, in writing, when ordering your car. This disclaimer does not affect your statutory rights. Images shown are for illustrative purposes only and not to UK specification. Features shown are not necessarily standard across the range.



Flexibility.

The Picanto interior offers inviting style and comfort with a stylish premium black cloth upholstery on the 'SE' model. The rear seats are 60:40 split-folding so there's plenty of space for passengers and plenty of storage space (a substantial 200 litres). The Picanto's cabin is well thought through with helpful touches including sliding and reclining front seats and a driver's seat height adjuster.



Details within this brochure are not intended to be a description of the vehicle but are simply a general overview. For a more detailed description please speak to your Kia dealer. If a particular item is important to you, please make sure it is mentioned, in writing, when ordering your car. This disclaimer does not affect your statutory rights. Images shown are for illustrative purposes only and not to UK specification. Features shown are not necessarily standard across the range.

A genius of practicality.

The Picanto has places for all the little things you need. And when you need to fit in more, its amazing versatility comes to the rescue.



Full-folding second row seats

The rear seats fold forward easily to create a generous cargo area for transporting even oversized items.



60:40 split-folding rear seats

To accommodate more combinations of passengers and cargo, the rear seats split 60:40 and fold flat for maximum luggage capacity.



Storage spaces

Storage spaces abound in the Picanto.



1



2



3



4

1. Glove box - a roomy glove box (9.6 litres) is perfect for storing items. **2. Door map pocket with bottle holder** - Not just for maps, but for other things like drinks and snacks. **3. Rotating dual cup holder** - a click of a button in the floor console reveals rotating dual cup holders. **4. Front seatback pocket ('SE' and 'Sport')** - The pockets on the back of the front seats can hold magazines and books within reach of passengers in the back.

Superior power and performance.

The Picanto range is available in a choice of two sophisticated petrol engines either a 1.0 litre 5-speed manual or a 1.25 litre engine which is available in either a 5-speed manual or a 4-speed automatic transmission. The Picanto range boasts 'Kappa' engines which offer (up to 64.2 mpg on the combined cycle). These engines also feature a power boost (up to 84bhp) combined with advanced aerodynamic styling and sharpened handling so the Picanto offers a truly fun driving experience.



Kappa 1.25 litre

Max. power
84bhp @ 6,000
Max. torque
120Nm @ 4,000



Kappa 1.0 litre

Max. power
65bhp @ 5,500
Max. torque
95Nm @ 3,500



1.0 and 1.25 litre 5-speed manual & 1.25 litre 4-speed automatic transmission

Both the five-speed manual and four-speed automatic transmissions offer smooth gear changes.





Details within this brochure are not intended to be a description of the vehicle but are simply a general overview. For a more detailed description please speak to your Kia dealer. If a particular item is important to you, please make sure it is mentioned, in writing, when ordering your car. This disclaimer does not affect your statutory rights. Images shown are for illustrative purposes only and not to UK specification. Features shown are not necessarily standard across the range.

Uncompromised safety credentials.

At the crash test laboratories of Kia Motors' Namyang Research and Development Centre, we undertake rigorous testing for a wide range of motor accident scenarios. From the early phase of development, we create computer simulations to predict a vehicle's safety and up to 100 crash tests of the actual vehicle are performed prior to launch. Your safety is our top priority. The Picanto range has been no exception to this robust testing process.



Hill-start Assist Control (HAC) - by maintaining brakeforce until you accelerate, HAC prevents the vehicle from rolling backwards when starting on a steep incline.



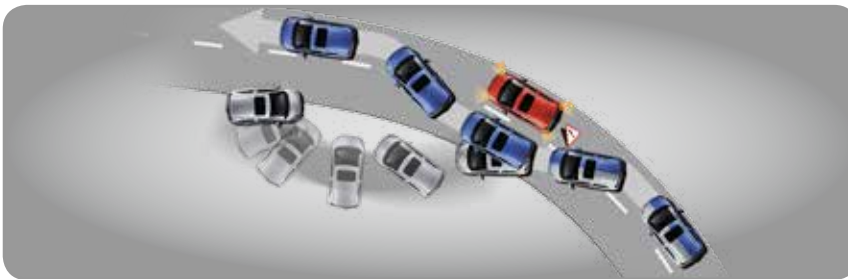
Brake Assist System (BAS) - reduces the stopping distance during sudden braking situations by applying maximum brake force when needed.



Emergency Stop Signalling (ESS) - detects emergency brake application and immediately activates the brake lights, flashing them to warn other drivers.

Vehicle Stability Management (VSM)

Working in conjunction with the Motor Driven Power Steering, VSM helps ensure that the Picanto remains stable when simultaneously braking and cornering.



Electronic Stability Control (ESC)

ESC reduces skidding to help maintain control in the event you need to brake or swerve suddenly.



Six airbags

Front airbags for the driver and front passenger, two airbags at the sides and two curtain airbags run the length of the cabin.

Details within this brochure are not intended to be a description of the vehicle but are simply a general overview. For a more detailed description please speak to your Kia dealer. If a particular item is important to you, please make sure it is mentioned, in writing, when ordering your car. This disclaimer does not affect your statutory rights. Images shown are for illustrative purposes only and not to UK specification. Features shown are not necessarily standard across the range.

The Picanto range

WHEELS

ENGINE, TRANSMISSION & CO₂ EMISSIONS

picanto '1 Air'



14" Steel Wheels

'1 Air' 1.0 Petrol 65bhp 5-speed manual (105 g/km)

picanto 'SE'



14" Alloy Wheels

'SE' 1.0 Petrol 65bhp 5-speed manual ISG (102 g/km)



'SE' 1.25 Petrol 84bhp 4-speed automatic (130 g/km)

picanto 'Sport'



15" Alloy Wheels

'Sport' 1.25 Petrol 84bhp 4-speed automatic (130 g/km)

'Sport' 1.25 Petrol 84bhp 5-speed manual ISG (106 g/km)

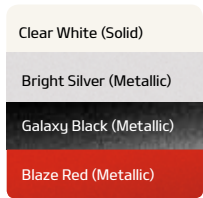


STANDARD SPECIFICATION

PAINT COLOURS

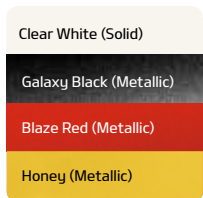
PICANTO '1 AIR'

- 14" Steel Wheels (165 / 60 R14)
- Body Coloured Exterior Door Handles
- Body Coloured Mirrors
- Air Conditioning
- Front Electric Windows
- Remote Central Door Locking & Fold-away Key
- USB & AUX Ports
- 2-speaker System
- Bluetooth® with Voice Recognition & Music Streaming*
- 60:40 Split Folding 2nd Row Seats
- Trip Computer
- ABS with Electronic Brakeforce Distribution (EBD) & Brake-Assist System (BAS)
- Electronic Stability Control (ESC) & Vehicle Stability Management (VSM)
- Hill-start Assist Control (HAC)
- Twin Front, Side & Curtain Airbags
- All-round Height Adjustable Headrests
- Anti-Theft Alarm System
- Five Seats
- Leather Trimmed Steering Wheel
- Leather Trimmed Gearshift
- Front Seatbelt Height Adjusters
- Steering Wheel Mounted Controls



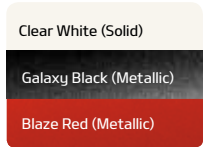
PICANTO 'SE' (ADDS OVER '1 AIR')

- 14" Alloy Wheels (165 / 60 R14)
- Chrome Exterior Door Handles
- Electrically Adjustable & Heated Door Mirrors
- Automatic Air Conditioning
- Front & Rear Electric Windows (Driver's Auto Up/Down)
- Rear Parking Sensors**
- 4-speaker Audio System
- Privacy Glass (Rear Windows & Tailgate)
- Autolight Control, Escort & Welcome Lamp
- Metallic Paint Centre Fascia & Steering Wheel Bezel
- Silver Paint Finished Interior Door Handles & Handbrake Button
- Speed Sensing Auto Door Locking
- Premium Black Cloth Upholstery
- Front Seatback Pocket (Passenger and Driver's Side)
- Black Radiator Grille with Chrome Surround



PICANTO 'SPORT' (ADDS OVER 'SE')

- 15" Alloy Wheels (175 / 50 R15)
- Sports Front & Rear Bumper with Twin Exhaust
- Body Coloured Side Sill Mouldings
- Aluminium Sports Pedals
- Red/grey cloth with black faux leather Upholstery
- Red Coloured Door Trim
- Electrically Folding, Adjustable and Heated Door Mirrors with LED Indicator Lights
- Cruise Control & Speed Limiter
- 6-speaker System
- 7" Touchscreen Satellite Navigation with European Mapping
- Reversing Camera System (integrated into Sat Nav Screen)
- Glossy Black Centre Fascia, Steering Wheel Bezel & Gearshift Top Trim
- Front Passenger Seat Undertray



* Several models of Bluetooth® enabled phones are available on the market. Kia cannot guarantee compatibility with all phones. Please check the compatibility of your mobile phone via www.kia.co.uk or by trialling your phone at a Kia dealer.
** Parking sensors may not match exterior body colour.



Details within this brochure are not intended to be a description of the vehicle but are simply a general overview. For a more detailed description please speak to your Kia dealer. If a particular item is important to you, please make sure it is mentioned, in writing, when ordering your car. This disclaimer does not affect your statutory rights. Images shown are for illustrative purposes only and not to UK specification. Features shown are not necessarily standard across the range.

VEHICLES IN HARMONY WITH NATURE

Several Picanto models boast Kia's advanced EcoDynamics fuel-stretching technology known as Intelligent Stop and Go (ISG) which can help save up to 12% more fuel – simply by cutting the vehicle's engine off when stationary. When you come to a stop, select neutral and remove your foot from the clutch and the engine will switch off automatically. When you are ready to move off again, simply press the clutch and the engine will re-start instantly. All elements work together to create what we call 'EcoDynamics.' Clever stuff!

We are also building a clean global production system, raising the resource recovery rate, and designing vehicles with the disposal phase in mind. Meanwhile, we are adopting more and more environmentally friendly materials in our cars, selected for their composition, biodegradability and bio-inspired technology. For example, to reduce our carbon footprint, we are replacing oil-based materials with plant-based materials wherever possible.

As you can see, we at Kia Motors are committed to finding fundamental solutions to cut energy consumption and combat climate change.



Attention to detail.



Bluetooth® with voice recognition and music streaming ('1 Air' and 'SE')
Conveniently positioned controls, with illuminated call, end call and volume buttons, as well as voice-recognition technology, enables you to use a Bluetooth® mobile without taking your hands from the wheel.



Automatic headlight control ('SE' and 'Sport')

Auto light control automatically turns on the headlights using the built-in sensors.



Sunvisors with vanity mirrors and ticket holder on driver's side – (standard)

LED's beside the vanity mirror on the driver's side sun visor light up which brings a touch of elegance to the cabin and helps you to see every detail in the mirror.



Cruise control and speed limiter system ('Sport')

The Picanto 'Sport' comes with this feature which is ideal for motorway driving as it allows the driver to maintain a constant speed during long journeys and enhances fuel economy.



Electrically folding, adjustable and heated door mirrors with LED indicator lights ('Sport')

The electrically folding door mirrors make it easier to get into and out of the car.



Tyre Pressure Monitoring System (TPMS)

This feature is standard across all models. If one or more of the tyres become significantly under-inflated the low tyre pressure warning icon illuminates on the driver's instrument display warning the driver.



Rear parking sensors ('SE' and 'Sport')

These sensors help minimise the collision risks involved when parking or manoeuvring.



7" touchscreen sat nav with European Mapping ('Sport')

This feature helps you find your destination easily.



ENVIRONMENTALLY YOURS

Kia Motors takes great pride in rising to meet the expectations and challenges of the 21st century while making tangible contributions to the preservation of the environment and sustainable development of society. Kia Motors has set up an environmental research centre to spearhead the company's drive in the production of less polluting hybrid and fuel-cell vehicles, investing in eco-friendly cars for a greener tomorrow.



Kia Motors Corporation is committed to surpassing customer expectations through continuous automotive innovation. By offering our customers products and services that exceed expectations, we enable them to lead energetic lives. Kia's line-up of dynamically designed, high quality cars and world-class service offerings ensure that our customers are enthusiastic about coming back to Kia - again and again.

The concept of eco-friendly cars is followed through all cycles of a vehicle's life. From design through to recycling, Kia Motors creates innovative products, ensuring state-of-the-art Design for Recycling (DfR) guidelines. Wherever possible, recycled and recyclable materials are used in the production of Kia cars, all major plastic parts being chosen for ease of disassembly and stamped with a composition code.

Even at the end of a vehicle's life, one of Kia Motors' environmental targets is the eco-friendly take-back and treatment of End-of-Life Vehicles. Operating a rigid process, Kia Motors has selected partners across Europe that guarantee environmental protection in the treatment of harmful waste substances. These are then recycled or recovered, ensuring the highest level of environmental protection. Kia Motors (UK) Ltd has appointed autogreen as our partner to manage the take-back, treatment and recycling of End-of-Life Vehicles in accordance with Directive 2000/53/EC. They can provide advice on whether or not your vehicle qualifies for free take-back and the location of your nearest take-back facility.

DYNAMIC EVOLUTION

Driven by innovation: A solar-powered car, a water-fuelled car, a self-navigating "smart" car. No longer are these figments of the imagination but one day could be parked in your garage. Kia researchers are working around the clock to create the ultimate driving solutions with the safest, easy-to-drive and environmentally friendly features.

Kia's Namyang R&D Centre in Korea and our overseas research and design facilities in the USA, Japan and Germany are combining efforts to develop new vehicles that satisfy the diversified needs of each region of the world. By ushering in a new generation of cars that feature high impact-durability frames, on board "datainfotainment" systems and fuel efficient, lightweight and high-powered engines with reduced emissions and noise, Kia will spearhead automobile innovation in the 21st century.

COMPLETE PEACE-OF-MIND

At Kia, our quality promise extends beyond the factory floor. We want to ensure you always get the best service possible. Our pioneering 7 year warranty reflects this commitment. This warranty is also transferable so that if in the future you decide to sell your Kia Picanto, the new owner will benefit from the remainder of the warranty provided the car is regularly maintained in accordance with the servicing schedule*.

7 year vehicle warranty

Every Kia Picanto benefits from our pioneering 7 year/100,000 mile vehicle warranty*.

5 year paint warranty

High quality body paint ensures long-lasting protection and shine for your new Kia Picanto which is covered by our 5 year/100,000 mile paint warranty*.

12 year anti perforation warranty

Your new Kia Picanto comes with superior corrosion protection and a 12 year/unlimited mileage warranty against rust from the inside out**.



Care-3

Great value fixed-price servicing for your new Picanto from £299 (including VAT)

For complete peace-of-mind, Kia can offer you a great value fixed-price servicing package for your new Picanto. The cost of Care-3 (3 services) is just £299. Ask your Kia dealer for more details or log onto www.kia.co.uk/care3. Terms and conditions apply. Care-3 pricing correct at time of print (October 2016).

Financing

Your local Kia dealer is your partner in establishing a financing plan that's best suited to your needs. Ask your Kia dealer for more details.

*For full warranty coverage including terms and exclusions please contact your Kia dealer.

**Annual bodywork inspection required for which a charge may apply.

The official fuel consumption figures in mpg (l/100 km) for the Kia Picanto range are between Urban: 38.7 (7.3) – 51.4 (5.5), Extra-Urban: 61.4 (4.6) – 74.3 (3.8), Combined: 50.4 (5.6) – 64.2 (4.4). The official CO₂ emissions for the Kia Picanto range are between 130 – 102 g/km.

CO₂ emissions based on data available at time of going to print (October 2016).



The Kia warranty covers your new Picanto for 7 years.



Log onto www.kia.co.uk for all the latest information.



www.kia.co.uk

Kia Motors (UK) Ltd
Walton Green
Walton-On-Thames
Surrey
KT12 1FJ
Freephone: 0333 2022990
www.kia.co.uk

PICB10.16

All information and illustrations are based on data available at the time of print (October 2016) and are subject to change without notice. The fuel figures quoted were obtained in accordance with the prescribed measuring process (Directive 80/1268/EEC within the currently applicable version). These figures are based on an individual vehicle and do not constitute part of the product offer; they are provided solely for the purposes of comparison between different vehicle models. Contact your local Kia dealer for current information and full warranty details including terms and conditions. Imagery shown throughout this brochure is for illustrative purposes only and not to UK specification. Features shown are not necessarily standard across the new Picanto range.



Major Sponsor



The Power to Surprise

16.000775