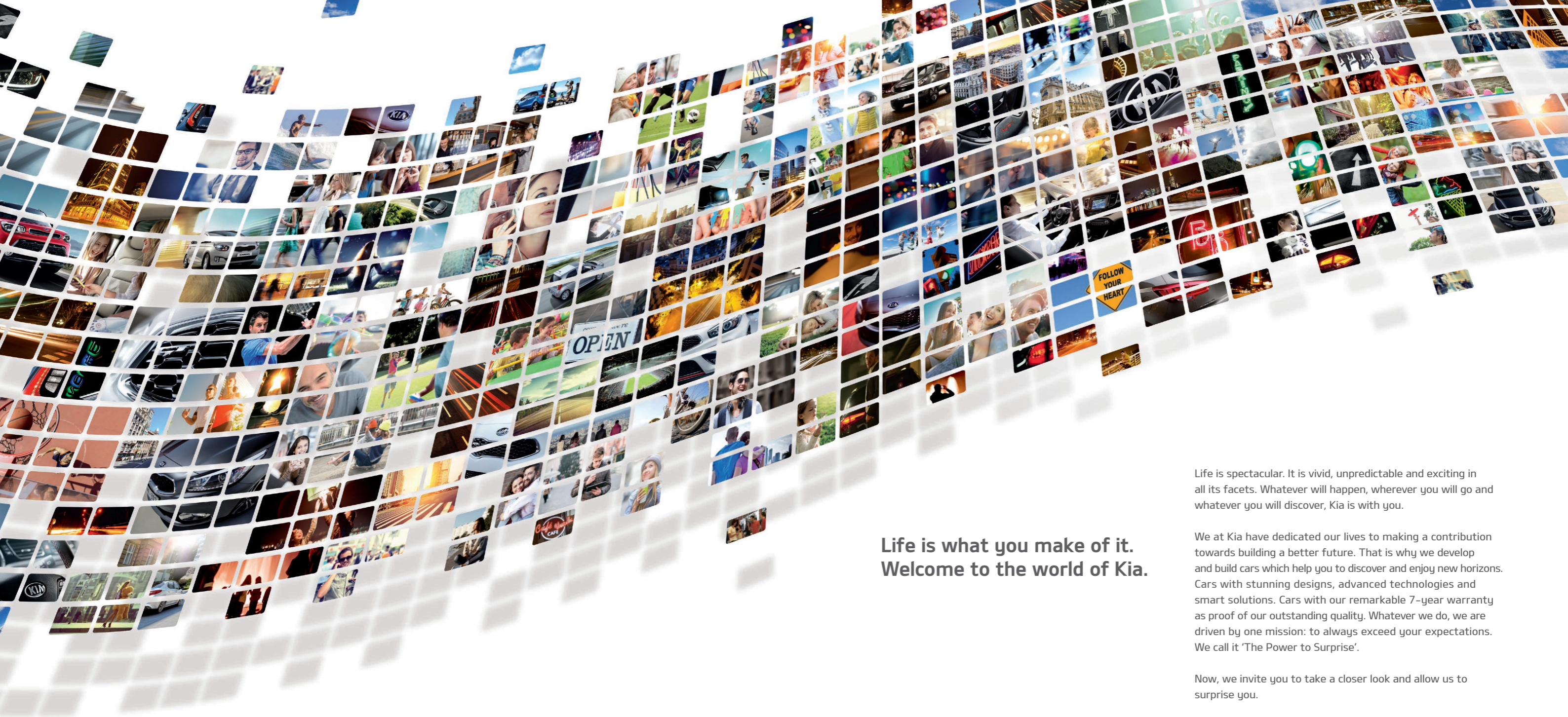


ceed  
5 door & Sportswagon



The Power to Surprise



**Life is what you make of it.  
Welcome to the world of Kia.**

Life is spectacular. It is vivid, unpredictable and exciting in all its facets. Whatever will happen, wherever you will go and whatever you will discover, Kia is with you.

We at Kia have dedicated our lives to making a contribution towards building a better future. That is why we develop and build cars which help you to discover and enjoy new horizons. Cars with stunning designs, advanced technologies and smart solutions. Cars with our remarkable 7-year warranty as proof of our outstanding quality. Whatever we do, we are driven by one mission: to always exceed your expectations. We call it 'The Power to Surprise'.

Now, we invite you to take a closer look and allow us to surprise you.



cee'd 5 door



cee'd Sportswagon

please localise QR!



**The new Kia cee'd 5 door & Sportswagon:**  
Two distinctive cars, one striking cee'd family



**Instant attraction. Lasting desire.**  
**The new Kia cee'd >>>**

Yes, it's true, the new Kia cee'd has only one thing on its mind. To get you hooked on those dynamic lines. But there's more. Beyond the well-proportioned exterior, you'll find the cee'd is packed with the latest technology, more efficient engines and the highest level of comfort ever. It's the reason why, once you get behind the wheel, you can't get enough. Like an everlasting crush, it keeps on rewarding you with the best Kia has to offer. Still want more? Choose the stylish Sportswagon for extra space and practical ideas to keep you excited.

5 door design

## ➤ Shaped to make you go 'wow'

### Show your stylish side with the new Kia cee'd

Take a wedge-shaped profile, strong shoulder line and muscular bonnet. Combine it with a low stance, short overhangs and long wheelbase, and you have the sort of styling typically found on a sporty coupé. Only here, it's met with 5 door spaciousness and functionality. The result is a truly desirable head-turner, conceived by Kia's award-winning European design team led by Grégory Guillaume.

### European flair:

Designed in Germany, manufactured at our state-of-the-art factory in Slovakia





**Forward thinking:**

We believe design and quality should always work hand in hand. The result is a striking cee'd Sportswagon that feels as good as it looks.



**Sportswagon design**

**> Ready for some special effects?**

**Make room for desire**

The new Kia cee'd Sportswagon makes the combination of spaciousness, versatility and stylish design seem effortless. Just take a look at the sleek roofline with the stylish roof rails, the trademark Kia grille or the beautifully sculpted front and the refined rear LED lights. The tailgate extends into the roof to allow for a bigger opening and easy loading. It's all about bold design that's both enjoyable and functional. In fact, hundreds of hours of wind tunnel testing prove that the aerodynamic shape of both cee'd body styles is as efficient as ever.

Quality you  
can depend on.  
It's what Kia  
is renowned for

Quality

➤ **Attraction to go on  
and on about**

**Life is full of twists and turns,  
so it's best to choose a car you can count on.**

For complete peace of mind, we are proud to offer the cee'd with our industry-leading 7-year warranty. We can guarantee this great coverage because the cee'd is built to the highest standards at our state-of-the-art factory in Slovakia and has been tested rigorously for reliability and durability. So chances are, you will never need to make use of this exceptional bumper-to-bumper guarantee. The warranty is even fully transferable to any subsequent owner while still valid, letting you maximise your car's resale value if you come to sell it. That's what we call enduring attraction.

**The Kia 7-year warranty:**

7-year/150,000 km new car warranty. Valid in all EU member states (plus Norway, Switzerland, Iceland and Gibraltar), subject to local terms and conditions





#### Driver ergonomics

### > Let the show begin

#### Everything for a spectacular drive

The new cee'd cabin is designed to dazzle you – not only with all the chrome highlights around the stylish cabin. Both hatchback and Sportswagon instantly make you feel welcome. They greet you with a generous blend of comfort, high-tech and style. For a warm glow, there's the ambient light on the striking centre console and on the USB and AUX outlets. Soft-touch surfaces on the dashboard, eye-catching details like the fintail door handle and the sporty three-dial instruments also create a high-quality atmosphere.

With everything designed around the driver, operating your 'tools and gadgets' feels effortless: the intuitively shaped instrument cluster can be paired with a high-definition TFT LCD speedometer. It's very easy to read and adds to the premium feel. The centre armrest is adjustable while the asymmetric centre console turns towards the driver. All this attention to detail goes a long way to get you started in comfort and in style.

#### Engine start/stop button and smart key:

Forget searching for keys. Just carry the smart key in your pocket or bag. It's recognised by the car as you approach it. To unlock the door, simply push the button on the door handle. To start the car, press the engine start/stop button.



#### Ambient light:

Gets you in the mood for driving



## Driver technology

### ➤ Being in control has never felt this relaxed

To help you enjoy every mile, both 5 door and Sportswagon offer plenty of high-tech assistance:

The instrument cluster with colour TFT LCD screen: it's your command centre for many intelligent features, ranging from trip computer to turn-by-turn instructions, as part of the navigation system. It also displays the Smart Parking Assist System which parks the car for you. It works with 12 sensors around the car to help find the right parking space – both parallel and 90° parking bays. The system does all the manoeuvring for you; all you need to do is adjust the speed and change gears as instructed. It can even steer the car out of a parallel parking space.



#### 1. The electronic parking brake:

For more comfort, press the button instead of pulling a lever

#### 2. Smart Parking Assist System:

Parking, the easy way: the system finds the right space and steers the car into it

#### 3. Trip computer:

Essential data: the computer displays distance to empty, time travelled, fuel usage and a speed indicator. It also monitors the tyre pressure, displays the Lane Departure Warning System and, as shown here, the rear parking sensors

#### 4. Trip computer/steering mode:

Comfort, Normal or Sport: when you choose Flex Steer, the cluster shows you which steering mode you're in

#### 5. Trip computer/shift indicator:

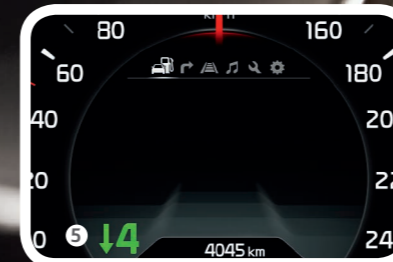
The trip computer advises which gear to choose to help save fuel and reduce emissions

#### 6. Trip computer/turn-by-turn instructions:

The information cluster even shows you navigation instructions

#### 7. Trip computer/Speed Limit Information Function:

Powered by a camera located on the windscreen, it recognises speed limit signs and displays the information in the cluster as seen here, and on the navigation screen





## Connectivity

### ➤ Entertainer, navigator, operator ... no wonder you're inseparable

#### Enter a new world of cee'd multitasking

The new Kia cee'd offers a wide range of smart technology you wouldn't normally expect in a car of this class. Take the standard audio sound system with new Digital Audio Broadcasting (DAB) radio, CD and MP3 player and 6 speakers. Or opt for the audio system with a 4.3" TFT LCD display and rear-view camera. If you want effortless navigation paired with DAB, choose our brand-new 7" touch-screen full-map navigation system with free 7 year map update. It also includes a text-to-speech function which indicates street names as you drive and displays rear-view camera images to help you park manually. All audio systems feature AUX/USB outlets for your iPod or other MP3 players.

**Rear-view camera:**  
The optional 4.3" TFT LCD display audio system can relay images from the rear-view camera to help you park the cee'd

If you like multitasking, the steering wheel controls allow you to do just that: while keeping your eyes on the road, you can adjust the radio volume, make calls via Bluetooth or set the cruise control.

#### 1. Satellite navigation system:

The new 7" touch-screen full-map navigation system with 7 year map update for the latest data

#### 2. Audio remote control:

Stay focused on the road: adjust the volume without taking your hands off the wheel

#### 3. AUX/iPod/USB:

Simply plug in your favourite device to listen to music

#### 4. Bluetooth connectivity:

Making and receiving calls hands-free – it couldn't be simpler



Includes six free annual map updates for new Kia vehicles factory-fitted with an LG navigation device

TomTom navigation system

> **Where? When? How?**  
**The answer is here**

Our new navigation system featuring TomTom services takes reliable route guidance to the next level of accuracy and excellence. It keeps you in touch with the outside world and offers more handy information than ever. At the heart is a WiFi unit that enables the cee'd navigation system to connect to the Internet through your smartphone.\*

**1. Live traffic\*\*:**

The navigation system delivers highly accurate live traffic information that is updated every two minutes, so you know exactly where traffic is running smoothly, or which areas to avoid. When things get busy, the system lets you know and suggests alternative routes.

**2. Speed cameras\*\*:**

You'll also be alerted to a whole range of speed cameras, including fixed and stationary ones, as well as restricted access zones. The system can even take into account areas where accidents are particularly common, and warn you about these accident black spots.

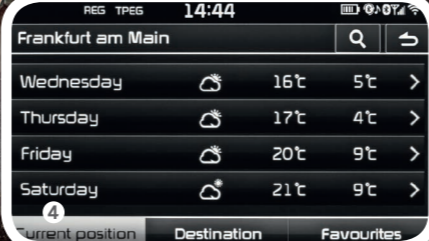
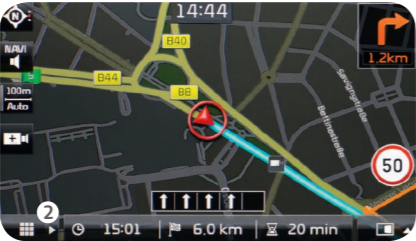
**3. Local search:**

If you're looking for a sushi restaurant a supermarket, or a particular place to meet, simply select Local Search. The database contains 500 searchable categories, 25,000 keywords and 250,000 locations to ensure you find what you need. Plus, the system allows you to search in ten languages, even while abroad.

**4. Weather forecast:**

Is your weekend away going to be sunny or a washout? Better check the weather forecast. Just type in your destination to view a four-day summary, complete with minimum and maximum temperatures, wind speed and chances of sun or rain.

\*Smartphone with data plan required to activate services.  
\*\*Legal restrictions to these services may apply depending on country usage.



Comfort & quality

## > Dressed to impress and to focus

### A front cabin to exceed your expectations

Ergonomics is the art of creating a feel-good factor inside a car. You'll find plenty of that in both the cee'd 5 door and the Sportswagon thanks to high-quality materials and advanced comfort: the power-assisted driver seat remembers up to two settings, and the steering wheel comes with tilt and telescopic adjustment. Both the steering wheel and front passenger seats can be heated – perfect for cold winter mornings. You can choose between three levels to suit your preferred temperature. There's also a choice of manual or automatic dual-zone air conditioning. Thanks to the latest in air control technology, both systems ensure excellent fuel economy.

### Air conditioning:

Because we are all different: adjust the climate manually, or choose dual-zone air conditioning to adjust the climate individually for the driver and passenger sides





Comfort & quality

## > Brighten up your day

### **First-class treatment wherever you're seated**

Both cee'd models ensure everyone is sitting comfortably, with ample headroom and legroom for all passengers. The 380-litre luggage compartment in the hatchback is one of the most generous in its class. And if you need more space to carry larger or longer items, the rear seats can be split 60/40. You can also simply fold down the rear seats for a flat loading area and 1,318 litres of luggage space.

### **Sun & light:**

The optional panoramic sunroof (seen here on the Sportswagon) brightens up the cabin and makes it feel even more spacious. The smoothly operating two-piece roof can be fully opened and closed at the touch of a button, stopped in any position you choose or tilted

Sportswagon practicality & versatility

## ➤ Desire, extended

### The spaciously stylish Sportswagon

Want more reasons to fall in love with the cee'd? Here are some practical ones: the 528-litre luggage compartment gives you plenty of freedom to transport your luggage. The rear seats can be split 60/40 or folded for a flat loading area, creating 1,642 litres of luggage space. Plus, there are plenty of options to help you store and secure your items, like handy hooks and separation nets that can be fitted behind the front or the rear seats, a side tray, a pull-out boot cover and an underfloor luggage box. The Sportswagon is simply an expert at using space wisely.

#### 1. Space big and small:

Both the 5 door and Sportswagon come with cup holders, armrest storage and a spacious ventilated glove compartment

#### 2. Ample luggage space:

With the rear seats folded flat, the Sportswagon offers 1,642 litres of luggage space. That's plenty for any adventure. And for effortless loading, there's also a flat boot sill

#### 3. Sportswagon's clever luggage rail system:

The vertical rails can be fitted with flexible aluminium bars and adjusted individually to suit different sizes and requirements. They also come with handy belts for round items, whilst luggage hooks slide along the rails as required

#### 4. Ingenious underfloor storage:

The Sportswagon has two underfloor storage compartments: a deep area at the front and a larger compartmentalised underfloor box at the centre for different-sized items. Even the areas around the wheel wells feature practical storage compartments on either side



cee'd interior grade options

## > The many faces of attraction

The Kia cee'd is a head-turner, inside and out: its interior can be matched with a choice of stylish upholstery and trims, all fitted to the highest standards.

There are five styles to choose from: standard grades LX and EX, the optional EX grades and, for the ultimate in comfort and style, leather seats as part of the Sports Package.

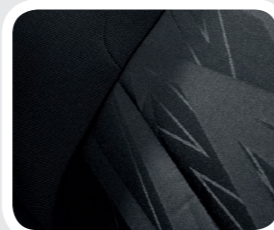
### LX STANDARD GRADE (BLACK)



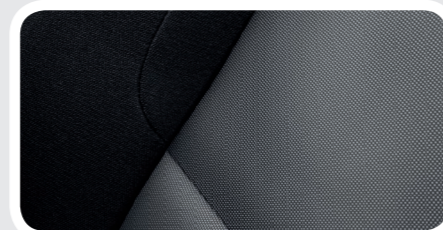
**The cee'd LX standard: stylish, refined, confident**

**Grade features include:**

- Black one-tone dashboard
- Black fabric seat upholstery
- Silver metal paint-effect centre fascia
- Silver metal paint-effect door handle



### EX STANDARD GRADE (BLACK)

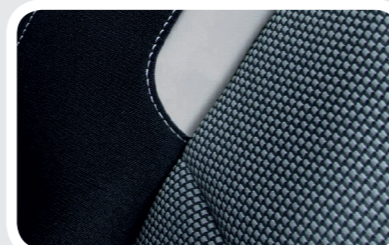


**The new EX standard grade with contrasting horizontal colour elements**

**Grade features include:**

- Black one-tone dashboard
- Black fabric seat upholstery
- Silver metal paint-effect centre fascia
- Silver metal paint-effect door handle

### EX OPTION GRADE 1 (BLACK)

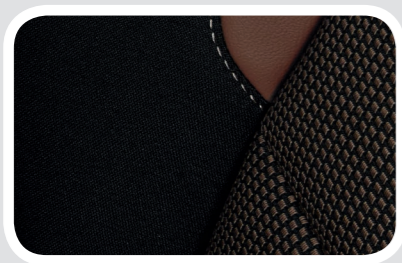


**This optional EX grade comes with high-gloss black trim and eye-catching woven upholstery**

**Grade features include:**

- Black one-tone dashboard
- Black fabric seat upholstery
- Black high-gloss centre fascia
- Black high-gloss door handle and steering wheel trim
- Grey headliner

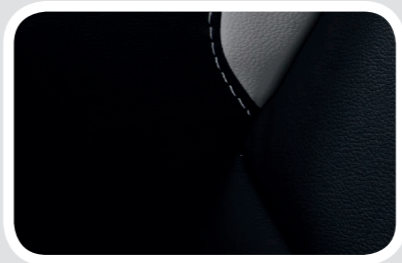
EX OPTION GRADE 2 (BROWN)



The new Colour Package 2 features upholstery in elegant brown nuances, a perfect match for the high-gloss trim throughout.

- Grade features include:**
- Black one-tone dashboard
  - Brown fabric seat upholstery
  - Black high-gloss centre fascia
  - Black high-gloss door handle and steering wheel trim

EX OPTION SPORTY PACKAGE (BLACK)



Leather amplifies the sporty appeal – highlighted here with a unique seat upholstery design.

- Grade features include:**
- Black one-tone dashboard
  - Black leather seats
  - Black high-gloss centre fascia
  - Black high-gloss door handle and steering wheel trim

## Driving dynamics

### > More joy in every corner

#### Retuned and refined for the most rewarding ride

Our engineers have been hard at work to make every stretch of the road more fun to drive. The extensively fine-tuned suspension features a sophisticated front MacPherson suspension and rear multi-link suspension. As a result, both cee'd models offer excellent handling and drive comfort, even on bumpy roads. Road noise and vibration have also been minimised. Plus, a range of advanced driving assistants add comfort and safety on your journey.

#### VSM (Vehicle Stability Management):

VSM works in conjunction with Motor Driven Power Steering to ensure the car stays stable when simultaneously braking and cornering, especially on wet, slippery and rough roads.

#### EBD (Electronic Brake Force Distribution)

##### + BAS (Brake Assist System):

EBD increases stability and helps prevent skidding. The system automatically optimises the distribution of braking power between the front and rear wheels in relation to changes in car weight during braking. BAS detects emergency braking depending on how quickly you step on the brake pedal. It instantly applies full braking force, which helps shorten the overall braking distance.

#### HAC (Hill Start Assist Control):

Perfect for starting on a steep hill, HAC prevents you from rolling backwards. The brake grip is maintained for two seconds until you accelerate.

#### 1. FLEX STEER:

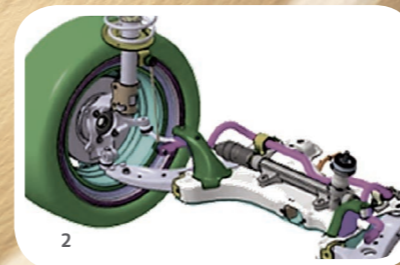
With optional Flex Steer, you can adjust the steering performance to your personal driving style: it includes Comfort mode for easy parking and urban driving, Normal mode and Sports mode for motorway driving

#### 2. Excellent handling and comfort:

Thanks to the newly refined MacPherson front suspension and the rear multi-link suspension

#### 3. ESC (Electronic Stability Control):

If you have to brake suddenly, ESC applies the correct amount of brake pressure to each individual wheel. It also reduces engine power to help you maintain control and bring your car back on course





**1. Dual-Clutch Transmission (6-speed & 7-speed DCT):**

Enjoy racing driver flair, courtesy of the dual-clutch transmission. This latest generation dual-clutch transmission combines sporty, effortless driving with high fuel efficiency

**2. Manual gearbox:**

Quick, smooth gear changes thanks to Kia's latest transmission technology



Powertrain & transmission

➤ Everything for a refined performance

**CEE'D POWERTRAINS:**

Increased output and torque across the board, lower CO<sub>2</sub> emissions – the refined engines will boost your appetite for driving. An impressively responsive 1.0 litre T-GDI (100 PS) engine now joins the petrol line-up, while the state-of-the art diesel range features a high-powered 1.6 litre CRDi (136 PS) engine. For a sporty yet efficient drive, it can be paired with our latest 7-DCT Dual-Clutch Transmission. All five engines on both the 5 door and Sportswagon feature innovative weight-reducing measures to help increase fuel efficiency. Start/Stop (ISG) technology is also available for individual models.

**3 PETROL ENGINES**

**The three-cylinder 1.0 litre T-GDI (100/120 PS)**

Compact, efficient, yet with plenty of power, this brand-new petrol engine delivers 172 Nm max. torque.

**The four-cylinder 1.4 MPI (100 PS)**

Offers 135 Nm at 4,000 rpm, consuming 5.6 l (hatchback and SW) fuel per 100 km. CO<sub>2</sub> emissions can be reduced to 129 g/km (with ISG and EcoDynamics Pack).

**The four-cylinder 1.6 GDI (135 PS)**

Features Variable Valve Timing for improved performance at all speeds. The petrol direct-injection engine produces 165 Nm at 4,850 rpm and consumes just 5.2 l (hatchback)/5.9 l (SW) fuel per 100 km, while CO<sub>2</sub> levels are kept to a mere 119 g/km (hatchback)/131 g/km (SW) with the EcoDynamics Pack.

**2 DIESEL ENGINES**

**The four-cylinder 1.4 litre WGT (90 PS)**

It now delivers 240 Nm torque between 1,500 and 2,500 rpm. Keeps fuel consumption low at just 4.2 l/100 km (hatchback and SW). Plus, it only emits 109 g/km CO<sub>2</sub> emissions.

**The four-cylinder 1.6 litre CRDi (110/136 PS)**

This new highly responsive diesel model proves a fantastic performer, even at lower revs with a max. torque of 300 Nm. It also leads the way in emission reduction at just 94 g/km, one of the lowest CO<sub>2</sub> levels for a conventional combustion engine in this segment. And it only needs 3.6 l (hatchback)/3.9 l (SW) fuel per 100 km. All thanks to the EcoDynamics Pack.

**CEE'D TRANSMISSIONS:**

There's a choice of sophisticated 6-speed manual transmission as well as a 6-speed DCT (available exclusively with the 1.6 direct-injection petrol engine) and for even faster gear shifting, a 7-speed DCT dual-clutch transmission (only with 1.6 litre CRDi engine). The dual-clutch transmission offers the best of both worlds, combining a more agile, comfortable driving style with greater fuel economy. Both can be operated via the handy paddle shifters on the steering wheel.



## Safety technology

### ➤ Forward thinking for the best protection ahead

#### The cee'd is equipped with more intelligent safety technology than ever

Both cee'd models have spent hundreds of hours in rigorous tests to ensure they're prepared for any situation. But that's not all. The cee'd comes with a host of smart technologies to help you avoid danger in the first place. Our advanced Lane Departure Warning System prevents you from steering off course if you get tired and lose concentration momentarily. A camera monitors the car's position in relation to the lane and, if required, alerts you with a warning sound. The system works from 60 km/h. The cee'd also keeps a check on your tyres. If they fall below the correct pressure, an icon on the dashboard lights up. The Tyre Pressure Monitoring System is a handy way to keep you safe and to help you drive more efficiently.

#### 1. HID Xenon headlamps and Adaptive Front Lighting System (AFLS):

For enhanced visibility at night, the cee'd can be fitted with both xenon headlamps and an Adaptive Front Lighting System. This premium technology helps detect obstacles sooner. It shines the light in corners more efficiently as the swivelling headlamps adapt to the steering angle, weight and speed of the car

**High Beam Assist** automatically switches on the High Beam when light conditions require, and dips them when the system detects traffic ahead.

#### 2. Lane Departure Warning System (LDWS):

Not an alternative to a coffee break. But when tiredness sets in, this intelligent assistant helps you stay in lane on the road. The instrument cluster alerts you when you begin to move out of the lane unintentionally

#### 3. Blind Spot Detection:

Alerts you to any obstacles that you can't see in the mirrors. Radar sensors in the rear bumpers monitor the area behind you. A symbol appears in the corresponding exterior mirror if the system detects a vehicle in the Blind Spot. If you indicate to change lanes regardless, the symbol flashes, and you'll also hear a warning sound. The system works from 30 km/h

#### The Rear Cross Traffic Alert:

Uses the same radar sensors as Blind Spot Detection to help you reverse out of parking spaces or a drive. When the sensors detect a moving object\* like a car, a motorcycle or even a shopping trolley, you're warned by a sign in the instrument cluster and by a light flashing in the corresponding exterior mirror. An audible warning is also given.

\*Speed and object size restrictions apply



## Safety technology

### > Surrounded by a strong team

#### Wherever you're headed, the new Kia cee'd gets you there safely

For the greatest stability and shock absorbance, the reinforced bodyshell on both cee'd models features fully interconnected body torsion parts. It's also fitted with 6 airbags – dual front airbags, two side airbags and two curtain airbags. All safety measures have been rigorously tested to comply with the strictest European safety regulations.

#### Bodyshell:

Because your safety always comes first. The reinforced body panels are engineered with fully interconnected body torsion parts. Core members have been strengthened further and the B-pillar is made of ultra high-tensile-strength steel

#### Star performance:

Just like the hatchback, the Sportswagon has been awarded the five-star Euro NCAP safety rating



#### Airbag technology:

Six airbags protect you and your passengers in the 5 door and the Sportswagon cabins

## Eco technology

### > A lasting promise to the planet

#### Climate and wallet-friendly ideas

Fuel-stretching engine Start/Stop (ISG) technology is available on individual cee'd engines, which reduces fuel consumption and CO<sub>2</sub> emissions by automatically shutting down the engine when the car is at a standstill. This option also includes the eco-friendly Energy Regeneration System. It's activated when you take your foot off the accelerator. The Energy Regeneration System uses the kinetic energy that is normally lost to recharge the battery – making it fuel and planet-friendly.



#### 1. Energy Regeneration System:

Uses the kinetic energy when you take your foot off the accelerator to recharge the cee'd batteries

#### 2. Start/Stop system (ISG):

Stop at a traffic light and the cee'd engine is automatically switched off when your foot is off the clutch. As soon as you resume the journey, the engine restarts. A great way to save fuel and convenient for city driving



This badge shows you're doing your bit to save fuel and to reduce emissions with the Start/Stop system.

#### Active Eco Display:

Another intelligent measure for more efficient driving, the Active Eco System manages the air conditioning compressor and the alternator to save energy whenever possible

#### ECO Pack:

This technology includes a whole range of efficiency measures: intelligent stop-and-go, a gear-shift indicator to help you drive more efficiently and energy-saving car tyres, which reduce fuel usage through less road friction.

Equipment options

➤ Whatever takes your fancy

5 door or Sportswagon – here's a taster of all the stylish, practical and convenient features the cee'd has in store for you.

1. Luggage area underfloor storage:

With different-sized compartments plus two storage areas with individual lids positioned next to each rear wheel (SW only)

2. Luggage rail system:

Flexible bars slide along the rails to secure various-sized items, including round ones, fastened by belts (SW only)

3. Headlamp washer:

To see and be seen

4. Fintail door handle and grip:

Striking design meets functionality

5. Heated steering wheel:

Perfect for cold starts

6. Paddle shifters:

Change gears without taking your hands off the wheel

7. Rear armrest cupholders:

One of many handy storage areas throughout the cee'd

8. Air vents (front):

For the best climate at the front of the cabin

9. Air vents (rear):

Adjustable vents for the rear passengers

10. Alloy pedals:

A must for the sporty driver

11. Standard instrument cluster:

Stylish, ergonomic essential information

12. Glovebox:

Spacious and ventilated to keep things cool

13. Rear-view camera:

Helps you park your cee'd

14. Manual air conditioning:

Adjust the temperature the way you like it

15. Side mirror with indicator:

Looks great and keeps you safe

16. Welcome light:

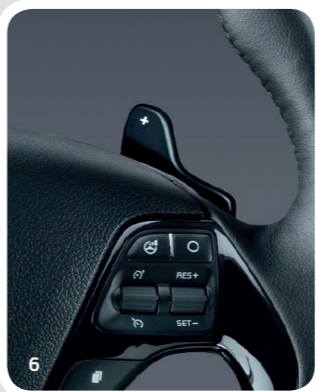
Puddle light (underneath the door mirror) and pocket light (inside the door handle), available only in combinations with smart key

17. Tyre Pressure Monitoring System:

An icon on the dashboard lights up if the tyres fall below the correct pressure

18. Chrome exhaust pipe:

For a stylish statement (5 door only)



Cassa White (WD)



Deluxe White (HW2)



Sparkling Silver (KCS)



Sirius Silver (AA3)



Bronze Metal (MY3)



Track Red (FRD)



Infra Red (AA1)



Sand Track (D5U)



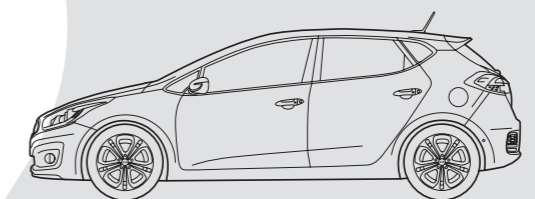
Planet Blue (D7U)



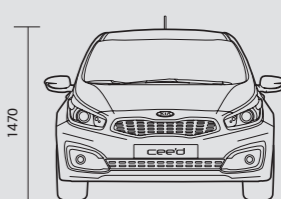
Dark Gun Metal (E5B)



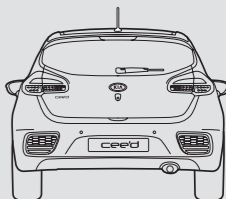
Black Pearl (1K)



900 2650 760



1470 1563 / 1553 / 1555 / 1549 1780 / 2035 (with mirrors)



1571 / 1561 / 1563 / 1557

cee'd 5 door exterior dimensions (mm)



**Side door mouldings and Sohari alloy wheel:**

Protect the sporty look of your cee'd with stylish accessories that guard your paintwork against scratches and dents. The mouldings can be painted to match your car's body colour. The 17" Sohari bi-colour alloy wheels complete the dynamic picture.



**Kia accessories**

**Indulge in genuine excitement**

The cee'd is designed for all those who like to make a bold statement. If you crave more individual and practical touches for your hatchback or your Sportswagon, take a look at our genuine accessories. They have all been developed and manufactured with precision to fit your cee'd perfectly using only the best-quality materials. For more information and advice, please ask your local Kia dealer for the accessories brochure.

**1. Cross bars:**

Load more and enjoy more. Light and easy to install, these strong and perfectly fitting aluminium cross bars help you transport all you'll need on your next Sportswagon adventure.

**2. Roof rack and ProRide bike carrier:**

Our strong but lightweight aluminium roof rack provides a secure basis for mounting your choice of roof carrier systems, such as roof boxes or bike carriers. These are suitable for vehicles without a panorama sunroof.

**3. Entry guards:**

How to make a great impression whenever you open the door: the entry guards fit perfectly and provide effective protection against scuffs and scratches.

**4. Textile floor mats, velour:**

Designed to enhance and protect the interior of your cee'd, these tailor-made, high-quality velour mats fit perfectly and are secured by standard fixing points and anti-slip backing. The set of four individual mats includes a driver's mat featuring the cee'd logo.

**5. Wind deflectors, front:**

Enjoy a fresh breeze or the pleasant warmth of the sun while driving. With the aerodynamically shaped front door wind deflectors, you can leave the window slightly open without feeling any air turbulence or raindrops.



195/65R 15" steel wheel with wheel cover



205/55R 16" steel wheel with wheel cover



205/55R 16" alloy wheel



205/55R 16" alloy wheel



225/45R 17" alloy wheel

**Paint, wheels & technical specifications**

**Your one and only cee'd**

Our designers have done their bit, now it's over to you.

Choose your favourite colour, wheels and type of engine for your cee'd.

**cee'd specifications**

Engines	1.0 T-GDi Petrol 100PS or 120PS	1.4L MPI Petrol 100PS	1.6L GDi Petrol 135PS	Ull 1.4L Diesel 90PS	Ull 1.6L Diesel 110PS or 136PS
Engine type	T-GDi Three-cylinder	Four-cylinder MPI	GDi four-cylinder	WGT four-cylinder	VGT four-cylinder
	MLA 12-valve	HLA 16-valve	MLA 16-valve	DOHC 16-valve	DOHC 16-valve
Displacement (cc)	998	1,368	1,591	1,396	1,582
Max. power (ps/rpm)	100/120/6,000	100/6,000	135/6,300	90/4,000	110/136/4,000
Max. torque (kg.m/rpm)	17.5/1,500-4,000	13.7/4,000	16.8/4,850	24.5/1,500-2,500	28.6/1,500-3,000
Top speed (km/h) 5dr	185/190	183	195	173	190/197
Top speed (km/h) SW	182/187	181	192	172	188/194

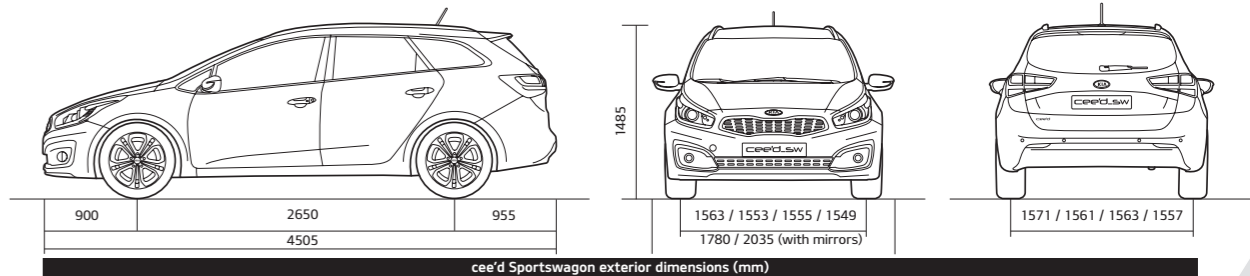
Transmissions					
5 door – manual	6-speed	6-speed	6-speed	6-speed	6-speed
5 door – DCT	N/A	N/A	N/A	N/A	7-speed**
Sportswagon – manual	6-speed	6-speed	6-speed	6-speed	6-speed
Sportswagon – DCT	N/A	N/A	6-speed	N/A	7-speed**

cee'd 5 door dimensions			Unit (mm)		
Overall length	4,310	Shoulder room (front)	1,420	Ground clearance	140
Overall width (excluding door mirrors)	1,780	Shoulder room (rear)	1,392	Hip room (front)	1,360
Overall height	1,470	Wheelbase	2,650	Hip room (rear)	1,295
Headroom (front)	1,018	Wheel tread (front)	1,563		
Headroom (rear)	976	Wheel tread (rear)	1,571	Luggage area volume (rear seats fully folded up)	1,318 L
Legroom (front)	1,067	Overhang (front)	900		
Legroom (rear)	894	Overhang (rear)	760	Fuel tank (litres)	53.0

ce'd Sportswagon dimensions			Unit (mm)		
Overall length	4,505	Shoulder room (front)	1,420	Ground clearance	140
Overall width (excluding door mirrors)	1,780	Shoulder room (rear)	1,392	Hip room (front)	1,360
Overall height	1,485	Wheelbase	2,650	Hip room (rear)	1,295
Headroom (front)	1,024	Wheel tread (front)	1,563	Luggage area volume	528 L
Headroom (rear)	996	Wheel tread (rear)	1,571	Rear seats fully folded	1,642 L
Legroom (front)	1,067	Overhang (front)	900		
Legroom (rear)	894	Overhang (rear)	955	Fuel tank	53 L

For detailed information on tyre labelling please visit our website: [www.kia.com/eu/quality/tyre-labelling-information](http://www.kia.com/eu/quality/tyre-labelling-information)

\*All information and illustrations are based on data available at the time of publication and are subject to change without notice.  
\*\* Not available with 110PS output



Peace of mind

## > The new Kia cee'd – seven more reasons why you simply can't say no

### 7-year vehicle warranty

Every Kia benefits from a 7-year/150,000 km new car warranty (up to 3 years unlimited; from 4 years 150,000 km). This bumper-to-bumper warranty is free and transferable to subsequent owners, provided the car is regularly maintained in accordance with the servicing schedule.

### 5-year paint warranty & 12-year anti-perforation warranty

High-quality body paint ensures long-lasting protection and shine for your new Kia. It also comes with superior corrosion protection and a 12-year warranty against rust from the inside out.

### Stay in touch with Kia

Visit [www.kia.com](http://www.kia.com) for all the latest news. Find out more about Kia and our exciting new car range. Get updates on achievements in alternative fuel development, like liquid gas, hybrid and fuel cell technology. Or discover what our Environment Research Centre is working on.

We're also involved in major sporting events: Kia is an official partner of both UEFA and FIFA. We sponsor the Australian Open and the tennis star Rafael Nadal.

### Financing

Your local Kia dealer can help you with a financing plan that's best suited to your needs. Please ask for details.

### The Kia 7-year warranty

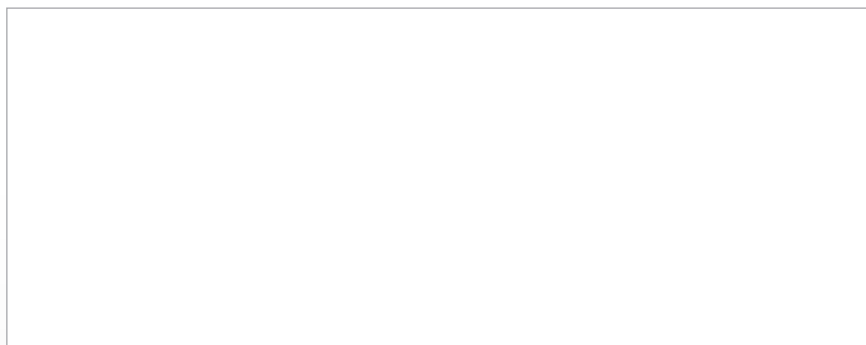
7-year/150,000 km new car warranty. Valid in all EU member states (plus Norway, Switzerland, Iceland and Gibraltar), subject to local terms and conditions





The Kia 7-year/150,000 km new car warranty.  
Valid in all EU member states (plus Norway,  
Switzerland, Iceland and Gibraltar), subject to  
local terms and conditions.

[www.kia.com](http://www.kia.com)



Kia Motors Europe GmbH  
Theodor-Heuss-Allee 11  
60486 Frankfurt am Main  
Germany  
[www.kia.com](http://www.kia.com)

All information, illustrations and specifications are correct at the time of printing and are subject to change without notification. The models and specifications shown in this brochure may vary from the models available in your market. Due to the limits of the printing process, the car body colours shown may differ slightly from the actual colours. Please contact your local Kia dealer for the most recent information.

00.000000



The Power to Surprise