



EV



2017 SOUL EV



EPA-ESTIMATED RANGE ON FULL CHARGE¹

The ultimate high-energy way to roll

The 2017 all-electric Kia Soul EV[†] is as technologically advanced as it is fun to drive. It features an advanced lithium-ion polymer battery that provides an impressive EPA-estimated range of 93 miles on a full charge¹ — eliminating stops at the gas station and oil changes while producing zero emissions. It also delivers outstanding acceleration, thanks to a 109-hp electric motor that produces 210 lb.-ft. of torque. The battery's flat, compact design and location beneath the floor contribute to a low center of gravity, which helps the Soul EV deliver precise and agile handling that you'll enjoy every time you drive. Like all Kia models, every Soul EV comes with an industry-leading, 10-year/100,000-mile warranty program.² All of which gives you a positively high-charged way to roll.





Soul EV is built around EcoDynamics, Kia's forward-looking philosophy that focuses on reducing environmental impact and makes social responsibility a high priority.

Expand your horizons

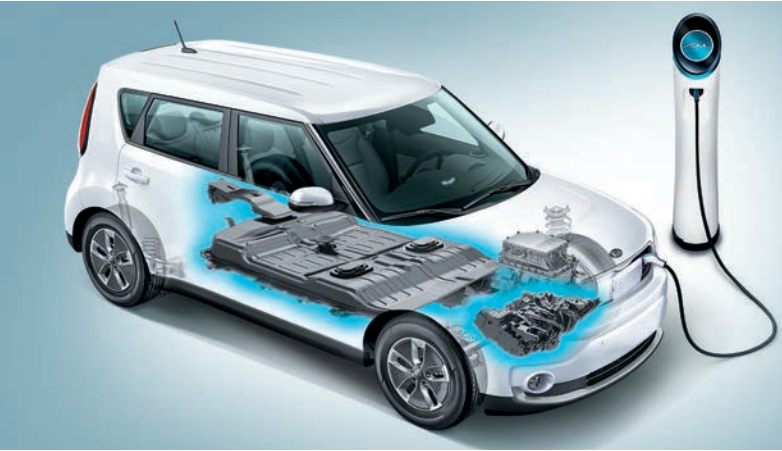
With Soul EV, Kia's engineers dedicated themselves to optimizing energy efficiency¹ so that you can confidently plan your travels and get where you need to go. The Soul EV has a variety of technologically advanced features to help increase driving range and help you monitor energy consumption. First, the heating* and air-conditioning system includes several available innovative technologies that minimize energy use. In addition, regenerative braking captures a portion of the vehicle's kinetic energy, which is fed back into the battery while you're coasting or braking, while super low-rolling-resistance tires further contribute to efficient operation. To help keep you informed, the available UVO eco³ Infotainment System* provides key information like charging status, total driving range, energy efficiency, and the location of the nearest charging station³ — information that you can also access through a compatible smartphone⁴ app and on the web. Plus, UVO eco³* provides feedback on your driving habits to help you drive more efficiently.

ENERGY EFFICIENCY¹

Level 2 (240V) charging station shown is not available for purchase and does not come with vehicle. Actual charging stations will vary. 120V charger is included with vehicle. 1, 3, 4, * See Features and Specifications pages for availability and endnotes. Not all optional features are available on all trims.

SOUL EV + (plus) SHOWN

Meticulously engineered to maximize efficiency¹

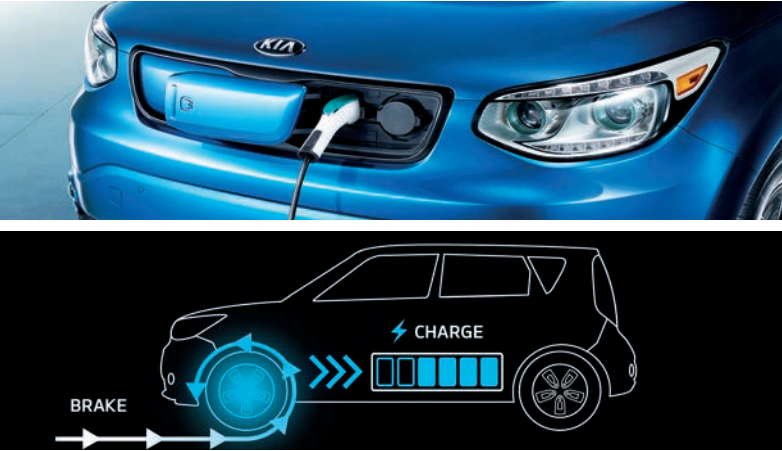


ADVANCED AND POWERFUL LITHIUM-ION POLYMER BATTERY

A 27-kWh, 360-volt, 192-cell lithium-ion polymer battery is designed for high-energy capacity and thermal stability. Its flat design and location beneath the floor mean there's minimal battery intrusion into the cabin, which helps Soul EV provide plenty of interior space. It is engineered with state-of-the-art materials to increase durability — allowing Kia to back the battery with a 10-year/100,000-mile warranty² — while also reducing its weight and increasing energy density.

THREE WAYS TO CHARGE AND GO

Two charging ports are located behind a sliding door in the front grille. The first port is for 120V charging — or 240V charging that allows a full charge in less than five hours. The second is a DC Fast Charge port designed for 480V charging that can achieve a 94 percent charge from empty in 43 minutes.[†]



HIGHLY EFFICIENT REGENERATIVE BRAKING

To help maximize Soul EV's driving range, a third-generation regenerative braking system captures a portion of the vehicle's kinetic energy. As you brake or coast, kinetic energy is captured and fed back into the battery. You can choose between four driving modes: Drive or Brake with Active ECO mode either on or off.

UVO eco³ INFOTAINMENT SYSTEM*

With this available system, you can stay informed of key vehicle and battery systems via the web, phone app, or in your EV. You can also access services like 911 Connect⁵ and Enhanced Roadside Assist⁶



AUTOMATICALLY CHARGE OVERNIGHT*

When lower electric rates are available during off-peak hours, you can schedule charging with available UVO eco³* Charging Reservation. You can also set the schedule to repeat automatically.

PREHEAT OR PRECOOL THE CABIN*

Climate Scheduling with available UVO eco³* reduces energy use by preheating or precooling the interior before starting the car, while it's still plugged into a charger.

CONNECT TO YOUR SMARTPHONE**

Control available functions like Climate Scheduling, or even remotely unlock the doors, by sending commands with a compatible smartphone⁴ app through the available in-vehicle wireless modem.³



CONTROLLED AIRFLOW INTO THE CABIN

An air-intake control system regulates incoming airflow to minimize air-conditioning usage, adjusting interior temperature by managing the blending of outside and inside air.

INDIVIDUAL VENTILATION

To avoid significant air-conditioning energy drain, Soul EV allows you to select driver-only ventilation to completely shut off the airflow to the passenger-side vents.

REHARNESSED HEAT ENERGY*

The available heat pump is smaller and more efficient than a traditional heater and A/C system. For heating, it utilizes waste heat from the vehicle's electronics to increase the system's overall efficiency.

ENERGY EFFICIENCY¹

[†]Fast Charge times based on charger speed of 50 kW. Level 2 (240V) charging station shown is not available for purchase and does not come with vehicle. Actual charging stations will vary. 120V charger is included with vehicle. Simulated screen shown. Images shown for illustration only.

1, 2, 3, 4, 5, 6, * See Features and Specifications pages for availability and endnotes. Not all optional features are available on all trims.

SOUL EV + (plus) SHOWN



Uncompromising comfort for all

Soul EV provides a spacious interior with plenty of headroom and legroom for driver and passengers. For enhanced comfort, it features a heated steering wheel and heated front seats, plus available features like ventilated front seats* and heated rear outboard seat cushions.* Soft-touch materials on the dash and upper door panels and available leather seat trim* add sophisticated styling and comfort. In addition, attention to aerodynamics, combined with superb interior insulation that reduces road noise, provides an exceptionally quiet ride.



INTERIOR FEATURES

Dedicated to your convenience

APPLE CarPlay™^{7*} ANDROID AUTO™^{8*}

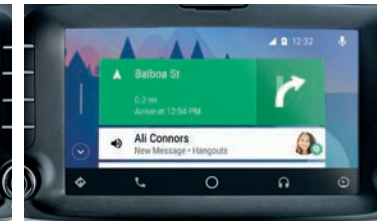
Apple CarPlay and Android Auto let you take full advantage of the available UVO eco^{3*} Infotainment System by simply connecting your compatible smartphone⁴ with a USB cable. You can then use it to navigate to your destination, make phone calls and retrieve voice mail, receive text messages and respond to them verbally, and more. Plus, compatible apps are displayed onto the touch screen.

FRONT AND REAR PARK ASSIST SYSTEM^{9*}

An available sonar system in the front and rear bumpers alerts you with audible and visual warnings if it detects certain objects close to your vehicle when you're parking.

REAR-CAMERA DISPLAY⁹

To help you see things behind your vehicle that you might not see by looking over your shoulder, Soul EV features a Rear-Camera Display with a large and bright screen.



VOICE-COMMAND NAVIGATION^{3*}

This available system features a vivid 8-inch color touch screen and delivers valuable continuously updated highway conditions from SiriusXM Traffic™¹⁰

HEATED & VENTILATED FRONT SEATS*

Heated front seats, available ventilated front seats,* and available heated rear outboard seat cushions* help ensure year-round driving comfort.

PUSH-BUTTON START

To make everyday driving more convenient, Smart Key remote lets you start or stop the motor with the push of a button, even with the key fob in your pocket or purse.

PANORAMIC SUNROOF*

Brighten up any drive and let fresh air in with the available panoramic sunroof with power sunshade on the Soul EV + *(plus)*. The front portion tilts and slides.

3, 4, 7, 8, 9, 10, * See Features and Specifications pages for availability and endnotes. Not all optional features are available on all trims. Simulated screens shown. Images shown for illustration only.

SOUL EV + *(plus)* WITH SUN & FUN PACKAGE SHOWN



SAFETY

Advanced safety systems[†] designed for peace of mind

- ADVANCED AIRBAGS**

Dual front airbags, full-length side curtain airbags, and dual front seat-mounted side airbags comprise a sophisticated system managed by advanced sensors that can even respond in certain rollover situations.¹¹
- SAFETY-ORIENTED BATTERY**

Battery-cell chemistry and construction are designed for thermal stability, with a device to monitor temperature to help prevent overheating. Plus, five crossbeams help protect against under-car intrusion.
- VEHICLE STABILITY MANAGEMENT (VSM)**

VSM adds steering-direction-control capability to Soul EV. This advanced system intervenes in appropriate situations to help the driver regain control of the vehicle.
- ELECTRONIC STABILITY CONTROL (ESC)**

ESC provides improved directional stability to help maintain better control in difficult driving situations. During emergency maneuvers, it can control the motor and brakes to help keep your Soul EV on course.
- TRACTION CONTROL SYSTEM (TCS)**

When TCS senses wheelspin during vehicle acceleration, it uses motor power and brake force to help transfer power to the wheels that have the most traction.
- BRAKE ASSIST SYSTEM (BAS)**

If BAS detects emergency braking, based on how quickly you step on the brake pedal, it instantly applies full braking force to help shorten your overall stopping distance.
- ELECTRONIC BRAKE-FORCE DISTRIBUTION (EBD)**

To help maintain more consistent braking in the event that loads and weight distribution in the vehicle change, EBD adjusts the front-to-rear balance of brake pressure.
- HILL-START ASSIST CONTROL (HAC)**

To help keep you from rolling backward when starting off on a steep hill, HAC automatically holds the brake pressure for two seconds after you take your foot off the brake pedal.

[†]No system, no matter how advanced, can compensate for all driver errors, driving conditions, accidents, and/or injury. Always drive responsibly. Simulated image. Shown for illustration only. ¹¹ See Specifications page for endnote.

SOUL EV + (plus) SHOWN

FEATURES

EV + (plus) SUN & FUN PACKAGE

Panoramic sunroof	—	—	P
Front speaker lights	—	—	P
LED interior lighting	—	—	P

MECHANICAL & EXTERIOR

27 kWh lithium-ion polymer battery	●	●	●
Battery heating system††	—	○	○
109-hp, AC Synchronous Permanent Magnet electric motor	●	●	●
6.6 kW On-Board Charger	●	●	●
Sliding charge port door w/light	●	●	●
DC Fast Charge port (480V) (CHAdEMO)	●	●	●
AC charge port (120V, 208V–240V) w/nozzle-locking function	●	●	●
120V charge cable	●	●	●
16" aerodynamic alloy wheels w/super low-rolling-resistance tires	●	●	●
Pedestrian warning system	●	●	●
Regenerative braking system	●	●	●
Two-mode transmission shifter (Drive/Brake)	●	●	●
Heated, power outside mirrors	●	—	—
Heated, power outside mirrors w/turn-signal indicators	—	●	●
Power-folding outside mirrors	—	—	●
Projection headlights w/auto light control	●	●	●
LED accent lights	●	●	●
Front fog lights	—	—	●
LED taillights	●	●	●
Privacy glass	●	●	●
Aero windshield wipers	—	—	●

EV-e†
EV
EV + (plus)

INTERIOR & CONVENIENCE

Heat pump HVAC system	—	●	●
Driver-only HVAC function	●	●	●
AM/FM/SiriusXM®10 audio system w/6 speakers	●	●	●
UVO eco3 Infotainment System w/voice-command navigation & Apple CarPlay™7 & Android Auto™8	—	●	●
Rear-Camera Display9	●	●	●
Front & Rear Park Assist System9	—	—	●
Push-button start w/Smart Key	●	●	●
USB/auxiliary input jacks w/illumination	●	●	●
Bluetooth®12 wireless technology	●	●	●
Steering-wheel-mounted3 audio controls	●	●	●
Cruise control	●	●	●
Active ECO mode	●	●	●
FlexSteer™ driver-selectable steering assist	●	●	●
Electronic parking brake	●	●	●
Power windows w/driver's one-touch auto down	●	●	●
3.5" OLED meter cluster screen	●	●	●
Auto-dimming rearview mirror	—	—	●
Heated steering wheel	●	●	●
2 front 12V power outlets	●	●	●
12V power outlet in cargo area	—	—	●
Luggage net	—	—	●
Cargo cover	—	—	●
Tire-Pressure Monitoring System (TPMS)13	●	●	●

EV-e†
EV
EV + (plus)

SEATING & TRIM

Gray two-tone cloth seats	●	●	—
Gray two-tone leather seats	—	—	●
Ventilated front seats	—	—	●
Heated front seats (2 levels)	●	●	—
Heated front seats (3 levels)	—	—	●
Heated rear outboard seat cushions (2 levels)	—	—	●
6-way adjustable driver's seat	●	●	●
60/40 split-folding rear seat	●	●	●
Soft-touch dash & front upper door panels	●	●	●
Leatherette cluster housing & center door trim	—	—	●
Front-passenger-seat side tray	—	—	●

RESTRAINT & SAFETY SYSTEMS11

Dual front advanced airbags	●	●	●
Dual front seat-mounted side airbags	●	●	●
Full-length side curtain airbags	●	●	●
Front seat-belt pretensioners	●	●	●
Anti-lock Braking System (ABS)	●	●	●
Vehicle Stability Management (VSM)	●	●	●
Electronic Stability Control (ESC)	●	●	●
Traction Control System (TCS)	●	●	●
Brake Assist System (BAS)	●	●	●
Electronic Brake-force Distribution (EBD)	●	●	●
Hill-start Assist Control (HAC)	●	●	●
Side-impact door beams	●	●	●
Front & rear crumple zones	●	●	●
Lower Anchors and Tethers for Children (LATCH)	●	●	●

EV-e†
EV
EV + (plus)

SPECIFICATIONS

MOTOR

Type	AC Synchronous Permanent Magnet
Horsepower (SAE net)	109 hp (81.4 kW)
Torque (SAE net)	210 lb.-ft.
Transmission	1-speed
Active ECO modes	ECO on/ECO off
Drive modes	Drive/Brake
On-Board Charger	6.6 kW

BATTERY

Type	Lithium-ion polymer
Energy	27 kWh
Power	90 kW
Volts	360V
Cooling	Air-cooled
Cells/modules	192 cells/8 modules
Charge time (from empty) 120V	24+ hr.
208V–240V	4 hr., 10 min. – 4 hr., 50 min.
480V (94% charge)	43 min.14

DIMENSIONS

Wheelbase	101.2 in.
Length/Width/Height	163.0 in./70.9 in./63.0 in.
Headroom (front/rear)	39.6 in./39.5 in.
Shoulder room (front/rear)	55.5 in./54.7 in.
Legroom (front/rear)	40.9 in./36.0 in.
Hip room (front/rear)	53.2 in./49.3 in.
Passenger volume	97.1 cu. ft.
Cargo volume (rear-seat up/down)	18.8 cu. ft./49.5 cu. ft.

CURB WEIGHT

Soul EV/+ (plus)	3,289 lb.; 3,366 lb. w/panoramic sunroof option
------------------	---

BODY & CHASSIS

Layout	Front motor, front-wheel drive
Front suspension	Independent, MacPherson struts, stabilizer bar
Rear suspension	Coupled Torsion Beam Axle
Steering type	Electric Power Steering (EPS)

TIRES & BRAKES

Tire size	205/60R16 SLRR
Brake type	Power-assisted, ABS
Front/rear	11.8-in. ventilated discs/ 11.2-in. solid discs
Regenerative braking	Down to 1.9 mph

2017 EPA ESTIMATES1

Driving range	93
City/Highway MPG Equivalent (MPGe)	120/92
Combined MPG Equivalent (MPGe)	105

INDUSTRY-LEADING WARRANTY PROGRAM2

- 10-year/100,000-mile limited powertrain warranty
- 5-year/60,000-mile limited basic warranty
- 5-year/100,000-mile limited anti-perforation warranty
- 5-year/60,000-mile 24-hour roadside assistance
- 10-year/100,000-mile limited battery warranty

ENDNOTES

1. Based on EPA estimates. Actual range and mileage will vary with options, driving conditions, driving habits, and your vehicle's condition. **2.** Warranties include 10-year/100,000-mile powertrain and 5-year/60,000-mile basic. All warranties and roadside assistance are limited. See retailer for warranty details. **3.** Distracted driving can result in a loss of vehicle control. Never use a handheld device or vehicle system that takes your focus away from safe vehicle operation. Navigation is for information purposes only, and Kia does not make any warranties about the accuracy of the information. No subscription fee for UVO eco for 3 years. No subscription fee for SiriusXM Travel Link and charging-station location-information service for 3 years. App uses your smartphone cellular-data service. Normal cellular service rates will apply. Internet hotspot connection can be made to your personal wireless Internet at home or to a smartphone device with Internet service plan (normal cellular service rates may apply). **4.** Apple iPhone® and select Android™ devices only are UVO eco-compatible. iPhone® is a registered trademark of Apple Inc. Android™ is a trademark of Google Inc. **5.** 911 Connect activates after airbag deployment. Requires a wireless signal. **6.** 24-hour Roadside Assistance is a service plan provided by Kia Motors America, Inc. Limitations apply. See Kia Warranty and Consumer Information Manual for details. Requires a wireless signal. **7.** Apple, the Apple logo, and iPhone are trademarks of Apple Inc., registered in the US and other countries. Apple CarPlay is a trademark of Apple Inc. **8.** ©2016 Google Inc. Google is a registered trademark and Google Maps, and Android Auto are trademarks of Google Inc. **9.** These features are not substitutes for safe driving and may not detect all objects surrounding vehicle. Always drive safely and use caution. **10.** SiriusXM audio and data services each require a subscription sold separately, or as a package, by Sirius XM Radio Inc. If you decide to continue service after your trial, the subscription plan you choose will automatically renew thereafter and you will be charged according to your chosen payment method at then-current rates. Fees and taxes apply. To cancel you must call SiriusXM at 1-866-635-2349. See SiriusXM Customer Agreement for complete terms at www.siriusxm.com. All fees and programming subject to change. Traffic information not available in all markets. Sirius, XM, SiriusXM, and all related marks and logos are trademarks of Sirius XM Radio Inc. **11.** For maximum protection, always wear your seat belt. No system, no matter how advanced, can compensate for all driver errors, driving conditions, and/or injury. **12.** The *Bluetooth*® word mark and logos are registered trademarks owned by Bluetooth SIG, Inc. and any use of such marks by Kia is under license. Other trademarks and trade names are those of their respective owners. A compatible *Bluetooth*®-enabled cell phone is required to use *Bluetooth*® wireless technology. **13.** Even with the Tire-Pressure Monitoring System, check your tire pressure on a regular basis. **14.** Fast Charge times based on charger speed of 50 kW.

FEATURES

● STANDARD ○ OPTIONAL — NOT AVAILABLE P INCLUDED IN THE EV + (plus) SUN & FUN PACKAGE
†EV-e sold in California only. ††Available in cold-weather states only: OR, WA, East Coast. See Kia retailer for details.

SPECIFICATIONS

Electric styling



SHADOW BLACK
W/INFERNO RED ROOF
(EV + *plus*) ONLY

SHADOW BLACK
(EV & EV + *plus*) ONLY

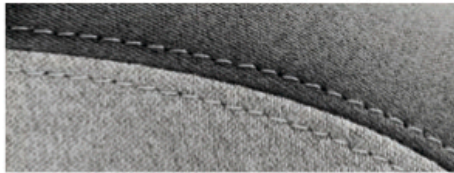
TITANIUM GRAY
(EV & EV + *plus*) ONLY

BRIGHT SILVER
(EV & EV + *plus*) ONLY

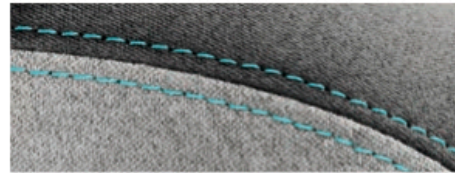
CLEAR WHITE

CARIBBEAN BLUE
W/CLEAR WHITE ROOF
(EV & EV + *plus*) ONLY

CLOUD WHITE
(EV & EV + *plus*) ONLY



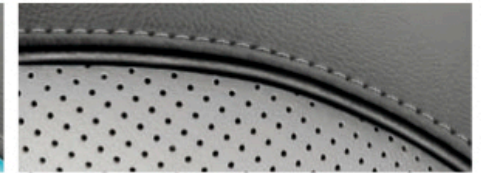
SOUL EV
GRAY CLOTH W/GRAY STITCHING
(SHADOW BLACK & BRIGHT SILVER
EXTERIORS ONLY)



SOUL EV-e/EV
GRAY CLOTH W/BLUE STITCHING
(CARIBBEAN BLUE, TITANIUM GRAY, CLEAR
WHITE & CLOUD WHITE EXTERIORS ONLY)



SOUL EV + *plus*
GRAY LEATHER W/BLUE PIPING
(CARIBBEAN BLUE, TITANIUM GRAY, CLEAR
WHITE & CLOUD WHITE EXTERIORS ONLY)



SOUL EV + *plus*
GRAY LEATHER W/BLACK PIPING
(BRIGHT SILVER, SHADOW BLACK/INFERNO
RED & SHADOW BLACK EXTERIORS ONLY)



THIS BROCHURE HAS BEEN PRINTED ON PAPER PRODUCED WITH 100% POST-CONSUMER RECYCLED FIBER

Information in this brochure is current at the time of printing. Kia Motors America (KMA) cannot guarantee the accuracy of this information. Please see kia.com for the most up-to-date vehicle information. Vehicles shown include optional equipment, and video and camera screens are simulated. By publishing this brochure, KMA does not create any express or implied warranties as to any products shown. See your Kia retailer or kia.com for details on Kia's available limited warranties. ©2016 Kia Motors America, Inc. Reproductions of this material are prohibited without the expressed written approval of Kia Motors America, Inc.