



LINCOLN

1-9-8-9

CONTINENTAL



**LINCOLN CONTINENTAL.
QUITE SIMPLY,
ONE OF THE WORLD'S
MOST ADVANCED LUXURY
AUTOMOBILES.**

The aim is to surpass all others in quality, technology and customer satisfaction.

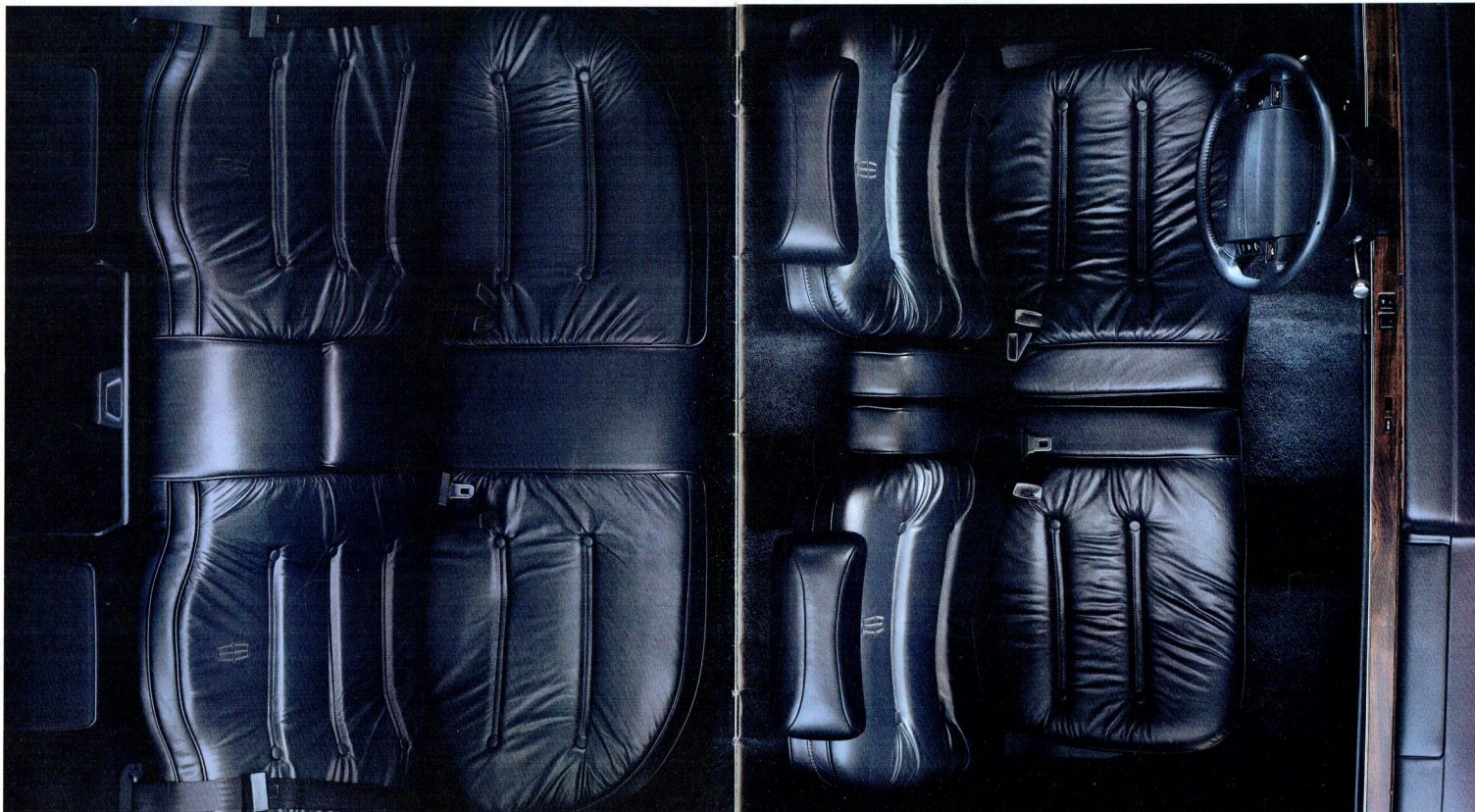
In the following pages, we will take you through the many features and technical achievements which make Continental unique. And after you've learned the finer details of Continental and actually experienced it firsthand at your Lincoln dealer, we trust you will understand our enthusiasm for this remarkable automobile.

Lincoln Continental. "What a luxury car should be."

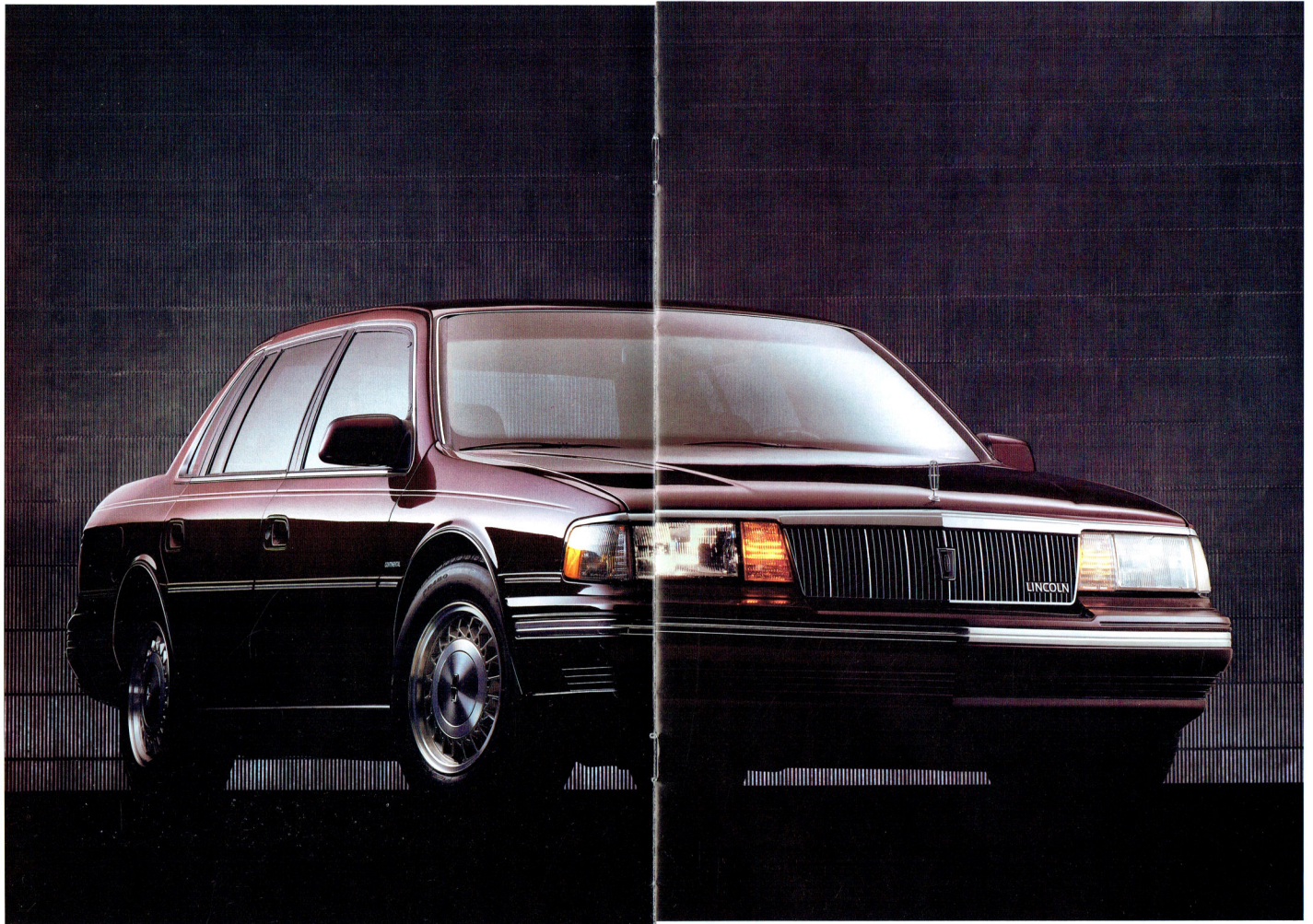
It is an unquestionably bold statement. Yet, while we take great pride in Continental, it is not our intention to be boastful. We are simply stating a fact. A fact based soundly on Continental's considerable technical innovations.

The design and engineering of Continental was guided by a philosophy that strives to satisfy those who demand nothing less than the highest standards.

*Lincoln Continental Signature Series on pages 2, 3, 4
is shown in Twilight Blue Clearcoat Metallic.*



Lincoln Continental Signature Series interior in Shadow Blue leather.



*Lincoln Continental Signature Series in
Midnight Red Clearcoat Metallic.*

WE'VE COMBINED THE WORLD'S MOST ADVANCED LUXURY CAR SUSPENSION SYSTEM WITH STEERING AND BRAKING SYSTEMS OF EQUAL ACCLAIM.

such, Continental's suspension reacts to each in an appropriately different manner.

Continental is able to do this because it rides on the world's most advanced luxury car suspension—a four-wheel-independent, self-levelling, computer-managed system with the ability to actually modify Continental's over-the-road behaviour. The result is a luxury car that excels in both ride and handling.

The suspension features nitrogen gas-pressurized MacPherson struts with integral variable-rate air springs at each wheel. The struts incorporate an innovative dual-damping mechanism that changes Continental's ride from soft to firm (or back again) within milliseconds of receiving commands from a powerful microprocessor.

A suspension so sophisticated it reacts to more than just the road

The decision to adjust the suspension damping from firm to soft, or vice versa, is based on more than simply input from the road. Sophisticated sensors in Continental's steering, brakes, engine and suspension feed information to a computer which constantly monitors road and vehicle attitude.

For instance, as Continental enters a sharp turn, its optical steering sensor reads the amount of steering-wheel turn, then converts it to lateral acceleration or G-force. When this force reaches a certain level, shock damping switches to firm to provide you with flatter cornering. This same sensor also tracks the rate of turn.

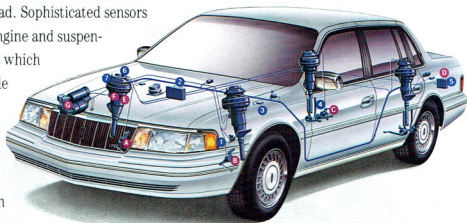
An abrupt movement of the wheel—as would occur in an avoidance manoeuvre—initiates a firm suspension setting to give you better response and improved control.

The suspension sensors measure vertical movement of the wheels as Continental negotiates road imperfections. When the rate of travel exceeds a given limit—while crossing railroad tracks, for example—the shock damping is again switched to firm. This helps minimize suspension “bottoming” and excessive bouncing after a series of severe bumps.

During rapid acceleration or hard braking, sensors will call for a firm setting to compensate for squat or dive. That means a more comfortable ride for you and your passengers.

The road is ever changing. Yet, conventional luxury car suspensions are without the capacity to change. To them, the bump, the 100 km/h (60 mph) stretch of highway and the 50 km/h (30 mph) off-ramp all look the same.

To the Continental, however, they all look decidedly different. And as



Automatic Levelling System. Sensors in front (A and B) and rear (C) monitor vehicle height. Deviation from optimum height at any wheel prompts the suspension control computer (D) to initiate small inflation/deflation adjustments in Continental's air springs (E) where appropriate. Adjustments are made by an air-spring solenoid valve (F) with air supplied by an on-board compressor (G).

Dual-Damping Ride Control. Sensors in Continental's steering (1), engine (2), brakes (3) and suspension (4) monitor lateral acceleration forces, rate of steering-wheel turn, rate of acceleration/deceleration and vertical movement of the road wheel. Sensor input to a suspension control computer (5) can initiate a damping change—from soft to firm or back again. A mechanical actuator (6) on each of Continental's dual-damping struts (7) makes the change in fractions of a second.

A suspension that refuses to compromise

For a car to function at its full potential, it must ride at its optimum design height—both front and rear. For example, a heavy load in the trunk can compromise the effectiveness of the suspension, the efficiency of the aerodynamics, even the aim of the headlamps.

In Continental, three electronic sensors keep watch over road height and stance. When weight is added to Continental, adjustments are made in the inflation of each wheel's variable-rate air springs to keep Continental level (front to rear and side to side) and at the optimum ride height.

A truly advanced luxury car should be able to compensate for varying loads. And Continental's ingenious suspension does exactly that for you.

Steering that delivers exactly what you need

The question with power steering has always been one of how much is enough? How much is too much? Ideally, a steering system would provide a different degree of assist at 90 km/h (55 mph) than it would during low speed parking manoeuvres.

Continental's solution to this question is called electrohydraulic, speed-sensitive, variable-assist power rack-and-pinion steering. It is the world's most advanced luxury-car steering system.

As speed increases, power assist decreases (steering becomes taut) in subtle, incremental steps. In fact, between 15 km/h (10 mph) and 80 km/h (50 mph), there are over 80 individual levels of power assist. It is designed to provide you with the optimum level of assist. There's full assist at slow speeds for ease of parking and minimum assist at highway speeds for proper road "feel." And graduated levels in between.

ABS gives you greater control and shorter stops

Continental's four-wheel-disc Anti-lock Brake System (ABS)—the world's most advanced brake system—helps you maintain steering control during hard braking. And on slick surfaces, ABS can reduce stopping distances by up to 25 percent.

Continental's ABS does this by not allowing the wheels to lock. Sensors at each wheel monitor rotation. A microprocessor then controls brake pressure to keep each wheel on the threshold of lock-up. It is there that maximum braking efficiency is achieved. It is braking efficiency that even the world's best professional drivers cannot duplicate.

CONTINENTAL MOVES YOU QUICKLY, CONFIDENTLY AND EFFICIENTLY.

Continental delivers power with a smooth 3.8 litre V-6. This 140-horsepower (SAE NET) engine is equipped with sequential multi-port electronic fuel injection for crisp throttle response and efficient use of fuel.

Vital engine functions such as fuel and air delivery are monitored and controlled by

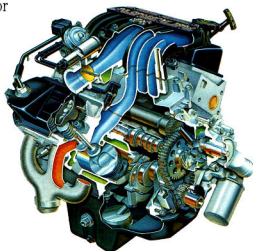
EEC-IV. With the ability to process 250,000 operations per second, EEC-IV is one of the world's most advanced engine computers. It continuously monitors and fine-tunes the engine to maximize responsiveness, driving smoothness and fuel economy. It even adjusts for altitude and the age and wear of the engine.

So advanced, even Continental's shape is a positive factor in performance

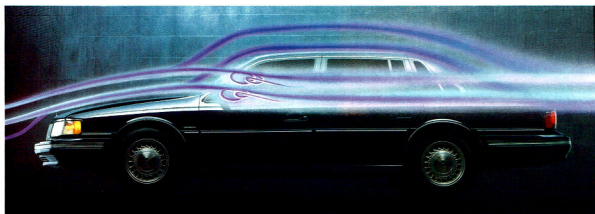
Months of analysis, testing, tweaking and retesting rewarded Continental with a shape that is a superb example of airflow management. Continental greets the oncoming air with flush-mounted halogen headlamps, a windshield that is raked at 58.6 degrees, aircraft-style doors that merge with the roofline and flush-mounted side glass. These and other exterior features blend together to achieve an impressive drag coefficient of just 0.34. In simple terms, management of the airflow around Continental provides important benefits such as improved handling and fuel efficiency, and better engine and brake cooling.

Engineered to keep noise at a whisper

When you want peace and quiet, Continental's aerodynamic shape helps keep wind noise to a minimum, while the engine's acoustically tuned intake manifold helps suppress powertrain noise. Additionally, two steel panels with an inner sound-absorption material separate passengers from the engine compartment.



A camshaft-driven counterrotating balance shaft offsets the normal power pulses of the engine. This allows Continental's 3.8 litre EFI V-6 engine to deliver smooth performance.



Continental's fluid, aerodynamic shape encourages the smooth flow of air over the body. It helps improve fuel economy, reduce wind noise and improve handling at highway speeds.

INSIDE CONTINENTAL THERE IS ROOM FOR EVERYTHING EXCEPT, PERHAPS, IMPROVEMENT.

Continental's interior is a vivid example of how an interior can be functional and comfortable.

Designed to keep you well informed

Continental's electronic instrument cluster (shown on pages 16-17) was engineered to be a system with a high degree of human compatibility.

Its special features include a multi-gauge bar graph that at the push of a button will selectively monitor oil pressure, engine temperature or battery voltage/charging. If a critical level is reached in any area, its graphic readout will immediately preempt the selected display.

A message display shows instant or average fuel economy, distance to empty, elapsed distance, average speed and estimated time of arrival. Beneath the message display is a bank of lights that alerts Continental's driver to everything from an open door or lamp outage to low oil level or the need for routine service.

Appointments worthy of an advanced luxury car

Continental's driver's seat has six-way power adjustments as well as a power recliner. Both front seats have adjustable seatbacks, four-way articulated headrests and separate fold-down armrests. Power lumbar (lower back) adjustments and a two-position driver's seat memory feature are available on Signature series.

Proper lumbar support can help reduce back fatigue during long trips. The memory function can "remember" three different settings of the driver's seat. A simple push of a button automatically returns the seat to your preferred position. A six-way power passenger seat is also included with Signature series.

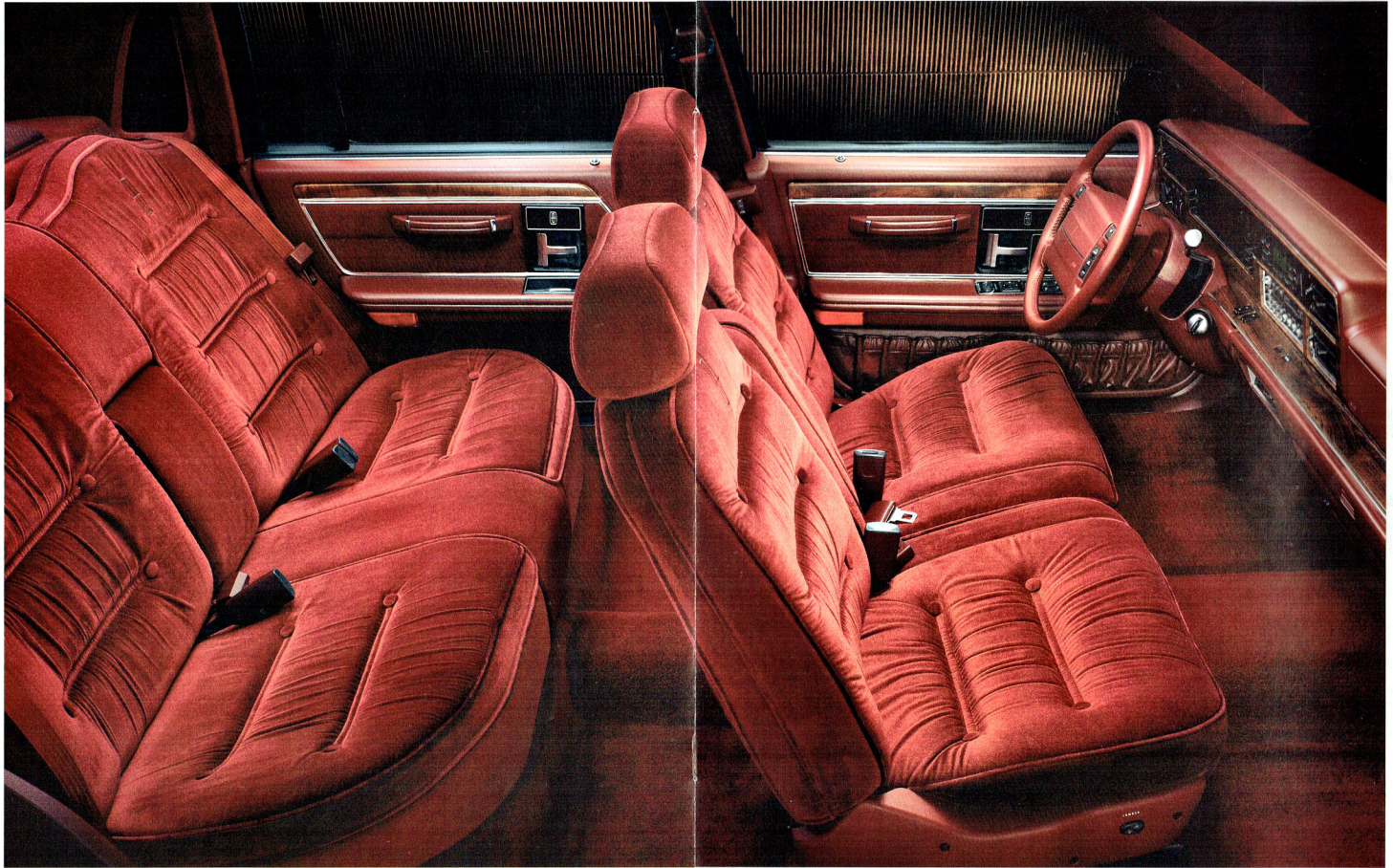
Leather is, of course, standard. Luxurious cloth upholstery is available as a no-cost alternative.

Comfort and convenience at your fingertips

A long list of comfort and convenience features includes power windows and door locks, power adjustable heated outside mirrors, tilt steering wheel, interval wipers and speed control. Continental is so well equipped that there is only a handful of options you may wish to add.

Nowhere is Continental's dedication to six-passenger room and comfort more apparent than in the rear seat. There, your passengers will enjoy more than 914 mm (36 in.) of legroom – minimum – and a generous amount of knee room.

The rear doors are remarkably large for easy entry and exit. And, of course, a fold-down centre armrest, integral headrests and individual reading lights are provided for rear-seat comfort and convenience.



Lincoln Continental Signature Series interior in Current Red cloth upholstery. Some features shown may be optional.

YOU'LL FIND THOSE EXTRA TOUCHES THAT TAKE CONTINENTAL INTO THE REALM OF THE EXTRAORDINARY.

Doors that open to your touch

For added luxury and convenience, Continental is available with the optional keyless entry system. It is operated through five calculator-style buttons located just below the driver's door handle. All passenger doors and the trunk can be opened without using a key. Depressing any of the five buttons will automatically illuminate all of them and trigger the interior lights to facilitate nighttime operation and entry.

For security reasons, the system operates on a secret five-digit code. One is supplied by the factory, but you can program an additional five-digit code for your convenience. It could be birthday or anniversary dates so you never have to worry about forgetting the code. Of course, even with this system, the doors and trunk can still be operated with a key.

A sound system worthy of your home...

Continental's standard AM/FM stereo cassette radio has an 80-watt amplifier and six premium speakers. There are 18 station memory settings—twelve FM and six AM. Pop-out controls retract out of the way after they're set. Seek and scan features work not just with the radio but also with the cassette player. Dynamic and Dolby B® noise reduction systems, auto reverse cassette— even AM stereo reception—are all included.

Continental's automatic climate control system is a good example of how this automobile takes that extra step to deliver more than you expect. So advanced is this digital electronic system, it even compensates automatically for a sunny day. A sunload sensor detects additional heat caused by bright sunlight, then reduces the inside temperature by as much as five degrees below the panel setting to keep driver and passengers comfortable. Tinted glass is, of course, standard.

...One worthy of the concert hall

There is a way to surpass Continental's standard sound system. That's by ordering the optional Ford JBL audio system. It incorporates all the advanced features of the standard sound system plus a 140-watt amplifier and 10 premium speakers. The speakers have been specially designed and located for the acoustics of Continental's interior. The result is a listening experience of concert-hall quality.

The advanced sound engineering of a compact disc player

To that amazing Ford JBL audio system you can also add an optional compact disc player. It's a fully integrated system with automatic music search, scan and dual repeat features.

Designed to provide a clear view of where you're going

Excellent driver visibility was a top priority in Continental's development. Night driving is made easier through the use of standard halogen headlamps. They throw a substantially whiter bright light than conventional lamps. Continental even has standard cornering lamps to help light the way through turns.

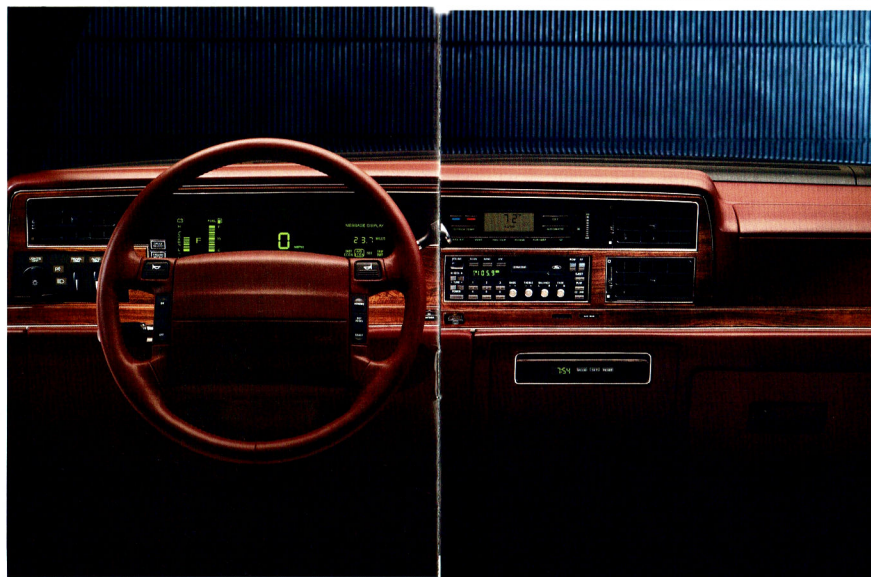
Keeping a clear view of the road is especially important in inclement weather. That's why Continental is equipped with a standard rear defroster, side-window demisters, heated outside mirrors (to remove ice and mist) and interval wipers. The wipers themselves have large 508 mm (20 in.) blades to clear an expanded portion of the windshield. Additionally, you can equip Continental with the optional

Insta-Clear® windshield which can remove 2½ mm (¼ of an inch) of heavy windshield frost at -18°C (0°F) within three minutes.

Advanced computer diagnosis to service you promptly

Continental employs some of the world's most advanced computer technology to control its various systems. To ensure prompt service in the unlikely event of a malfunction, Lincoln dealerships are equipped with sophisticated diagnostic equipment.

A data communications link (DCL) aboard Continental allows shared communication between three major electronic modules—the EEC-IV engine computer, the instrument cluster and the electronic message centre.



CONTINENTAL APPLIES ADVANCED TECHNOLOGY TO OCCUPANT SAFETY.

This system, along with proper safety belt usage, can help provide extra protection against injuries that might occur in certain frontal impacts.

Buckle up – together we can save lives

Continental's driver and front and rear outboard passengers are provided with three-point safety belts, while the centre passengers are provided with lap belts. Tether anchors for child safety seats are also provided in the rear seat.

Protection from the bump and grind of daily driving

An automobile lives in a harsh world. There are a lot of forces out there conspiring to ruin its appearance. Continental has standard bodyside protection mouldings to guard against door dings and scratches, plus an abrasion-resistant coating along the lower body panels to ward off stone chips. And Continental is equipped with 8 km/h (5 mph) bumpers front and rear.

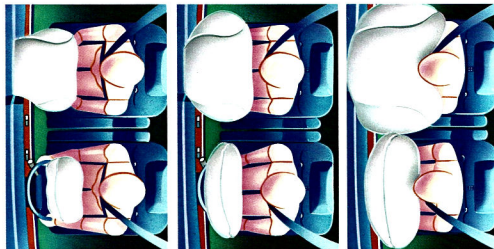
The added confidence of a fully integrated alarm system

Continental offers the added peace of mind that comes with an optional factory-installed, fully integrated alarm system. When someone tries to enter the car without the key or keyless entry code (keyless entry system is a required option with the alarm system), the starter is automatically disabled. The headlights and taillights also flash and the horn blasts for two to four minutes. The starter will remain inoperable until the proper key is worked in the door lock or the proper keyless entry code is punched in.

Continental is an automobile of special details. Those you see and those you don't. Those you use every time you drive and those you use only on occasion. Even those that, hopefully, you'll never have to use.

Added protection is a standard feature you can take comfort in

All 1989 Continentals are equipped with a driver and right front passenger air bag supplemental restraint system.



Shown here is an artist's depiction of a test of Continental's standard Driver and Right Front Passenger Airbag Supplemental Restraint System. This system is not designed to protect the occupant of the centre front seating position, who should wear the lap belt provided.

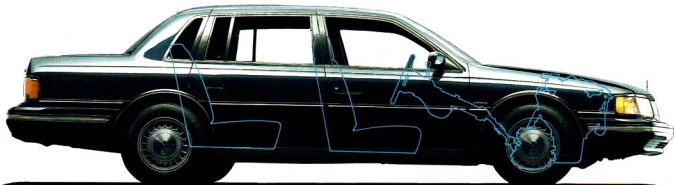
1989 LINCOLN
CONTINENTAL
SPECIFICATIONS

Vehicle type: six-passenger, four-door sedan

DIMENSIONS:	Wheelbase mm (in)	2768 (109.0)
	Track mm (in)	front 1582 (62.3) rear 1551 (61.1)
	Length mm (in)	5209 (205.1)
	Width mm (in)	1846 (72.7)
	Height mm (in)	1412 (55.6)
	Curb weight kg (lb)	1644 (3626)
	Fuel capacity litres (imp. gal.)	70 (15.5)
	Luggage space litres (cu. ft.)	538 (19.0)
	ACCOMMODATIONS:	Headroom mm (in)
Legroom mm (in)		front 1059 (41.7) rear 995 (39.2)
Hiproom mm (in)		front 1422 (56.0) rear 1435 (56.5)
Shoulder room mm (in)		front 1460 (57.5) rear 1460 (57.5)
ENGINE:		Layout
	Type	90-degree V-6 with EEC-IV computer and counter-rotating balance shaft
	Displacement litres (cu. in.)	3.8 (232)
	Bore & stroke mm (in)	96.8x86.0 (3.8x3.4)
	Compression ratio	9.0:1
	Horsepower @ rpm (SAE net)	140 @ 3800
	Torque @ rpm (lb.-ft. SAE net)	215 @ 2200
	Fuel delivery	sequential multi-port electronic fuel injection
	Fuel requirement	87 octane (minimum) unleaded (anti-knock index)
	DRIVETRAIN:	Transaxle type
Gear ratios: I		2.77:1
II		1.54:1
III		1.00:1
IV		0.69:1
axle ratio		3.37:1
CHASSIS:	Body	unitized construction with separate front subframe
	Suspension front	independent MacPherson struts with strut-mounted air springs, 20.5 mm stabilizer bar, tension struts and lower control arms
	rear	independent MacPherson struts with strut-mounted air springs, 18 mm stabilizer bar, tension struts and parallel control arms
	shock absorbers	dual-damping, nitrogen gas-pressurized
	levelling system	microcomputer-controlled front and rear air springs with automatic front-to-rear and side-to-side levelling
	Steering type	speed-sensitive, variable-assist power rack and pinion
	Overall ratio	15.2:1
	Turns, lock to lock	2.52
	Turning circle, curb to curb metres (ft.)	11.5 (38.0)
	Brakes front	256 mm (10.1 in) power-assisted disc, anti-lock
	rear	254 mm (10.0 in) power-assisted disc, anti-lock
	Wheels	15x6.5-inch steel
	Tires	P205/70R15 BSW steel-belted radials

Information based on MVMA specifications.

*15 x 6.5-inch aluminum on Signature Series.



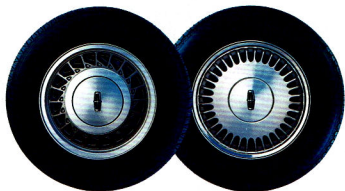
2768 mm (109.0 in)

5209 mm (205.1 in)

1412 mm
(55.6 in)

1989 LINCOLN CONTINENTAL STANDARD AND OPTIONAL FEATURES

	CONTINENTAL	SIGNATURE
FUNCTIONAL FEATURES		
Driver and right front passenger air bag Supplemental Restraint System	S	S
Front-wheel drive	S	S
3.8 litre V-6 engine with balance shaft, sequential multi-port electronic fuel injection and electronic engine control (EEC-IV)	S	S
Four-speed automatic overdrive transmission	S	S
Four-wheel disc Anti-lock Brake System	S	S
Speed-sensitive variable-assist power rack-and-pinion steering	S	S
Computer-controlled adaptive air suspension with load levelling and dual damping ride control	S	S
Four-wheel independent suspension	S	S
Nitrogen gas-pressurized front and rear struts	S	S
Front and rear stabilizer bars	S	S
Gas-cylinder hood-lift assists	S	S
Instrument panel service/interval reminders	S	S
Anti-theft alarm	O	O
Engine block immersion heater	O	O
INTERIOR/CONVENIENCE FEATURES		
Comfort/Convenience Group		
Six-way power front passenger seat and recliner, power decklid pull-down, dual illuminated visor vanity mirrors, rear floor mats and headlamp convenience system (includes automatic headlamp dimmer and autolamp on/off/delay system)	O	S
Electronic automatic climate control system with sunload sensor	S	S
Tilt steering wheel	S	S
50/50 twin comfort lounge seats with leather trim	S	S
Cloth seat trim (no-cost option)	O	O
Unique seat trim	N/A	S
Seatback robe cords	N/A	S
Driver's seat with memory control and power adjustable front-seat lumbar supports	N/A	O
Manual front passenger seatback recliner	S	N/A
Power front passenger seatback recliner	O	S
Dual front-seat folding armrests	S	S
Full-length door armrests	S	S
Electronic AM/FM stereo with cassette and six-speaker Premium Sound	S	S
Ford JBL Audio System with 140-watt amplifier and 10 speakers	O	O
Compact digital disc player (requires Ford JBL Audio System)	O	O
Power antenna	S	S
Remote decklid release	S	S
Tinted glass	S	S
Power windows	S	S
Power door locks	S	S
Dual power and heated outside mirrors	S	S
Interval wipers	S	S



Styled aluminum wheel

Full deluxe wheel cover



Continental's optional keyless entry system, illuminated for ease of operation.

	CONTINENTAL	SIGNATURE		
Side window demisters	S	S		
Rear window defroster	S	S		
Fingertip speed control	S	S		
Rear-seat folding centre armrest	S	S		
Rear-seat heat ducts	S	S		
3-point safety belts for front- and rear-seat outboard occupants	S	S		
Electronic warning chimes	S	S		
Interior lamps (ashtrays, glovebox, courtesy, front and rear reading, door armrests, floorwell, and engine bay and luggage compartment)	S	S		
Electronic instrument cluster with digital speedometer, analog/digital fuel gauge, and multi-function gauge (oil pressure, temperature and battery charge)		S		
Electronic Trip/minder/message center (shows trip distance, average fuel economy, instant fuel economy, average speed, distance to empty and systems check)	S	S		
Digital clock	S	S		
Leather-wrapped steering wheel	O	S		
24-oz. floor carpet	S	S		
Front floor mats	S	S		
Seatback map pockets	S	S		
Front/side visor	S	S		
Centre visor (extended coverage)	S	S		
Front overhead console with dual reading lights	S	S		
Overhead console group (digital compass and automatic dimming rearview mirror) (N/A with power moonroof)	O	O		
538 litres (19 cu. ft.) carpeted trunk with low lifter design, luggage compartment lamp and storage compartment	S	S		
Automatic parking brake release	S	S		
Insta-Clear® windshield	O	O		
Power moonroof (N/A with overhead console)	O	O		
EXTERIOR FEATURES				
Aerodynamically designed body with flush halogen headlamps, flush glass, aircraft-style doors and concealed wipers	S	S		
Cornering lamps	S	S		
Bodyside protection moulding with bright insert	S	S		
Bright rocker panel moulding	S	S		
Exterior abrasion coating	S	S		
Signature Series script on rear quarter window	N/A	S		
Bodyside accent stripes	N/A	S		
Keyless illuminated entry system	O	S		
TIRES/WHEELS				
P205/70R15 steel-belted black sidewall tires	S	S		
Styled aluminum wheels	O	S		
Full deluxe wheel covers	S	N/A		
INTERIOR COLOURS				
Titanium	Shadow Blue	Currant Red	Cinnabar	Sandalwood
EXTERIOR COLOURS				
Bright Currant Red Clearcoat Metallic	Silver Frost Clearcoat Metallic	Midnight Black Clearcoat	Arctic White	
Light Crystal Blue Clearcoat Metallic	Cinnabar Clearcoat Metallic	Midnight Red Clearcoat Metallic		
Medium Driftwood Clearcoat Metallic	Sandstone Clearcoat Metallic	Twilight Blue Clearcoat Metallic		
Dark Titanium Clearcoat Metallic	Rose Quartz Clearcoat Metallic	Pastel Adobe Clearcoat Metallic		
S Standard features O Optional features N/A Not available				



Our confirmation of quality.

The Lincoln Card provides you with one of the most comprehensive owner protection programs provided by any luxury vehicle manufacturer in North America or abroad.

A three year/160,000 kilometre (whichever comes first) program that covers all scheduled maintenance services as listed in the owner guide, replacement of items necessitated by wear and all repairs that may be necessary due to defects in materials. The Lincoln Card also includes towing and transportation assistance. Damage caused by accidents and abuse, or fluids required between scheduled maintenance intervals, tires, and vehicles in daily rental, are not included in the program.

Your Lincoln dealer would be more than pleased to review with you all of the information regarding this preferential plan, to make your Lincoln driving years as pleasurable as possible. Under the program, the Lincoln Card is also transferable at no charge to those subsequent purchasers who own the vehicle within the program period.

After the expiration of your Lincoln Card coverage, the Ford of Canada 6 year/100,000 km major component warranty will come into effect. See your Lincoln dealer for complete details of this limited warranty.



Genuine Ford and Motorcraft original equipment replacement parts are engineered and manufactured to Ford's high specifications. They're your best assurance of quality and long-term satisfaction because these replacement parts meet the same high standards as those installed in production.

DURAGUARD SYSTEM

All Lincoln cars are protected with the DURAGUARD System, which includes 7 processes built in at the factory as standard equipment, to provide corrosion protection as follows: • precoated steel on doors, quarter panels, hoods, fenders and other selected areas; • galvanized steel on rocker panels, selected cowl tops and underbody parts; • vinyl sealer on the underside of rear wheelhouses; • phosphate coating on the entire car body after a super cleaning process; • an electrocoat process to apply corrosion resistant primer paint, also on the entire body; • aluminized wax sprayed into the hard-to-reach lower body areas and the inside surfaces of doors; • protective vinyl coating behind the wheel openings and along the lower bodyside area.

CORROSION WARRANTY

The DURAGUARD System is backed by a no-extra charge 6 year/160,000 km manufacturer's warranty against corrosion perforation. This warranty, transferable to succeeding owners, covers the cost of both labour and materials for repair of perforation of sheet metal and all other components except exhaust system, caused by corrosion. See your dealer for details of this limited warranty.



Ford Credit Canada, Limited is interested in helping to fill the transportation needs of every qualified Lincoln buyer. A participating dealer can arrange financing terms or a Red Carpet Lease[®] tailored to your circumstances. Ford Credit Canada, Limited has offices conveniently located throughout Canada.

This brochure has been prepared only as a general guide to the customer and every effort has been made to ensure that all information is correct at the time of printing. However, some errors may have been included and some of the information or specifications may have been changed since the time of printing. Your dealer will have full details on any changes and/or corrections and you should ask him to bring you up to date at the time of your purchase. Ford Motor Company of Canada, Limited reserves the right to change prices, colours, materials, specifications and models and to discontinue models without notice and without incurring obligations of any kind. Some features described or shown may be optional at extra cost. Some options are required in combination with other options.