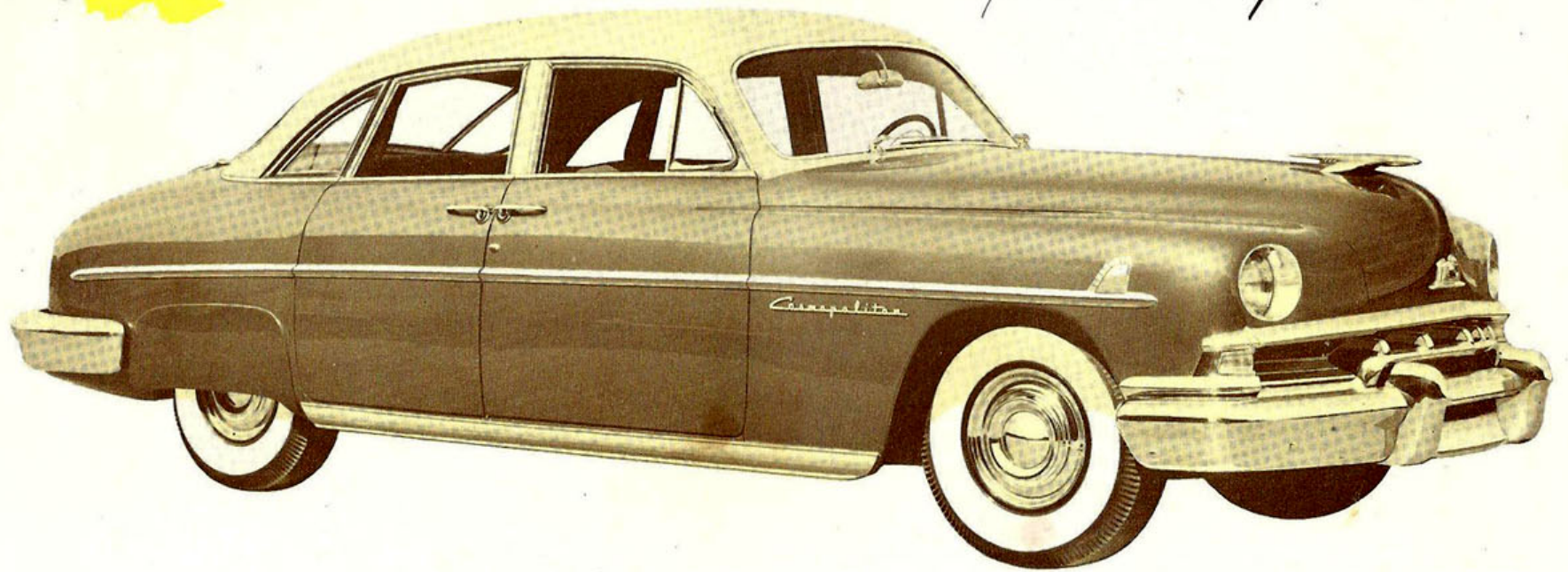
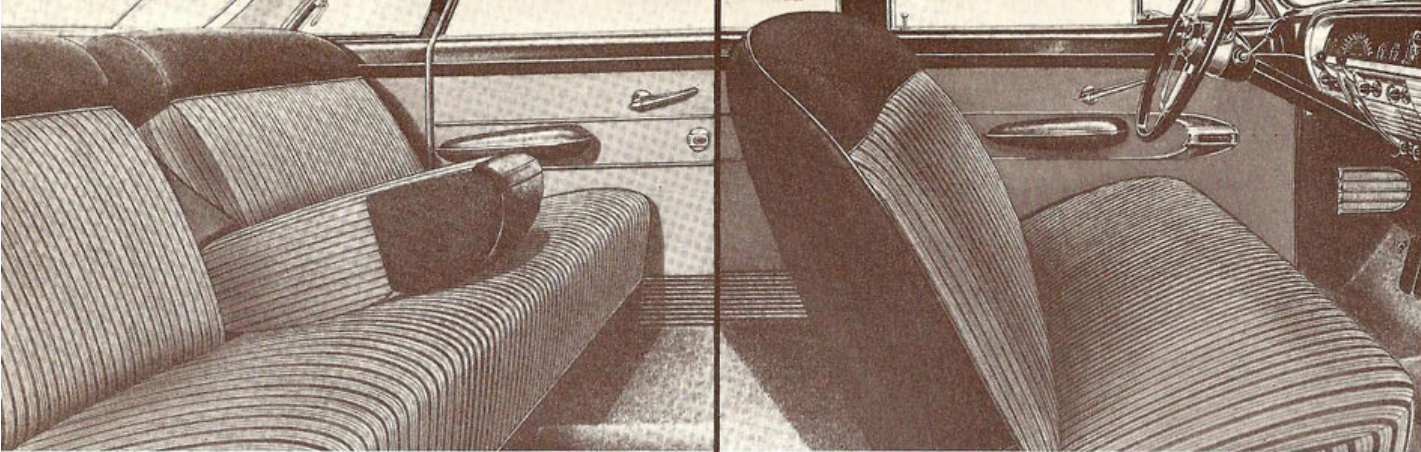


THE
*1951
Lincoln
Cosmopolitan*



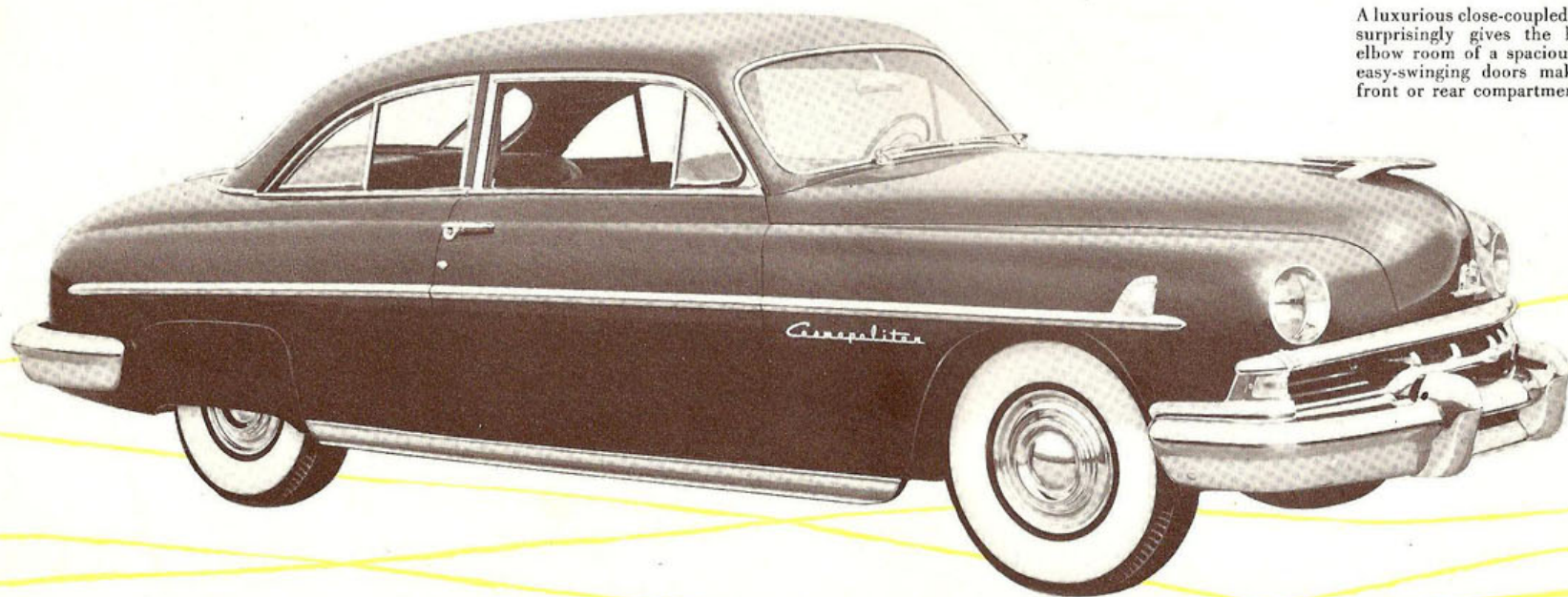
Nothing could be finer



In the 1951 Lincoln Cosmopolitan you relax against true shoulder-height seat backs, heavily bolstered with the finest of padding covered by soft, highly polished leathers. Fabrics are richly color-harmonized and all convenience features are close at hand—including ash trays, cigar lighters, and hydraulic controls which govern the raising and lowering of window glass in the Cosmopolitan.

The comforts of the Lincoln Cosmopolitan front seat begin with the touch of a hydraulic control switch which moves the wide, deep cushion forward or back. And from a panel of similar switches mounted on the driver's door all or any of the car's main windows may also be raised or lowered automatically. Instruments are handsomely, separately mounted for instant visibility and ready reading.

interiors ●



six-passenger coupe

A luxurious close-coupled body style that surprisingly gives the head, leg, and elbow room of a spacious sedan. Wide, easy-swinging doors make entrance to front or rear compartments convenient.

America's most distinctive motor car

PICTURES can only approximate the distinctive elegance of the 1951 Lincoln Cosmopolitan. They simply cannot tell the detailed story of this fine car's sleek, streamline beauty . . . its luxurious interior spaciousness . . . or the superlative performance it delivers so unceasingly.

For here is a car that has been engineered and styled to set a new concept for fine-car motoring at its best.

That's why you owe it to yourself to drive this great automobile . . . to test to your own satisfaction its performance in town or on the open highway. Only then will you understand exactly what genuine motoring comfort means . . . "living-room spaciousness" to stretch out in . . . restful, relaxing quietness that comes only with Fiberglas soundproofing . . . the luxurious fit and feel of seats that are wide . . . and deep . . . high-cushioned . . . and so soft.

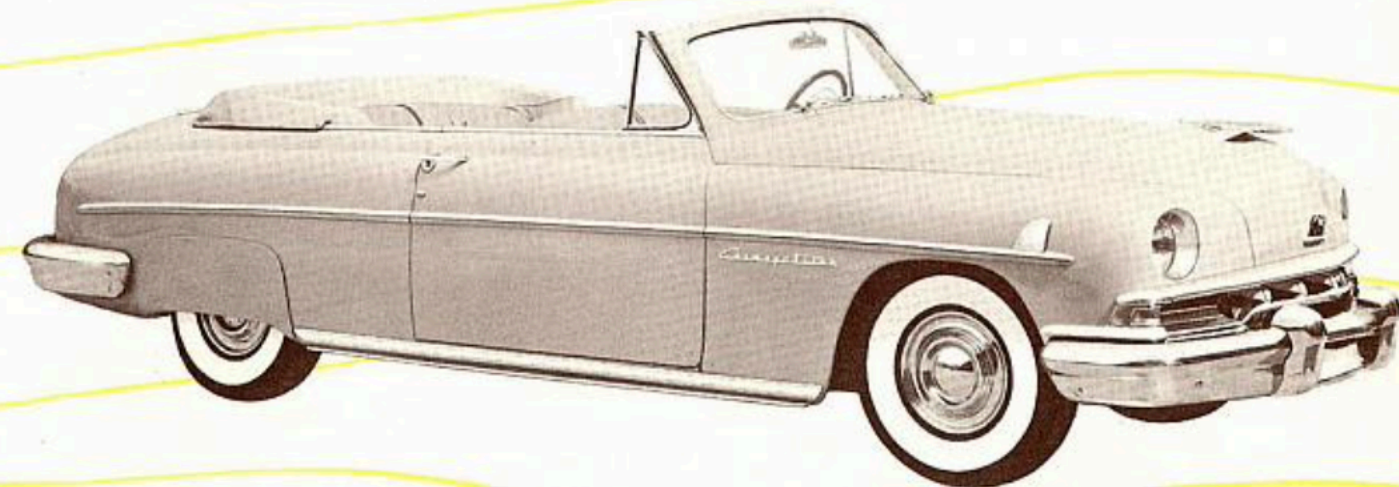
Yes, only when you head the Lincoln Cosmopolitan toward the open highway, or thread this easy-handling motor car into heaviest traffic, will you really be able to judge the benefits of its "spring-cradled" ride . . . its panorama visibility . . . and the effortless, spirited, whisper-smooth performance of its 154-horsepower "InVincible Eight" engine.

Ownership of a car like this, you'll discover, is an instant satisfaction that will only grow greater through the months and miles you enjoy it . . . for this is the Lincoln Cosmopolitan . . . and truly, "nothing could be finer"!



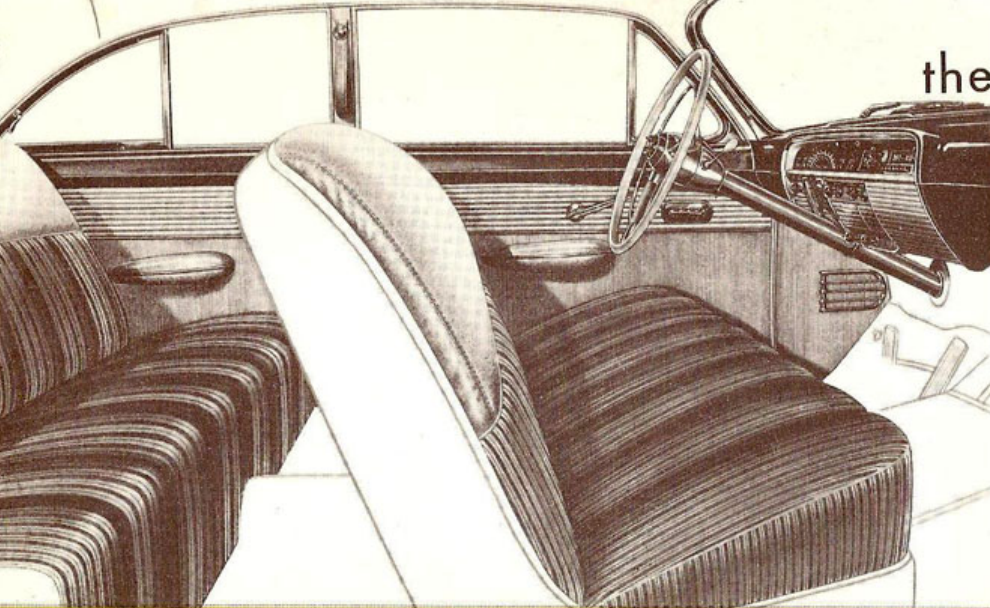
sport sedan

Spacious, yet easy to drive and handle, is this big Six-passenger, Four-door Sedan, truly impressive, distinctively different. Trim lines, "Salon-Styled" interiors, and beautiful new body colors—in both solid and two-tone—give it a true elegance.



six-passenger convertible

The Lincoln Cosmopolitan Six-passenger Convertible is a magnificent car for those who like to keep step with the seasons. Magnificent in its interior spaciousness, this low-slung model is proof that convertibles need not be cramped and crowded. The top folds quickly, automatically, at the touch of a push button . . . closes just as easily, speedily, to provide a sure, snug, weatherproof protection.



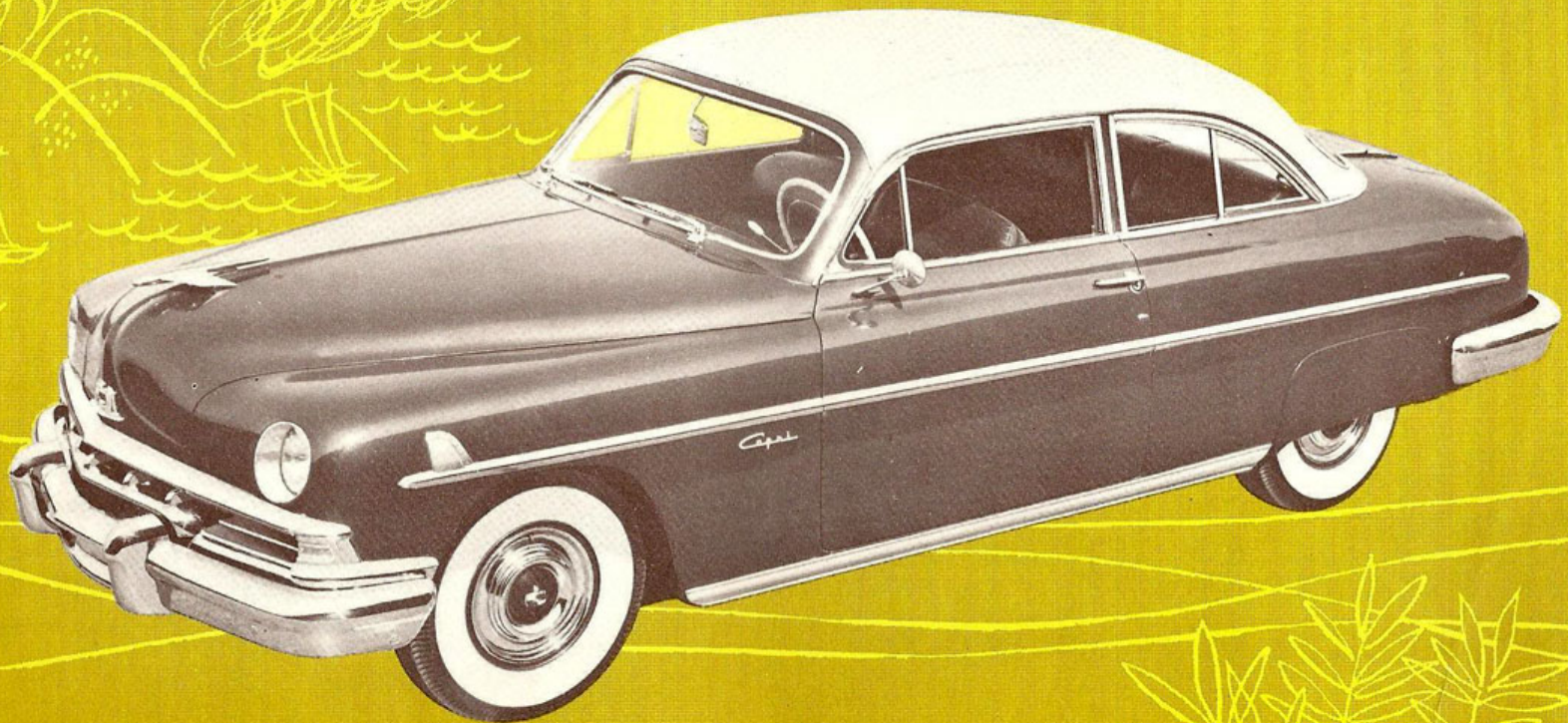
the

Lincoln Cosmopolitan Capri

Lincoln presents in this spacious coupe for six passengers the ultimate in American fine-car styling. Here is efficiency of line to please the engineer. Here is surprising contrast of surfaces—the sleekness of polished metal with the texture of the vinyl-leather-covered, solid steel top—to delight the contemporary designer.

Throughout the car you'll find many refreshing evidences of new concepts in luxury car design . . . new inside roof trim treatment . . . convenient placement of ash trays and electric lighters . . . individual hydraulic window controls and armrests—both side and center.

Yes, the Lincoln Cosmopolitan Capri represents a new note in American motor car design . . . new distinction in fine-car decor . . . fitting evidence, indeed, that with Lincoln, now as always, you can be certain that "nothing could be finer."

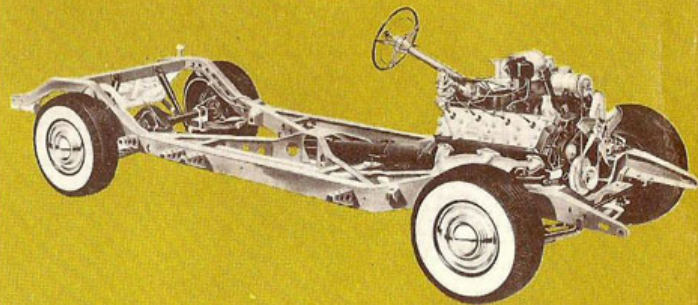


Lincoln Cosmopolitan

highlights

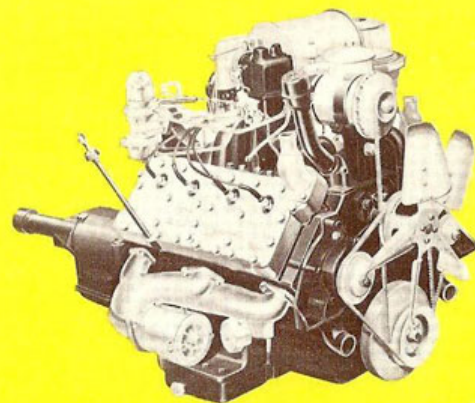
FOUNDATION for every Lincoln Cosmopolitan feature is its sturdy, comfort-secure chassis. Not only does it set the scale for the Cosmopolitan's perfect body proportioning, but it also provides solid roadability, strength without needless weight, and rigidity to offset severe road shock. Acts as a filtering panel against road vibration, too. You ride smoothly, silently, comfortably, and *securely* on this perfectly balanced bridge of steel.

Chassis Specifications: **DIMENSIONS:** Wheelbase, 125 in.; over-all length, 222.5 in.; width, 78.2 in.; height (loaded), 62.6 in. **FRAMES:** Rigid, heavy steel, cold-riveted and welded. X-member construction with K reinforcement and cross-members. Convertible frames reinforced for extra body support. **BODIES:** Steel, heavily reinforced, with welded floor. Insulated with Fiberglas and other suitable materials against noise and heat. **BRAKES:** "Duo-servo" hydraulic brakes for quick, straight-line stops. Self-energizing action decreases pedal pressure. Parking brake operates on rear wheels.



POWER for the 1951 Lincoln Cosmopolitan is delivered eagerly, responsively, smoothly, by the precision-built, 154-hp, 8-cylinder, V-type Lincoln engine. Ease it into traffic, hurry it over the highway, challenge it with the highest hills. Careful design and quality control of both materials and manufacturing assure economical delivery of full-rated power and dependable, long-lived performance. Here is a power plant you can count on in every traffic situation . . . because it's Lincoln—the premium product of the world's largest producer of 8-cylinder, V-type engines.

Engine Specifications: **RATING:** The 1951 Lincoln 90 degree, V-type, L-head, 8-cylinder engine develops 154 horsepower at 3600 rpm. Alloy-steel exhaust valve inserts, and hydraulic-type valve lifters. **LUBRICATION:** Gear-type oil pump. Force feed to all main, connecting rod, and camshaft bearings. Heavy-duty oil filter. Oil capacity, 6 quarts. **COOLING SYSTEM:** Full-flow system circulates all coolant completely around all cylinders and back through head of each side of engine for uniform cooling and longer engine life. Coolant capacity, 34.5 quarts. Additional capacity with heater, 1.5 quarts. **FUEL SYSTEM:** Fuel tank capacity: 21½ gal. Automatic choke. Automatic idling control. Improved concentric type, dual-downdraft carburetor checks vapor lock, increases fuel economy. **ELECTRICAL SYSTEM:** Battery, 17-plate, 120 ampere-hour. High capacity generator (40 amperes at 7.1 volts) with automatic current and voltage control to meet all needs.



COMFORT in the 1951 Lincoln Cosmopolitan is no catchword; it's as carefully engineered into this great motor car as the performance of its "InVincible Eight" engine. The Lincoln heating* and ventilating system is so designed that you get a complete change of air in seconds. Lincoln also provides Fiberglas insulation against both noise and heat . . . wide, deep, high-shouldered seats . . . and hydraulically operated windows.

Comfort Specifications: **WHEEL SUSPENSION:** Independent front wheel suspension with coil springs enclosing telescopic shock absorbers. Longitudinal semi-elliptic leaf type rear springs with shock absorbers "sea-leg" mounted to cushion both shocks and sidesway. **HYDRA-MATIC TRANSMISSION:** Four automatic speeds forward, one reverse. No gears to shift, no clutch to push. Drive selector mounted on steering column. Rear axle ratio: 3.31 to 1. **TIRES AND WHEELS:** 8.20 x 15 super-balloon tires mounted on pressed-steel wheels with extra wide rims.

All Lincoln cars equipped with improved HYDRA-MATIC transmission at extra cost

*Optional equipment and white side-wall tires available at extra cost.

