



LINCOLN

CLAIM YOUR EMPOWERMENT ZONE.





FIRST IMPRESSIONS ARE LASTING. MAKE YOURS COUNT. THEY WILL, EVERY TIME, WITH THE MEMORABLE LINCOLN NAVIGATOR. A GLISTENING LINCOLN STAR CENTERS ITS INSPIRING CHROME GRILLE. ELEGANT CHROME ACCENTS GLEAM FROM FRONT TO REAR. STRONG. REFINED. AND DISTINCTLY AMERICAN. NAVIGATOR.



PURE POWER AND POISE THAT NEVER TIRES.
IN NAVIGATOR, EACH OUTING IS A COMMAND PERFORMANCE.
FILLED WITH RESPONSIVE POWER, ELEGANT LUXURY AND
A FEW '09 SURPRISES. LIKE NEW RAIN-SENSING WIPERS.
A NEW FRONT SENSING SYSTEM. AND MORE. ENCORE, ANYONE?



MAXIMIZE YOUR POSSIBILITIES. An additional 15.8" of length behind the PowerFold™ 3rd-row seat gives you 24.5 more cu. ft. of cargo space in Lincoln Navigator L. Outside, power-deployable running boards extend automatically whenever you open a door. Inside, you'll be treated to all the chrome, satin-nickel, leather and real wood trim of Navigator. Plus a Cargo Management System to help you organize all that space. Go large with Navigator L.



RELAXATION ACHIEVED ON A GRAND SCALE. UP TO EIGHT PEOPLE CAN REACH THAT STATE IN NAVIGATOR. HEATED AND COOLED SEATS CODDLE THOSE IN FRONT. HEATED REAR SEATS WARM THOSE IN THE 2ND ROW. EVEN THOSE IN THE 3RD ROW ARE TREATED TO LEG ROOM THAT'S BEST IN CLASS.¹ BREATHE DEEP. EXHALE.

¹Full-size Luxury SUV class.

Balancing the firmness you need for longer trips with an appropriate level of cushioning comfort, the premium leather-trimmed seats in Navigator are available in hues of Camel, Charcoal Black or Stone. For the driver and front passenger, heated and cooled seats provide three levels of warm and cool luxury, as well as 10-way power controls to help them find their perfect positions. Power-adjustable pedals and a leather- and wood-trimmed, power-tilt steering wheel, both with memory feature, get the driver ready for action. In the 2nd row, outboard heated seats keep the chill from settling in.

To up the ante even further, choose the available Monochrome Limited Edition Package, which includes a monochromatic exterior in one of four colors, a Limited Edition badge, Black carpeting and floor mats, Camel or Stone leather-trimmed seats with Black leather inserts and piping, Ebony wood trim and an embroidered Lincoln Star on all head restraints.

NAVIGATOR SEATING. Standard 7-passenger seating (shown) gives 2nd-row passengers dual reclining leather-trimmed, heated seats and a large center floor console. For pass-through access to the 3rd row, a 2nd-row option without the center console is available. An available 8-passenger configuration features a 2nd-row 40/20/40 split-folding bench seat. And with a best-in-class 37.7" of leg room, adult passengers ride in comfort in Navigator's 3rd row. To reveal 103.3 cu. ft. of cargo space²; just fold the 2nd- and 3rd-row seats down.

NAVIGATOR L CAPABILITY. An extra 15.8" in length behind the PowerFold™ 3rd-row seat in Navigator L provides an additional 24.5 cu. ft. of cargo space² to fill. Even if all the seats are taken, you can still bring home that specialty-store find. To create a flat loadfloor with an amazing 128.2 cu. ft. of space²; just fold the 2nd- and 3rd-row seats down.

Navigator L in Camel leather trim with Figured Maple wood accents.



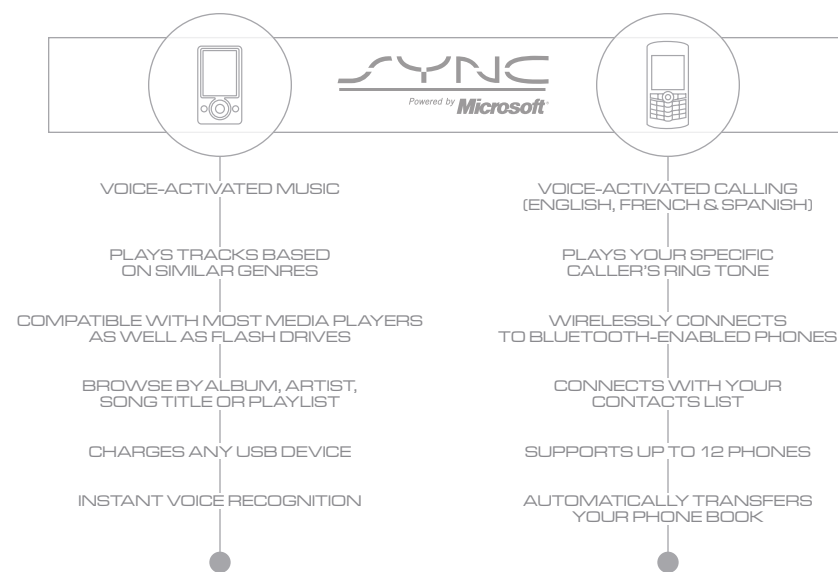
COMFORT AND CAPABILITY THAT ARE LARGER THAN LIFE.
MAXIMUM CAPACITY. ABSOLUTELY NO COMPROMISES.
WELCOME TO NAVIGATOR L. WITH ROOM FOR UP TO EIGHT,
AS WELL AS ALL THEIR GEAR. AND ALL THE LUXURY OF NAVIGATOR.
MAKE LIVING LARGE EFFORTLESS. EXPERIENCE THE POWER OF L.

²Cargo and load capacity limited by weight and weight distribution.



YOU ARE HERE. WHERE EVERYTHING IS POSSIBLE.
THIS IS THE PLACE. LEATHER-TRIMMED DRIVER SEAT. LINCOLN NAVIGATOR.
FIGURED MAPLE OR EBONY WOOD TRIMS EACH DOOR, THE STEERING WHEEL
AND THE CENTER CONSOLE, WHILE SATIN-NICKEL AND CHROME ACCENTS
CREATE AN ENGAGING ENVIRONMENT, MILE AFTER CAPTIVATING MILE.

INTRODUCING YOUR MOBILE DOCKING STATION.
FOR BLUETOOTH®-ENABLED MOBILE PHONES. DIGITAL MEDIA PLAYERS.
PORTABLE FLASH DRIVES. AND UP TO EIGHT PASSENGERS, OF COURSE.
NAVIGATOR IS YOUR LEATHER-TRIMMED HUB FOR A DIGITAL LIFE.
ONE WITH HEATED AND COOLED FRONT SEATS. AND 310 HORSEPOWER.



LINCOLN SYNC®¹ Once your Bluetooth-enabled mobile phone is paired, and your MP3 player or flash drive is connected to SYNC's USB port, you'll have seamless integration of your in-vehicle communications and entertainment system. Tell SYNC to call Vanessa. Ask it to play a specific artist or tune. No problem. You talk. SYNC listens.™ All without taking your hands off the steering wheel. Developed in concert with Microsoft,® be sure to visit SyncMyRide.com for the latest information about exciting new features.

THX® II CERTIFIED 5.1 SURROUND AUDIO SYSTEM. Included as part of Navigator's available new Navigation system, this 600-watt audio wonder features a sophisticated processor that provides spectral balance, wide dynamic range, and superior acoustic performance. Rich, deep bass emanates from an 8" rear subwoofer, while acoustical depth pulses from the patented THX Configurable Speaker Array™ (CSA). An MP3-compatible single-CD/DVD/Jukebox player² handles your prerecorded or ripped CDs, while an audio input jack broadcasts your MP3 player through 14 strategically placed speakers. True surround sound meets the open road. Enjoy it from any seat in the 2009 Lincoln Navigator.

VOICE-ACTIVATED NAVIGATION WITH SIRIUS TRAVEL LINK.™³ New for 2009, the available voice-activated Navigation System (shown at right) responds to your simple voice commands and, thanks to new SIRIUS Travel Link, it can even detect a traffic incident ahead and offer alternate routes. Travel Link also serves up everything from lowest fuel prices, real-time traffic, current and forecasted weather, sports scores and schedules, to local movie listings and showtimes. And with nearly 10 gigabytes of hard drive storage, the Navigation System allows you to store photos for your "Home" page and rip entire CDs or just your favorite tracks (up to 2400 songs). This multifunctional system even lets you watch DVDs in full THX II Certified 5.1 Surround sound when Navigator is in "Park."

¹Driving while distracted can result in loss of vehicle control. Only use mobile phones and other devices, even with voice commands, when it is safe to do so. Microsoft is a registered trademark of Microsoft Corporation. The Bluetooth word mark is a registered trademark owned by the Bluetooth SIG, Inc. ²A THX II Certified Audio System with 6-disc in-dash CD changer is standard on Navigator models without the Navigation System. ³Real-time traffic monitoring available in select markets. Some features are unavailable while driving. Service not available in Alaska or Hawaii. See your Lincoln Mercury Dealer or contact SIRIUS at 1-888-539-7474 for more information.



Over 130 channels of crystal clear, digital-quality sound are provided by SIRIUS® Satellite Radio.³ A complimentary 6-month subscription to the SIRIUS service is yours as well.



CAPABLE OF CARRYING YOU ON YOUR UPWARD CLIMB. WITH NAVIGATOR AND NAVIGATOR L, YOU'VE TRULY GOT THE POWER. POWER-FOLDING MIRRORS. POWER LIFTGATE. POWER-ADJUSTABLE PEDALS. POWERFOLD™ 3RD-ROW SEAT. POWER-DEPLOYABLE RUNNING BOARDS.¹ THANKS TO THIS ABUNDANT USE OF POWER FEATURES, ACHIEVING YOUR GOALS IS AS EFFORTLESS AS SETTING THEM.



It all starts the moment you get behind the leather- and wood-trimmed steering wheel. A power tilt feature helps you easily position the wheel to your liking, while a convenient memory setting makes it easy to recall each time you enter. A power liftgate makes loading and unloading a breeze, while Navigator's power-folding, heated sideview mirrors can fold in and out to provide clearance in tight spaces. Built-in turn-signal indicators announce your lane-change intentions, while security approach lamps underneath cast a warm glow as you return to your vehicle in the dark.

On Navigator L, streamlined power-deployable running boards extend automatically whenever you open a door. After you're comfortably

seated and the doors are shut, they retract perfectly into the lower bodyside. To load longer items, a press of the buttons in Navigator's ample cargo area folds down each side of the 60/40 split PowerFold 3rd-row seat, creating a flat loadfloor with 54.4 cu. ft. of space to fill (86.3 cu. ft. in Navigator L).

A Rear View Camera helps you see what's behind you when backing up. Just check the rearview mirror for an accurate perspective. And new this year in the available Elite Package, the camera image is displayed on the 6.5" screen of the voice-activated Navigation System that's included in the package. Finally, power-adjustable brake and accelerator pedals help you find your optimum driving position.

¹Standard on Navigator L. Available on Navigator.



A POWERFUL CHOICE. With 310 hp¹ and 365 lb.-ft. of torque leading the way, Lincoln Navigator's authoritative 5.4L 3-valve V-8 FFV engine is a powerful ally. The fact that it achieves these numbers on regular unleaded (87 octane) fuel is all the more impressive. This year, a new Flex Fuel capability makes this powerful V-8 even more significant by giving you a choice: E85 or gasoline. The 2009 Navigator can operate on E85 (85% ethanol/15% gasoline), gasoline, or any combination of the two. As you drive, an advanced Powertrain Control Module determines the ethanol/gas mixture and automatically adjusts for optimum performance. So whatever your fuel of choice,

Navigator's tenacious V-8 empowers you to pass without hesitation and tow heavy loads with ease. In fact, properly equipped Navigator 4x2 models allow you to tow up to 9000 lbs.;² 4x4 models, up to 8700 lbs.² A new Tow/Haul Mode in Navigator's 6-speed automatic transmission automatically adjusts transmission response to improve all-around performance while towing. When going downhill, Tow/Haul Mode helps keep the vehicle from gaining too much speed. When going uphill, it helps the engine stay in its power band by holding a transmission gear for a longer time. Adapting to changing needs is just another facet of Navigator's power.

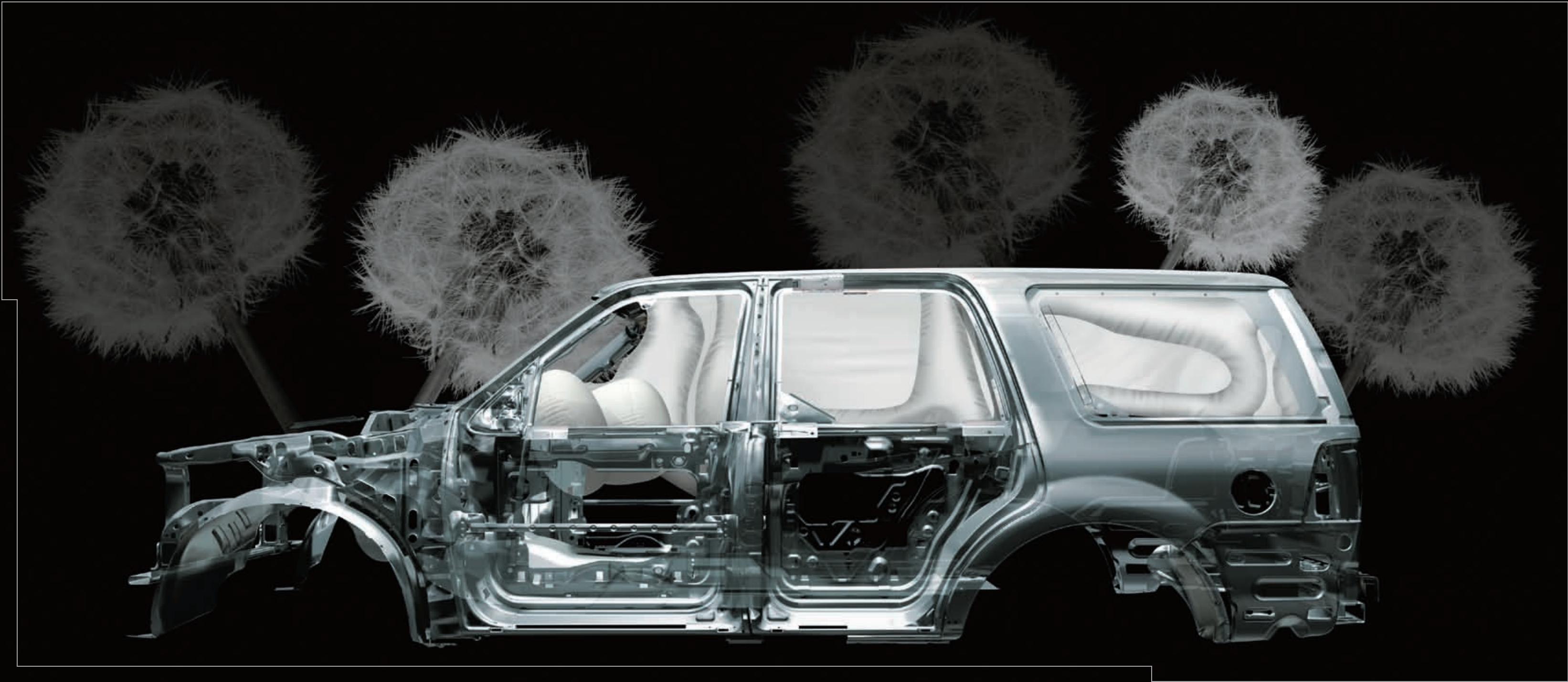
¹320 hp with E85 fuel. ²Towing capacity for Navigator L: 4x2 – 8700 lbs.; 4x4 – 8500 lbs.

Lincoln Navigator Monochrome Appearance Package in Black with available equipment.



TIME FOR REFLECTION. With all the family schedules to keep and deadlines to meet, there's no better place to spend your "quiet time" than in Navigator's hushed interior. Its acoustic-laminate windshield; thick side-window glass; layers of sound-deadening material in the roof headliner, instrument panel and within the door panels; advanced door seals; and aerodynamically "tuned" sideview mirrors make Navigator a sanctuary of quiet quality. Class-exclusive use of Quiet Steel® technology helps eliminate the transfer of engine compartment sound and resonance into the passenger cabin, so that the sounds you hear are the ones you want. Like your favorite musical score, courtesy of the THX® II Certified Audio System with 600 watts and 14 speakers, or the voices of all your passengers – even those in the 3rd row.

ENGINEERED FOR SAFETY, ONE ADVANCED SENSOR AT A TIME. MICROTECHNOLOGY SURROUNDS YOU IN LINCOLN NAVIGATOR. SOPHISTICATED SENSORS CAN DIRECT SOME OR ALL OF THE AIRBAGS TO DEPLOY IN A COLLISION, OR SENSE A ROLLOVER. EVEN ON A SMALL SCALE, THE BIG PICTURE IS KEEPING YOU SAFE.



Six standard airbags offer enhanced protection in Navigator. Driver and front-passenger coverage includes dual-stage front airbags and front-seat side airbags, while all outboard passengers benefit from the side-curtain airbags and rollover sensor in the Safety Canopy® System. In certain types of side-impact or rollover events, side-curtain airbags deploy from the headliner to cover all three rows. Additional peace of mind comes from a new SOS Post-Crash Alert System, designed to signal for help after an accident where an airbag has deployed or safety belt pretensioner has activated. Sensors direct the horn to sound and lights to flash so that

you and your passengers may be easily located.¹ Navigator's standard AdvanceTrac® with class-exclusive RSC® (Roll Stability Control™) is the industry's only electronic stability control system with two gyroscopic sensors, one of which is a unique vehicle-roll motion sensor that directly measures the roll rate 100 times every second. Working in conjunction with the Anti-lock Brake System (ABS), traction control and yaw control, AdvanceTrac with RSC uses the roll rate and other information to determine when and how the system will apply individual brakes and modify engine power to help keep all four wheels firmly planted.

¹SOS hardware may become damaged or the battery may lose power in a crash, which could prevent operation. Not all crashes will activate an airbag or safety belt pretensioner. Remember that even advanced technology cannot overcome the laws of physics. It's always possible to lose control of a vehicle due to inappropriate driver input for the conditions.



FORD CREDIT Get the ride you want. Whether you plan to lease or finance, you'll find the choices that are right for you at Ford Credit. Ask your Lincoln Mercury Dealer for details or check us out at fordcredit.com.

FORD MOTOR COMPANY INSURANCE SERVICES Get Ford Motor Company quality in your auto insurance. Our program offers industry-leading benefits and competitive rates. Call 1.877.367.3847, or visit us at fordvip.com for a no-obligation quote. Insurance offered by American Road Services Company (in CA, American Road Insurance Agency), a licensed agency and subsidiary of Ford Motor Company.

FORD EXTENDED SERVICE PLAN For a purchase or lease, the Ford Extended Service Plan (ESP) gives you "Peace-of-Mind" protection designed to cover key vehicle components and protect you from the cost of unexpected repairs. Ask your dealer for an ESP, the only service contract backed exclusively by Ford and honored at all Ford Lincoln Mercury dealerships.

custom accessories Genuine Lincoln Accessories will be warranted for whichever provides you the greatest benefit: 12 months or 12,000 miles (whichever occurs first), or the remainder of your Bumper-to-Bumper 4-year/50,000-mile New Vehicle Limited Warranty. Contact your local Lincoln Mercury Dealer for details and a copy of the limited warranty. Lincoln Licensed Accessories (LLA) are warranted by the accessory manufacturer's warranty. Contact your Lincoln Mercury Dealer for details regarding the manufacturer's limited warranty and/or a copy of the LLA product limited warranty offered by the accessory manufacturer.

Complimentary maintenance makes driving your Lincoln even more of a pleasure. Simply bring it to an authorized Lincoln service center, and scheduled maintenance will be performed at no charge throughout your first year of ownership or 12,000 miles, whichever comes first. Additional peace of mind comes from a 4-year/50,000-mile bumper-to-bumper New Vehicle Limited Warranty that covers repair, replacement or adjustment of parts at no additional cost, as well as a 6-year/70,000-mile powertrain limited warranty which features no deductible and is fully transferable. And Roadside Assistance for 6 years or 70,000 miles provides the security of knowing that help may be only a phone call away should you run out of fuel, lock yourself out of the vehicle or need towing. Your Lincoln Mercury Dealer will provide complete details on all of these privileges.

THX, the THX logo and THX Configurable Speaker Array are trademarks of THX Ltd., which may be registered in some jurisdictions. All rights reserved.

"SIRIUS," the SIRIUS dog, "SIRIUS Travel Link" and related marks are trademarks of SIRIUS Satellite Radio Inc.

Garmin is a registered trademark of Garmin Ltd.

Comparisons based on 2008 competitive models (Full-size Luxury SUV class), publicly available information and Ford certification data at time of printing. Some features discussed may be optional. Vehicles shown may contain optional equipment. Features shown may be offered only in combination with other options or subject to additional ordering requirements or limitations. Dimensions shown may vary due to optional features and/or production variability. Following publication of the catalog, certain changes in standard equipment, options and the like, or product delays may have occurred which would not be included in these pages. Your Lincoln Mercury Dealer is the best source of up-to-date information. Lincoln Mercury reserves the right to change product specifications at any time without incurring obligations.

NAVIGATOR STANDARD LUXURY FEATURES

ENGINE

5.4L SOHC 3-valve V-8 FFV
310 hp @ 5100 rpm/365 lb.-ft. of torque @ 3600 rpm
28-gallon fuel tank

DRIVETRAIN

6-speed automatic transmission with Tow/Haul Mode

WHEELS

18" 7-spoke aluminum wheels with 17" steel spare

BRAKES

Power 4-wheel disc brakes with Anti-lock Brake System (ABS)

SUSPENSION/STEERING

Independent front and rear suspension
Front and rear stabilizer bars
Variable-assist power steering

EXTERIOR

Projector-style High-Intensity Discharge (HID) headlamps with autolamp feature
Fog lamps
Bodyside cladding with chrome accents
Power-folding, heated sideview mirrors with chrome caps, security approach lamps, integrated turn signals and memory
Tow hooks integrated into front fascia
Privacy glass
Power flip-out rear quarter windows
Fixed running boards
Forward Sensing System

Luggage rack with chrome accents and Black crossbars
Rain-sensing, speed-sensitive intermittent windshield wipers
2-speed intermittent rear-window wiper with washer
Power liftgate

Rear View Camera with image displayed in auto-dimming rearview mirror

Reverse Sensing System

Class III/IV Standard-Duty Trailer Tow Package with frame-mounted trailer hitch receiver integrated into rear fascia and 4-pin wiring harness

	Navigator/L
Length	208.4"/223.3"
Wheelbase	119.0"/131.0"
Width (including mirrors)	91.8"
Width (excluding mirrors)	78.8"
Width (mirrors folded)	79.7"
Height	78.3"/78.1"

INSTRUMENTATION/DRIVER CONTROLS

Accessory-timed delays with theater-dimming lighting
Auto-dimming rearview mirror
White LED-backlit instrument cluster with speedometer, tachometer, battery gauge, fuel level gauge, coolant temperature gauge and message center
Message center with compass display, distance-to-empty, average fuel economy, odometer and trip odometer
Overhead console with 1st-row map lights, sunglasses storage, power rear quarter window switches and conversation mirror
Memory settings for driver-seat position, sideview mirrors, power-adjustable pedals and power-tilt steering wheel
Leather- and wood-trimmed power-tilt steering wheel with memory and controls for audio, Lincoln SYNC,[®] cruise and Navigation System (if equipped)
Power-adjustable brake and accelerator pedals with memory
Power windows with front one-touch-up/-down feature
Universal Garage Door Opener in overhead console

¹Always wear your safety belt and secure children in the rear seat.

INTERIOR

Authentic wood and satin-nickel accents on steering wheel, center stack and door-trim panels
Dual-zone Electronic Automatic Temperature Control
Auxiliary Climate Control with 2 overhead vents for 2nd and 3rd rows, plus controls in overhead console and back of 1st-row center floor console
1st-row center floor console with floor shifter, armrest, covered storage bin with chrome handle and two-tiered storage, 2 front cupholders, auxiliary audio input jack and USB port, rear audio/climate controls, 2 headphone jacks and 2 rear cupholders
2nd-row center floor console with padded armrest, covered storage and 2 cupholders

	Navigator/L
Head room	39.5" 1st row 39.7" 2nd row 37.5"/38.0" 3rd row
Shoulder room	63.3" 1st row 63.7" 2nd row 51.9"/67.1" 3rd row
Hip room	60.2" 1st row 59.9" 2nd row 50.1"/51.8" 3rd row
Leg room	41.1" 1st row 39.1" 2nd row 37.7" 3rd row
Cargo volume (cu. ft)	103.3"/128.2" Behind 1st row 54.4"/86.3" Behind 2nd row 18.1"/42.6" Behind 3rd row
Towing capacity (max. lbs.)	9000/8700 4x2 8700/8500 4x4

SEATING

1st-row leather-trimmed, heated and cooled, low-back bucket seats with 10-way power adjustments, including power lumbar and recline, 2-way adjustable head restraints and driver-side memory
2nd-row leather-trimmed, heated, low-back fold-down bucket seats with recline and easy entry to 3rd row
3rd-row PowerFold[™] 60/40 split bench seat

AUDIO/COMMUNICATION SYSTEMS

THX[®] II Certified Audio System with AM/FM stereo and 6-disc in-dash CD changer with MP3 capability; driver-adjustable, speed-compensated volume control; and 14 speakers (including an 8" subwoofer)
Lincoln SYNC voice-activated, in-vehicle communications and entertainment system (with USB port in 1st-row center floor console)
SIRIUS Satellite Radio including receiver, low-profile antenna and 6-month complimentary subscription

SAFETY/SECURITY

Personal Safety System[®] for driver and front passenger includes dual-stage front airbags,¹ safety belt pretensioners, safety belt energy-management retractors, safety belt usage sensors, crash severity sensor and restraint control module
AdvanceTrac[®] with RSC[®] (Roll Stability Control[™])
3-point safety belt restraints for all seating positions; height-adjustable in 1st row
Front-seat side airbags¹
Lower anchors and tether anchors for child-safety seats (LATCH) in all 2nd-row seating positions; tether anchor only in 3rd-row center
Perimeter anti-theft alarm
Remote keyless-entry system with integrated keyhead transmitter remotes (2), illuminated entry, and security approach lamps in sideview mirrors
SecuriCode[™] keyless-entry keypad mounted on driver door
SecuriLock[®] passive anti-theft ignition system
Safety Canopy[®] System with 3-row side-curtain airbags¹ and rollover sensor
SOS Post-Crash Alert System





NAVIGATOR L

In addition to equipment on Navigator:

- 24.5 cu. ft. of additional cargo space behind the 3rd-row seat
- Power-deployable running boards
- Cargo Management System
- 33.5-gallon fuel tank

NAVIGATOR/L AVAILABLE PACKAGES

MONOCHROME APPEARANCE PACKAGE^{1,2}

- Chrome upper grille; body-color lower grille
- Body-color lower bodyside cladding with chrome “NAVIGATOR” lettering
- Body-color hood accent
- Power-folding, heated sideview mirrors with body-color mirror caps
- Embroidered Lincoln Star on 1st-row head restraints
- Premium leather-trimmed seats in Stone, Camel or Charcoal Black with contrasting piping

MONOCHROME LIMITED EDITION PACKAGE^{2,3}

- Chrome upper grille; body-color lower grille
- Body-color lower bodyside cladding with chrome “NAVIGATOR” lettering
- Body-color hood accent
- Power-folding, heated sideview mirrors with body-color mirror caps
- “LIMITED EDITION” exterior badge
- Charcoal Black embroidered Lincoln Star on all head restraints
- Black carpeting and floor mats
- Ebony wood trim
- Premium leather-trimmed seats in Stone or Camel with Charcoal Black leather-trimmed inserts and Black piping

CLASS III/IV HEAVY-DUTY TRAILER TOW PACKAGE

- Rear load-leveling air suspension
- Frame-mounted, heavy-duty hitch receiver with 4- and 7-pin wiring harness
- Heavy-duty radiator, flasher and transmission cooler
- Brake module wiring

ELITE PACKAGE³

- Power moonroof
- Voice-activated, hard drive-based Navigation System⁴ featuring SIRIUS Travel Link™ (with complimentary 6-month subscription), nearly 10 gigabytes of digital storage for pictures and music, and on-screen image from Rear View Camera
- THX® II Certified 5.1 Surround Audio System with AM/FM stereo/single-CD/DVD/Jukebox, MP3 capability, 14 speakers (including an 8" subwoofer), 600 watts of power and 12-channel amplifier
- Power-deployable running boards
- Rear-Seat DVD Entertainment System

NAVIGATOR/L AVAILABLE EQUIPMENT

- Control Trac® 4-wheel-drive (4WD) system
- 20" 7-spoke chrome-aluminum wheels
- Power moonroof with medium overhead console
- Chrome hood accent⁴
- Power-deployable running boards (standard on Navigator L)
- 2nd-row leather-trimmed 40/20/40 split-folding bench seat with fold-flat feature, outboard heat and recline, and center section that slides forward
- 2nd-row center floor console delete
- Premium leather-trimmed seating with contrasting piping⁵
- Rear-Seat DVD Entertainment System with 8" screen, remote control and 2 sets of wireless headphones

NAVIGATOR/L AVAILABLE ACCESSORIES

- Dual INViSiON® DVD Headrests⁶
- Trailer hitch balls/draw bars
- Garmin® nüvi® Portable Navigation System⁶
- Front illuminated sill plates
- Interior cargo organizer
- Interior cargo area protector
- Premium carpeted floor mats
- All-weather floor mats
- Interior lighting kit
- Splash guards
- Cargo-Logic® System
- Remote start systems
- Vehicle security system

NAVIGATOR/L WHEELS

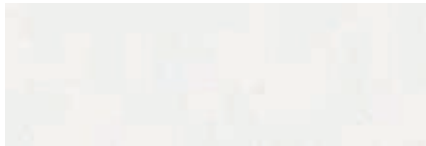
- A 18" 7-spoke aluminum – Standard
- B 20" 7-spoke chrome-aluminum – Available
- C 22" chrome cast-aluminum⁷ – Available as a Genuine Lincoln Accessory
- D 22" chrome cast-aluminum⁷ – Available as a Genuine Lincoln Accessory

¹Not available with chrome hood accent or Monochrome Limited Edition Package. ²Available with White Platinum Tri-Coat, Stone Green, Black and Vapor Silver exterior colors. ³Not available with chrome hood accent, premium leather-trimmed seats with piping, or Monochrome Appearance Package. ⁴Not available with Monochrome Limited Edition Package or Monochrome Appearance Package. ⁵Not available with Monochrome Limited Edition Package; included with Monochrome Appearance Package. ⁶Lincoln Licensed Accessories. ⁷Only available on Navigator L with a suspension kit. Vehicle restrictions may apply, please see your dealer for more details. Additional equipment may be required.



EXTERIOR

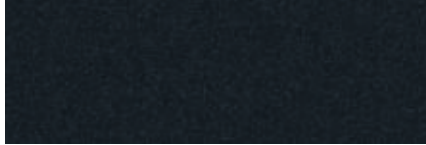
INTERIOR



WHITE PLATINUM TRI-COAT^{1,2}



DARK BLUE PEARL



BLACK PEARL SLATE¹



STONE GREEN



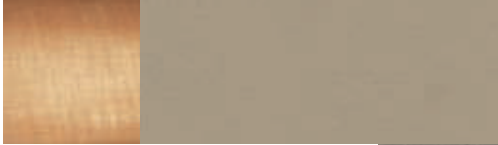
SANGRIA RED¹



BLACK



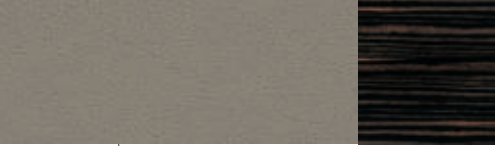
VAPOR SILVER



CAMEL LEATHER
WITH FIGURED MAPLE WOOD
(ALSO AVAILABLE WITH SAND PIPING)



CHARCOAL BLACK LEATHER
WITH EBONY WOOD
(ALSO AVAILABLE WITH CAMEL PIPING)



STONE LEATHER
WITH EBONY WOOD
(ALSO AVAILABLE WITH BLACK PIPING)

¹New for 2009. ²Additional cost.
Lincoln uses clearcoat paint for beauty and protection. All exterior
paints are Metallic except for Black. Colors are representative only.



FOR MORE INFORMATION ON THE 2009 LINCOLN NAVIGATOR, VISIT lincoln.com.



Customer Assistance 800.521.4140

Roadside Assistance 800.241.3673



LINCOLN
REACH HIGHER