

2005



LINCOLN

NAVIGATOR



Stunning Presence.

Lincoln Navigator is elegantly restyled for 2005 with sleek new exterior lines reinforcing its powerful proportions. The all-new front fascia blends a molded-in-color lower grille and integral fog lamps into a single, angular form while the rear fascia and bodyside cladding give Navigator a clean, modern appearance. An uncompromising luxury SUV, Navigator empowers you with the freedom to enjoy life to its fullest, confidently commanding attention everywhere you travel. Now is the time to Travel Well.

Intensely Composed.

As a Lincoln, Navigator is designed to deliver remarkably smooth, responsive ride and handling. As a full-size luxury SUV, it is built to deliver all this and more, regardless of terrain or weather conditions.

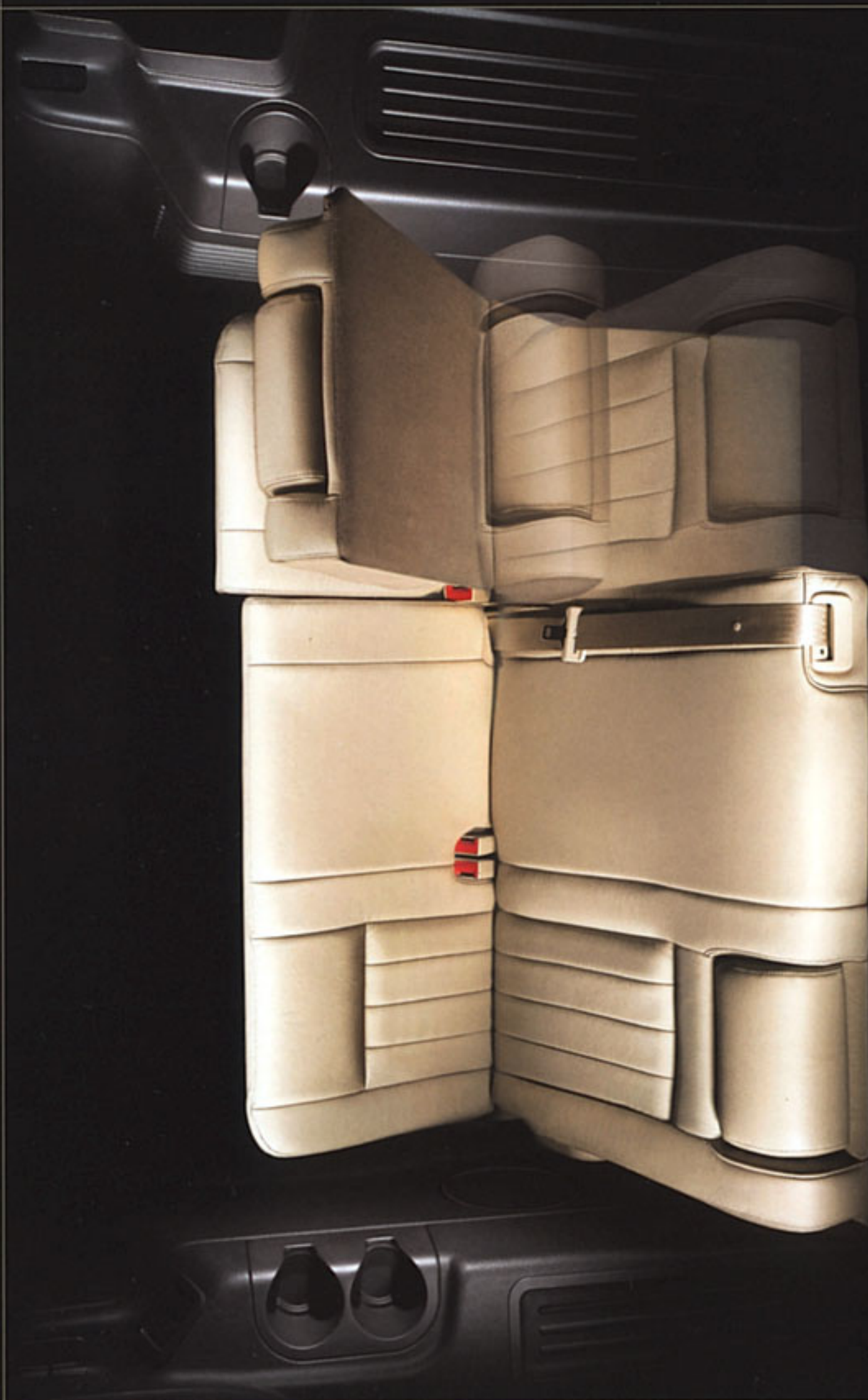
AdvanceTrac® with Roll Stability Control™ (RSC)* is standard on every Navigator. By automatically applying the brakes and modulating engine torque to help maintain control whenever it detects wheel slip, AdvanceTrac gives you more control in adverse conditions such as ice, gravel or rain. Class-exclusive** RSC utilizes a gyroscopic sensor to closely monitor the vehicle's roll stability condition and engages AdvanceTrac as soon as an unstable situation is detected, further enhancing vehicle stability under fully loaded conditions and when driving on uneven surfaces. It's peace of mind and driving confidence you can't find anywhere else.

At the heart of Navigator's impeccable road manners, a 4-wheel independent suspension allows each wheel to handle bumps in the road with minimal effect on the others. At low speeds, variable-assist power rack-and-pinion steering makes it easy to maneuver Navigator into tight spaces. When you travel at highway speeds, the steering automatically adjusts to provide more precise response.

In Lincoln Navigator, all roads lead to luxury.

*Remember that even advanced technology cannot overcome the laws of physics. It's always possible to lose control of a vehicle due to inappropriate driver input for the conditions.
**Full-size luxury SUV.





Feel the Power.

A class-exclusive, Navigator Ultimate's standard power-folding 3rd-row seats disappear at the touch of a button, creating a flat load floor. Press another button and stand back as Ultimate's standard power liftgate raises or lowers on its own. Loading is easy, even with your hands full. Another class-exclusive, available power running boards on Navigator Ultimate will have you feeling like royalty right from the start. They glide out to provide a step when the door is opened and retract when the door is closed. Power-adjustable brake and accelerator pedals are standard on every Navigator. With 3" of travel and a memory feature for 2 different drivers, you'll always be comfortable behind the wheel. Large, power-fold, heated sideview mirrors are another of Navigator's exceptional standards. The heated feature quickly melts ice and snow, while built-in turn indicators clearly signal your intentions. The memory feature also recalls mirror positions for 2 different drivers. When returning to your vehicle in the dark, you'll be greeted by the warm glow of integrated security approach lamps. Navigator offers this array of powerfully innovative amenities to ensure that you and your passengers Travel Well.





EFFORTLESS EMPOWERMENT



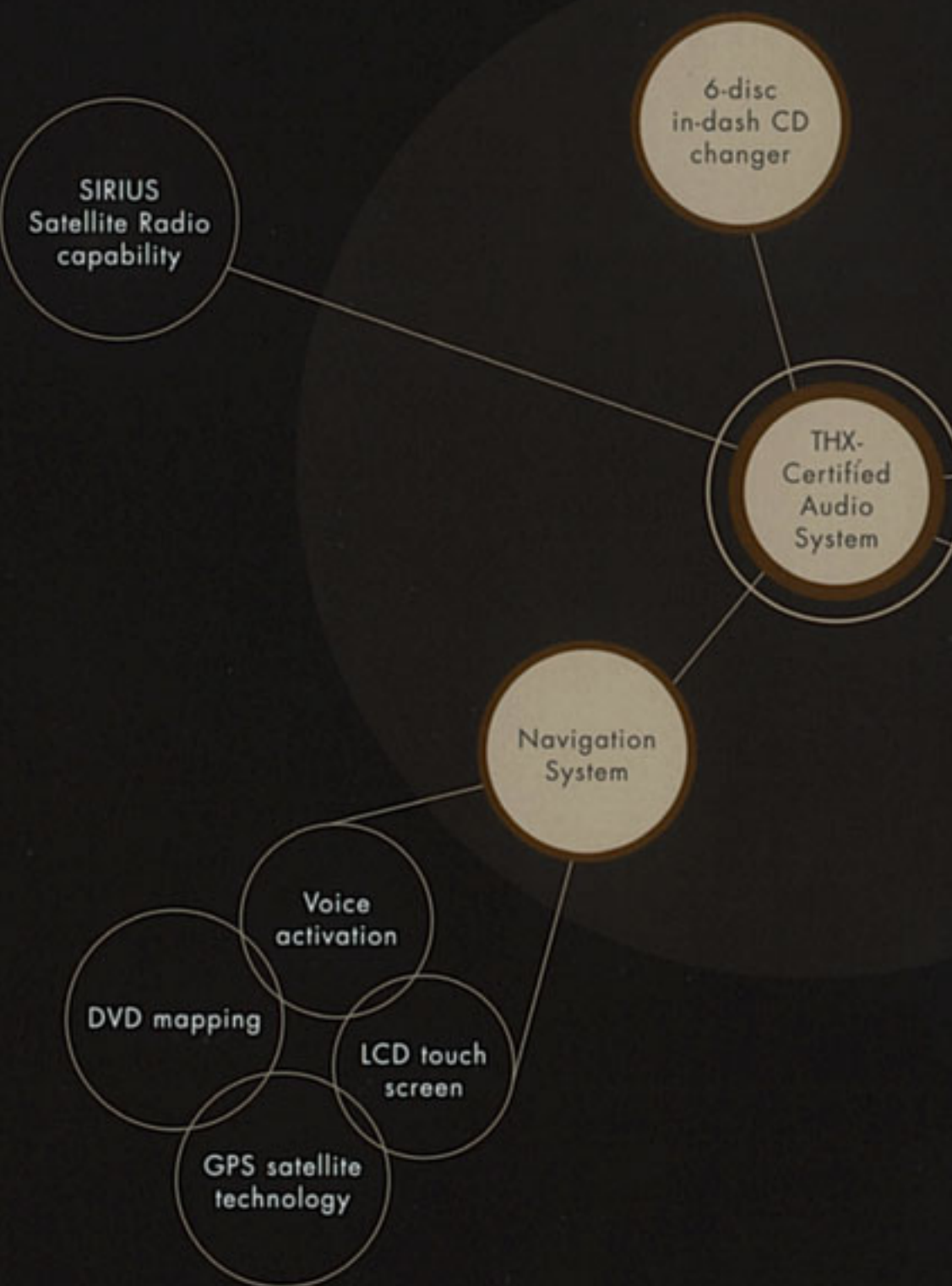
True to its Lincoln lineage, Navigator offers the ultimate in luxury with its available class-exclusive heated *and* cooled front seats. Standard on Navigator Ultimate, they enable you to perfect your environment with a choice of 3 different settings. Navigator's standard 7-passenger seating configuration includes dual reclining seats and a center floor console in the 2nd row, while the available 8-passenger configuration features a 40/20/40 split-folding bench seat in the 2nd row. A full 36.3" of 3rd-row leg room helps ensure every Navigator passenger travels in complete comfort.





Only the finest materials are selected to create this warmly inviting sanctuary inside Navigator. Premium leather, rich American walnut burl wood, smooth satin-nickel accents and crisp, white LED lighting grace its interior with a blend of traditional sophistication and modern elegance that are uniquely Lincoln. And while the controls may resemble fine art, each is also carefully designed for comfort and ease of use. Note the perfect positioning and proportion of the new center-console-mounted shifter, for instance. Just one of many fine details.



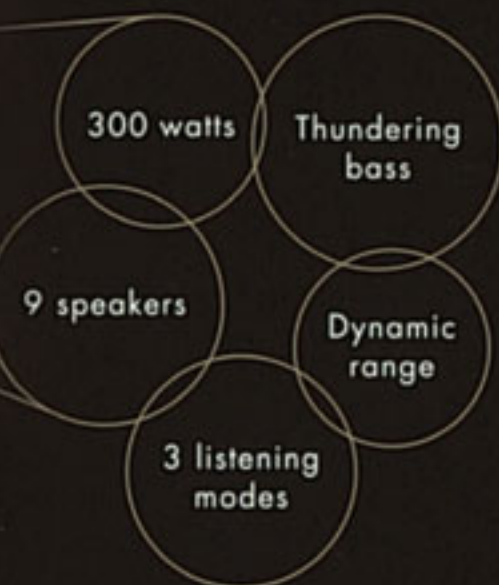


Certified to Perform.

Lincoln Navigator is the first in its class to offer a cinema-quality sound system created exclusively for an SUV. Just like THX® technology at the movies, the Lincoln Soundmark™ THX-Certified Audio System ensures the finest-quality sound. THX engineers analyzed the acoustic properties of the Lincoln Navigator interior as they fine-tuned the system's output. 9 speakers, 300 watts of power, a 6-disc in-dash CD changer and 3 different listening modes deliver the best-possible sound to each seat, according to how many people are inside. To further enhance your travel experiences, we've packaged this sonic treasure with a Navigation System that understands over 170 voice commands, calling out directions turn by turn. It combines DVD mapping with Global Positioning System (GPS) satellite technology. This inspiring system is available on Navigator Ultimate.

SIRIUS Satellite Radio* service, which features over 120 channels of coast-to-coast music, news and entertainment, can be added to the available Soundmark THX-Certified Audio System or the standard Audiophile Sound System for a seemingly endless outpouring of audio bliss.

*See your Lincoln Mercury Dealer for SIRIUS installation and activation details.



The available Lincoln Soundmark THX-Certified Audio/Navigation System features a 6.5" color LCD screen that presents high-quality navigation graphics, while Map, Destination and Menu buttons, touch-screen simplicity and voice activation make it instinctively easy to use.

The Fine Art of Entertaining.

Gather your closest friends and family (whether for a cross-country journey or a jaunt into town), and Lincoln Navigator is sure to be the transportation of choice. Filled with luxuriously inviting features, Navigator ensures a pleasant traveling environment for one and all. Dual-zone Electronic Automatic Temperature Control (below left) allows the driver and front passenger to select different temperatures and automatically maintains the desired settings on either side of the front cabin. The rear cabin climate can be controlled by 2nd-row passengers via a separate set of fan and temperature controls. Another benefit of being seated in the back, 2nd- and 3rd-row passengers can enjoy DVDs, CD/MP3s and video games on the available Rear-Seat DVD Entertainment System (above right). An infrared remote control lets viewers make easy adjustments, while wireless headphones allow them to listen in comfort and help keep the cabin quiet. The standard Lincoln Soundmark™ Audiophile Sound System (below center) includes an integrated 6-disc in-dash CD changer, high-power amplifier, 9 Audiophile speakers with sail-mounted tweeters and a subwoofer. Navigator Ultimate's mini-overhead console offers 1st-row map lights, power rear-quarter-window switches, a power liftgate switch, auxiliary climate controls and even a conversation mirror. Entertaining has never been so easy.



Exceptional Peace of Mind.

Lincoln Navigator is the only vehicle in its class to receive the government's highest crash test safety rating* – 5 stars – which is not surprising when you consider its array of innovative safety and security features. Up front, Navigator's Personal Safety System™ controls airbag energy-deployment levels and safety belt tension in certain frontal accidents to provide optimum protection for the driver and front passenger. On the sides, the Safety Canopy™ System deploys side-curtain airbags from the headliner in certain side-impact collisions and rollover events to offer enhanced head protection for 1st- and 2nd-row outboard passengers.

When any tire (except the spare) drops below recommended pressure, the Tire Pressure Monitoring System displays an alert in the message center. And finally, our convenient Reverse Sensing System alerts you with a beeping tone if you come within 20' of an object when in Reverse.

*Government's driver and passenger front crash test.







ALWAYS READY



Muscle, Refined.

New this year, Navigator's 5.4L SOHC 3-valve V-8 engine and 6-speed automatic transmission combine to deliver improved off-the-line acceleration. The new V-8 produces an impressive 300 hp and 365 lb.-ft. of torque, empowering you to pass with confidence and tow heavy loads. In fact, properly equipped models let you tow up to 8600 lbs. That's more than enough to get you cruising the big lakes. When the engine is shut off and the vehicle is in Park, Navigator's 4-corner load-leveling air suspension lowers 1" for easier entry and exit. It also levels the ride according to payload and towing demands – and in off-road 4x4 conditions – to ensure a more comfortable journey.

300 MAJESTIC HORSES

Serious Capability.

After putting a Navigator 4x4 to the test in notorious Death Valley, *Motor Trend* said it "...easily tackled even the most forbidding terrain we could find." Navigator's available Control Trac® 4-Wheel-Drive (4WD) System delivers exceptional overall performance in everyday driving as well. The high-range 2-wheel-drive (2H) mode sends all power to the rear wheels. In adverse on-road situations, the Automatic (A4WD) mode sends torque to the wheels with the most grip. The high-range 4-wheel-drive (4H) mode is intended for use in off-road or low-traction situations. And low-range 4-wheel drive (4L), which significantly multiplies engine torque to the wheels, should be reserved for extreme off-road conditions and very low-speed towing.



LUXURY

Performance

Brakes - power 4-wheel disc with Anti-lock Brake System (ABS) and Electronic Brake Force Distribution (EBD)

Cooling System - fail-safe

Drivetrain - rear-wheel drive

Engine - 5.4L SOHC 3-valve V-8

Stabilizer Bars - front and rear

Steering - power, variable-assist, rack-and-pinion

Suspension - 4-corner load-leveling air suspension, independent front and rear

Tires - P255/70R18 all-season black sidewall

Transmission - 6-speed automatic with overdrive

Interior

Assist Handles - color-keyed, 2 in 1st and 2nd rows and assist pull in liftgate

Audio - Lincoln Soundmark™ Audiophile Sound System with AM/FM stereo/6-disc in-dash CD changer, driver-adjustable speed-compensated volume, 9 speakers including a subwoofer and rear-seat controller, SIRIUS Satellite Radio capable*

Auxiliary Climate Control - 2 overhead vents for 2nd and 3rd rows, controls in overhead console and back of 1st-row floor console

Cargo Area Storage - behind 3rd row under floor and bins in quarter trim panels

Cigar Lighter - located in console

Climate Control - Dual-zone Electronic Automatic Temperature Control with secondary steering-wheel-mounted controls and heated/cooled seat controls (if equipped)

Clock - analog, mounted between instrument panel center vents

Cupholders - 2 in 1st row, 4 in 2nd row and 2 in 3rd row

Floor Consoles - 1st row with floor shifter, power window switches, covered storage bin with chrome handle, 2 front cupholders, rear audio/climate controls, 2 headphone jacks and 2 rear cupholders; 2nd row with padded armrest, covered storage and 2 cupholders

Floor Mats - color-keyed carpeted, 1st and 2nd rows

Power Points - located in 1st row, 2nd row and rear cargo area

Rearview Mirror - auto-dimming

Seats - 1st row: leather-trimmed, low-back bucket seats, power 10-way seats including power lumbar and recline, 4-way adjustable head restraints and driver's-side memory; 2nd row: leather-trimmed low-back fold-down bucket seats with recline, 2-way head restraints and easy entry to 3rd row; 3rd row: 60/40 split bench fold-flat-into-floor seat with 2-way adjustable head restraints (outboard only) and center-seat integrated restraint

Visors - dual blade with dual illuminated mirrors and driver's-side

HomeLink® Universal Transceiver

Exterior

Antenna - concealed

Body-side Cladding - color-keyed with color-keyed wheel-lip moldings

Bumpers - color-keyed upper fascia and accent-colored lower fascia

Door Handles - body-color bezel with chromed strap

Fog Lamps

Glass - privacy in rear doors, rear-quarter windows and liftgate; solar-tinted in front doors and windshield

Grille - silver-painted slats with chrome surround, integrated with hood

Headlamps - quad-beam halogen

Liftgate - gas cylinder lift with flip-up glass

Luggage Rack - with bright accents and black crossbars

Power Flip-Out Rear Quarter Glass

Rear-Window Defroster

Running Boards - fixed

Sideview Mirrors - power-fold heated with security approach lamps, integrated turn-signal indicators and memory feature

Standard-Duty Trailer Tow Package - Class III frame-mounted trailer hitch receiver integrated into rear fascia, 4-pin wiring harness

Tow Hooks - black, integrated into front fascia

Wheels - 18" 7-spoke machined-aluminum with 17" steel spare

Wipers - windshield: speed-sensitive intermittent with

3 washers; rear window: 2-speed intermittent with washer

Safety/Security

AdvanceTrac® with Roll Stability Control™ (RSC)

Airbags* - dual-stage driver and front-passenger; side-curtain airbags as part of Safety Canopy™ System

Autolamp - automatic on/off headlamps with delay

Battery Saver

Brake/Shift Interlock

Child-Safety Rear Door Locks

Keyless-Entry Keypad - driver's door-mounted

LATCH - 2nd row: lower anchors and tether anchors for child-safety seats, all seating positions; 3rd row: center tether anchor only

Personal Safety System™ - including dual-stage front airbags with front crash severity sensor, sensors to detect front safety belt usage and driver's-seat position, front safety belt pretensioners and energy-management retractors

Remote Keyless-Entry System - with illuminated entry and security approach lamps

Reverse Sensing System - integrated in bumper

Safety Belts - color-keyed 3-point restraints for all seating positions and height-adjustable for 1st and 2nd rows

Safety/Security (continued)

Safety Canopy System - 1st- and 2nd-row side-curtain airbags with rollover sensors

SecuriLock® Passive Anti-Theft System

Side-Impact Door Beams

Tire Pressure Monitoring System*

Instrumentation/Driver Control

Accessory Timed Delays

HomeLink® Universal Transceiver - located in driver's-side visor

Instrument Cluster - white LED back-lit cluster with speedometer, tachometer, fuel level, coolant temperature and message center

Instrument Panel - soft touch with American walnut burl wood and satin-nickel accents, power point, Control Trac® switch (if equipped), headlamp controls, power-adjustable pedal controls and analog clock

Memory Setting Controls - mounted in door-trim panel for driver's-seat position, sideview mirrors and power-adjustable pedals

Message Center - includes compass display, distance-to-empty, average fuel economy, odometer and trip odometer

Overhead Console - includes 1st-row map lights, sunglasses storage, power rear-quarter-window switches, auxiliary climate controls, conversation mirror and power liftgate switch (if equipped)

Power-Adjustable Pedals - with memory

Power Door Locks

Power Windows - with one-touch-up/down driver's-side

Speed Control - electronic, steering-wheel-mounted

Steering Wheel - tilt, leather- and wood-trimmed with audio, climate, speed and Navigation System controls (if equipped)

ULTIMATE

In addition to or in place of equipment on Luxury:

Heated and Cooled Seats - driver and front-passenger with 3 settings

Moonroof - power, includes mini-overhead console

Power-Folding 3rd-Row Seat - 60/40 split bench

Power Liftgate

* Dealer-installed option. * Always wear your safety belt and secure children in the rear seat. * HomeLink is a registered trademark of Johnson Controls. * Excludes steel spine.

LINCOLN NAVIGATOR

Comparisons based on 2005 competitive models, publicly available information and Ford certification data at time of printing. Following the publication of this brochure, certain changes in standard equipment, options, prices and the like, or product delays may have occurred which would not be included in these pages. Your Lincoln Mercury Dealer is your best source for up-to-date information. Lincoln Mercury reserves the right to change product specifications at any time without incurring obligations. Options shown or described in this brochure are available at extra cost and may be offered only in combination with other options or subject to additional ordering requirements or limitations.

AVAILABLE EQUIPMENT

LUXURY
ULTIMATE

- Appearance Option Package - monotone painted front/rear lower fascias, license-plate surround and grille (chromed slats with body-color surround); Rear-Seat DVD Entertainment System and heated and cooled front seats (available with Black or Cashmere Tri-Coat exterior)
- Audio - AM/FM stereo/single-CD/cassette player
 - Audio/Navigation - Lincoln Soundmark THX®-Certified Audio System including touch-screen DVD/Satellite Navigation System and 6-disc in-dash CD changer, SIRIUS Satellite Radio capable
- ○ Control Trac® - 4x4 system
- ○ Headlamps - High-Intensity Discharge (HID)
- S Heated and Cooled Seats - driver and front-passenger with 3 settings
 - Limited Edition Monotone Appearance Package - monotone-painted front and rear lower fascias, license-plate surround, running boards, bodyside cladding and grille (chromed slats with body-color surround); chromed exhaust tip; 18" 7-spoke chrome-aluminum wheels; "Limited Edition" exterior badge; and leather-trimmed seats with contrasting seat piping in Charcoal Black and embossed "Lincoln" logo (available with Black or Cashmere Tri-Coat exterior)
 - Monotone Appearance Package - monotone-painted front and rear lower fascias, license-plate surround, running boards, bodyside cladding and grille (chromed slats with body-color surround); chromed exhaust tip and 18" 7-spoke chrome-aluminum wheels (available with Black or Cashmere Tri-Coat exterior)
- S Moonroof - power, includes mini-overhead console
- ○ Rear-Seat DVD Entertainment System - includes 2nd-row overhead DVD/CD player with MP3 capability, infrared remote, flip-down 7" color LCD screen and 2 sets of wireless headphones
 - Running Boards - power-deployable (not available with 40/20/40 2nd-row split seat on 4x4)
- ○ Seats - 2nd-row premium leather-trimmed 40/20/40 split-fold bench with fold-flat feature, out-board recline, and center section that slides forward up to 11" (not available with 4-wheel-drive models with power running boards)
- ○ Heavy-Duty Trailer Tow Package - includes frame-mounted Class III/IV hitch receiver, 4- and 7-pin wiring harness, heavy-duty radiator, heavy-duty flashers, transmission cooler and brake module wiring
- Wheels - 18" 7-spoke chrome-aluminum with P255/70R18 black sidewall all-season tires

S=Standard ○=Optional

WHEELS



A 18" 7-spoke chrome-aluminum	Available on Ultimate and included with the Monotone Appearance Package and the Limited Edition Monotone Appearance Package
B 18" 7-spoke chrome-clad aluminum	Optional on Luxury and Ultimate
C 18" 7-spoke machined-aluminum	Standard on Luxury and Ultimate

DRIVETRAIN

Engine	5.4L SOHC 3-valve V-8
Layout	Front engine, rear-wheel drive or available 4-wheel drive
Horsepower (hp @ rpm)	300 @ 5000 (SAE net)
Torque (lb.-ft. @ rpm)	365 @ 3750 (SAE net)
Compression Ratio	9.5:1
Transmission	6-speed automatic overdrive with overdrive lockout
Fuel Injection	Sequential multi-port electronic
Ignition	Coil-on-plug
Cooling System	Fail-safe
Axle Ratio	3.73:1

CHASSIS

Suspension	Front	Independent Short- and Long-Arm (SLA) with monotube dampers, air springs and stabilizer bar
	Rear	Independent Short- and Long-Arm (SLA) with toe link, monotube dampers, air springs and stabilizer bar
Air Suspension		4-corner load-leveling independent system
Shock Absorbers		Monotube
Steering		Power, speed-sensitive, variable-assist rack-and-pinion
Brakes		Power 4-wheel disc Anti-lock Brake System (ABS) with Electronic Brake Force Distribution (EBD)
Wheels		Standard 18" 7-spoke machined-aluminum
Tires		Standard P255/70R18 BSW all-season
Towing Equipment		Standard-Duty Trailer Tow Package includes Class III frame-mounted hitch receiver and 4-pin wiring harness
		Available Heavy-Duty Trailer Tow Package includes Class III/IV load-distributing hitch receiver, 4-pin and 7-pin trailer wiring harness, heavy-duty radiator, heavy-duty flashers and transmission cooler
Trailer Weight	2WD: 6000 lbs. std.	4WD: 6000 lbs. std.
	2WD: 8600 lbs. max.	4WD: 8300 lbs. max.

DIMENSIONS

Head Room	39.6" 1st row; 39.7" 2nd row; 37.8" 3rd row
Leg Room	41.2" 1st row; 38.7" 2nd row; 36.3" 3rd row
Hip Room	57.9" 1st row; 58.0" 2nd row; 50.2" 3rd row
Shoulder Room	63.3" 1st row; 63.4" 2nd row; 52.3" 3rd row
Curb Weight	5686 lbs. (2WD); 5947 lbs. (4WD)
Wheelbase	118.8"
Length	207.5"
Height	77.7" (4x2); 77.8" (4x4)
Width	94.1" (mirrors extended)
	82.2" (mirrors folded with fixed running boards)
	80.2" (mirrors folded with power running boards)
Track	Front/Rear 66.9"/67.1"
Ground Clearance	8.6"
Fuel Capacity	28.0 gallons
Cargo Volume (cu. ft.)	104.8 max.
	54.6 max. behind 2nd-row seat; 18.3 max. behind 3rd-row seat

Cargo and load capacity limited by weight and weight distribution.



LINCOLN RESOURCES AND SERVICES



Ford Credit Get the ride you want. Whether you plan to lease or finance, you'll find the choices that are right for you at Ford Credit. Ask your Lincoln Mercury Dealer for details or check us out at fordcredit.com

Lincoln Personal Consultant To ensure we're offering our customers the best service possible, just visit our Web site at Lincoln.com/pc and one of our manufacturer's representatives will help with anything from price quotes to product features to arranging a test drive at your local Lincoln Mercury Dealer – at no cost or obligation.

Ford Motor Company Insurance Services Choose the insurance program that's designed for your vehicle – Ford Motor Company Insurance Services. Our program helps you receive the rates and service you deserve. Call 877.367.3847 or visit us at fordvip.com for a no-obligation quote. Insurance offered by American Road Services Company (in CA, American Road Insurance Agency), a licensed agency and subsidiary of Ford Motor Company.

Ford Extended Service Plan For a purchase or lease, the Ford Extended Service Plan (ESP) gives you "Peace-of-Mind" protection designed to cover key vehicle components and protect you from the cost of unexpected repairs. Ask your Lincoln Mercury Dealer for an ESP backed by Ford Motor Company and honored at all Ford and Lincoln Mercury dealerships.



Lincoln CommitmentSM

NAMED THE #1 NAMEPLATE IN CUSTOMER SATISFACTION WITH DEALER SERVICE* BY J.D. POWER AND ASSOCIATES, LINCOLN HAS LONG CRAFTED LUXURY VEHICLES THAT EXCEED YOUR EXPECTATIONS. AN EQUALLY SUPERIOR LEVEL OF SUPPORT AND SERVICE IS YOURS AS WELL. COMPLIMENTARY MAINTENANCE MAKES DRIVING YOUR LINCOLN NAVIGATOR EVEN MORE OF A PLEASURE. SIMPLY BRING YOUR LINCOLN TO AN AUTHORIZED LINCOLN SERVICE CENTER, AND SCHEDULED MAINTENANCE WILL BE PERFORMED AT NO CHARGE THROUGHOUT YOUR FIRST YEAR OF OWNERSHIP OR 12,000 MILES, WHICHEVER COMES FIRST.

A 4-YEAR/50,000-MILE BUMPER-TO-BUMPER NEW-VEHICLE LIMITED WARRANTY COVERS REPAIR, REPLACEMENT OR ADJUSTMENT OF PARTS AT NO ADDITIONAL COST. AND ROADSIDE ASSISTANCE FOR THE SAME TIME PERIOD PROVIDES ADDITIONAL PEACE OF MIND. YOUR LINCOLN MERCURY DEALER WILL PROVIDE COMPLETE DETAILS ON ALL OF THE PRIVILEGES THAT COME WITH OWNING A LINCOLN.

*J.D. Power and Associates 2004 Customer Service Index (CSI) Study.SM
Study based on 97,204 consumer responses. www.jdpower.com

COLOR SWATCHES ENCLOSED



Lincoln Test Drive 888.566.8888
Customer Assistance 800.521.4140
Roadside Assistance 800.241.3673

Visit Lincoln.com

©2004 Lincoln Mercury, Ford Motor Company 05-2LNAVCA7

VOL 2



L I N C O L N

Lincoln Trim Selector

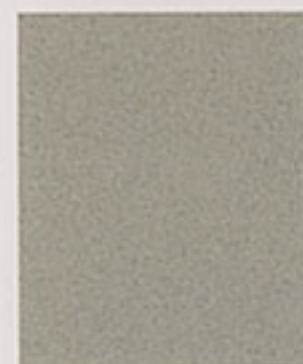
LINCOLN EXTERIOR PAINT COLORS



Black



Vivid Red Metallic



Light French Silk Metallic



Silver Birch Metallic



Satellite Silver Metallic



Light Ice Blue Metallic



Norsea Blue Metallic



Light Tundra Metallic



Dark Blue Pearl Metallic



Cashmere Tri-Coat



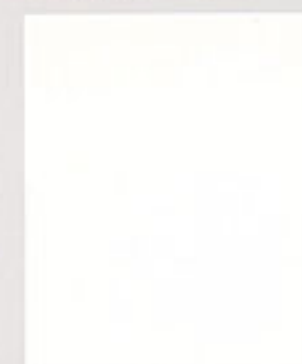
Bronze Metallic



Charcoal Beige Metallic



Oxford White



Vibrant White



Ceramic White
Pearlescent Tri-Coat



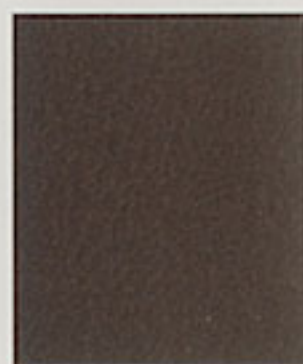
Ivory Parchment Tri-Coat



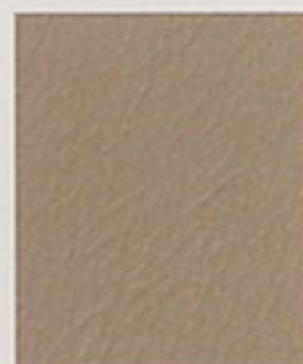
Dove



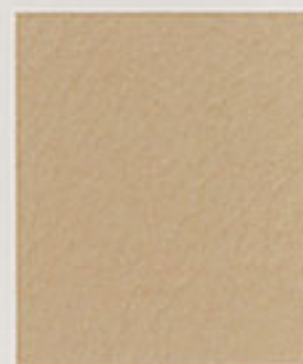
Camel



Black



Medium Light Stone



Light Parchment

NAVIGATOR

Dove

Camel

• •	Black	[1, 2, 3]
• •	Vivid Red Metallic	
• •	Light French Silk Metallic	
• •	Silver Birch Metallic	
• •	Satellite Silver Metallic	
• •	Light Tundra Metallic	
• •	Cashmere Tri-Coat*	[1, 2, 3]
• •	Charcoal Beige Metallic	
• •	Oxford White	

Special Navigator model color choices

[1] Navigator Monotone Appearance Package

[2] Navigator Appearance Option Package

[3] Navigator Limited Edition Monotone

Appearance Package

All other models available in all colors.

AVIATOR

Dove

Camel

• •	Black	[4]
• •	Vivid Red Metallic	
• •	Light French Silk Metallic	
• •	Silver Birch Metallic	
• •	Light Tundra Metallic	
• •	Dark Blue Pearl Metallic	
• •	Charcoal Beige Metallic	
• •	Oxford White	
• •	Ivory Parchment Tri-Coat*	

Special Aviator model color choices

[4] Jet Black

All other models available in all colors.

Lincoln uses clearcoat paint for beauty and protection.

LS

Dove

Camel

Black

• • •	Black	[5, 6]
• • •	Vivid Red Metallic*	[5, 6]
• •	Light French Silk Metallic	
• •	Silver Birch Metallic	[5, 6]
• •	Norsea Blue Metallic	
• •	Light Tundra Metallic	
• •	Cashmere Tri-Coat*	
• •	Bronze Metallic	
• •	Charcoal Beige Metallic	
• •	Ceramic White Pearlescent Tri-Coat*	

Special LS model color choices

[5] LS V-6 Appearance Package

[6] LS V-8 LSE Package (excludes Dove leather)

All other models available in all colors.

TOWN CAR

Dove

Black

Medium Light Stone

Light Parchment

• • •	Black	[7, 9]
• •	Light French Silk Metallic	[7, 9]
• •	Silver Birch Metallic	[7, 9]
• •	Light Ice Blue Metallic	
• •	Norsea Blue Metallic	
• •	Light Tundra Metallic	[7]
• •	Cashmere Tri-Coat*	[7]
• •	Charcoal Beige Metallic	[7, 9]
• •	Vibrant White	
• •	Ceramic White Pearlescent Tri-Coat*	[7]
• •	Silver Birch Metallic/Charcoal Beige Metallic	[8, 9]
• •	Light Tundra Metallic/Light French Silk Metallic	[8]
• •	Cashmere Tri-Coat*/Light French Silk Metallic	[8, 9]
• •	Ceramic White Pearlescent Tri-Coat*/Light French Silk Metallic	[8]

Special Town Car model color choices

[7] Town Car Signature L

[8] Limited Edition (Medium Light Stone leather only)

[9] Pro Series (Medium Light Stone seats with Dark Stone contrast stitching)

All other models available in all colors.

*Additional cost.

