



2003 LINCOLN TOWN CAR





TABLE OF CONTENTS

STATEMENT OF CHARACTER

03  
05  
13  
22  
26

CLASSIC ELEGANCE

REFINEMENT

DETAILS

FACTS

PALETTE



STATEMENT OF CHARACTER

IN A DESIGNER'S HANDS, METAL, WOOD AND LEATHER CAN QUICKLY BECOME A COLLECTION OF EMOTIONS

AND A STATEMENT OF CHARACTER. A SYMBOL FOR THE

CONFIDENT  
AND SELF-ASSURED

WHO ADMIRE STYLE AND

HAVE AN APPRECIATION FOR UNDERSTATED ELEGANCE. INTRODUCING THE NEW 2003 TOWN CAR,

THE PRIDE OF THE LINCOLN LEGACY AND AN ICON OF AMERICAN LUXURY.





CLASSIC ELEGANCE

IF EMOTIONS INSPIRED THE TOWN CAR, DISCIPLINE SHAPED IT.

LINCOLN ENGINEERS HAVE STRUCK A BALANCE BETWEEN CLASSIC AND CONTEMPORARY DESIGN.

THE SIGNATURE WATERFALL GRILLE EVOKES A

SOPHISTICATED,  
YET SIMPLE ELEGANCE. A CONSISTENT THEME

AS THE DESIGN ADHERES TO THE FUNDAMENTALS OF STYLE:

CONFIDENT, GRAND AND LUXURIOUS, YET SUBTLE AND UNPRETENTIOUS.





Lincoln Town Car Signature Series in Silver Birch Clearcoat Metallic. Shown with available equipment.





2003 MARKS THE RETURN OF  
THE LINCOLN FOUR-POINTED  
STAR ON THE CREST OF  
THE WATERFALL GRILLE.  
A PROMINENT EXCLAMATION  
TO THE NEXT GENERATION  
TOWN CAR. UNDERNEATH IT,  
A CONFIDENT V8, TEMPERED  
BY A PERFORMANCE-  
ENHANCED SUSPENSION.  
THIS IS A LUXURY SEDAN THAT  
IS AS MUCH A PLEASURE TO  
DRIVE AS IT IS TO ADMIRE.





AS LIFE GETS BETTER,  
IT OFTEN GETS BIGGER.  
THE TOWN CAR HAS BEEN  
DESIGNED APPROPRIATELY  
TO AFFORD A MULTITUDE  
OF SPACIOUS COMFORTS  
SUCH AS AMPLE HEAD AND LEG  
ROOM. PLUS A CAVERNOUS TRUNK  
WAITING TO BE FILLED WITH ALL  
THE REQUISITE AMUSEMENTS  
OF THOSE WHO DON'T JUST TRAVEL,  
BUT TRAVEL WELL.

Lincoln Town Car Cartier in Silver Birch Clearcoat Metallic. Shown with available equipment.



REFINEMENT



FEW AUTOMOBILES OWE THEIR CLASSIC REFINEMENT TO DETAIL AS DOES TOWN CAR.

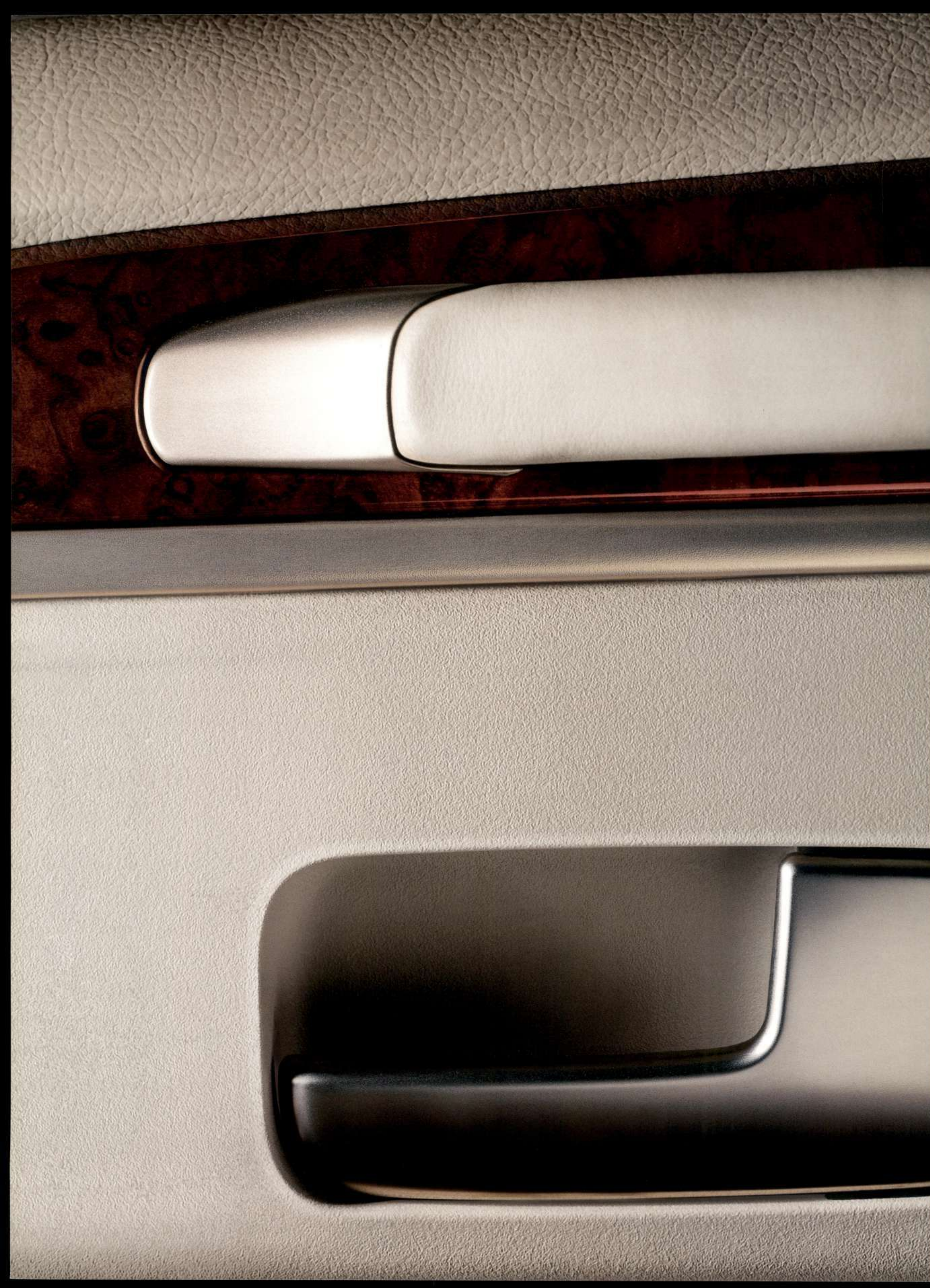
WE PRIDE OURSELVES ON BALANCING AESTHETIC PLEASURE WITH TECHNICAL PRECISION.

CASE IN POINT, THE LINCOLN TIMEPIECE.

SCULPTED  
AND ADORNED IN A POLISHED SATIN NICKEL SETTING.

A SMALL EXAMPLE OF LINCOLN'S DEDICATION TO CRAFTSMANSHIP, INFLUENCED BY DECADES OF TRADITION.





THE INTERIOR, AN APPROPRIATE BLEND OF FINE DETAIL

AND TRUE LUXURY. INTUITIVE CONTROLS AND INDULGENT AMENITIES

SET IN A FRAME OF LEATHER AND AMERICAN WALNUT BURL ACCENTS.





Lincoln Town Car Cartier with Light Parchment interior. Shown with available equipment.





LINCOLN OFFERS A 4-YEAR/50,000-MILE BUMPER-TO-BUMPER WARRANTY THAT COVERS REPAIR, REPLACEMENT, OR ADJUSTMENT OF PARTS DEEMED DEFECTIVE IN MATERIALS OR WORKMANSHIP AT NO OUT-OF-POCKET COST TO YOU.<sup>1</sup>

STANDARD WITH ALL 2003 LINCOLN VEHICLES IS OUR 3-YEAR/36,000-MILE COMPLIMENTARY MAINTENANCE —A NO CHARGE, SCHEDULED SERVICE PLAN CONDUCTED AT 5,000-MILE OR 6-MONTH INTERVALS, WHICHEVER OCCURS FIRST, IN ACCORDANCE WITH YOUR VEHICLE'S SCHEDULED MAINTENANCE GUIDE.<sup>1</sup>

<sup>1</sup>SEE YOUR DEALER FOR MORE DETAILS.

This key signifies the hub of the Lincoln SecurLock™ passive anti-theft system, standard on Town Car models. The electronically coded key prevents ignition bypass by allowing only the correctly coded key to start the vehicle. And the security system is armed once the key is removed from the ignition and disarmed only with the coded key.

WHEN IT COMES TO POWER, LINCOLN ENGINEERS ARE GENEROUS. THE 2003 TOWN CAR COMES EQUIPPED WITH A VERY POWERFUL 4.6-LITER V8 ENGINE WITH A DUAL EXHAUST SYSTEM, CAPABLE OF PRODUCING 239 HORSEPOWER AT 4900 RPM.

ELEGANT 17-INCH ALUMINUM WHEELS SET OFF THE TOWN CAR'S GOOD LOOKS. EACH SERIES OFFERS A SPOKE DESIGN TO COMPLEMENT ITS UNIQUE PERSONALITY. EXECUTIVE AND SIGNATURE SERIES VEHICLES FEATURE 14-SPOKE MACHINED ALUMINUM WHEELS, WHILE THE CARTIER SERIES COMES WITH 9-SPOKE CHROME-PLATED GROOVED ALUMINUM WHEELS.



Town Car offers style and functionality, thanks to the programmable keypad located on the driver's side door. Keyless entry is possible with your personalized identification number that you can easily reprogram.



Available dual driver's seat memory settings allow you to choose one of two different preset positions. For further comfort and convenience, the driver's seat moves back while the steering column moves up—significantly contributing to ease of entry and exit.



Our electrochromic rearview mirror has a rearward-facing sensor that detects glare from the headlights of the vehicles behind you, and dims in proportion to the glare, then clears when the light is no longer detected.



THE NEW BI-DIRECTIONAL ARMREST IN TOWN CAR OPENS TO EITHER THE DRIVER OR FRONT PASSENGER SIDE FOR EASY ACCESS TO STOW OR RETRIEVE PERSONAL ARTICLES.

THIS YEAR, TOWN CAR IS AVAILABLE WITH EXTENDED REAR PARK ASSIST. THIS FEATURE USES BOTH RADAR AND ULTRASONIC SENSORS, ALERTING THE DRIVER WITH VISIBLE FLASHING LIGHTS AND AN AUDIBLE BEEP WHEN CERTAIN OBJECTS ARE WITHIN 15 FEET OF THE REAR OF THE VEHICLE.

STANDARD IN 2003 TOWN CAR MODELS ARE PREMIUM LEATHER SEATING SURFACES, ENSURING A RICH LOOK AND A SUPPLE FEEL EVERY TIME YOU DRIVE.

OUR RACK-AND-PINION, VARIABLE-ASSIST POWER STEERING OFFERS INCREASED STEERING PRECISION AND AN ON-CENTER STEERING FEEL THAT IS ESPECIALLY HELPFUL WHEN DRIVING AT HIGHWAY SPEEDS.

THE MONOTONE DOOR TRIM IS TASTEFULLY ACCENTED IN BOTH SATIN NICKEL AND AMERICAN WALNUT BURL, SUBTLY ELEVATING THE ALREADY REFINED INTERIOR.



An available power moonroof lets in the sun, moon and stars. Or, if you prefer, just a pleasant touch of breeze.



Specially enhanced sensors detect moisture accumulation on the windshield and automatically activate slow or fast wiper motion accordingly. These moisture-sensitive windshield wipers<sup>1</sup> will work in virtually any kind of weather.

<sup>1</sup>Not available on Executive Series.

Lincoln's new coil-over monotube shock suspension offers Town Car drivers an extremely comfortable ride. Together with the outboard rear shocks, they reduce the vehicle's susceptibility to "side skate." And finally the load-leveling air springs in the rear suspension maintain ride frequency under all load conditions for a consistently smooth ride.



Available on all 2003 Town Car models, the Vehicle Communication System includes a Motorola Timeport™ wireless phone. The required Sprint PCS® service plan features voice-activated name or digit dialing for hands-free use. It also enables the satellite-based Global Positioning System, which offers Safety and Security services, Route Guidance and Point of Interest Location information.



HIGH INTENSITY DISCHARGE (HID) HEADLAMPS, AVAILABLE ON SELECT TOWN CAR MODELS AND STANDARD ON CARTIER L, PROVIDE BRIGHTER, WHITER LIGHT AND VIRTUALLY LAST THE LIFE OF THE VEHICLE.

LINCOLN HAS DEVELOPED PANIC ASSIST BRAKING. THIS SYSTEM DETECTS WHEN A RAPID STOP IS BEING MADE AND BOOSTS BRAKING PRESSURE AUTOMATICALLY, TO HELP INCREASE CONTROL AND STOPPING POWER.

AT 21 CUBIC FEET, TOWN CAR'S TRUNK IS SO GENEROUS THAT IT HAS BEEN AWARDED THE BEST IN CLASS TRUNK SPACE. AND STANDARD WITH THE EXECUTIVE AND SIGNATURE SERIES, A POWER PULL-DOWN TRUNK CLOSES APPROXIMATELY THE LAST 1 1/2 INCHES FOR A SOFT TOUCH. THE CARTIER AND CARTIER L ALSO COME STANDARD WITH A POWER TRUNK-AT-A-TOUCH FEATURE, ALLOWING YOU TO OPEN AND CLOSE THE TRUNK WITH JUST THE KEY FOB.



The Dual-Zone Electronic Automatic Temperature and audio controls are conveniently located centrally between the driver and front passenger to ensure equal accessibility and comfort.



## EXECUTIVE L SERIES

In addition to or in place of the Executive Series standard equipment, the Executive L (available only at fleet) includes the following:

CUPHOLDERS—seat-mounted front and rear dual cupholders	TIRES—P225/60R17 BSW black sidewall all-season with 17-inch mini-spare and conventional spare
LIGHTS—orientation lighting	TIRES—P225/60R17 WSW white sidewall all-season <sup>6</sup> with 17-inch mini-spare and conventional spare
REAR SEAT AMENITIES PACKAGE—folding armrest with storage and tissue bins; duplicate audio, climate and front passenger seat controls; auxiliary 12-volt power point outlet; carpeted 1-piece luxury floor mat; rear seat 4-way head restraints; and cigar-sized ashtray in rear doors	VANITY MIRRORS—rear illuminated, conveniently stow away in headliner
	WHEELS—17-inch 9-spoke machined aluminum

## SIGNATURE SERIES

In addition to or in place of the Executive Series standard equipment, the Signature Series includes the following:

EXTENDED REAR PARK ASSIST—in reverse, the system uses both radar and ultrasonic sensors to assess and alert the driver when certain objects directly behind the vehicle are within 15 feet <sup>7</sup> ; with disable switch	RADIO—Alpine® Audiophile Sound System with Digital Signal Processing, subwoofer and Audiophile speakers with 6-disc trunk-mounted radio-controlled CD changer <sup>8</sup> (Premium Signature)
MEMORY SYSTEM—for driver's seat, exterior mirrors and adjustable pedals	RAIN-SENSING DIGITAL WINDSHIELD WIPERS—activates wipers to the appropriate speed and duration when they sense precipitation
MOONROOF—glass power-sliding (Premium Signature)	SEAT—memory settings and easy entry/exit driver's seat
RADIO—Alpine® Audiophile Sound System with Digital Signal Processing, subwoofer and Audiophile speakers with AM/FM stereo/cassette and single CD player	SEATS—heated front seats with 2 temperature settings
	STEERING WHEEL—wood and leather trimmed with tilt steering column and duplicate audio and climate controls
	WHEELS—17-inch 14-spoke machined aluminum

## CARTIER

In addition to or in place of the Signature Series standard equipment, the Cartier includes the following:

HEADLAMPS—High Intensity Discharge (HID) <sup>9</sup>	RADIO—Alpine® Audiophile Sound System with Digital Signal Processing, subwoofer and Audiophile speakers with 6-disc trunk-mounted radio-controlled CD changer <sup>8</sup> (Premium Cartier)
FLOOR MATS—carpeted with monogrammed Cartier logo	SEATS—Premium leather seating surfaces with unique embroidered logo
FOG LAMPS—modular lamps integrated into the front bumper for supplemental foreground and background lighting	TRUNK—full power trunk pull-down that opens and closes using the key fob; includes trunk organizer
MIRRORS—dual power heated exterior mirrors with driver's side electrochromic mirror; with memory	WHEELS—17-inch 9-spoke chrome
MOONROOF—glass power-sliding (Premium Cartier)	

## CARTIER L

In addition to or in place of the Cartier standard equipment, the Cartier L includes the following:

CUPHOLDERS—seat-mounted front and rear dual cupholders	REAR SEAT AMENITIES PACKAGE—folding armrest with storage and tissue bins; heated rear seats; duplicate audio, climate and front passenger seat controls;
LIGHTS—orientation lighting	auxiliary 12-volt power point outlet; carpeted 1-piece luxury floor mat; rear seat 4-way head restraints; and cigar-sized ashtray in rear doors
HEADLAMPS—High Intensity Discharge (HID)	VANITY MIRRORS—rear illuminated, conveniently stow away in headliner

<sup>1</sup>Town Car qualifies as an ultra low emissions vehicle (ULEV). <sup>2</sup>Cartier L and Executive L dimensions. <sup>3</sup>Maximum effective legroom with seatback positioned to back limit. <sup>4</sup>When equipped. <sup>5</sup>Always wear your safety belt and secure children in the rear seat. <sup>6</sup>Available option. Please see your dealer for details. <sup>7</sup>Available option. Not available with Cartier L.

## WEB SITE

For additional information on the Lincoln Town Car or other fine Lincoln automobiles, find us on the Web at [Lincoln.com](http://Lincoln.com).



To ensure we're offering our customers the best service possible, we proudly offer the **Lincoln Personal Consultant**. Just visit our Web site at [Lincoln.com/pc](http://Lincoln.com/pc) and one of our manufacturer's representatives will help with anything from price quotes to product features to arranging a test drive at your local dealer—at no cost or obligation.



**FORD CREDIT**

Ford Credit provides the convenience of one-stop shopping with a variety of simple-to-understand purchase or Red Carpet Lease programs available right at the dealership. For more information, ask your dealer for details, or visit us on the Web at [www.fordcredit.com](http://www.fordcredit.com)

To help minimize the impact of this brochure on the environment, Lincoln prints on recycle-grade coated paper that contains a minimum of 10% post-consumer waste.

Following publication of this brochure, certain changes in standard equipment, options, prices and the like, or product delays may have occurred which would not be included in these pages. Your Lincoln dealer is your best source for up-to-date information. Lincoln reserves the right to change product specifications at any time without incurring obligations. 2003 EPA estimates were unavailable when this brochure was printed. Options shown or described in this brochure are available at extra cost and may be offered only in combination with other options or subject to additional ordering requirements or limitations. Information based on AAMA specifications.

## EXECUTIVE SERIES

All models of the Lincoln Town Car are equipped with the following standard equipment:

ACCESSORY DELAY—for power windows, radio and power moonroof <sup>4</sup>	LOWER ANCHORS AND TETHER ANCHORS FOR CHILDREN (LATCH)—rear, 2 outboard lower and 3 upper tether anchors for child car seats
AIR CONDITIONING—Dual-Zone Electronic Automatic Temperature Control with driver and front passenger controls and sunload sensors that monitor interior temperature; also includes outside temperature display	MAP POCKETS—on front door trim and atlas-sized pockets located on front seatbacks
AIRBAGS—driver and right front passenger front dual-stage and side-impact <sup>5</sup>	MIRRORS—electrochromic (auto-dimming) rearview mirror, and dual power heated exterior mirrors with driver's side electrochromic mirror
ALL-SPEED TRACTION CONTROL—with "off" indicator switch	MOLDINGS—bodyside protection, color keyed with chrome inserts
ANTENNA—concealed radio antenna	OVERHEAD CONSOLE—with digital compass, power moonroof switch <sup>6</sup> , oil life display, Homelink® Universal Transceiver, Vehicle Emergency Messaging <sup>6</sup> , extended rear park assist disable switch and message <sup>6</sup> , map lights, intrusion sensor; expandable for future messages
ANTI-THEFT SYSTEM—intrusion-sensing perimeter anti-theft device that sounds the horn and flashes the headlamps and taillamps when the doors or trunk are tampered with and/or sounds an alarm if motion in the cabin is detected; LED indicator flashes when active	PANIC ASSIST BRAKING—braking system feature senses the intensity of a rapid stop and "assists" by boosting braking pressure automatically
ARMRESTS—bi-directional front fold-down armrest with storage that opens to the driver or right front passenger, full-length door trim with driver and front-passenger seat storage and cover with Satin Nickel push-button latch release, and rear seat center fold-down with cupholders	PERSONAL SAFETY SYSTEM™—dual-stage driver and right front passenger airbags <sup>5</sup> , crash severity sensor, front outboard safety belt usage sensors, driver's seat position sensor, front outboard safety belt pretensioners and energy-management safety belt retractors
BATTERY SAVER—turns off interior lights and headlamps to save battery life	POWER-ADJUSTABLE FOOT PEDALS—brake and accelerator pedals that adjust over 2 inches at the touch of a button
BELT-MINDER™—when activated, a warning light illuminates and a warning chime sounds for 6 seconds every 30 seconds for approximately 5 minutes	POWER POINT—12-volt outlet located under instrument panel
BRAKE SHIFT INTERLOCK—requires brake to be fully depressed before shifting out of Park	RADIO—premium AM/FM stereo/cassette and single CD player with premium sound
BRAKES—power, 4-wheel disc Anti-lock Brake System (ABS)	REMOTE KEYLESS ENTRY SYSTEM—2 key fobs with panic alarm and illuminated entry, theater dimming feature, keyless entry keypad and exterior lighting when autolamp system is engaged
BUMPERS—color keyed front and rear 5 mph impact with bright inserts	SAFETY BELTS—front outboard 3-point restraints with height-adjustable D-rings and pretensioners; 3-point safety belts for all rear passengers, and front center lap belt
CLOCK—analog with chrome chaplets	SEATS—40/20/40 front seat system with Premium leather seating surfaces, front seat pouches, 8-way power driver and front passenger seats with dual power recliners and lumbar support, extended front passenger seat travel, 2-way front head restraints with locking feature
CUPHOLDERS—seat-mounted front and rear armrest-mounted dual cupholders	SECURILOCK™—passive anti-theft system
DECKLID—remote release	SOUND INSULATION PACKAGE—enhanced sound insulation used in the wheelhouse, roof, body pillars, doors and laminated instrument panel to reduce noise intrusion into the cabin
DEFROSTER—rear window	SPEED CONTROL—fingertip controls with tap-up/tap-down feature
DOOR BEAMS—heavy gauge steel anti-intrusion beams with front and rear crumple zones	STEERING WHEEL—tilt steering column, leather-wrapped 2-spoke wheel with duplicate audio and climate controls
DOOR HANDLES—exterior dampened, body color surround with chrome handles	TAILLAMPS—complex reflector with large reverse lamps
DOOR SILL PLATES—Lincoln star with Satin Nickel accents	TIRES—P225/60R17 BSW black sidewall all-season with 17-inch mini-spare (conventional spare available through Ford Customer Service Division)
DUCTS—rear heat and air conditioning	TIRES—P225/60R17 WSW white sidewall all-season <sup>7</sup> with 17-inch mini-spare (conventional spare available through Ford Customer Service Division)
EXTENDED REAR PARK ASSIST—in reverse, the system uses both radar and ultrasonic sensors to assess and alert the driver when certain objects directly behind the vehicle are within 15 feet <sup>7</sup> ; with disable switch	TRUNK—power trunk pull-down and low liftover design
EXTENSIVE CORROSION PROTECTION	VEHICLE COMMUNICATION SYSTEM—Motorola Timeport™ hands-free, voice-activated, digital/analog mobile phone <sup>8</sup>
FLOOR MATS—carpeted front and rear	VISORS—with dual illuminated vanity mirrors and driver's built-in map sleeve
FUEL DOOR—remote fuel filler door release button on driver's door trim panel	WARNING LIGHT SYSTEM—door ajar, EEC-V malfunction alert, brake pressure alert, check engine, low oil pressure, airbags <sup>5</sup> , safety belt reminder, high beams on, ABS, charge system, engine coolant temperature, anti-theft alarm and low fuel gauge
GLASS—solar tinted	WHEELS—17-inch 14-spoke machined aluminum
GLOVE BOX—illuminated with lock	WINDOWS—power with illuminated switches and express-down driver's window
GRILLE—chromed Lincoln waterfall grille	WINDSHIELD WIPERS—2-speed variable intermittent setting; with auto headlamps on
HANDLES—leather-trimmed front- and rear-seat passenger dampened return roof rail assist handles with integrated coat hooks	
HEADLAMPS—quad-beam complex reflector halogen headlamps, cornering lamps, programmable running lamps and autolamp on/off delay lighting system	
HOMELINK® UNIVERSAL TRANSCEIVER—located in overhead console	
HOOD ORNAMENT—stand-up Lincoln star design	
INSTRUMENT PANEL—analog cluster with duplicate digital speedometer, electronic message center with Tripminder® adorned with Satin Nickel and American Walnut Burl accents	
LIGHTS—high mounted rear brake, courtesy front and rear door lamps and integral reflectors; no-dim daytime dash lamps; rear compartment reading lamps; dual beam dome/map lamps; and engine compartment, luggage compartment, glove box and front ashtray lamps	
LOCKS—power door locks, single key-entry/ignition, SmartLock™ anti-lockout system and child-safety locks on rear doors	



DRIVETRAIN

ENGINE	
LAYOUT	Front engine, rear-wheel drive
TYPE	SOHC 16-valve V8 with electronic engine control
DISPLACEMENT	4.6 liter/281 cu. in.
BORE & STROKE	90.2 mm x 90.0 mm/3.55 in. x 3.54 in.
COMPRESSION RATIO	9.4:1
HORSEPOWER	239 @ 4900 rpm (SAE net)
TORQUE	287 lb.-ft. @ 4100 rpm (SAE net)
FUEL DELIVERY	Sequential multi-port electronic fuel injection
FUEL REQUIREMENT	87 octane unleaded (minimum)
COOLING SYSTEM	Fail-safe cooling, variable-speed engine cooling fan
IGNITION	Coil-on-plug integrated electronic ignition system
EXHAUST SYSTEM	Dual, stainless steel
EMISSIONS	ULEV electronic returnless fuel delivery system <sup>1</sup>
TRANSMISSION	
TYPE	4-speed electronic automatic overdrive with torque converter lockup
AXLE RATIO	3:27:1

CHASSIS

BODY		Full-perimeter steel frame with hydroformed front section of rails
SUSPENSION	Front	Independent aluminum Short- and Long Arm, stabilizer bar with links and coil springs
	Rear	4-bar link arms, lateral Watt's linkage, stabilizer bar with links and self-leveling air springs on axle
SHOCK ABSORBERS		Gas-pressurized hydraulic monotube
STEERING	Type	Power, speed-sensitive, variable-assist rack-and-pinion with swing link intermediate steering shaft design
	Overall ratio	18.5:1
	Turns, lock-to-lock	3.0 (Executive, Signature, Premium Signature, Cartier and Premium Cartier)
		3.0 (Executive L and Cartier L)
	Turning circle, curb-to-curb	40.29 ft. dia. (Executive, Signature, Premium Signature, Cartier and Premium Cartier)
		41.5 ft. dia. (Executive L and Cartier L)



WHEELBASE		117.7 in. (Executive, Signature, Premium Signature, Cartier and Premium Cartier)
		123.7 in. (Executive L and Cartier L)
TRACK	Front	63.4 in.
	Rear	65.9 in.
BRAKES	Front	Power-assisted disc, twin-piston calipers, 305 mm vented rotors, Anti-lock Brake System (ABS)
	Rear	Power-assisted disc, single-piston calipers, 295 mm vented rotors, Anti-lock Brake System (ABS)
WHEELS		17-inch 14-spoke machined aluminum (Executive, Signature and Premium Signature)
		17-inch 9-spoke machined aluminum (Executive L)
		17-inch 9-spoke chrome (Cartier, Premium Cartier and Cartier L)
TIRES		P225/60R17 BSW black sidewall all-season (Executive, Signature, Premium Signature, Cartier and Premium Cartier)
		P225/60R17 BSW black sidewall all-season (Executive L and Cartier L)

ACCOMMODATIONS AND DIMENSIONS

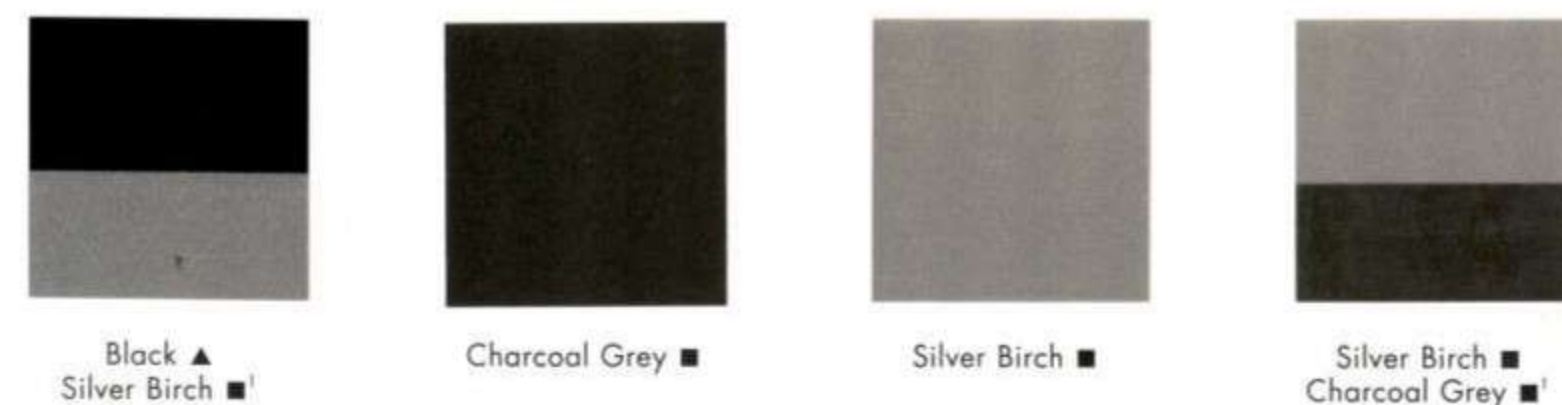
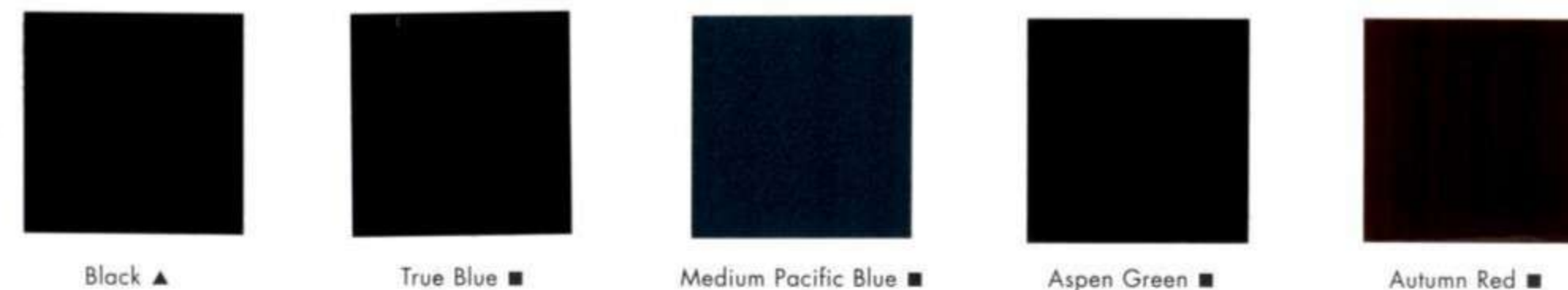
HEADROOM (in.)	39.3 front; 37.6 rear (39.4 front; 37.9 rear <sup>2</sup> )	SHOULDER ROOM (in.)	60.6 front; 60.3 rear (60.6 front; 59.9 rear <sup>2</sup> )
LEGROOM (in.)	45.8 front <sup>2</sup> ; 41.1 rear (45.8 front <sup>2</sup> ; 46.9 rear <sup>2</sup> )	OUTSIDE DIMENSIONS (in.)	58.6 height (58.7 height <sup>2</sup> ); 86.4 width (including mirrors) (86.4 width <sup>2</sup> ); 215.4 length (221.4 length <sup>2</sup> )
HIPROOM (in.)	57.3 front; 58.0 rear (57.3 front; 57.8 rear <sup>2</sup> )		
CURB WEIGHT	4339-4385 lb.	FUEL CAPACITY (gal.)	19.0
CARGO VOLUME (cu. ft.)	21.0	OIL CAPACITY (quarts)	6.0



Wheels shown from left to right: 17-inch 9-spoke chrome finish, 17-inch 14-spoke machined aluminum finish.

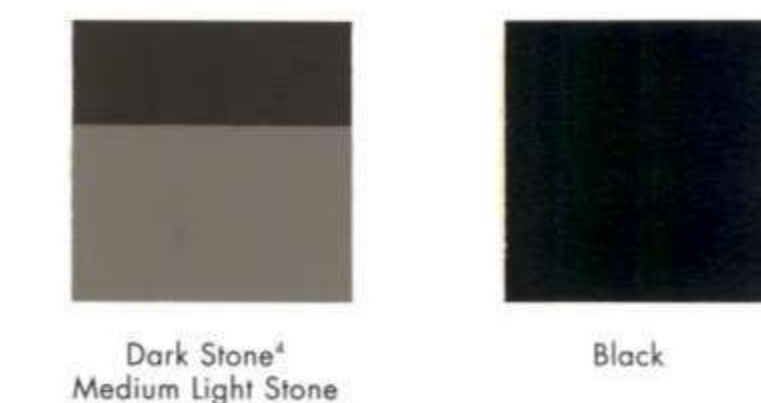


## EXTERIOR COLORS



Vibrant White ▲

## INTERIOR COLORS



## INTERIOR AND EXTERIOR COLOR COMBINATIONS

	Black ▲	True Blue ■	Medium Pacific Blue ■	Aspen Green ■	Autumn Red ■	Black ▲ Silver Birch ■ <sup>1</sup>	Charcoal Grey ■	Silver Birch ■	Silver Birch ■ Charcoal Grey ■ <sup>1</sup>	Light Parchment Gold ▲	Ivory Parchment ▲ <sup>2</sup>	White Pearlescent ■ <sup>2,3</sup>	White Pearlescent ■ <sup>2,3</sup> Light Parchment Gold ■ <sup>1</sup>	Vibrant White ▲
Medium Dark Parchment/ Light Parchment	•	•	•	•	•	•	•	•	•	•	•	•	•	•
Espresso/Medium Light Stone	•	•	•	•	•	•	•	•	•	•	•	•	•	•
Dark Stone/Medium Light Stone	•	•	•	•	•	•	•	•	•	•	•	•	•	•
Black	•	•	•	•	•	•	•	•	•	•	•	•	•	•

Interior fabric and exterior color combinations are not available on all models. Please see your dealer for availability.

▲ Clearcoat ■ Clearcoat Metallic

<sup>1</sup> Additional charge two-tone paint available only on Signature. <sup>2</sup> Tri-coat paint available at no charge on Cartier and Cartier L. <sup>3</sup> Additional charge tri-coat paint on Executive and Signature Series. <sup>4</sup> Top color denotes upper instrument panel trim color.

**DUPONT** The miracles of science™

RESPECTED AS A PREMIER LUXURY SEDAN, THE NEW 2003 TOWN CAR REPRESENTS BOTH THE PAST

AND THE FUTURE OF LINCOLN. IT IS THE

ESSENCE OF  
OUR HERITAGE,

INFUSED WITH MODERN STYLE

AND TECHNOLOGY. DESIGNED WITH A FIRM UNDERSTANDING

FOR THOSE WHO TRAVEL WELL.



  
LINCOLN



**Varsity**  
AUTOMOTIVE GROUP



Ford

Ann Arbor 734-996-2300

Lincoln Mercury

Novi/Wixom 248-305-5300

Two Great Locations To Serve You

[www.varsityautos.com](http://www.varsityautos.com)