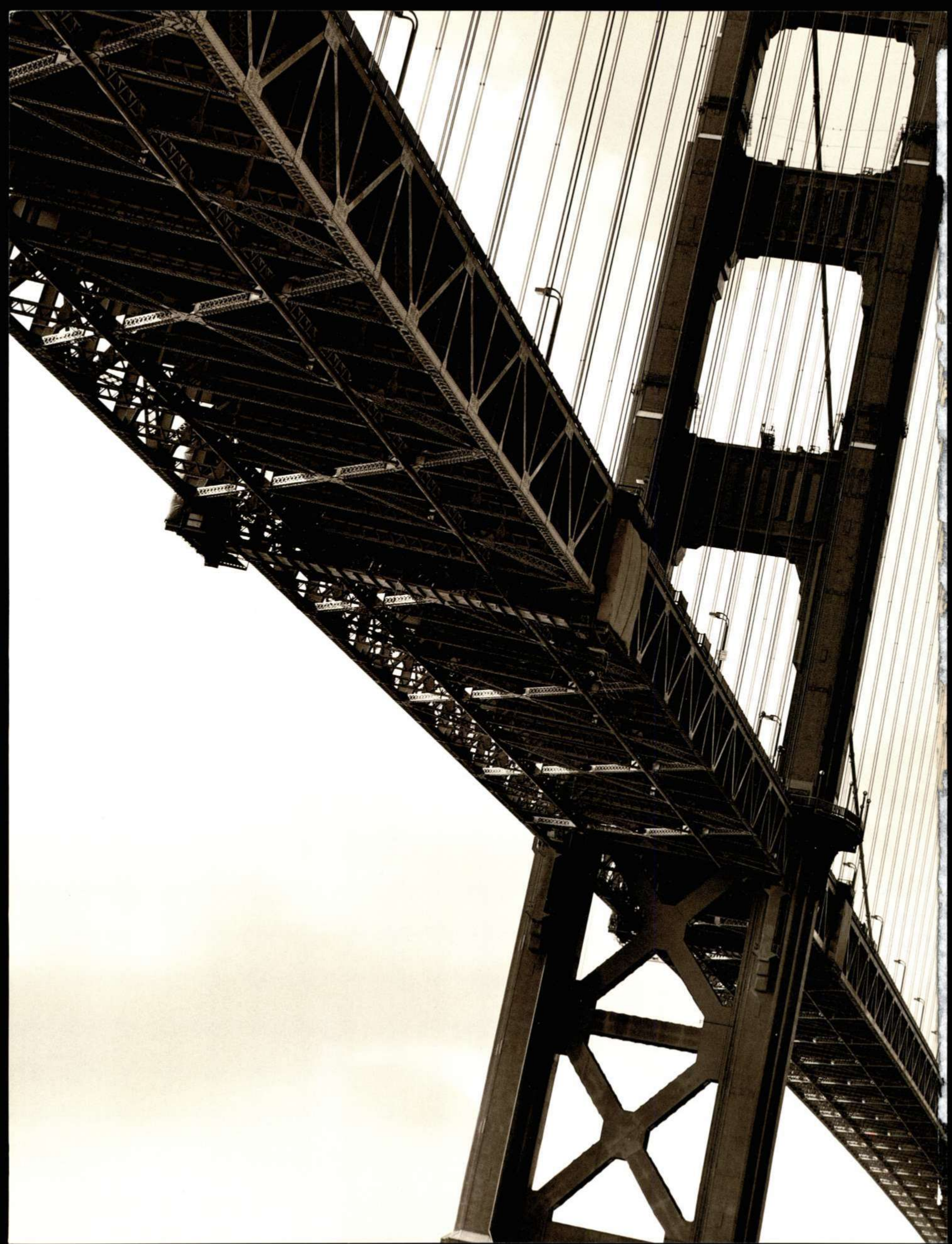




LINCOLN

2000 TOWN CAR



2000 Lincoln Town Car

2. The core values

4. The high drama

8. The high style

16. The inner beauty

18. The inner quality

20. The inner sanctum

22. The features in full

30. The finale





Its sense of style

makes a powerful

statement. The

V8 engine quietly

confirms it. There

is a heritage here.

Sophistication.

Drama. True luxury,

redefined for today.



Business or pleasure,

in town or out, the

Town Car is at ease

anytime, anywhere.

Fashionably formal

for a dinner. Casually

elegant when visiting

friends for brunch

the next morning.





Lincoln Town Car Signature Series in Deep Wedgewood Blue Clearcoat Metallic. Shown with available equipment.





Lincoln Town Car Cartier in Silver Frost Clearcoat Metallic. Shown with available equipment.



Not unlike a fine classic

townhouse interior, the

quality of craftsmanship

is old world, yes.

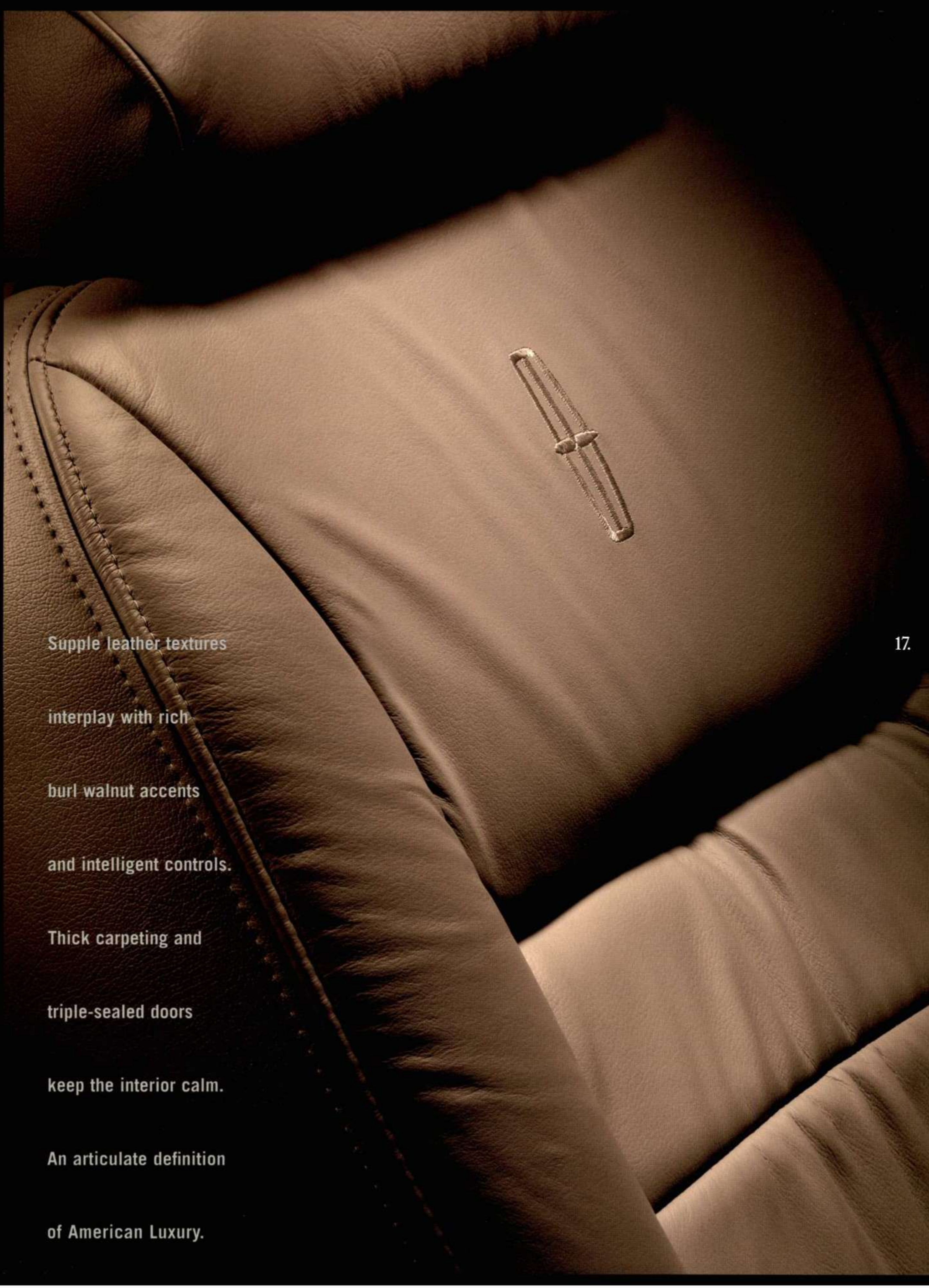
But the look is updated.

More contemporary.

Yet elegantly refined.

With attention to detail

everywhere at hand.



Supple leather textures

interplay with rich

burl walnut accents

and intelligent controls.

Thick carpeting and

triple-sealed doors

keep the interior calm.

An articulate definition

of American Luxury.





It is a favorite room,
welcoming. Inviting.

It offers ample space,
yet places everything
within an easy reach.

Spending time here
is pure pleasure. Ask
any Town Car owner.

You will find the electronic fingertip speed control ergonomically located on Town Car's leather-wrapped steering wheel. Setting your speed can be done without ever taking your eyes off the road.

All Signature Series and Cartier Town Cars have driver-programmable memory seats and mirrors.



Automatic climate control and electronic message center provide comfort and allow driver to monitor data such as outside temperature, average fuel economy, miles-to-empty and average trip speed.

Entering your Town Car involves higher security, thanks to the programmable keypad located on the driver's side door. Keyless entry is possible with your personalized identification number.

Side-impact head/chest airbags add another level of safety for Town Car owners and families. Standard on all models, these airbags help protect an occupant's head and chest in certain side collisions. Used with properly worn safety belts, they can provide driver and passenger with effective protection.¹

¹Always wear your safety belt and secure children in the rear seat.

The available 145-watt Alpine® Audio System provides concert-hall sound through harmonically matched premium speakers. This system allows occupants to enjoy sound from any of fifteen preset radio stations or audiocassettes; radio-controlled CD selection can be made from the optional 6-disc changer.



Elegant 16-inch wheels set off the Town Car's good looks. Each series is fitted with a spoke design to match the vehicle's personality. Clockwise from top left: Snowflake aluminum (Signature); Gear Tooth aluminum (Executive); Chrome gold-accented (Cartier) and Chrome-Tech (Signature Touring Sedan).

Each rear seat passenger gets a conveniently located cup holder in the center armrest for easier access.

A nineteen-gallon fuel tank provides nearly 450 convenient highway miles before refueling is necessary.

In the unlikely circumstance of a complete coolant loss, the fail-safe cooling system will still allow the Town Car to be driven for a short distance¹ by invoking a reduced cylinder firing sequence.

¹Depending on load, ambient temperature, and speed.

No other North American luxury carmaker today goes to the trouble of building a full-length ladder-type frame.² This type of construction, along with rear load-leveling air suspension provides the Lincoln Town Car with additional rigidity and stability. As a result, passenger comfort and certain handling characteristics are improved — especially when the vehicle is fully loaded.

²Excluding other vehicles manufactured by Ford Motor Company.

The SecurILock™ passive anti-theft system uses a specially encoded key to help protect against theft. If a non-encoded key or ignition bypass is detected, the ignition automatically disables itself.

The coil-on-plug integrated ignition system in both versions of Town Car's 4.6L V8 engine provides dependable spark sequences and eliminates the need for spark plug wires. This benefit, combined with platinum-tipped spark plugs, helps make Town Car's 100,000-mile tune-up³ interval possible.

³Under normal driving conditions with routine fluid and filter changes.

Even in bad weather, the Town Car's four-wheel disc anti-lock brakes contribute immeasurably to improved control during hard braking on a surprisingly wide variety of road surfaces.

All-Speed Traction Control helps improve Town Car's handling and steering on slippery surfaces by electronically and automatically modulating engine torque output and rear brake behavior.

A wonderful match for the Town Car's powerful engine, a Watt's linkage rear suspension improves straight line tracking and handling, making the car a pleasure to drive, especially over long distances.

A remote Keyless Entry system comes standard, providing automatic lock activation and a "panic" button to set off the horn and marker lights in an emergency. Added security is also available in an autolamp feature. It keeps your headlamps lit for a preset period after you've switched the ignition off and left the car. As for getting into your Town Car, the programmable keypad on the driver's side door will only unlock the car after your personalized identification number has been entered.

Cartier Town Cars come equipped with heated front seats allowing both driver and passenger to adjust seat cushion temperature to any of five settings, an absolute must for those living in colder climates.

Heated exterior mirrors melt away bothersome ice and snow for better clarity and enhanced safety.

Standard on the Executive and Signature Series Town Cars, a 4.6L 32-valve SOHC, single exhaust V8 provides 200 horsepower for effortless on-ramp acceleration and comfortable long distance cruising. For those choosing the Signature Touring Sedan Package and Cartier, Lincoln Town Cars come equipped with an even more potent 215 horsepower, dual exhaust engine.

An independent short- and long-arm front suspension enables each wheel to drive over road imperfections with minimal influence on other wheels. As a result, the ride is consistent and comfortable.

Drivetrain		
ENGINE		
LAYOUT		Front engine, rear-wheel drive
TYPE		SOHC V8 with electronic engine control
DISPLACEMENT		4.6 liter/281 cu in
BORE & STROKE		90.2 mm x 90.0 mm/3.55 in. x 3.54 in.
COMPRESSION RATIO		9.0:1
HORSEPOWER	Executive and Signature Series	200 @ 4250 rpm (SAE net)
	Signature Touring Sedan and Cartier	215 @ 4500 rpm (SAE net)
TORQUE	Executive and Signature Series	275 lb-ft @ 3000 rpm (SAE net)
	Signature Touring Sedan and Cartier	285 lb-ft @ 3000 rpm (SAE net)
FUEL DELIVERY		Sequential multi-port electronic fuel injection
FUEL REQUIREMENT		87 octane unleaded (minimum)
IGNITION		Coil-on-plug integrated electronic ignition system
EXHAUST SYSTEM	Executive and Signature Series	Single, stainless steel
	Signature Touring Sedan and Cartier	Dual, stainless steel
TRANSMISSION		
TYPE		4-speed electronic automatic overdrive with overdrive lockout
AXLE RATIO	Executive, Signature and Cartier	3.08:1
	Signature Touring Sedan	3.55:1

Chassis		
BODY		Body-on-frame
SUSPENSION	Front	Independent short- and long-arm design
		with ball joints, stabilizer bar and coil springs
	Rear	4-bar Watt's linkage self-leveling air spring suspension and stabilizer bar
SHOCK ABSORBERS		Gas-pressurized hydraulic
STEERING	Type	Power speed-sensitive, variable-assist
	Overall ratio	16.4:1 (on center)
	Turns, lock-to-lock	3.4
	Turning circle	42.0 ft diameter
WHEELBASE		117.7 in.
TRACK	Front/Rear	63.4 in./65.3 in.
BRAKES	Front	Power-assisted disc, 12.4-inch diameter rotors, anti-lock
	Rear	Power-assisted disc, 11.1-inch diameter rotors, anti-lock
WHEELS		16-inch aluminum
TIRES	Executive, Signature and Cartier	P225/60SR16 black sidewall
	Signature Touring Sedan	P235/60TR16 black sidewall

Accommodations and Dimensions			
HEADROOM (in.)	39.2 front; 37.5 rear	OUTSIDE DIMENSIONS (in.)	58.0 height; 78.2 width; 215.3 length
LEGROOM (in.)	42.6 front (max.); 41.1 rear (min.)	FUEL CAPACITY (gal)	19.0
HIPROOM (in.)	57.3 front; 58.0 rear	LUGGAGE SPACE (cu ft)	20.6
SHOULDER ROOM (in.)	60.6 front; 60.3 rear	CURB WEIGHT (lb)	4047-4156

Safety and Security	
▪ Driver and front passenger airbag Supplemental Restraint System ¹	▪ SecuriLock™ passive anti-theft system
▪ Driver and front passenger side-impact head/chest airbags ¹	▪ Heavy-gauge steel side door anti-intrusion beams
▪ 4-wheel disc Anti-lock Brake System (ABS)	▪ Front and rear crumple zones
▪ Remote Illuminated Keyless Entry system with panic button	▪ Brake/shift interlock
▪ 3-point safety belts for front outboard and all rear passengers ¹	▪ Dual power heated exterior mirrors
▪ SmartLock™ anti-lockout system	▪ Rear door child-safety locks
▪ All-speed Electronic Traction Control	▪ Child-safety seat tether anchor

¹Always wear your safety belt and secure children in the rear seat. ²Available on Signature Series and Cartier. ³Available on Executive and Signature Series.

Interior Amenities	
▪ Dual illuminated visor vanity mirrors	▪ Solar-tinted glass
▪ Autolamp on/off delay lighting system	▪ Power door locks
▪ 40/20/40 front seat system with driver/passenger	▪ Concealed radio antenna
▪ 8-way power seats, 2-way front head restraints	▪ Ashtray-mounted cup holders
▪ CFC-free electronic automatic temperature control	▪ Delayed accessory power
▪ with sunload sensor	▪ Analog instrument cluster
▪ Rear seat heat and air conditioning ducts	▪ Electronic message center with Tripminder® and directional compass
▪ Fingertip speed control with tap-up/tap-down feature	▪ Front seatback map pockets
▪ Power windows with driver-side express-down feature	▪ Front and rear carpeted floor mats
▪ AM/FM stereo/cassette with Premium Sound	▪ Courtesy lights and integral reflectors on front and rear doors
▪ Battery saver	▪ Roof rail assist handles
▪ Tilt steering wheel	▪ Automatic parking brake release
▪ Remote decklid and fuel-filler door release buttons	▪ Rear compartment reading lights
▪ on driver's door trim panel	▪ Leather-wrapped two-spoke steering wheel
▪ Leather seating surfaces	▪ Auxiliary 12-volt power outlet

Exterior Features	
▪ Bodyside protection molding	▪ Cornering lamps
▪ Complex reflector headlamps with clear lenses	▪ 5-mph bumpers front/rear
▪ Complex reflector taillamps	▪ Single key entry/ignition
▪ Extensive corrosion protection	▪ Dual power heated exterior mirrors



Options	
▪ Electronic mirrors/compass group	▪ Conventional spare tire with steel wheel
▪ Heated front seats with five temperature settings	▪ Engine block heater
▪ 6-disc radio-controlled CD changer ²	▪ Premium Package: 6-disc CD changer, power moonroof ²
▪ Power moonroof ²	▪ Two-tone paint ³
▪ Integrated voice-activated portable/convertible cellular telephone ²	

Signature Series	
<i>In addition to Executive Series</i>	▪ Easy entry/exit driver's seat
▪ Driver/passenger 8-way power seats with 2-way front seat head restraints and dual power lumbar adjustment	▪ Electrochromic mirrors/compass group
▪ Memory mirrors/driver's seat for two drivers	▪ Leather-wrapped steering wheel with audio/temperature control buttons
▪ HomeLink® programmable garage door opener	▪ 16-inch Snowflake aluminum wheels
	▪ Alpine® Audio System with Digital Signal Processing and 9 speakers


Signature Touring Sedan Package	
<i>In addition to Signature Series</i>	▪ 3.55 axle ratio
▪ P235/60TR16 radial tires	▪ Dual exhaust
▪ 16-inch Chrome-Tech wheels	▪ Perforated leather seat trim
▪ 11.25-inch torque converter	▪ Monochromatic lower bodyside moldings
▪ Revised springs, monotube shock absorbers, and 29.5 mm front and 18 mm rear stabilizer bars	▪ Argent grille
	▪ Black bird's-eye maple wood trim

Cartier	
<i>In addition to Signature Series</i>	▪ Wood- and leather-trimmed steering wheel
▪ Exclusive premium leather seat trim	▪ with audio/temperature control buttons
▪ Heated front seats with five temperature settings	▪ Dual exhaust system
▪ Analog clock	▪ Gold package
▪ 16-inch Cartier chrome aluminum wheels	





Ford Credit provides the convenience of one-stop shopping with a variety of simple-to-understand purchase or Red Carpet Lease programs available right at the dealership. For more information, ask your dealer for details, or visit us on the web at www.fordcredit.com.

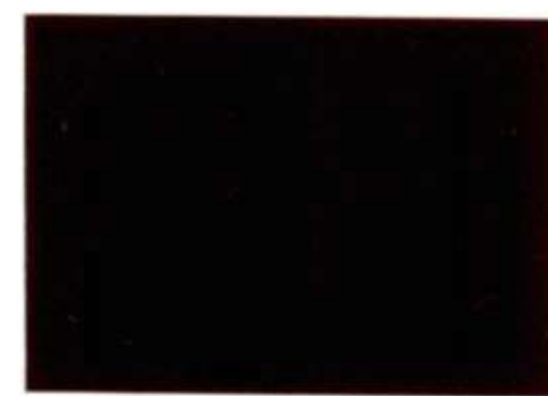
 10% TOTAL RECOVERED FIBER
10% POST-CONSUMER FIBER

For additional information please visit our website: www.lincolncehicles.com

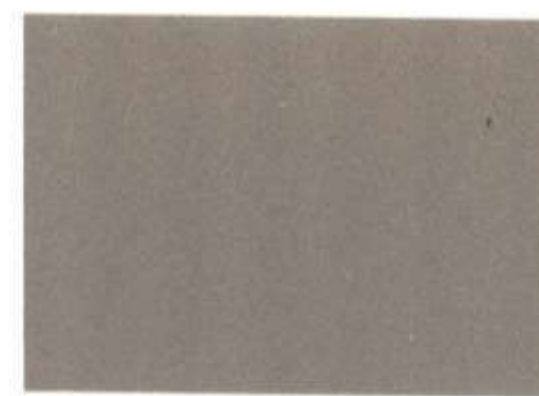
Following publication of this brochure, certain changes in standard equipment, options, prices and the like, or product delays may have occurred which would not be included in these pages. Your Lincoln dealer is your best source for up-to-date information. Lincoln reserves the right to change product specifications at any time without incurring obligations. 2000 EPA mileage estimates were unavailable when this brochure was printed. Options shown or described in this brochure are available at extra cost and may be offered only in combination with other options or subject to additional ordering requirements or limitations. Information based on AAMA specifications.



Paint



Autumn Red Clearcoat Metallic



Light Parchment Gold Clearcoat Metallic



Toreador Red Clearcoat Metallic



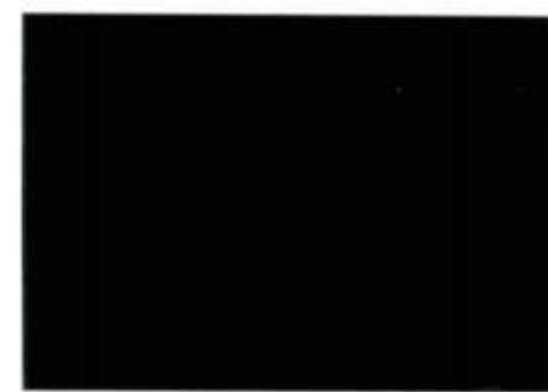
Ivory Parchment Clearcoat¹



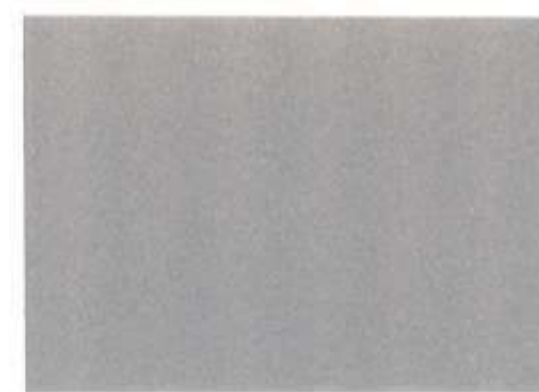
Graphite Blue Clearcoat Metallic



Deep Wedgewood Blue Clearcoat Metallic



Medium Charcoal Green Clearcoat Metallic



Silver Frost Clearcoat Metallic



Midnight Grey Clearcoat Metallic



Black Clearcoat



White Pearlescent Clearcoat Metallic²



Vibrant White Clearcoat



Black Clearcoat / Medium Platinum Clearcoat Metallic



White Pearlescent Clearcoat Metallic / Light Parchment Gold Clearcoat Metallic



Vibrant White Clearcoat / Silver Frost Clearcoat Metallic

Upholstery



Light Parchment



Medium Parchment



Light Graphite



Oxford White



Deep Slate Blue



Deep Charcoal

¹Tri-coat paint available on Cartier Series. ²Extra cost tri-coat paint with Executive and Signature Series.



