



MASERATI

MASERATI GRANTURISMO



IN A TIME WHEN CAR RACES HAD ONLY ONE FORMULA,
MASERATI BEGAN USING THE SAME ENGINES FOR THE OPEN ROAD.

THE GRANTURISMO WAS BORN.





AUTHENTICITY	6
DESIGN	11
COMFORT	16
TECHNOLOGY	24
SAFETY	44
CRAFTSMANSHIP	51
MASERATI SERVICES	66





1. AUTHENTICITY

IT WAS 1947. The original idea of installing a racing engine in a roadgoing car gave birth to the famed A6 1500 GT Pininfarina, the first Maserati “Granturismo.” Ever since, Maserati has led the world in the construction of cars with unmistakable class and thrilling performance—exciting to drive, with a comfortable interior and with an eye toward safety.

60 YEARS LATER, THE DREAM LIVES ON. Designed for daily as well as long journeys, **the new Maserati GranTurismo** has been created for those who appreciate true sophistication, and want their car to deliver an emotional driving experience day after day.

THE MASERATI PHILOSOPHY LOOKS TO THE FUTURE. Excellence is achieved through passion in terms of both technology and hand-crafted quality. This is what it takes to win more than 30 international “Best Car” awards. In the modern, high-tech Modena factory, expertise, professionalism and loving care over every detail make our cars unique. All this is the outcome of the genuine passion that every engineer, technician and specialist uses to design, test and finish every single car as if it were their own.







EUROPEAN VERSION SHOWN



20" OPTIONAL WHEELS SHOWN

2. DESIGN

MASERATI
DESIGN

II

EVERY NEW MASERATI IS ALWAYS STYLED TO BE A UNIQUE SYMBOL OF PRESTIGE. THE LINES, CURVES AND CONTOURS OF THIS GENERATION HAVE BEEN DRAWN BY PININFARINA'S MASTERLY HAND.

With its decisive personality and blend of power and elegance, the new Maserati GranTurismo is a modern day masterpiece. What's more, its style and design are combined with a presence of muscular lines and functional forms. Inspired by the Maserati Birdcage 75th concept car, the exterior appears powerful, with a natural fluidity that starts at the front grille and extends all the way along the sides to the tail lights. This stunning design, with careful attention paid to every detail, is the outcome of lengthy and meticulous aerodynamic studies. The wind tunnel, where the finishing touches were put on the GranTurismo's lines, was a crucial stage in this Maserati's development.





GUIDE TO A UNIQUE STYLE

The imposing and captivating **front** culminates in the oval grille, with the headlights extending horizontally alongside to blend perfectly into the front end. The grille, comprised of vertical concave slats, is adorned with a chrome Trident that appears to be suspended in the middle. The long hood, with the classic “V” shape, has three air intakes on each side in classic Maserati style, which lighten the nose section and give an overall image of dynamism and verve.

The **rear** also echoes the GranTurismo’s sportiness and high-tech soul: the triangular rear lights use 96 LED lights, and a wide aerodynamic diffuser opens out over the bottom part of the bumper.

The **lines** of the interior highlight the unmistakable Maserati style: the distinctive “V” runs right along the top of the dashboard, outlining the traditional oval Maserati clock, and underscoring the exclusivity of this interior design. It also appears as the marque’s signature symbol on a variety of detail features, from the door panels to the rear pillars.

The restrained yet charismatic **detailing** is exquisite: the subtle chrome ring that decorates the buttons on the dashboard and steering wheel, the Trident logo that is hand-crafted on the seat head-rests, the Alcantara™ trim that lines the back of the paddle shifters and the storage compartments, all lined in soft, tactile material. These are just a few more examples of the attention to detail in which Maserati believes so strongly. All this creates an overall image that cannot fail to impress.

The result is a dynamic body and refined interior to match the GranTurismo’s prodigious power and performance.



20" OPTIONAL WHEEL. EUROPEAN VERSION SHOWN





3. COMFORT

ON LONG JOURNEYS OR ON DAILY DRIVES, TRAVEL IS ALWAYS SENSIBLE. PLEASURE IS JUST AS IMPORTANT AS SPEED AND SAFETY. Designed for daily driving as well as long journeys, the Maserati GranTurismo comfortably allows 4 adults to fully appreciate the pleasures of life on-board, surrounded by materials and craftsmanship that are unmistakably Maserati. The spacious seating allows for plenty of room to stretch one's legs, relax, and enjoy the ride in the car's beautifully finished interior.







ALUMINUM COLORED TRIM SHOWN. NOT AVAILABLE IN NORTH AMERICA



A LUXURIOUS, FUNCTIONAL INTERIOR

Both 10-way electrically adjustable **front seats** are designed with a sports configuration of both the seat and the seat-back. Again the classic Maserati “V” shape adorns these body-enveloping seats. Creating a superior level of comfort and supporting the top half of the body and legs when maneuvering curves at high speeds, the seats can keep you warm with three temperature settings. The Easy Entry function of the steering column automatically raises and lowers the steering column to give the driver an easier entry into and exit out of the vehicle.

The **steering wheel** reflects the sporty design and styling of the seats: leather-covered, and ergonomically positioned, it invites the driver to comfortably grip the wheel and maintain control while managing interactive driving and additional vehicle functions. The most often used multimedia functions can be controlled through the buttons on the steering wheel, and are displayed on the 7” screen of the **Maserati Multi Media System**, in the center of the dashboard.

Access to the **rear seats** is simple thanks to the **Easy Entry** system on both driver and passenger sides: the front seats move forward electrically, giving ample room to enter or exit the second row of seats. There are two individual seats for those sitting in the back with the same sporty profile as the front seats and well suited for two adults.

Comfort in the back is enhanced by the center pull-down armrest and two climate control vents. Further examples of the attention paid to rear seat passengers are the two cup-holders located on the back of the center console, the courtesy lights, and the side pockets.

LUXURY IN MUSIC

Those drivers and passengers who are looking for top quality audio systems will be particularly impressed by the **Bose® Surround Sound System**, that has been specially designed and built to match and blend in with the GranTurismo's acoustics. Starting from the idea that top audio quality should be designed into the car from the very beginning, Bose® has created a system that can offer music reproduction on a par with that of the best concert halls in terms of depth, clarity, and tone: 11 speakers delivering both power and clarity for a superior sound.

COMFORTABLE IN ALL CONDITIONS

The **automatic dual-zone climate control** allows those on-board to select different temperature settings and is designed to automatically adjust the intensity of ventilation in relation to the outside temperature. The system is fitted with a defogging sensor: if the glass surfaces start to fog up, this automatically operates to reduce the humidity content of the air.

When traveling over long distances, it is a pleasure to find that the car's interior offers luxury yet the comfort of one's own home; Maserati offers its customers the choice of a vast selection of materials and color combinations, to create an environment that is truly to their own tastes, making each journey a sensual experience.







4. TECHNOLOGY

SOME CARS, LIKE THOSE WHO CHOOSE TO OWN THEM, HAVE AN IMMENSE HEART. The vital pulse of the Maserati GranTurismo comes from its V8, 4.2 L engine, the latest Maserati power unit. The masterly design of this engine generates the power and rapidity typical of the competition engines from which Maserati has always drawn its inspiration. This V8 has been designed to give extreme responsiveness to every input on the accelerator. The new Maserati GranTurismo is a car that can satisfy any desire, but with particular attention to fuel consumption, maintaining a smooth ride, and noise control in the car's interior.





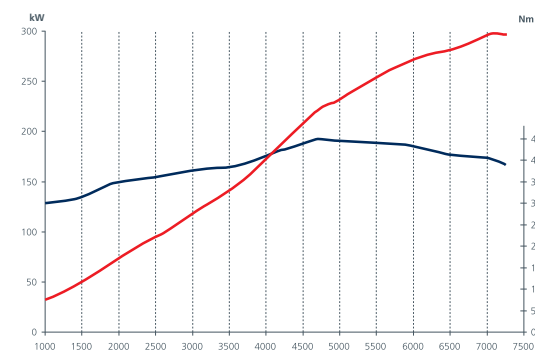
THE V8 SHOWS ITS POWER

Compact, light (just 397 lbs – 186 kg) and quick to respond, the Maserati GranTurismo engine can deliver 405 hp at 7,100 rpm, equivalent to a specific power of 96.4 hp/liter, and a maximum torque of 339 lb-ft (460 Nm) torque at 4,750 rpm, of which 75% is developed at just 2,500 rpm. The result is astonishing: 0-60 mph in 5.1 sec (0-100 km/h in 5.2 sec). The V8's timing is operated by two twin chain-driven overhead camshafts per bank, and four valves per cylinder controlled by hydraulic tappets; the lubrication system features a wet sump, resulting in a smoother running engine.

The powerplant's dynamic performance is constantly optimized by its microprocessor control units (ECUs), which communicate with the other systems through a CAN (Controlled Area Network) line. The **acceleration** provided by the Maserati V8 is immediate, and thanks to the electronic **Drive by Wire** throttle control, the car responds to even the slightest touch of the pedal.

The 6-speed automatic transmission by ZF is designed to provide smooth, relaxed driving, without losing any of the excitement of a great touring car. The winning team of Maserati and ZF is responsible for creating the reliability and refinement that can be expected of this transmission, along with a host of innovations in transmission technology. The transmission is designed to respond with the utmost versatility in every situation, and has the capability to automatically select the optimal operating mode. In the highest-performance mode, for those who want to push the Maserati GranTurismo's sporting soul to its limits, the transmission allows ultra-fast gear changes up to 7,200 rpm, a much higher engine speed compared with its direct rivals. For a more relaxed driving style, the transmission has been designed with ratios that reduce fuel consumption and interior noise at high speeds, maintaining unrivaled comfort and smooth gear shifts.

The Maserati V8 engine sound is unique: deep-toned at low rpms, fearsome in its crescendo, and awe-inspiring at its highest rpms. Four chrome tailpipes provide controlled amplification of the engine note, an absolute thrill for anyone on-board a Maserati GranTurismo.









THE EVOLUTION OF THE TRANSMISSION

The GranTurismo's **transmission** is fitted with auto-adaptive software designed to automatically adjust gear changing to adapt to different driving styles and road conditions. There are 4 different operating modes.

Normal Mode. When driving normally, with steady acceleration, gear changes occur at relatively low revs to achieve the most comfortable ride. If the driving style becomes more sporty while in Auto Normal mode, the gear shifts automatically take place at higher engine speeds to enhance performance.

Sport Mode. Selected via the SPORT button, this is intended for those who prefer a sporty driving style. Gear changing takes place at very high engine speeds and, thanks to a “fuel control” engine program specially developed for the Maserati GranTurismo, gear shifts are 40% faster than in Normal Mode. Automatic downshifts are programmed to provide the lowest gear possible as a curve approaches; this helps maximize control through the curve and provides extra speed when exiting the bend. In this mode one can fully appreciate the exhilarating way the GranTurismo copes with a series of fast corners.

Pressing the SPORT button also changes:

- The way the Maserati stability control system (MSP) operates;
- The stiffening of the electronically controlled Skyhook suspension.

ICE Mode. Selected by pressing the ICE button, this has been developed for conditions where tire grip is poor. Activation of the Auto ICE mode reduces the maximum torque at the wheels, helps prevent starts in first gear, and only allows gear changes at a maximum of 3,000 rpm. This mode helps to provide traction even in the most slippery conditions.

Manual Mode. Manual Mode is available for maximum driving enjoyment and can be selected by moving the gear lever from “D” to the “+”/“-” position. In this case the gears are selected directly by the driver sequentially, either via the gear shift lever or the paddles integrated on the steering column (Active Shifting). The driver can switch from using the gear shift lever to the paddles (leaving the gear lever in the “+”/“-” position) at any time.

The paddle shifter used by Maserati, different from most other similar systems as they are connected to the steering column, are truly user-friendly, thanks to their size and ergonomic positioning.

The **automatic transmission** is located at the front of the car in line with the engine. The **drive shaft** is articulated into two sections, transmitting the drive to the wheels via a self-locking differential (lock percentages: 25% in traction, 45% in release) which helps both to limit slip and to provide optimal traction control.





INNOVATIVE FROM EVERY POINT OF VIEW

The **exhaust system** connected to the V8 engine uses metal catalysts rather than those made of ceramic material, just like on racing engines. Driving a Maserati GranTurismo, the customer is behind the wheel of a car that meets the most stringent current anti-pollution laws, without having to compromise in terms of performance.

The new **load-bearing body** design boasts a mix of materials and technologies for weight optimization and strength. The central structure is made of steel, the hood and front reinforcement member of aluminum, and the trunk lid is constructed using **Sheet Molding Compound (SMC)** technology.

This technology keeps the component weight down and is more resistant to minor damage and corrosion. Its versatility also allowed the designers more room to apply their creative flair.

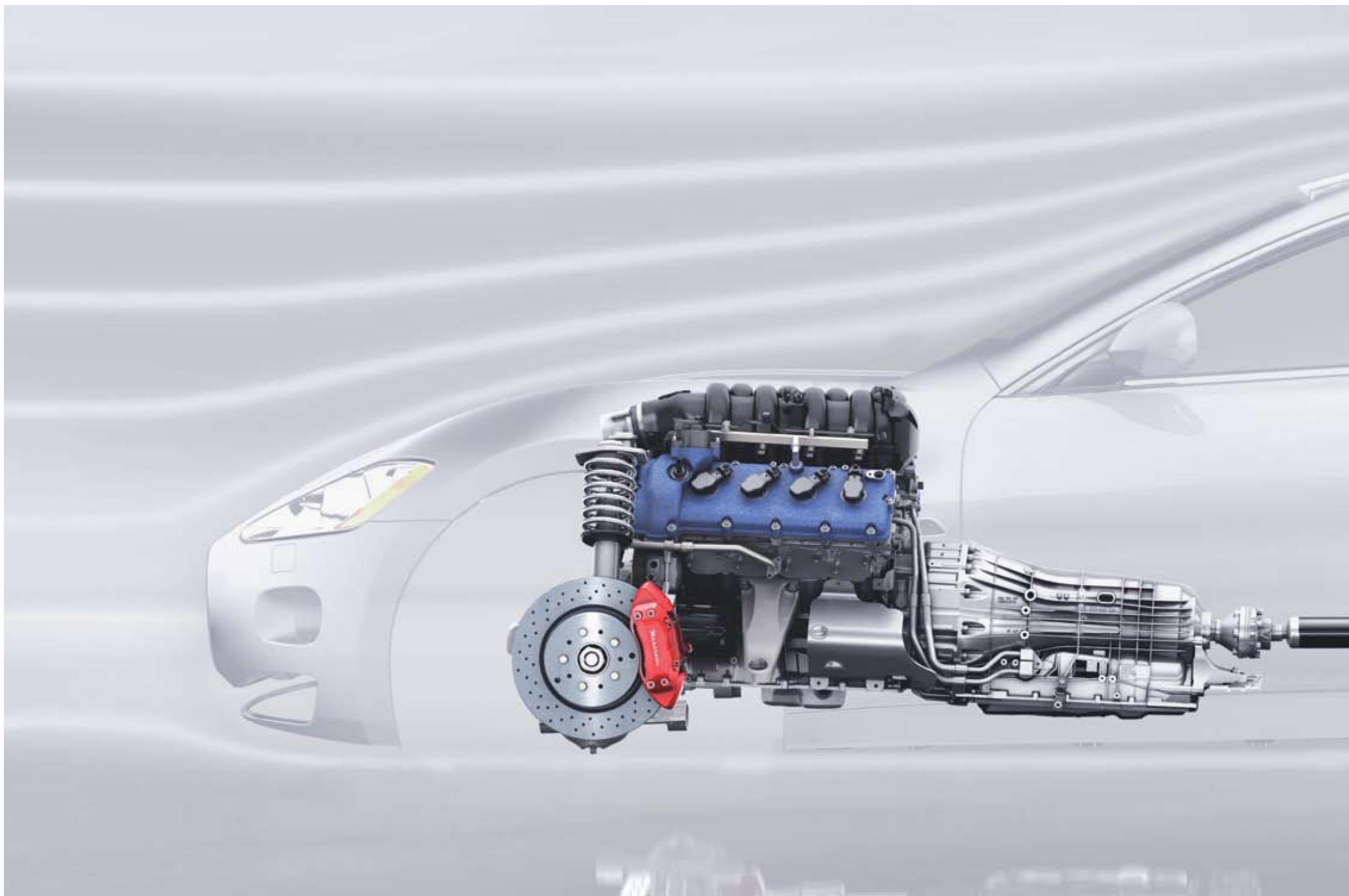
The GranTurismo's extremely rigid body, in conjunction with its sophisticated suspension system, helps to enhance the car's dynamic handling, while also reducing vibration. This optimizes on-board comfort whatever the road surface, and reduces movement of internal components. The **unibody**, constructed in high-strength steel box sections, incorporates a tubular structure in the rear to support the suspension and differential, while in the front it supports the suspension and engine.

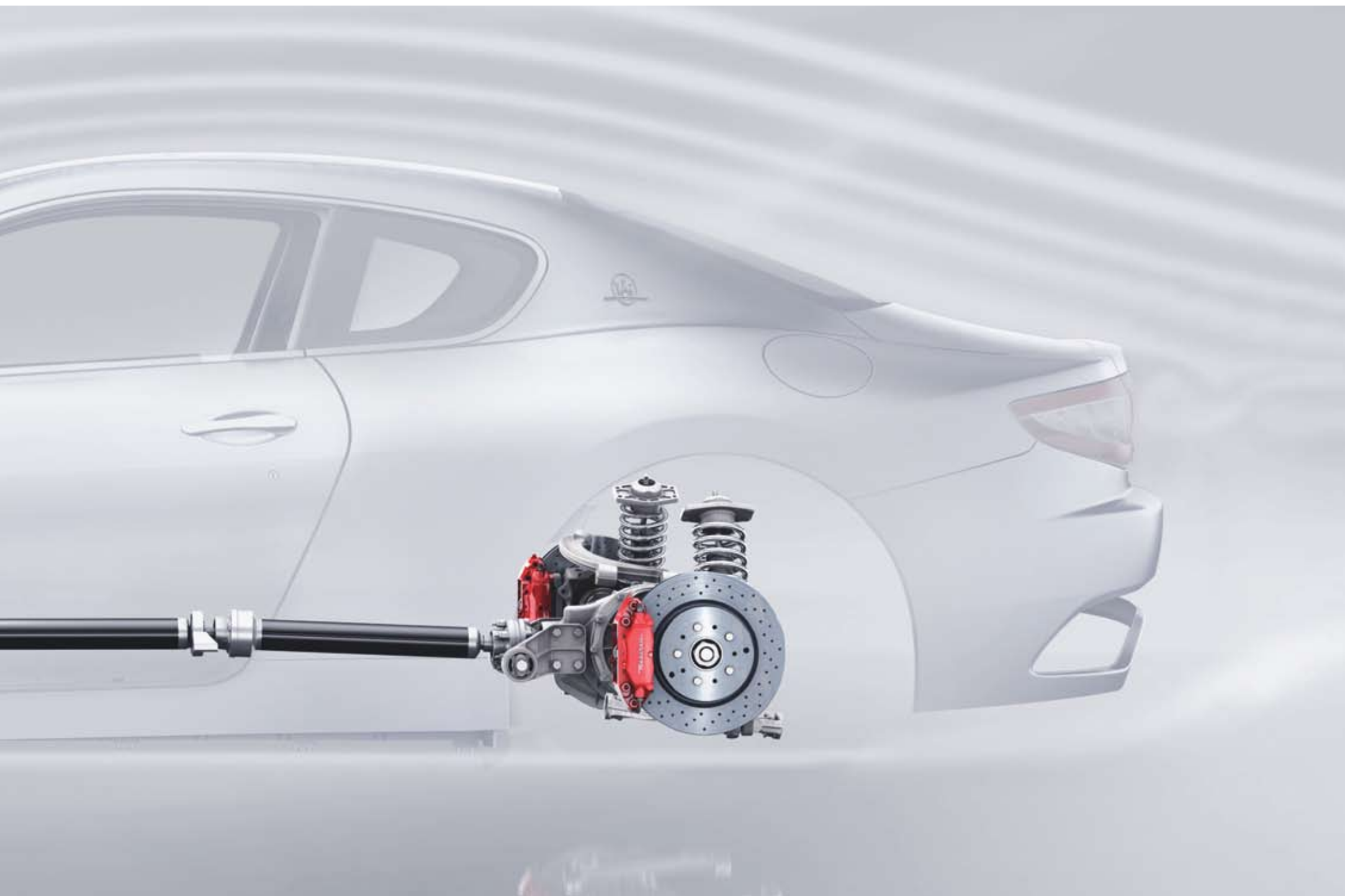
This layout achieves the traditional Maserati rear biased weight distribution (49% front - 51% rear) with a slightly higher load on the rear axle. This makes the Maserati GranTurismo enjoyable to drive, responsive to commands, and enhances its safety. Moving the engine back behind the front axle generates a large number of dynamic benefits. In everyday use, it translates into balanced and predictable performance designed to make driving very easy.

The main benefits are:

- Maximization of traction when accelerating
- Optimization of traction when accelerating on low grip surfaces
- Outstanding road holding (lateral acceleration up to 1 g)
- Exceptionally stable and balanced performance during emergency maneuvers
- Better balance and traction during braking.









Maserati is also justly proud of the GranTurismo's **suspension** and **steering**. The chassis features a front and rear wishbone suspension with forged aluminum hubs and arms in order to reduce weight in the unsprung mass.

The suspension layout benefits from **Antidive** technology, which limits the front from pitching down when braking, and **Antisquat** technology, which limits the rear from pitching down when accelerating.

The Skyhook system, developed in collaboration with Mannesmann-Sachs, is designed to provide automatic and continuous control of the damping, absorbing irregularities in the road. This provides the highest level of on-board comfort, without penalizing performance and sporty handling. This system uses acceleration sensors that register the movements of each wheel and the body of the car: the control unit processes this data and interprets the driving conditions and the road surface, instantly adapting the setting of the shock absorbers accordingly, thanks to their proportional valves.

The Skyhook Suspension system gives the Maserati owner another advantage—it lets you adapt the dynamic behavior of the car to your own driving style and to road conditions, by choosing between two different settings, **Normal** and **Sport** (selected via the SPORT button). The first mode is characterized by soft damping for greater comfort. Alternatively, by pressing the SPORT button you can switch to a more firm setup, with greatly reduced roll angles and load transfer, enhancing the stability of the car. The new Maserati GranTurismo is suitable for everyday use but it is also a true sports car. This is clearly reflected in the sizes of **wheels** and **tires** selected for the car: a balanced combination of road holding and comfort. In the standard configuration, the Maserati GranTurismo makes optimal use of a staggered set-up, fitted with 19" aluminum rims with wider tires at the rear, creating the best possible grip during the quickest accelerations. The optional 20" version, also featuring a staggered set-up, has a look inspired by the wheels on the Maserati Birdcage 75th concept car. The standard tires (front 245/40 R19, rear 285/40 R19), with rigid sidewall, large size, and reduced steering slip angle, increase the car's agility and rapidity of response during intense turns.

The new Maserati GranTurismo has a **Brembo braking system** comprised of four ventilated discs, each with 48 precision perforations (disc diameter and thickness: 13 in x 1.26 in – 330 mm x 32 mm at the front; 13 in x 1.1 in – 330 mm x 28 mm at the rear). The calipers have four pistons of different diameters with ceramic isolating linings; the 4-channel **ABS** has electronically controlled braking distribution (**EBD**) integrated in the Maserati Stability Program (**MSP**).



FLUID MOVEMENT, TOTAL CONTROL

With the new Maserati GranTurismo, visibility is really outstanding. The **Adaptive Light Control** increases the already high level of efficiency of the bi-xenon headlights, thanks to a special rotating mechanism. This function is designed to increase visibility on curves at night: the electronic unit controlling the beams instantly receives information on the steering angle, yaw, and speed of the vehicle and adjusts electrical devices inside the headlights to turn the beams in the appropriate direction. The rear lights feature 96 LEDs, which make the car clearly visible at night. These triangular lights also provide style which, for Maserati, is also top priority.

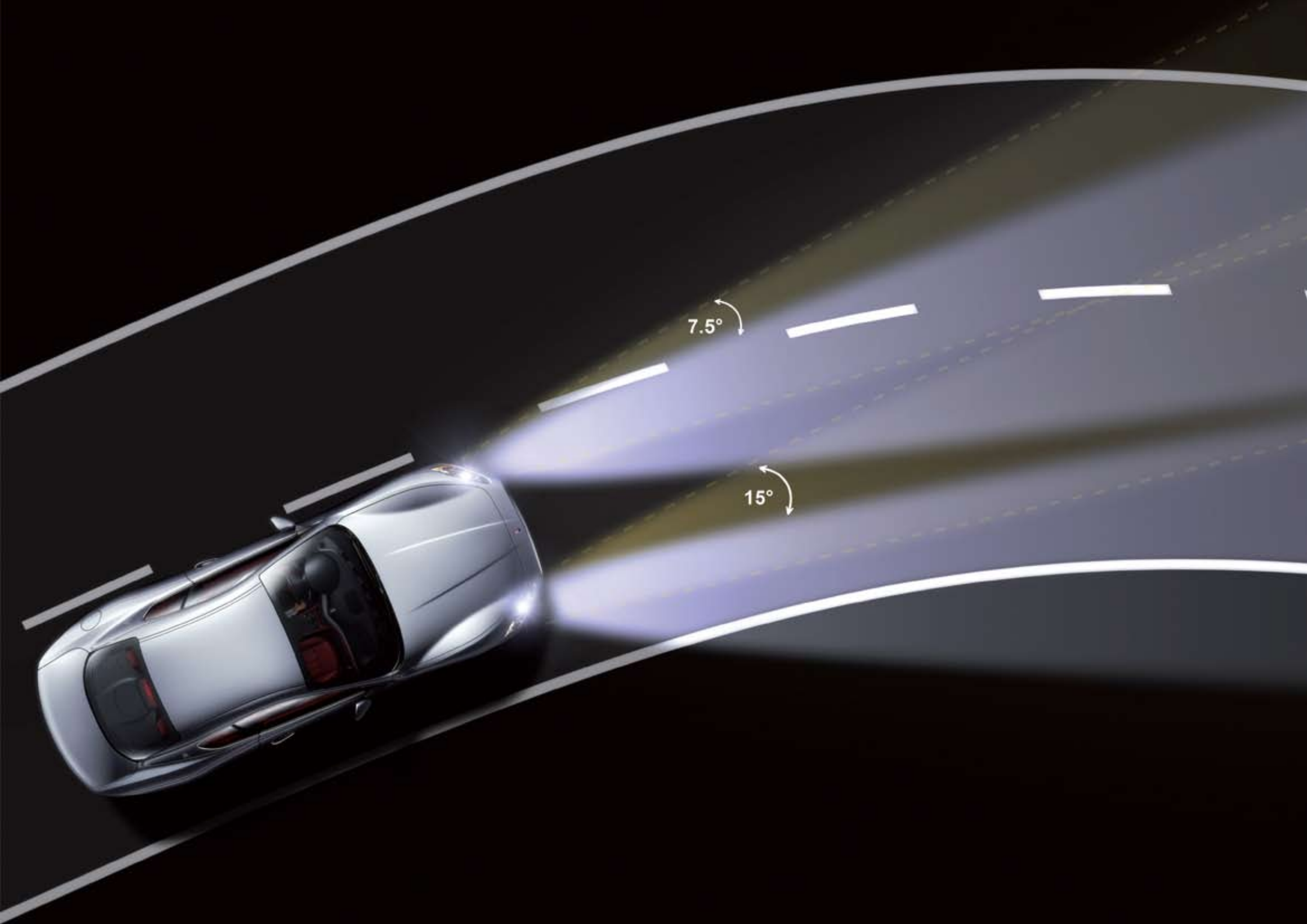
With **parking sensors** incorporated in the rear bumper, parking is made extremely simple; a display on the dashboard will help inform you how far you are from an obstacle while parking.

When traveling at a constant speed you can activate the **Cruise Control** to automatically maintain a pre-set speed. With the Cruise Control activated, the gear changes follow precise and pre-established strategies, taking into consideration the gradient of the road, and calibrated to maintain the maximum comfort for those on-board.

Electrochromic internal mirrors and electrically operated external door mirrors darken progressively as the intensity of light increases to prevent dazzling. And when you arrive home, the **Home Link** remote control allows for up to three frequencies to be programmed directly into the on-board system, for three different automatic garage doors or gates.

As far as security is concerned, the new Maserati GranTurismo is protected by an **immobilizer** with a transponder in the ignition key, and an **alarm system** consisting of:

- An anti-lifting sensor, and volumetric ultrasound sensors
- Perimeter protection
- A siren under the hood
- A 3-button remote control with door lock/unlock and trunk-open functions.





The new Maserati GranTurismo is equipped with the Maserati **Multi Media System (MMS)**: thanks to the large 7-inch color TFT high resolution display in the center of the dashboard, you can display the functions of the single-disc CD player, satellite navigation system (where available), car radio and on-board computer.

The performance of this system is enhanced by 30 GB of internal memory, which is capable of supporting the full map display and loading thousands of music files, the “jukebox” function, thus making it possible to do away with a CD changer. The vast internal memory notably reduces the time required to calculate a route and allows you to upload approximately 400 CDs, which can be copied directly from the Audio CD player.

The **satellite navigation** with its clear color display, and 3D graphic processor makes following a route extremely easy.

The system is simple and intuitive to use thanks to the controls at the center of the dashboard, while the steering wheel buttons give you easy access to the most frequently used functions. And from the perspective of comfort and safety, the audio system and navigation system can be operated through a voice command system to help limit distractions while driving.





5. SAFETY

Beauty and elegance are not enough. Even power, versatility and handling are not enough. **Maserati also strives to produce cars with a high degree of safety engineering.**

Feeling secure and comfortable on the road **ACTIVELY** contributes to the pleasure of driving:

- Electronic power steering is always functional when the car is moving. It provides the right amount of feel at high speeds as well as light and comfortable steering when maneuvering at low speed
- Brembo brakes with four perforated self-ventilating 13 in (330 mm) discs have fixed calipers with four pistons and offer optimal stopping power
- Exclusive Maserati Stability Program (**MSP**) stability control system includes **ABS**, **EBD** and **ASR**
- **EPB** electronic parking brake
- Tire Pressure Monitoring System (**TPMS**) continuously checks the tire pressure
- **Adaptive Light System** turns the headlights in the direction of the car when going around curves.

AND PASSIVELY:

- Unibody built using a new load-bearing body system
 - Front airbags, side airbags integrated in the front seats, and side window airbags integrated in the door panels to provide protection for the passengers in the case of a collision
 - Both front and rear seatbelts have electronically controlled pretensioners
 - An inertia switch deactivates the fuel pumps to reduce the possibility of fire in case of a violent collision.
-





ACTIVE SAFETY

Quick, precise steering control helps improve comfort and safety on-board the Maserati GranTurismo and also provides an enjoyable ride. By using an **electronic interlocking** system, the action of the power steering is adapted to the speed and road conditions, giving the driver a true feel for the road both at high speeds and during low speed maneuvering.

Thanks to an optimal weight distribution for Maserati (49% front – 51% rear), obtained by moving the engine back behind the front axle, the road holding and grip under acceleration are excellent. But the pleasure of powerful acceleration would be nothing without the decisive braking capacity of the Brembo system with four perforated and self-ventilating discs.

The Maserati GranTurismo offers impressive performance in its brakes' capabilities and in their resistance to fade under intense use: the car boasts a stopping distance of just 114 feet from 60 mph to 0 mph (60 km/h to 0 in 35 m), with an average deceleration of 1.24 g.

The **MSP (Maserati Stability Program)**, developed exclusively by Maserati, is a stability control system that is designed to optimize the car's dynamics and safety capabilities on the road. The system has a series of sensors that can detect anomalies in the dynamic behavior of the car and, by using the brakes and engine, the system helps to stabilize the car and helps to provide control.

The MSP is designed to:

- Recognize the onset of skidding and helps stabilize the car in milliseconds (MSP)
- Help prevent the wheels from locking under braking (ABS)
- Distribute the braking force between the front and rear axles to help prevent the rear wheels from locking (EBD)
- To help prevent the drive wheels from spinning on low-grip surfaces (ASR)
- To help prevent the drive wheels from locking when down shifting on low-grip surfaces (MSR).

With the **EPB (Electronic Parking Brake)** on the new Maserati GranTurismo, you can apply the parking brake easily by using an electronic control on the center console rather than a traditional mechanical lever. Aside from replacing the traditional handbrake, the EPB also has a dynamic safety function. If necessary, it can be used when the car is moving: the system, communicating with the stability control (MSP), acts on all four wheels to obtain an immediate braking action (deceleration of 0.5 g), without loss in stability, until the control is released (to be used in emergency situations only or when stopping the car by using the brake pedal is not possible)

Through a set of dedicated sensors, the standard **Tire Pressure Monitoring System (TPMS)** is designed to check the tire pressure continuously. The system displays the tire pressures on the instrument cluster and warns the driver if they drop below a minimum level or if there is a puncture.

To make hill starts easier, the Maserati GranTurismo has a **Hill Holder**, a device which, on inclines greater than 12°, keeps the vehicle braked for just over one second, so the driver can move their foot from the brake pedal to the accelerator pedal without the car rolling back.

As an additional active safety measure, the **Adaptive Light System** turns the headlights in the direction of the car when going around curves.



PASSIVE SAFETY

The load-bearing body helps enhance the safety of the new Maserati GranTurismo; furthermore, the application of the latest constructional technologies makes it possible to optimize the weight balance and performance. The structural part of the body is made of steel, the hood and front strut of the bumper are made of aluminum, while the trunk lid, made using Sheet Molding Compound technology, helps keep the weight of the car down.

The **six air bag system** on the Maserati GranTurismo has four individual sensors in the front and sides of the car and on a control unit located near the center console. The sensors of the two front air bags (both dual-stage) are designed to help control inflation so that it is directly proportional to the force of the impact.

The Maserati GranTurismo also has two **side air bags** integrated in the front seats and two **side window air bags** integrated in the door panels, designed to help provide protection for front seat passengers in the case of certain lateral impacts.

Both the front and rear **seatbelts** have electronically controlled pretensioners and load limiters, designed to help keep passengers in their seats even in the case of sudden deceleration. The seatbelt sensor lets the control unit assess the severity of the collision, taking into consideration whether the seatbelts are fastened or not, and inflates the front air bags accordingly, in terms of rapidity of intervention and inflation pressure.

Furthermore, the rear **Isfix attachments** offer secure fastenings for certain child seats, designed to help protect smaller passengers.





6. CRAFTSMANSHIP

MASERATI
CRAFTSMANSHIP

51

FIRST AND FOREMOST, DRIVING MEANS CHOOSING. Choosing the speed, the route, but also the style of your car. The equipment of the Maserati GranTurismo has been designed to meet almost any type of requirement, whether functional or a question of style. Similar to the traditions of crafting a hand-made suit, your GranTurismo should reflect your individualism and personality. The Maserati GranTurismo redefines the term luxury. No longer do owners have to adapt to the car; it's the car that adapts to the style and requirements of the owner. This is why Maserati offers such a wide range of customization possibilities: a great car only becomes a perfect match when it merges with the character, personality and temperament of its driver.

BEAUTY IN YOUR HANDS

For those who use their car on a daily basis and want the best possible quality of life on-board, there is a wide range of equipment and colors. The starting point is the world-famous **Poltrona Frau® leather** upholstery, which combines traditional craftsmanship and age-old techniques with inimitable Italian style. The hides go through a meticulous selection process, and undergo the most thorough finishing before being used for the interiors of Maserati cars.

The combination of matching interiors is vast, and countless different permutations are possible thanks to the availability of:

- 10 colors of leather (Avorio, Beige, Cuoio, Cuoio Sella, Grigio Ghiaccio, Grigio Medio, Blu Navy, Rosso Corallo, Bordeaux, and Nero)
- 13 colors of stitching (Avorio, Beige, Cuoio, Cuoio Sella, Grigio Ghiaccio, Grigio Medio, Blu Navy, Bordeaux, Nero, Rosso, Bianco, Sabbia and Giallo)
- 3 fine woods (Rosewood, Walnut Briarwood, Tanganyka)
- 5 carpet colors (Beige, Cuoio, Grigio Fumo, Blu, and Nero).

To fully appreciate the unique customization possibilities of the Maserati GranTurismo, visit the innovative car configurator on maseratigranturismo.com

LUGGAGE SPACE - AS INTERPRETED BY SALVATORE FERRAGAMO FOR MASERATI

A more seductive union is difficult to imagine even for the greatest connoisseurs of Made in Italy luxury. Two brands symbolizing absolute exclusivity have come together to create a glamorous Salvatore Ferragamo luggage set, designed for those who travel aboard the Maserati GranTurismo. From the choice of leathers to the sophisticated interior, the utmost care and attention is paid to each detail. On the road, as in life, luxury stands out. The iconic design of the Maserati grille inspires the lines of this exquisite set of luggage. Five adjustable cases suitable for various travel scenarios, designed especially for the trunk of the Maserati GranTurismo: a suitcase, a weekend bag, a beauty case, a garment bag and a dual-function shoe holder with a removable compartment divider. A customizable 'made-to-order' set, offering the choice of two materials and four colors.

Firenze: the class of hand-worked calfskin. A special finish achieved by a specific technique using the palm of the hand, which gives the leather a smooth and shiny appearance. Customizable in dark brown (Testa di Moro) or Maserati blue. **Modena:** a more sporty style. A natural scratch-resistant calf leather, in black (Nero) or aubergine (Melanzana), with refined contrasting stitching.

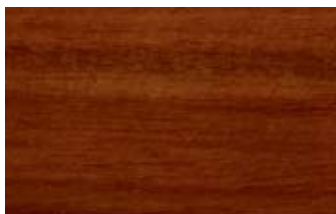




STANDARD AND OPTIONAL EQUIPMENT

55

INTERIOR WOOD TRIM



Rosewood



Walnut Briarwood



Tanganyika

LEATHER COLORS



Avorio



Beige



Cuoio



Cuoio Sella



Grigio Ghiaccio



Grigio Medio



Blu Navy



Rosso Corallo



Bordeaux



Nero

STANDARD INTERIOR TRIM



Smoked Quartz



Alu Grey

Note: With the “DSH5” color choice we suggest that light colors be avoided due to reflections on the windscreen.



COLOR UPON REQUEST FOR MAIN LEATHER AREAS
AT NO EXTRA COST



STANDARD STEERING WHEEL AND GEARNOB IN BLACK LEATHER,
COLOR UPON REQUEST AT EXTRA COST (OPTIONAL STS2)



UPPER AND LOWER DASHBOARD AND REAR SHELF AREAS IN BLACK
LEATHER AS STANDARD, COLOR UPON REQUEST AT EXTRA COST



COLOR UPON REQUEST FOR TRIMMING DETAILS
AT NO EXTRA COST



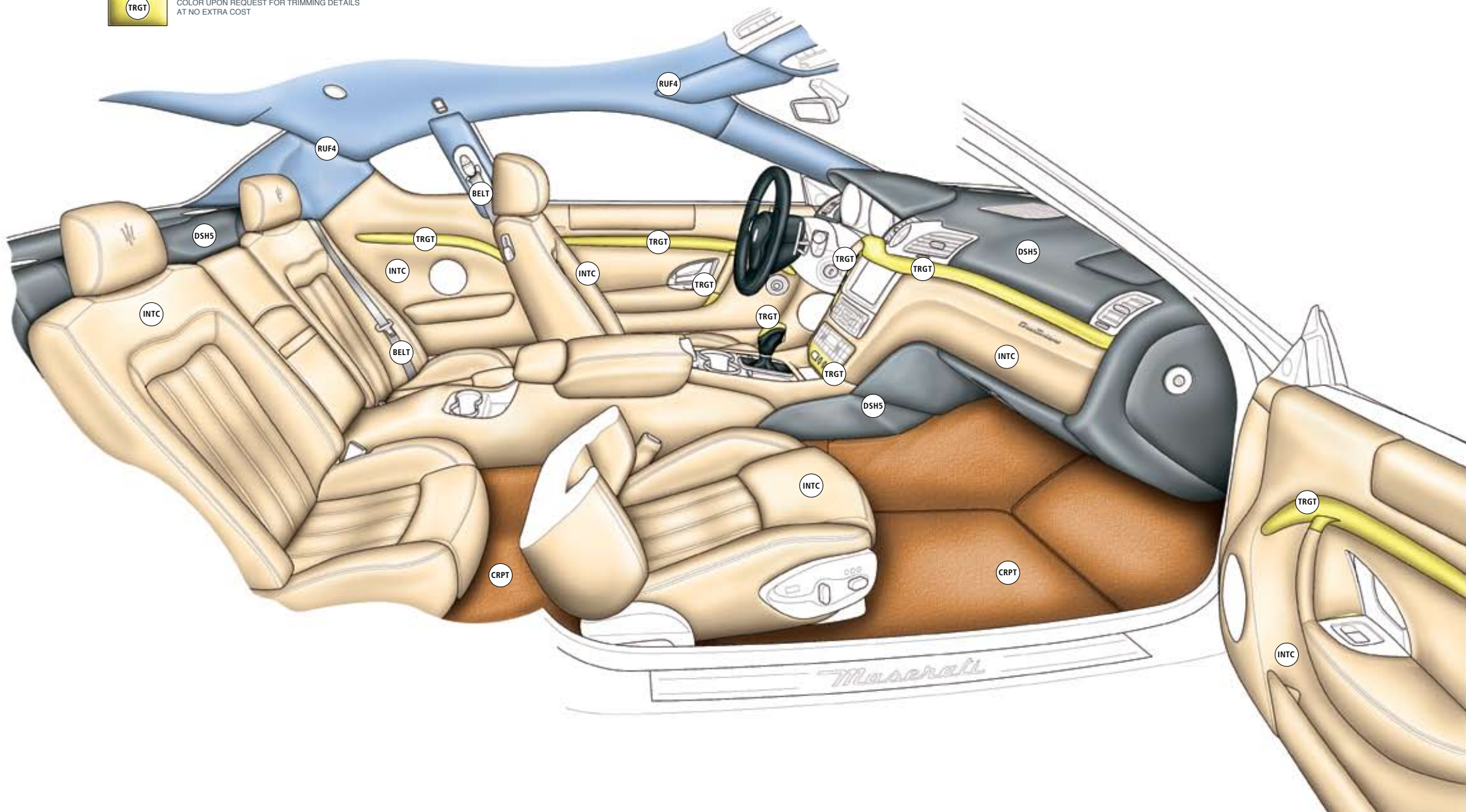
COLOR UPON REQUEST FOR INTERIOR CARPET
AT NO EXTRA COST



COLOR UPON REQUEST FOR HEADLINER CLOTH
AT NO EXTRA COST



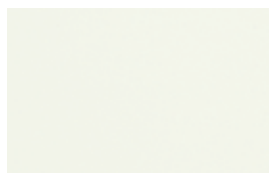
COLOR UPON REQUEST FOR SEAT BELT
AT NO EXTRA COST



STANDARD AND OPTIONAL EQUIPMENT

57

PAINT COLORS



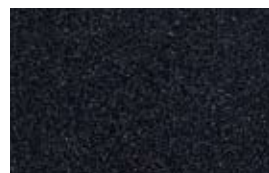
Bianco Eldorado



Grigio Touring



Grigio Alfieri



Grigio Granito



Blu Nettuno



Blu Oceano



Bordeaux Pontevecchio

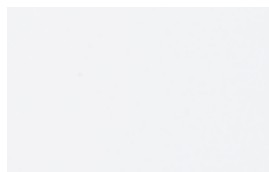


Nero Carbonio



Nero

SPECIAL PAINT



Bianco Fuji



Giallo Granturismo



Rosso Mondiale



Grigio Nuvolari



Grigio Palladio



Argento Luna



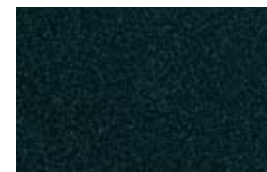
Blu Mediterraneo



Blu Sebring



Blu Malagò



Verde Goodwood

WHEELS AND BRAKES

STANDARD ● OPTIONAL ○



Light alloy wheels - 7 spokes
"V" style (8.5J x 19" front; 10.5J
x 19" rear) ●



Light alloy wheels - 7 spokes "V"
style in Grigio Mercury (8.5J x 19"
front; 10.5J x 19" rear) ○



Light alloy wheels - Birdcage
design (8.5J x 20" front; 10.5J x
20" rear) ○



Light alloy wheels - Birdcage
design in Grigio Mercury (8.5J x
20" front; 10.5J x 20" rear) ○



Brake calipers painted Black ●



Brake calipers painted Silver ○



Brake calipers painted Red ○



Brake calipers painted Blue ○



Brake calipers painted Yellow ○



Brake calipers painted Titanium ○

Skyhook - electronically variable active damping system ●

13 in (330 mm) cross-perforated brake discs - front and rear ●

Speed sensitive power-assisted steering ●

Electronic Parking Brake (EPB) ●

STANDARD AND OPTIONAL EQUIPMENT

59

SAFETY

STANDARD ● OPTIONAL ○

Bi-xenon headlights with headlight washing system	●
Adaptive headlights	●
Automatic headlamp activation	●
Foglamps	●
Taillamps with high visibility LED lights	●
Automatically dimming rearview interior mirror	●
Automatically dimming rearview exterior mirrors (available starting from 1st quarter 2008)	●
Dual stage front air bags, side bags, window bags	●
Front seat belts with pre-tensioners and load limiters	●
Rear seat belts with pre-tensioners	●
Child seat ISOFIX attachments, rear	●
Maserati Stability Program (MSP) - includes:	
- traction control (ASR)	●
- anti-lock braking system (ABS)	●
- electronic brake distribution (EBD)	●
- engine torque control	●
Tire Pressure Monitoring System (TPMS)	●
Tire sealing compound and electric air compressor	●



Bi-xenon headlights with headlight washing system



Adaptive headlights



Six air bags



Automatically dimming rearview interior mirror

EXTERIOR EQUIPMENT

STANDARD ● OPTIONAL ○

Metallic paint	●
Special color paint	○
Front grille with vertical grille bars	●
Chromeline exterior trim	●
Door mirrors - electrically operated, folding and heated	●
Side vents	●
Electric opening assist for trunk lid and doors	●
Saetta logo on C-pillar	●
Lightweight trunk lid construction, with remote key unlocking	●
Maserati script badge - rear	●
Rear parking sensors	●
Twin, dual pipe exhaust system in chrome-plated stainless steel	●
Car cover	○



Chromeline exterior trim



Side vents



Saetta logo



Maserati script badge - rear

STANDARD AND OPTIONAL EQUIPMENT

61

INTERIOR

STANDARD ● OPTIONAL ○

Aluminum sill protectors with Maserati script	●
Instrument dials in Maserati Blue color with white graphics	●
Dashboard-mounted, Maserati-design clock	●
Black three-spoke, multifunction, leather sports steering wheel	●
Maserati “Active Shifting” (paddle shifter)	●
Sport mode setting via sport button (affecting gear change, accelerator response, MSP system)	●
High lateral support front electrically adjustable seats, with separate head restraint - adjustments backrest, height, longitudinal, easy entry, driver's seat lumbar	●
Front seats with comfort pack (driver's seat memories, seat heating, steering column with power height and reach adjustments)	●
Trident logo embossed on head restraints - front and rear	●
Folding front armrest with illuminated storage compartment	●
Folding rear armrest	●
Two front and two rear cup-holders	●
Lockable, illuminated glove compartment on passenger side	●
Storage compartment in center console, front and rear	●
Side storage compartments for rear passengers	●
Rear clothes hook	●
Two air outlets in center console, rear	●



Three-spoke, multifunction, leather sports steering wheel



Dashboard-mounted, Maserati-design clock



Sport mode setting via sport button



Front electronically adjustable seats

ELECTRONIC DEVICES

STANDARD ● OPTIONAL ○

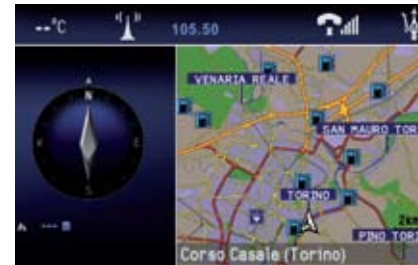
Electronic immobilizer	●
Alarm system (perimeter and volumetric sensing, anti-lift device, electronic immobilizer)	●
Remote key (on/off alarm system, lock/unlock doors, unlock trunk lid)	●
Cruise control	●
HomeLink - Garage door opener	●
Dual zone automatic climate control with two rear air outlets in center console	●
Demist sensor	●
Maserati Multi Media System with 7" in dashboard screen - includes navigation system, RDS tuner, single CD player, 30 GB hard disc drive, voice control	●
Bose™ Surround Sound	●
Rain sensor	●



Dual zone automatic climate control



Cruise control



Maserati Multi Media System with 7" in dashboard screen



Bose™ Surround Sound System

STANDARD AND OPTIONAL EQUIPMENT

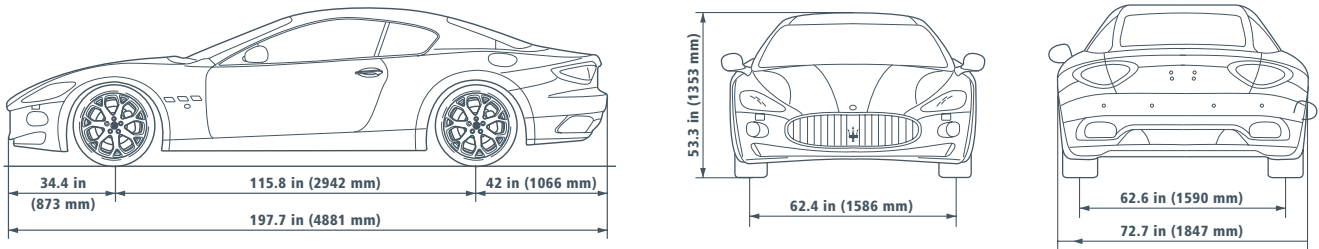
63

UPHOLSTERY AND TRIMS

STANDARD ● OPTIONAL ○

Poltrona Frau™ leather upholstery	●
Dashboard and rear shelf in colored leather	○
Stitching color upon request - steering wheel, gear knob, gear shift leather boot excluded	○
Titanium-look finish ("Smoked Quartz") on selected interior details	●
Aluminum-look finish ("Alu Grey") on selected interior details (no cost optional)	○
Tanganyka wood trim on selected interior details (no cost optional)	○
Rosewood trim on selected interior details	●
Walnut Briarwood trim on selected interior details (no cost optional)	○
Steering wheel, gear knob, gear shift leather boot in black leather	●
Steering wheel, gear knob, gear shift leather boot in colored leather	○
Steering wheel in wood trim and black leather - Tanganyka, Rosewood, Walnut Briarwood	○
Steering wheel in wood trim and colored leather - Tanganyka, Rosewood, Walnut Briarwood	○
Fabric headliner	●





MASERATI GRANTURISMO TECHNICAL SPECIFICATIONS

ENGINE

Displacement	4.2 L (4244 cm ³)
Bore	3.62 in (92 mm)
Stroke	3.14 in (79.8 mm)
Compression ratio	11:1
Max power output	405 hp (298 kW)
Max power output revs	7100 rpm
Max torque output.....	339 lb-ft (460 Nm)
Max torque output revs	4750 rpm
Max rev speed	7250 rpm

PERFORMANCE

Maximum speed	177 mph (7050 rpm)
Acceleration 0-60 mph (0-100 km/h).....	5.1 s (5.2 s)
Quarter mile acceleration	13.4 s
Breaking distance from 60 to 0 mph (100 to 0 Km/h)	114 ft (35 m)

DIMENSIONS AND WEIGHTS

Length	197.7 in (4881 mm)
Width (without side mirrors)	72.7 in (1847 mm)
Width (with side mirrors).....	80.9 in (2056 mm)
Height	53.3 in (1353 mm)
Wheelbase	115.8 in (2942 mm)
Front track	62.4 in (1586 mm)
Rear track	62.6 in (1590 mm)
Front overhang	34.4 in (873 mm)
Rear overhang	42 in (1066 mm)
Trunk capacity	9.2 cu-ft (260 l)
Fuel tank capacity	22.7 gal (86 l)
Curb weight	4145 lb (1880 kg)
Gross vehicle weight	4962 lb (2250 kg)
Weight distribution	49% front; 51% rear
Turning circle	35.1 ft (10.7 mt)

7. MASERATI SERVICES

CAREFULLY BUILT AND METICULOUSLY TESTED. Each Maserati is built in the historic Maserati factory complex in Viale Ciro Menotti in Modena, Italy. Over the last several years the factory has been completely renovated to help ensure the highest production standards and is now amongst the most advanced small series production facilities in the world, combining traditional hand-crafting techniques with cutting edge technology. Each new Maserati, after being thoroughly examined and tested in the engine running-in and diagnostic area where its torque and power output are verified, is put through its paces by our professional test-drivers. Excellence is a matter of pride at Maserati.

4-YEAR LIMITED WARRANTY AND ROADSIDE ASSISTANCE. Confident in its high performance automobiles, Maserati North America covers them with a transferable four year/50,000 mile new car limited warranty. Because daily use includes the risk of road hazards, Maserati North America includes Maserati Roadside Assistance on all new Maserati vehicles sold in the USA and Canada throughout the new car limited warranty period. Available 24/7 toll-free at +1 888 371 1802, the program provides transport to the nearest authorized Maserati dealership if the car cannot be made roadworthy by the responding technician. If overnight warranty repairs are necessary, limited rental reimbursement and travel assistance may also be provided through the program. Ask your local authorized Maserati dealer for more details. (Not currently available in Florida).

CERTIFIED PRE-OWNED AND EXTENDED SERVICE COVERAGE. Maserati 'Trident Discoveries' provides for exclusive Pre-Owned and Extended Service Coverage for qualified Maserati vehicles for one year, up to a total of 90,000 miles as shown on the vehicle's odometer. To enjoy the same type of assistance reserved for new vehicles, a Certified Pre-Owned Maserati must satisfy a range of strict specifications. The Pre-Owned Maserati must be less than 5 years old, must not exceed 90,000 miles, and is subjected to a series of 120 technical checks before being declared Maserati Certified. The certification of a Pre-Owned Maserati also helps ensure that the vehicle has not been involved in any serious accidents, and that the car has undergone all the scheduled maintenance services required by Maserati.

The owner of a new or used Maserati can also purchase the Extended Service Coverage for an additional year past the standard new car limited warranty period. Eligible Maserati models must be less than 5 years old and not exceed 90,000 miles. For complete details of the terms and conditions, and eligible models, consult your nearest authorized Maserati dealer or visit maseratipreowned.com





MASERATI FINANCIAL SERVICES

Maserati Financial Services offers the financing, leasing, and other products necessary to provide performance-minded Maserati customers with unprecedented results. We are passionate about providing the highest quality of financial services available to the Maserati network. Maserati Financial Services offers competitive retail financing for those customers who prefer the benefits of ownership at the end of their contract. With our retail financing program, customers will own their vehicles at the end of the contract and as an additional benefit, there are no mileage restrictions. Leasing allows you to experience all the benefits of the Trident marque with lower monthly payments. We offer a wide variety of closed-end leases from 24 to 60 months. The key to our leasing program is that we fully understand the allure and mystique of the Maserati brand and we appreciate how an automobile renowned for its beauty, engineering and sophisticated luxury can hold its value. Maserati Financial Services offers leasing programs that are as flexible as they are affordable.

THE WEB AND CAR CONFIGURATOR

To discover all the ways in which the Maserati GranTurismo can be personalized, we have created an innovative and unique car configurator. It has been developed to bring your Maserati GranTurismo to life by giving you the chance to personalize many of the vehicle's features. The system has been enhanced with "X-ray" software to make the experience all the more enjoyable and to see inside the car and appreciate all its interior technological elements. Create your own Maserati GranTurismo at configurator.maserati.com, or learn more about this new Maserati model at maseratigranTurismo.com

To browse the entire Maserati range, the services on offer, or simply to see how the company's heritage blends perfectly with modern day living, visit maseratiamerica.com or maserati.com

NEWSLETTER

All owners registered on the site will receive the monthly online Newsletter for regular updates on all the latest news and events. The Newsletter summarizes the latest news from the world of Maserati, highlighting the main events and focusing with greater detail on the most interesting topics.

You can also read the newsletter by visiting the website maseratimonthly.com

FACTORY DELIVERY

You've chosen your Maserati, its color scheme and its accessories. Now at last, it's time to take delivery of your car. The thrill of getting the keys of a Maserati GranTurismo that's been tailored specifically to suit your own personal style is hard to match. And now you can experience that very special moment at the Maserati factory itself. Direct personal delivery at the Maserati factory will also include a tour of the production line where you will see firsthand just how Maserati are built. For further details and to book your own personal delivery, contact your nearest authorized Maserati dealer.

FACTORY TOUR

Discover how the Maserati cars are born, learn the secrets to their craftsmanship, fully understand their engineering and really become part of the Maserati family. The tour is by appointment only and reservations can be made at any Maserati dealership. For more information please contact us by writing to: maseratiexperience@maserati.com

MASERATI EXPERIENCE

For those who truly wish to discover Modena, its culture, history and cuisine. The Maserati Experience program ("Maserati One Day" or "Maserati Deluxe" packages) introduces you first hand to the Maserati world: Modena, with its works of art, its history and its fine cuisine.

You can tailor your Maserati Experience to your personal taste by combining a variety of activities:

- Panini Museum and/or Stanguellini car Museum visit
- Guided tour of the town
- Guided tour of a traditional balsamic vinegar establishment, with tasting
- Guided tour of a winery, with tasting of local wines
- Cooking school
- Day at the "Modena Golf & Country Club"

...and much, much more. For more information please contact us by writing to: maseratiexperience@maserati.com





MASERATI COLLECTION

Now you can reflect your car's timeless style and elegance with a completely updated collection of clothing and accessories. The Collection, conceived and produced in line with the Maserati philosophy of excellence and fine design, comprises six product lines:

- Pure for clothing
- Executive for accessories and leather goods
- Leisure for leisure items
- Gift for elegant gift ideas
- Passion for models and publications
- MC for the more sporty clothing and accessories line.

The exclusive Maserati Collection products are available from all official Maserati Dealers, from the just opened Maserati Store at the Maserati Headquarters in Modena and from the Maserati Showroom on Park Avenue at 55th Street in New York City.

Call +1 212 593 2080 to place your order by phone or e-mail the Showroom at: maseratishowroom@maseratiusa.com

Items can also be purchased directly from your home, from the on-line Trident store maseratistore.com

CUSTOMER EVENTS AND MASERATI CLUB

The owners of Maserati cars from every era can fully enjoy the pleasure of owning and driving a Trident sports car by taking part in a calendar of events exclusively for Maserati Club members. The Maserati Club provides the link between the past, present and future of the Modena constructor. The association is led by personalities who have made a fundamental contribution to the growth and promotion of Maserati in all eras, starting from the President, Maria Teresa de Filippis, the first woman F1 driver and today a proud supporter of the Trident. Becoming a Maserati Club member is simple, just like the joy of sharing a deep passion for Maserati cars.

On joining the main Maserati Club you will receive a silver membership card bearing your personal information, and a welcome kit with a cap, a polo shirt, a pair of leather Maserati driver's gloves and a number of Club stickers.

MASTER MASERATI DRIVING COURSES

A unique opportunity that allows clients and potential customers to experience the thrill of being behind the wheel of Maserati models with the support of a highly professional staff and the latest equipment. The Master Maserati Driving Courses are a terrific way to experience the race track under a supervised environment. The courses are designed to teach how to properly handle a Maserati while still pushing and controlling the powerful sports car to its limit. The Courses take place at the Varano de' Melegari Circuit, located near Parma, Italy (a few miles from the Maserati Headquarters), a circuit that puts technical skills to the test and is also equipped with special driving instruction features, under the technical direction of the former F1 driver Ivan Capelli and the constant supervision of a team of professional instructor-drivers.

Master Maserati courses include:

MASTER GT: A two-day all-inclusive package spent behind the wheel of the various Maserati models. A thrilling, intensive training course that introduces participants to a sequence of exciting dynamic phases. It includes driving sessions on the circuit with a variety of procedures (bend trajectory technique with instructor in the car, acquisition and analysis of telemetry data, driving with pace-car) and practice controlling the car in different simulated road surface conditions (quick direction changes, controlled skid and braking techniques).

MASTER MASERATI RACING: An intensive one-day course spent behind the wheel of the Trofeo and GranSport models, the Master Maserati Racing option takes the racing-driving techniques studied in the Master GT course to their highest level. The course, designed to provide an extremely professional service and cover the latest techniques, allows participants to test-drive the cars that compete in the Trofeo Championship on the track.

For more information and registration, please contact your nearest authorized Maserati dealer or: tel. +39 0525 55 11 38 | info@mastergt.it | fax: +39 0525 55 11 40 | maseratiamerica.com



©2008 Maserati North America. All rights reserved. The illustrations and texts contained in this brochure are based on the information available at the time of printing and do not contain a description of specific characteristics of the car by the Manufacturer. Some models, equipment and accessories may not be available or may only become available after the car's launch on the market. Maserati reserves the right to modify colors, designs and technical features at any time and without forewarning. Contact your authorized Maserati Dealer for further details.

Gran Turismo



WWW.MASERATIAMERICA.COM · 1-877-MY MASERATI

MASERATI NORTH AMERICA, INC. · 250 SYLVAN AVENUE · ENGLEWOOD CLIFFS, NJ 07632