



MASERATI

GHIBLI







MASERATI. STYLE, LUXURY AND ELEGANCE

Every Maserati is like a work of art, its perfection expressing the marque's proud history: unmistakable styling and technological innovation, enhanced by the experience and success of the Maserati Corse racing team. Maserati means passion, dedication and the eternal quest

for perfection. It is also a key part of Italy's long and illustrious automotive tradition. A combination of Italian craftsmanship and groundbreaking technology creates cars in which performance can be experienced to the full for the ultimate in motoring pleasure.







MASERATI GHIBLI. THE ABSOLUTE OPPOSITE OF ORDINARY



The joys of driving a high performance, prestige sedan are no longer just for special occasions: the Maserati Ghibli is a unique combination of style, performance, sports handling and comfort that is designed to make inspirational

motoring an everyday experience. In developing the new Ghibli, Maserati has drawn on all its considerable experience in automotive design and engineering to create a unique and truly exceptional car - thrilling to drive,

stunning to behold, and luxurious in the extreme. A responsive V6 engine, advanced technology and beautifully crafted, high quality interior make the Ghibli stand head and shoulders above its rivals in the segment.









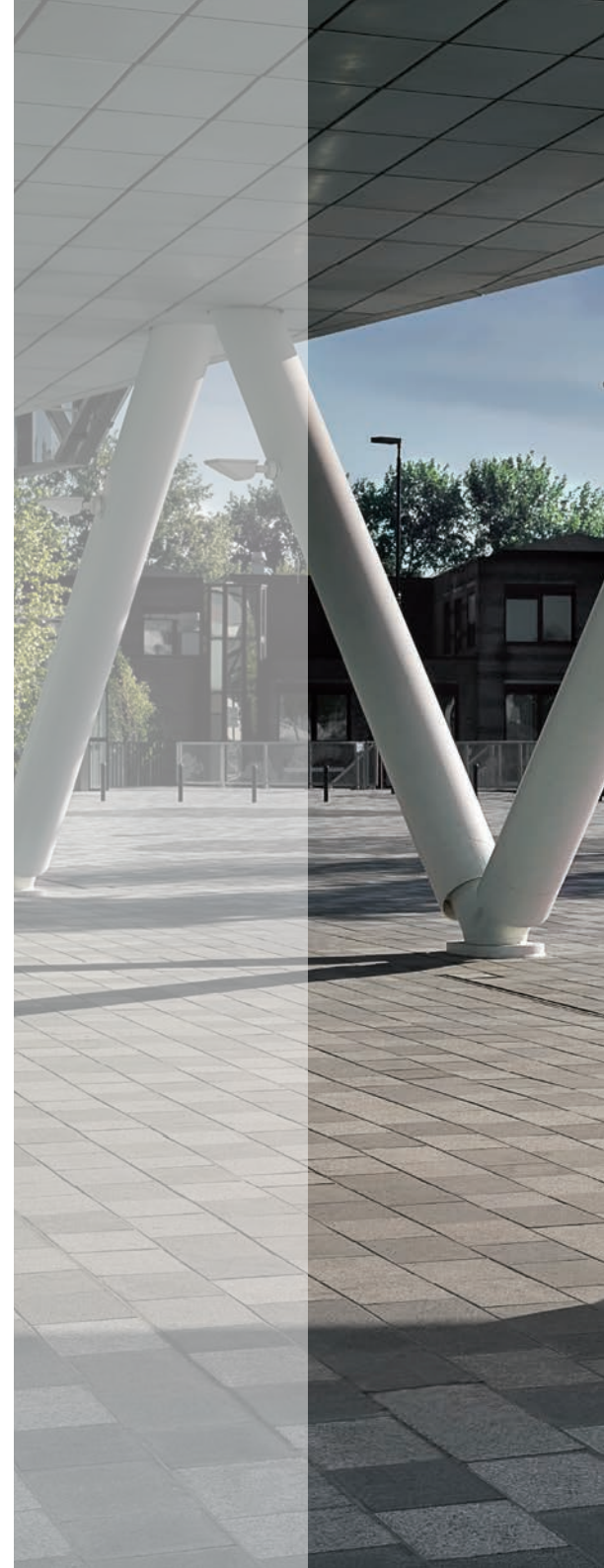




A UNIQUE FUSION OF ELEGANCE AND SPORT


The Maserati Ghibli is a masterpiece of design, with an emphasis on both elegance and sport. Just like the first Ghibli of 1967 that was designed by a young Giorgetto Giugiaro, its graceful lines and perfect proportions make an immediate statement of style, sophistication and effortless power. What makes the Ghibli's sleek and flowing lines so dramatic are the front and rear wheelarches, which

merge into a single central form to create a breathtakingly beautiful silhouette. The front is dominated by the distinctive Maserati grille, with concave vertical fillets inspired by the current GranTurismo and the A6 GCS Berlinetta, a famous icon from the past. The matt black finish of these features contrasts with the chrome surround and the large Trident logo in the center.









The grille's traditional oval shape becomes more rectangular and narrows at the top, where it meets the aggressive front headlights, which make skillful use of LED daytime running lights to emphasize the car's powerful persona. Continuing along the side, past the three 'signature' air vents behind the front wheels, two curved lines add a little visual intrigue before merging and giving way to the muscular rear end. The triangular C-pillar with the iconic Saetta logo in the spotlight and the frameless door windows make the Ghibli look like a sleek and agile sports coupé, even though its length and wheelbase are among the longest in its class.

The tapered design of the rear is the natural continuation of the cabin, while the two LED taillights provide continuity with the wheelarches. Its sporting stance is enhanced

by the twin exhaust tailpipes and the extensive selection of different wheels available - from 18-inch up to the optional 21-inch alloys with the Trident logo integrated into the spokes.



The Maserati Ghibli's unique personality is also expressed in its luxurious cabin. The seats are upholstered in soft leather, which can also be specified for the dashboard and doors in dual color combinations for an interior look ranging from sporting to elegant. The leather's stitching is exquisite, reflecting

the very finest traditions of Italian craftsmanship.

The smooth lines of the dashboard surround the occupants with an atmosphere of opulence: two side panels converge in the center, drawing in the top section that features the traditional Maserati clock with its blue face and aluminum detailing.











In the middle of the dashboard, the large 8.4-inch display of the Maserati Touch Control is the access portal for the very latest in-car entertainment system, and provides user-friendly control for most of the on-board devices. Other functions are then controlled by a cluster of driver-oriented buttons on the central tunnel beside the gear lever. The simple

and striking instrument panel is similar to that of Maserati's new flagship, the Quattroporte. The large speedometer and rev counter have elegant white backlighting and are separated by a 7-inch TFT display that shows the car's dynamic data. The ergonomic, leather-clad steering wheel features controls for interacting with the main multimedia functions.

Behind this are the optional gearshift paddles, with an elegant brushed aluminum finish. The Maserati Ghibli combines a dramatic presence and unmistakable Italian style with impressive amounts of space. While enhancing the elegance of the car's lines, its long wheelbase provides occupants with one of the roomiest interiors to be found in any executive sedan.



The precision of the Trident logo that is embossed on the headrests is a clear indication of the incredible care lavished upon the seats. Their wraparound form underlines the interior's sporting look while delivering the highest levels of comfort. The soft leather used for the upholstery has a natural texture that makes it extremely pleasant to the touch and is available in a variety of colors. The fully electric front seat adjustment system on the Ghibli S Q4 (available as an option on the Ghibli) makes it easy to achieve the perfect driving position by adjusting the height, reach and seatback angle. It also includes four different lumbar support settings.



The system is then able to memorize two settings, which include the seat configuration, the steering wheel and door mirror positions. The rear bench seat can accommodate up to three passengers and features a fold-away central armrest with two cup holders and a storage compartment with a USB charger and a 12V socket. The two seats on either side are modelled on the design of the front seats to deliver exceptional comfort and lateral support. The bench seat can then be partially folded down for even more trunk capacity. Heating for the rear seats is available as an optional extra.











THE MASERATI GHIBLI RANGE. EVERYDAY ENJOYMENT

During the development of the Ghibli, one of the main aims of its designers and engineers was to recreate the dynamism and excitement of past Maserati automobiles.


They have achieved this in style with the capable 345 HP (350 CV) Ghibli

and the potent 404 HP (410 CV) Ghibli S Q4 with intelligent all-wheel drive. Everyday driving has never been more rewarding – even for the most demanding customers who choose a Maserati Ghibli.





MASERATI GHIBLI. POWER AND EFFICIENCY



At the wheel of the Ghibli, the driver enters a whole new dimension of luxury, refinement, power and exhilaration. According to one's mood, the car delivers relaxation or excitement in equal measures. On a long highway journey, there's the opportunity to sit back and enjoy the sumptuous surroundings in total tranquility, whereas on a fast, winding road the Ghibli displays its other nature, responding instantly and

producing the kind of performance for which Maserati is world renowned. At its heart is Maserati Ghibli's Twin Turbo V6 engine designed to achieve the lowest possible fuel consumption and CO2 emissions, while at the same time delivering extremely sporty performance. Thanks to innovations in engine technology that have been specially developed by Maserati, Ghibli drivers can relax in the knowledge that while enjoying smooth

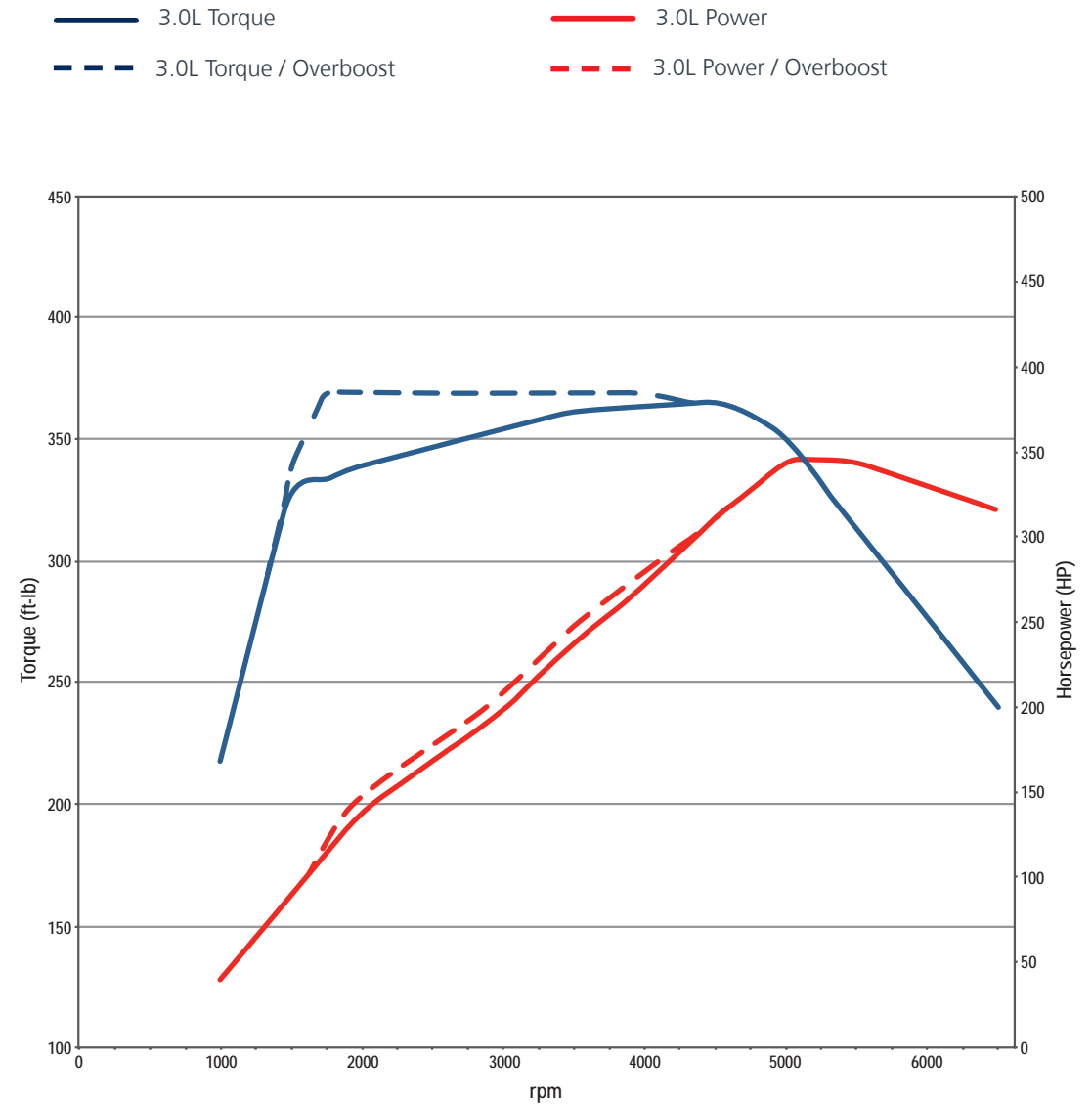
and economical driving, they also have access to immense amounts of power. The Ghibli's power and torque figures are a clear indication of its sporting prowess: 345 HP (350 CV) at 5,250 rpm and 332 lb-ft at 1,750 rpm. When the driver presses the Sport button on the transmission tunnel to activate the overboost function, the engine's torque soars to a remarkable 369 lb-ft over a broad range of 1,750 to 4,500 rpm.

This six cylinder engine is similar to the more powerful Ghibli S Q4 version, but with specially adapted camshafts and injectors, different turbo mapping and a revised electronic control system. These modifications cut fuel consumption even further, but with little sacrifice in the way the car responds to the accelerator. Other features of the V6 engine remain unchanged. The twin-turbo system has two intercoolers, both mounted low down and some distance away from the main radiators to ensure a



constant flow of cold air. With an aluminium alloy crankcase and cylinder heads, both units are extremely compact, keeping the weight of the car down and ensuring the best possible responsiveness and handling. Placing the turbines in the exhaust manifolds has enabled Maserati's engineers to develop a compact, lightweight exhaust system which, as on all Maseratis, includes an air valve system capable of adding extra drama to the Ghibli's highly distinctive sound. In I.C.E. and Normal modes, the valves remain closed, keeping the engine noise discreet and understated.

However, when the Sport button is pressed, the bypass valves open up to release a powerful roar that can only be described as formidable. From standstill, the Maserati Ghibli accelerates to 60 mph in 5.5 seconds and has a top speed of 165 mph.



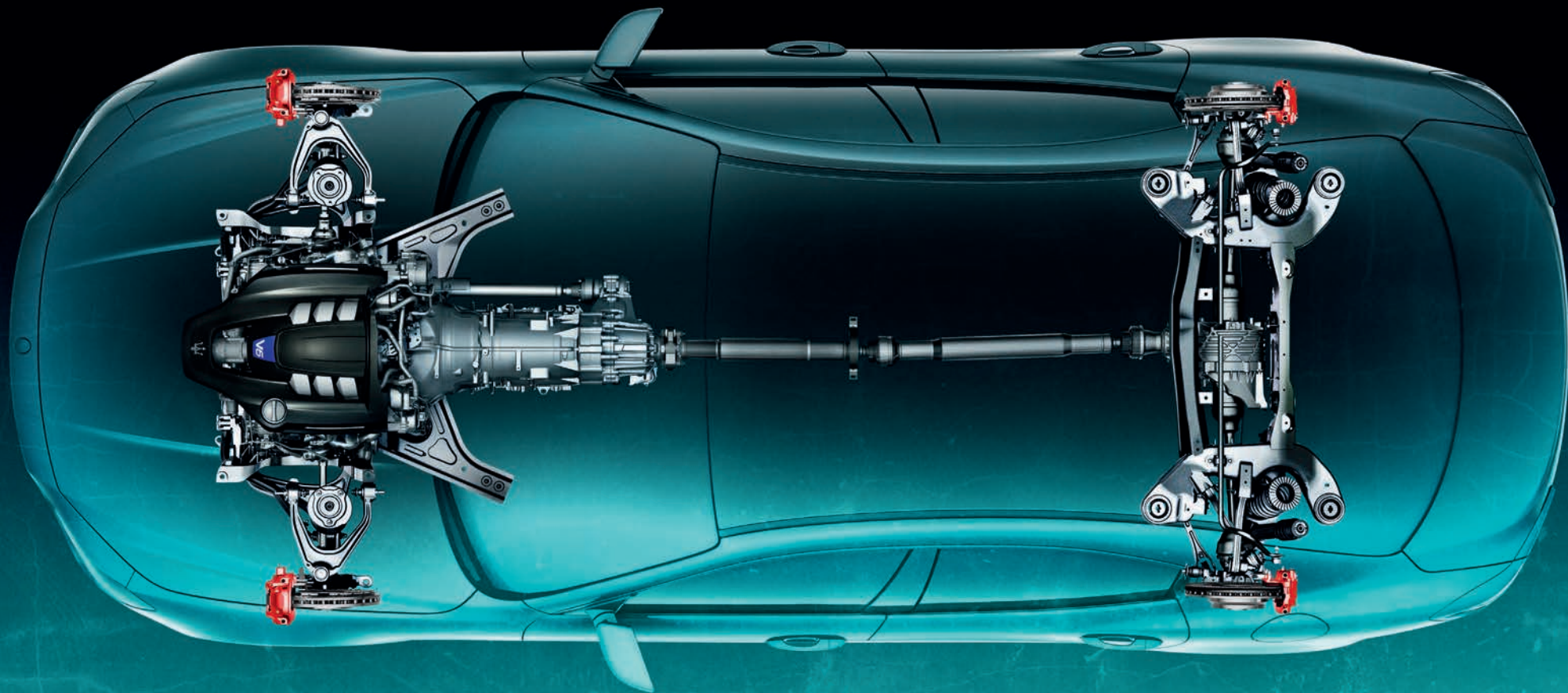
MASERATI GHIBLI S Q4. NEW HORIZONS IN PERFORMANCE, HANDLING AND SAFETY

From the very outset, Maserati's aim for the Ghibli was to produce a car that delivered the very highest levels of driving enjoyment on an everyday basis, whatever the road conditions. The Ghibli S Q4 - with its potent 404 HP (410 CV) 3.0-liter Twin Turbo V6 engine - successfully achieves this objective, thanks to its innovative 'on demand' Q4 All-

Wheel Drive system.

The Q4 system, introduced for the first time on the latest version of the Maserati Quattroporte, is compact, lightweight and highly efficient. It is controlled electronically via a special algorithm that monitors many of the car's dynamic parameters and then varies the distribution of drive torque over the four wheels.



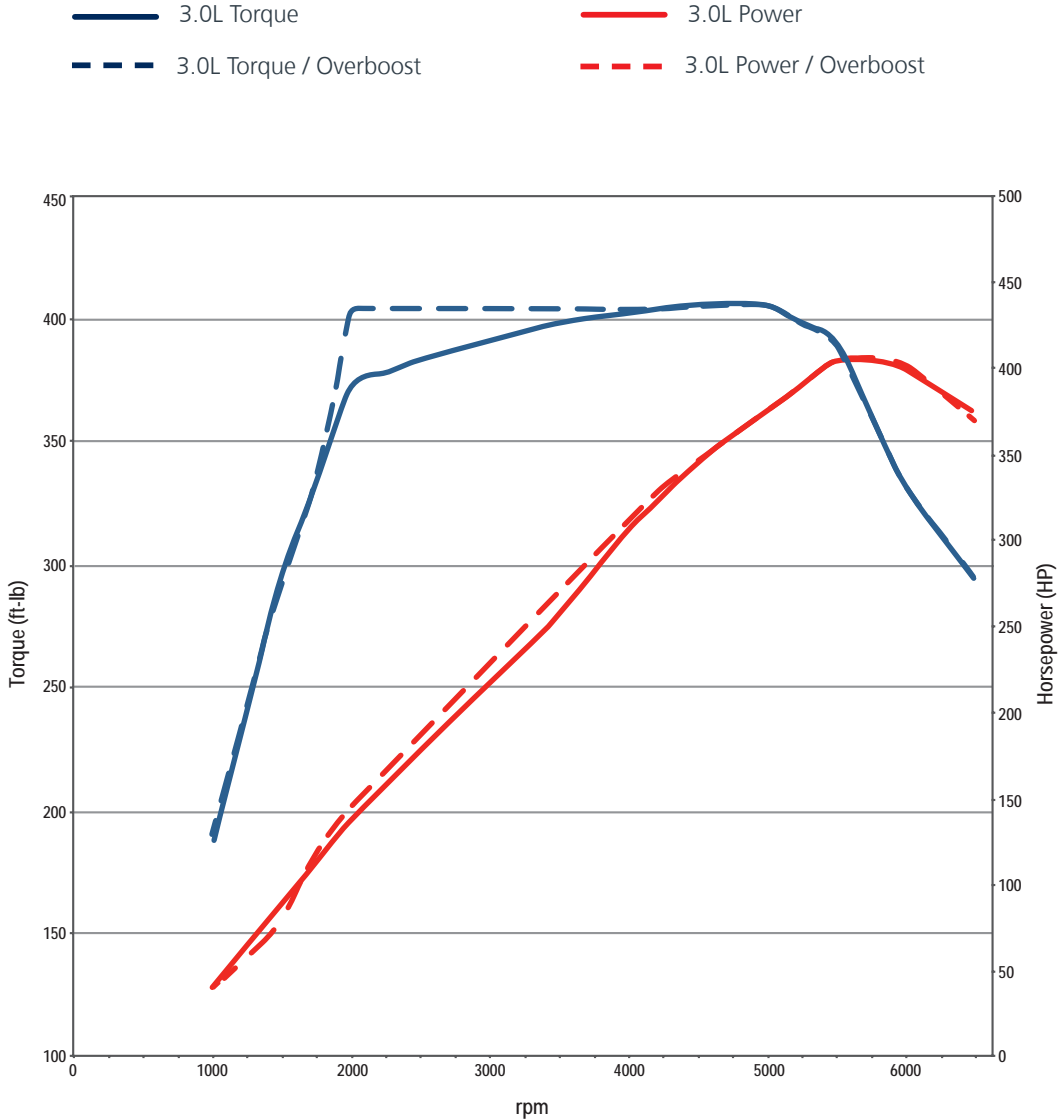


In normal conditions, all the drive torque from the engine is transmitted to the rear wheels, but if the road surface becomes slippery and grip starts to be lost, the system instantaneously (in just 150 milliseconds) transfers the necessary drive to the front wheels, up to the point where the torque is evenly shared between the two axles. The system operates in conjunction with the MSP electronic stability control to produce sportscar handling, together with outstanding safety on slippery road surfaces. The changes in drive torque distribution will probably not be noticed by the driver, but will show up on

the display in the center of the instrument panel.

Mechanically, the system transfers the drive torque to the front wheels by means of electronically controlled, multiple plate, wet clutches - in near silence.





Powering the Ghibli S Q4 is a 3.0-liter Twin Turbo V6 engine designed to deliver an awe-inspiring driving experience, generating 404 HP (410 CV) at 5,500 rpm and, in Sport mode, reaching a maximum torque of 406 lb-ft at just 1,750 rpm. An incredible 135 lb-ft of torque per liter means exceptional responsiveness at the slightest flexing of the right foot. Two parallel-mounted, low-inertia turbochargers help prevent turbo lag, and give greater elasticity and faster response. In addition, the engine features highly innovative engineering solutions that have

been developed to improve fuel efficiency: a high-pressure (200 bar) direct-injection system and the adoption in both cylinder heads of two continuous-phase timing variators which advance or delay the intake and exhaust valve timings. The driver can choose from three different engine modes: Normal, Sport and the new I.C.E. (Increased Control & Efficiency). This mode, developed to reduce fuel consumption, emissions and noise, delivers a more measured throttle response, for smoother driving. The Ghibli S Q4 accelerates from zero-to-60 mph in 4.7 seconds, with an impressive top speed of 176 mph.



THE EPITOME OF A TECHNOLOGICAL TRADITION

A Maserati is always recognizable from afar, thanks to the dramatic shape of its body and the thrilling sound of its engine. However, the Ghibli is no less distinctive when viewed close up. Its sumptuous interior and exquisite finishing are testament to nearly a hundred years of expertise and craftsmanship, along with the company's insistence on using only the very highest quality materials.

The high-efficiency, immensely powerful engines designed by Maserati Powertrain technicians

are matched with state-of-the-art engineering throughout the car: from the chassis to the transmission, through to the suspension and brakes, every component plays its part in delivering levels of comfort and performance that only Maserati drivers can enjoy.

This passion for quality inevitably enhances the Ghibli's reliability, for which Maserati is world renowned. As part of the car's exhaustive development program, Ghibli prototypes were driven for a total of almost four million miles in the most

extreme weather conditions across South Africa, Morocco, Sweden and New Zealand. Before being delivered, every Ghibli that comes off the production line undergoes over 700 individual checks and a 37-mile road test.

The Maserati Ghibli also benefits from first-class active and passive safety systems that provide peace of mind to its occupants and, thanks to a unique customization program, the interior can be made to reflect the owner's individual tastes and requirements.



All models in the Maserati Ghibli range benefit from the sophistication and refinement of the latest-generation, eight-speed ZF automatic transmission. Lightweight, precise and easily capable of coping with the car's high performance engines, it uses auto-adaptive

software to recognize the driving style and road conditions, and then alters the gear changing mode accordingly. The last two gears, seventh and eighth, have been specially calibrated to reduce fuel consumption and increase comfort on long, high-speed journeys.

On the Maserati Ghibli, the front-mounted gearbox transmits the drive to the rear wheels by means of a dual-section, articulated, drive shaft. This is coupled to a limited-slip mechanical differential, with an asymmetric locking function that

allows locking of 35% during traction and 45% during release.

There are five operating modes, selected using the buttons by the gear lever: Auto Normal, Auto Sport, Manual Normal, Manual Sport and the new I.C.E. (Increased Control & Efficiency).



AUTO NORMAL MODE

This preset mode provides smooth gearshifts at low revs to maximize ride comfort and minimize fuel consumption. When a more sporty style of driving is recognized, upshifts automatically take place at higher engine speeds.

AUTO SPORT MODE

The gearshifts are faster and occur at higher revs for a much more sporty driving style.



MANUAL NORMAL MODE

The driver can change gear using the optional paddles behind the steering wheel or the lever on the central tunnel. The system automatically shifts up a gear as the maximum engine speed approaches, and shifts down in the same way.

MANUAL SPORT MODE

The driver takes full control of the transmission: gearshifts are quicker and sharper, and the engine can be pushed right to the limit without the system intervening. The only automatic feature is downshifting if the revs drop too low.

I.C.E. (INCREASED CONTROL & EFFICIENCY) MODE

Developed not only for use in icy conditions, this mode is intended to ensure an even quieter, smoother ride, and also a reduction in fuel consumption. In I.C.E. mode, gearshifts take place automatically and are almost unnoticeable, for unrivalled ride comfort.



The Maserati Ghibli's stunning design has been made possible thanks to a brand new frame that is constructed from aluminium alloy to achieve strict weight and strength targets. For a car with a 118-inch wheelbase (the longest in its class) the Ghibli's roadholding and handling are outstanding, while its occupants enjoy the highest levels of safety.

A combination of aluminium and steel ensures that its weight distribution is ideally balanced, while special stiffening crossmembers deliver exceptional torsional rigidity.

In keeping with Maserati traditions, the Ghibli features a highly sophisticated suspension setup. The aluminium arms of the double-wishbone front suspension are higher up for more precise handling, while the five-arm multilink system at the rear provides

the perfect blend of comfort and agility. Particular attention has been focused on weight reduction: a large number of suspension components are made of lightweight aluminium, and the front stabilizer bar is hollow.

The Ghibli can also be equipped with the optional Skyhook suspension, with new shock absorbers featuring continuous damping variation.

The basic setting gives priority to ride comfort, but if more dynamic handling is required, the driver just presses the suspension button on the central tunnel and the shock absorbers immediately stiffen, significantly reducing load transfer during fast cornering.

Finally, a Sport pack option is available on the Ghibli S Q4. Along with a lowering of the suspension, this features hydraulic variable damping

shock absorbers that automatically adjust to different driving conditions.

All versions of the Maserati Ghibli feature powerful Brembo brakes that have been carefully matched with their engines' performance. The Ghibli S Q4 is equipped with dual-cast discs, which combine the strength of cast iron with the lightness of aluminium to help reduce the unsprung mass. Braking power is provided by efficient monobloc calipers, with six pistons at the front and four at the rear acting on ventilated, cross-drilled discs: 360 mm x 32 mm (front) and 350 mm x 28 mm (rear).

The Ghibli features a more compact, lightweight braking system: four-piston monobloc calipers act on 345 mm x 28 mm (front) and 320 mm x 22 mm (rear)

ventilated discs.

These brakes not only deliver extremely short stopping distances (118 ft from 60-to-zero mph) but are highly resistant to brake fade when the car is driven hard and fast over long distances. The servo-assisted hydraulic steering system ensures that the driver receives the very best feedback from the steering wheel,

with no annoying feel of artificial assistance when cornering at high speed. Specifically designed to make driving as enjoyable as possible, the Ghibli's steering system is light and responsive, even when parking. This precision is further enhanced by a new aluminium steering box, specifically developed to suit the front suspension layout.



MASERATI STABILITY PROGRAM (MSP)

The Maserati Stability Program (MSP) is an advanced electronic stability control system that reduces torque from the engine and activates the brakes if the vehicle begins to deviate from its normal trajectory or if a skid is detected. All this happens in just a few milliseconds.

The system combines a number of devices including ASR, which reduces wheelspin and improves traction, and MSR, which prevents wheels from locking up when changing down suddenly. ABS and EBD monitor the car's braking, stopping the wheels from locking and distributing the braking force between the front and rear axles. A Brake Assistance System (BAS) then recognizes emergency stops and boosts the pressure in the

hydraulic circuit for the ultimate in stopping power.

TIRE PRESSURE MONITORING SYSTEM (TPMS)

The Tire Pressure Monitoring System (TPMS) is a device that continuously monitors tire pressures by means of sensors fitted inside the wheel rims. The tire pressure is shown on the display in the center of the dashboard, and a beeper and warning light alert the driver if this drops below the optimal level or in the event of a puncture.

CRUISE CONTROL

Both versions of the Maserati Ghibli come with Cruise Control, operated from the steering wheel. The set speed is shown on the display in the middle of the instrument panel and is maintained even when the

road climbs or descends - the system makes the car accelerate or decelerate accordingly.

PARKING SENSORS AND REVERSING CAMERA

To assist with maneuvering in tight spaces, both versions of the Maserati Ghibli offer optional parking sensors housed in the front and rear bumpers. Beeping noises increase in frequency as the obstacle approaches, while the TFT display in the center of the instrument panel shows the car surrounded by symbols which light up in green, yellow or red depending on the remaining distance. In addition, there is an optional rear-view camera, fitted close to the trunk lid that shows a view of what is behind the car on the Maserati Touch Control display.

ADAPTIVE FRONTLIGHTING SYSTEM (AFS)

The outstanding lighting provided by the bi-Xenon front headlights is further enhanced by the Adaptive Front Lighting System (AFS) - available as an option on the Ghibli - which automatically adjusts the width and depth of the beam. This is made possible by a camera mounted in the rear-view mirror and sensors that monitor several different parameters, including the lights of other road users, the car's speed, and the way it is being driven. If the road ahead is empty, the beam expands to its maximum width and depth for the best visibility, with no need to switch manually to full-beam mode.

ELECTRIC PARKING BRAKE (EPB)

The Ghibli is equipped with an

Electric Parking Brake that is engaged via a control on the gear lever surround instead of a conventional mechanical lever. When necessary it can be used when the car is moving: the system communicates with the stability control system (MSP) and acts on all four wheels to obtain an immediate braking action (a deceleration of 0.5 g), without any loss of stability, until the control is released.

HILL HOLDER

To help the driver when starting off on an uphill slope, the Ghibli comes with the Hill Holder system. On a gradient, this device keeps the car braked for a short time, thus allowing the driver's foot to move from the brake to the accelerator pedal without the car rolling backwards.



Maserati made passive safety a top priority when designing the Ghibli. To provide the best possible protection for its occupants and help it achieve its aim of a five-star safety rating by EURO NCAP and US NCAP, it features the latest-generation airbag system and a special front-end crumple structure.

AIRBAGS

The Maserati Ghibli comes equipped with seven airbags. Two front airbags, both dual-stage, shield the driver and front passenger in the event of collision, while their torsos and hips are further protected by two side airbags located in the front seats. There are also two window airbags fitted in the roof next to the central pillar that cushion the heads of the front and rear passengers if the car is

struck from the side. A seventh airbag protects the driver's legs.

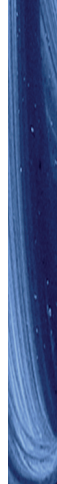
SEATBELT PRETENSIONERS AND ACTIVE HEADRESTS

The front seatbelts are fitted with electronically-controlled pyrotechnic pretensioners and the latest-generation load limiters. The system communicates with a sensor to determine the seriousness of a collision, and then activates with precisely the right amount of force to reel in the optimum length of belt. If the car is hit from behind, the active headrests of the two front seats automatically move in closer to the occupants' heads to reduce the risk of whiplash injury.

Both side seats at the rear are fitted with Isofix fasteners for child seats, properly protecting young passengers.







RELAXATION A PRIORITY

The new Maserati Ghibli is equipped with the very latest information and entertainment technology, making life on board either a relaxing or invigorating experience, depending

on your mood. In the center of the dashboard, the 8.4-inch Maserati Touch Control (MTC) display provides user-friendly access to the car's many systems and devices.







The system includes a radio and audio/video DVD player, along with satellite navigation and Bluetooth connection for audio streaming. The USB and Aux-In ports, located in a special compartment on the central tunnel, allow the connection of remote sources like mobile phones and other devices, while an SD memory card reader is also provided.

The standard audio system is designed to produce superb sound quality and includes eight high-performance speakers, all perfectly integrated into the car's interior design. For those requiring slightly more from their sound system, there is a first-level upgrade option that features a 600-Watt amplifier and ten hi-fi speakers.





CLIMATE CONTROL SYSTEM

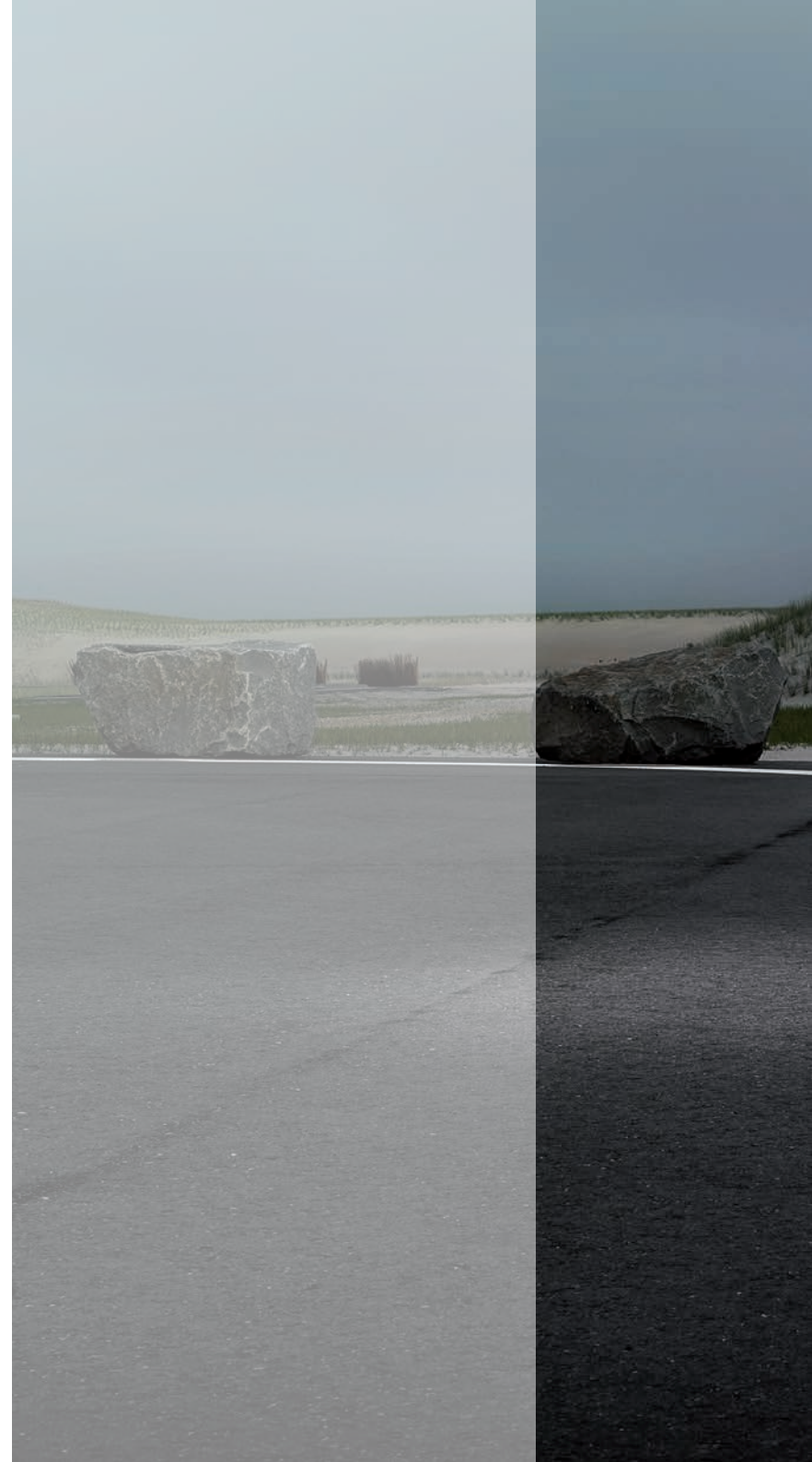
The automatic dual-zone climate control automatically adjusts the intensity of the ventilation in relation to the outdoor temperature, and allows those on board to select their own individual heat settings.

With 13 ventilation outlets, the system is able to cool or heat the car extremely rapidly and maintains the temperature by means of the Maserati Touch Control display or the control panel beneath it. The system is fitted with an anti-misting sensor that is automatically programmed to reduce the humidity content of the air as soon as the windows start to mist up.


TRUNK

The Maserati Ghibli's trunk is designed to provide the very best in space and versatility.

Its luggage capacity of 18 cu ft is able to accommodate large suitcases with ease, while inside, an interior light, a handy 12V power socket and special chromed rings for the connection of luggage nets make the trunk even more usable. The rear bench seatback can be folded down, asymmetrically, to take particularly large items of luggage.







The Maserati Ghibli can be equipped with other optional electronic devices that have been designed to make driving safer and even more rewarding. These include the exterior electrochromic rear-view mirrors that darken progressively as light intensity increases, and rear side windows and rear windscreen sunshades to enhance privacy and to screen occupants from the sunlight.

Alternatively, darkened privacy glass at the rear is also an option. For greater thermal insulation and quieter journeys, the Ghibli can be specified with double laminated, acoustic glass windows (a standard feature of the front windscreen).

KEYLESS GO / KEYLESS ENTRY

In the world of Maserati, small details are everything - right down to the design of the aluminium key, which reflects the Ghibli's style and incorporates 'Keyless Go' technology. Once inside the car, the driver has only to press the ignition button to start the engine. Also available is the optional 'Keyless Entry' function, which enables the driver to open the doors or trunk lid without ever touching the key.

STORAGE COMPARTMENTS

The interior of the Maserati Ghibli features numerous storage compartments. Along with the spacious, illuminated, climate-controlled glovebox, there are

two concealed cup holders in the central tunnel and a handy cubbyhole with Aux-In and USB docks for the connection of remote devices. Underneath the front armrests, there is another illuminated, climate-controlled compartment, with two more cup holders and a 12V power socket. In the rear, the bench seat is divided by a fold-down central armrest equipped with a 12V power source and a USB port.







BOWERS & WILKINS, MASTERS OF SOUND

For those seeking concert-hall acoustics in their Maserati Ghibli, the answer is the new-generation Premium Surround System, created in association with expert sound

specialists, Bowers & Wilkins. This optional hi-fi system reproduces every subtle note to perfection, with unparalleled dynamic purity: amazing sounds for this amazing car.







INTEGRATED ACOUSTICS

The Bowers & Wilkins system includes a 16-channel, 1,280-Watt amplifier that blends perfectly into the car's interior design, thanks to painstaking work on the layout of the sound sources. Fifteen speakers are located in the dashboard, doors and rear shelf to deliver the ultimate in acoustics without compromising the elegance of the cabin.

CONFIGURED TO PERFECTION

The tuning of a sound system is a sophisticated art, requiring thousands of hours of listening by the most highly trained ears. The Ghibli's Premium Surround System has been configured by the engineers responsible for Bowers & Wilkins' 800 Series Diamond speakers – the ones used in London's famous Abbey Road Studios.

INNOVATIVE MATERIALS

The speakers installed in the Ghibli benefit from the very latest technologies and materials, such as Kevlar and aluminium. These provide the ideal combination of lightness and rigidity, and extend the resulting sound to the very limits of human hearing. For the very best bass sounds, the speaker cones are made of Rohacell, a material normally used in the aeronautics industry.

SURROUNDED BY SOUND

The HARMAN QuantumLogic Surround® Sound processing system recognizes and isolates the various elements in an audio track – for instance, the musical instruments, the voices and the internal reverb. These are separated and processed to provide crystal-clear sounds with the highest possible definition.



THE LUXURY OF FEELING UNIQUE

The Maserati Ghibli is a car of almost limitless possibilities in terms of customization. In keeping with the marque's traditions of exclusivity, there is a vast array of options and a huge choice of colors and materials from which to choose.







The interior can be upholstered in three different ways: first, there are the standard leather seats in three colors: Nero, Cuoio and Sabbia; second, this leather can be extended to the side areas above the dashboard, the instrument panel and the door armrests, with the added possibility of an attractive two-color combination: Nero and Cuoio. For those wanting an even more luxurious interior, a third option involves the entire interior - seats, dashboard, doors and central tunnel - upholstered in the ultra-high-quality leather produced by Poltrona Frau®. With this option, six interior colors are

available: as well as Nero, Cuoio and Sabbia, owners can choose from Marrone, Rosso Trofeo and Blu Corse.

For the ultimate in sophistication, the roof lining can be finished in Alcantara® fabric, in Nero, Sabbia or Grigio. Standard trim on the Ghibli is Dark Mirror High Gloss. Standard trim on the Ghibli S Q4 is Radica wood trim on the central tunnel and door panel trims. This fine, open-grained Burr Walnut wood finish not only looks superb but is pleasing to the touch, as well. For a more classic or sportier interior, there is the choice of polished Ebano, Light Oak, or Carbon Fiber with a special gloss finish.





Brushed aluminum gearshift paddles behind the steering wheel look fantastic, while Maserati sport pedals in brushed steel with special rubber inserts provide tremendous grip and are guaranteed to catch the eye. There are a number of new exterior colors to choose from, two of them pearlescent: Bianco Alpi and Rosso Energia. The Ghibli features distinctive 18-inch, 12-spoke alloy wheels as standard, with the option of 19-, 20- and 21-inch alloys to emphasize either its elegant or sporty nature. Visible behind the wheel spokes of the Ghibli S Q4 are the colored calipers of the Brembo brakes, available in Black (standard), Red, Blue and Silver.









WARRANTY

Transferable four year/50,000 mile new car limited warranty with 24/7 Roadside Assistance.

SERVICE*

First service at 12,500 miles or after two years of the vehicle's life and subsequently every 12,500 miles or two years (whichever occurs first).

MAINTENANCE PROGRAM*

For more information, please contact your local Authorized Maserati Dealer.

*Not included in the base price.

GHIBLI

DIMENSIONS AND WEIGHTS

Length	195.7 in (4,971 mm)
Width (with side mirrors)	82.7 in (2,101 mm)
Width (without side mirrors)	76.6 in (1,946 mm)
Height	57.5 in (1,461 mm)
Wheelbase	118.0 in (2,997 mm)
Front track	64.4 in (1,636 mm)
Rear track	65.1 in (1,654 mm)
Front overhang	36.8 in (935 mm)
Rear overhang	40.9 in (1,039 mm)
Trunk capacity	18 ft³ (500 l³)
Fuel tank capacity	21.1 gal (79.8 l)
Curb weight	3,992 lb (1,811 kg)

ENGINE

Number of cylinders and layout	3.0 L Twin Turbo V6 (60°)
Displacement	182 in³ (2,979 cm³)
Transmission	ZF 8-Speed Automatic
Compression ratio	9.7:1
Peak horsepower	345 HP (350 CV)
RPM at peak horsepower	5,250 rpm
Peak torque	369 lb-ft (500 Nm)
RPM at peak torque	1,750 rpm
Maximum RPM	6,750 rpm

PERFORMANCE

Maximum speed	165 mph (266 km/h)
0-to-60 mph acceleration	5.5 sec (0-to-100 km/h; 5.6 sec)

GHIBLI S Q4

DIMENSIONS AND WEIGHTS

Length	195.7 in (4,971 mm)
Width (with side mirrors)	82.7 in (2,101 mm)
Width (without side mirrors)	76.6 in (1,946 mm)
Height	57.5 in (1,461 mm)
Wheelbase	118.0 in (2,997 mm)
Front track	64.4 in (1,636 mm)
Rear track	65.1 in (1,654 mm)
Front overhang	36.8 in (935 mm)
Rear overhang	40.9 in (1,039 mm)
Trunk capacity	18 ft³ (500 l³)
Fuel tank capacity	21.1 gal (79.8 l)
Curb weight	4,124 lb (1,871 kg)

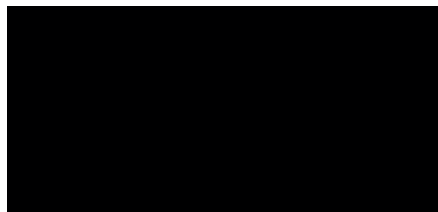
ENGINE

Number of cylinders and layout	3.0 L Twin Turbo V6 (60°)
Displacement	182 in³ (2,979 cm³)
Transmission	ZF 8-Speed Automatic
Compression ratio	9.7:1
Peak horsepower	404 HP (410 CV)
RPM at peak horsepower	5,500 rpm
Peak torque	406 lb-ft (550 Nm)
RPM at peak torque	1,750 rpm
Maximum RPM	6,750 rpm

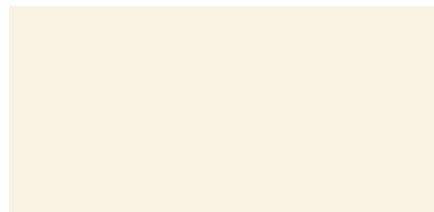
PERFORMANCE

Maximum speed	175 mph (282 km/h)
0-to-60 mph acceleration	4.7 sec (0-to-100 km/h; 4.8 sec)

SOLID PAINTS



Nero



Bianco

METALLIC PAINTS



Grigio



Grigio Metallo

MICA PAINTS



Nero Ribelle



Blu Emozione



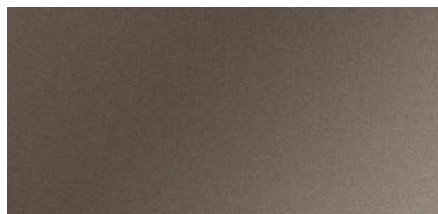
Blu Passione



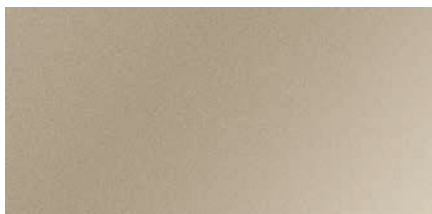
Rosso Folgore



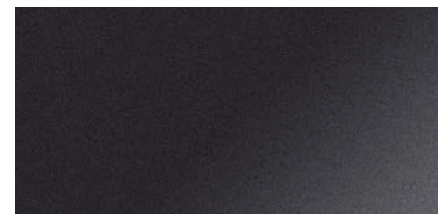
METALLESCENT PAINTS



Bronzo Siena

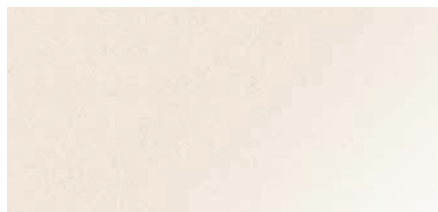


Champagne



Grigio Maratea

PEARLESCENT PAINTS

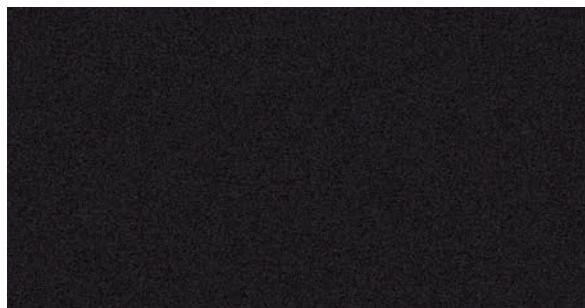


Bianco Alpi

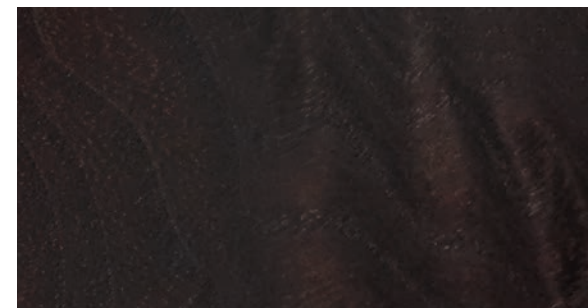


Rosso Energia

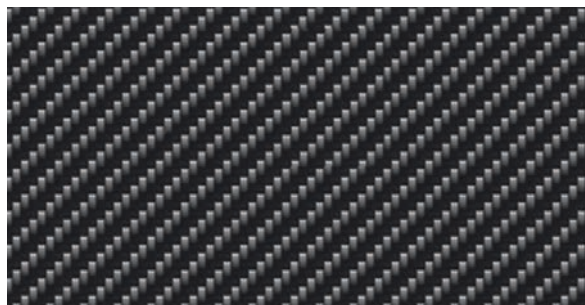
INTERIOR TRIM



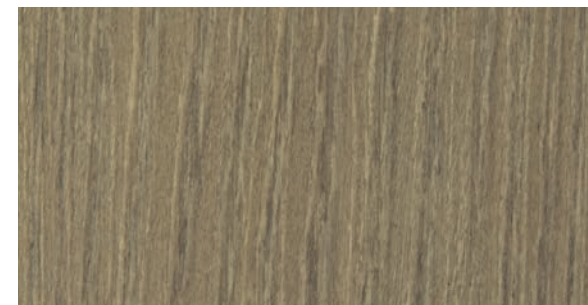
Dark Mirror



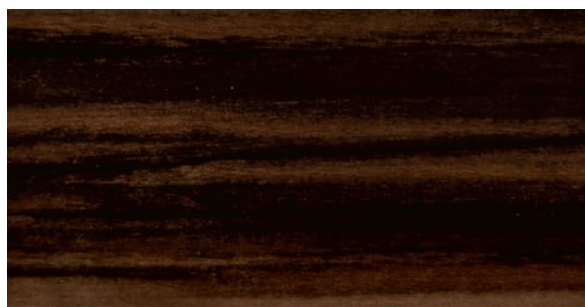
Radica



Carbonio

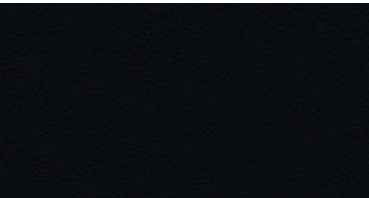


Rovere Chiaro

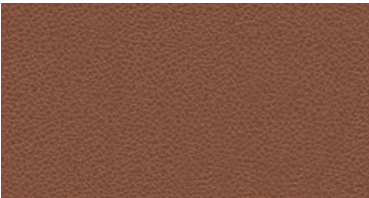


Ebano

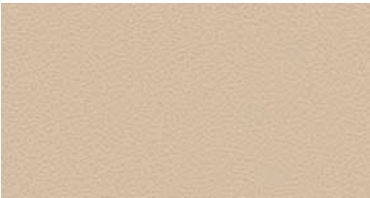
LEATHER COLORS



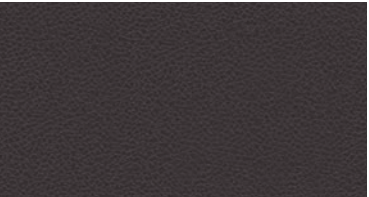
Nero



Cuoio



Sabbia



Marrone



Rosso

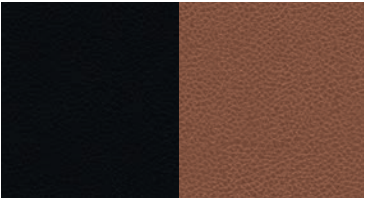


Blu

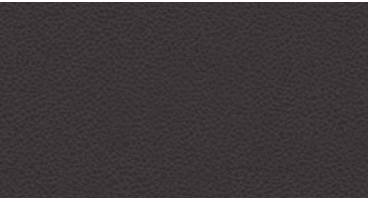
UPPER DASHBOARD



Nero



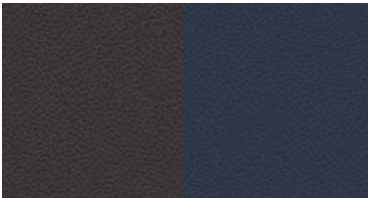
Nero / Cuoio



Marrone



Nero / Rosso

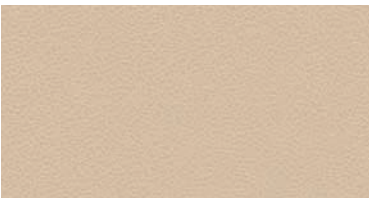


Marrone / Blu

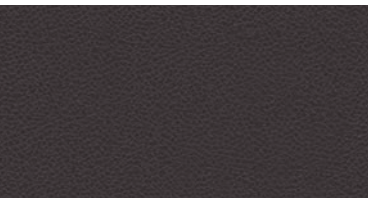
LOWER DASHBOARD / CARPET / SEAT BELTS



Nero



Sabbia

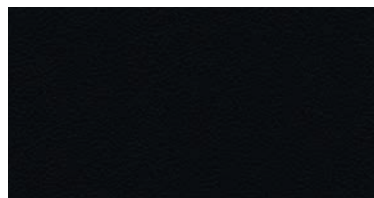


Marrone

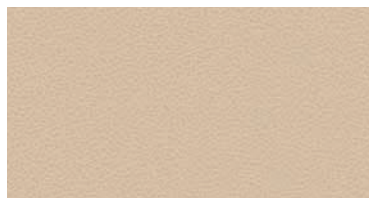




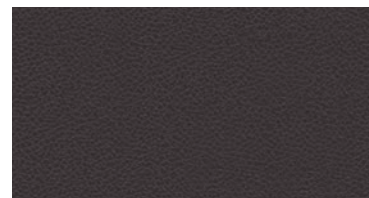
STEERING WHEEL



Nero

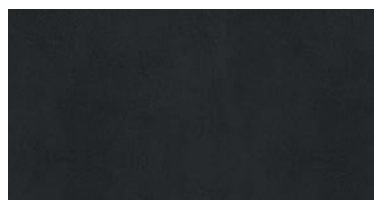


Sabbia

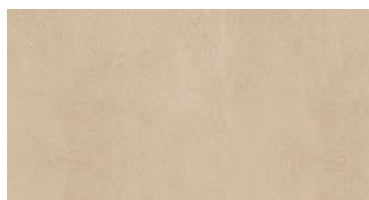


Marrone

HEAD LINING



Nero



Sabbia



Grigio

Official Maserati Dealers will be glad to provide further details.

ALFIERI

Dimensions: 18-inch diameter
Finishing: Standard
Front tire: 235/50 R 18
Rear tire: 235/50 R 18



VULCANO

Dimensions: 18-inch diameter
Finishing: Machine polished
Front tire: 235/50 R 18
Rear tire: 275/45 R 18



POSEIDONE

Dimensions: 19-inch diameter
Finishing: Machine polished
Front tire: 245/45 R 19
Rear tire: 275/40 R 19



PROTEO

Dimensions: 19-inch diameter
Finishing: Machine polished
Front tire: 245/45 R 19
Rear tire: 275/40 R 19



URANO

Dimensions: 20-inch diameter
Finishing: Standard
Front tire: 245/40 R 20
Rear tire: 285/35 R 20



URANO

Dimensions: 20-inch diameter
Finishing: Machine polished
Front tire: 245/40 R 20
Rear tire: 285/35 R 20



TITANO

Dimensions: 21-inch diameter
Finishing: Matt
Front tire: 245/35 R 21
Rear tire: 285/30 R 21



Forged







Black



Red



Blue



Silver



GHIBLI

GHIBLI S Q4

WHEELS & CHASSIS

» 18-inch Alfieri design alloy wheels (235/50 R18 front; 235/50 R18 rear)	•	-
» 18-inch Vulcano design alloy wheels (235/50 R18 front; 275/45 R18 rear)	-	•
» 19-inch Poseidone design alloy wheels (245/45 R19 front; 275/40 R19 rear)	O	O
» 19-inch Proteo design alloy wheels (245/45 R19 front; 275/40 R19 rear)	O / P	O / P
» 20-inch Urano design alloy wheels (245/40 R20 front; 285/35 R20 rear)	O / P	O / P
» 20-inch machine polished Urano design alloy wheels (245/40 R20 front; 285/35 R20 rear)	O / P	O / P
» 21-inch Titano design alloy wheels (245/35 R21 front; 285/30 R21 rear)	O / P	O / P
» 18-inch space-saver spare wheel	•	•
» Brake calipers painted black	-	•
» Brake calipers painted red	-	O / P
» Brake calipers painted blue	-	O / P
» Brake calipers painted silver	-	O / P
» Limited-slip differential	•	•
» ZF-8 speed automatic transmission; with tip up/down function from gear-knob and fully manual mode (activation by specific button)	•	•
» BRAKING SYSTEM: Front Brakes: 4-piston aluminum monobloc fixed calipers with ventilated discs (345x28mm) Rear Brakes: Floating calipers with ventilated discs (320x22mm)	•	-
» BRAKING SYSTEM: Front Brakes: 6-piston aluminum monobloc fixed calipers with dual-cast ventilated drilled discs (360x32mm) Rear Brakes: 4-piston aluminum monobloc fixed calipers ventilated discs (350x28mm)	-	•
» Power-assisted steering, with speed sensitive feature	•	•
» Sport suspension	-	P
» Skyhook - electronically variable active damping suspension system	O	O

SAFETY

» Bi-xenon front headlamps	•	-
» Bi-xenon front headlamps with Adaptive Front Lighting System (AFS)	O / P	•
» Daytime Running Light (DRL)	•	•
» LED Taillamps and third stop light integrated into the rear window	•	•
» Automatic headlamp activation	•	•
» Air-bag system: dual stage front bags (driver and passenger), side bags, head bags	•	•
» Driver knee bag	•	•
» Front seat belts with pre-tensioners and load limiters; rear seat belts with load limiters	•	•



GHIBLI



GHIBLI S Q4

» MSP - includes: Maserati Stability Program (MSP) Acceleration Slip Regulation (ASR) Antilock Braking System (ABS) Electronic Brake Distribution (EBD) (MSR)	•	•
» I.C.E. control (Increased Control & Efficiency): specific software for the easiest vehicle dynamic management in all conditions and reduced consumptions	•	•
» BAS (Brake Assistance System)	•	•
» Hill holder	•	•
» Electronic Parking Brake (EPB)	•	•
» Tire Pressure Monitoring System (TPMS) with pressure displayed on central digital cluster	•	•
» Active Cruise Control	•	•

EXTERIOR EQUIPMENT

» Solid paint	•	•
» Metallic paint	O	O
» Metallescent paint	O	O
» Mica paint	O	O
» Pearlescent paint (Tricoat)	O	O
» Electric sunroof, with tilt and slide functions	O / P	•
» Chromeline exterior trim	•	•
» Heated windscreen nozzles	P	P
» Front and rear parking sensors with graphic display on central digital cluster	P	P
» Rear view camera with imaging displayed on central MTC	•	•
» Automatically dimming interior mirror and Auto High Beam Assist	•	•
» Electrically adjustable, foldable and heated exterior mirrors with integrated LED turn lights	•	•
» Automatically dimming exterior mirrors with integrated LED turn lights	P	P
» Twin, dual-pipe exhaust system in chrome-plated stainless steel	•	•
» Ghibli badge on rear deck lid	•	•
» Q4 badge on rear deck lid	-	•



GHIBLI

GHIBLI S Q4

INTERIOR EQUIPMENT

» Fabric headlining	•	•
» Alcantara® headlining	O	O
» Leather interior upholstery for seats	•	•
» Poltrona Frau® extended leather interior upholstery for instrument cowl, individual upper dashboard sections and door armrests	O / P	O / P
» Poltrona Frau® fine grain extended leather interior upholstery for seats, upper and lower dashboard, armrests, upper and central door panels	O / P	O / P
» Poltrona Frau® fine grain extended leather interior upholstery for seats with perforated seat squab and backrest centers, upper and lower dashboard, armrests, upper and central door panels	O / P	O / P
» Metallic effect dark mirror finish trim for selected interior details (lower console, door panels)	•	-
» Open pore Radica wood trim for selected interior details (lower console, door panels)	O / P	•
» Open pore Rovere Chiaro wood trim for selected interior details (lower console, door panels)	O / P	O / P
» High gloss Ebano wood trim for selected interior details (lower console, door panels)	O / P	O / P
» High gloss carbon fiber finish trim for selected interior details (lower console, door panels)	O / P	O / P
» Multifunction three spoke steering wheel	•	•
» Steering wheel and gear knob in colored leather (Nero or Marrone)	•	•
» Steering wheel and gear knob in Sabbia leather, with matching inserts	O	O
» Steering wheel and gear knob in colored leather with wood insert (Nero or Marrone)	O	O
» Steering wheel in Sabbia leather with wood insert and gear knob	O	O
» Steering wheel in Nero leather with carbon fiber insert and gear knob	O	O
» Sport pedals in brushed stainless steel	P	P
» Maserati “Active shifting” aluminum gear shift paddles mounted on the steering column	P	P
» Athermic glass	•	•
» High thermal and noise insulated, laminated glass	O	O
» Driver seat electrically adjustable (6 ways), passenger front seat manually adjustable (4 ways)	•	-
» Front seats electrically adjustable (8 ways + 4 ways for lumbar adjustments), with 2 memories for driver’s side	O / P	•
» Heated front seats	O / P	•
» Heated rear seats	P	P
» Split folding rear seats (60/40)	•	•
» Front tunnel with hidden Media Box (includes: USB and Aux-in connection), 2 cupholders and cigarette lighter	•	•
» Front armrest with twin mechanical opening, with illuminated storage compartment, air conditioned, 2 cupholders and 12V socket	•	•
» Dashboard mounted, Maserati-design clock	•	•
» Rear armrest, with USB charger unit and 12V socket, 2 hidden cupholders	•	•
» Storage compartments: driver glove box; passenger glove box; front and rear armrest, map pocket on front and rear doors, seatback net pockets	•	•



GHIBLI



GHIBLI S Q4

» 12V Socket in the trunk	•	•
» Velour carpet floor mats	O / P	O / P

COMFORT AND FUNCTIONALITY

» MTC: Maserati Touch Control unit. 8.4-inch touchscreen display, including: satellite navigation, radio, CD/DVD audio/video player, SD card reader, USB and Aux-in (into dedicated compartment on front tunnel), Apple chip, bluetooth function for audio streaming and phone devices, climate controls, car set-up, etc.)	•	•
» 7-inch color cluster display with onboard computer/driver info	•	•
» Navigation system	P	•
» External temperature sensor	•	•
» Dual-zone automatic climate control	•	•
» Rain sensor for automatic windscreen wiper function	•	•
» Power rear sunshade	O / P	O / P
» Front seat ventilation	O / P	O / P
» Heated steering wheel in fine Poltrona Frau® colored leather (Nero or Maronne) and wood insert	O / P	O / P
» Heated steering wheel in fine Poltrona Frau® Sabbia leather with matching colour and wood inserts	O	O
» Steering column with manual height and reach adjustments	•	•
» Steering column with power height and reach adjustments	O / P	O / P
» Power foot pedals	P	P
» Standard audio system with 8 speakers (280W)	•	•
» Premium audio system with 10 speakers (600W)	P	O
» Bowers & Wilkins Premium Surround System with 15 speakers (1280W)	P	O
» Bluetooth	P	•
» Aluminum key fob, with keyless go function (also includes: lock button, unlock button, trunk opening, exterior light on)	•	•
» Keyless entry system	•	•
» Easy entry / exit system for steering column and seat	P	P
» Alarm system (perimeter and volumetric sensing, anti-lift device, electronic immobilizer)	O	O
» HomeLink: integrated 3-channel remote garage door opener	•	•
» Wi-Fi vehicle hot spot	O	O
» Smoking kit (ashtray for cupholder)	O	O
» Quick user's guide and DVD interactive user guide, browsable via MTC (Maserati Touch Control)	•	•

GHIBLI

BASE PACKAGE

- Bluetooth
- Sunroof
- Auto-Dimming Mirrors
- 8-Way Power Front Seats
- Electr. Adjustable Steering Column

TECHNOLOGY PACKAGE PLUS

- Navigation System
- Premium Sound System (15 speakers 1,280 Watts)

PREMIUM PACKAGE

- Remote Start
- Front & Rear Parking Sensors
- Heated Front Seats
- Power Foot Pedals
- Headlight Control
- Rain Sensor
- Easy Entry

LUXURY PACKAGE*

- Extended Premium Leather
- Velour Carpet Floor Mats

COLD WEATHER PACKAGE

- Heated Steering Wheel w/Wood Trim
- Heated Rear Seats
- Power Rear Sunblind

LUXURY PKG. W/VENT. FRONT SEATS*

- Extended Premium Drilled Leather
- Ventilated Front Seats
- Velour Carpet Floor Mats

TECHNOLOGY PACKAGE

- Navigation System
- Premium Sound System (10 speakers 600 Watts)

SPORT PACKAGE*

- Shift Paddles
- Inox Sport Foot Pedals

GHIBLI S Q4

PREMIUM PACKAGE

- Remote Start
- Front & Rear Parking Sensors
- Power Foot Pedals
- Headlight Control
- Rain Sensor
- Easy Entry

COLD WEATHER PACKAGE

- Heated Steering Wheel w/Wood Trim
- Heated Rear Seats
- Power Rear Sunblind

LUXURY PACKAGE*

- Extended Premium Leather
- Velour Carpet Floor Mats

SPORT PACKAGE*

- Shift Paddles
- Inox Sport Foot Pedals
- Sport Suspension

LUXURY PKG. W/VENT. FRONT SEATS*

- Extended Premium Drilled Leather
- Ventilated Front Seats
- Velour Carpet Floor Mats

*Additional content is required with this package.





The illustrations and texts contained in this brochure are based on information available at the time of production and do not contain a description of specific characteristics of the car by the Manufacturer. Some models, equipment and accessories may not be available or

may only become available after the automobile's launch on the market. Maserati reserves the right to modify colors, designs and technical features at any time and without forewarning. Official Maserati Dealers will be glad to provide further details and updates in this regard.



MASERATI



WWW.MASERATI.US

[1-877-MY MASERATI / DRIVEMASERATI@MASERATIUSA.COM](mailto:DRIVEMASERATI@MASERATIUSA.COM)

MASERATI NORTH AMERICA, INC. / 250 SYLVAN AVENUE / ENGLEWOOD CLIFFS, NJ 07632