

2005 Mercedes-Benz

SLK-Class SLK 350 SLK 55 AMG

360°

of exhilaration



Mercedes-Benz

2005

Mercedes-Benz

SLK-CLASS

200,000

There are over

words in the English language...

and yet, words escape us.

From any perspective, it's pure exhilaration. We can try to describe it to you, but ultimately it's only when you've experienced the SLK that all the words and numbers ring true. Welcome to the intense rush that is the completely new 2005 SLK-Class.



SLK350 shown in optional Iridium Silver metallic with Red leather and optional AMG Sport Package.



SLK 350 shown in optional Iridium Silver metallic with Red leather and optional Lighting and Heating Packages.



SLK 350 shown in optional Iridium Silver metallic with optional heated seats and Entertainment Package with Navigation.





SLK350 shown with optional Lighting Package.



100%
pure sports car.

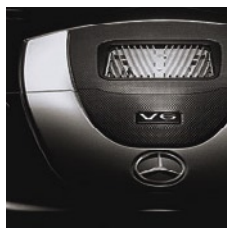
SLK 350 shown in optional Iridium Silver metallic with optional AMG Sport and Lighting Packages.

SLK 350

ENGINE

5.4

seconds later, you can breathe again.



A class-leading 0-60 time¹ is only the beginning. Beyond the astounding thrust is the thrill of a heart-pounding rush every time you punch it. The breathtaking SLK 350's talents are provided by an all-new 268-hp 3.5-liter V-6 that gives 100% of its tremendous 258 lb-ft of torque at a mere 2,400 rpm and relentlessly holds it there through 5,000 rpm. The result – scalding off-the-line acceleration and immediate response throughout the rev range. Keep pushing, and its 4-valve DOHC design gives an addictive charge to the 6,500-rpm redline, yet never runs out of breath – even as you struggle to capture yours. And once you do, the new SLK will be ready to go again.

¹ With manual transmission. Stated rates of acceleration are based upon AMCI's test-track results and may vary depending upon model, environmental and road surface conditions, driving style, elevation and vehicle load.

■ ONE, ONE THOUSAND

■ TWO, ONE THOUSAND

■ THREE, ONE THOUSAND

■ FOUR, ONE THOUSAND

■ FIVE, ONE THOUSAND

■ BREATHE

SLK 350 shown in optional Iridium Silver metallic with Red leather and optional AMG Sport and Lighting Packages.

SLK 350

TRANSMISSIONS



The only **6** speed you'll ever want.

It used to be, the advice was simple: If you buy a sports car, go for the stick shift. And with the SLK 350, who could blame you? The newly redesigned 6-speed manual transmission is everything an enthusiast could ask for, with a crisp short-throw shifter and a light, positive action. But then again, the optional 7-speed automatic is an equally tempting choice. The only 7-speed in the industry, it gives an unmatched range of ratios for everything from vigorous acceleration to relaxed cruising. You can tap the shifter left or right to enjoy the manual-style control of Touch Shift. Or for a burst of power—like a blistering passing move—hold the lever to the left for a second and the transmission will automatically preselect the optimum gear for acceleration. Which transmission is right for you? Try them both. You'll have a great time deciding.

The only **7** speed you can get.



SLK 350 shown at top in optional Iridium Silver metallic with optional Lighting Package.

46%

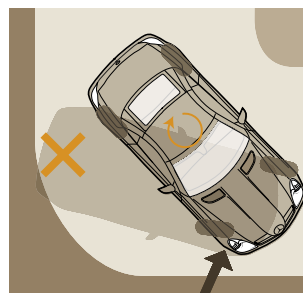
less twist. Way more shout.



SLK350 shown in optional Obsidian Black metallic with Black leather and optional Lighting and Heating Packages.

As impressive as ultimate cornering grip may be, it's how the SLK gets there that will make you sing out every time you enter a turn. Forty-six percent greater torsional rigidity helps the 4-wheel multilink suspension work with razor-sharp precision, allowing the staggered-width 17" high-performance tires¹ to be pushed eagerly into every corner. The surgical accuracy of rack-and-pinion steering lets you point that Formula One-inspired nose exactly where you want it. A near-ideal front-to-rear weight balance delivers the same thrill whether diving in for that late apex or unwinding the wheel as you come rocketing out. And with our standard ESP stability control, you can explore the SLK's awe-inspiring handling with confidence-inspiring poise. It all adds up to an experience only the SLK can provide—the ability to turn rubber, metal and tarmac into pure emotion.

1 Z-rated tires are optimized for performance driving and may provide reduced ride comfort, increased tire noise, substantially increased treadwear and greater susceptibility to damage compared with H-rated tires.



51

precision perforations in each front rotor.

Countless precision stops.



At first glance, those little holes may not seem like much. But in a high-performance braking situation where rotors can get red-hot and brake fluid can boil, the ability to dissipate heat and vapors is vital. Rather than simply drilling holes in the discs—a method that can cause “stress risers” that weaken the metal—the perforations in the SLK front brakes are cast in place to help maintain maximum strength. With the stopping power of competition-bred hardware such as beefy 4-piston front calipers grasping largest-in-class ventilated 13” discs, the SLK 350 can exceed the expectations of even the most demanding driver. You can count on it.

SLK 350 shown in Mars Red.



1 skipped heartbeat.

The optional AMG Sport Package is designed to elicit an immediate visceral response. You might salivate over the new staggered-width 17" AMG-design 5-spoke alloy wheels wrapped in high-performance tires,¹ your gaze riveted by the chiseled front air dam, side skirts and rear apron. The taut, lowered sport suspension will accelerate your pulse as you hunt down your favorite curves, while steering wheel-mounted shift buttons will put the spine-tingling thrill of the optional 7-speed automatic's Touch Shift feature at your fingertips. We know you'll be drawn to it, but be careful—it's not for the faint of heart.

1 Z-rated tires are optimized for performance driving and may provide reduced ride comfort, increased tire noise, substantially increased treadwear and greater susceptibility to damage compared with H-rated tires.

SLK 350 shown in optional Iridium Silver metallic with Red leather and optional AMG Sport, Lighting and Heating Packages.

SLK 350

INTERIOR LUXURY

SLK 350 shown in Mars Red with Beige leather and optional heated seats, Trim Package, and Entertainment Package with Navigation.

0

afterthoughts.

In the SLK, form doesn't just meet function, it engages in a passionate relationship. The prominent speedometer and tachometer reside in dramatically angled tubes that add style while helping to reduce glare—especially important in a roadster. The 3-spoke multifunction sport steering wheel puts numerous controls at your fingertips—vital when spirited driving is the priority. A door pull that is a piece of modern architecture is home to seamlessly integrated power window switches. Sport seats with leather upholstery reveal Silver-painted magnesium seat frames chosen for both their light weight and exceptional strength. Intuitive seat-shaped controls adjust the optional power seats. Everything lies within reach, and begs to be touched.



355^{hp}

period.



SLK 55 AMG shown in optional Iridium Silver metallic.



Affordable exotic. The term gets thrown around, but does any vehicle truly live up to it? For your consideration, we offer the SLK 55 AMG—perhaps the most affordable car worthy of the label. With a handcrafted 5,439-cc V-8 pumping out 355 hp and 376 lb-ft of peak torque and the first 7-speed automatic ever offered on an AMG model, you can reach 60 mph in a scant 4.9 seconds.¹ Bend curves to your will with an AMG-calibrated suspension and feel the arresting performance of 6-piston composite front calipers grasping perforated 13.4" brake discs. After you've admired the unique AMG-design lower bodywork, the subtle rear lip spoiler, the AMG multispoke 18" wheels with high-performance tires,² and the sophisticated growl departing the four polished stainless-steel exhaust tips, you might just decide this is the only exotic you'll ever need—at any price.

¹ Stated rates of acceleration are based upon manufacturer's track results and may vary depending upon model, environmental and road surface conditions, driving style, elevation and vehicle load. ² AMG 18" wheels and accompanying high-speed-rated tires provide substantially increased treadwear and reduced ride comfort compared to H-rated tires. Serious wheel and tire damage may occur if the vehicle is operated on rough or damaged road surfaces or upon encountering road debris or obstacles.



SLK 55 AMG

COCKPIT

AMG

Your brain runs at

200 mph.

Can your car measure up?

The more time you spend inside the SLK 55 AMG, the more you realize how much thought went into it. Your immediate impulse for manual shifting is met by ideally placed fingertip controls on the thick-rimmed, leather-wrapped steering wheel. Your cognitive center's demand for information is fed by the rapid sweep of red indicators across a 200-mph speedometer¹ and 7,000-rpm tachometer. Your brain's pleasure center revels in the touch of supple two-tone Nappa leather with Alcantara trim on AMG sport seats. It's the perfect environment for those who like to think fast.

¹ Obey all speed laws. Top speed electronically limited to 155 mph.



SLK 55 AMG shown in Black/Red leather with optional Premium Package, and Entertainment Package with Navigation.

SLK-CLASS

RETRACTABLE HARDTOP

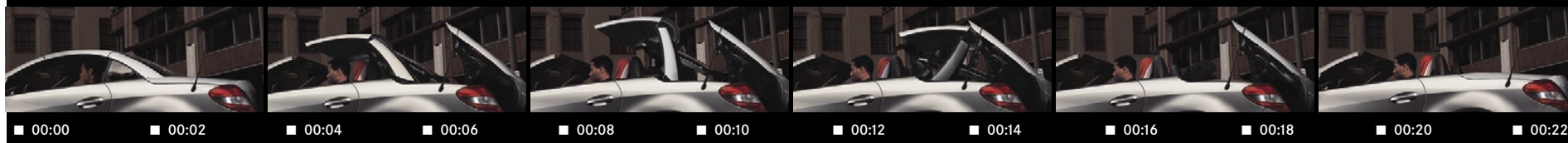
In just 22 seconds, the SLK converts from a seductive hardtop coupe to an open-air extrovert. And while either configuration is exciting in its own right, it's equally thrilling to watch the retractable steel roof fold itself away at the touch of a button. As the hardtop glides back, the rear window pivots through a 150° arc, allowing the top to stow more efficiently and help preserve trunk space. As an option, you can even operate the top from outside the car using the **SmartKey** remote.¹ You might draw a crowd. But that's understandable—even when it's not being driven, the SLK is artistry in motion.

¹ Remote top operation included in Premium Package on SLK 350, and standard on SLK 55 AMG.



Ooh to ahh in **22** seconds.

SLK 350 shown in optional Iridium Silver metallic with Red leather and optional AMG Sport Package.



SLK-CLASS

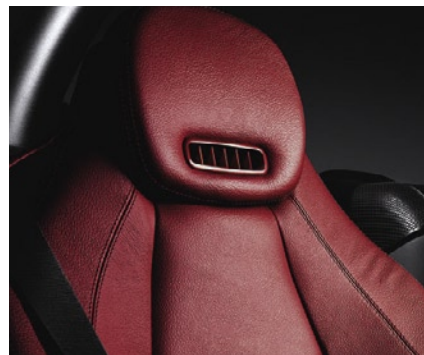
INNOVATIONS: AIRSCARF



72°
of freedom.

SLK 350 shown in optional Caspian Blue metallic with optional Heating Package.

If you drive a convertible, you know it – that point when it gets too late in the day or in the season, and the top must come up. It's like being told to go inside when you still want to play. That's why Mercedes-Benz created AIRSCARF. A soothing stream of heated air to your neck, head and shoulders helps take the bite out of chilly top-down conditions. With individual 3-stage temperature controls and airflow that automatically adjusts to your driving speed, it's never been more fun to stay out late.



Protection at

0.000001

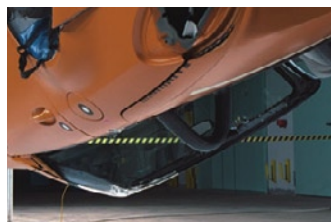
millimeter.



SLK 350 shown in optional Obsidian Black metallic with dealer-installed accessory 18" two-piece wheels.

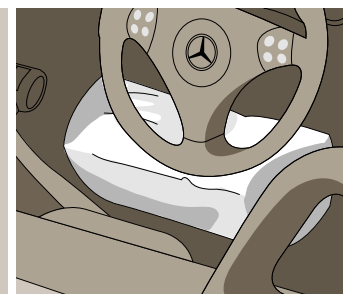
It's a simple desire. You'd like your SLK to stay looking new for a long time. But to accomplish this feat, Mercedes-Benz went to the leading edge of scientific exploration—and the exciting world of nano-technology. A Mercedes exclusive, the SLK incorporates microscopic ceramic nano-particles—each with a diameter tens of thousands of times thinner than a human hair—into the paint's clearcoat. Tiny? Yes. But mighty, too. When the clearcoat is applied, the nano-particles float around freely in the liquid paint. As the

paint cures, the particles cross-link into an incredibly strong, dense network—think of an invisible chainlink fence. The resulting finish offers considerably greater and longer-lasting resistance to fine scratches—such as those caused by car washes and environmental factors—than conventional paint finishes, for an enduring deep gloss. To those who say beauty is only skin deep, we can only respond that it's much, much thinner than that.



It starts with higher standards. The robust structure and advanced safety technologies of the SLK-Class allow it to pass a battery of more crash tests than any single government requires. Along with the open-air exhilaration only a roadster can provide, it's comforting to know you're guarded by dual steel roll bars bolted directly to the body structure to enhance rollover protection,¹ and the protection of six air bags—including head/thorax side-impact air bags and dual knee air bags.

¹ The roll bar system is designed to enhance the level of rollover protection compared to an open vehicle without one. No system, no matter how sophisticated, can eliminate the chance of injury in an accident. Please always wear your seat belt.



250

milliseconds that can change the rest of your life.

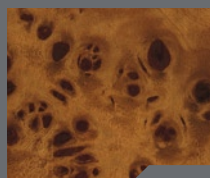
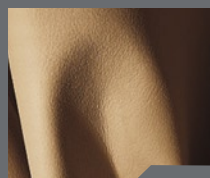
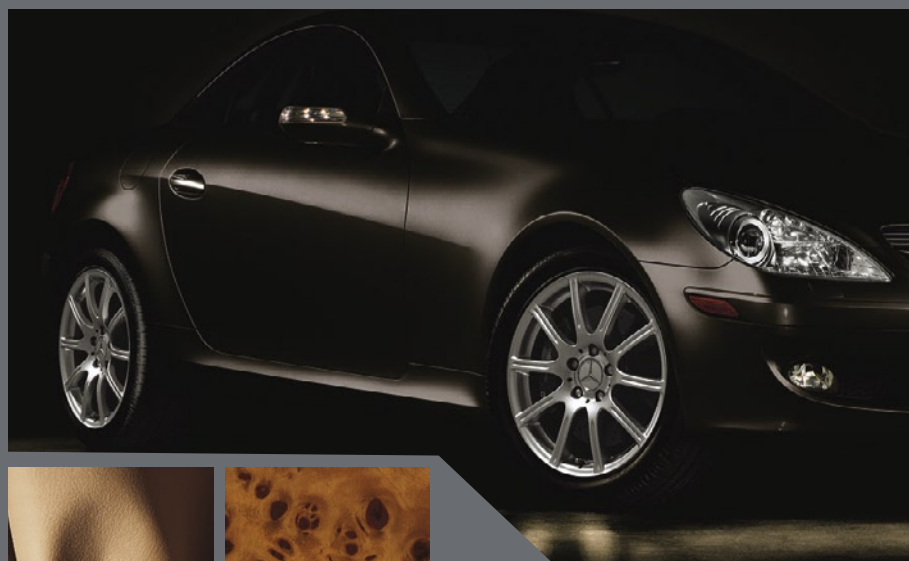
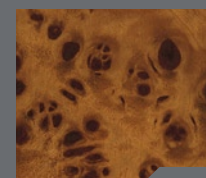
Sometimes the smallest detail can make a huge difference. Consider the LED taillamps on the SLK. They illuminate the brake lamps 250 milliseconds quicker than traditional bulbs. A quarter of a second may not sound like much—it's faster than the blink of an eye—but a car following you at 60 mph covers 22 feet in that amount of time. Sometimes an accident can be avoided with just a few extra inches to respond. So something as simple as a better brake lamp that may give the car behind you extra stopping distance isn't just smart. It's brilliant.

designo Automotive artistry

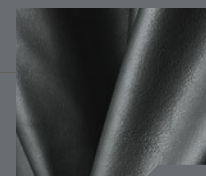
With its aggressive lines and invigorating performance, the completely new SLK embodies the thrill that only a true sports car can provide. For some, it's also the perfect canvas for a most personal statement of individual style. To provide exclusivity to go with the exhilaration, we present the SLK-Class *designo* editions.¹ Each is a masterpiece, featuring an exclusive *designo* exterior color perfectly partnered with sumptuous, hand-selected Nappa leather upholstery and exquisite wood trim matched by eye for grain, then shaped and finished by hand. The result is a work of automotive art that would make a delightful addition to any collection.

designo CHABLIS EDITION

Elegance meets SLK athleticism in the *designo* Chablis Edition. The soft tones of *designo* Chablis metallic paint are echoed in matching Nappa leather trim on the two-tone seats, door trim and roll bars. And for a most subtle finish, hand-finished Natural Poplar wood trim awaits your touch throughout the cabin, including the door pulls and parking brake handle.

*designo* ESPRESSO EDITION

A most stimulating experience starts with the robust Mocha Black metallic paint of the *designo* Espresso Edition. Savor the creamy richness of Sand Nappa leather on the roll bars and door trim, edging the floor mats, and stunningly contrasted on the seats by Black quilted Nappa leather inserts. Adding extra flavor, Natural Poplar wood trim is fitted throughout the cabin.

*designo* GRAPHITE EDITION

Sleek sophistication is the calling card of the *designo* Graphite Edition. Immaculately attired in *designo* Graphite metallic paint, with matching hand-fitted Graphite Nappa leather on the roll bars, two-tone seats and door trim, it is a singular presence of power and prestige. Natural Poplar wood trim throughout the interior offers a striking contrast, for an intriguing look that invites an extended stay.

¹ SLK-Class *designo* editions require heated seats or Heating Package.



Infinitely appealing

(A) **8-WAY POWER SEATS** Included as part of the Comfort Package, 8-way power driver and passenger seats each feature 3-position memory for custom-tailored comfort. The memory system also retains your desired settings for the package's 4-way power steering column and the side mirrors.

(B) **VAVONA WOOD TRIM** For an ideal blend of sport and luxury, the Trim Package adds the classic beauty of Vavona wood on the steering wheel, handbrake, door pulls and dash.

(C) **COMAND** The optional Cockpit Management and Data system integrates the radio, available GPS satellite navigation,¹ and controls for the optional phone and glovebox-mounted 6-disc CD changer into a single in-dash unit that you can access from the SLK's standard multifunction display and steering-wheel controls. A large color-LCD screen provides crisp, clear displays. And with the new DVD-based navigation system, the maps of the contiguous U.S., Hawaii and Canada are all read from a single disc. To keep your maps and points of interest as up-to-date as possible, ask your dealer about our NavUpdate subscription program, which lets you receive annual DVD updates for up to three years at significant savings.

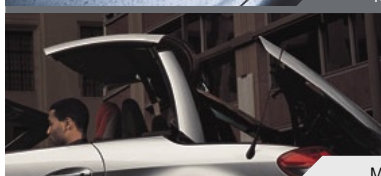
(D) **SIRIUS SATELLITE RADIO** It's like having a music library of over two million songs in your Mercedes. Optional SIRIUS Satellite Radio² integrates with the standard audio system and controls. Your SIRIUS subscription brings over 100 all-digital coast-to-coast streams, with more than 60 commercial-free streams of music, from rock to country and classical to jazz, plus over 40 non-musical streams that cover news, sports—including live games from the NHL,[®] NBA and NFL[®]—and such well-known names as Discovery Channel, E!, and Radio Disney.

(E) **BI-XENON HEADLAMPS** High Intensity Discharge headlamps produce a brighter, whiter light on both high and low beams for better vision over longer distances. They also have dynamic level control to help cut glare, as well as heated high-pressure washers. Backlit "gills" provide a predatory glow from the side view.

(F) **AMBIENT LIGHTING** Setting a mood that's ideal for that next moonlit drive, ambient interior lighting casts a gentle glow over the center console and in each footwell. It's part of the Premium Package, which also includes the convenience of additional reading lamps and entry/exit lighting for a graceful departure.

(G) **LOGIC7 DIGITAL SURROUND SOUND** Raise your SLK to a new level of sonic splendor with a 380-watt, 11-speaker harman/kardon[®] LOGIC7[®] 7.1-channel digital surround sound system. It's part of the Entertainment Packages, which also include the COMAND system and glovebox-mounted 6-disc CD changer.

¹ While the navigation system provides directional assistance, the driver must remain focused on safe driving behavior, including paying attention to traffic and street signs. The driver should utilize the system's audio cues while driving and should only consult the map or verbal displays once the vehicle has been stopped in a safe place. DVD-ROM maps do not cover all areas nor all routes within an area. ² While the SIRIUS network of satellite and terrestrial antennas provides nearly seamless service throughout the contiguous U.S., SIRIUS service may be unavailable or interrupted for a variety of reasons, including environmental or topographic conditions; in certain locations such as tunnels, parking garages, or within or next to large buildings; or near other technologies that can interfere with the SIRIUS signal. NHL[®] is a registered trademark of the National Hockey League. NFL[®] is a registered trademark of the National Football League and its affiliates. The National Basketball Association name is the property of NBA Properties, Inc.



(H) **HEATED SEATS** Included with AIRSCARF as part of the optional Heating Package or available separately, heated seats help take the chill out of even the coldest day. The heated seats offer three levels of soothing warmth. (I) **6-DISC CD CHANGER** Conveniently mounted in the glovebox and fully integrated with the audio or COMAND system in your SLK-Class, the optional single-feed 6-disc CD changer makes it easy to enjoy hours of your favorite audio entertainment. (J) **CORNER-ILLUMINATING FOGLAMPS** To help you see better in turns and when entering dark areas such as driveways and parking structures, corner-illuminating front foglamps²—part of the Lighting Package—monitor steering angle and turn-signal use, and illuminate to help brighten your path. (K) **RAIN-SENSING WIPERS** With this option—part of the Premium Package—the intermittent wipers automatically adjust their frequency based on the amount of rainfall that an infrared sensor detects on the windshield glass. (L) **PLEXIGLASS WINDSCREEN** This accessory windscreen³ helps keep the rear view clear while limiting noise and buffeting when you drive your SLK with the top down. (M) **SMARTKEY REMOTE ROOF ACTIVATION** Included with the Premium Package, the SLK's standard SmartKey adds the convenience of infrared-remote roof operation—perfect to cool off a hot cabin, or close the roof after parking, from outside the car. (N) **DIGITAL CLIMATE CONTROL** This optional system—part of the Premium Package—features left and right controls for temperature and airflow, full automatic operation, and a charcoal filter that can automatically shut off incoming air when it senses an increase in smog.

ACCESSORIES

Your dealer offers an enticing selection of SLK accessory items—from distinctive alloy wheels to eye-catching brushed aluminum mirrors—to let you add even more individualized appeal to your SLK. To ensure the highest quality, each of these components is designed, engineered and tested to the same exacting standards as your Mercedes.



HANDS-FREE COMMUNICATION SYSTEM (COMPATIBLE PORTABLE PHONES SOLD SEPARATELY)

Plug one of our sleek new accessory **Motorola phones** into your SLK, and it becomes part of our integrated Hands-Free Communication System.¹ With the phone docked in the armrest cradle, your phone book is automatically downloaded into the car while the phone battery charges, and the phone is connected to the vehicle's integrated antenna system. Calls are clearly delivered through the audio system, which automatically mutes the radio or pauses the CD. You can even control calls via the multifunction steering wheel. Your Mercedes-Benz dealer offers a selection of the latest Motorola mobile phones for most major carriers.

¹ For safety reasons, we encourage the driver to stop the vehicle in a safe place before answering or placing a call. Always dock the phone in the cradle for use inside the vehicle. Operating a phone or radio transmitter with its own attached or built-in antenna while the engine is running can interfere with the vehicle's electronic systems. ² Not available with AMG Sport Package or on SLK 55 AMG. ³ Not available with *designo* editions.

ENGINE

268-HP 3.5-LITER DOHC 24-VALVE V-6



Pumping out 268 hp and 258 lb-ft of torque, the SLK 350's 24-valve DOHC V-6 features variable intake and exhaust valve timing, with continuously variable adjustment of all four cams up to 40° for smooth idling, rich midrange torque and high-rpm punch. Partnered with this is an innovative intake system engineered with movable "turbulence flaps" that vary the path and flow rate

of the incoming air. At higher engine speeds, a shorter intake path allows maximum air volume, while at lower engine speeds, a longer path helps accelerate the intake air for better cylinder charging. These features combine to make the SLK 350 engine incredibly flexible, allowing it to provide more than 85% of its maximum torque from as low as 1,500 rpm, while

supplying maximum power well in excess of the magical 100-hp-per-liter goal of modern high-performance engines. Extensive use of race-proven lightweight materials, including an aluminum block and heads and a magnesium intake manifold, helps ensure that the SLK 350 is as responsive as it is powerful.

TRANSMISSIONS

6-SPEED MANUAL
OPTIONAL 7-SPEED AUTOMATIC

The 6-speed manual transmission has been improved to give it an even sportier edge. Beneath the contoured shift knob is a short-throw shifter with a precise new direct-action rod-type linkage for quicker and crisper gear changes. No less impressive is the optional 7-speed automatic—an industry exclusive. The greater number of gears allows for a snappier first gear for quick off-the-line acceleration, a

smaller rpm drop with each upshift for seamless mid-range response, and a long-legged top gear for quiet and economical cruising. Its driver-adaptive control even runs out each gear to higher rpm when you're driving more enthusiastically. The 7-speed also makes especially good use of its extra gears: Unlike ordinary automatic transmissions that sequentially march through their gears as they downshift,

the SLK can actually skip as many as four gears, meaning noticeably quicker downshifts and the ability to get back on the power sooner. It even "blips" the throttle to match revs, for smoother downshifts. Along with the SLK's standard Touch Shift manual-style control, the optional AMG Sport Package adds the easy access of steering wheel-mounted controls.

HANDLING

SPORT SUSPENSION
STAGGERED-WIDTH WHEELS AND TIRES
AERODYNAMICS

The source of the SLK 350's responsive handling is a highly developed 4-wheel multilink suspension that offers precise wheel control with excellent ride quality. Grip is communicated through 225/45 R17 tires on 7.5"-wide wheels at the front, and 245/40 R17 tires on 8.5"-wide wheels at the rear.¹ The optional AMG Sport Package

features new AMG-design 5-spoke alloy wheels and a firmer, sport-tuned suspension that also lowers the ride height for enhanced handling. The SLK's body is also designed to enhance handling through refined air management. The Formula One-inspired nose and wide front valance direct air along the sides of the SLK,

while the strongly tapered rear end helps make a clean break. To help aid stability and further reduce drag, the SLK features small spoilers ahead of the front and rear tires, and an integrated spoiler edge in the trunk lid to increase downforce and help keep the SLK firmly planted on the road.

BRAKING

13.0" PERFORATED FRONT ROTORS
4-PISTON FRONT CALIPERS
BRAKE ASSIST

To match the impressive power of its new V-6, the SLK 350 has an equally impressive braking system. Large, ventilated 13.0" front rotors feature perforations to help divert water, dirt and hot vapors away from the brake components. Expected on racing machinery but unusual

on a street car are 4-piston front calipers—chosen for their ability to more evenly apply stronger brake forces across the pads. And since the SLK is a Mercedes, a full complement of safety features includes ABS as well as Mercedes-pioneered emergency-sensing Brake

Assist. Brake Assist senses panic stopping by the speed at which you depress the brake pedal and automatically applies all available power braking boost immediately, helping to reduce overall stopping distances.²

¹ Z-rated tires are optimized for performance driving and may provide reduced ride comfort, increased tire noise, substantially increased treadwear and greater susceptibility to damage compared with H-rated tires. ² Braking effectiveness also depends on proper brake system maintenance, and tire and road conditions.

RETRACTABLE HARDTOP

HARDTOP OPERATION AND CONSTRUCTION
DOUBLE-HINGED TRUNK LID

An electrohydraulically retractable steel hardtop lets the SLK transform from coupe to roadster in only 22 seconds. It's easily done from inside the car via a single console-mounted control. With the optional Premium

Package, you can also operate the top from outside the car via the standard SmartKey remote. The hardtop's rugged construction includes a twin-layer steel roof panel, steel C-pillars and a 3-mm-thick heated

safety-glass rear window. The trunk lid is of an ingenious double-hinged design that opens from the front to accept the top, and from the rear—like a traditional trunk—for easy loading and unloading of cargo.

INTERIOR LUXURY

LEATHER-UPHOLSTERED SPORT SEATS
9-SPEAKER AUDIO SYSTEM
DUAL-ZONE CLIMATE CONTROL

The SLK is comprehensively equipped for your driving enjoyment. Its numerous amenities include 8-way adjustable leather sport seats, and 9-speaker audio with a CD player and automatic speed-sensitive volume adjustment. CFC-free automatic climate control offers dual temperature controls and an electrostatic dust filter.

MULTIFUNCTION DISPLAY
EXPRESS-UP/DOWN WINDOWS
SMARTKEY SYSTEM

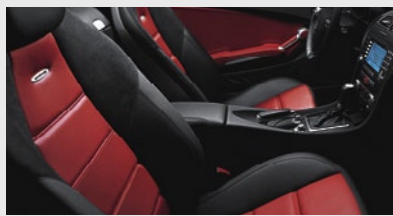
Information is concisely provided by the multifunction display that lets you view a trip computer, audio selections, outside temperature indicator, coolant temperature or a digital speedometer. The front windows feature express-up/down, and all four windows can be lowered at once via the power top control. A double-hinged center

armrest that opens toward driver or passenger to reveal a storage area is made even more useful by a **SmartKey** central locking and security system that automatically locks the console and glovebox—ideal when parking with the top down.

SLK 55 AMG

HANDCRAFTED 5,439-cc V-8
7-SPEED SPEEDSHIFT AUTOMATIC

RACING-INSPIRED BRAKES
18" WHEELS AND TIRES



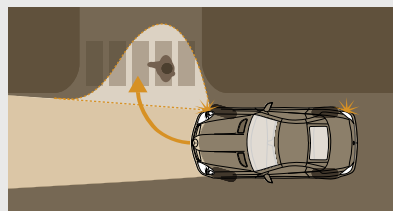
The AMG experience begins with a V-8 producing an enormous 355 hp and 376 lb-ft of torque, and making its presence known through a low-backpressure dual exhaust system with two sets of twin polished stainless-steel tips. A long-standing tradition, each AMG engine is handcrafted by a single technician—lift the hood and you'll see a plaque bearing his signature. Enhancing the industry's only 7-speed automatic—

and the first AMG vehicle ever to feature it—is AMG SpeedShift™ programming that provides 35% quicker shifts and holds gears during cornering for increased dynamic performance. Steering wheel-mounted fingertip shift controls allow manual upshifts and downshifts. To match the engine's magnificent power, an AMG high-performance braking system includes 6-piston front calipers grasping huge compound 13.4" discs—

perforated and internally vented to help cool the brakes, even after strenuous use. With a 4.9-second 0–60 time¹ and racing-derived brakes, the AMG-calibrated sport suspension works its magic through 225/40 ZR18 front and 245/35 ZR18 rear high-performance tires² on staggered-width AMG-design multispoke lightweight alloy wheels.

INNOVATIVE OPTIONS

RUN-FLAT TIRES
CORNER-ILLUMINATING FOGLAMPS
RAIN-SENSING WIPERS



For an added measure of security and control, the SLK 350 is available with optional run-flat tires. The self-supporting sidewalls help maintain the tire's structure, so the vehicle may continue to be driven a short distance after a puncture. In conjunction with the run-flat tires is a new low-tire-pressure sensor that works in conjunction with the ESP stability program. ESP constantly monitors

the speeds of all four wheels, and compares them with other handling dynamics, to diagnose a significant loss of pressure in any tire and alert the driver via the multifunction display. To help you see better in turns or when entering dark driveways or alleys at speeds of up to 25 mph, optional corner-illuminating foglamps³ monitor the angle of the steering wheel and turn-signal use. The system illuminates

either foglamp to provide better lighting to the side.

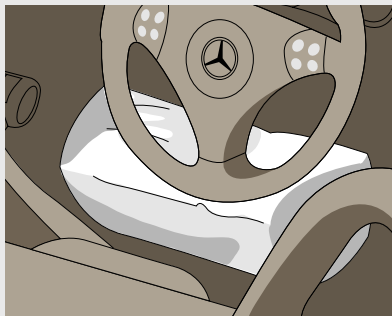
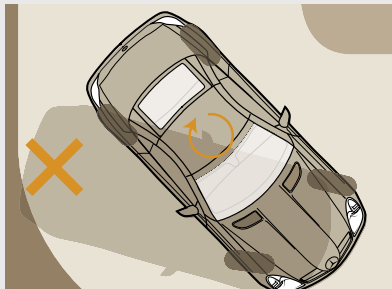
And to allow you to concentrate more on driving and less on adjusting the wipers, the optional rain sensor automatically adjusts the frequency of the intermittent wipers based on the amount of rainfall detected on the windshield by an infrared sensor.

¹ Stated rates of acceleration are based upon manufacturer's track results and may vary depending upon model, environmental and road surface conditions, driving style, elevation and vehicle load. ² AMG 18" wheels and accompanying high-speed-rated tires provide substantially increased treadwear and reduced ride comfort compared to H-rated tires. Serious wheel and tire damage may occur if the vehicle is operated on rough or damaged road surfaces or upon encountering road debris or obstacles. ³ Not available with AMG Sport Package or on SLK 55 AMG.

SAFETY

DUAL ROLL BARS
DUAL KNEE AIR BAGS
HEAD/THORAX SIDE-IMPACT AIR BAGS

INTEGRATED ROLLOVER SENSOR
ESP



Beneath the SLK's sleek appearance is a robust yet lightweight structure engineered to protect you when things get serious. Its advanced crumple zones include full-width front and rear crossmembers designed specifically to help protect in offset collisions. Reinforcements of the bulkhead and a floor crossmember near the pedals help to strengthen the cabin. The body structure behind the seats includes a convex aluminum bulkhead with a steel crossmember running underneath and an innovative magnesium fuel tank partition. The retractable steel roof adds to the SLK's exceptional rigidity when raised, and is designed to integrate with the rear crumple zone in the event of a rear-end collision. To help preserve occupant space in the event of a rollover, oval steel tubes are welded into the A-pillars, and dual steel roll bars are bolted directly to the body structure.

Should a collision occur, the SLK employs a combination of the latest technologies to provide outstanding protection. The SLK's integrated restraint system includes adaptive front air bags with dual-stage inflation, head/thorax side-impact air bags, and knee air bags for the driver and passenger.¹ The seat belts integrate Emergency Tensioning Devices (ETDs), which remove seat-belt slack in a front or rear collision exceeding a preset threshold, and belt force limiters, which help reduce peak loads on the belted occupants. A rollover sensor instructs the head/thorax air bags and ETDs to deploy in a detected rollover.

To help keep you out of harm's way, our pioneering **Electronic Stability Program (ESP)** continuously monitors your steering and braking actions while you're cornering and compares them to the actual vehicle path. If it senses the onset of plowing (understeer) or

fishtailing (oversteer), ESP brakes individual wheels and/or reduces excess engine power, to help keep you on course.² ESP also incorporates traction control to help counteract wheelspin under acceleration.

1 WARNING: THE FORCES OF A DEPLOYING AIR BAG CAN CAUSE SERIOUS OR FATAL INJURY TO A CHILD UNDER AGE 13. **A CHILD UNDER 13 MUST NOT BE A PASSENGER IN THIS VEHICLE** UNLESS THE CHILD IS BELTED INTO AN APPROPRIATE, PROPERLY INSTALLED **BABYSMART-COMPATIBLE** CHILD SEAT. SEE OPERATOR'S MANUAL FOR ADDITIONAL WARNINGS AND INFORMATION ON AIR BAGS, SEAT BELTS AND CHILD SEATS. **2** No system, no matter how sophisticated, can repeal the laws of physics or overcome careless driving actions. Please always wear your seat belt.

The first name in service

The innovative spirit that drives us to create the world's finest vehicles is directly reflected in an impressive selection of owner benefits. Consider the Mercedes-Benz Roadside Assistance Program, the first of its kind and still the only one that doesn't expire. Our new Mercedes-Benz Maintenance System lets you go farther than ever between scheduled oil changes. And our Customer Assistance is there for you 24 hours a day, every day. When we invented the first car in 1886, we also created the first car owner. For nearly 120 years, it's been our passion to ensure that driving a Mercedes-Benz remains an experience that's second to none.



24-hour Roadside Assistance for the life of the vehicle

The first of its kind, the Mercedes-Benz Roadside Assistance Program is still the only one that remains in effect for the entire life of the car. Our Roadside Assistance technicians can draw on years of experience and training to get you back on the road as quickly as possible.¹

Mercedes-Benz warranties

Our New Vehicle Limited Warranty runs 48 months or 50,000 miles, whichever comes first. And anytime during the first year of new-vehicle ownership, you can also purchase a Mercedes-Benz Extended Limited Warranty that will provide additional protection when the New Vehicle Limited Warranty expires.²

The new Mercedes-Benz Maintenance System

We've made caring for your SLK easier than ever. With the Mercedes-Benz Maintenance System, the service intervals are fixed and predictable—every 13,000 miles or one year (10,000 miles/1 year on AMG models).³ Your car will even remind you, about a month before service is due, via an automatic display on the dashboard that also tells you which type of maintenance service is due.

The Mercedes-Benz Service Welcome

Getting proper care for your Mercedes is easiest when you go to the people who know your vehicle—and you—best: your Mercedes-Benz Center's Service Department. And to help you get acquainted, just bring your car in for a no-charge first visit between 1,000 and 3,000 miles, where your dealer will perform a diagnostic check and address any questions you might have. It's part of our Service Welcome, which also provides a check of your tires at no charge anytime before 6,500 miles.⁴

24-hour customer service

Our Customer Assistance Center is your one-stop source for answers. Whether you need to know how to use your audio system, find the nearest Mercedes-Benz dealer, get pricing, or learn about personal and automotive accessories, just call 1-800-FOR-MERCEDES or press the **Tele Aid** *i*-button in your car.⁵

Mercedes-Benz Credit

For qualified customers, leasing and financing are available through Mercedes-Benz Credit. Visit them on the Internet at mbcredit.com.

Sign and Drive

Our legendary Roadside Assistance service includes bringing you some fuel if you've run out, replacing a flat tire with your spare, or jump-starting your car if the battery dies. All at no charge, and all for as long as you're driving a Mercedes-Benz—even somebody else's.⁶ Help is as close as your car's wrench button⁵ or just a call away at 1-800-FOR-MERCEDES.

Trip Interruption benefits

In the unlikely event that a breakdown covered by your MBUSA New Vehicle Limited Warranty occurs more than 100 miles from your home, leaves your Mercedes inoperable or unsafe to drive, and requires overnight repairs at a Mercedes-Benz Center, you'll be reimbursed up to \$300 per day for any documented expenses—for up to three days—for meals, lodging and substitute transportation.

Alternate Transportation

When you bring your vehicle into a Mercedes-Benz Center for servicing during the warranty period, ask about your dealer's Alternate Transportation Program—so you can maintain your busy schedule while we maintain your car.⁷

¹ Roadside Assistance repairs may involve charges for parts, service and towing. Depending on the circumstances, these services may be provided by an outside service, courtesy of Mercedes-Benz Roadside Assistance. ² Please see your dealer for warranty details as well as for terms, conditions and pricing for extended limited warranty options. ³ Whichever comes first. Requires use of 229.5-spec oil and high-performance fleece oil filter. Driver is responsible for monitoring fluid levels and tire pressures between service visits. See Maintenance Booklet for details. The Service Welcome replaces the Mercedes-Benz Maintenance Commitment, which is discontinued as of model year 2005. ⁴ Dealer will inspect tires and set inflation pressure. Follow tire manufacturer's recommendations. ⁵ First year's basic Tele Aid service provided at no additional cost with subscription. Subscription and acquaintance call required for service to be active. Service operates only where cellular and Global Positioning System coverage are available. ⁶ For full details of Sign and Drive services, as well as the Roadside Assistance Program, please see your dealer. ⁷ Certain restrictions may apply. Terms, conditions and dealer participation may vary.

Who cares about being first?

Your neighbor.



Neighborhood watch takes on a whole new meaning

When you own a Mercedes, you'll just have to face up to the fact that people will look, and people will talk. But that's really nothing new, because the world has been fascinated by Mercedes-Benz design as long as there have been Mercedes automobiles. Our secret? We don't style a car to look good for just this year, or even the next few years. Instead, we believe a Mercedes should inspire passion for a lifetime. It's why many of our creations not only become more desirable as time goes by, but some, like the 300SL Gullwing of the 1950s, even become cultural icons. They've been immortalized in the art of Andy Warhol and in music from Janis Joplin to Jay-Z. You'll even find that the CL-Class and CLK-Class are the leaders in a modern renaissance of pillarless coupe design. So it shouldn't surprise you that Mercedes owners often become Mercedes collectors, and that certain models are now worth hundreds of thousands of dollars. And while only the rarest models are likely to reach those kind of values, we think that with its timeless style, your appreciation of your Mercedes will begin almost immediately. And that's something worth looking into.



E 320 Sedan



Who cares about being first?

Every automaker.

Every car on the road is a Mercedes

Wishful thinking on our part? Perhaps. But more important, no matter what kind of vehicle you drive, you're probably enjoying technology that Mercedes-Benz developed first. Since 1886, when we patented the very first automobile, we've been continually testing, designing and innovating to make automobiles better. In fact, Mercedes-Benz has pioneered, patented and introduced thousands of advances in performance, safety and convenience — many of which eventually show up on virtually every automobile. Along the way, we've created items that many might take for granted now, but were revolutionary when they were introduced, including fuel injection, 4-wheel independent suspension — even the honeycomb radiator design of 1901 that still makes efficient engine-cooling possible today. You'll also find state-of-the-art safety features like our **ESP** stability control and emergency-sensing Brake Assist. We're flattered that so many of our competitors adopt our technology. So if you're wondering what all cars will have in the future, all you have to do is see what's on a Mercedes today.

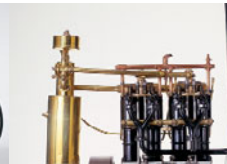
No company has done more to improve the automobile than the one who invented it

In 1886, Karl Benz earned the patent for the first automobile. He went on to earn the patents for the first motorcycle and the first truck, too. Having developed such revolutionary ideas for their time, an ordinary man might have decided to rest on his laurels. But Karl Benz loved machinery – especially automobiles. And he loved to innovate, continually improving and even reinventing his ideas. Over the years, the

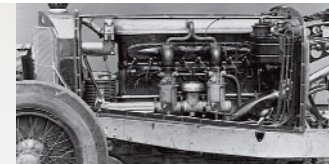
vision, spirit and determination of one man grew to become the defining character of one company – Mercedes-Benz. Whether it's the advancement of performance, safety, durability or convenience, the inquisitive spirit of the man who invented the very first automobile lives in everything we do, even to this day. You might say that Mercedes-Benz has been reinventing the automobile for 119 years.



1886
The first car



1911
The first multivalve engine



1921
The supercharged engine



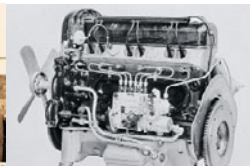
1931
Independent suspension



1936
The first diesel passenger car



1951
The crumple zone



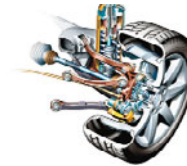
1954
Fuel injection



1971
A patent for the air bag



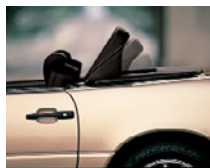
1981
Seat-belt Emergency Tensioning Device (ETD)



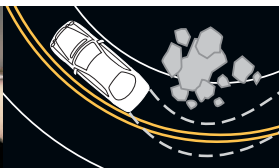
1982
Multilink rear suspension



1985
Electronic traction control



1989
The pop-up roll bar



1995
Electronic Stability Program



1996
Panorama roof



1997
The first compact fuel-cell car



1997
Low-emission SUV



1997
Brake Assist



1997
BabySmart™ system



1997
SmartKey



1997
Touch Start



1998
Head Protection Curtains



1998
10-way air-bag protection



1999.....



1999 Active Body Control

> The most advanced active suspension on the market, ABC uses a system of sensors and electronically controlled high-pressure hydraulics to instantly counteract the forces of vibration, pitch, dive, squat and roll. You can also raise the ride height for added clearance.



1999 Climate-control seat-belt usage sensors

> Seat-belt usage sensors allow the climate control to focus first on occupied seating positions. A perfect example of how Mercedes-Benz systems work together to make things better for you.



1999 Airmatic semi-active suspension

> Airmatic uses electronically controlled air springs to maintain an ideally balanced ride. It also lowers the ride height at higher speeds for improved aerodynamics and fuel efficiency. And automatic 4-wheel level control responds to passenger and cargo loads.



2000 Distronic adaptive cruise control

> The industry's first adaptive cruise control, DISTRONIC monitors the distance of the vehicle ahead to help maintain your preset speed and following distance automatically.¹



2001 Keyless Go

> Keyless Go lets you lock or unlock your vehicle without removing the key from your pocket or purse. Start-up is equally easy: Put your foot on the brake, tap the top of the gearshift, and you're ready to drive off.



2002 Drive-Dynamic front seats

> When you're cornering, air chambers in each side bolster automatically inflate and deflate to help hold you in position. Make a hard left turn, and the right bolster firms up with air. A sharp right, and the left side inflates.



2002 PRE-SAFE

> If, by monitoring the Brake Assist and the Electronic Stability Program, PRE-SAFE[®] senses that an accident is possible, it will take action to better protect you, including tensioning the front seat belts, adjusting the front passenger seat – even closing the sunroof for an imminent rollover.



2002 Twin-turbo V-12 engine

> The recipe for 493 hp and 590 lb-ft of torque includes such impressive technology as two liquid-to-air intercoolers, die-cast alloy engine block, heads and pistons, and magnesium cylinder-head covers.



2002 Sensotronic Brake Control

> The world's first production electrohydraulic braking system uses its genius to improve everyday driving situations. Lift your foot off the accelerator quickly – as you would when making a sudden stop – and Sensotronic sets the brake pads closer to the discs for even quicker response. Turn on the windshield wipers, and Sensotronic periodically and imperceptibly applies the brakes to keep them drier and ready for action.



2003 7-speed automatic transmission

> Another industry first, the 7-speed automatic transmission finds the ideal gear for every situation, while providing smoother, quicker shifts that keep the power coming on strong at virtually any speed.



2004 New high-output, high-efficiency engines

> With the launch of the 2005 SLK, an all-new engine family debuts. In the SLK350, it's a 36-valve DOHC V-6 producing 268 hp and featuring continuously variable intake and exhaust valves, a two-stage intake manifold, innovative tumble flaps in the intake ducts, and alloy heads and block.

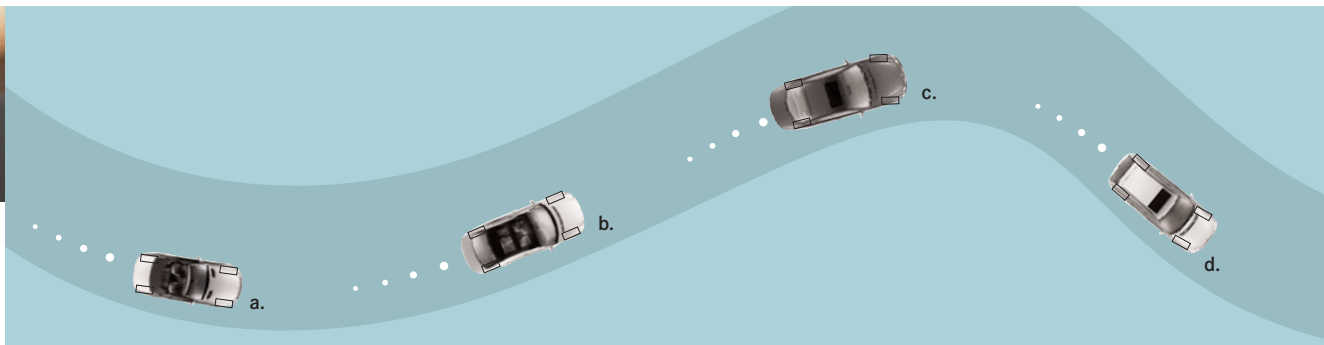
Some features are optional or not available on some models. See model brochure or your dealer for details.

¹ DISTRONIC adaptive cruise control is no substitute for active driving involvement. It does not react to stationary objects, nor recognize or predict the curvature and lane layout of the road or the movement of vehicles ahead, and it can only apply a maximum of 20% of vehicle braking power. It is the driver's responsibility at all times to be attentive to traffic and road conditions, and to provide the steering, braking and other driving inputs necessary to retain control of the vehicle.



Graded on a curve

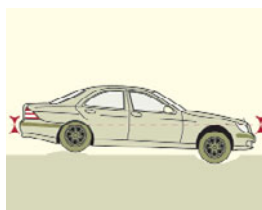
When the road tests the mettle of a vehicle's handling systems, you want nothing less than outstanding performance. That's why every Mercedes-Benz offers industry-leading innovations, such as our pioneering ESP stability control that remains the standard of the industry. Select models employ our Airmatic air suspension that proves a car can give sport-sedan performance without sacrificing a luxurious ride. For true handling honors, look no further than our **Active Body Control (ABC)**—the most advanced active suspension system available—which can virtually eliminate body roll when cornering. And for advanced studies in traction, Mercedes innovations include the revolutionary 4-wheel Electronic Traction System (4-ETS), and the all-season grip of 4MATIC™ all-wheel drive. So while others may hope for a passing grade, we're only happy when we set the curve.



a. **Electronic Stability Program (ESP)**

Every Mercedes enjoys a handling advantage that allows it to react quickly and confidently to unexpected driving situations. It's our **Electronic Stability Program**, which continuously monitors your steering and braking actions while you're cornering and compares them to the actual vehicle path. If it senses the onset of plowing (understeer) or fishtailing (oversteer), ESP brakes individual wheels and/or reduces excess engine power, to help keep you on course. ESP also incorporates traction control to help control wheelspin during acceleration!

1 No system, no matter how sophisticated, can repeal the laws of physics. Performance is limited by available traction, which snow, ice and other conditions can affect. Always drive carefully, consistent with conditions. Best performance in snow is obtained with winter tires.



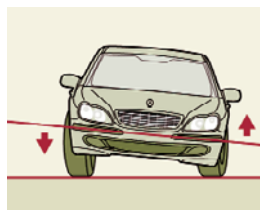
b. **Multilink suspensions and ADS II adaptive damping**

For legendary control, every Mercedes passenger car enjoys 4-wheel multilink suspension² featuring antidive geometry for exceptional poise, even under severe braking. The rear multilink design—a Mercedes innovation—controls rear-wheel movement with outstanding precision, making it ideal for rear-wheel-drive vehicles. Part of our Airmatic air suspension,³ the Adaptive Damping System (ADS II) lets you tailor your driving experience with three selectable suspension modes—two for sport and one for comfort—and continually optimizes ride and handling by individually adjusting each wheel's shock absorber every time the wheel changes its direction of up/down travel.

2 Double wishbone front suspension on E-Class and S-Class models with 4MATIC all-wheel drive. 3 Airmatic and ADS II standard on E500, E55 AMG, S430 and S500 models, and optional on E320 models (except E320 CDI).

4-wheel Electronic Traction System

Our advanced 4-wheel Electronic Traction System (4-ETS) is an innovation in all-wheel traction that can help get your all-wheel-drive Mercedes moving even if only one wheel has grip. If 4-ETS detects the onset of wheelspin, it applies the brakes to the slipping wheel or wheels, to restore the balance of the engine's torque to all four wheels. By simulating the effect of locking the front, center or rear differentials, 4-ETS helps ensure that power is sent to where the traction is—even if that's only one wheel! There are no buttons to push or levers to engage. It's an integral part of the full-time 4-wheel drive and Electronic Stability Program (ESP) of every M-Class and G-Class, and every Mercedes sedan or wagon with 4MATIC all-wheel drive.



c. **Active Body Control (ABC)**

ABC allows you a driving experience you simply cannot find elsewhere, providing an ideal balance of ride and handling, and is capable of cornering with virtually no body roll. ABC uses a system of sensors and electronically controlled high-pressure hydraulics to instantly counteract the forces of vibration, pitch, dive, squat and roll. Self-leveling, automatic-lowering ABC even lets you raise the ride height for added clearance on rutted roads or in deep snow.

Active Body Control (ABC) standard on SL-Class, CL-Class, S55 AMG and S600, and optional on S430 and S500.



d. **4MATIC all-wheel drive**

With 4MATIC, you get the outstanding control of all-wheel drive without sacrificing true sport-sedan driving enjoyment. The system is always engaged and always sending torque to every wheel. With 60% of the overall torque distributed to the rear wheels, crisp steering and the balanced feel of a rear-wheel-drive vehicle are retained, making a 4MATIC Mercedes a joy to drive in any season. And 4MATIC works together with our standard corner-taming ESP, enhancing the all-wheel advantage through curves in rain, snow or even sun.

4MATIC optional on C-Class Luxury models, E-Class (except E320 CDI and E55 AMG), S430 and S500, and standard on E500 4MATIC Wagon.

Who cares about being first?

Lifesavers.

When you don't have a second to lose

The streets of Copenhagen are narrow, twisty and often made of cobblestone. They're also the lifeline for the Danish Ambulance Service, which has made over 12,500 emergency responses in their Mercedes SUVs. Working as a team, driver Torben Bang Christensen, Dr. Annemarie Sørensen and their ML 320 leave the hospital hundreds of times each year with one goal in mind – being first on the scene of a medical emergency. Sometimes they travel at high speed through those narrow streets. And sometimes they need to use the sidewalk, or cut across parks – whatever it takes. Dodging cars, cyclists and pedestrians along the way. Even the weather throws down its own challenges, including sleet, rain and heavy winter snow. And no matter what obstacles may come their way, with its durability, responsiveness and vault-like security, both Annemarie and Torben agree: “When we drive in the ML, we feel very safe.”





116 heads of state

Wolfgang Wöstendieck is a chauffeur who drove for the German government for many years. In his tenure, he had the honor of carrying 116 heads of state, including presidents, premiers and prime ministers. And regardless of title, they all enjoyed the security, luxury and serenity of his Mercedes-Benz 600 "Pullman" limousine — even when they needed to travel at speeds approaching 120 mph. These magnificent automobiles were made to order in the '60s and '70s, and many still carry the world's dignitaries from place to place today. Reunited with one of the 600s he drove — now a cherished museum piece — Wolfgang's fondness for the car remains strong. Immaculately dressed and soft-spoken, he proudly shows the car's special amenities such as the reclining rear seats or the soft amber interior lighting. When it's time to go, it shouldn't surprise you that Wolfgang drives off in his own Mercedes-Benz. After all, he wouldn't dream of treating the dignitaries in his life to anything less.



Tele Aid wrench button

Press the wrench button to request our legendary Roadside Assistance. You'll be connected to a trained professional who knows your location, the model of your car, even its color.²



Tele Aid SOS button

When trouble strikes, help for you or others is just the push of a button away. The SOS button will connect you to Mercedes-Benz emergency response personnel who can summon paramedics and police, and call your on-file emergency contacts. And you can feel secure knowing that if your air bag deploys, the system will automatically call for help, and will alert us to your location by satellite.²

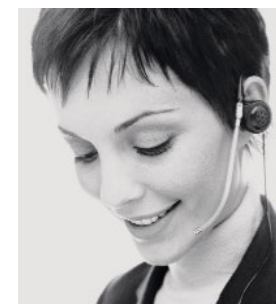
Lifetime Roadside Assistance

The first of its kind, the Mercedes-Benz Roadside Assistance Program is still the only one that remains in effect for the entire life of the vehicle. Our Roadside Assistance technicians are accomplished problem-solvers who can draw on years of experience and training to get you back on the road as quickly as possible. And if that isn't impressive enough, our legendary Roadside Assistance service includes Sign and Drive, which will bring you some fuel if you've run out, replace a flat tire with your spare, or jump-start your car if the battery is dead. All at no charge, and all for as long as you're driving a Mercedes-Benz — even somebody else's. And while this is more than any other manufacturer provides, when it comes to your peace of mind, we wouldn't consider doing any less!¹



Tele Aid i-button

Information, please. Press the *i*-button and the Mercedes-Benz Customer Assistance Center can help you get answers to vehicle questions or locate your nearest Mercedes-Benz dealer. To further enhance your ownership experience, you can also use the *i*-button to connect to optional services such as Route Assistance and Traffic Information.²



Traffic Information and Route Assistance

An option of your Tele Aid subscription features an automated voice menu to give you hands-free access to information you need.

Tele Aid's Traffic Information service offers real-time, voice-delivered traffic reports that are based on your vehicle's current location — within a 5-mile radius, or along any of up to five regular commutes that you program at our website. Traffic reports are available in over 100 cities and can be updated every minute.

Unlimited, nationwide operator-delivered Route Assistance can help get you to your destination with a minimum of wasted time.

¹ Roadside Assistance repairs may involve charges for parts, service and towing. Vehicle must be accessible from main roads. Depending on the circumstances, these services may be provided by an outside service, courtesy of Mercedes-Benz Roadside Assistance. For models factory-equipped with no spare tire, Roadside Assistance will attempt to reinflate a flat tire after using the vehicle's Tirefit puncture sealant. For full details of Sign and Drive services, as well as the Roadside Assistance Program, please see your dealer. ² First year's basic Tele Aid service provided at no additional cost with subscription. Subscription and acquaintance call required for service to be active. Tele Aid operates only where cellular and Global Positioning System coverage are available. See your dealer for details of telematics services.

SLK-CLASS		SPECIFICATIONS (1 OF 2)	
		SLK 350 COUPE/ROADSTER	SLK 55 AMG COUPE/ROADSTER¹
ENGINE			
Engine type Construction	3,498-cc DOHC 24-valve 90° V-6. High-pressure die-cast alloy cylinder block. Alloy heads. Counter-rotating balance shaft		5,439-cc AMG-built SOHC 24-valve 90° V-8. High-pressure die-cast alloy cylinder block. Reinforced crankshaft and valvetrain. Alloy heads. Lightweight camshafts. Reinforced engineblock, oil pan structure, pistons, connecting rods and crankshaft
Net power	268 hp @ 6,000 rpm		355 hp @ 5,750 rpm
Net torque	258 lb-ft @ 2,400–5,000 rpm		376 lb-ft @ 3,500 rpm
Compression ratio	10.7:1		11.0:1
Induction	Chain-driven dual overhead camshafts with continuously variable intake and exhaust valve timing. Magnesium 2-stage resonance intake manifold increases intake runner length at lower rpm for improved response. Electropneumatic turbulence flaps at start of intake path help increase intake airflow speed at midrange rpm for greater swirling and stronger, more complete combustion		Magnesium 2-stage resonance intake manifold increases intake runner length at lower rpm for improved response
Fuel and ignition system	ME 9.7 engine management. Integrated sequential multipoint fuel injection and ignition includes individual cylinder control of fuel spray, spark timing, and antiknock. Electronic throttle. One high-energy ignition coil and spark plug per cylinder. 100,000-mile spark plug intervals		ME 2.8 engine management. Integrated sequential multipoint fuel injection and phased twin-spark ignition includes individual cylinder control of fuel spray, spark timing and phase, and antiknock. Electronic throttle. Two high-energy ignition coils and two spark plugs per cylinder. 100,000-mile spark plug intervals
Fuel requirement	Premium unleaded gasoline, 91 pump octane. Fuel tank capacity: 18.5 gal/70.0 liters (with 2.6-gal/10.0-liter reserve)		
Exhaust system	Sport-tuned with dual mufflers and polished chrome tips		Dual AMG low-backpressure with four polished stainless-steel tips
DRIVETRAIN			
Manual transmission	Standard fully synchronized 6-speed with direct-action short-throw shifter and clutch-starter interlock		Not available
Automatic transmission	Optional 7-speed automatic		Standard AMG-enhanced 7-speed automatic
Driver-adaptive control	Electronically controlled shifting. Driver-adaptive programming adjusts shift points to the driver's current driving style.		
Touch Shift	Touch Shift allows driver to manually downshift and allow upshifts by nudging the shift lever left or right from the Drive position.		
Shift into Optimum Gear	Shift into Optimum Gear programming allows one-touch selection of the best gear for maximum acceleration or engine braking by holding the shift lever to the left of Drive for one second.		
Comfort mode	Driver-selectable Comfort mode starts vehicle moving in 2nd gear or a second Reverse gear, and upshifts at lower rpm, to help improve control on slippery surfaces.		
Instrument-cluster display	Selected gear range and Sport/Comfort mode		Selected gear range and Sport/Comfort/Manual mode
AMG transmission enhancements	Not available		Standard
	AMG SpeedShift™ programming provides up to 35% faster gear changes, automatically downshifts during braking, prevents unwanted upshifting while cornering, offers one-touch selection of the best gear for maximum acceleration (Shift into Optimum Gear), and features torque converter lockup in all forward gears.		
	Fingertip manual mode allows direct-access shifting through forward gears via buttons on back of upper steering-wheel spokes (left button downshifts, right button upshifts) or via Touch Shift feature of shift lever, and will automatically intervene only to select 1st gear when the vehicle stops. In Standard and Comfort modes, the steering-wheel buttons operate the Touch Shift feature		
Fingertip shift control	Included with AMG Sport Package² Fingertip shift control allows driver to operate Touch Shift feature via rocker-type buttons on back of upper steering-wheel spokes (both buttons can upshift and downshift)		Not available
Drive configuration	Rear-wheel drive. Rear axle ratio: 3.27:1		Rear-wheel drive. Rear axle ratio: 3.06:1
Electronic Stability Program	ESP compares the driver's intended course, via steering and braking inputs, to the vehicle's response, via lateral acceleration, rotation (yaw) and individual wheel speeds. ESP then brakes individual front or rear wheels and/or reduces excess engine power as needed to help correct understeer (plowing) or oversteer (fishtailing). ESP also integrates all-speed traction control, which senses drive-wheel slip under acceleration and individually brakes the slipping wheel or wheels, and/or reduces excess engine power, until control is regained³		
PERFORMANCE	Manual	Automatic	Automatic
Acceleration, 0–60 mph⁴	5.4 seconds	5.5 seconds	4.9 seconds
Fuel economy, EPA⁵ highway estimate⁶	18 mpg 25 mpg	19 mpg 25 mpg	Information not available. See your dealer
1 Delayed availability. See your dealer.		5 2005 EPA estimated fuel economy. Compare the estimated mpg to the estimated mpg of other vehicles. You may get different mileage depending on how fast you drive, weather conditions and trip length.	
2 Optional.		6 Your actual highway mileage will probably be less than the highway estimate.	
3 No system, no matter how sophisticated, can repeal the laws of physics or overcome careless driving actions. Please always wear your seat belt.		4 Stated rates of acceleration are based upon AMCI's test-track results for SLK 350 and manufacturer's track results for SLK 55 AMG, and may vary depending upon model, environmental and road surface conditions, driving style, elevation and vehicle load.	

SLK-CLASS		SPECIFICATIONS (2 OF 2)	
SLK 350 COUPE/ROADSTER		SLK 55 AMG COUPE/ROADSTER¹	
SUSPENSION			
Front	Independent 3-link with coil springs over gas-pressurized shock absorbers, lowered ride height, antidive geometry and stabilizer bar		
Rear	Independent 5-arm multilink with separate coil springs and shock absorbers, lowered ride height, geometry for antisquat and alignment control, and stabilizer bar		
Sport suspension	Optional lowered sport suspension with shorter, firmer coil springs and sport-tuned shock absorbers	Standard AMG sport suspension with AMG-calibrated coil springs and shock absorbers	
STEERING			
Configuration	Rack-and-pinion with integrated hydraulic damper. 2.9 steering-wheel turns, lock-to-lock. Turning circle: 34.5 ft/10.5 m curb-to-curb		
Power assist	Standard: Constant assist With Premium Package²: Vehicle speed-sensing variable assist	Vehicle speed-sensing variable assist	
WHEELS / TIRES			
Wheels, aluminum-alloy	Standard: 10-spoke design, 7.5Jx17 front—8.5Jx17 rear With AMG Sport Package²: AMG thin-spoke monoblock design, 7.5Jx17 front—8.5Jx17 rear	Polished AMG multispoke design, 7.5Jx18 front—8.5Jx18 rear³	
Tires, steel-belted radial	225/45 ZR17 front— 245/40 ZR17 rear, high performance⁴	225/40 ZR18 front— 245/35 ZR18 rear, high performance³	
BRAKES			
Brake system	Dual-circuit power-assisted 4-wheel disc		Dual-circuit power-assisted 4-wheel disc
Brake discs, front—rear	13.0" perforated and ventilated—11.4" solid		13.4" perforated and ventilated—13.0" ventilated
Brake calipers, front—rear	4-piston fixed—dual-piston fixed		AMG 6-piston fixed—AMG 4-piston fixed
Antilock Braking System	ABS senses impending wheel lockup under heavy braking and pumps the front brakes individually or the rear brakes together (to help maintain stability) as needed up to 30 times per second, to prevent lockup and maintain steering ability		
Brake Assist	Brake Assist senses emergency braking via the speed at which the driver presses the brake pedal and immediately applies maximum available power boost, potentially reducing the overall stopping distance by eliminating the delay caused by a common human tendency not to brake hard enough, soon enough. Letting up on the brake pedal releases Brake Assist⁵		
DIMENSIONS⁶		SLK 350	SLK 55 AMG
Wheelbase	95.7 in/2,430 mm	95.7 in/2,430 mm	
Overall length	160.7 in/4,082 mm	160.9 in/4,087 mm	
Overall height	51.1 in/1,298 mm	50.0 in/1,271 mm	
Overall width	70.4 in/1,778 mm	70.6 in/1,794 mm	
Track, front—rear	60.1 in/1,526 mm—61.0 in/1,549 mm	60.0 in/1,524 mm—61.0 in/1,549 mm	
Coefficient of drag	0.34	0.35	
Curb weight	3,231 lb/1,465 kg (with manual transmission)	3,397 lb/1,540 kg	
Headroom	37.9 in/965 mm	37.9 in/965 mm	
Legroom	42.5 in/1,079 mm	42.5 in/1,079 mm	
Hiproom	54.6 in/1,387 mm	54.6 in/1,387 mm	
Shoulder room	52.2 in/1,326 mm	52.2 in/1,326 mm	
Trunk capacity	9.8 cu ft/277 liters (top up) 6.5 cu ft/185 liters (top down)	9.8 cu ft/277 liters (top up) 6.5 cu ft/185 liters (top down)	
<div><div><div>1 Delayed availability. See your dealer. 2 Optional. 3 AMG 18" wheels and accompanying high-speed-rated tires provide substantially increased treadwear and reduced ride comfort compared to H-rated tires. Serious wheel and tire damage may occur if the vehicle is operated on rough or damaged road surfaces or upon encountering road debris or obstacles. 4 Z-rated tires are optimized for performance driving and may provide reduced ride comfort, increased tire noise, substantially increased treadwear and greater susceptibility to damage compared with H-rated tires. 5 Braking effectiveness also depends on proper brake system maintenance, and tire and road conditions. 6 Figures are with top up unless listed otherwise.</div></div></div>			

SLK 350
SLK 55 AMG¹

EXTERIOR APPEARANCE

- – Formula One-style nose with color-keyed grille crossfins
- ■ Formula One-style nose with black grille crossfins
- ■ AMG-design Formula One-style front air dam with mesh air intakes, side skirts and rear apron. Color-keyed AMG-design rear lip spoiler

EXTERIOR FEATURES

- ■ Electrohydraulic retractable steel hardtop. One button lowers or raises top and all four side windows. Rear window pivots 150° while top folds
- ■ Trunk lid opens at front for top retraction and at rear for cargo access
- ■ Dual automatically heated power mirrors
- ² ■ Auto-dimming left-side mirror. Parking-assist right-side mirror can tilt down upon shifting to Reverse
- ■ Electrically heated rear window with auto-shutoff based on time, driving speed and outside temperature
- ■ Dual aero-blade windshield wipers
- ■ Heated windshield washer nozzles

EXTERIOR LIGHTING

- ■ Variable-focus projector-beam halogen headlamps with clear high-impact polycarbonate lenses. Halogen front foglamps, in front apron. Single red rear foglamp, in left taillamp cluster
- ■ Driver-selectable light-sensing headlamps can be set to automatically illuminate at nightfall, and when entering dark tunnels or parking garages
- ■ Driver-programmable Daytime Running Lamps
- – Red/white rear lamps with dual-intensity LED brake and taillamps
- ■ Smoked rear lamps with dual-intensity LED brake and taillamps
- ■ Automatic lamp substitution uses a nearby lamp if a critical bulb fails
- ■ Touch Turn Signals flash three times with one touch of turn-signal lever. Auxiliary LED turn signals in side mirror housings

■ STANDARD

□ OPTIONAL

– NOT AVAILABLE

SLK 350
SLK 55 AMG¹

LOCKING / SECURITY

- ■ SmartKey uses an electronic code to unlock steering column and ignition. Removing SmartKey from ignition disables engine computer
- ■ SmartKey integrates remote door lock/unlock buttons, trunk opener, removable valet key, and panic alarm. Driver may selectively unlock only the driver's door and fuel filler, or both doors plus the trunk and fuel filler
- ■ SmartKey remote locking uses both infrared and radio-frequency signals for improved range, and rolling-code signal for protection from cloning
- ² ■ SmartKey infrared-remote opening/closing of windows
- ² ■ SmartKey infrared-remote operation of retractable hardtop
- ■ Driver-programmable user-recognition feature links each SmartKey to driver's preferences for driver's seat memory settings³ (all three presets), various climate control settings, and programmable vehicle preferences
- ■ Driver-programmable driveaway locking can automatically lock the doors when the car reaches 9 mph
- ■ Night security illumination uses the car's exterior lights to help illuminate a path after parking. Driver-programmable intervals of up to 60 seconds
- ■ Locator lighting can help light a return path when the car is remote-unlocked in darkness. Unlocking car activates illuminated entry system
- ■ Automatic anti-theft alarm system with remote panic feature
- ■ Emergency trunk release, located inside trunk and illuminated for 60 minutes after trunk lid is closed
- ■ Tele Aid GPS-based Stolen Vehicle Recovery allows law enforcement agencies to track and recover stolen vehicle. Remote Door Unlock allows owner to have doors automatically unlocked in the event the SmartKey becomes locked inside vehicle. Automatic Alarm Notification alerts Mercedes-Benz to contact vehicle owner if anti-theft alarm sounds⁴

SLK 350
SLK 55 AMG¹

INTERIOR FEATURES

- ■ Multifunction steering wheel provides controls for audio system, optional phone, and multifunction display (see Instrumentation)
- ² ■ Fingertip shift buttons behind steering-wheel spokes
- ■ Power front windows, with one-touch express-up/down. One-button raising/lowering of all four windows via power top switch
- ■ Fine-mesh wind deflector attaches to roll bars
- – 4-way (tilt/telescoping) manual steering column
- ² ■ 4-way power steering column, position linked to driver's seat memory, with driver-programmable easy-exit feature
- ■ Electronic cruise control
- ■ Delayed-shutoff courtesy lamps. Dual front reading lamps
- ² ■ Automatic ambient interior lighting of console and footwells. Entrance lamps in doors. Illuminated console storage. Illuminated vanity mirrors
- ² ■ Auto-dimming rearview mirror
- ■ Enclosed storage in console and on rear cabin wall. Illuminated glovebox. Pockets in both doors. Parcel net in right front footwell
- ■ Retractable dual cupholder
- ■ Illuminated, carpeted trunk. Movable rigid cover allows increased storage capacity when hardtop is up

¹ Delayed availability. See your dealer.² Also available or only available as part of an Option Package. See Options and Packages listings.³ When so equipped.⁴ First year's basic Tele Aid service provided at no additional cost with subscription. Subscription and acquaintance call required for service to be active. Service operates only where cellular and GPS coverage are available. Owner must authorize stolen vehicle tracking by providing a personal PIN code and file a police report. See dealer for details of telematics services.

SLK 350
SLK 55 AMG¹

CLIMATE CONTROL

- ■ Dual-zone CFC-free climate control with dual rotary automatic temperature controls, and manual control of blower speed and airflow distribution
- ■ Dash-top diffuser vent
- ■ Electrostatic dust/pollen filter and activated charcoal pollutant filter
- ■ Tunnel mode offers one-touch closing of all windows and cabin air intake by holding the air-recirculation button
- ■ REST mode can ventilate cabin or help keep cabin warmer using residual heat for up to 30 minutes after car is turned off

SEATING

- – 8-way manual sport seats with Silver-painted magnesium trim
- ■ AMG-design sport seats with Silver-painted magnesium trim
- ² ■ 8-way power seats, each with 3-position memory. Driver's seat memory includes steering column and outside mirror positions
- ² ■ Heated seats

UPHOLSTERY / TRIM

- – Premium leather upholstery on seats, head restraints and door inserts. Leather-trimmed 3-spoke sport steering wheel and shift knob. Silver trim on doors, dash and console
- ■ AMG-design two-tone Nappa leather upholstery. AMG-design leather-trimmed 3-spoke sport steering wheel and shift knob. AMG-design aluminum trim on dash and console with Silver trim on doors
- ■ Rubber-studded brushed aluminum pedals
- ■ Stainless-steel door sill trim (with AMG insignia on SLK 55 AMG)
- ■ Velour carpeting and floor mats (exclusive AMG floor mats on SLK 55 AMG)

■ **STANDARD**
□ **OPTIONAL**
– **NOT AVAILABLE**

SLK 350
SLK 55 AMG¹

AUDIO / COMMUNICATION

- ■ AM/FM stereo/weatherband radio with in-dash single-CD player
- ■ In-dash audio system operating panel integrates controls and displays for radio, CD player, and optional 6-CD changer and digital telephone
- ■ Fiber-optic network offers precise, high-speed communication among components. Factory preparation for optional CD changer and cellular phone, and SIRIUS Satellite Radio⁴ prewiring, using fiber-optic network
- ■ Tele Aid system uses GPS satellites plus a cellular link to provide 24-hour live assistance for emergency aid (SOS button), information (*i*-button) or Roadside Assistance (wrench button). Tele Aid basic services include Automatic Collision Notification, Stolen Vehicle Tracking, Remote Door Unlock service and Dealer Connect⁵

INSTRUMENTATION

- ■ Electronic analog speedometer, tachometer, fuel gauge and quartz clock
- – Black gauges with white markings. Silver instrument tubes
- ■ AMG-design gauges, black with white markings and silver accents, including 200-mph speedometer.⁶ Black instrument tubes
- ■ Digital display for odometer and Touch Shift gear/mode selection³
- ■ Multifunction display in instrument cluster, scrolled via steering-wheel controls to operate and display various menus and vehicle features: Resettable trip meter and outside temperature indicator. Digital speed, coolant temperature, Maintenance System, and engine oil-level check (SLK 55 AMG). Radio station, CD player, CD changer.³ Navigation system route guidance.³ Vehicle reminder and malfunction messages. Driver-programmable settings for displays, lighting, vehicle and convenience features. Trip computer. Mobile phone book³
- ■ Mercedes-Benz Maintenance System Plus displays distance remaining to next basic maintenance service, indicates type of service due, and provides automatic reminder feature when service interval draws near. System also monitors brake-pad wear
- ■ Audible reminders and messages for open door; exterior lamp failure; low fuel, engine oil, coolant and washer fluid; and to release parking brake, switch off headlights and remove ignition key

SLK 350
SLK 55 AMG¹

RESTRAINT SYSTEMS

- ■ Integrated Restraint System: Driver and passenger each provided with a front air bag, knee air bag, side-impact head/thorax air bag, and 3-point seat belt with Emergency Tensioning Device (ETD) and belt force limiter⁷
- ■ Adaptive dual-stage front air bags are deployed in response to frontal impact severity exceeding a preset threshold⁷
- ■ ETDs deploy in a front or rear impact exceeding a preset threshold of severity, or certain rollovers. ETD will not deploy if seat belt is unfastened
- ■ Automatic Collision Notification engages Tele Aid SOS function if an air bag or ETD deploys⁵
- ■ Front seat belts include lower points attached to seat frames
- ■ Dual height-adjustable head restraints
- ■ Dual fixed-position heat-treated micro-alloy steel roll bars⁸

¹ Delayed availability. See your dealer.

² Also available or only available as part of an Option Package. See Options and Packages listings.

³ When so equipped.

⁴ See dealer for availability details. While the SIRIUS network of satellite and terrestrial antennas provides nearly seamless service throughout the contiguous U.S., SIRIUS service may be unavailable or interrupted for a variety of reasons, including environmental or topographic conditions; in certain locations such as tunnels, parking garages, or within or next to large buildings; or near other technologies that can interfere with the SIRIUS signal. Programming subject to change. Not available in Alaska, Hawaii or Puerto Rico.

⁵ First year's basic Tele Aid service provided at no additional cost with subscription. Subscription and acquaintance call required for service to be active. Service operates only where cellular and GPS coverage are available. Owner must authorize stolen vehicle tracking by providing a personal PIN code and file a police report. See dealer for details of telematics services.

⁶ Top speed electronically limited to 155 mph. Obey all speed laws.

⁷ **WARNING: THE FORCES OF A DEPLOYING AIR BAG CAN CAUSE SERIOUS OR FATAL INJURY TO A CHILD UNDER AGE 13. A CHILD UNDER 13 MUST NOT BE A PASSENGER IN THIS VEHICLE UNLESS THE CHILD IS BELTED INTO AN APPROPRIATE, PROPERLY INSTALLED BABYSMART-COMPATIBLE CHILD SEAT AND THE "PASSENGER AIR BAG OFF" INDICATOR REMAINS ILLUMINATED. SEE OPERATOR'S MANUAL FOR ADDITIONAL WARNINGS AND INFORMATION ON AIR BAGS, SEAT BELTS AND CHILD SEATS.**

⁸ The roll bar system is designed to enhance the level of rollover protection compared to an open vehicle without one. No system, no matter how sophisticated, can eliminate the chance of injury in an accident. Please always wear your seat belt.

SLK 350
SLK 55 AMG¹

INDIVIDUAL OPTIONS

- ■ 7-speed automatic transmission with Touch Shift control
- ² ■ Lowered sport suspension (AMG sport suspension on SLK 55 AMG)
- ² ■ Heated seats
- ² □ AIRSCARF neck-level heating system
- ² □² Integrated single-feed 6-disc CD changer, mounted in glovebox
- □ SIRIUS Satellite Radio equipment³
- ² □² DVD-based GPS navigation system, with map database for the contiguous U.S., Hawaii and Canada on a single DVD.⁴ Dedicated DVD drive in trunk. (Dealer-installed accessory; requires Entertainment Package)
- □ Hands-Free Communication System. (Requires accessory phone handset and cradle, sold separately. See your dealer for selection)
- □ Metallic paint

■ STANDARD
□ OPTIONAL
– NOT AVAILABLE

SLK 350
SLK 55 AMG¹

OPTION PACKAGES

- – **AMG Sport Package:** 17" AMG 5-spoke alloy wheels. AMG-design front air dam with mesh air intakes, side skirts and rear apron.⁵ Lowered sport suspension. Steering-wheel shift buttons (with automatic transmission)⁵
- ■ **Comfort Package:** 8-way power seats, each with 3-position memory. 4-way power steering column. Driver's seat memory includes steering column and outside mirror positions
- – **Trim Package:** Polished Vavona wood trim on dash, doors, steering wheel and handbrake
- □ **Lighting Package:** Bi-Xenon low- and high-beam headlamps. Corner-illuminating front foglamps (not included on SLK 55 AMG or with AMG Sport Package). Heated headlamp washers
- □ **Entertainment Package:** 380-watt harman/kardon® LOGIC7® digital surround sound system with 11 speakers and 7.1-channel amplifier. Integrated 6-disc CD changer, mounted in glovebox. COMAND Cockpit Management and Data system integrating AM/FM stereo/weatherband radio, in-dash single-CD player, controls for CD changer and phone, and a 6.5" color-LCD in-dash screen with ten mode-dependent soft keys alongside screen for easy access to commands and on-screen menus
- □ **Entertainment Package with Navigation:** All items in Entertainment Package (above), plus DVD-based navigation system (see Individual Options, above left)⁴
- – **Heating Package:** Heated seats.⁵ AIRSCARF neck-level heating system
- □ **Premium Package:** Speed-sensitive power steering.⁵ Rain-sensing intermittent wipers. Auto-dimming left-side and inside rearview mirrors.⁵ SmartKey infrared-remote window and hardtop operation.⁵ Integrated 3-button garage door control, compatible with HomeLink® components and some other systems. Automatic ambient interior lighting of console and footwells.⁵ Entrance lamps in doors.⁵ Illuminated console storage.⁵ Illuminated vanity mirrors.⁵ Digital dual-zone automatic climate control with sun sensor, and humidity/dewpoint sensor (helps reduce window fogging in humid weather and helps prevent overdrying of cooled air)
- – **Run-flat Tire Package:** Mercedes-Benz extended-mobility tires with low-pressure warning system (indicated in multifunction display)¹

SLK 350
SLK 55 AMG¹SLK-CLASS *designo* EDITIONS

- ⁴ □ **Espresso Edition:**
designo Mocha Black metallic paint.
Black interior with *designo* Sand Nappa leather and Natural Poplar wood trim.
Sand Nappa leather trim on roll bars.
Black *designo* floor mats
- ⁴ □ **Graphite Edition:**
designo Graphite metallic paint.
Black interior with *designo* Graphite Nappa leather and Natural Poplar wood trim.
Graphite Nappa leather trim on roll bars.
Black *designo* floor mats
- ⁴ □ **Chablis Edition:**
designo Chablis metallic paint.
Black interior with *designo* Chablis Nappa leather and Natural Poplar wood trim.
Chablis Nappa leather trim on roll bars.
Black *designo* floor mats

¹ Delayed availability. See your dealer.² Also available or only available as part of an Option Package. See Options and Packages listings.³ See dealer for availability details. While the SIRIUS network of satellite and terrestrial antennas provides nearly seamless service throughout the contiguous U.S., SIRIUS service may be unavailable or interrupted for a variety of reasons, including environmental or topographic conditions; in certain locations such as tunnels, parking garages, or within or next to large buildings; or near other technologies that can interfere with the SIRIUS signal. Programming subject to change. Not available in Alaska, Hawaii or Puerto Rico.⁴ DVD-ROM maps do not cover all areas nor all routes within an area.⁵ Standard on SLK 55 AMG.⁶ SLK 350 *designo* editions require heated seats or Heating Package.