



Mercedes-Benz

# SUVs

2008

R-CLASS M-CLASS GL-CLASS G-CLASS



# A family you should know.

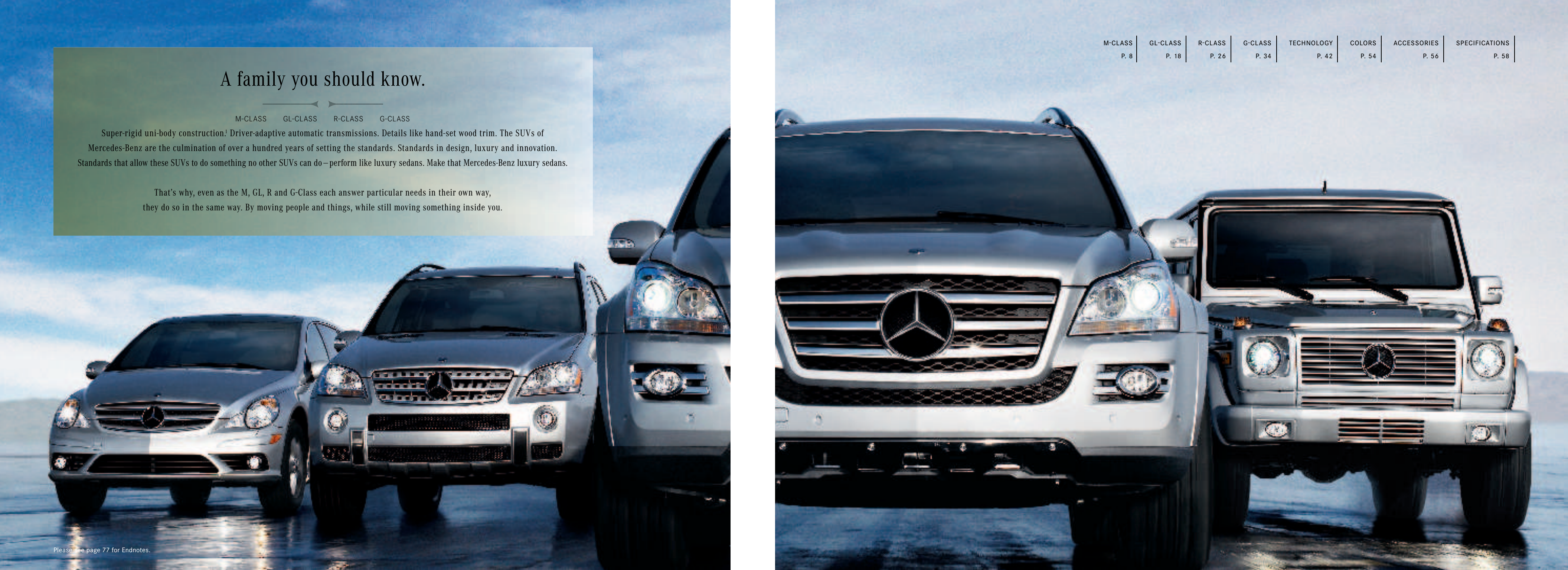
M-CLASS GL-CLASS R-CLASS G-CLASS

Super-rigid uni-body construction.<sup>1</sup> Driver-adaptive automatic transmissions. Details like hand-set wood trim. The SUVs of Mercedes-Benz are the culmination of over a hundred years of setting the standards. Standards in design, luxury and innovation. Standards that allow these SUVs to do something no other SUVs can do—perform like luxury sedans. Make that Mercedes-Benz luxury sedans.


That's why, even as the M, GL, R and G-Class each answer particular needs in their own way, they do so in the same way. By moving people and things, while still moving something inside you.

Please see page 77 for Endnotes.

M-CLASS	GL-CLASS	R-CLASS	G-CLASS	TECHNOLOGY	COLORS	ACCESSORIES	SPECIFICATIONS
P. 8	P. 18	P. 26	P. 34	P. 42	P. 54	P. 56	P. 58







## Safety. It's a matter of brains, as well as brawn.

Size matters. But only so much. That's why every Mercedes-Benz SUV is equipped with a variety of safety innovations. Each has a frame constructed with High-Strength/Low-Alloy steel. Each has crumple zones – an innovation we pioneered – to absorb and deflect the force of a collision. And every outboard seat enjoys air-bag protection – in most cases, multiple-air-bag protection.

Intelligent technologies take safety even further. Our Electronic Stability Program senses wheelspin or extreme understeer (plowing) or oversteer (fishtailing), adjusting power and braking to help correct the situation.<sup>2</sup> Additional safety systems – Brake Assist and a rollover sensor, for instance – are also found on every Mercedes-Benz SUV. In fact, it is our decades of safety leadership that help explain why the ML 350 received a 5-Star Crash Safety Rating from the National Highway Transportation Safety Administration in addition to being rated a Top Safety Pick by the Insurance Institute of Highway Safety. And why the 2007 GL 450 was named “Sport/Utility of the Year™” by *Motor Trend*.



A high-angle, front-quarter view of a red Mercedes-Benz GL550 SUV driving on a paved road. The car is moving towards the left, with a blurred background of a dry, hilly landscape under a clear sky. The car's front grille, headlights, and side mirrors are clearly visible.

## Each cleverly designed to make you think you're driving a luxury sedan.

Like our sedans, Mercedes-Benz SUVs feature uni-body construction! The result is a comfortable, responsive, car-like ride. In addition, technologies like 4MATIC™ 4-wheel drive with our 4-wheel Electronic Traction System – going to all four wheels individually – help keep the vehicle headed where you want it, in weather both good and not-so-good.<sup>2</sup>

The interiors of our SUVs are also designed to perform, each being as versatile as it is spacious. For example, seats that fold flat in a variety of combinations make it easy to move people and things in a variety of combinations.

A choice of engines also makes driving our SUVs particularly pleasurable. Along with powerful – yet efficient – 6- and 8-cylinder gasoline powerplants, Mercedes-Benz CDI diesel engines are also available.<sup>3</sup> And if you want to feel unstoppable, you can choose from two AMG models – the 503-horsepower ML 63 or the 493-horsepower G 55.





## Take comfort in over a century of craftsmanship.



From their bold lines and aggressive stances to their detail-filled interiors, Mercedes-Benz SUVs are a luxurious driving experience. Dual-zone and available 3-zone climate control create truly individual comfort zones, as do cupholders and armrests for every passenger. Each features power-adjustable front seats, wood trim and optional heated seats.

Optional 2nd-row entertainment systems,<sup>3</sup> along with generous legroom, ensure that every seat is the best seat in the house. In addition, seats that fold flat and elegant labor-savers like an optional automatic power liftgate,<sup>3</sup> as well as 12-volt outlets, create cabins that are as versatile as they are luxurious.





# M-CLASS

Engine ML 320 CDI ML 350 ML 550 ML 63 AMG	3.0-liter turbocharged V-6 diesel 3.5-liter V-6 5.5-liter V-8 AMG-built 6.3-liter V-8
Power ML 320 CDI ML 350 ML 550 ML 63 AMG	215 hp @ 4,000 rpm 268 hp @ 6,000 rpm 382 hp @ 6,000 rpm 503 hp @ 6,800 rpm
Torque ML 320 CDI ML 350 ML 550 ML 63 AMG	398 lb-ft @ 1,600–2,400 rpm 258 lb-ft @ 2,400–5,000 rpm 391 lb-ft @ 2,800–4,800 rpm 465 lb-ft @ 5,200 rpm
Drive configuration ML 320 CDI ML 350 ML 550 ML 63 AMG	Standard 4-wheel drive. Standard 4-wheel drive. Standard 4-wheel drive. 4MATIC™ 4-wheel drive with 40/60 front/rear torque split.
Towing capacity <sup>4</sup>	7,200 lbs (Class III)
Passenger seating	5 adults.
Cargo capacity <sup>6</sup> (2nd row folded flat)	72.4 cu ft

## M-Class. Utility, luxury and security. Naturally.

ML 320 CDI<sup>6</sup>   ML 350   ML 550   ML 63 AMG

The 2008 M-Class offers headroom and legroom that are the envy of mid-sized SUVs, as well as a variety of cargo and equipment configurations. The four engine choices are each mated to a super-smooth, super-efficient 7-speed automatic transmission and each model comes with a wealth of standard features. For example, AMG bodystyling, wheels, running boards and a sunroof can be found on the ML 550. The ML 350 and ML 320 CDI also come with 19" alloy wheels,<sup>7</sup> chrome accents and square chrome exhaust tips. And every M-Class comes with Mercedes-Benz leadership in engineering, innovation and safety.

ML 350 shown in optional Pewter metallic paint.  
Please see page 77 for Endnotes.



# M-CLASS

## Dynamic performance.

With more pulling power than most V-8s, the clean, quiet ML 320 CDI's diesel-powered V-6 lets loose 398 lb-ft of torque right where you want it. For towing. For merging into traffic. And it does so while getting up to 30% better fuel economy than comparable gasoline engines. Likewise, the 3.5-liter V-6 in the ML 350 is both powerful and fuel-efficient. At the V-8 end of the lineup, the 382-horsepower ML 550 sets new standards for smooth acceleration and torque. And the ML 63 AMG, with 503 horsepower and an AMG-enhanced version of the M-Class's 7-speed automatic transmission, performs feats even many sports cars can't match, such as a 4.8-second<sup>8</sup> 0-to-60-mph time.

Solid uni-body construction and 4MATIC™ 4-wheel drive with our 4-wheel Electronic Traction System give the M-Class the controlled, stable manners of a Mercedes-Benz sedan. And even when the pavement stops, the M-Class doesn't: robust tires, generous ground clearance and a 23" fording capability<sup>9</sup> create a vehicle designed to be comfortable anywhere. On-road or off;<sup>10</sup> the optional Airmatic Semi-Active Suspension (the ML 63 AMG has Airmatic Sport Suspension standard) optimizes ride and handling, letting you select your damping preference as well as raising the ground clearance by up to 11.4 inches.





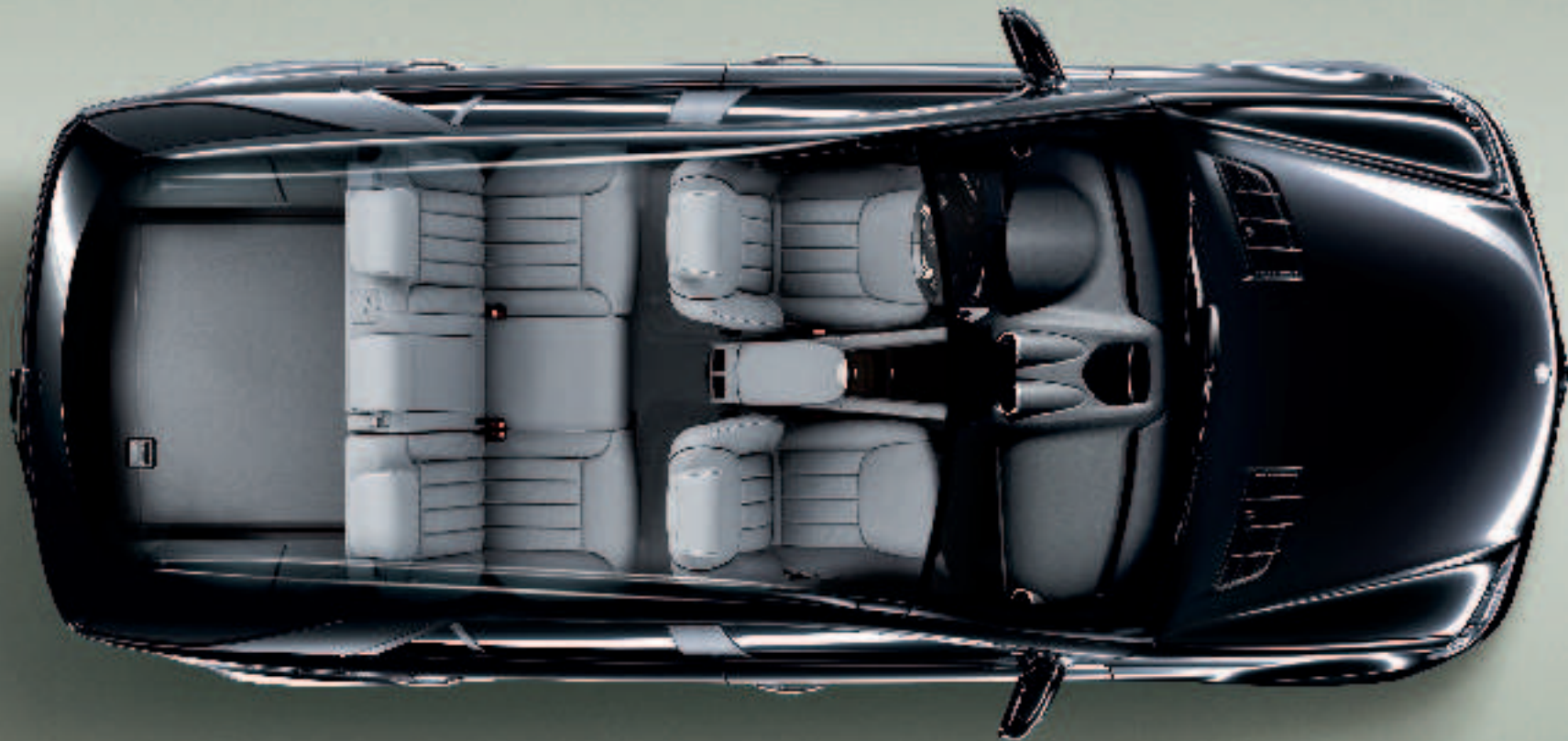
# M-CLASS

## Dynamic luxury.

One of the greatest luxuries a sport-utility vehicle can offer is comfort. Especially Mercedes-Benz comfort. The M-Class delivers full-sized headroom and legroom in both rows of seats. Its front seats are power-adjustable eight ways, while dual-zone climate control lets front-seat occupants set their individual temperature preferences. Hand-polished wood accents and a leather-trimmed steering wheel provide classic elegance, as do premium features and technology that includes a multifunction steering wheel and a SmartKey remote, as well as the convenience and peace of mind of standard Tele Aid.

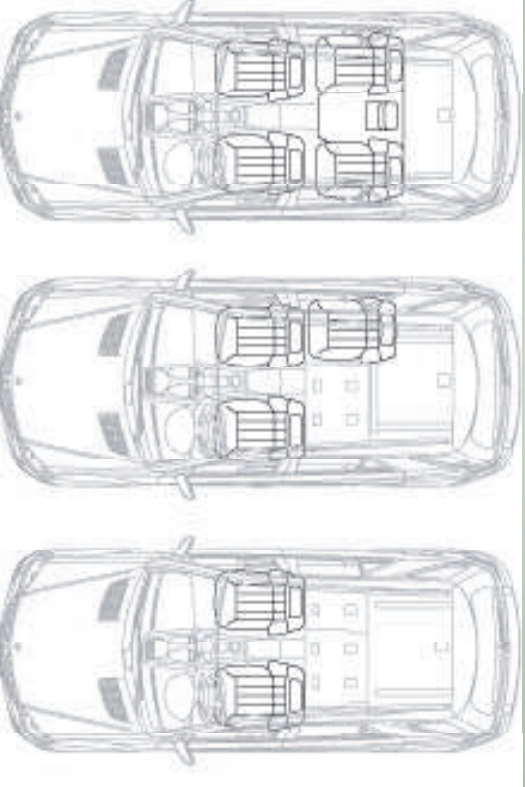


# M-CLASS



## Dynamic versatility.

If versatility is a virtue, then the M-Class is a noble SUV indeed. That virtue begins with the choice of four engines, a 7,200-lb towing capacity<sup>4</sup> and a driving personality that's as winning on-road as off.<sup>10</sup> Inside, the M-Class offers two roomy rows of seating for five adults that can be configured in any number of combinations of friends and freight. And to ease backing into and out of tight spaces, an optional Rear View Camera is available, adding even more flexibility to your driving.







ML 63 AMG shown in Iridium Silver metallic paint.  
Please see page 77 for Endnotes.



Vast power.  
From our hands to yours:  
the ML 63 AMG.

Bolstered by a new 503-horsepower, 6.3-liter engine hand-built by an AMG master technician, the ML 63 AMG rockets from 0 to 60 mph in just 4.8 seconds.<sup>§</sup> As much as 60% of the torque can be routed to the rear axle, making for lightning-quick reflexes and marking a new milestone for the M-Class. The AMG-calibrated Airmatic Sport Suspension and spring-struts with our specially tuned Adaptive Damping System sharpen handling to a fine point. Flared wheel arches frame the 20" high-performance tires<sup>7</sup> and large AMG brake calipers. A fearsome air dam accents the vehicle's wide stance. Surely, the ML 63 looks the part: an SUV ready to tackle any road.



# ML 63 AMG

Drivetrain	Engine	AMG-built DOHC 32-valve V-8
	Horsepower	503 hp @ 6,800 rpm
	Torque	465 lb-ft @ 5,200 rpm
	Displacement	6,208-cc
	Compression	11.3:1
	Transmission	7-speed automatic with AMG SPEEDSHIFT. <sup>™</sup>
	Drive system	4MATIC <sup>™</sup> 4-wheel drive with 40/60 front/rear torque split.
Chassis	Acceleration	0-60 mph in 4.8 seconds. <sup>§</sup>
	Suspension	AMG-calibrated Airmatic Sport Suspension with Adaptive Damping System.
	Wheels	20" AMG 5-spoke, 10.0x20 <sup>7</sup>
	Tires	295/40 ZR20, high-performance. <sup>7</sup>
	Brakes	AMG-enhanced dual-circuit power-assist 4-wheel disc. Front: 15.4" compound perforated and ventilated discs. Rear: 14.4" compound perforated and ventilated discs.





# GL-CLASS

Engine GL 320 CDI GL 450 GL 550	3.0-liter turbocharged V-6 4.6-liter V-8 5.5-liter V-8
Power GL 320 CDI GL 450 GL 550	215 hp @ 4,000 rpm 335 hp @ 6,000 rpm 382 hp @ 6,000 rpm
Torque GL 320 CDI GL 450 GL 550	398 lb-ft @ 1,600-2,400 rpm 339 lb-ft @ 2,700-5,000 rpm 391 lb-ft @ 2,800-4,800 rpm
Drive configuration	Standard 4-wheel drive.
Towing capacity <sup>4</sup>	7,500 lbs (Class IV)
Passenger seating	7 adults.
Cargo capacity <sup>5</sup> (2nd/3rd rows folded flat)	83.3 cu ft

The only full-sized SUV that’s also a Mercedes-Benz.



Where do you go after you’ve already been named Sport/Utility of the Year™? In the GL-Class, everywhere. With its light-yet-strong uni-body construction – a first for full-sized SUVs – road-mastering 4MATIC™ 4-wheel drive and fully independent multilink suspension, the GL has exceptional on-road poise and off-road authority. For 2008, the new GL 550, with a 382-horsepower V-8, puts even more muscle behind the GL-Class. And essentials like three rows of adult-sized seating for seven, three rows of unmatched safety features and three rows of comfort and convenience make the full-sized GL a full-blooded Mercedes-Benz.

GL 550 shown in optional Iridium Silver metallic paint.  
Please see page 77 for Endnotes.



# GL-CLASS

## Boundless performance.

Whether the job is towing, hauling, passing or adventuring, the GL-Class gets it done.

The GL 320 CDI's 3.0-liter V-6, with 398 lb-ft of torque, pulls like a big V-8 – with equally impressive fuel economy. This remarkable diesel is also quiet and clean. The GL 450's 335-horsepower V-8 delivers plenty of power along with superb fuel economy. New to the GL-Class this year, the GL 550 is equipped with a 382-horsepower V-8. Unprecedented in full-sized SUVs, the 7-speed automatic transmission shifts effortlessly and is geared to help the GL-Class make on-ramps shorter and climb mountains more quickly.

The GL-Class is the only full-sized SUV with uni-body construction, meaning it rides smoother, handles better and weighs less than a comparable truck-based SUV. The GL's Mercedes-Benz feel is enhanced by its 4-wheel independent multilink suspension and load-compensating air suspension. Standard 4MATIC™ 4-wheel drive with our 4-wheel Electronic Traction System brings precision to every road, paved or not. More off-road support comes from driver-activated Downhill Speed Regulation (DSR). And for the enthusiast, the optional Off-Road Package in the GL 450 allows your GL to venture even deeper into the wilds!!



# GL-CLASS

## Boundless luxury.

Full-sized luxury finds a full-sized home in the GL-Class. Heated 8-way power-adjustable seats make comfort a priority for the driver and front passenger. Hand-fitted Birdseye Maple or Burl Walnut wood trim and a leather-wrapped or wood/leather multifunction steering wheel add rich accents to the cabin. In addition to a standard 3rd row, the interior provides generous headroom and legroom throughout. And all three rows of seating benefit from an 8-speaker audio system with MP3 player capability and a 6-disc CD changer. Available GL-Class luxury options include a 14-speaker harman/kardon® LOGIC7® digital surround-sound system, 3-zone climate control and a Rear View Camera. And the ultimate luxury in any Mercedes-Benz is peace of mind, which is why every GL is a safety leader, delivering the 12-way protection of eight air bags and seat-belt pretensioners for the outboard passengers in all three rows.

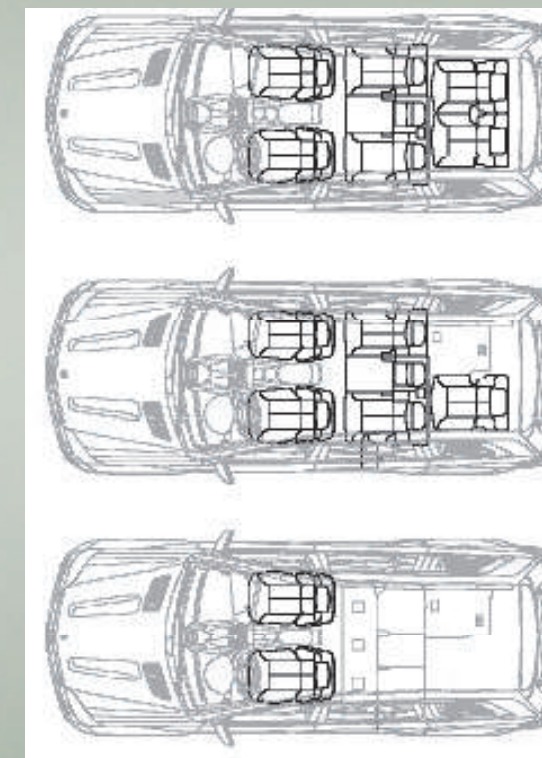


# GL-CLASS



## Boundless versatility.

The GL-Class embraces change. Its 7,500-lb towing capacity,<sup>4</sup> ride-balancing air suspension and optional Off-Road Package keep the best of both worlds — on-road and off-road — open to you. When you need to carry people, the GL offers three rows of adult-sized seating for seven. When cargo takes priority, the liftgate opens wide for easy loading and the 2nd- and 3rd-row seats fold flat to give you more than 83 cu ft of packing space.<sup>5</sup> And 3rd-row one-touch power-folding seatbacks allow you to easily change configurations to accommodate both people and cargo. It's no surprise that the more the GL-Class changes, the more your admiration for it grows.







# R-CLASS

Engine R 320 CDI R 350 2WD R 350	3.0-liter turbocharged V-6 3.5-liter V-6 3.5-liter V-6
Power R 320 CDI R 350 2WD R 350	215 hp @ 4,000 rpm 268 hp @ 6,000 rpm 268 hp @ 6,000 rpm
Torque R 320 CDI R 350 2WD R 350	398 lb-ft @ 1,600–2,400 rpm 258 lb-ft @ 2,400–5,000 rpm 258 lb-ft @ 2,400–5,000 rpm
Drive configuration	2-wheel drive and available 4-wheel drive.
Passenger seating	6 adults (seating for 7 available).
Cargo capacity <sup>5</sup> (2nd/3rd rows folded flat)	85 cu ft

Room for seven adults.<sup>12</sup>  
And their impossibly high standards.

R 320 CDI<sup>6</sup> R 350 2WD R 350

The strong lines of the R-Class entice from the outset. Aggressive AMG bodystyling with chrome front foglamps and a more inclined stance embolden the look even further. Inside, you're invited to luxury accommodations: six full-sized seats or optional seating for seven, both of which can be configured in a variety of ways. Safety designs integrate features like an air-bag system that includes Window Curtain Air Bags in all three rows, available 4MATIC™ 4-wheel drive on two R-Class models and High-Strength/Low-Alloy steel construction on all three. Such thoughtful engineering extends to performance that promotes ride comfort and remarkable agility with equal verve. And every R-Class – the R 320 CDI, with groundbreaking CDI diesel technology, the R 350 2WD and the R 350 – maintains Mercedes-Benz standards of luxury and leading-edge technology.

The R-Class. A class of vehicles that are in a class by themselves.

R 350 shown in optional Barolo Red metallic paint with optional Lighting Package.  
Please see page 77 for Endnotes.



# R-CLASS

## Uncommon performance.

The R-Class's many luxuries are matched by its impressive performance. A 268-horsepower V-6 engine endows the R 350 with confident acceleration. In addition to earning remarkably high fuel economy, the breakthrough diesel powerplant in the R 320 CDI uses a Common-rail Direct Injection system to create an astounding 398 lb-ft of torque. Both engines are attached to a 7-speed automatic transmission that exerts this force smoothly, smartly. Assured handling follows the enormous power at every turn. Along with Mercedes-Benz advances like our Electronic Stability Program, a rigid uni-body construction helps maintain safety and ride comfort. You'll enjoy a high-quality-of-driving life, whether you're easing around a bend or passing on a highway. The R 350 and R 320 CDI come standard with 4MATIC™ 4-wheel drive with our 4-wheel Electronic Traction System to keep you moving on slippery surfaces — even if only one wheel has traction.



R 350 2WD shown above left in optional Iridium Silver metallic paint. R 350 shown at right in optional Alpine Rain metallic paint.  
Please see page 77 for Endnotes.



# R-CLASS

## Uncommon luxury.

Standard dual-zone climate control equips the cabin with 11 vents for comfort tailored to your passengers, while optional heated front seats keep you toasty on chilly days. Details like a leather-wrapped multifunction steering wheel, Birdseye Maple wood trim and an optional Panorama Roof add to the elegant surroundings. Second-row passengers, meanwhile, can enjoy the available Rear-Seat Entertainment System, DVDs, games and CDs. Your wealth of entertainment options also includes a harman/kardon® LOGIC7® digital surround-sound system and SIRIUS Satellite Radio, with nearly 200 channels including almost 100 commercial-free music stations.<sup>13</sup> The COMAND system puts most of these features, plus an available DVD-based Navigation System, at your fingertips. In short, the interior of the R-Class is a blend of comfort, convenience and luxury that is nothing less than artful. Nothing less than a Mercedes-Benz.

R 350 shown with Ash MB-Tex interior, accessory wood/leather steering wheel and optional Premium 2 Package.  
Please see page 77 for Endnotes.



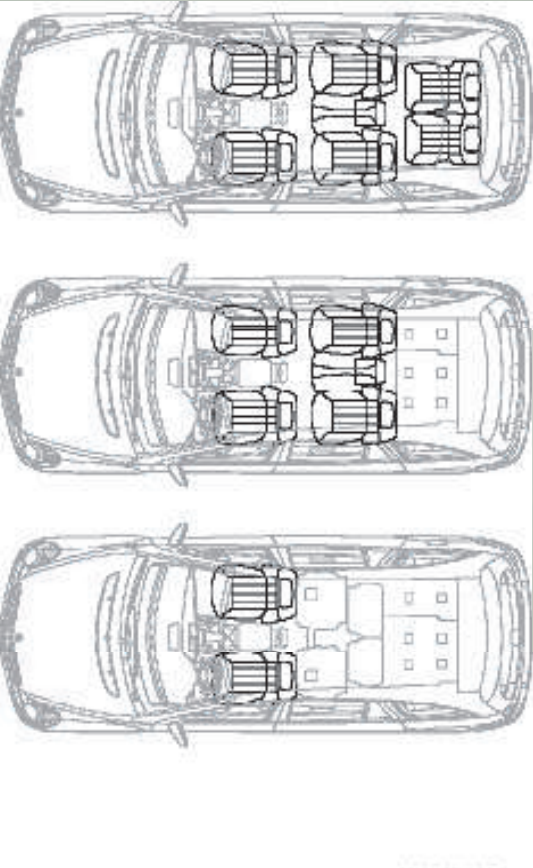


# R-CLASS



## Uncommon versatility.

Individual seating for up to seven adults<sup>12</sup> is only part of this amazingly resourceful vehicle. Every R-Class comes standard with armrests and an adjustable head restraint, as well as lumbar and thigh supports. Lean back. Nearly 40" of legroom stretches between the front and 2nd rows, with more than 35" between the 2nd and 3rd rows. And an optional 7-seat configuration creates even more passenger room. Trips to the store or the shore benefit from the numerous cargo and seating combinations. Individually or collectively, the seats throughout fold flat. And with the 2nd- and 3rd-row seats down, the R-Class boasts an 8-foot-long loading floor area and up to 85 cu ft of cargo space.<sup>5</sup> The optional power liftgate? That invites you to tap all these resources.







# G-CLASS

Engine G 500 G 55 AMG	5.0-liter V-8 AMG-built 5.5-liter supercharged V-8
Power G 500 G 55 AMG	292 hp @ 5,500 rpm 493 hp @ 6,100 rpm
Torque G 500 G 55 AMG	336 lb-ft @ 2,800–4,000 rpm 516 lb-ft @ 2,800–4,500 rpm
Drive configuration G 500  G 55 AMG	Standard 4-wheel drive with 3 independent locking differentials. Standard 4-wheel drive with 3 independent locking differentials.
Passenger seating	5 adults.
Cargo capacity <sup>5</sup> (2nd/3rd rows folded flat)	79.5 cu ft

## The one that started it all.

G 500    G 55 AMG

The G-Class. Assembled by hand in small numbers, this rugged 4-wheel-drive vehicle is an icon. The G 500 makes bold use of a 7-speed automatic transmission hitched to a stalwart V-8 engine and equips the vehicle with three independent locking differentials for off-road handling that's as fun as it is commanding. A redesigned instrument panel and heated wood/leather steering wheel, SIRIUS Satellite Radio and a Rear View Camera are among its new appointments. Heated front and rear seats made from Premium Leather immerse you in luxury. For drivers who insist upon legendary, the G-Class is the very real answer.

G 500 shown in Iridium Silver metallic paint.  
Please see page 77 for Endnotes.



# G-CLASS

## Legendary performance.

The G 500 performs as impressively as it looks. A robust 5.0-liter V-8 produces 292 horsepower and 336 lb-ft of torque. A 7-speed automatic transmission adjusts shift points to reflect your driving style, adding Touch Shift for manual-style shifting. The advanced powertrain delivers the maximum available power during sporty maneuvers. If you feel like cruising, it shifts for better fuel economy.

Around curves, the Electronic Stability Program counteracts understeer (plowing) and oversteer (fishtailing). The Antilock Braking System with Brake Assist hones the vehicle's agility further by providing assured, precise stops!<sup>14</sup> Full-time 4-wheel drive with our 4-wheel Electronic Traction System helps ensure a balanced distribution of torque to keep you moving, even on slick surfaces.<sup>2</sup> Go off-road over unforgiving terrain armed with gas-pressurized shock absorbers, 8.3" of ground clearance and a two-speed transfer case that grants you more power using fewer rpm!<sup>11</sup> Like so many of its drivers, this tough-guy vehicle knows no limits.





# G-CLASS

## Legendary luxury.

Sophistication, from the outside in. In addition to nearly 80 cu ft of cargo space,<sup>5</sup> the interior features amenities like leather seating and Burl Walnut wood trim. The multicontour driver's seat holds you in body-hugging comfort, and all the seats are heated as well. Intuitive controls—on the dashboard or even the heated wood/leather steering wheel—allow you to scan through your music files, master the 9-speaker sound system or select your preferred conditions via the dual-zone climate control system. The COMAND system with DVD-based navigation unifies most of these features, bringing up trip routes on a crisp color-LCD screen. The G-Class also comes standard with Tele Aid to put an array of services at your fingertips, from roadside assistance to emergency response. Of course, you're welcome to bring along luxuries of your own, from sailboats to snowmobiles: the G 500 offers a towing capacity of up to 7,000 lbs.<sup>4</sup>





Please see page 77 for Endnotes.



# G 55 AMG



The G 55 AMG. So this is what they mean by monster truck.

Brawn redefined. And refined. A 5.5-liter, supercharged V-8 develops 493 horsepower and 516 lb-ft of torque to surge from 0 to 60 mph in a surprising 5.4 seconds.<sup>8</sup> Superior abilities are the benefits of the G 55 AMG's powerful engine. An AMG sport suspension makes everyday driving from point A to point B a pleasure. Make more adventurous drives from point A to points unknown part of the fun with three independent locking differentials, standard 4-wheel drive and a driver-adaptive 5-speed automatic transmission. And the look and rumbling sound of dual chrome AMG twin sidepipes? They just plain make a statement.

Drivetrain	Engine	AMG-built supercharged SOHC 24-valve V-8
	Horsepower	493 hp @ 6,100 rpm
	Torque	516 lb-ft @ 2,800–4,500 rpm
	Displacement	5,439-cc
	Compression	9.0:1
	Transmission	5-speed automatic.
	Drive system	4-wheel drive with 50/50 front/rear torque split. 3 independent locking differentials.
	Acceleration	0–60 mph in 5.4 seconds. <sup>8</sup>

Chassis	Suspension	Front and rear rigid axles with longitudinal and transverse links, coil springs and gas-pressurized shock absorbers. Front stabilizer bar. Wheel travel: 8.0"
	Wheels	18" AMG 5-spoke, 9.5x18 <sup>7</sup>
	Tires	285/55 R18, high-performance. <sup>7</sup>
	Brakes	AMG-enhanced dual-circuit power-assist 4-wheel disc. Front: 13.8" slotted and ventilated discs. Rear: 13.0" slotted and ventilated discs.



**4.6-liter V-8 engine   GL 450**

The GL 450's 335-horsepower, 4.6-liter V-8 engine is equal parts engineering marvel and mean machine. Its 339 lb-ft of torque is available at low engine speeds for ample muscle when hauling a heavy load or accelerating flat out on a straightaway. For all its size and power, the GL 450 engine is remarkably quiet and efficient. That is thanks to an overall engine design concept that stresses lightweight components such as pistons and connecting rods, as well as free-breathing induction featuring four valves per cylinder and continuous camshaft adjustment for both intake and exhaust valve timing. The result is an engine that is equally at home cruising on the interstate as it is heading off-road.<sup>11</sup>



**5.0-liter V-8 engine   G 500**

Motivation rises to a new level of intensity with the 5.0-liter single overhead cam (SOHC) V-8 in the G 500. This impressive powerplant develops an exhilarating 292 horsepower and a staggering 336 lb-ft of peak torque at 2,800–4,000 rpm. Striking a brilliant balance between strength and sophistication, this virtuoso V-8 matches its high performance with low emissions.

**5.5-liter V-8 engine   ML 550/GL 550**

One of our most advanced engines generates 382 horsepower and 391 lb-ft of torque, with an amazing 75% of peak torque available at just 1,000 rpm. To help reduce engine weight and increase durability, the engine block is made of cast aluminum with a solid bedplate, an ideal construction for performance and durability.

**3.5-liter V-6 engine   ML 350/R 350**

A dazzling all-around performer in the ML 350 and R 350, the 3.5-liter dual overhead cam (DOHC) V-6 will thrill you with its energizing 268 horsepower and 258 lb-ft of torque. Continually variable timing on both the intake and exhaust valves ensures that peak torque is on tap at 2,400–5,000 rpm, for immediate response at virtually any driving speed.

**320 CDI turbo diesel V-6 engine   ML 320 CDI/GL 320 CDI/R 320 CDI**

Seventy years ago, we sold the first diesel passenger vehicle. We've reinvented it many times since, but our ML 320 CDI,<sup>5</sup> GL 320 CDI<sup>6</sup> and R 320 CDI<sup>6</sup> share an advance as revolutionary as the vehicles themselves. Press the accelerator and experience 215 horsepower and an astounding 398 lb-ft of peak torque that starts at just 1,600 rpm. Remarkably quiet and silky-smooth, this 3.0-liter DOHC 24-valve V-6 delivers exceptional response whether you're in town or out on the highway. Our ultra-clean CDI technology reduces exhaust particulates, hydrocarbons and carbon monoxide levels further than ever before. And its inherently efficient operation yields up to 30% better fuel economy than comparable gasoline engines, while producing notably fewer greenhouse gas emissions.<sup>16</sup>



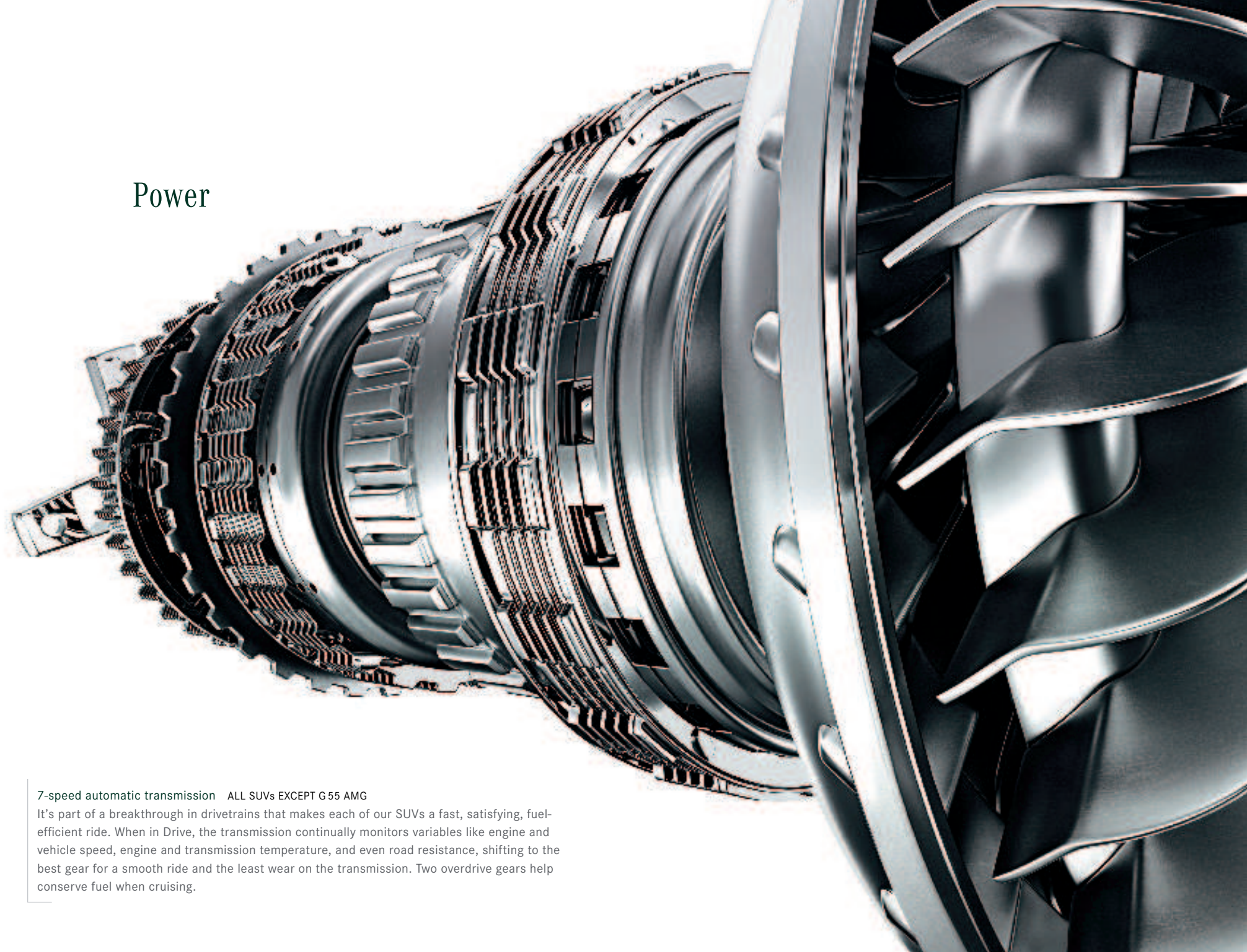
**AMG 5.5-liter V-8 engine   G 55 AMG**

The powerful core of the G 55 AMG is a supercharged, handcrafted 5,439-cc V-8 producing a muscular 493 horsepower, with 516 lb-ft of torque flooding in at 2,800 rpm. Geared up with a 5-speed automatic transmission, the G 55 gets from 0 to 60 mph in a sports-car-quick 5.4 seconds.<sup>9</sup>

**AMG 6.3-liter V-8 engine   ML 63 AMG**

The most powerful naturally aspirated V-8 in our lineup has been mated to a 7-speed automatic transmission with AMG SPEEDSHIFT™ for ready access to that enormous strength. Feel a rush of euphoria as the engine develops a massive 503 horsepower and 465 lb-ft of torque to propel the ML 63 AMG from 0 to 60 in only 4.8 seconds.<sup>8</sup> And like all AMG engines, each is hand-built and signed by a single master technician.

## Power



**7-speed automatic transmission   ALL SUVs EXCEPT G 55 AMG**

It's part of a breakthrough in drivetrains that makes each of our SUVs a fast, satisfying, fuel-efficient ride. When in Drive, the transmission continually monitors variables like engine and vehicle speed, engine and transmission temperature, and even road resistance, shifting to the best gear for a smooth ride and the least wear on the transmission. Two overdrive gears help conserve fuel when cruising.



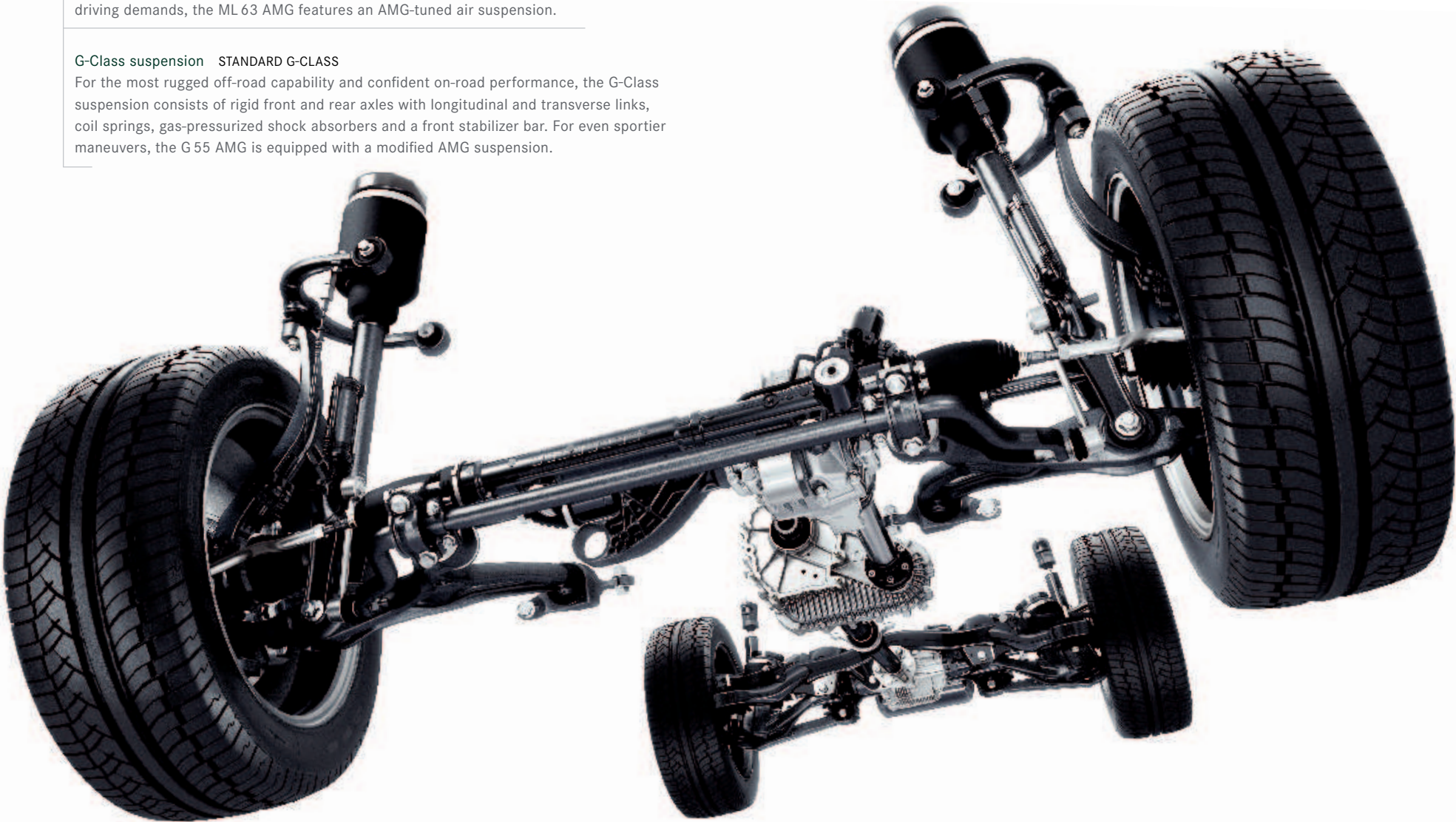
## Agility

### M/GL/R suspension   STANDARD M/GL/R

For exceptional poise and control, the M, GL and R-Class use an independent double wishbone front suspension. In the rear, an independent 4-arm multilink design controls rear-wheel movement with outstanding precision. For a more balanced, comfortable ride, an available air suspension (standard on the ML 63 AMG and all GL-Class models) features air bellows at all four wheels that automatically adjust to changing driving conditions and level the vehicle to help manage additional cargo and passenger weight. For the scalpel-sharp handling performance driving demands, the ML 63 AMG features an AMG-tuned air suspension.

### G-Class suspension   STANDARD G-CLASS

For the most rugged off-road capability and confident on-road performance, the G-Class suspension consists of rigid front and rear axles with longitudinal and transverse links, coil springs, gas-pressurized shock absorbers and a front stabilizer bar. For even sportier maneuvers, the G 55 AMG is equipped with a modified AMG suspension.



Please see page 77 for Endnotes.



### 4MATIC™ 4-wheel drive with 4-wheel Electronic Traction System (4-ETS)   AVAILABLE ALL SUVs

For optimum traction, even in slippery conditions, this full-time 4-wheel-drive system incorporates our advanced 4-wheel Electronic Traction System. 4-ETS can get you going even when only one wheel has grip. Sensors at each wheel monitor traction. If one or more wheels start to slip, 4-ETS brakes those wheels individually and shifts power to the wheel or wheels with traction, keeping you cruising along.<sup>2</sup>

### Uni-body construction   STANDARD M/GL/R

Building the body as a single structure reduces weight while retaining exceptional strength and rigidity for better all-around performance. The uni-body also resists twisting and flexing for more precise handling and a smoother, quieter, more solid ride, on-road or off.<sup>10</sup> In the case of the GL-Class, it's the only full-sized European luxury SUV in its class to feature uni-body construction.



### 4-wheel antilock disc brakes   STANDARD ALL SUVs

The 4-channel Antilock Braking System (ABS) in our SUVs is a combination of interconnected sensors, technologies and mechanics that creates braking performance that's as intelligent as it is effective. ABS also works with Brake Assist to help ensure stability in emergency braking situations. The system also plays a key part in our Electronic Stability Program, allowing selective brake application at each wheel as necessary and helping to preserve directional control.

Please see page 77 for Endnotes.

### Hill-Start Assist   STANDARD M/GL/R

To help prevent unwanted vehicle rollback when taking off from a stop on an incline, Hill-Start Assist automatically maintains brake pressure for approximately one second after the driver releases the brake pedal. The system is automatically deactivated when the vehicle is level, the gear selector is in Park or Neutral, or the parking brake is set.

### Trailer Stability Assist   STANDARD M/GL

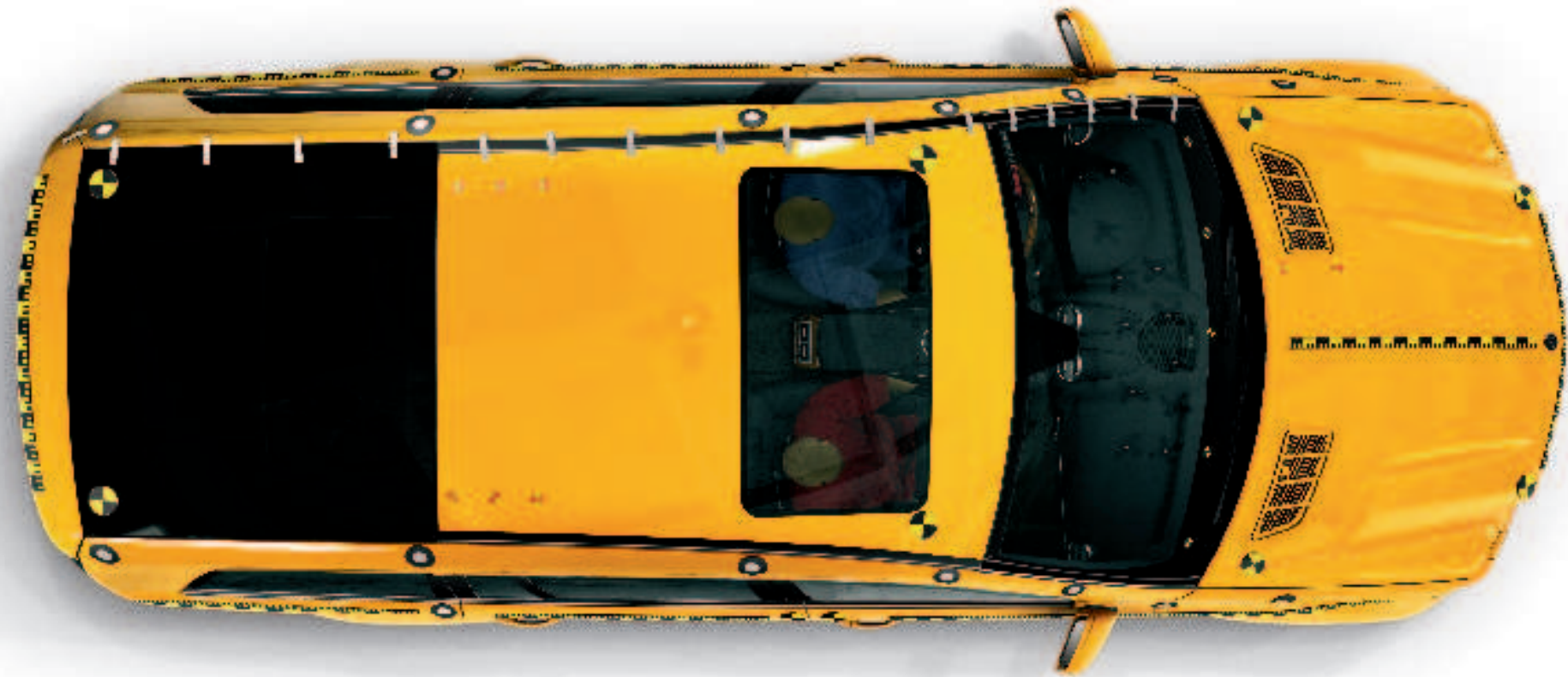
A trailer in tow can adversely affect the driving dynamics of a vehicle. That's why the M and GL-Class are equipped with Trailer Stability Assist. Electronic Stability Program (ESP®) sensors monitor for oscillations caused by the trailer's movement. The system then intervenes by using the brakes to help stabilize the vehicle. Once ESP is satisfied that the vehicle and trailer are under control, braking intervention is ceased.



### Locking differentials   AVAILABLE GL/G

When driving on uneven off-road terrain on which one or more wheels may lose their grip, the driver can keep torque going to the wheels with traction by using the differential locks. When equipped with this system, the GL features two optional locking differentials: one for the center and one for the rear wheels. A thumbwheel on the center console offers three settings: automatic (engages the axle lock only when necessary), manual inter-axle lock and manual engagement of both differential locks. The G-Class offers three independent locking differentials—Front, Center and Rear—specifically for the extremes of off-road terrain.<sup>10</sup>





# Protection

**Mercedes-Benz safety philosophy**  
At Mercedes-Benz, safety goes well beyond engineering vehicles that help protect you in an accident. Our safety philosophy takes a proactive approach to many aspects of driving safety: active safety and driver-assistance systems, such as the Electronic Stability Program and Brake Assist, help you avoid a potentially dangerous situation; passive safety features include air bags and seat-belt tensioners; and post-collision features like automatic engine cutoff are designed to reduce the risk to occupants in the immediate aftermath of certain crashes, help prevent worsening of the situation and help facilitate rapid assistance by rescue workers. No other automaker has a more complete view of safety than the one that spearheaded the use of crumple zones, antilock brakes and other safety advances.

**Electronic Stability Program (ESP®)**  
**STANDARD ALL SUVs**  
This advance continually monitors your vehicle’s motion to help keep you going in your intended direction. If it detects wheelspin, severe understeer (plowing) or oversteer (fishtailing), ESP can brake individual wheels and reduce engine power to correct those problems and help bring the vehicle under control.<sup>2</sup> Mercedes-Benz pioneered this safety landmark in 1995 and has continued to refine its exacting performance ever since.

**Advanced air-bag protection**    **STANDARD ALL SUVs**  
All of our SUVs feature truly state-of-the-art air-bag systems. Each offers Window Curtain Air Bags that span every row of the vehicle. These air bags deploy along the front and rear side-door windows on the affected side. When combined with properly worn seat belts, they help protect outboard occupants from head injury and broken glass in certain side impacts or rollovers that exceed the deployment threshold. By model, the M-Class delivers the 10-way protection of an 8-air bag system and the G-Class has the 6-way protection of a 4-air bag system, while the R and GL-Class both have the 12-way protection of an 8-air bag system. The M, R and GL-Class provide front- and 2nd-row side-impact air bags.<sup>17</sup>

**Brake Assist**    **STANDARD ALL SUVs**  
Research shows that drivers seldom apply the brakes hard enough, soon enough in emergency situations. Based on brake pedal application speed, our Brake Assist advance can sense emergency braking and provide maximum brake boost.<sup>14</sup>



**Active Front Head Restraints**    **STANDARD M/GL/R**  
In the case of a rear impact exceeding a preset threshold, the Active Front Head Restraints move forward and slightly upward, reducing the distance between the head restraint and the front-seat occupants’ heads. This action helps limit the rearward travel of their heads, thus reducing the possibility or severity of whiplash-type neck injuries.

**Innovative seat-belt technology**  
**STANDARD ALL SUVs**  
Equipped with Emergency Tensioning Devices (ETDs) and belt force limiters,<sup>8</sup> seat belts are arguably our most important passive safety feature. If a collision exceeds a preset threshold, the ETDs instantly remove slack from the seat belts. Belt force limiters allow a slight amount of give in the seat belts and reduce the peak seat-belt forces on the occupant.



**Tire Pressure Monitoring System**    **STANDARD ALL SUVs**  
The Tire Pressure Monitoring System can automatically detect a substantial loss of tire pressure in any wheel and alert the driver via a warning message on the multifunction display. The system does not display which wheel is affected. The Advanced Tire Pressure Monitoring System comes standard on the G-Class and displays the numeric tire pressure for each wheel.<sup>19</sup>

**Advanced body structure**    **STANDARD M/GL/R**  
The uni-body construction of our M, GL and R-Class SUVs uses advanced technology and robust materials to create a virtual fortress for the vehicles’ passengers. High-Strength/Low-Alloy steel is used in important areas of the vehicle; in the R-Class, for example, this steel accounts for more than 60% of the body structure. Roof pillars employ three layers of steel, and doors feature steel crossbeams. Full-width front and rear crossmembers, along with a reinforced floorpan and door sills, combine to provide protection in a variety of impacts. Advanced front and rear crumple zones progressively deform to help absorb the energy of an impact, while underhood components are staggered to help prevent them from stacking up in a frontal impact, thereby reducing the likelihood of intrusion into the cabin. An ellipsoidal front bulkhead helps channel some of the forces of a frontal impact under, over and around the passenger cabin.

Please see page 77 for Endnotes.





# Amenities

**Distronic Adaptive Cruise Control** AVAILABLE ALL SUVs EXCEPT GL 550 AND G-CLASS

This radar-based advance monitors the vehicle ahead and adjusts your speed to help maintain your chosen following distance.<sup>20</sup> If the vehicle ahead suddenly slows or abruptly stops and calculated closing speed indicates that you haven't taken appropriate braking action, the Distronic Proximity Warning System illuminates a red light in the instrument cluster and sounds an alarm signal.<sup>21</sup> Ideal for long journeys, as there is less need to adjust the cruise control setting.

**Power liftgate** AVAILABLE M/GL/R

This convenient feature lets you fully open the liftgate at the touch of a button on the driver's door, SmartKey or liftgate. Press another button and it power-closes automatically.

**Parktronic system** AVAILABLE ALL SUVs<sup>22</sup>

When parking, ultrasonic sensors in the bumpers detect nearby objects within the system's field of view. Audible signals and illuminated displays help you maneuver with confidence. This system helps you avoid obstacles that might be outside your field of vision when parking in tight spaces.

**Keyless Go** AVAILABLE M/GL/R

A leap in ease and efficiency, this option lets you open or lock any door or the trunk while leaving your vehicle's SmartKey in your pocket. To start the vehicle, simply step on the brake pedal and push the Start button, located on the vehicle's ignition. You can also start the vehicle by removing the Start/Stop button and inserting the SmartKey in the ignition.



Please see page 77 for Endnotes.

**Bi-Xenon headlamps with Active Curve Illumination and corner-illuminating foglamps**  
AVAILABLE ALL SUVs

To help you see better when driving around curves at night, these headlamps turn along with your steering wheel (except on the G-Class, which comes standard with corner-illuminating front foglamps). As a result, you get a better view into corners by increasing illumination by up to 90% over conventional fixed headlamps. Bi-Xenon headlamps deliver superior visibility over halogen headlamps because their brighter, whiter light is much closer to natural sunlight. They also incorporate dynamic level control and high-pressure heated headlamp washers. When making tight turns at low speeds, the corner-illuminating front foglamps illuminate the area on the inside of the turn for better visibility.

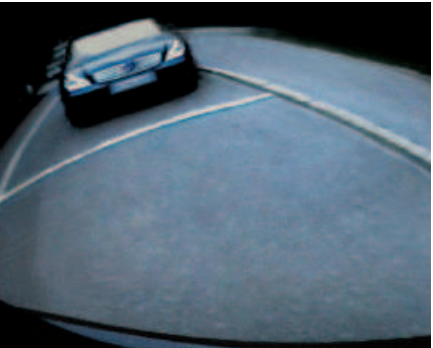


**Trailer hitch** AVAILABLE M/GL/G

Campers, boats, horse trailers—whatever you tow, our M, GL and G-Class SUVs were designed with pulling a trailer in mind. Take full advantage of their 7,200-, 7,500- and 7,000-lb towing capacities with the trailer hitch. This factory-installed option allows the M and G-Class to meet Class III towing requirements and qualifies the GL-Class to meet Class IV towing requirements.<sup>23</sup>

**Rear View Camera** AVAILABLE ALL SUVs

This innovative driver-assistance advancement enables you to see behind your vehicle when reversing. When you shift into Reverse gear, a wide-angle camera mounted in the rear shows you what's behind the vehicle and displays it on the COMAND screen on the dashboard.<sup>24</sup>



Please see page 77 for Endnotes.



**Multicontour front seats**  
**STANDARD GL 550 AND G-CLASS<sup>25</sup>**  
The multicontour front seats deliver an exceptionally comfortable driving experience. Pneumatically adjustable dual lumbar supports, side bolsters and thigh supports allow for a custom-tailored fit.

**3rd-row split-flat-folding power seatbacks**  
**STANDARD GL-CLASS**  
The power 50/50-split theater-style 3rd-row seats in the GL-Class can be individually folded completely flat in less than five seconds. Controls for each seat are located in the cargo area and near the 2nd-row seat on the passenger side.



**Leather seats** AVAILABLE ALL SUVs  
The interior upholstery is available in fine hand-fitted leather on all seats, door-trim inserts and the front center armrest. Complementing the look and feel of the interior is available Burl Walnut wood trim.

Please see page 77 for Endnotes.



**Panorama Roof** AVAILABLE R-CLASS  
The large panoramic dual-panel glass sunroof, optional on the R-Class, provides both front- and rear-seat passengers with a remarkably large view of the sky. The front panel can also tilt open or slide over the rear panel to open completely. And if you feel like limiting the amount of sunlight coming in, independently operated interior power sunshades cover both glass roof panels. For its part, the GL-Class treats 3rd-row passengers to a standard 3rd-row fixed sunroof.



**Wood/leather multifunction steering wheel**  
**AVAILABLE ALL SUVs EXCEPT ML 63 AMG**  
Handcrafted and made to match your vehicle's interior colors, this is a symbol of Mercedes-Benz excellence that you'll experience every time you drive.

**Heated seats** AVAILABLE ALL SUVs  
For added convenience and year-round comfort, enjoy available heated front seats in addition to a 8-way power driver's seat. Three levels of heating can be selected via buttons on the dashboard. In addition, the GL 550, G 500 and G 55 AMG come with standard heated rear seats.

**3-zone climate control** AVAILABLE M/GL/R  
The optional 3-zone climate control system adds 2nd-row controls—as well as 3rd-row vents in the GL and R-Class—to the standard front-seat dual-zone climate control system. This comfort advance also lets the driver, front-seat passenger and 2nd-row occupants all select their own levels of heating or cooling. Individual controls for the driver and front-seat passenger are located on the dashboard, while controls for the optional 3rd zone are on the back of the center console.







**Rear-Seat Entertainment System** AVAILABLE M/GL/R

The Rear-Seat Entertainment System lets 2nd-row passengers enjoy DVDs and CDs. Two 7" flat-panel-LCD screens (one in each front headrest) can be tilted up or down to adjust the viewing angle. In the M and GL-Class, a DVD/CD player and control console are mounted under the 2nd-row seat. An auxiliary input allows you to connect a gaming console, video camera or other peripheral device to the system. The system can be controlled via buttons along the underside of the screens or on the included remote control. Audio is played through the vehicle's audio system or wired headphones plugged into headphone jacks.<sup>26</sup>

Please see page 77 for Endnotes.

**Audio system** STANDARD ALL SUVs

The M, GL and R-Class all come equipped with a standard 8-speaker AM/FM audio system with an in-dash CD player; the G-Class offers 9 speakers. Features include weatherband radio, automatic vehicle-speed-sensitive volume adjustment, a large color-LCD screen with controls and an available 6-disc CD changer capable of playing MP3-encoded CDs. An auxiliary input jack in the glovebox allows you to connect an MP3 player (or similar device) directly into the audio system.<sup>27</sup>

**COMAND system** STANDARD ALL SUVs

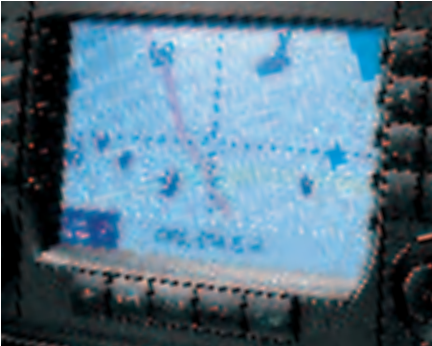
The Cockpit Management and Data (COMAND) system lets you control the audio and optional Navigation and Hands-Free Communication systems via a single in-dash unit with a 6.5" color-LCD screen. Controls on the multifunction steering wheel let you change the radio station, adjust the volume and select a track from the CD that's currently playing. COMAND lets you make and receive phone calls via the Hands-Free Communication System by using the dashboard controls or multifunction steering wheel. The audio system is automatically muted, or the CD paused, when you are on the phone.<sup>28</sup>



**DVD-based Navigation System**

AVAILABLE ALL SUVs

This single-disc system uses GPS satellites to map the route to your location and help find points of interest along the way, including restaurants, hotels, ATMs and Mercedes-Benz dealerships. Maps and other visual aides appear on-screen; voice instructions play through the audio system.<sup>29</sup> Be sure to ask your dealer about our NavUpdate discs to keep your maps and Points Of Interest current.<sup>30</sup>



**harman/kardon® LOGIC7® digital surround-sound system** AVAILABLE ALL SUVs

This digital surround-sound system fills the cabin with beautifully balanced sound. Up to 11 optimally placed speakers deliver an enthralling surround-sound experience from your MP3 players and the available SIRIUS Satellite Radio system and 6-disc CD changer, as well as discs in DVD-Audio and DTS formats.

**Independent audio source control in rear control panel for 2nd row** AVAILABLE M/GL/R

This convenience lets 2nd-row passengers enjoy their own audio entertainment. Headphone jacks and volume control give 2nd-row passengers access to all sources (not including optional iPod® Integration Kit controls, when so equipped) of the main audio system once it has been selected through the main audio controls.

Please see page 77 for Endnotes.

**SIRIUS Satellite Radio** AVAILABLE ALL SUVs

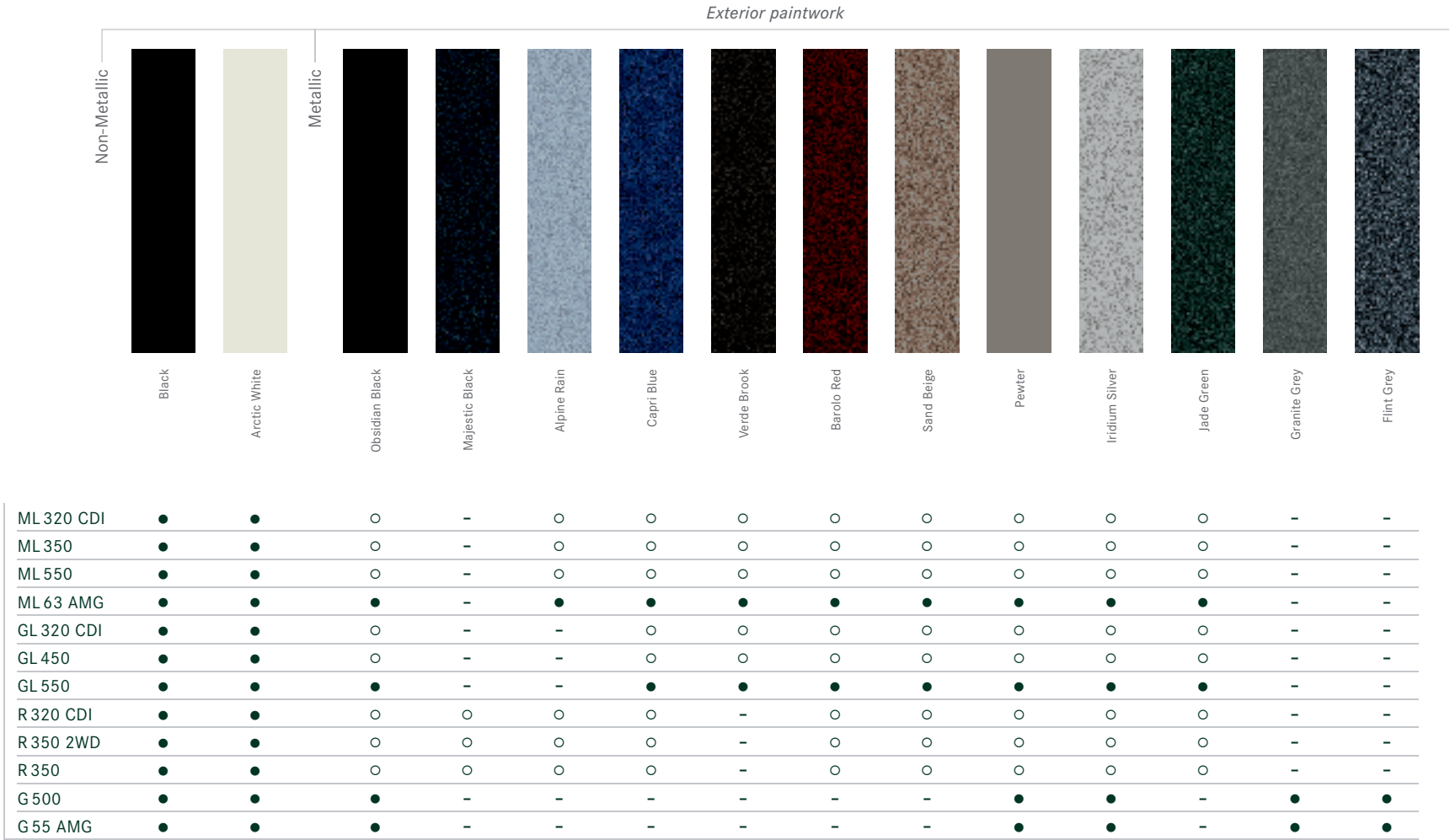
Enjoy your SIRIUS Satellite Radio system with a complimentary 6-month subscription to over 130 channels, including 61 channels of sports, news, talk, entertainment, traffic, weather and data. SIRIUS is also home to 100% commercial-free music channels, featuring 69 music channels nationwide. Live play-by-play broadcasts of the biggest sports—NFL®, NASCAR®, NHL®, NBA® and games from over 150 college sports teams—round out what's sure to be one of your favorite cabin appointments.<sup>31</sup>



**6-disc CD changer** AVAILABLE ALL SUVs

Available with the harman/kardon® LOGIC7® digital surround-sound system, or equipped with the COMAND system, this 6-disc CD changer is a single-feed system.

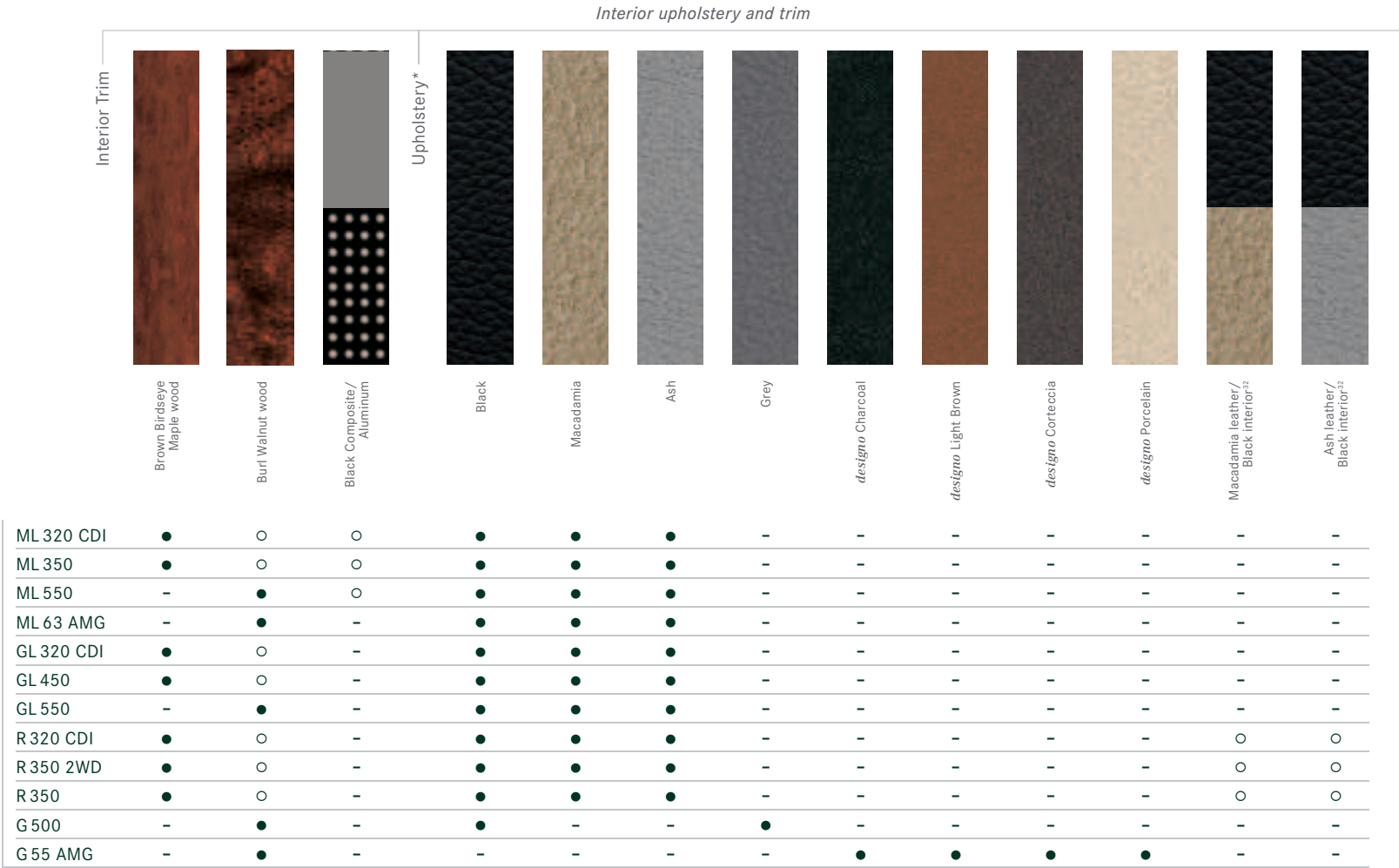




## Color and Trim

### Design an SUV all your own

Choose from a variety of metallic and non-metallic exterior paints. Then add your favorite available upholstery color and material choices. To keep your vehicle’s exterior looking its best for a long time, Mercedes-Benz uses an innovative scratch-resistant clearcoat paint. The resulting finish offers considerably greater and longer-lasting resistance to fine scratches—such as those caused by car washes and environmental factors—than conventional paint finishes, for an enduring deep gloss. With such advanced technology and so many choices, there’s bound to be a design combination for you.



\*Leather upholstery standard ML 63 AMG, GL 550 and G-Class. MB-Tex upholstery standard all other models.

● Standard. ○ Optional. - Not available.  
Please see page 77 for Endnotes.



## Accessories

Our Family of SUVs will always be a luxuriously versatile quartet of vehicles. With genuine Mercedes-Benz accessories, they can also be reflections of your individual style.

### Grille guard

Give your SUV an aggressive look with this rugged, polished steel guard. Factory-designed to be integrated into the front end of any M, GL or G-Class vehicle.<sup>33</sup>



G-Class grille guard not shown.

### Roof rack basic carrier system

Transport a large assortment of items securely while maintaining the elegance of your M, GL or R-Class. This carrier can be enhanced with available components to accommodate bicycles, ski or snowboard racks, and more. Optional cargo containers— aerodynamic and lightweight, yet exceptionally durable— let you add significant storage space for sports equipment and luggage.<sup>5</sup>



### Hitch-mounted bicycle rack

For any M or GL-Class equipped with the optional trailer hitch, this sturdy aluminum hitch-mounted rack securely holds one or two bicycles. Its clever design pivots flat, allowing the tailgate to be opened without removing the bikes. Also available is an extension to expand the capacity to three bicycles.

Please see page 77 for Endnotes.

	Alrai 19"	Rukbat 19"	Furud 20"
M-Class			
	Aldhanab 19"	Tyndaries 20"	
GL-Class			
	Aludra 18"	Situla 19"	Alanz 20"
R-Class			

### Accessory aluminum-alloy wheels

Engineered to the highest standards, each of our accessory wheels puts a unique spin on your SUV with cast-aluminum alloy for improved handling as well as arresting designs.

### Wheel locking bolts

Secure your Mercedes-Benz SUV wheels in style. Available in sets of four for 18" light-alloy wheels and including a coded key, these chrome-plated wheel locks protect your wheels and tires from theft—and look great doing it.

### Side step bars

Use these polished, heavy-duty stainless-steel side step bars to ease entry and exit, or simply to raise the profile of your M or GL-Class. They feature integrated rubber-lined steps and are snugly fitted to the contours of the vehicle. Not available ML 550 and ML 63 AMG.

### Multi-Handset Interface (MHI) cradle and Bluetooth® interface

In conjunction with your SUV's pre-wired Hands-Free Communication System, the MHI cradle helps you enjoy the benefits of hands-free calling while charging your Mercedes-Benz-approved phone.<sup>34</sup> Or consider the Bluetooth interface module, which lets you make and receive calls, and even access select phone books, without taking your phone out of your pocket.<sup>35</sup> Not available G 500 and G 55 AMG.



### Door sill panels

In illuminated and non-illuminated styles, these high-quality front and rear door sill panels are made from brushed stainless steel and feature either luminous blue or chrome-backed "Mercedes-Benz" lettering with inlay. Not available G 55 AMG.



### iPod® Integration Kit

With the seamless integration of your iPod into the audio system of your SUV, the steering wheel enables you to view the track information display and control iPod buttons like Volume, Select and Change Menu. You can even charge your iPod while it's playing.<sup>36</sup> Not available G 500 and G 55 AMG.



### Rear-Seat Entertainment System

A state-of-the-art media player in the M, GL and R-Class that supports DVDs, CDs and MP3s. The 7" color-LCD screen and wireless headsets treat passengers to lots of fun, and drivers to fewer distractions.<sup>26</sup>

Please see page 77 for Endnotes.

### Child safety seats

For infants, toddlers and small children alike, our child safety seats deliver comfort as well as protection. While the BabySafe Plus Infant Child Seat holds children up to 29 pounds, the Duo Plus Toddler Child Safety Seat supports those between 20 and 40 pounds and our KID Booster Child Safety Seat accommodates children between 40 and 79 pounds. All three feature padded support, adjustable designs and a removable fabric cover for washing to ensure a pleasurable drive for every member of the family.



### All-season floor mats

Keep the carpet of your SUV in top shape despite virtually any weather condition. Deep channels in the floor mats trap large amounts of water, mud and melting snow. Easy to clean, they come four mats to a set and are available in Black, Grey or Beige.



### Cargo area tray and cargo box

Protect the cargo area of your Mercedes-Benz SUV with this large, sturdy tray that's also easy to clean. This accessory also comes with two optional cargo boxes for holding tall items like grocery bags.

### Mud flaps

Designed to match the contours of your SUV, these durable black plastic mud flaps help protect your vehicle (and followers) from small rocks, mud and salty road spray.



	ML 320 CDI <sup>6</sup>	ML 350	ML 550	ML 63 AMG
ENGINE				
Engine size and type	2,987-cc turbocharged DOHC 24-valve V-6	3,498-cc DOHC 24-valve V-6	5,461-cc DOHC 24-valve V-8	6,208-cc AMG-built DOHC 32-valve V-8
Construction	Cast-iron cylinder block with aluminum-alloy head.	Aluminum-alloy cylinder block.	Aluminum-alloy cylinder block.	Aluminum-alloy cylinder block.
Net power	215 hp @ 4,000 rpm	268 hp @ 6,000 rpm	382 hp @ 6,000 rpm	503 hp @ 6,800 rpm
Net torque	398 lb-ft @ 1,600–2,400 rpm	258 lb-ft @ 2,400–5,000 rpm	391 lb-ft @ 2,800–4,800 rpm	465 lb-ft @ 5,200 rpm
Compression ratio	16.5:1	10.7:1	10.7:1	11.3:1
Fuel requirement	Ultra-low-sulfur diesel fuel.	Premium unleaded gasoline.	Premium unleaded gasoline.	Premium unleaded gasoline.
Fuel tank (capacity—reserve)	25.1 gal—3.4 gal	25.1 gal—3.4 gal	25.1 gal—3.4 gal	25.1 gal—3.4 gal

DRIVETRAIN

Transmission	7-speed automatic. Electronically controlled driver-adaptive shifting.	7-speed automatic. Electronically controlled driver-adaptive shifting.	7-speed automatic. Electronically controlled driver-adaptive shifting.	7-speed automatic with AMG SPEEDSHIFT.™ Electronically controlled driver-adaptive shifting.
Drive configuration	4MATIC™ 4-wheel drive. 50/50 front/rear torque split.	4MATIC 4-wheel drive. 50/50 front/rear torque split.	4MATIC 4-wheel drive. 50/50 front/rear torque split.	4MATIC 4-wheel drive. 40/60 front/rear torque split.
Axle ratio	3.45:1	Front and rear: 3.90:1	Front and rear: 3.70:1	3.46:1
Off-road driving program	Standard.	Standard.	Standard.	Not available.
Downhill Speed Regulation (DSR)	Standard.	Standard.	Standard.	Standard.
Hill-Start Assist	Standard.	Standard.	Standard.	Standard.

TRACTION/STABILITY

Electronic Stability Program (ESP®)	Standard.	Standard.	Standard.	Standard.
4-wheel Electronic Traction System	Standard.	Standard.	Standard.	Standard.

PERFORMANCE

Acceleration, 0–60 mph <sup>8</sup>	8.0 seconds.	7.9 seconds.	5.6 seconds.	4.8 seconds.
Fuel economy, EPA estimate highway estimate	Information not available at time of printing. See your dealer for details.	Information not available at time of printing. See your dealer for details.	Information not available at time of printing. See your dealer for details.	Information not available at time of printing. See your dealer for details.
Towing capacity <sup>4</sup>	7,200 lbs (Class III)	7,200 lbs (Class III)	7,200 lbs (Class III)	7,200 lbs (Class III)

Please see page 77 for Endnotes.

SPECIFICATIONS AND EQUIPMENT

	ML 320 CDI <sup>6</sup>	ML 350	ML 550	ML 63 AMG	58   59
CHASSIS					
Suspension configuration	Front: Independent double wishbone. Antidive geometry. Stabilizer bar. Rear: Independent 4-arm multilink. Geometry for antisquat and alignment control. Stabilizer bar.				
Airmatic Semi-Active Suspension with Adaptive Damping System (ADS-II)	Optional.	Optional.	Optional.	Airmatic Sport Suspension.	
Steering	Rack-and-pinion steering with constant power assist. Turning circle: 40.7 ft curb-to-curb.	Rack-and-pinion steering with constant power assist. Turning circle: 40.7 ft curb-to-curb.	Rack-and-pinion steering with constant power assist. Turning circle: 40.7 ft curb-to-curb.	Rack-and-pinion steering with constant power assist. Turning circle: 37.9 ft curb-to-curb.	

WHEELS/TIRES

Wheels	19" 5-spoke, 8.0x19 <sup>7</sup>	19" 5-spoke, 8.0x19 <sup>7</sup>	19" AMG 5-spoke, 8.0x19 <sup>7</sup>	20" AMG 5-spoke, 10.0x20 <sup>7</sup>
Tires	255/50 R19, all-season.	255/50 R19, all-season.	255/50 R19, all-season.	295/40 ZR20, high-performance. <sup>7</sup>

BRAKES

Brake system	Dual-circuit power-assist 4-wheel disc.	Dual-circuit power-assist 4-wheel disc.	Dual-circuit power-assist 4-wheel disc.	AMG-enhanced dual-circuit power-assist 4-wheel disc.
Brake discs, front Brake discs, rear	13.0" internally ventilated. 13.0" solid.	13.0" internally ventilated. 13.0" solid.	13.0" internally ventilated. 13.0" solid.	15.4" perforated and internally ventilated. 14.4" perforated and internally ventilated.
Antilock Braking System (ABS) and Brake Assist (BAS)	Standard.	Standard.	Standard.	Standard.

EXTERIOR DIMENSIONS

Wheelbase	114.7 in	114.7 in	114.7 in	114.7 in
Overall length	188.5 in	188.5 in	188.5 in	189.8 in
Overall height	71.5 in	71.5 in	71.5 in	73.3 in
Overall width	75.2 in	75.2 in	75.2 in	76.8 in
Track, front—rear	64.0 in—64.1 in	64.0 in—64.1 in	64.0 in—64.1 in	64.0 in—64.1 in
Curb weight	4,817 lb	4,705 lb	4,795 lb	5,093 lb
Ground clearance with steel-spring suspension with Airmatic suspension	8.3 in 7.1 in lowered. 11.4 in raised.	8.3 in 7.1 in lowered. 11.4 in raised.	8.3 in 7.1 in lowered. 11.4 in raised.	Not available. 6.0 in lowered. Not available.

Please see page 77 for Endnotes.

INTERIOR DIMENSIONS<sup>3,7</sup>

Front headroom	39.9 in	39.9 in	39.9 in	39.9 in
Front legroom	42.2 in	42.2 in	42.2 in	42.2 in
Rear headroom	39.8 in	39.8 in	39.8 in	39.8 in
Rear legroom	40.0 in	40.0 in	40.0 in	40.0 in
Cargo capacity, rear seats folded <sup>5</sup>	72.4 cu ft	72.4 cu ft	72.4 cu ft	72.4 cu ft



	GL 320 CDI <sup>6</sup>	GL 450	GL 550
<b>ENGINE</b>			
Engine size and type	2,987-cc turbocharged DOHC 24-valve V-6	4,663-cc DOHC 32-valve V-8	5,461-cc DOHC 32-valve V-8
Construction	Cast-iron cylinder block with aluminum-alloy head.	Aluminum-alloy cylinder block.	Aluminum-alloy cylinder block.
Net power	215 hp @ 4,000 rpm	335 hp @ 6,000 rpm	382 hp @ 6,000 rpm
Net torque	398 lb-ft @ 1,600–2,400 rpm	339 lb-ft @ 2,700–5,000 rpm	391 lb-ft @ 2,800–4,800 rpm
Compression ratio	17.7:1	10.7:1	10.7:1
Fuel requirement	Ultra-low-sulfur diesel fuel.	Premium unleaded gasoline.	Premium unleaded gasoline.
Fuel tank (capacity—reserve)	26.4 gal—3.4 gal	26.4 gal—3.4 gal	26.4 gal—3.4 gal

DRIVETRAIN

Transmission	7-speed automatic. Electronically controlled driver-adaptive shifting.	7-speed automatic. Electronically controlled driver-adaptive shifting.	7-speed automatic. Electronically controlled driver-adaptive shifting.
Drive configuration	4-wheel drive. 50/50 front/rear torque split.	4-wheel drive. 50/50 front/rear torque split.	4-wheel drive. 50/50 front/rear torque split.
Axle ratio	3.45:1	3.7:1	3.7:1
Off-road driving program	Standard.	Standard.	Standard.
Downhill Speed Regulation (DSR)	Standard.	Standard.	Standard.
Hill-start assist	Standard.	Standard.	Standard.

TRACTION/STABILITY

Electronic Stability Program (ESP®)	Standard.	Standard.	Standard.
4-wheel Electronic Traction System	Standard.	Standard.	Standard.

PERFORMANCE

Acceleration, 0–60 mph <sup>8</sup>	Information not available at time of printing. See your dealer for details.	7.4 seconds.	Information not available at time of printing. See your dealer for details.
Fuel economy, EPA estimate highway estimate	Information not available at time of printing. See your dealer for details.	Information not available at time of printing. See your dealer for details.	Information not available at time of printing. See your dealer for details.
Towing capacity <sup>4</sup>	7,500 lbs (Class IV)	7,500 lbs (Class IV)	7,500 lbs (Class IV)

Please see page 77 for Endnotes.

SPECIFICATIONS AND EQUIPMENT

	GL 320 CDI <sup>6</sup>	GL 450	GL 550	60   61
<b>CHASSIS</b>				
Suspension configuration	Front: Independent double wishbone. Antidive geometry. Stabilizer bar. Rear: Independent 4-arm multilink. Geometry for antisquat and alignment control. Stabilizer bar.			
Air suspension	4-wheel air suspension with spring-struts.	4-wheel air suspension with spring-struts.	4-wheel air suspension with spring-struts.	4-wheel air suspension with spring-struts.
Steering	Rack-and-pinion steering with power assist. Turning circle: 39.7 ft curb-to-curb.	Rack-and-pinion steering with power assist. Turning circle: 39.7 ft curb-to-curb.	Rack-and-pinion steering with power assist. Turning circle: 39.7 ft curb-to-curb.	Rack-and-pinion steering with power assist. Turning circle: 39.7 ft curb-to-curb.
<b>WHEELS/TIRES</b>				
Wheels	18" 5-spoke aluminum-alloy, 8.5x18 <sup>7</sup>	18" 5-spoke aluminum-alloy, 8.5x18 <sup>7</sup>	21" AMG 5-spoke aluminum-alloy, 10x21 <sup>7</sup>	
Tires	265/60 R18, all-season.	265/60 R18, all-season.	295/40 R21, all-season.	

BRAKES

Brake system	Dual-circuit power-assist 4-wheel disc.	Dual-circuit power-assist 4-wheel disc.	Dual-circuit power-assist 4-wheel disc.
Brake discs—calipers, front Brake discs—calipers, rear	14.7" ventilated—cast-iron dual-piston fixed. 13.0" ventilated—cast-iron single-piston floating.	14.7" ventilated—cast-iron dual-piston fixed. 13.0" ventilated—cast-iron single-piston floating.	14.7" ventilated—cast-iron dual-piston fixed. 13.0" ventilated—cast-iron single-piston floating.
Antilock Braking System (ABS) and Brake Assist (BAS)	Standard.	Standard.	Standard.

EXTERIOR DIMENSIONS

Wheelbase	121.1 in	121.1 in	121.1 in
Overall length	200.6 in	200.6 in	200.6 in
Overall height	72.4 in–75.6 in	72.4 in–75.6 in	73.4 in–75.6 in
Overall width	75.6 in–83.7 in	75.6 in–83.7 in	75.0 in–84.7 in
Track, front—rear	65.0 in—65.1 in	65.0 in—65.1 in	65.0 in—65.1 in
Curb weight	5,296 lbs	5,280 lbs	5,434 lbs
Ground clearance	7.8 in–10.9 in	7.8 in–10.9 in 7.8 in–12.1 in with optional Enhanced Off-Road Package.	7.8 in–10.9 in

Please see page 77 for Endnotes.

INTERIOR DIMENSIONS<sup>37</sup>

Front headroom	40.1 in	40.1 in	40.1 in
Front legroom	40.3 in	40.3 in	40.3 in
2nd-row headroom	40.6 in	40.6 in	40.6 in
2nd-row legroom	39.5 in	39.5 in	39.5 in
3rd-row headroom	38.2 in	38.2 in	38.2 in
3rd-row legroom	34.2 in	34.2 in	34.2 in
Cargo volume, 2nd/3rd rows folded	83.3 cu ft	83.3 cu ft	83.3 cu ft
Cargo length, 2nd/3rd rows folded	83.8 in	83.8 in	83.8 in



	R 320 CDI <sup>6</sup>	R 350 2WD	R 350
ENGINE			
Engine size and type	2,987-cc turbocharged DOHC 24-valve V-6	3,498-cc DOHC 24-valve V-6	3,498-cc DOHC 24-valve V-6
Construction	Cast-iron cylinder block with aluminum-alloy head.	Aluminum-alloy cylinder block.	Aluminum-alloy cylinder block.
Net power	215 hp @ 4,000 rpm	268 hp @ 6,000 rpm	268 hp @ 6,000 rpm
Net torque	398 lb-ft @ 1,600–2,400 rpm	258 lb-ft @ 2,400–5,000 rpm	258 lb-ft @ 2,400–5,000 rpm
Compression ratio	17.7:1	10.7:1	10.7:1
Fuel requirement	Ultra-low-sulfur diesel fuel.	Premium unleaded gasoline.	Premium unleaded gasoline.
Fuel tank (capacity—reserve)	21.13 gal—3.4 gal	21.13 gal—3.4 gal	21.13 gal—3.4 gal

DRIVETRAIN			
Transmission	7-speed automatic. Electronically controlled driver-adaptive shifting.	7-speed automatic. Electronically controlled driver-adaptive shifting.	7-speed automatic. Electronically controlled driver-adaptive shifting.
Drive configuration	Standard 4MATIC™ 4-wheel drive.	Rear-wheel drive or optional 4MATIC 4-wheel drive.	Standard 4MATIC 4-wheel drive.
Axle ratio	2.92:1	3.90:1	3.90:1

TRACTION/STABILITY			
Electronic Stability Program (ESP®)	Standard.	Standard.	Standard.
4-wheel Electronic Traction System	Standard.	Not available.	Standard.

PERFORMANCE			
Acceleration, 0–60 mph <sup>8</sup>	Information not available at time of printing. See your dealer for details.	Information not available at time of printing. See your dealer for details.	Information not available at time of printing. See your dealer for details.
Fuel economy, EPA estimate highway estimate	Information not available at time of printing. See your dealer for details.	Information not available at time of printing. See your dealer for details.	Information not available at time of printing. See your dealer for details.

Please see page 77 for Endnotes.

SPECIFICATIONS AND EQUIPMENT

	R 320 CDI <sup>6</sup>	R 350 2WD	R 350	62   63
CHASSIS				
Suspension configuration	Front: Independent double wishbone. Antidive geometry. Stabilizer bar. Rear: Independent 4-arm multilink. Geometry for antisquat and alignment control. Stabilizer bar.			
Airmatic Semi-Active Suspension with Adaptive Damping System (ADS-II)	Optional.	Optional.	Optional.	
Steering	Rack-and-pinion steering with constant power assist. Turning circle: 40.7 ft curb-to-curb.	Rack-and-pinion steering with constant power assist. Turning circle: 40.7 ft curb-to-curb.	Rack-and-pinion steering with constant power assist. Turning circle: 40.7 ft curb-to-curb.	

WHEELS/TIRES				
Wheels	18" 5-twin-spoke, 8.0x18 <sup>7</sup>	18" 5-twin-spoke, 8.0x18 <sup>7</sup>	18" 5-twin-spoke, 8.0x18 <sup>7</sup>	
Tires	255/55 R18, all-season.	255/55 R18, all-season.	255/55 R18, all-season.	

BRAKES				
Brake system	Dual-circuit power-assist 4-wheel disc.	Dual-circuit power-assist 4-wheel disc.	Dual-circuit power-assist 4-wheel disc.	
Brake discs, front Brake discs, rear	13.0" internally ventilated. 13.0" solid.	13.0" internally ventilated. 13.0" solid.	13.0" internally ventilated. 13.0" solid.	
Antilock Braking System (ABS) and Brake Assist (BAS)	Standard.	Standard.	Standard.	

	R 320 CDI <sup>6</sup>	R 350 2WD	R 350
EXTERIOR DIMENSIONS			
Wheelbase	126.6 in	126.6 in	126.6 in
Overall length	203 in	203 in	203 in
Overall height	65.4 in	65.2 in	65.2 in
Overall width	75.7 in–77.5 in	75.7 in–77.5 in	75.7 in–77.5 in
Track, front—rear	65.5 in—65.3 in	65.5 in—65.3 in	65.5 in—65.3 in
Curb weight	5,092 lbs (6-passenger) 5,191 lbs (7-passenger)	Information not available at time of printing. See your dealer for details.	4,938 lbs (6-passenger) 5,037 lbs (7-passenger)

Please see page 77 for Endnotes.

	R 320 CDI <sup>6</sup>	R 350 2WD	R 350
INTERIOR DIMENSIONS <sup>37</sup>			
Front headroom	39.8 in	39.8 in	39.8 in
Front legroom	39.8 in	39.8 in	39.8 in
Rear headroom	2nd row: 40.4 in 3rd row: 37.2 in	2nd row: 40.4 in 3rd row: 37.2 in	2nd row: 40.4 in 3rd row: 37.2 in
Rear legroom	2nd row: 36.2 in 3rd row: 32.4 in	2nd row: 36.2 in 3rd row: 32.4 in	2nd row: 36.2 in 3rd row: 32.4 in
Cargo volume, rear seats folded <sup>5</sup>	85 cu ft	85 cu ft	85 cu ft
Cargo length, 2nd/3rd rows folded	63 in/92 in	63 in/92 in	63 in/92 in



ENGINE

Engine size and type	4,966-cc SOHC 24-valve V-8	5,439-cc AMG-built supercharged SOHC 24-valve V-8
Construction	Aluminum-alloy cylinder block.	Aluminum-alloy cylinder block.
Net power	292 hp @ 5,500 rpm	493 hp @ 6,100 rpm
Net torque	336 lb-ft @ 2,800–4,000 rpm	516 lb-ft @ 2,800–4,500 rpm
Compression ratio	10.0:1	9.0:1
Fuel requirement	Premium unleaded gasoline, 91 pump octane.	Premium unleaded gasoline, 91 pump octane.
Fuel tank (capacity)	25.4 gal	25.4 gal

DRIVETRAIN

Transmission	7-speed automatic. Electronically controlled driver-adaptive shifting.	5-speed automatic. Electronically controlled driver-adaptive shifting.
Drive configuration	4-wheel drive with electromechanically locking center, front and rear differentials, activated by driver.	4-wheel drive with electromechanically locking center, front and rear differentials, activated by driver.
Transfer case	Two-speed, electronically controlled via console switch.	Two-speed, electronically controlled via console switch.
Transfer case ratios	Normal range: 0.87:1 Low range: 2.16:1	Normal range: 0.87:1 Low range: 2.16:1
Axle ratio	Front and rear: 4.38:1	Front and rear: 4.38:1

TRACTION/STABILITY

Electronic Stability Program (ESP®)	Standard (with all three differentials unlocked).	Standard.
4-wheel Electronic Traction System	Standard (with all three differentials unlocked).	Standard (with all three differentials unlocked).

PERFORMANCE

Acceleration, 0–60 mph <sup>8</sup>	7.4 seconds.	5.4 seconds.
Fuel economy, EPA estimate highway estimate	Information not available at time of printing. See your dealer for details.	Information not available at time of printing. See your dealer for details.
Towing capacity <sup>4</sup>	7,000 lbs (Class IV)	7,000 lbs (Class IV)

Please see page 77 for Endnotes.

CHASSIS

Suspension configuration	Front and rear rigid axles with longitudinal and transverse links, coil springs and gas-pressurized shock absorbers. Front stabilizer bar.	Front and rear rigid axles with longitudinal and transverse links, coil springs and gas-pressurized shock absorbers. Front stabilizer bar.
Wheel travel	8.0 in	8.0 in
Steering	Recirculating-ball with power assist and hydraulic damper. Turning circle: 43.5 ft curb-to-curb.	Recirculating-ball with power assist and hydraulic damper. Turning circle: 43.5 ft curb-to-curb.

WHEELS/TIRES

Wheels	18" 5-spoke, 7.5x18 <sup>7</sup>	18" AMG 5-spoke, 9.5x18 <sup>7</sup>
Tires	265/60 R18, all-season.	285/55 R18, high-performance <sup>7</sup>
Spare tire	Matching tire and wheel.	265/60 R18 110V high-performance tire <sup>7</sup> and 7.5x18 5-spoke wheel.

BRAKES

Brake system	Dual-circuit power-assist 4-wheel disc.	AMG-enhanced dual-circuit power-assist 4-wheel disc.
Brake discs, front Brake discs, rear	12.3" internally ventilated. 10.7" solid.	13.8" slotted and internally ventilated. 13.0" slotted and internally ventilated.
Antilock Braking System (ABS) and Brake Assist (BAS)	Standard (with all three differentials unlocked).	Standard (with all three differentials unlocked).

EXTERIOR DIMENSIONS

Wheelbase	112.2 in	112.2 in
Overall length	185.6 in, including spare tire.	185.6 in, including spare tire.
Overall height	77.8 in	77.8 in
Overall width	71.3 in	73.4 in
Track, front—rear	59.6 in—59.6 in	59.6 in—59.6 in
Curb weight	5,510 lb	5,635 lb

INTERIOR DIMENSIONS<sup>37</sup>

Front headroom	42.2 in	42.2 in
Front legroom	52.5 in	52.5 in
Rear headroom	40.0 in	40.0 in
Rear legroom	41.9 in	41.9 in
Cargo volume, rear seats folded <sup>5</sup>	79.5 cu ft	79.5 cu ft

Please see page 77 for Endnotes.



EXTERIOR			
–	●	●	AMG front and rear bumpers.
●	●	–	Silver grille with chrome ribs.
–	–	●	High-gloss black grille with chrome ribs.
●	●	–	Dual square polished stainless-steel exhaust tips.
–	–	●	Dual chrome AMG twin tailpipes.
●	●	●	Power tilt/sliding tinted-glass sunroof with sunshade.
●	●	●	Dual heated power mirrors.
●	●	●	Privacy glass for rear doors, rear quarter windows and liftgate.
●	●	●	Rain-sensing wipers with heated nozzles, lines and reservoir.
●	●	●	Rear-window wiper with washer.
●	●	●	Electrically heated rear window with auto-shutoff based on time, driving speed and outside temperature.
●	●	●	Hydraulically assisted liftgate closing feature.
●	●	●	Black protective-coated roof rails (with 220-lb roof load capacity).
○ <sup>38</sup>	●	●	Running boards.
●	●	●	Halogen headlamps and front foglamps. Single red rear foglamp in left taillamp.
○ <sup>38</sup>	○ <sup>38</sup>	●	Bi-Xenon headlamps with corner-illuminating foglamps.
●	●	●	Selectable light-sensing headlamps.
●	●	●	Programmable daytime running lamps with auto-on override in darkness.

INTERIOR			
●	●	●	Multifunction steering wheel.
●	●	●	Power windows, all with one-touch express-up/down.
●	●	–	4-way (tilt/telescoping) manually adjustable steering column.
○ <sup>38</sup>	○ <sup>38</sup>	●	4-way (tilt/telescoping) power-adjustable steering column.
●	●	●	Electronic cruise control.
●	●	●	12-volt power outlets in ashtray (with lighter), at rear of front console, in cargo area and in passenger footwell.
○ <sup>38</sup>	○ <sup>38</sup>	●	Auto-dimming rearview mirror.

CLIMATE CONTROL			
●	●	–	Dual-zone climate control.
○ <sup>38</sup>	○ <sup>38</sup>	●	3-zone climate control.
●	●	●	Charcoal activated dust and pollen filter.
●	●	●	Tunnel mode offers one-touch closing of all windows, the sunroof and cabin air intake via the air-recirculation button.

SEATING			
●	●	–	8-way power-adjustable front seats. Driver's adjustable lumbar support.
○ <sup>38</sup>	○ <sup>38</sup>	●	10-way power-adjustable front seats with memory.
○ <sup>38</sup>	●	●	Heated front seats.
●	●	●	60/40-split-folding rear seatbacks and flip-forward seat cushions.
–	–	●	Multicontour seats.
●	●	–	MB-Tex upholstery.
–	–	●	AMG Premium Leather upholstery and AMG floor mats.
●	●	–	Leather-trimmed steering wheel.
–	–	●	AMG Premium Leather-trimmed steering wheel.
●	–	–	Polished Brown Birdseye Maple wood trim on console and doors. Aluminum trim on console assist handles.
○ <sup>38</sup>	●	●	Polished Burl Walnut wood trim on console and doors. Aluminum trim on console assist handles.

AUDIO/NAVIGATION/TELEMATICS			
●	●	●	Cockpit Management and Data (COMAND) system integrates the audio, Hands-Free Communication <sup>39</sup> and Navigation <sup>39</sup> systems, as well as other vehicle settings.
●	●	–	8-speaker audio system with automatic vehicle-speed-sensitive volume adjustment.
○ <sup>38</sup>	○ <sup>38</sup>	●	harman/kardon® LOGIC7® digital surround-sound system.
○ <sup>38</sup>	○ <sup>38</sup>	○ <sup>38</sup>	iPod® Integration Kit. <sup>36</sup>
●	●	●	Tele Aid System.

INSTRUMENTATION			
●	●	–	Electronic analog speedometer, tachometer, fuel gauge and quartz clock.
–	–	●	AMG instrument cluster with silver-color aluminum trim panel and AMG logo.
●	●	●	Digital display of odometer and gear/mode selection.
●	●	●	Multifunction display in instrument cluster controls: <ul style="list-style-type: none"><li>• Trip meter and outside temperature indicator.</li><li>• Digital speedometer, Maintenance System (see below) and oil-level check.</li><li>• All audio features.</li><li>• DVD-based Navigation System route guidance.<sup>39</sup></li><li>• Vehicle reminder and message indicator.</li><li>• Driver-programmable settings for instruments and lighting, vehicle and convenience features.</li><li>• Trip computer (elapsed time, fuel consumption and distance to empty).</li><li>• Distronic Adaptive Cruise Control settings.<sup>39</sup></li><li>• Mobile phone book.<sup>39</sup></li></ul>
●	●	●	Tire Pressure Monitoring System.
●	●	●	Mercedes-Benz Maintenance System Plus displays distance remaining to next basic maintenance service, indicates type of service due and provides automatic reminder feature. System also monitors brake-pad wear.

LOCKING/SECURITY			
●	●	●	SmartKey remote control integrates: Remote Door Lock/Unlock buttons, trunk opener, removable valet key and panic alarm. Driver may selectively unlock only the driver's door and fuel filler or all doors plus the trunk and fuel filler.
●	●	●	SmartKey offers infrared-remote opening/closing of windows and sunroof.
●	●	●	Driver-programmable drive-away locking automatically locks the doors when the vehicle reaches 9 mph.
●	●	●	Night security illumination uses the vehicle's exterior lights to help illuminate a path after parking.
●	●	●	Antitheft alarm with remote panic feature.
●	●	●	Integrated 3-button garage door control, compatible with HomeLink® components and some other systems.
●	●	●	Tele Aid GPS-based Stolen Vehicle Recovery. <sup>40</sup>
●	●	●	Tele Aid Remote Door Unlock. <sup>40</sup>
●	●	●	Tele Aid Automatic Alarm Notification alerts Mercedes-Benz to contact vehicle owner if antitheft alarm sounds. <sup>40</sup>

RESTRAINT SYSTEMS			
●	●	●	<b>Integrated Restraint System:</b> <ul style="list-style-type: none"><li>• Driver and front passenger are each provided with a dual-stage front air bag (adaptive for the front passenger), a side-impact air bag and a 3-point seat belt with an Emergency Tensioning Device (ETD) and adaptive belt force limiter.<sup>17</sup></li><li>• 2nd-row outboard passengers are each provided with a side-impact air bag and a 3-point seat belt with an ETD and belt force limiter.<sup>17</sup></li><li>• 2nd-row center passenger is provided with a 3-point seat belt.</li></ul>
●	●	●	<b>Window Curtain Air Bags:</b> <ul style="list-style-type: none"><li>• In a side impact exceeding a preset deployment threshold, a multichamber air bag deploys along the front and rear side-door windows on the affected side of the vehicle.<sup>17</sup></li><li>• An integrated rollover sensor automatically deploys the ETDs and, if deemed necessary, the Window Curtain Air Bags in the event of a detected rollover.<sup>17</sup></li></ul>
●	●	●	Dual-stage front air bags are deployed in response to frontal impact severity exceeding a preset deployment threshold. <sup>17</sup>
●	●	●	<b>Occupant Classification System (OCS):</b> <ul style="list-style-type: none"><li>• OCS automatically adjusts the inflation rate of the front passenger's front air bag based on the weight category determined by weight sensor readings from the front passenger seat.<sup>41</sup></li></ul>
●	●	●	ETDs are deployed in a front or rear impact exceeding a preset threshold of severity, or certain rollovers. A front ETD will not deploy if seat belt is unfastened.
●	●	●	Tele Aid Automatic Collision Notification engages the SOS function (in vehicles with an activated Tele Aid System) if an air bag or ETD deploys. <sup>40</sup>
●	●	●	Universal LATCH (Lower Anchors and Tethers for Children) system at center and rear outboard seating positions. Selectable passenger seat-belt retractors help secure child seats. <sup>17</sup>
●	●	●	Front seat belts include manually height-adjustable shoulder belts and lower points attached to seat frames.
●	●	●	Active Front Head Restraints, adjustable for height and fore–aft.
●	●	●	Three individually height-adjustable and retractable rear head restraints.



INDIVIDUAL OPTIONS				OPTION PACKAGES			
<input type="radio"/>	<input type="radio"/>	<input type="radio"/>	Keyless Go.	<input type="radio"/>	<input type="radio"/>	<input checked="" type="radio"/>	<b>Premium 1 Package:</b> <ul style="list-style-type: none"><li>Rear View Camera.</li><li>Hands-Free Communication System.</li><li>Rear-seat audio and fan controls.</li><li>DVD-based Navigation System.</li><li>SIRIUS Satellite Radio.</li><li>harman/kardon® LOGIC7® digital surround-sound system.</li><li>Power liftgate.</li></ul>
<input type="radio"/>	<input type="radio"/>	<input type="radio"/>	Class III trailer hitch. <sup>23</sup>	<input type="radio"/>	<input type="radio"/>	<input checked="" type="radio"/>	<b>Premium 2 Package:</b> Includes contents of Premium 1 Package plus: <ul style="list-style-type: none"><li>Auto-dimming mirrors.</li><li>10-way power-adjustable driver's seat with memory.</li><li>Bi-Xenon headlamps with Active Curve Illumination.</li><li>Corner-illuminating foglamps.</li><li>4-way (tilt/telescoping) power-adjustable steering column.</li><li>Power fold-in side mirrors.</li><li>Front and rear skid plates.</li></ul>
<input type="radio"/>	<input checked="" type="radio"/>	<input checked="" type="radio"/>	Heated front seats.				
<input type="radio"/>	<input type="radio"/>	<input type="radio"/>	Parktronic audiovisual parking assist.				
<input type="radio"/>	<input type="radio"/>	<input type="radio"/>	Metallic paint (no-charge option on ML 63 AMG).				
<input type="radio"/>	<input type="radio"/>	<input checked="" type="radio"/>	6-disc CD changer. <sup>42</sup>				
<input type="radio"/>	<input checked="" type="radio"/>	<input checked="" type="radio"/>	Running boards.	<input type="radio"/>	<input type="radio"/>	<input checked="" type="radio"/>	<b>Premium 3 Package:</b> Includes contents of Premium 1 and 2 Packages plus: <ul style="list-style-type: none"><li>Airmatic suspension.</li><li>Adaptive damping shocks.</li><li>3-zone climate control.</li><li>Infrared-reflecting (IR) glass.<sup>43</sup></li><li>Cargo Management System.</li><li>Cargo net (standard ML 550).</li></ul>
<input type="radio"/>	<input type="radio"/>	<input type="radio"/>	Voice Control. <sup>42</sup>				
<input type="radio"/>	<input type="radio"/>	<input type="radio"/>	Rear-Seat Entertainment System. Dual screens with DVD player. <sup>26</sup>				
<input type="radio"/>	<input type="radio"/>	<input type="radio"/>	DISTRONIC Adaptive Cruise Control.	<input type="radio"/>	<input type="radio"/>	<input type="radio"/>	<b>Heating Package:</b> <sup>42</sup> <ul style="list-style-type: none"><li>Heated front seats (standard ML 550 and ML 63 AMG).</li><li>Heated rear seats.</li><li>Heated leather steering wheel (not available ML 63 AMG).</li></ul>
<input type="radio"/>	<input type="radio"/>	<input checked="" type="radio"/>	Wood/leather steering wheel. <sup>42</sup>	<input type="radio"/>	<input type="radio"/>	<input checked="" type="radio"/>	<b>Full Leather Seating Package:</b> <ul style="list-style-type: none"><li>Wood/leather steering wheel.</li><li>Burl Walnut wood trim (standard ML 550).</li><li>Interior Ambient Light Package.</li></ul>
<input type="radio"/>	<input type="radio"/>	<input type="radio"/>		<input type="radio"/>	<input type="radio"/>	<input checked="" type="radio"/>	<b>Interior Appearance Package:</b> <ul style="list-style-type: none"><li>Alcantara inserts.</li><li>Interior Ambient Lighting Package.</li><li>Aluminum trim.</li><li>Rubber-studded aluminum pedals.</li><li>Premium interior lighting.</li></ul>

● Standard. ○ Optional or included with a package. – Not available.  
Please see page 77 for Endnotes.

OPTIONS AND PACKAGES

GL 320 CDI <sup>6</sup>	GL 450	GL 550	GL 320 CDI <sup>6</sup>	GL 450	GL 550	68   69
EXTERIOR			CLIMATE CONTROL			
●	●	–	●	●	–	
–	–	●	○ <sup>44</sup>	○ <sup>44</sup>	●	3-zone climate control.
○ <sup>44</sup>	○ <sup>44</sup>	●	●	●	●	Charcoal-activated dust and pollen filter.
●	●	●	●	●	●	Tunnel mode offers one-touch closing of all windows, the sunroof and cabin air intake via the air-recirculation button.
●	●	●				
●	●	●				
●	●	●				
●	●	●				
○ <sup>44</sup>	○ <sup>44</sup>	●				
●	●	●				
●	●	●				
○ <sup>44</sup>	○ <sup>44</sup>	●				
●	●	●				
●	●	–				
●	●	●				
–	–	●				
●	●	●				
○ <sup>44</sup>	○ <sup>44</sup>	●				
●	●	●				
●	●	●				
○ <sup>44</sup>	○ <sup>44</sup>	●				
–	–	●				
○ <sup>44</sup>	○ <sup>44</sup>	●				
○ <sup>44</sup>	○ <sup>44</sup>	●				
INTERIOR			SEATING			
●	●	●	●	●	●	
●	●	●	–	–	●	8-way power-adjustable front seats. Driver-adjustable lumbar support.
●	●	●	●	●	●	Drive-Dynamic multicontour driver's seat and multicontour front passenger seat.
●	●	●	●	●	●	Heated front seats.
●	●	●	○ <sup>44</sup>	○ <sup>44</sup>	●	Heated rear seats.
●	●	●	●	●	●	2nd-row 60/40-split-folding rear seatbacks.
●	●	●	●	●	●	3rd-row split-folding power seatbacks.
●	●	–	●	●	–	Brown Birdseye Maple wood trim on dashboard and doors.
○ <sup>44</sup>	○ <sup>44</sup>	●	○ <sup>44</sup>	○ <sup>44</sup>	●	Burl Walnut wood trim on dashboard and doors.
●	●	–	●	●	–	Leather-wrapped steering wheel.
○ <sup>44</sup>	○ <sup>44</sup>	●	○ <sup>44</sup>	○ <sup>44</sup>	●	Wood/leather steering wheel (not available with Heating Package).
●	●	–	●	●	–	MB-Tex upholstery.
○ <sup>44</sup>	○ <sup>44</sup>	●	○ <sup>44</sup>	○ <sup>44</sup>	●	Leather upholstery and trim.
			AUDIO/NAVIGATION/TELEMATICS			
●	●	●	●	●	●	
○ <sup>44</sup>	○ <sup>44</sup>	●				Cockpit Management and Data (COMAND) system integrates the audio, Hands-Free Communication <sup>39</sup> and Navigation <sup>39</sup> systems, as well as other vehicle settings.
●	●	●	○ <sup>44</sup>	○ <sup>44</sup>	●	DVD-based Navigation System.
●	●	–	●	●	●	6-disc CD changer with MP3 player capabilities.
●	●	●				8-speaker audio system with automatic vehicle-speed-sensitive volume adjustment.
○ <sup>44</sup>	○ <sup>44</sup>	●				harman/kardon® LOGIC7® digital surround-sound system, boasting 14 speakers, a 5.1-channel amplifier, multichannel digital surround-sound technology and Digital Dynamic Volume Control.
●	●	●				Auxiliary input jack for digital media players.
○ <sup>44</sup>	○ <sup>44</sup>	●				2nd-row audio control.
○ <sup>44</sup>	○ <sup>44</sup>	●				Hands-Free Communication System.
●	●	●				Tele Aid System.



● Standard. ○ Optional or included with a package. – Not available.  
Please see page 77 for Endnotes.



INSTRUMENTATION				RESTRAINT SYSTEMS			
●	●	●	Electronic analog speedometer, tachometer, fuel gauge and quartz clock.	●	●	●	<b>Integrated Restraint System:</b> <ul style="list-style-type: none"><li>Driver and front passenger are each provided with a dual-stage front air bag (adaptive for the front passenger), a side-impact air bag and a 3-point seat belt with an Emergency Tensioning Device (ETD) and adaptive belt force limiter.<sup>17</sup></li><li>2nd- and 3rd-row outboard passengers are each provided with a 3-point seat belt with an ETD and belt force limiter.</li><li>2nd-row outboard passengers are each provided with a side-impact air bag.<sup>17</sup></li><li>2nd-row center passenger is provided with a 3-point seat belt.</li></ul>
●	●	●	Digital display of odometer and gear/mode selection.				
●	●	●	Multifunction display in instrument cluster controls: <ul style="list-style-type: none"><li>Trip meter and outside temperature indicator.</li><li>Digital speedometer, Maintenance System (see below) and oil-level check.</li><li>All audio features.</li><li>DVD-based Navigation System route guidance.<sup>39</sup></li><li>Vehicle reminder and message indicator.</li><li>Programmable settings for instruments and lighting, vehicle and convenience features.</li><li>Trip computer (elapsed time, fuel consumption and distance to empty).</li><li>Mobile phone book.<sup>39</sup></li></ul>				
●	●	●	Tire Pressure Monitoring System.	●	●	●	<b>Window Curtain Air Bags:</b> <ul style="list-style-type: none"><li>In a side impact exceeding a preset deployment threshold, a multichamber air bag deploys along the front and rear side-door windows on the affected side of the vehicle.<sup>17</sup></li><li>An integrated rollover sensor automatically deploys the ETDs and, if deemed necessary, the Window Curtain Air Bags (spanning all three rows) in the event of a detected rollover.<sup>17</sup></li></ul>
●	●	●	Mercedes-Benz Maintenance System Plus displays distance remaining to next basic maintenance service, indicates type of service due and provides automatic reminder feature. System also monitors brake-pad wear.	●	●	●	<b>Active Front Head Restraints</b> , adjustable for height and fore-aft.

LOCKING/SECURITY				OPTION PACKAGES			
●	●	●	SmartKey remote control integrates: Remote Door Lock/Unlock buttons, Tailgate Unlock button and panic alarm.	○	○	–	<b>19" Wheel Package:</b> <ul style="list-style-type: none"><li>19" 5-twin-spoke alloy wheels with all-season tires.</li><li>Front and rear skid plates.</li><li>Black roof crossbars.</li></ul>
●	●	●	SmartKey offers infrared-remote opening/closing of windows and sunroof.	–	○	–	<b>Off-Road Package:</b> <ul style="list-style-type: none"><li>Adaptive Damping System.</li><li>Two locking differentials.</li><li>Two-speed transfer case.</li><li>Front and rear skid plates.</li><li>Underride protection.</li><li>Roof crossbars.</li><li>Dynamic compass display.</li></ul>
●	●	●	Driver-programmable drive-away locking automatically locks the doors when the car reaches 9 mph.	○	○	●	<b>Heating Package:</b> <ul style="list-style-type: none"><li>Heated rear seats.</li><li>Heated leather steering wheel.<sup>45</sup></li></ul>
●	●	●	Night security illumination uses the car's exterior lights to help illuminate a path after parking.	○	○	●	<b>Premium 1 Package:</b> <ul style="list-style-type: none"><li>Rear View Camera.</li><li>Parktronic audiovisual parking assist.</li><li>Power-adjustable passenger seat with memory.</li><li>Auto-dimming rearview and left-side mirrors.</li><li>Memory mirrors and power-adjustable driver's seat with memory.</li><li>Hands-Free Communication System.</li><li>4-way (tilt/telescoping) power-adjustable steering column.</li><li>Glass sunroof.</li><li>Power fold-in side mirrors.</li><li>2nd-row audio controls.</li><li>DVD-based Navigation System.</li><li>SIRIUS Satellite Radio.</li><li>harman/kardon® LOGIC7® digital surround-sound system.</li><li>Power liftgate.</li><li>Cargo net.</li></ul>
●	●	●	Antitheft alarm with remote panic feature.				
●	●	●	Integrated 3-button garage door control, compatible with HomeLink® components and some other systems.				
●	●	●	Tele Aid GPS-based Stolen Vehicle Recovery <sup>40</sup>				
●	●	●	Tele Aid Remote Door Unlock. <sup>40</sup>				
●	●	●	Tele Aid Automatic Alarm Notification alerts Mercedes-Benz to contact vehicle owner if antitheft alarm sounds. <sup>40</sup>				

INDIVIDUAL OPTIONS				OPTION PACKAGES (continued)			
○	○	○	Keyless Go.	○	○	●	<b>Premium 2 Package:</b> Includes contents of Premium 1 Package plus: <ul style="list-style-type: none"><li>Bi-Xenon headlamps with Active Curve Illumination.</li><li>Corner-illuminating foglamps.</li><li>Heated headlamp washers.</li><li>3-zone climate control.</li><li>Infrared-reflecting (IR) glass (not available GL 550).<sup>43</sup></li></ul>
○	○	○	Trailer hitch.				
○	○	●	Voice Control.				
○	○	○	Rear-Seat Entertainment System. Dual screens with DVD player. <sup>26</sup>				
○	○	●	Factory-installed running boards.				
–	–	○	Heated leather steering wheel. <sup>45</sup>				
○	○	●	Metallic paint.				
○	○	–	DISTRONIC Adaptive Cruise Control.				
○	○	●	3-zone climate control.				

OPTION PACKAGES				WHEELS		
○	○	–	<b>19" Wheel Package:</b> <ul style="list-style-type: none"><li>19" 5-twin-spoke alloy wheels with all-season tires.</li><li>Front and rear skid plates.</li><li>Black roof crossbars.</li></ul>			
–	○	–	<b>Off-Road Package:</b> <ul style="list-style-type: none"><li>Adaptive Damping System.</li><li>Two locking differentials.</li><li>Two-speed transfer case.</li><li>Front and rear skid plates.</li><li>Underride protection.</li><li>Roof crossbars.</li><li>Dynamic compass display.</li></ul>	<b>18" 5-spoke wheel</b> <i>Standard GL 320 CDI and GL 450</i>	<b>19" 5-twin-spoke wheel</b> <i>Optional GL 320 CDI and GL 450</i>	<b>21" AMG 5-spoke wheel</b> <i>Standard GL 550</i>
○	○	●	<b>Heating Package:</b> <ul style="list-style-type: none"><li>Heated rear seats.</li><li>Heated leather steering wheel.<sup>45</sup></li></ul>			
○	○	●	<b>Premium 1 Package:</b> <ul style="list-style-type: none"><li>Rear View Camera.</li><li>Parktronic audiovisual parking assist.</li><li>Power-adjustable passenger seat with memory.</li><li>Auto-dimming rearview and left-side mirrors.</li><li>Memory mirrors and power-adjustable driver's seat with memory.</li><li>Hands-Free Communication System.</li><li>4-way (tilt/telescoping) power-adjustable steering column.</li><li>Glass sunroof.</li><li>Power fold-in side mirrors.</li><li>2nd-row audio controls.</li><li>DVD-based Navigation System.</li><li>SIRIUS Satellite Radio.</li><li>harman/kardon® LOGIC7® digital surround-sound system.</li><li>Power liftgate.</li><li>Cargo net.</li></ul>			



## EXTERIOR

●	●	●	AMG bodystyling.
●	●	●	Dual chrome exhaust tips.
●	●	●	Dual heated power mirrors.
●	●	●	Privacy glass for rear doors, rear quarter windows and tailgate.
●	●	●	Rain-sensing wipers with heated nozzles, lines and reservoir.
●	●	●	Rear-window wiper with washer.
●	●	●	Electrically heated rear window with auto-shutoff based on time, driving speed and outside temperature.
●	●	●	Liftgate close assist.
●	●	●	Halogen headlamps and front foglamps. Single red rear foglamp in left taillamp.
●	●	●	Selectable light-sensing headlamps.
●	●	●	Programmable daytime running lamps with auto-on override in darkness.

## INTERIOR

●	●	●	Multifunction steering wheel.
●	●	●	Power front- and 2nd-row windows, all with one-touch express-up/down.
●	●	●	4-way (tilt/telescoping) manually adjustable steering column.
●	●	●	Electronic cruise control.
●	●	●	12-volt power outlets in ashtray, below glovebox, behind center console and in cargo area.

## CLIMATE CONTROL

●	●	●	Dual-zone climate control.
●	●	●	Electrostatic dust and pollen filter.
●	●	●	Tunnel mode offers one-touch closing of all windows, the sunroof <sup>39</sup> and cabin air intake via the air-recirculation button.

## SEATING

●	●	●	8-way power-adjustable driver's seat. Driver's adjustable lumbar support.
●	●	●	MB-Tex front and rear upholstery.
●	●	●	Birdseye Maple wood trim on console and doors. Aluminum trim along console.

## AUDIO/NAVIGATION/TELEMATICS

●	●	●	Cockpit Management and Data (COMAND) system integrates the audio, Hands-Free Communication <sup>39</sup> and Navigation <sup>39</sup> systems, as well as other vehicle settings.
●	●	●	8-speaker audio system with automatic vehicle-speed-sensitive volume adjustment.
●	●	●	Auxiliary input jack for digital media players.

## INSTRUMENTATION

●	●	●	Electronic analog speedometer, tachometer, fuel gauge and quartz clock.
●	●	●	Digital display of odometer and gear/mode selection.
●	●	●	Multifunction display in instrument cluster controls: <ul style="list-style-type: none"> <li>• Trip meter and outside temperature indicator.</li> <li>• Digital speedometer, Maintenance System (see below) and oil-level check.</li> <li>• All audio features.</li> <li>• DVD-based Navigation System route guidance.<sup>29</sup></li> <li>• Compass heading or Airmatic suspension<sup>39</sup> settings.</li> <li>• Vehicle reminder and message indicator.</li> <li>• Programmable settings for instruments and lighting and vehicle features.</li> <li>• Trip computer (elapsed time, fuel consumption and distance to empty).</li> <li>• Mobile phone book (with optional Telephone Integration Kit).</li> </ul>
●	●	●	Mercedes-Benz Maintenance System Plus displays distance remaining to next basic maintenance service, indicates type of service due and provides automatic reminder feature. System also monitors brake-pad wear.
●	●	●	Tire Pressure Monitoring System.

## LOCKING/SECURITY

●	●	●	SmartKey remote control integrates: Remote Door Lock/Unlock buttons, Tailgate Unlock button (or optional power tailgate open/close) and panic alarm. Driver may selectively unlock only the driver's door and fuel filler or all doors plus the trunk and fuel filler.
●	●	●	SmartKey offers infrared-remote opening/closing of windows and sunroof. <sup>3</sup>
●	●	●	Driver-programmable drive-away locking automatically locks the doors when the vehicle reaches 9 mph.
●	●	●	Night security illumination uses the vehicle's exterior lights to help illuminate a path after parking.
●	●	●	Antitheft alarm with remote panic feature.
●	●	●	Integrated 3-button garage door control, compatible with HomeLink® components and some other systems.

## OPTIONS AND PACKAGES

## RESTRAINT SYSTEMS

●	●	●	<p><b>Integrated Restraint System:</b></p> <ul style="list-style-type: none"> <li>Driver and front passenger are each provided with a dual-stage front air bag (adaptive for the front passenger), a side-impact air bag and a 3-point seat belt with an Emergency Tensioning Device (ETD) and adaptive belt force limiter.<sup>17</sup></li> <li>2nd-row passengers are each provided with a side-impact air bag.<sup>17</sup></li> <li>2nd- and 3rd-row passengers are each provided with a 3-point seat belt with an ETD and belt force limiter (with 7-seat option, 3rd-row center passenger is provided with a 3-point seat belt only).</li> </ul>
●	●	●	<p><b>Window Curtain Air Bags:</b></p> <ul style="list-style-type: none"> <li>In a side impact exceeding a preset deployment threshold, a multichamber air bag deploys along the front and rear side-door windows on the affected side of the vehicle.<sup>17</sup></li> <li>An integrated rollover sensor automatically deploys the ETDs and, if deemed necessary, the Window Curtain Air Bags (spanning all three rows in the event of a detected rollover).<sup>17</sup></li> </ul>
●	●	●	<p><b>Occupant Classification System (OCS):</b></p> <ul style="list-style-type: none"> <li>OCS automatically adjusts the inflation rate of the front passenger's front air bag based on the weight category determined by weight sensor readings from the front passenger seat.<sup>41</sup></li> </ul>
●	●	●	ETDs are deployed in a front or rear impact exceeding a preset threshold of severity, or certain rollovers. A front ETD will not deploy if seat belt is unfastened.
●	●	●	Universal LATCH (Lower Anchors and Tethers for Children) system at 2nd- and 3rd-row seating positions. Selectable passenger seat-belt retractors help secure child seats. <sup>17</sup>
●	●	●	Front seat belts include manually height-adjustable shoulder belts and lower points attached to seat frames.
●	●	●	Active Front Head Restraints, adjustable for height and fore-aft.
●	●	●	Individually height-adjustable head restraints, two in 2nd row (three with 7-seat option) and two in 3rd row.

## INDIVIDUAL OPTIONS

○	○	○	7-seat option.
○	○	○	DISTRONIC Adaptive Cruise Control.
○	○	○	2nd-row sunshades.
○	○	○	Voice Control.
○	○	○	2nd-row center console.
○	○	○	19" AMG 5-spoke alloy wheels. <sup>7</sup>
—	○	—	20" AMG 5-spoke alloy wheels. <sup>7</sup>
○	○	○	6-disc CD changer.
○	○	○	Rear-Seat Entertainment System. Dual screens with DVD player. <sup>26</sup>
○	○	○	Heated front seats.
○	○	○	Keyless Go.
○	○	○	3-zone climate control with infrared-reflecting (IR) glass. <sup>13</sup>

● Standard. ○ Optional or included with a package. – Not available.  
Please see page 77 for Endnotes.

## OPTION PACKAGES

<input type="radio"/>	<input type="radio"/>	<input type="radio"/>	<b>Premium 1 Package:</b> <ul style="list-style-type: none"> <li>• Parktronic audiovisual parking assist.</li> <li>• Tele Aid System.</li> <li>• Hands-Free Communication System.</li> <li>• Panorama Roof with electric sunshades.<sup>46</sup></li> <li>• Dual sun visors.</li> <li>• 2nd-row audio controls.</li> <li>• SIRIUS Satellite Radio.</li> <li>• harman/kardon® LOGIC7® digital surround-sound system.</li> <li>• Power rear quarter windows.</li> <li>• Power liftgate.</li> </ul>
<input type="radio"/>	<input type="radio"/>	<input type="radio"/>	<b>Premium 2 Package:</b> Includes contents of Premium 1 Package plus: <ul style="list-style-type: none"> <li>• Rear View Camera.</li> <li>• Auto-dimming rearview and left-side mirrors.</li> <li>• Power-adjustable driver and passenger seats with memory.</li> <li>• 4-way (tilt/telescoping) power-adjustable steering column.</li> <li>• Power fold-in side mirrors.</li> <li>• DVD-based Navigation System.</li> </ul>
<input type="radio"/>	<input type="radio"/>	<input type="radio"/>	<b>Premium 3 Package:</b> Includes contents of Premium 2 Package plus: <ul style="list-style-type: none"> <li>• Air suspension.</li> <li>• Adaptive damping shocks.</li> <li>• 3-zone climate control.</li> <li>• Rear air conditioning.</li> <li>• Infrared-reflecting (IR) glass.<sup>43</sup></li> <li>• Cargo net.</li> </ul>
<input type="radio"/>	<input type="radio"/>	<input type="radio"/>	<b>Full Leather Seating Package:</b> <ul style="list-style-type: none"> <li>• Wood/leather steering wheel.</li> <li>• Burl Walnut wood trim.</li> <li>• Interior Ambient Lighting Package.</li> </ul>
<input type="radio"/>	<input type="radio"/>	<input type="radio"/>	<b>Lighting Package:</b> <ul style="list-style-type: none"> <li>• Bi-Xenon headlamps with Active Curve Illumination.</li> <li>• Heated headlamp washers.</li> </ul>
<input type="radio"/>	<input type="radio"/>	<input type="radio"/>	<b>Sport Package:</b> <ul style="list-style-type: none"> <li>• 19" 5-spoke alloy wheels with 255/50 R19 all-season tires.</li> <li>• Exterior chrome accents.</li> <li>• Blue-tinted glass.</li> </ul>
<input type="radio"/>	<input type="radio"/>	<input type="radio"/>	<b>Heating Package:</b> <ul style="list-style-type: none"> <li>• Heated front seats.</li> <li>• Heated rear seats.</li> <li>• Heated leather steering wheel.</li> </ul>

## WHEELS



18" 5-twin-spoke wheel  
Standard all models



19" 5-spoke wheel  
*Optional all models*



19" AMG 5-spoke wheel  
*Optional all models*



20" AMG 5-spoke wheel  
Available R 350 2WD



EXTERIOR			SEATING		
●	●	Aluminum running boards.	●	●	10-way power-adjustable front seats, each with 3-position memory. Driver’s seat memory includes steering column and outside mirror positions.
–	●	Chrome-finish front turn-signal cages, taillamp cages and front-bumper underbar.	●	●	Multicontour driver’s seat with pneumatic side bolsters, dual lumbar supports and thigh support.
–	●	AMG sidepipe exhausts with two stainless-steel tips per side (at rear of running boards).	●	●	Heated front and rear outboard seats.
●	●	Privacy glass for rear doors, rear quarter windows and cargo door.	●	●	60/40-split-folding rear seats with three height-adjustable head restraints.
●	●	Bi-Xenon headlamps with heated high-pressure washers. Corner-illuminating halogen front foglamps. Single red rear foglamp in left taillamp.	●	–	Premium Leather upholstery, including all seat surfaces, head restraints, and upper and lower door-trim inserts.
●	●	Selectable light-sensing headlamps.	–	●	<i>designo</i> Nappa leather upholstery, including seat surfaces, head restraints, center armrest and door-trim inserts.
●	●	Programmable daytime running lamps with auto-on override in darkness.	●	○ <sup>47</sup>	Hand-polished Burl Walnut wood trim on console, doors and dashboard-mounted passenger assist handle.
●	●	Heated power mirrors with integrated turn signals and entrance lamps. Auto-dimming left-side mirror (shifting to Reverse automatically cancels dimming).	–	●	Hand-polished <i>designo</i> Natural Maple wood trim on console, doors and dashboard-mounted passenger assist handle.
●	●	Electrically heated rear window with auto-shutoff based on time, driving speed and outside temperature.	●	●	Heated wood/leather steering wheel.
●	●	Heated windshield.	●	–	Wood/leather shift knob. Leather-trimmed parking brake lever and boot.
●	●	Rain-sensing wipers with heated nozzles, lines and reservoir.	–	●	AMG wood/leather shift knob. Leather-trimmed parking brake lever and boot.
●	●	Rear wiper with washer.	–	●	Illuminated AMG stainless-steel door sill trim.
●	●	Front and rear tow hooks.			

INTERIOR			AUDIO/NAVIGATION/TELEMATICS		
●	●	Power front and rear side-door windows, all with one-touch express-down.	●	●	Cockpit Management and Data (COMAND) system integrates the audio, Hands-Free Communication <sup>39</sup> and Navigation <sup>39</sup> systems, as well as other vehicle settings.
●	●	4-way (tilt/telescoping) power-adjustable steering column position-linked to driver’s seat memory.	●	●	DVD-based Navigation System.
●	●	Programmable easy-exit feature moves driver’s seat back and/or raises steering column.	●	●	AM/FM stereo/weatherband radio with scan and dual-sensitivity seek tuning.
●	●	Electronic cruise control.	●	●	6-disc CD changer mounted in cargo area.
●	●	Auto-dimming rearview mirror.	●	●	SIRIUS Satellite Radio with 6-month subscription.
●	●	Attachable cupholder on center console. Swing-away cupholder adjacent to console.	●	●	harman/kardon® LOGIC7® digital surround-sound system.

CLIMATE CONTROL		
●	●	Dual-zone climate control.
●	●	Electrostatic dust filter.
●	●	Adjustable rear-cabin air vents at rear of front center console.

INSTRUMENTATION			RESTRAINT SYSTEMS		
●	●	Electronic analog speedometer, tachometer and fuel gauge.	●	●	<b>Integrated Restraint System:</b> <ul style="list-style-type: none"><li>Driver and front passenger are each provided with a front air bag (dual-stage for the driver) and a 3-point seat belt with an Emergency Tensioning Device (ETD) and belt force limiter.<sup>17</sup></li><li>2nd-row outboard passengers are each provided with a 3-point seat belt with an ETD.</li><li>2nd-row center passenger is provided with a 3-point seat belt only.</li></ul>
–	●	Silver-accented AMG instrument cluster.	●	●	<b>Window Curtain Air Bags:</b> <ul style="list-style-type: none"><li>In a side impact exceeding a preset deployment threshold, a multichamber air bag deploys along the front and rear side-door windows on the affected side of the vehicle.<sup>17</sup></li></ul>
●	●	Multifunction display in speedometer face, scrolled via steering-wheel controls to operate and display various menus and vehicle features: <ul style="list-style-type: none"><li>Odometer, trip meter and outside temperature indicator.</li><li>Engine coolant temperature, digital speedometer, Maintenance System (see below) and oil-level check.</li><li>All audio features.</li><li>DVD-based Navigation System route guidance.</li><li>Message indicator.</li><li>Programmable settings for instruments and lighting, vehicle and convenience features.</li><li>Trip computer (elapsed time, fuel consumption and distance to empty).</li><li>Telephone menu.</li><li>Mobile phone book (with optional Telephone Integration Kit).</li></ul>	●	●	Occupancy sensor prevents the front passenger’s front air bag from deploying if the seat is unoccupied. An ETD will not deploy if seat belt is unfastened. <sup>17</sup>
●	●	Mercedes-Benz Maintenance System displays distance remaining to next basic maintenance service, indicates type of service due and provides automatic reminder feature.	●	●	Front seats have 4-way adjustable head restraints. Rear-seat head restraints adjust up–down.
●	●	Rear View Camera.	●	●	Universal LATCH (Lower Anchors and Tethers for Children) system at rear outboard seating positions. Selectable seat-belt retractors help secure child seats. <sup>17</sup>
●	●	Advanced Tire Pressure Monitoring System.			

INDIVIDUAL OPTIONS		
●	●	Power tilt/sliding steel sunroof.
●	●	Metallic paint (no-charge option).

●	●	SmartKey remote control integrates: Remote Door Lock/Unlock buttons, removable valet key and panic alarm. Driver may selectively unlock only the driver’s door and fuel filler or all five doors plus the fuel filler.
●	●	Driver-programmable user recognition feature links each SmartKey to the driver’s preferences (up to three individual users per car). Each SmartKey recalls for its assigned driver: memory features for driver’s seat, outside mirrors and power steering column, plus various vehicle settings from the multifunction display.
●	●	SmartKey offers infrared-remote opening/closing of windows and sunroof from outside the vehicle.
●	●	Driver-programmable drive-away locking automatically locks the doors when the vehicle reaches 9 mph.
●	●	Night security illumination uses the vehicle’s exterior lights to help illuminate a path after parking.
●	●	Locator lighting uses the vehicle’s lights to help illuminate a return path when the vehicle is remote-unlocked in darkness. Unlocking vehicle activates illuminated entry system.
●	●	Integrated 3-button garage door control, compatible with HomeLink® components and some other systems.
●	●	Antitheft alarm with remote panic feature.



SERVICE AND SUPPORT

**Tele Aid<sup>40</sup>**  
Three buttons put a multitude of services at system subscribers’ fingertips: emergency response (SOS button), roadside assistance (Wrench button) and even concierge services (*i*-button).<sup>48</sup>

**Tele Aid Security & Care service**  
Enhance your sense of security with Remote Door Unlock, Stolen Vehicle Recovery and much more. Keep your annual subscription up-to-date for the peace of mind that comes from knowing you and yours have an added measure of security and care. With an active Tele Aid subscription, you may be eligible for a discount from your insurance provider.

**Tele Aid Luxury & Convenience Package**  
Here, expand your privileges with access to a Personal Concierge that fulfills your requests for nearly “anything, anytime, anywhere” and an Online Concierge for accessing your Personal Concierge via your computer or PDA wherever Internet access is available, as well as Traffic Information<sup>49</sup> and Route Assistance.

**24-hour Roadside Assistance**  
The first of its kind and still the only one that remains in effect for the life of the vehicle. Our Roadside Assistance technicians draw on years of experience and training to get you back on the road as quickly as possible.<sup>50</sup>

**Mercedes-Benz Limited Warranties**  
Our New Vehicle Limited Warranty runs for 48 months or 50,000 miles, whichever comes first. And anytime during the new vehicle warranty coverage, you can also purchase a Mercedes-Benz Extended Limited Warranty that will provide additional protection when the New Vehicle Limited Warranty expires.<sup>51</sup>

**Mercedes-Benz Maintenance System**  
Enjoy fixed, predictable service intervals every 13,000 miles or one year (10,000 miles or one year for AMG models).<sup>52</sup> About a month before service is due, your vehicle even reminds you via a dashboard display that also explains which maintenance service is due.

**No-charge Service Welcome**  
Stop by your Mercedes-Benz Center’s Service Department for a no-charge first visit between 1,000 and 3,000 miles, where your dealer will perform a diagnostic check and address your questions. Your dealer will also provide the first tire rotation at no additional charge anytime before 6,500 miles.<sup>53</sup>

**24-hour Customer Service**  
Our Customer Assistance Center is your one-stop source for answers. Whether you need to know how to use your audio system, find the nearest Mercedes-Benz dealer, get pricing or learn about personal and automotive accessories, just call 1-800-FOR-MERCEDES or press the Tele Aid *i*-button in your vehicle.

**Sign and Drive service**  
Our legendary Roadside Assistance service includes bringing you some fuel if you’ve run out, replacing a flat tire with your spare or jump-starting your car if the battery dies. All at no charge, and all for as long as you’re driving a Mercedes-Benz—even somebody else’s.<sup>54</sup> Help is as close as your vehicle’s Wrench button (for Tele Aid subscribers) or just a phone call away at 1-800-FOR-MERCEDES.

**Trip Interruption benefits**  
In the unlikely event that a breakdown covered by your MBUSA New Vehicle Limited Warranty occurs more than 100 miles from your home, leaves your Mercedes-Benz inoperable or unsafe to drive and requires overnight repairs at a Mercedes-Benz Center, you’ll be reimbursed up to \$300 per day for any documented expenses—for up to three days—including meals, lodging and substitute transportation.

**Dealer Alternate Transportation Program**  
Whenever you bring your vehicle into an official Mercedes-Benz Center for servicing during the warranty period, ask about your dealer’s Alternate Transportation Program—so you can maintain your busy schedule while your dealer maintains your vehicle.<sup>55</sup>

**Mercedes-Benz Financial**  
Mercedes-Benz Financial offers a wide and impressive array of flexible and convenient financing options. To determine whether purchasing or leasing is right for you and to estimate the monthly payment of your next Mercedes-Benz, visit MercedesBenzFinancial.com.

**To learn more about these and many other services—including dealer locations and financing options—visit us at MBUSA.com today.**

ENDNOTES

- 1 G 500 and G 55 AMG utilize a body-on-frame construction.
- 2 No system, regardless of how advanced, can overcome the laws of physics or correct careless driving. Please always wear your seat belt. Performance is limited by available traction, which snow, ice and other conditions can affect. Always drive carefully, consistent with conditions. Best performance in snow is obtained with winter tires.
- 3 Not available G 500 and G 55 AMG.
- 4 With optional trailer hitch. Read Operator’s Manual before towing. In some states, aftermarket trailer brakes are required. See dealer for details.
- 5 Unsecured cargo can become hazardous in a collision. Always secure cargo using floor-mounted tie-downs.
- 6 Does not meet emissions requirements for California, Connecticut, Maine, Massachusetts, New York, Pennsylvania, Rhode Island or Vermont, and is not available in these states.
- 7 Lower aspect ratio tires and accompanying wheels provide substantially increased treadwear, increased tire noise and reduced ride comfort. Serious wheel and tire damage may occur if the vehicle is operated on rough or damaged road surfaces or upon encountering road debris or obstacles. These tires are not designed for use on snow and ice. Winter tires mounted on appropriately sized and approved wheels are recommended for driving in those conditions.
- 8 Stated rates of acceleration are based upon manufacturer’s track results and may vary depending on model, environmental and road surface conditions, driving style, elevation and vehicle load.
- 9 Maximum low-speed fording depth. Driving too quickly through water that is deeper than the specified limit can result in severe engine damage.
- 10 Not all wheels and tires are approved for off-road usage. See dealer for details.
- 11 Off-road driving should only be attempted by drivers with the necessary off-road driving skill, off-road driving experience and understanding of the vehicle’s limits.
- 12 Six-passenger seating standard. Seven-passenger seating optional.
- 13 SIRIUS® and the SIRIUS dog logo are registered trademarks of SIRIUS Satellite Radio Inc. All Rights Reserved. For full Terms & Conditions, visit sirius.com. Pricing and programming are subject to change. Not available in Alaska, Hawaii or Puerto Rico. While the SIRIUS network of satellites and terrestrial antennae provides nearly seamless service throughout the contiguous U.S., SIRIUS service may be unavailable or interrupted for a variety of reasons, including environmental or topographic conditions; in certain locations such as tunnels, parking garages, or within or next to large buildings; or near other technologies that can interfere with the SIRIUS signal. Six-month service subscription included with purchase.
- 14 Braking effectiveness also depends on proper brake system maintenance, and tire and road conditions.
- 15 Accessory tubular steel grille guard not available on AMG models or vehicles with AMG bodystyling. Not available with optional Parktronic system. Consumers are advised to confirm in advance with the motor vehicle authority in the state in which their M, GL or G-Class is registered whether the grille guard bars comply with license-plate mounting and visibility requirements.
- 16 Requires the use of ultra-low-sulfur diesel fuel. Mercedes-Benz approves the use of B5 bio diesel (approved diesel fuel with a maximum 5% bio diesel content) in all CDI engines. The only approved bio diesel content is one that both meets ASTM D6751 specifications and has the oxidation stability necessary to prevent deposit-/corrosion-related damages to the system (min. 6h, proven by EN 14112 method). Please see your service station for further information. If the B5 bio diesel blend does not clearly indicate that it meets the above standards, please do not use it. The Mercedes-Benz limited warranty does not cover damage caused by non-Mercedes-Benz-approved fuel standards.
- 17 WARNING: THE FORCES OF A DEPLOYING AIR BAG CAN CAUSE SERIOUS OR FATAL INJURIES TO A CHILD UNDER AGE 13. THE SAFEST SEATING POSITION FOR YOUR CHILD IS IN THE REAR SEAT, BELTED INTO AN APPROPRIATE, PROPERLY INSTALLED CHILD SEAT, OR CORRECTLY WEARING A SEAT BELT IF TOO LARGE FOR A CHILD SEAT. SEE OPERATOR’S MANUAL FOR ADDITIONAL WARNINGS AND INFORMATION ON AIR BAGS, SEAT BELTS AND CHILD SEATS.
- 18 Front and rear outboard seats only. Front-seat belt force limiters are adaptive. Rear-seat belt force limiters not available G 500 and G 55 AMG.
- 19 Delayed availability. See dealer for details.
- 20 DISTRONIC Adaptive Cruise Control is no substitute for active driving involvement. It does not react to stationary objects, nor recognize or predict the curvature and lane layout of the road or the movement of vehicles ahead, and can only apply a maximum of 20% of vehicle braking power. It is the driver’s responsibility at all times to be attentive to traffic and road conditions, and to provide the steering, braking and other driving inputs necessary to retain control of the vehicle.
- 21 Drivers are cautioned not to wait for the DISTRONIC Proximity Warning System before braking, as that may not afford sufficient time and distance to brake safely.
- 22 Parktronic system standard G 500 and G 55 AMG (rear bumper only).
- 23 Read Operator’s Manual before towing. In some states, aftermarket trailer brakes are required. See dealer for details.
- 24 Rear View Camera does not audibly notify driver of nearby objects and is not a substitute for actively checking around the vehicle for any obstacles or people. Images displayed may be limited to camera field of view, weather, lighting conditions and the presence of dirt, ice or snow on the camera. See dealer for details.
- 25 Multicontour driver’s seat only on G 500 and G 55 AMG.
- 26 Accessory Rear-Seat Entertainment System prevents access to the auxiliary port for other uses and cannot be combined with accessory iPod® Integration Kit. Mercedes-Benz recommends that children be supervised while using the system. Not compatible with accessory wireless headphones.
- 27 Accessory Rear-Seat Entertainment System and accessory iPod Integration Kit prevent access to the auxiliary port for other uses.

- 28 Always plug the phone into the cradle for use inside the vehicle or use the Bluetooth® interface. Otherwise operating a non-approved phone or radio transmitter with its own attached or built-in antenna while the engine is running can interfere with the vehicle’s electronic systems. For safety reasons, the driver should not use a mobile phone while the vehicle is in motion. We encourage the driver to stop the vehicle in a safe location before answering or placing a call. See your Mercedes-Benz dealer or visit www.Wireless4MB.com for current handset availability. Not all approved phones support all system features. See dealer for details.
- 29 While the Navigation System provides directional assistance, the driver must remain focused on safe driving behavior, including paying attention to traffic and street signs. The driver should utilize the system’s audio cues while driving and should only consult the map or visual displays once the vehicle has been stopped in a safe place. Maps do not cover all areas nor all routes within an area.
- 30 DVD-based maps do not cover all areas nor all routes within an area. One U.S./Canada DVD is included with vehicle.
- 31 SIRIUS® and the SIRIUS dog logo are registered trademarks of SIRIUS Satellite Radio Inc. NFL® is a registered trademark of the National Football League. NASCAR® is a registered trademark of the National Association for Stock Car Auto Racing, Inc. NHL® is a registered trademark of the National Hockey League. NBA® is a registered trademark of NBA Properties, Inc. All Rights Reserved. For full Terms & Conditions, visit sirius.com. Pricing and programming are subject to change. Not available in Alaska, Hawaii or Puerto Rico. While the SIRIUS network of satellites and terrestrial antennae provides nearly seamless service throughout the contiguous U.S., SIRIUS service may be unavailable or interrupted for a variety of reasons, including environmental or topographic conditions; in certain locations such as tunnels, parking garages, or within or next to large buildings; or near other technologies that can interfere with the SIRIUS signal. Six-month service subscription included with purchase.
- 32 Only available in optional leather.
- 33 Accessory grille guard not for use with vehicles that are equipped with the Parktronic system.
- 34 Interface and phone sold separately. See dealer for a list of approved compatible phones.
- 35 BLUETOOTH INTERFACE DOES NOT PROVIDE PHONE CHARGING OR EXTERNAL ANTENNA. PHONE BOOK DOWNLOAD AND VOICE INTERACTIVITY FEATURES ARE DEPENDENT ON SELECTED HANDSET. VISIT WWW.WIRELESS4MB.COM FOR DETAILS.
- 36 iPod is a registered trademark of Apple Computer, Inc. All iPod devices are sold separately. Accessory iPod Integration Kit prevents access to the auxiliary port for other uses and cannot be combined with accessory Rear-Seat Entertainment System. Feature not compatible with iPod Shuffle. See dealer for details.
- 37 Dimensions shown are for models with standard equipment and sunroof.
- 38 Optional or part of an Option Package. See optional equipment listing on page 68.
- 39 When equipped with this feature.
- 40 Tele Aid equipment is standard on all GL and G-Class models as well as all ML 550 and R 63 AMG vehicles and optional on all ML 320 CDI, ML 350, R 320 CDI, R 350 2WD and R 350 vehicles. When equipped with Tele Aid, first year’s Tele Aid Security & Care service provided at no additional cost with subscription. Subscription and acquaintance call required for service to be active. Service operates only where cellular and GPS coverage are available and requires adequate power supply. Owner must authorize vehicle tracking by providing passcode and a valid stolen vehicle police report number. PIN code required to activate Remote Door Unlock. See dealer for details of telematics services.
- 41 OCCUPANT CLASSIFICATION SYSTEM (OCS) IS DESIGNED TO TURN THE FRONT PASSENGER’S FRONT AIR BAG OFF WHEN THE SYSTEM SENSES THE WEIGHT OF A TYPICAL CHILD 12 MONTHS OLD OR LESS PLUS THE WEIGHT OF A STANDARD APPROPRIATE CHILD RESTRAINT. SEE OPERATOR’S MANUAL FOR IMPORTANT ADDITIONAL INFORMATION ON THIS SYSTEM AND FOR FURTHER INFORMATION REGARDING THE TRANSPORTATION OF CHILDREN HEAVIER THAN A TYPICAL 12-MONTH-OLD.
- 42 Not available or only available in combination with other options/Option Packages. See dealer for details.
- 43 IR glass replaces all other glass types.
- 44 Optional or part of an Option Package. See optional equipment listing on page 71.
- 45 No-cost option on GL 550. Replaces standard wood/leather steering wheel.
- 46 Glass sunroof can be substituted.
- 47 Optional or part of an Option Package. See optional equipment listing on page 75.
- 48 Concierge Service available only with Tele Aid Luxury & Convenience Package. Traffic Information and Route Assistance use is included as part of the Tele Aid Luxury & Convenience Package and is available at an additional per-use charge when used with the Tele Aid Security & Care service. See dealer for details.
- 49 Performance of the automated voice system varies depending on the noise level in and around the vehicle. Traffic Information is based on available broadcast data, not available in all areas and only provided for routes that have been personalized on the Tele Aid website (up to five routes) or are within a specified radius of your vehicle’s present location. See Tele Aid section of MBUSA.com for available cities.
- 50 Vehicle must be accessible from main roads. Roadside Assistance repairs may involve charges for parts, service and towing. Depending on the circumstances, these services may be provided by an outside service, courtesy of Mercedes-Benz Roadside Assistance. For full details of the Roadside Assistance Program, please see your dealer.
- 51 Please see your dealer for warranty details as well as for terms, conditions and pricing for extended warranty options. Surcharges for extended warranties apply after the first year.
- 52 Whichever comes first. Requires use of 229.5-spec oil and high-performance fleece oil filter. Driver is responsible for monitoring fluid levels and tire pressure between service visits. See Maintenance Booklet for details.
- 53 On models with different-sized front and rear tires, which cannot be rotated, dealer will inspect tires and set inflation pressure. Follow tire manufacturer’s recommendations.
- 54 For full details of Sign and Drive service, as well as the Roadside Assistance Program, please see your dealer.
- 55 Certain restrictions may apply. Terms, conditions and dealer participation may vary.





Mercedes-Benz

Front cover, from left to right: R 350 shown in optional Iridium Silver metallic paint with optional Lighting Package. ML 550 shown in optional Iridium Silver metallic paint. GL 550 shown in Iridium Silver metallic paint. G 500 shown in Iridium Silver metallic paint.

©2007 Mercedes-Benz USA, LLC • One Mercedes Drive, Montvale, NJ 07645 • 1-800-FOR-MERCEDES • MBUSA.com

Marketing Communications. All illustrations and specifications contained in this brochure are based on the latest product information available at the time of publication. Mercedes-Benz reserves the right to make changes at any time, without notice, to colors, materials, equipment, specifications and models. Any variations in colors shown are due to reproduction variations of the printing process. Illustrations may include test situations. Some vehicles may be shown with non-U.S. equipment. Some vehicles are shown with optional equipment. HomeLink® is a registered trademark of Prince, a Johnson Controls Company. harman/kardon® and LOGIC7® are registered trademarks of Harman International Industries, Inc. iPod is a registered trademark of Apple Computer, Inc.

♻️ In an effort to minimize the environmental impact of this brochure, Mercedes-Benz uses a recycled coated paper that is guaranteed in writing to contain a minimum of 10% post-consumer waste.

Printed in U.S.A./500 MC-07-781