



2013

*GL-CLASS*



Mercedes-Benz



---

*IT UPHOLDS EVEN MORE THAN IT HOLDS.*

---





When the inventor of the first automobile—along with the first truck and first 4-wheel drive vehicle—created its first full-size SUV, a lot of family traditions came into play. Not just the adventurous spirit, gratifying comfort and protective nature that have long defined Mercedes-Benz—but also the same qualities you cherish in your own family. With advanced safety, refined luxury and inspiring performance, the original GL-Class extended its hereditary traits to more passengers than ever. It also brought its virtues to more drivers, becoming the best-selling full-size luxury SUV. For 2013, a new generation of GL-Class is born. Once again, it upholds every tradition its family started. And holds some new ones even higher.

*Learn more at [MBUSA.com/GL](http://MBUSA.com/GL)*



GL550 shown at left with Steel Grey metallic paint and optional Panorama roof. GL450 shown above with optional Lunar Blue metallic paint, illuminated running boards, KEYLESS-GO and PARKTRONIC.



# 3 ROWS OF LUXURY. 7 SEATS AT THE FOREFRONT.

---

Even in the spacious third row of a 2013 GL-Class, your family travels on the leading edge of innovation, and in the lap of luxury. From the efficient GL 350 BlueTEC to the lavish GL 550, every GL-Class shares a rich legacy of leadership in safety, performance and comfort—and shares none of its body or soul with a pickup truck. So while it's roomy in every row, its also refined on any road, thanks in part to its 4-wheel air suspension. And its big muscles are matched by sharp wits. Each of its engine choices delivers over 400 lb-ft of peak torque via nimble, confident 4MATIC all-wheel drive. Its robust uni-body is aerodynamically honed to save fuel, hush the wind, and even help keep its windows cleaner. And its safety systems are so far advanced, the GL can sense a potential collision, warn you, and then help you brake to avoid it. You can size up any SUV by seeing how much will fit behind you. You can measure the GL-Class by how far it puts you ahead.

**GL 350 BlueTEC.** One of the most fuel-efficient and torque-rich 7-passenger SUVs on the road, the clean diesel GL 350 BlueTEC<sup>1</sup> combines ample towing capacity with an admirable 24-mpg highway rating that can take you more than 600 miles between fuel stops.<sup>2</sup> And with standard 19" wheels, 4MATIC™ all-wheel drive, self-leveling AIRMATIC suspension and a paddle-shifted 7-speed automatic transmission, it's a joy to drive across town, around corners, or through any season.

**GL 450.** With a new 4.6-liter Direct Injection biturbo V-8, the 362-hp GL 450 makes more power and torque from less gasoline, with fewer emissions. It also reaches 60 mph quicker than ever, in just 6.2 seconds.<sup>3</sup> Its beefy 19" wheels, 4MATIC all-wheel drive, and a paddle-shifted 7-speed automatic team up with its new engine to inspire commanding confidence in any climate.

**GL 550.** The new 429-hp Direct Injection biturbo V-8 in the GL 550 outputs more massive torque than ever, with an even more impressive boost in fuel-efficiency. Riding on standard 21" AMG wheels and an adaptive air suspension, the GL 550 supersedes virtually every measure of SUV performance. With a 5.5-second 0-60 time, it can out-accelerate some sports cars.<sup>3</sup> And with its abundance of standard equipment, its sumptuous, spacious cabin outpaces many luxury sedans.

GL 450 shown with optional Cinnabar Red metallic paint, KEYLESS-GO, PARKTRONIC, and Appearance and Lighting Packages. Please see endnotes at back of brochure.













# ALL IN

Wherever you venture in the all-new GL-Class, it goes to great lengths to make sure everyone onboard enjoys their stay. Every surface of the finely finished cabin reflects a tradition of craftsmanship that's been handed down for generations. Each of its many innovations in comfort, convenience and connectivity reveals not just ingenious thinking but genuine thoughtfulness. And unlike many other 7-passenger SUVs, all three rows of seating are easy to reach and offer ample room to stretch out. The 2nd-row seats recline to 10 positions. And even the roomy third row feels like first class, thanks to a standard EASY-ENTRY® feature at both rear doors. Whether it's your everyday after-school round-up or the annual summer road trip, the GL-Class goes all out to welcome everybody in. From roominess to refinement, it simply doesn't do anything halfway.

**Immense.** Luxury occurs on a grand scale in the GL-Class cabin. Stretch-out room is plentiful from the heated power front seats to the power-folding 50/50-split third row. The four side doors open wide to ease your entry and exit, and offer a new soft-close option. The 60/40-split 2nd-row seats recline for added comfort on long trips. An EASY-ENTRY feature quickly flips and folds each side out of the way, for convenient access to the third row from either rear door. And with countless folding configurations, there's up to 93.8 cu ft of cargo room with all the rear seats down.<sup>4</sup> Even with all seven seats in use, the luggage space rivals the trunk of an S-Class sedan.

**Immersive.** On any journey, many thoughtful amenities let you bask in soothing comfort. Standard dual-zone climate control constantly monitors humidity, and filters dust, pollen and odors from the cabin air. An optional 3-zone system<sup>5</sup> adds rear-cabin air conditioning with its own controls. By night, available multicolor ambient lighting casts a glow from beneath the hand-finished wood trim in the dash and doors—a delightful meeting of modern fiber optics and old-world craftsmanship. And day or night, the optional Panorama roof lets the passengers take in the sky through a giant span of heat-rejecting tinted glass. The power front section tilts up or slides, while a power screen can shade the first and second rows.

GL 550 shown at left with Almond Beige leather, Burl Walnut wood trim, and optional Driver Assistance and On/Off-Road Packages. GL 550 shown above right with optional *designo* Porcelain leather upholstery and Panorama roof. Please see endnotes at back of brochure.





# *PLAYS TOGETHER. STAYS TOGETHER.*

---

Are we there yet? With most full-size SUVs, that's not just what you hear from the back row—it's what you often ask yourself as you merge into traffic or round a tight corner. The GL-Class answers your driving demands with enthusiasm and composure. That's because its advanced performance systems continually join forces to keep it all together. Turbocharged Direct Injection engines unite responsive power output with responsible fuel intake. Nimble 4MATIC® all-wheel drive integrates our pioneering 4-wheel Electronic Traction System (4-ETS®) for reassuring control, from deep snow to dry corners. Height-adjustable, self-leveling AIRMATIC® suspension soaks up heaving roads and heavy loads. Trailer Stability Assist helps you tow up to 7,500 lbs<sup>6</sup> with unwavering confidence. New Crosswind Stabilization and the optional ACTIVE CURVE SYSTEM each work wonders to keep handling on an even keel. And at the twist of a knob, a new On/Off-Road Package offers six modes for the suspension and drivetrain—from trailering to trailblazing to traversing a winding road. When it comes to your driving enjoyment, most large SUVs seem to tell their drivers “don't even ask.” The GL-Class says “I was hoping you would.”



GL550 shown with Steel Grey metallic paint and optional trailer hitch. Please see endnotes at back of brochure.



**Advanced.** A trio of innovative Direct Injection engines offer vigorous acceleration without a voracious appetite. Two gasoline biturbo V-8s can fine-tune their fuel and spark in a millisecond, for a torrent of torque with a trickle of emissions. The 362-hp version in the GL 450 generates over 400 lb-ft of torque from just 1,500 rpm. The 429-hp powerhouse in the GL 550 reaches 516 lb-ft at 1,800 rpm. The remarkable GL 350 BlueTEC features a clean diesel turbo V-6<sup>1</sup> that puts out a massive 455 lb-ft of torque at just 1,600 rpm. BlueTEC, perhaps the world's most advanced diesel technology, converts its nitrogen oxide emissions into the earth-friendly elements of nitrogen and oxygen. The result of all this math and science is simple: instant response in most any situation, with refreshing long-term benefits.

**Adaptive.** Engineered for smoother, more efficient performance, the driver-adaptive 7-speed automatic transmission keeps pace with your current driving style. An electronic selector and sporty shift paddles put easy control of gear changes at your fingertips, without taking your hand from the steering wheel.

**Athletic.** The generous size and gripping performance of twin 5-spoke wheels come in three sizes and styles. The GL 350 BlueTEC and GL 450 feature standard 19" wheels, with an even sportier 20" design optional. The GL 550 is poised on immensely appealing 21" AMG wheels.

**Adept.** In any weather, 4MATIC all-wheel drive helps turn grip into go. Its 4-wheel Electronic Traction System (4-ETS) continually redistributes torque to the wheels with the best grip—even if that's a single wheel.<sup>7</sup> With a permanent 50:50 front/rear torque split, handling is quick and crisp on dry roads, too.

**Active.** For remarkably flat cornering, the optional ACTIVE CURVE SYSTEM employs variable stabilizers that instantly tighten up in corners, yet help maintain a relaxing ride in less demanding conditions. An Adaptive Damping System (ADS) is included,<sup>5</sup> with electronically controlled shock absorbers that adjust to every move of each wheel, and offer the driver a choice of Sport and Comfort modes on demand.

**Adventurous.** A new On/Off-Road Package adds a 2-speed transfer case, a front underride skid plate and Adaptive Damping System.<sup>5</sup> A rotary selector on the console offers six driving programs that adapt the throttle response, shift patterns, suspension settings and differential locking for the conditions. Program choices include Auto, Sport, Snow, Trailer, and two Off-road modes that increase the ride height and fording depth by offering up to 12 inches of ground clearance.<sup>8</sup>







---

## *CLASS-LEADING SAFETY. IT RUNS IN THE FAMILY.*

---

Look at the list of the safety features in most any SUV today, and you'll be looking into the history of Mercedes-Benz. That's because our engineers have been leading the way in safety for more than 60 years, about the time they invented the first crumple zone. In the 1970s, they earned a patent for the air bag. In the decades to follow, they pioneered a portfolio of safety breakthroughs that went on to become industry standards—like the Antilock Braking System (ABS), Electronic Stability Program (ESP®) and emergency-sensing Brake Assist (BAS®). They were also first to bring side curtain air bags and the 4-wheel Electronic Traction System (4-ETS) to the world of SUVs. So when you examine the new 2013 GL-Class, you'll see more than a list of now-familiar safety features. You'll discover advancements that predict tomorrow's SUVs, while helping to protect your own tomorrow—and your family's—starting today. The new COLLISION PREVENTION ASSIST uses radar technology to warn the driver of a potential impact, and precisely adapted braking assist to help avoid it. PRE-SAFE® can help to prepare front-seat occupants and their restraint systems before a collision happens. ATTENTION ASSIST can sense if the driver gets drowsy. As you travel on a rainy highway, the brakes intelligently act to disperse water buildup. And should any of the nine air bags be activated, the standard mbrace® system can automatically place a call for help.<sup>9</sup> But every GL-Class is more than a list of features—it's an orchestrated safety system, engineered to make the most of the precious milliseconds it takes to avoid, or survive, a collision. "Safety first" is more than a motto to Mercedes-Benz engineers. It's a long-held family value.

GL450 shown with Black paint and optional illuminated running boards, KEYLESS-GO and PARKTRONIC. Please see endnotes at back of brochure.





## REVEAL

**Brilliant lighting.** Bright white LED Daytime Running Lamps help make your presence more apparent to other drivers. LED taillamps feature three-dimensional fiber optics and LED turn signals. With the available Lighting Package,<sup>5</sup> Bi-Xenon headlamps create light that's perceived more like natural daylight than halogen lamps. They also feature Active Curve Illumination and Adaptive Highbeam Assist. These two advanced systems continuously vary the angle and beam pattern of the headlamps, to maximize the illumination of curves and straightaways, without causing glare for other drivers. The package also includes headlamp washers.

**ATTENTION ASSIST.** By continually monitoring a variety of driving behaviors, this Mercedes-Benz innovation can audibly and visually alert the driver if it detects signs of drowsiness on long trips. More than 70 variables are measured in the first minutes of each drive, to establish a pattern and determine the warning thresholds accordingly.<sup>10</sup>

**Blind Spot and Lane Keeping Assists.** These optional systems<sup>5</sup> can alert you to some unseen vehicles in the adjacent lane,<sup>11</sup> and can warn you of unintended drifting across visible lane markings.<sup>10</sup> Both systems are also available with advanced active technology that can help guide the vehicle back into its own lane if the driver disregards the alerts.

**Rear view camera.** Shift to Reverse, and this standard feature shows a live view of the area behind your GL-Class on the large in-dash screen.<sup>12</sup>

## PREPARE

**PRE-SAFE.** A Mercedes-Benz first, PRE-SAFE can help detect instability during certain vehicle maneuvers that suggest that a collision or rollover is imminent. It can then tighten the front seat belts, and close the 1st- and 2nd-row windows and the sunroof—all in an effort to better prepare the occupants and restraint systems in the moments before a collision.<sup>13</sup>

**Accident avoidance.** Two safety systems pioneered by Mercedes-Benz help you avoid potential collisions. The Electronic Stability Program (ESP) responds to help keep the vehicle on course during extreme maneuvers.<sup>7</sup> Brake Assist can maximize braking pressure if it detects an emergency braking situation, potentially shortening your overall stopping distance.<sup>14</sup>

**Adaptive braking.** The 4-wheel disc brakes incorporate technology to help make driving more reassuring and relaxing in a variety of situations. If the driver lifts off the accelerator quickly, Predictive Brake Priming sets the pads closer to the discs for quicker response. In the rain, Automatic Brake Drying periodically applies the brakes gently, to sweep away water buildup. Hill-Start Assist helps prevent unwanted rollback during uphill starts. And a HOLD feature can help make stop-and-go traffic easier. Downhill Speed Regulation (DSR) can automatically maintain a preset crawl speed down steep inclines, for a more secure descent off-road.<sup>14</sup>

**Towing.** Every GL-Class can tow up to 7,500 lbs when equipped with the optional trailer hitch.<sup>6</sup> Standard Trailer Stability Assist integrates with the sensors for ESP to help detect trailer oscillation when towing.

## REACT

**COLLISION PREVENTION ASSIST.** At speeds above 20 mph, this new system's radar-based technology alerts the driver if they're approaching a vehicle ahead at a speed and distance that suggest a collision is likely. Its Adaptive Brake Assist automatically provides the ideal level of braking as soon as the driver steps on the brake pedal. And if deemed necessary, the system can also activate PRE-SAFE. Along with helping to prevent or reduce the severity of a collision, the system's engagement of the brake lamps can help to alert the drivers behind your GL-Class earlier as well.<sup>15</sup>

**DISTRONIC PLUS.** This optional radar-based cruise control system, yet another Mercedes-Benz innovation, adapts your set speed in response to the flow of traffic ahead—automatically slowing until your path is clear again. If the vehicle ahead slows to a stop, DISTRONIC PLUS can also brake to a full halt, then resume automatically when traffic starts going.<sup>16</sup>

**PRE-SAFE Brake.** Even if you're not using cruise control, DISTRONIC PLUS can help detect an impending collision with a vehicle ahead. Its PRE-SAFE Brake system can alert the driver and automatically apply up to 100% braking force, to help reduce the severity of an impact.<sup>14</sup>

**Nine air bags.** Within the rigid, high-strength steel-reinforced uni-body structure of the 2013 GL-Class, nine air bags offer 13-way protection.<sup>17</sup> A driver's knee air bag further augments the dual-stage front air bags. In addition to four side-impact air bags, side curtain air bags are provided for all three seating rows. And the outboard seat belts in all three rows include Emergency Tensioning Devices (ETDs) and belt-force limiters.





San Francisco/Oakland Metro Area, CA

Monday	Tuesday	Wednesday	Thursday	Friday
Mostly Sunny	Mostly Sunny	Mostly Sunny	Partly Cloudy	Mostly Sunny
65°	62°	56°	54°	56°
50°	50°	46°	46°	48°
10°	5°	25°	10°	10°
Map	Current	Info	Position	



# FAR AHEAD. BUT WITHIN EASY REACH.

## INNOVATION FOR YOU, AND FOR FUTURE GENERATIONS.

The GL-Class cockpit is more than a showcase of what's new in user-friendly technology. It's also a platform for what comes next. The new Mercedes-Benz mbrace2™ system brings the power and reach of the Internet to its stylishly functional dashboard, with an array of useful apps you already enjoy at home.<sup>9</sup> Furthermore, its groundbreaking engineering allows for updates and future apps to be installed over the air. The abundance of features already in place throughout its cabin deliver innovative luxury with intuitive logic. Its multifunction steering wheel, elegant central controller, 7" in-dash screen<sup>18</sup> and colorful 3D instruments put a world of information and entertainment within easy reach and clear view. Standard Bluetooth® lets you make hands-free calls, or stream music wirelessly—just one of up to 10 ways to bring along your audio favorites. The available navigation system<sup>5</sup> responds to your natural speaking voice, reports on the weather, and can automatically re-route you around traffic. There's even an option<sup>5</sup> that sizes up parking spaces as you drive by, then automatically steers you in with expert finesse. Making futuristic innovation feel instantly familiar is a path Mercedes-Benz has always taken. And it keeps you ready for the road ahead.

**Multifunctional.** The COMAND system brings all of your entertainment, navigation and Internet options together via a convenient central controller and vivid 7" in-dash color screen. Controls on the steering wheel make it easy to adjust the audio, use the Bluetooth interface,<sup>9</sup> and thumb through the many informative screens and graphical menus shown in a 4.5" color display within the instrument cluster.

**Multimedia.** Listening choices are virtually limitless in the GL-Class. Standard audio equipment includes an in-dash 6-disc DVD/CD player, HD Radio™ stations, Bluetooth audio streaming, plus an SD card reader, an AUX input and a USB port. The Premium 1 Package<sup>5</sup> adds SiriusXM Radio with 6 months of service,<sup>20</sup> iPod® integration,<sup>21</sup> and a 10GB Music Register for storing your digital music. An available harman/kardon LOGIC7® system plays 830 watts of surround sound through 13 speakers plus a subwoofer. An optional Rear Seat Entertainment system features dual 2nd-row monitors and multiple inputs. It can play movies and games together or independently, via wireless headsets or the audio system.

**Multidimensional.** The Premium 1 Package<sup>5</sup> also brings you a state-of-the-art navigation system<sup>22</sup> with a fast 80GB hard drive, 3D maps with building profiles and lane guidance. Its Enhanced Voice Control can learn how you speak, to let you operate the navigation, audio, and even your phone and iPod with your normal voice. You'll also enjoy SiriusXM Traffic with dynamic re-routing, SiriusXM Weather, and built-in Zagat® Survey ratings for restaurants, hotels and golf courses.<sup>20</sup>

**Multitalented.** With the available KEYLESS-GO,<sup>5</sup> you can unlock, start and re-lock your GL-Class without ever taking the key from your pocket or purse. The standard rear view camera helps to make backing up easier with on-screen active parking guidelines.<sup>12</sup> Optional PARKTRONIC<sup>5</sup> can alert you to nearby obstacles as you negotiate tight spaces. It also includes Active Parking Assist, an innovation that surveys parallel-parking spots as you drive by—sizing them up and letting you know which one's a good fit. Then, as you back into your chosen space, the system handles the steering for you, while you simply control the pedals and gear selector.



GL350 BlueTEC shown with optional Black leather and Burl Walnut wood trim, Active Ventilated front seats, PARKTRONIC, wood/leather steering wheel, and Driver Assistance and Premium 2 Packages. Please see endnotes at back of brochure.





# EXTENDED INVITATION

There might be only one thing more remarkable than how exclusive the luxuries of the GL-Class cabin are: How inclusive they are. With three rows of first-class seating, all seven passengers enjoy class-leading headroom, generous legroom and an abundance of thoughtful details. Every row is treated to beverage holders, power windows and power ports—including a household-style plug in the second row. Precisely top-stitched upholstery—including the supple available leather<sup>5</sup> and exquisite new *designo* Premium leather—is lovingly hand-fitted. Sustainably forested wood trim is polished by hand and liberally applied, from the winglike span across the dash to all four doors and, at your request, the steering wheel.<sup>5</sup> And to further enhance its air of exclusivity, a lavish menu of options<sup>5</sup> includes 3-zone climate control, multicolor ambient lighting and illuminated front door sills. The GL-Class does more than extend an invitation to its accommodating cabin. It goes to great lengths to ensure that you thoroughly enjoy your stay.

**Well-being.** Heated, 8-way power front seats are designed for enduring comfort, further enhanced by the driver's 4-way pneumatic lumbar support. The Premium 1 Package<sup>5</sup> adds lumbar adjustment for the front passenger, plus a 3-position memory for both seats. The package also includes a power steering column and power-folding side mirrors—with their settings stored in the driver-seat memory. Also available<sup>5</sup> are the all-season enjoyment of Active Ventilated front seats, and multicontour front seats that let you precisely tune the lumbar, shoulder and thigh supports. They can also offer you a gentle or invigorating lower-back massage.

**Warming.** For the driver's pleasure, there's the choice of a hand-finished wood/leather steering wheel or a heated steering wheel<sup>5</sup> that can quickly take the chill from your hands on a cool morning.

**Welcoming.** The spacious second row features 60/40-split seats with reclining backrests, three adjustable head restraints and a folding center armrest. Heating of the outboard seats is optional, with automatic shutoff so the driver need not worry if passengers exit without turning them off.

**Whispering.** The quiet luxury of the cabin is the result of the GL's extremely rigid body, extensive insulation and advanced aerodynamics. Noise is further subdued in the GL 550 by dual-pane front door glass. Power windows are provided for every GL seating row, including 3rd-row vent windows. Privacy glass is standard in all the rear windows. The standard power sunroof can be upgraded to a king-size optional Panorama roof. Its power front section, like the standard sunroof, tilts up to offer draft-free ventilation, or slides open for a breeze.













# FULFILLMENT

THE TRUE MEASURE OF A GL-CLASS IS HOW MUCH YOU'LL GET OUT OF IT.

The grand accommodations of the GL-Class are designed so you can enjoy them to the fullest without having to make grand plans beforehand. Mercedes-Benz engineers have fully prepared the versatile cabin to let you be more spontaneous. So you can take along your children's soccer mates, take home a vintage dresser, or take your friends out to dinner whenever you want. The standard EASY-ENTRY® system makes 3rd-row access a graceful step from either of the GL's rear doors. Available brushed aluminum running boards<sup>5</sup> welcome you aboard with sleek new fiber-optic LED illumination and anti-slip rubber dots. With just the touch of a button, each of the twin 3rd-row seats power-folds flat, making way for nearly 50 cu ft of cargo while up to five passengers can ride in comfort. Fold down the 2nd-row seats the cargo area nearly doubles to 94 cu ft of richly carpeted space that's outfitted with an assortment of hooks and hangers. The GL-Class comes pre-filled with good thinking. But it leaves plenty of room for ideas of your own.

**Flexible.** In a matter of seconds, the 60/40-split 2nd-row seats and power 50/50-split 3rd-row seats fold flat to create up to 93.8 cu ft of cargo space.<sup>4</sup> Flexible configurations and generous dimensions offer ample accommodations for the week's groceries or your weekend gear. And it's wide enough to stack two golf bags laying side-to-side behind the third row. A standard remote-control power liftgate eases loading and unloading—especially when it's raining or your arms are full. It also includes a height-limiting feature for low garages. A chrome sill plate stylishly helps protect the rear bumper as you move cargo in and out.

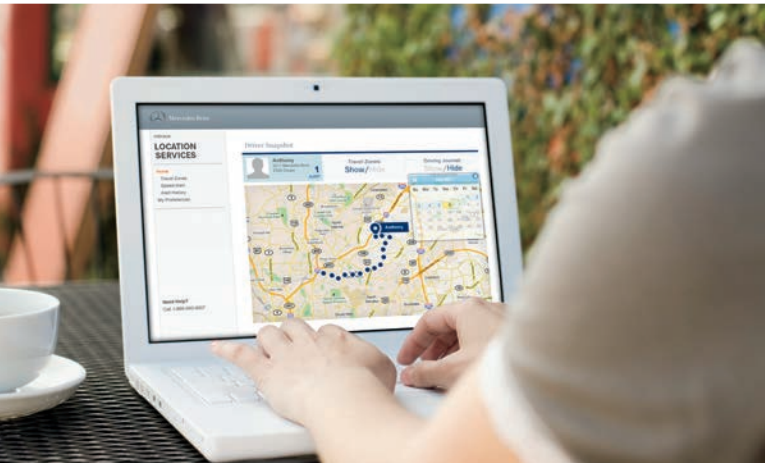
**Fastidious.** Stowing and securing items is easy, with chrome tie-downs in the floor, a fold-out grocery bag hook, and parcel nets in the side walls. A clever recess in the open liftgate offers a place to hang your dry cleaning until you're ready to lay it on top of all your other parcels and packages. And an available lockable compartment<sup>5</sup> provides concealed storage for your laptop or other small valuables under the cargo floor.

**Friendly.** For convenient 3rd-row access from both the left and right rear doors, the standard EASY-ENTRY system flips either of the 2nd-row seats out of the way with a touch of a release that's accessible from the open door or the 3rd-row cabin. Soft-close doors are a luxurious new GL-Class option.<sup>5</sup> Once you bring any of the four side doors to its latch, an assist mechanism quietly snugs the door fully and securely shut.

GL 450 shown at left with optional Grey leather and Burl Walnut wood trim, Rear Seat Entertainment system, and Premium 2 Package. GL 550 shown above right with optional *designo* Porcelain leather upholstery and *designo* Piano Black Lacquer wood trim. Please see endnotes at back of brochure.







# YOUR WORLD, YOUR WAY.

*IT'S MORE THAN YOUR CAR.  
IT'S YOUR LIFE, ON THE GO.*

Where will you go next? Whether you're meeting friends, picking up the kids, or just out and about, Mercedes-Benz mbrace® can make any trip easier, more productive and more enjoyable.<sup>9</sup> The new mbrace2™ connects you and your car with the devices you already rely upon to get around—your smartphone and computer. It also brings the Internet and useful new apps to your car, so you can use familiar services like Google Maps™ and Yelp to start navigating with just a few clicks. Friends can send their location to your car with just a text message. You can lock your car's doors, flash its lights, or find it in a parking lot—all from your smartphone. When your teenager takes the wheel, mbrace2 can deliver peace of mind via your computer. It can bring the assistance of live experts right to your car—from last-minute theater tickets to help in an emergency. And it can all be updated remotely, over the air. So wherever the world goes, mbrace will keep making it yours.



**From your car.** With new Cloud-based apps, mbrace2 brings the Internet into your Mercedes-Benz. Using the available COMAND navigation, you can find friends from their Facebook check-ins, search for restaurants on Yelp, or use Google Maps, Local Search and Street View. Instead of entering an address, you can start navigating with just a few clicks. And three buttons in your car can connect you to emergency services, our 24-hour Customer Assistance Center, our Roadside Assistance, or our mbrace PLUS Concierge.<sup>23</sup>



**From your smartphone.** The mbrace Mobile Application for iPhone® and Android™ phones lets you send addresses directly to your navigation system, locate your car, lock or unlock its doors, flash its lights, or monitor it when you valet-park. With just a touch, you can find a dealer, and contact Roadside Assistance, Concierge services or Mercedes-Benz Financial Services. And Drive2Friend™ lets someone send their location directly to your navigation system, simply by responding to a text message that you send them.<sup>24</sup>



**From your computer.** You can send addresses—or even exact routes—to your car's navigation system in a number of ways: From the Send2Benz™ website. From Google Maps, via Search & Send™ and Route2Benz. And with a browser toolbar widget that lets you highlight any address on your screen and send it with just two clicks. For added peace of mind when your kids use the car, mbrace can alert you if they drive faster, farther or later than you prefer. Your car can even send a monthly Vehicle Health Report on its service needs, right to your email inbox. And you'll find a world of support at the mbrace website, accessible through MBUSA.com/mbrace.



# mbrace2

## *mbrace Package*

6-month trial included

**Advanced features you'll enjoy every day.  
Support you can count on when you need it most.**

### **SAFETY AND SECURITY**

From Roadside Assistance to antitheft measures to emergency aid, mbrace looks after you, your passengers and your Mercedes-Benz.

- ▶ Call for assistance after an accident or in any emergency situation. If an air bag is activated, your Mercedes-Benz can place an SOS call automatically, even if you can't
- ▶ Directly connect with Mercedes-Benz Roadside Assistance for a jump-start, to change a flat tire or other car trouble
- ▶ Get notified if your car's alarm is set off, and let your car's built-in GPS help authorities with stolen vehicle recovery
- ▶ If you ever find yourself unable to drive, let an mbrace specialist help arrange alternate transportation home

### **REMOTE CONNECTIONS TO YOUR VEHICLE**

Interact with your vehicle's features, and send addresses to its available navigation system, from your iPhone, Android or computer.

- ▶ Send destinations and even exact routes to your COMAND navigation system from your computer or smartphone
- ▶ Locate your vehicle from the Mobile App on your phone when you can't remember where you parked
- ▶ Remote-lock and unlock your car's doors
- m2** ▶ Sound your car's horn and flash its lights to help spot it in a crowded lot, or to call attention to a hazardous situation
- m2** ▶ Receive a monthly email health report from your car, so you can check under the hood without opening the garage (available starting late 2012)

## *mbrace PLUS*

3-month trial included

**Personal assistance to make your life easier.  
Helpful ways to look after your loved ones.**

### **PERSONAL CONCIERGE**

Enjoy virtually unlimited assistance from an actual person with the knowledge and resources to help with almost any request.

- ▶ Let an expert Concierge help you stay more productive on the road, or from the Mobile App on your smartphone
- ▶ Get expert recommendations and reservations for dining out, tickets to events, and answers to most any question

### **FAMILY DRIVER MONITORING **m2****

Let mbrace add to your peace of mind when the secondary drivers in your household use the family Mercedes-Benz.

- ▶ Set speed limits and receive reports if they're exceeded
- ▶ Set up virtual boundaries and be alerted if they're crossed
- ▶ Receive an alert if the car is started after curfew (available starting early 2013)
- ▶ See where your vehicle's been driven on an online map

### **ADVANCED TRAVEL ASSISTANCE**

Keep your eyes on the road with agent-assisted route guidance based on where you are, or plan a trip to somewhere far away.

- ▶ Receive spoken assistance in your car with weather and traffic conditions, point of interest information, and turn-by-turn driving directions to your destination
- ▶ Let your Concierge book and change airline, hotel and rental car reservations from your car or the Mobile App

## *Mercedes-Benz Apps*

3-month trial included

**The convenience of the Internet in your car.  
Connections to your friends and favorites.**

### **IN-VEHICLE INTERNET **m2****

Access in-car Internet-based connections to the interests you enjoy, the information you need, and the world you call your own. (Vehicle must be equipped with Premium 1 or Premium 2 Package.)

- ▶ Search restaurant and business reviews with Yelp, and navigate directly to them with just a few clicks
- ▶ Stay connected to friends with Facebook, and navigate directly to places where they've checked in
- ▶ Find and view local points of interest through Google™ Local Search, Street View and Panoramio
- ▶ Keep up-to-date on the latest news from around the world
- ▶ Follow your favorite stocks through Morningstar (available starting late 2012)
- ▶ Enjoy an ever-expanding variety of new apps

**m2** New feature with mbrace2

*For more information and a complete list of  
mbrace services, visit [MBUSA.com/mbrace](http://MBUSA.com/mbrace)*

Please see endnotes at back of brochure.



# MAKE IT YOURS.

Genuine Mercedes-Benz Accessories help you make your SUV the ideal expression of your personal style. A wide selection of accessories allows you to enhance your vehicle's appearance, expand its versatility, or offer it some extra protection in everyday use. From sporty alloy wheels to clever cargo solutions to state-of-the-art multimedia systems, they're all exclusively engineered to fit your SUV as well as they fit your life. It's a great way to make your GL-Class unmistakably yours while keeping it genuinely Mercedes-Benz.

*See the entire accessory selection at [MBUSA.com/GL](http://MBUSA.com/GL)*

**Cargo area tray and cargo box.** Help protect the cargo-area carpeting from spills and dirt with this large tray featuring 2" sides. It's form-fitted from durable, easy-to-clean plastic. Up to two cargo boxes can fit in the tray (all sold individually) to help keep tall objects like grocery bags and bottles upright. Movable dividers in each box help items stay in place.

**Clip-on iPad Docking Station.** A clever way for 2nd-row passengers to enjoy their iPad® of any generation, the Docking Station clips onto the front head restraint posts. Easy to install and remove, the iPad can be tilted and rotated 90° from landscape to portrait orientation. Openings at the side ensure that your iPad's connection points stay accessible.

**In-Vehicle Hotspot.** Passengers can now check their email and browse the web while on the road—and so can the driver when safely parked. The Hotspot can provide Internet connectivity for up to four laptops, tablets or other mobile wireless devices. The fast router is securely installed and not visible from outside the vehicle, while an encrypted password helps ensure limited access to your wireless connection. An initial activation fee and monthly service subscription may be required.

**Chrome hood fins.** A set of six chrome fins easily attaches to the rear hood vents of your GL-Class, adding a distinctive, sporty visual accent.

**Roof rack basic carrier.** An essential component for mounting a wide array of attachments to the top of your GL-Class, the basic carrier is easy to install to the standard roof rails. A variety of bike racks, ski and snowboard racks, and cargo containers are each available separately.

**19" 7-spoke wheels.** With high-shine spokes on a sculpted Himalaya Grey background, these distinctive alloy wheels make a bold statement.

Please see endnotes at back of brochure.





# BUILD YOUR OWN.

MBUSA.com/GL

## OPTION PACKAGES

	GL 350 BlueTEC	GL 450	GL 550
<b>Premium 1 Package</b>	○	○	●
<ul style="list-style-type: none"> <li>• Hard-drive navigation,<sup>22</sup> 10GB Music Register for storing MP3 files</li> <li>• SiriusXM Radio, Traffic and Weather<sup>20</sup> (with 6 months of service)</li> <li>• iPod®/MP3 Media Interface,<sup>21</sup> Gracenote® media database</li> <li>• Enhanced Voice Control for audio, telephone and navigation</li> <li>• 10-way power front seats with 3-position memory</li> <li>• Power tilt/telescoping steering column</li> <li>• Power-folding side mirrors, auto-dimming driver-side and inside rear view mirrors</li> <li>• Illuminated front door sills, multicolor interior ambient lighting</li> </ul>			
<b>Premium 2 Package</b> (includes all items in Premium 1 Package)	○	○	●
<ul style="list-style-type: none"> <li>• harman/kardon LOGIC7® surround sound with Dolby Digital 5.1</li> <li>• Soft-close doors, lockable rear storage compartment</li> <li>• KEYLESS-GO®</li> </ul>			
<b>Lighting Package</b>	○	○	●
<ul style="list-style-type: none"> <li>• Bi-Xenon headlamps with Active Curve Illumination, Adaptive Highbeam Assist and headlamp washing system</li> </ul>			
<b>Appearance Package</b>	—	○	—
<ul style="list-style-type: none"> <li>• Illuminated running boards, chrome exhaust tips</li> <li>• 20" twin 5-spoke wheels</li> </ul>			
<b>On/Off-Road Package</b>	—	○	○
<ul style="list-style-type: none"> <li>• Adaptive Damping System,<sup>5</sup> front underride protection</li> <li>• 2-speed transfer case (with center differential locking in low range)</li> <li>• Six selectable driving programs<sup>8</sup> (suspension and drivetrain settings)</li> </ul>			
<b>Lane Tracking Package</b>	○	○	●
<ul style="list-style-type: none"> <li>• Blind Spot Assist<sup>11</sup> and Lane Keeping Assist<sup>10</sup></li> </ul>			
<b>Driver Assistance Package</b>	○	○	○
<ul style="list-style-type: none"> <li>• DISTRONIC PLUS with PRE-SAFE® Brake<sup>16</sup></li> <li>• Active Blind Spot Assist<sup>11</sup> and Active Lane Keeping Assist<sup>10</sup></li> </ul>			

## SPECIFICATIONS

	GL 350 BlueTEC <sup>1</sup>	GL 450	GL 550
<b>Engine</b>	3.0-liter turbo clean diesel V-6 240 hp @ 3,600 rpm 455 lb-ft net torque @ 1,600-2,400 rpm	4.6-liter biturbo Direct Injection V-8 362 hp @ 5,000-6,000 rpm 406 lb-ft net torque @ 1,500-4,000 rpm	4.6-liter biturbo Direct Injection V-8 429 hp @ 5,250 rpm 516 lb-ft net torque @ 1,800-3,500 rpm
<b>Transmission</b>	7-speed automatic with steering wheel-mounted shift paddles	7-speed automatic with steering wheel-mounted shift paddles	7-speed automatic with steering wheel-mounted shift paddles
<b>Wheels</b>	19" twin 5-spoke	19" twin 5-spoke	21" AMG twin 5-spoke
<b>Suspension</b>	4-wheel independent self-leveling AIRMATIC	4-wheel independent self-leveling AIRMATIC	4-wheel independent self-leveling AIRMATIC with adaptive damping
<b>Drivetrain</b>	4MATIC® all-wheel drive	4MATIC all-wheel drive	4MATIC all-wheel drive

## INDIVIDUAL OPTIONS

	GL 350 BlueTEC	GL 450	GL 550
<b>ACTIVE CURVE SYSTEM</b> (includes Adaptive Damping System <sup>5</sup> )	○	○	○
<b>Panorama roof</b>	○	○	○
<b>Illuminated brushed aluminum running boards with rubber studs</b>	○	○	●
<b>PARKTRONIC with Active Parking Assist</b>	○	○	●
<b>KEYLESS-GO</b>	○	○	●
<b>Class IV trailer hitch<sup>4</sup></b> (7,500-lb towing capacity)	○	○	○
<b>3-zone climate control</b> (with separate rear air conditioning)	○	○	●
<b>Multicontour front seats</b> (with massage feature and comfort-type head restraints)	○	○	●
<b>Active Ventilated front seats</b>	○	○	●
<b>Heated outboard 2nd-row seats</b>	○	○	○
<b>Heated steering wheel<sup>25</sup></b>	○	○	○
<b>Wood/leather steering wheel<sup>25</sup></b>	○	○	●
<b>20" twin 5-spoke wheels</b>	○	—	—
<b>Leather upholstery</b>	○	○	●
<b>designo leather upholstery</b>	○	○	○
<b>Eucalyptus wood trim</b>	●	●	—
<b>Burl Walnut wood trim</b> (included with leather upholstery on GL 350 BlueTEC and GL 450)	○	○	●
<b>Metallic paint</b> (no charge on GL 550)	○	○	○
<b>Rear Seat Entertainment system, or system prewiring</b>	○	○	○

● Standard ○ Optional — Not Available

## DIMENSIONS

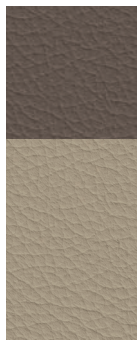
	All models
<b>Wheelbase</b>	121.0"
<b>Overall length</b> (GL 350 BlueTEC / GL 450 / GL 550)	201.6" / 201.6" / 202.6"
<b>Overall height</b> (max. / max. w/On/Off-Road Pkg.)	75.2" / 76.4"
<b>Overall width</b> (w/mirrors)	84.3"
<b>Curb weight</b> (GL 350 BlueTEC / GL 450 / GL 550)	5,467 / 5,401 / 5,578 lbs
<b>Headroom</b> (1st/2nd/3rd row)	41.2" / 40.0" / 38.9"
<b>Legroom</b> (1st/2nd/3rd row)	40.3" / 38.5" / 35.0"
<b>Shoulder room</b> (1st/2nd/3rd row)	58.5" / 58.3" / 50.5"
<b>Cargo capacity</b>	
Behind 3rd row (to top of seats)	16.0 cu ft
Behind 2nd row (3rd row folded, floor to ceiling)	49.4 cu ft
2nd and 3rd rows folded (floor to ceiling)	93.8 cu ft



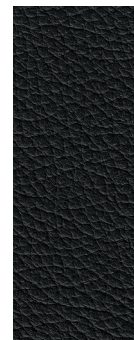


# COLOR AND TRIM.

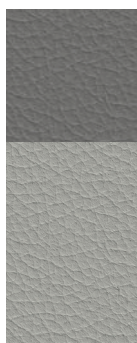
## UPHOLSTERY



Almond Beige



Black



Grey



*INDIVIDUALLY CHOSEN.  
EXQUISITELY CRAFTED.*

*designo* is an exclusive program of leather upholstery and interior trim choices offering an extraordinary degree of handcrafted quality and personalization. Please ask your dealer about the *designo* leather and trim options for the GL-Class, or visit [MBUSA.com/designo](http://MBUSA.com/designo).

## WHEEL CHOICES



19" twin 5-spoke  
(GL 350 BlueTEC and GL 450)



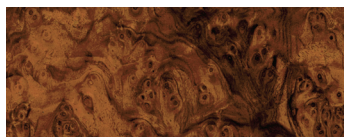
20" twin 5-spoke (optional on  
GL 350 BlueTEC and GL 450)



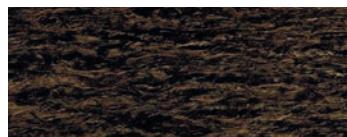
21" AMG twin 5-spoke  
(GL 550)



## HIGH-GLOSS WOOD TRIM



Burl Walnut



Eucalyptus (GL 350 BlueTEC and GL 450)

## NON-METALLIC PAINTWORK



Arctic White

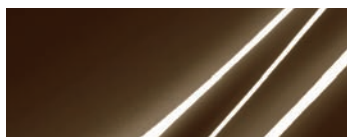


Black

## METALLIC PAINTWORK



Cinnabar Red



Dakota Brown



Diamond White<sup>26</sup>



Iridium Silver



Lunar Blue



Obsidian Black



Pearl Beige



Steel Grey

## ENDNOTES

- Requires the use of Ultra Low Sulfur Diesel (ULSD) fuel with **no more than 5% biodiesel content**. Mercedes-Benz diesel vehicles utilize advanced emission control technology that is designed to comply with current stringent exhaust emissions regulations. Mercedes-Benz approves the use of B5 biodiesel in all BlueTEC engines. Pure biodiesel (B100) and biodiesel blends greater than B5 (e.g., B10, B20) are not factory-approved and can damage the engine, fuel system and exhaust aftertreatment system. The only approved biodiesel content is one that both meets ASTM D6751 specifications and has the oxidation stability necessary to prevent deposit/corrosion-related damages to the system (min. 6th proven by En 14112 method). Please see your service station for further information. If the B5 biodiesel blend does not clearly indicate that it meets the above standards, do not use it. The Mercedes-Benz New Vehicle Limited warranty does not cover damage caused by non Mercedes-Benz approved fuel standards.
- Preliminary 2013 EPA estimated fuel economy. See dealer for final figures. Compare the estimated mpg to the estimated mpg of other vehicles. You may get different mileage depending on how fast you drive, weather conditions and trip length. Your actual highway mileage will probably be less than the highway estimate. Driving range based on fuel tank capacity and highway estimate.
- Stated rates of acceleration are based upon manufacturer's track results and may vary depending on model, environmental and road surface conditions, driving style, elevation and vehicle load.
- Unsecured cargo can become hazardous in a collision. Always secure cargo using the floor-mounted tie-downs.
- Standard on GL 550.
- Read Operator's Manual before towing. In some states, aftermarket trailer brakes are required. See dealer for details.
- No system, regardless of how advanced, can overcome the laws of physics or correct careless driving. Please always wear your seat belt. Performance is limited by available traction, which snow, ice and other conditions can affect. Always drive carefully, consistent with conditions. Best performance in snow is obtained with winter tires.
- Off-road driving should only be attempted by drivers with the necessary skill, experience and understanding of the vehicle's limits. Read Operator's Manual before driving off-road or in deep water. Driving in water of unknown depth is not recommended.
- All Mercedes-Benz mbrace® services operate only where cellular and Global Positioning Satellite signals are available, which are provided by third parties and not within the control of Mercedes-Benz USA, LLC. An mbrace Package trial period is offered on new, Certified Pre-Owned and pre-owned sales and leases at an authorized Mercedes-Benz dealer. Subscriber Agreement is required for service to be active. Some services are only available on select vehicles. Your PIN is required in order to use certain services. Some services may be limited or restricted in some areas. Driver is responsible for complying with traffic and other laws. See your dealer or MBUSA.com/mbrace for details, including a list of compatible smartphones.
- Driving while drowsy or distracted is dangerous and must be avoided. ATTENTION ASSIST and/or Lane Keeping Assist may be insufficient to alert a fatigued or distracted driver of lane drift and cannot be relied on to avoid an accident or serious injury. Lane Keeping Assist operates at speeds above approximately 20 mph.
- Blind Spot Assist may not be sufficient to avoid all accidents involving vehicles in your blind spot and does not estimate the speed of approaching vehicles. It must not be used as a sole substitute for driver awareness and checking of surrounding traffic conditions. Blind Spot Assist operates at speeds above approximately 20 mph.
- Rear view camera does not audibly notify driver of nearby objects and is not a substitute for actively checking around the vehicle for any obstacles or people. Images displayed may be limited by camera field of view, weather, lighting conditions and the presence of dirt, ice or snow on the camera.
- PRE-SAFE® closes the side windows and sunroof when the system's sensors detect side movement that suggests a possible rollover.
- Braking effectiveness also depends on proper brake maintenance, and tire and road conditions.
- COLLISION PREVENTION ASSIST may not be sufficient to avoid an accident. It does not react to certain stationary objects, nor recognize or predict the curvature and/or lane layout of the road or every movement of vehicles ahead. It is the driver's responsibility at all times to be attentive to traffic and road conditions, and to provide the steering, braking and other driving inputs necessary to retain control of the vehicle. Drivers are cautioned not to wait for the system's alerts before braking, as that may not afford sufficient time and distance to brake safely.
- DISTRONIC PLUS adaptive cruise control is no substitute for active driving involvement. It does not react to stationary objects, nor recognize or predict the curvature and lane layout of the road or the movement of vehicles ahead. It is the driver's responsibility at all times to be attentive to traffic and road conditions, and to provide the steering, braking and other driving inputs necessary to retain control of the vehicle. Drivers are cautioned not to wait for the DISTRONIC Proximity Warning System before braking, as that may not afford sufficient time and distance to brake safely. After braking the car for stopped traffic ahead, system resumes automatically only if traffic pauses for less than 3 seconds.
- WARNING: THE FORCES OF A DEPLOYING AIR BAG CAN CAUSE SERIOUS OR FATAL INJURIES TO A CHILD UNDER AGE 13. THE SAFEST SEATING POSITION FOR YOUR CHILD IS IN THE REAR SEAT, BELTED INTO AN APPROPRIATE, PROPERLY INSTALLED CHILD SEAT, OR CORRECTLY WEARING A SEAT BELT IF TOO LARGE FOR A CHILD SEAT. SEE OPERATOR'S MANUAL FOR ADDITIONAL WARNINGS AND INFORMATION ON AIR BAGS, SEAT BELTS AND CHILD SEATS.
- Display appearance may vary from system shown. See dealer for additional information.
- Bluetooth® interface does not provide phone charging or external antenna. Voice interactivity feature is dependent on selected handset. Visit MBUSA-Mobile.com for details. Phone sold separately. See dealer for a list of approved compatible phones.
- The purchase of a new, satellite radio-enabled vehicle includes 6 months of service for SiriusXM Radio, SiriusXM Traffic and SiriusXM Weather. SiriusXM Traffic and Weather services are available in select markets. If you decide to continue your SiriusXM service at the end of this period, all SiriusXM services are sold separately, and the plan you choose will automatically renew and bill at then-current rates until you call 1-866-635-2349 to cancel. See SiriusXM Customer Agreement for complete terms, www.siriusxm.com. Sirius U.S. Satellite service available only to those at least 18 years of age in the 48 contiguous United States, DC and Puerto Rico (with coverage limitations).
- All iPod® devices are sold separately. Feature not compatible with iPod Shuffle. See dealer for details.
- While the navigation system provides directional assistance, the driver must remain focused on safe driving behavior, including paying attention to traffic and street signs. The driver should utilize the system's audio cues while driving and should only consult the map or visual displays once the vehicle has been stopped in a safe place. Maps do not cover all areas or all routes within an area.
- Roadside Assistance repairs may involve charges for parts, service and towing. Vehicle must be accessible from main roads. Depending on the circumstance, these services may be provided by an outside provider, courtesy of Mercedes-Benz Roadside Assistance. Restricted roadways, acts of nature and vehicle accessibility may limit our ability to provide services to you. For full details, eligibility requirements, and limitations/exclusions of Sign and Drive services, as well as the Roadside Assistance Program, please see your dealer.
- mbrace is compatible with Apple iPhone® models running iOS 4.2 or later, and Android-based phones running OS 2.1 or later. Please visit MBUSA.com/mbrace for more information.
- Heated steering wheel and wood/leather steering wheel may not be ordered together. On GL 550, optional heated steering wheel replaces standard wood/leather steering wheel.
- Extra-cost option.





## FOR A SMALL BLUE PLANET.

For more than 125 years—longer than any other automaker—we've been sharing this planet with you. And for generations, Mercedes-Benz has been breaking new ground to help preserve the earth for future generations. We introduced the world's first 100% CFC-free car, not just in its air conditioning but in its entire production process. We've used water-borne paint since the 1990s. And our cars have long used steam-expanded foam, sustainably forested wood, and natural products from coconut, flax and even olives. We've been pioneering advanced powertrains for generations, leading not just to today's Direct Injection gasoline, clean diesel and hybrid models, but to the electric and fuel cell vehicles of a tomorrow that's already here. Mercedes-Benz is also legendary for making cars of exceptional durability. After all, it takes about the same energy to build a car that lasts as one that won't. And along with award-winning factories and processes, we're helping to develop local infrastructures around the world to help bring a greener future to life. Like every aspect of Mercedes-Benz innovation, today's work sets the stage for the mobility—and the planet—that everyone will enjoy tomorrow.

## JOIN THE CONVERSATION.



follow us: [facebook.com/mercedesbenzusa](https://facebook.com/mercedesbenzusa)



follow us: [twitter.com/mbusa](https://twitter.com/mbusa)



visit us: [MBUSA.com](https://MBUSA.com)

©2012 Mercedes-Benz USA, LLC • One Mercedes Drive, Montvale, NJ 07645 • 1-800-FOR-MERCEDES • [MBUSA.com](https://MBUSA.com)  
Marketing Communications. All illustrations and specifications contained in this brochure are based on the latest product information available at the time of publication. Mercedes-Benz reserves the right to make changes at any time, without notice, to colors, materials, equipment, specifications and models. Any variations in colors shown are due to reproduction variations of the printing process. Illustrations may include test situations. Some vehicles may be shown with non -U.S. equipment. Some vehicles are shown with optional equipment. iPad, iPhone and iPod are registered trademarks of Apple Inc. Bluetooth is a registered trademark of Bluetooth SIG, Inc. Android, Google Maps, Google Street View and Panoramio are registered trademarks of Google Inc. harman/kardon and LOGIC7 are registered trademarks of Harman International Industries, Inc. HD Radio is a proprietary trademark of iBiquity Digital Corporation. Pandora is a registered trademark of Pandora Media, Inc. Sirius, XM and all related marks and logos are trademarks of Sirius XM Radio Inc.

