



# The S-Class Saloon

Effective from November 2020 Production.

Mercedes-Benz







Some of the model features, optional extras and colours shown may not be available, or may only be available in a different specification.







Some of the model features, optional extras and colours shown may not be available, or may only be available in a different specification.

Design	Technology	Safety	Model lines	Model prices	Personalisation	Standard equipment	Technical data	Additional information
--------	------------	--------	-------------	--------------	-----------------	--------------------	----------------	------------------------





S-Class

# Technology

Some of the model features, optional extras and colours shown may not be available, or may only be available in a different specification.

# Mercedes-Benz User Experience Premium

Transforming the in-car user experience, thanks to MBUX: Controlled via voice or touch input, the innovative infotainment system can over time even predict personal habits thanks to artificial intelligence.



Some of the model features, optional extras and colours shown may not be available, or may only be available in a different specification.



## Voice control

- Activated by the keywords “Hey Mercedes” or via touch control buttons on the steering wheel, the new intelligent voice control LINGUATRONIC<sup>1</sup> lets you control many of the infotainment functions, including destination input, phone calls or music selection. If you’re feeling chilly, just say “Hey Mercedes, I feel cold” and MBUX will adjust the temperature for you
- MBUX is able to understand different accents and will adjust to you over time

## Touch inputs

- Beside voice control you can operate MBUX via touchscreen, the optional 7-inch rear tablet, as well as touch control buttons on the steering wheel

<sup>1</sup>LINGUATRONIC off-board functions are currently available for three years and can be extended via the Mercedes me store

## Personalisation

- Turn the new S-Class into your very own Mercedes-Benz, thanks to the biometric authentication with voice recognition in every seat, face recognition (with 3D driver display), finger print scanner and PIN protection
- Take your personal profiles with you between cars – vehicle settings are no longer stored locally but within the user profile, which is connected to the customer’s Mercedes me account
- Thanks to artificial intelligence, MBUX is able to learn and adapt over time. It will be able to predict your personal habits, such as navigation for frequently-driven routes, or the radio station you like to listen to on your way home from work

## Maintenance and service

- Wondering when the next service is due? Or how much further you can drive until you need to stop at a petrol station? Just ask your MBUX – it will tell you the answer

Design	Technology	Safety	Model lines	Model prices	Personalisation	Standard equipment	Technical data	Additional information
--------	------------	--------	-------------	--------------	-----------------	--------------------	----------------	------------------------



# Revolutionary technology



**MBUX augmented reality head-up display** makes the front windscreen part of the digital cockpit. With the help of transparent projections onto the windscreen, the driver's field of vision is enhanced with relevant information about the current driving situation.

**12.8-inch OLED touchscreen central display** with augmented reality, fingerprint scanner, haptic feedback and integrated climate controls.



**MBUX 7-inch rear tablet** with the ability to control many on-board functions.

**12.3-inch 3D driver display** provides a clear three-dimensional representation of the driving situation and other road users, along with warning and navigation information.



Some of the model features, optional extras and colours shown may not be available, or may only be available in a different specification.

Design	Technology	Safety	Model lines	Model prices	Personalisation	Standard equipment	Technical data	Additional information
--------	------------	--------	-------------	--------------	-----------------	--------------------	----------------	------------------------

# Mercedes me connect

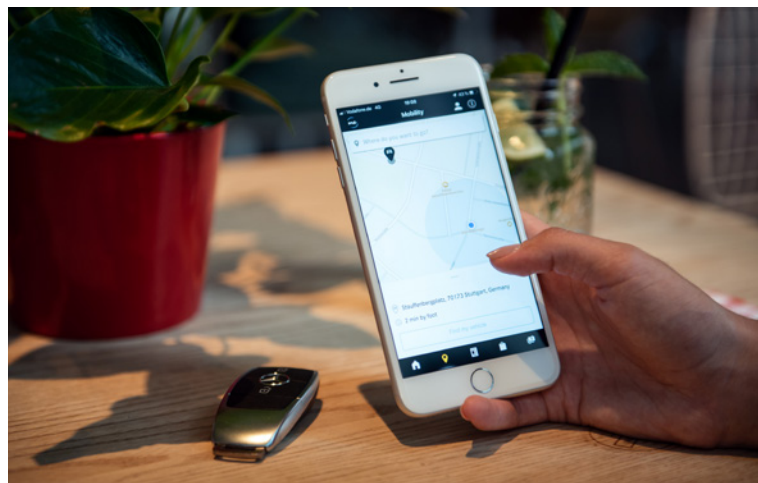
Stay connected any time, anywhere.

# Mercedes *me*

Mercedes me is a range of innovative online services designed to enhance your Mercedes-Benz experience. Accessible via mobile, tablet or PC, Mercedes me lets you enjoy the highest standards of care and support, in a way that integrates seamlessly with your busy lifestyle.

## Safety and Service – Mercedes me connect helps to keep you and your car safe

Check your car's oil level, tyre pressure and fuel from your phone so you'll be ready for every journey.



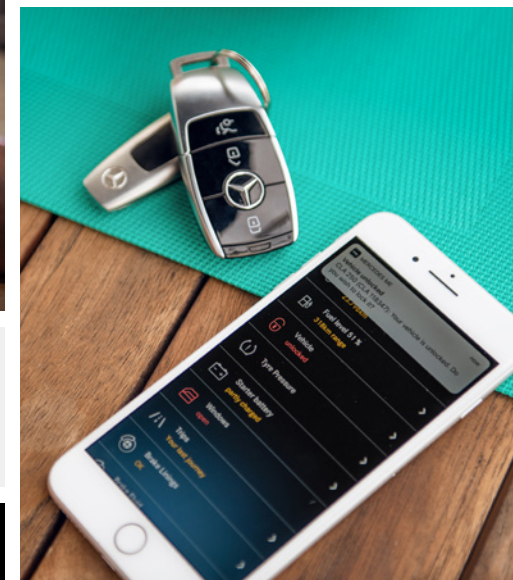
## Live Traffic Information, Parked Vehicle Locator and much more with Mercedes me connect

Forgot where you've parked? Parked Vehicle Locator<sup>1</sup> will show you exactly where your car is as long as you're in a 1-mile radius of where you parked. Real-time traffic data and dynamic route with shorter journey times.

For more information speak to your local Retailer or visit the Mercedes me connect store at [shop.mercedes-benz.com/en-gb/connect](http://shop.mercedes-benz.com/en-gb/connect)

## Comfort – connect to your car anytime, anywhere

Forgot to lock your car? With Remote Car Lock<sup>2</sup> you will receive a notification on your smartphone to let you know. With one tap, you can lock and unlock your vehicle so you never have to worry.



<sup>1</sup>Available on all models with the Vehicle Monitoring package. This option may vary between standard and additional cost dependent on the model

<sup>2</sup>Part of the Vehicle Status package. This option may vary between standard and additional cost dependent on the model

Images shown are for illustration purposes only



S-Class

# Safety

Some of the model features, optional extras and colours shown may not be available, or may only be available in a different specification.

Design	Technology	Safety	Model lines	Model prices	Personalisation	Standard equipment	Technical data	Additional information
--------	------------	--------	-------------	--------------	-----------------	--------------------	----------------	------------------------



# DIGITAL LIGHT

High-definition headlamps with innovative features

The new innovative DIGITAL LIGHT headlamps works like a projector with more than one million pixels per headlamp and responds with brilliant light to changing traffic, road or weather conditions. Its ULTRA RANGE Highbeam with 650 m makes you feel like driving at daylight.





# Driving Assistance package Cares for what matters.

The new S-Class comes with standard ground-breaking innovations in safety, comfort and driving functions, to help you stay safe on the road.



**Active Blind Spot Assist** expanded with blind spot monitoring towards the front and side. Additional hazard indication of the blind spot warning system as well as the exit warning function via the ambient lighting

**Active Braking Assist with cross-traffic function** now with turning manoeuvre function (responding to (among other things) crossing pedestrians when making a turn). Operating range on urban routes expanded to 74 mph (previously 44 mph)

**Active Distance Assist DISTRONIC** now responds to stationary road users to prevent collisions up to 80 mph (previously 37 mph)

**Active Emergency Stop Assist:** now able to assist in manual mode (previously only in DISTRONIC mode). Optional lane change by one lane (at 49 mph where no obstacles detected)

**Active Evasive Steering Assist:** now responds to cyclists and ends of tailbacks in addition to pedestrians. Operating range on urban routes expanded to 67 mph (previously 44 mph)

**Active Lane Change Assist** aids the driver with changing lanes by means of steering torque as soon as the driver initiates the change by activating the direction indicator

**Active Lane Keeping Assist** with enhanced comfort thanks to active steering intervention (instead of braking intervention). Additionally hazard indication via the ambient lighting

**Active Speed Limit Assist** ensures detected speed limits are automatically adopted as the set speed for Active Distance Assist DISTRONIC

Increased availability and cornering performance on carriageways with **Active Steering Assist**, more stern warnings to put hands on the steering wheel with new capacitive steering wheel

**PRE-SAFE® PLUS and Impulse Side:** when a rear-end collision threatens, PRE-SAFE® PLUS can initiate preventive measures, including warning following traffic and locking the brakes on standstill

**Route-based speed adjustment with end of traffic jam function and Active Stop-and-go function** adaption of speed before curves, roundabouts and junctions with end of traffic jam function

**Traffic Sign Assist** now warns of inadvertently running a stop sign or red light

Type-specific rendering of detected road users across several lanes on the driver display



# S-Class

Model lines overview

**AMG Line** (short wheelbase) »



**AMG Line Premium** (short and long wheelbase) »



**Long AMG Line Premium Executive** »



**Long AMG Line Premium Plus** »



**Long AMG Line Premium Plus Executive** »



# S-Class AMG Line (short wheelbase) Standard equipment highlights



MUTLIBEAM Intelligent Light System

## Exterior

19" AMG alloy wheels – 5-spoke, painted tantalite grey with high-shine finish, aerodynamically optimised

AMG bodystyling with chrome elements

AIRMATIC air suspension with automatic level control

Driving Assistance package

KEYLESS-GO with seamless door handles

Metallic paint

MUTLIBEAM Intelligent Light System

Parking package with reversing camera

Power closing doors and boot lid

Privacy glass

Radiator grille with chrome surround and three horizontal cross struts

Visible tailpipe trim in chrome



**AMG Line (short wheelbase) OTR from £78,705<sup>1</sup>**

<sup>1</sup>The recommended on-the-road price includes the Road Fund Licence applicable to the standard model plus delivery charge (£715.00 incl. VAT), new vehicle registration fee (£55.00) and number plates (£25.00 incl. VAT). VAT is calculated at the standard rate of 20%

Ambient lighting with 10 colour schemes and 64 colours



### Interior

Ambient lighting with 10 colour schemes and 64 colours

Heated front and rear seats completed in nappa leather

Illuminated door sills with 'Mercedes-Benz' lettering

Memory package for front seats

Multifunction sports steering wheel in nappa leather

THERMOTRONIC 4-zone automatic climate control

### Communications and In-Car Entertainment

Forward facing dashcam and augmented reality for navigation

MBUX Premium navigation with 12.8-inch OLED central display and 12.3-inch drivers display

Mercedes me Premium Services for three years

Sound system with 9 speakers

USB package plus including 8 USB-C connections

Wireless smartphone integration<sup>1</sup> and wireless charging<sup>1</sup> for mobile devices in the front

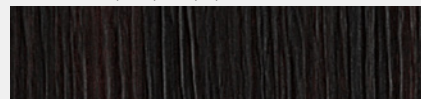
<sup>1</sup>Compatible mobile phone required



Memory package for front seats

### Trim and Upholstery

Anthracite open-pore poplar wood



Nappa leather – black





# S-Class AMG Line Premium (short and long wheelbase) Standard equipment highlights



Panoramic sliding sunroof

Option shown. Lorem ipsum...

In addition to/replacement of AMG Line:

**Exterior**

20" AMG alloy wheels – multi-spoke, painted in himalaya grey with high-shine finish

Panoramic sliding sunroof

Parking package with 360° camera and remote parking<sup>2</sup>



<sup>2</sup>Additional subscription may be required

AMG Line Premium (short wheelbase) OTR from **£85,200<sup>1</sup>**  
AMG Line Premium (long wheelbase) OTR from **£89,200<sup>1</sup>**

<sup>1</sup>The recommended on-the-road price includes the Road Fund Licence applicable to the standard model plus delivery charge (£715.00 incl. VAT), new vehicle registration fee (£55.00) and number plates (£25.00 incl. VAT). VAT is calculated at the standard rate of 20%

Design	Technology	Safety	Model lines	Model prices	Personalisation	Standard equipment	Technical data	Additional information
--------	------------	--------	-------------	--------------	-----------------	--------------------	----------------	------------------------

Active ambient lighting with 10 colour schemes and 64 colours



### Interior

Active ambient lighting with 10 colour schemes and 64 colours

Climatised rear seats – seat climate control for the two outer rear seats, 3-stage seat ventilation with fans in seat cushion and seat backrest, 3-stage seat heating Plus for driver and front passenger (long wheelbase only)

Electric rear seats with Memory package and luxury head restraints (long wheelbase only)

### Communications and In-Car Entertainment

12.3-inch 3D driver display

Burmester® 3D surround sound system with 15 speakers and 710 watts output

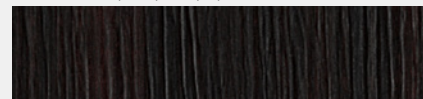
Sound personalisation



Burmester® 3D surround sound system

### Trim and Upholstery

Anthracite open-pore poplar wood



Nappa leather – black





# S-Class Long AMG Line Premium Executive

Standard equipment highlights



Long AMG Line Premium Executive OTR from **£92,995<sup>1</sup>**

<sup>1</sup>The recommended on-the-road price includes the Road Fund Licence applicable to the standard model plus delivery charge (£715.00 incl. VAT), new vehicle registration fee (£55.00) and number plates (£25.00 incl. VAT). VAT is calculated at the standard rate of 20%

Design	Technology	Safety	Model lines	Model prices	Personalisation	Standard equipment	Technical data	Additional information
--------	------------	--------	-------------	--------------	-----------------	--------------------	----------------	------------------------

Designer belt buckles front and rear with illumination



In addition to/replacement of AMG Line Premium:

#### Interior

Chauffeur package with foldable/removable head restraint on front passenger seat

Designer belt buckles front and rear with illumination

Double sun visors with pivoting section

Electric sun blind in rear window

Electric sun blinds in rear doors, left and right

Footrest on the back of the front passenger seat electrically extendable

Front passenger seat adjustable from the rear

#### Communications and In-Car Entertainment

MBUK rear tablet with 7-inch touchscreen

Wireless charging<sup>1</sup> (front and rear)

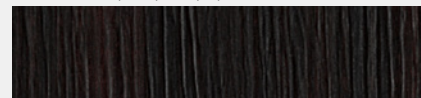
<sup>1</sup>Compatible mobile phone required

MBUK rear tablet with 7-inch touchscreen



#### Trim and Upholstery

Anthracite open-pore poplar wood



Nappa leather – black





# S-Class Long AMG Line Premium Plus

Standard equipment highlights



In addition to/replacement of Long AMG Line Premium:

## Exterior

21" AMG alloy wheels – multi-spoke, painted in himalaya grey with high-sheen finish

DIGITAL LIGHT with ULTRA RANGE highbeam

Heated windscreen



Long AMG Line Premium Plus OTR from **£95,695<sup>1</sup>**

<sup>1</sup>The recommended on-the-road price includes the Road Fund Licence applicable to the standard model plus delivery charge (£715.00 incl. VAT), new vehicle registration fee (£55.00) and number plates (£25.00 incl. VAT). VAT is calculated at the standard rate of 20%



### Interior

AIR BALANCE package include fragrance diffuser

Active multicontour front seats with inflatable air chambers and massage function

Climatised front seats with 3 stages and seat heating plus

Front ENERGIZING package including comfort programs

Heated armrest in the front and rear doors and centre console

Heated steering wheel

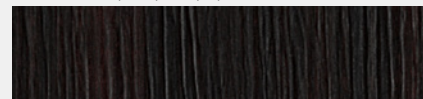
Luxury head restraints with additional cushion for driver and front passenger

MBUX augmented reality head-up display with display measuring 1,750 × 873 mm



### Trim and Upholstery

Anthracite open-pore poplar wood



Nappa leather – black





# S-Class Long AMG Line Premium Plus Executive

Standard equipment highlights

Option shown: designo diamond white metallic (code 799U)



Option shown: designo diamond white metallic (code 799U)



Long AMG Line Premium Plus Executive OTR from **£99,490<sup>1</sup>**

<sup>1</sup>The recommended on-the-road price includes the Road Fund Licence applicable to the standard model plus delivery charge (£715.00 incl. VAT), new vehicle registration fee (£55.00) and number plates (£25.00 incl. VAT). VAT is calculated at the standard rate of 20%

Design	Technology	Safety	Model lines	Model prices	Personalisation	Standard equipment	Technical data	Additional information
--------	------------	--------	-------------	--------------	-----------------	--------------------	----------------	------------------------



In addition to/replacement of Long AMG Line Premium Plus:

#### Interior

Chauffeur package with foldable/removable head restraint on front passenger seat

Designer belt buckles front and rear with illumination

Double sun visors with pivoting section

Electric sun blinds in rear doors, left and right

Electric sun blind in rear window

Footrest on the back of the front passenger seat electrically extendable

Front passenger seat adjustable from the rear

#### Communications and In-Car Entertainment

MBUK rear tablet with 7-inch touchscreen

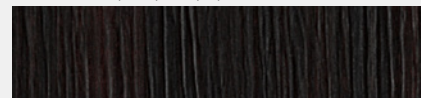
Wireless charging<sup>1</sup> (front and rear)

<sup>1</sup>Compatible mobile phone required



#### Trim and Upholstery

Anthracite open-pore poplar wood



Nappa leather – black





# Model prices

Model line	Engine	Transmission	CO <sub>2</sub> WLTP <sup>1*</sup>	Basic RRP excl. VAT (£)	Total RRP incl. VAT (£)	Road Fund Licence (£) <sup>2</sup> WLTP	Rec. OTR price (£) <sup>3</sup> WLTP	P11D value (£)	BiK tax rate 2020/21 (%) <sup>2</sup>
<b>AMG Line</b>									
S350 d	Diesel – 2,925 cc, 6-cylinder, 286 hp/210 kW	9G-TRONIC 9-speed automatic	173	64,200.00	£77,040.00	870.00	<b>78,705.00</b>	77,780.00	37
S500 4MATIC	Petrol – 2,999 cc, 6-cylinder, 435 hp/320 kW	9G-TRONIC 9-speed automatic	184	72,875.00	£87,450.00	860.00	<b>89,105.00</b>	88,190.00	37
<b>AMG Line Premium</b>									
S350 d	Diesel – 2,925 cc, 6-cylinder, 286 hp/210 kW	9G-TRONIC 9-speed automatic	184	69,612.50	83,535.00	870.00	<b>85,200.00</b>	84,275.00	37
S500 4MATIC	Petrol – 2,999 cc, 6-cylinder, 435 hp/320 kW	9G-TRONIC 9-speed automatic	196	78,287.50	93,945.00	1,295.00	<b>96,035.00</b>	94,685.00	37
<b>Long AMG Line Premium</b>									
S350 d	Diesel – 2,925 cc, 6-cylinder, 286 hp/210 kW	9G-TRONIC 9-speed automatic	187	72,945.83	87,535.00	870.00	<b>89,200.00</b>	88,275.00	37
S400 d 4MATIC	Diesel – 2,925 cc, 6-cylinder, 330 hp/320 kW	9G-TRONIC 9-speed automatic	192	76,695.83	92,035.00	1,305.00	<b>94,135.00</b>	92,775.00	37
S500 4MATIC	Petrol – 2,999 cc, 6-cylinder, 435 hp/320 kW	9G-TRONIC 9-speed automatic	199	81,620.83	97,945.00	1,295.00	<b>100,035.00</b>	98,685.00	37
<b>Long AMG Line Premium Executive</b>									
S350 d	Diesel – 2,925 cc, 6-cylinder, 286 hp/210 kW	9G-TRONIC 9-speed automatic	188	76,108.33	91,330.00	870.00	<b>92,995.00</b>	92,070.00	37
S400 d 4MATIC	Diesel – 2,925 cc, 6-cylinder, 330 hp/320 kW	9G-TRONIC 9-speed automatic	193	79,858.33	95,830.00	1,305.00	<b>97,930.00</b>	96,570.00	37
S500 4MATIC	Petrol – 2,999 cc, 6-cylinder, 435 hp/320 kW	9G-TRONIC 9-speed automatic	199	84,783.33	101,740.00	1,295.00	<b>103,830.00</b>	102,480.00	37
<b>Long AMG Line Premium Plus</b>									
S350 d	Diesel – 2,925 cc, 6-cylinder, 286 hp/210 kW	9G-TRONIC 9-speed automatic	190	78,358.33	94,030.00	870.00	<b>95,695.00</b>	94,770.00	37
S400 d 4MATIC	Diesel – 2,925 cc, 6-cylinder, 330 hp/320 kW	9G-TRONIC 9-speed automatic	195	82,108.33	98,530.00	1,305.00	<b>100,630.00</b>	99,270.00	37
S500 4MATIC	Petrol – 2,999 cc, 6-cylinder, 435 hp/320 kW	9G-TRONIC 9-speed automatic	201	87,033.33	104,440.00	1,295.00	<b>106,530.00</b>	105,180.00	37
<b>Long AMG Line Premium Plus Executive</b>									
S350 d	Diesel – 2,925 cc, 6-cylinder, 286 hp/210 kW	9G-TRONIC 9-speed automatic	190	81,520.83	97,825.00	870.00	<b>99,490.00</b>	98,565.00	37
S400 d 4MATIC	Diesel – 2,925 cc, 6-cylinder, 330 hp/320 kW	9G-TRONIC 9-speed automatic	196	85,270.83	102,325.00	1,305.00	<b>104,425.00</b>	103,065.00	37
S500 4MATIC	Petrol – 2,999 cc, 6-cylinder, 435 hp/320 kW	9G-TRONIC 9-speed automatic	202	90,195.83	108,235.00	1,295.00	<b>110,325.00</b>	108,975.00	37

<sup>1</sup>The indicated values were determined according to the prescribed measurement method - Worldwide Harmonised Light Vehicle Test Procedure (WLTP). Figures shown may include options which are not available in the UK. <sup>2</sup>Figures shown are for comparability purposes; only compare with other cars tested to the same technical procedures. <sup>3</sup>Figures may not reflect real life driving results, which will depend upon a number of factors including factory-fitted options, accessories fitted (post registration), variations in weather, driving styles and vehicle load. Further information about the test used to establish fuel consumption and CO<sub>2</sub> figures can be found at <http://www.mercedes-benz.co.uk/WLTP> <sup>2</sup>All engines are RDE (Real Driving Emissions) Step 2 Certified (6d-ISC-FCM). This results in a lower VED and BiK rate as these engines will not be subject to the diesel surcharge. A different first year rate of Vehicle Excise Duty (Road Fund Licence) applies for new cars. Please refer to page 33 for the relevant rate for the second and subsequent years <sup>3</sup>The recommended on-the-road price includes the Road Fund Licence applicable to the standard model plus delivery charge (£715.00 incl. VAT), new vehicle registration fee (£55.00) and number plates (£25.00 incl. VAT). VAT is calculated at the standard rate of 20%

Design	Technology	Safety	Model lines	Model prices	Personalisation	Standard equipment	Technical data	Additional information
--------	------------	--------	-------------	--------------	-----------------	--------------------	----------------	------------------------

# Upholstery

● Standard    ○ No-cost option



**801A** black nappa leather<sup>1</sup> with black roof liner

All model lines



**804A** sienna brown/black nappa leather<sup>1,2</sup> with black roof liner

All model lines



**805A** macchiato beige/magma grey nappa leather<sup>1</sup> with beige roof liner

All model lines



<sup>1</sup>100% of seat upholstery is pure leather    <sup>2</sup>Not in conjunction with rubellite red metallic paint (code 660U)



# Colour options

Total prices incl. VAT

☒ Standard
 ☐ No-cost option



197U obsidian black metallic

☒



346U onyx black metallic

☐



660U rubellite red metallic<sup>1</sup>

☐



859U mojave silver metallic

☐



922U high-tech silver metallic

☐



989U emerald green metallic

☐



992U selenite grey metallic

☐



998U anthracite blue metallic

☐



799U designo diamond white metallic

£695.00

<sup>1</sup>Not in conjunction with nappa leather sienna brown/black (code 804A)

Design	Technology	Safety	Model lines	Model prices	Personalisation	Standard equipment	Technical data	Additional information
--------	------------	--------	-------------	--------------	-----------------	--------------------	----------------	------------------------

# Standard equipment

● Standard    – Not available

## Engine, Transmission and Suspension

	AMG Line	L AMG Line Premium	L AMG Line Premium Executive	L AMG Line Premium Plus	L AMG Line Premium Plus Executive
AdBlue® diesel emission control system (S350 d and S400 d 4MATIC only)	●	●	●	●	●
AIRMATIC air suspension – air suspension struts at the front and rear axle, automatic level control system, dependent on load: load detection for a constant suspension level, suspension level can be raised for rough roads and is automatically lowered at high speeds	●	●	●	●	●
Diesel particulate filter (S350 d and S400 d 4MATIC only)	●	●	●	●	●
DYNAMIC SELECT with a choice of driving modes	●	●	●	●	●
EQ Boost starter-alternator (48V Mild Hybrid Technology) (S500 4MATIC only)	●	●	●	●	●
Petrol particulate filter (S500 4MATIC only)	●	●	●	●	●
RDE2 certification	●	●	●	●	●

## Exterior

AMG front apron in an A-wing design with large air intakes and fins in chrome plus front splitter in chrome	●	●	●	●	●
AMG rear apron with diffuser and trim element in chrome	●	●	●	●	●
Electrically adjustable, heated and automatic dimming (exterior driver's side) mirrors with kerb/parking function	●	●	●	●	●
Exterior mirrors – ambient lighting with projection of brand logo	●	●	●	●	●
Grey-painted brake callipers with 'Mercedes-Benz' lettering at the front, at the rear with grey logo badge	●	●	●	●	●
HANDS-FREE ACCESS – contactless opening of the boot lid	●	●	●	●	●
Heat-insulating, dark-tinted glass	●	●	●	●	●
Heat-insulating, dark-tinted, noise-insulating and infrared-reflecting laminated glass (S500 4MATIC only)	●	●	●	●	●
Heated windscreen	–	–	–	–	●

KEYLESS-GO starting function	●	●	●	●	●
KEYLESS-GO with seamless door handles	●	●	●	●	●
Large compound brake discs, 390×36 mm, internally ventilated and perforated at the front	●	●	●	●	●
Large compound brake discs, 360×26 mm, internally ventilated and perforated at the rear	●	●	●	●	●
MAGIC VISION CONTROL	●	●	●	●	●
Noise reduced tyre with foam absorber – experience first-class noise comfort – in the truest sense of the word. Foam material on the inside of the tyre tread acts like a sound absorber. This makes the interior even quieter	●	●	●	●	●
Headlamps – DIGITAL LIGHT – HD system with projection module (more than one million pixels per headlamp) and MULTIBEAM LED background module (84 high-performance LEDs per headlamp), with data from the camera, sensors and navigation system, the brightness value for each individual pixel is calculated virtually in real time, Adaptive Highbeam Assist Plus (anti-dazzle continuous main beam), ULTRA RANGE Highbeam with 650 m range (legally permitted maximum headlamp range), topographical compensation, cornering light with roundabout and junction functions, active light function with anticipatory control, enhanced fog light function, city light, country road mode, motorway mode, motorway main beam and adverse weather light, Adaptive full-LED tail lights with multi-level functionality and sequential indicator lamps	–	–	–	–	●
Headlamps – MULTIBEAM LED – 84 individually controllable high-performance LEDs per MULTIBEAM LED module, LED dipped beam and main beam, Adaptive Highbeam Assist Plus (anti-dazzle continuous main beam), cornering light with roundabout and junction functions, active light function with anticipatory control, enhanced fog light function, city light, country road mode, motorway mode and adverse weather light, adaptive all-LED rear lamps	●	●	●	●	–
Panoramic sliding sunroof	–	●	●	●	●
Power closing doors and boot lid – the assisted closing function closes doors smoothly and almost silently	●	●	●	●	●



# Standard equipment

● Standard    – Not available

## Exterior (continued)

	AMG Line	L AMG Line Premium	L AMG Line Premium Executive	L AMG Line Premium Plus	L AMG Line Premium Plus Executive	
Radiator grille with chrome surround and three horizontal cross struts in chrome with inserts in high-gloss black	●	●	●	●	●	●
Remote boot lid closing – open and close the boot lid from the driver's seat, while standing at the boot, or by using the vehicle key	●	●	●	●	●	●
Side sill panels with chrome insert	●	●	●	●	●	●
Solid roof	●	–	–	–	–	–
Summer tyres	●	●	●	●	●	●
TIREFIT	●	●	●	●	●	●
Shoulderline trim strip in chrome-look finish	●	●	●	●	●	●
Visible tailpipe trim elements in chrome	●	●	●	●	●	●

## Interior

12 V socket in boot	●	●	●	●	●	●
12 V socket in rear of centre console plus in the front passenger footwell	●	●	●	●	●	●
AIR-BALANCE package	–	–	–	–	●	●
AMG floor mats	●	●	●	●	●	●
AMG pedals in brushed stainless steel with rubber studs	●	●	●	●	●	●
Active Multicontour seats for driver and front passenger – active multicontour seats in the front with separately adjustable air chambers which can be set via the multimedia system, dynamic driving functions with automatic lateral stability depending on steering angle, lateral acceleration and speed of the vehicle, dynamically inflatable air chambers generate a massage function of varying intensity, two programmes offer an additional warming effect derived from the principle of a hot-stone massage, PRE-SAFE® function	–	–	–	–	●	●
Automatically dimming rear view mirror	●	●	●	●	●	●

Chauffeur package – allows more footroom in rear behind the front passenger seat	–	–	–	●	–	●
Climatised front seats – seat climate control for driver and front passenger, 3-stage seat ventilation with fans in seat cushion and seat backrest, 3-stage Seat Heating Plus for driver and front passenger	–	–	–	–	●	●
Climatised rear seats – seat climate control for the two outer rear seats, 3-stage seat ventilation with fans in seat cushion and seat backrest, 3-stage Seat Heating Plus for the two outer rear seats	–	–	●	●	●	●
Double sun visors	–	–	–	●	–	●
EASY ADJUST luxury head restraints with additional cushion for driver and front passenger, foldable and removable on front passenger side	–	–	–	●	–	●
EASY ADJUST luxury head restraints with additional cushion for driver and front passenger	–	–	–	–	●	–
EASY-ENTRY system	●	●	●	●	●	●
ECO start/stop function	●	●	●	●	●	●
Electric sunblind for rear window	–	–	–	●	–	●
Electric sunblinds in rear doors, left and right	–	–	–	●	–	●
Electrically adjustable rear seats including memory function	–	–	●	●	●	●
Four-way lumbar support for driver and front passenger	●	●	●	●	●	●
Front ENERGIZING package	–	–	–	–	●	●
Heated front seats	●	●	●	●	–	–
Heated rear seats	●	●	–	–	–	–
Illuminated door sill panels with 'Mercedes-Benz' lettering	●	●	●	●	●	●
Interior lighting – active ambient lighting with 64 colours and 10 colour schemes	–	●	●	●	●	●
Interior lighting – ambient lighting with 64 colours and 10 colour schemes	●	–	–	–	–	–

# Standard equipment

● Standard    – Not available

## Interior (continued)

	AMG Line	L AMG Line Premium	L AMG Line Premium Executive	L AMG Line Premium Plus	L AMG Line Premium Plus Executive	
Memory package with electrically adjustable driver and front passenger seats, steering column and exterior mirrors, with 3 storable positions	●	●	●	●	●	●
Rear centre armrest with double cup holder	●	●	●	●	●	●
Seat Heating for driver and front passenger	●	●	●	●	–	–
Seat Heating for two outer rear seats	●	●	–	–	–	–
Seat on front passenger side electrically adjustable from the rear	–	–	–	●	–	●
THERMOTRONIC four-zone automatic climate control	●	●	●	●	●	●
Through-loading feature	●	●	●	●	●	●
Two bag hooks	●	●	●	●	●	●
Umbrella holder	●	●	●	●	●	●
Warmth Comfort package – heated armrests in the front and rear doors, heated armrest in the centre console at the front	–	–	–	–	●	●

## Steering

Direct steering	●	●	●	●	●	●
Multifunction sports steering wheel in nappa leather	●	●	●	●	●	●
Steering column gear selector	●	●	●	●	●	●
Steering wheel gearshift paddles	●	●	●	●	●	●
Steering wheel heating	–	–	–	–	●	●

## Paint, Trim and Upholstery

	AMG Line	L AMG Line Premium	L AMG Line Premium Executive	L AMG Line Premium Plus	L AMG Line Premium Plus Executive	
Anthracite open-pore poplar wood trim	●	●	●	●	●	●
Centre console in a black crystal-look finish	●	●	●	●	●	●
Fabric roof liner	●	●	●	●	●	●
Metallic paint	●	●	●	●	●	●
Nappa leather upholstery	●	●	●	●	●	●

## Safety and Assistance Systems

Adaptive brake lights	●	●	●	●	●	●
Airbags – centre airbag, driver and front passenger airbags, front sidebags and windowbags	●	●	●	●	●	●
Anti-lock braking system (ABS) with Brake Assist (BAS)	●	●	●	●	●	●
ATTENTION ASSIST	●	●	●	●	●	●
Automatic child seat recognition sensor	●	●	●	●	●	●
Brake pad wear indicator – front brakes	●	●	●	●	●	●
Crosswind Assist	●	●	●	●	●	●
Dashcam	●	●	●	●	●	●
Designer belt buckles front and rear	–	–	–	●	–	●
Driving Assistance package	●	●	●	●	●	●
Electric parking brake	●	●	●	●	●	●
Electric Stability Program (ESP®) with Acceleration Skid Control (ASR)	●	●	●	●	●	●
First aid kit	●	●	●	●	●	●



# Standard equipment

● Standard    – Not available

## Safety and Assistance Systems (continued)

	AMG Line	L AMG Line Premium	L AMG Line Premium Executive	L AMG Line Premium Plus	L AMG Line Premium Plus Executive	L AMG Line Premium Plus Executive
Increased anti-theft protection	●	●	●	●	●	●
INTELLIGENT PARKING PILOT	–	●	●	●	●	●
Mercedes-Benz emergency call system	●	●	●	●	●	●
Parking package with reversing camera	●	–	–	–	–	–
Parking package with 360° camera	–	●	●	●	●	●
Pedestrian protection	●	●	●	●	●	●
PRE-SAFE® system including PRE-SAFE sound	●	●	●	●	●	●
Rear belt status indication in the instrument display	●	●	●	●	●	●
Tyre pressure loss warning system	●	●	●	●	●	●
URBAN GUARD vehicle protection	●	–	–	–	–	–
URBAN GUARD vehicle protection plus	–	●	●	●	●	●

## Communications and In-Car Entertainment

	AMG Line	L AMG Line Premium	L AMG Line Premium Executive	L AMG Line Premium Plus	L AMG Line Premium Plus Executive	L AMG Line Premium Plus Executive
3D driver display	–	●	●	●	●	●
Accident recovery and breakdown management¹ – in an emergency quickly provides a connection to the Customer Assistance Centre in order to obtain assistance, for example with recovery of the vehicle or from the breakdown service Mercedes-Benz Service24h	●	●	●	●	●	●
Communications module (LTE Advanced) for the use of Mercedes me connect services¹	●	●	●	●	●	●
DAB digital radio	●	●	●	●	●	●
Driver display	●	–	–	–	–	–
Extended MBUX functions	●	●	●	●	●	●

Fingerprint scanner – colour-illuminated fingerprint scanner in the trim strip below the OLED media display, two fingerprints per user can be stored, quick access replaces PIN entry, protects personal data such as profiles plus office and payment functions

Hard-disc navigation

Geofencing – available to use free of charge for three years following activation¹, denotes a specific area and notifies via push message when the vehicle leaves or enters this area

Maintenance management¹ – proactively transfers maintenance details to the preferred Mercedes-Benz service partner in order to coordinate workshop appointments

MBUX augmented reality head-up display

MBUX augmented reality for navigation

MBUX navigation premium

MBUX rear tablet

OLED central display

Parked vehicle locator – available to use free of charge for three years following activation¹, shows the position of the parked vehicle in a radius of approx. 1.5 km

Personalisation – available to use free of charge for three years following activation¹, stores settings such as the radio station or navigation destination in the personal driver profile and enables these to be used in vehicles with the same telematics generation, the profile can be linked to the key, and the functions can therefore already be activated before getting in

Pre-installation for Navigation Services – display of online content on the navigation map, parking spaces, weather information, local search

Remote Door Locking and Unlocking – available to use free of charge for three years following activation¹, provides convenient remote monitoring

	AMG Line	L AMG Line Premium	L AMG Line Premium Executive	L AMG Line Premium Plus	L AMG Line Premium Plus Executive	L AMG Line Premium Plus Executive
Fingerprint scanner – colour-illuminated fingerprint scanner in the trim strip below the OLED media display, two fingerprints per user can be stored, quick access replaces PIN entry, protects personal data such as profiles plus office and payment functions	●	●	●	●	●	●
Hard-disc navigation	●	●	●	●	●	●
Geofencing – available to use free of charge for three years following activation¹, denotes a specific area and notifies via push message when the vehicle leaves or enters this area	●	●	●	●	●	●
Maintenance management¹ – proactively transfers maintenance details to the preferred Mercedes-Benz service partner in order to coordinate workshop appointments	●	●	●	●	●	●
MBUX augmented reality head-up display	–	–	–	–	●	●
MBUX augmented reality for navigation	●	●	●	●	●	●
MBUX navigation premium	●	●	●	●	●	●
MBUX rear tablet	–	–	–	●	–	●
OLED central display	●	●	●	●	●	●
Parked vehicle locator – available to use free of charge for three years following activation¹, shows the position of the parked vehicle in a radius of approx. 1.5 km	●	●	●	●	●	●
Personalisation – available to use free of charge for three years following activation¹, stores settings such as the radio station or navigation destination in the personal driver profile and enables these to be used in vehicles with the same telematics generation, the profile can be linked to the key, and the functions can therefore already be activated before getting in	●	●	●	●	●	●
Pre-installation for Navigation Services – display of online content on the navigation map, parking spaces, weather information, local search	●	●	●	●	●	●
Remote Door Locking and Unlocking – available to use free of charge for three years following activation¹, provides convenient remote monitoring	●	●	●	●	●	●

¹To use this service, you must register on the Mercedes me portal and also accept the Terms of Use for the Mercedes me connect services. In addition, the respective vehicle must be paired with the user account. Upon expiry of the initial term, the services can be extended for a fee. Initial activation of the services is possible within one year of first registration or commissioning by the customer, whichever occurs first

Design	Technology	Safety	Model lines	Model prices	Personalisation	Standard equipment	Technical data	Additional information
--------	------------	--------	-------------	--------------	-----------------	--------------------	----------------	------------------------

# Standard equipment

● Standard    – Not available

## Communications and In-Car Entertainment (continued)

	AMG Line	L AMG Line Premium	L AMG Line Premium Executive	L AMG Line Premium Plus	L AMG Line Premium Plus Executive
Remote parking package – available to use free of charge for 3 years following activation <sup>1</sup>	●	●	●	●	●
Remote retrieval of vehicle status <sup>1</sup> – shows mileage, tyre pressure, washer fluid level, etc.	●	●	●	●	●
Remote vehicle diagnostics <sup>1</sup> – enables better support in the workshop by allowing the Mercedes-Benz service partner to query the vehicle status prior to an upcoming workshop appointment	●	●	●	●	●
Remote vehicle finder – available to use free of charge for three years following activation <sup>1</sup> indicators activated via the app help to draw attention to the vehicle, for example in large, confusing car parks	●	●	●	●	●
Send2Car function – available to use free of charge for three years following activation <sup>1</sup> , sends selected addresses via the app to the vehicle's navigation system, for example POIs or restaurants	●	●	●	●	●
Sliding sunroof/windows with remote closing and opening including ventilation function to use free of charge for three years following activation <sup>1</sup> for a breath of fresh air in the vehicle available	●	●	●	●	●
Software update <sup>1</sup> – updates the software of the vehicle's systems without having to visit the workshop	●	●	●	●	●
Sound personalisation – a setup assistant with innovative algorithms identifies your music preferences together with you and sets the Burmester® sound system to match your requirements. It stores the result in a personal profile	–	●	●	●	●

	AMG Line	L AMG Line Premium	L AMG Line Premium Executive	L AMG Line Premium Plus	L AMG Line Premium Plus Executive
Sound system – Burmester® 3D surround sound system	–	●	●	●	●
Sound system – sound system with nine speakers	●	–	–	–	–
Speed fencing – available to use free of charge for 3 years following activation <sup>1</sup> , also lists when and where the pre-defined speed was exceeded	●	●	●	●	●
Telediagnostics <sup>1</sup> – notifies the Customer Assistance Centre or the preferred Mercedes-Benz service partner when components with diagnostics capability need replacing (e.g. brake pads) and enables contact to be made via a pop-up message in the vehicle's multimedia system	●	●	●	●	●
USB Plus package – four additional USB-C connections, two at the front and in the rear	●	●	●	●	●
Valet protect – available to use free of charge for 3 years following activation <sup>1</sup> notifies via the app when the ignition is switched on/off and when the vehicle moves outside a defined radius (1km, 2.5 km or 5 km)	●	●	●	●	●
Vehicle Tracker	●	●	●	●	●
Wireless smartphone integration <sup>3</sup>	●	●	●	●	●
Wireless charging system for mobile devices in the front <sup>3</sup>	●	●	●	●	●
Wireless charging system for mobile devices in the rear <sup>3</sup>	–	–	–	●	●

<sup>1</sup>To use this service, you must register on the Mercedes me portal and also accept the Terms of Use for the Mercedes me connect services. In addition, the respective vehicle must be paired with the user account. Upon expiry of the initial term, the services can be extended for a fee. Initial activation of the services is possible within 1 year of first registration or commissioning by the customer, whichever occurs first    <sup>2</sup>Additional contract with Vodafone required    <sup>3</sup>Compatible smartphone required. For further details please visit <https://www.mercedes-benz-mobile.com/>



# Technical data

- Standard

Model		S 500 4MATIC [L]		S 350 d [L]		S 400 d 4MATIC L	
Engine							
Fuel delivery		Petrol		Diesel		Diesel	
Total displacement		cc	2,999	2,925		2,925	
Arrangement/cylinders/valves		in-line/6/24		in-line/6/24		in-line/6/24	
Power <sup>1</sup>	hp (kW) at rpm	435 (320)/6,100		286 (210)/3,400–4,600		330 (243)/3,600–4,200	
Combustion engine							
Torque <sup>1</sup>	Nm at rpm	520/1,800–5,800		600/1,200–3,200		700/1,200–3,200	
Combustion engine							
Compression ratio		tbc		tbc		tbc	
Emissions standard		EURO 6D-ISC-FCM		EURO 6D-ISC-FCM		EURO 6D-ISC-FCM	
Transmission							
9G-TRONIC 9-speed automatic		●		●		●	
Performance							
Acceleration 0–62 mph	sec	4.9		6.4		5.4	
Top speed (electronically limited)	mph	155		155		155	
Weights and capacities							
Kerb weight <sup>2</sup>	kg	2,045 [2,065]		2,020 [2,040]		2,090	
Perm. Gross Vehicle Weight	kg	2,810 [2,820]		2,720 [2,765]		2,815	
Boot capacity	l	550		540		540	
Towing capacity – unbraked		750		750		750	
braked	kg	2,100		2,100		2,100	
Fuel tank capacity/of which reserve	l	76/8		76/8		76/8	
Turning circle	m	12.5 [12.8]		12.2 [12.5]		12.8	

<sup>1</sup>Figures according to Directive 80/1269/EEC in the currently applicable version   <sup>2</sup>Mass of the vehicle in running order with at least 90% full fuel tank, plus the mass of the driver (estimated by law at 75 kg), fuel and fluids, equipped with the standard equipment as specified by the manufacturer as well as, where applicable, the mass of the body, cab, trailer coupling and spare wheel(s) as well as tools. Optional extras, additional equipment and accessories can influence the weight, residual payload, rolling resistance, aerodynamics, etc., and therefore also affect the consumption/CO<sub>2</sub> values

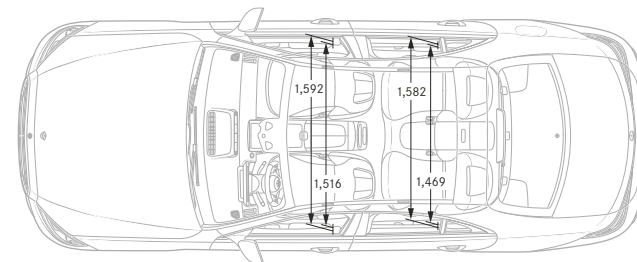
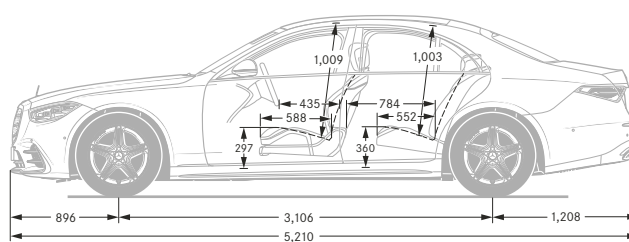
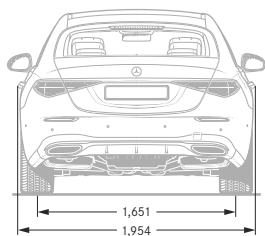
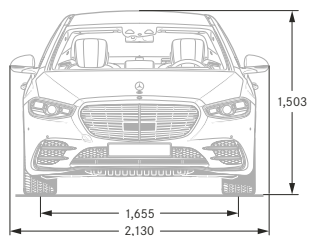
# Technical data

Model		S 500 4MATIC [L]		S 350 d [L]		S 400 d 4MATIC L	
Fuel consumption <sup>3,4,5</sup>							
Combined (consumption dependent on chosen optional equipment)	l/100 km	8.6–8.1 [8.9–8.7]		7.0–6.6 [7.2–7.1]		7.5–7.4	
	mpg	32.8–34.9 [31.7–32.5]		40.4–42.8 [39.2–39.8]		37.7–38.7	
Insurance							
Group rating		tba		tba		tba	
Insurance ratings may vary depending on model line and specification. Please refer to <a href="http://www.thatcham.org/abigrouprating/">http://www.thatcham.org/abigrouprating/</a> for further details							

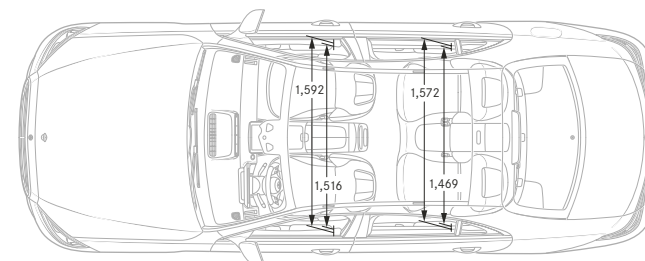
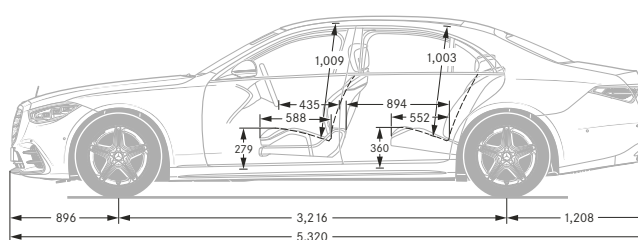
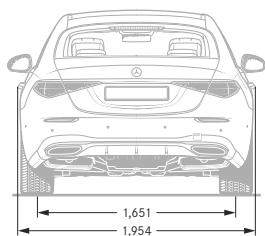
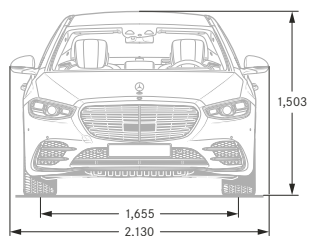
<sup>3</sup>All figures are based on a standard specification with the smallest tyre size    <sup>4</sup>The choice of wheels and transmission may affect CO<sub>2</sub> emissions and corresponding Road Fund Licence    <sup>5</sup>The indicated values were determined according to the prescribed measurement method - Worldwide Harmonised Light Vehicle Test Procedure (WLTP). Figures shown may include options which are not available in the UK



## AMG Line (short wheelbase)



## AMG Line Premium (long wheelbase)



All measurements in millimetres. The dimensions shown are mean values and apply to standard-specification, unladen vehicles

Design	Technology	Safety	Model lines	Model prices	Personalisation	Standard equipment	Technical data	Additional information
--------	------------	--------	-------------	--------------	-----------------	--------------------	----------------	------------------------

# Road Fund Licence

All road vehicle registrations are subject to Vehicle Excise Duty (Road Fund Licence), which varies in accordance with the vehicle's CO<sub>2</sub> emissions. A first year rate for each taxation band will apply. The table below shows the bands (A-M) created by the DVLA and the corresponding Road Fund Licence. CO<sub>2</sub> emissions and the relevant Excise Duty are shown on the model pricing pages.

Band	CO <sub>2</sub> emissions (g/km)	First year rate petrol and RDE2 diesel (£)	First year rate all other diesel (£) <sup>1</sup>	First year rate alternative fuel (£)	Electric vehicles		Alternative fuel vehicles		Petrol/diesel vehicles	
					Standard rate (£)	Premium rate (£) <sup>2</sup>	Standard rate (£)	Premium rate (£) <sup>2</sup>	Standard rate (£)	Premium rate (£) <sup>2</sup>
A	0	0.00	0.00	0.00	0.00	0.00	0.00	0.00	0.00	0.00
B	1 to 50	10.00	25.00	0.00	0.00	0.00	140.00	465.00	150.00	475.00
C	51 to 75	25.00	110.00	15.00	0.00	0.00	140.00	465.00	150.00	475.00
D	76 to 90	110.00	135.00	100.00	0.00	0.00	140.00	465.00	150.00	475.00
E	91 to 100	135.00	155.00	125.00	0.00	0.00	140.00	465.00	150.00	475.00
F	101 to 110	155.00	175.00	145.00	0.00	0.00	140.00	465.00	150.00	475.00
G	111 to 130	175.00	215.00	165.00	0.00	0.00	140.00	465.00	150.00	475.00
H	131 to 150	215.00	540.00	205.00	0.00	0.00	140.00	465.00	150.00	475.00
I	151 to 170	540.00	870.00	530.00	0.00	0.00	140.00	465.00	150.00	475.00
J	171 to 190	870.00	1,305.00	860.00	0.00	0.00	140.00	465.00	150.00	475.00
K	191 to 225	1,305.00	1,850.00	1,295.00	0.00	0.00	140.00	465.00	150.00	475.00
L	226 to 255	1,850.00	2,175.00	1,840.00	0.00	0.00	140.00	465.00	150.00	475.00
M	over 255	2,175.00	2,175.00	2,165.00	0.00	0.00	140.00	465.00	150.00	475.00

Some of the model features, optional extras and colours shown may not be available, or may only be available in a different specification

<sup>1</sup>Applies to all Mercedes-Benz diesel models which do not comply with RDE (Real Driving Emissions) Step 2 Certified (Euro 6d)

<sup>2</sup>Premium rate only applicable to vehicles where the list price is over £40,000 including any factory-fitted options, standard UK delivery charge, number plates, fuel and VAT





# Services and insurance

## Mercedes-Benz ServiceCare

We believe that servicing costs should be as flexible and affordable as possible for your S-Class, which is why we offer ServiceCare, an easy way to budget for all your servicing costs. It spreads your bills into manageable payments based on whether you have a new or used Mercedes-Benz. With ServiceCare we guarantee the price of parts and labour for up to four services and safeguard against any further inflation. It also covers the cost of all recommended service items including brake fluid, spark plugs, air filters, fuel filters and screen wash. You can choose either to add your servicing costs into your monthly spend or pay the full amount in a one-off payment, giving you peace of mind that they are taken care of for the period of the plan.

[Click here for more information](#)

## Warranty and breakdown cover

Every Mercedes-Benz comes with a three-year unlimited mileage warranty against manufacturing or material defects<sup>1</sup> and up to 30 years warranty against perforation due to corrosion from the inside out.<sup>2</sup> What's more, it's also covered by Mercedes-Benz Roadside Assistance – a unique package comprising up to 30 years pan-European breakdown assistance.<sup>2</sup>

## Motor Insurance

Superb cover comes as standard. When reviewed by an independent research company, Defaqto, Mercedes-Benz Motor Insurance received a five-star rating, the highest rating available. We design our Motor Insurance specifically for Mercedes-Benz drivers.

[Get a quote](#)



<sup>1</sup>Applies to vehicles sold by Mercedes-Benz in the UK to its franchised Retailers  
<sup>2</sup>Subject to full Terms and Conditions, dependent on date of registration, available upon request  
Mercedes-Benz Motor Insurance is underwritten by Aviva Insurance UK Limited. Credit provided, subject to status, by Mercedes-Benz Financial Services UK Ltd, MK15 8BA



Effective from November 2020 Production. Information correct at time of publication 15.09.2020.  
Prices and specifications are subject to change without prior notice.  
MBWV223/1220

