



# The Mercedes-Benz Citan.

Prices effective from August 2024.

Mercedes-Benz





## Contents

> Model overview	3
> Trims	
Citan PRO	4
Citan PRO +	5
> Colours and Upholstery	6
> Equipment	7
> Engine and gearbox	10
> Fuel consumption	11
> Weights and payloads	12
> Dimensions	13
> List prices	14
> After sales	15

### Please note

This document provides information about the model range line-up and specifications of the Citan. It also contains key details about options, economy and performance of all variants. Details are correct at time of publication and are subject to revision. Any images used in this document may not reflect Irish specification and are for illustrative purposes only. Images may show optional equipment which does not form part of Irish standard specification.



# The Mercedes-Benz Citan.

1 van model:

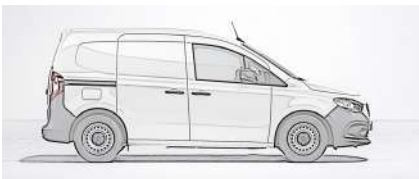


Panel Van - 2 seats

2 lengths:



Long: 4,498mm



Extra Long: Coming in 2023

2 trims:



PRO



PRO +

Discover more about the Mercedes-Benz Citan models in our range on: [www.mercedes-benz.ie/vans/en/citan](http://www.mercedes-benz.ie/vans/en/citan)

Citan PRO	Citan PRO +	Equipment	Engine & gearbox	Fuel consumption	Weights & payload	Dimensions	List prices	Aftersales	
-----------	-------------	-----------	------------------	------------------	-------------------	------------	-------------	------------	--

# The Citan PRO.

Features included as standard:

## Interior

- Multifunction steering wheel
- Smartphone integration package
- 6 airbags for driver and passenger
- Thorax-sidebags and windowbags
- Air-conditioning
- Armrest with stowage compartment
- ECO start/stop function
- Heat-insulating glass
- Height and rake adjustable steering wheel
- Interior lighting with LED technology
- Upholstery in Caluma black fabric

## Exterior

- Exterior Mirrors Heated & Electrically Adjustable
- 5-Twin Spoke Design Wheels
- Tyre Pressure Monitoring System
- Sliding Door Rail in Vehicle Colour

## Safety, security and connectivity

- Alarm
- ATTENTION ASSIST
- Breakdown Assistance Button
- Cruise control/Speed limiter
- Double Lock
- Hill-Start ASSIST
- MBUX multimedia system with DAB
- Reversing Camera

From €24,636\*

\*Based on a Citan 110 PRO

- **1 length available**  
Compact 4,498 mm
- **2 transmission available**  
6-speed (manual)  
7-speed (automatic)

➤ [Arrange a test drive at your nearest Dealership](#)



# The Citan PRO +

## Additional features included with the PRO +:

- Body-coloured bumper
- 10-spoke light-alloy wheels
- LED High performance headlamps
- Electric Parking Brake
- Shift Lever in Leather

## Features included as standard:

### Interior

- Multifunction steering wheel
- Smartphone integration package
- 6 airbags for driver and passenger
- Thorax-sidebags and windowbags
- Air-conditioning
- Armrest with stowage compartment
- ECO start/stop function
- Heat-insulating glass
- Height and rake adjustable steering wheel
- Interior lighting with LED technology
- Upholstery in Caluma black fabric

### Exterior

- Exterior Mirrors Heated & Electrically Adjustable
- Tyre Pressure Monitoring System
- Sliding Door Rail in Vehicle Colour

### Safety, security and connectivity

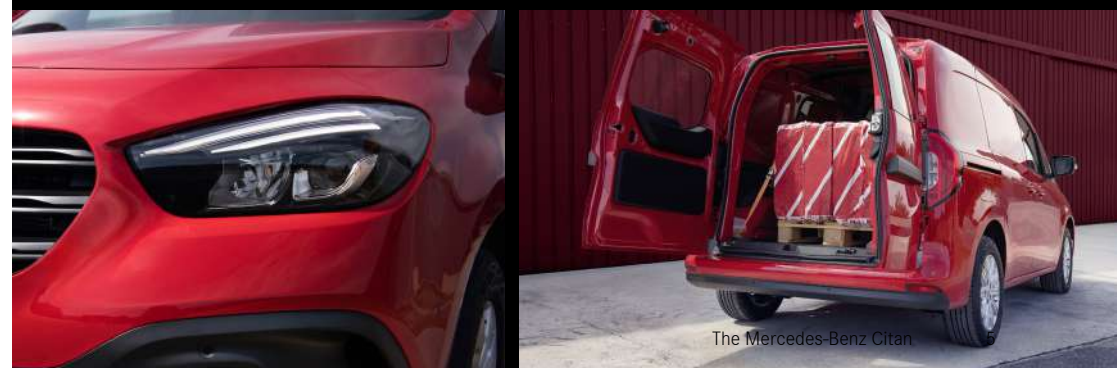
- Alarm
- ATTENTION ASSIST
- Breakdown Assistance Button
- Cruise control/Speed limiter
- Double Lock
- Hill-Start ASSIST
- MBUX multimedia system with DAB
- Reversing Camera

From €26,709\*

\*Based on a Citan 110 PRO +

- 1 length available  
Compact 4,498 mm
- 2 transmission available  
6-speed (manual)  
7-speed (automatic)

➤ [Arrange a test drive at your nearest Dealership](#)



The Mercedes-Benz Citan

Citan PRO

Citan PRO +

Equipment

Engine & gearbox

Fuel consumption

Weights & payload

Dimensions

List prices

Aftersales



# Colours and upholstery.

## Solid paints - standard on PRO



Arctic white



Lorandite red



Magnetite grey

## Metallic paints - Optional on PRO and PRO +



Helvite silver metallic



Limonite yellow metallic



Chromite grey metallic

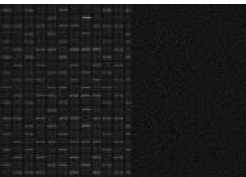


Loparite black metallic



Canvasite blue metallic

## Interior upholstery



Black Caluma seat upholstery

➤ For paint pricing, see page 9

➤ For upholstery pricing, see page 16

# Equipment (standard and optional overview).

Equipment	Description	Option Code	RRP ex. VAT
Exterior Features			
	Electric Parking Brake	B25	244
	Active Brake Assist	BA3	439
	Steering Wheel Heating	CK8	156
	Full-width Partition with Window	D51	77
	Navigation Package	E1K	878
	Smartphone Cradle	E1I	49
	Wireless Charging for Mobile Devices	EI0	195
	12V Plug Socket in Load Compartment	ES2	37
	Rear Parking Package	EX5	600
	Navigation Plus	EX8	1189
	Parking Package	EZ5	813
	Active Parking Assist	EX8	658
	Rear Parking Aid	F2U	327
	Windscreen Heated	F49	195
	Windscreen washer fluid reservoir, larger volume	F4W	34
	Mirror in Sunblind	F58	24
	Exterior Mirrors, Electric Folding and Adjustment	F59	143
	Automatically Dimming Interior Mirror	F71	88
	Storage Compartment on Instrument Panel	F79	97
	Chrome Interior Package	FP4	249
	Reversing Camera	FR8	327

# Equipment (standard and optional overview).

Equipment	Description	Option Code	RRP ex. VAT
Exterior Features			
	7 Speed Automatic Transmission	G7A	2048
	Thermotronic Automatic Climate Control	HH4	326
	Seat Heating for Driver and Co-Driver	H10	391
	Blind Spot Assist	JA7	439
	Traffic Sign Assist	JA9	288
	Active Lane Keeping Assist	JB4	439
	Instrument Cluster with Colour Display	JK5	233
	Front Fog Lamps	L16	162
	Speed Limit Assist	MA2	288
	Reinforced Alternator	MA8	386
	Active Safety Package	P2F	1171
	Interior Design Package	PX9	249
	Trailer Coupling Rigid Coupling Head	Q22	554
	Trailer Coupling Deep Towbar Position	Q53	597
	TIREFIT	RR7	49
	Co-Drivers Seat Foldable	S21	206
	Seat Comfort Package	SA8	408
	Two seater co-driver seat with fixed backrest	SH3	405
	Automatic Co-Driver Airbag Deactivation	SK5	49
	Co-Drivers Seat Height Adjustable	SL2	133
	Sliding Door Right	T16	329



# Equipment (standard and optional overview).

Equipment	Description	Option Code	RRP exl. VAT
Exterior Features			
	Sliding Door Right with Window	T17	487
	Sliding Door Left with Window	T20	159
	Interior Panelling Higher Execution	V23	273
	Wood Flooring	V43	292
	Load Space Interior Trim up to Roof (Wood)	VA2	329
	Hinged Windows in Sliding Doors	W46	646
	Rear Door, Double Wing, 180 degrees with window	W51	164
	Tailgate	W65	164
	Shaded Glass in the rear, Black	W70	0
	First Aid Kit	Y10	23
	Fire Extinguisher	Y16	117
	Optional/Metallic Paint		497

# Engine and gearbox.

	PRO	PRO+	PRO	PRO+
Engine specifications	110	110	112	112
Fuel	Diesel	Diesel	Diesel	Diesel
Cylinder arrangement	4, in-line	4, in-line	4, in-line	4, in-line
Cubic capacity	1,461cc	1,461cc	1,461cc	1,461cc
EU exhaust emission standard	Euro 6d	Euro 6d	Euro 6d	Euro 6d
Output, max.	95hp	95hp	116hp	116hp
Torque, max.	260Nm @ 1750rpm	260Nm @ 1750rpm	270Nm @ 1750rpm	270Nm @ 1750rpm
Fuel tank capacity	54L	54L	54L	54L
AbBlue ® capacity	17.4L	17.4L	17.4L	17.4L
6-speed manual transmission	●	●	●	●
9G-TRONIC	○	○	○	○
Driving Axle	FWD	FWD	FWD	FWD

● Standard   ○ Optional   – Not available

# Fuel consumption, performance and CO<sub>2</sub> emissions.

Evolved Model	Fuel Consumption					
	Emissions	Combined	Low-speed	Medium-speed	High-speed	Extra high-speed
Panel Van PRO	CO2 g/km	L/100km	L/100km	L/100km	L/100km	L/100km
110 L	140	5.4	5.7	5.0	4.5	6.1
112 L	138	5.3	5.5	4.9	4.4	6.1
<b>Panel Van PRO+</b>						
110 L	141	5.4	5.8	5.1	4.5	6.1
112 L	146	5.6	5.9	5.3	4.7	6.4

All figures are based on a standard specification. The choice of wheels and transmission may affect CO<sub>2</sub> emissions and corresponding Road Fund Licence. The indicated values were determined according to the prescribed measurement method – Worldwide Harmonised Light Vehicle Test Procedure (WLTP). Figures shown may include options which are not available in Ireland. Figures shown are for comparability purposes; only compare with other vans tested to the same technical procedures. Figures may not reflect real life driving results, which will depend upon a number of factors including factory-fitted options, accessories fitted (post registration), variations in weather, driving styles and vehicle load. Further information about the test used to establish fuel consumption and CO<sub>2</sub> figures can be found at <https://www.mercedes-benz.ie/vans/en/WLTP>



# Weights and payloads.

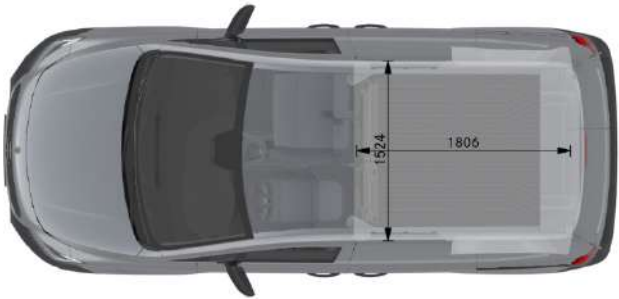
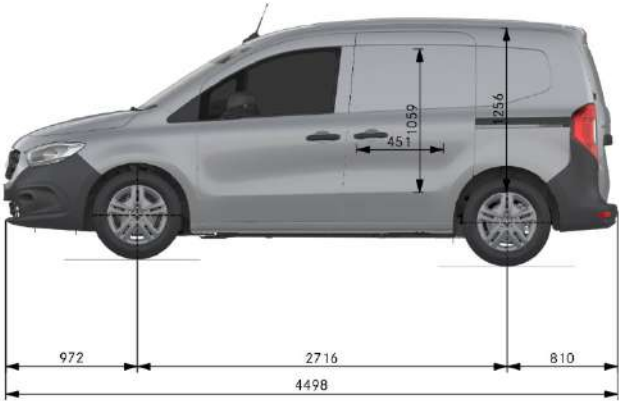
Model	Gross Vehicle Weight (Kg)	Unladen Weight (Kg)	Payload (Kg)	Gross Train Weight (Kg)
Panel Van - PRO				
110 L	2230	1595	635	3500
112 L	2235	1595	640	3500
Panel Van - PRO+				
110 L	2230	1604	626	3500
112 L	2250	1629	621	3500

Please note: The stated payload weights are correct according to type approval data. The specific payload values for Irish supplied vehicles may differ. The figure quoted only accounts for equipment which is included in the Irish product offer as standard. Please speak to a dealer for final vehicle configurations and weights once all options and accessories have been added.

# Dimensions.

**PANEL VAN  
PRO & PRO+ 110**

Wheelbase	Wheelbase length	2,716mm
	Turning circle	11.2m
	Front track width	1,585mm
	Rear track width	1,606mm
Vehicle	Length	4,498mm
	Height (unladen)	1,832mm
	Width (inc. wing mirrors)	2,159mm
	Ground clearance	176mm
Load compartment	Length	1,806mm
	Max. width	1,524mm
	Width between wheel arches	1,248mm
	Height	1,256mm
	Rear loading height (step height from ground to load floor)	589mm



# List prices.

Model	Transmission	BASE	PRO	SELECT
110 L	6-speed (manual)	€22,107	€24,636	€26,709
112 L	6-speed (manual)	-	€25,506	€27,579
110 E	6-speed (manual)	€23,331	€25,978	€27,708
112 E	6-speed (manual)	-	€26,841	€28,571

	Transmission	BASE	STYLE	PROGRESSIVE
T-Class 160D L	6-speed (manual)	€37,600*	€39,900*	€44,095*

\* Price includes VAT & VRT

K COMPACT  
L LONG  
E EXTRA-LONG

ADD €1,802 FOR AUTOMATIC TRANSMISSION FOR BASE & PRO MODELS  
ADD €1,588 FOR AUTOMATIC TRANSMISSION ON SELECT MODELS

This document is for guidance only and must be used in conjunction with a configuration tool prior to final specification decisions and vehicle quotations being prepared and accepted. List prices are quoted ex-factory & ex-VAT & VRT unless otherwise stated. Delivery charges excluding VAT will be added to model prices quoted in this document. Prices based on standard finish paint choice. Mercedes-Benz Vans IE and authorised Dealers reserve the right to alter specification and vary prices without notice. The availability of options may depend on the chosen base vehicle and other optional equipment specified, and should be confirmed with your Mercedes-Benz Vans Dealer prior to order placement.



# After sales.

## Keeping Businesses Moving.

Once you've driven away in your new Vito, the support we provide doesn't stop there. Did you know we offer a number of ways to keep your business moving long into the future? It's perhaps one of our best kept secrets...

### ServiceCare

Because you don't stop, we don't either. We offer a range of servicing options to suit every business and to keep your vehicles on the road and running at their peak performance.

- All new Mercedes-Benz Vans purchased from 1st July 2020 now come with a free Service Plan. This Service Plan will cover an A+B service and depending on mileage may extend your service intervals for up to 2 years.
- As part of this Service Plan, you will also receive a complementary Mercedes Me connect activation. This activation will allow you to stay connected with your vehicle by phone, tablet or desktop device.

[Find out more about service and repairs](#)

### MobiloVan

All Mercedes-Benz Vans come with MobiloVan, our free roadside assistance 24/7, across Europe\*. If you breakdown, have a collision or can't start your van, call MobiloVan and a technician with an average response time of under 60 minutes will arrive in a van stocked with Mercedes-Benz GenuineParts. With an average roadside repair rate of 80%, you'll be moving again in no time.

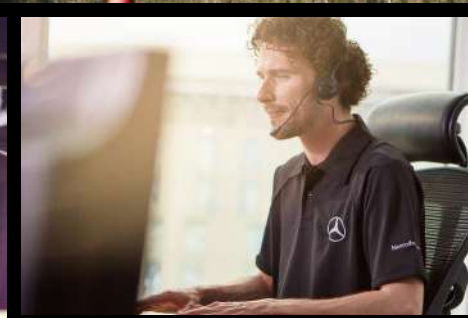
### 3 year warranty

Because we want to help keep businesses moving today and in the future, all our new vans come with a free 3 year unlimited mileage warranty.

### 24/7 Dealer network

Our nationwide network of approved Dealers is here to help your business maintain momentum.

▶ [Find your nearest Dealer here.](#)



Citan PRO

Citan PRO +

Equipment

Engine & gearbox

Fuel consumption

Weights & payload

Dimensions

List prices

Aftersales