

# A-Class Sedan



June 2023

Mercedes-Benz



# The A-Class Sedan.

	Recommended Retail Price	Maximum CO <sub>2</sub> tax applicable	Engine (cc/cylinders)	Power (kW)	Torque (Nm)	Maximum CO <sub>2</sub> emissions (g/km)
A 200	R 846,550	R 5,010	1332/4	120	250	128
A 200 d	R 916,200	R 4,099	1950/4	110	320	122

The purchase price displayed includes the price of a 5 year/100 000km Service Plan and Maintenance Plan which you shall be entitled to exclude from the purchase of your Vehicle.



Recommended retail price includes 15 % VAT and excludes CO<sub>2</sub> tax | CO<sub>2</sub> tax may vary with tyre size and is charged at R 132 (ex VAT) for each gram over 95g/km | CO<sub>2</sub> tax price displayed includes 15% VAT

# Standard Equipment

- 
- ▶ 258 Active Brake Assist
  - ▶ 270 GPS aerial
  - ▶ 286 Luggage net on driver and front passenger backrest
  - ▶ 287 Folding rear seat backrests
  - ▶ 351 Mercedes-Benz emergency call system
  - ▶ 355 Extended MBUX functions
  - ▶ 362 Communications module (LTE) for the use of Mercedes me connect services
  - ▶ 367 Preinstallation for Live Traffic Information
  - ▶ 426 8G-DCT (A 200 d)
  - ▶ 428 Steering wheel shift paddles
  - ▶ 429 7G-DCT (A 200)
  - ▶ 440 CRUISE CONTROL
  - ▶ 475 Tyre pressure monitor
  - ▶ 485 Comfort suspension
  - ▶ 521 MBUX multimedia system
  - ▶ 537 Digital radio
  - ▶ 580 THERMATIC automatic climate control
  - ▶ 668 Freight packaging with tie-down hooks
  - ▶ 859 CENTRAL MEDIA DISPLAY
  - ▶ 913 Air conditioning preinstallation (A 200 d)
  - ▶ 926 Emission control system with EU4 technology (A 200)
  - ▶ 927 EU6 emissions standard (A 200 d)
  - ▶ 942 Load Compartment package
  - ▶ 971 Diesel particulate filter (A 200 d)
  - ▶ 14U Smartphone integration
  - ▶ 16U Apple CarPlay
  - ▶ 17U Android Auto
  - ▶ 33U Remote Services Plus (A 200)
  - ▶ 37U Remote Services Advanced (A 200 d)
  - ▶ 51U Roof liner in black fabric
  - ▶ 72B USB package Plus
  - ▶ 73B Stowage compartment in centre console with retractable cover
  - ▶ 79B Preinstallation for digital radio
  - ▶ B51 TIREFIT
  - ▶ B59 DYNAMIC SELECT
  - ▶ U12 Velour floor mats
  - ▶ U35 12 V socket in load area
  - ▶ U54 Torsion-beam axle
  - ▶ U59 Seat Comfort package
  - ▶ U79 BlueTEC diesel emission control system including AdBlue® reservoir (A 200 d)
  - ▶ PDA Advanced package
    - ▶ 608 Adaptive Highbeam Assist
    - ▶ 631 LED High Performance headlamp
  - ▶ P44 Parking Package with reversing camera
    - ▶ 218 Reversing camera
    - ▶ 235 Active Parking Assist with PARKTRONIC
  - ▶ P49 Mirror package
    - ▶ 252 Automatically dimming rear-view mirror
    - ▶ 500 Electrically folding exterior mirrors
  - ▶ U22 4-way lumbar support
  - ▶ P54 GUARD 360 ° Vehicle protection
    - ▶ 551 Anti-theft alarm system with preinstallation for collision detection
    - ▶ 882 Interior monitoring system
  - ▶ U62 Light and Sight package
    - ▶ 345 Windscreen wipers with rain sensor
    - ▶ 543 Sun visor with illuminated vanity mirror



# Progressive Line (P59) Standard



45.7 cm (18") 5-twin-spoke light-alloy wheels (R31 available at extra charge)



ARTICO man-made leather / Bertrix fabric black (311A) | Comfort Seats (7U2) | Roof liner in black fabric (51U)



Leather multifunction sports steering wheel (L3E)



Trim in dark carbon-fibre look (52H)



Double cup holder (310)



43.2 cm (17") 5-twin-spoke light-alloy wheels (R62)

# AMG Line (950) R 29,000



Comfort suspension with ride-height lowering(677) | AMG Bodystyling (772)



ARTICO man-made leather upholstery / MICROCUT microfibre black (651A) | Sports seats (7U3) | Roof liner in black fabric (51U)



Multifunction sports steering wheel in nappa leather (L5C)



AMG floor mats (U26)



45.7 cm (18") AMG 5-twin-spoke light-alloy wheels (RQS)

# Packages.

\*Prices displayed include VAT and are subject to change without any prior notice

CODE	DESCRIPTION	A 200	A 200 d	PR ICE
275	Memory seat package (OICW U22) ► Power front left seat with memory function (241) In conjunction with PDD	● ○	● ○	R 12,500
23P	Driving Assistance Package (OICW P49/275) ► PRE-SAFE® system (299) ► Active Distance Assist DISTRONIC (233) In conjunction with PDC	● ●	● ●	R 42,171 R 33,649
P34	Leather package (OICW 7U3/873   NICW 950/PDC/PDD) ► Leather - black (211A) ► Trim in dark carbon-fibre look (52H) or [H15/H23/H44]	●	●	R 22,000
P55	Night package (OICW [R31/RQT/RUH]) ► Heat-insulating dark-tinted glass (840) ► 45.7 cm (18") 5-twin-spoke light-alloy wheels (R31) or (RQT/RUH) In conjunction with 950+RQT/RUH	● ●	● ●	R 12,900 R 6,400
PBG	MBUX Navigation Premium (OICW PDC/PDD) ► Preinstallation for Navigation Services (01U) ► Hard-disc navigation (365)	●	●	
PDB	Advanced Plus package ► Rear armrest (400) ► All-digital instrument display (458) ► Adaptive Highbeam Assist (608) ► Ambient lighting (877) ► KEYLESS-GO (889) ► Wireless charging system for mobile devices in the front (897) ► 4-way lumbar support (U22)	●	●	R 30,000

# Packages.

\*Prices displayed include VAT and are subject to change without any prior notice

CODE	DESCRIPTION	A 200	A 200 d	PR ICE
PDC	Premium package			
	▶ Blind Spot Assist (234)			
	▶ Rear armrest (400)			
	▶ All-digital instrument display (458)			
	▶ THERMOTRONIC automatic climate control (581)			
	▶ Advanced Sound System (853)			
	▶ Ambient lighting (877)			
	▶ KEYLESS-GO (889)	●	●	R 65,000
	▶ Wireless charging system for mobile devices in the front (897)			
	▶ Mirror package (P49)			
	▶ MBUX Navigation Premium (PBG)			
	▶ MBUX augmented reality for navigation (U19)			
	▶ 4-way lumbar support (U22)			
	▶ Door sills with "Mercedes-Benz" lettering, illuminated and with exchangeable cover (U45)			

# Packages.

\*Prices displayed include VAT and are subject to change without any prior notice

CODE	DESCRIPTION	A 200	A 200 d	PR ICE
PDD	<div>Premium Plus package (OICW 950, 275)<ul style="list-style-type: none"><li>▶ Driver's seat, electrically adjustable with memory function (275)</li><li>▶ Rear armrest (400)</li><li>▶ Panoramic sliding sunroof (413)</li><li>▶ All-digital instrument display (458)</li><li>▶ Head-up display (463)</li><li>▶ THERMOTRONIC automatic climate control (581)</li><li>▶ Adaptive Highbeam Assist (608)</li><li>▶ MBUX Interior Assistant (77B)</li><li>▶ Advanced Sound System (853)</li><li>▶ Ambient lighting (877)</li><li>▶ KEYLESS-GO (889)</li><li>▶ Wireless charging system for mobile devices in the front (897)</li><li>▶ Parking Package with 360° camera<ul style="list-style-type: none"><li>▷ Blind Spot Assist (234)</li><li>▷ Active Parking Assist with PARKTRONIC (235)</li><li>▷ 360° camera (501)</li></ul></li><li>▶ Mirror package (P49)</li><li>▶ MBUX Navigation Premium (PBG)</li><li>▶ MBUX augmented reality for navigation (U19)</li><li>▶ 4-way lumbar support (U22)</li><li>▶ Door sills with "Mercedes-Benz" lettering, illuminated and with exchangeable cover (U45)</li></ul></div>	●	●	R 119,000





digital white (144U), 48.3 cm (19") AMG multi-spoke light-alloy wheels (RUH), Night Package (P55), AMG Line (950), Premium Plus Package (PDD)

# Optional Equipment.

\*Prices displayed include VAT and are subject to change without any prior notice

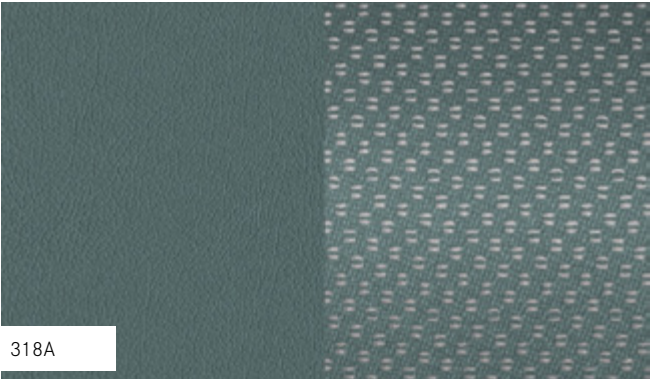
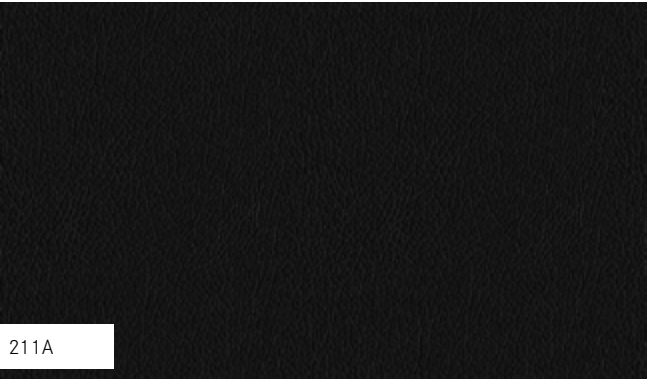
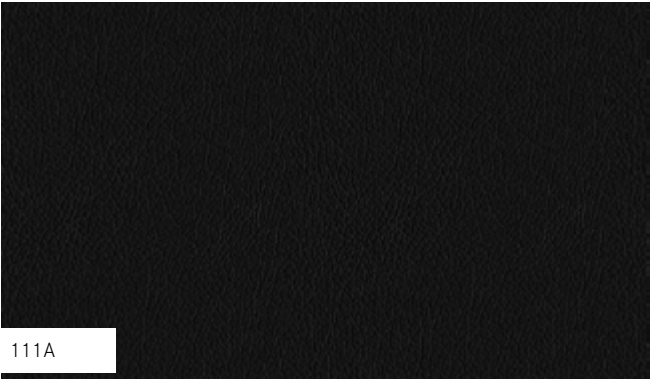
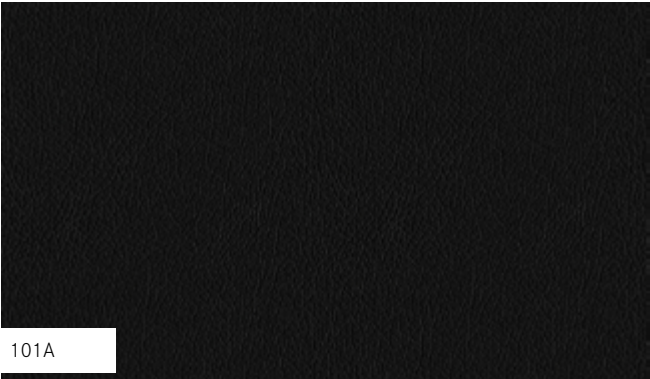
CODE	DESCRIPTION	A 200	A 200 d	PR ICE
207	Active Distance Assist DISTRONIC (OICW 50B)	●	●	R 9,200
243	Active Lane Keeping Assist (NICW 233/266/546/K33/K34/PAD)	●	●	R 8,000
413	Panoramic sliding sunroof (NICW 58U   OICW 51U) In conjunction with PDD	● ○	● ○	R 16,400
459	Suspension with Adaptive Damping system (NICW 485/677/U54   OICW 213/U55) In conjunction with 950	● ●	● ●	R 24,000 R 24,000
513	Traffic Sign Assist (NICW 504)	●	●	R 5,200
550	Trailer coupling with ESP® trailer stabilisation (NICW 653A/H87/PDK/U15/U66/B26   OICW U26)	●	●	R 11,800
581	THERMOTRONIC automatic climate control (NICW 580) In conjunction with PDC/PDD	● ○	● ○	R 9,700
58U	Roof liner in crystal grey fabric (NICW 105A/51U/950/P39/PDD)	○	○	
641	MULTIBEAM LED In conjunction with PDA In conjunction with PDD	● ○	● ○	R 6,400
873	Heated front seats (NICW 401)	●	●	R 5,700
7U4	Sports seats (NICW 101A/105A/311A/318A/7U2/ 401/409/555   OICW 286) In conjunction with 950	● ○	● ○	R 5,000
101A	ARTICO man-made leather - black (NICW 950/P39/P34/PDD )	●	●	R 5,000
105A	ARTICO man-made leather - macchiato beige / black (NICW 950/P39/P34/PDD)	●	●	R 5,000
111A	ARTICO man-made leather - black (NICW 950/P39/P34/PDD)	●	●	R 5,000
158A	ARTICO man-made leather - sage grey / black (OICW 7U3 NICW P34/P39)	●	●	R 5,000
211A	Leather - black (NICW 7U2/H87/PDK/U15/U66/Y05   OICW 7U3/7U4/P34/P39/U26)	○	○	
318A	ARTICO man-made leather / Bertrix fabric - sage grey / black (NICW 950/P39/P34/PDD )	○	○	
654A	Fabric/man-made leather/microfibre - brown (OICW 7U3+950)	○	○	
H15	Black open-pore linden wood trim (NICW 52H/H23/653A/H87/PDK/U15/U66/H44/H95   OICW U26)	●	●	R 4,400

# Optional Equipment.

\*Prices displayed include VAT and are subject to change without any prior notice

CODE	DESCRIPTION	A 200	A 200 d	PR ICE
H44	Light longitudinal-grain aluminium trim (NICW 52H/H23/653A/H87/PDK/U15/U66/H15/H95   OICW U26 In conjunction with P34+950	● ○	● ○	R 2,700
R66	run-flat tyres (NICW B51/RUH/RVZ   OICW RQQ)	○	○	
U10	Automatic front passenger airbag deactivation	●	●	R 2,000

# Interior





# Wheels



25R  
43.2 cm (17") 10-spoke light-alloy wheels  
R5,310



RUH  
48.3 cm (19") AMG multi-spoke light-alloy wheels  
In conjunction with 950 or 950+P55  
R 15,100



R31  
45.7 cm (18") 5-twin-spoke light-alloy wheels  
In conjunction with P55  
In conjunction with P59  
R 0  
R 12,400



RVZ  
48.3 cm (19") AMG multi-spoke light-alloy wheels  
In conjunction with 950  
R 12,400



RQT  
45.7 cm (18") AMG 5-twin-spoke light-alloy wheels  
In conjunction with P55+950  
In conjunction with 950  
R 0  
R 3,200

\*Prices displayed include VAT and are subject to change without any prior notice

# Paint.

\*Prices displayed include VAT and are subject to change without any prior notice

## Non- Metallic Paint - Available at no extra cost



## Metallic Paint - R 5,200





# PremiumDrive.

The Customer has an opportunity to purchase the PremiumDrive Platinum or PremiumDrive Lite plan within the first year of vehicle registration or before their first service occurs.

## **PremiumDrive Platinum**

5 Years and/or 100 000 km Service and Maintenance (whichever occurs first)

## **PremiumDrive Lite**

3 Years and/or 60 000 km Service and Maintenance (whichever occurs first)

The New PremiumDrive Platinum and PremiumDrive Lite options are effective 01/02/2022

Additional Service and Maintenance Top-up plans will be communicated in the future.

For Terms and Conditions, refer to the PremiumDrive Platinum and PremiumDrive Lite booklets available on the [Mercedes-Benz Website](#)

# Why Mercedes-Benz Financial Services?

Mercedes-Benz Financial Services is a captive Finance House and also offers approved insurance solutions.

We are able to offer our customers a variety of unique products, including a Guaranteed Future Value with Agility, maximum flexibility in terms of mobility, tailor made insurance offers and unmatched service.

We offer streamlined credit decisions on new application and refinancing arrangements or balloon payments. Because we focus solely on Mercedes-Benz vehicles, we specialise in ensuring that you have exclusive finance options to suit your exclusive vehicle as well as your budget.

Who better to Finance and Insure your vehicle than the people who built it?

## For Finance or Application Queries:

0861 623 701 | [financemeza@mercedes-benz.com](mailto:financemeza@mercedes-benz.com)

## General Customer Enquiries:

0861 324 653 | [mbfsenquiries@mercedes-benz.com](mailto:mbfsenquiries@mercedes-benz.com)

Visit our [website](#) for more information.

Guaranteed Future Value (GFV) is subject to vehicle maintenance in accordance with the manufacturer's specification, Fair Wear and Tear conditions and Kilometre Restrictions. Retain and/or Return features are subject to Fair Wear and Tear conditions and Kilometre Restrictions. A copy of the standards will be provided to you with your Agility Finance documents or, is available upon request. Agility Finance is restricted to approved customers of Mercedes-Benz Financial Services South Africa

## Term

### Term:

Agility customers enjoy the choice of a minimum term of 12 months to a maximum term of 60 months.

## Mileage

### Mileage:

Agility customers can choose from a variety of mileage options to suit their specific driving requirements.

## GFV

### Guaranteed Future Value (GFV):

Mercedes-Benz South Africa guarantees the future value of your vehicle. This means that Agility customers face no risk regarding the depreciation of their vehicle.

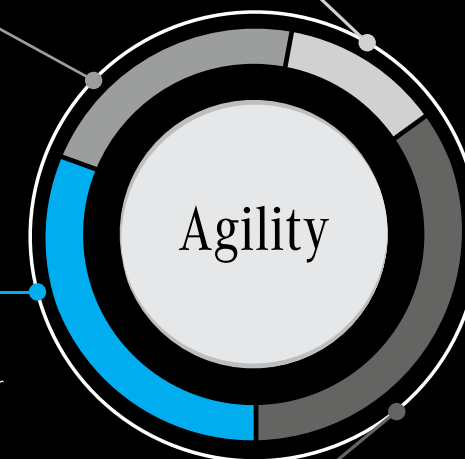
## Flexibility

### Flexible End of Terms Options:

**Renew:** Replace your vehicle with a new model

**Retain:** At the end of the term, simply pay or refinance the GFV amount and take ownership of the vehicle.

**Return:** Hand back the vehicle (in line with the Fair Wear and Tear Policy).





# Approved Insurance Solutions

Did you know?

We've partnered with three of South Africa's **established Short Term Insurance Companies** to ensure you get the best suited Comprehensive Insurance Cover for your Mercedes-Benz.

## Mercedes-Benz Financial Services commits to our promise of Service Excellence.

- We are committed to a luxury brand experience for our customers
  - Accidental repairs to your vehicle are done:
    - Through our **Approved Repair Facilities**, ensuring that your vehicle is repaired to manufacturer specifications, while within warranty
    - Using **Genuine Mercedes-Benz Parts** while your vehicle is still within warranty
    - 24-hour **Accident Service Support** AND **Emergency Roadside Assistance**
- It pays to **combine**
- **BOOST:** Finance & Insure through MBFS and get a guaranteed reduction on your finance interest rate.
  - Pay the excess on your claim without affecting your personal finances negatively. **Ask us how?**
  - Combine your other branded, non-branded vehicles and household contents into one Comprehensive Insurance Policy and **qualify for a discounted premium.**

For Insurance Queries:

012 471 4373 | [insureme@mercedes-benz.com](mailto:insureme@mercedes-benz.com)

Visit our [website](#) for more information.

Ask us for a  
non-obligatory  
quote today.



Terms and conditions apply | Provided by Mercedes-Benz Financial Services (Pty) Ltd, an Authorised Financial Services Provider (FSP 18 604) and Registered Credit Provider (NCRCP80). Insurance is underwritten by a select panel of underwriters. Please refer to the relevant insurance quotation and / or policy wording for full details.



Please note: Changes may have been made to the product since this brochure was published (01.06.2023). The manufacturer reserves the right to make changes to the design, form, colour and specification of any Mercedes-Benz vehicle during the lifecycle period, provided these changes, while taking into account the interests of the vendor, and is communicated to the purchaser. The illustrations may show accessories and items of optional equipment which are not part of standard South African specification and will therefore not be available to the South African purchaser. The manufacturer is under no obligation to make such accessories and items of optional equipment available to the purchaser. Colours may differ slightly from those shown in the brochure, owing to the limitations of the electronic process.

**Brochure content valid for Model Year 804. Vehicle specifications and prices subject to change without prior notice.**