



1 9 9 8 M E R C U R Y M Y S T I Q U E



1 9 9 8 M E R C U R Y M Y S T I Q U E

1 9 9 8 M E R C U R Y M Y S T I Q U E



Imagine yourself in a Mercury



1 9 9 8 M E R C U R Y M Y S T I Q U E

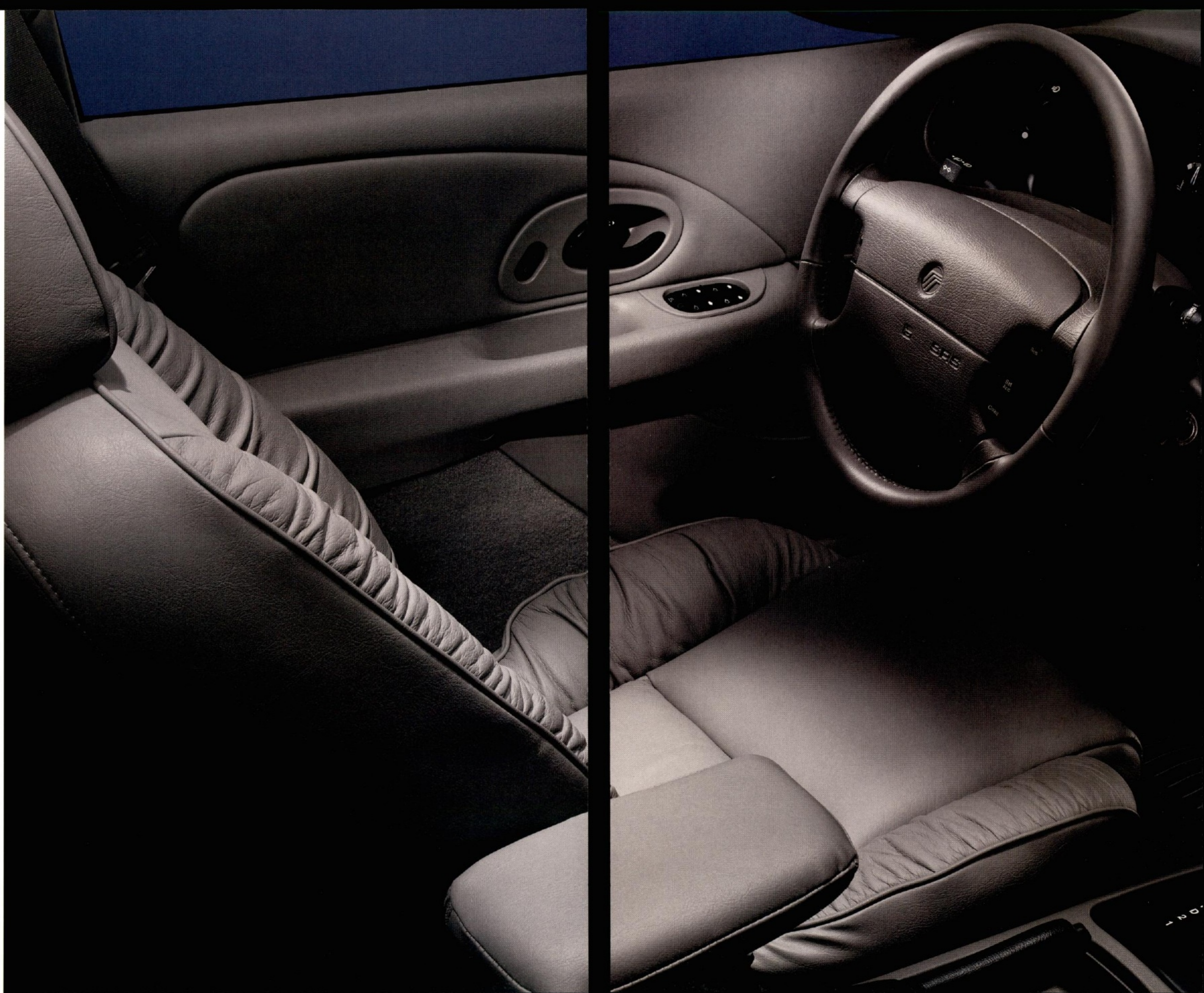
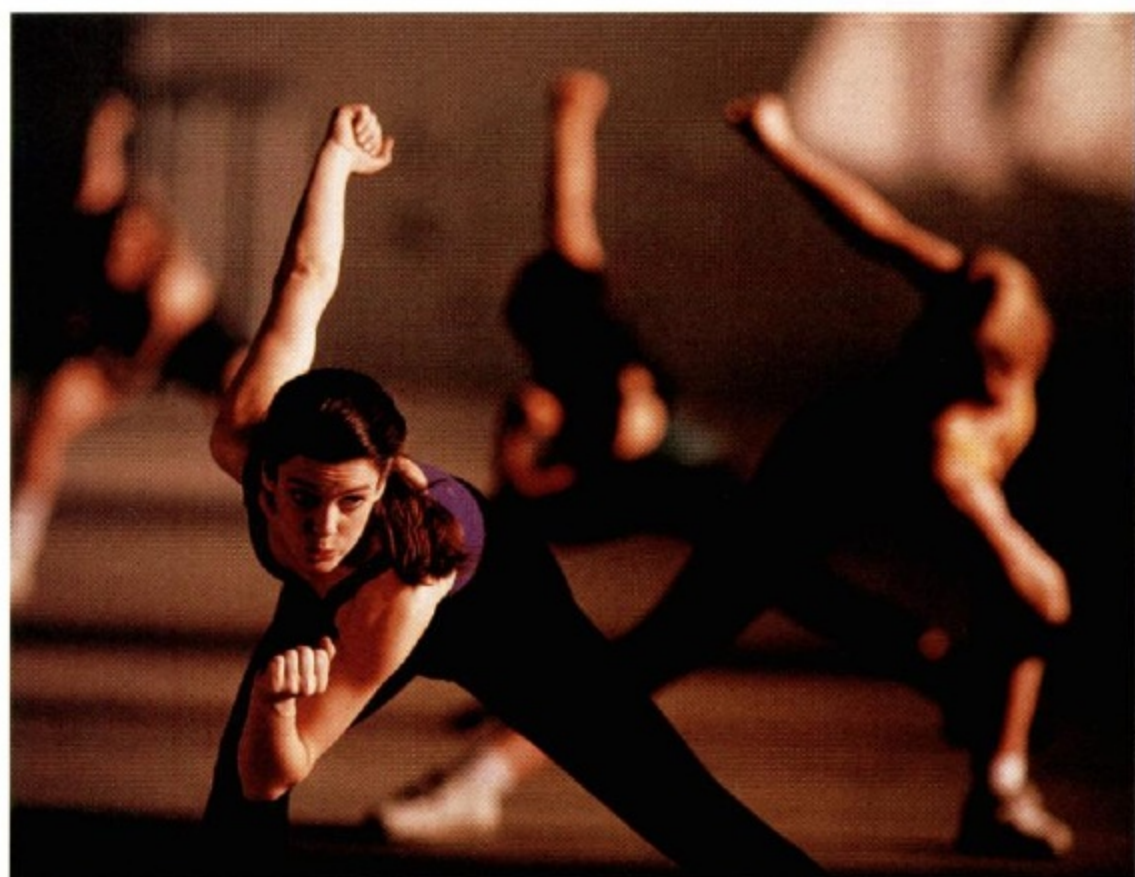




■ The road may never
feel the same again.

Mystique has the captivating ability to bring out the driver in you. You'll feel a charge of adrenaline as you approach a stretch of open highway. Your heart will skip a beat as you take a sharp corner. A winding, corkscrew road will afford new challenges you'll enthusiastically welcome. This is where driving exhilaration begins.

■ Life. The more you put into it,
the more you get out of it.



The same is true of your car.



Controls for the 10-way power seat (standard on LS) are conveniently located on the side of the seat and adjust for fore/aft, recline/tilt height. It's easy to find your level of comfort.

For maximum comfort, the steering column can be easily tilted to your optimal position with the touch of a lever.



Safety belt height adjusters slide up and down to help provide a comfortable fit for driver and front passenger.



Another convenient feature is the 60/40 split-fold rear seat (standard on GS & LS). It can be folded down to accommodate extra-long loads like skis or sports equipment.



Discover an interior that's versatile, flexible and remarkably well appointed. Its adaptability is designed to match your lifestyle. Solar tint glass, rear seat heat ducts, illuminated switches and wood-style trim surround you. For the ultimate in luxury, equip Mystique LS with fine leather-trimmed seats.

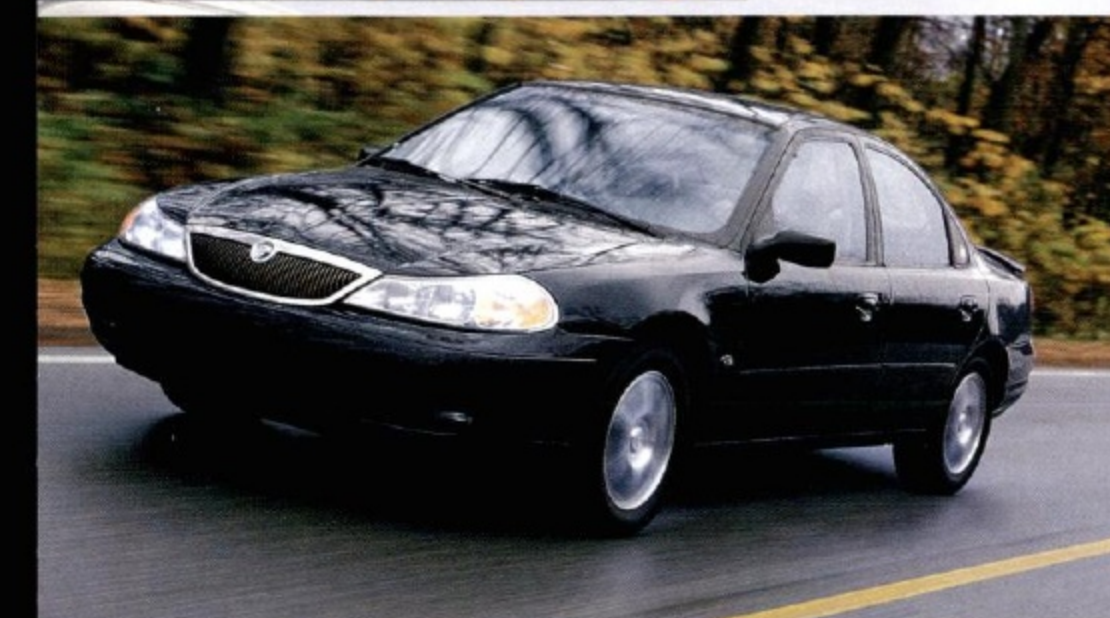




■ In other words, a true driver's car.



A scenic, twisty stretch of road. This is where you'll come to appreciate the remarkable driving dynamics of your Mystique. Its advanced Quadralink rear suspension along with an improved front suspension provides ride stability, comfort and handling responsiveness. The vehicle's front subframe is formed from a single U-shaped steel tube and is joined by a welded cross member to enhance the car's rigidity.



Just wait until you get your hands on the more refined, restyled Mystique.

Mystique has a well-earned reputation for pleasing critics and driving enthusiasts alike. However, our engineers weren't about to rest on their laurels. For 1998 Mystique has been further enhanced to be even more impressive. The refined suspension system heads the list of improvements included to help deliver impressive ride and handling characteristics. Now it's your turn to open one up.



“Mystique sets the standard for driving excellence.”

AUTOMOBILE MAGAZINE



Mystique wipers include intermittent wiping to improve visibility in everything from a light mist to a heavy downpour.

Side window demisters help clear your view in cold or rainy weather by blowing heated or air-conditioned air over the side windows.

Brake shift interlock prevents shifting the transmission out of park unless the brake pedal is depressed.

Front lap safety belts move with the seat, helping to provide proper belt placement regardless of seat position. A rear center lap/shoulder safety belt is new for this year.

Driver's safety-belt grabber is designed to grab and hold front safety belt during an impact or emergency braking situation to limit belt slippage.

Mystique features seats specifically designed to help prevent occupants from sliding forward under safety belts in a frontal collision.

Heavy gauge steel beams are mounted inside each door for additional protection. For dynamic side-impact protection, a patented door trim safety system, which utilizes energy-absorbing foam, is also included.

Both front and rear bumpers are designed to help absorb 5-mph impacts to minimize vehicle damage.



In certain moderate-to-severe frontal collisions, both air bags will deploy, providing added protection to the driver and front passenger. *(Always wear your safety belt and seat children in the rear seat.)*

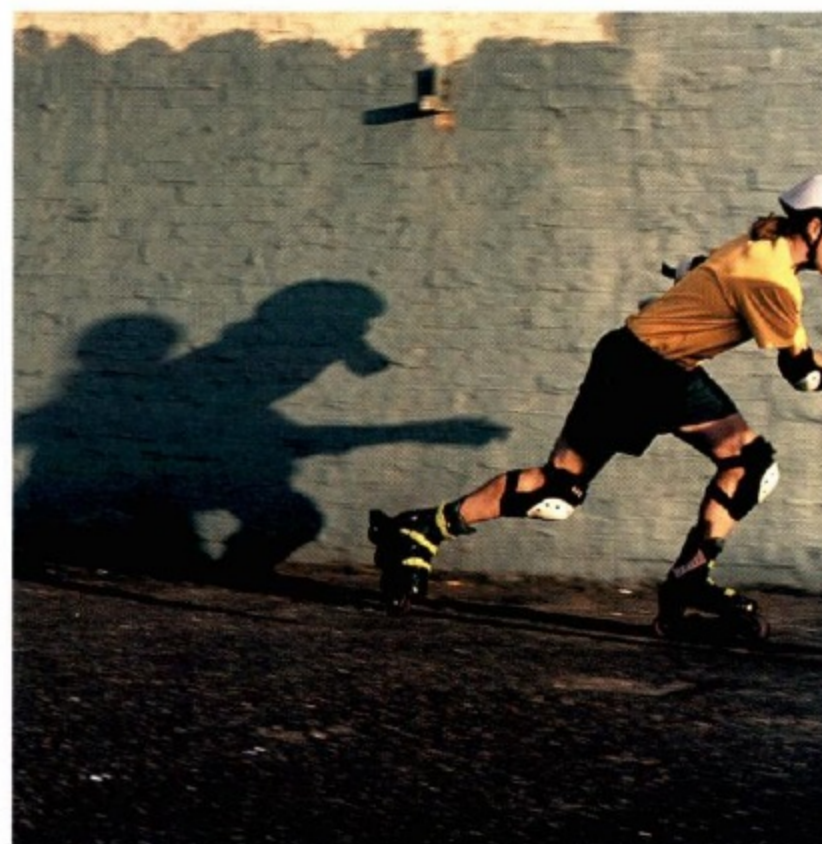
Uniquely designed cowl-top grille and "A" pillar water channel moldings improve visibility by helping keep water displaced by the wipers from spreading over the windshield and side glass.

When activated, childproof safety locks keep children in the rear seat from opening doors from inside the car while parents can still open doors from the outside.

A rigid body structure serves as a protective "safety cell" that will absorb impacts to protect occupants in a frontal, offset, side or rear collision, as well as in a rollover accident. It also helps absorb low-speed impacts without causing substantial structural damage.

For your child's safety and your convenience, an integrated rear child safety seat is available on Mystique GS and LS. *Please be sure all children are properly fastened in child safety seats as required by local law.*

Naturally, safety and security come standard...



Mystique LS comes with SECURILOCK, a passive anti-theft system which includes a coded key. If a non-encoded key is used or hot-wiring is attempted, the engine will not start.



...but you can still cut loose with a few options.



An available remote keyless entry system includes two remote transmitters that allow you to unlock or lock all doors and open the trunk from up to 33 feet away. A panic button will sound the horn and flash exterior lights when engaged.

Invite the sun, the moon and fresh air along for the ride. The power moonroof(1) opens and closes at the touch of an overhead tactile switch.

An electronic AM/FM stereo radio with cassette player (not shown) is standard on LS and available on other models.

This system can be upgraded to a Premium Sound System with 80 watts of power and Premium speakers. Also available is a CD radio with Premium Sound that includes scan and play(2).

For cassette and CD capability, a dealer-

installed CD changer(3) can be added to the electronic AM/FM stereo cassette radio.

Controls for power windows(4) are conveniently located at your side. They include an express-down driver's side feature. And they're

illuminated, which makes them easy to find and operate in the dark.

An optional power antenna(5) automatically retracts when the sound system is not in use. Standard on LS.

An optional air-conditioning system(6)

helps you keep your cool and operates free of ozone-depleting CFCs.

With its aerodynamic design, a rear spoiler(7) gives Mystique a sleek, sporty look. It's available as an option on GS and LS models.



14" deluxe wheel covers; standard on Mystique.

14" simulated bolt-on wheel covers; standard on Mystique GS.

15" 7-hole machined alloy wheels; optional on Mystique GS.

15" 6-spoke polished machined alloy wheels; standard on Mystique LS and GS Spree, optional on Mystique GS.

The sporty Spree Edition will accommodate your active lifestyle.

It includes 15-inch tires with 6-spoke polished machined alloy wheels, leather-wrapped steering wheel and shifter, fog lamps, special floor mats and special Spree badging. A spoiler can also be added to your Spree.



Specifications

ENGINE	GS	LS
Type	16-valve DOHC Zetec I-4	24-valve DOHC Duratec V-6
Construction	Cast-iron cylinder block with aluminum heads	Aluminum block 60° modular with aluminum heads
Displacement	2.0 liters	2.5 liters
Horsepower (SAE net)	125@5500 rpm	170@6250 rpm
Torque (SAE net)	130 lbs-ft @ 4000 rpm	165 lbs-ft @ 4250 rpm
Oil capacity (with filter change)	4.5 qts	5.5 qts
Compression ratio	9.6:1	9.7:1
Fuel delivery	Sequential multi-port electronic fuel injection	
Engine control	.EEC-V Electronic Engine Control	

BRAKES	GS	LS
Manual Transaxle	10.24-inch disc/8.00-inch drum	10.24-inch disc/9.92-inch disc
Automatic Transaxle	10.24-inch disc/8.00-inch drum	10.24-inch disc/9.00-inch drum

CAPACITIES	GS	LS
Fuel tank	14.5 gals	14.5 gals
Trunk	13.9 cu ft	13.9 cu ft

TRANSAXLE	GS	LS
Manual	Fully synchronized, including reverse, 5-speed overdrive with ultra-compact design, new cable system, low internal friction and two-piece die-cast aluminum case	
Automatic	4-speed electronic automatic overdrive with lock-up torque converter, shift sensors, automatic overdrive lockout switch and brake/shift interlock	

STEERING	GS	LS
Type	Power-assisted rack-and-pinion with 14.5:1 ratio	

SUSPENSION	GS	LS
Front	Independent MacPherson strut-type with lower A-arms and hydromount connecting bushings, strut-mounted coil springs and stabilizer bar. All steering and suspension components are connected to a rubber-mounted subframe	
Rear	Quadralink fully independent suspension, strut-mounted coil springs, passive rear-wheel steering and rear stabilizer bar attached to a rigidly mounted subframe	

DIMENSIONS (IN INCHES)	GS	LS
Wheelbase	106.5	106.5
Track, front/rear	59.2/58.5	59.2/58.5
Length	184.8	184.8
Height	54.5	54.5
Width	69.1	69.1
Headroom, front/rear	39.0/36.8	39.0/36.8
Legroom, front/rear	42.4/34.84	42.4/34.84
Shoulder room, front/rear	53.9/53.3	53.9/53.3

SAFETY AND SECURITY FEATURES	MYSTIQUE	GS	LS
Dual air bag supplemental restraint system	STD	STD	STD
Height-adjustable front shoulder safety belts	STD	STD	STD
Seat-mounted front lap safety belts	STD	STD	STD
3-point lap/shoulder safety belt for rear center occupant	STD	STD	STD
Safety cell body structure	STD	STD	STD
Driver's safety belt grabber	STD	STD	STD
Windshield water management system	STD	STD	STD
Rear door child safety locks	STD	STD	STD
Brake/shift interlock (automatic only)	STD	STD	STD
5-mph bumpers—front/rear	STD	STD	STD
SECURILOCK™ Anti-theft System			STD
4-wheel Anti-lock Braking System (ABS)	OPT	OPT	OPT
Integrated child safety seat		OPT	OPT
Remote Keyless Entry System with panic button		OPT	OPT



Hmmm... Moonlight Blue Clearcoat Metallic?
... but then again...



CommitmentSM

ROADSIDE ASSISTANCE.

Throughout the three-year/36,000-mile warranty period, you get 24-hour, seven-day-a-week coverage for towing, fuel delivery, jump-starts, tire changing and lock-out assistance.

MERCURY VEHICLE WARRANTY.

As part of the Mercury Commitment, you receive the Mercury Bumper to Bumper limited warranty, covering your automobile for three years or 36,000 miles with no deductible. You also receive a corrosion protection limited warranty providing coverage for five years with unlimited mileage and no deductible. Ask your Mercury dealer for complete details and a copy of the limited warranties.

SPECIAL DELIVERY PROCESS.

Prior to delivery, your dealer's service department thoroughly prepares your



vehicle. At delivery, the dealership sales staff provides a customer delivery meeting, service department tour, checklist review and other services.

MERCURY CUSTOMER ASSISTANCE CENTER.

If you have questions about your Mercury vehicle or the Mercury Commitment, you're invited to contact your selling dealer. Or if you wish, feel free to call our Customer Assistance Center at 1-800-392-3673.

OWNER IDENTIFICATION CARD.

You'll receive a Mercury Commitment ID card for your wallet. You'll want to keep it handy because it includes the Mercury Commitment hotline numbers for customer service and roadside assistance.

SOUND SYSTEMS	MYSTIQUE	GS	LS
Electronic AM/FM stereo radio	STD	STD	
Electronic AM/FM stereo radio with cassette player	OPT	OPT	STD
Electronic AM/FM stereo radio with cassette player, Premium Sound System		OPT	OPT
High-Level Audio System with AM/FM stereo compact disc radio		OPT	OPT
Power antenna		OPT	STD
Remote-controlled 6-disc CD changer	DLR	DLR	DLR

WHEELS AND TIRES	MYSTIQUE	GS	LS
P185/70R14 BSW tires with 14-inch deluxe wheel covers	STD		
P185/70R14 BSW tires with simulated bolt-on wheel covers			STD
P205/60R15 BSW tires with 15-inch 7-hole machined alloy wheels		OPT	
P205/60R15 BSW tires with 6-spoke polished machined alloy wheels (Standard on GS Spree)		OPT	STD

PREFERRED EQUIPMENT PACKAGES	MYSTIQUE	GS	LS
To make ordering easy, we've grouped certain options into the Preferred Equipment Packages listed below, and priced them to offer sticker price savings over ordering these items individually.			

OPTIONAL SERIES	MYSTIQUE	GS	LS
	360A	371A	381A
Rear defroster	OPT	•	STD
Electronic AM/FM stereo radio with cassette	OPT	•	STD
CFC-free air conditioner	OPT	•	•
Power door locks		•	•
Power windows		•	•
Light group		•	•
Fingertip speed control		•	•
Remote Keyless Entry System			•
Leather-wrapped steering wheel			•

GS SPREE PACKAGE
15-inch alloy wheels • P205/60R15 tires • Fog lamps • Leather-wrapped steering wheel • Leather-wrapped shifter • "Spree" badging • Floor mats

PRODUCT CHANGES
Following publication of this brochure, certain changes in standard equipment, options, prices and the like, or product delays may have occurred which would not be included in these pages. Your Mercury dealer is your best source for up-to-date information.
Lincoln-Mercury Division reserves the right to change product specifications at any time without incurring obligations.

¹Under normal driving conditions with routine fluid/filter changes.
EPA Statement: 1998 EPA mileage estimates were unavailable when this brochure was printed. The 1998 Mercury Mystique, however, should post good mileage figures. Ask your Mercury dealer for the latest information.
Option Availability: Options shown or described in this brochure are available at extra cost and may be offered only in combination with other options or subject to additional ordering requirements or limitations.

Based on official AAMA specifications.
For more information on available accessories, please visit your local Mercury dealer.

STD = Standard; OPT = Optional Feature; DLR = Dealer-Installed Accessory; • = Included with Package




Ford Credit offers a wide variety of financing and leasing programs to qualified buyers that can be arranged right at the dealership. Ask your dealer for the facts on these programs, or call Ford Credit Customer Service at 1-800-727-7000.

For more information via the Internet enter <http://www.mercuryvehicles.com>



Imagine yourself in a Mercury

Mercury 

LITHO IN USA (650,000) 1-97 P-0210
Buckle up—together we can save lives.