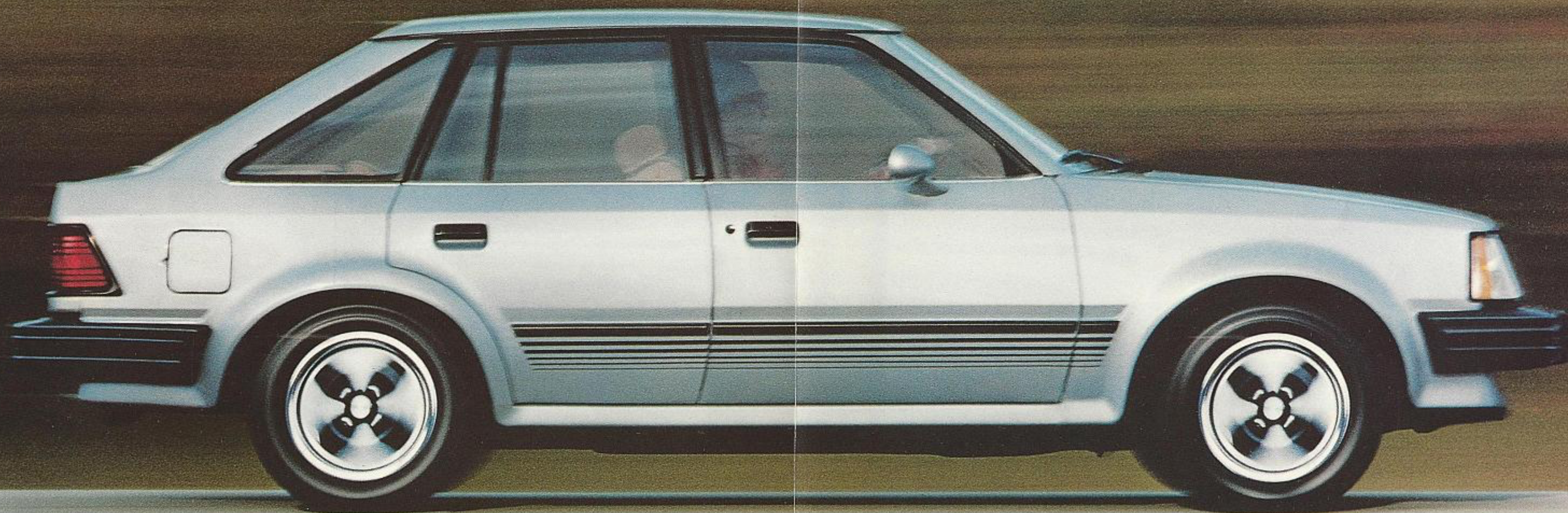


MERCURY LYNX LTS '83





Mercury Lynx Luxury Touring Sedan in
Pastel Academy Blue Metallic.

POLISHED PERFORMER

LTS. That's short for a Lynx long on comfort and responsiveness. The translation: Luxury Touring Sedan. The reality: a look and feel equally at home on cross-country treks or neighborhood errands.

This is a Lynx unlike any other. A functional five-door that sports a Clearcoat

metallic finish in a choice of four exterior colors, special blackout accent trim and dual color-keyed remote-control mirrors.

Lynx Luxury Touring Sedan pulls no punches below the beltline either. The tires are road-gripping Michelin TRX steel-belted radials. They're mounted on TR-Sport steel

wheels and work "hand in driving glove" with a standard handling suspension to make city streets as much fun as mountain roads.

Now examine the high-tech hardware responsible for the Luxury Touring Sedan's quick reactions. Up front is a standard 1.6 liter Higher Output overhead cam engine, or

you can order the optional electronically fuel-injected 1.6 liter engine. Each is connected to a standard five-speed manual transaxle that puts this power to the pavement via the front wheels. The steering is rack-and-pinion, the suspension fully independent at all four wheels. The results? Riding

comfort, plus road rally reflexes.

Now relax... in an interior you might mistake for a sporty two-door's. It could be the handsome cloth-covered reclining front seats, the four-spoke sport steering wheel or the full instrumentation group. No matter. Once inside you'll begin to appreciate the

admiring glances and the remarkable response that come standard with every Lynx Luxury Touring Sedan.

MERCURY. THE SUBSTANCE SHOWS.



Above: Lynx Luxury Touring Sedan interior with cloth-covered reclining individual seats and vinyl-covered folding center armrest. Shown in Desert Tan.

LUXURY TOURING SEDAN SPECIFICATIONS

| | |
|-----------------------------|--------|
| Wheelbase | 94.2" |
| Turning Diameter | 35.7' |
| Overall Length | 163.9" |
| Overall Height | 53.3" |
| Overall Width | 65.9" |
| Tread—Front | 54.7" |
| —Rear | 56.0" |
| Headroom—Front | 38.1" |
| —Rear | 37.4" |
| Legroom—Front | 41.5" |
| —Rear | 35.0" |
| Shoulder Room—Front | 51.4" |
| —Rear | 51.1" |
| Hiproom—Front | 52.2" |
| —Rear | 44.4" |
| Luggage Capacity* (Cu. Ft.) | 26.1 |
| Fuel Capacity (Gals.) | 13.0 |
| Curb Weight (Lbs.) | 2120 |

*With rear seat folded down.

SELECTED STANDARD EQUIPMENT

- Clearcoat metallic paint • Blackout accent trim • Cloth-covered low-back reclining seats • Higher Output 1.6 liter engine • 5-speed manual transaxle • Handling suspension • TR-Sport steel wheels and trim rings • 165/70R365 Michelin TRX steel-belted radial black sidewall tires • Instrumentation group • AM radio (may be deleted for credit) • Dual color-keyed remote-control mirrors • Sport steering wheel

SELECTED OPTIONS

- 1.6 liter EFI engine • Automatic transaxle • Power brakes • Front and rear bumper guards • Tinted glass • Electric digital clock • Rear window defroster • AM/FM stereo radio • Interval windshield wipers • Manual air conditioning • Console • Light group • Pivoting front vent windows • Rear window wiper/washer

STANDARD EXTERIOR COLORS

Silver Metallic, Pastel Academy Blue Metallic, Medium Red Metallic, Medium French Vanilla Metallic

STANDARD INTERIOR COLORS

Charcoal, Academy Blue, Desert Tan

Specifications and descriptions used were in effect when this publication was approved for printing. Lincoln-Mercury Division reserves the right to discontinue options at any time, or change specifications, equipment or designs without notice and without incurring obligation. Standard and optional equipment listed is subject to change. Some features described are optional at extra cost. Some options are required in combination with other options. Availability of some features may be subject to a slight delay.

Get it together—Buckle up.

MERCURY LYNX LTS

LINCOLN-MERCURY DIVISION

