

MARQUIS '82

A close-up, low-angle shot of the front of a Lincoln Marquis '82. The image focuses on the central grille and the rectangular headlight assembly. The grille is composed of several vertical chrome bars. The headlight is illuminated, showing a warm orange-yellow glow. The background is dark, and the overall composition is dramatic, emphasizing the car's design details.

FROM LINCOLN-MERCURY

MERCURY MARQUIS: COMFORT IN THE CLASSIC TRADITION.

In an age of changing automobile designs and nameplates, Mercury Marquis stands uncompromising in its commitment to provide you with spacious full-size American-car comfort—and a superb

ride. This is truly an automobile in the grand classic tradition.

Yet for all its traditional values, Mercury Marquis is very much a contemporary car. Witness its advanced Automatic Overdrive Transmission. It incorporates a fourth forward gear which, when your car reaches cruising speed (about 40 mph), automatically shifts into the overdrive mode. Or take the new

optional Tripfinder® computer—a triumph of electronic technology that at the push of a button provides you with such instantaneous information as time, average speed, and fuel usage.

Mercury Marquis can fulfill your motoring needs in so many generous ways: with its elegant classic styling; with its roomy six-passenger capacity and spacious trunk; with its interior opulence

and luxuries, as in its Twin Comfort Lounge seats, with luxury cloth or leather and vinyl trim. And in its wide choice of models—from the most affordable Marquis, to the well-appointed Marquis Brougham, to the exclusive, distinctive Grand Marquis. There are also two wagons to choose from, including the Colony Park Wagon. Mercury Marquis, uncompromising in its room, ride, and comfort.

Mercury Grand Marquis two-door sedan in Medium Red Metallic, with standard deluxe wheel covers.



Grand Marquis instrument panel.



Some of the equipment shown may be available only at extra cost and only on specific models. Please see pages 12 through 15 for specific information regarding standard and optional equipment.

Mercury Grand Marquis four-door sedan in Dark Pewter and Black, with optional formal coach roof and turbine spoke cast aluminum wheels.

**GRAND MARQUIS: LUXURY
THAT CATERS TO YOUR
COMFORT.**

The most luxurious Mercury you can buy. That's the Grand Marquis.

Grand Marquis, pictured on the preceding page, beautifully blends distinctive, classic styling and six-passenger comfort with an exceedingly

high level of equipment. Standard are such convenient features as power brakes, power steering, and power windows. Standard also are Twin Comfort Lounge seats, which are as plush and comfortable as their name suggests, shown below in

Dark Red luxury cloth with dual fold-down center armrests. Or if you prefer, you may order your seats in leather with vinyl trim as an option. The front seats are independently movable, with the convenience of a bench seat when they're

aligned. The rear seat, with its fold-down center armrest, is equally luxurious. There are even map pockets on the backs of the front seats and dual beam dome lights to read by.

Even the doors are luxurious, with

deluxe trim and full-length armrests with woodtone panels and courtesy lights.

Grand Marquis is offered in a two- and four-door version, as shown on the preceding page. In either, you travel in a satisfying aura of luxury.



**MARQUIS BROUGHAM:
COMFORT THAT MOVES
YOU.**

Marquis Brougham invites you to experience the Marquis ride.

This elegant, luxuriously smooth ride is the sum of many parts—from stabilizer bar, coil-spring front suspension, four-bar link rear suspension, and low-profile steel-belted radial tires, among others—that

combine to help isolate you in silent, smooth splendor from the harshness of the road. The standard luxury sound package contributes significantly to the car's quietness.

Standard engine for Marquis is the 4.2 liter (255 CID) V-8, teamed up with

the innovative Automatic Overdrive Transmission. In the four-door versions of the Brougham and Grand Marquis, and station wagons only, the standard engine is the 5.0 liter (302 CID) V-8. It also teams up with the Automatic Overdrive Transmission.

Inside the Marquis Brougham, you'll find numerous luxury touches to make your driving all the more pleasurable: full-length armrests, door pull straps, deep carpeting, dual instrument panel courtesy lights, four-spoke color-keyed steering wheel, seat belt warning chimes, AM/FM

stereo—the list goes on and on.

Shown below is the Brougham interior with standard Twin Comfort Lounge seats trimmed in Dark Red cloth.

Marquis Brougham—inviting you to experience uncompromised room, ride, and comfort.



Mercury Marquis Brougham four-door sedan (foreground) in French Vanilla Metallic, with vinyl coach roof and standard wheel covers.

Mercury Marquis Brougham two-door sedan (background) in Medium Red Metallic, with vinyl coach roof and optional wire wheels.



MERCURY MARQUIS.

Our lowest-priced Marquis.

You can enjoy owning the lowest-priced Mercury Marquis and yet not compromise on ride, room, and comfort.

With Mercury Marquis, you'll experience the advantages of its 4.2 liter (255 CID) V-8 engine, teamed with its advanced Automatic Overdrive Transmission. It incorporates a fourth

forward gear which, when your Marquis reaches cruising speed (about 40 mph), automatically shifts into the overdrive mode to increase fuel efficiency.*

Mercury Marquis will also impress you with its inviting full size and its elegant classic styling. And there's so much more than meets the eye.

Inside Marquis, you'll discover

spacious room and outstanding comfort. Featuring a Flight Bench seat with a fold-down center armrest, trimmed in cloth and vinyl. Shown below in Midnight Blue.

Marquis also offers a generous number of other fine standard features, including: deluxe seat belts, four-spoke steering wheel, nylon cut-pile carpeting—

all color-keyed. And there's the added courtesy of a glove box light, front ashtray light, rear-door light switches, and luggage compartment light.

Here's a full-size four-door with the style, room, comfort, and ride that you want—all in the lowest-priced Marquis.

Mercury Marquis. Committed to your driving satisfaction.

**EPA estimates were not available at the time this catalog was published. Mercury Marquis, however, should post in the new EPA Gas Mileage Guide, excellent mileage figures. See your Lincoln-Mercury Dealer for the latest information.*



Mercury Marquis four-door sedan in optional Medium Blue Metallic, with optional Midnight Blue full-vinyl roof and optional luxury wheel covers.



**MARQUIS WAGONS:
AMERICA'S ROOMIEST
WAGONS.***

One way to get more room than in a Marquis sedan is to get a Marquis Wagon. Similar smooth ride, similar sheer comfort, but more room.

A Marquis Wagon has a cargo area of 52.6 cubic feet with the rear seat up; seat

down, cargo room goes up to 89.5 cubic feet. And that's not counting the lockable stowage compartment which gives you still more room. And the cargo carpet is removable if you don't wish to muss or scuff it up. Another nice touch: You can

order removable dual-facing rear seats to bring your carrying capacity up to eight people.

The Marquis Wagon comes in two choices: the Marquis and the prestigious Colony Park. Both offer such conveniences

as a three-way tailgate and power tailgate tinted window. And the standard engine is the powerful 5.0 liter (302 CID) V-8. (For a full list of wagon features, see page 12.) To add even more luxury to your Colony Park Wagon, consider the Grand Marquis decor

option described on page 15.

America's largest wagons, featuring the convenience of a wagon, the luxury of a sedan. Those are the Marquis and Colony Park Wagons.

**Based on EPA Volume Index, excluding other Ford Motor Company products.*



Marquis Colony Park Wagon (foreground) in optional Medium Faun Metallic, with optional turbine spoke cast aluminum wheels.

Marquis Station Wagon (background) in Dark Brown Metallic, with optional wire wheel covers.



Spacious Colony Park interior, with cloth Twin Comfort Lounge seats and center armrests folded down.

YOUR CHOICE OF MARQUIS MODELS WITH THEIR STANDARD FEATURES



MARQUIS 4-DOOR SEDAN STANDARD FUNCTIONAL FEATURES

- 4.2 liter (255 CID) V-8 engine
- Automatic Overdrive Transmission
- Power steering
- Power brakes: front disc/rear drum
- AM radio (may be deleted for credit)
- Luxury sound package
- Automatic parking brake release
- Deep-well luggage compartment
- Front stabilizer bar
- Long-and short-arm coil-spring front suspension
- Four-bar link rear suspension
- Mini-spare tire
- Concealed electric windshield wipers
- Low-profile steel-belted radial WSW tires
- 60-amp alternator
- 36-amp maintenance-free battery
- Left-hand remote-control mirror

STANDARD INTERIOR FEATURES

- Full six-passenger seating capacity
- Flight Bench front seat trimmed in cloth
- Four-spoke color-keyed steering wheel
- Dual-pod instrument cluster with woodtone instrument panel appliqué
- Steering-column-mounted stalk controls for washer/wiper, high/low headlamp beam, horn, and turn signals
- Nylon color-keyed cut-pile carpeting
- Color-keyed deluxe seat belts with tension reliever
- Cigar lighter
- Day/night mirror
- Lockable glove box
- Trunk, glove box, and ash tray lights

STANDARD EXTERIOR FEATURES

- Hood ornament
- Dual halogen headlamps
- Bright headlamp and parking lamp surround moldings
- Full wheel covers
- Bright rocker panel moldings
- Front bumper guards
- Wraparound taillamps
- Bright belt, wheel-lip, roof drip, and window frame moldings



MARQUIS BROUGHAM 2-DOOR SEDAN MARQUIS BROUGHAM 4-DOOR SEDAN

Includes all Marquis standard features, plus these additions and/or differences:

- 5.0 liter (302 CID) engine (4-door only)
- AM/FM stereo radio with four-speaker system

- Vinyl coach roof with wrap-over moldings
- Coach lamps
- Analog quartz clock
- Power windows
- Twin Comfort Lounge seats trimmed in Brougham cloth
- Deluxe door and quarter trim
- 18-ounce carpeting
- Full-length armrest with woodtone accents and courtesy lights
- Door pull straps
- 14-ounce carpeting on lower door panels
- Deluxe wheel covers
- Brougham nameplate on trunk
- Wide, bright lower bodyside moldings
- Hood accent stripes
- Dual instrument panel courtesy lights
- Seat belt warning chimes



GRAND MARQUIS 2-DOOR SEDAN GRAND MARQUIS 4-DOOR SEDAN

Includes all Marquis and Marquis Brougham standard features, plus these additions and/or differences:

- Twin Comfort Lounge seats trimmed in luxury cloth with dual front center armrests
- Rear-seat folding center armrest
- Luxury steering wheel
- Visor vanity mirror
- Luxury door trim and door pull straps
- Map pockets in front seat-back

- Dual beam dome/map light
- Tinted glass
- Fully carpeted trunk
- Spare tire cover
- Bodyside accent stripes
- Bright and Black wide rocker panel molding
- Grand Marquis nameplates
- Rear bumper guards
- Seat side shields with woodtone inserts



MARQUIS WAGON

Includes all Marquis standard features, plus these additions and/or differences:

- 5.0 liter (302 CID) V-8 engine
- Flight Bench front seat
- Three-way tailgate
- Power tailgate window, tinted
- Conventional spare tire/wheel
- Removable load floor carpet
- Lockable storage compartment
- Heavy-duty frame
- Rear bumper guards
- Rear bumper step pad
- Bright and Black tailgate window molding
- Integral backup lights and taillamps
- Cargo compartment light
- Tailgate door opening light switch
- P-215/75R14 WSW tires



MARQUIS COLONY PARK WAGON

Includes all Marquis Wagon standard features, plus these additions and/or differences:

- AM/FM stereo radio with four speakers
- Power windows
- Deluxe vinyl Twin Comfort Lounge seats
- Coach lamps
- Analog quartz clock
- Deluxe door trim
- Seat belt warning chimes
- Full-length door armrests with pull straps
- Dual instrument panel courtesy lights
- Deluxe wheel covers
- Full-length bodyside and tailgate rosewood-tone appliqué with matching bright and woodtone rails
- 18-ounce color-keyed carpet in passenger area

INTERIOR SEATING CHOICES



Flight Bench seat, trimmed in cloth, standard on Marquis 4-door: In Dark Red, Midnight Blue, Medium Fawn. In vinyl trim, it's standard on Marquis Wagon, optional on Marquis 4-door: In Dark Red, Midnight Blue, Medium Fawn, Opal/Dark Red, Opal/Midnight Blue, Opal/Medium Fawn.



Twin Comfort Lounge seats, trimmed in cloth, standard on Marquis Brougham 2- and 4-door: In Dark Red, Midnight Blue, Medium Fawn, and French Vanilla. Same seat, minus French Vanilla, optional on Marquis, Marquis Wagon and Colony Park Wagon. In vinyl trim, optional on Marquis Brougham 2- and 4-door: In Dark Red, Midnight Blue, Medium Fawn, French Vanilla, Opal/Dark Red, Opal/Midnight Blue, Opal/Medium Fawn. Same seat, minus French Vanilla, optional on Marquis, Marquis Wagon; standard on Colony Park Wagon.



Flight Bench seat, in DuraWeave vinyl, optional on Marquis Wagon: In Dark Red, Midnight Blue, Medium Fawn. DuraWeave vinyl also available with Twin Comfort Lounge seats, optional on Marquis Wagon and Colony Park Wagon: In Dark Red, Midnight Blue, and Medium Fawn.



Twin Comfort Lounge seats, trimmed in Shubert Cloth, standard on Grand Marquis 2- and 4-door: In Dark Red, Midnight Blue, Medium Fawn, and French Vanilla. Same seat, with the Grand Marquis Decor Option, is optional on Colony Park Wagon, minus French Vanilla. Trimmed in leather, this seat is optional on Grand Marquis: In Dark Red, Midnight Blue, Medium Fawn, French Vanilla, Opal/Dark Red, Opal/Midnight Blue, Opal/Medium Fawn.

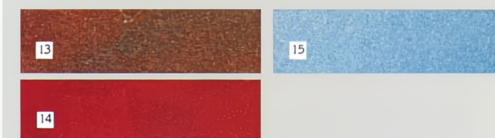
EXTERIOR COLOR CHOICES



STANDARD COLORS

- | | |
|--|--|
| <input type="checkbox"/> 1. Black | <input type="checkbox"/> 7. Light Blue |
| <input type="checkbox"/> 2. White | <input type="checkbox"/> 8. Pastel French Vanilla* |
| <input type="checkbox"/> 3. Light Pewter Metallic | <input type="checkbox"/> 9. Medium French Vanilla* |
| <input type="checkbox"/> 4. Dark Pewter Metallic | <input type="checkbox"/> 10. Dark Brown Metallic |
| <input type="checkbox"/> 5. Medium Red | <input type="checkbox"/> 11. Fawn |
| <input type="checkbox"/> 6. Midnight Blue Metallic | <input type="checkbox"/> 12. French Vanilla Metallic |

*Four-doors only.



OPTIONAL GLAMOUR PAINTS

- | |
|---|
| <input type="checkbox"/> 13. Medium Fawn Metallic |
| <input type="checkbox"/> 14. Medium Red Metallic |
| <input type="checkbox"/> 15. Medium Blue Metallic |

OPTIONAL TU-TONE PAINTS

UPPER COLOR	LOWER COLOR	VINYL ROOF	BODYSIDE MOLDING
Pastel French Van.	Med. French Van.	French Vanilla	French Vanilla
Midnight Blue	Med. Blue Met.	Midnight Blue	Midnight Blue
Black	Dark Pewter Met.	Black	Black
Dark Brown Met.	Med. Fawn Met.	Dark Brown	Dark Brown
Light Pewter Met.	Dark Pewter Met.	Light Pewter	Light Pewter

NOTE: Due to occasional printing irregularities, the colors shown may vary from actual hues. Please see your Lincoln-Mercury Dealer for accurate chips.

YOUR CHOICE OF OPTIONS ALONG WITH
SOME STANDARD FEATURES.

	Marquis	Marquis Brougham	Grand Marquis	Marquis Wagon	Colony Park Wagon
<input type="checkbox"/> Air Conditioning, Auto. Temp. Control	O	O	O	O	O
<input type="checkbox"/> Air Conditioning, Manual	O	O	O	O	O
<input type="checkbox"/> Auto Lamp—On/Off Delay System	O	O	O	O	O
<input type="checkbox"/> Axle, Traction-Lok	O	O	O	O	O
<input type="checkbox"/> Battery, 71-Amp, Heavy-Duty	O	O	O	O	O
<input type="checkbox"/> Bumper Guards, Rear	O	O	S	S	S
<input type="checkbox"/> Bumper Rub Strips*	O	O	O	O	O
<input type="checkbox"/> Chimes, Seat Belt Reminder	O	S	O	S	S
<input type="checkbox"/> Clock, Analog Quartz	O	S	S	O	S
<input type="checkbox"/> Clock, Electronic Digital	O	O	O	O	O
<input type="checkbox"/> Cornering Lamps	O	O	O	O	O
<input type="checkbox"/> Defroster, Electric Rear Window*	O	O	O	O	O
<input type="checkbox"/> Extended Service Plan (see page 16)	O	O	O	O	O
<input type="checkbox"/> Glass, Tinted Complete*	O	O	S	O	O
<input type="checkbox"/> Illuminated Entry System	O	O	O	O	O
<input type="checkbox"/> Luggage Compartment Trim	O	O	S	NA	NA
<input type="checkbox"/> Luggage Rack	NA	NA	NA	O	O

MIRRORS

<input type="checkbox"/> Illuminated Visor Vanity Mirrors	O	O	O	O	O
<input type="checkbox"/> RH Remote-Control Mirror	O	O	O	O	O
<input type="checkbox"/> Molding, Protective Bodyside	O	O	O	O	O
<input type="checkbox"/> Paint—Glamour and Tu-Tone (see color and trim selector)	O	O	O	O	NA
<input type="checkbox"/> Protection, Lower Bodyside	O	O	O	O	O

POWER

<input type="checkbox"/> Power Antenna*	O	O	O	O	O
<input type="checkbox"/> Power Brakes and Power Steering	S	S	S	S	S
<input type="checkbox"/> Power Door Locks	O	O	O	O	O

	Marquis	Marquis Brougham	Grand Marquis	Marquis Wagon	Colony Park Wagon
<input type="checkbox"/> Power Seat, Flight Bench	O	NA	NA	O	NA
<input type="checkbox"/> Power Seat, 6-Way, Driver Side	O	O	O	O	O
<input type="checkbox"/> Power Seat, 6-Way, Both Sides	NA	O	O	NA	O
<input type="checkbox"/> Power Windows	O	S	S	O	S

RADIOS

<input type="checkbox"/> AM (may be deleted for credit)	S	NA	NA	S	NA
<input type="checkbox"/> AM/FM Stereo (may be deleted for credit where standard)	O	S	S	O	S
<input type="checkbox"/> AM/FM Stereo with 8-Track Tape	O	O	O	O	O
<input type="checkbox"/> AM/FM Stereo with Cassette Tape	O	O	O	O	O
<input type="checkbox"/> AM/FM Electronic Stereo Search	O	O	O	O	O
<input type="checkbox"/> AM/FM Electronic Stereo Search with 8-Track	O	O	O	O	O
<input type="checkbox"/> AM/FM Electronic Stereo Search/Cassette w/Dolby® Noise Reduction	O	O	O	O	O
<input type="checkbox"/> Premium Sound System*	O	O	O	O	O

ROOFS

<input type="checkbox"/> Coach Roof	NA	S	S*	NA	NA
<input type="checkbox"/> Formal Coach Roof (4-dr. models)	NA	O	O	NA	NA
<input type="checkbox"/> Full Vinyl Roof (4-dr. models)	O	O	O	NA	NA
<input type="checkbox"/> Seats, Removable Rear Dual Facing	NA	NA	NA	O	O
<input type="checkbox"/> Speed Control, Fingertip*	O	O	O	O	O
<input type="checkbox"/> Steering Wheel, Leather-Wrapped*	O	O	O	O	O
<input type="checkbox"/> Steering Wheel, Tilt	O	O	O	O	O
<input type="checkbox"/> Stripes, Bodyside	O	O	S	O	NA
<input type="checkbox"/> Stripes, Hood Accent	O	S	S	O	O
<input type="checkbox"/> Suspension, Handling*	O	O	O	NA	NA

	Marquis	Marquis Brougham	Grand Marquis	Marquis Wagon	Colony Park Wagon
<input type="checkbox"/> Suspension, Heavy-Duty	O	O	O	O	O
<input type="checkbox"/> Tripminder® Computer	O	O	O	O	O
<input type="checkbox"/> Windows, Pivoting Vent*	O	O	O	O	O

ENGINES/TRANSMISSIONS

<input type="checkbox"/> 4.2 Liter 2 BBL (255 CID) V-8	S	S**	S**	NA	NA
<input type="checkbox"/> 5.0 Liter 2 BBL (302 CID) V-8	O	S†	S†	S	S
<input type="checkbox"/> Automatic Overdrive Transmission	S	S	S	S	S

RADIAL TIRES

<input type="checkbox"/> P205/75R14 WSW	S	S	S	NA	NA
<input type="checkbox"/> P215/75R14 WSW	O	O	O	NA	S
<input type="checkbox"/> P225/75R14 WSW	O	O	O	O	O
<input type="checkbox"/> P205/75R15 WWSW*††	O	O	O	O	O
<input type="checkbox"/> Conventional Spare Tire	O	O	O	S	S

BSW = Black Sidewall. WSW = White Sidewall. WWSW = Wide White Sidewall. ††Available with puncture-resistant feature.

WHEELS

<input type="checkbox"/> Full Wheel Covers	S	NA	NA	S	NA
<input type="checkbox"/> Deluxe Wheel Covers	NA	S	S	NA	S
<input type="checkbox"/> Luxury Wheel Covers	O	O	O	O	O
<input type="checkbox"/> Wire Wheel Covers	O	O	O	O	O
<input type="checkbox"/> Cast Aluminum, Turbine Spoke Wheels*	O	O	O	O	O

S—Standard.

O—Optional.

NA—Not available.

OPTIONAL PACKAGES

- ☐ APPEARANCE PROTECTION GROUP
Includes door-edge guards, front and rear color-keyed carpeted floor mats, and license plate frame(s).
- ☐ CONVENIENCE GROUP
Includes intermittent windshield wipers; right-hand visor vanity mirror (standard on Grand Marquis); remote-control decklid release (tailgate lock on wagons); trip odometer; and warning light cluster.
- ☐ GRAND MARQUIS DECOR OPTION (Available Colony Park only.)
Includes Twin Comfort Lounge seats in cloth or optional leather, luxury steering wheel, luxury trim panels with door pull straps, tinted glass, luxury armrests, dual beam dome lamp, right-hand visor vanity mirror, map pockets, and seat side shields with woodtone inserts.
- ☐ LOCK CONVENIENCE GROUP
Includes power door locks and power release of trunk or tailgate lock.
- ☐ TRAILER-TOWING PACKAGE*
Includes special suspension, heavy-duty battery and radiator, 6.5" wheels on sedans, heavy-duty brakes (sedan only), and power steering oil cooler. Also includes wiring harness and turn signal relays, and transmission oil cooler. Requires 5.0 liter engine, conventional spare tire, and P215/75R14 tires (or larger).
- ☐ VISIBILITY LIGHT GROUP
Includes engine compartment light; dual beam dome map light (std. on Grand Marquis); dual instrument panel courtesy lights (std. on Marquis Brougham, Grand Marquis, and Colony Park); and headlamp-on warning buzzer.

*This equipment is subject to additional ordering requirements or limitations. Please consult your Dealer for details.
**4.2 Liter V-8 standard on two-door model
†5.0 Liter V-8 optional on two-door model

1. LUXURY STEERING WHEEL WITH "TILT" FEATURE. Adjusts to five positions. Allows easy entry and exit from the driver's seat.

2. FINGERTIP SPEED CONTROL to lessen fatigue on long trips. Includes luxury steering wheel and "resume" feature.

3. AIR CONDITIONING is available with either manual or Automatic Temperature Control.

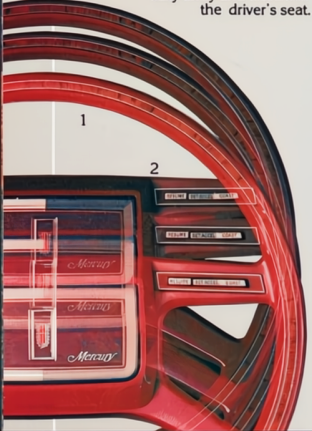
4. RADIO. Electronic AM/FM Stereo Search radio with 8-track tape is one of seven Marquis radio choices. Add optional Premium Sound System to any of the stereo radios for greatly improved sound quality. This system includes two additional door speakers, upgraded rear speakers, and power amplifier.

5. NEW TRIPMINDER® COMPUTER. High-technology option offers you, at the push of a button, such information as the time, day, and date; trip odometer, trip average speed; instantaneous fuel economy data, trip average fuel economy, and fuel used.

6. ELECTRIC REAR WINDOW DEFROSTER helps keep your rear window free of fog, frost, ice, and snow.

7. ILLUMINATED ENTRY SYSTEM. When you lift the door handle, a ring of light appears around the keyhole.

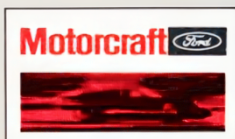
8. WHEELS AND WHEEL COVERS. Dress up your Marquis with a choice from (left to right) turbine-spoke cast aluminum wheels; wire wheel covers; full wheel covers; luxury wheel covers, and 15-inch full wheel covers. Deluxe wheel covers (standard on Marquis Brougham and Grand Marquis) are shown on page 6 (the four-door).



- POWER ANTENNA
- POWER DOOR LOCKS
- POWER SEATS
- POWER WINDOWS

MARQUIS SPECIFICATIONS

	2-Door	4-Door	Station Wagons
Wheelbase	114.3"	114.3"	114.3"
Turning Diameter ..	39.2'	39.2'	39.2'
Overall Length ..	212.3"	212.3"	218.0"
Overall Width ...	77.5"	77.5"	79.3"
Wheel Tread			
—Front	62.2"	62.2"	62.2"
—Rear	62.0"	62.0"	62.0"
Headroom			
—Front	37.9"	37.9"	38.9"
—Rear	37.2"	37.2"	39.1"
Legroom			
—Front (Max.) ..	42.1"	42.1"	42.1"
—Rear (Min.) ..	40.7"	40.7"	39.4"
Hiproom			
—Front	57.6"	61.2"	61.2"
—Rear	58.0"	56.9"	54.2"
Shoulder Room			
—Front	61.7"	61.7"	61.7"
—Rear	61.0"	61.7"	61.7"
Fuel Tank Capacity (Gals.)	20	20	20
Luggage Capacity w/Mini-Spare (Cu.Ft.)	22.4	22.4	—
Wagon Cargo Volume			
Behind Front Seat (Cu. Ft.)	—	—	89.5
Behind Rear Seat (Cu. Ft.)	—	—	52.6



...FOR SURE

QUALITY REPLACEMENT PARTS FROM FORD

Your new Mercury Marquis comes equipped with factory-engineered and approved parts including a dependable Motorcraft battery, shock absorbers, spark plugs, long life oil filters, and motor oil. For continued top performance, be sure to specify genuine Motorcraft parts whenever replacement is necessary.



Ford Motor Company's optional Extended Service Plan covers major components on new Mercury cars for longer than the vehicle's basic warranty. The cost is so moderate for the protection you get that it could pay for itself the first time you need it. Ask your Lincoln-Mercury Dealer for complete details of the Plan, which is available on cars sold and normally operated in the 50 United States and Canada.

CORROSION PERFORATION WARRANTY

Ford Motor Company offers a limited three-year corrosion perforation warranty excluding exhaust system components on all new 1982 Lincoln-Mercury automobiles. And at no cost to you.

The warranty states that any part which, in normal use, develops perforation from corrosion within three years of retail delivery or first use will be repaired or replaced free of charge by the selling Dealer after inspection by a Ford representative. Exhaust system components or parts which develop corrosion perforation caused by accidents or other damage are not covered.

This warranty valid only in the 50 United States.

MAINTENANCE SCHEDULE

The Ford Motor Company wants to reduce both the frequency and cost of scheduled maintenance on its cars to an absolute minimum. And compared to just a few years ago, we're making strides in that direction. For example, in 1973, an engine oil change was called for each 4,000 miles. In 1982, Marquis oil changes are recommended at 7,500-mile intervals. Other recommended intervals are now 30,000 miles between spark plug changes; 30,000 miles between air filter replacements; 50,000 miles or three years between engine coolant replacements. We're proud of these improvements, and we're working constantly to make them even better.

FORD-PAID REPAIR PROGRAMS AFTER THE WARRANTY PERIOD.

Sometimes Ford Motor Company offers adjustment programs to pay all or part of the cost of certain repairs. These programs are intended to assist owners and are in addition to the warranty or to required recalls. Ask Ford Motor Company or your Lincoln-Mercury Dealer about such programs relating to your Ford or Lincoln-Mercury vehicle.

To get copies of any adjustment program for your vehicle or the vehicle of interest to you:

Call Ford toll-free at
1-800-241-3673.
Alaska and Hawaii, call
1-800-243-3711.
In Georgia, call 1-800-282-0959

or write Ford at
Ford Customer Information System
Post Office Box 95427
Atlanta, GA 30347

We'll need your name and address; year, make, model, and vehicle identification number, as well as engine size; and whether you have a manual or automatic transmission.

TECHNICAL SERVICE BULLETINS

All vehicles need repairs during their lifetime. Sometimes Ford issues Technical Service Bulletins (TSBs) and easy-to-read

explanations describing unusual engine or transmission conditions which may lead to costly repairs, the recommended repairs, and new repair procedures. Often a repair now can prevent a more serious repair later. Ask Ford Motor Company or your Lincoln-Mercury Dealer for any such TSBs and explanations relating to your Ford or Lincoln-Mercury vehicle.

To get copies of these Technical Service Bulletins and explanations for your vehicle or the vehicle of interest to you:

Call Ford toll-free at
1-800-241-3673.
Alaska and Hawaii, call
1-800-243-3711.
In Georgia, call 1-800-282-0959
or write Ford at
Ford Customer Information System
Post Office Box 95427
Atlanta, GA 30347
We'll need your name and address; year, make, model, and vehicle identification number, as well as engine size; and whether you have a manual or automatic transmission.
Buy or lease your Marquis from your Lincoln-Mercury Dealer.

Specifications and descriptions used were in effect when this publication was approved for printing. Lincoln-Mercury Division reserves the right to discontinue options at any time, or change specifications, equipment or designs without notice and without incurring obligation. Standard and optional equipment listed are subject to change. Some features described are optional at extra cost. Some options are required in combination with other options. Availability of some features may be subject to a slight delay.

Litho in U.S.A. (171M) 8-81 Form No. P-8111

MERCURY MARQUIS

LINCOLN-MERCURY DIVISION

