

# LYNX '82



FROM LINCOLN-MERCURY

## ENTER THE WORLD OF LYNX

Lincoln-Mercury introduced Lynx to meet America's need for a small, well-equipped, fuel-efficient car. With its advanced technology and contemporary design, Lynx has become a solid success during its first year.

Building on this success, Lynx for 1982 is introducing a brand-new five-door hatchback. This means you have a choice this year of a Lynx three-door or five-door hatchback, plus the stylish station wagon model. In addition, Lynx offers several equipment and luxury levels, ranging from the standard Lynx all the way up to the luxurious Lynx LS.

A big part of the Lynx success story is its advanced technology. Lynx offers front-wheel drive for sure-footed traction. An advanced 1.6 liter engine designed for an optimum combination of power and efficiency. And a computer-designed aerodynamic shape which contributes to excellent gas mileage.\*

Lynx is also the first American-built compact with a fully independent suspension\*\* on all four wheels, for a smooth ride and precise handling.

But sophisticated engineering is only part of the story. Lynx offers everything you'd expect in a car from Lincoln-Mercury. Superb contemporary styling. Lots of interior space. The sheer comfort of deeply padded, contoured bucket seats. A soft-feel instrument panel with "soft-glow" lights for easy reading. Over 53 square feet of plush carpeting. And thoughtful touches like coin trays and storage bins. In Lynx, you get all this, plus exceptional fuel economy.

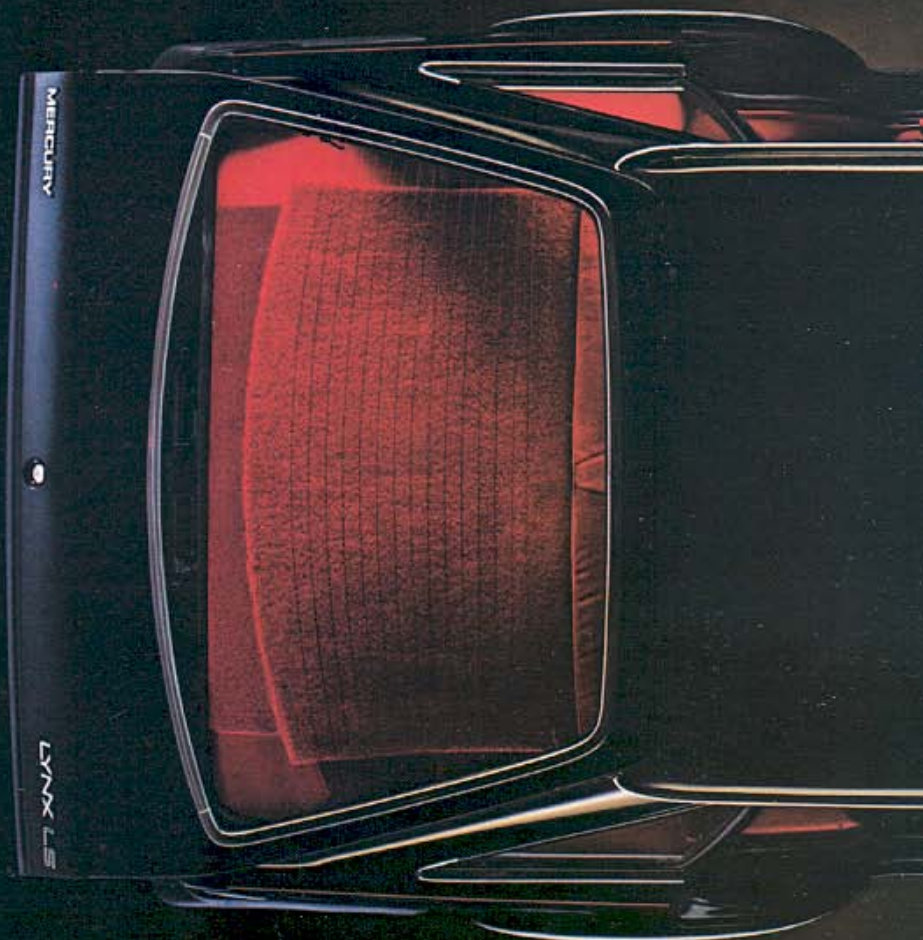
Lynx is a car with world-class technology, designed and developed by Ford Motor Company engineers from all over the world. But it's built in America to meet America's needs, as last year's success clearly shows. We invite you to read on and discover the very special world that is Lynx.

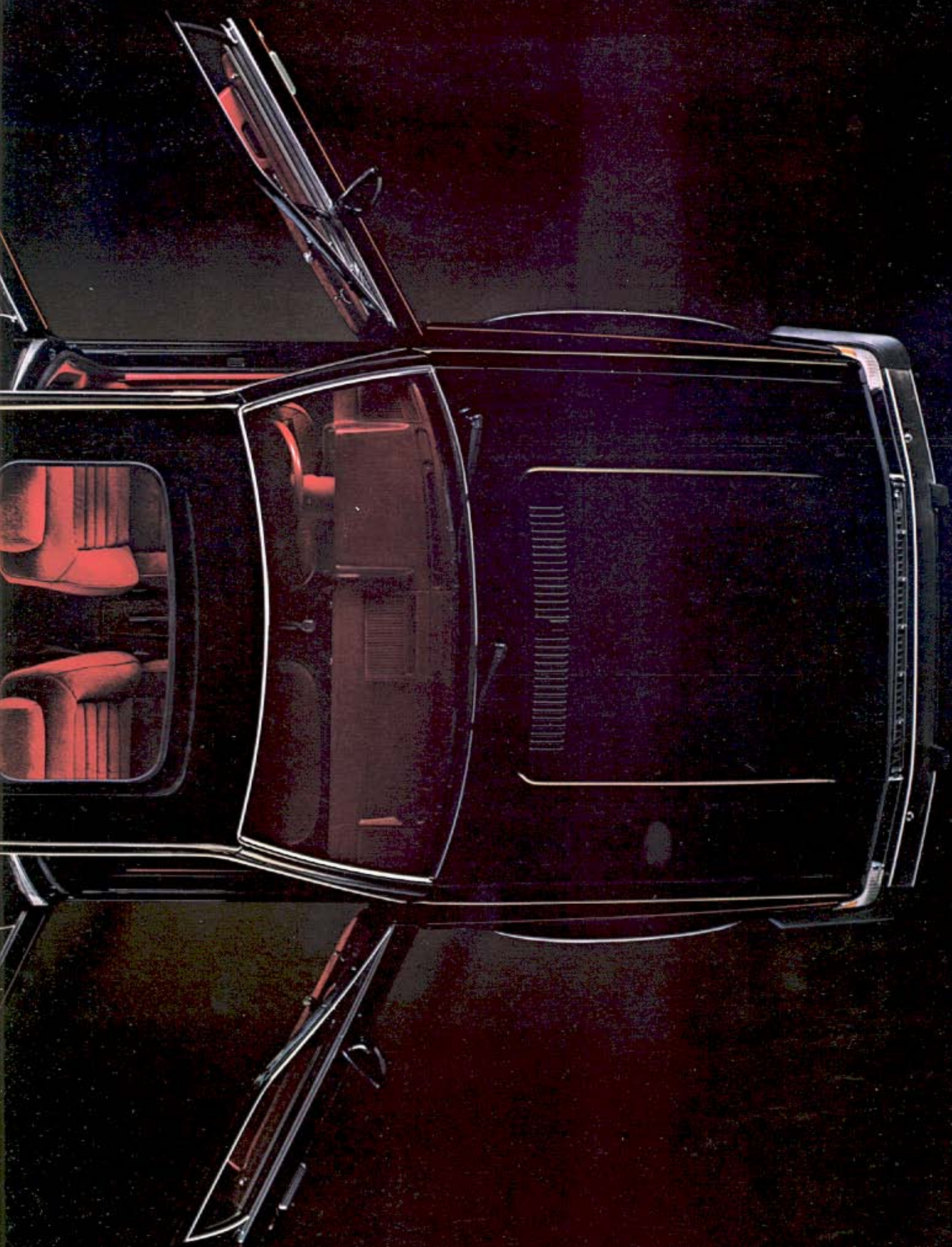
47 EST. HWY. **31**\* EPA EST. MPG

\*Not applicable to units with power steering or air conditioning. Estimate for comparison. Your mileage may differ depending on speed, distance and weather. Actual highway mileage lower.

\*\*Excluding other Ford Motor Company products.

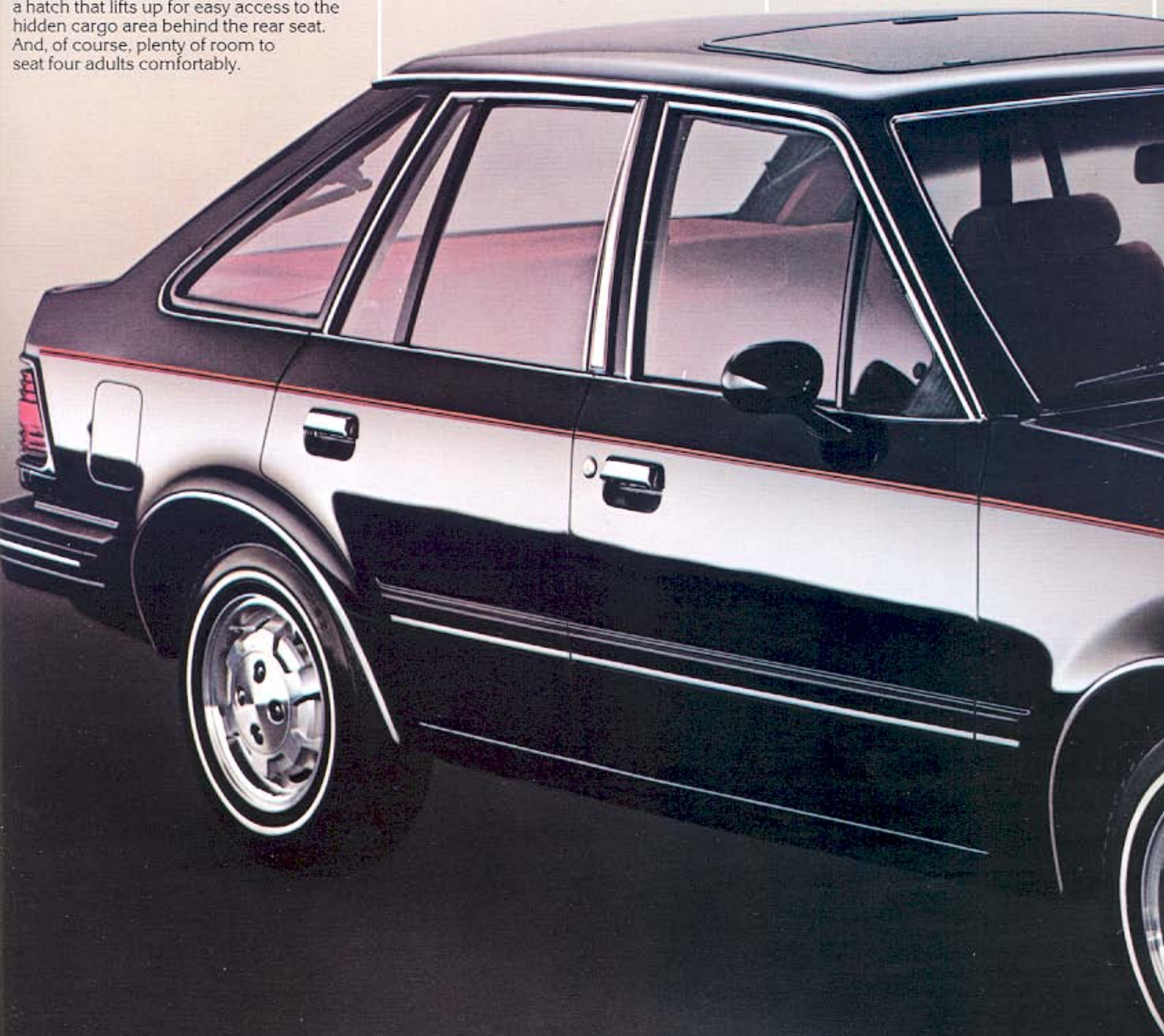
Some of the equipment shown may be available only at extra cost, and only on specific models. Please see pages 16 to 19 for specific information regarding standard and optional equipment.





## THE NEW 5-DOOR WORLD OF LYNX

For 1982, Lynx offers a brand-new five-door hatchback. With four doors for easy entrance and exit of passengers, and a hatch that lifts up for easy access to the hidden cargo area behind the rear seat. And, of course, plenty of room to seat four adults comfortably.



*Mercury Lynx LS five-door in Black with optional cast aluminum spoke wheels and flip-up open-air roof.*



## THE INNER WORLD OF LYNX

Enter the elegant Lynx LS and relax in comfortable reclining bucket seats. Run your fingers over the lush velour luxury cloth which covers the seats and accents the door panels. Note the plush cut-pile carpeting. Lynx creates a special inner world that's a pleasure to be in.

Take command of the four-spoke,

soft-feel steering wheel. Switch on the AM/FM stereo radio, complete with four speakers. Notice the rich woodtone appliques accenting the console and instrument panel.

See how the contemporary instrument panel of Lynx LS has all the gauges and warning lights you

appreciate—including large round dials for speedometer and tachometer, smaller dials for temperature and fuel gauges, and a convenient odometer to measure your individual trip mileage.

You get all this, and more, when you enter the special inner world that is Lynx LS.



*Lynx LS interior with reclining bucket seats in Red velour luxury cloth.*



## EXPERIENCE THE WORLD IN 3-DOORS

The Lynx three-door hatchback is an American success story. Fitting the needs of today.

Consider its versatility. Lynx seats four adults in comfort. And at the same time provides 16.2 cubic feet of hidden storage space. If you need even more room for luggage, the rear seat folds down to increase the cargo capacity to 25.9 cubic feet.

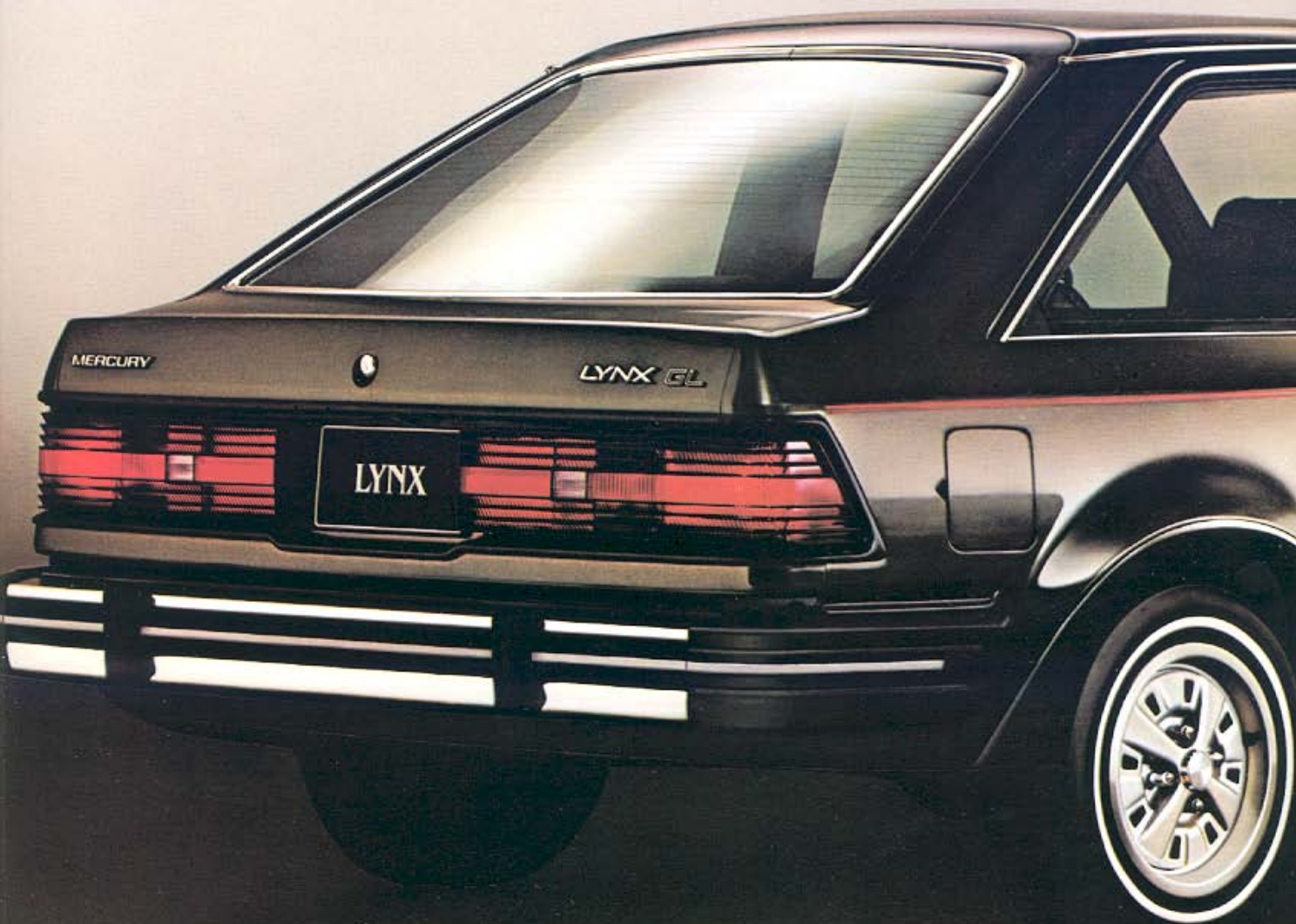
Study the way Lynx is put together.

Check out the fit of the hood, the doors, the well-tailored interior. In fact, Lynx is designed so that you need spend only about an hour a year on scheduled maintenance for the first 5-year or 50,000-mile period. That's an average of only about \$34\* a year.

Lynx's high level of standard features could very well be another reason for its popularity. Every Lynx is equipped with halogen headlights, steel-belted radial

tires, electric windshield washers and wipers, a four-speed manual overdrive transaxle with floor shift, and disc/drum brakes with a split-diagonal braking system for your added protection. And much more.

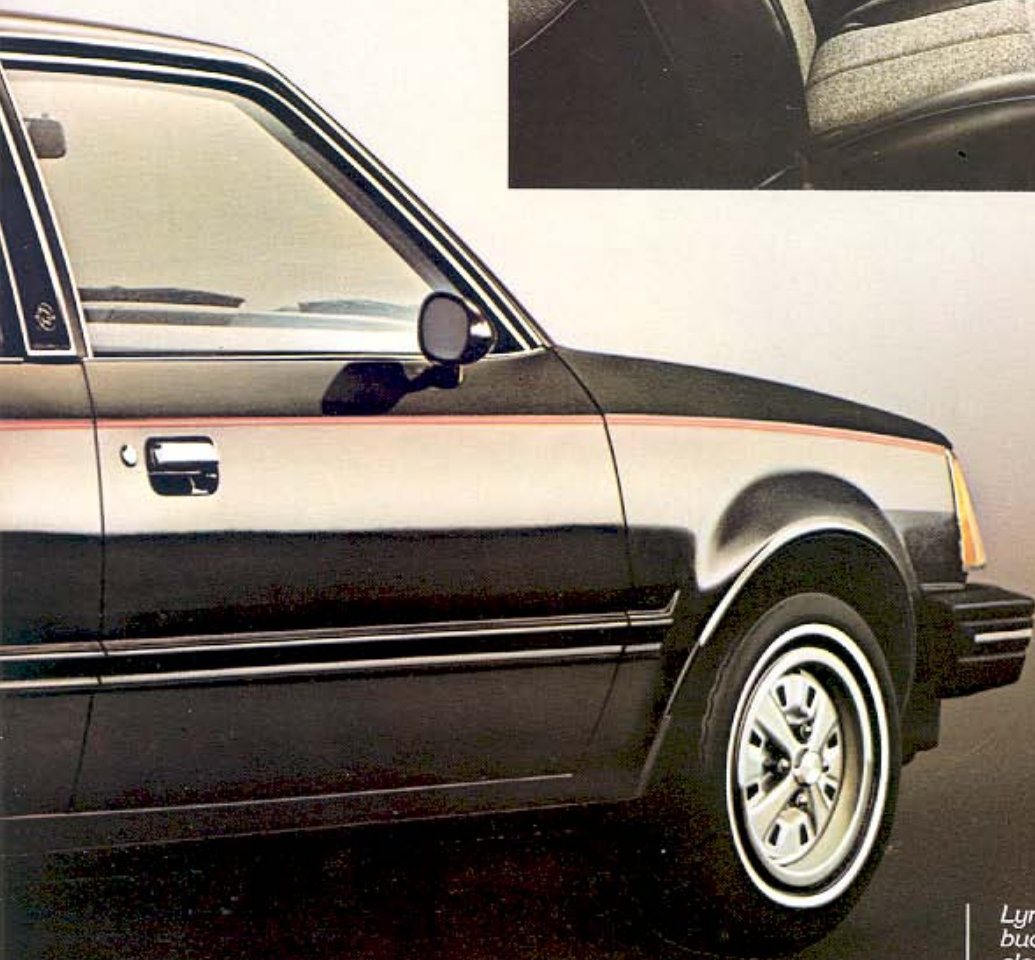
Lynx offers popular options, too. You can select air conditioning, power steering, automatic transaxle, speed control, front vent windows, and a wiper/washer for the rear window. Plus



glamour paints, tinted glass, and a flip-up open-air roof. (Please see pages 16 through 19 for a full listing of standard and optional equipment.)

Versatility, economy, features—all good reasons to experience the world in a Lynx three-door.

\*Based on recommended scheduled maintenance, Ford Labor Time Standards, current retail parts prices, and an hourly labor rate of \$28. Some areas will be higher, some lower.



*Lynx GL optional interior with reclining bucket seats trimmed in deluxe black cloth-and-vinyl, color-keyed seat belts with tension relievers, and console with molded-in cup holders and coin slots.*

*Mercury Lynx GL three-door in Dark Pewter Metallic with optional styled steel wheels.*

## THE WAGON WORLD OF LYNX

Choose a Lynx wagon, and get the first American-built wagon with both the traction of front-wheel drive and the smooth ride of four-wheel fully independent suspension. Plus the best gas mileage ratings of any wagon\*\* built

in America: 44 EST. HWY. 28\* EPA EST. MPG.

The Lynx wagon has all the standard equipment of the hatchbacks, plus power brakes, a tailgate ajar warning light, a window-shade-type cargo area cover, and

carpeting on the load floor. Options include air conditioning, speed control, a roof air deflector, luggage rack, and a wiper/washer for the rear window.

You can enhance the appearance of your Lynx GL, Lynx GS, or Lynx LS wagon



with the Villager Woodtone Option (shown below). Full-length woodtone trim along the bodyside and liftgate is accented by surround rails with bright edges and a protective bodyside molding. The deluxe roof-mounted luggage rack boosts your

carrying capacity and adds to the good looks of this option package.

For the inside story on Lynx wagons, turn the page.

44 EST. HWY. **28**\* EPA EST. MPG

\*Estimate for comparison. Your mileage may differ depending on speed, distance and weather. Actual highway mileage lower.

\*\*Excluding other Ford Motor Company products.



*Mercury Lynx GS wagon (left) with Villager Option, shown in Fawn, with optional cast aluminum spoke wheels.*

*Mercury Lynx L wagon in Bright Red with semi-styled steel wheels.*

## ENJOY THE WORLD IN SPACE

The Lynx wagon has space to relax in. And space to stow luggage in. Comfortable bucket seats and a full-width rear seat provide plenty of room for four passengers. A convenient liftgate opens

onto 27.8 cubic feet of luggage space, even with the rear seat up. Fold it down and you more than double the cargo-carrying capacity—to 57.7 cubic feet—remarkable space in a small wagon.

A handy window-shade-type cover rolls out to conceal valuables, rolls back when not in use.

Note the plush Lynx GS interior, shown below. It features reclining low-back



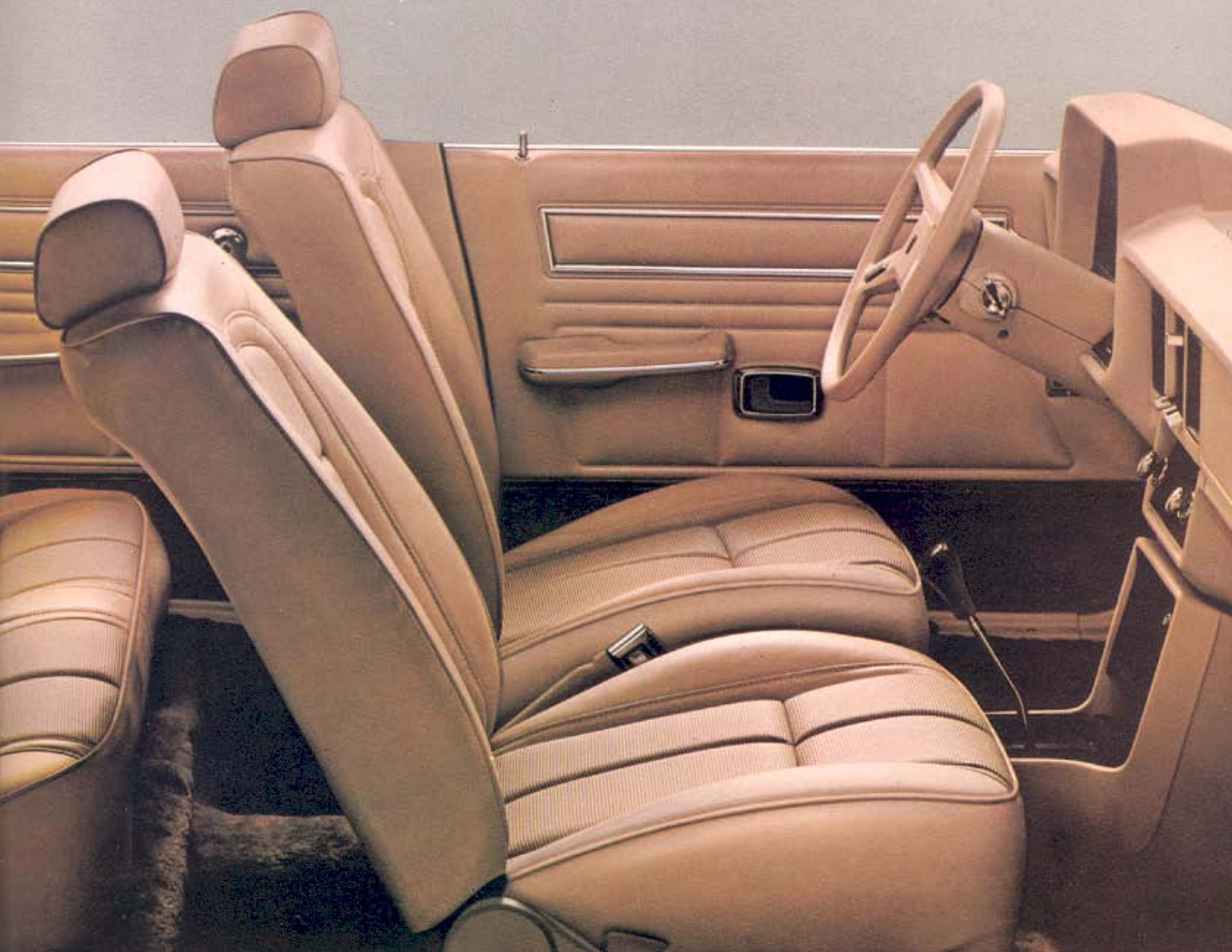
bucket seats in deluxe vinyl. You have a choice of eight color offerings in vinyl, including the Light Fawn shown here. Cloth trim selections include four color choices: Black, Medium Red, Medium

Wedgewood Blue, and Light Fawn.

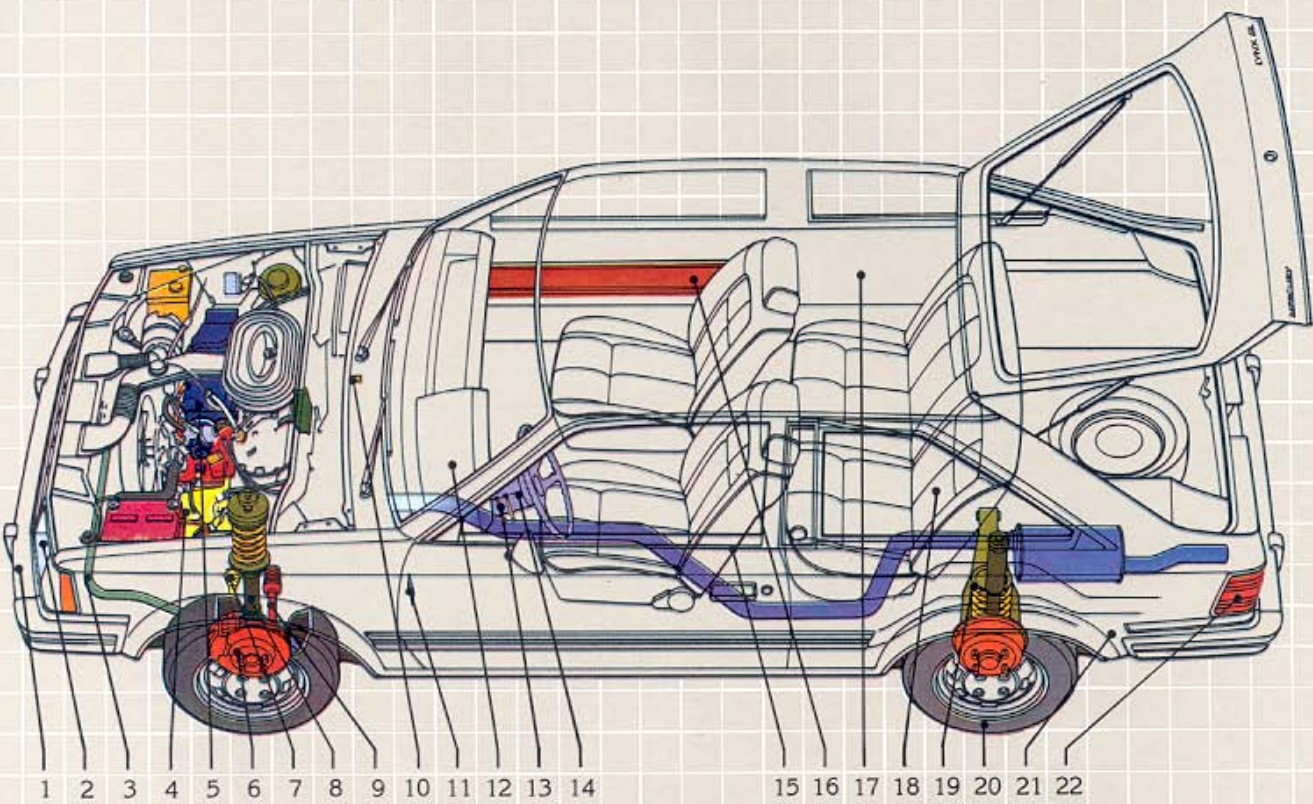
Other Lynx GS niceties are a digital clock; interval windshield wipers; console with warning lights for low fuel and low windshield washer fluid, or the failure of

headlights or taillights; woodtone accents on the instrument panel; and deep cut-pile carpeting.

People space. Cargo space. Comforting space. All in the Lynx world of space.



# THE WORLD IN ENGINEERING



You don't have to be an engineer to appreciate great engineering.

- 1. Chrome-plated high-strength light alloy bumpers.
- 2. Halogen sealed-beam headlights for bright, white light.
- 3. Front stabilizer bar.
- 4. Axle ratio: 3.59:1 (MTX); 3.31:1 (ATX).
- 5. 1.6 liter four-cylinder overhead cam engine.
- 6. Manual front disc brakes, rear drum. Split-diagonal braking system. (Power brakes standard on station wagons.)
- 7. Front-wheel drive. Provides traction along a wavy street or rain-swept highway.
- 8. Hydraulic, telescoping shock absorbers help provide a smooth ride on bumpy roads.
- 9. Rack-and-pinion steering for precise steering.
- 10. Fluidic windshield washer system designed for efficient cleaning action.
- 11. Inside hood release.
- 12. Soft instrument panel.
- 13. Stalk-mounted control levers for turn signals, horn, headlamp dimmer, and windshield wiper/washer.
- 14. Energy-absorbing steering column.
- 15. Inertia seatback release (3-door) allows access to rear seat without use of a lever.
- 16. High-strength steel doorguard beams.
- 17. Sound insulation.
- 18. Full-width-construction rear seat folds down for more cargo space.
- 19. Independent rear suspension and helical coil springs contribute to smooth ride.
- 20. P165/80R13 steel-belted radial tires.
- 21. Unitized body construction.
- 22. Full-width wraparound taillights (3-door and 5-door).

## INTERIOR SEATING CHOICES



- ☐ High-back bucket seats. Standard on LYNX and LYNX L in vinyl. Colors: Black, Med. Red, Med. Wedgewood Blue, Light Fawn; and Opal with Black, Med. Red, Med. Wedgewood Blue, or Light Fawn trim. Optional cloth (shown) is available in Med. Red, Med. Wedgewood Blue, Light Fawn. Optional cloth low-back bucket seats (not shown) are also available on Lynx L.



- ☐ Reclining low-back bucket seats. Optional on LYNX GL and LYNX RS in cloth or vinyl. Colors: Black, Medium Red, Medium Wedgewood Blue, Light Fawn. Vinyl also available in Opal with Black, Medium Red, Medium Wedgewood Blue, or Light Fawn trim.



- ☐ Reclining low-back bucket seats in luxury velour cloth. Standard on LYNX LS. Colors: Black, Medium Red, Medium Wedgewood Blue, Light Fawn.



- ☐ Reclining high-back bucket seats. Standard on LYNX GL and LYNX RS in vinyl. Cloth optional. Colors: Black, Medium Red, Medium Wedgewood Blue, Light Fawn. Vinyl is also available in Opal with Black, Medium Red, Medium Wedgewood Blue, or Light Fawn trim.



- ☐ Reclining low-back bucket seats. Standard on LYNX GS in cloth. Vinyl optional at no extra charge. Colors: Black, Medium Red, Medium Wedgewood Blue, Light Fawn. Vinyl also available in Opal with Black, Medium Red, Medium Wedgewood Blue, or Light Fawn trim.



- ☐ Reclining low-back bucket seats. Optional on LYNX GL, LYNX RS, LYNX GS, and LYNX LS in shearling and leather (front seats only; rear seat vinyl).

## EXTERIOR COLOR CHOICES

### STANDARD COLORS for Lynx, L, GL, GS, and RS



☐ Black



☐ White



☐ Light Pewter Metallic



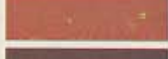
☐ Dark Pewter Metallic\*



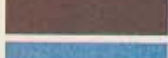
☐ Fawn\*



☐ Medium Yellow



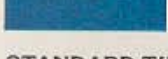
☐ Bright Red



☐ Medium Red

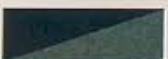


☐ Bright Blue Metallic\*



☐ Medium Blue Metallic

### STANDARD TU-TONES Lynx LS only



☐ Black/  
Dark Pewter Metallic



☐ Medium Fawn Metallic/  
Light Fawn Metallic



☐ Medium Red Metallic/  
Maroon Metallic



☐ Dark Blue Metallic/  
Bright Blue Metallic

### OPTIONAL GLAMOUR COLORS for Lynx, L, GL, and GS only



☐ Medium Fawn Metallic



☐ Light Spruce Metallic

### OPTIONAL TU-TONES for Lynx, L, GL, and GS only



☐ Dark Pewter Metallic/  
Light Pewter Metallic\*\*



☐ Medium Fawn Metallic/  
Fawn\*\*



☐ Medium Blue Metallic/  
Bright Blue Metallic\*\*

\*Not available on Lynx RS.

\*\*Not available on Villager.

NOTE: Due to occasional printing irregularities, the colors shown may vary from actual hues. Please see your Lincoln-Mercury Dealer for accurate color chips.

## YOUR CHOICE OF LYNX MODELS, WITH THEIR STANDARD FEATURES.



- ☐ LYNX 3-DOOR
- ☐ LYNX 5-DOOR

### STANDARD FEATURES ON ALL LYNXES: STANDARD FUNCTIONAL FEATURES

- Front-wheel drive
- 1.6L 2-bbl. 4-cylinder CVH (compound valve hemispherical) engine
- Solid-state ignition
- 4-speed manual overdrive transaxle with floor shift
- Self-adjusting clutch
- Manual front disc/rear drum brakes
- Manual rack-and-pinion steering
- MacPherson-strut front suspension with stabilizer bar
- Fully independent rear suspension
- P165/80R13 steel-belted radial tires
- P155/80D13 BSW spare tire
- 11.3 gallon fuel tank
- Maintenance-free 36-amp-hr battery
- Inside hood release
- Electric windshield washer/wiper
- Inertia seatback release (3-door only)
- Flash-to-pass headlamp feature

### STANDARD INTERIOR FEATURES

- Vinyl high-back bucket seats
- Folding rear seat
- 4-passenger seating capacity
- 2-spoke steering wheel
- Stalk-mounted controls
- Bronze cluster and radio trim appliques
- Day/night rearview mirror
- Color-keyed swivel sun visors
- Full door and quarter trim panels
- 10-ounce passenger compartment carpeting
- Black load floor cover
- Cargo area cover
- Front door courtesy light switches
- Coat hooks
- Stowage bins
- Coin trays
- Ashtray
- Cigarette lighter
- Glove box

### STANDARD EXTERIOR FEATURES

- Sealed-beam halogen headlamps
- Semi-styled steel wheels
- Black left-hand outside mirror
- Bright grille and drip moldings
- Front and rear short bumper end caps
- Wraparound taillights



- ☐ LYNX L 3-DOOR
- ☐ LYNX L 5-DOOR
- ☐ LYNX L STATION WAGON

Includes all Lynx standard features *plus* these additions and/or differences:

- AM radio (may be deleted for credit)
- Front and rear long bumper end caps with Argent accent stripe
- Bodyside accent paint stripes
- Bright door and window frame moldings
- Bright wheel hub covers, lug nuts, and trim rings
- Bright belt and wheel-lip moldings
- Bright left-hand outside mirror
- Black burloom trim and plastic quarter trim panel inserts in luggage compartment
- Tailgate ajar warning light (wagon)
- Power brakes (wagon)
- Black center pillar appliqué (3-door)
- Brushed aluminum center pillar appliqué (5-door and wagon)
- Taillights with bright bead (wagon)
- Color-keyed window-shade-type cargo area cover (wagon)
- Color-keyed 14-ounce load floor carpet (wagon)
- Quarter trim bin (wagon)
- Body color quarter window frames (5-door)
- Upgraded sound insulation
- "L" medallion



- ☐ LYNX GL 3-DOOR
- ☐ LYNX GL 5-DOOR
- ☐ LYNX GL STATION WAGON

Includes all Lynx L standard features *plus* these additions and/or differences:

- Reclining vinyl high-back bucket seats
- Color-keyed deluxe seat belts with tension relievers
- Deluxe seat and door trim
- Soft 4-spoke color-keyed steering wheel
- Dual visor vanity mirrors
- Console (includes molded-in cup holders and coin slots)
- Black front air dam
- Wide bodyside molding with Argent stripe
- Black taillamp surround molding (3-door and 5-door)
- Bumper rub strips with Argent stripe (front and rear)
- Bright window regulator handles
- Rear ashtray
- Color-keyed carpet trim on lower back panel of luggage compartment
- "GL" medallion



☐ LYNX GS 3-DOOR  
☐ LYNX GS 5-DOOR  
☐ LYNX GS STATION WAGON

Includes all Lynx GL standard features *plus* these additions and/or differences:

- Reclining low-back cloth bucket seats
- Digital clock
- Instrumentation Group (special instrument cluster with large round dials for speedometer and tachometer, smaller gauges for temperature and fuel, and a trip odometer)
- Interval windshield wipers
- Console with graphic warning display
- Woodtone cluster and radio trim covers
- 18-ounce passenger compartment carpeting
- Rear door courtesy light switches (5-door and wagon)
- Ashtray, glove box, dome/map lights
- Cargo compartment/engine compartment lights
- Glove box lock
- Power liftgate release (3-door and 5-door)
- Headlamp-on warning buzzer
- Roof assist handle
- Dual remote-control color-keyed sport mirrors
- Full styled steel wheels
- Bumper guards, front and rear
- Dual color bodyside paint stripes
- Deluxe sound insulation package
- "GS" medallion



☐ LYNX LS 3-DOOR  
☐ LYNX LS 5-DOOR  
☐ LYNX LS STATION WAGON

Includes all Lynx GS standard features *plus* these additions and/or differences:

- AM/FM stereo radio
- Electric rear window defroster
- Reclining low-back bucket seats in luxury velour cloth
- Velour cloth appliqué on door, 18-ounce carpeting on lower door
- Tu-Tone paint (may be deleted for credit)
- Burlled walnut woodtone texture on cluster, radio, and console appliques
- Bodyside and decklid tape stripe
- "LS" medallion



☐ LYNX RS 3-DOOR

Includes all Lynx standard features *plus* these additions and/or differences:

- AM radio (may be deleted for credit)
- Handling Package (includes upsized front stabilizer bar, heavy-duty shock absorbers, stiffer front and rear springs)
- Reclining high-back bucket seats with deluxe vinyl seat trim
- Deluxe color-keyed seat belts
- Deluxe door trim panels w/bright accents
- Black 4-spoke soft steering wheel
- Dual visor vanity mirrors
- Instrumentation Group (special instrument cluster with large round dials for speedometer and tachometer, smaller dials for temperature and fuel gauges, and a trip odometer)
- Console with graphic warning display
- Black load floor carpeting
- Rear ashtray
- Roof assist handle
- Black dual remote-control sport mirrors
- Full-styled steel wheels/bright trim rings
- Bumper rub strips with Argent stripe
- Blackout grille treatment
- Black rocker panel paint
- Black headlamp frames, windshield molding
- Black taillamp surround molding
- Flat black center-pillar appliqué with louvers
- Blackout treatment: rear window and drip moldings, window frame moldings, license plate area, door handles, and lock cylinders
- Black front and rear bumpers
- Upgraded sound insulation package
- Special "RS" tape stripe/decal treatment
- Front and rear long bumper end caps with Argent stripe
- Black plastic molded quarter trim inserts in luggage compartment
- Black carpet trim on back panel of luggage compartment
- Black front air dam
- Bright wheel lug nuts and hub covers
- "RS" medallion

## YOUR CHOICES OF OPTIONS, ALONG WITH SOME STANDARD FEATURES.

	LYNX	L	GL	GS	LS	RS
<input type="checkbox"/> Air Conditioning	O	O	O	O	O	O
<input type="checkbox"/> Battery, Heavy-Duty 48-Amp-Hr Maint.-Free	O	O	O	O	O	O
<input type="checkbox"/> Bumper Guards—Front and Rear	O	O	O	S	S	O
<input type="checkbox"/> Bumper Rub Strips—Front and Rear	O	O	S	S	S	S
<input type="checkbox"/> Cargo Carrier, Roof-Mounted, Covered (Dealer-installed)	O	O	O	O	O	O
<input type="checkbox"/> Clock, Digital	O	O	O	S	S	O
<input type="checkbox"/> Console with Graphic Warning Display	O	O	O	S	S	S
<input type="checkbox"/> Defroster, Electric Rear Window	O	O	O	O	S	O
<input type="checkbox"/> Extended Service Plan (See Page 20)	O	O	O	O	O	O
<input type="checkbox"/> Heater, Engine Block	O	O	O	O	O	O
<input type="checkbox"/> Luggage Rack, Roof-Mounted* (Std. on Villager)	O	O	O	O	O	O
<input type="checkbox"/> Mirrors, Dual	O	O	O	S	S	S
<input type="checkbox"/> Remote-Control Molding, Vinyl Bodyside	O	O	NA	NA	NA	O
<input type="checkbox"/> Paint, Glamour	O	O	O	O	O	NA
<input type="checkbox"/> Paint, Tu-Tone	O	O	O	O	S	NA
<b>POWER</b>						
<input type="checkbox"/> Power Brakes* <sup>1</sup>	O	O	O	O	O	O

	LYNX	L	GL	GS	LS	RS
<input type="checkbox"/> Power Liftgate Release*	O	O	O	S	S	O
<input type="checkbox"/> Power Steering	O	O	O	O	O	O
<input type="checkbox"/> Protection, Lower Bodyside Vinyl Coating	O	O	O	O	O	O
<b>RADIOS</b>						
<input type="checkbox"/> AM (May be deleted for credit)	O	S	S	S	NA	S
<input type="checkbox"/> AM/FM Monaural	O	O	O	O	NA	O
<input type="checkbox"/> AM/FM Stereo	O	O	O	O	S	O
<input type="checkbox"/> AM/FM Stereo with Cassette	O	O	O	O	O	O
<input type="checkbox"/> AM/FM Stereo with 8-Track	O	O	O	O	O	O
<input type="checkbox"/> Dual Rear Speakers (with AM or AM/FM Monaural Radios)	O	O	O	O	S	O
<input type="checkbox"/> Premium Sound System (See below)	O	O	O	O	O	O
<input type="checkbox"/> Roof Air Deflector (Wagon only)	NA	O	O	O	O	NA
<input type="checkbox"/> Roof, Flip-Up, Open-Air*	O	O	O	O	O	O
<input type="checkbox"/> Seat Belts, Deluxe	O	O	S	S	S	S
<input type="checkbox"/> Speed Control	O	O	O	O	O	O
<input type="checkbox"/> Tinted Glass	O	O	O	O	O	O
<input type="checkbox"/> Wheel Trim Rings	O	S	S	S	S	S
<input type="checkbox"/> Windows, Manual Pivoting Front Vent	O	O	O	O	O	O
<input type="checkbox"/> Windows, Remote-Control Quarter <sup>2,4</sup>	O	O	O	O	O	O
<input type="checkbox"/> Windshield Wipers, Interval	O	O	O	S	S	O
<input type="checkbox"/> Wiper/Washer, Rear Window	O	O	O	O	O	O

### 1. SPEED CONTROL.

Maintains the speed you select, lessens fatigue on long trips. Includes 4-spoke "soft"-feel steering wheel and "resume" feature.



### 2. AM/FM STEREO RADIO WITH CASSETTE TAPE.

Lynx offers five radio choices (see above). Add optional Premium Sound System to any of the



stereo radios for greatly improved sound quality. This System includes dual rear premium speakers and power amplifier.

### 3. REAR WINDOW WIPER/WASHER.

Improves rearview visibility in rain or snow.

1.

2.

3.

4.



4. WHEELS. Shown left, cast aluminum spoke wheels (optional all models except Lynx); and right, styled steel wheels (standard on Lynx GS, Lynx LS, and Lynx RS).

LYNX L GL GS LS RS

# OPTIONAL PACKAGES

<input type="checkbox"/> <b>APPEARANCE PROTECTION GROUP</b> Includes door-edge guards, front carpet floor mats, glove box lock (standard on Lynx GS and Lynx LS), and license plate frame(s).	O	O	O	O	O	O
<input type="checkbox"/> <b>HANDLING PACKAGE</b> Includes upsized front stabilizer bar, heavy-duty shock absorbers, and stiffer front and rear springs.	O <sup>3,7</sup>	O <sup>3</sup>	O <sup>3</sup>	O	O	S
<input type="checkbox"/> <b>INSTRUMENTATION GROUP</b> Special instrument cluster w/large round dials for speedometer and tachometer, smaller dials for temperature and fuel gauges, and a trip odometer.	O	O	O	S	S	S
<input type="checkbox"/> <b>LIGHT GROUP</b> Includes glove box light, dome/map light, cargo compartment light, engine compartment light, ashtray light, "headlamp-on" warning buzzer, rear door and liftgate/hatchback courtesy light switch.	O	O	O	S	S	O

LYNX L GL GS LS RS

# VILLAGER WOODTONE OPTION<sup>5</sup>

Includes woodtone trim, brown bodyside molding with black insert, woodtone rails with bright edges, and roof-mounted luggage rack.

# ENGINES/TRANSMISSIONS

<input type="checkbox"/> 1.6L 2-bbl. 4-Cyl. Engine with 4-Speed Manual Overdrive Transaxle	S	S	S	S	S	S
<input type="checkbox"/> 1.6L 2-bbl. 4-Cyl. Engine with 4-Speed Sport Close Ratio Transaxle	O	O	O	O	O	O
<input type="checkbox"/> 1.6L 2-bbl. 4-Cyl. Engine with Split-Torque Automatic Trans.	O	O	O	O	O	O

# RADIAL TIRES AND WHEELS

<input type="checkbox"/> P165/80R13 BSW	S	S	S	S	S	S
<input type="checkbox"/> P165/80R13 WSW	O	O	O	O	O	O
<input type="checkbox"/> Semi-Styled Steel Wheels	S	S	S	NA	NA	NA
<input type="checkbox"/> Full-Styled Steel Wheels*	O <sup>6,7</sup>	O <sup>6</sup>	O <sup>6</sup>	S	S	S
<input type="checkbox"/> Cast Alum. Spoke Wheels	O	O	O	O	O	O

BSW—Black Sidewall. WSW—White Sidewall.  
S—Standard O—Optional NA—Not Available

\*This equipment is subject to additional ordering requirements or limitations. Please consult your Salesperson for details.

<sup>1</sup>Standard on station wagon. <sup>2</sup>Available on 3-door only. <sup>3</sup>Includes styled steel wheels. <sup>4</sup>Late availability. <sup>5</sup>Available on station wagon only. <sup>6</sup>Available with Handling Package only. <sup>7</sup>Includes trim rings.

5. AIR CONDITIONING. Keep cool, even on hot, humid days.

6. MANUAL PIVOTING FRONT VENT WINDOWS. This comfort feature allows you to control the direction and velocity of the air flow.

7. FLIP-UP OPEN-AIR ROOF. Let the sunshine, fresh air, and the moonlight in with this easy-to-handle, easy-to-like option.

6.



**power**

POWER BRAKES\*  
POWER STEERING  
POWER LIFTGATE  
RELEASE\*

\*Standard on some models.

8. ELECTRIC REAR WINDOW DEFROSTER. With just the flip of a switch, you have an effective way to remove fog or frost. (Standard on Lynx LS.)

8.



5.



7.

## LYNX SPECIFICATIONS

	Lynx 3-Door	Lynx 5-Door	Lynx Wagon
Wheelbase	94.2"	94.2"	94.2"
Turning Diameter	33.4'	33.4'	33.4'
Overall Length	163.9"	163.9"	165.0"
Overall Height	53.3"	53.3"	53.3"
Overall Width	65.9"	65.9"	65.9"
Wheel Tread			
—Front	54.7"	54.7"	54.7"
—Rear	56.0"	56.0"	56.0"
Headroom			
—Front	38.0"	38.0"	38.0"
—Rear	37.4"	37.4"	38.2"
Legroom			
—Front	41.5"	41.5"	41.5"
—Rear	35.3"	35.3"	35.3"
Shoulder Room			
—Front	51.4"	51.4"	51.4"
—Rear	51.7"	51.1"	51.1"
Hiproom			
—Front	52.2"	52.2"	52.2"
—Rear	44.1"	44.5"	44.5"
Luggage Capacity/ Cargo Volume (Cu. Ft.)*	25.9	25.9	57.7
Fuel Capacity (Gals.)	11.3	11.3	11.3
Curb Weight, 49 States (Lbs.)	2014	2076	2118

\*With rear seat folded down.

## GAS MILEAGE

47 EST. HWY. **31**\* EPA EST. MPG

\*Not applicable to units with power steering or air conditioning. Estimate for comparison. Your mileage may differ depending on speed, distance and weather. Actual highway mileage lower.

## SAFETY FEATURES

Lynx has Ford Lifeguard Design Safety Features for your protection: a safety-designed roof, a safety-designed front end, a steel beam in each side door, an energy-absorbing steering column and steering wheel, corrosion-resistant brakes, dual-designed braking system, safety rim wheels and more.

## MAINTENANCE —LESS THAN AN HOUR A YEAR

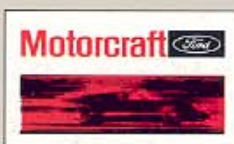
Lynx was designed to keep your cost of driving down. For example, Lynx has a chassis that's lubed for life, 30,000-mile spark plugs, self-adjusting brakes and clutch, maintenance-free battery and more. Scheduled maintenance—periodic servicing as specified in the owner's manual for the first 5 years or 50,000 miles—comes to less than one hour for each year of driving.

## CORROSION PERFORATION WARRANTY

Ford Motor Company offers a limited three-year corrosion perforation warranty excluding exhaust system components on all new 1982 Lincoln-Mercury automobiles. And at no cost to you.

The warranty states that any sheet metal part which, in normal use, develops perforation from corrosion within three years of retail delivery or first use will be repaired or replaced free of charge by the selling Dealer after inspection by a Ford representative. Exhaust system components or parts which develop corrosion perforation caused by accidents or other damage are not covered.

This warranty valid only in the 50 United States.



## FOR SURE

and approved parts including a dependable Motorcraft battery, shock absorbers, spark plugs, long life oil filters, and motor oil. For continued top performance, be sure to specify genuine Motorcraft parts whenever replacement is necessary.



Ford Motor Company's optional Extended Service Plan covers major components on new Mercury cars for longer than the vehicle's basic warranty. The cost is so moderate for the protection you get that it could pay for itself the first time you need it. Ask your Lincoln-Mercury Dealer for complete details of the Plan, which is available on cars sold and normally operated in the 50 United States and Canada.

## FORD-PAID REPAIR PROGRAMS AFTER THE WARRANTY PERIOD

Sometimes Ford Motor Company offers adjustment programs to pay all or part of the cost of certain repairs. These programs are intended to assist owners and are in addition to the warranty or to required recalls. Ask Ford Motor Company or your Lincoln-Mercury Dealer about such programs relating to your Ford or Lincoln-Mercury vehicle.

To get copies of any adjustment program for your vehicle or the vehicle of interest to you:

## QUALITY REPLACEMENT PARTS FROM FORD

Your new Mercury Lynx comes equipped with factory-engineered

Call Ford toll-free at 1-800-241-3673. Alaska and Hawaii, call 1-800-243-3711.

In Georgia, call 1-800-282-0959 or write Ford at  
Ford Customer Information System  
Post Office Box 95427  
Atlanta, GA 30347

We'll need your name and address; year, make, model, and vehicle identification number, as well as engine size; and whether you have a manual or automatic transmission.

## TECHNICAL SERVICE BULLETINS

All vehicles need repairs during their lifetime. Sometimes Ford issues Technical Service Bulletins (TSBs) and easy-to-read explanations describing unusual engine or transmission conditions which may lead to costly repairs, the recommended repairs, and new repair procedures. Often a repair now can prevent a more serious repair later. Ask Ford Motor Company or your Lincoln-Mercury Dealer for any such TSBs and explanations relating to your Ford or Lincoln-Mercury vehicle.

To get copies of these Technical Service Bulletins and explanations for your vehicle or the vehicle of interest to you:

Call Ford toll-free at  
1-800-241-3673.  
Alaska and Hawaii, call  
1-800-243-3711.

In Georgia, call 1-800-282-0959 or write Ford at

Ford Customer Information System  
Post Office Box 95427  
Atlanta, GA 30347

We'll need your name and address; year, make, model, and vehicle identification number, as well as engine size; and whether you have a manual or automatic transmission.

Specifications and descriptions used were in effect when this publication was approved for printing. Lincoln-Mercury Division reserves the right to discontinue options at any time, or change specifications, equipment or designs without notice and without incurring obligation. Standard and optional equipment listed is subject to change. Some features described are optional at extra cost. Some options are required in combination with other options. Availability of some features may be subject to a slight delay.

Specifications in this brochure cover those cars built for sale in all states except California, Oregon, Washington, Alaska, and Hawaii.

Buy or lease your Lynx from your Lincoln-Mercury Dealer.

Litho in U.S.A. (549M) 10/81 Form No. P-8117 Rev.

# MERCURY LYNX

LINCOLN-MERCUY DIVISION

