

A close-up photograph of the front of a red Lincoln-Mercury LN7 '82. The image focuses on the headlight and grille area. The headlight is rectangular with a chrome bezel and a clear lens. The grille is black with a red border. The word "MERCUARY" is visible on the grille. The car's body is painted a vibrant red. The text "LN7 '82" is superimposed at the top in a white serif font.

LN7 '82

MERCUARY

FROM LINCOLN-MERCURY



STARTING TODAY, THERE IS  
SOMETHING BEYOND THE  
FUEL-EFFICIENT  
AUTOMOBILE.





BEYOND INTERIOR SPACE  
AND COMFORT.

Shown here, reclining low-back bucket seats in optional leather with vinyl trim. Reclining low-back bucket seats in vinyl are standard. Other standard features include: soft door trim panels with map pockets; center console with floor shift;

sport steering wheel; deep cut-pile carpeting; driver and passenger visor vanity mirrors; electronic digital clock; power liftgate release; pivoting map light; and glove box, cargo, and engine compartment lights.



BEYOND PRECISION  
RESPONSE AND CONTROL.



*Including such standard features as sport steering wheel, tachometer, temperature gauge, trip odometer, ammeter, oil pressure gauge, and stalk-mounted wiper/washer controls, shown here.*

*Also standard are front-wheel drive, rack-and-pinion steering, power brakes, steel-belted radial tires, and a four-wheel fully independent suspension system specially tuned for sport handling.*

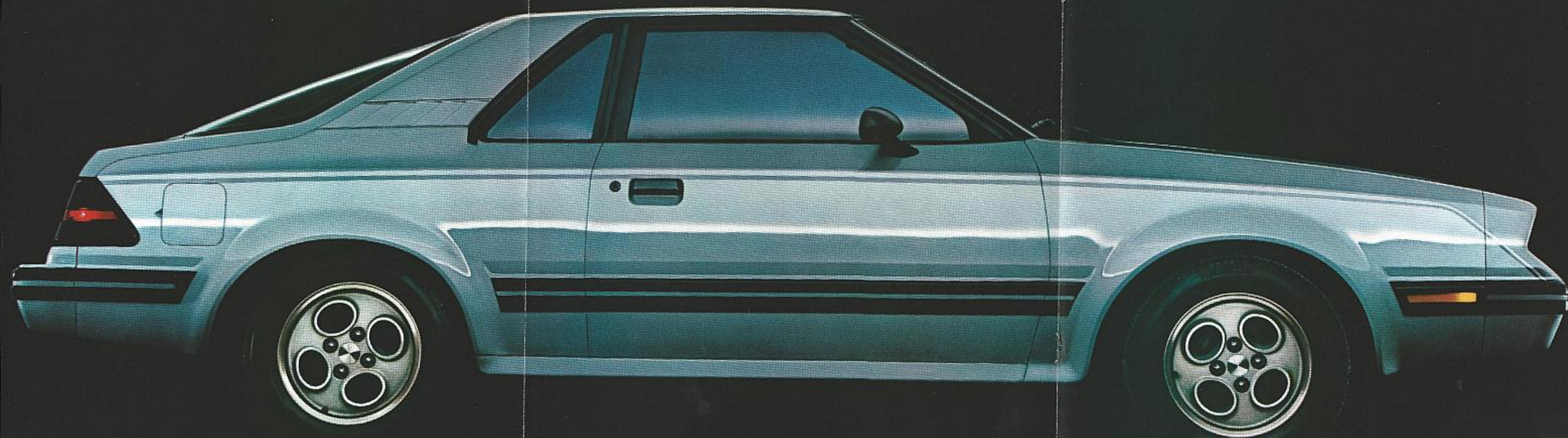


BEYOND EXPECTATION.

46  
EST.  
CITY

29  
EPA  
EST.  
Hwy  
MPG

\*Compare to estimated MPG of other cars. Your mileage may differ, depending on speed, weather conditions, and trip length. Actual highway mileage lower.



LN7 in Medium Blue Metallic over Bright Blue Metallic, with optional TR Sport aluminum wheels.



## LN7. SHAPED FOR THE WAY WE LIVE TODAY.

Come drive a road you've never traveled before. In a Mercury LN7. It has **29** EPA\* estimated MPG, 46 highway estimate. But here's the kicker: You get that kind of mileage along with sport handling and stunning good looks. It's a car to change forever your ideas about what economy means.

LN7. Designed in such a way that you need spend only about an hour a year on recommended scheduled maintenance for the first 5-year or 50,000-mile period. That comes to about \$170\*\*—for an average of only about \$34 a year.

LN7 is a two-passenger car, with twin bucket seats up front and a center console. And, in back, lots of room for

suitcases and things.

One of LN7's most remarkable achievements is its advanced aerodynamic styling. Not just for beauty's sake, but for a more efficient shape. The sloping hood, wedge front, and distinct bubbleback help produce the most aerodynamic car built in America. This sleek design contributes to LN7's astonishing gas mileage.

LN7. Engineered with some of the most advanced technology of our times. And that translates into something that's been on the endangered species list until now: the fun of driving. There's front-wheel drive for traction; an advanced hemispherical head 1.6 liter two-barrel

engine which gives you extraordinary fuel efficiency; a smooth manual transaxle with a thrifty overdrive fourth gear; rack-and-pinion steering for precise control; and a four-wheel, fully independent suspension system specially tuned for sport handling and smooth riding.

But hold on. There's even more. Check out the optional sophisticated TR Performance Suspension. It's made up of heavy-duty components, computer-tuned to Michelin TRX radial tires and TR-Sport wheels. What you get is more of a sport feel—tighter handling, a firmer sense of the road.

There's still more. LN7 offers an unexpectedly high level of standard

features. Not just the usual AM radio† and heater, but power brakes; steel-belted radial tires; an electric defroster in the rear window; and tachometer, temperature gauge, oil pressure gauge, ammeter—all the gauges a driver needs. Plus the little touches that make life easier: a power switch that opens the rear hatch; visor vanity mirrors for driver and passenger; remote-control sport mirrors, right- and left-hand sides; and a light in the glove box, in the cargo compartment, and under the hood. In other words, LN7 comes fully equipped. What's optional (and there are some dandy ones—see page 12) is only what you want to add for your personal pleasure.

But words only take you so far. To see how far LN7 goes beyond the expected, inspect it for yourself. Run through the gears...smooth. Hear the throaty, specially tuned exhaust. Feel the way it responds. Because the best way to get acquainted with LN7's advanced technology (and ride and handling characteristics) is to slip behind the wheel, take it out on the road, and drive it yourself—beyond the buildings, beyond the hills. Beyond expectation.

LN7. High style and high mileage in a real driver's car.

**46** EST.  
HWY.

**29** EPA\*  
EST.  
MPG

\*Compare to estimated MPG of other cars. Your mileage may differ, depending on speed, weather conditions, and trip length. Actual highway mileage lower.

\*\*Based on recommended scheduled maintenance which is subject to change, Ford Labor Time Standards, current retail parts prices, and an hourly labor rate of \$28. Some areas will be higher, some lower.

†May be deleted for credit.

Some of the equipment shown may be available only at extra cost. Please see pages 12 thru 14 for specific information regarding standard and optional equipment.

### STANDARD CARGO AREA.

Features 28.2 cubic feet of cargo space (with standard low-back reclining bucket seats). It's fully trimmed with 12-ounce color-keyed carpeting along the cargo floor; four vinyl rub strips; and a "snap-in" type removable cargo cover (not shown) which conceals your valuables and can be stored when not in use. A chrome-plated restraining bar secures your luggage behind the front seat.



An important contributor to LN7's exceptional gas mileage is its advanced aerodynamic styling. It's the most aerodynamic car built in America. LN7. Aerodynamics. Where beauty and efficiency become one.



## MORE STANDARD FEATURES THAN YOU'D EXPECT...

### STANDARD EXTERIOR FEATURES

- Bubbleback-style rear hatch
- Rectangular halogen headlamps
- Black dual remote-control sport mirrors (right-hand mirror\*)
- Fully styled steel wheels with trim rings
- Rear pillar louvers
- Bright exposed exhaust
- Sporty-tuned exhaust (manual transaxle only)
- Wide bodyside molding
- Soft black bumpers
- Wraparound taillights
- Bodyside accent stripes

### STANDARD INTERIOR FEATURES

- AM radio\*
- Electronic digital clock\*
- Vinyl low-back or high-back reclining bucket seats
- Deluxe color-keyed seat belts with tension reliever
- Deluxe soft door trim panel with map pocket
- Driver and passenger side visor vanity mirrors
- Black sport steering wheel
- Stalk-mounted controls
- Color-keyed swivel sun visors
- Day/night rearview mirror
- Soft-feel black instrument panel with instrumentation group: tachometer, temperature gauge, trip odometer
- Console: includes ammeter, oil pressure gauge, door ajar warning light, low washer fluid warning light, ashtray, and cigarette lighter
- Locking glove box
- Stowage bins
- Deep cut-pile color-keyed carpeting in passenger compartment
- 14-ounce needled color-keyed cargo floor carpeting
- Front-door courtesy light switches
- Light group: includes glove box light, pivoting dome/map light, cargo compartment light, engine compartment light, ashtray light, and "headlamp-on" warning buzzer\*
- Passenger-side roof assist handle
- Cargo area cover
- Chrome-plated cargo restraining bar
- Coat hooks

### STANDARD FUNCTIONAL FEATURES

- Front-wheel drive
- Solid-state ignition system
- 1.6 liter 2-barrel 4-cylinder CVH engine
- Four-speed manual transaxle with fourth gear overdrive and floor shift
- Self-adjusting clutch
- Power front disc/rear drum brakes
- Manual rack-and-pinion steering
- MacPherson-strut front suspension
- Front stabilizer bar
- Fully independent modified MacPherson strut rear suspension
- P165/80R13 BSW steel-belted radial tires with European-type wraparound tread
- Economy spare tire
- Heavy-duty maintenance-free 48 amp-hr battery\*
- Tinted glass, all windows\*
- Electric rear window defroster
- Inside hood release
- Power liftgate release
- Interval windshield wipers
- Inertia seatback release
- Flash-to-pass headlamp feature
- 11.3-gallon fuel tank
- Engineered sound insulation
- Electronic voltage regulator

\*May be deleted for credit.

## AND TEMPTING OPTIONS, TOO.

- ☐ Air conditioning
- ☐ Appearance Protection Group: includes black door edge guards, color-keyed front floor mats, and license plate frame(s)
- ☐ Automatic transaxle\*\*
- ☐ Engine immersion heater (cord pulls out from under grille, plugs into nearest electrical outlet; heating element in engine oil warms up engine under extremely cold weather conditions)
- ☐ Extended Service Plan (see page 15)
- ☐ Heavy-duty charging system (60 amp alternator)
- ☐ Lower bodyside protection (special vinyl paint on lower body panels to resist chipping caused by stones or other objects hitting the panels)
- ☐ Luggage rack, deluxe, roof-mounted
- ☐ Power steering
- ☐ Radios
  - ☐ AM/FM monaural
  - ☐ AM/FM stereo
  - ☐ AM/FM stereo with 8-track tape player
  - ☐ AM/FM stereo with cassette tape player
  - ☐ Premium Sound System
- ☐ Roof, flip-up/open air
- ☐ Speed control with resume feature
- ☐ Tires
  - P165/80R13 raised-letter whitewall radial
- ☐ TR Performance Packages: Includes Michelin TRX steel-belted radial tires (P165/70R365 BSW); TR Performance Suspension which consists of a larger front stabilizer bar, heavy-duty shock absorbers, stiffer bushings and front springs; and either TR-Sport steel or TR-Sport aluminum wheels

\*\*This equipment is subject to additional ordering requirements or limitations. Please consult your Dealer for details.

### 1. WHEELS AND TIRES.

Dress up your LN7 with your choice of wheels and tires or put it to the test with the TR Performance Packages.

- a. Standard fully styled steel wheel shown with optional raised-letter whitewall tire.
- b. Optional cast aluminum "spoked" wheel shown with standard blackwall tire. (Also available with white-lettered tires.)

### TR PERFORMANCE WHEELS.

(Included in TR Performance Package.) Package includes Michelin TRX tires and TR Performance Suspension.

- c. TR-Sport aluminum wheel.
- d. TR-Sport styled steel wheel.

### 2. AM/FM STEREO RADIO WITH CASSETTE.

One of four optional radio choices. Add optional Premium Sound System to any of the stereo radios for improved sound quality. Premium Sound System includes dual rear premium speakers and power amplifier.

### 3. FLIP-UP/OPEN AIR ROOF.

Has pattern in the glass to act as sunshade. Let the sunshine, fresh air, and moonlight in with this easy-to-handle, easy-to-love option.

### 4. SPEED CONTROL.

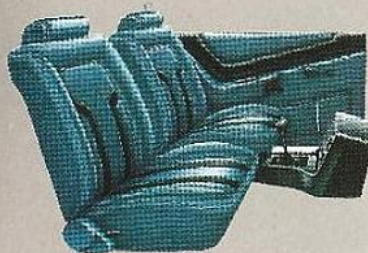
Maintains the speed you select, lessens fatigue on long trips. Includes deluxe black four-spoke steering wheel and "resume" feature.

### 5. AIR CONDITIONING.

Manual temperature control. Includes two center instrument panel vents. For added comfort, especially on those uncomfortably hot days.



## INTERIOR SEATING CHOICES



- ☐ Standard low-back reclining bucket seats in vinyl. Colors: Black, Medium Wedgewood Blue, Bittersweet, Medium Red, Light Fawn, Opal.

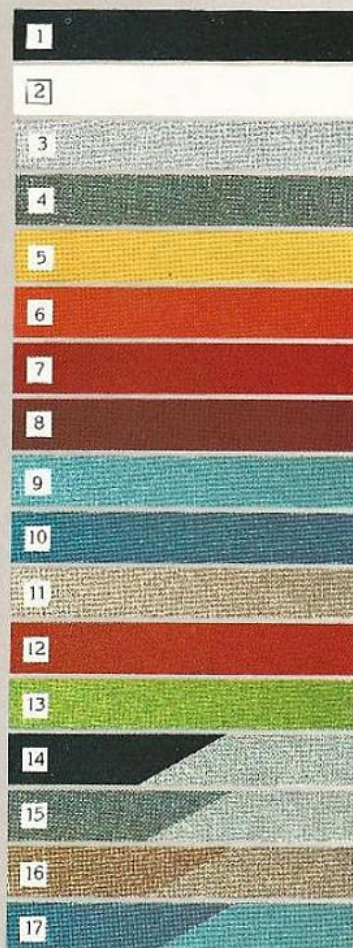


- ☐ Vinyl high-back reclining bucket seats. No-extra-cost option. Colors: Black, Medium Wedgewood Blue, Bittersweet, Medium Red, Light Fawn, Opal.



- ☐ Optional low-back reclining bucket seats in cloth, leather or shearling with leather trim. Colors: Black, Medium Wedgewood Blue, Bittersweet, Medium Red, Light Fawn, Opal. Shearling is trimmed in Black or Light Fawn.

## EXTERIOR COLOR CHOICES



### STANDARD COLORS

- ☐ 1. Black
- ☐ 2. White
- ☐ 3. Silver Metallic
- ☐ 4. Medium Grey Metallic
- ☐ 5. Medium Yellow
- ☐ 6. Bright Bittersweet
- ☐ 7. Bright Red
- ☐ 8. Medium Red
- ☐ 9. Bright Blue Metallic
- ☐ 10. Medium Blue Metallic

### OPTIONAL GLAMOUR COLORS

- ☐ 11. Light Fawn Metallic
- ☐ 12. Medium Bittersweet Metallic
- ☐ 13. Bright Lime Green Metallic

### OPTIONAL TU-TONES

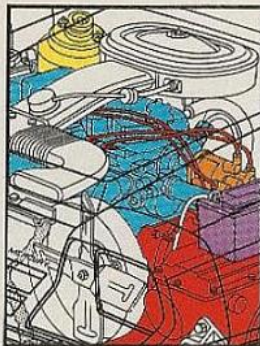
- ☐ 14. Black/Silver Metallic
- ☐ 15. Medium Grey Metallic/Silver Metallic
- ☐ 16. Medium Fawn Metallic/Light Fawn Metallic
- ☐ 17. Medium Blue Metallic/Bright Blue Metallic

NOTE: Due to occasional printing irregularities, the colors shown may vary from actual hues. Please see your Lincoln-Mercury Dealer for accurate color chips.

## LN7's ADVANCED ENGINEERING.

### MAINTENANCE—LESS THAN AN HOUR A YEAR.\*

One of the most dramatic examples of LN7's advanced technology is the way it's engineered to keep your costs down. For example, LN7 has a heavy-duty, maintenance-free battery, 30,000-mile spark plugs, self-adjusting brakes and clutch. The chassis is lubed for life. Scheduled maintenance on LN7 will average less than one hour per year. Consider: This means that during the first five years or 50,000 miles, based on current prices, your scheduled maintenance costs are projected to total approximately \$170. That's averaging only about \$34 a year.



### ENGINE.

LN7's 1.6 liter, four-cylinder engine has a sophisticated compound valve hemispherical (CVH) combustion chamber design and overhead cam valve train. It achieves remarkable fuel-efficiency.

### FRONT-WHEEL DRIVE.

For traction on snow and wet roads. Space-efficient front-wheel-drive design also allows more passenger room by reducing the size of the conventional drive shaft tunnel.

### POWER BRAKES.

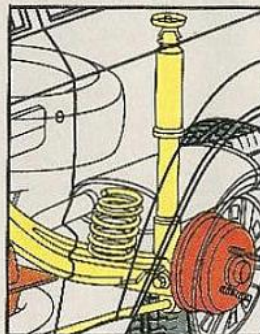
LN7 has a split-diagonal braking system. In the event of a partial system failure, you still have front and rear braking capability for controlled braking stops.

\*Based on recommended scheduled maintenance which is subject to change, Ford Labor Time Standards, current retail parts prices, and an hourly labor rate of \$28. Some areas will be higher, some lower.



### TRANSAXLE.

LN7 features an innovative, smooth-shifting four-speed manual transaxle with an overdrive fourth gear which permits fewer engine revolutions at cruising speeds than with a conventional transmission. A compact, innovative, three-speed automatic transaxle is optional. Its revolutionary "splitter" gear set helps eliminate slippage and attain significantly better fuel efficiency than in less sophisticated designs.



### INDEPENDENT FOUR-WHEEL SUSPENSION.

LN7's four-wheel, fully independent suspension system provides a smooth ride. And the large front stabilizer bar and stiff shock valving provide the sure-footed handling you expect in a sporty car.

### SAFETY FEATURES.

LN7 has Lifeguard Design Safety Features for your confidence and protection: a safety-designed roof, safety-designed front and rear ends, steel guard rails in side doors, energy-absorbing steering column and steering wheel, unitized body construction, corrosion-resistant brake lines, dual-diagonal braking system, safety rim wheels, and more.



## INSIDE LN7

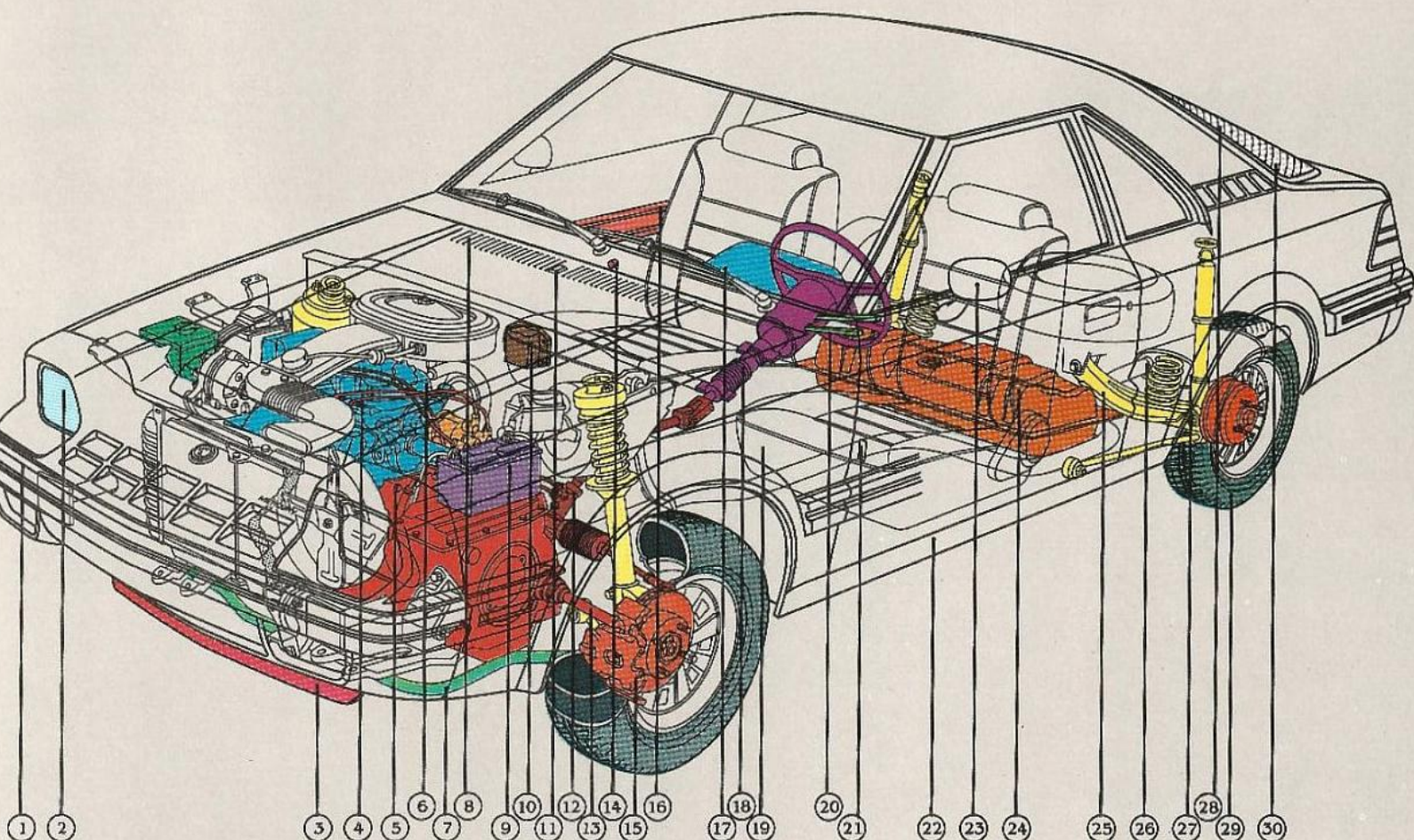
1. Soft urethane bumpers.
2. Halogen sealed-beam headlights provide brighter, whiter light than conventional sealed beams.
3. Valance panel and air dam to improve aerodynamics.
4. Easily accessible spark plugs.
5. Final-drive axle ratio: 3.59:1 (manual transaxle); 3.31:1 (automatic transaxle).
6. Four-cylinder overhead cam engine.
7. Front stabilizer bar.
8. Flow-Thru ventilation with three blower speeds.
9. Heavy-duty maintenance-free battery.
10. Solid-state ignition system.
11. Fluidic windshield washer system designed for efficient cleaning action.
12. Rack-and-pinion steering for precise ready response.
13. Front-wheel drive.
14. Power liftgate release control.
15. Power front disc and rear drum brakes. Split-diagonal braking system.
16. Steel guard rails in side doors.
17. Soft instrument panel.
18. Energy-absorbing steering wheel and column.
19. Sound insulation throughout, for a quiet ride.
20. Stalk-mounted control levers for turn signals, horn, headlight dimmer with flash-to-pass feature, and

- windshield wiper/washer.
21. Inside hood release.
22. Unitized body construction.
23. Dual remote-control sport mirrors.
24. 11.3-gallon fuel tank.
25. Four-wheel independent suspension system.
26. Sporty-tuned exhaust.
27. Hydraulic, telescoping shock absorbers help provide a smooth ride on bumpy roads.
28. Electric rear window defroster.
29. P165/80R13 BSW steel-belted radial tires with European wraparound tread.
30. Bubbleback-style rear window.

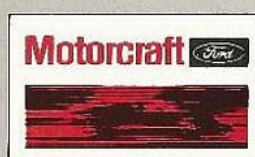
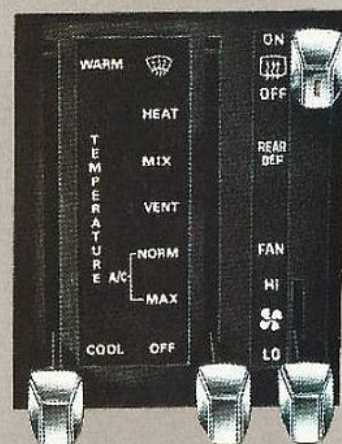
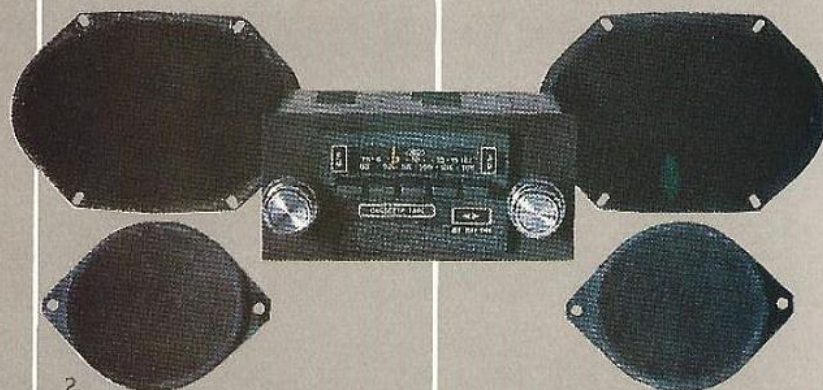
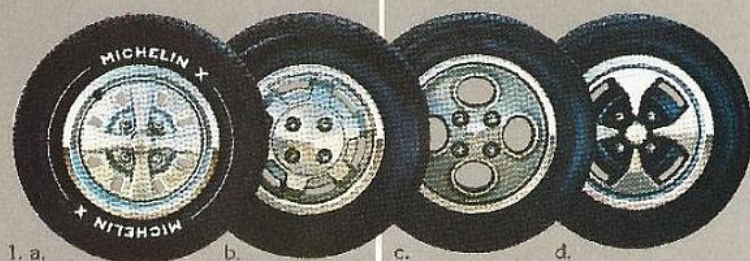
## LN7 SPECIFICATIONS.

Wheelbase	94.2"
Turning Diameter	33.9'
Overall Length	170.3"
Overall Height	50.5"
Overall Width	65.9"
Wheel Tread	
—Front	54.7"
—Rear	56.0"
Headroom	37.0"
Legroom	41.7"
Shoulder Room	51.3"
Hiproom	50.2"
Cargo Volume (Cu. Ft.)	28.2*
Fuel Capacity (Gals.)	11.3
Curb Weight (Lbs.)	2149

\*31.9 cu. ft. with no-extra-cost option high-back bucket seats.







## ...FOR SURE

### QUALITY REPLACEMENT PARTS FROM FORD

Your new Mercury LN7 comes equipped with factory-engineered and approved parts including a dependable Motorcraft battery, shock absorbers, spark plugs, long life oil filters, and motor oil. For continued top performance, be sure to specify genuine Motorcraft parts whenever replacement is necessary.



Ford Motor Company's optional Extended Service Plan covers major components on new Mercury cars for longer than the vehicle's basic warranty. The cost is so moderate for the protection you get that it could pay for itself the first time you need it. Ask your Lincoln-Mercury Dealer for complete details of the Plan, which is available on cars sold and normally operated in the 50 United States and Canada.

### FORD-PAID REPAIR PROGRAMS AFTER THE WARRANTY PERIOD.

Sometimes Ford Motor Company offers adjustment programs to pay all or part of the cost of certain repairs. These programs are intended to assist owners and are in addition to the warranty or to required recalls. Ask Ford Motor Company or your Lincoln-Mercury Dealer about such programs relating to your Ford or Lincoln-Mercury vehicle.

To get copies of any adjustment program for your vehicle or the vehicle of interest to you:

Call Ford toll-free at  
1-800-241-3673.

Alaska and Hawaii, call  
1-800-243-3711.

In Georgia, call 1-800-282-0959

or write Ford at  
Ford Customer Information  
System  
Post Office Box 95427  
Atlanta, GA 30347

We'll need your name and address; year, make, model, and vehicle identification number as well as engine size; and whether you have a manual or automatic transmission.

### TECHNICAL SERVICE BULLETINS

All vehicles need repairs during their lifetime. Sometimes Ford issues Technical Service Bulletins (TSBs) and easy-to-read explanations describing unusual engine or transmission conditions which may

lead to costly repairs, the recommended repairs, and new repair procedures. Often a repair now can prevent a more serious repair later. Ask Ford Motor Company or your Lincoln-Mercury Dealer for any such TSBs and explanations relating to your Ford or Lincoln-Mercury vehicle.

To get copies of these Technical Service Bulletins and explanations for your vehicle or the vehicle of interest to you:

Call Ford toll-free at  
1-800-241-3673.

Alaska and Hawaii, call  
1-800-243-3711.

In Georgia, call 1-800-282-0959

or write Ford at  
Ford Customer Information  
System  
Post Office Box 95427  
Atlanta, GA 30347

We'll need your name and address; year, make, model, and vehicle identification number, as well as engine size; and whether you have a manual or automatic transmission.

### CORROSION PERFORATION WARRANTY

Ford Motor Company offers a limited three-year corrosion perforation warranty excluding exhaust system components on all new 1982 Lincoln-Mercury automobiles. And at no cost to you.

The warranty states that any part which, in normal use, develops perforation from corrosion within three years of retail delivery or first use will be repaired or replaced free of charge by the selling Dealer after inspection by a Ford representative. Exhaust system components or parts which develop corrosion perforation caused by accidents or other damage are not covered.

This warranty valid only in the 50 United States.

Specifications and descriptions used were in effect when this publication was approved for printing. Lincoln-Mercury Division reserves the right to discontinue options at any time, or change specifications, equipment or designs without notice and without incurring obligation. Standard and optional equipment listed are subject to change. Some features described are optional at extra cost. Some options are required in combination with other options. Availability of some features may be subject to a slight delay.

Buy or lease your LN7 from your Lincoln-Mercury Dealer.

Litho in U.S.A. (175M) 8-81 Form No. P-8116





MERCURY LN7

LINCOLN-MERCURY DIVISION

